

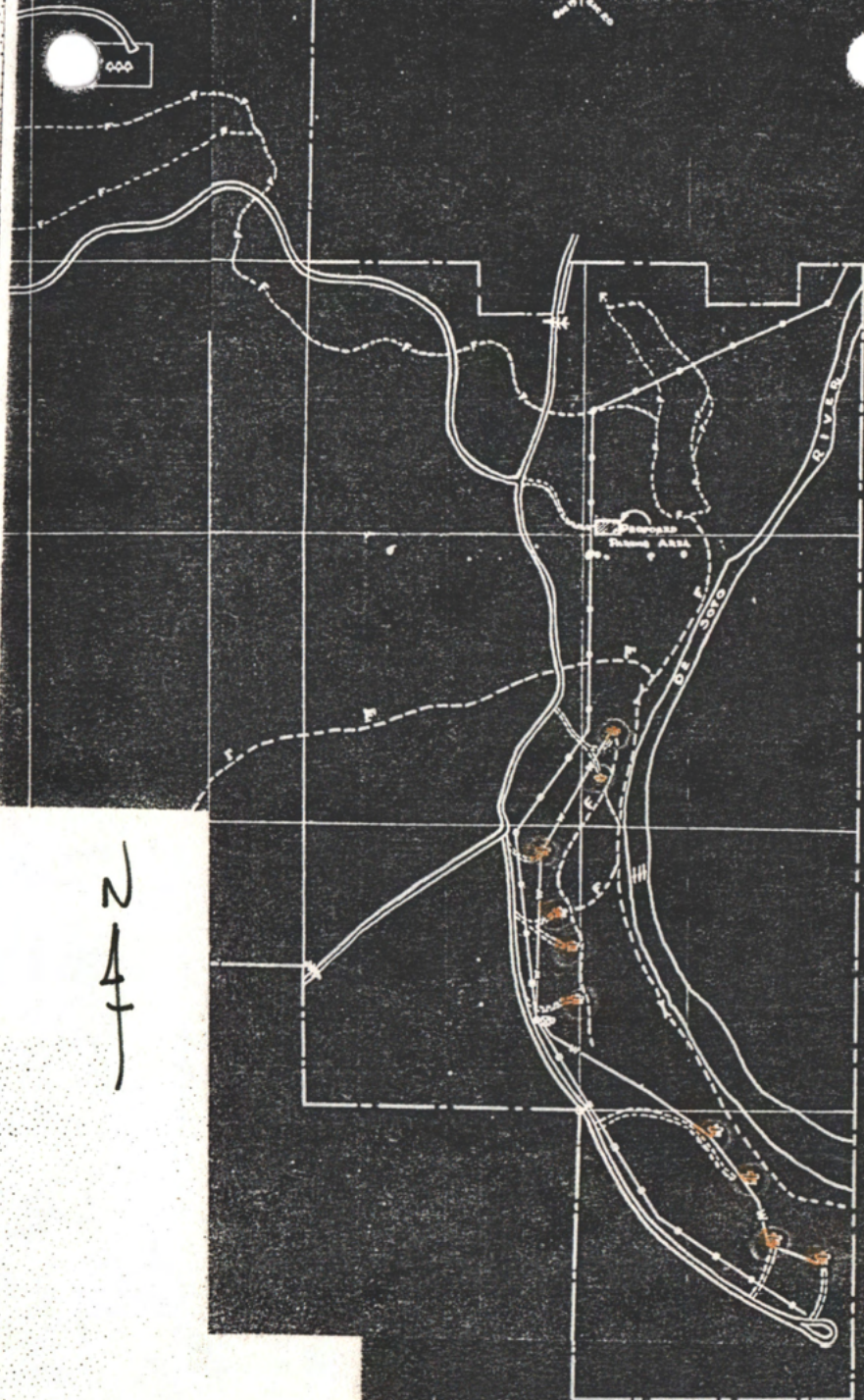
**ARCHITECTURAL COLLECTION
OF
HARVIE P. JONES, F.A.I.A.**

SERIES 4---PHOTOGRAPH NOTEBOOKS

BOOK 62

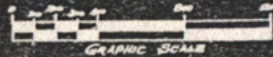
**1933 DeSoto State Park
1892 Clanton Hse.,
701 Adams St.
c1900 Coffman Hse.
1888 St. Michael's,
Anniston, AL
1920's Erskine Tomb
Braham-Goldsmith Hse.,
206 Gates Ave.
1887 Goldsmith Hse.,
506 Franklin
c1900 Wm. Pepper Office,
Athens, AL
1994 Wm. Pepper Res.,
Athens, AL
c1818 Murphy Hse.,
Decatur, AL**

N
4
T



DEPARTMENT OF THE INTERIOR
NATIONAL PARK SERVICE
AND
ALABAMA
BUREAU OF PARKS, ALABAMA COMMISSION OF FORESTRY
BRANCH OF PLANNING COOPERATING STATE PARK DIVISION

DE SOTO SP-5
PARKING AREA



SYMBOL
NUMBER
4ALA5-72
DATE
8-26-35

16A

8-26-35

NOTE:

ALL PLANT MATERIAL INDICATED ON THIS PLAN IS AVAILABLE WITHIN THE PARK AREA - TOGETHER WITH SUFFICIENT LEAF-MOULD FOR FERTILIZING

SEE ACCOMPANYING SHEET FOR DETAIL BUILDING FOUNDATION PLANS

FIELD PLANTING

Proj. 301



LIST OF AVAILABLE PLANT MATERIALS

TREES

1. QUERCUS ECHINATA
Q. PALUSTRIS
2. QUERCUS LYRATA
- LOW TREES
3. CERCIS CANADENSIS
4. CORNUS FLORIDA
5. CRATAEGUS IN VARIETY
6. ILEX OPACA
7. MALUS CORONARIA

SHRUBS

8. AZALEA NUDIFLORUM
9. CALLICARPA AMERICANA
10. GAYLUSSACIA FRONDOSA
11. HYDRANGEA QUERQUEFOLIA
12. ILEX MONTICOLA
13. KALMIA LATIFOLIA
14. RHODODENDRON CATAWBIENSE

VINES

15. AMPELOPDIS QUINQUEFOLIA
16. GELSEMIUM SEMPERVIRENS
17. SMILAX LANCEOLATA

- SHORTLEAF PINE
- LONGLEAF PINE
- OVER-CUP OAK

- RED BUD
- FLOWERING DOGWOOD
- HAWTHORN
- AMERICAN HOLLY
- CRAB APPLE

- NATIVE AZALEA
- AMERICAN BEAUTY BERRY
- HUCKLEBERRY
- OAK-LEAF HYDRANGEA
- MOUNTAIN HOLLY
- MOUNTAIN LAUREL
- CATAWBA RHODODENDRON

- VIRGINIA CREEPER
- CAROLINA JESSIMINE
- SOUTHERN SMILAX

DEPARTMENT OF THE INTERIOR
 NATIONAL PARK SERVICE
 AND
 ALABAMA
 BUREAU OF PARKS AND RECREATION
 ALABAMA COMMISSION OF FORESTRY
 COOPERATING
 BRANCH OF PLANNING STATE PARK DIVISION

DE SOTO-S.P.-5

GENERAL PLANTING PLAN
 CADIN AREA

SCALE OF FEET

DRAWN BY: James H. Phillips
 RECOMMENDED:
 APPROVED:

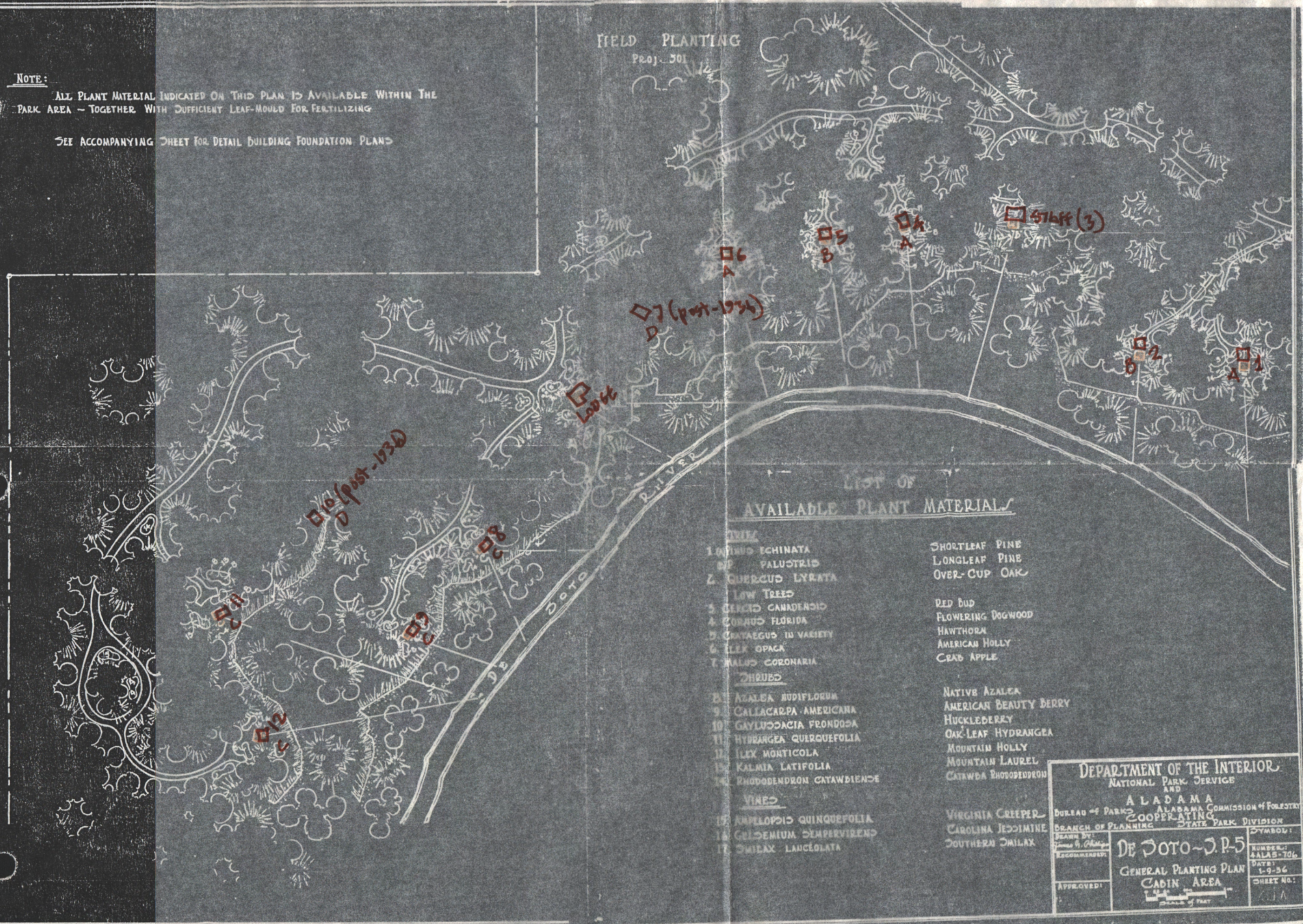
SYMBOL:
 NUMBER: 44AS-706
 DATE: 1-9-36
 SHEET NO: 11A

NOTE:
 ALL PLANT MATERIAL INDICATED ON THIS PLAN IS AVAILABLE WITHIN THE
 PARK AREA - TOGETHER WITH SUFFICIENT LEAF-MOULD FOR FERTILIZING

SEE ACCOMPANYING SHEET FOR DETAIL BUILDING FOUNDATION PLANS

FIELD PLANTING

Proj. 301



LIST OF AVAILABLE PLANT MATERIAL

TREES

- 1. QUERCUS ECHINATA
- 2. QUERCUS PALUSTRIS
- 3. QUERCUS LYRATA
- 4. LOW TREES
- 5. CERCIS CANADENSIS
- 6. CORNUS FLORIDA
- 7. CORYLUS IN VARIETY
- 8. ILEX OPACA
- 9. MALUS CORONARIA

SHRUBS

- 10. AZALEA NUDIFLORUM
- 11. CALLICARPA AMERICANA
- 12. GAYLUSACCIA FRONDOSA
- 13. HYDRANGEA QUERQUEFOLIA
- 14. ILEX MONTICOLA
- 15. KALMIA LATIFOLIA
- 16. RHODODENDRON CATAWBIENSE

VINES

- 17. AMPLOPSIS QUINQUEFOLIA
- 18. GELSEMIUM SEMPERVIRENS
- 19. SMILAX LAUCOLATA

- SHORTLEAF PINE
- LONGLEAF PINE
- OVER-CUP OAK

- RED BUD
- FLOWERING DOGWOOD
- HAWTHORN
- AMERICAN HOLLY
- CRAB APPLE

- NATIVE AZALEA
- AMERICAN BEAUTY BERRY
- HUCKLEBERRY
- OAK-LEAF HYDRANGEA
- MOUNTAIN HOLLY
- MOUNTAIN LAUREL
- CATAWBA RHODODENDRON

- VIRGINIA CREEPER
- CAROLINA JESSAMINE
- SOUTHERN SMILAX

DEPARTMENT OF THE INTERIOR
 NATIONAL PARK SERVICE
 AND
 ALABAMA
 BUREAU OF PARKS AND RECREATION
 ALABAMA COMMISSION OF FORESTRY
 COOPERATING STATE PARK DIVISION

BRANCH OF PLANNING

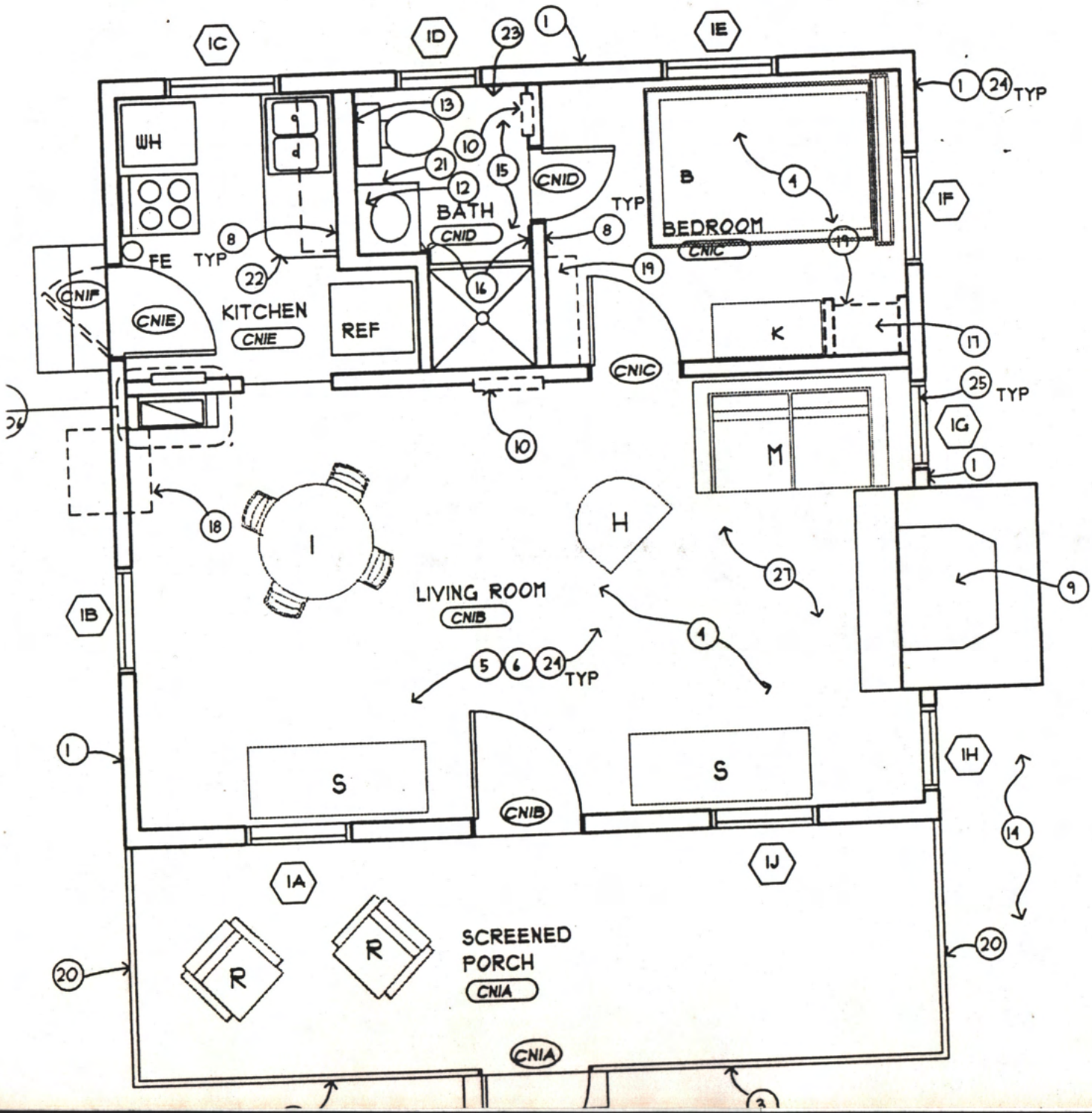
DE SOTO - J. P. 5
 GENERAL PLANTING PLAN
 CABIN AREA

SCALE OF FEET

DATE: 1-9-36
 SHEET NO: 1

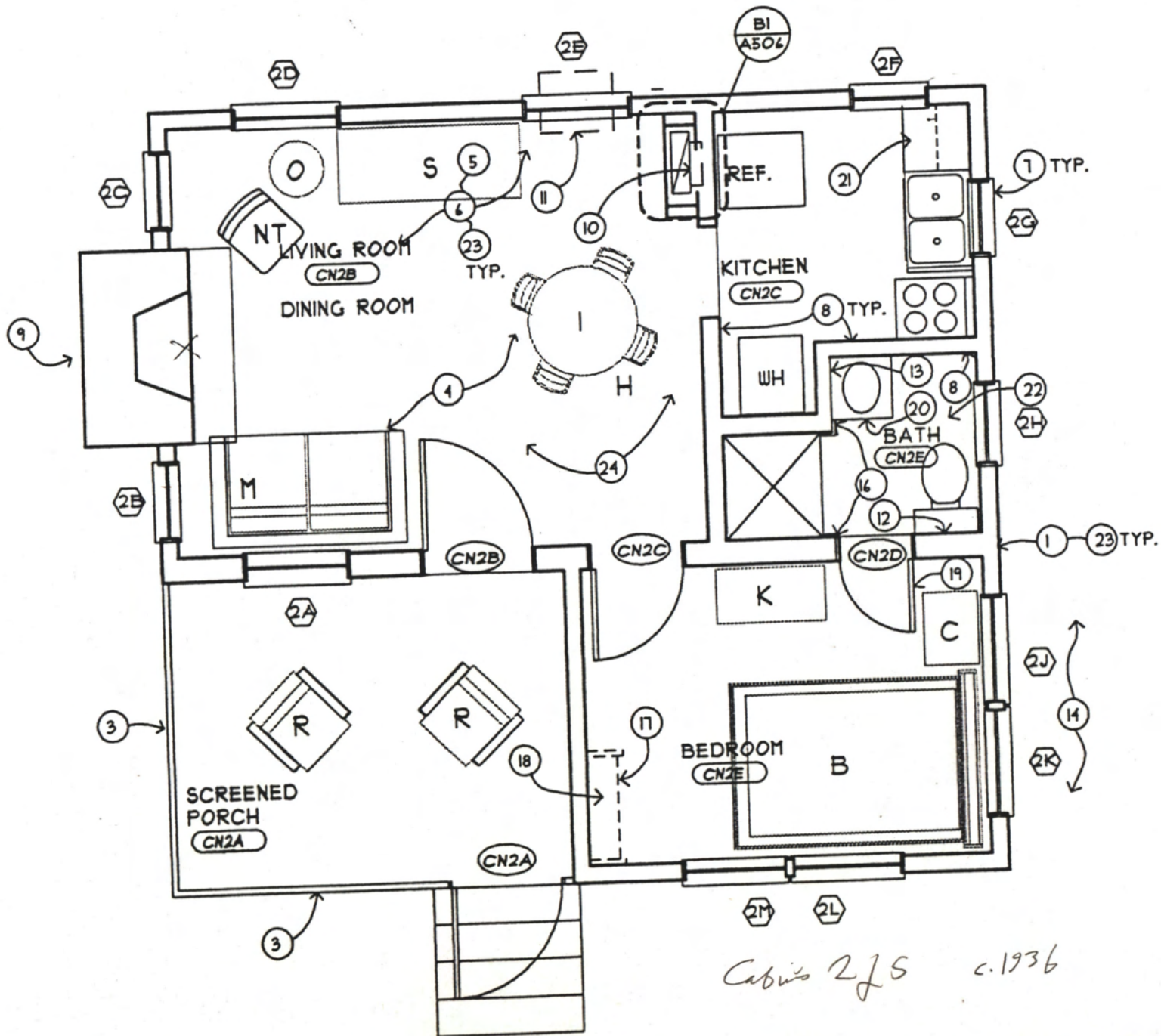
FURNITURE LEGEND
 (FURNISHED & INSTALLED BY
 CONTR. UNLESS OTHERWISE NOTED)

- A. WING CHAIR-UPH
- B. DOUBLE BED
- C. NIGHT STAND
- D. DESK
- E. DRESSER
- F. MIRROR
- G. KING BED
- H. SMALL CHAIR
- I. 34" DIAMETER TABLE
- J. ARMOIR
- K. CHEST
- L. TABLE
- M. LOVESEAT
- N. SIDE CHAIR
- O. END TABLE
- P. TWIN BED
- Q. SMALL CHEST
- R. ROCKER
- S. DAYBED

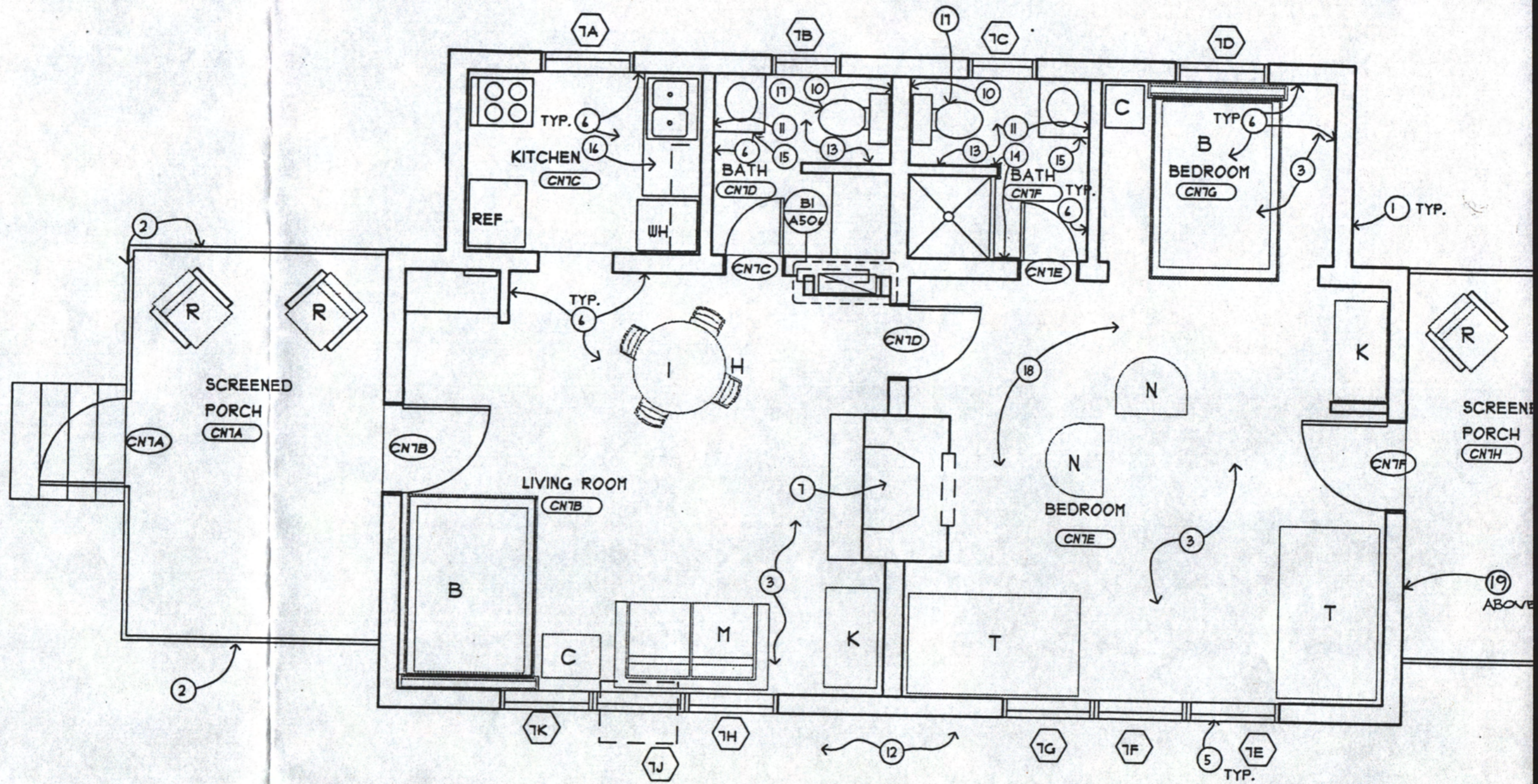


() FINISHED AND INS

- A. WING CHAIR-UP
- B. DOUBLE BED
- C. NIGHT STAND
- D. DESK
- E. DRESSER
- F. MIRROR
- G. KING BED
- H. SMALL CHAIR
- I. 34" DIAMETER
- J. ARMOIR
- K. CHEST
- L. DINING TABLE
- M. LOVESEAT
- N. UPH. CHAIR
- O. END TABLE
- P. TWIN BED
- Q. SMALL CHEST
- R. ROCKER
- S. DAYBED
- T. BUNK BED



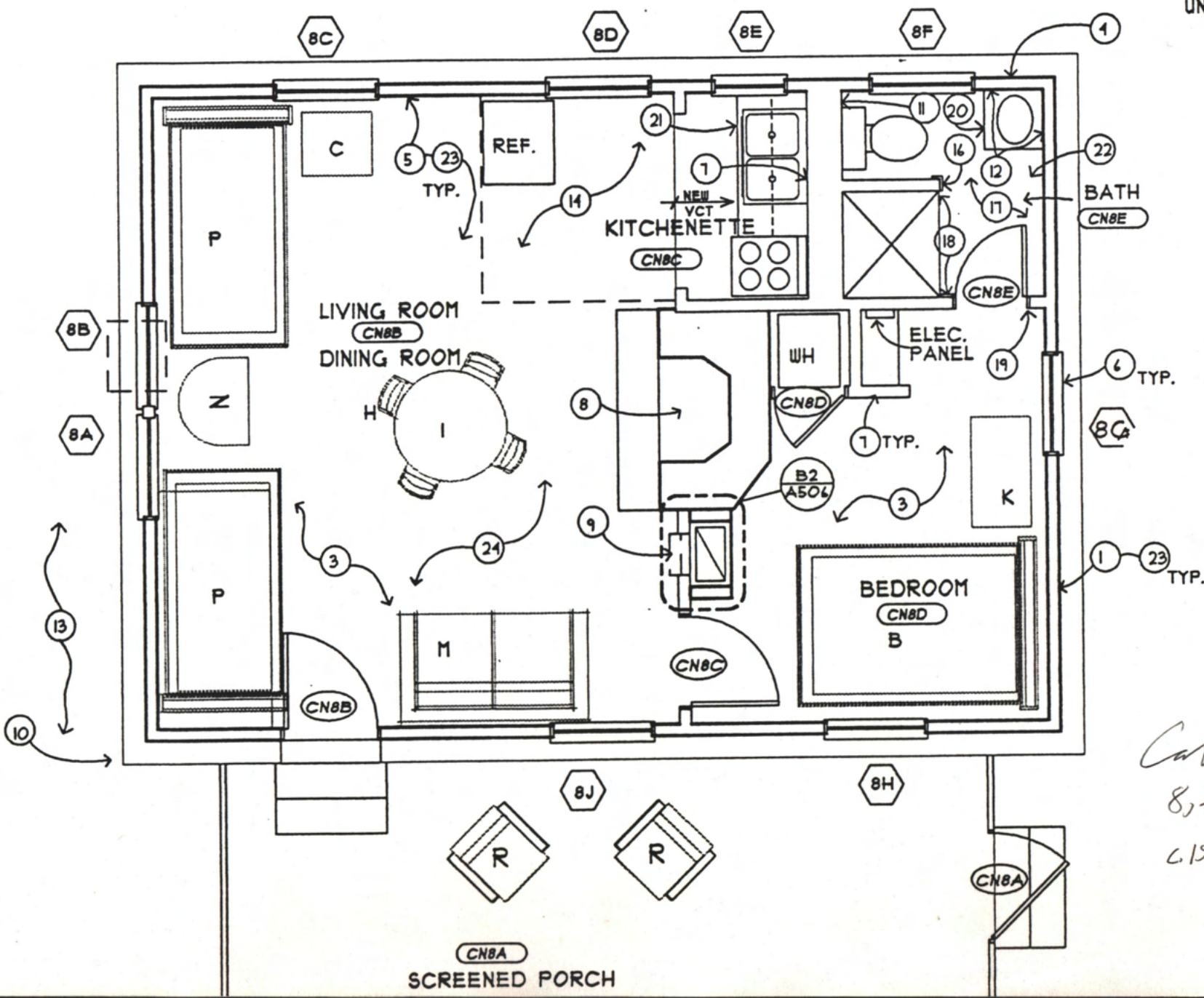
Cabin 275 c. 1936



Cabin 7 & 10 (c. 1950?)

FURNITURE LEGEND
 (FURNISHED AND INSTAL
 UNLESS OTHERWISE NOT

- A. WING CHAIR-U
- B. DOUBLE BED
- C. NIGHT STAND
- D. DESK
- E. DRESSER
- F. MIRROR
- G. KING BED
- H. SMALL CHAIR
- I. 34" DIAMETER
- J. ARMOIR
- K. CHEST
- L. TABLE
- M. LOVESEAT
- N. SIDE CHAIR
- O. END TABLE
- P. TWIN BED
- Q. SMALL CHES
- R. ROCKER
- S. DAYBED



Cabin
 8, 9, 11, 12
 61936

HJ Cygan

JONES & HERRIN

Architecture/Interior Design

November 22, 1996

Ms. Elizabeth Brown
Alabama Historical Commission
468 South Perry Street
Montgomery, Alabama 36130-0900

Re: DeSoto State Park Renovation

Dear Elizabeth:

Attached per your request are forty-eight annotated and mounted color photographs of a representative sampling of the eleven "cabins" at the DeSoto State Park near Mentone, Alabama. Cabins 1, 2, 4, 5, 6, 8, 9, 11 and 12 show on a 1935 map and were reportedly built in about 1933 by the CCC (Civilian Conservation Corps). No design details have been found for the cabins. Cabins 7 and 10 were built after 1936, per the maps, and were perhaps built in the late 1930's or late 1940's. There are four design types, "A", "B", "C", and "D". The types A, B & C are made of "logs" consisting of nominal 4x12 rotary-sawn timbers with faces later tooled with an ax or adz. The rotary marks are visible in a few places. All the four types have foundation walls and chimneys of local sandstone. The two "D" cabins (7 and 10) do not appear on the 1936 map and are frame and board-and-batten construction. Probably they were built in the late 1930's or late 1940's. All the cabins have one or two screened porches which appear to be original, although many have recent flooring and sometimes newer floor joists.

The ceilings (checked at Cabin 12) were 1x6 tongue & groove planks painted dark green. All ceilings were covered, probably in circa 1960-70, with gypsum board finished in a particularly unattractive circle-pattern of thick pasty gypsum. Due to budget constraints, these ceilings are to remain.

The interior wall faces of perhaps half the rooms were covered with cheap pre-finished plywood paneling in perhaps c.1960-70. This is to be removed unless unexpected problems are found behind them. The type "D" frame cabins (7 and 10) probably have planked interior walls (to be confirmed).

All the wood floors are short (+/- 2' long) pieces of 2-1/2 inch wide varnished oak. We suspect this is a later floor since it seems too fancy for the rustic Depression-era cabins, but these floors are to remain and be refinished. It is specified that sanding be only enough to remove the old varnish. The new finish is to be a non-glossy "Glitza" finish (if bonding tests are successful) which is resistant to water and wear.

Both the stone and the logs have hard, brittle, gray Portland cement grout. Broken grout is to be removed from the log joints and new daubing of mostly-hydrated-lime is to be installed.

Almost no log deterioration and very little wood deterioration of any sort has been found.

The sashes and their hardware, except in Cabin 1, appear commensurate with the 1930's. The narrow 4/4 sashes have a thick center vertical muntin like a Victorian sash, but they are apparently 1930's sashes.

There is no evidence of sash-pulleys, so the sashes apparently always were sliders. One cabin (No. 12) has an early 1800's type holdopen, a series of drilled holes in one jamb and a 1-1/2" brass cotter-pin clamped to a metal toilet-float chain. The pin is inserted in a hole in the jamb to hold up the sash. All the sashes are to be similarly equipped. See photo Page 4.

Only one sash in the entire group was observed to need repair (a broken meeting-rail).

When the window air-conditioners were installed, the bottom sashes were probably discarded (we will check). If so, these will have to be re-made. The window units are to be eliminated in favor of new units, whose condensers must of course be visible. The condensers are to be located on least-visible sides and painted a camouflage color. The owner will be asked if they want to install weather-stripping at the sashes (concealed at the stiles - "Pemko" spring-metal) or to install interior magnet-attached acrylic storm sashes. The Rangers report that "nobody opens the windows".

The original exterior finish on the logs and other exterior wood was a dark green penetrating stain, which probably contains creosote because the later paint layers do not and have not adhered to it. We know of no cure for this. We will brush off the loose paint (a light beige color) and repaint the original dark green, which is not only appropriate but will look less spotty when it again peels (the second finish layer of paint, was also dark green). See photographs on Page 14.

The present composition shingles of an inappropriate "new wood" sandy color are not to be replaced. When they are, a better color would be a 1930's green (still available) or perhaps a dark gray. They were dark green at the 1930's CCC Monte Sano State Park, I recall.

Chimney-top damper and copper "table-form" caps are to be installed, since these are technical problems needing improvement. The chimneys reportedly leak and the original galvanized flashing and stone is smeared with black roofing cement. There is little we can do about this.

The flues are unlined parged sandstone, caked with up to 3/4" of soot and resin. We have advised the Rangers to have them cleaned and inspected by a licensed chimney-sweep. The present project does not include flue-liners. All the fireplaces smoke since there is essentially no smoke-shelf. The above-mentioned top-dampers should help in energy savings. Except for the sash-locks, most hardware and many doors are post-1950 approximately. Hardware only will be replaced as needed for function.

Cabin types A and B, No. 1, 2, 4 and 5 (photo Page 8) have an awkward plank boxing at the intersection of the house and porch roofs. This may be original and is a makeshift way of patching a design problem. We don't see a way of improving it enough to justify the cost.

Some porch ^{piers}~~pins~~ have been rebuilt in concrete block and are to remain, for cost reasons.

The window-screens are aluminum, with approximately 3/4"x2-1/2" wood frames and 1/2"x3/4" batten-strips. Many need repair.

The approximate 3/4"x10" clapboard gables appear to be sound.

The above covers most general conditions of historical and technical interest. Please call if you have other questions.

Respectfully,



Harvie P. Jones, FAIA
HPJ/tm

copy: Mr. Sonny Howard
Mr. Dave Ely
HJ
file

attachments

PAINT AND LOG SAMPLES FROM
CABIN #2, DESOTO STATE PARK

SAMPLES TAKEN BY HARVIE JONES
11/20/96





c. 1960-70 ypp. brn. cil
over 1930's 1x6 T&G w/ cil. (dk. green)

Furn. by CCC (?)
CABIN 12
L.R.



→ Kit. cab.
Lobby
c. 1960-70

All f.p.'s smoke.
No smoke-shelf



2

1 of 14

Cracked
jts. - damp
(Portland Cem)

Photos Nov. 20, 1986
Harvie P. Jones FOLA
James L. Harvin Arch. - Huntsville, AL
DeSoto State Park cabin (1930s)
5188
North Ave, AL
Cabin 12



Cracked
jts. damp
(Portland
Cem)



deterior.
Screen frame



Cabin
12



1933 DeSoto
STATE PARK



B.R.

↑ c. 1960-70
door block



Cent. Wm. → B.A.M. (fixt. ± 1960-70)
 Pl. = mod. "Logs" are rotary-sawn ± 4x12 mm.
 (w/ ax or adz face-tooling.
 ↓ Portland Cem. daubing. Varnish fin



L.R.

Oak fl. probably post-1930's (?)
 Worn Varnish fin.



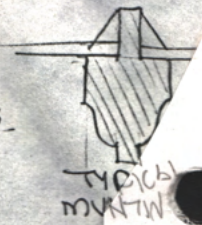
L.R.

Cabin 12

HEAD

no evidence of ropes or pulleys.
No weatherstrip

MEETING RAIL



aluminum insert screen



metal chain

STGH
HOLDUP
brass
copper
pin in
drilled
holes in
joints





Cabin 10 (Cabin 7 = same.)

These two not in 1936 map.
Probably late '30's or
late '40's (?)



Cabin 7

Typical - sloppy flashing at porch roof

5
1944



fans
probably
1960-70
(?)

L.R.



Closets

app. b.t.
ceil.
probably
c.1960-70
phy. panels
probably
c.1960-70

B.R.



7 of 14



KIT.

Bath

Cabin

cross, first of fin probably c. 1960-70's



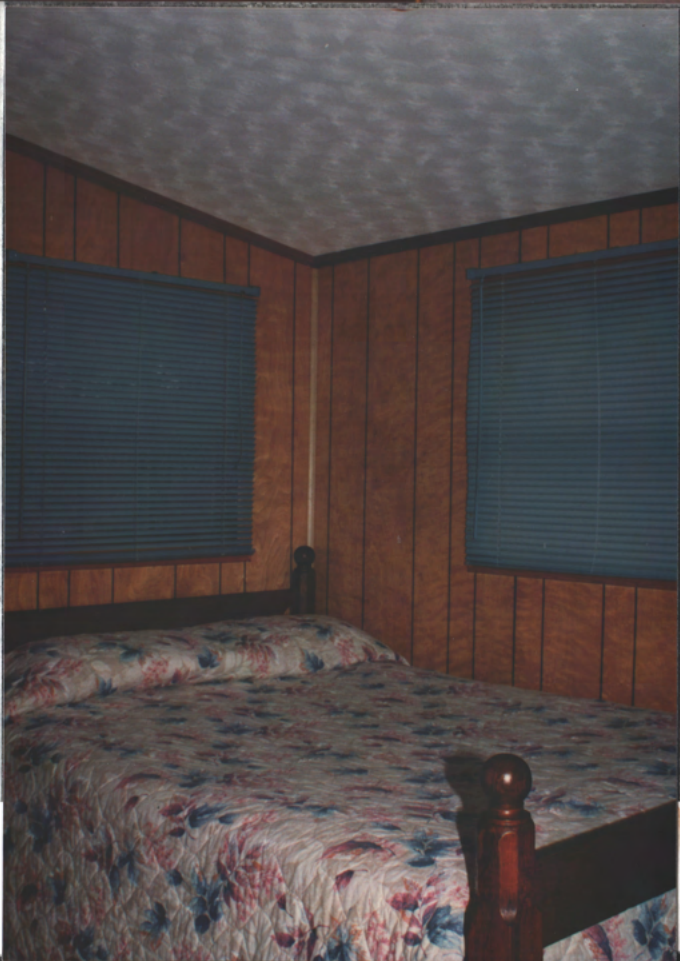
L.P. - at entry
Oak fl. may be later (?)
Varnish is worn.



Cabin 6
→



Cabin 5



Cabin 2
phy. mths & yrs b/c. val = c. 1960-70
wks. form. = 1930s c/c (bed, drst)

10

bed by c/c
c. 1935





← L.R.

↕ Same sofa





Cabin 2 - 6/6 sash



6/6 sash (most-typical)

Cabin 2
4/4 sash
Stamped sash
(see below)



Narrow 4/4 sash w/ thick vert. center muntin
(Vic. style, but appears 1930's-?)
Moulded sash lock

Cabin 2

13014



Cabin 2
(typical)

Bottom layer is dk. gr. 57W11 (not paint) -
may have creosote in it, causing peeling of all later layers





Cabin 11 - TYPICAL - g.W. flash, tucked into stone + black roofing cem, smeared
Flash is buckled - up

Cabin 7 - stone - flash, heavily coated w/ rosin = dangerous. Up to 3/4" thick.



Cabin 12 screen (top)

fireplace. Virtually no smoke shelf (F.P.'s smoke)

14914