

**Dennis Tenement, Lincoln Street, c. 1820.**

The square pillars, cast iron and heavy brick stairs were probably added in the 1850's. Now demolished.

1877  
 500 W. 11th St.  
 photo July 1981  
 Dennis Tenements  
 (once about 1/2 blk. away)  
 For Mills Lane  
 near Warren Park  
 near 11th St. & D.I.



spaced several feet apart to  
 North  
 Front  
 along  
 E. Congress  
 St.  
 facing  
 Warren  
 Sq.  
 NEPT  
 957,  
 complete  
 in July 1998  
 photos  
 HP Jones  
 Hammers





N. West



LT. LEAK IN WINDOW

207



→ W E. Side of W. Abernethy Warren St



S. Reps

L-303

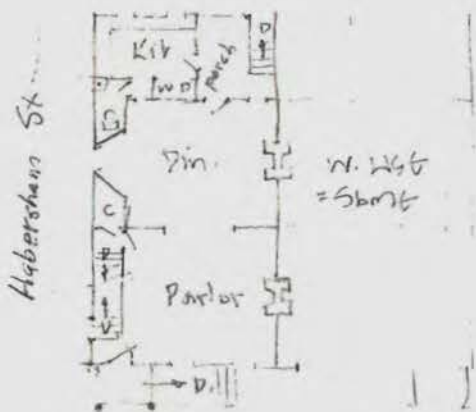


N



N

Made w/ \$12 cardboard camera



Hebersham

N

E. Congress St.

Warren Sq.

MAIN FL. (LEVEL 2)

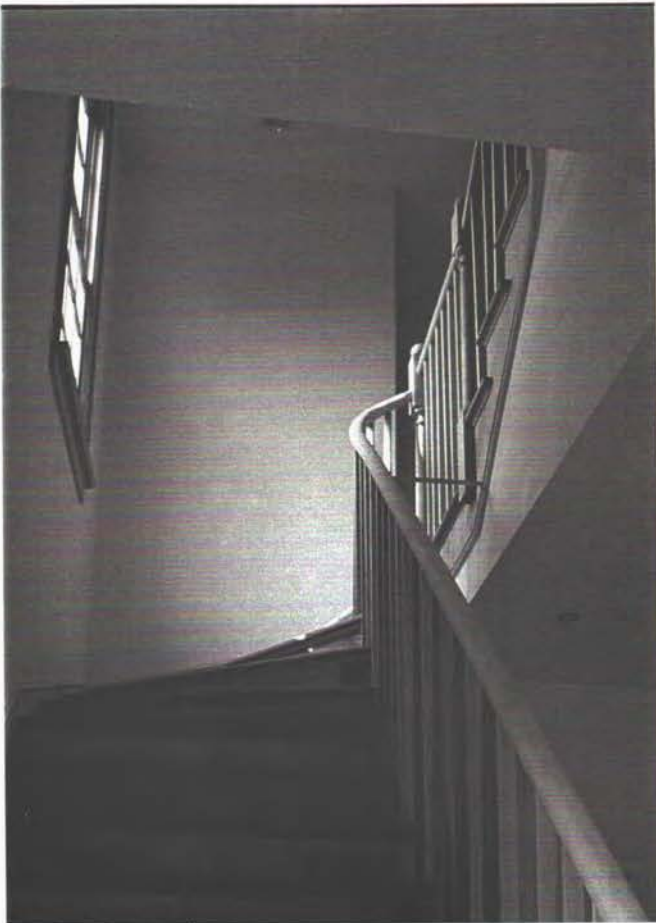
LEVEL 1 = 1 BR apt

LEVEL 3 = 2 BR, 2 baths

Congress St



June 97 photo of site - HJ (parking lot)



N



N

East Use Parlor



N

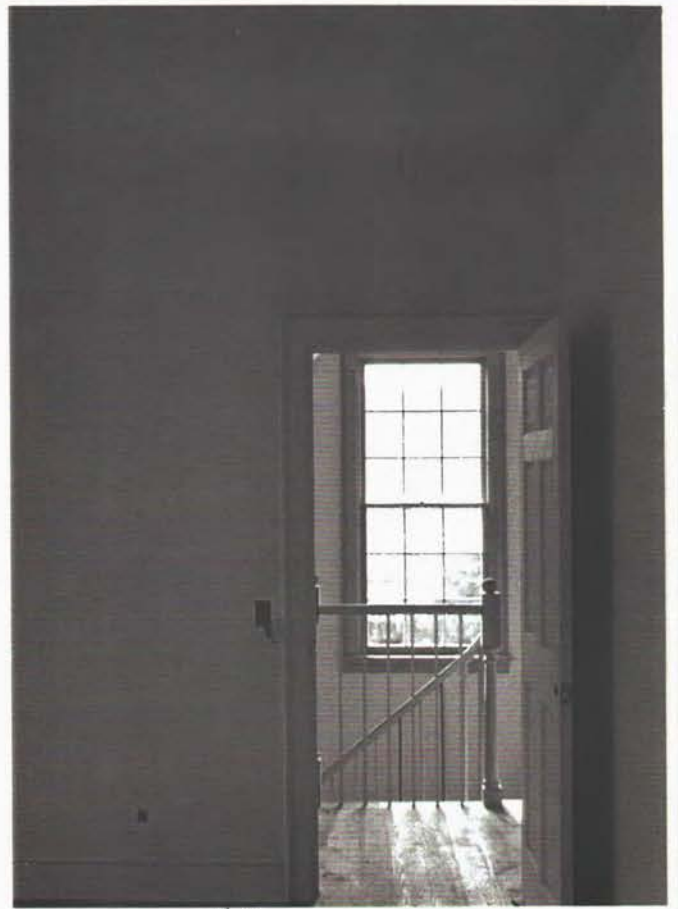


New mantel stored at level of N. Parlor → N

East Use



"Kink" in rail is poor fabrication - should be smooth curve



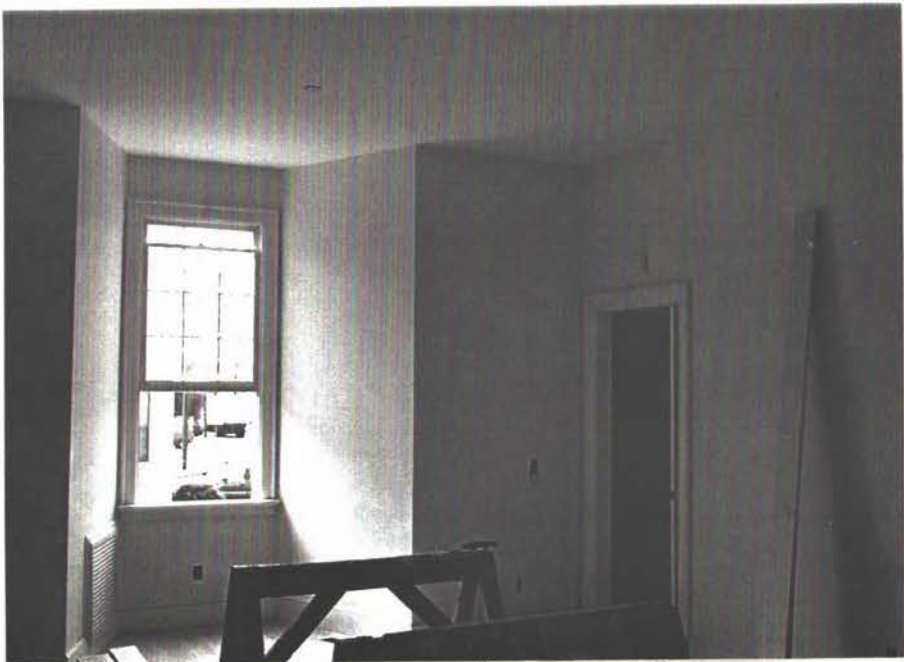
NA



EAST HSE

Level 2

↑ 2



DIN.  
- WEST

1/2 bath to KIT.



DIN.  
- WEST  
KIT



DIN. - EAST



KIT.  
- WEST  
KIT

687

706



PH2L02

N  
+

WEST  
125E



DW.

W+



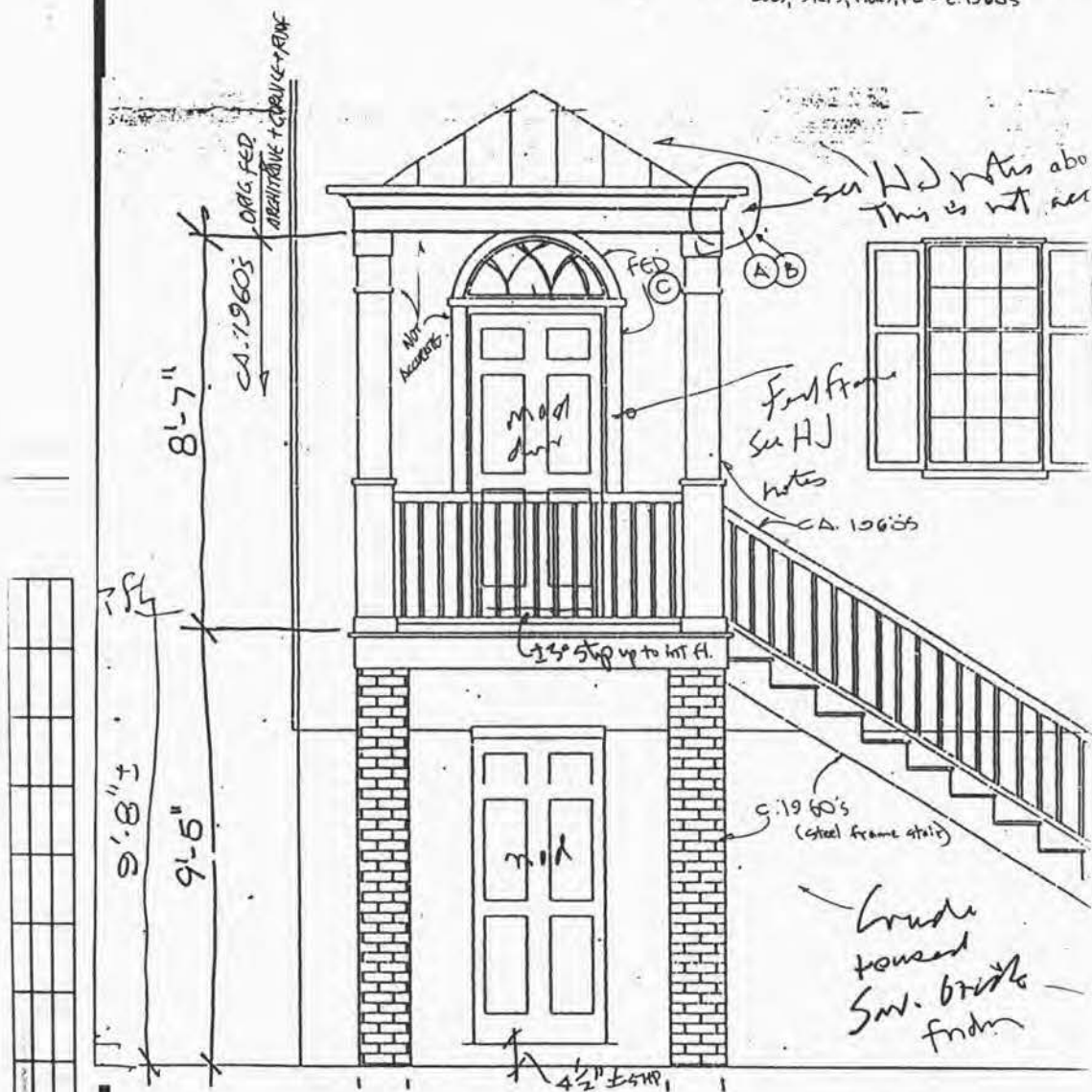
PH2L02  
N+

PH2L02  
+





② 1957 PHOTO ON YORK ST.  
 PORTICO: ROOF & EXTERIOR = 1916/17  
 COLS, STEPS, PLINTH, FL = c. 1960's



See HJ notes above  
 This is not see

Found from  
 See HJ  
 notes

CA. 1960's

c. 1960's  
 (steel frame stairs)

Grade  
 housed  
 Saw. brick  
 from

EXISTING PORTICO N. ELEV. 1/2" = 1'



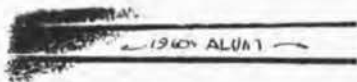
(LOTT + DREMER ARCH. DRWG.)  
 1. HSE MOVED TO YORK / LIBERTY ST. S.W. CORNER  
 REBUILT ABOUT 5', NEW STEPS & PORTICO PIECE  
 (ARCHITECTURE & ROOF OF PORTICO IS ORIG. FED. PER  
 PER SIGN - SOME FRAMING). NEW ENTRY FRAME &  
 ALUM. SIDING INSTALLED c. 1960's (?)

(bad proportions)

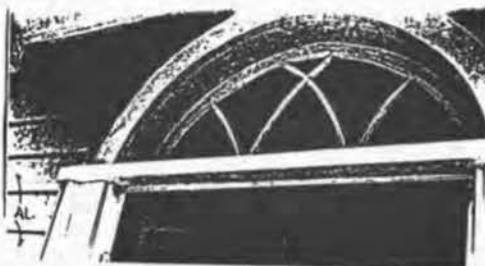
9/2/1960



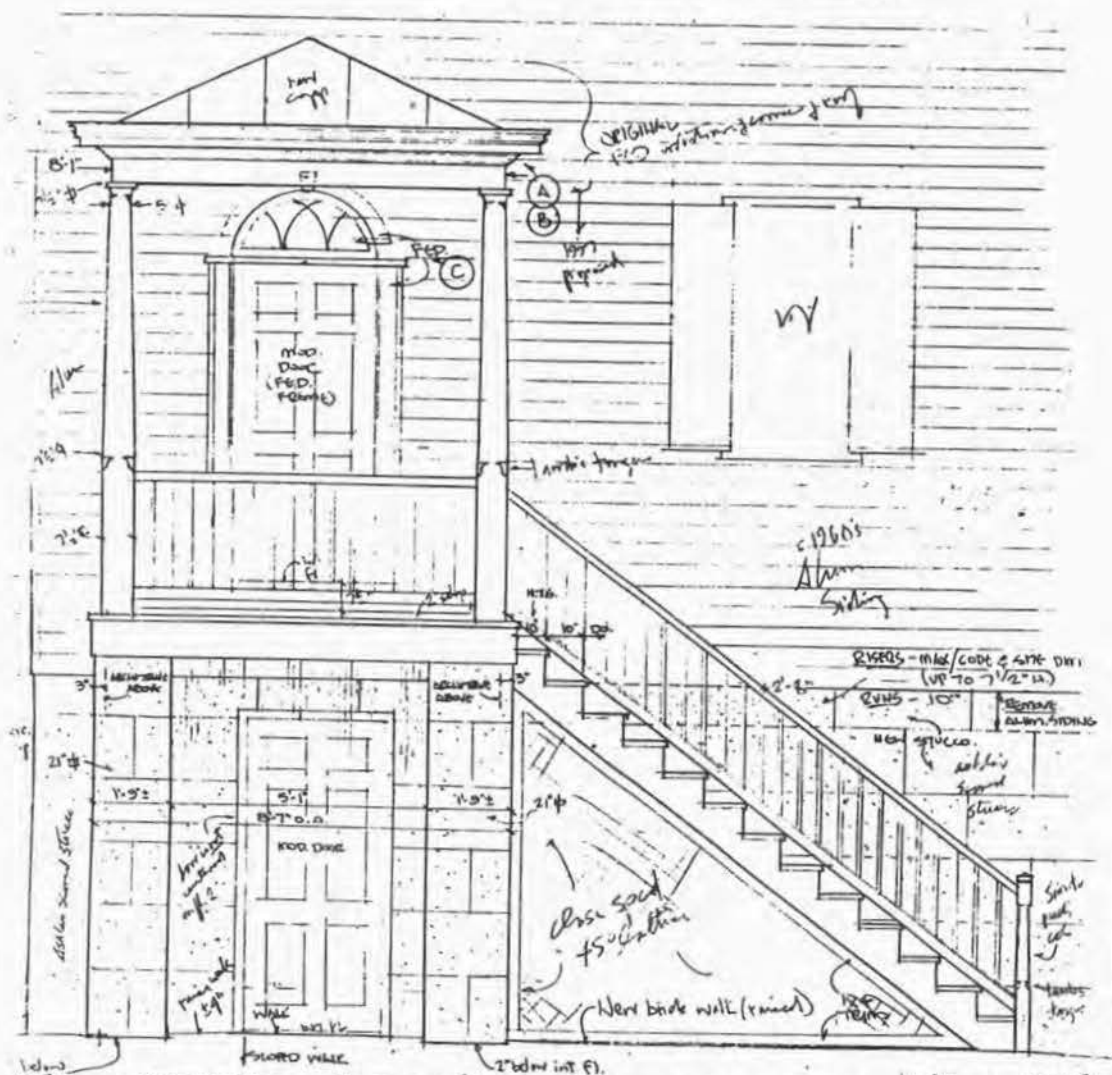
Nov 97  
 Shafiq Idris  
 Sammak



ENCO COENICE, (1910)  
 FFD & FWD



(C)  
 1960 FWD  
 @ FWD & SUFF  
 (C.1960's Door)



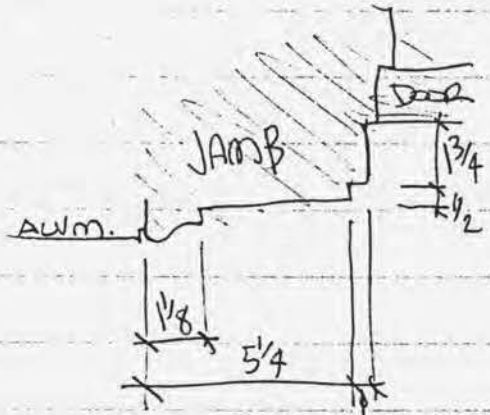
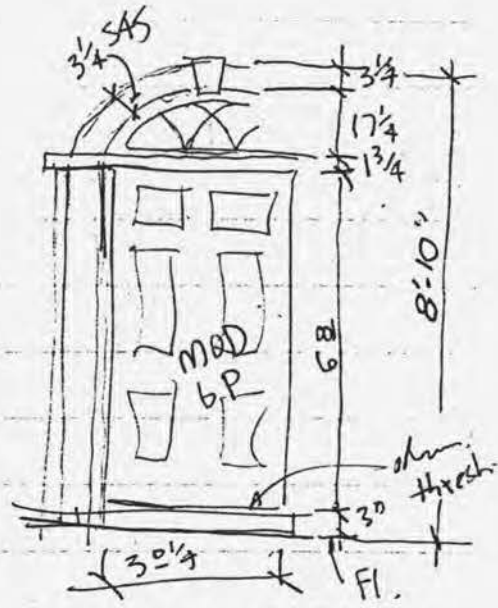
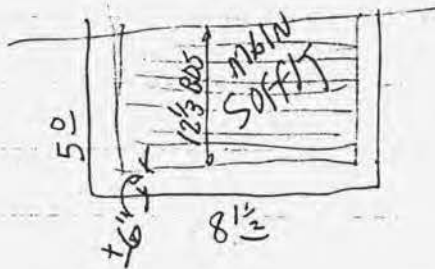
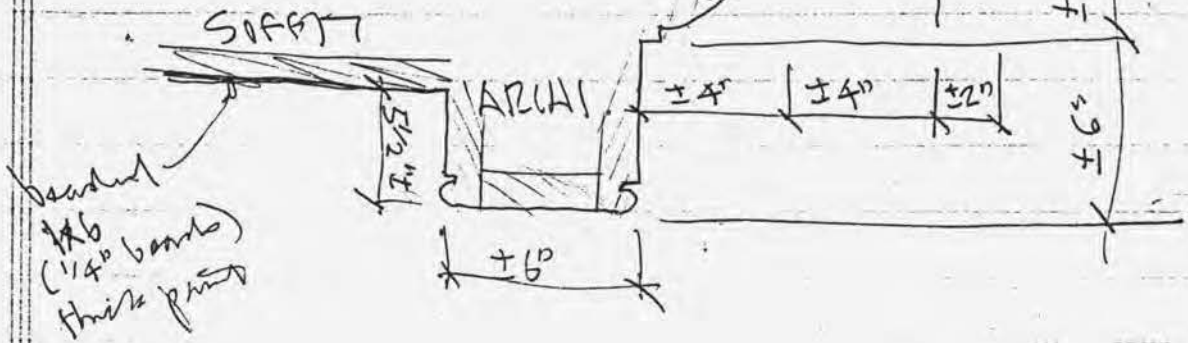
**PROPOSED PROPORTIONAL IMPROVEMENTS** 1/2" - 1" - 0" ± H.P.S. approx FAIA

1. PORTICO FL. = 7 1/2" BELOW ENTRY FL. (VERSUS 8 1/4" NOW) = SUBJECT TO ENCO. OFFICIAL APPROVAL.
2. FL. OF PORTICO SLIPS 2" TO FRONT LIP (= 9 1/4" BELOW INT. FL.).
3. REVERSE WALK TO ENCO W/ LEVEL 1 FL. AT LOWER ENTRY (H.C. ACCESS). HAS 4 1/2" STEP NOW.
4. " " " 2" BELOW " " " " " PILES & STOPS = ABOUT 4" - 5" HIGHER THAN NOW.
5. MAKE PILES ± 10" φ (VERSUS 14" NOW). MAKES PILES LOOK SHORTER.
6. MAKE STOPS AS STEEP AS CODE ALLOWS (= 7 1/2" RISE, 10" RUN) - VERIFY AT SITE. 7 3/4" MAX/CODE
7. INSTALL FWD. TYPE COLS. & BALUSTRADES
8. " CLOSE-SPACED (2 1/4" φ HOLES) PAINTED LATTICE UNDER STOPS.
9. " ANTI-SLIP-SCORED PAINTED STUCCO ON BRICK FINED. WALLS & PILES
10. " 6" FENCE AT 12' ± 2' OFF

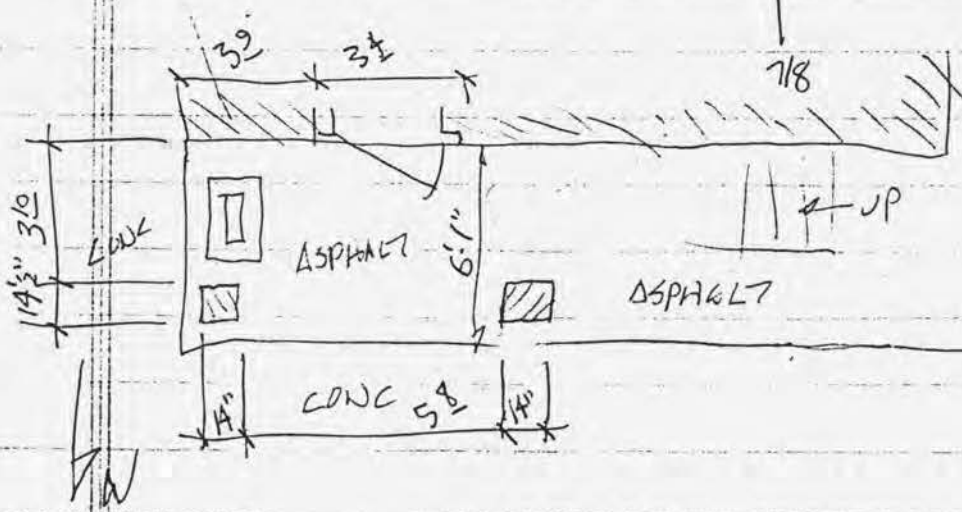
NOTE!  
 SHUTTERS  
 PILES ± 10"

1818  
 Abraham  
 Sheftall 1/2  
 321 York St. Savannah  
 6 Jun 17 43

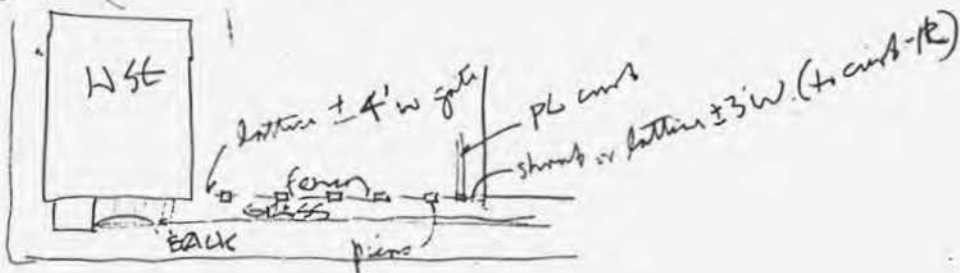
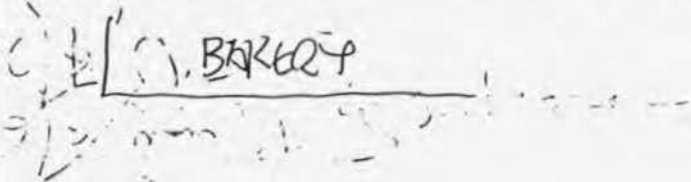
CORNICE



ELEV  
 Main ent



St. Michaels 1st & Franklin Sts (1818 Sheftall!)



1. Revise elev of bread store around  
 Replace awning - replace <sup>mass.</sup> in less garish colors  
 (similar design but calmer colors, w/ sign on front of awning, "BAKERY")

2. Portico also sim. to Belle Mont (ML)  
 Fence piers " " " " ( " )

Portico steps as step as curb allows  
 Step down 7 1/2" out of base down to  
 portico fl.

put stress on brick fence walls

