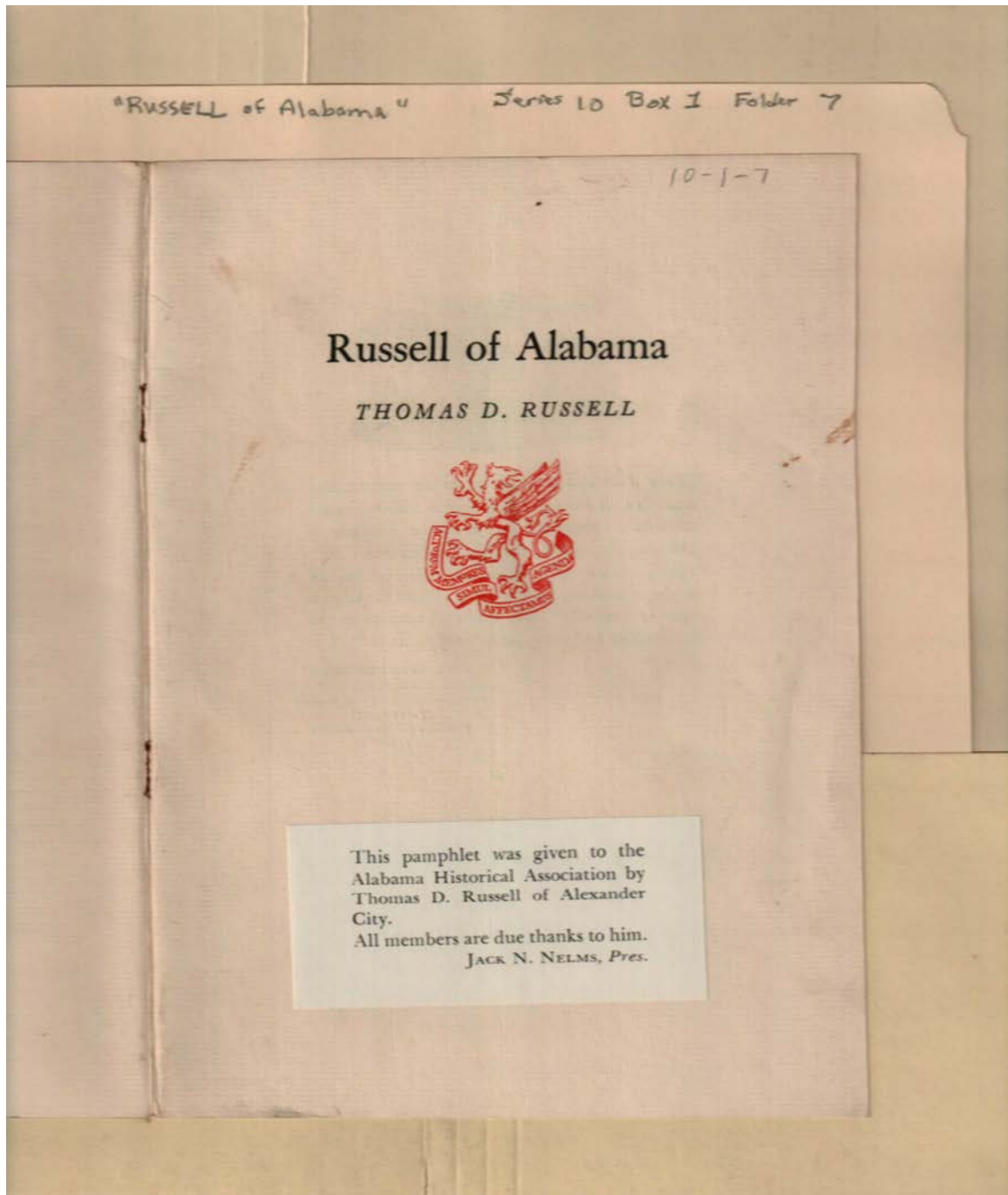


Frances Cabaniss Roberts Collection: Series 10, Box 1, Folder 7

Russell, Thomas D. "Russell of Alabama," 1960

Image 1 r10_01-07-000-0060 [Contents](#) [Index](#) [About](#)



Names:

Nelms, Jack N.

Russell, Thomas D.

Russell of Alabama

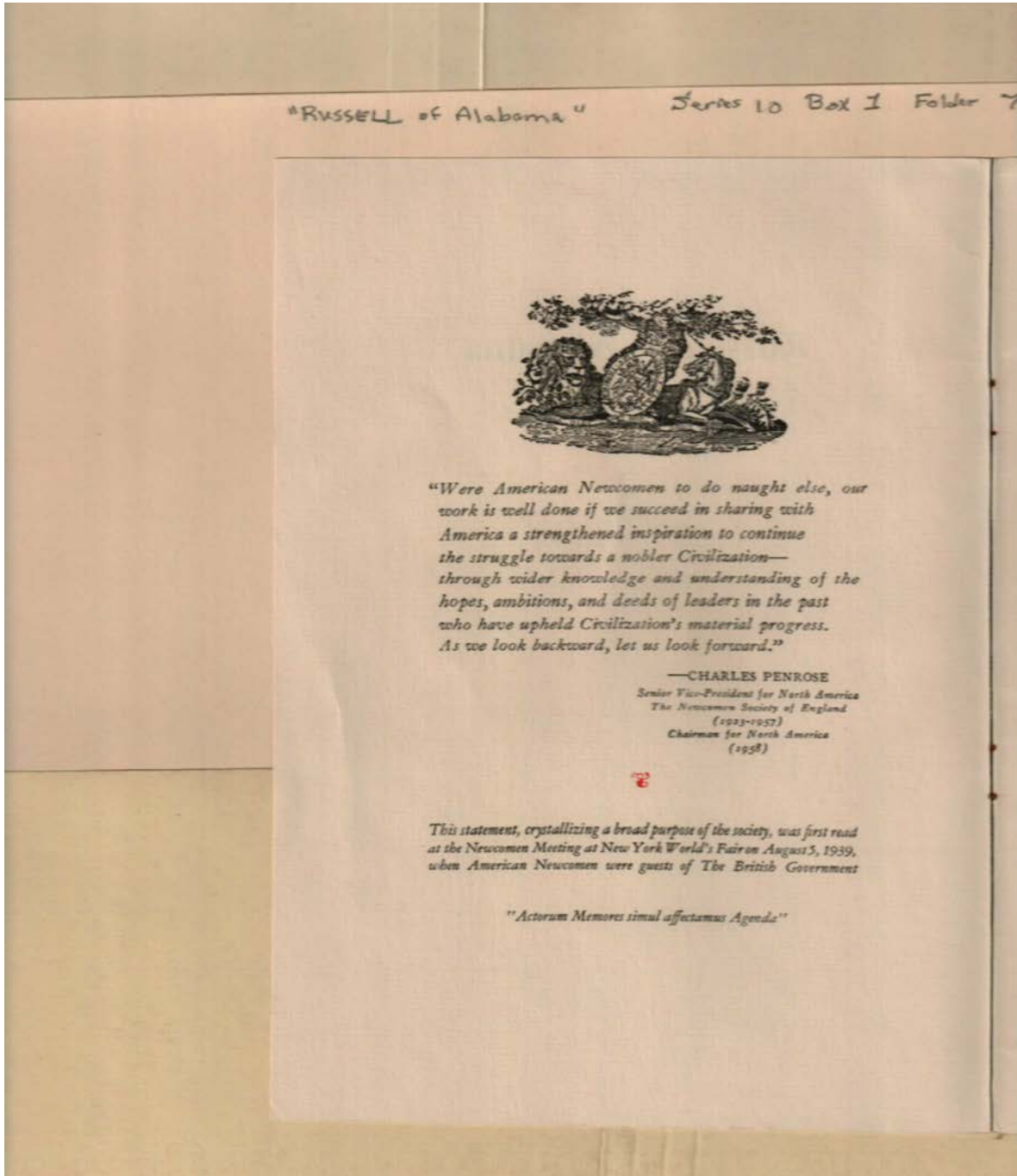
Types:

booklet

Frances Cabaniss Roberts Collection: Series 10, Box 1, Folder 7

Russell, Thomas D. "Russell of Alabama," 1960

Image 2 r10_01-07-000-0061 [Contents](#) [Index](#) [About](#)



Names:

Penrose, Charles

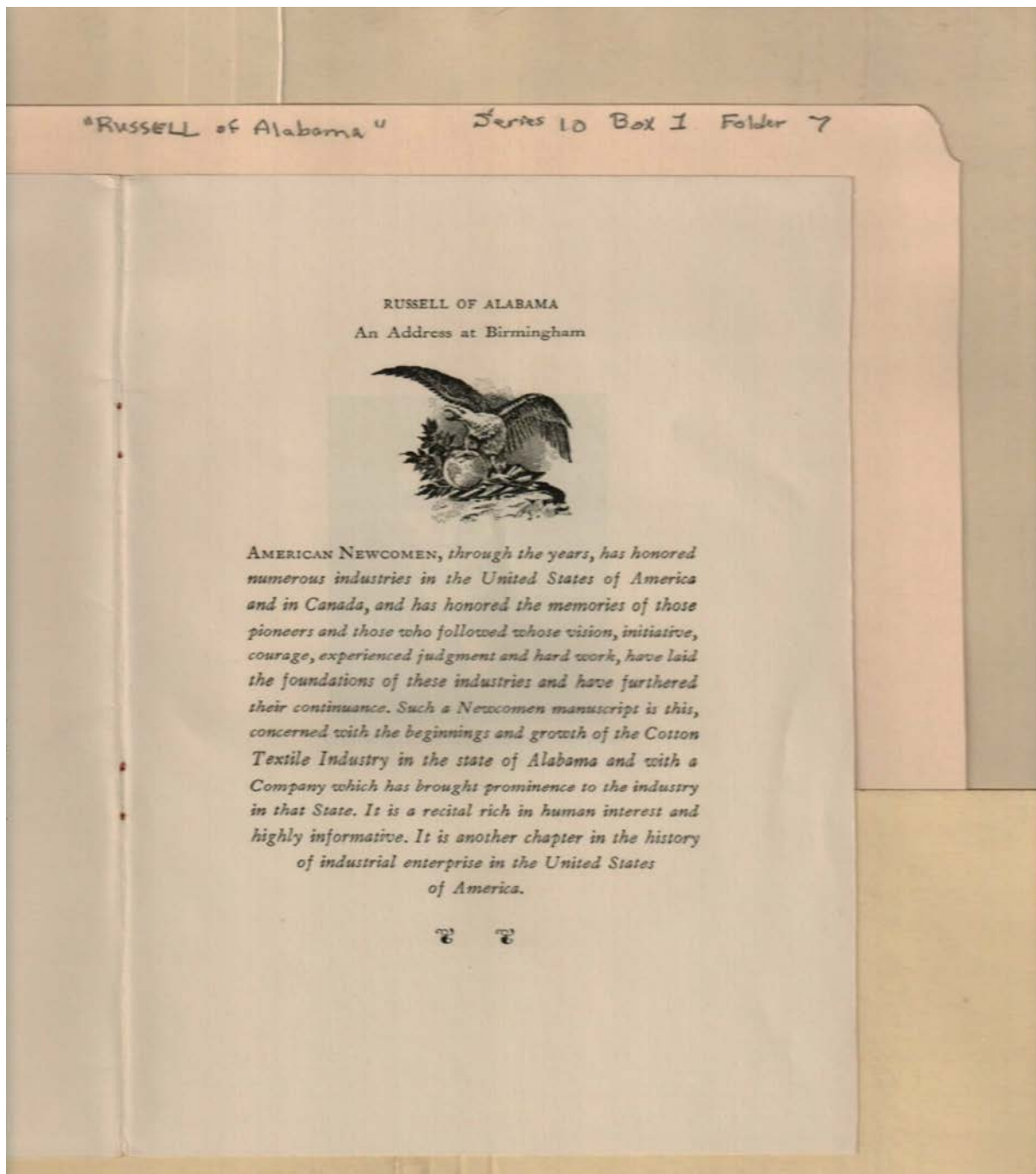
Types:

booklet

Frances Cabaniss Roberts Collection: Series 10, Box 1, Folder 7

Russell, Thomas D. "Russell of Alabama," 1960

Image 3 r10_01-07-000-0062 [Contents](#) [Index](#) [About](#)



Names:

American Newcomen

Russell of Alabama

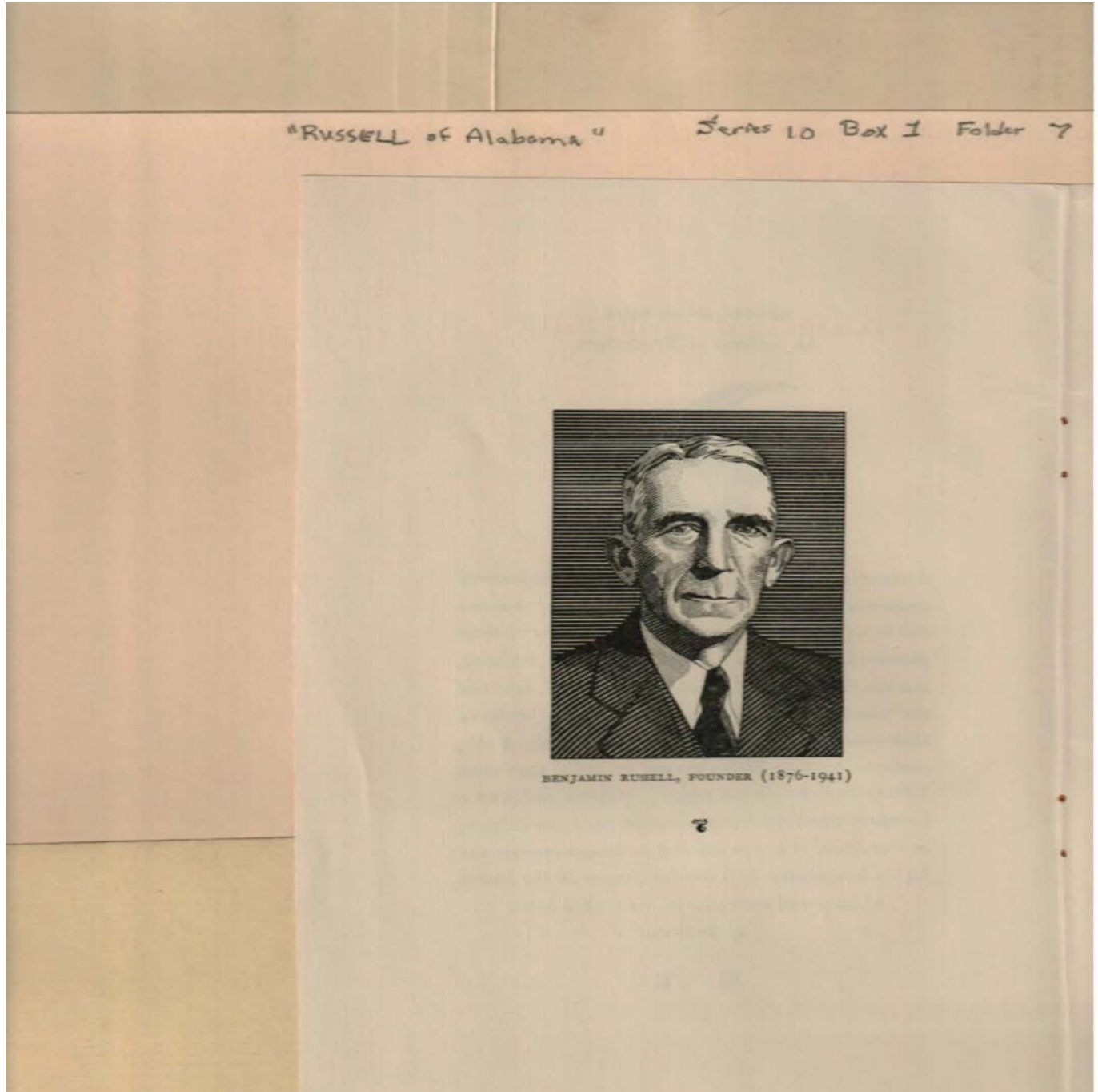
Types:

booklet

Frances Cabaniss Roberts Collection: Series 10, Box 1, Folder 7

Russell, Thomas D. "Russell of Alabama," 1960

Image 4 r10_01-07-000-0063 [Contents](#) [Index](#) [About](#)



Names:

Russell, Benjamin

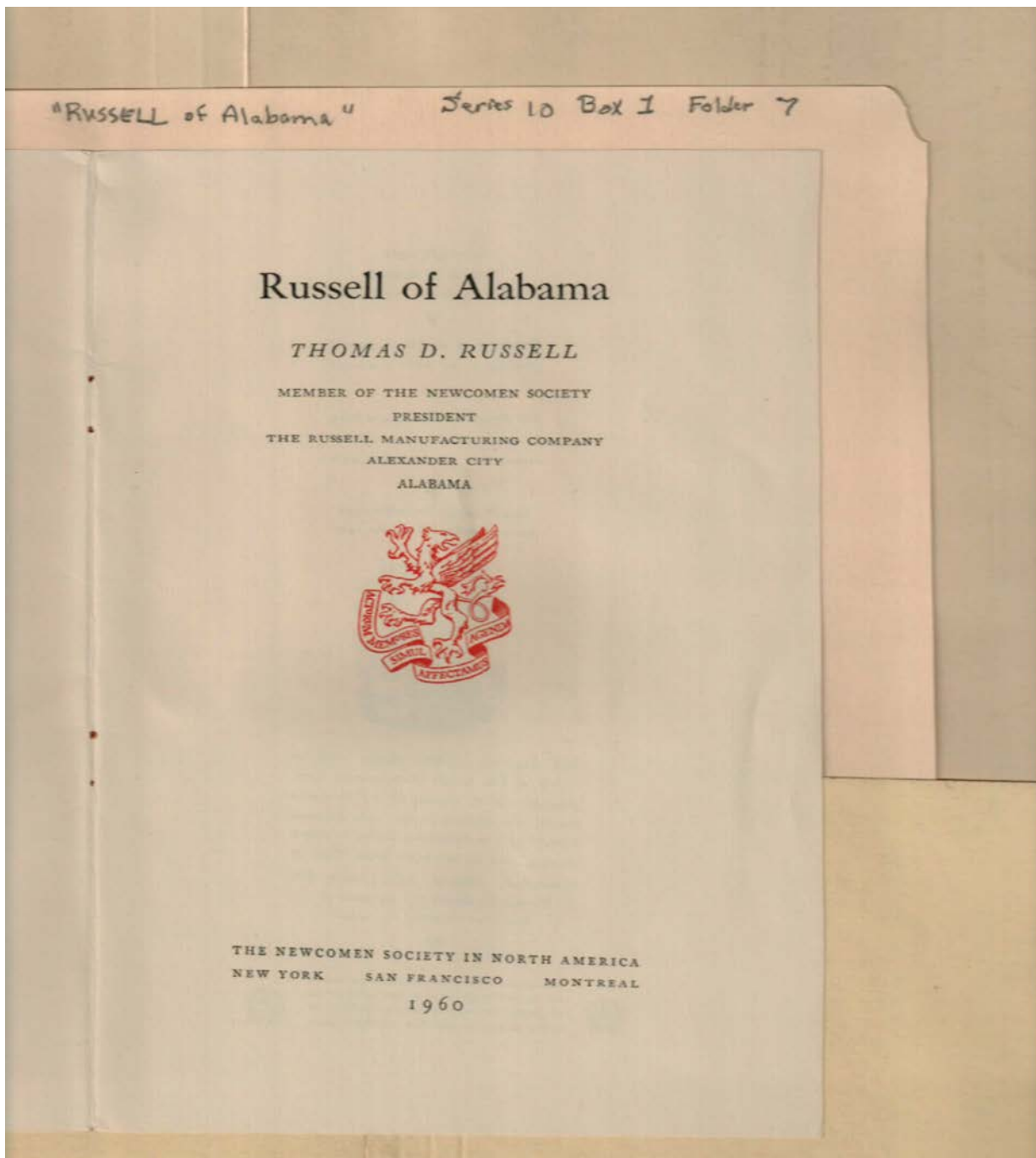
Types:

drawing

Frances Cabaniss Roberts Collection: Series 10, Box 1, Folder 7

Russell, Thomas D. "Russell of Alabama," 1960

Image 5 r10_01-07-000-0064 [Contents](#) [Index](#) [About](#)



Names:

Russell, Thomas D.

Russell of Alabama

Places:

Alexander City, AL

Types:

booklet

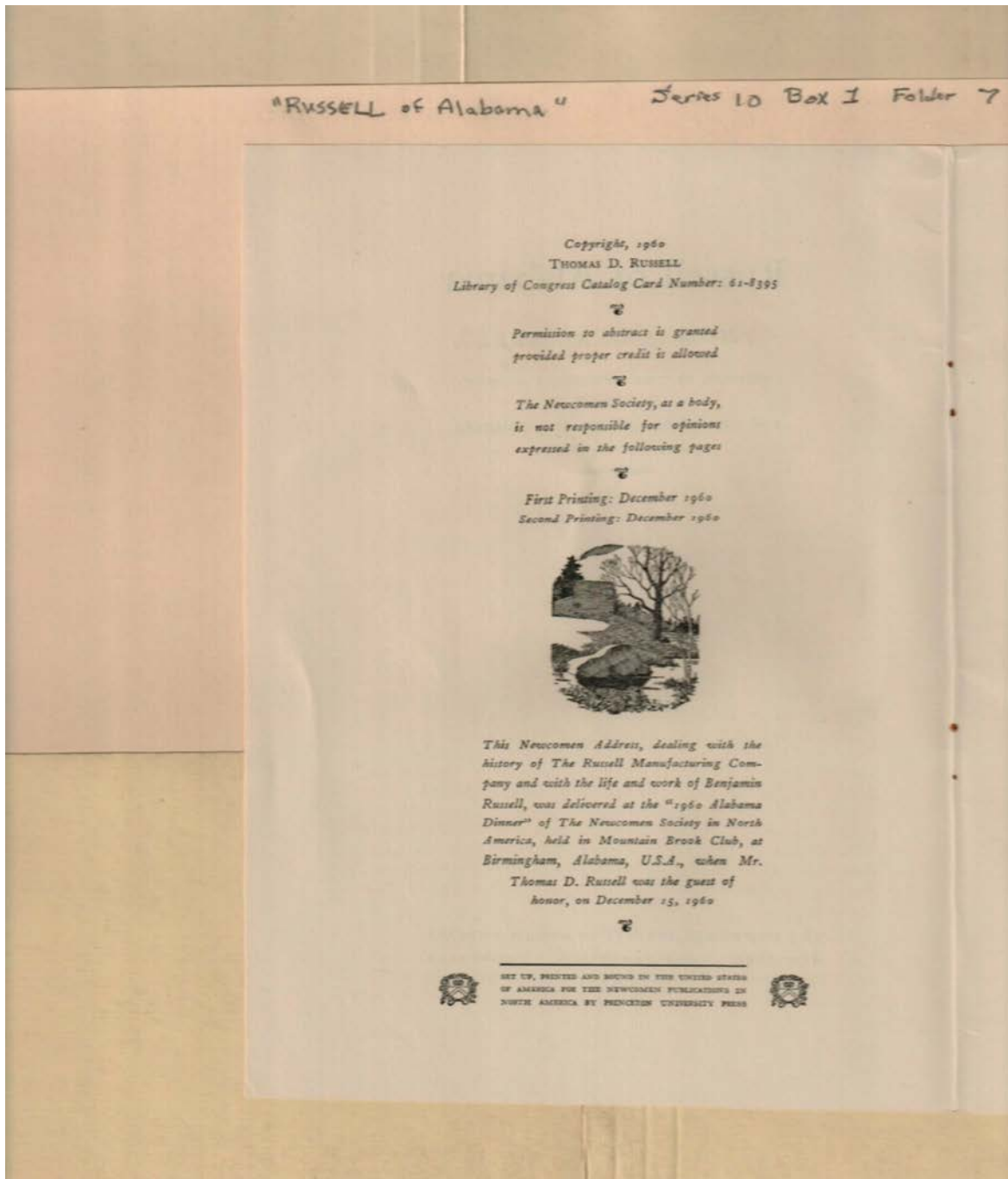
Dates:

1960

Frances Cabaniss Roberts Collection: Series 10, Box 1, Folder 7

Russell, Thomas D. "Russell of Alabama," 1960

Image 6 r10_01-07-000-0065 [Contents](#) [Index](#) [About](#)



Names:

Russell, Benjamin

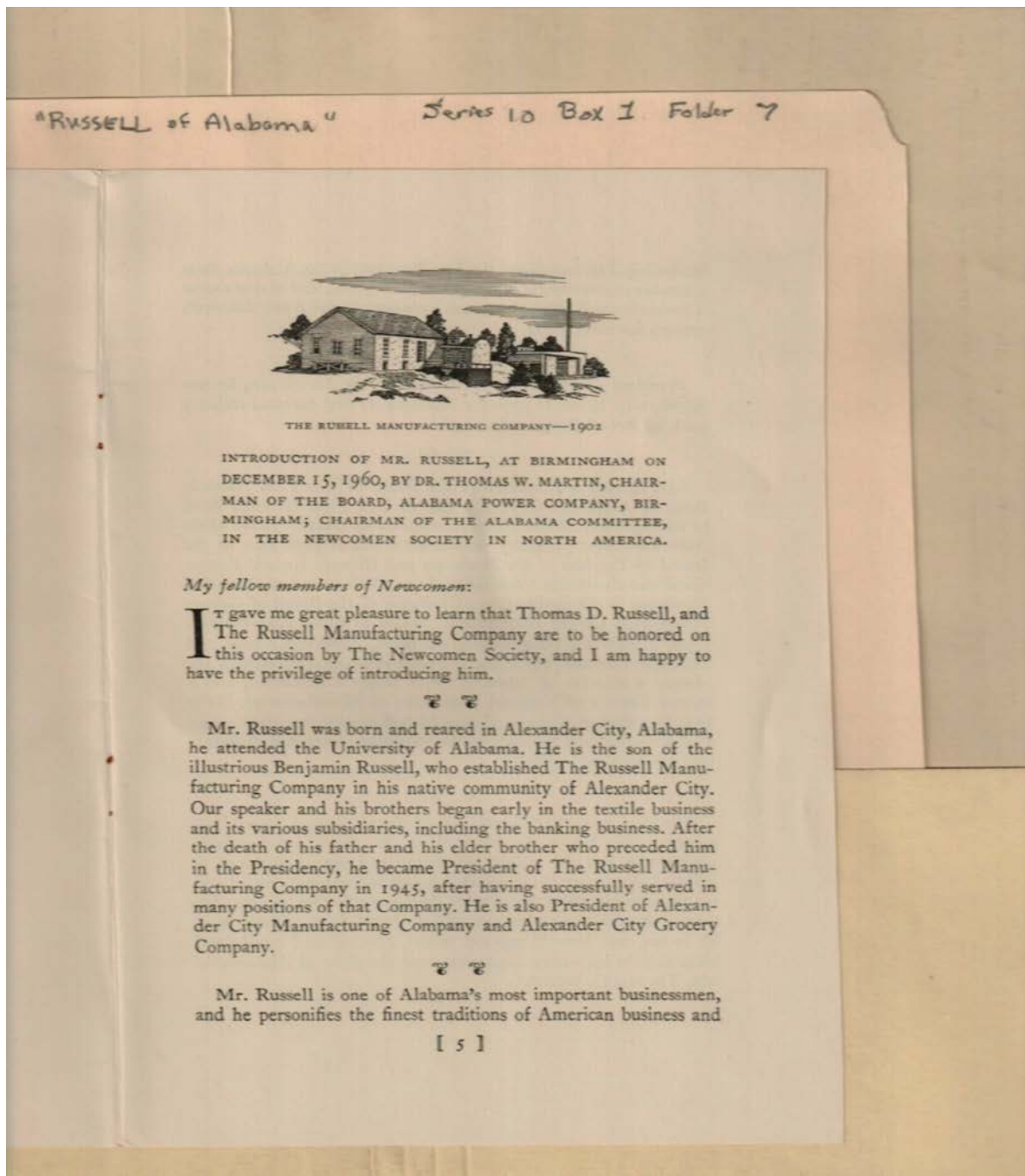
Russell, Thomas D.

Types:

booklet

Dates:

1960



Names:

Martin, Thomas W.,
Dr.

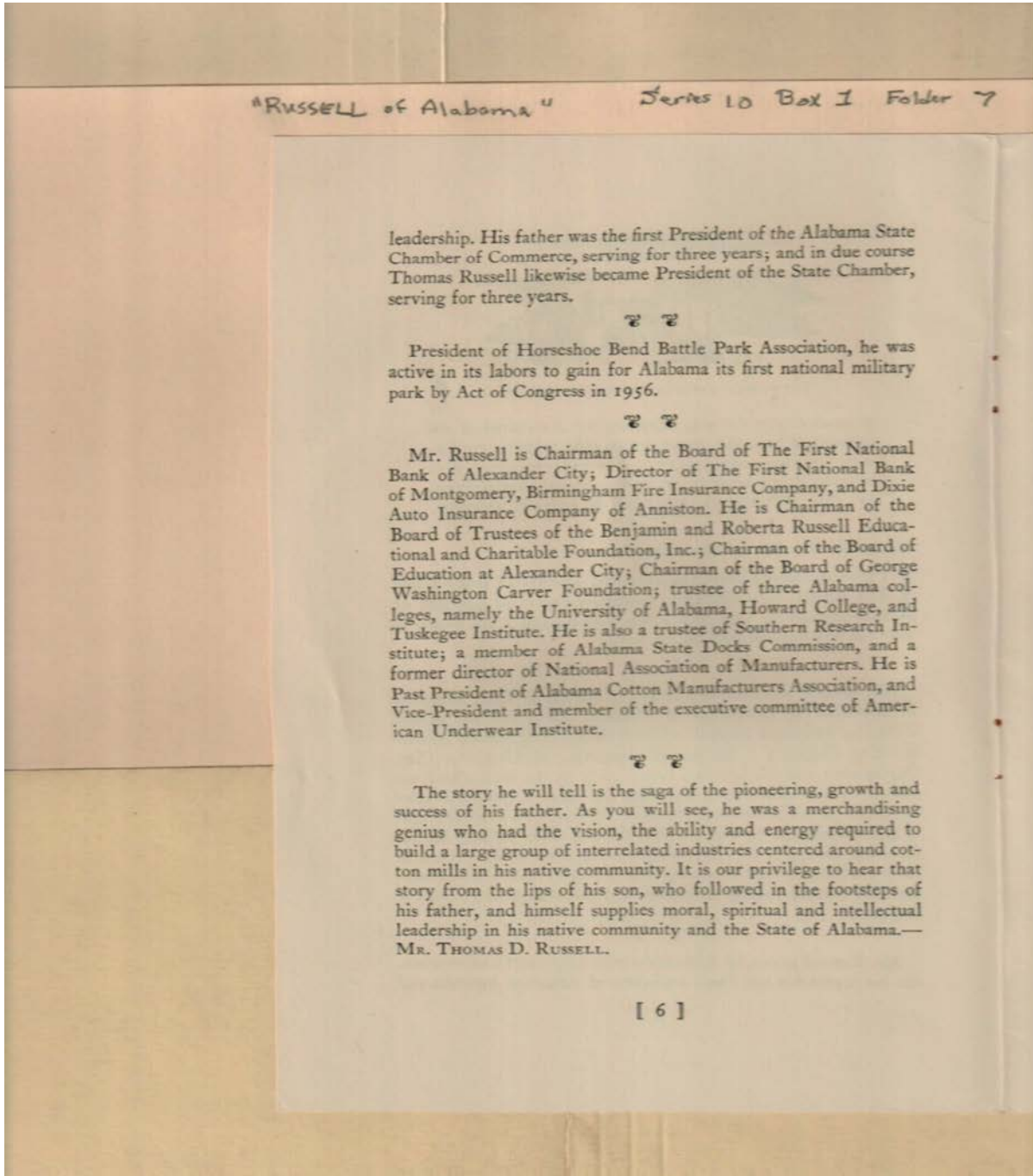
Russell, Benjamin
Russell, Thomas D.

The Russell
Manufacturing

Company

Types:

speech



Names:

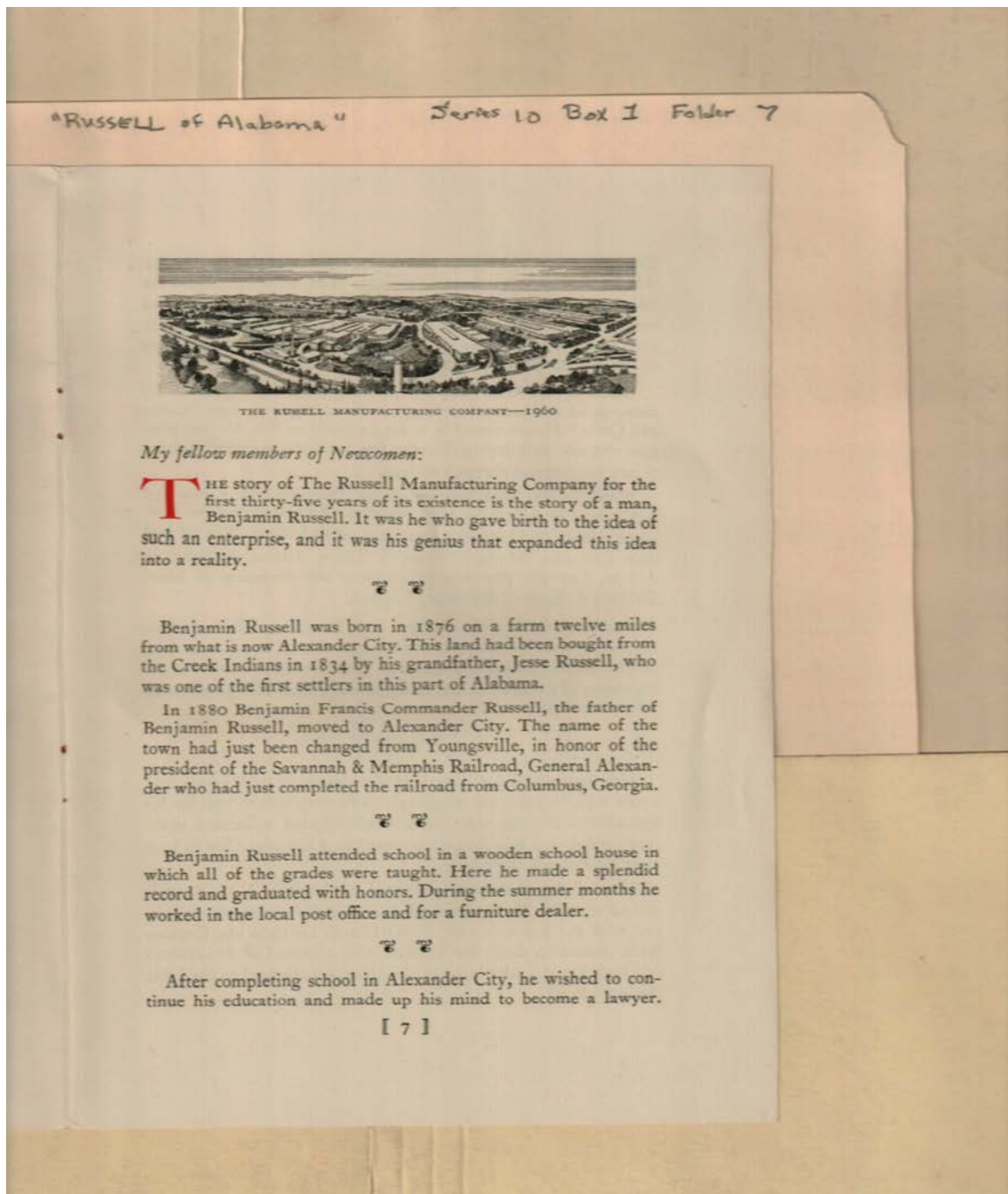
Russell, Roberta

Russell, Thomas

Russell, Thomas D.

Types:

speech



Names:

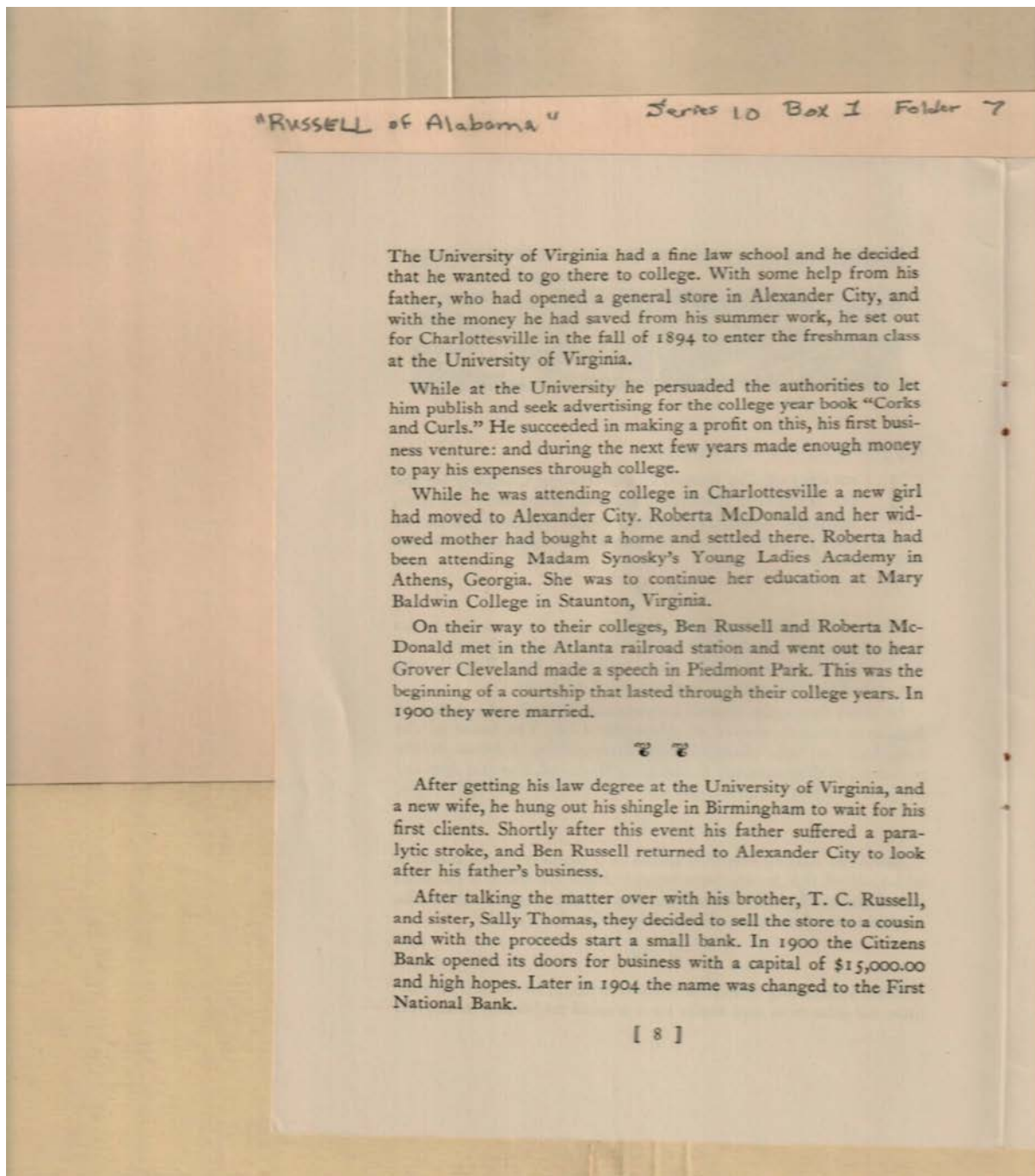
Russell, Benjamin

Russell, Benjamin
Francis Commander

Russell, Jesse

Types:

speech



Names:

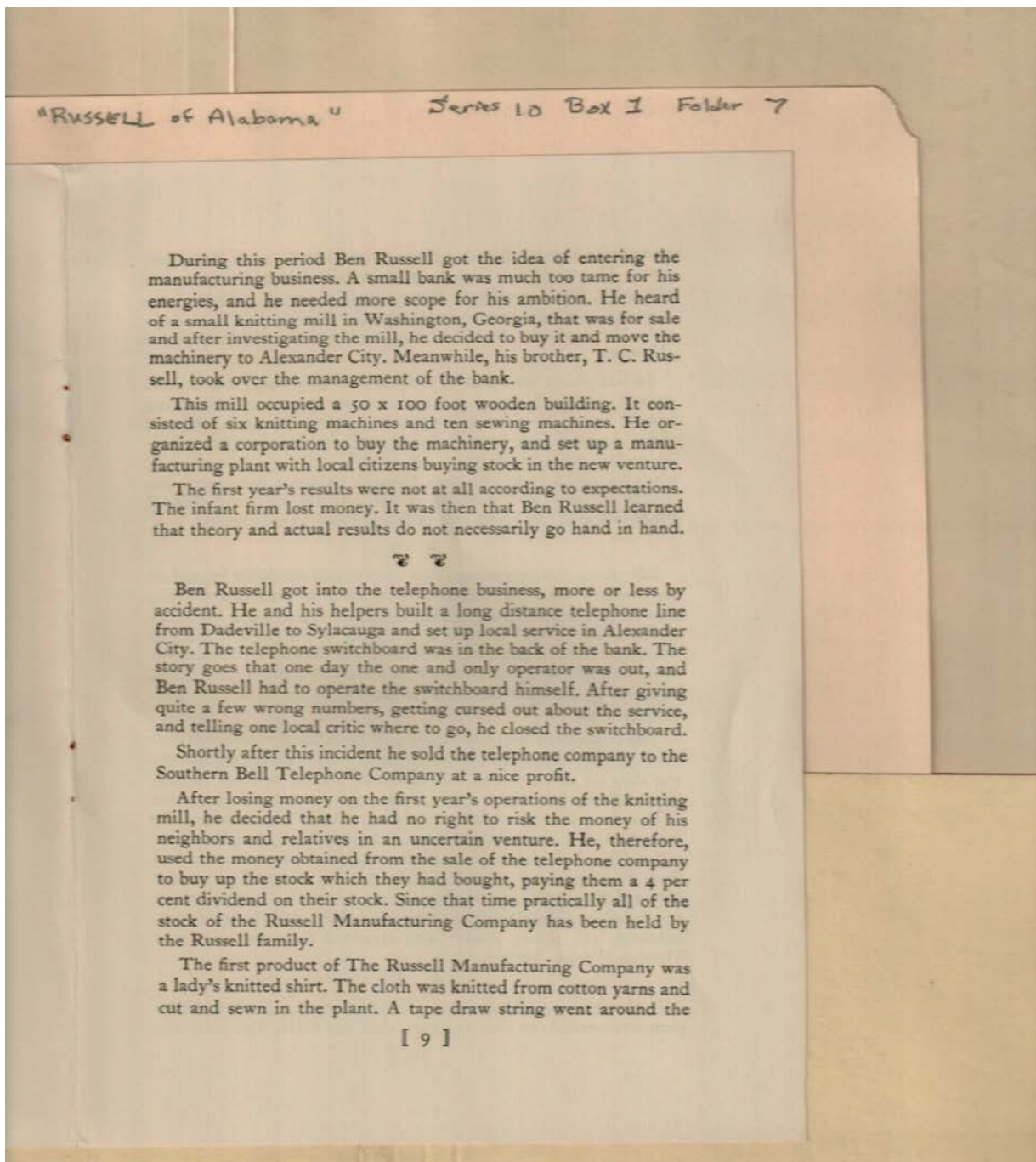
Cleveland, Grover
McDonald, Roberta

Russell, Ben
Russell, T. C.

Synosky, Madam
Thomas, Sally

Types:

speech



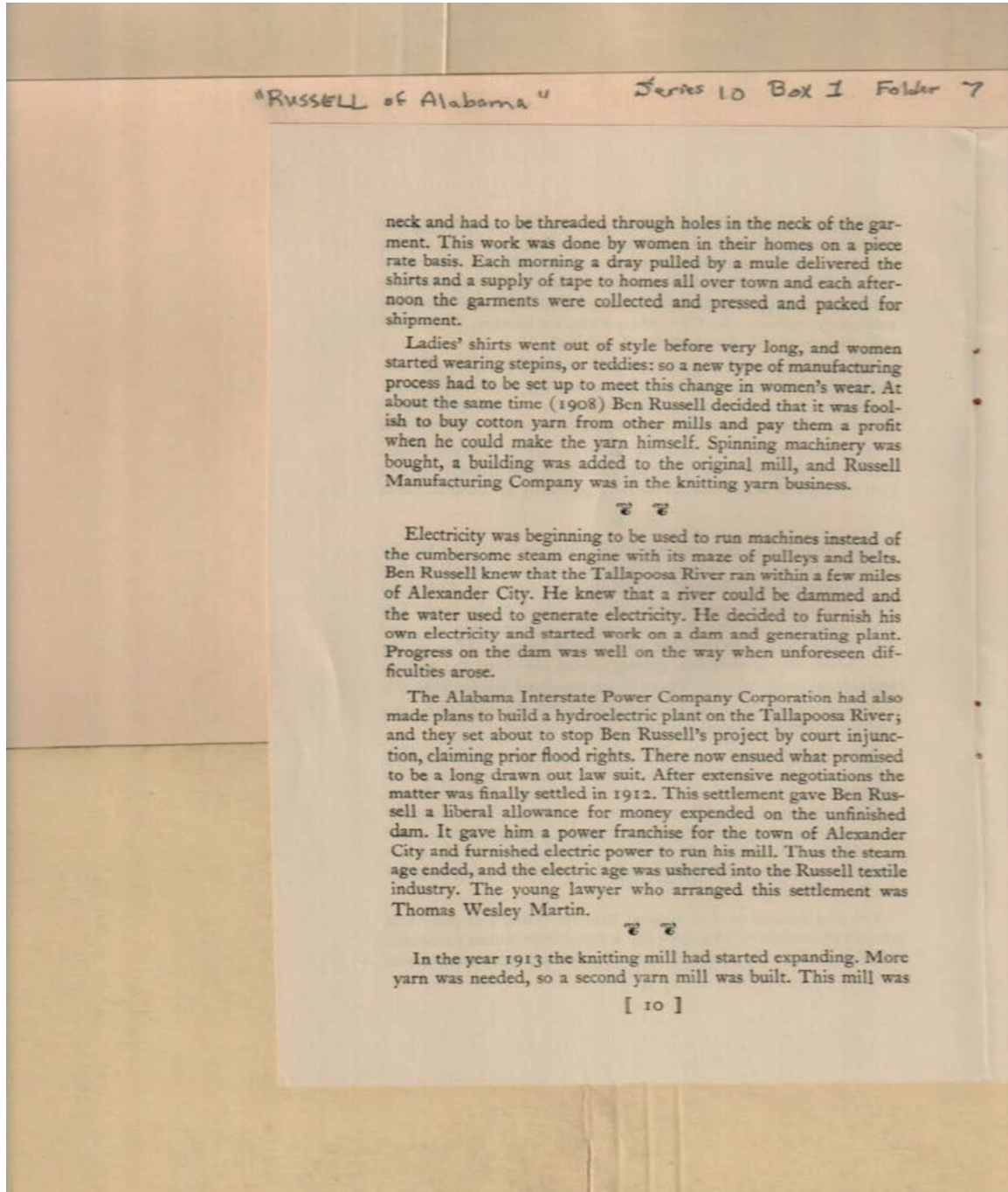
Names:

Russell, Ben

Russell, T. C.

Types:

speech



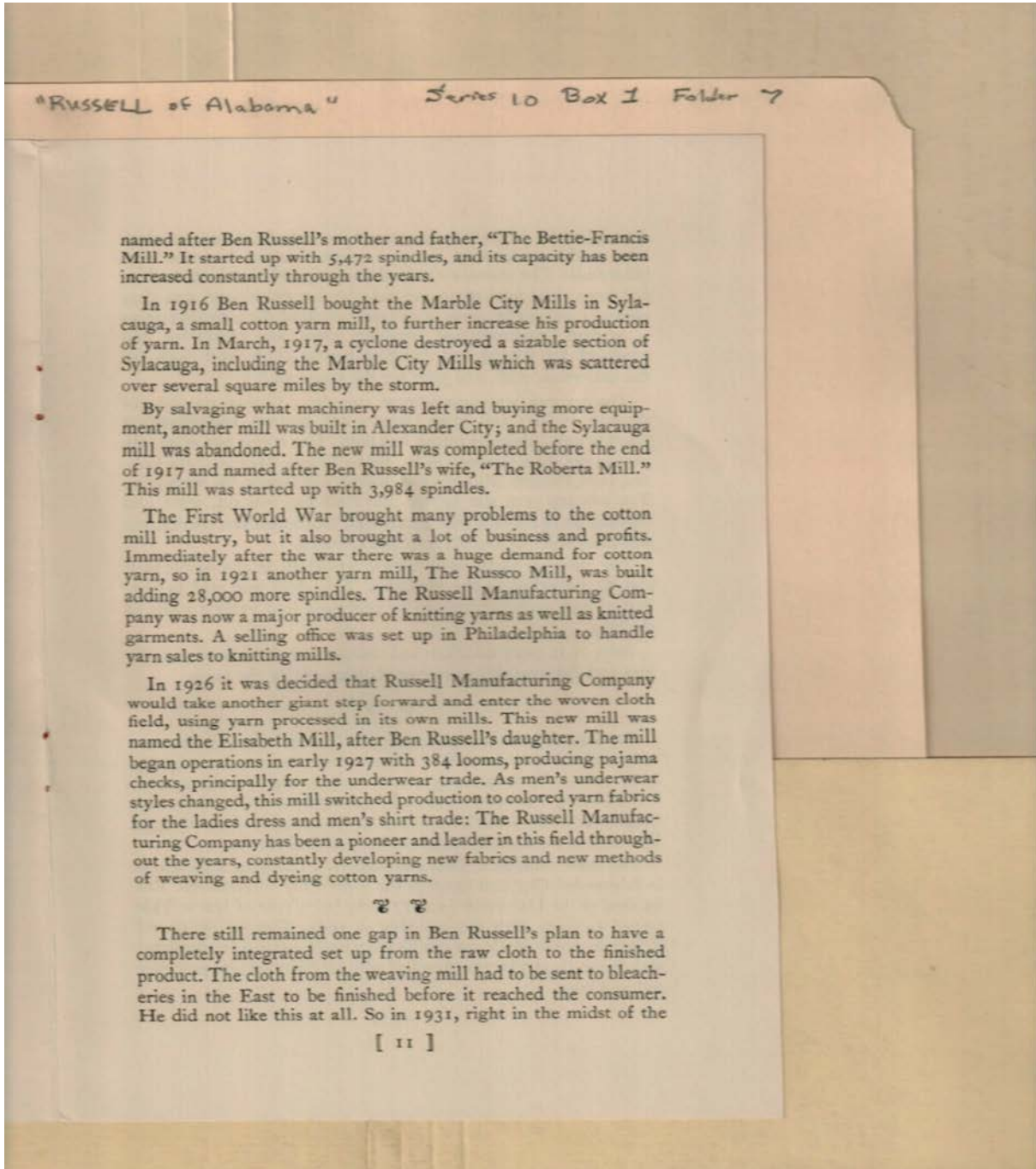
Names:

Martin, Thomas
Wesley

Russell, Ben

Types:

speech



Names:

Bettie-Francis Mill

Elisabeth Mill

Marble City Mills

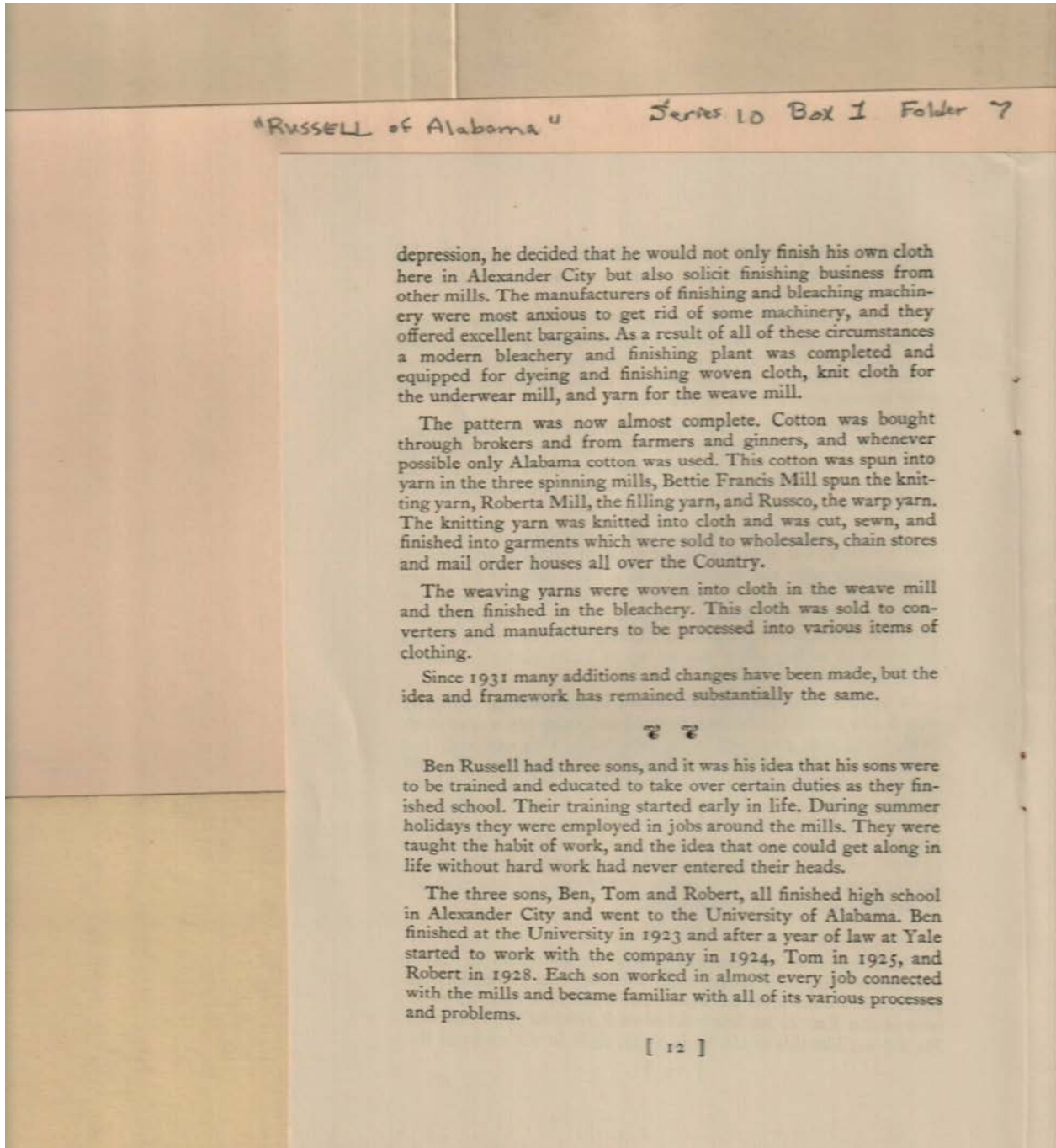
Roberta Mill

Russco Mill

Russell, Ben

Types:

speech



Names:

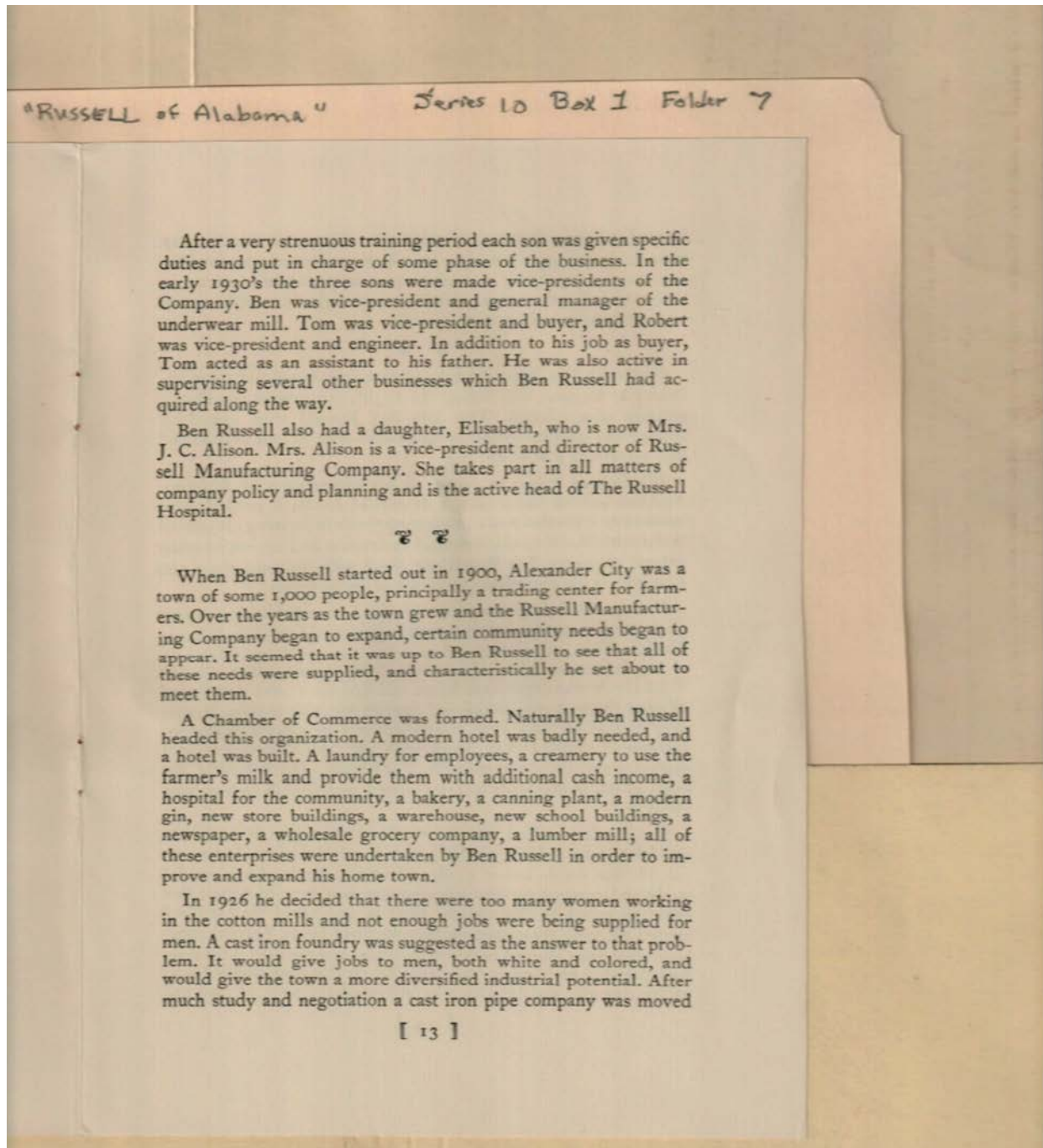
Russell, Ben

Russell, Robert

Russell, Tom

Types:

speech



Names:

Aliison, J. C., Mrs.

Alison, J. C.

Russell, Ben

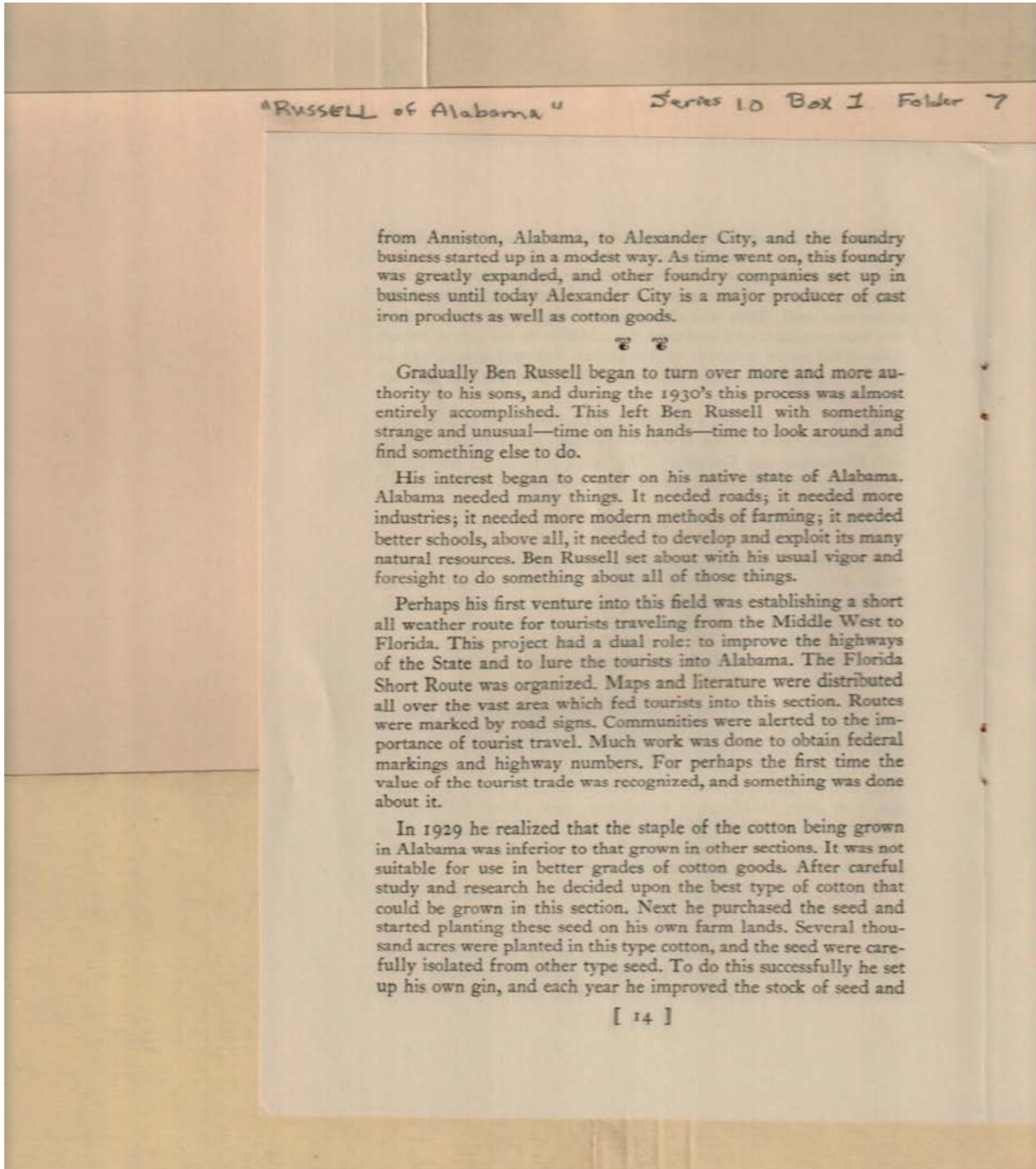
Russell, Elisabeth

Russell, Robert

Russell, Tom

Types:

speech

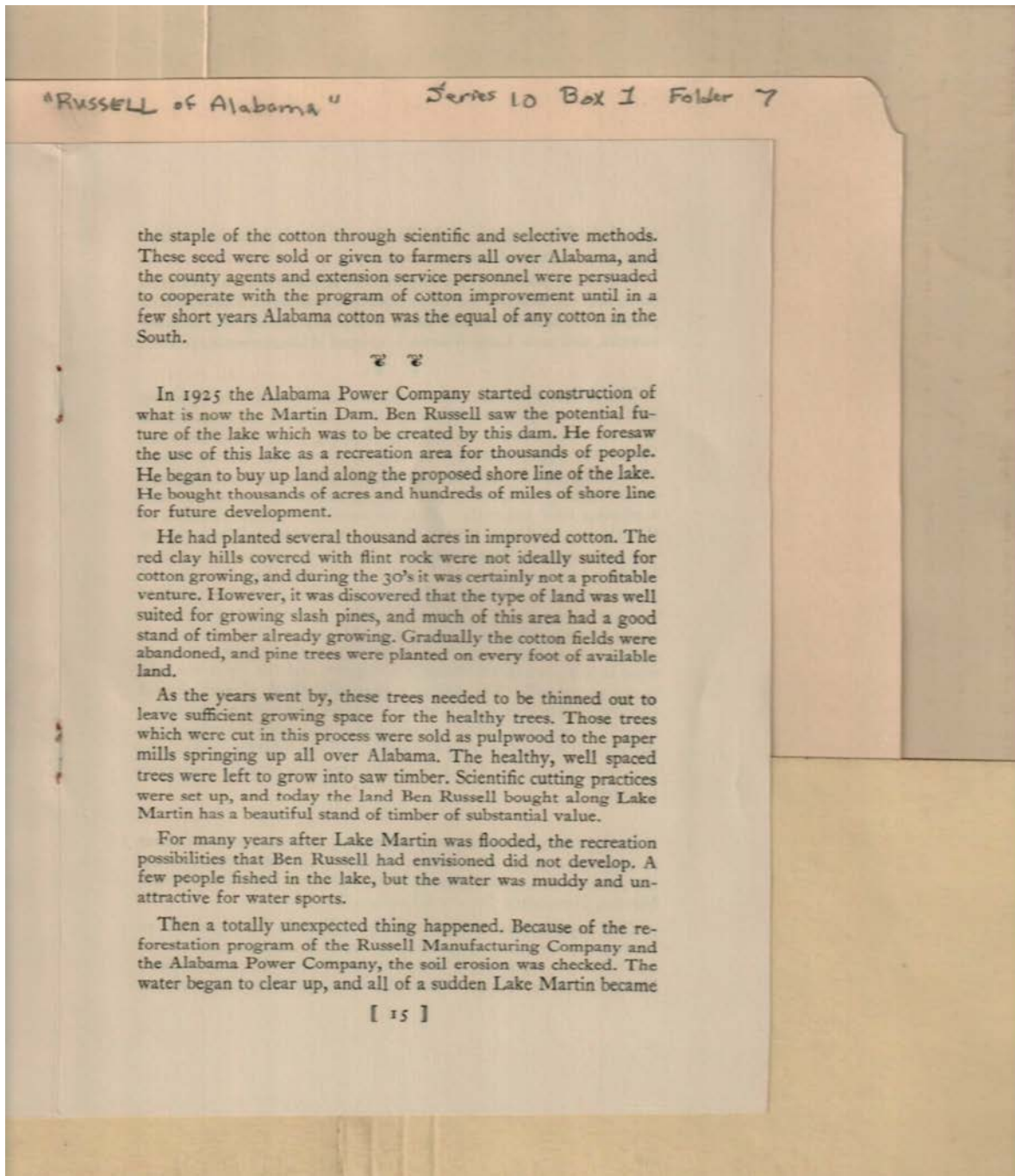


Names:

Russell, Ben

Types:

speech

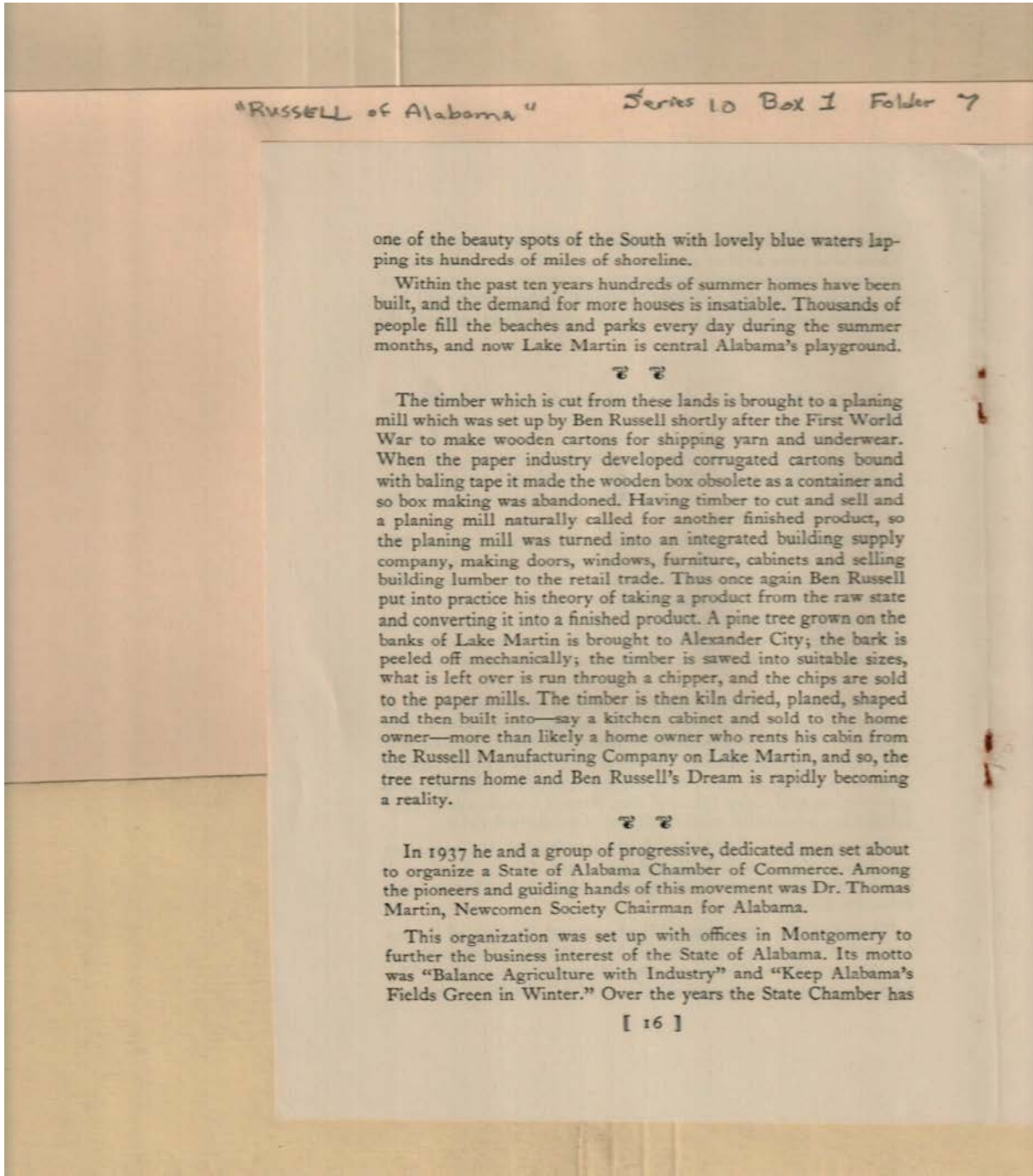


Names:

Russell, Ben

Types:

speech



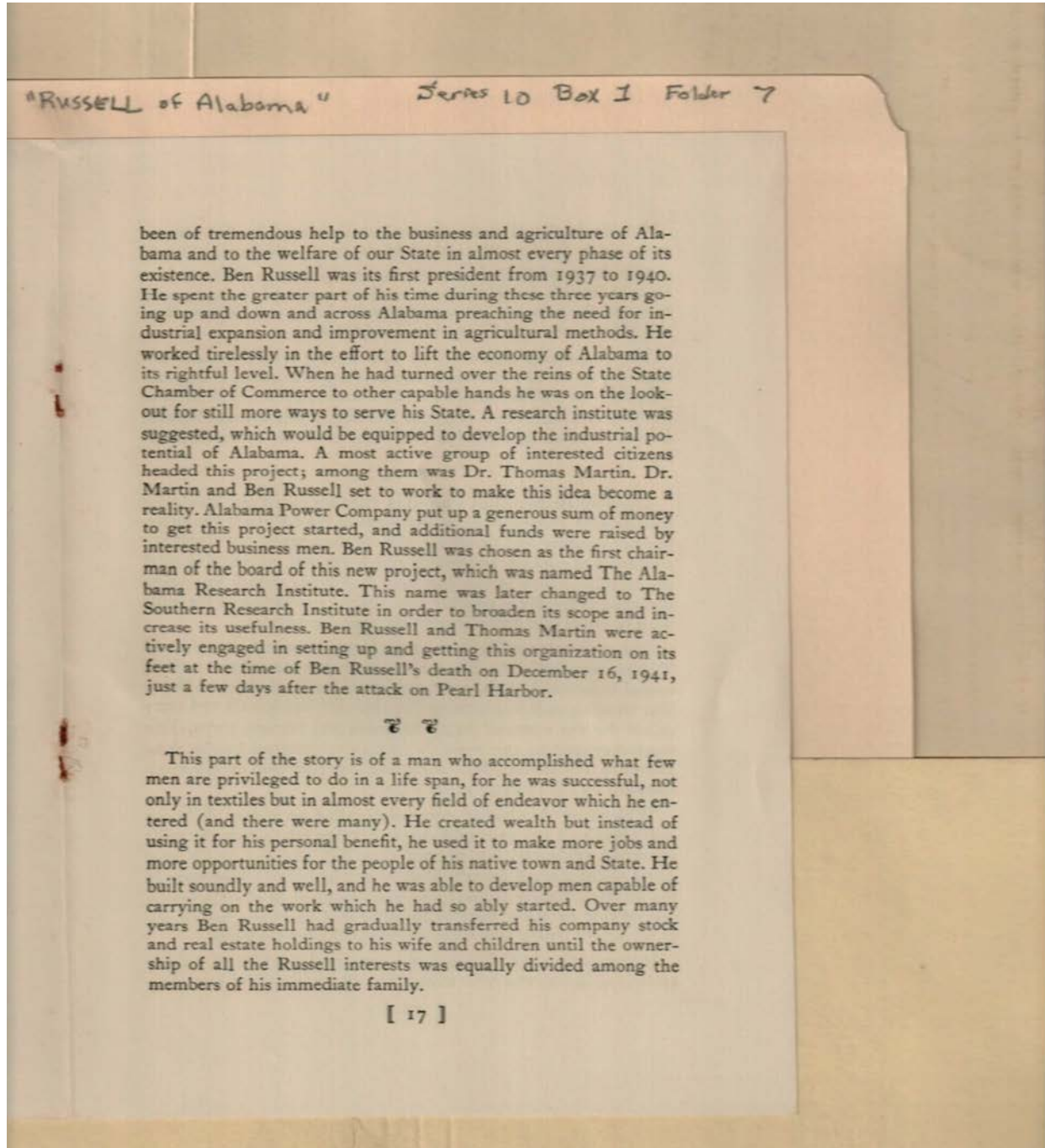
Names:

Martin, Thomas, Dr.

Russell, Ben

Types:

speech



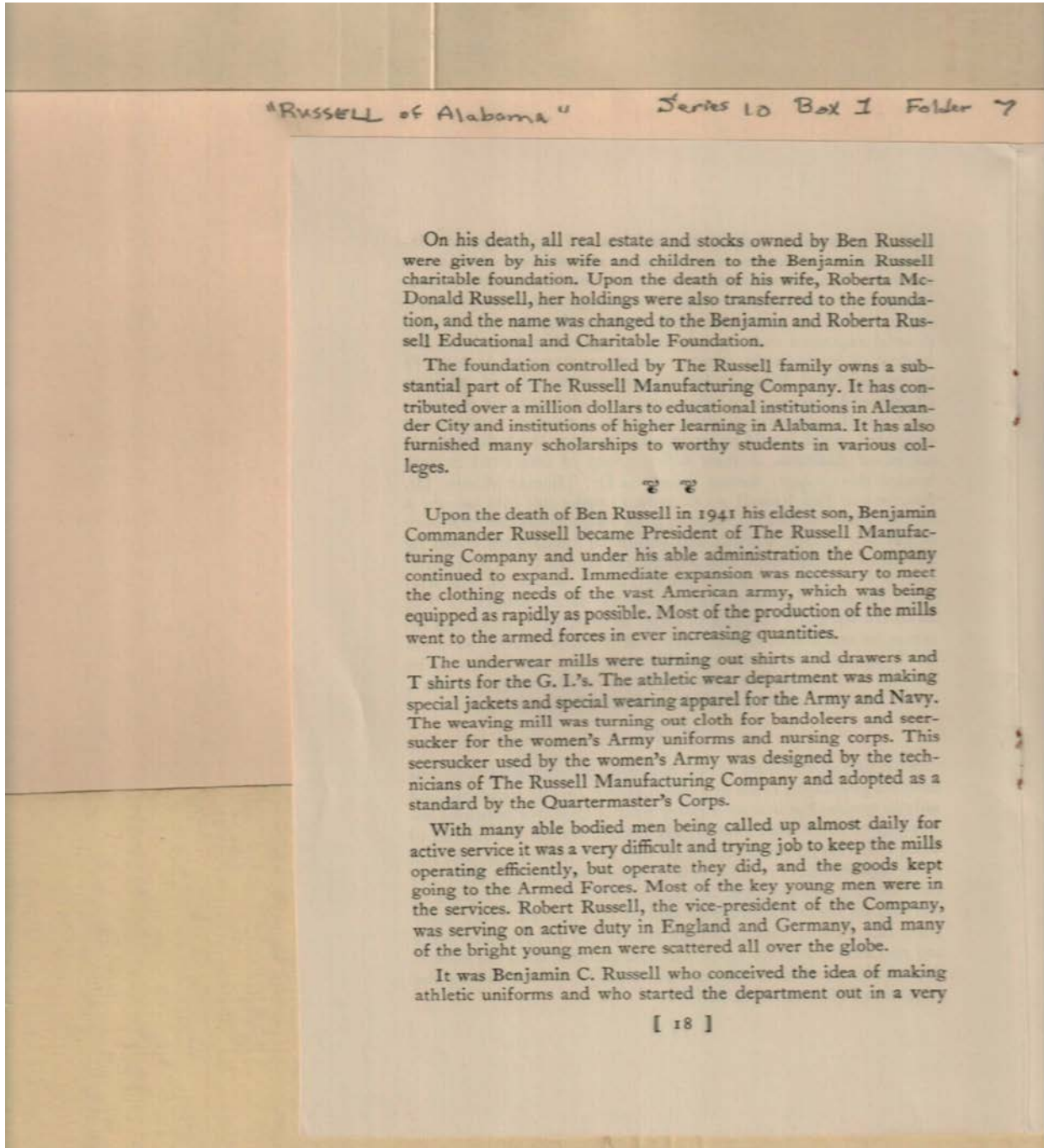
Names:

Martin, Thomas, Dr.

Russell, Ben

Types:

speech



Names:

Russell, Ben
Russell, Benjamin C.

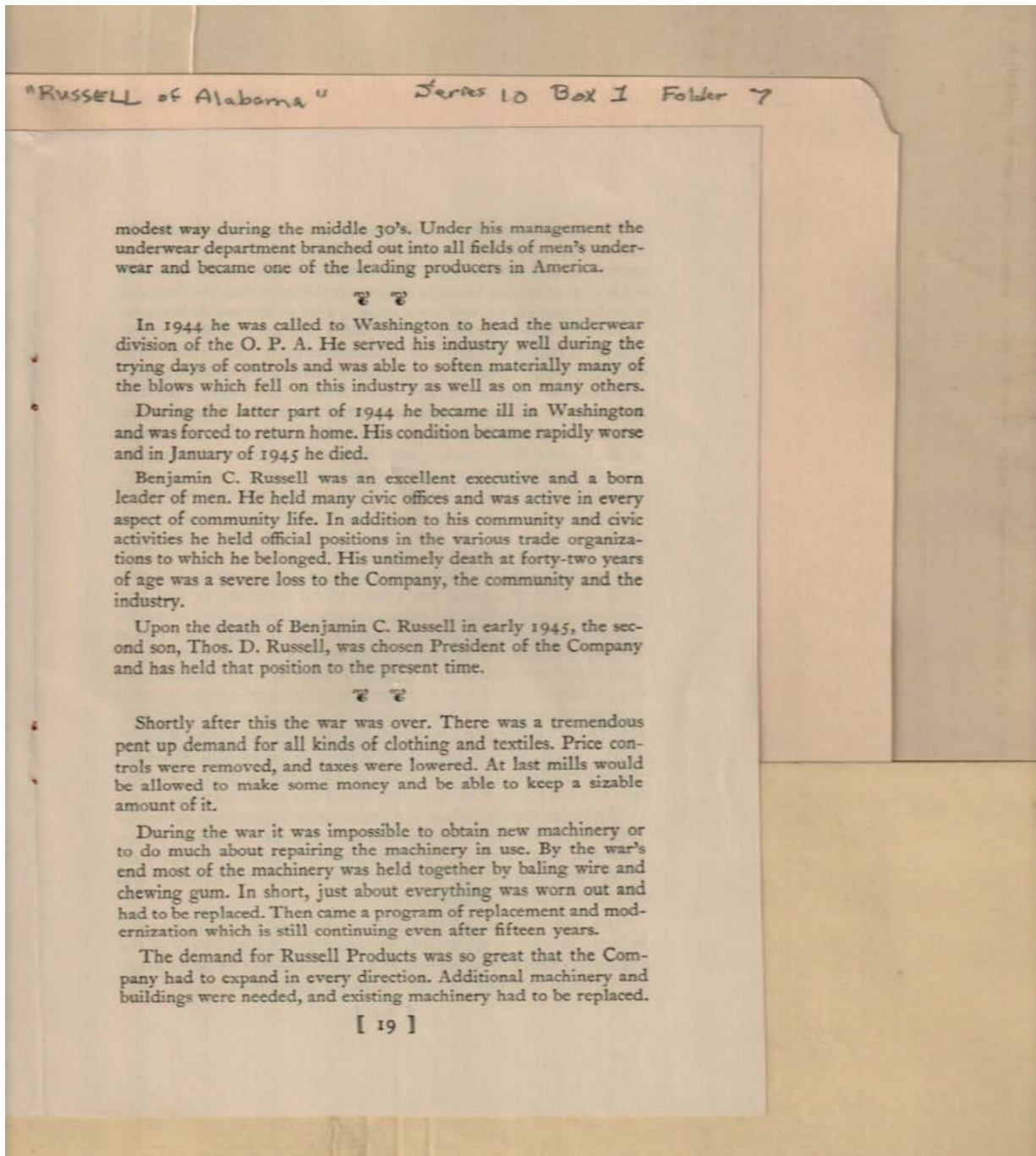
Russell, Benjamin
Commander

Russell, Robert

Russell, Roberta
McDonald

Types:

speech



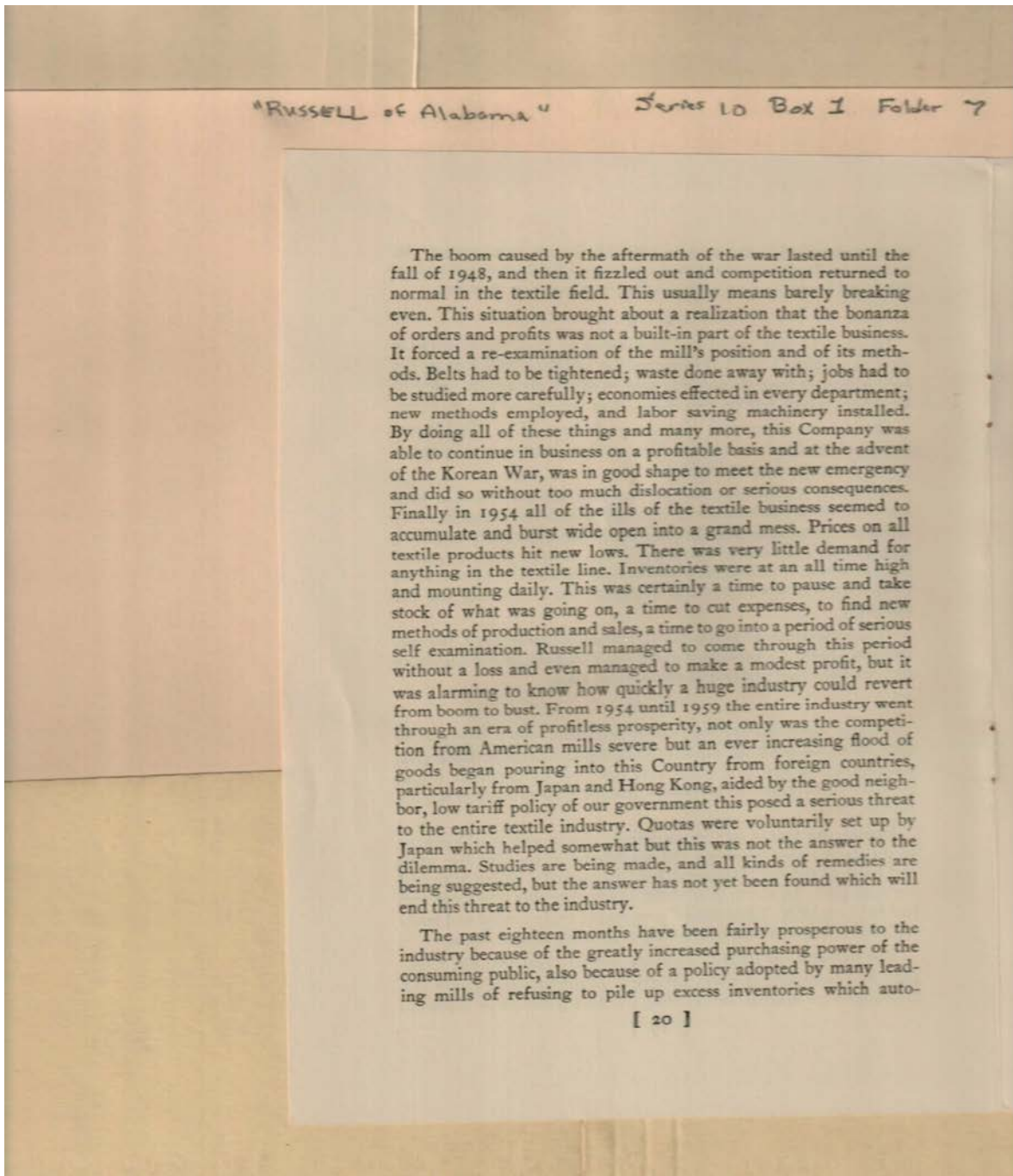
Names:

Russell, Benjamin C.

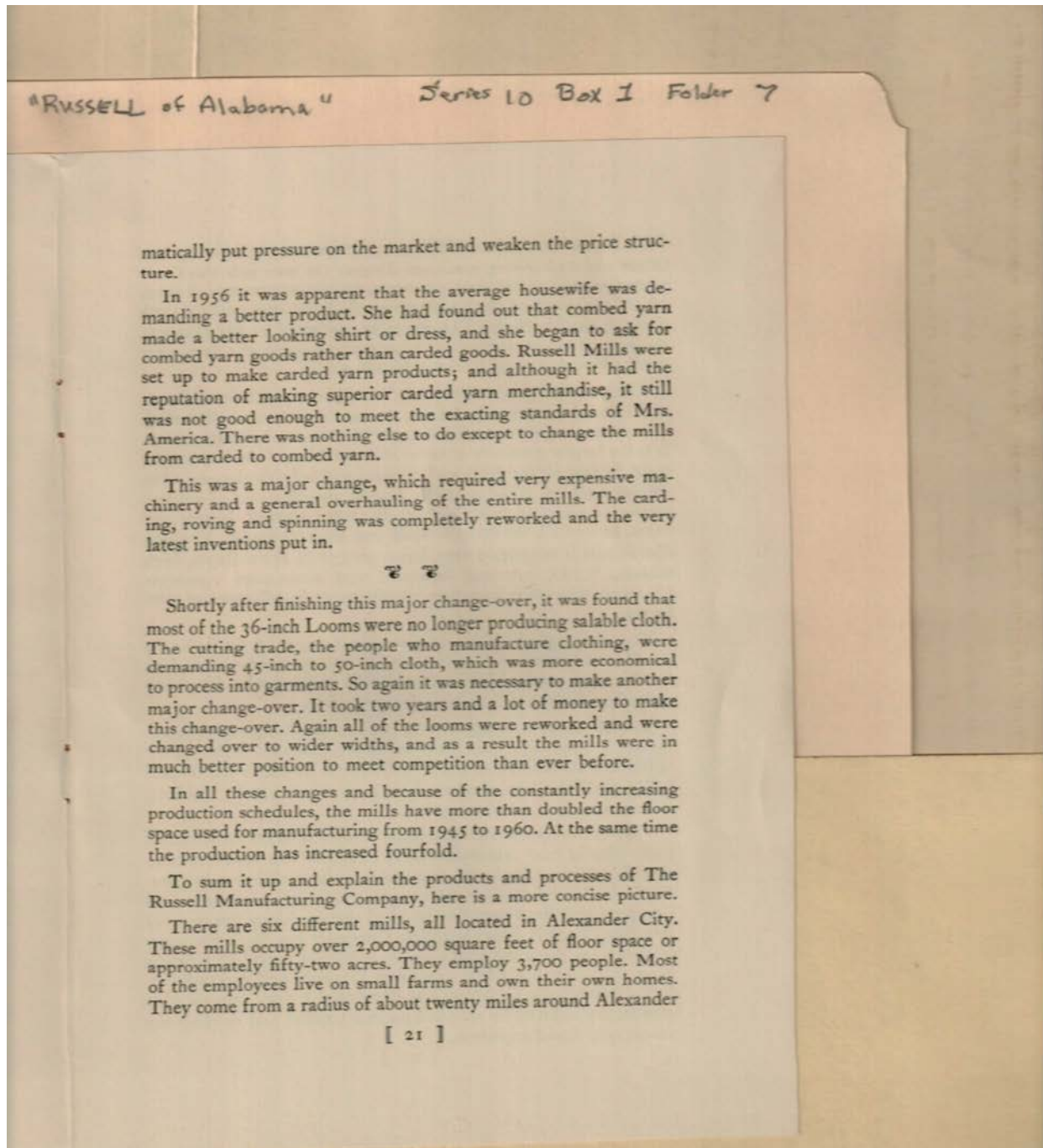
Russell, Thomas D.

Types:

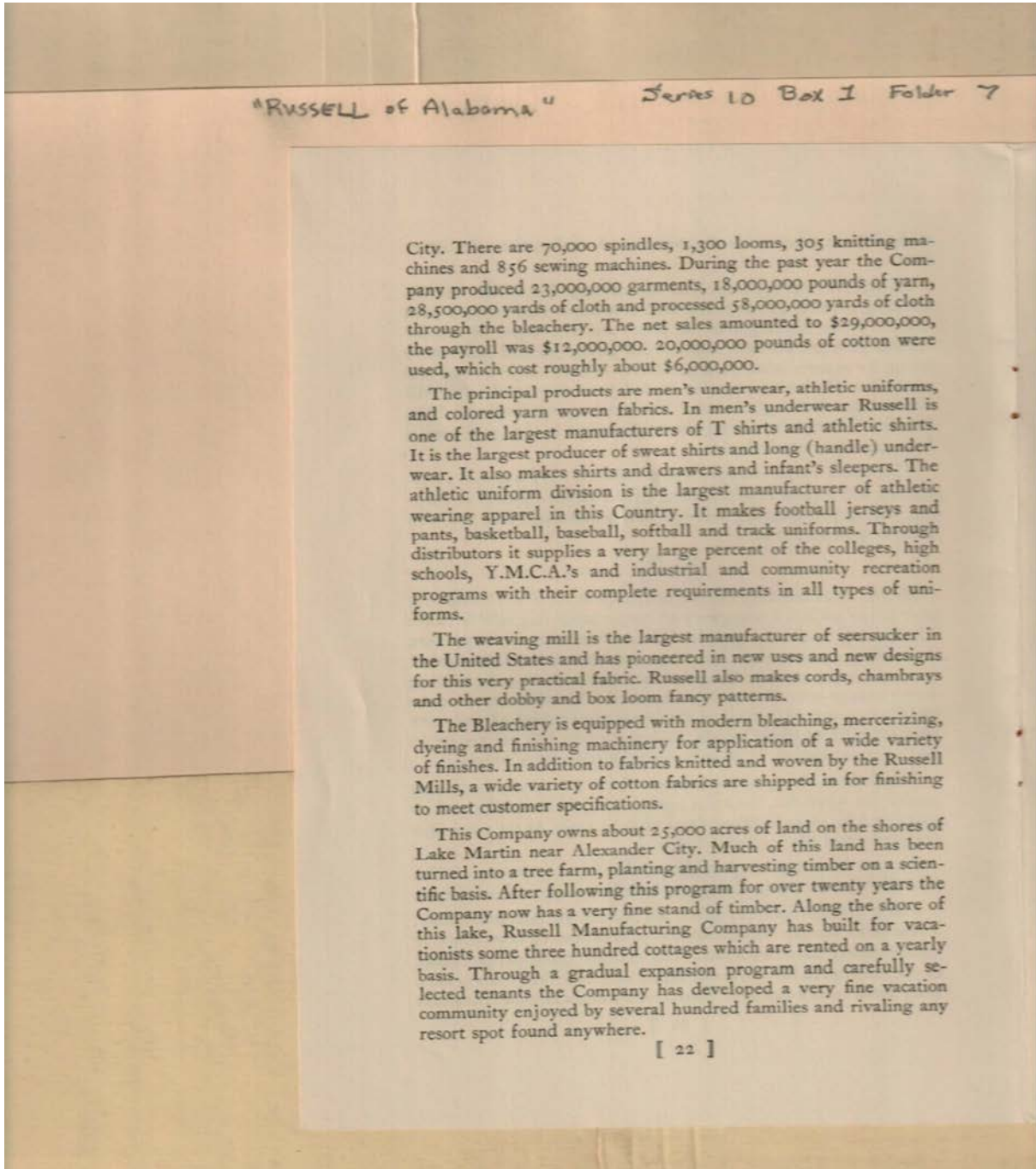
speech



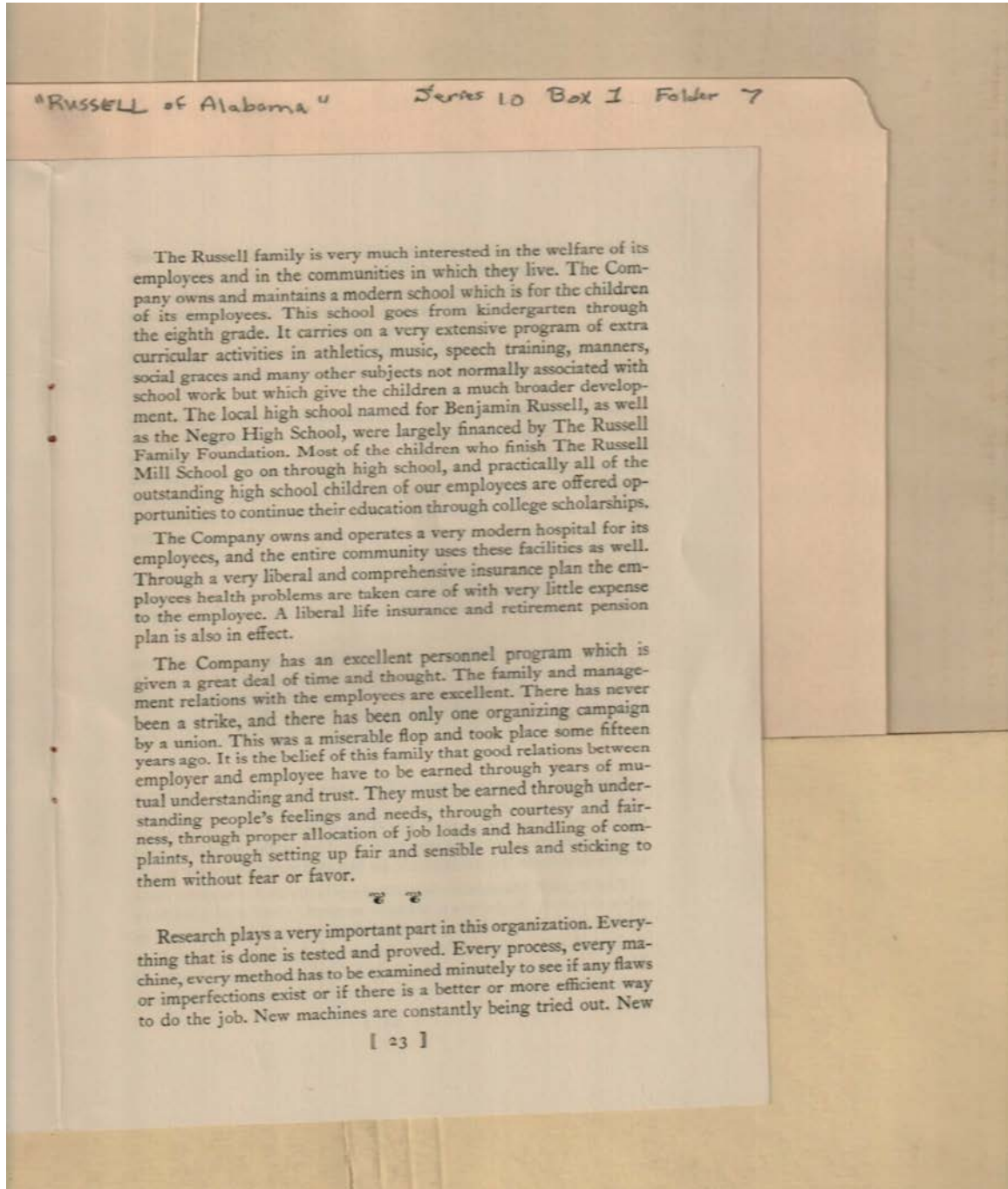
Types:
speech



Types:
speech



Types:
speech

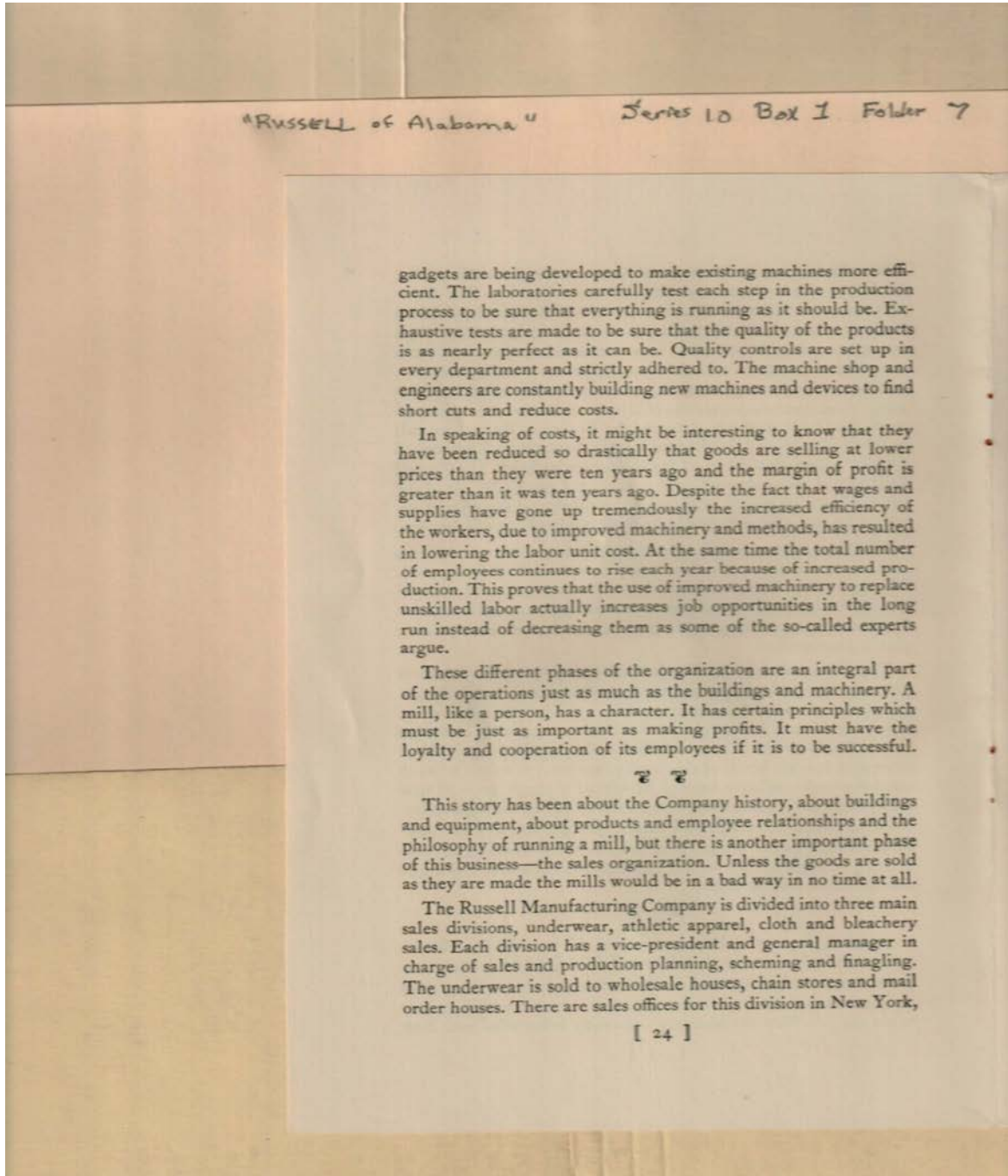


Names:

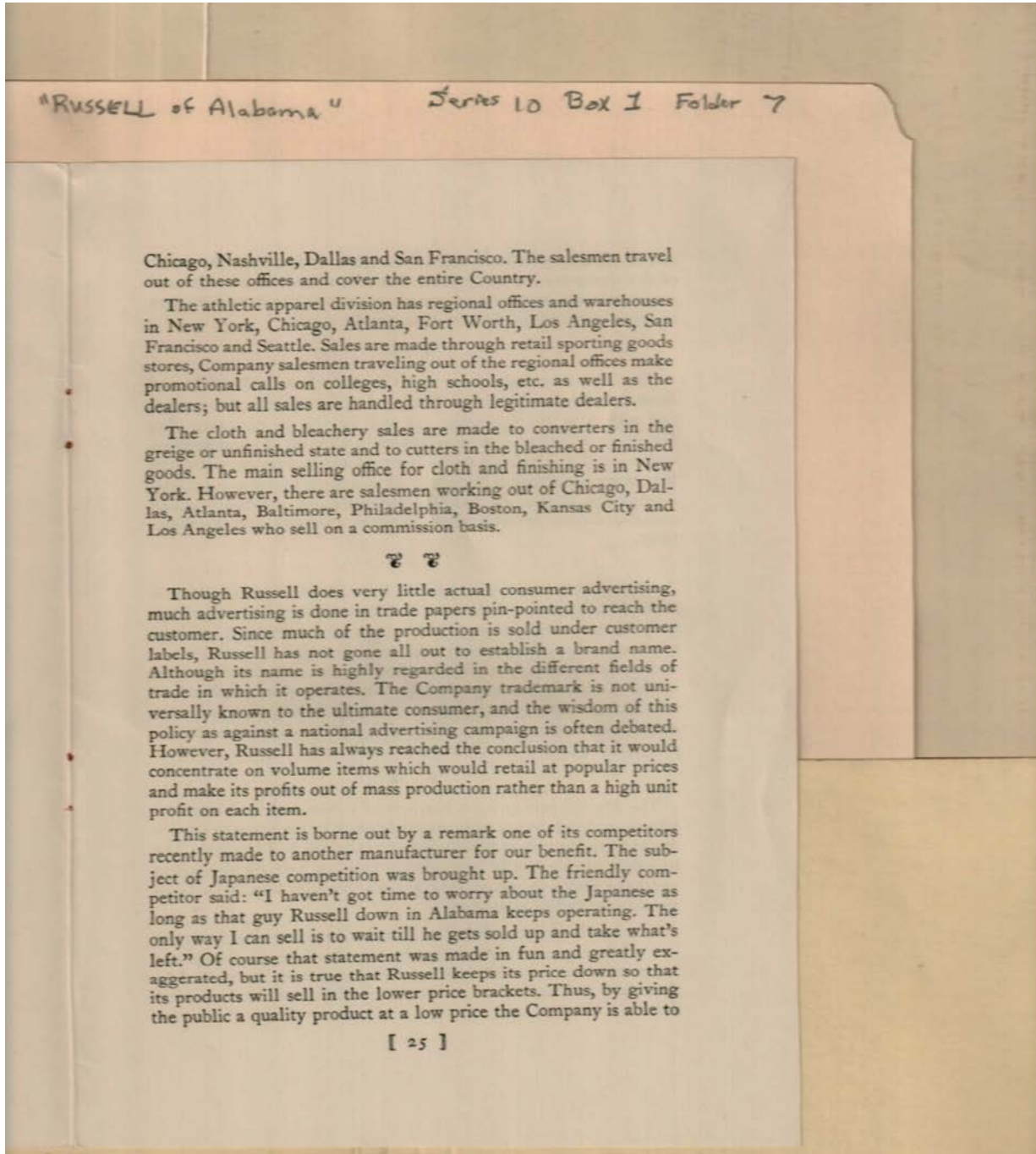
Russell, Benjamin

Types:

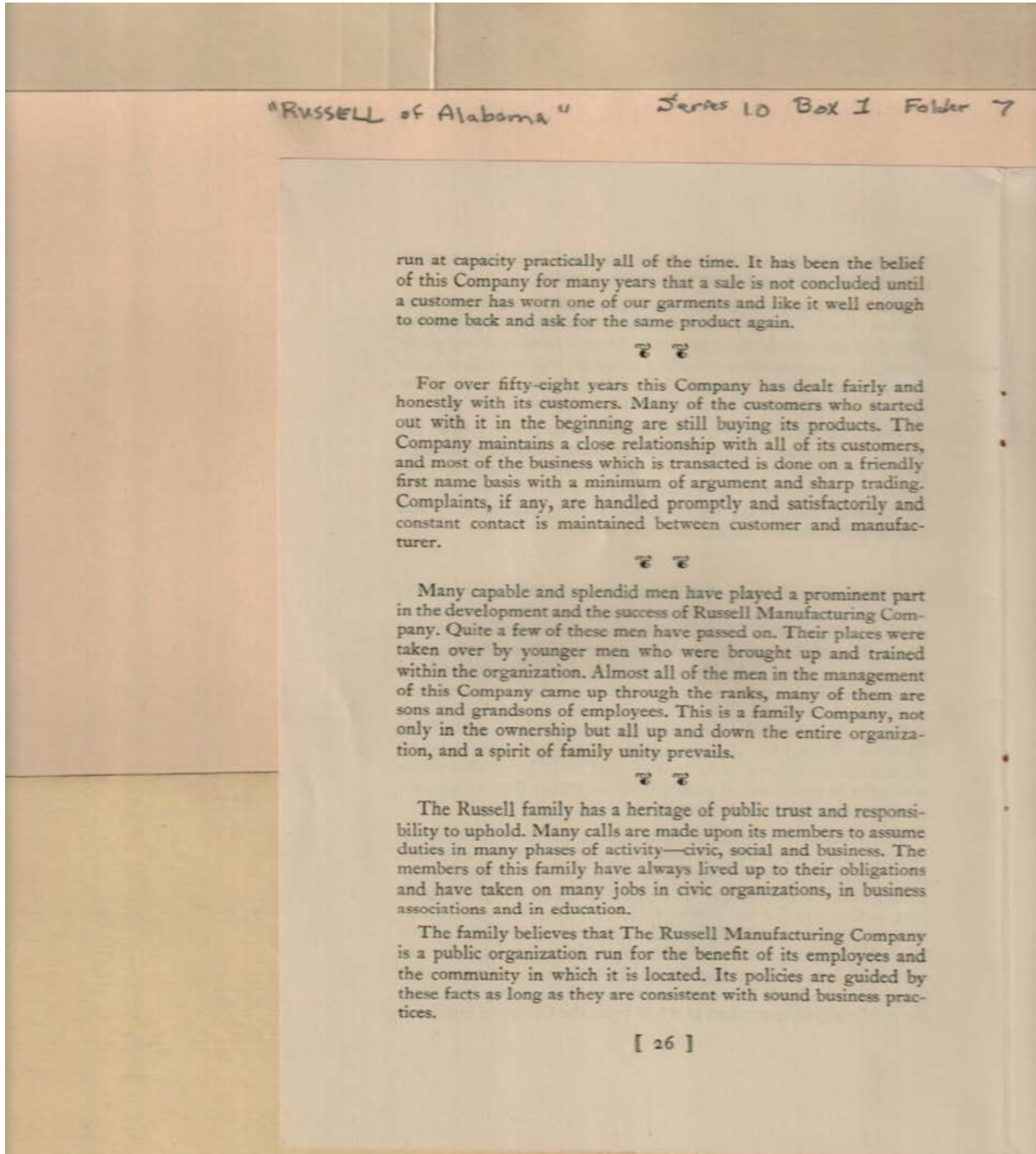
speech



Types:
speech



Types:
speech

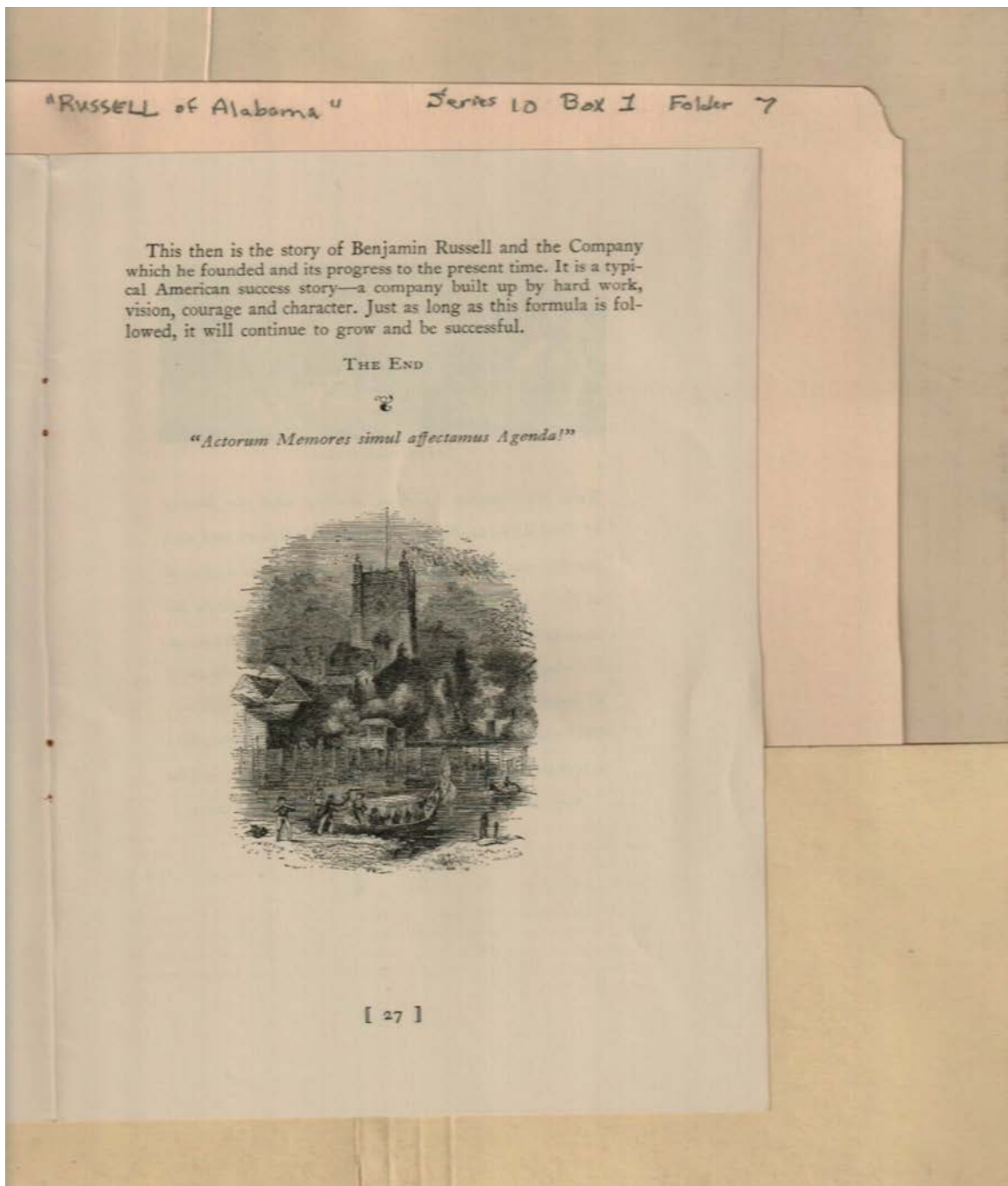


Types:
speech

Frances Cabaniss Roberts Collection: Series 10, Box 1, Folder 7

Russell, Thomas D. "Russell of Alabama," 1960

Image 29 r10_01-07-000-0090 [Contents](#) [Index](#) [About](#)

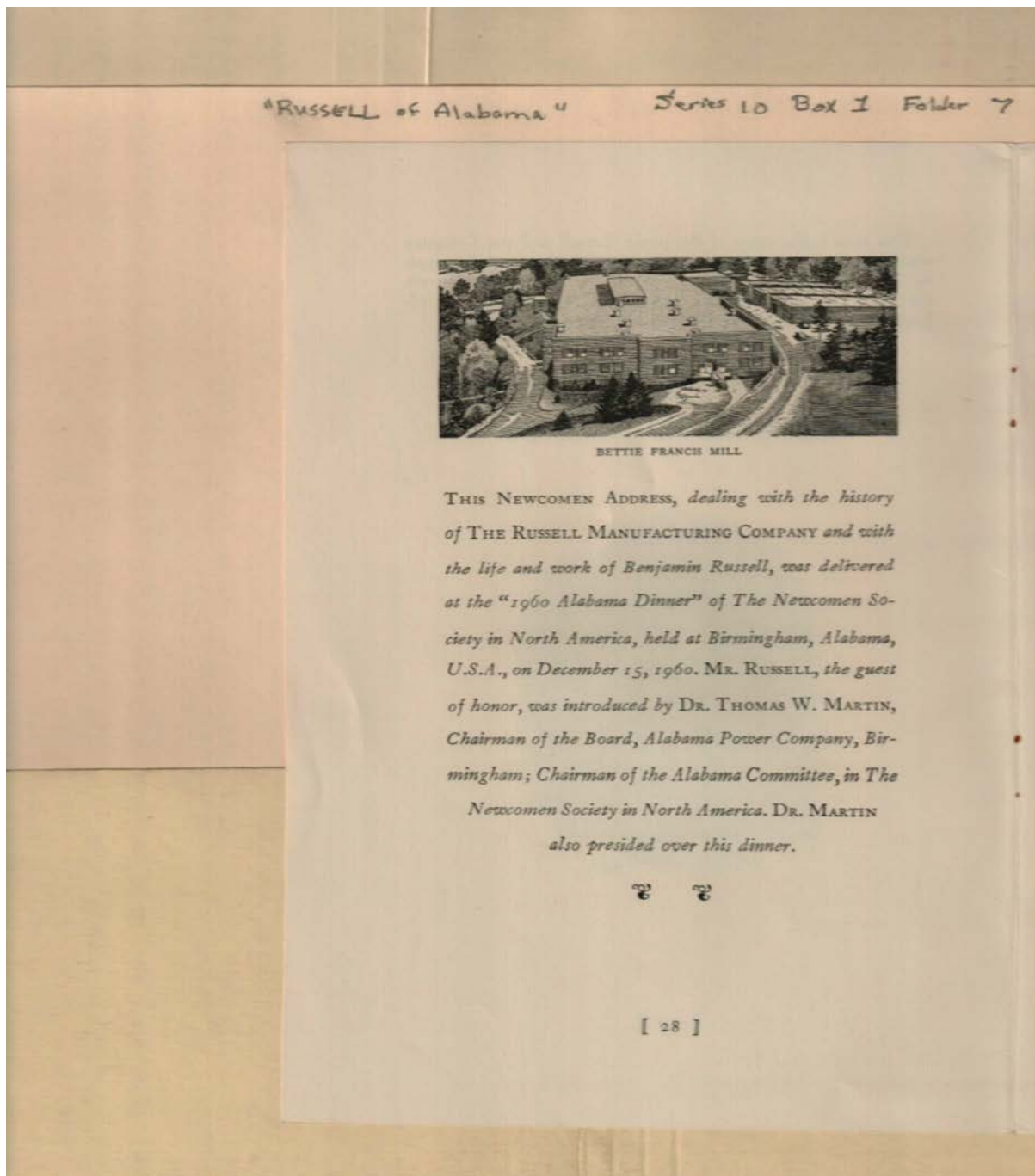


Names:

Russell, Benjamin

Types:

speech



Names:

Martin, Thomas W.,
Dr.

Newcomem Address
Russell, Benjamin

Places:

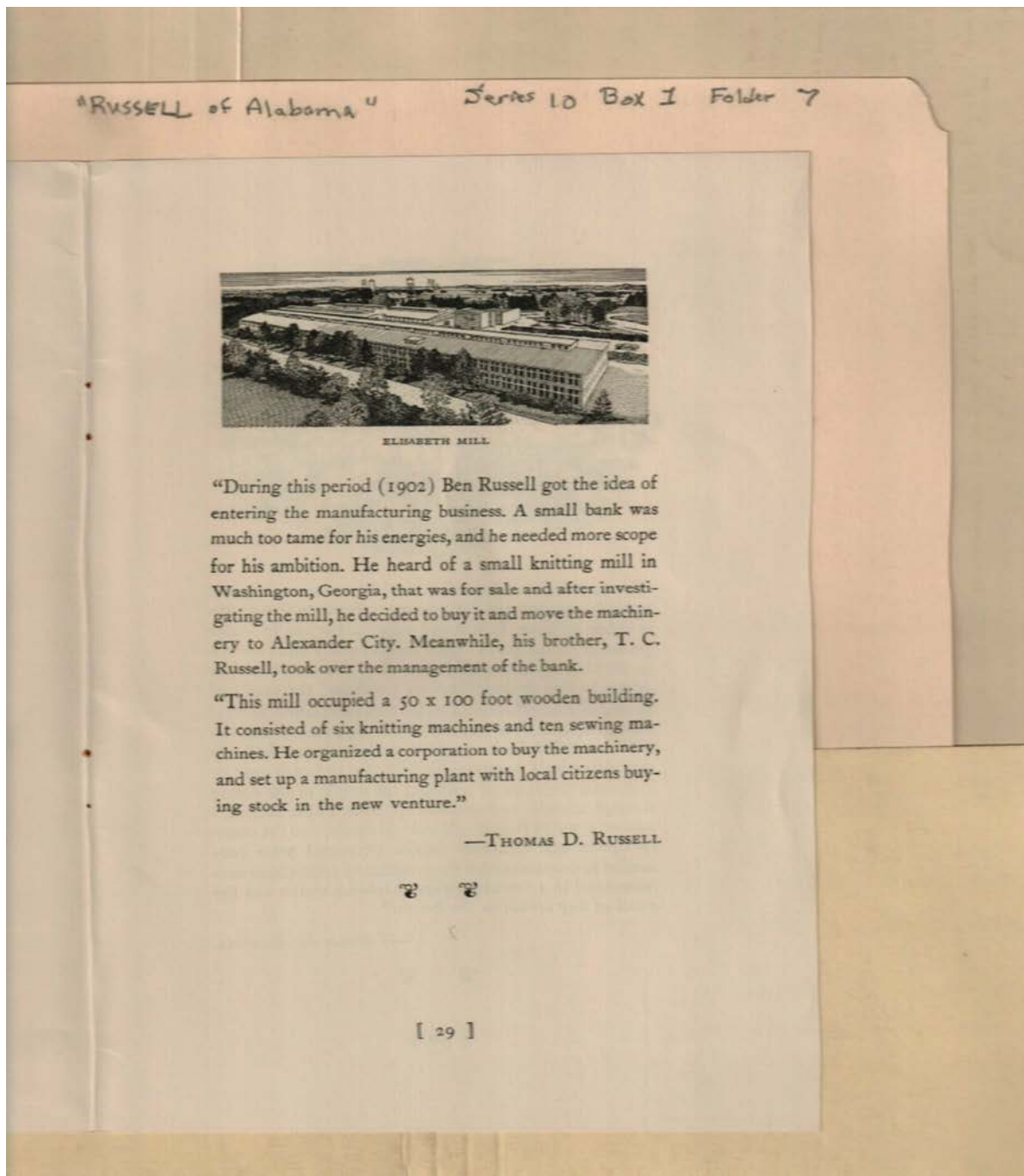
Birmingham, AL

Types:

booklet

Dates:

Dec 15, 1960



Names:

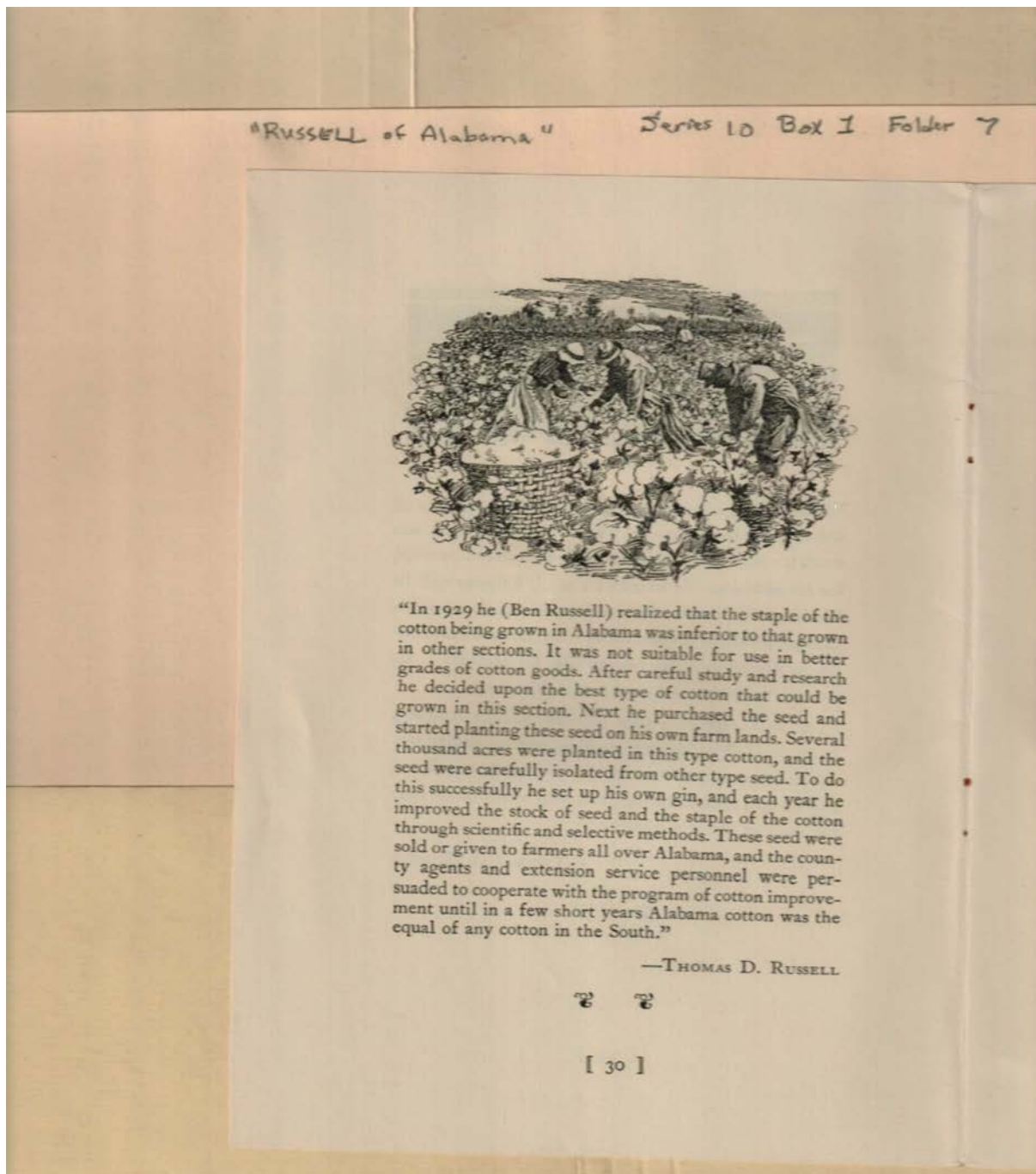
Russell, Ben

Russell, T. C.

Russell, Thomas D.

Types:

booklet



Names:

Russell, Ben

Russell, Thomas D.

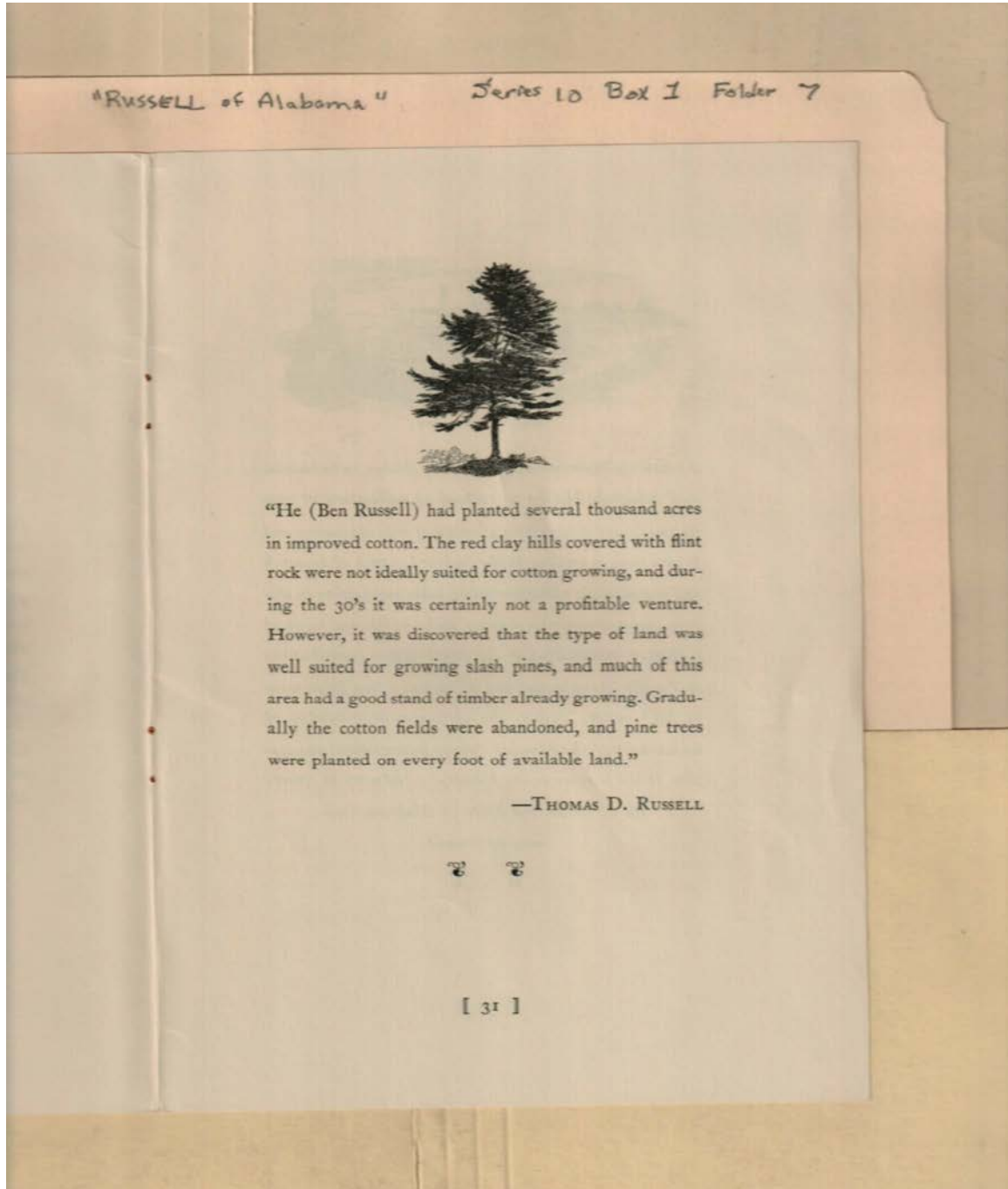
Types:

booklet

Frances Cabaniss Roberts Collection: Series 10, Box 1, Folder 7

Russell, Thomas D. "Russell of Alabama," 1960

Image 33 r10_01-07-000-0094 [Contents](#) [Index](#) [About](#)



Names:

Russell, Ben

Russell, Thomas D.

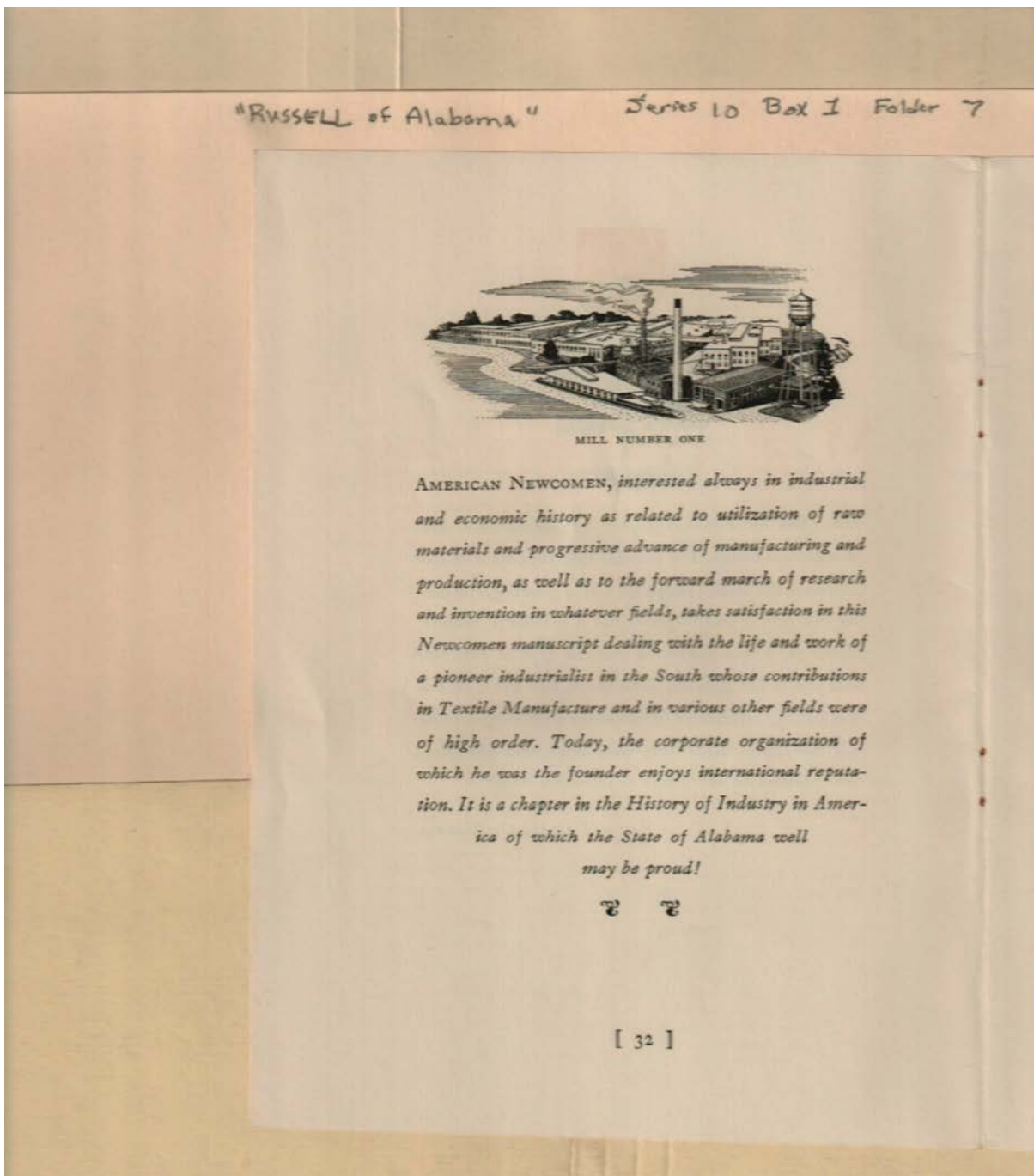
Types:

booklet

Frances Cabaniss Roberts Collection: Series 10, Box 1, Folder 7

Russell, Thomas D. "Russell of Alabama," 1960

Image 34 r10_01-07-000-0095 [Contents](#) [Index](#) [About](#)

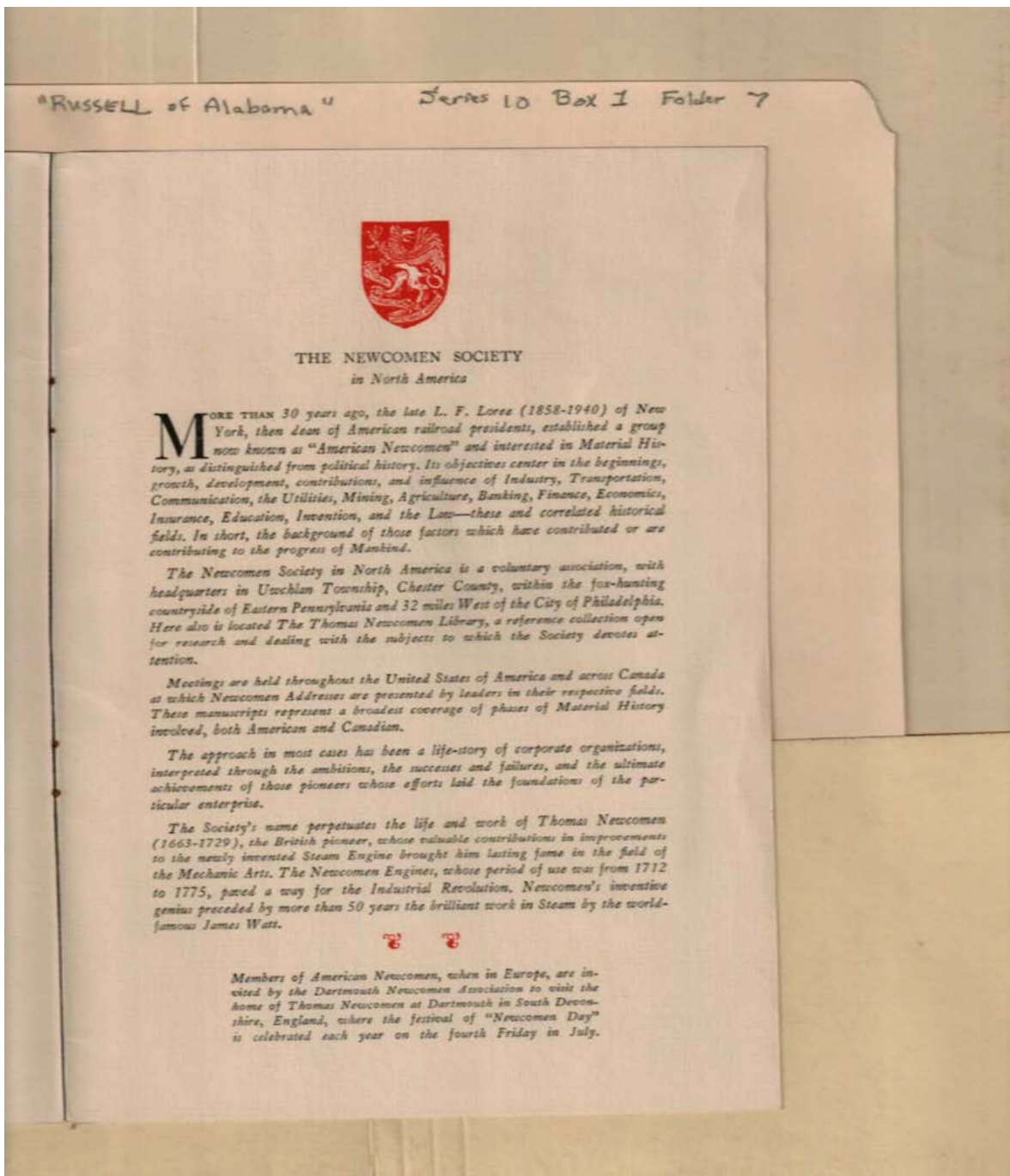


Names:

American Newcomen

Types:

booklet



Names:

Loree, L. F.

Newcomen, Thomas

The Newcomen

Society in North

America

Watt, James

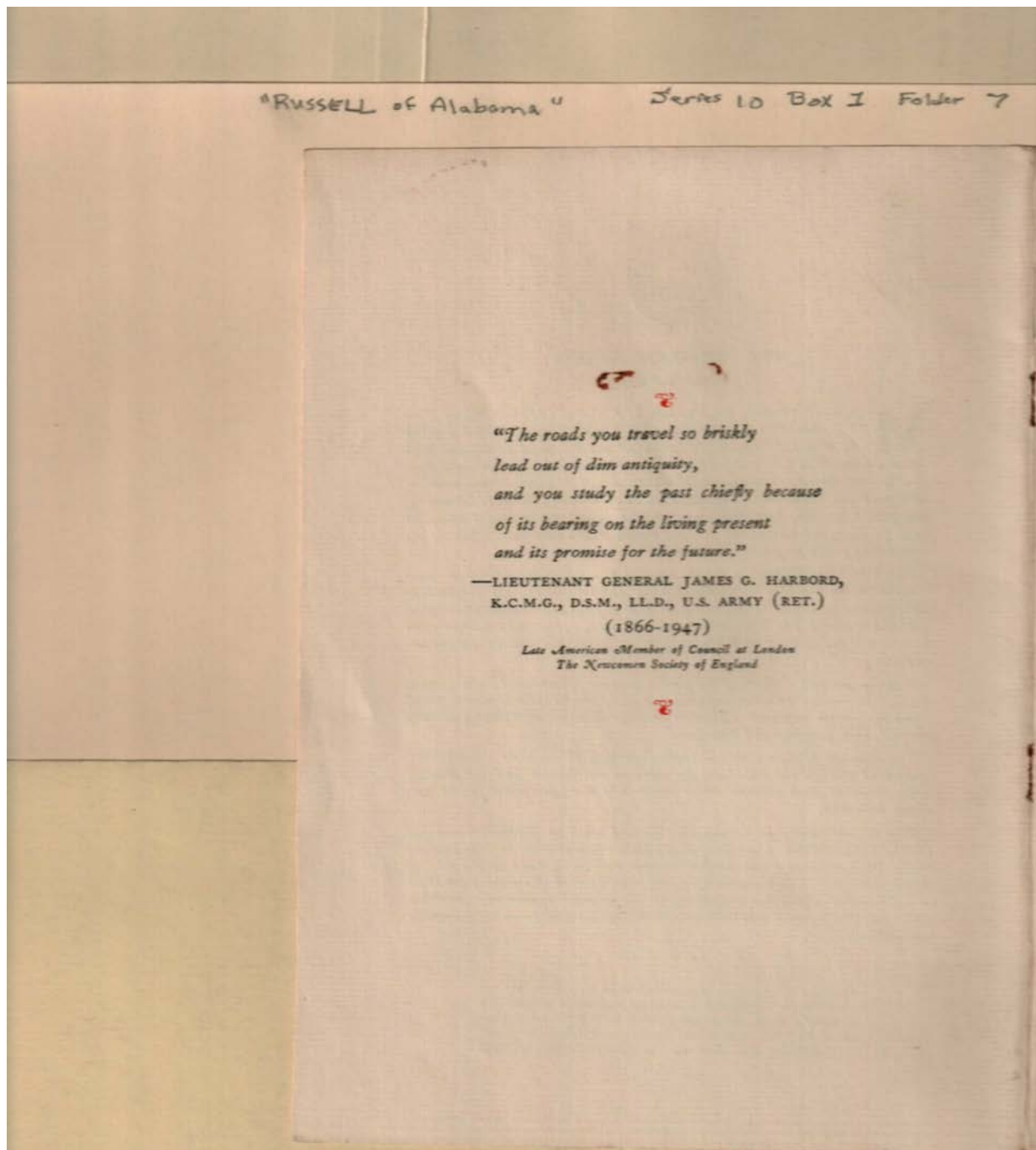
Types:

booklet

Frances Cabaniss Roberts Collection: Series 10, Box 1, Folder 7

Russell, Thomas D. "Russell of Alabama," 1960

Image 36 r10_01-07-000-0097 [Contents](#) [Index](#) [About](#)



Names:

Harbord, James G.,
General

Types:

booklet

Frances Cabaniss Roberts Collection: Series 10, Box 1, Folder 7

Russell, Thomas D. "Russell of Alabama," 1960

[Contents](#) [Index](#) [About](#)

Table of Contents

[Image 1](#) (r10_01-07-000-0060)

[Image 2](#) (r10_01-07-000-0061)

[Image 3](#) (r10_01-07-000-0062)

[Image 4](#) (r10_01-07-000-0063)

[Image 5](#) (r10_01-07-000-0064)

[Image 6](#) (r10_01-07-000-0065)

[Image 7](#) (r10_01-07-000-0066)

[Image 8](#) (r10_01-07-000-0067)

[Image 9](#) (r10_01-07-000-0068)

[Image 10](#) (r10_01-07-000-0069)

[Image 11](#) (r10_01-07-000-0070)

[Image 12](#) (r10_01-07-000-0071)

[Image 13](#) (r10_01-07-000-0072)

[Image 14](#) (r10_01-07-000-0073)

[Image 15](#) (r10_01-07-000-0076)

[Image 16](#) (r10_01-07-000-0077)

[Image 17](#) (r10_01-07-000-0078)

[Image 18](#) (r10_01-07-000-0079)

[Image 19](#) (r10_01-07-000-0080)

[Image 20](#) (r10_01-07-000-0081)

[Image 21](#) (r10_01-07-000-0082)

[Image 22](#) (r10_01-07-000-0083)

[Image 23](#) (r10_01-07-000-0084)

[Image 24](#) (r10_01-07-000-0085)

[Image 25](#) (r10_01-07-000-0086)

[Image 26](#) (r10_01-07-000-0087)

[Image 27](#) (r10_01-07-000-0088)

[Image 28](#) (r10_01-07-000-0089)

[Image 29](#) (r10_01-07-000-0090)

[Image 30](#) (r10_01-07-000-0091)

[Image 31](#) (r10_01-07-000-0092)

[Image 32](#) (r10_01-07-000-0093)

[Image 33](#) (r10_01-07-000-0094)

[Image 34](#) (r10_01-07-000-0095)

[Image 35](#) (r10_01-07-000-0096)

[Image 36](#) (r10_01-07-000-0097)

[Table of Contents](#)

[Name & Place Index](#)

[About the Collection](#)

Frances Cabaniss Roberts Collection: Series 10, Box 1, Folder 7

Russell, Thomas D. "Russell of Alabama," 1960

[Contents](#) [Index](#) [About](#)

Name & Place Index

Alexander City, AL [5](#)
Aliison, J. C., Mrs. [15](#)
Alison, J. C. [15](#)
American Newcomen [3](#), [34](#)
Bettie-Francis Mill [13](#)
Birmingham, AL [30](#)
Cleveland, Grover [10](#)
Elsabeth Mill [13](#)
Harbord, James G., General [36](#)
Loree, L. F. [35](#)
Marble City Mills [13](#)
Martin, Thomas W., Dr. [7](#), [30](#)
Martin, Thomas Wesley [12](#)
Martin, Thomas, Dr. [18](#), [19](#)
McDonald, Roberta [10](#)
Nelms, Jack N. [1](#)
Newcomem Address [30](#)
Newcomen, Thomas [35](#)
Penrose, Charles [2](#)
Roberta Mill [13](#)
Russco Mill [13](#)
Russell of Alabama [1](#), [3](#), [5](#)
Russell, Benjamin C. [20](#), [21](#)
Russell, Benjamin Commander [20](#)
Russell, Benjamin Francis Commander [9](#)
Russell, Benjamin [4](#), [6](#), [7](#), [9](#), [25](#), [29](#), [30](#)
Russell, Ben [10](#), [11](#), [12](#), [13](#), [14](#), [15](#), [16](#), [17](#), [18](#), [19](#), [20](#),
[31](#), [32](#), [33](#)
Russell, Elisabeth [15](#)
Russell, Jesse [9](#)
Russell, Roberta McDonald [20](#)
Russell, Roberta [8](#)
Russell, Robert [14](#), [15](#), [20](#)
Russell, T. C. [10](#), [11](#), [31](#)
Russell, Thomas D. [1](#), [5](#), [6](#), [7](#), [8](#), [21](#), [31](#), [32](#), [33](#)
Russell, Thomas [8](#)
Russell, Tom [14](#), [15](#)
Synosky, Madam [10](#)
The Newcomen Society in North America [35](#)
The Russell Manufacturing Company [7](#)
Thomas, Sally [10](#)
Watt, James [35](#)

Frances Cabaniss Roberts Collection

Preferred Citation: Frances Cabaniss Roberts Collection, Archives and Special Collections, M. Louis Salmon Library, University of Alabama in Huntsville, Huntsville, AL.

Collection Scope and Content: The Collection of 114 Linear ft. includes a total of 156 Archival Boxes. The Frances Cabaniss Roberts collection covers the historical records of the Cabaniss Roberts family. This collection contains extensive correspondence records of the Cabaniss Roberts family circa 1830 to 1930.

Archives/Special Collections Access Restrictions: None

Conditions Governing Use: This material may be protected under U. S. Copyright Law (Title 17, U.S. Code) which governs the making of photocopies or reproductions of copyrighted materials. You may use the digitized material for private study, scholarship, or research. Though the University of Alabama in Huntsville Archives and Special Collections has physical ownership of the material in its collections, in some cases we may not own the copyright to the material. It is the patron's obligation to determine and satisfy copyright restrictions when publishing or otherwise distributing materials found in our collections.

Provenance: Gift of Johanna Shields on October 28, 2006.



THE UNIVERSITY OF
ALABAMA IN HUNTSVILLE

**The UAH Archives and Special Collections
M. Louis Salmon Library**