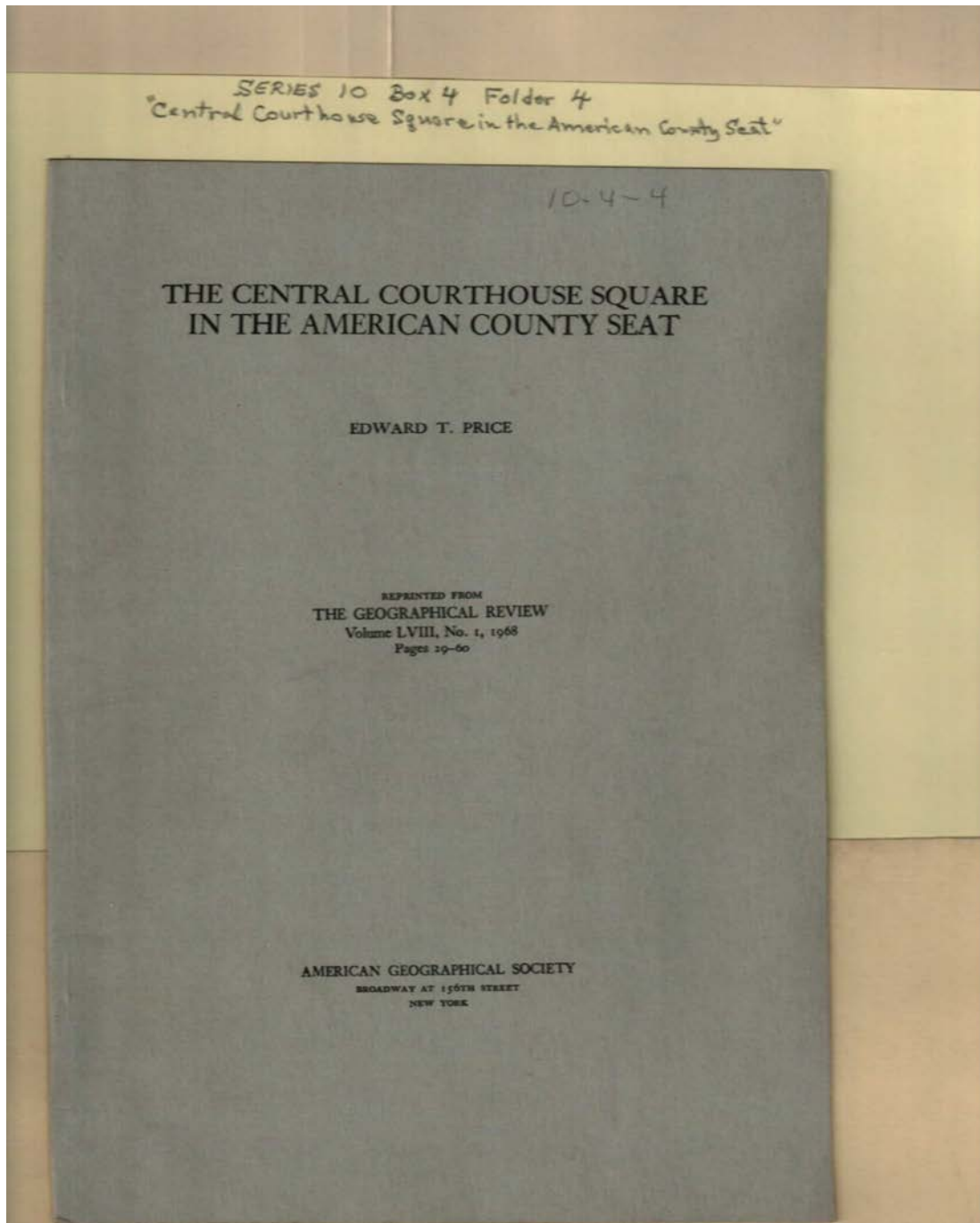


Frances Cabaniss Roberts Collection: Series 10, Box 4, Folder 4

Price, Edward T. "Central Courthouse Square in the American County Seat," reprinted post-1968

Image 1 r10\_04-04-000-0112 [Contents](#) [Index](#) [About](#)



**Names:**

American  
Geographical

Society  
Price, Edward T.

Central Courthouse  
Square in America

**Places:**

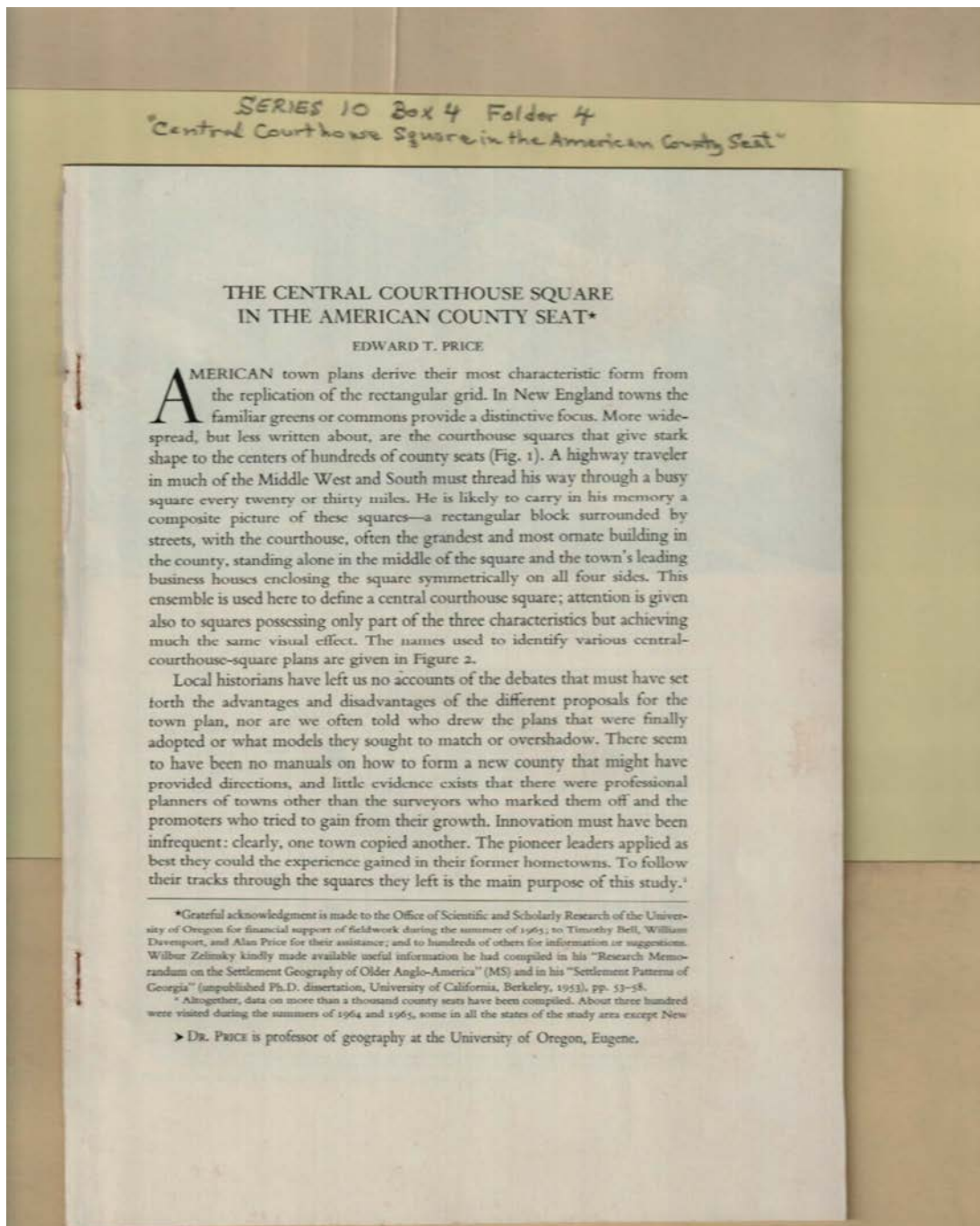
New York, NY

**Types:**

booklet

**Dates:**

1968



**Names:**

Bell, Timothy  
Davenport, William

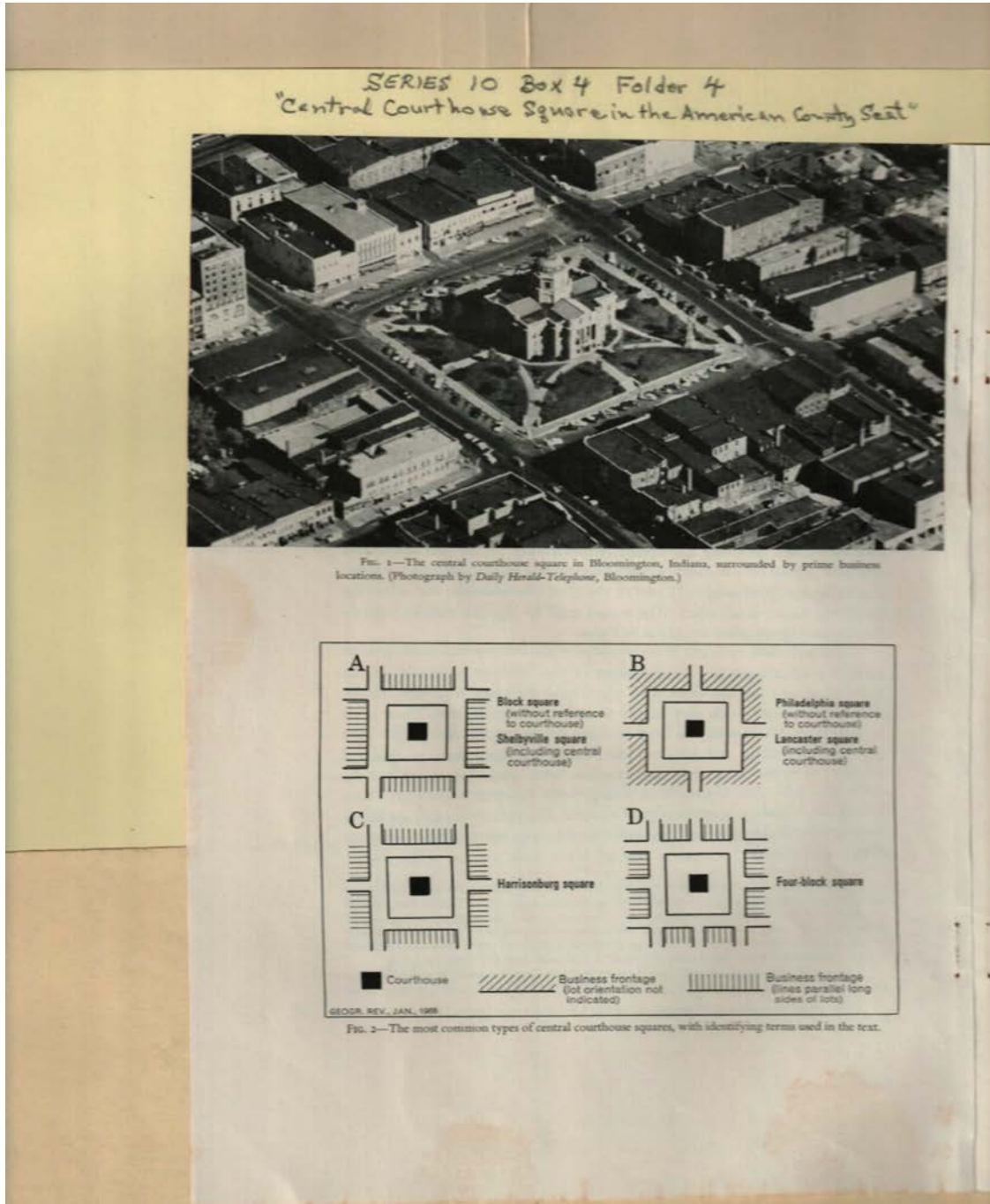
Price, Alan  
Price, Eugene, Dr.

Zelinsky, Wilbur

Central Courthouse  
Square in America

**Types:**

booklet



**Names:**

Common Types of  
Courthouse Squares

Courthouse Square

**Places:**

Bloomington, IN

**Types:**

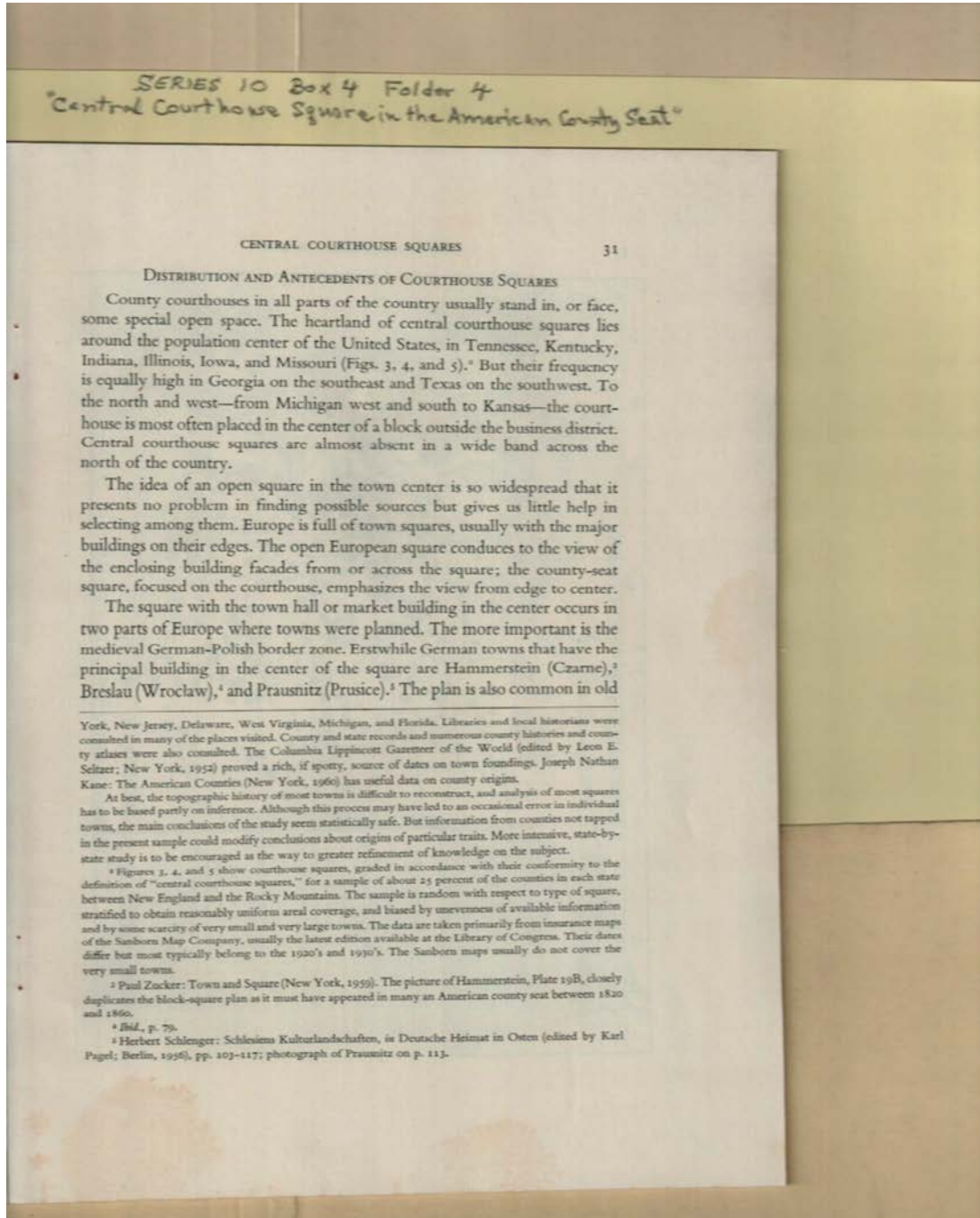
photo

sketch

Frances Cabaniss Roberts Collection: Series 10, Box 4, Folder 4

Price, Edward T. "Central Courthouse Square in the American County Seat," reprinted post-1968

Image 4 r10\_04-04-000-0115 [Contents](#) [Index](#) [About](#)



**Names:**

Kane, Joseph Nathan

Pagel, Karl

Schlenger, Herbert

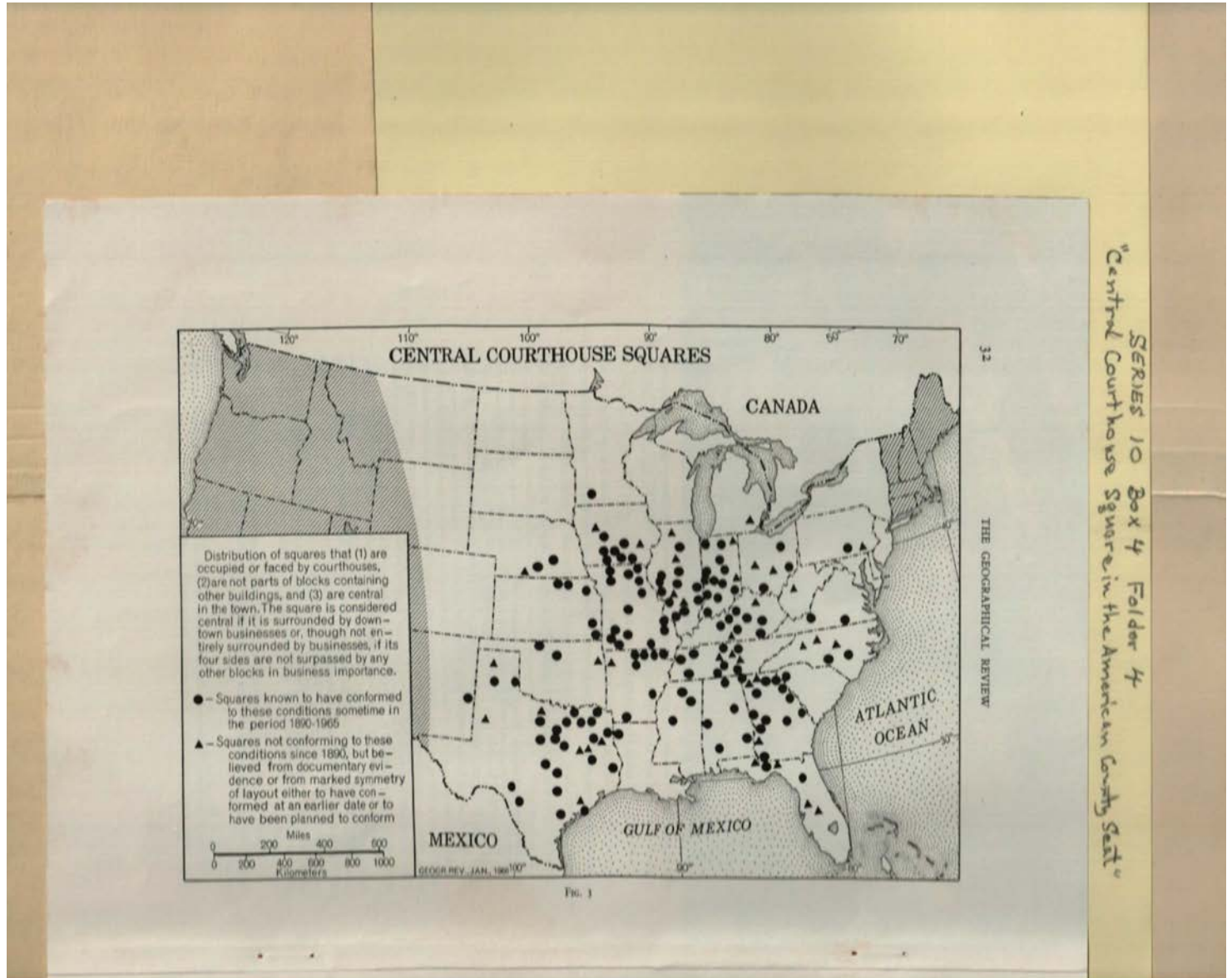
Seltzer, Leon E.

Zucker, Paul

**Types:**

booklet



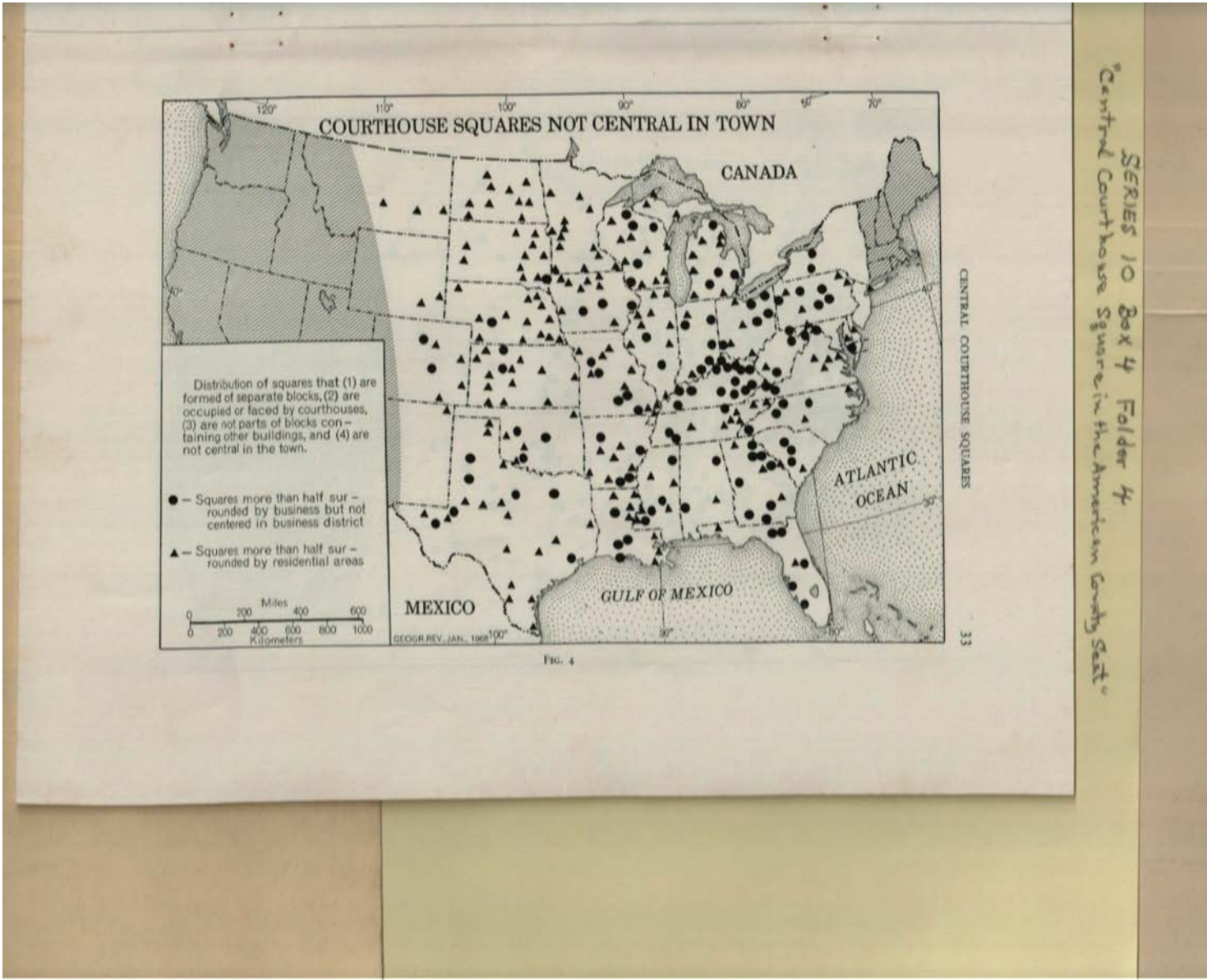


**Names:**

Central Courthouse  
Squares

**Types:**

map



**Names:**

Courthouse Squares  
Not Central in

Town

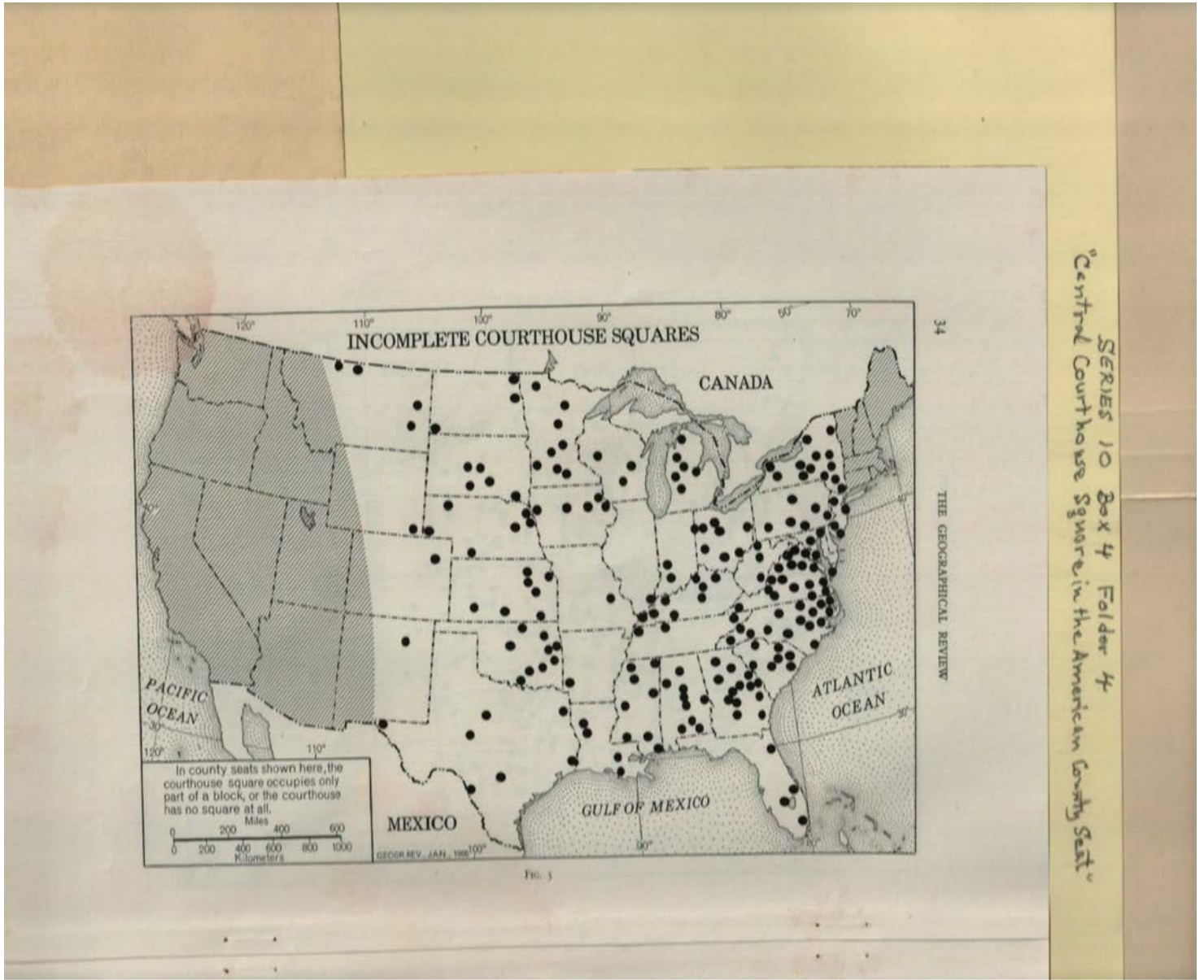
**Types:**

map

Frances Cabaniss Roberts Collection: Series 10, Box 4, Folder 4

Price, Edward T. "Central Courthouse Square in the American County Seat," reprinted post-1968

Image 7 r10\_04-04-000-0118 [Contents](#) [Index](#) [About](#)



**Names:**

- Courthouse Squares
- Incomplete

**Types:**

- map



Frances Cabaniss Roberts Collection: Series 10, Box 4, Folder 4

Price, Edward T. "Central Courthouse Square in the American County Seat," reprinted post-1968

Image 8 r10\_04-04-000-0119 [Contents](#) [Index](#) [About](#)



SERIES 10 Box 4 Folder 4  
"Central Courthouse Square in the American County Seat"

**Names:**

Philadelphia Square  
Counties

**Types:**

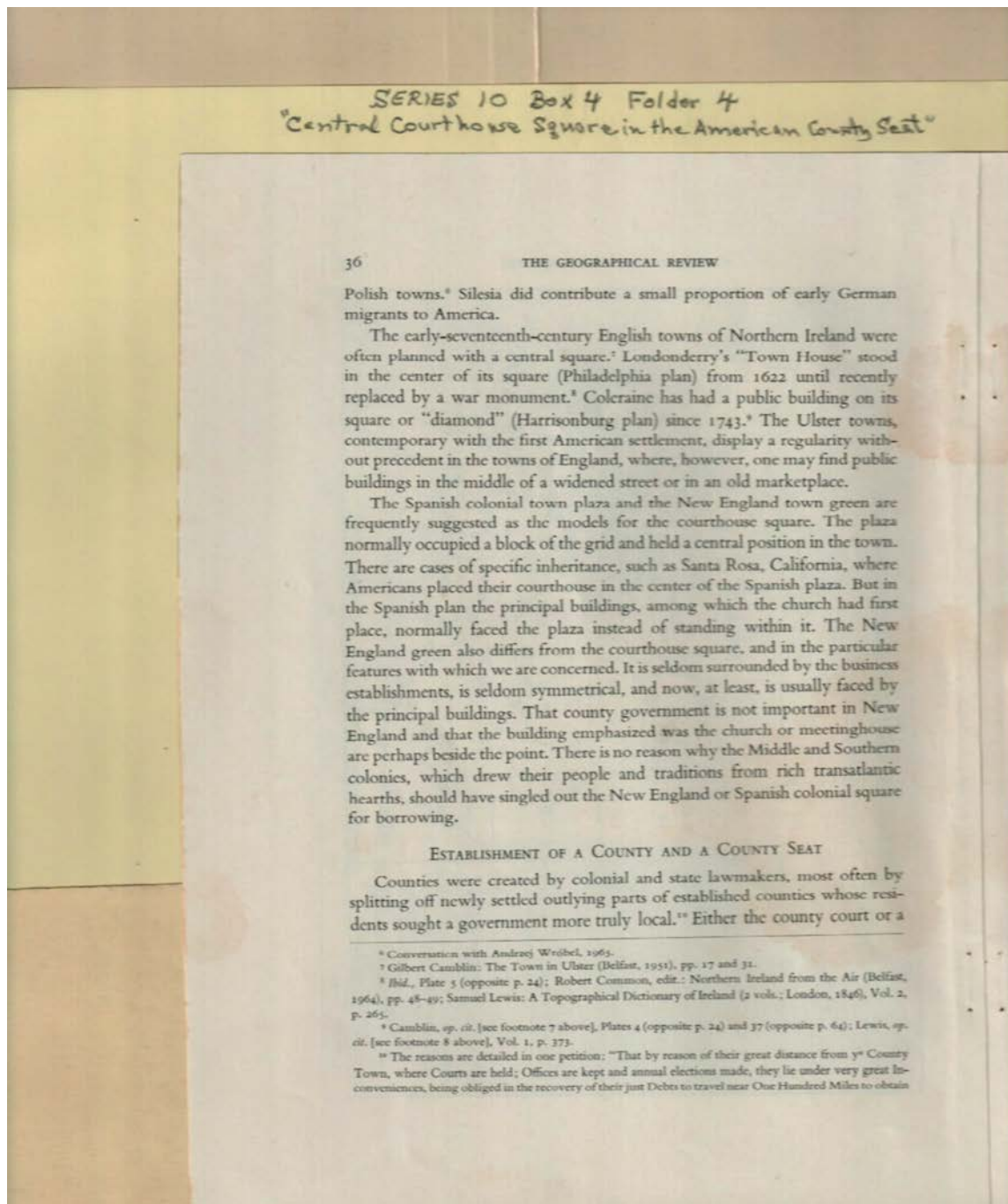
map



Frances Cabaniss Roberts Collection: Series 10, Box 4, Folder 4

Price, Edward T. "Central Courthouse Square in the American County Seat," reprinted post-1968

Image 9 r10\_04-04-000-0120 [Contents](#) [Index](#) [About](#)



**Names:**

Camblin, Gilbert

Common, Robert

Lewis, Samuel

Wróbel, Andrzej

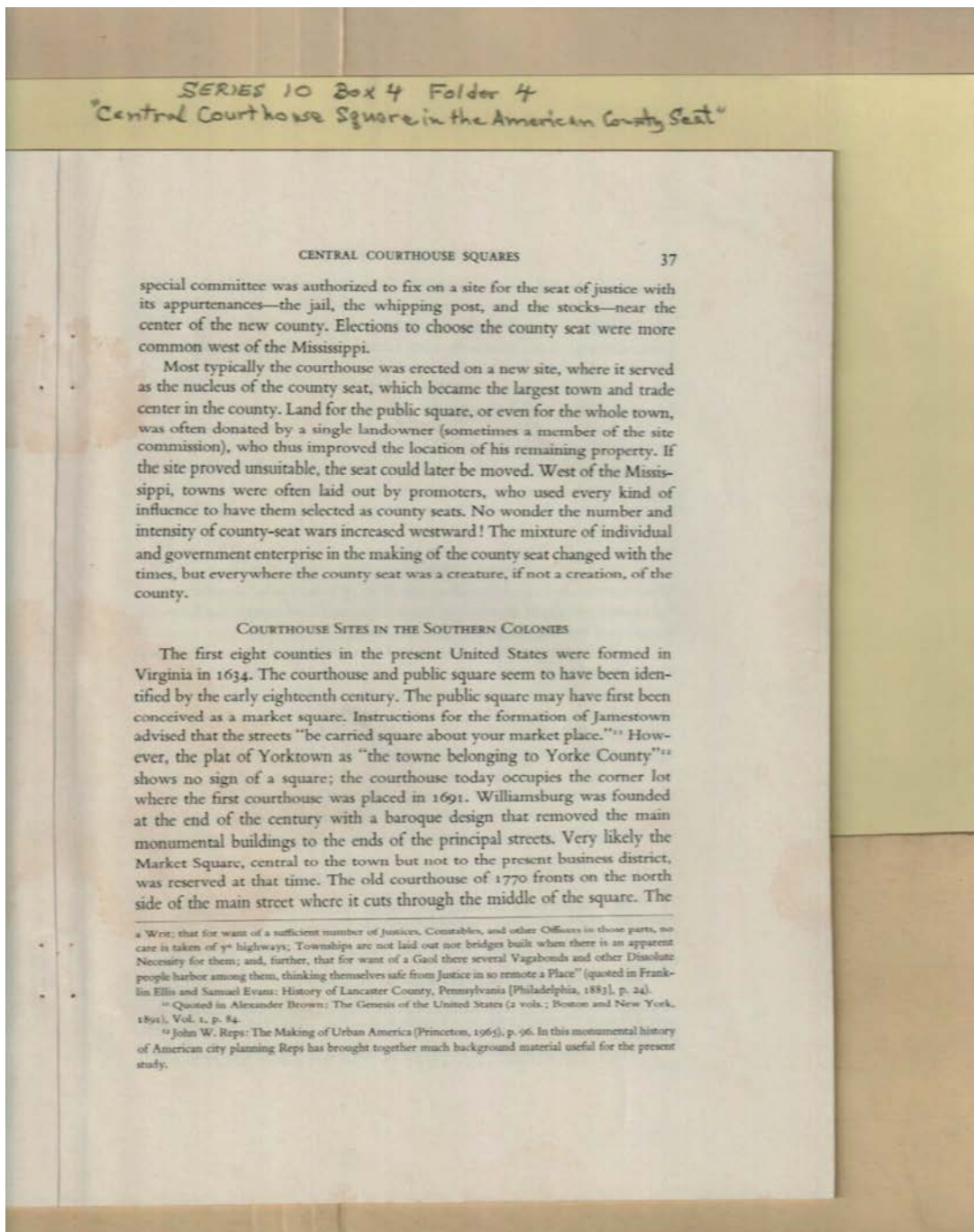
**Types:**

booklet

Frances Cabaniss Roberts Collection: Series 10, Box 4, Folder 4

Price, Edward T. "Central Courthouse Square in the American County Seat," reprinted post-1968

Image 10 r10\_04-04-000-0121 [Contents](#) [Index](#) [About](#)



**Names:**

Brown, Alexander

Ellis, Franklin

Evans, Samuel

Reps, John W.

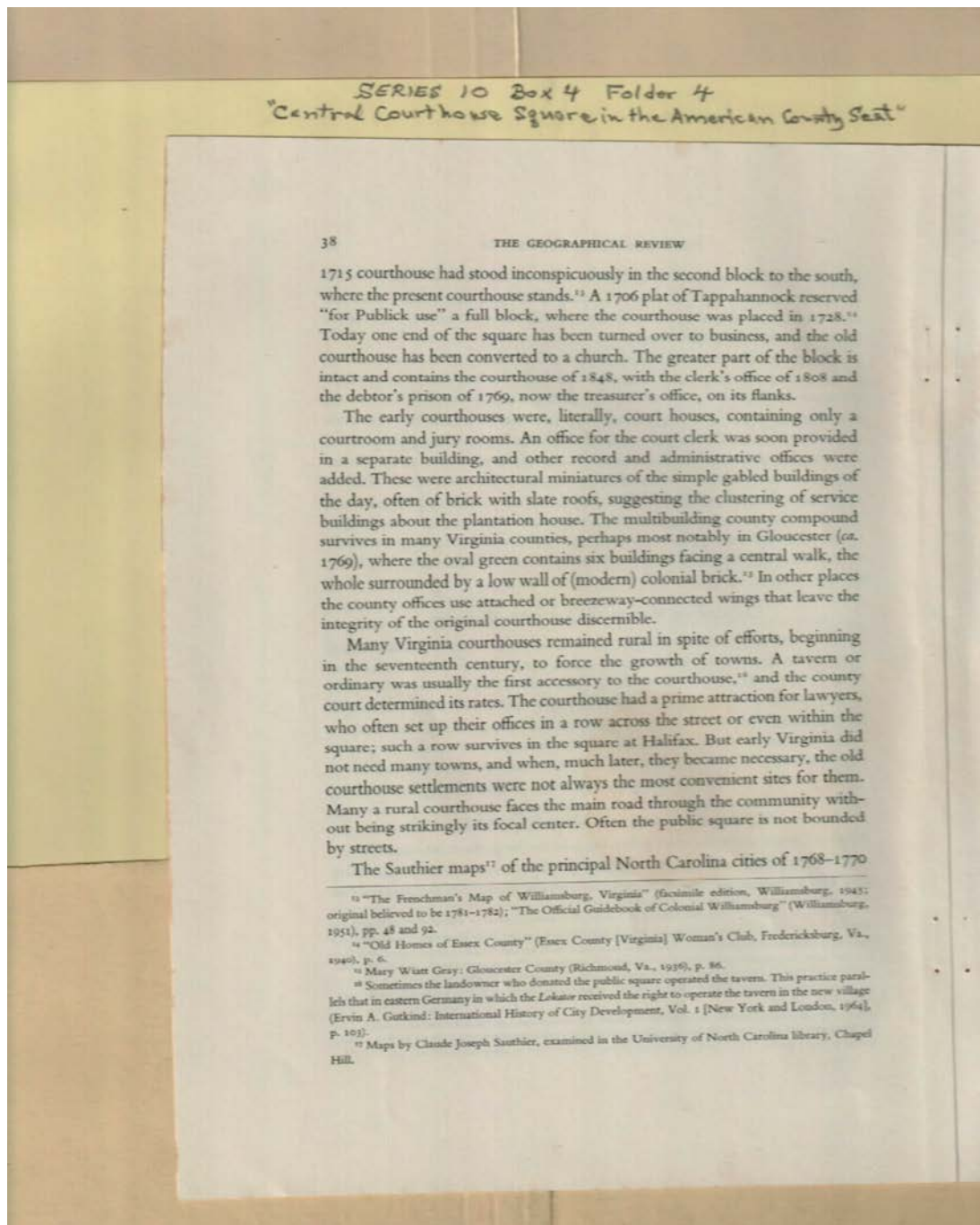
**Types:**

booklet

Frances Cabaniss Roberts Collection: Series 10, Box 4, Folder 4

Price, Edward T. "Central Courthouse Square in the American County Seat," reprinted post-1968

Image 11 r10\_04-04-000-0122 [Contents](#) [Index](#) [About](#)



**Names:**

Gray, Mary Wiatt  
Gutkind, Ervin A.

Sauthier, Claude  
Joseph

**Types:**

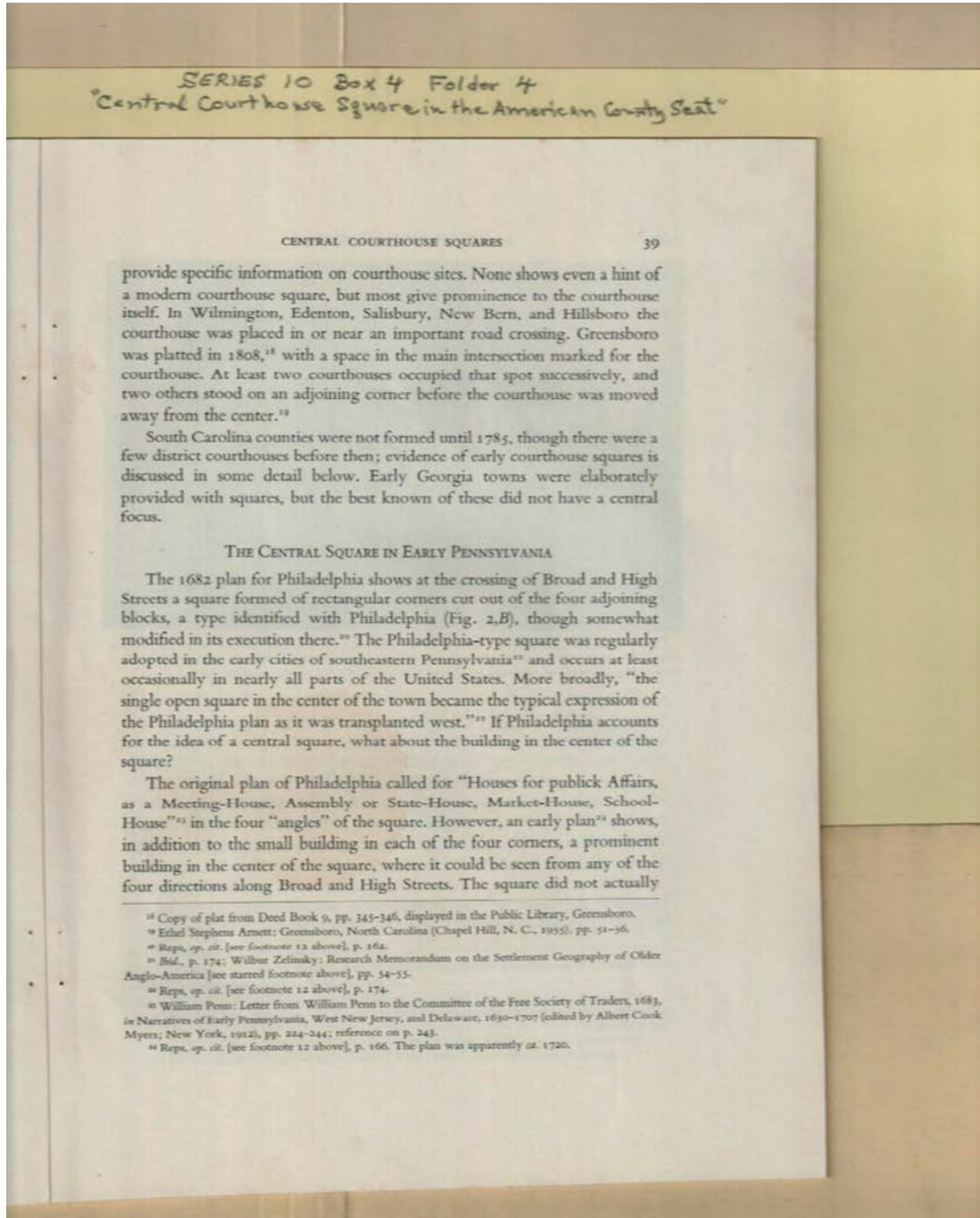
booklet



Frances Cabaniss Roberts Collection: Series 10, Box 4, Folder 4

Price, Edward T. "Central Courthouse Square in the American County Seat," reprinted post-1968

Image 12 r10\_04-04-000-0123 [Contents](#) [Index](#) [About](#)



**Names:**

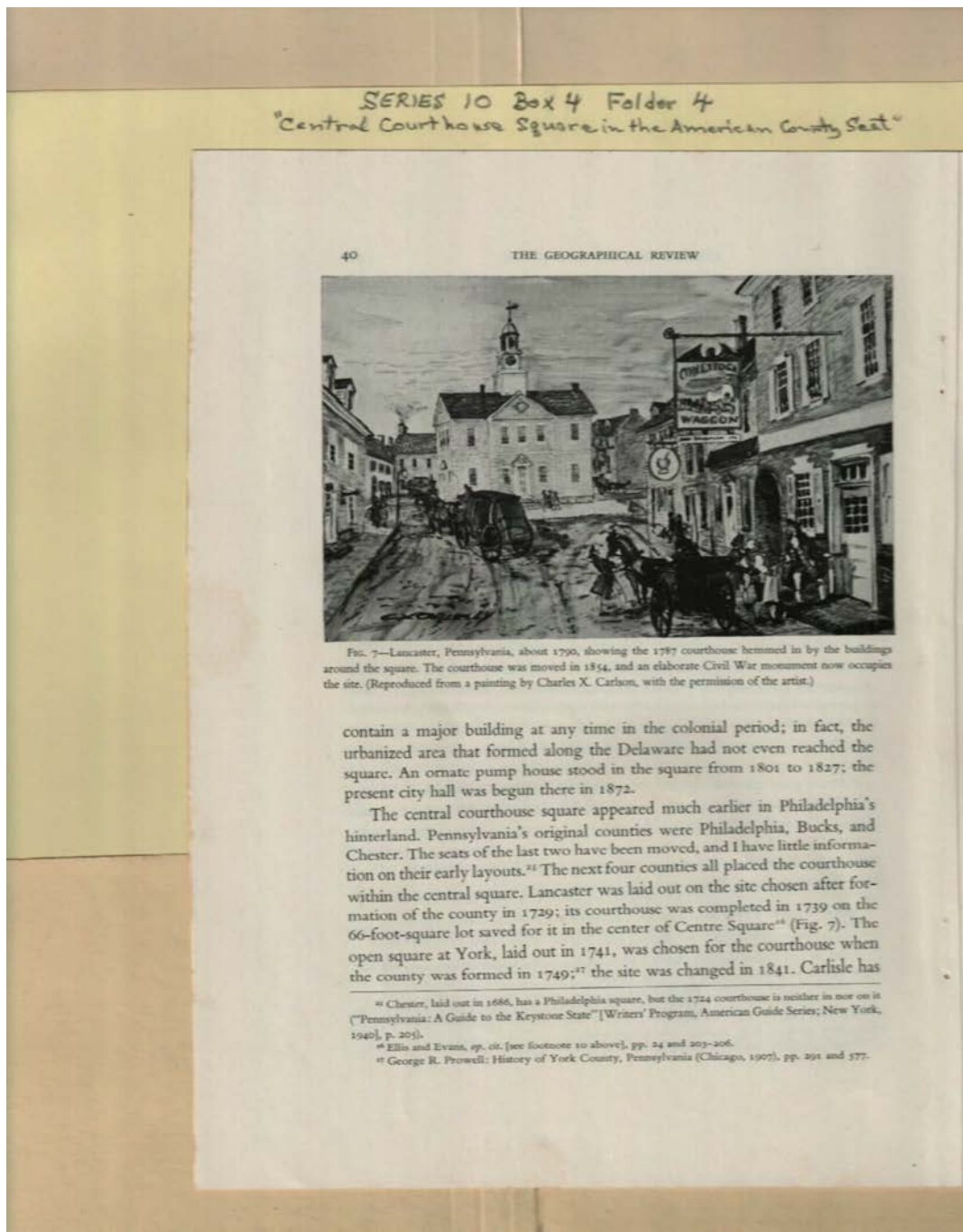
Arnett, Ethel  
Stephens

Myers, Albert Cook  
Penn, William

Zelinsky, Wilbur

**Types:**

booklet



**Names:**

Carlson, Charles X.

Ellis,

Evans,

Prowell, George R.

**Types:**

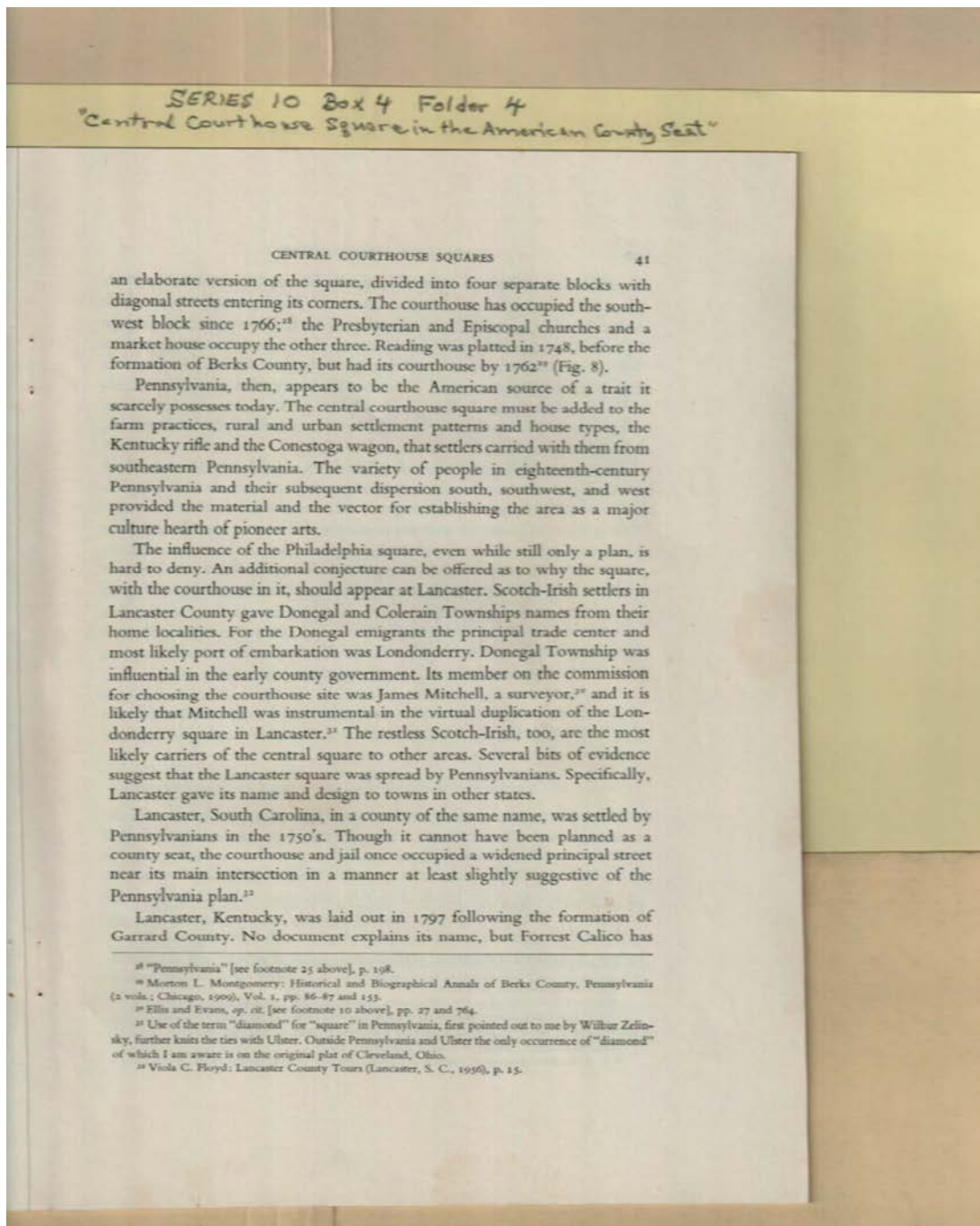
booklet

painting

Frances Cabaniss Roberts Collection: Series 10, Box 4, Folder 4

Price, Edward T. "Central Courthouse Square in the American County Seat," reprinted post-1968

Image 14 r10\_04-04-000-0125 [Contents](#) [Index](#) [About](#)



**Names:**

Calico, Forrest  
Ellis,  
Evans,

Floyd, Viola C.  
Mitchell, James

Montgomery, Morton  
L.  
Zelinsky, Wilbur

**Types:**

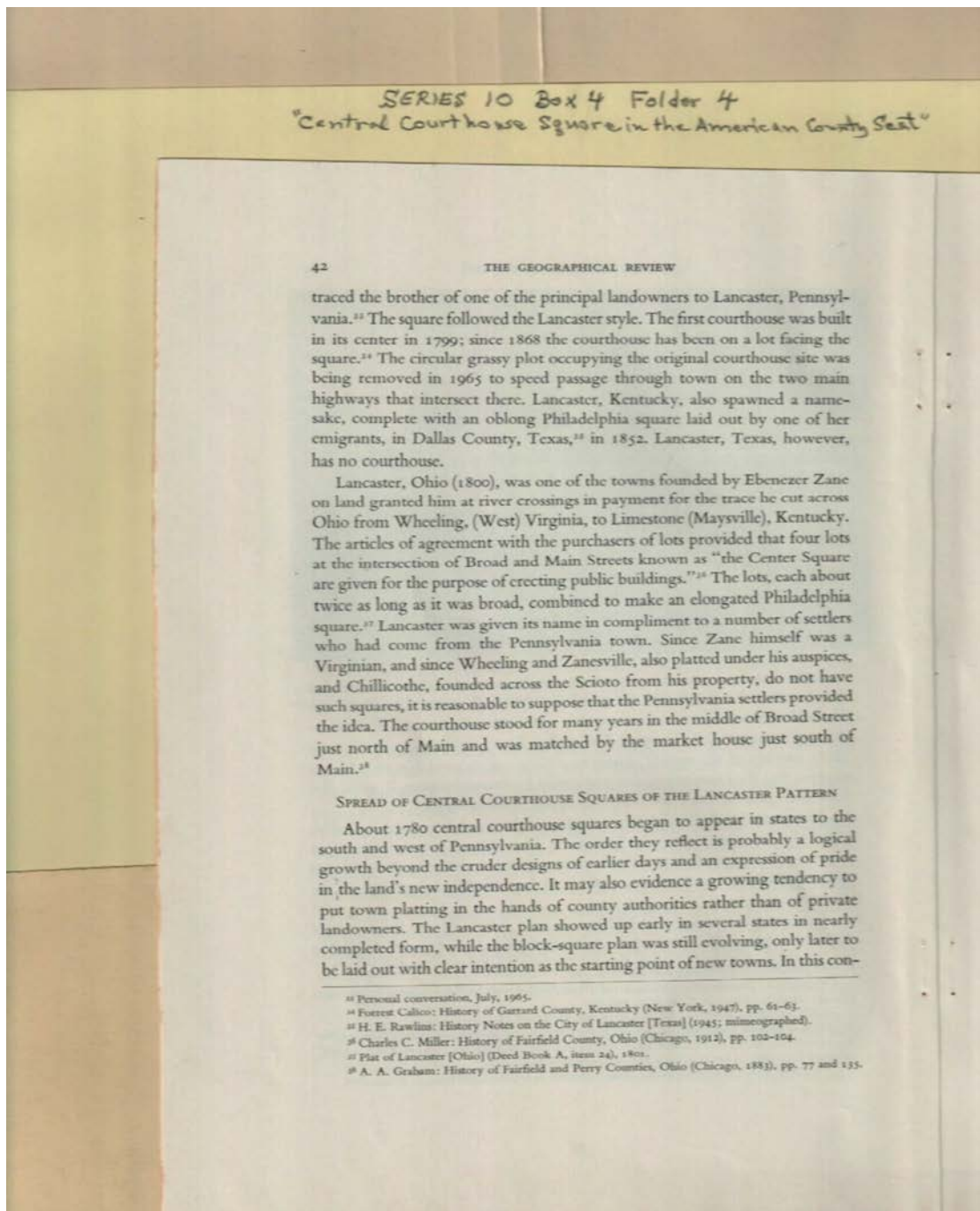
booklet



Frances Cabaniss Roberts Collection: Series 10, Box 4, Folder 4

Price, Edward T. "Central Courthouse Square in the American County Seat," reprinted post-1968

Image 15 r10\_04-04-000-0126 [Contents](#) [Index](#) [About](#)



**Names:**

Graham, A. A.

Miller, Charles C.

Rawlins, H. E.

Zane, Ebenezer

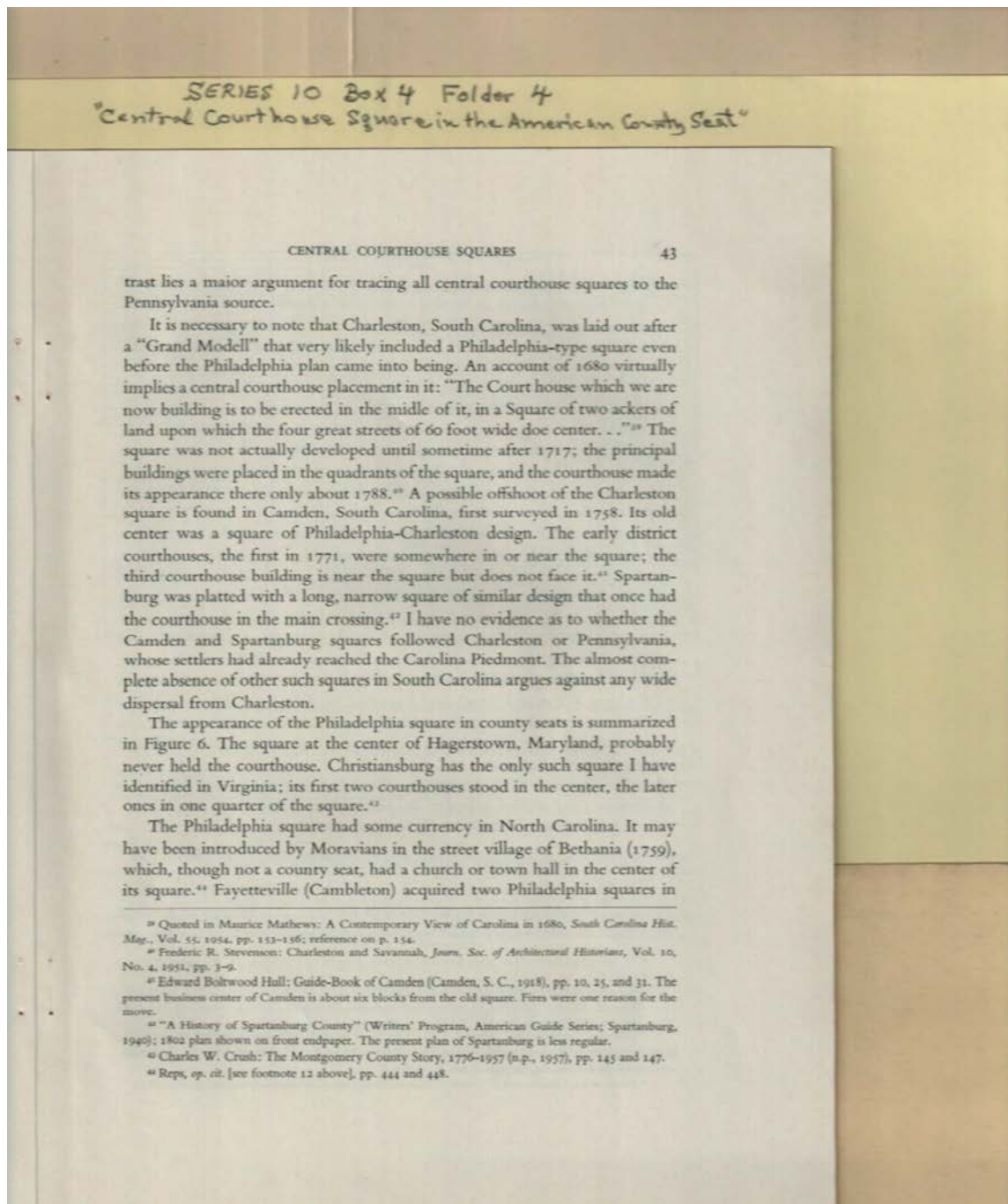
**Types:**

booklet

Frances Cabaniss Roberts Collection: Series 10, Box 4, Folder 4

Price, Edward T. "Central Courthouse Square in the American County Seat," reprinted post-1968

Image 16 r10\_04-04-000-0127 [Contents](#) [Index](#) [About](#)



**Names:**

Crush, Charles W.

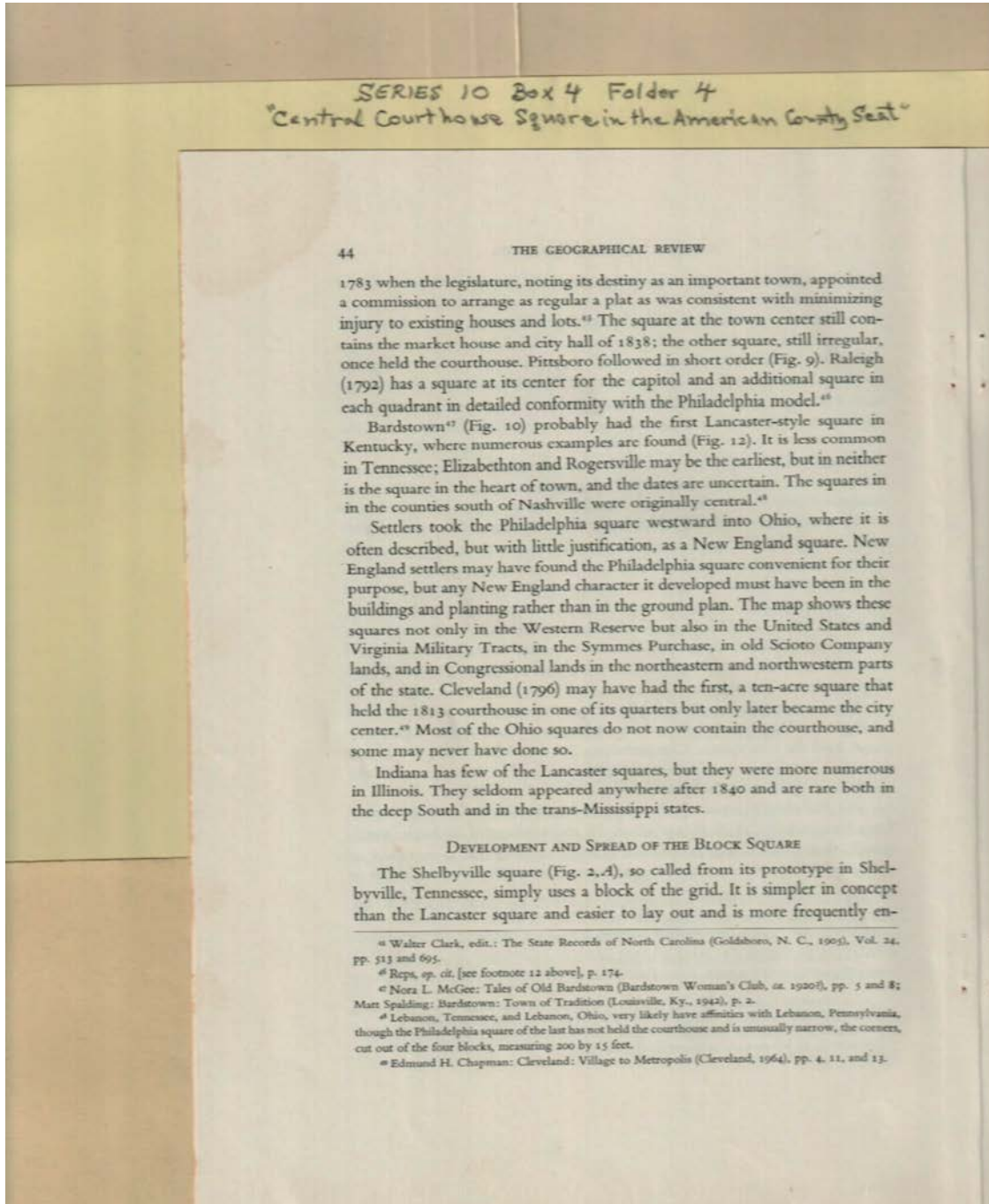
Hull, Edward  
Boltwood

Mathews, Maurice

Stevenson, Frederic  
R.

**Types:**

booklet



**Names:**

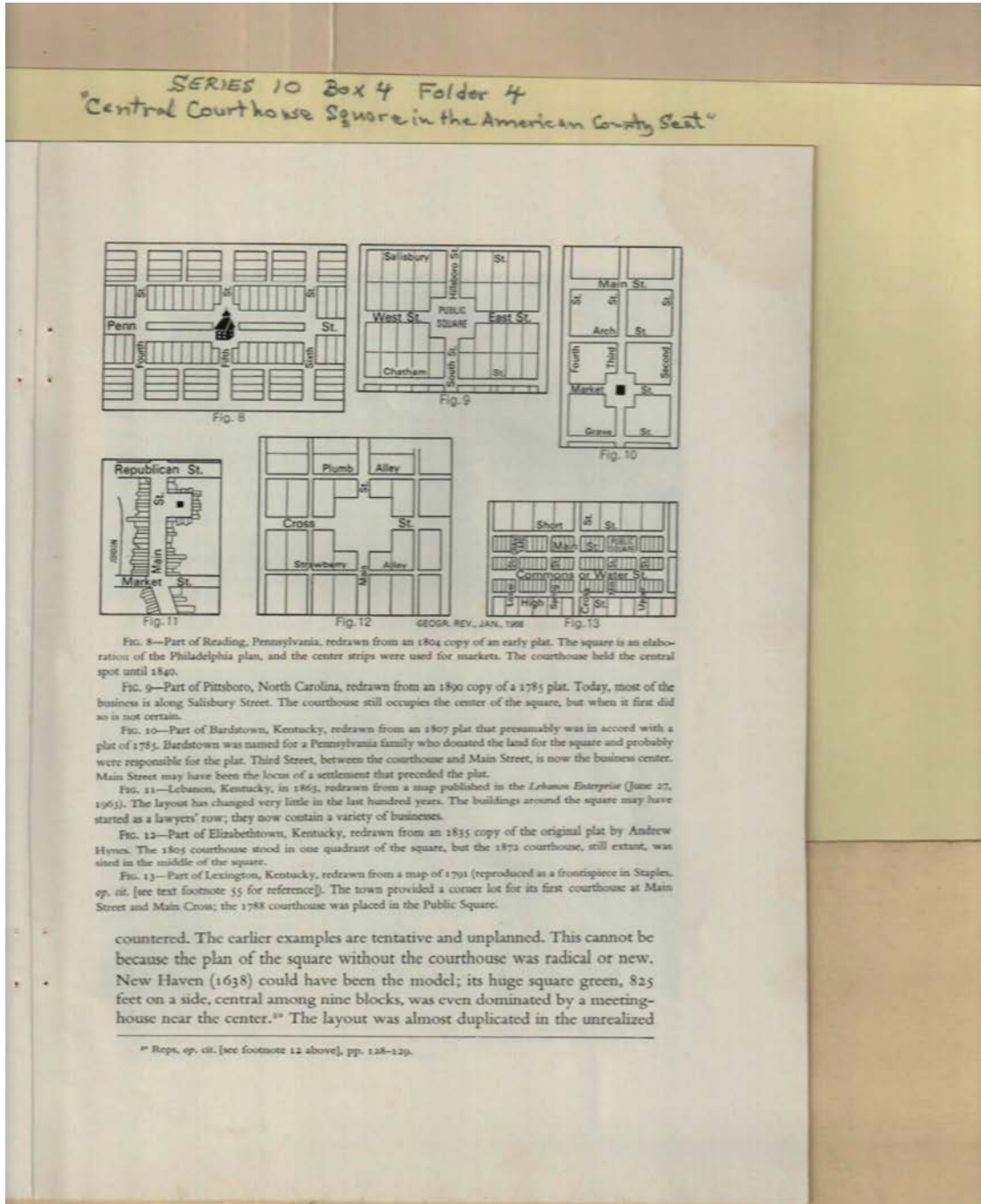
Chapman, Edmund  
H.

Clark, Walter  
McGee, Nora L.

**Types:**

booklet





**Names:**

Hynes, Andrew

Public Square Plans

**Types:**

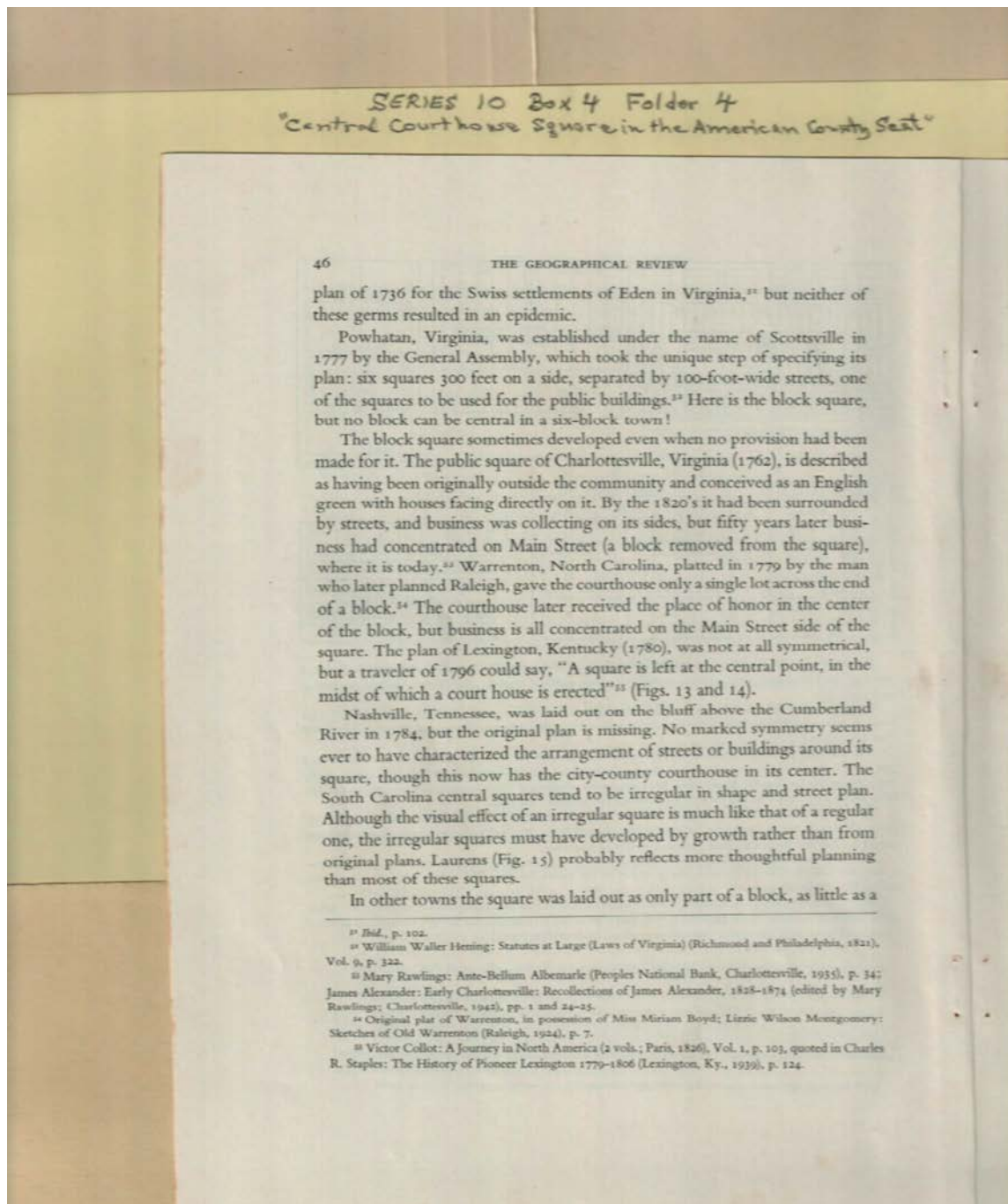
booklet

sketch

Frances Cabaniss Roberts Collection: Series 10, Box 4, Folder 4

Price, Edward T. "Central Courthouse Square in the American County Seat," reprinted post-1968

Image 19 r10\_04-04-000-0130 [Contents](#) [Index](#) [About](#)



**Names:**

Alexander, James  
Boyd, Miriam, Miss  
Collot, Victor

Henning, William  
Waller

Montgomery, Lizzie  
Wilson  
Rawlings, Mary

Staples, Charles R.

**Types:**

booklet

SERIES 10 Box 4 Folder 4  
"Central Courthouse Square in the American County Seat"

CENTRAL COURTHOUSE SQUARES

47



FIG. 14—Lexington, Kentucky. The open space is only part of the original Public Square. The wooded strip at the left was formerly the market place. The buildings to the right and left of the square do not face the courthouse, but follow the orientation of the original lots. (Photograph by Lexington Herald-Leader.)



FIG. 15—Laurens, South Carolina. According to a local historian (M. H. Wilkes: History of Laurens County [Laurens, n.d.]), the county purchased four acres for the square in 1792. In 1800 a landowner laid off lots on three sides; those above and below faced the square, that on the right was all one lot. The central part of the courthouse dates from 1838. (Photograph by Ken Eargle, Laurens.)

**Names:**

Eargle, Ken

Public Square

Wilkes, M. H.

**Places:**

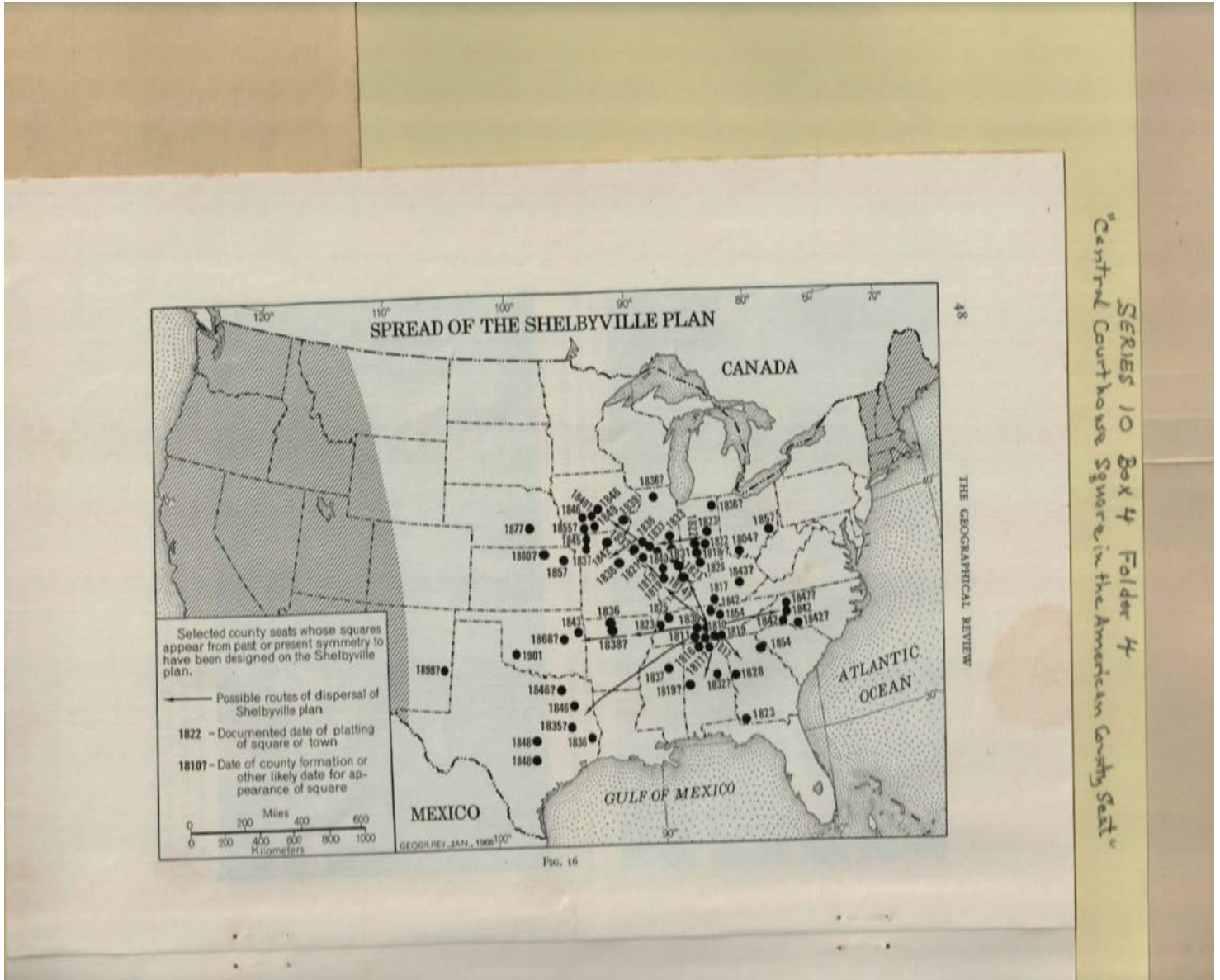
Laurens, SC

Lexington, KY

**Types:**

photograph



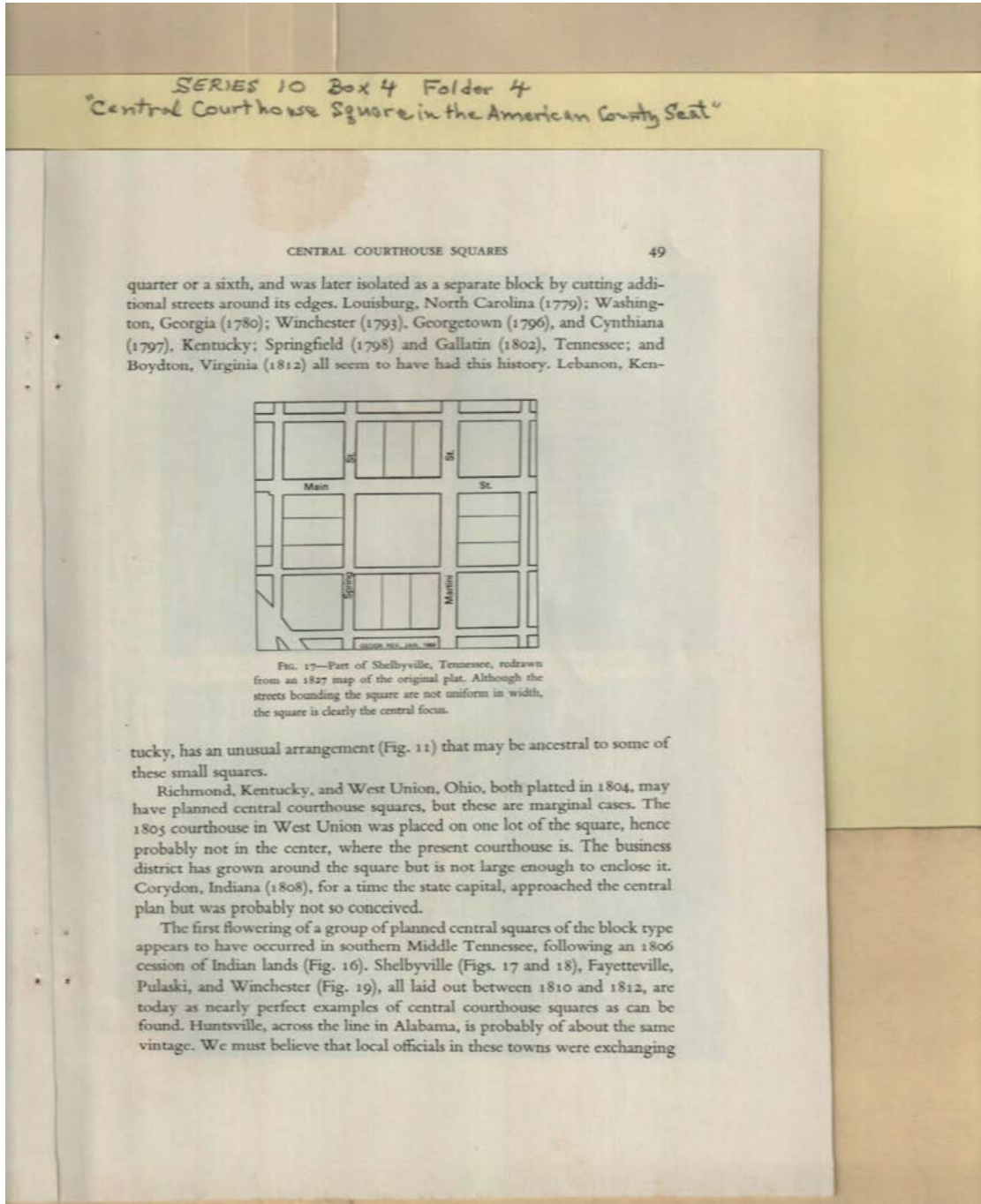


**Names:**

Spread of Shelbyville  
Square Plan

**Types:**

map



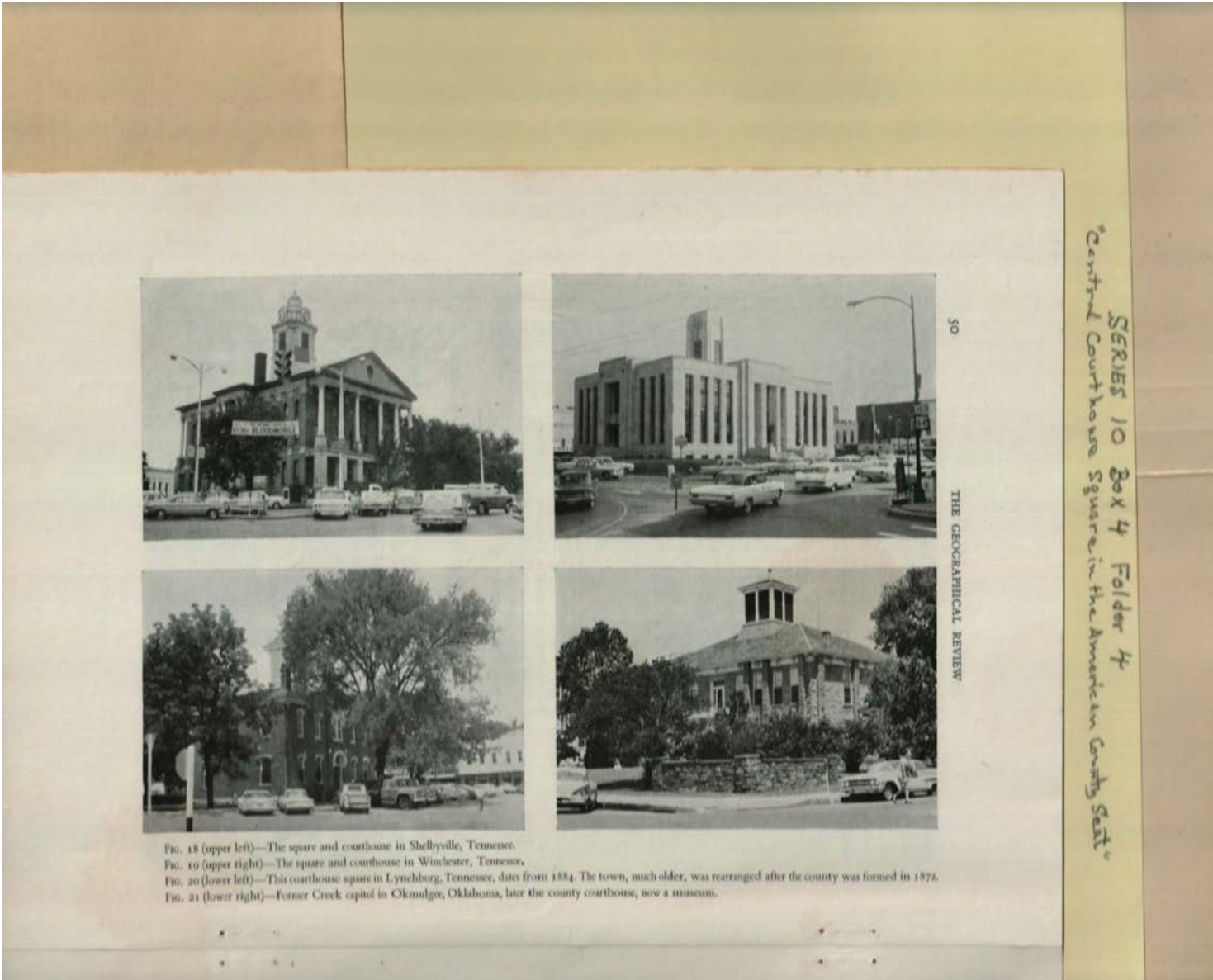
**Names:**

Shelbyville Square

Plan

**Types:**

sketch



**Names:**

Public Square

**Places:**

Lynchburg, TN

Okmulgee, OK

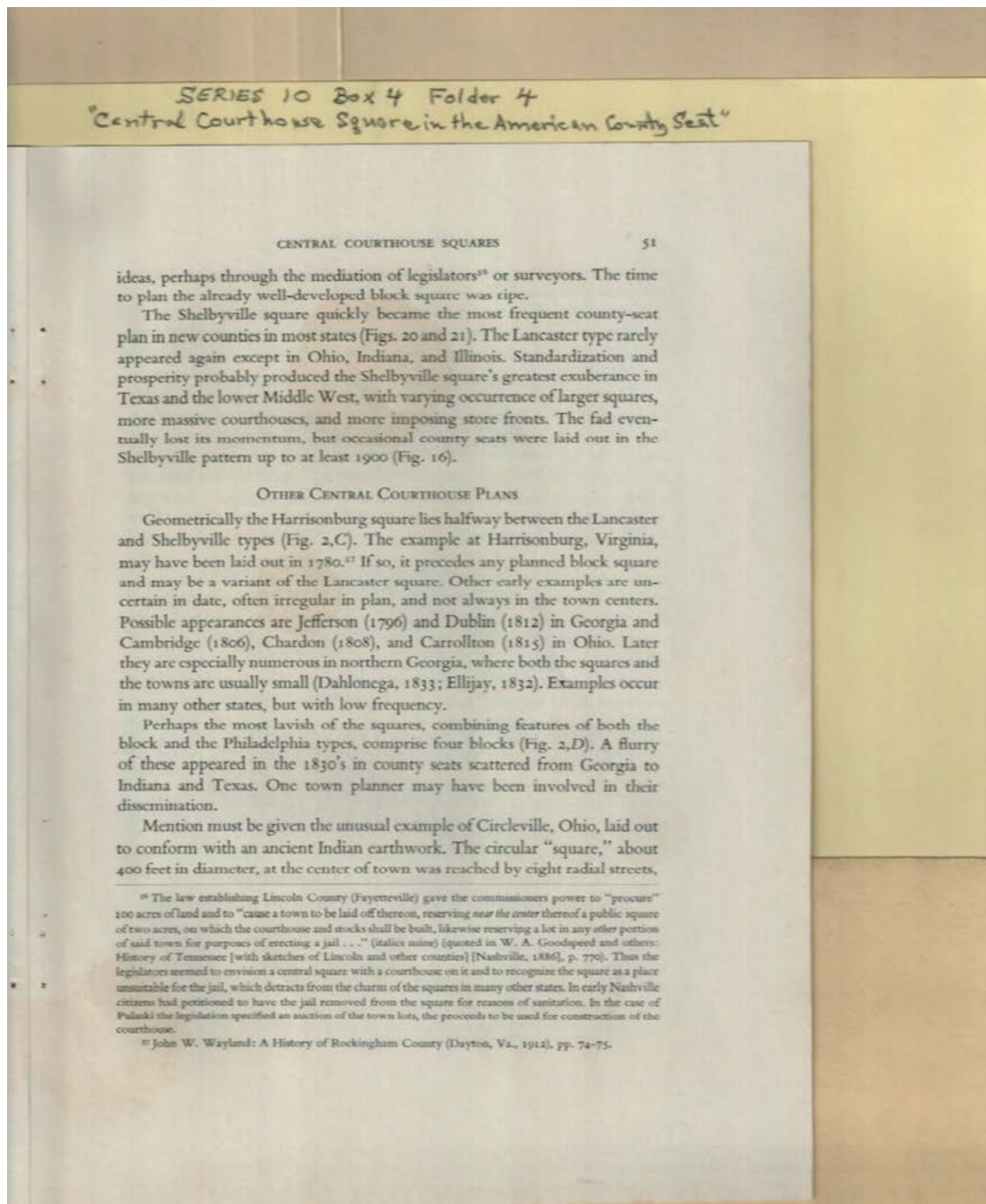
Shelbyville, TN

Winchester, TN

**Types:**

photograph





**Names:**

Goodspeed, W. A.

Wayland, John W.

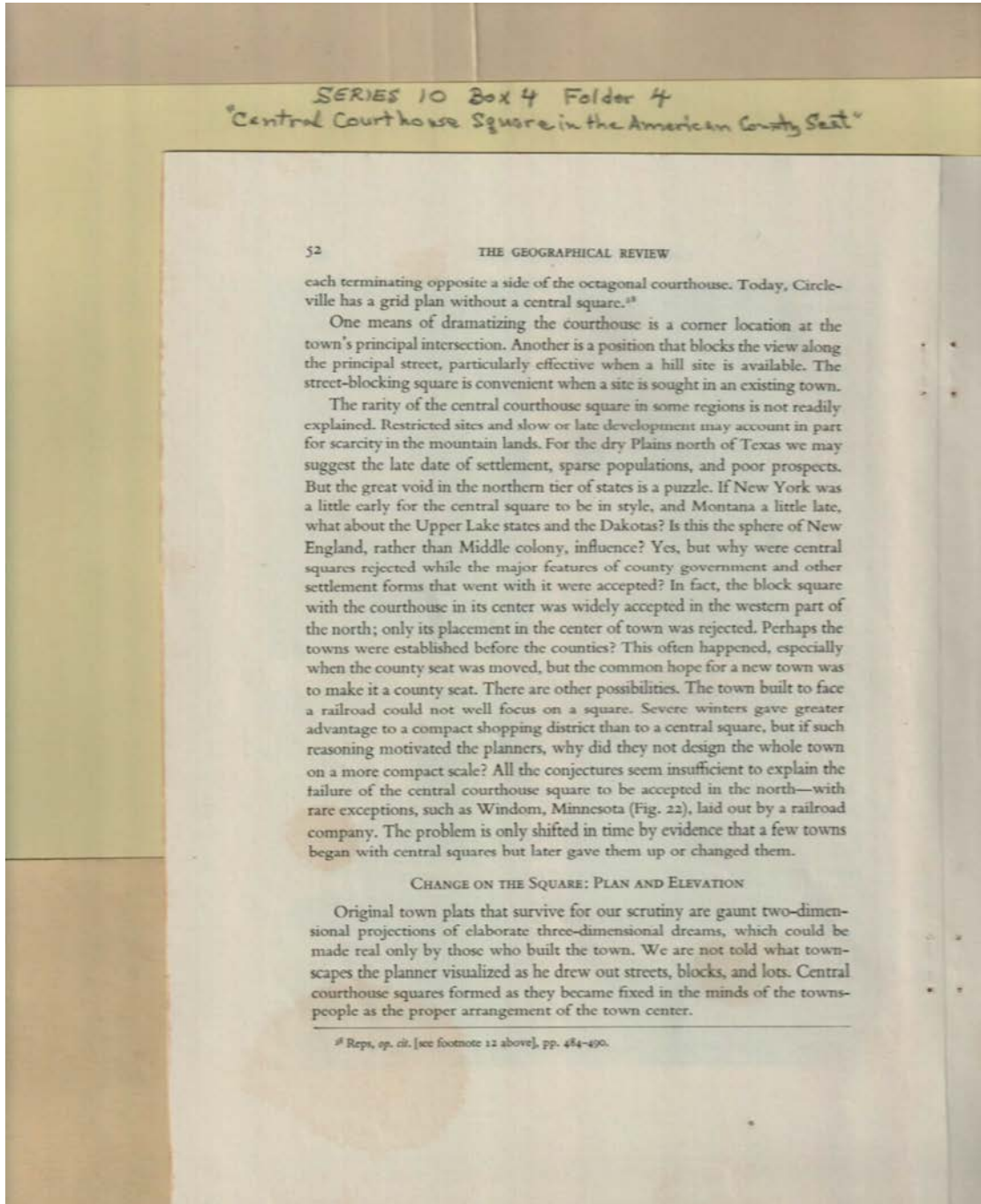
**Types:**

booklet

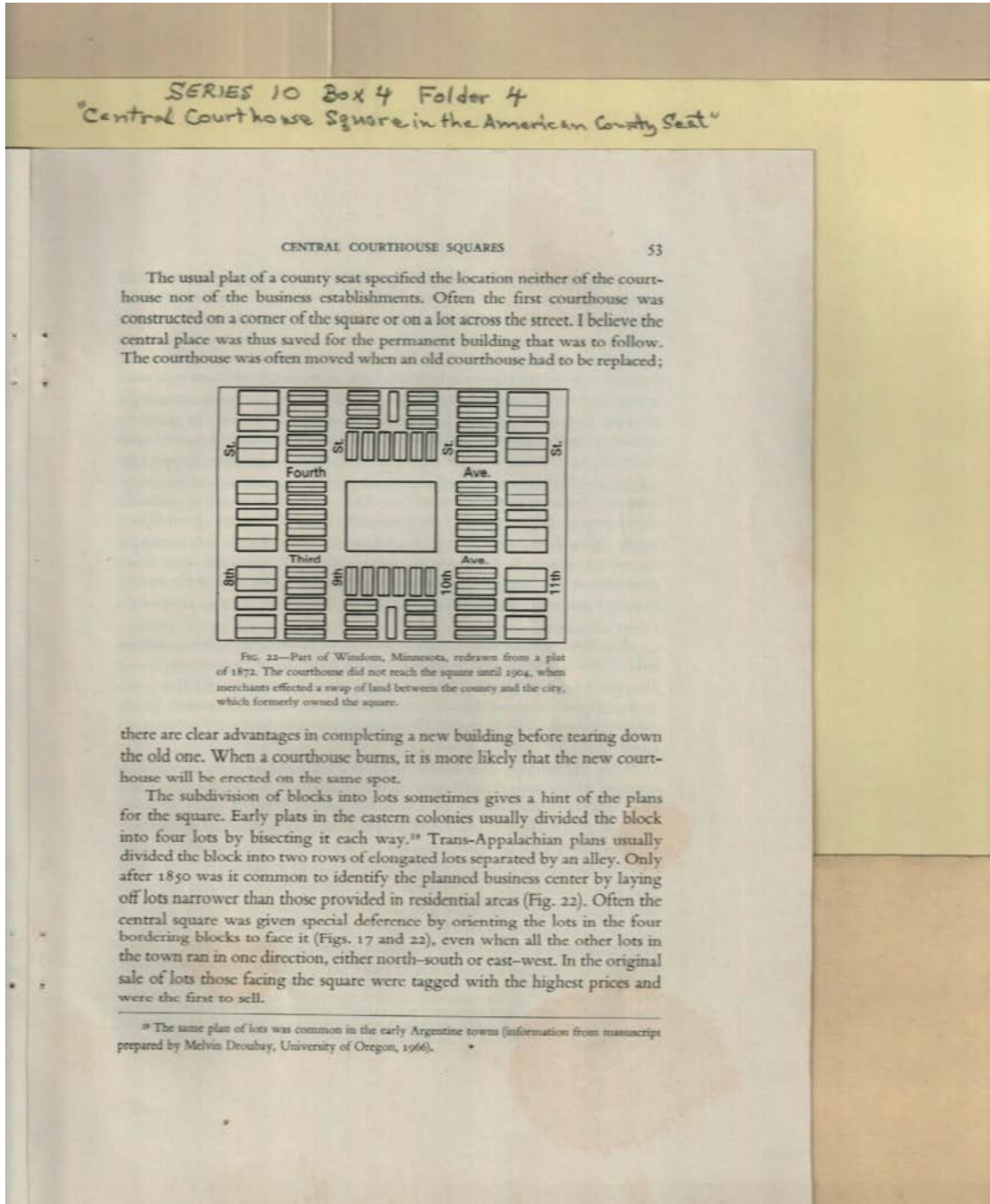
Frances Cabaniss Roberts Collection: Series 10, Box 4, Folder 4

Price, Edward T. "Central Courthouse Square in the American County Seat," reprinted post-1968

Image 25 r10\_04-04-000-0136 [Contents](#) [Index](#) [About](#)



Types:  
booklet



**Names:**

Droubay, Melvin

Public Square Plan

**Places:**

Windom, MN

**Types:**

booklet

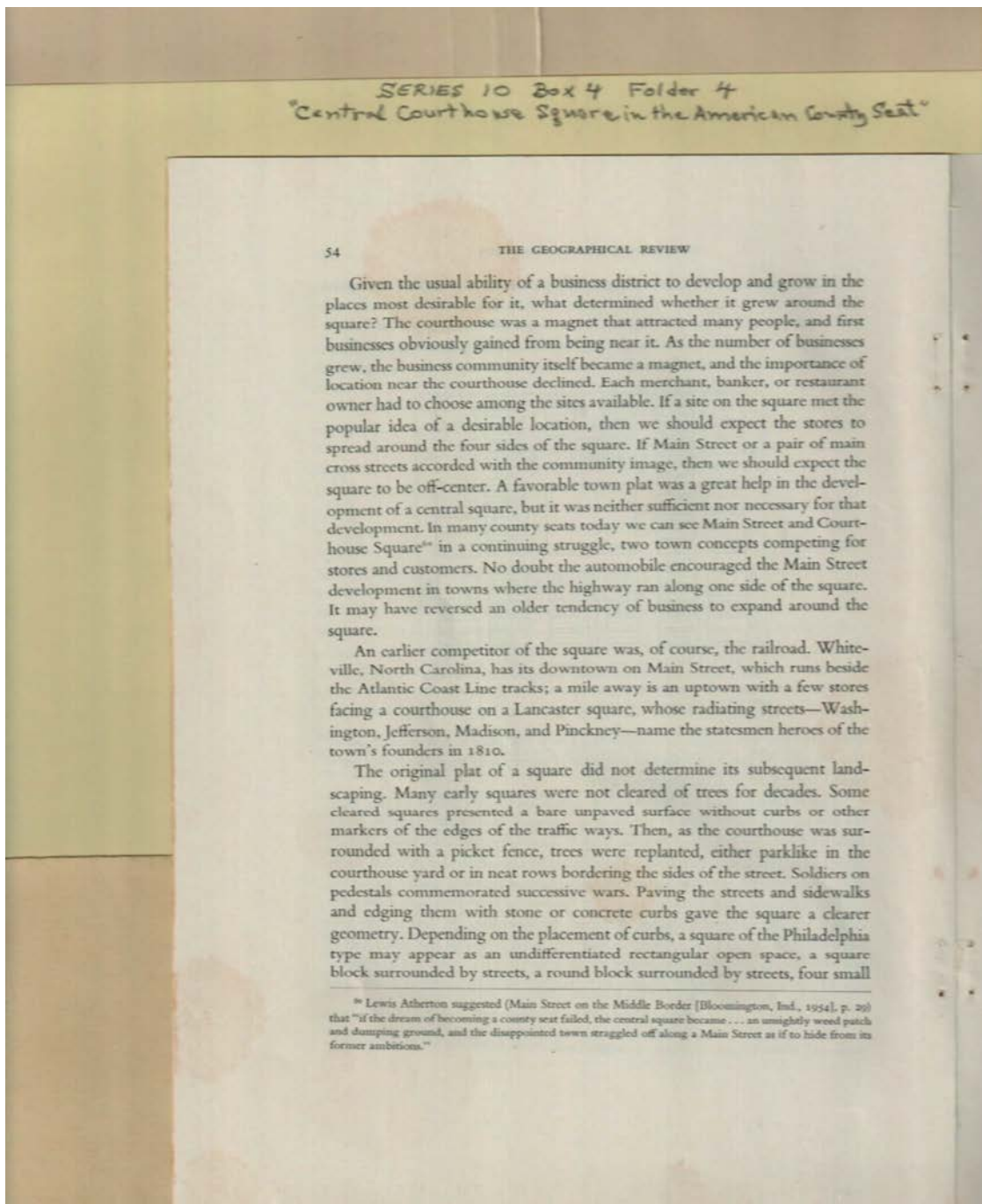
sketch



Frances Cabaniss Roberts Collection: Series 10, Box 4, Folder 4

Price, Edward T. "Central Courthouse Square in the American County Seat," reprinted post-1968

Image 27 r10\_04-04-000-0138 [Contents](#) [Index](#) [About](#)



**Names:**

Atherton, Lewis

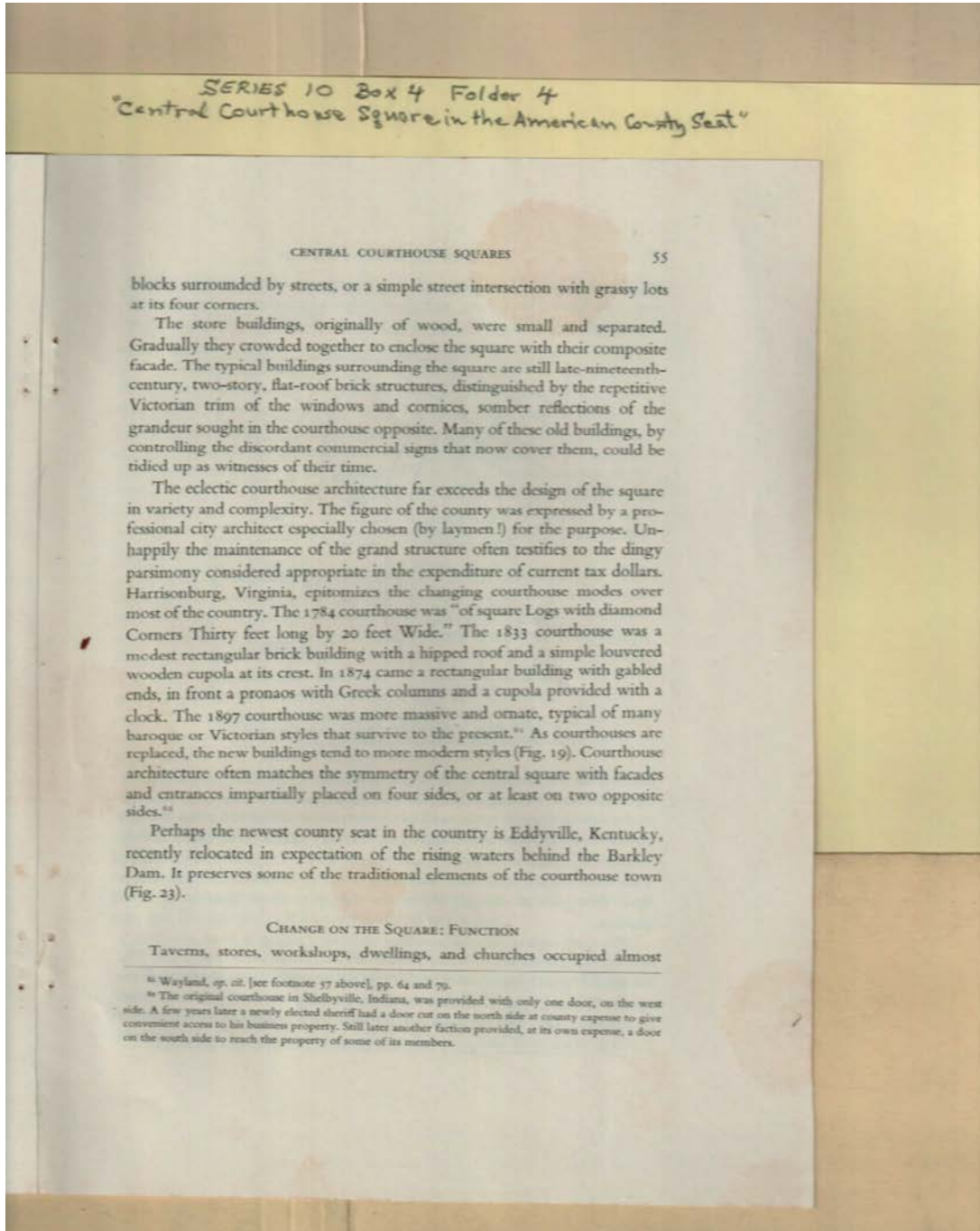
**Types:**

booklet

Frances Cabaniss Roberts Collection: Series 10, Box 4, Folder 4

Price, Edward T. "Central Courthouse Square in the American County Seat," reprinted post-1968

Image 28 r10\_04-04-000-0139 [Contents](#) [Index](#) [About](#)

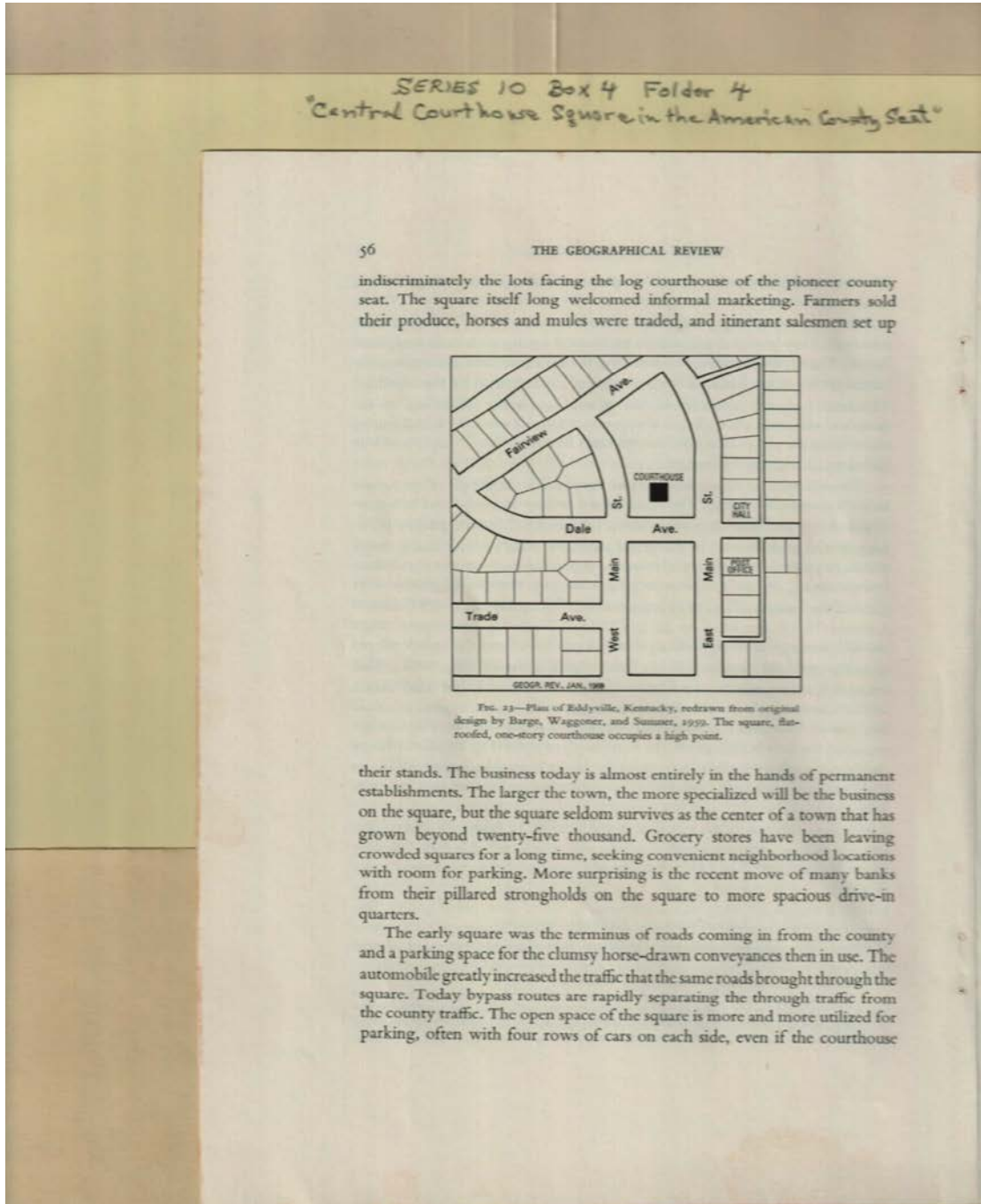


**Names:**

Wayland, John W.

**Types:**

booklet



**Names:**

Barge,

Public Square Plan

Sumner,

Waggoner,

**Places:**

Eddyville, KY

**Types:**

booklet

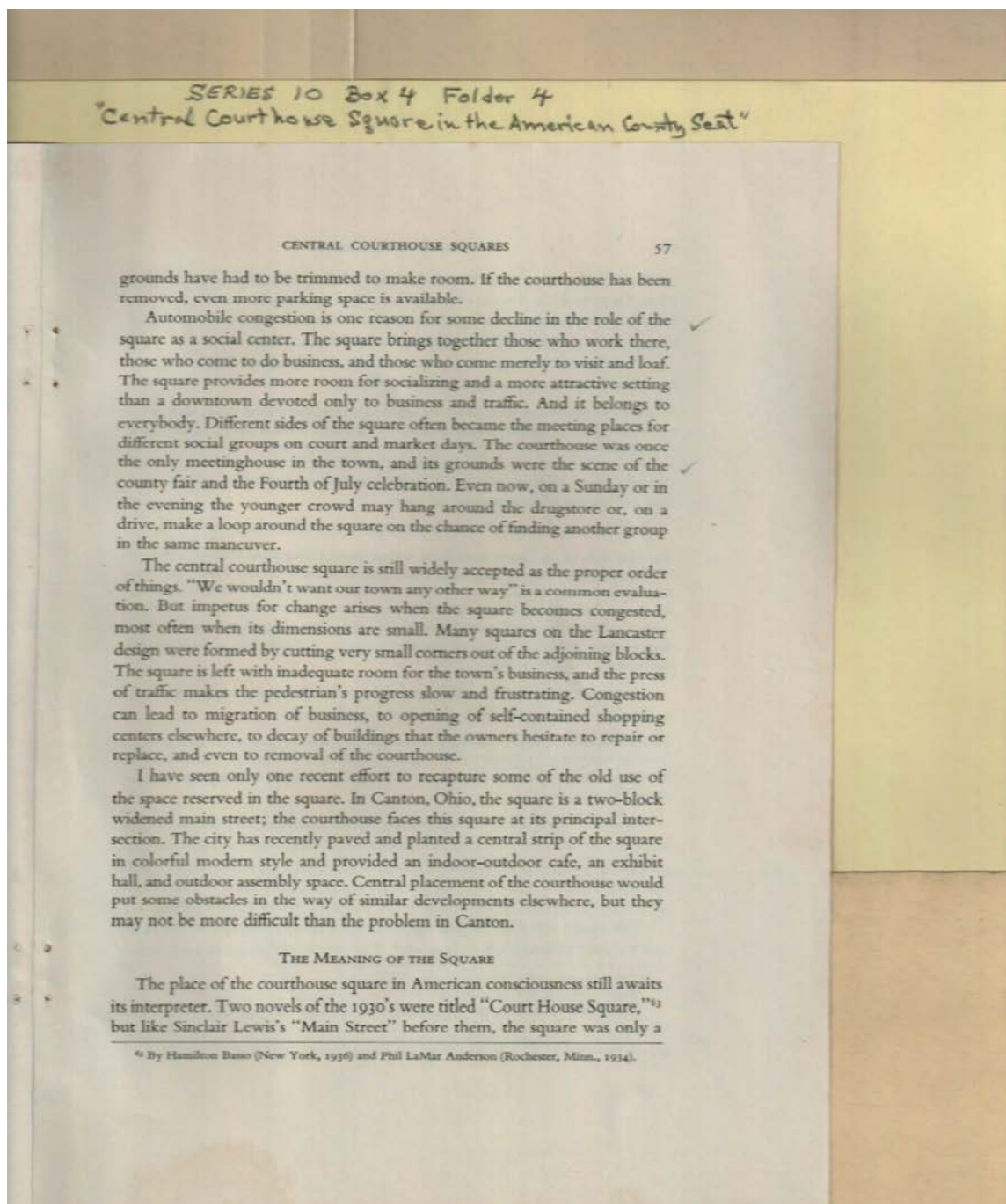
sketch



Frances Cabaniss Roberts Collection: Series 10, Box 4, Folder 4

Price, Edward T. "Central Courthouse Square in the American County Seat," reprinted post-1968

Image 30 r10\_04-04-000-0141 [Contents](#) [Index](#) [About](#)



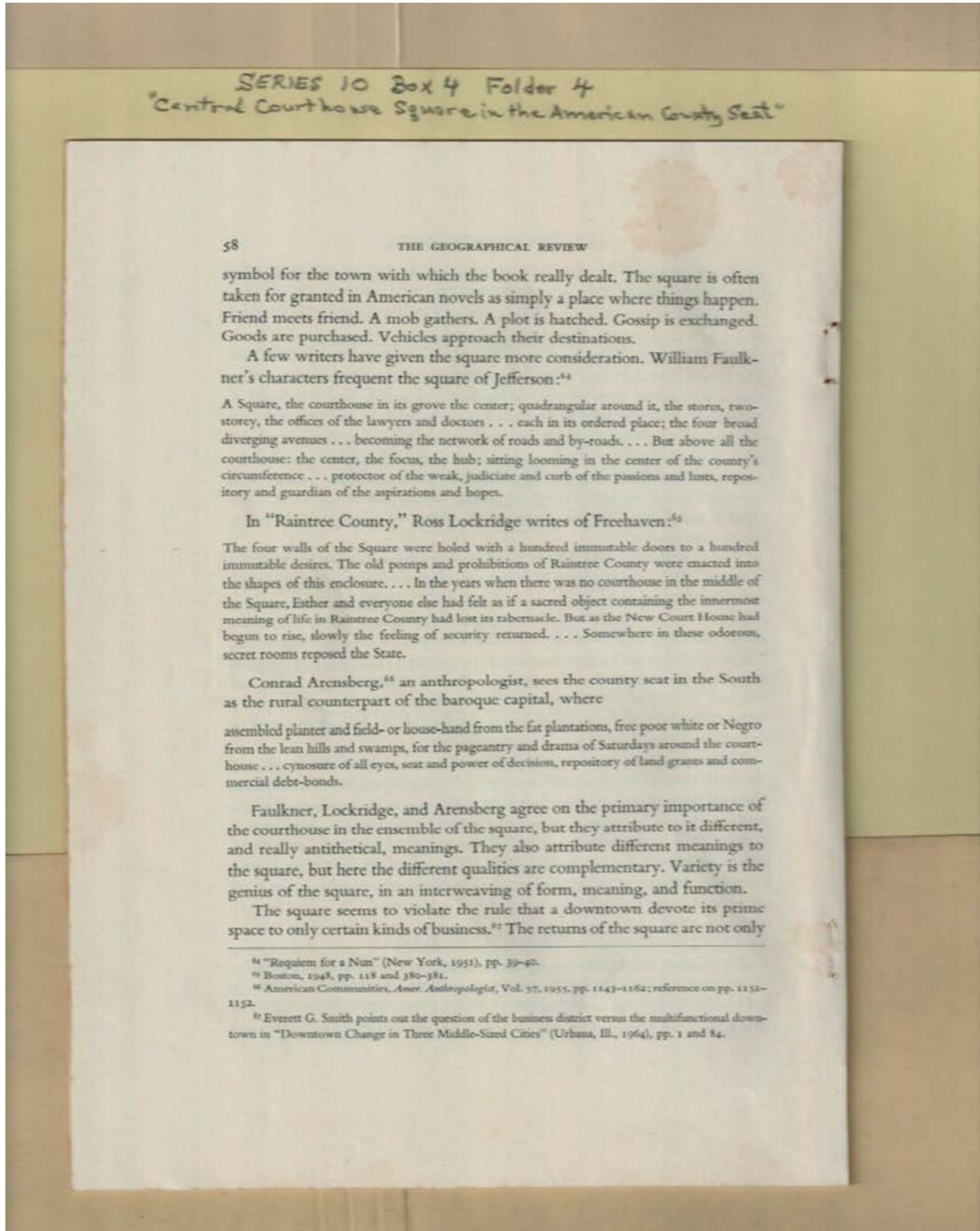
**Names:**

Anderson, Phil  
LaMar

Basson, Hamilton

**Types:**

booklet



**Names:**

Arensberg, Conrad

Faulkner, William

Lockridge, Ross

Smith, Everett G.

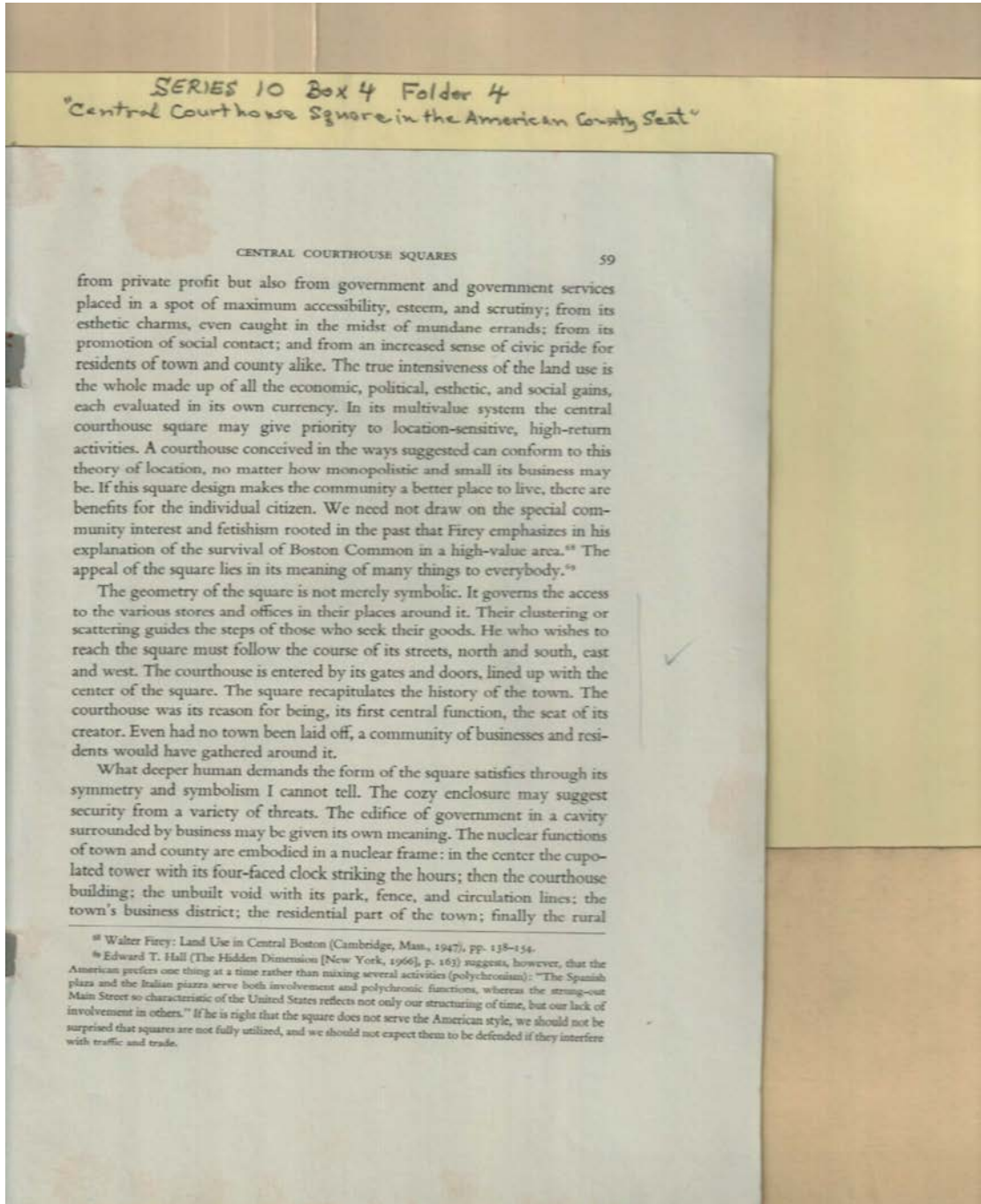
**Types:**

booklet

Frances Cabaniss Roberts Collection: Series 10, Box 4, Folder 4

Price, Edward T. "Central Courthouse Square in the American County Seat," reprinted post-1968

Image 32 r10\_04-04-000-0143 [Contents](#) [Index](#) [About](#)



**Names:**

Firey, Walter

Hall, Edward T.

**Types:**

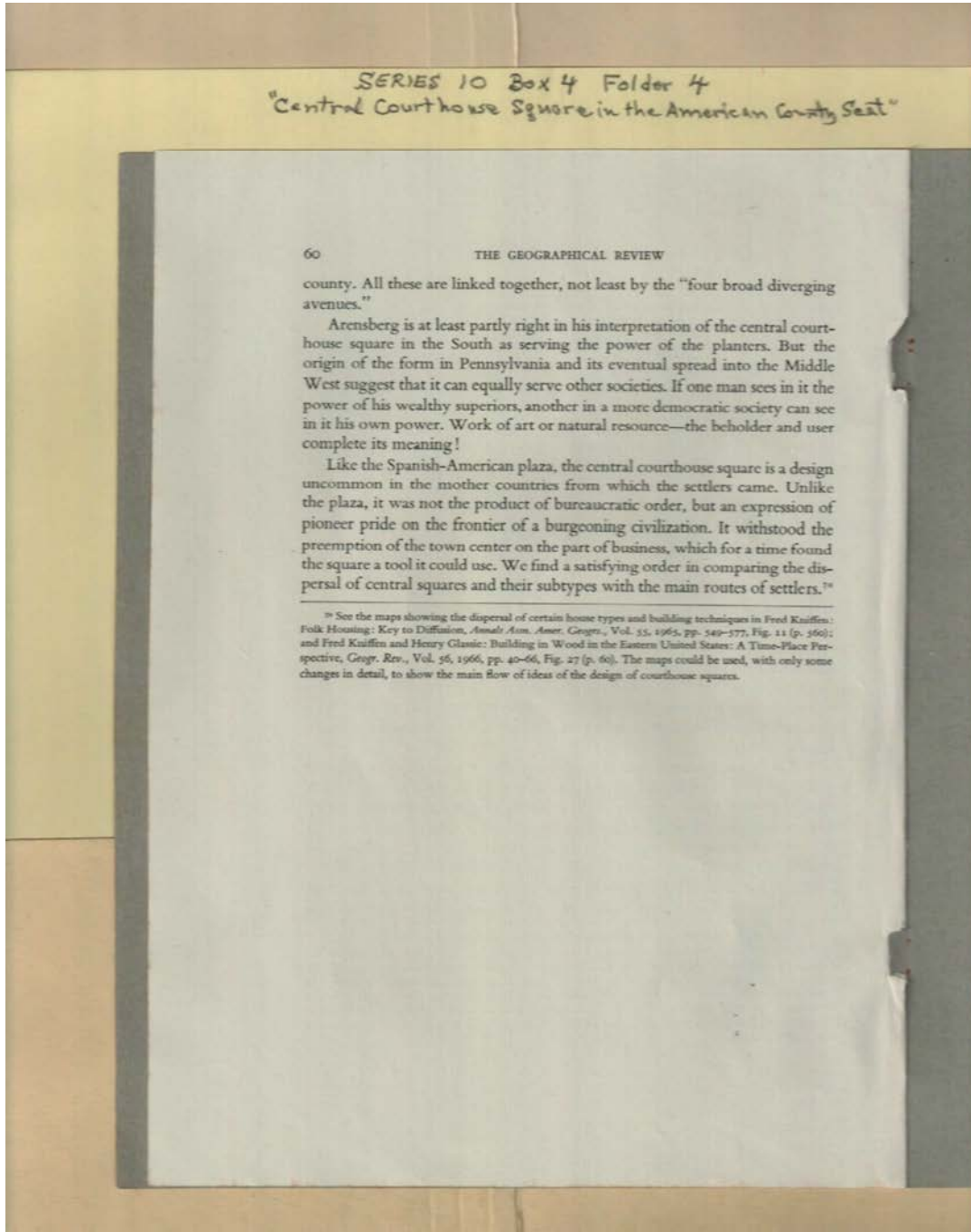
booklet



Frances Cabaniss Roberts Collection: Series 10, Box 4, Folder 4

Price, Edward T. "Central Courthouse Square in the American County Seat," reprinted post-1968

Image 33 r10\_04-04-000-0144 [Contents](#) [Index](#) [About](#)



**Names:**

Arensberg, Conrad

Glassie, Henry

Kniffen, Fred

**Types:**

booklet

**Frances Cabaniss Roberts Collection: Series 10, Box 4, Folder 4**

**Price, Edward T. "Central Courthouse Square in the American County Seat," reprinted post-1968**

[Contents](#)   [Index](#)   [About](#)

**Table of Contents**

[Image 1](#) (r10\_04-04-000-0112)  
[Image 2](#) (r10\_04-04-000-0113)  
[Image 3](#) (r10\_04-04-000-0114)  
[Image 4](#) (r10\_04-04-000-0115)  
[Image 5](#) (r10\_04-04-000-0116)  
[Image 6](#) (r10\_04-04-000-0117)  
[Image 7](#) (r10\_04-04-000-0118)  
[Image 8](#) (r10\_04-04-000-0119)  
[Image 9](#) (r10\_04-04-000-0120)

[Image 10](#) (r10\_04-04-000-0121)  
[Image 11](#) (r10\_04-04-000-0122)  
[Image 12](#) (r10\_04-04-000-0123)  
[Image 13](#) (r10\_04-04-000-0124)  
[Image 14](#) (r10\_04-04-000-0125)  
[Image 15](#) (r10\_04-04-000-0126)  
[Image 16](#) (r10\_04-04-000-0127)  
[Image 17](#) (r10\_04-04-000-0128)  
[Image 18](#) (r10\_04-04-000-0129)

[Image 19](#) (r10\_04-04-000-0130)  
[Image 20](#) (r10\_04-04-000-0131)  
[Image 21](#) (r10\_04-04-000-0132)  
[Image 22](#) (r10\_04-04-000-0133)  
[Image 23](#) (r10\_04-04-000-0134)  
[Image 24](#) (r10\_04-04-000-0135)  
[Image 25](#) (r10\_04-04-000-0136)  
[Image 26](#) (r10\_04-04-000-0137)  
[Image 27](#) (r10\_04-04-000-0138)

[Image 28](#) (r10\_04-04-000-0139)  
[Image 29](#) (r10\_04-04-000-0140)  
[Image 30](#) (r10\_04-04-000-0141)  
[Image 31](#) (r10\_04-04-000-0142)  
[Image 32](#) (r10\_04-04-000-0143)  
[Image 33](#) (r10\_04-04-000-0144)  
[Table of Contents](#)  
[Name & Place Index](#)  
[About the Collection](#)

**Frances Cabaniss Roberts Collection: Series 10, Box 4, Folder 4**

**Price, Edward T. "Central Courthouse Square in the American County Seat," reprinted post-1968**

[Contents](#) [Index](#) [About](#)

## **Name & Place Index**

Alexander, James [19](#)  
American Geographical Society [1](#)  
Anderson, Phil LaMar [30](#)  
Arensberg, Conrad [31](#), [33](#)  
Arnett, Ethel Stephens [12](#)  
Atherton, Lewis [27](#)  
Barge, [29](#)  
Basson, Hamilton [30](#)  
Bell, Timothy [2](#)  
Bloomington, IN [3](#)  
Boyd, Miriam, Miss [19](#)  
Brown, Alexander [10](#)  
Calico, Forrest [14](#)  
Camblin, Gilbert [9](#)  
Carlson, Charles X. [13](#)  
Central Courthouse Square in America [1](#), [2](#)  
Central Courthouse Squares [5](#)  
Chapman, Edmund H. [17](#)  
Clark, Walter [17](#)  
Collot, Victor [19](#)  
Common Types of Courthouse Squares [3](#)  
Common, Robert [9](#)  
Courthouse Squares Incomplete [7](#)  
Courthouse Squares Not Central in Town [6](#)  
Courthouse Square [3](#)  
Crush, Charles W. [16](#)  
Davenport, William [2](#)  
Droubay, Melvin [26](#)  
Eargle, Ken [20](#)  
Eddyville, KY [29](#)  
Ellis, Franklin [10](#)  
Ellis, [13](#), [14](#)  
Evans, Samuel [10](#)  
Evans, [13](#), [14](#)  
Faulkner, William [31](#)  
Firey, Walter [32](#)  
Floyd, Viola C. [14](#)  
Glassic, Henry [33](#)  
Goodspeed, W. A. [24](#)  
Graham, A. A. [15](#)  
Gray, Mary Wiatt [11](#)  
Gutkind, Ervin A. [11](#)  
Hall, Edward T. [32](#)  
Henning, William Waller [19](#)  
Hull, Edward Boltwood [16](#)  
Hynes, Andrew [18](#)  
Kane, Joseph Nathan [4](#)  
Kniffen, Fred [33](#)  
Laurens, SC [20](#)  
Lewis, Samuel [9](#)  
Lexington, KY [20](#)  
Lockridge, Ross [31](#)  
Lynchburg, TN [23](#)  
Mathews, Maurice [16](#)  
McGee, Nora L. [17](#)  
Miller, Charles C. [15](#)  
Mitchell, James [14](#)  
Montgomery, Lizzie Wilson [19](#)  
Montgomery, Morton L. [14](#)  
Myers, Albert Cook [12](#)  
New York, NY [1](#)  
Okmulgee, OK [23](#)  
Pagel, Karl [4](#)  
Penn, William [12](#)  
Philadelphia Square Counties [8](#)  
Price, Alan [2](#)  
Price, Edward T. [1](#)  
Price, Eugene, Dr. [2](#)  
Prowell, George R. [13](#)  
Public Square Plans [18](#)  
Public Square Plan [26](#), [29](#)  
Public Square [20](#), [23](#)  
Rawlings, Mary [19](#)  
Rawlins, H. E. [15](#)  
Reps, John W. [10](#)  
Sauthier, Claude Joseph [11](#)  
Schlenger, Herbert [4](#)  
Seltzer, Leon E. [4](#)  
Shelbyville Square Plan [22](#)  
Shelbyville, TN [23](#)  
Smith, Everett G. [31](#)  
Spread of Shelbyville Square Plan [21](#)  
Staples, Charles R. [19](#)  
Stevenson, Frederic R. [16](#)  
Sumner, [29](#)  
Waggoner, [29](#)  
Wayland, John W. [24](#), [28](#)  
Wilkes, M. H. [20](#)  
Winchester, TN [23](#)  
Windom, MN [26](#)  
Wrobel, Andrzej [9](#)  
Zane, Ebenezer [15](#)  
Zelinsky, Wilbur [2](#), [12](#), [14](#)  
Zuker, Paul [4](#)



# Frances Cabaniss Roberts Collection

**Preferred Citation:** Frances Cabaniss Roberts Collection, Archives and Special Collections, M. Louis Salmon Library, University of Alabama in Huntsville, Huntsville, AL.

**Collection Scope and Content:** The Collection of 114 Linear ft. includes a total of 156 Archival Boxes. The Frances Cabaniss Roberts collection covers the historical records of the Cabaniss Roberts family. This collection contains extensive correspondence records of the Cabaniss Roberts family circa 1830 to 1930.

**Archives/Special Collections Access Restrictions:** None

**Conditions Governing Use:** This material may be protected under U. S. Copyright Law (Title 17, U.S. Code) which governs the making of photocopies or reproductions of copyrighted materials. You may use the digitized material for private study, scholarship, or research. Though the University of Alabama in Huntsville Archives and Special Collections has physical ownership of the material in its collections, in some cases we may not own the copyright to the material. It is the patron's obligation to determine and satisfy copyright restrictions when publishing or otherwise distributing materials found in our collections.

**Provenance:** Gift of Johanna Shields on October 28, 2006.



THE UNIVERSITY OF  
ALABAMA IN HUNTSVILLE

**The UAH Archives and Special Collections  
M. Louis Salmon Library**