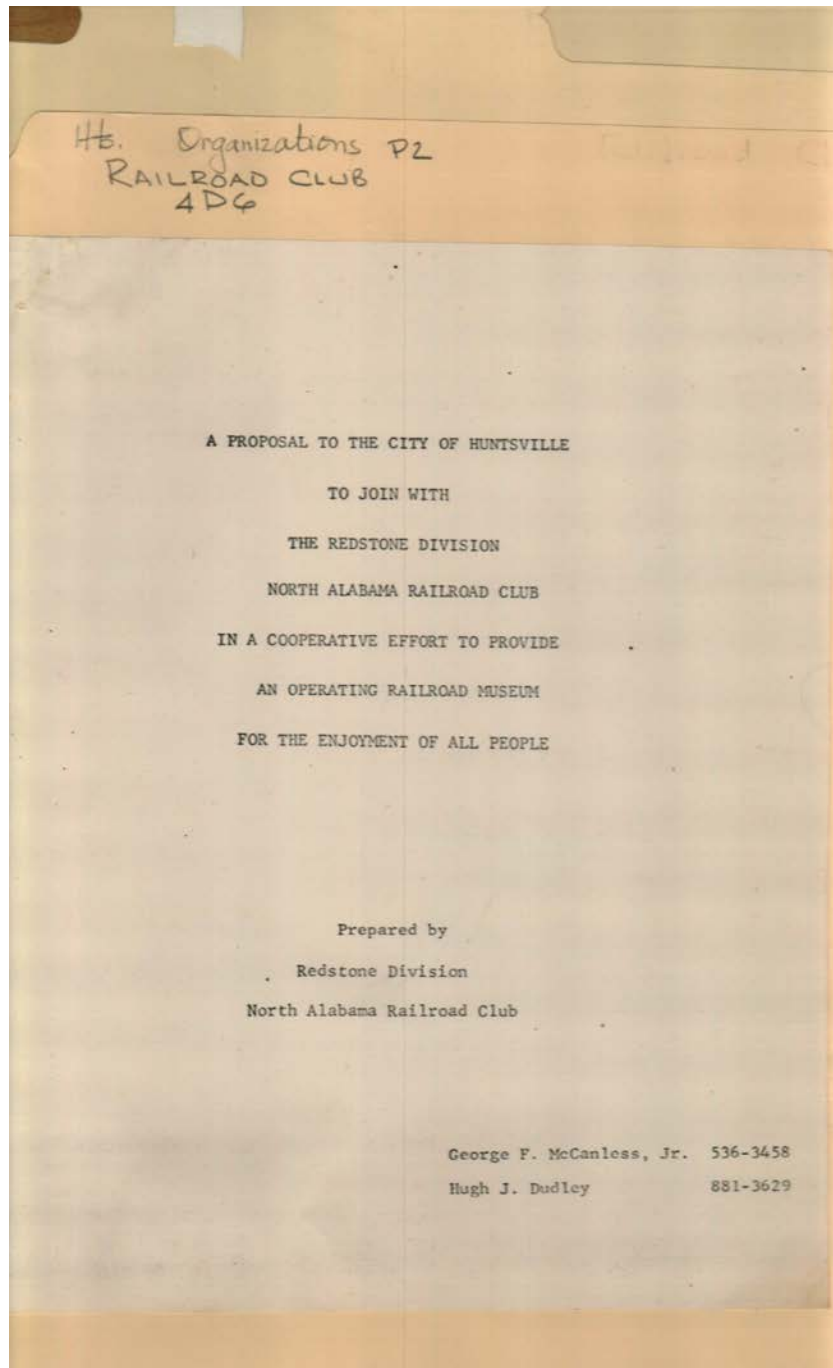


**Frances Cabaniss Roberts Collection: Series 4, Subseries D, Box 6, Folder 2  
Huntsville Railroad Club Proposal and Materials**

Image 1 r04d06-02-000-0001 [Contents](#) [Index](#) [About](#)



**Names:**

Dudley, Hugh J.

McCanless, George  
F., Jr.

North Alabama  
Railroad Club

**Places:**

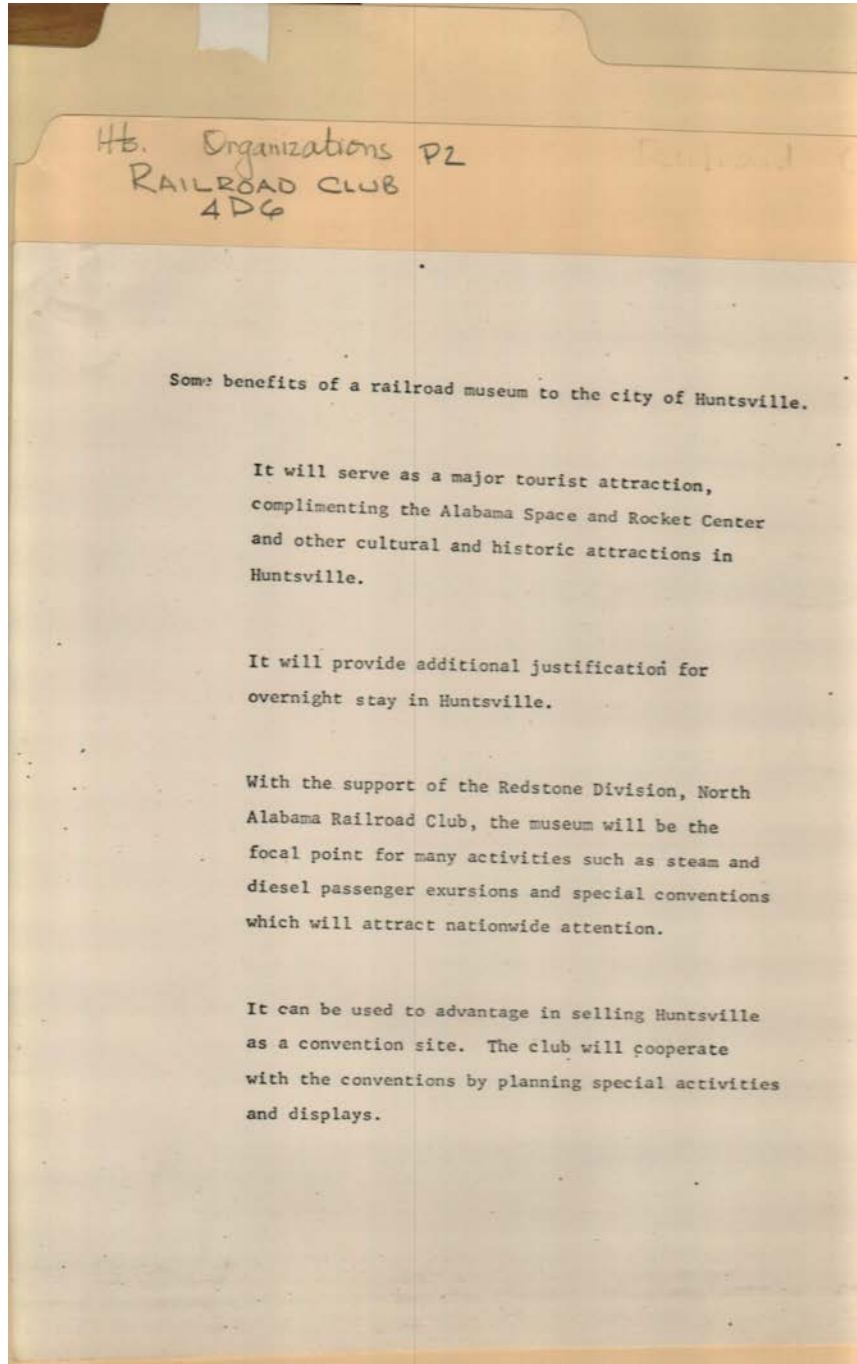
Huntsville, AL

**Types:**

proposal

Huntsville Railroad Club Proposal and Materials

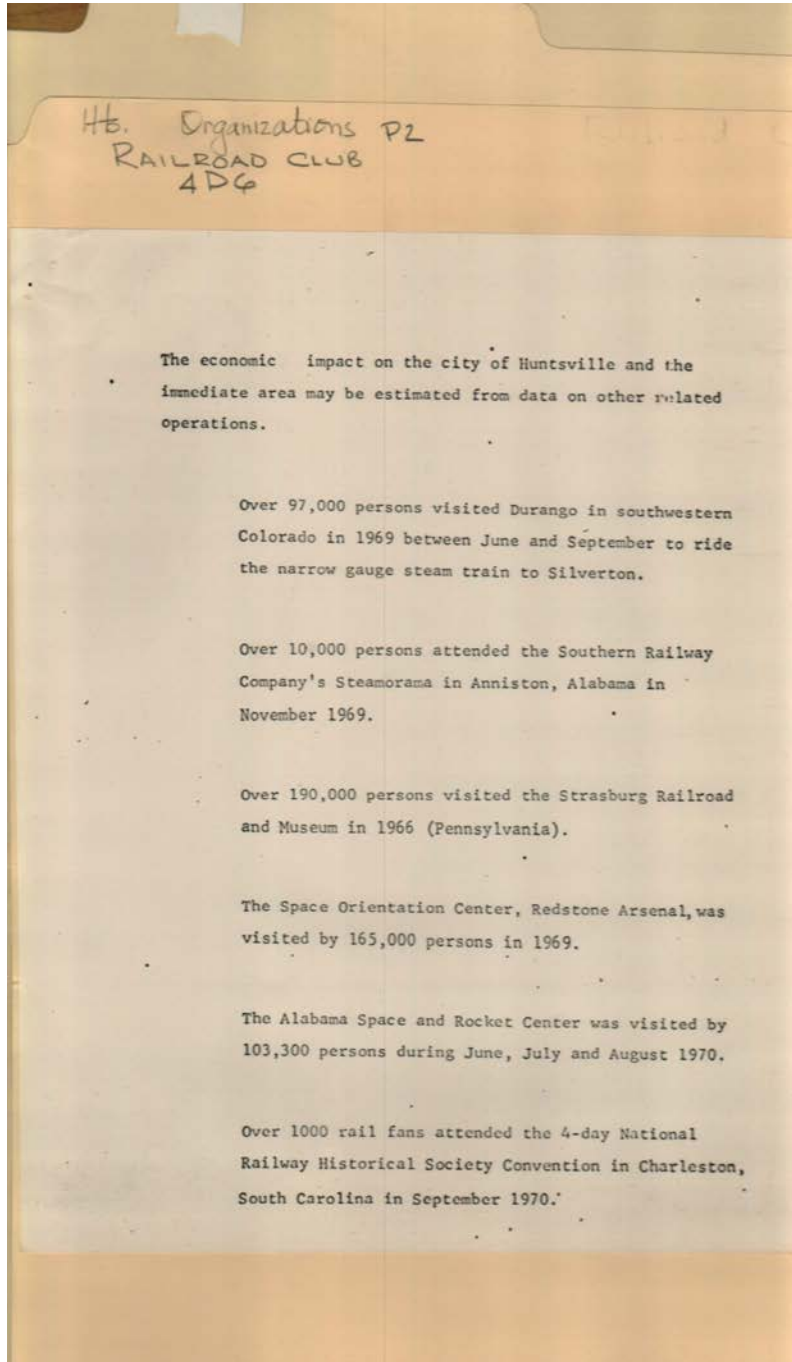
Image 2 r04d06-02-000-0002 [Contents](#) [Index](#) [About](#)



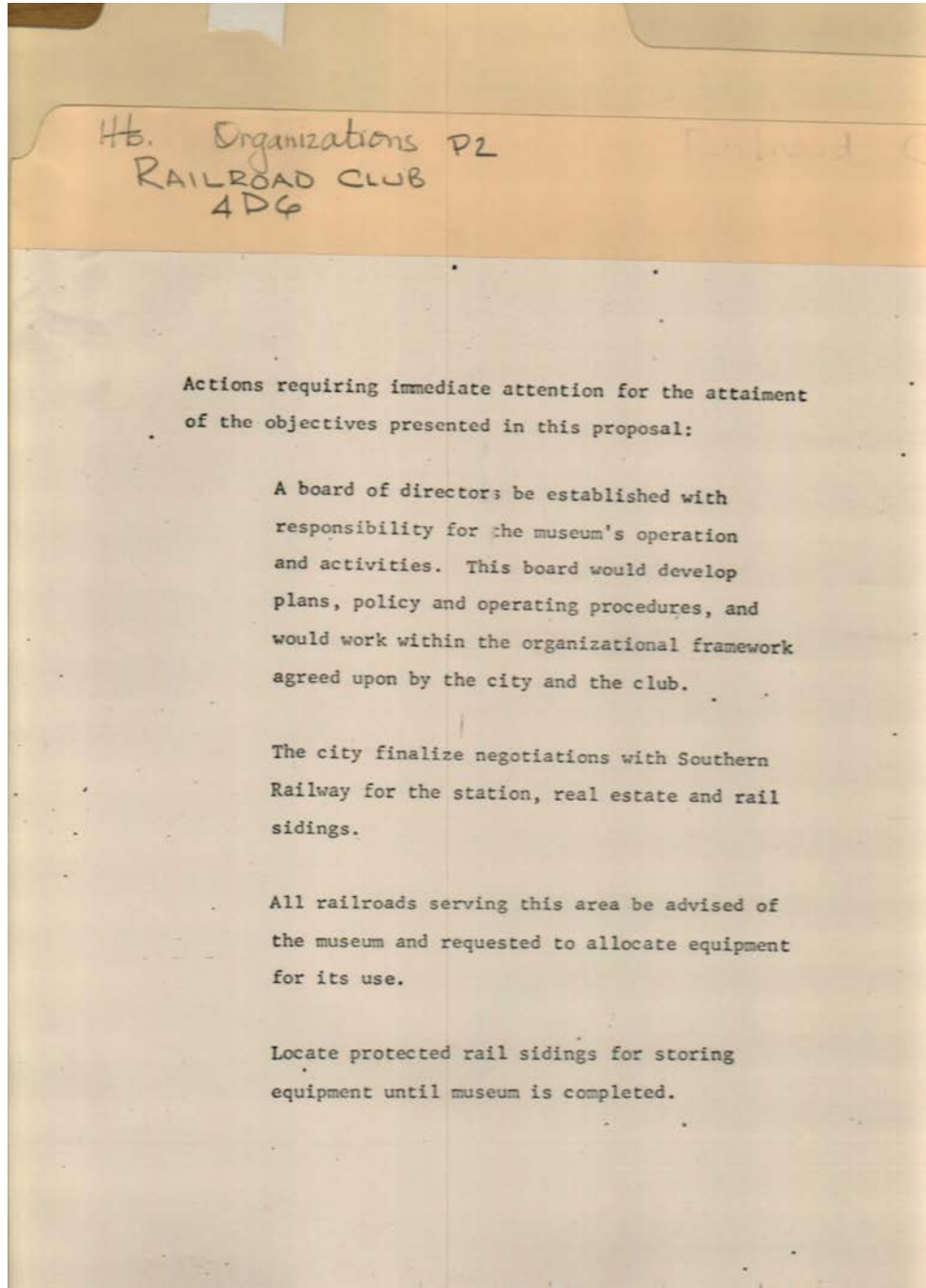
Types:  
proposal

Huntsville Railroad Club Proposal and Materials

Image 3 r04d06-02-000-0003 [Contents](#) [Index](#) [About](#)



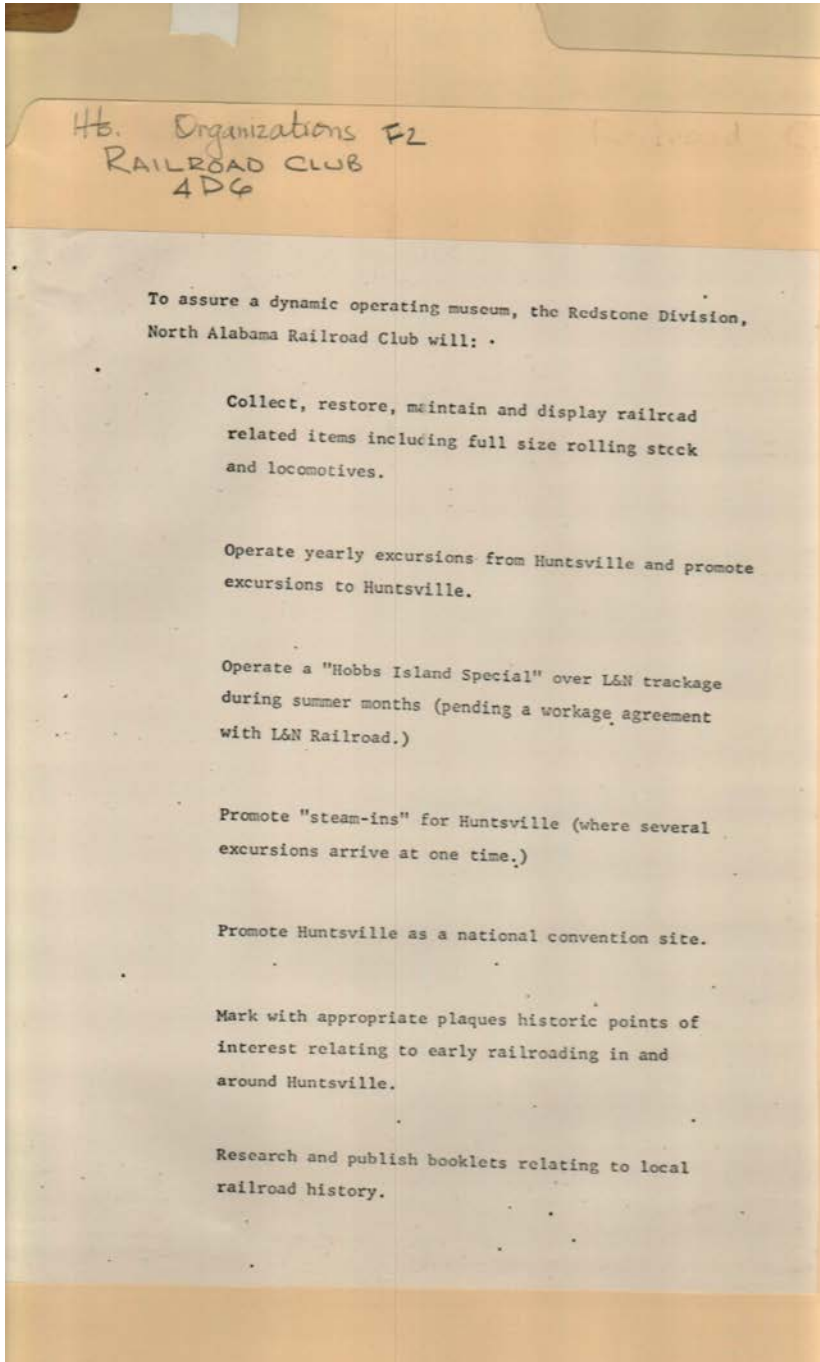
Types:  
proposal



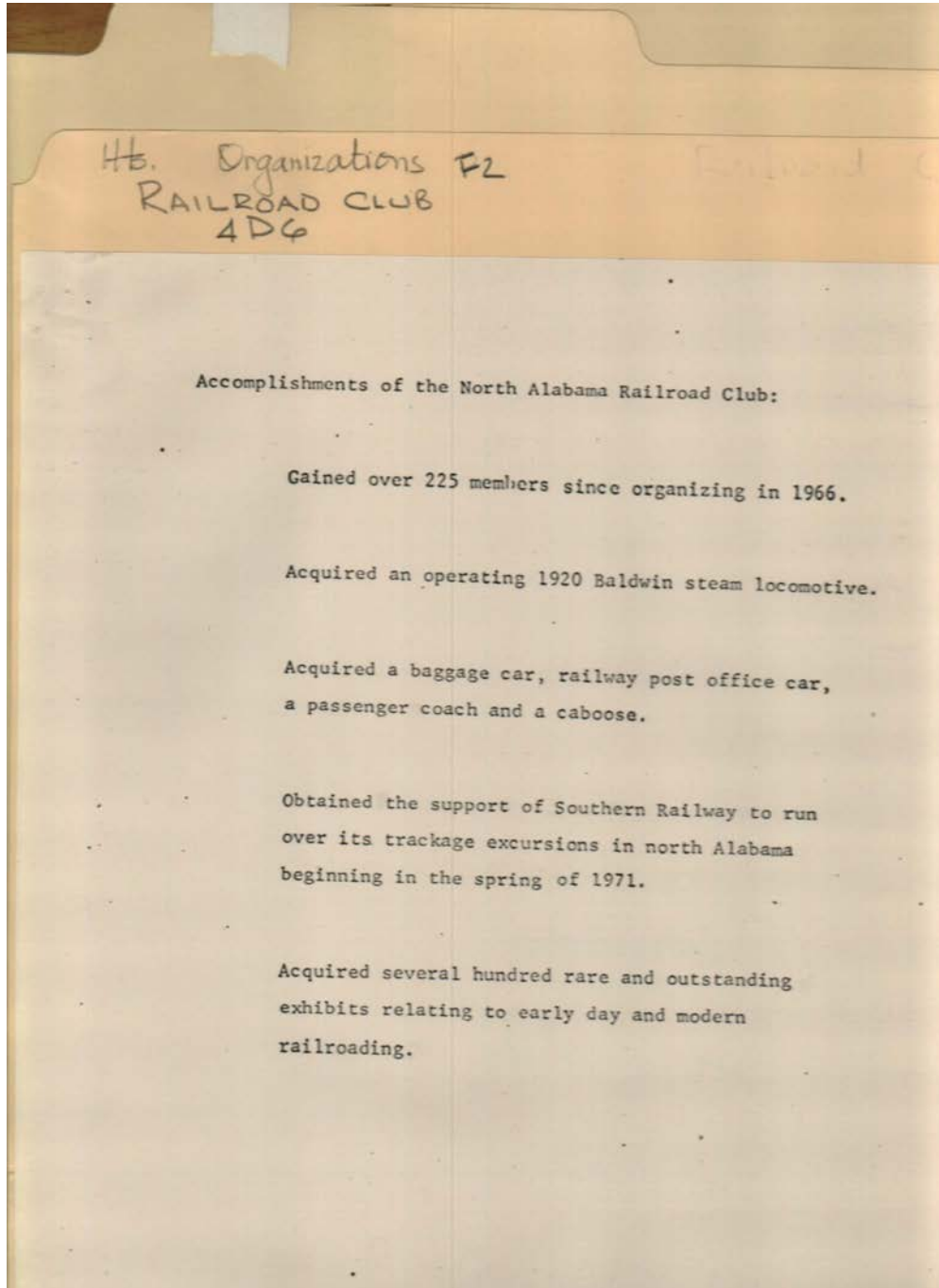
Types:  
proposal

Huntsville Railroad Club Proposal and Materials

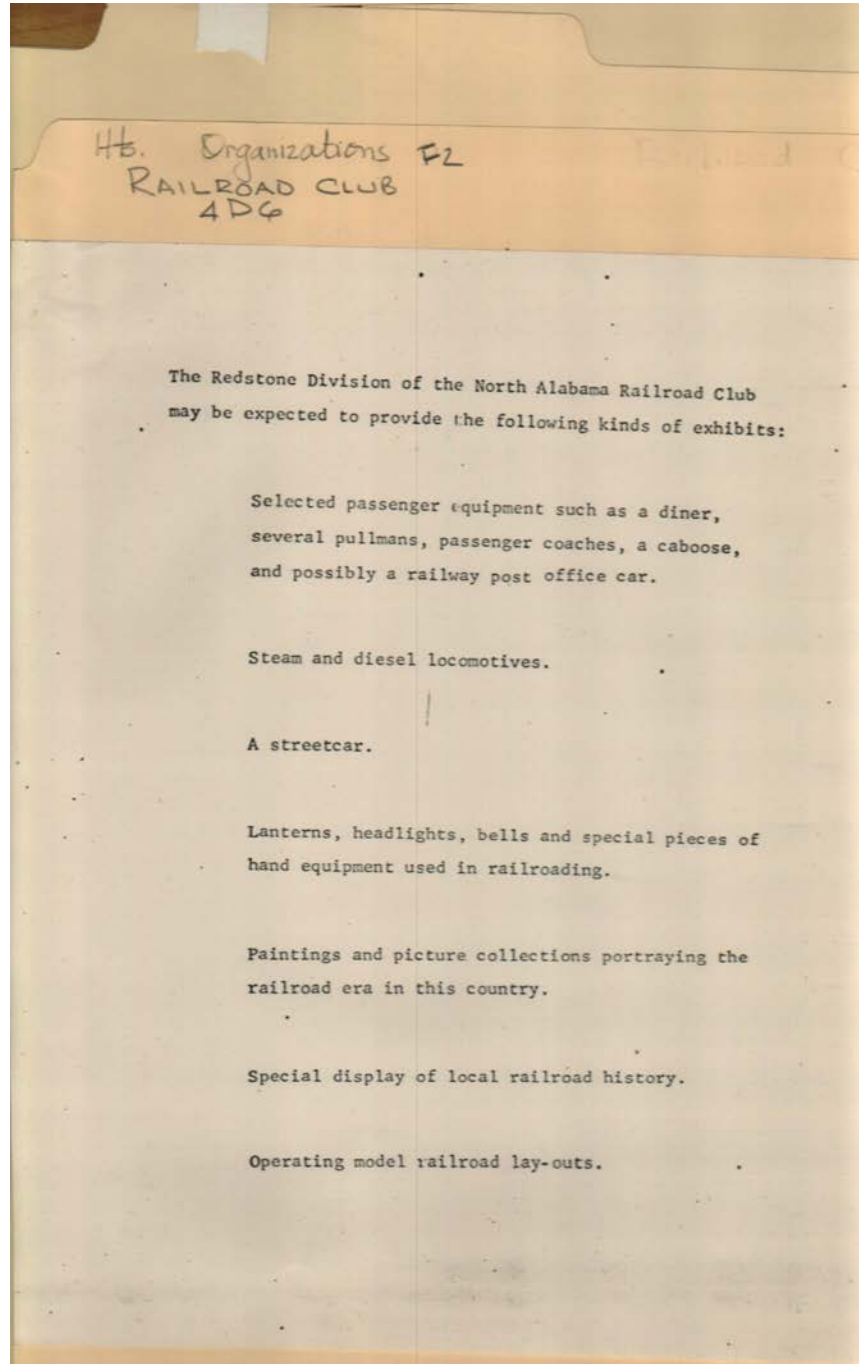
Image 5 r04d06-02-000-0005 [Contents](#) [Index](#) [About](#)



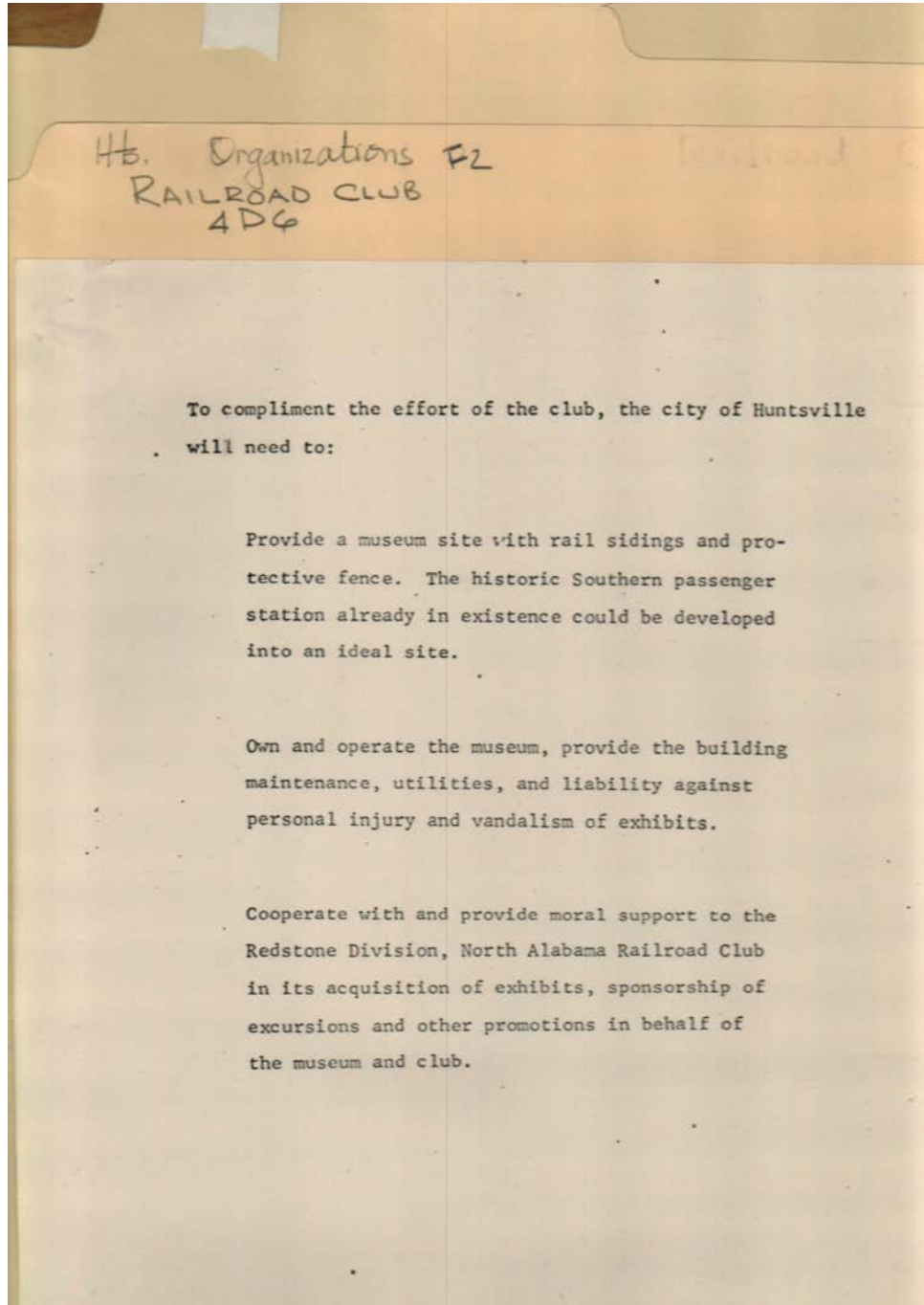
Types:  
proposal



Types:  
proposal



Types:  
proposal

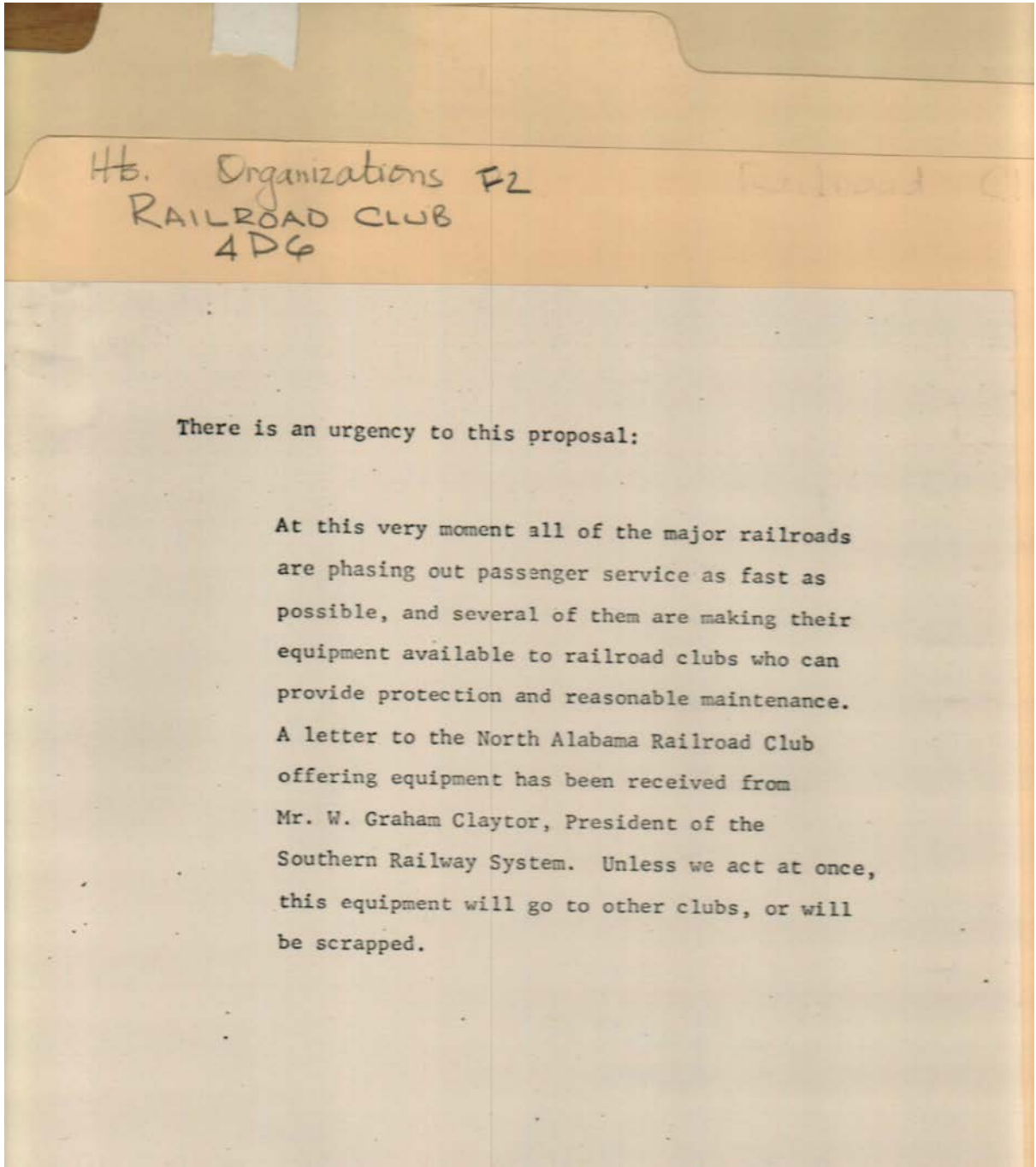


Types:  
proposal



Huntsville Railroad Club Proposal and Materials

Image 9 r04d06-02-000-0009 [Contents](#) [Index](#) [About](#)

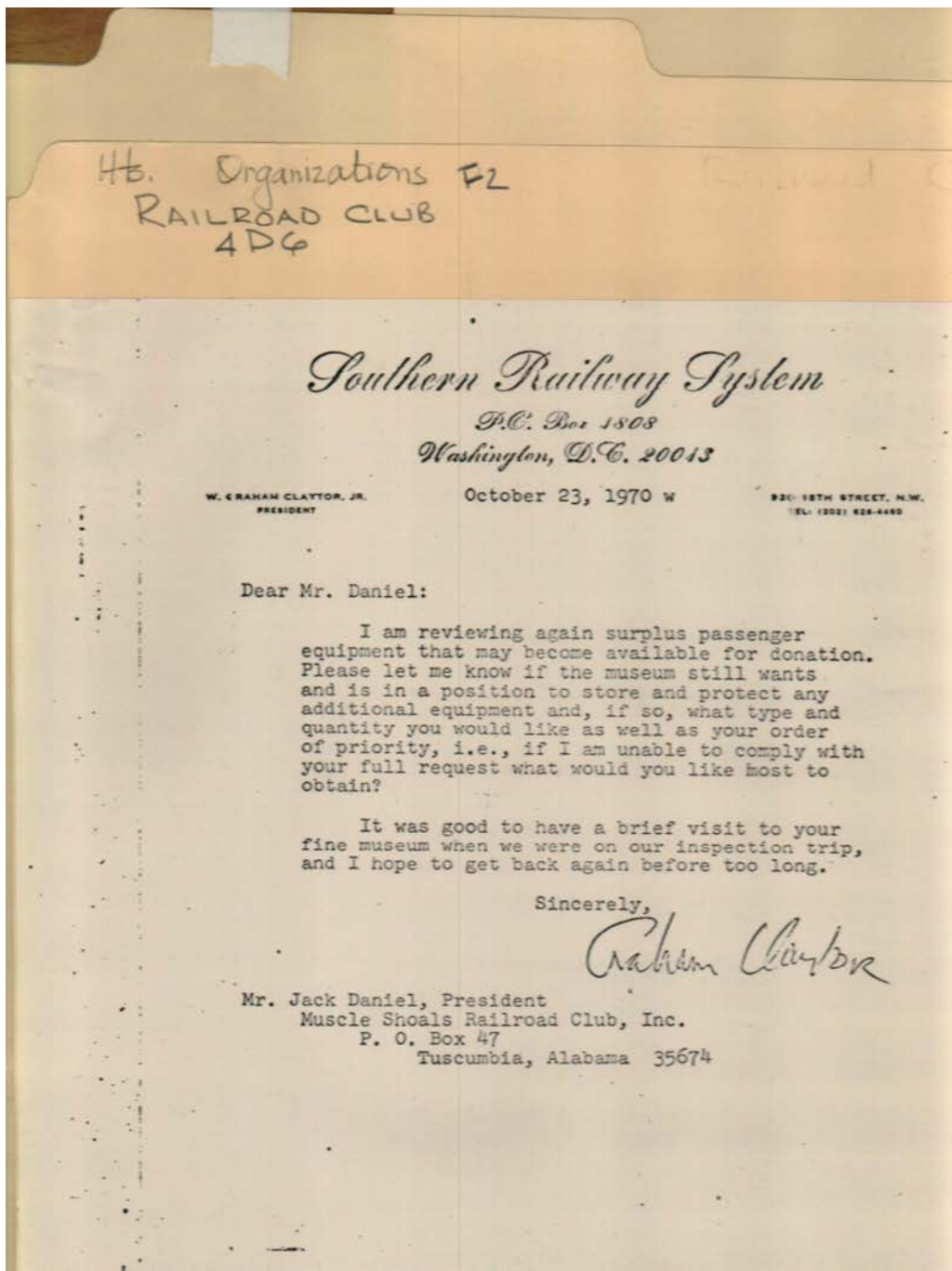


**Names:**

Claytor, W. Graham

**Types:**

proposal



**Names:**

Claytor, W. Graham

Daniel, Jack

**Places:**

Washington, DC

**Types:**

correspondence

**Dates:**

Oct 23, 1970

Huntsville Railroad Club Proposal and Materials

HB. Organizations F2  
RAILROAD CLUB  
4DG

Estimates have been prepared to provide an indication of the initial cost of placing the museum in operation and of the yearly recurring cost.

Initial Cost:	Plan A*	Plan B
Fencing and gates	\$ 4,200	\$ 2,500
Track relocation	10,300	5,000
Building renovation	1,000	1,000
Furniture and outfitting	2,000	2,000
Outdoor lighting	1,000	200
	<u>\$18,500</u>	<u>\$10,700</u>

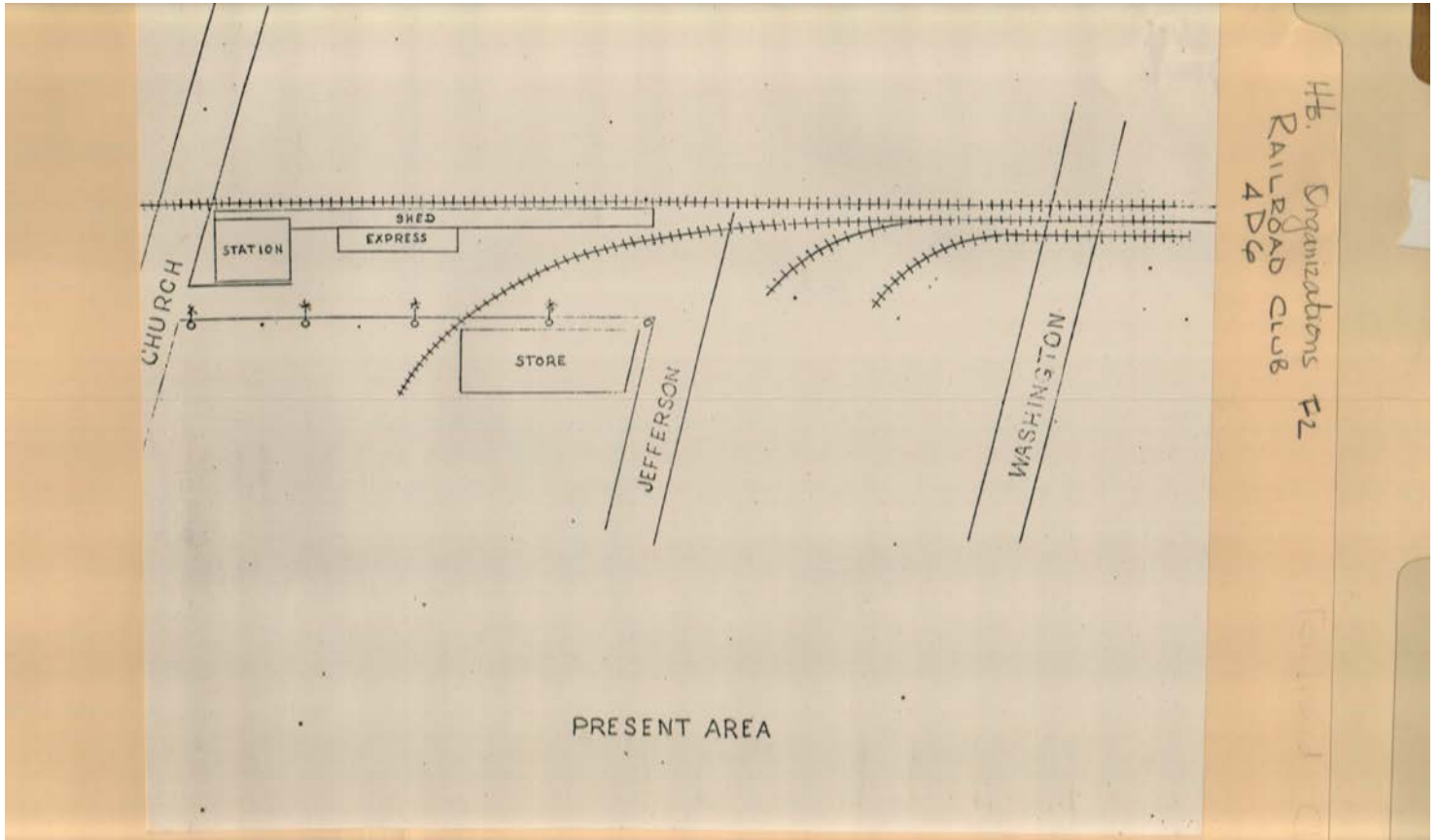
Operating Cost:	
Two attendants @ \$4,000/yr.	\$ 8,000
Janitor/Repairman	6,000
Utilities @ \$50/mo.	600
Maintenance	500
Insurance	200
	<u>\$15,300</u>

\* Plan A provides for significantly more railway storage and area for expansion.

Types:  
proposal

Huntsville Railroad Club Proposal and Materials

Image 12 r04d06-02-000-0012 [Contents](#) [Index](#) [About](#)



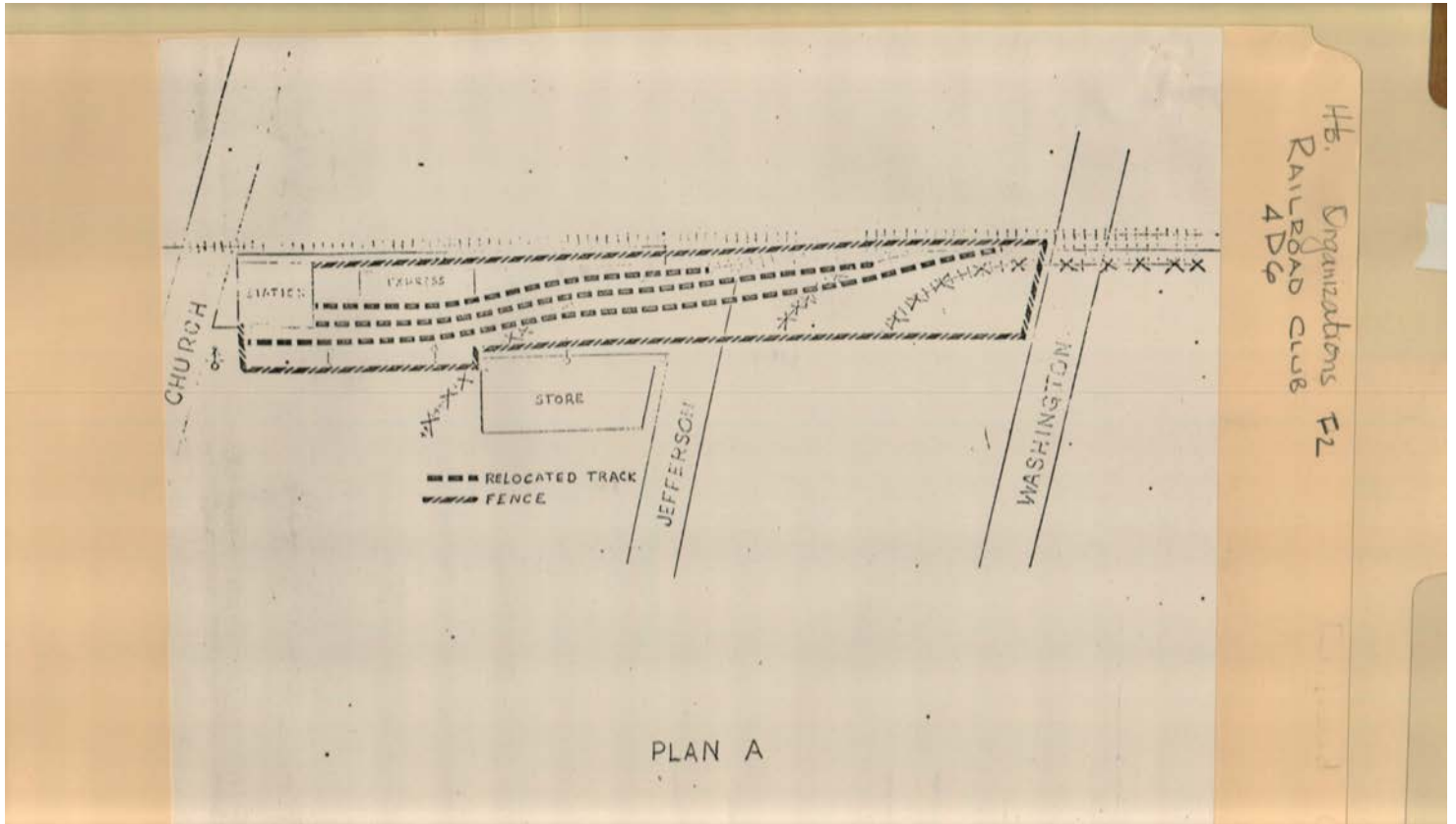
**Names:**

Huntsville Depot  
Area

**Types:**

map

Huntsville Railroad Club Proposal and Materials



**Names:**

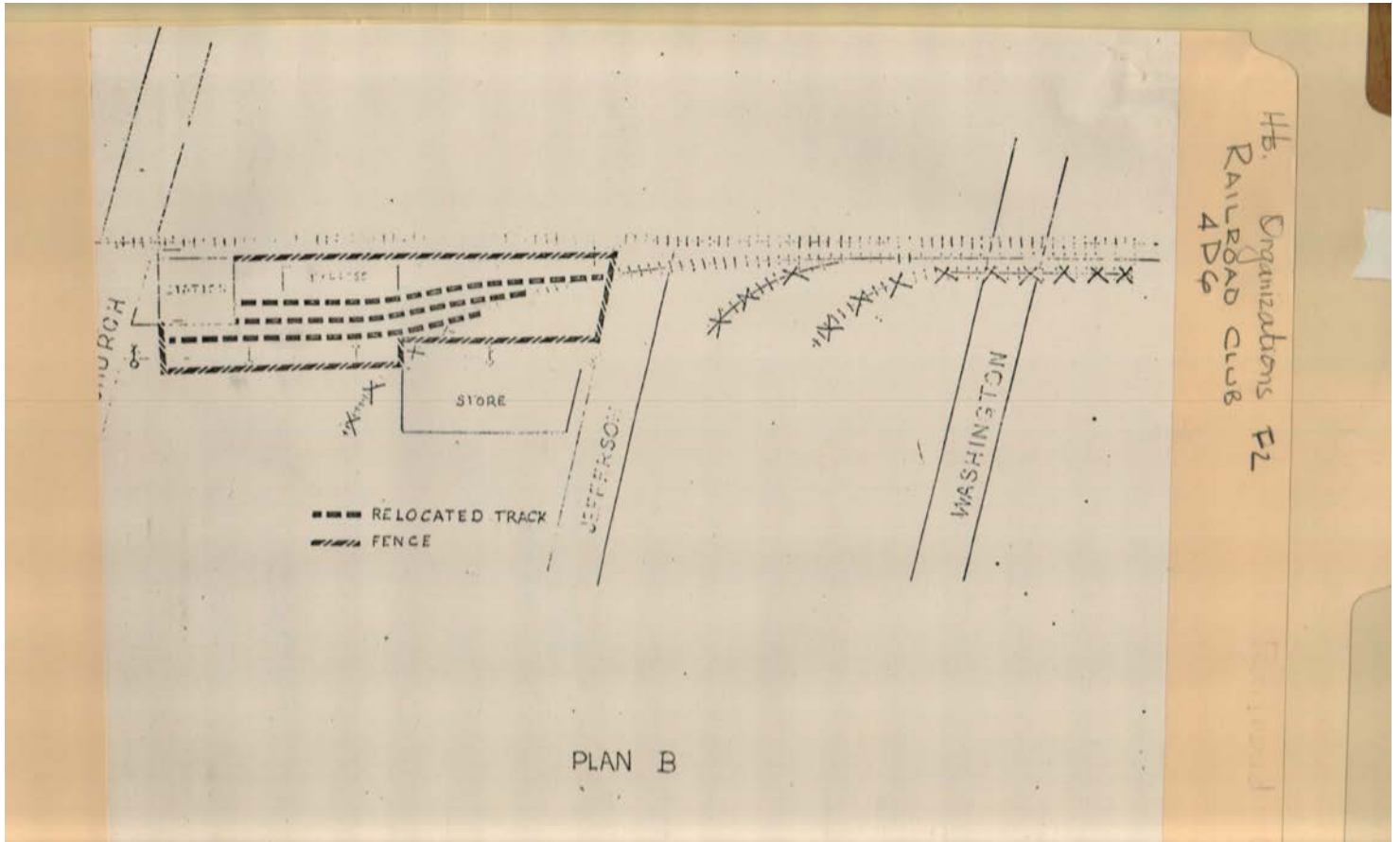
Huntsville Depot  
Area

**Types:**

map

Huntsville Railroad Club Proposal and Materials

Image 14 r04d06-02-000-0014 [Contents](#) [Index](#) [About](#)



**Names:**

Huntsville Depot  
Area

**Types:**

map

HB. Organizations F2  
RAILROAD CLUB  
4DG

HUNTSVILLE RAILROAD EXHIBITION  
Projected Income Statement

Jan 27, 71  
29m

INCOME		
Ticket Sales		
adult (39,000 @ .25)	37,500	
children (30,000 @ .75)	<u>22,500</u>	60,000
Concessions & Vending Mach. (60,000 @ .50)		<u>3,000</u>
		<u>63,000</u>
EXPENSES		
Fixed Expenses		
interest (1,000,000 @ 5.5%)	5,250	
principal, 30 yr. (1,000,000 @ .60)	3,500	
depreciation	1,500	
insurance (1,000,000 @ .02)	<u>200</u>	12,450
Operating Costs		
salary & benefits (56 hrs @ 2000 x 24 hrs)	20,013	
maintenance (janitor & repairs)	6,500	
utilities	600	
vendor & staff	<u>500</u>	23,613
Promotion		
billboards	9,000	
brochures	4,750	
general advertising	<u>2,000</u>	15,750
Contingency Expenses		
		<u>7,107</u>
		<u>63,000</u>

**Names:**

Huntsville Railroad  
Exhibition

**Places:**

Huntsville, AL

**Types:**

financials

**Dates:**

Jan 27, 1971

Hb. Organizations F2  
RAILROAD CLUB  
4DG

HUNTSVILLE RAILROAD EXHIBITION <sup>Jan 27, 71</sup>  
Projected Capital Expenditures

Depot Renovation		
roof	6,000	
display cabinets	6,000	
hosting	5,000	
wall repair	3,000	
lights (in & outside)	3,000	
plumbing	2,000	
furnishings	2,000	
concession fixtures	1,000	
ticket booth	1,000	
burgular alarm	1,000	30,000
External Improvements		
round house	20,000	
track relocation	11,000	
fence & gates	6,000	
parking area (5000 sq ft)	3,000	
water tower	2,000	
cool tower	2,000	42,000
Steam Locomotive		
		30,000
Sho Locomotive		
		15,000
Other Rolling Stock		
		17,000

**Names:**

Huntsville Railroad  
Exhibition

**Places:**

Huntsville, AL

**Types:**

financials

**Dates:**

Jan 27, 1971



Huntsville Railroad Club Proposal and Materials

Image 17 r04d06-02-000-0017 [Contents](#) [Index](#) [About](#)

Hb. Organizations F2  
RAILROAD CLUB  
4DG

Model RR Display	11,000
Telegraph Display	2,000
Civil War Hist. of Depot Display	<u>3,000</u>
TOTAL	150,000

**Names:**

Huntsville Railroad  
Exhibition

**Places:**

Huntsville, AL

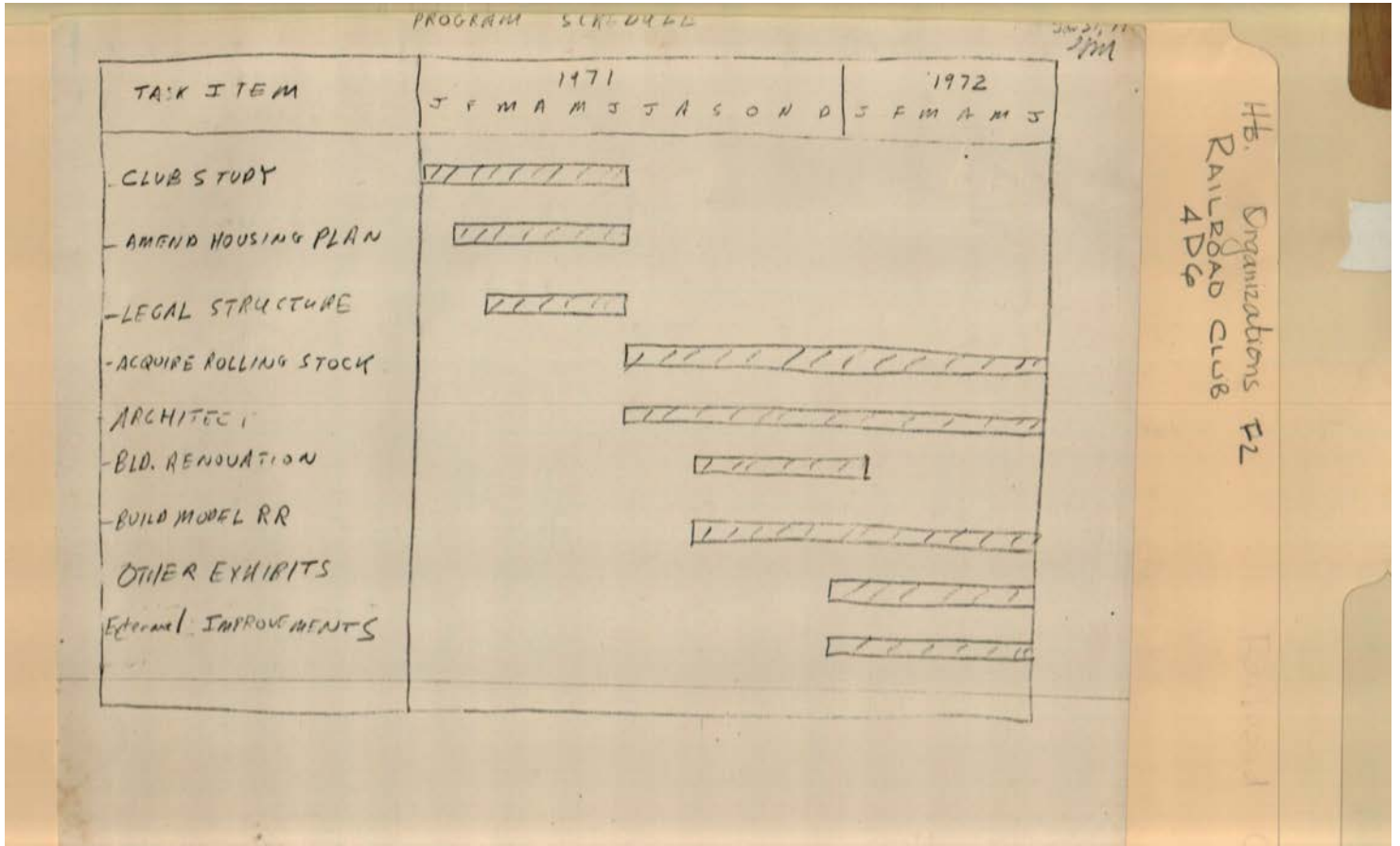
**Types:**

financials

**Dates:**

Jan 27, 1971

Huntsville Railroad Club Proposal and Materials

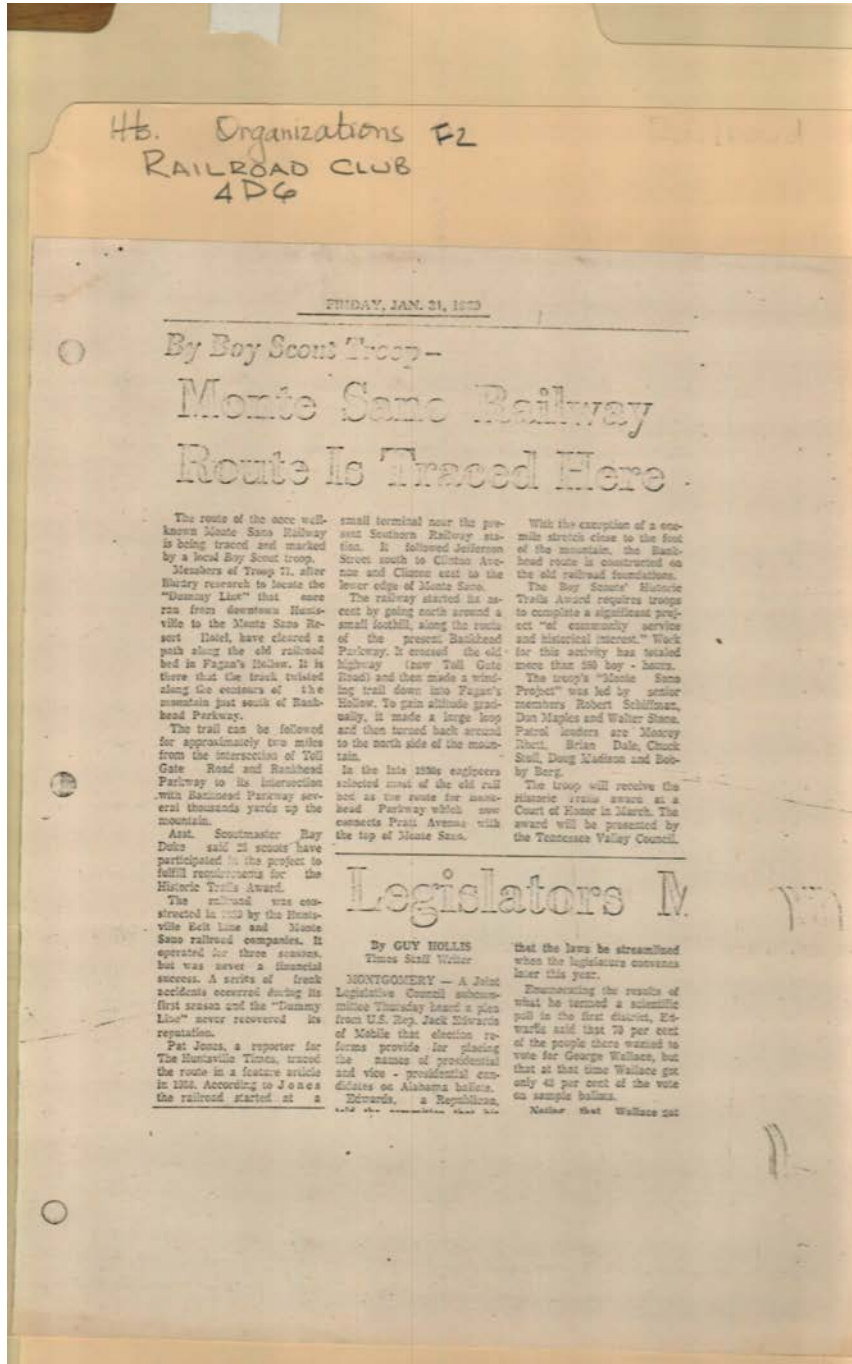


**Names:**

Huntsville Railroad  
Exhibition

**Types:**

chart



**Names:**

Berg, Bobby  
Dale, Brian  
Duke, Ray  
Edwards, Jack,  
Congressman

Hollis, Guy  
Jones, Pat  
Madison, Doug  
Maples, Don

Monte Sano Railway  
Route  
Rhett, Moorey  
Schiffman, Robert  
Stone, Walter

Stull, Chuck  
Wallace, George

**Places:**

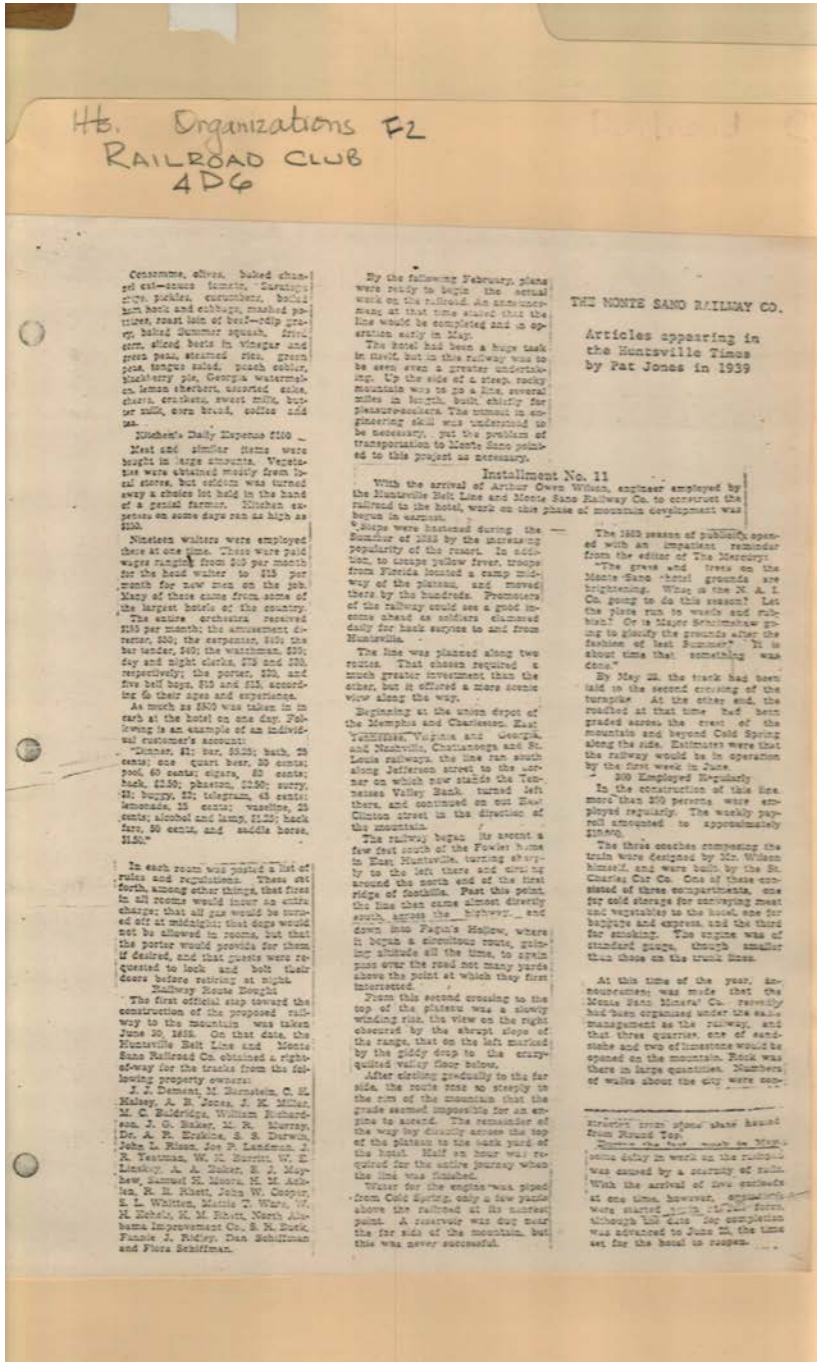
Huntsville, AL

**Types:**

newspaper

**Dates:**

Jan 21, 1969



Hb. Organizations F2  
RAILROAD CLUB  
4DG

Cucumbers, olives, baked cranberry sauce, tomatoes, green pickles, cucumbers, baked ham, neck and cabbage, mashed potatoes, roast loin of beef—old practice, baked summer squash, fried corn, sliced beets in vinegar and green peas, steamed ribs, green peas, large salad, peach cobbler, blackberry pie, Georgia watermelon, lemon sherbert, assorted cakes, glass, crackers, sweet milk, butter, nuts, corn bread, coffee and tea.

Monte's Daily Expenses \$100  
Meat and similar items were bought in large amounts. Vegetables were obtained mostly from local stores, but as soon as it turned away a chicken lot held in the back of a small farm. Monte's expenses on some days ran as high as \$100.

Monte's waiters were employed there at one time. These were paid wages ranging from \$45 per month for the head waiter, to \$15 per month for new men on the job. Many of these came from some of the largest hotels of the country. The entire restaurant received \$150 per month; the amusement department, \$50; the carpenter, \$10; the bar tender, \$5; the waitman, \$20; day and night clerks, \$15 and \$20, respectively; the porter, \$10; and five bell boys, \$10 and \$12, according to their ages and experience.

As much as \$500 was taken in in each at the hotel on one day. Following is an abstract of an individual customer's account:  
Dinner, \$1; bar, \$0.25; bath, 25 cents; one quart beer, 50 cents; pool, 60 cents; cigars, 85 cents; back, \$1.50; phanton, \$1.50; surry, \$1; puppy, \$1; telegram, 45 cents; lemonade, 15 cents; washline, 25 cents; alcohol and lamp, \$1.50; back fare, 50 cents; and saddle horse, \$1.50.

In each room was posted a list of rules and regulations. These set forth, among other things, that food in all rooms would have no extra charge; that all gas would be turned off at midnight; that dogs would not be allowed in rooms, but that the porter would provide for them if desired, and that guests were requested to lock and bolt their doors before retiring at night.

The first official step toward the construction of the proposed railway to the mountains was taken June 20, 1918. On that date, the Huntsville Belt Line and Monte Sano Railway Co. obtained a right-of-way for the tracks from the following property owners:

- J. J. Dement, M. Barnstein, C. H. Kibbey, E. B. Jones, J. K. Miller, M. C. Edgerly, William Richardson, J. G. Baker, L. R. Murray, Dr. A. T. Erskine, S. R. Durwin, John L. Rison, Joe P. Landman, J. R. Yeoman, W. H. Sherrill, W. E. Linskey, A. A. Baker, S. J. Mayhew, Samuel H. Moore, H. M. Adkins, R. H. Rhett, John W. Cooper, E. L. Whitten, Mattie T. Ware, W. H. Rhoda, H. M. Rhett, North Alabama Improvement Co., S. K. Reed, Fannie J. Ridley, Dan Schuffman and Flora Schuffman.

By the following February, plans were ready to begin the actual work on the railroad. An announcement at that time stated that the line would be completed and in operation early in May.

The road had been a huge task in itself, but in the railway was to be seen even a greater undertaking. To the side of a steep, rocky mountain was to go a line, several miles in length, built, chiefly for pleasure-seekers. The amount of engineering skill was understood to be necessary, but the problem of transportation to Monte Sano pointed to this project as necessary.

Installment No. 11  
With the arrival of Arthur Owen Wilson, engineer employed by the Huntsville Belt Line and Monte Sano Railway Co. to construct the railroad to the hotel, work on the phase of mountain development was begun in earnest.

Work was hastened during the summer of 1918 by the increasing popularity of the resort. In addition, to escape yellow fever, troops from Florida landed a camp midway of the plateau, and moved there by the hundreds. Promoters of the railway could see a good income ahead as soldiers clamored daily for back supplies to and from Huntsville.

The line was planned along two routes. That chosen required a much greater investment than the other, but it offered a more scenic view along the way.

Beginning at the union depot of the Memphis and Charleston, East Tennessee, Virginia and Georgia, and Nashville, Chattanooga and St. Louis railways, the line ran south along Jefferson street to the corner on which now stands the Tennessee Valley Bank, turned left there, and continued on out East Clinton street in the direction of the mountain.

The railway began its ascent a few feet south of the Fowler home in East Huntsville, turning sharply to the left there and curving around the north end of the first ridge of foothills. Past this point the line came almost directly south, across the highway, and down into Fagan's Hollow, where it began a steep climb, gaining altitude all the time, so steep that over the road not many yards above the point at which they first increased.

From this second crossing to the top of the plateau was a slow winding trail, the view on the right obscured by the abrupt slope of the range, that on the left marked by the giddy drop to the unrequited valley floor below.

After circling gradually to the far side, the route rose so steeply in the rim of the mountain that the grade seemed impossible for an engine to ascend. The remainder of the way by directly across the top of the plateau to the back yard of the hotel. Half an hour was required for the entire journey when the line was finished.

Water for the engine was piped down Cold Spring, only a few yards above the railroad at its lowest point. A reservoir was dug near the far side of the mountain, but this was never successful.

THE MONTE SANO RAILWAY CO.

Articles appearing in the Huntsville Times by Pat Jones in 1939

The 1939 season of public life opened with an important reminder from the editor of The Mercury: "The grave and trees on the Monte Sano hotel grounds are long-suffering. Will the N. A. I. Co. going to do this season? Let the pine run to waste and rub out? Or is Mayor Schrimshaw going to glorify the grounds after the fashion of last summer? It is about time that something was done."

By May 21, the track had been laid in the second crossing of the terrace. At the other end, had been graded across the crest of the mountain and beyond Cold Spring along the side. Estimates were that the railway would be in operation by the first week in June.

300 Employees Regularly  
In the construction of this line, more than 300 persons were employed regularly. The weekly payroll amounted to approximately \$10,000.

The three coaches comprising the train were designed by Mr. Wilson himself, and were built by the St. Charles Car Co. One of these consisted of three compartments, one for cold storage for conveying meat and vegetables to the hotel, one for baggage and apparel, and the third for smoking. The engine was of standard gauge, though smaller than those on the trunk lines.

At this time of the year, arrangements was made that the Monte Sano Hotel Co. promptly had been organized under the same management as the railway, and that three quarters, one of sandstone and two of limestone would be opened on the mountain. Rock was there in large quantities. Numbers of walks about the city were occu-

struction from above above beyond from Round Top. ...  
With the arrival of new coaches at one time, however, arrangements were started to ...  
although this date for completion was advanced to June 10, the time set for the hotel to reopen.

Names:

- Acklen, H. M.
- Baker, A. A.
- Baker, J. G.
- Baldrige, M. C.
- Bernstein, M.
- Buck, S. H.
- Burritt, W. H.
- Cooper, John W.
- Darwin, S. S.

- Dement, J. J.
- Echols, W. H.
- Erskine, A. R., Dr.
- Halsey, C. H.
- Huntsville Belt Line
- Jones, A. B.
- Landman, Joe P.
- Linskey, W. E.
- Mayhew, S. J.

- Miller, J. K.
- Monte Sano Railway Route
- Moore, Samuel H.
- Murray, M. R.
- Rhett, H. M.
- Rhett, R. B.
- Richardson, William
- Ridley, Fannie J.

- Rison, John L.
- Schiffman, Dan
- Schiffman, Flora
- Schrimshaw, Major
- Ware, Mattie T.
- Whitten, S. L.
- Wilson, Arthur Owen
- Yeatman, J. R.
- Huntsville Times

Places:

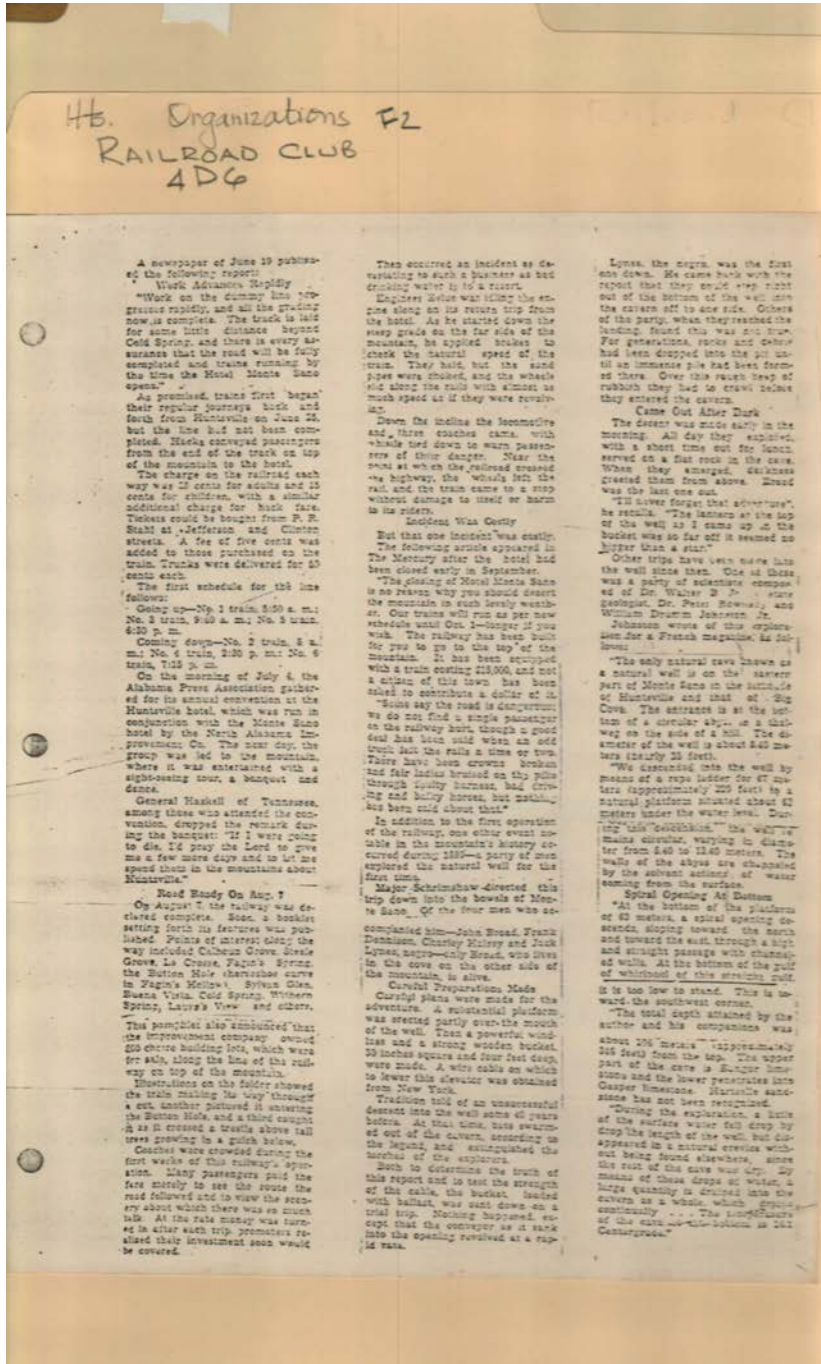
Huntsville, AL

**Types:**  
newspaper

**Dates:**  
1939

June 30, 1855

Huntsville Railroad Club Proposal and Materials



**Names:**

Belue, Engineer  
Bowman, Peter, Dr.  
Broad, John  
Dennison, Frank

Halsey, Charley  
Haskell, General  
Johnston, William  
Drumm, Jr.

Jones, Walter B., Dr.  
Lynes, Jack  
Natural Well  
Exploration

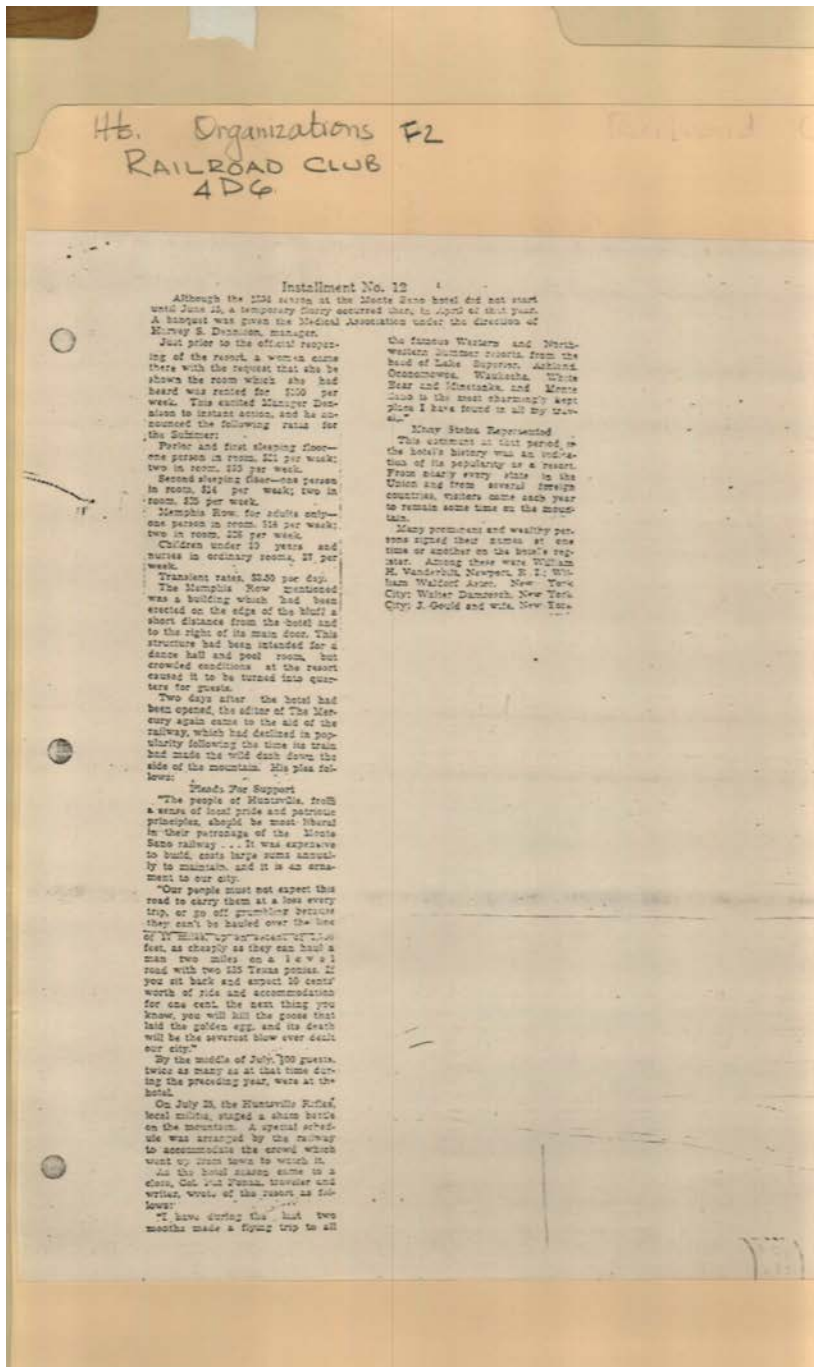
Stahl, P. R.

**Types:**

newspaper

**Dates:**

1885



**Names:**

Astor, William  
Waldorf  
Damreach, Walter

Dennison, Harvey S.  
Foman, Pat, Colonel  
Gould, J., Mr. & Mrs.

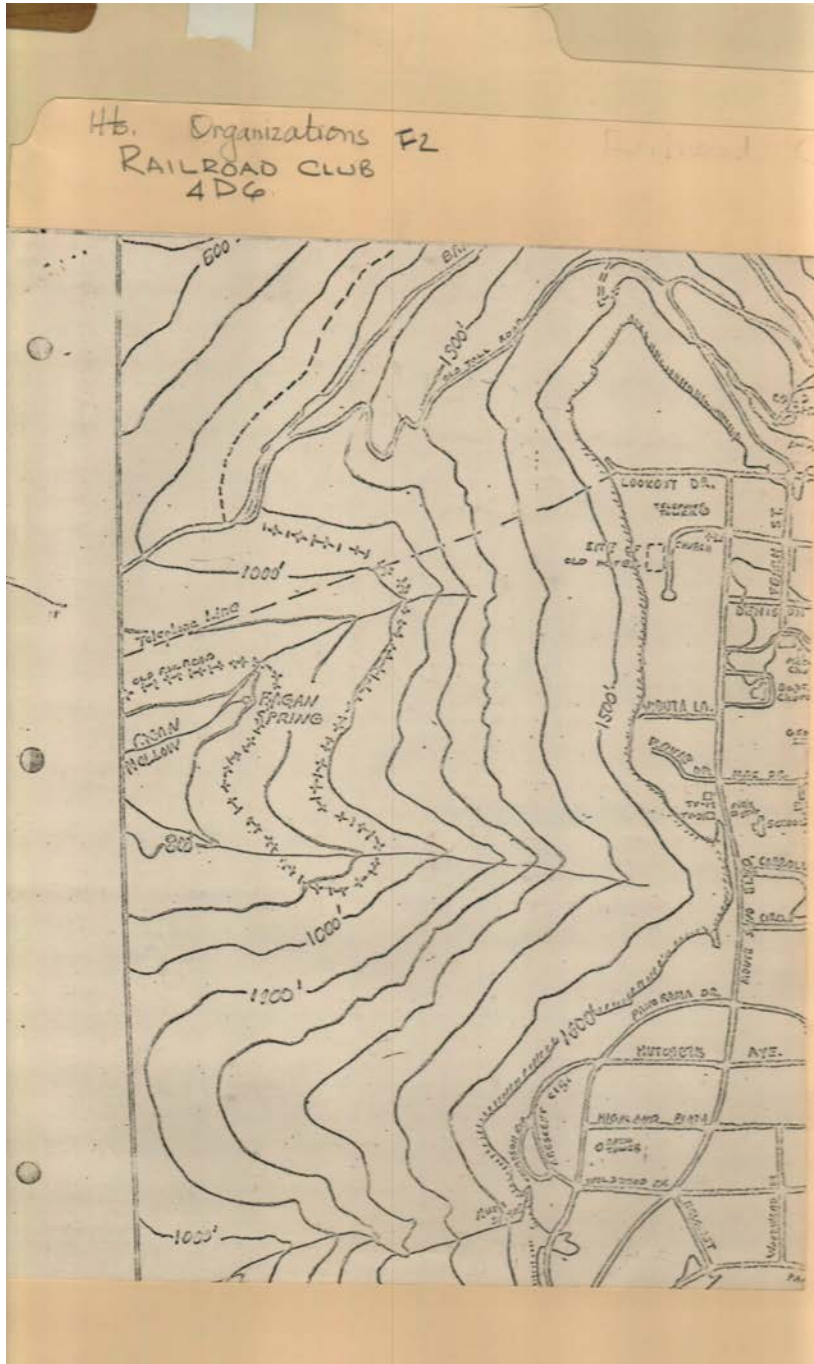
Huntsville Rifles  
Monte Sano Hotel

Vanderbilt, William  
H.

**Types:**

newspaper

Huntsville Railroad Club Proposal and Materials



**Names:**

Monte Sano Railway  
Route

**Types:**

map



**Frances Cabaniss Roberts Collection: Series 4, Subseries D, Box 6, Folder 2**  
**Huntsville Railroad Club Proposal and Materials**

[Contents](#)   [Index](#)   [About](#)

**Table of Contents**

[Image 1](#) (r04d06-02-000-0001)

[Image 2](#) (r04d06-02-000-0002)

[Image 3](#) (r04d06-02-000-0003)

[Image 4](#) (r04d06-02-000-0004)

[Image 5](#) (r04d06-02-000-0005)

[Image 6](#) (r04d06-02-000-0006)

[Image 7](#) (r04d06-02-000-0007)

[Image 8](#) (r04d06-02-000-0008)

[Image 9](#) (r04d06-02-000-0009)

[Image 10](#) (r04d06-02-000-0010)

[Image 11](#) (r04d06-02-000-0011)

[Image 12](#) (r04d06-02-000-0012)

[Image 13](#) (r04d06-02-000-0013)

[Image 14](#) (r04d06-02-000-0014)

[Image 15](#) (r04d06-02-000-0015)

[Image 16](#) (r04d06-02-000-0016)

[Image 17](#) (r04d06-02-000-0017)

[Image 18](#) (r04d06-02-000-0018)

[Image 19](#) (r04d06-02-000-0019)

[Image 20](#) (r04d06-02-000-0020)

[Image 21](#) (r04d06-02-000-0021)

[Image 22](#) (r04d06-02-000-0022)

[Image 23](#) (r04d06-02-000-0023)

[Table of Contents](#)

[Name & Place Index](#)

[About the Collection](#)

**Frances Cabaniss Roberts Collection: Series 4, Subseries D, Box 6, Folder 2**

**Huntsville Railroad Club Proposal and Materials**

[Contents](#) [Index](#) [About](#)

**Name & Place Index**

Acklen, H. M. [20](#)  
Astor, William Waldorf [22](#)  
Baker, A. A. [20](#)  
Baker, J. G. [20](#)  
Baldrige, M. C. [20](#)  
Belue, Engineer [21](#)  
Berg, Bobby [19](#)  
Bernstein, M. [20](#)  
Bowman, Peter, Dr. [21](#)  
Broad, John [21](#)  
Buck, S. H. [20](#)  
Burritt, W. H. [20](#)  
Claytor, W. Graham [9](#), [10](#)  
Cooper, John W. [20](#)  
Dale, Brian [19](#)  
Damreach, Walter [22](#)  
Daniel, Jack [10](#)  
Darwin, S. S. [20](#)  
Dement, J. J. [20](#)  
Dennison, Frank [21](#)  
Dennison, Harvey S. [22](#)  
Dudley, Hugh J. [1](#)  
Duke, Ray [19](#)  
Echols, W. H. [20](#)  
Edwards, Jack, Congressman [19](#)  
Erskine, A. R., Dr. [20](#)  
Foman, Pat, Colonel [22](#)  
Gould, J., Mr. & Mrs. [22](#)  
Halsey, C. H. [20](#)  
Halsey, Charley [21](#)  
Haskell, General [21](#)  
Hollis, Guy [19](#)  
Huntsville Belt Line [20](#)  
Huntsville Depot Area [12](#), [13](#), [14](#)  
Huntsville Railroad Exhibition [15](#), [16](#), [17](#), [18](#)  
Huntsville Rifles [22](#)  
Huntsville Times [20](#)  
Huntsville, AL [1](#), [15](#), [16](#), [17](#), [19](#), [20](#)  
Johnston, William Drumm, Jr. [21](#)  
Jones, A. B. [20](#)  
Jones, Pat [19](#)  
Jones, Walter B., Dr. [21](#)  
Landman, Joe P. [20](#)  
Linskey, W. E. [20](#)  
Lynes, Jack [21](#)  
Madison, Doug [19](#)  
Maples, Don [19](#)  
Mayhew, S. J. [20](#)  
McCanless, George F., Jr. [1](#)  
Miller, J. K. [20](#)  
Monte Sano Hotel [22](#)  
Monte Sano Railway Route [19](#), [20](#), [23](#)  
Moore, Samuel H. [20](#)  
Murray, M. R. [20](#)  
Natural Well Exploration [21](#)  
North Alabama Railroad Club [1](#)  
Rhett, H. M. [20](#)  
Rhett, Moorey [19](#)  
Rhett, R. B. [20](#)  
Richardson, William [20](#)  
Ridley, Fannie J. [20](#)  
Rison, John L. [20](#)  
Schiffman, Dan [20](#)  
Schiffman, Flora [20](#)  
Schiffman, Robert [19](#)  
Schrimshaw, Major [20](#)  
Stahl, P. R. [21](#)  
Stone, Walter [19](#)  
Stull, Chuck [19](#)  
Vanderbilt, William H. [22](#)  
Wallace, George [19](#)  
Ware, Mattie T. [20](#)  
Washington, DC [10](#)  
Whitten, S. L. [20](#)  
Wilson, Arthur Owen [20](#)  
Yeatman, J. R. [20](#)

# Frances Cabaniss Roberts Collection

**Preferred Citation:** Frances Cabaniss Roberts Collection, Archives and Special Collections, M. Louis Salmon Library, University of Alabama in Huntsville, Huntsville, AL.

**Collection Scope and Content:** The Collection of 114 Linear ft. includes a total of 156 Archival Boxes. The Frances Cabaniss Roberts collection covers the historical records of the Cabaniss Roberts family. This collection contains extensive correspondence records of the Cabaniss Roberts family circa 1830 to 1930.

**Archives/Special Collections Access Restrictions:** None

**Conditions Governing Use:** This material may be protected under U. S. Copyright Law (Title 17, U.S. Code) which governs the making of photocopies or reproductions of copyrighted materials. You may use the digitized material for private study, scholarship, or research. Though the University of Alabama in Huntsville Archives and Special Collections has physical ownership of the material in its collections, in some cases we may not own the copyright to the material. It is the patron's obligation to determine and satisfy copyright restrictions when publishing or otherwise distributing materials found in our collections.

**Provenance:** Gift of Johanna Shields on October 28, 2006.



THE UNIVERSITY OF  
ALABAMA IN HUNTSVILLE

**The UAH Archives and Special Collections  
M. Louis Salmon Library**