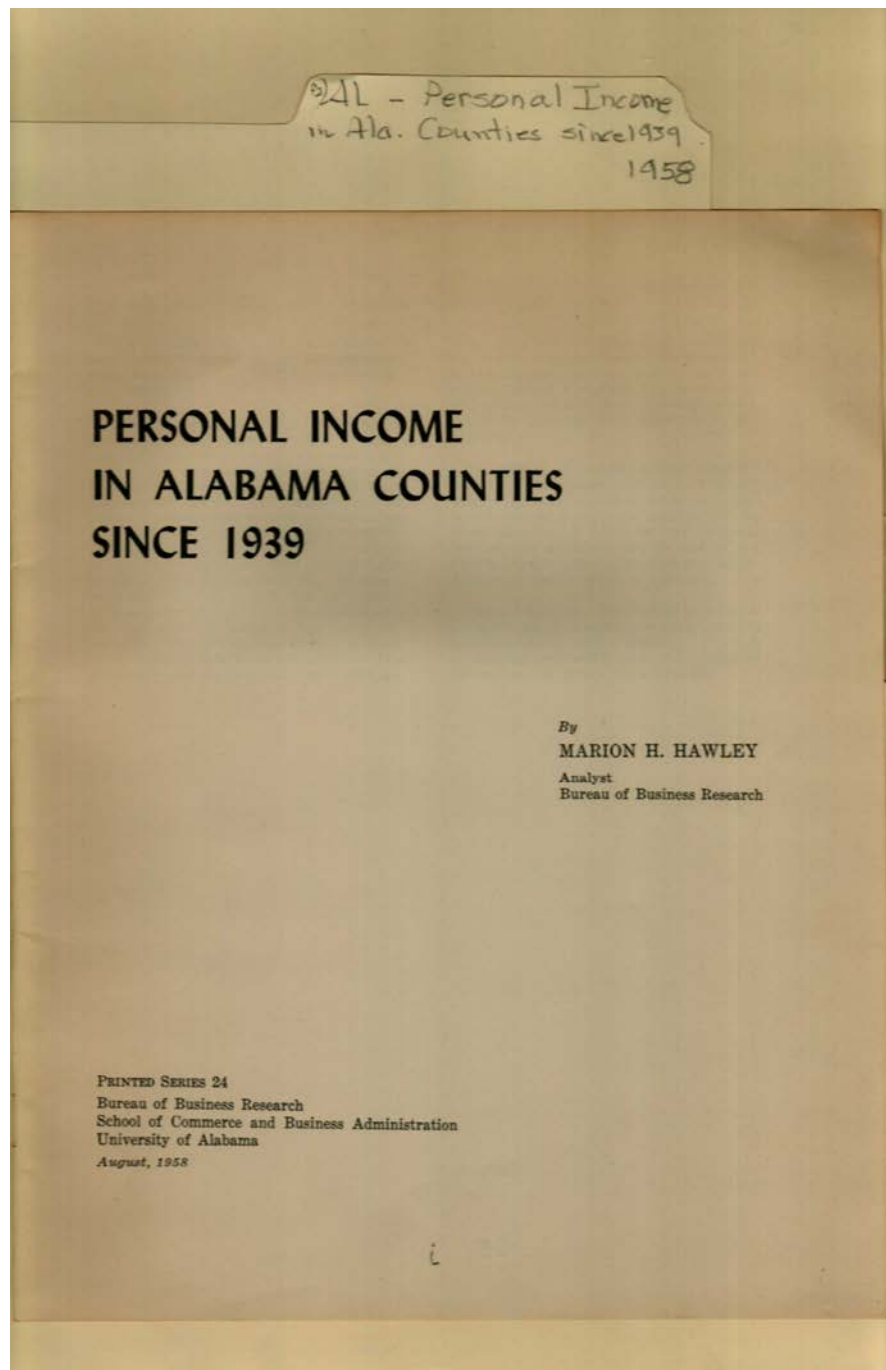


Frances Cabaniss Roberts Collection: Series 4, Subseries C, Box 1, Folder 2

"Personal Income in Alabama Counties Since 1939", 1958

Image 1 r04c01-02-000-0075 [Contents](#) [Index](#) [About](#)



Names:

Hawley, Marion H.

Personal Income by
Alabama Counties

Places:

University of
Alabama

Types:

booklet

Dates:

Aug 1958

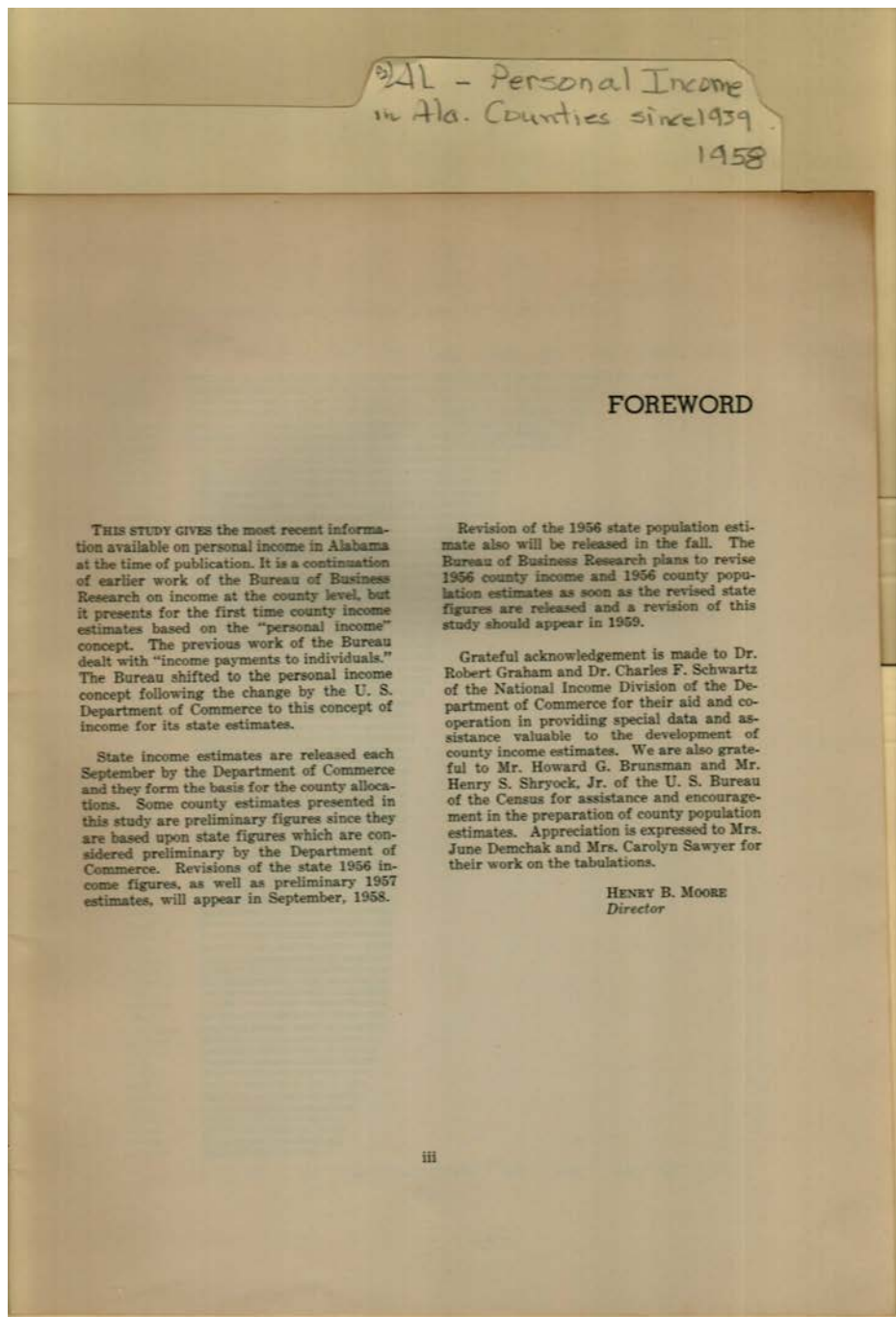
Frances Cabaniss Roberts Collection: Series 4, Subseries C, Box 1, Folder 2

"Personal Income in Alabama Counties Since 1939", 1958

Image 2 r04c01-02-000-0076 [Contents](#) [Index](#) [About](#)



Types:
booklet



Names:

Brunsmann, Howard
G.
Demchak, June, Mrs.

Graham, Robert, Dr.
Moore, Henry B.

Sawyer, Carolyn,
Mrs.

Schwartz, Charles F.,
Dr.
Shryock, Henry S., Jr.

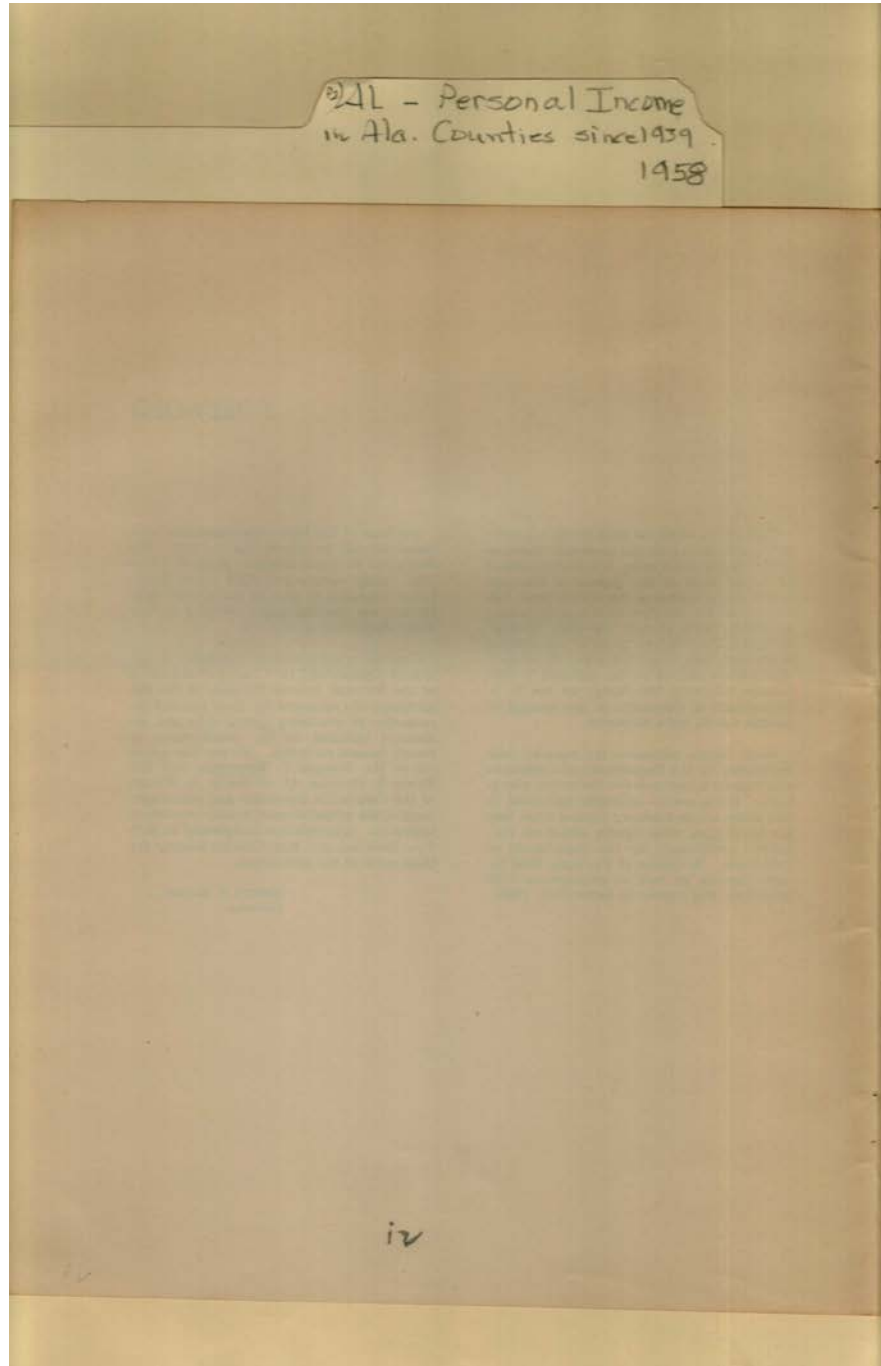
Types:

booklet

Frances Cabaniss Roberts Collection: Series 4, Subseries C, Box 1, Folder 2

"Personal Income in Alabama Counties Since 1939", 1958

Image 4 r04c01-02-000-0078 [Contents](#) [Index](#) [About](#)



Types:
booklet

241 - Personal Income
in Ala. Counties since 1939
1958

TABLE OF CONTENTS	Page
Foreword	iii
Introduction	1
Uses of the Data	2
Limitations	2
I. Personal Income in Alabama	4
Total Income	4
Real Income	4
Per Capita Income	5
Per Capita Real Income	6
Major Types of Income	6
Industrial Sources of Income	6
II. Personal Income in the Counties of Alabama	8
Total Income	8
Major Types of Income	8
Distribution of Income	9
Per Capita Income	9
III. Alabama County Population Estimates	26

v

Names:

Personal Income by
Alabama Counties

Types:

booklet

Frances Cabaniss Roberts Collection: Series 4, Subseries C, Box 1, Folder 2

"Personal Income in Alabama Counties Since 1939", 1958

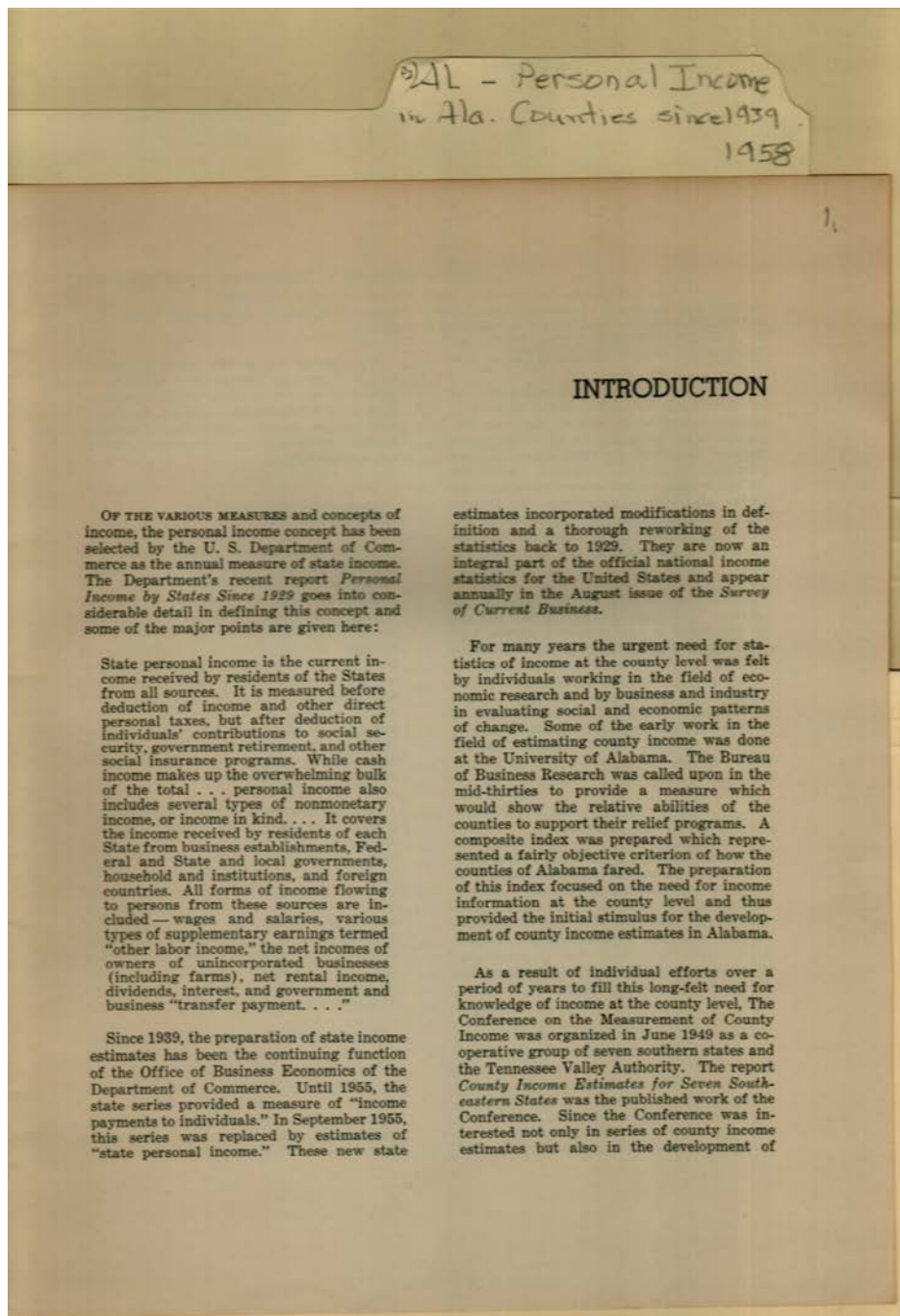
Image 6 r04c01-02-000-0080 [Contents](#) [Index](#) [About](#)



Types:
booklet

Frances Cabaniss Roberts Collection: Series 4, Subseries C, Box 1, Folder 2
"Personal Income in Alabama Counties Since 1939", 1958

Image 7 r04c01-02-000-0081 [Contents](#) [Index](#) [About](#)

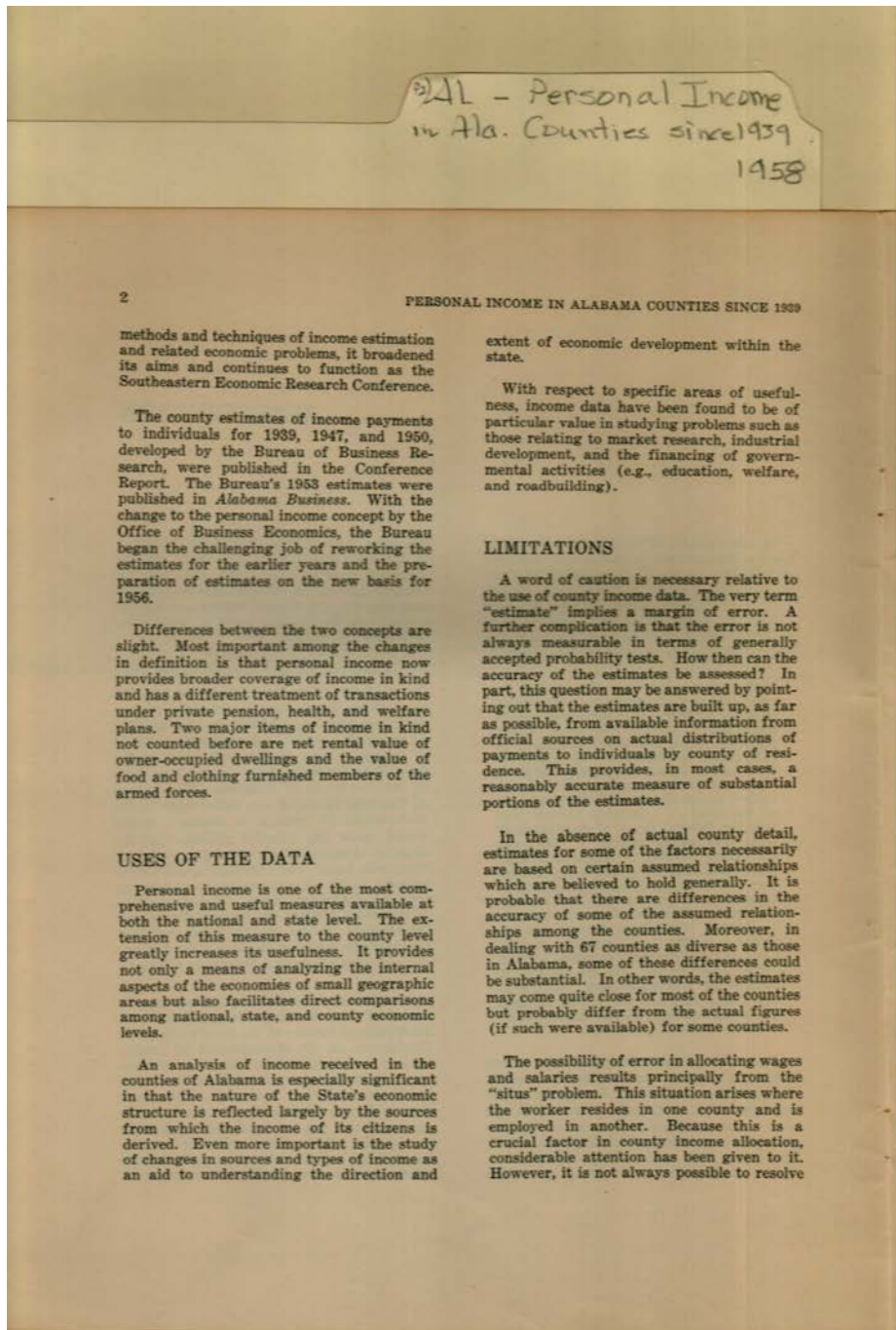


Names:

Personal Income
Concept

Types:

booklet

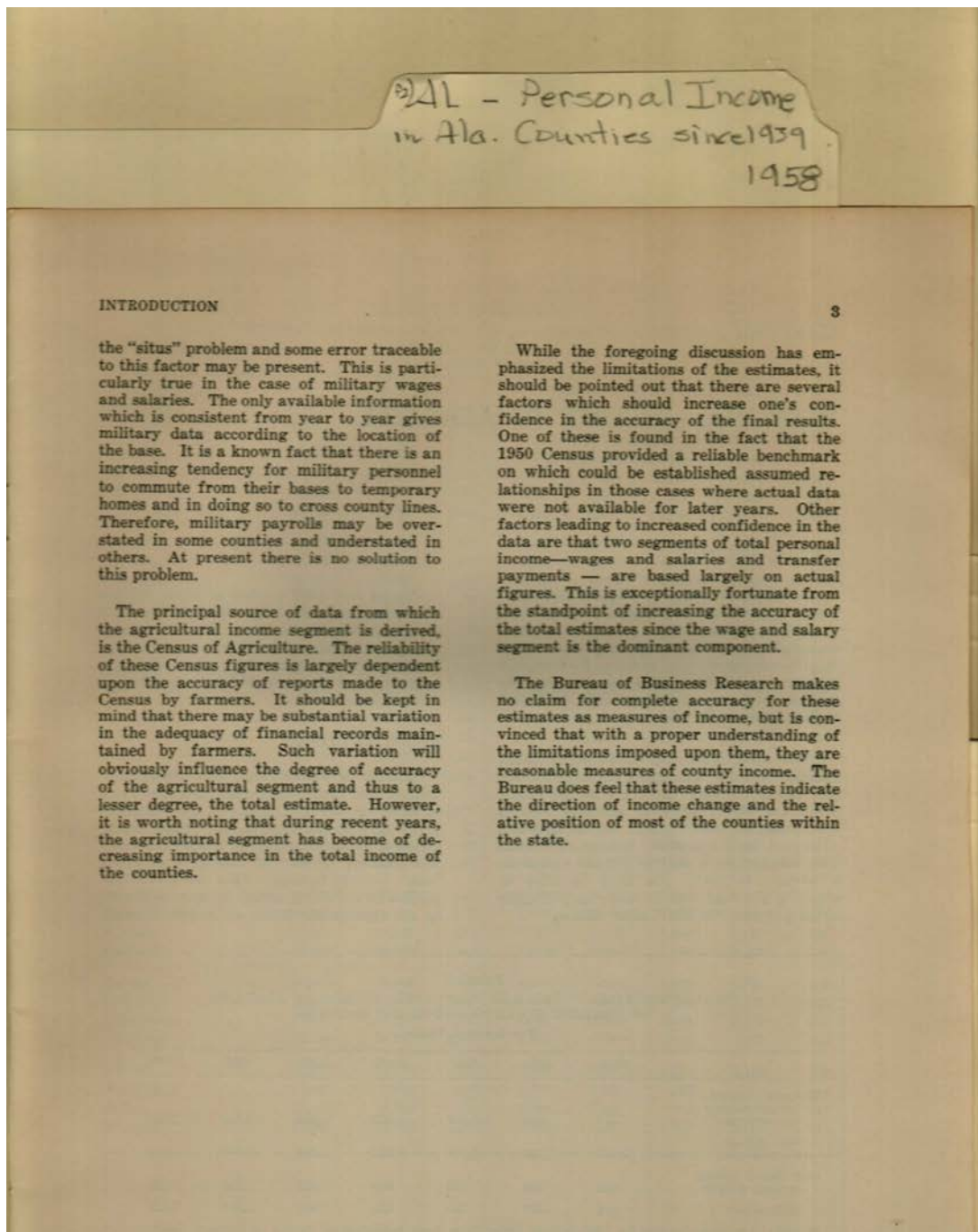


Names:

Data Uses

Types:

booklet



Names:

Accuracy Confidence

Types:

booklet

3) AL - Personal Income
in Ala. Counties since 1939
1958

CHAPTER I

PERSONAL INCOME IN ALABAMA

TOTAL INCOME

AS EVIDENCED BY the comprehensive personal income measure, economic conditions in 1956 in Alabama were generally the best on record. An all-time high of \$3,854 million in personal income was received by Alabama residents in 1956. This total was \$168 million above the previous high of \$3,686 million received in 1955.

In its climb from depression depth (\$427 million) in 1932, Alabama's personal income has failed on only three occasions (1938, 1949, and 1954) to move annually beyond the preceeding year's mark. On the first two occasions, 1938 and 1949, Alabama's decline was matched by a decline for the nation as a whole. However, the drop in 1954 of almost 3 per cent was in contrast to a gain of 0.6 per cent for the United States.

During the 1930's, total personal income of Alabamians accounted for less than one per cent of the U. S. total. But in the years since the beginning of World War II, Alabama residents obtained a proportionately larger part of the national total—from about 1.2 to 1.3 per cent.

REAL INCOME

It must be remembered that changes in income over time reflect changes in the value of money as well as changes in the volume of goods and services produced. Therefore to measure actual changes in Alabama's economic status, it will be useful to compute "real" income figures. This can be accomplished by deflating actual income estimates by an appropriate index of prices, thereby

TABLE I.
TOTAL PERSONAL INCOME AND PER CAPITA INCOME IN ALABAMA
IN CURRENT DOLLARS AND IN 1947 DOLLARS
For Selected Years

	1929	1939	1947	1950	1953	1955	1956
Personal income current dollars (in millions)	856	704	2,337	2,609	3,344	3,686	3,854
1947 dollars (in millions)	1,157	1,193	2,337	2,532	2,834	3,097	3,212
Per capita income current dollars	324	250	794	870	1,089	1,195	1,235
1947 dollars	438	424	794	829	923	1,004	1,029

NOTE: Per capita incomes for 1950 to 1956 differ from those published in *Survey of Current Business* due to revisions of population estimates.

Names:

Total & Real Income

Types:

booklet

241 - Personal Income
in Ala. Counties since 1939
1958

PERSONAL INCOME IN ALABAMA

removing, as far as possible, the effects of changes in the value of money. The real or deflated figures, expressed in dollars of constant purchasing power, are more meaningful in revealing changes in the average Alabamian's ability to buy goods and services, and this is the key to his standard of living.

Unfortunately, there is a lack of comprehensive information on differences in consumer price levels from state to state. However, considerable aid in overcoming this problem is afforded by special state price indexes compiled by Abner Hurwitz and Carlyle P. Stallings of the U. S. Department of Labor, Bureau of Labor Statistics. In a paper, "Interregional Differentials in Per Capita Real Income Change," prepared for the June 1955 regional income meeting sponsored by the Conference on Research in Income and Wealth of the National Bureau of Economic Research, Hurwitz and Stallings presented annual price indexes for each state for the years 1929-1953. For the last six or eight years of that period, their index for Alabama differed relatively little from the national average. On the basis of this evidence, the Hurwitz and Stallings index for

Alabama was extended from 1953 through 1956 by using the U. S. Consumer Price Index.

It has already been pointed out that total personal income in Alabama in terms of current dollars in 1956 was more than four times the 1929 income. However, after adjustments have been made to eliminate as far as possible changes in the value of money, real income in 1956 in Alabama was just under three times that of 1929. Personal income in Alabama in 1956 was at a record high in terms of dollars of either current or constant value.

PER CAPITA INCOME

Historically, Alabama and other Southern states have been low income areas. Per capita personal income in 1956 was lower than Alabama's \$1,235 in only three states—South Carolina, Arkansas, and Mississippi. While Alabama's per capita income has been consistently lower than that of the nation, it has often climbed at a rate faster than that for the nation as a whole. In 1932, Ala-

TABLE II.
MAJOR TYPES OF PERSONAL INCOME IN ALABAMA
AND THE UNITED STATES, 1929 AND 1956

Types of personal income	1929		1956	
	Total personal income in Alabama (\$ millions)	Per cent of total personal income, Alabama	Total personal income in Alabama (\$ millions)	Per cent of total personal income, United States
Wage and salary disbursements	470	54.9	2,549	68.7
Other labor income	5	0.6	91	2.4
Proprietors' income				
Farm	174	20.3	216	5.6
Nonfarm	81	9.5	367	9.5
Property income	112	13.1	329	8.5
Transfer payments	15	1.7	280	7.3
Less: personal contributions for social insurance	1	0.1	77	2.0
Total personal income	856	100.0	3,854	100.0

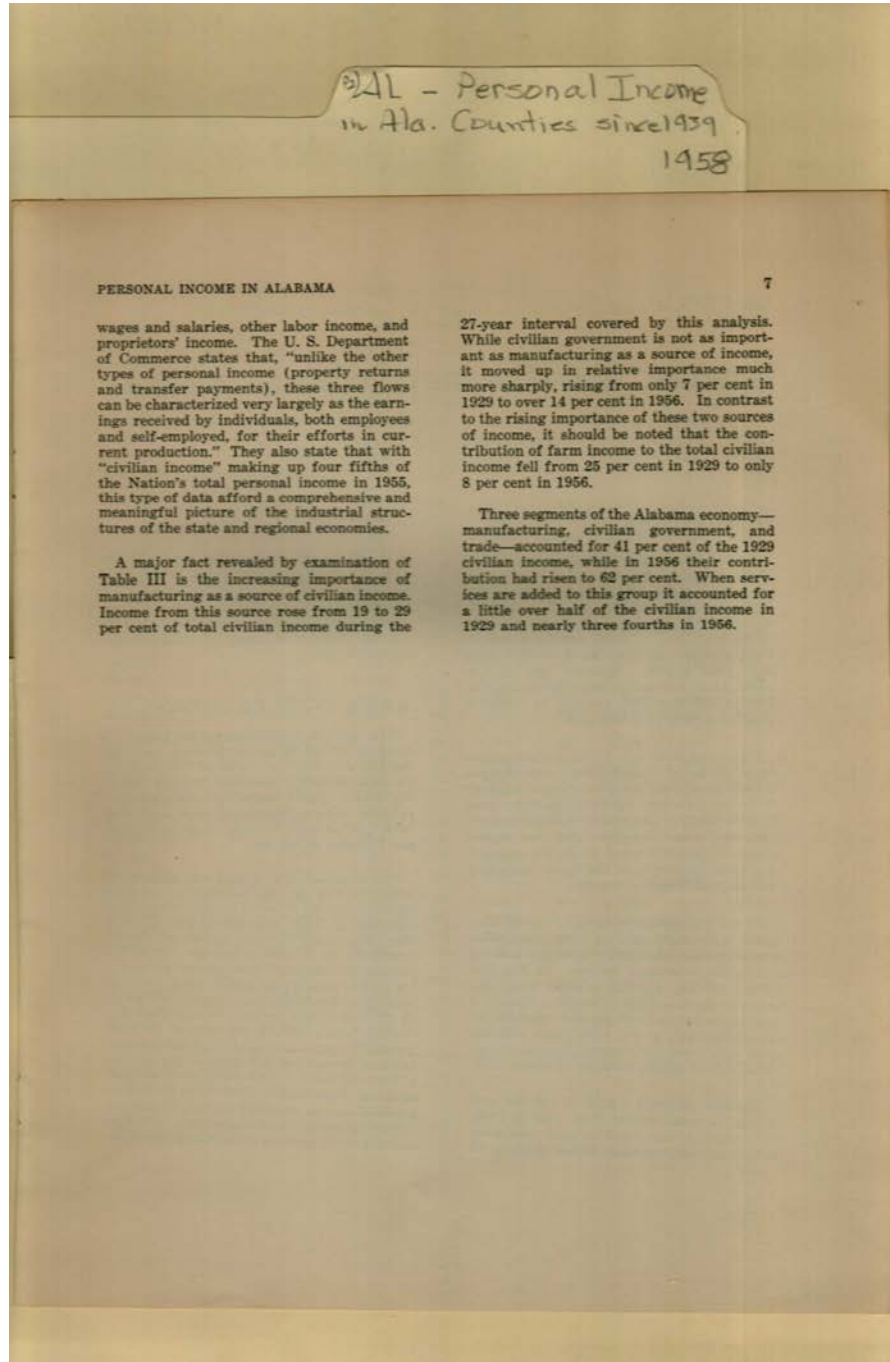
SOURCE: U. S. Department of Commerce, *Personal Income by States Since 1929 and Survey of Current Business*, August 1957.

Names:

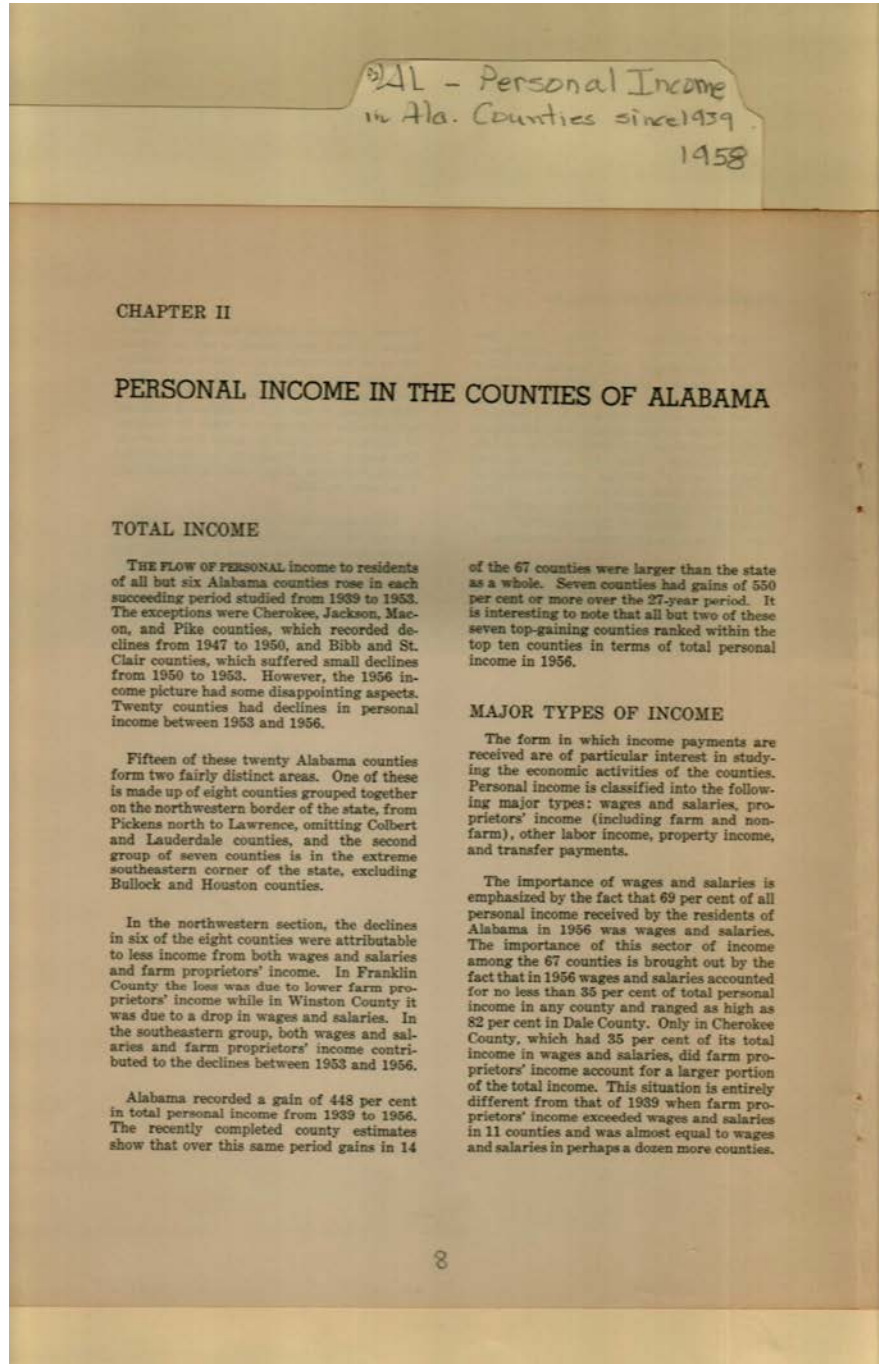
Per Capita Income

Types:

booklet



Types:
booklet



Names:

Income, Major Types

Types:

booklet

AL - Personal Income
in Ala. Counties since 1939
1958

PERSONAL INCOME IN THE COUNTIES OF ALABAMA

DISTRIBUTION OF INCOME

The distribution of personal income among Alabama counties sheds light on the differences in the economic well-being of the residents of the counties and reflects the part the county plays in the economic activity of the state. A comparison of income distribution among counties over time also reveals changes in patterns of area concentration.

The bulk of total income received by residents of Alabama is found in a few counties. The top-ranking seven counties, in terms of total personal income, had as a group over 50 per cent of total state income in each of the five periods studied. These percentages ranged from 54.5 per cent in 1939 to 59.5 per cent in 1956 (see Table IV).

Jefferson County with 2 per cent of the land area, 19 per cent of the state's population, and almost 29 per cent of the state's personal income, had by far the largest single share of the state's income in 1956. Three counties—Jefferson, Montgomery, and Mobile—together accounted for over 40 per cent of the state's personal income in each of the five periods studied. As a matter of fact, their percentage of the total rose to 46.3 per cent in 1956.

TABLE IV.
CHARACTERISTICS OF THE SEVEN TOP-RANKING
COUNTIES IN ALABAMA IN 1956

County	Total personal income		Per cent of state's population	Per cent of land area
	Rank	Per cent		
Jefferson . . .	1	28.6	19.2	2.2
Mobile	2	11.4	9.0	2.4
Montgomery . .	3	6.3	5.2	1.5
Etowah	4	3.9	3.1	1.1
Calhoun	5	3.5	2.9	1.2
Tuscaloosa . . .	6	3.2	3.2	2.6
Madison	7	2.6	2.7	1.6
Seven-county total		59.5	45.3	12.6

An outstanding change in the distribution of personal income among the counties was noted in 1953. The relative position of Dale County rose from 0.4 per cent of the state's total personal income in 1939 to 1.2 per cent in 1953. The reactivation of Camp Rucker in Dale County accounted for this increase. This county ranked 54th in 1939, 45th in 1950, and 9th in 1953. However, from 1953 to 1956, personal income in Dale County declined and it dropped to 17th place.

PER CAPITA INCOME

Increases in total income may simply reflect increasing population and not higher incomes for individuals. The effect of changes in population may be eliminated by reducing total income to a per capita basis. Per capita personal income of each county has been computed by dividing the income by estimates of the population at the midyear, made by the Bureau of Business Research. These estimates appear in Chapter III.

It is hard to generalize on per capita incomes in Alabama and cover the entire 67 counties when per capita personal incomes ranged in 1956 from \$497 in Lowndes County to \$1,847 in Jefferson County. In 1956, only seven counties had per capita incomes as great or greater than the state average. In none of the Alabama counties was per capita income as high as that for the nation as a whole.

Per capita personal income for the state as a whole rose 394 per cent from 1939 to 1956. Thirty-four counties had increases over this period as great or greater than the state as a whole. Dale County recorded the largest increase over the 27-year span (1,031 per cent). The next largest increase was that of 636 per cent in Russell County. The smallest increase over this period was 282 per cent in Bibb County.

Names:

Income, Distribution

Types:

booklet

"Personal Income in Alabama Counties Since 1939", 1958

Image 15 r04c01-02-000-0089 [Contents](#) [Index](#) [About](#)

2) AL - Personal Income
in Ala. Counties since 1939
1958

TABLE V.
ESTIMATED PERSONAL INCOME IN ALABAMA COUNTIES
Major Types, 1939
(In thousands of dollars)

State and County	Total personal income	Major types of personal income						Less: Personal contributions for social insurance
		Wage & salary disbursements	Other labor income	Proprietors' income		Property income	Transfer payments	
				Farm	Nonfarm			
Alabama	704,000	441,000	5,000	95,000	72,000	73,000	25,000	7,000
Aufauga	3,967	1,436	17	1,010	316	173	138	23
Baldwin	8,275	4,184	47	2,158	1,034	646	245	39
Barbour	5,219	2,629	31	1,404	589	414	195	43
Bibb	3,517	2,228	23	467	464	209	166	40
Blount	4,579	1,417	16	2,272	483	254	165	28
Bullock	3,026	1,464	13	864	297	287	118	17
Butler	5,104	2,662	30	1,273	530	446	205	42
Calhoun	19,549	13,659	196	1,286	1,935	1,816	761	204
Chambers	19,055	7,591	119	1,157	666	340	320	138
Cherokee	3,451	930	10	1,365	234	208	128	14
Chilton	4,122	1,695	18	1,268	528	421	200	28
Choctaw	2,413	1,074	13	823	249	146	125	17
Clarke	4,251	2,203	27	794	625	436	199	33
Clay	2,233	766	8	857	307	197	110	12
Cleburne	1,758	658	10	585	260	158	98	11
Coffee	5,046	1,983	21	1,918	616	352	187	31
Colbert	11,367	8,345	72	1,196	843	581	296	66
Conecuh	3,208	1,400	15	1,074	246	240	154	21
Coosa	1,685	774	15	513	194	114	88	13
Covington	3,704	5,090	59	1,614	901	807	318	85
Crenshaw	3,186	1,219	14	1,198	389	237	146	17
Cullman	8,530	2,623	27	3,950	944	734	288	46
Dale	3,088	1,239	14	1,113	400	201	139	18
Dallas	10,813	6,088	61	1,563	1,323	1,438	433	93
DeKalb	7,245	2,281	27	3,662	623	454	240	42
Elmore	5,483	2,413	36	1,693	618	500	256	36
Escambia	6,244	3,680	36	897	738	685	263	55
Etowah	23,925	17,414	240	1,564	2,194	2,108	721	316
Fayette	3,608	1,692	18	1,009	430	348	138	27
Franklin	4,076	1,910	18	974	621	363	222	32
Geneva	4,371	1,682	19	1,528	506	372	191	27
Greene	1,998	840	8	656	188	212	108	14
Hale	2,628	1,105	10	956	220	206	148	17
Henry	3,215	1,140	10	1,365	344	242	129	15
Houston	9,916	4,727	50	2,043	1,469	1,369	333	75

Names:

Income, Personal
Estimates

Types:

list

Dates:

1939

3) AL - Personal Income
in Ala. Counties since 1939
1958

TABLE V. (Continued)
ESTIMATED PERSONAL INCOME IN ALABAMA COUNTIES
MAJOR TYPES, 1939
(In thousands of dollars)

State and County	Total personal income	Wage & salary disbursements	Other labor income	Major types of personal income				Less: Personal contributions for social insurance
				Farm	Nonfarm	Property income	Transfer payments	
Jackson	6,958	5,248	34	2,185	767	492	276	44
Jefferson	206,487	155,832	1,768	1,508	19,433	23,239	6,296	2,679
Lamar	2,517	835	9	1,077	283	207	119	13
Lauderdale	8,790	4,653	46	1,533	1,189	1,071	367	69
Lawrence	3,566	1,249	9	1,716	272	179	156	15
Lee	8,450	5,279	61	1,128	814	959	275	66
Limestone	5,719	1,845	15	2,625	639	407	213	25
Lowndes	2,610	1,019	10	1,118	213	153	112	15
Macon	5,196	2,792	24	1,477	405	345	172	19
Madison	14,311	7,990	85	3,015	1,381	1,474	480	114
Marengo	4,681	2,167	24	1,275	598	454	227	24
Marion	3,850	1,807	19	1,099	482	279	195	31
Marshall	8,054	2,934	32	3,146	962	766	263	49
Mobile	55,743	38,215	410	1,192	5,750	9,026	1,786	636
Monroe	4,199	1,921	23	1,271	474	365	174	29
Montgomery	43,963	30,865	304	1,343	4,254	5,631	1,358	392
Morgan	12,574	7,010	79	2,136	1,435	1,606	422	114
Perry	2,980	1,439	14	809	305	273	159	19
Pickens	3,739	1,548	20	1,377	366	287	169	28
Pike	5,981	2,487	26	1,667	761	870	207	37
Randolph	3,918	1,811	23	1,171	491	278	174	30
Russell	4,822	2,353	56	878	661	415	197	38
St. Clair	5,588	3,450	41	1,088	490	361	223	65
Shelby	5,799	3,778	41	872	572	339	258	61
Sumter	3,801	1,879	19	1,106	357	297	172	29
Talladega	11,016	7,285	99	1,337	989	972	456	122
Tallapoosa	8,838	5,906	83	1,262	777	642	294	106
Tuscaloosa	20,868	14,038	148	1,856	2,048	2,250	716	188
Walker	13,161	9,124	84	1,126	1,411	917	635	136
Washington	2,443	1,396	16	322	306	115	108	19
Wilcox	3,128	1,410	16	1,050	351	239	155	23
Winston	2,605	1,198	12	795	321	174	124	19

Names:

Income, Personal
Estimates

Types:

list

Dates:

1939

"Personal Income in Alabama Counties Since 1939", 1958

Image 17 r04c01-02-000-0091 [Contents](#) [Index](#) [About](#)

241 - Personal Income
in Ala. Counties since 1939
1958

TABLE VI.
ESTIMATED PERSONAL INCOME IN ALABAMA COUNTIES
Major Types, 1947
(In thousands of dollars)

State and County	Total personal income	Major types of personal income					Low: Personal contributions for social insurance	
		Wage & salary disbursements	Other labor income	Proprietors' income		Property income		Transfer payments
				Farm	Nonfarm			
Alabama	2,337,000	1,417,000	23,000	311,000	234,000	176,000	204,000	28,000
Autauga	8,816	4,402	79	2,285	706	392	1,035	93
Baldwin	25,959	13,250	209	5,577	3,208	1,653	2,154	172
Barbour	18,167	7,192	128	5,974	2,029	1,373	1,615	142
Bibb	9,642	5,525	81	1,512	856	577	1,212	121
Blount	15,161	3,827	57	7,078	1,528	772	1,836	97
Bullock	7,750	2,657	42	2,864	743	609	896	61
Butler	14,847	7,597	132	2,830	1,612	1,041	1,804	169
Calhoun	66,181	46,872	840	2,662	6,231	4,772	5,880	876
Chambers	32,210	23,156	308	3,285	1,830	1,428	2,565	562
Cherokee	10,635	2,474	49	5,554	870	459	1,299	61
Chilton	13,652	5,261	91	4,074	1,468	1,079	1,797	118
Choctaw	7,752	3,445	65	2,149	715	413	1,051	86
Clarke	14,453	7,477	133	2,747	1,705	1,015	1,525	149
Clay	7,642	2,457	43	2,534	914	585	1,172	63
Cleburne	5,754	2,014	36	2,274	416	301	755	42
Coffee	20,778	6,806	122	8,570	2,153	1,049	2,219	141
Colbert	40,982	28,433	444	4,020	3,428	1,961	3,254	588
Conneh	9,547	4,051	69	2,347	1,069	632	1,262	83
Coosa	5,772	2,885	57	1,305	643	244	698	60
Covington	26,339	12,585	222	6,071	2,941	1,981	2,818	279
Crenshaw	9,720	3,051	48	3,822	927	613	1,344	65
Cullman	29,192	7,985	124	13,198	2,524	1,796	3,703	198
Dale	12,154	4,346	71	4,209	1,436	737	1,451	96
Dallas	35,530	20,220	290	6,284	5,442	3,199	3,070	475
DeKalb	25,332	6,889	119	11,673	2,353	1,267	3,197	166
Elmore	19,120	8,551	153	5,522	1,798	1,233	2,029	166
Escambia	18,790	9,939	168	2,549	2,495	1,078	2,181	206
Etowah	82,348	59,029	1,172	3,827	8,878	4,766	5,927	1,242
Fayette	11,491	4,112	70	3,544	1,243	1,043	1,587	108
Franklin	14,882	5,417	89	4,397	1,701	961	2,443	126
Geneva	16,785	5,557	96	6,965	1,463	963	1,868	127
Greene	6,487	2,184	32	2,384	723	431	785	52
Hale	8,484	2,769	39	3,276	706	547	1,214	67
Henry	11,925	2,946	40	6,422	913	611	1,362	68
Houston	37,203	16,460	248	9,838	4,440	2,898	3,635	316

Names:

Income, Personal
Estimates

Types:

list

Dates:

1947

311 - Personal Income
in Ala. Counties since 1939
1958

TABLE VI. (Continued)
ESTIMATED PERSONAL INCOME IN ALABAMA COUNTIES
Major Types, 1947
(In thousands of dollars)

State and County	Total personal income	Major types of personal income						Less: Personal contributions for social insurance
		Wage & salary disbursements	Other labor income	Proprietors' income		Transfer payments		
				Farm	Nonfarm	Property income		
Jackson	21,838	8,681	130	7,796	1,903	1,240	2,881	163
Jefferson	618,507	460,239	7,820	4,128	64,635	54,589	36,676	9,100
Lamar	8,484	1,907	30	3,887	862	669	1,391	62
Lauderdale	31,611	15,396	233	6,059	3,888	2,623	3,664	272
Lawrence	13,370	3,234	42	7,341	806	473	1,538	64
Lee	31,580	19,048	322	3,338	2,785	2,329	3,847	289
Limestone	19,784	5,136	69	9,150	1,634	1,212	2,692	109
Lowndes	6,696	2,178	31	2,728	485	475	853	55
Macon	17,862	8,790	118	4,748	1,270	1,025	2,084	83
Madison	31,731	27,287	448	10,007	4,369	4,413	5,747	520
Marengo	14,724	5,947	95	4,542	1,488	1,180	1,598	126
Marion	15,025	5,719	89	4,371	1,911	857	2,220	142
Marshall	28,466	9,553	156	9,434	3,285	2,133	4,139	234
Mobile	229,072	170,914	2,571	3,507	22,245	20,235	12,754	3,154
Monroe	12,688	5,741	104	3,324	1,358	826	1,464	129
Montgomery	147,132	107,782	1,446	4,429	13,638	12,487	9,425	2,075
Morgan	39,204	19,792	332	7,093	4,769	3,336	4,328	446
Perry	8,929	3,479	54	3,114	763	634	952	76
Pickens	12,387	4,178	71	4,796	1,057	922	1,472	109
Pike	21,295	7,941	119	7,453	2,020	1,838	2,070	146
Randolph	13,689	5,817	113	3,584	1,355	1,132	1,823	135
Russell	16,295	9,606	183	2,628	1,561	915	1,642	140
St. Clair	17,839	11,631	210	2,231	1,554	675	1,762	214
Shelby	14,664	10,397	173	1,763	1,913	805	1,799	186
Sumter	10,558	4,101	66	3,694	904	694	1,109	100
Talladega	45,555	30,687	601	3,806	4,137	2,784	4,086	546
Tallapoosa	29,598	19,339	416	3,067	2,682	1,635	2,214	355
Tuscaloosa	66,194	42,086	684	5,165	6,716	5,216	7,054	727
Walker	43,619	27,977	400	3,177	5,099	2,335	5,202	571
Washington	5,950	3,307	67	1,034	584	214	800	56
Wilcox	9,150	3,382	55	3,347	959	524	964	81
Winston	10,201	4,534	81	2,689	1,130	491	1,365	89

Names:

Income, Personal
Estimates

Types:

list

Dates:

1947

"Personal Income in Alabama Counties Since 1939", 1958

Image 19 r04c01-02-000-0093 [Contents](#) [Index](#) [About](#)

31 - Personal Income
in Ala. Counties since 1939
1958

TABLE VII.
ESTIMATED PERSONAL INCOME IN ALABAMA COUNTIES
Major Types, 1950
(In thousands of dollars)

State and County	Total personal income	Wage & salary disbursements	Other labor income	Major types of personal income				Less: Personal contributions for social insurance
				Professionals' income	Farm	Nonfarm	Property income	
Alabama	2,659,000	1,644,000	44,000	249,000	276,000	240,000	245,000	32,000
Autauga	16,240	6,330	188	1,266	1,907	510	1,087	136
Baldwin	27,147	16,324	381	1,489	4,234	2,465	2,651	387
Barbour	19,365	8,482	244	5,436	2,235	1,567	1,599	196
Bibb	16,424	6,099	151	1,288	1,012	354	1,475	155
Blount	17,429	6,444	156	3,940	2,840	871	2,165	187
Bullock	7,980	3,400	84	2,122	924	637	895	82
Butler	17,590	10,127	296	2,209	1,961	1,257	1,977	236
Calhoun	81,921	57,299	1,750	2,281	7,741	6,598	7,542	1,390
Chambers	39,227	29,257	1,117	2,164	2,368	2,114	2,837	620
Cherokee	9,549	3,346	87	3,159	942	558	1,832	95
Chilton	16,473	8,159	228	2,856	1,992	1,578	1,883	223
Choctaw	10,329	4,999	153	2,272	1,207	587	1,182	131
Clarke	19,107	9,931	306	2,821	2,550	1,684	2,070	255
Clay	8,860	4,129	124	1,839	1,120	692	1,047	111
Cleburne	6,205	3,051	89	1,453	637	361	698	84
Coffee	22,632	9,724	287	6,599	2,647	1,577	2,237	239
Colbert	41,289	26,267	732	3,683	4,188	2,956	4,084	621
Conecuh	10,930	5,296	142	2,245	1,275	713	1,888	129
Cook	7,252	4,276	130	1,025	783	264	884	110
Covington	29,248	15,946	474	4,367	3,494	2,358	2,994	385
Crenshaw	10,228	4,240	108	2,484	1,394	716	1,399	113
Cullman	29,880	10,617	261	9,637	3,076	2,117	4,520	348
Dale	13,881	6,235	158	3,575	1,603	1,072	1,414	166
Dallas	40,430	24,144	322	5,112	4,119	3,879	3,293	639
DeKalb	26,862	10,055	297	8,837	2,864	1,637	3,468	296
Elmore	23,906	14,020	401	3,129	2,772	1,539	2,389	344
Escambia	22,732	11,757	307	2,442	3,256	2,241	3,051	302
Etowah	100,282	70,729	2,439	3,193	10,570	6,723	8,289	1,661
Fayette	12,402	5,286	169	2,795	1,329	1,214	1,670	151
Franklin	15,144	7,456	195	4,590	2,168	1,255	2,639	219
Geneva	17,993	7,095	199	5,682	1,747	1,338	2,110	178
Greene	6,820	2,531	57	2,263	710	476	842	59
Hale	10,008	4,010	89	3,060	1,155	606	1,183	95
Henry	12,716	3,860	93	5,786	1,030	894	1,146	93
Houston	43,602	21,330	496	8,417	5,380	4,043	4,448	512

Names:

Income, Personal
Estimates

Types:

list

Dates:

1950

241 - Personal Income
in Ala. Counties since 1939
1958

TABLE VII. (Continued)
ESTIMATED PERSONAL INCOME IN ALABAMA COUNTIES
MAJOR TYPES, 1950
(In thousands of dollars)

State and County	Total personal income	Wage & salary disbursements	Other labor income	Proprietors' income			Transfer payments	Less: Personal contributions for social insurance
				Farm	Nonfarm	Property income		
Jackson	20,250	8,280	219	5,527	2,283	1,470	2,704	233
Jefferson	709,019	505,100	13,295	2,532	69,508	80,845	48,948	11,210
Lamar	9,298	2,547	61	3,523	1,176	815	1,359	83
Lauderdale	44,136	26,071	654	5,585	5,105	3,539	3,874	642
Lawrence	15,205	3,950	82	7,385	1,182	612	2,118	124
Lee	38,444	25,112	703	2,183	3,562	3,026	4,444	586
Limestone	21,829	7,257	148	8,528	1,951	1,391	2,747	183
Lowndes	7,275	2,900	66	2,475	843	349	705	63
Macon	17,593	9,904	193	2,379	1,839	1,124	2,369	215
Madison	56,237	33,430	965	6,329	3,359	4,848	6,139	773
Marengo	17,581	8,228	206	3,858	2,202	1,474	1,810	197
Marion	17,637	7,369	187	4,945	2,615	978	2,350	208
Marshall	31,582	12,637	336	8,478	3,839	2,785	3,861	354
Mobile	244,974	169,975	4,110	2,318	25,311	28,225	19,124	4,089
Monroe	15,951	7,825	246	3,954	1,680	1,003	1,432	189
Montgomery	158,836	110,338	2,190	3,337	15,743	17,296	12,435	2,703
Morgan	46,621	26,068	735	5,648	5,759	3,829	5,229	647
Perry	9,764	4,659	117	2,467	982	724	911	96
Pickens	13,150	5,747	161	3,647	1,506	1,044	1,186	141
Pike	20,860	8,613	205	5,144	2,284	2,359	2,473	218
Randolph	15,695	7,960	275	3,010	1,607	1,301	1,741	199
Russell	26,358	18,283	543	2,970	2,191	1,191	2,520	440
St. Clair	18,672	12,114	378	1,843	1,621	1,069	1,938	291
Shelby	29,570	13,615	359	1,550	2,167	1,054	2,156	331
Sumter	12,118	5,545	130	2,999	1,249	902	1,360	127
Talladega	53,611	38,025	1,271	2,618	4,894	3,453	4,199	850
Tallapoosa	33,703	22,955	827	3,200	3,152	2,336	2,745	512
Tuscaloosa	83,219	55,609	1,493	3,873	8,098	7,037	8,389	1,282
Walker	46,100	23,167	627	2,344	6,082	2,864	5,767	691
Washington	8,326	4,250	132	1,746	869	292	1,656	119
Wilcox	11,008	4,562	119	3,326	1,520	610	1,178	107
Winston	10,453	4,561	129	2,449	1,042	642	1,763	131

Names:

Income, Personal
Estimates

Types:

list

Dates:

1950

"Personal Income in Alabama Counties Since 1939", 1958

Image 21 r04c01-02-000-0095 [Contents](#) [Index](#) [About](#)

② AL - Personal Income
in Ala. Counties since 1939
1958

TABLE VIII.
ESTIMATED PERSONAL INCOME IN ALABAMA COUNTIES
Major Types, 1953
(In thousands of dollars)

State and County	Total personal income	Major types of personal income						Less: Personal contributions for social insurance
		Wage & salary disbursements	Other labor income	Proprietors' income		Property income	Transfer payments	
				Farm	Nonfarm			
Alabama	3,344,000	2,257,000	66,000	289,000	312,000	263,000	210,000	53,000
Autauga	11,919	7,953	252	1,458	1,003	485	948	180
Baldwin	38,716	25,414	578	1,729	5,681	3,293	2,611	500
Barbour	21,709	10,317	313	6,310	2,080	1,392	1,544	247
Bibb	10,183	5,895	173	1,495	980	624	1,171	155
Blount	19,807	8,020	195	6,895	2,348	1,000	1,564	215
Bullock	8,792	3,987	89	2,463	888	700	702	97
Butler	21,296	13,537	453	2,564	1,944	1,450	1,642	324
Calhoun	118,776	88,188	2,888	2,647	10,007	7,719	6,411	2,075
Chambers	42,074	32,069	1,404	2,511	2,465	1,890	2,479	744
Cherokee	11,801	5,384	169	3,666	1,191	666	870	145
Chilton	18,660	9,871	292	3,315	2,183	1,548	1,614	251
Choctaw	11,605	5,990	190	2,637	1,236	689	1,020	157
Clarke	21,955	12,294	403	3,274	2,653	1,855	1,792	316
Clay	10,836	5,558	180	2,158	1,549	846	888	143
Cleburne	7,170	3,556	87	1,686	847	466	622	94
Coffee	28,955	14,493	468	7,659	3,312	1,674	1,703	354
Colbert	53,235	39,140	1,244	4,274	4,856	3,064	3,588	901
Conecuh	12,501	6,760	193	2,605	1,143	798	1,170	168
Cosa	8,487	5,379	168	1,190	818	347	722	137
Covington	34,651	20,414	656	5,069	3,694	2,794	2,528	504
Crenshaw	11,595	5,321	137	2,883	1,533	746	1,113	138
Cullman	35,092	14,512	964	11,185	3,719	2,364	3,268	420
Dale	59,505	50,939	847	4,149	1,950	1,421	1,249	1,060
Dallas	53,751	35,981	750	5,934	4,203	4,325	3,325	797
DeKalb	31,535	13,226	414	10,257	3,415	2,019	2,565	361
Elmore	26,722	16,628	499	3,632	2,796	1,642	1,989	404
Escambia	28,542	17,066	486	2,834	3,720	2,514	2,346	424
Etowah	117,619	85,612	3,199	3,706	11,584	7,793	7,805	2,080
Fayette	14,614	7,454	239	3,244	1,414	1,280	1,182	199
Franklin	19,615	8,709	226	5,327	2,288	1,310	2,006	251
Geneva	21,338	9,674	286	6,595	1,926	1,539	1,558	240
Greene	7,621	3,186	69	2,626	693	453	671	77
Hale	11,476	5,054	119	3,532	1,204	590	1,072	115
Henry	14,245	4,879	130	6,716	1,049	797	825	121
Houston	50,379	26,903	663	9,769	6,110	4,195	3,375	635

- 16 -

Names:

Income, Personal
Estimates

Types:

list

Dates:

1953

241 - Personal Income
in Ala. Counties since 1939
1958

TABLE VIII. (Continued)
ESTIMATED PERSONAL INCOME IN ALABAMA COUNTIES
Major Types, 1953
(In thousands of dollars)

State and County	Total Personal Income	Major types of personal income					Transfer payments	Less: Personal contributions for social insurance
		Wage & salary disbursements	Other labor income	Proprietors' income		Property income		
				Farm	Nonfarm			
Jackson	25,257	11,972	948	6,414	2,854	1,955	2,123	319
Jefferson	889,861	675,502	20,954	2,938	75,896	83,803	46,124	15,268
Lamar	11,916	4,842	159	4,089	1,265	779	915	133
Lauderdale	58,478	28,920	1,085	6,482	5,471	4,054	3,397	951
Lawrence	19,976	8,030	272	8,572	1,210	625	1,473	206
Lee	45,601	22,848	970	2,534	2,588	3,059	2,380	778
Limestone	26,460	10,862	263	9,899	2,309	1,541	1,553	267
Lowndes	8,663	3,842	92	2,873	901	406	631	82
Macon	22,997	14,664	267	2,994	1,827	1,105	1,677	327
Madison	78,740	54,420	1,400	7,346	6,443	5,733	4,615	1,237
Marengo	22,665	12,696	328	4,478	2,517	1,388	1,544	296
Marion	21,212	10,280	326	5,740	2,203	1,204	1,734	275
Marshall	38,082	17,480	497	9,840	4,741	3,087	2,900	463
Mobile	830,523	241,626	6,263	2,690	33,140	34,823	17,589	5,608
Monroe	19,574	10,325	326	4,589	2,028	1,292	1,256	242
Montgomery	195,666	145,472	2,995	3,873	17,945	17,803	10,817	3,239
Morgan	57,155	35,318	1,089	6,555	6,491	4,337	4,229	864
Perry	11,101	5,561	141	2,863	1,020	746	883	122
Pickens	16,112	8,042	245	4,233	1,695	1,060	1,034	197
Pike	23,767	11,569	299	5,971	2,300	2,142	1,775	289
Randolph	16,263	8,567	312	3,494	1,535	1,302	1,375	222
Russell	20,456	21,170	666	2,403	2,870	1,333	2,541	527
St. Clair	17,847	11,447	391	2,139	1,307	1,239	1,615	291
Shelby	23,124	14,580	398	1,799	3,055	1,181	2,177	366
Sumter	13,748	6,940	163	3,480	1,181	1,077	1,070	163
Talladega	70,148	52,616	2,043	3,038	5,812	4,120	3,741	1,222
Tallapoosa	26,463	25,434	1,028	2,554	3,285	2,354	2,415	607
Tuscaloosa	107,926	78,677	2,380	4,497	8,996	7,944	7,287	1,853
Walker	52,370	34,036	790	3,881	6,603	3,173	4,749	862
Washington	11,079	6,610	242	2,027	1,099	356	912	168
Wilcox	11,933	5,086	130	3,860	1,309	686	987	125
Winston	13,580	7,502	281	2,843	1,072	867	1,121	206

Names:

Income, Personal
Estimates

Types:

list

Dates:

1953

211 - Personal Income
in Ala. Counties since 1939
1958

TABLE IX.
ESTIMATED PERSONAL INCOME IN ALABAMA COUNTIES
Major Types, 1956
(In thousands of dollars)

State and County	Total personal income	Major types of personal income						Less: Personal contributions for social insurance
		Wage & salary disbursements	Other labor income	Proprietors' income		Property income	Transfer payments	
				Farm	Nonfarm			
Alabama	3,854,700	2,648,700	90,600	216,400	367,400	329,300	279,500	77,200
Autauga	13,601	9,031	384	1,218	1,235	691	1,305	263
Baldwin	53,985	35,642	1,047	3,273	6,540	4,212	3,426	1,055
Barbour	20,825	10,838	424	3,579	2,170	1,873	2,271	330
Bibb	9,863	5,901	263	477	1,082	798	1,514	172
Blount	18,698	8,618	322	3,439	2,954	1,508	2,125	298
Bullock	9,981	4,624	171	1,578	934	832	1,063	141
Butler	21,699	12,238	536	2,540	2,573	1,766	2,307	361
Calhoun	155,768	101,779	3,488	2,128	10,969	10,791	9,554	2,907
Chambers	44,268	33,753	1,492	2,058	2,538	2,088	3,268	949
Cherokee	12,562	4,418	247	4,621	1,462	949	1,000	135
Chilton	19,916	9,678	390	3,165	2,530	2,242	2,203	392
Choctaw	11,764	6,095	252	2,270	1,214	705	1,413	185
Clarke	23,756	13,905	521	2,166	2,984	2,376	2,226	422
Clay	16,889	5,228	256	1,060	1,450	983	1,272	166
Cleburne	9,026	4,289	210	2,138	1,049	582	788	130
Coffee	25,696	13,316	610	3,429	4,342	2,154	2,251	466
Colbert	60,405	43,837	1,665	2,052	6,453	3,705	3,369	1,276
Conecuh	13,968	6,786	288	3,168	1,268	953	1,709	204
Coosa	8,158	5,489	230	451	897	341	911	161
Covington	36,479	21,904	906	3,589	3,905	3,443	3,386	654
Crenshaw	11,968	5,857	236	2,165	1,586	888	1,419	183
Cullman	37,140	14,660	580	10,622	4,584	3,496	3,309	441
Dale	45,432	37,414	871	2,487	2,059	1,686	1,976	1,061
Dallas	56,699	37,828	1,172	4,213	4,381	5,468	4,745	1,108
DeKalb	32,991	13,760	635	8,952	3,996	3,010	3,060	422
Elmore	28,280	16,448	609	4,022	2,868	2,201	2,619	487
Escambia	31,927	17,576	671	3,805	4,034	3,282	3,697	538
Etowah	148,711	109,231	4,222	3,773	13,620	11,762	9,269	3,166
Fayette	11,852	5,442	283	1,591	1,596	1,514	1,590	164
Franklin	18,386	9,177	364	2,669	2,550	1,510	2,398	282
Geneva	19,179	9,044	383	4,450	1,950	1,534	2,091	273
Greene	8,194	3,734	151	1,798	768	765	1,092	114
Hale	12,388	5,932	237	2,801	1,335	824	1,441	182
Henry	12,014	4,554	211	4,227	1,179	956	1,026	139
Houston	55,323	30,535	1,058	7,832	7,530	5,219	4,073	924

- 18 -

Names:

Income, Personal
Estimates

Types:

list

Dates:

1956

241 - Personal Income
in Ala. Counties since 1939
1958

TABLE IX. (Continued)
ESTIMATED PERSONAL INCOME IN ALABAMA COUNTIES
MAJOR TYPES, 1956
(In thousands of dollars)

State and County	Total personal income	Wage & salary disbursements	Other labor income	Proprietors' income			Transfer payments	Less: Personal contributions for social insurance
				Farm	Nonfarm	Property income		
Jackson	26,798	12,506	602	5,400	3,906	2,543	2,796	385
Jefferson	1,104,166	854,609	27,589	70	86,902	100,149	69,501	24,654
Lamar	9,966	3,634	170	2,249	1,581	1,140	1,312	120
Lauderdale	60,790	39,627	1,595	4,008	6,780	4,882	5,070	1,172
Lawrence	14,117	5,305	254	4,254	1,613	980	1,925	104
Lee	49,944	24,113	1,248	2,776	3,847	3,668	5,278	986
Limestone	23,815	10,130	466	5,940	2,933	2,162	2,493	309
Lowndes	7,608	3,470	158	1,628	994	481	1,012	107
Macon	21,307	13,375	383	2,642	1,739	1,378	2,160	390
Madison	99,270	62,358	2,028	9,439	9,018	9,971	7,285	1,829
Marengo	22,870	12,872	484	3,376	2,608	1,735	2,127	392
Marion	17,093	6,763	421	3,683	2,651	1,642	2,140	207
Marshall	41,225	17,508	781	8,955	6,085	4,849	3,588	541
Mobile	458,441	324,667	9,685	3,675	43,429	43,236	23,179	9,420
Monroe	20,239	10,779	447	3,840	2,336	1,476	1,682	321
Montgomery	244,186	185,472	4,660	286	23,088	21,397	14,642	5,359
Morgan	60,128	37,324	1,479	4,692	7,352	5,066	5,430	1,115
Perry	11,273	4,830	195	3,047	1,143	905	1,297	144
Pickens	15,237	7,807	370	2,229	2,007	1,406	1,605	237
Pike	22,229	10,781	453	3,807	2,560	2,416	2,540	328
Randolph	17,269	9,351	430	2,704	1,790	1,468	1,803	277
Russell	37,908	27,848	1,031	2,046	3,011	1,603	3,166	797
St. Clair	20,101	13,278	530	1,791	1,450	1,400	2,034	382
Shelby	31,175	21,341	763	1,575	3,607	1,652	2,858	621
Sumter	14,056	8,440	298	1,565	1,146	1,147	1,713	253
Talladega	79,398	50,816	2,379	1,889	6,117	5,640	5,275	1,718
Tallapoosa	37,888	25,968	1,200	1,820	3,706	2,679	3,264	749
Tuscaloosa	122,256	88,648	3,060	3,907	10,560	9,213	10,334	2,566
Walker	56,820	36,020	1,142	3,090	7,874	3,648	6,120	1,074
Washington	12,822	8,829	377	1,303	994	450	1,130	261
Wilcox	12,902	6,720	286	2,383	1,372	848	1,505	212
Winston	12,249	5,077	248	3,326	1,226	1,023	1,501	152

Names:

Income, Personal
Estimates

Types:

list

Dates:

1956

AL - Personal Income
in Ala. Counties since 1939
1958

TABLE X.
ESTIMATED PER CAPITA INCOME IN ALABAMA COUNTIES
Selected Years

	1939	1947	1950	1953	1956
Alabama	250	794	870	1,089	1,235
Autauga	147	473	564	670	745
Baldwin	258	683	663	919	1,099
Barbour	161	617	671	768	765
Bibb	176	528	580	650	672
Blount	156	527	602	765	734
Bullock	154	461	498	580	623
Butler	158	500	603	754	799
Calhoun	311	895	1,022	1,338	1,481
Chambers	240	813	994	1,080	1,167
Cherokee	174	596	531	713	841
Chilton	148	511	613	720	793
Choctaw	120	405	540	636	699
Clarke	155	548	721	876	974
Clay	133	526	637	836	881
Cleburne	130	471	522	641	848
Coffee	159	680	738	942	889
Colbert	326	1,098	1,045	1,380	1,482
Conecuh	127	416	503	624	744
Coosa	126	480	617	728	732
Covington	207	655	726	896	935
Crenshaw	136	487	540	650	733
Cullman	181	611	610	766	814
Dale	157	579	667	1,338	1,500
Dallas	197	648	720	909	938
DeKalb	169	579	597	740	801
Elmore	160	599	757	842	863
Escambia	205	612	725	918	1,044
Etowah	332	962	1,070	1,249	1,555
Fayette	166	584	641	828	755
Franklin	149	576	707	809	798
Geneva	147	636	696	870	849
Greene	105	381	414	504	530
Hale	104	390	481	583	636
Henry	148	620	682	837	759
Houston	219	817	939	1,046	1,126

— 20 —

Names:

Income, Estimated
Per Capita,

Counties

Types:

list

Dates:

1939-1956

321 - Personal Income
in Ala. Counties since 1939
1958

TABLE X. (Continued)
ESTIMATED PER CAPITA INCOME IN ALABAMA COUNTIES
Selected Years

	1939	1947	1950	1953	1956
Jackson	168	560	520	662	729
Jefferson	450	1,191	1,271	1,541	1,847
Lamar	129	498	573	775	717
Lauderdale	191	618	817	1,086	1,113
Lawrence	129	497	561	777	664
Lee	233	753	854	1,031	1,116
Limestone	162	564	612	764	706
Lowndes	116	382	494	514	497
Macon	189	608	577	758	759
Madison	217	739	773	1,001	1,189
Marengo	132	480	597	814	808
Marion	135	532	648	887	765
Marshall	191	653	702	842	901
Mobile	395	1,138	1,062	1,356	1,566
Monroe	143	482	621	796	844
Montgomery	387	1,141	1,143	1,295	1,516
Morgan	263	773	882	1,117	1,185
Perry	113	410	478	578	611
Pickens	136	498	541	713	684
Pike	155	606	683	830	789
Randolph	155	506	608	749	822
Russell	127	427	654	769	935
St. Clair	206	676	701	715	806
Shelby	202	365	679	798	980
Sumter	140	435	514	618	642
Talladega	214	766	844	1,087	1,195
Tallapoosa	253	864	962	1,088	1,144
Tuscaloosa	276	756	886	1,124	1,220
Walker	206	695	725	903	1,043
Washington	152	384	534	744	859
Wilcox	122	384	470	543	563
Winston	140	564	574	806	910

- 21 -

Names:

Income, Estimated
Per Capita,

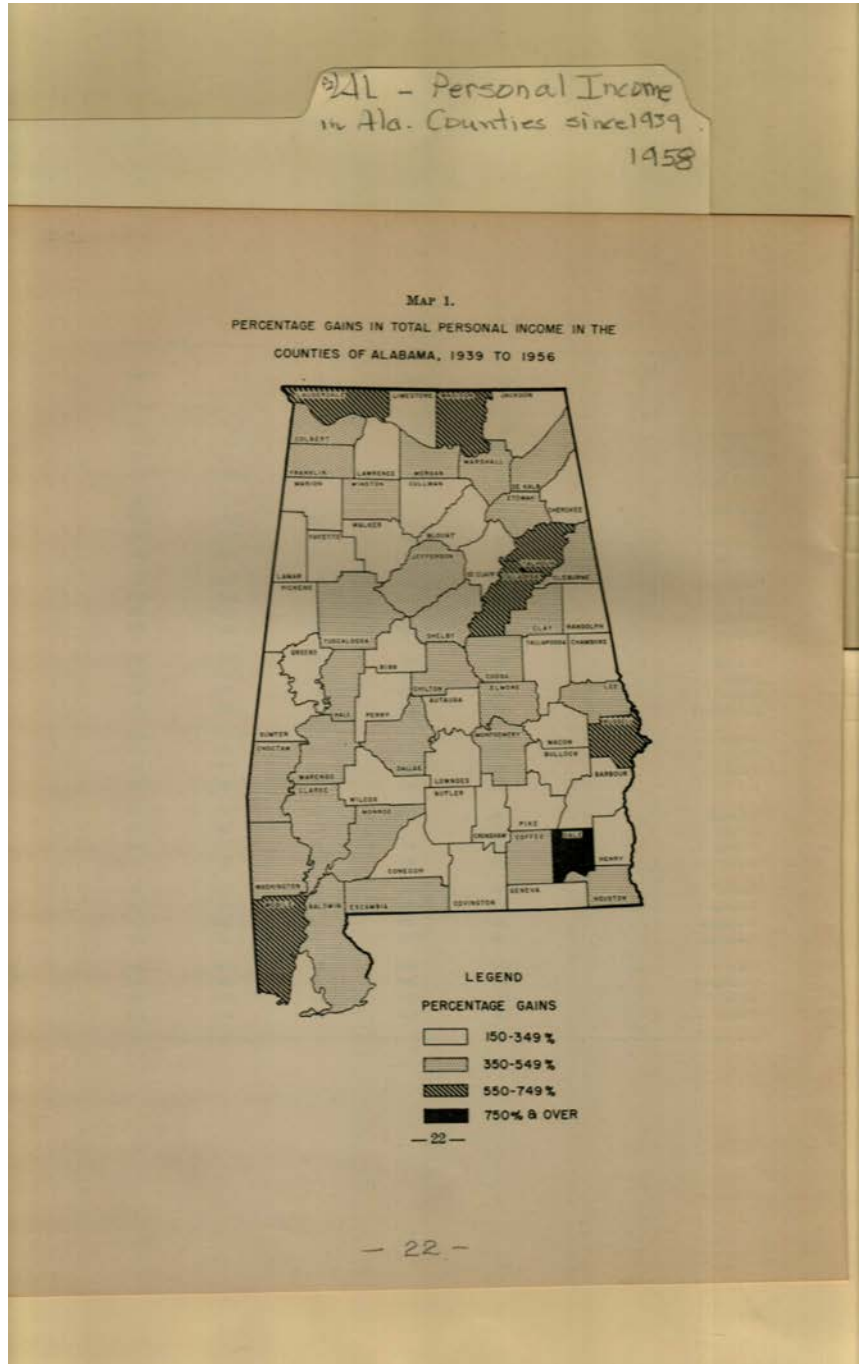
Counties

Types:

list

Dates:

1939-1956



Names:

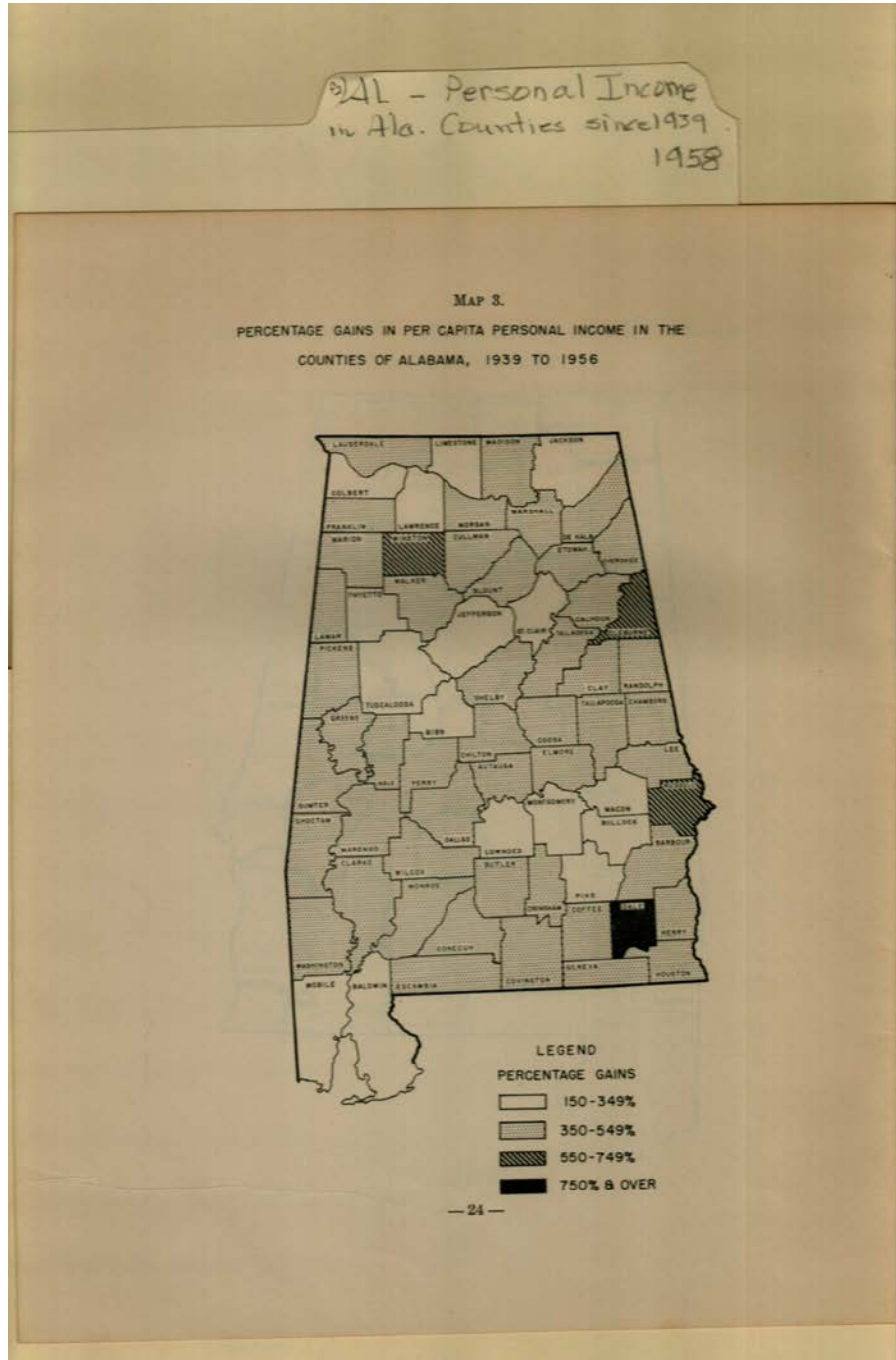
Personal Income
Gains, Counties

Types:

map

Dates:

1939-1956



Names:

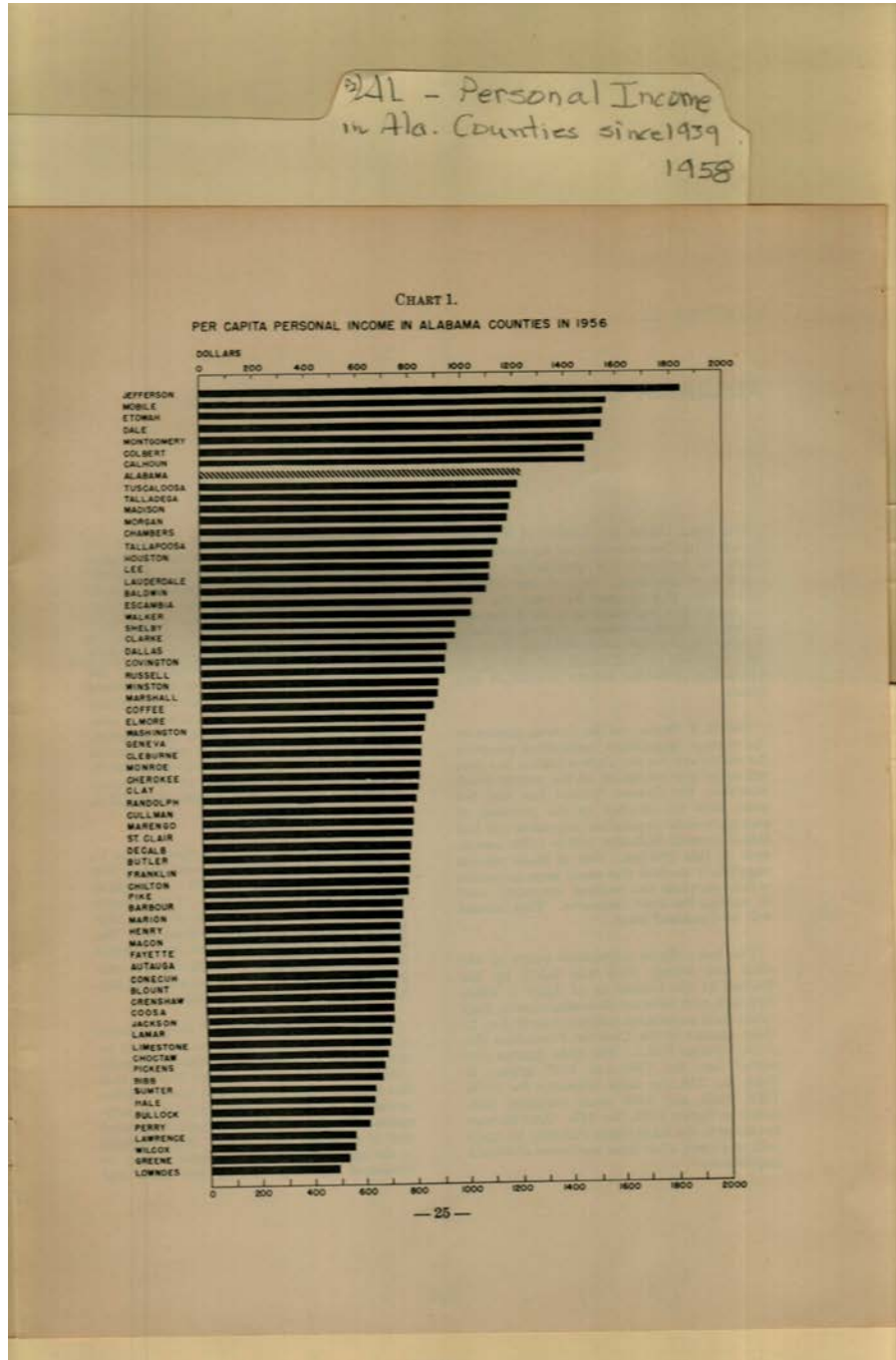
Personal Income
Gains, Counties

Types:

map

Dates:

1939-1956



Names:

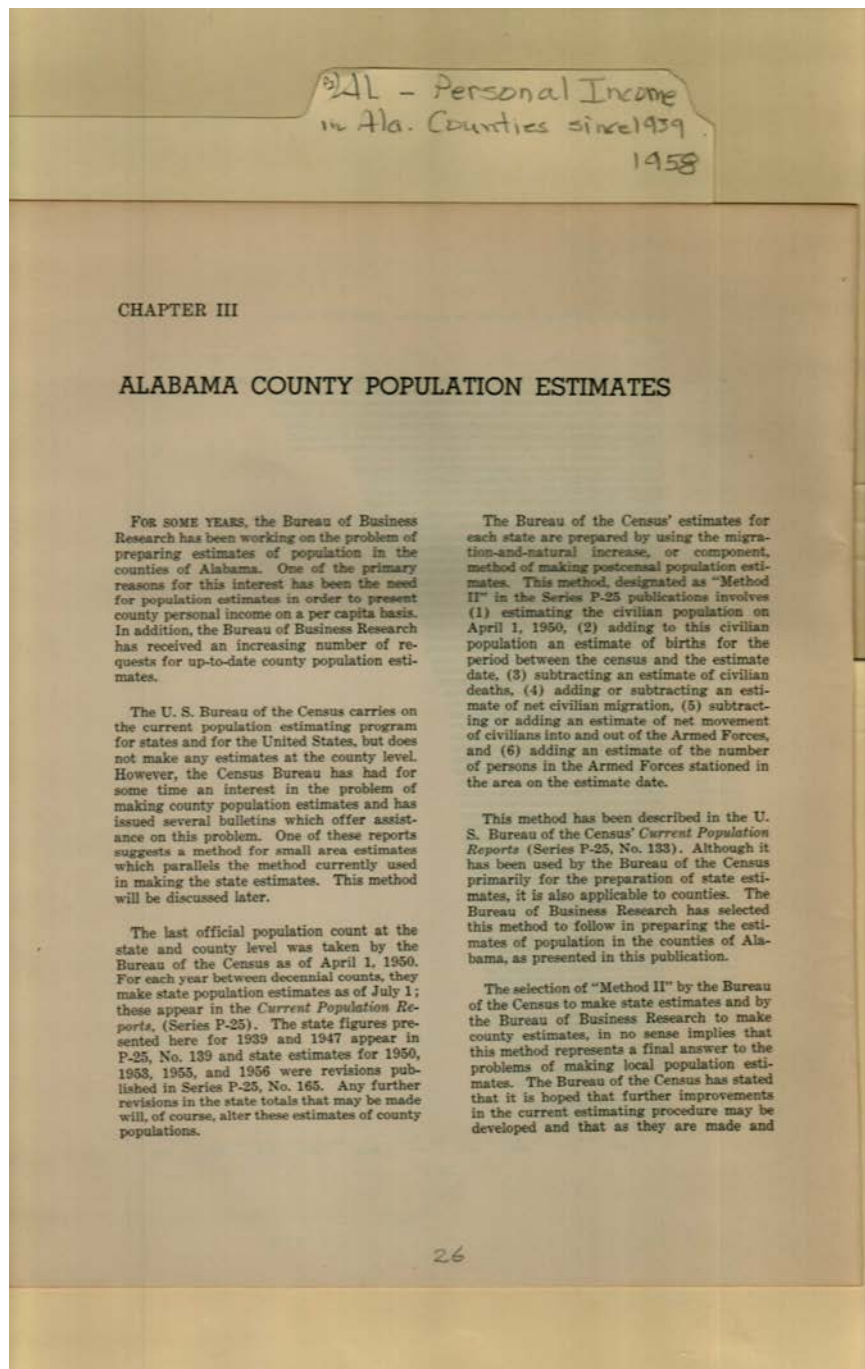
Personal Income, Per
Capita, Counties

Types:

graph

Dates:

1956

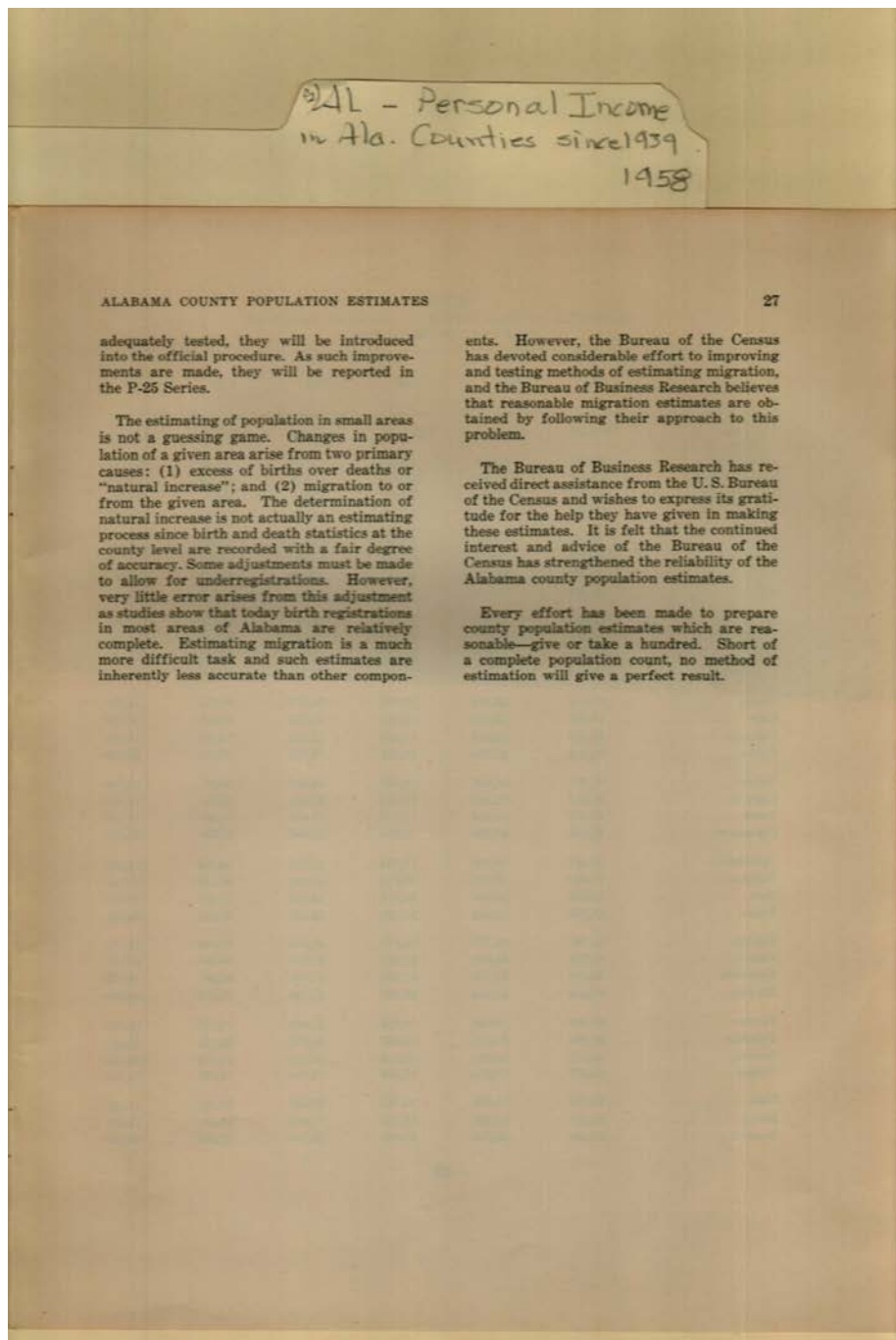


Names:

Population Estimates,
Alabama Counties

Types:

booklet



Names:

Population Estimates,
Alabama Counties

Types:

booklet

3) AL - Personal Income
 in Ala. Counties since 1939
 1958

TABLE XI.
ESTIMATES OF POPULATION IN ALABAMA COUNTIES
 As of July 1 for Selected Years

	1939	1947	1950	1953	1955	1956
Alabama	2,814,000	2,942,000	3,057,000	3,072,000	3,085,000	3,121,000
Autauga	20,837	18,637	18,158	17,803	18,246	18,265
Baldwin	32,108	37,586	40,933	42,144	47,048	48,319
Barbour	32,503	39,432	38,847	38,249	27,331	27,236
Bibb	20,020	18,256	17,959	15,671	14,865	14,697
Blount	29,293	28,650	28,300	25,908	24,969	25,462
Bullock	19,677	16,825	16,629	15,150	14,892	14,572
Butler	32,230	29,671	29,183	28,009	27,678	27,150
Calhoun	62,895	73,965	79,416	86,316	90,717	91,616
Chambers	41,864	39,605	39,467	38,959	37,922	37,931
Cherokee	19,795	17,839	17,607	16,543	15,217	14,909
Chilton	27,768	26,696	26,880	25,923	25,183	25,116
Choctaw	20,060	19,143	19,122	18,224	16,707	16,837
Clarke	27,451	26,367	26,507	25,072	24,811	24,384
Clay	16,794	14,534	13,907	12,968	12,319	12,134
Clayburne	13,538	12,228	11,886	11,193	11,033	10,650
Coffee	31,773	30,530	30,672	30,750	28,698	28,888
Colbert	33,865	37,306	39,500	40,020	40,632	40,758
Conecuh	25,318	22,449	21,742	20,041	19,048	18,782
Coosa	13,370	12,034	11,748	11,663	11,693	11,147
Covington	42,123	40,230	40,310	38,664	38,852	39,001
Crenshaw	23,473	19,956	18,952	17,846	16,380	16,333
Cullman	47,026	47,768	48,970	45,792	46,180	45,631
Dale	22,533	20,990	20,796	28,702	27,609	29,316
Dallas	54,875	54,888	56,183	59,136	59,035	60,459
DeKalb	42,787	43,787	44,978	42,598	41,408	41,175
Elmore	34,315	31,925	31,600	31,741	32,863	32,755
Escambia	30,466	30,723	31,394	31,091	30,564	30,572
Etowah	72,094	86,494	93,747	94,193	93,018	95,613
Fayette	21,506	19,685	19,358	17,654	16,186	15,706
Franklin	27,368	25,842	25,665	24,237	22,188	23,028
Geneva	28,977	26,381	25,859	24,517	24,073	22,598
Greene	19,957	17,014	16,456	15,108	15,071	15,204
Hale	25,362	21,765	20,800	19,683	19,302	19,484
Henry	21,765	19,238	18,645	17,012	16,466	15,835
Houston	45,359	45,536	46,450	48,150	47,880	49,129

Names:

Population Estimates,
Alabama Counties

Types:

list

Dates:

1939-1956

241 - Personal Income
 in Ala. Counties since 1939
 1958

TABLE XI. (Continued)
 ESTIMATES OF POPULATION IN ALABAMA COUNTIES
 As of July 1 for Selected Years

	1939	1947	1950	1953	1955	1956
Jackson	41,522	38,970	38,938	38,285	37,365	36,761
Jefferson	456,832	519,280	558,062	577,544	587,533	597,737
Lamar	19,576	17,044	16,416	15,375	13,670	13,903
Lauderdale	45,921	51,114	54,995	53,860	53,970	54,632
Lawrence	27,693	26,891	27,086	25,719	25,328	25,025
Lee	36,211	41,957	45,003	44,245	45,746	44,772
Limestone	33,403	35,099	35,711	34,650	33,258	33,741
Lowndes	22,509	18,996	17,990	16,559	15,761	15,360
Macon	27,469	29,355	30,514	29,046	28,169	28,083
Madison	65,873	69,985	72,790	78,023	81,489	83,494
Marengo	35,497	30,679	29,448	27,835	28,508	28,302
Marion	28,583	27,243	27,222	24,750	22,427	22,333
Marshall	42,111	43,609	45,020	45,208	44,831	45,730
Mobile	141,024	201,339	230,747	243,712	265,736	279,922
Monroe	29,268	26,314	25,692	24,384	24,405	23,980
Montgomery	113,654	128,927	138,750	151,080	157,653	161,697
Morgan	47,826	50,696	52,842	51,154	51,148	50,729
Perry	26,432	21,783	20,407	19,195	18,567	18,448
Pickens	27,486	24,857	24,311	22,599	22,223	22,269
Pike	32,275	30,607	30,561	28,651	28,838	28,188
Randolph	25,345	22,980	22,478	21,844	21,576	21,617
Russell	35,536	38,388	40,301	39,588	40,880	40,323
St. Clair	27,153	26,384	26,646	24,959	24,426	24,953
Shelby	28,768	29,484	30,315	28,987	31,836	31,811
Sumter	27,158	24,243	23,573	22,248	21,812	21,892
Talladega	51,485	59,466	63,540	64,525	64,818	66,443
Tallapoosa	35,034	34,252	35,020	33,523	32,681	33,122
Tuscaloosa	75,527	87,548	93,946	96,024	98,978	100,196
Walker	63,771	62,745	63,670	58,007	53,779	54,460
Washington	16,080	15,509	15,588	14,892	14,937	14,919
Wilcox	26,103	23,831	23,440	21,962	22,421	22,927
Winston	18,620	18,077	18,222	15,497	13,797	13,459

Names:

Population Estimates,
Alabama Counties

Types:

list

Dates:

1939-1956

Frances Cabaniss Roberts Collection: Series 4, Subseries C, Box 1, Folder 2
"Personal Income in Alabama Counties Since 1939", 1958

[Contents](#) [Index](#) [About](#)

Table of Contents

[Image 1](#) (r04c01-02-000-0075)

[Image 2](#) (r04c01-02-000-0076)

[Image 3](#) (r04c01-02-000-0077)

[Image 4](#) (r04c01-02-000-0078)

[Image 5](#) (r04c01-02-000-0079)

[Image 6](#) (r04c01-02-000-0080)

[Image 7](#) (r04c01-02-000-0081)

[Image 8](#) (r04c01-02-000-0082)

[Image 9](#) (r04c01-02-000-0083)

[Image 10](#) (r04c01-02-000-0084)

[Image 11](#) (r04c01-02-000-0085)

[Image 12](#) (r04c01-02-000-0086)

[Image 13](#) (r04c01-02-000-0087)

[Image 14](#) (r04c01-02-000-0088)

[Image 15](#) (r04c01-02-000-0089)

[Image 16](#) (r04c01-02-000-0090)

[Image 17](#) (r04c01-02-000-0091)

[Image 18](#) (r04c01-02-000-0092)

[Image 19](#) (r04c01-02-000-0093)

[Image 20](#) (r04c01-02-000-0094)

[Image 21](#) (r04c01-02-000-0095)

[Image 22](#) (r04c01-02-000-0096)

[Image 23](#) (r04c01-02-000-0097)

[Image 24](#) (r04c01-02-000-0098)

[Image 25](#) (r04c01-02-000-0099)

[Image 26](#) (r04c01-02-000-0100)

[Image 27](#) (r04c01-02-000-0101)

[Image 28](#) (r04c01-02-000-0102)

[Image 29](#) (r04c01-02-000-0103)

[Image 30](#) (r04c01-02-000-0104)

[Image 31](#) (r04c01-02-000-0105)

[Image 32](#) (r04c01-02-000-0106)

[Image 33](#) (r04c01-02-000-0107)

[Image 34](#) (r04c01-02-000-0108)

[Table of Contents](#)

[Name & Place Index](#)

[About the Collection](#)

Frances Cabaniss Roberts Collection: Series 4, Subseries C, Box 1, Folder 2
"Personal Income in Alabama Counties Since 1939", 1958

[Contents](#) [Index](#) [About](#)

Name & Place Index

Accuracy Confidence [9](#)
Brunsmann, Howard G. [3](#)
Data Uses [8](#)
Demchak, June, Mrs. [3](#)
Graham, Robert, Dr. [3](#)
Hawley, Marion H. [1](#)
Income, Distribution [14](#)
Income, Estimated Per Capita, Counties [25](#), [26](#)
Income, Major Types [13](#)
Income, Personal Estimates [15](#), [16](#), [17](#), [18](#), [19](#), [20](#), [21](#),
[22](#), [23](#), [24](#)
Moore, Henry B. [3](#)
Per Capita Income [11](#)
Personal Income by Alabama Counties [1](#), [5](#)
Personal Income Concept [7](#)
Personal Income Declines, Counties [28](#)
Personal Income Gains, Counties [27](#), [29](#)
Personal Income, Per Capita, Counties [30](#)
Population Estimates, Alabama Counties [31](#), [32](#), [33](#), [34](#)
Sawyer, Carolyn, Mrs. [3](#)
Schwartz, Charles F., Dr. [3](#)
Shryock, Henry S., Jr. [3](#)
Total & Real Income [10](#)
University of Alabama [1](#)

Frances Cabaniss Roberts Collection

Preferred Citation: Frances Cabaniss Roberts Collection, Archives and Special Collections, M. Louis Salmon Library, University of Alabama in Huntsville, Huntsville, AL.

Collection Scope and Content: The Collection of 114 Linear ft. includes a total of 156 Archival Boxes. The Frances Cabaniss Roberts collection covers the historical records of the Cabaniss Roberts family. This collection contains extensive correspondence records of the Cabaniss Roberts family circa 1830 to 1930.

Archives/Special Collections Access Restrictions: None

Conditions Governing Use: This material may be protected under U. S. Copyright Law (Title 17, U.S. Code) which governs the making of photocopies or reproductions of copyrighted materials. You may use the digitized material for private study, scholarship, or research. Though the University of Alabama in Huntsville Archives and Special Collections has physical ownership of the material in its collections, in some cases we may not own the copyright to the material. It is the patron's obligation to determine and satisfy copyright restrictions when publishing or otherwise distributing materials found in our collections.

Provenance: Gift of Johanna Shields on October 28, 2006.



THE UNIVERSITY OF
ALABAMA IN HUNTSVILLE

**The UAH Archives and Special Collections
M. Louis Salmon Library**