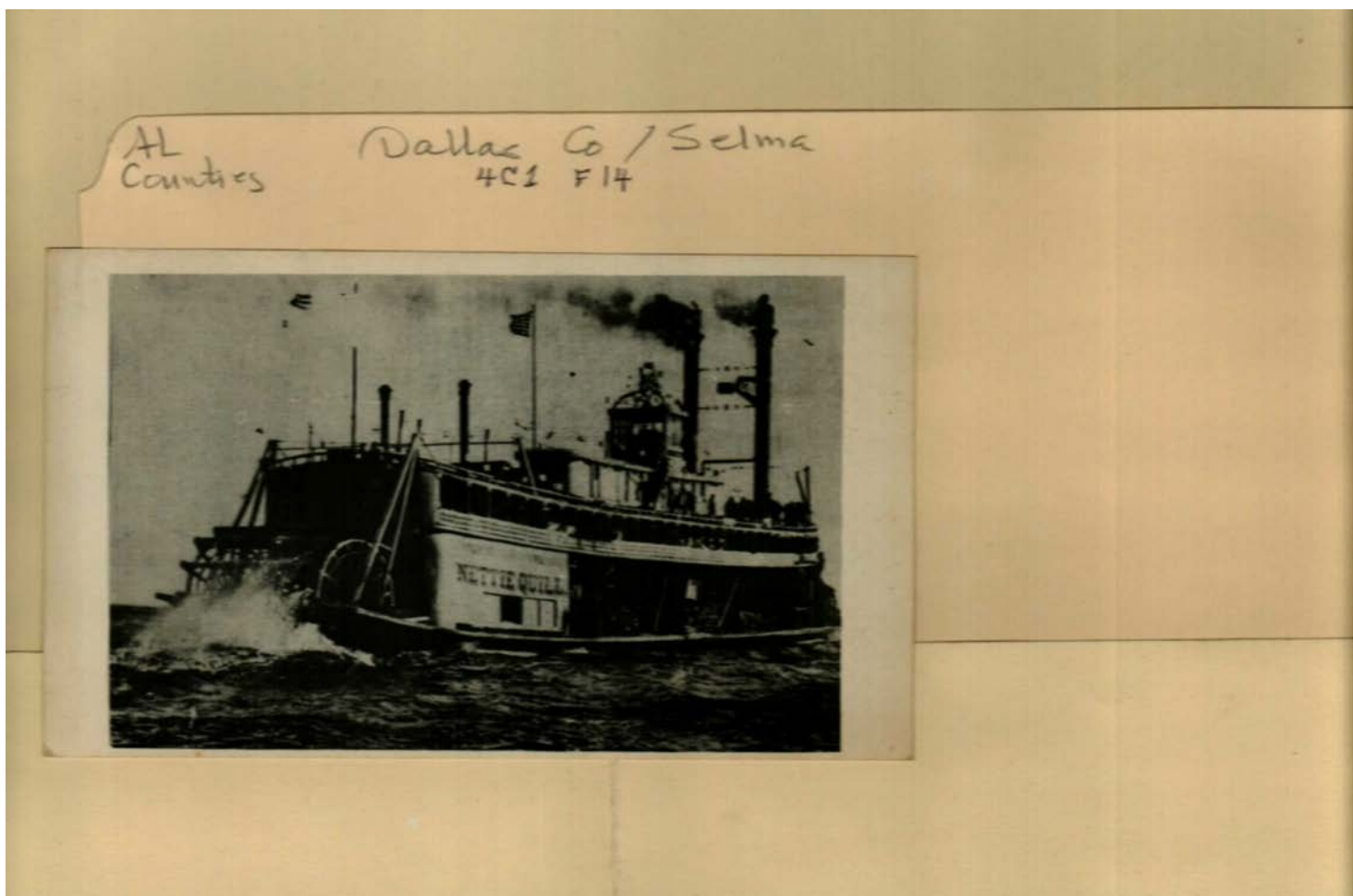


Frances Cabaniss Roberts Collection: Series 4, Subseries C, Box 1, Folder 14
Dallas County and Cahaba Historical Commission Various Correspondence, 1960 - 1963

Image 1 r04c01-14-000-0034 [Contents](#) [Index](#) [About](#)

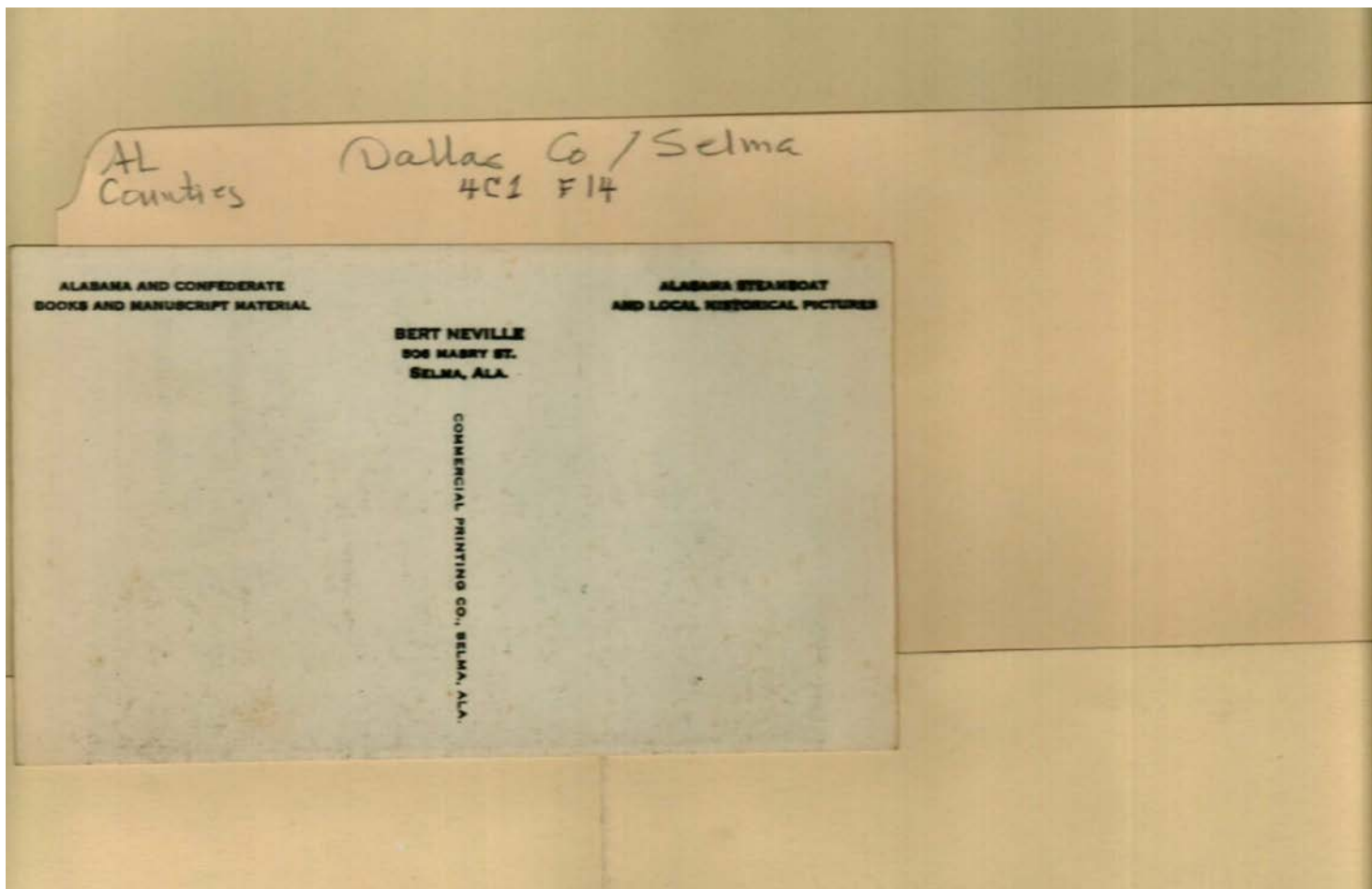


Names:

Steamboat Nettie
Quill

Types:

photo



Names:

Alabama Steamboat

Neville, Bert

Places:

Selma, AL

Types:

card

AL Counties Dallas Co / Selma
4C1 F14

B E R I N E V I L L E
Historical River Research and Steamboatana
506 Mabry Street
Selma, Alabama

Dear Fellow Collectors and Researchers,

Because of some lucky finds, and purchases (some of the early material listed was re-covered when building was being remodeled) I have a good many extra waybills, ladings, and other forms.

These, issued by boats in the Alabama Rivers trades, might have general interest. Most were built in Ohio River Ways, and some were bought from, or sold to other river interests.

Places and dates some boats were built are given.

Please note too the reference to the Foster articles. These titled "Anto-Bellum Floating Palaces of the Alabama", or the "Good Old Times in Dixie", were written, about 1900 by Judge Fleetwood Foster, publisher of the Wilcox Banner, in Camden, Alabama. Judge Foster was our neighbor when I was a child, in Camden, and I remember him.

A native of Mobile, he was a collector for Cox-Bainard, whose Daily, or Dispatch Line, organized in 1854, owned or controlled fourteen boats, worth one Million Dollars, when Mobile, the second largest Cotton Port, handled 800,000 bales of cotton annually.

He describes the combination boats, also the independent ones and interesting personalities who owned and operated them.

These would, I think, be an interesting addition to any Western River or general steamboat collection.

This list, to some extent, centers around Camden, Alabama, the river makes a fifty mile bend here, all within 2 to 8 miles. I know the area well, have kinfolks and friends all over and have helped put a "Flat" (ferry) over many times and places. We did it the hard way, pole up, head out, row (with big oars or sweeps) like everything, hoping we'd hit above or even with the landing approach on opposite shore. These flats, home made affairs, carried two early automobiles and/or mule or horse drawn rigs.

My first trip, Bridgeport to Mobile, was aboard the Packet Mary, Captain Amos Travis, Master and Tom Barry, Pilot, let me steer. I was 4 and have been boat happy since.

We met the "City of Mobile" in the lower river. My Mother and Father, visiting in Mobile, were aboard, out for the ride. We locked the City in mid-river (Tom Barry had the wheel for this operation) and my parents came aboard.

The Mary, built Jeffersonville, 1898, for Joe Speith, and also called the "Mary Joe" and the "Mary Speed", was destroyed by the 1906 hurricane in Mobile.

Good luck, happy hunting and easy water.

Sincerely,
Bert Neville
Bert Neville

BN-8

Names:

Barry, Tom
Cox-Brainard
Foster, Fleetwood,
Judge

Historical River
Research
Neville, Bert
Speith, Joe

Steamboatana
Travis, Amos,
Captain
City of Mobile

Mary Joe
Mary Speed
Packet Mary
Wilcox Banner

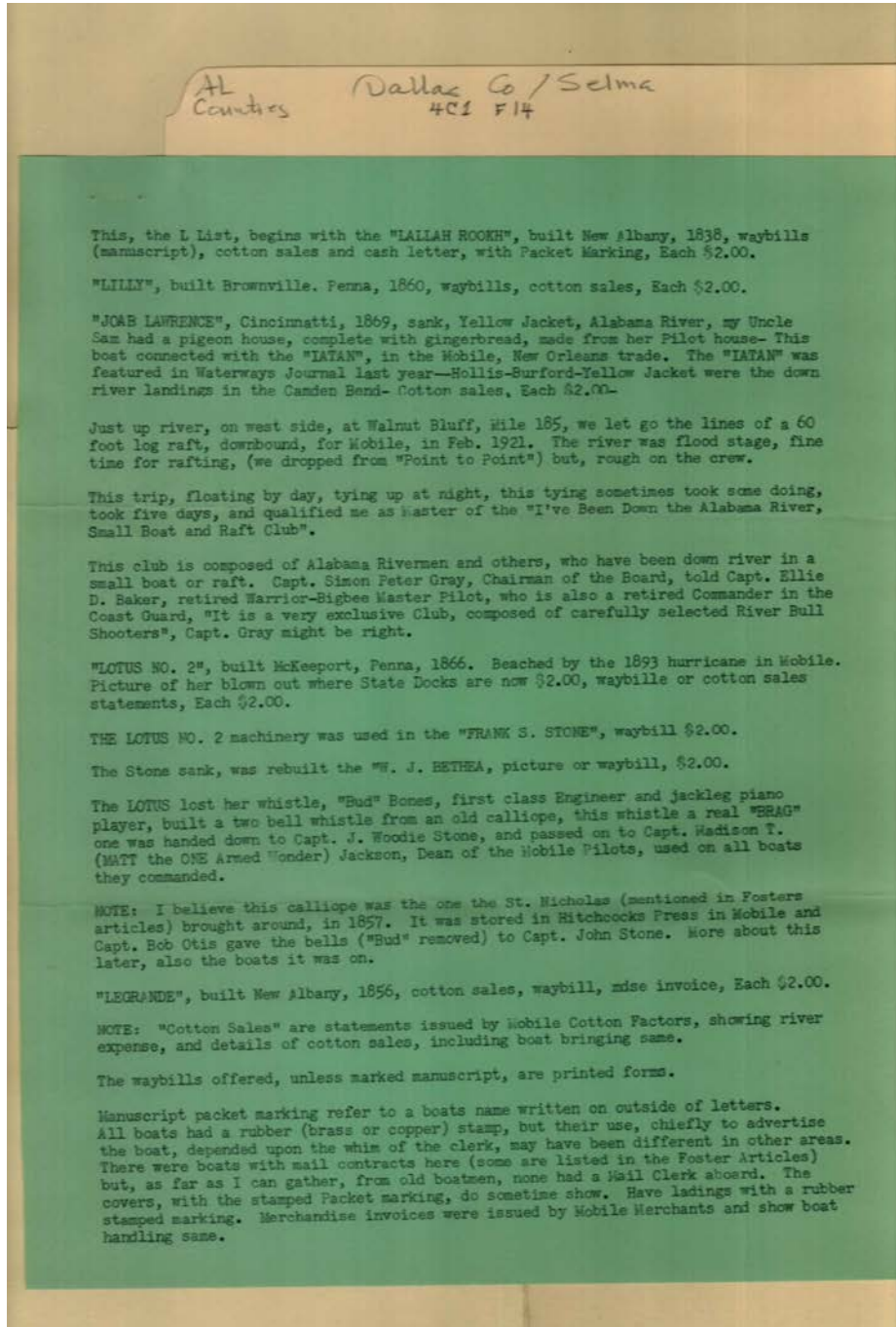
Places:

Selma, AL

Types:

correspondence

Frances Cabaniss Roberts Collection: Series 4, Subseries C, Box 1, Folder 14
 Dallas County and Cahaba Historical Commission Various Correspondence, 1960 - 1963
 Image 4 r04c01-14-000-0037 [Contents](#) [Index](#) [About](#)



Names:

Baker, Ellie D.,
 Captain
 Bones, Bud
 Gray, Simon Peter,
 Captain

Jackson, Madison T.,
 Captain
 Mobile Cotton
 Factors
 Otis, Bob, Captain

Stone, J. Woodie,
 Captain
 Stone, John, Captain
 Frank S. Stone
 Iatan
 Joab Lawrence

Lallah Rookh
 LeGrande
 Lilly
 Lotus No. 2
 W. J. Bethea

Types:

newsletter

steamboat

Frances Cabaniss Roberts Collection: Series 4, Subseries C, Box 1, Folder 14
 Dallas County and Cahaba Historical Commission Various Correspondence, 1960 - 1963
 Image 6 r04c01-14-000-0039 [Contents](#) [Index](#) [About](#)

AL
 Counties Dallas Co / Selma
 4C1 F14

Bells from calliope mentioned in Lotus offering probably were the St. Nicholas-

"ST. CHARLES", sister boat to the St. Nicholas, built New Albany, 1856, became the Daily Line Saturday Packet after the "Cuba" sank at Davis Lndg--Bob Otis, Master-waybills, cotton sales, Each \$2.00.

Other Daily Line Packets, and day of departure-

Monday, "Wm JONES JR", built Mobile, to race the "Cuba" to Montgomery, the Jones lost, details of race in Foster Articles- picture of the Jones (from an old painting), at Selma, \$2.00- also waybills, each \$2.00-

Tuesday- MESSENGER, see above-

Wednesday, "MAGNOLIA", Jeffersonville, 1852, sank Selma, 1867- B. F. James, Master, She had the finest Cabin of all, and, was put up for stock in Daily line, by Capt. James- have pictures, from line drawings, of this vessel loading cotton at Claiborne- one view shows close up details, the other an overall picture of boat, and the 365 step covered cotton slide- each \$2.00--also waybills, ladings, cotton sales, mdse invoice, and letter with manuscript markings, ea \$2.00-

Thursday, "CREMONA", New Albany, 1852, A. H. Johnson, Master, named for Cremona, Italy by Capt Johnson, a music lover, cotton sales, letter, letter markings ea \$2.00-

Friday-"EMPRESS", Geo Kirk, Master, Waybills, cotton sales, ea \$2.00-

Saturday- "CUBA", race horse of the rivers, replaced by the St Charles, when Cuba sank at Davis Lndg, cotton sales the Cuba- waybills, cotton sales, the St. Charles ea \$2.00-

Sunday- Different Smaller boats handled the Sunday trade-

Special for this list, waybill and/or ladings, cotton sales, mdse invoice issued by packets (Mobile) in 1850s- Alice Vivian- Ambassador- Cherokee- Admiral- Elix Battle- Fashion Farmer- Each \$2.00--

Also issued by boats of the 1870s - 90s-

ALABAMA- Carrier- Mary- Mary Elizabeth- Brandish Johnson- Era No. 9- Mary M- Hattie B. Moore- D. L. Tally- Each \$1.50---

SPECIAL-

This frankly is a "Go for Broke" list, to put the plan of reprinting the Foster Articles before YOU-, and I offer any item, on this list, except books, including the Foster Articles, IF THEY ARE REPRINTED, in lots of 100 (one hundred), or more, assorted items, for \$1.50 each- offer good until Feb. 10.

Special Mississippi River Pictures- 8 by 10 -- Each \$1.00

Lower-

Little Rufus- - -Kate Adams - - -La Belle Reviere (movie name of "Loving Kate"

Upper Mississippi-

Last Chance - - - Lilly - - (U. S. Engineer) - - - L. W. Crane & Group- - -

Lady Grace & Group - - - Lydia Vansant- - -

Names:

James, B. F., Master	Carrier	Hattie B. Moore	Magnolia
Johnson, A. H., Master	Cherokee	Kate Adams	Mary Elizabeth
Kirk, George, Master	Cremona	La Belle Reviere	Mary M
L. W. Crane & Group	Cuba	Lady Grace	Mary
Admiral	D. L. Tally	Last Chance	Messenger
Alice Vivian	Elix Battle	Lilly	St. Charles
Ambassador	Empress	Little Rufus	Upper Mississippi
Brandish Johnson	Era No. 9	Loving Kate	William Jones, Jr.
	Fashion Farmer	Lydia Vansant	

Types:

newsletter	steamboat
------------	-----------

Frances Cabaniss Roberts Collection: Series 4, Subseries C, Box 1, Folder 14
 Dallas County and Cahaba Historical Commission Various Correspondence, 1960 - 1963
 Image 7 r04c01-14-000-0040 [Contents](#) [Index](#) [About](#)

Al
 Counties Dallas Co / Selma
 401 F14

PICTURES:

Tombigbee Warrior Towboats - 6 by 10, ea \$2.00-

E. DOUGLASS, built, Weaska, Minn, 1871, using machinery of the Weirhauer, sold 1880s, to Pickley Bros, Mobile, and to Black Warrior Lbr Co, Demopolis, 1908, Dismantled, 1916, machinery was used in "Twirla Sharp"-

MARTHA J. HENNAN, built Beardstown, Ill, 1880, came to Mobile, 1908, operated to Pickensville Ala, Little Bigbee River, Destroyed by the 1927 Hurricane in Mobile- Her Pilots were Capt H. E. (Buck) Benson, and Capt. C. Mark Cole, the Civil War hero of the Union Navy at Vicksburg-

Also in this picture is the E. DOUGLASS", drydocked in a Coal Barge in Demopolis, Ala,- The Douglass was very fast- hull shaped like a fine cigar, and once ran from lock 6 to Lock 5, Warrior River, 20.5 miles, in 1 hour and 15 minutes-

ELLA MADSON, in ways, Knowwood (near Demopolis, Ala), maiden trip July 4, 1916- built to replace the E. DOUGLASS- This boat, very powerful for her day, had 12" engines by 6' stroke- 200# steam--Sold Mississippi ints., 1927, and renamed "Col Nelson Morris", dismantled, 1930s- Capts on Bigbee- Harry E. Miller Sr- Bradley Stone- A. G. Wheatley- Harry E. Miller Jr-

TOMBIGBEE, built Jeffersonville, 1882 for U. S. Engineers Tuscaloosa, Ala, sold Rice Bros there, 1922, and to Miller Towing Co, Demopolis 1923, and, about 1928 to Southern Sand and Gravel Co, Selma, Ala., hit the pier of the old highway turnbridge here, capsized and sank instantly, late 1930s, with three lives lost-

My Grandfather, Richard E. McWilliams, was shipping a mule to Selma, by Uncle George from McWilliams Woodyard, on the Packet Mary. Braxton (the General) Bragg, the mud-clerk, had an extensive vocabulary, a big voice, and a low boiling point-

The proper form, in best mule loading circles, was- Run out two gang planks- (one mule didnt rate the stage)- a roustabout guided him with halter line- another held down on tail so he couldnt kick, and others shoved him aboard- The mule usually entered in the spirit by sitting down (Note, could have blindfolded and/or backed him aboard easily, but even the mule wouldnt have enjoyed that)-

This mule was young and frisky, (a little mustang "Yellow Jacket") and didnt wait. He went up the gang planks, across the mud deck- losing his bridle, and knocking Braxton and two deck hands down over the outside guard, jumped in the river, swam around head of the "Mary", scrambled up the bank, kicked up his heels, brayed a few times as he took off thru the pasture-

Braxton got up, threw bridle on bank and Bellowed, "Go tell old Man Dick Mc, if he wants this Dam Jackass in Selma, come down here and ride him"-
 Picture of the "Mary", \$2.00--- lading--\$1.00--

Also available, \$2.00, picture of the "Helen Burke", loading a mule, in Mobile, Capt John Mabry, Mate, an oldtimer, is standing well to one side, overseeing the operation-

BOOKS:

Anthony- Paddle Wheels and Pistols, \$3.00-
 Same- (Childrens Book Club) N. Y. 1930, \$3.00-
 Havighurst- Upper Miss, A Wilderness Saga, Farrar, 1937, good copy, in Dust Jacket, \$5.00-

Names:

Anthony,
 Benson, H. K.,
 Captain, (Buck)
 Black Warrior
 Lumber Co.
 Bragg, Braxton
 Cole, C. Mark,
 Captain

Farrar,
 Havighurst,
 Mabry, John, Captain
 McWilliams, Richard
 E.
 Miller Towing Co.
 Miller, Harry E., Jr.,
 Captain

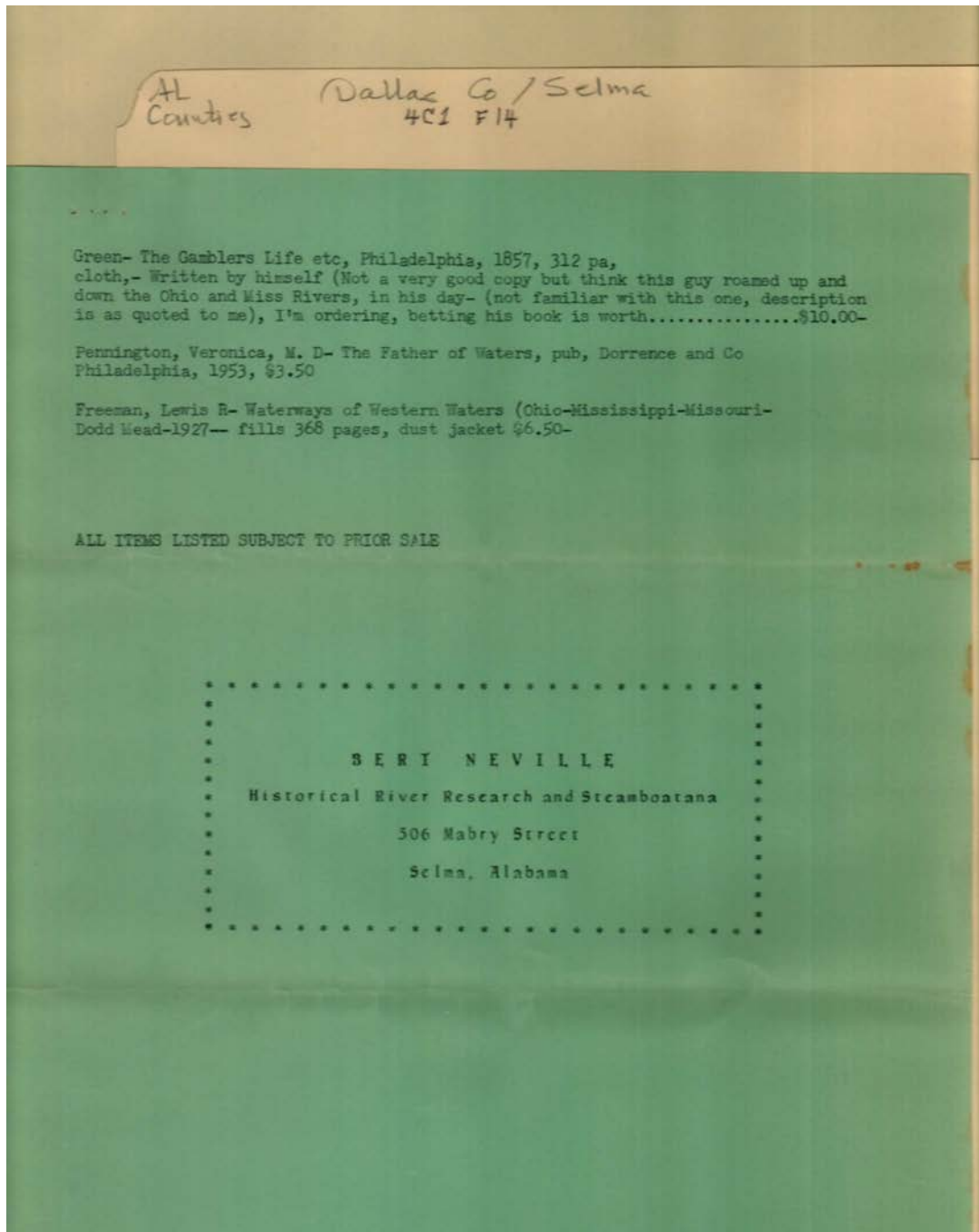
Miller, Harry E., Sr.,
 Captain
 Pickley Brothers
 Rice Brothers
 Southern Sand and
 Gravel Co.
 Wheatley, A. G.,
 Captain

Col. Nelson Morris
 E. Douglass
 Ella Madson
 Helen Burke
 Martha J. Hennan
 Mary
 Tombigbee

Types:

newsletter

steamboat



Names:

Freeman, Lewis R.
Historical River
Research

Neville, Bert
Pennington, Veronica,
MD

Steamboatana
Green

Places:

Selma, AL

Types:

newsletter



Names:

Neville, Bert

Roberts, Frances, Dr.

Places:

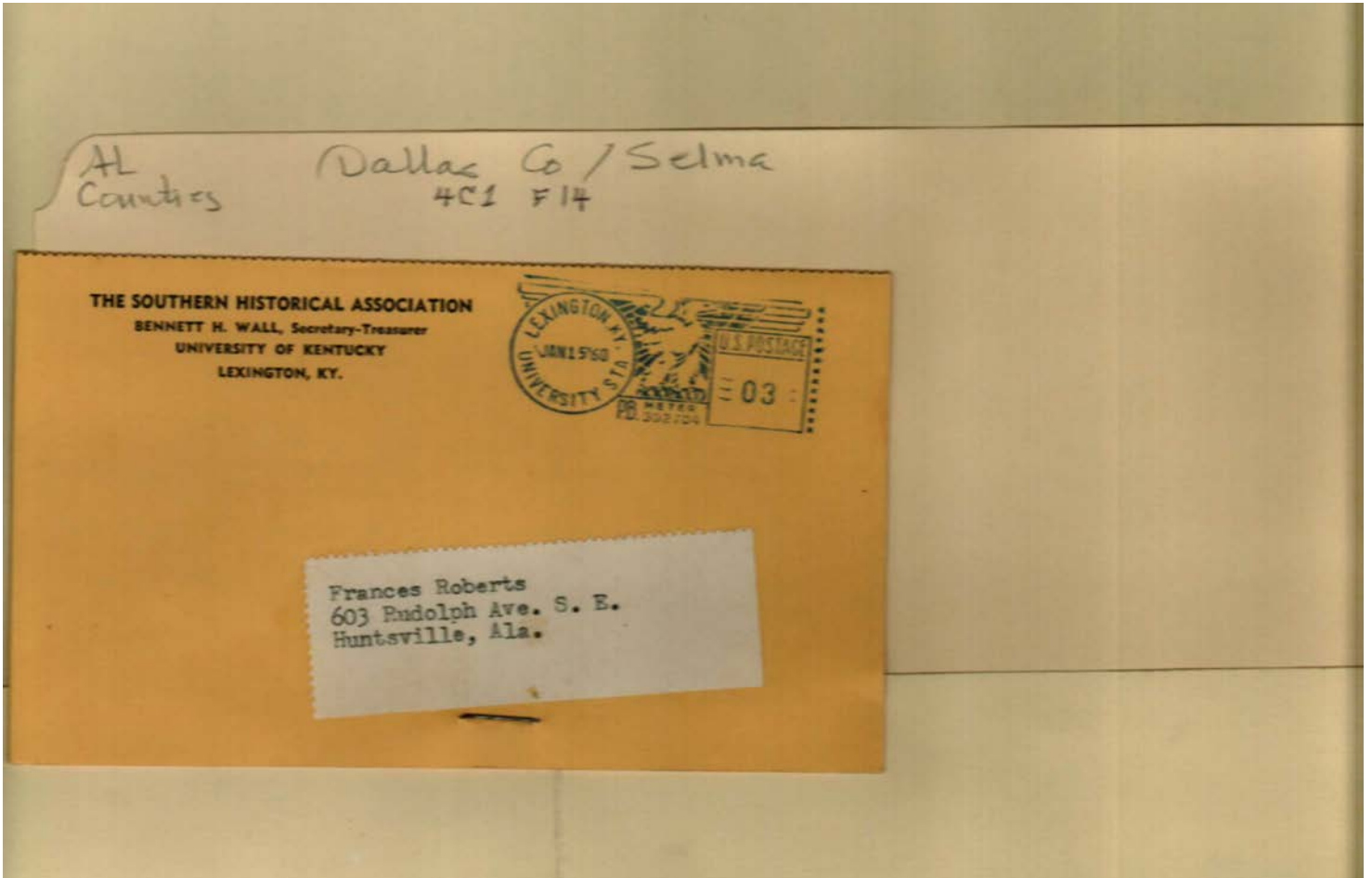
Selma, AL

Types:

envelope

Dates:

Jan 16, 1960



Names:

Roberts, Frances

Wall, Bennett H.

Places:

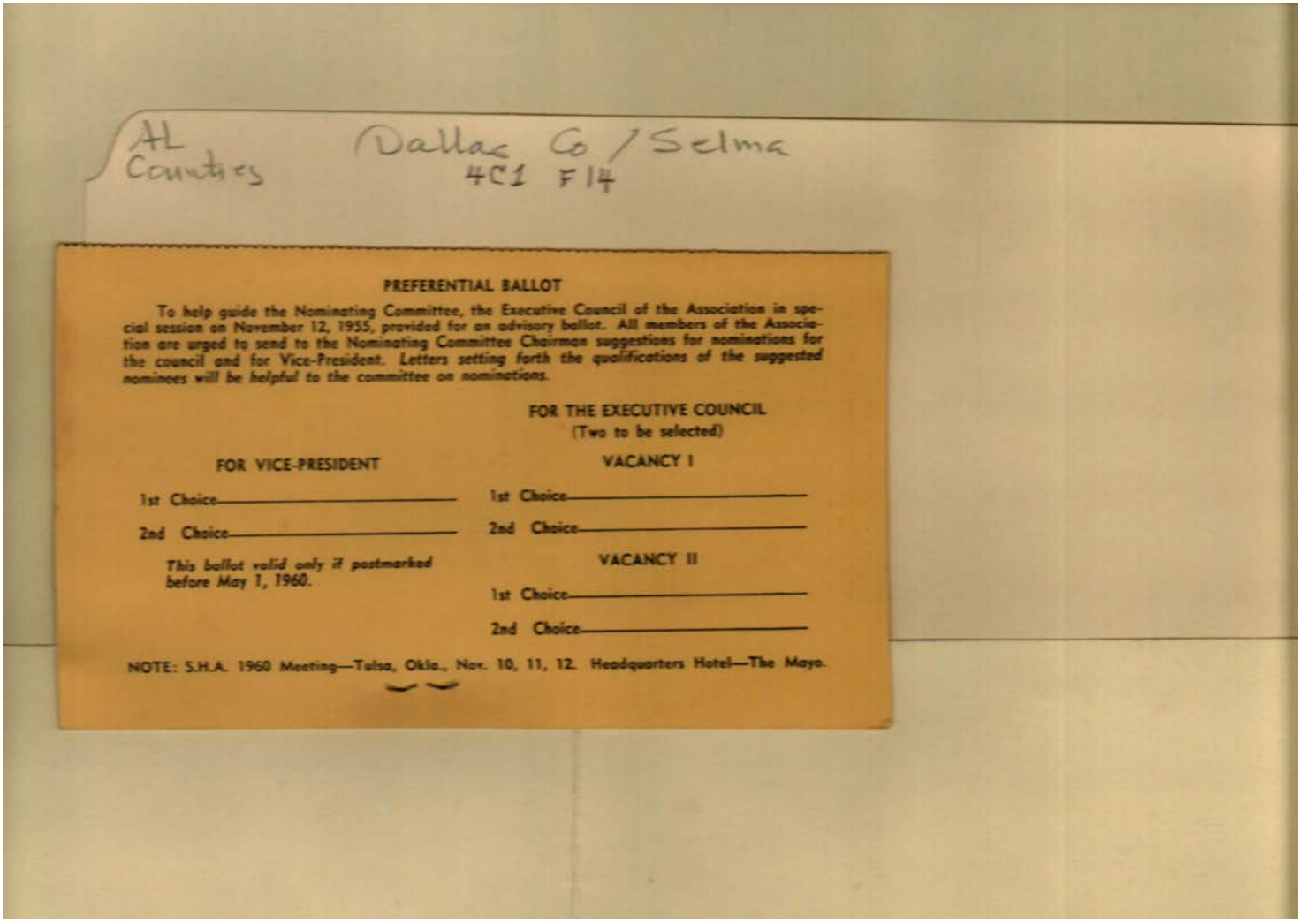
Lexington, KY

Types:

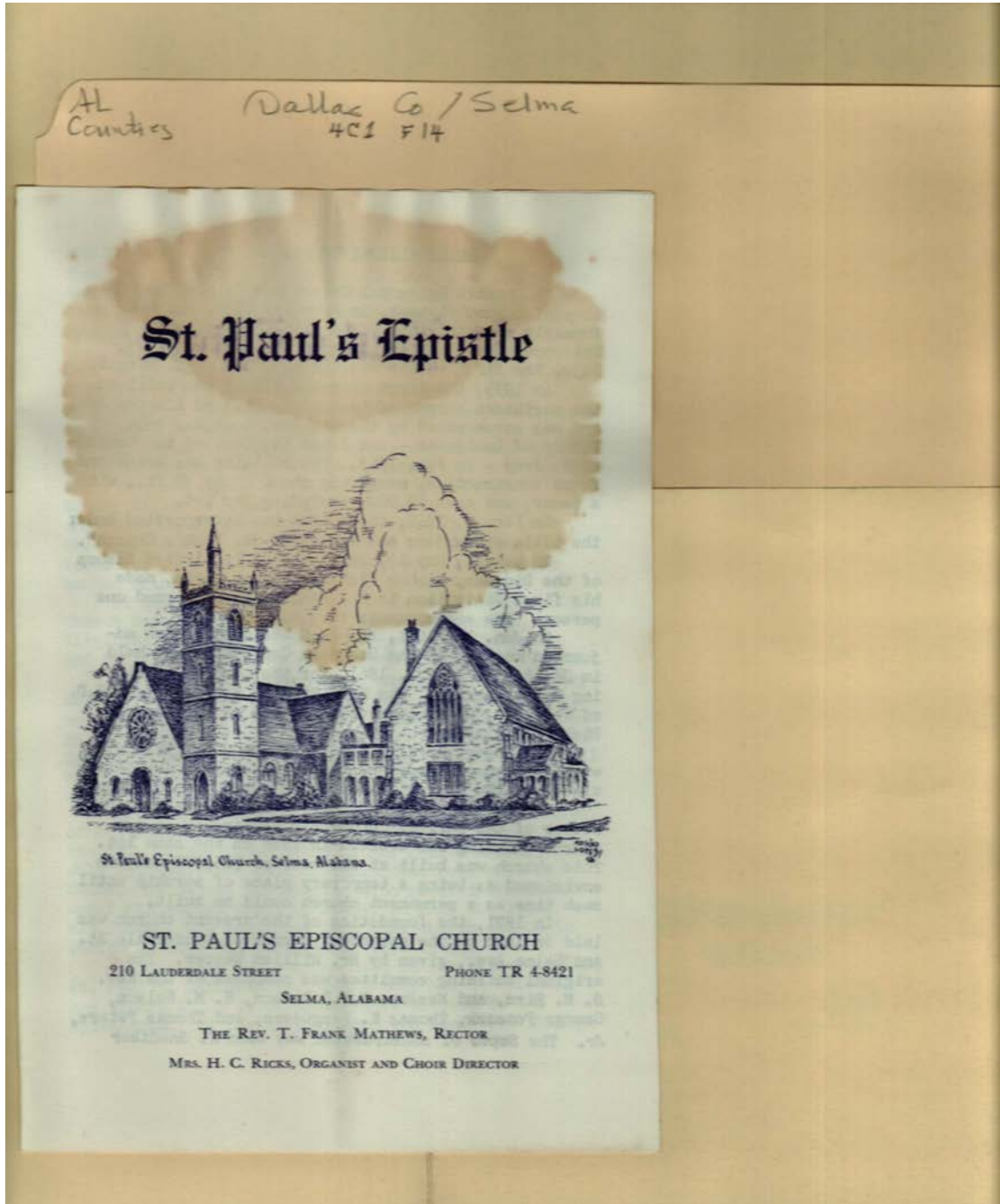
card

Dates:

Jan 15, 1960



Types:
card



Names:

Mathews, T. Frank,
Rev.

Ricks, H. C., Mrs.

St. Paul's Episcopal
Church

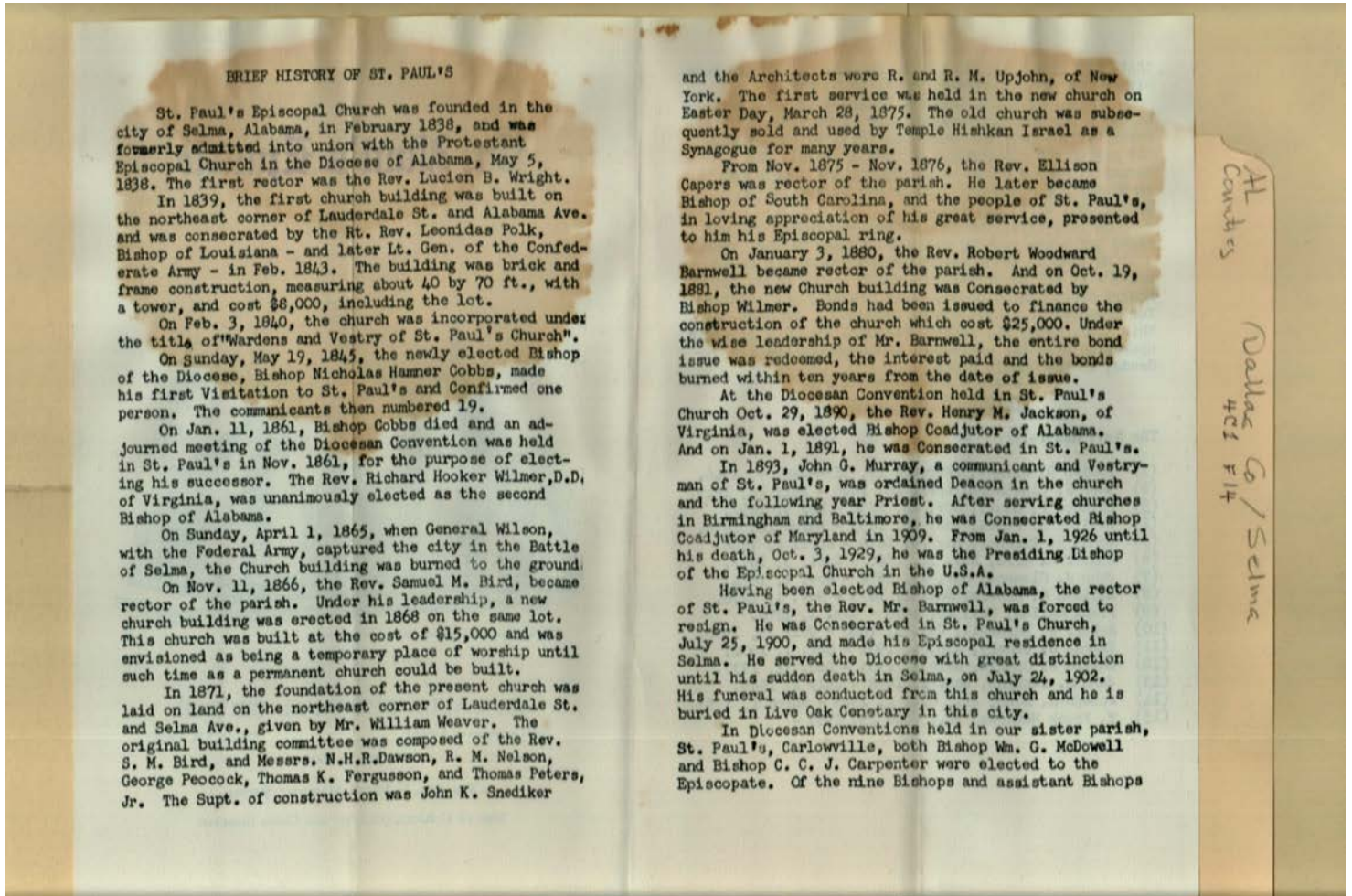
St. Paul's Epistle

Places:

Selma, AL

Types:

bulletin

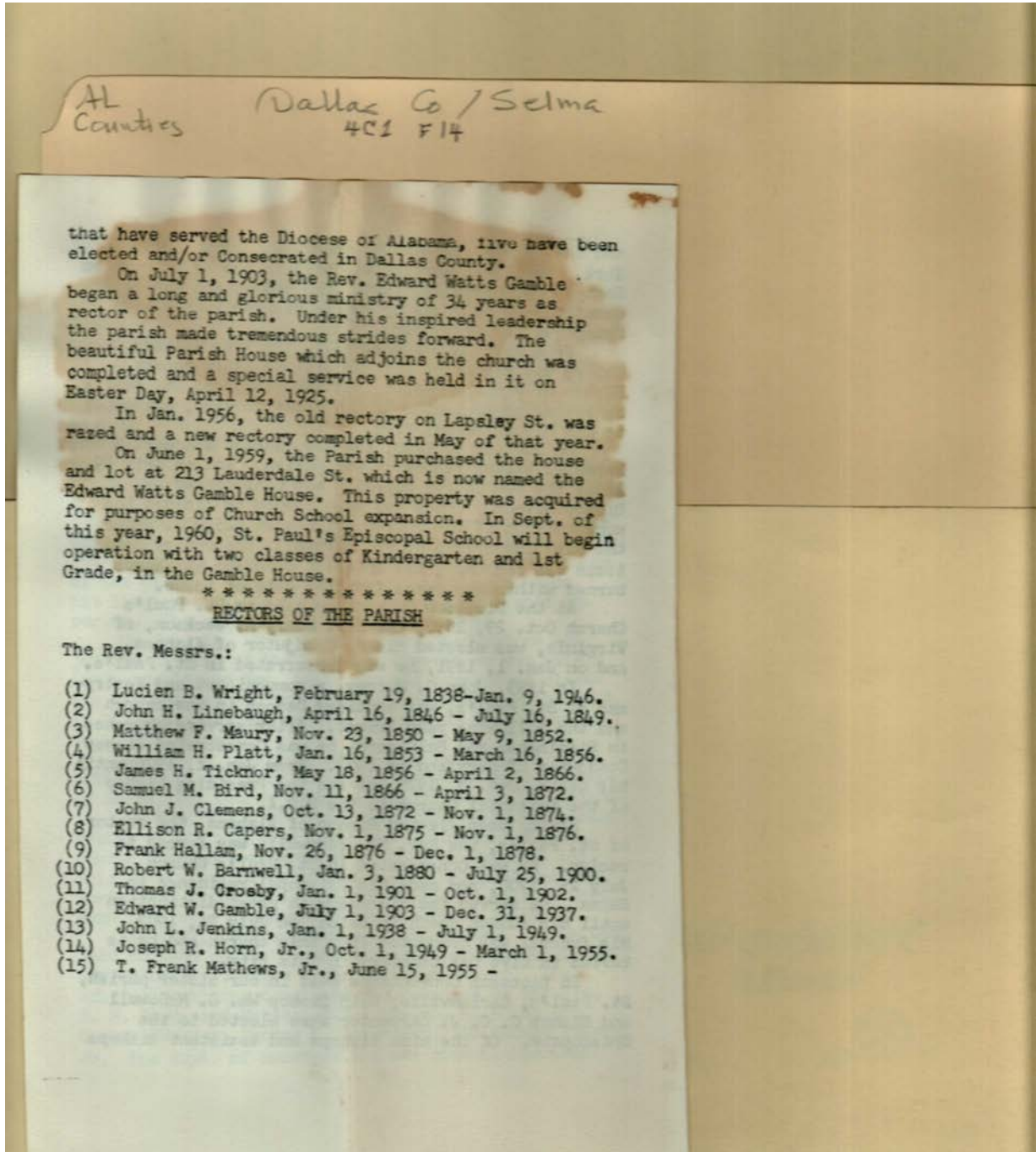


Names:

Barnwell, Robert	Dawson, N. H. R.	Murray, John G.	Temple Hishkan
Woodward, Rev.	Fergusson, Thomas	Nelson, R. M.	Israel Synagogue
Bird, Samuel M.,	K.	Peacock, George	Upjohn, R.
Rev.	Gray, Simon Peter,	Peters, Thomas, Jr.	Upjohn, R. M.
Capers, Ellison, Rev.	Captain	Polk, Leonidas, Rev.	Weaver, William
Carpenter, C. C. J.,	Jackson, Henry M.,	Snediker, John K.	Wilson, General
Bishop	Rev.	St. Paul's Episcopal	Wright, Lucien B.,
Cobbs, Nicholas	McDowell, William	Church History	Rev.
Hamner, Bishop	G., Bishop		

Types:

bulletin




Names:

Barnwell, Robert	Crosby, Thomas J.,	Linebaugh, John H.	Ticknor, James H.,
Woodward, Rev.	Rev.	Rev.	Rev.
Bird, Samuel M.,	Gamble, Edward	Mathews, T. Frank,	Wright, Lucien B.,
Rev.	Watts, Rev.	Rev.	Rev.
Capers, Ellison R.,	Hallam, Frank, Rev.	Maury, Matthew F.,	
Rev.	Horn, Joseph R., Rev.	Rev.	
Clemens, John J.,	Jenkins, John J., Rev.	Platt, William H.,	
Rev.		Rev.	

Types:

bulletin



Kirkpatrick Home
 Originally built by "Shoestring Barker," a prominent resident of Cahaba, and said to have cost approximately \$30,000, this impressive brick residence, two stories in height with large Corinthian columns, was later purchased and occupied by Mr. S. M. Kirkpatrick, who moved to Selma in 1895. He was the grandfather of Dr. Sam M. Kirkpatrick, a prominent physician in Selma today. It was the last Cahaba structure to survive, being destroyed by fire in 1935.*

It is recorded that in early historic times there were numerous evidences of mounds and aboriginal signs in what was later the lower end of the town of Cahaba. Even today shipped objects may be found.

Traces of earthworks were perceptible at Cahaba until just prior to 1870. It was thought they were remains of the French trading post, Cah, established about 1750. These were probably, however, remains of the aboriginal Indian mounds. It is assumed the settlements at the mouth of the river were by the Cahabes. An urn-burial is indicated at those points along the river, where research has been conducted, this fact would substantiate this claim.

* Acknowledgment is herewith gratefully extended to T. G. Gayle, Selma attorney, for permission to use material from Anna Gayle Fry's *MEMORIES OF OLD CAHABA*, a fascinating account of the life of that period and the only formal record of many Cahaba happenings.

The CAHABA HISTORICAL COMMISSION, charged with maintaining Cahaba's monuments and such forms of restoration as might seem practical, was established by legislative act in 1943. Members of the Commission today are T. G. Gayle, Chairman; Joseph T. Callaway, Fannie Ellis, Mrs. B. Craig, Treasurer and M. L. Miles, Secretary, all of Selma, Alabama. The current Commission has already voted unanimously to request statewide enlargement of the group at the 1961 session of the Legislature and to seek funds for the building of a replica of Alabama's First Storehouse on the original site at Cahaba.

Published By
**TOURIST AND CONVENTION COMMITTEE
 SELMA AND DALLAS COUNTY
 CHAMBER OF COMMERCE
 SELMA, ALABAMA**

IMPORTANT DATES IN THE HISTORY OF CAHABA

- 1528 - First known settlement, an Indian village called "Casite."
- 1713 - Crozart, Paris merchant, receives land grant from King Louis XV.
- 1728 - French trading post, listed as Cah.
- 1740 - Approximate date post was abandoned due to Indian attacks.
- 1816 - First election precincts of Montgomery County, which then embraced all Central Alabama, established.
- 1818 - Establishment of Dallas County, December 13, 1819, Cahaba made County seat.
- 1819 - Cahaba incorporated and made Alabama's first permanent State Capital.
- 1820 - First session of the Alabama State Legislature. Cahaba had two newspapers, a land office, State bank, stores, private boarding houses, hotels and schools.
- 1822 - 184 town lots sold in Cahaba for more than \$120,000.
- 1825 - LaFayette visited Cahaba for three days. Cahaba inundated by greatest flood in its history.
- 1826 - Legislature moved Capital from Cahaba to Tuscaloosa.
- 1828 - Cahaba practically abandoned.
- 1830 - January 13, 1830, Alabama donated old State Capitol, and land on which it stood, to Dallas County.
- 1830 - Cahaba rises again to become in two or three years the most important shipping point on the Alabama River.
- 1833 - Another flood sweeps over Cahaba.
- 1836 - Rebuilding begun.
- 1840 - In May the "Cahaba Church" was dedicated. This church was used the first Sunday in each month by the Episcopalians; the second Sunday by the Cumberland Presbyterians; by the Methodists on the third Sunday; by the Presbyterians on the fourth Sunday; and by other denominations making the first appointment on the fifth Sunday.
- 1850 - Cahaba reaches its peak growth, some estimating it as high as 5,000 inhabitants.
- 1851 - William Rufus King, United States Senator from Alabama, and later a United States Minister to France, was elected Vice President of the United States in the administration of President Franklin Pierce.
- 1859 - Railroad built from Cahaba to Marion, Alabama.
- 1861 - April 16, "Cahaba Rifles," Company F, Fifth Alabama Regiment, C. S. A., organized.


HOW TO GET TO CAHABA

Most approaches to Cahaba, it is concluded, will be through the City of Selma.

The Hotel Albert, Selma, is a well-known landmark and lies in the center of the Selma business district. Leaving from that point (Broad Street), one turns immediately west off Broad onto State Highway 22 and travels approximately eight miles until he reaches the Cahaba River, which is plainly marked. Go across the Cahaba River 1/2 of a mile and there one will find a bronze marker on the right of the road, directing the traveller to turn left (South) on a county road, plainly marked "Cahaba." It is about four miles into what remains of Alabama's First Permanent State Capital.


If one is coming from the west off Highway 80, turn right (South) at Browns, Ala., on State Highway No. 5 to Safford, then turn left on State No. 22 to about one mile past Beloit, where a country road, plainly marked "To Cahaba," turns right off State No. 22.

If one travels north from Mobile on Highway 43, he turns on State 5 and proceeds 1 mile past Beloit exactly as described in the paragraph above.



OLD CAHABA

SELMA, ALABAMA



**ALABAMA'S FIRST
 PERMANENT STATE CAPITAL**

H
 Cahabas
 Dallas Co / Selma
 401 File

Names:

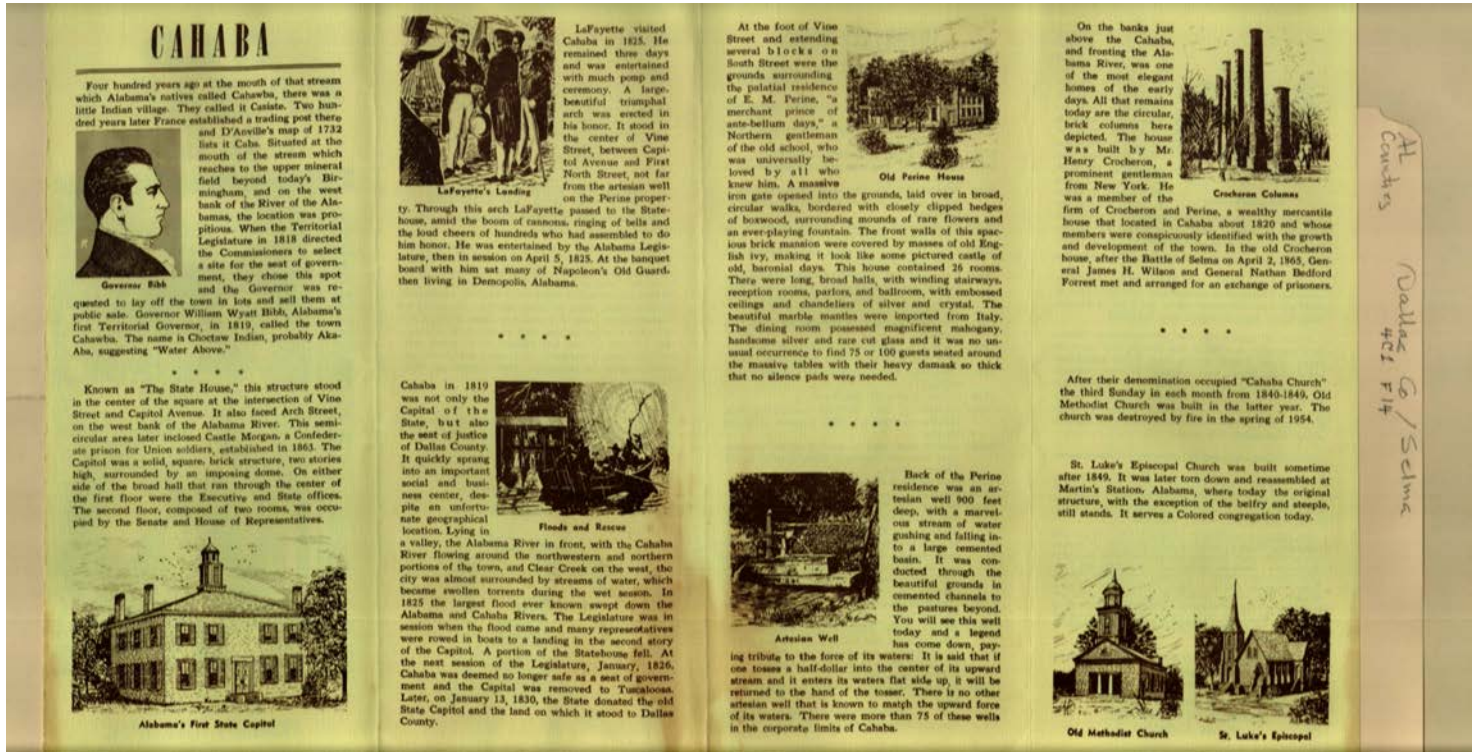
- | | | | |
|---------------------|----------------------|-------------------|------------------|
| Barker, Shoestring | Gayle, T. G. | LaFayette, | Selma & Dallas |
| Callaway, Joseph T. | King Louis XV | Miles, M. L. | County Chamber |
| Craig, William B. | King, William Rufus | Old Cahaba | Old Cahaba First |
| Crozart, | Kirkpatrick, S. M. | Pierce, Franklin, | Capital |
| Ellis, Furniss | Kirkpatrick, Sam M., | President | |
| Fry, Anna Gayle | Dr. | | |

Places:

Selma, AL

Types:

leaflet



Names:

Artesian Wells
 Bibb, William Wyatt
 Cahawba
 Crocheron & Perine
 Crocheron Columns

Crocheron, Henry
 D'Anville,
 First Capitol of
 Alabama

Forrest, Nathan
 Bedford, General
 LaFayette,
 LaFayette's Landing
 Perine, E. M.

Wilson, James H.,
 General

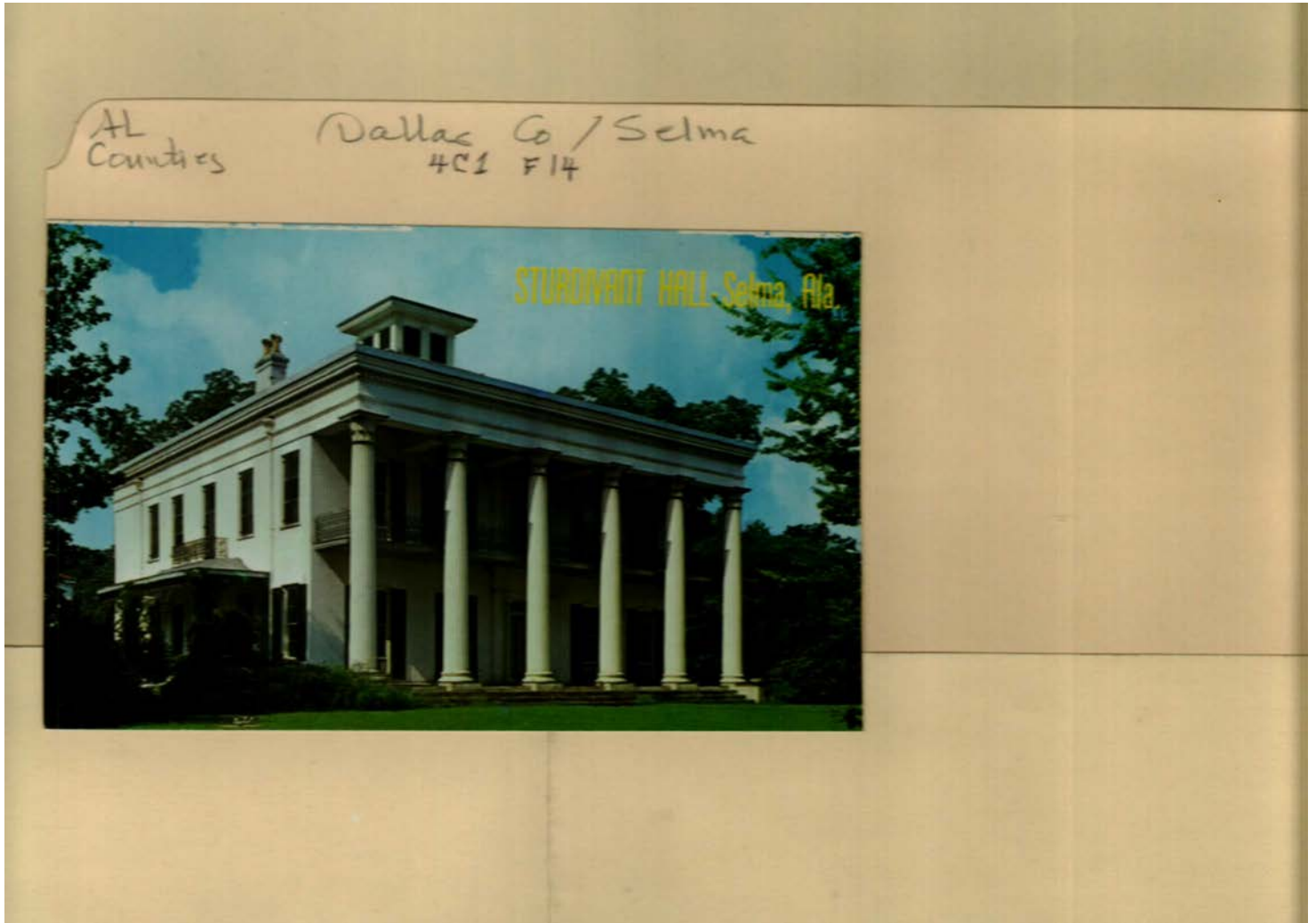
Places:

Cahaba

Types:

drawing

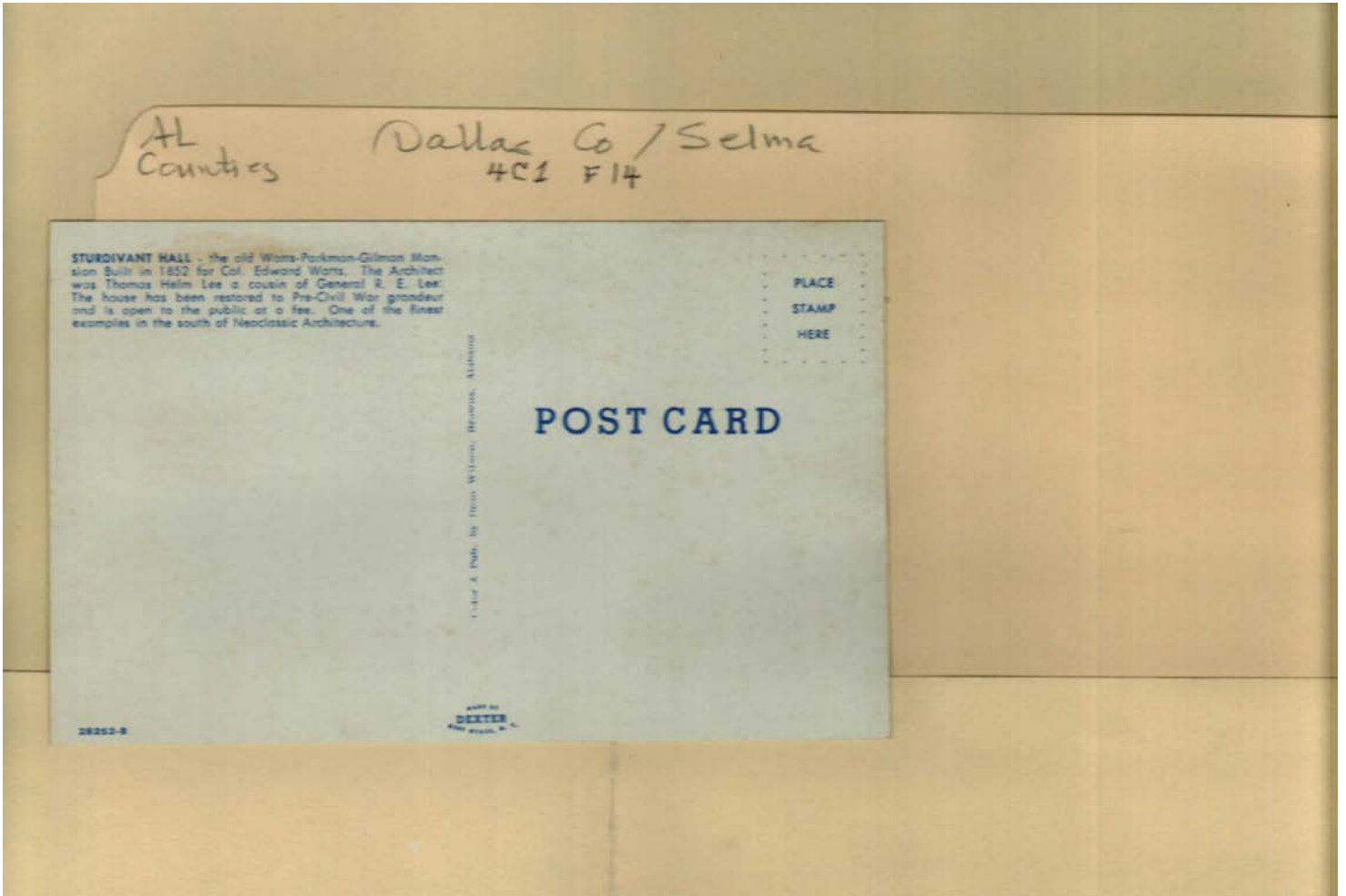
leaflet



Names:
Sturdivant Hall

Places:
Selma, AL

Types:
postcard



Names:

Lee, R. E., General
Lee, Thomas Helm

Sturdivant Hall

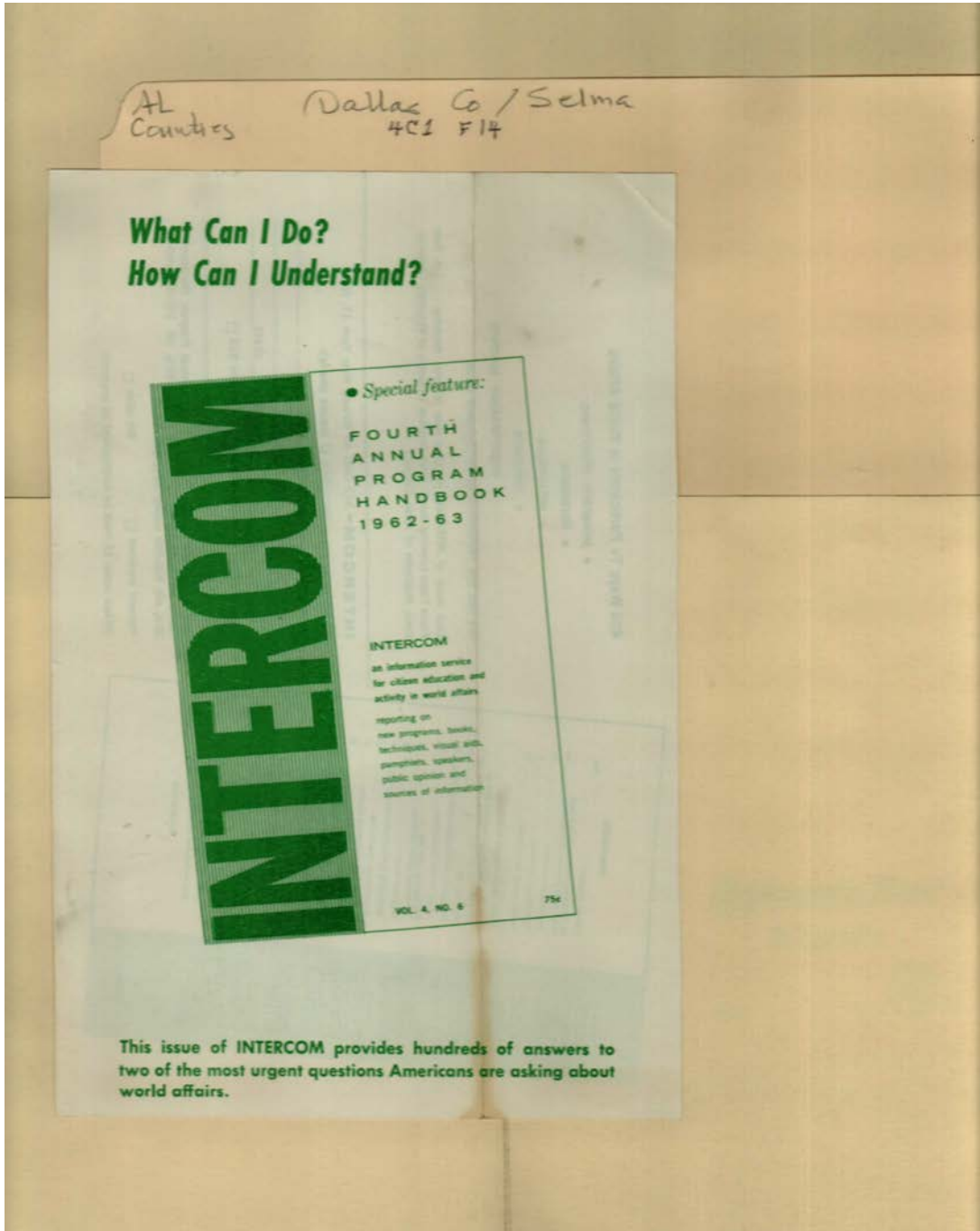
Watts, Edward,
Colonel

Watts-Parkman-
Gilman Mansion

Types:

postcard

Frances Cabaniss Roberts Collection: Series 4, Subseries C, Box 1, Folder 14
Dallas County and Cahaba Historical Commission Various Correspondence, 1960 - 1963
Image 19 r04c01-14-000-0052 [Contents](#) [Index](#) [About](#)



Names:

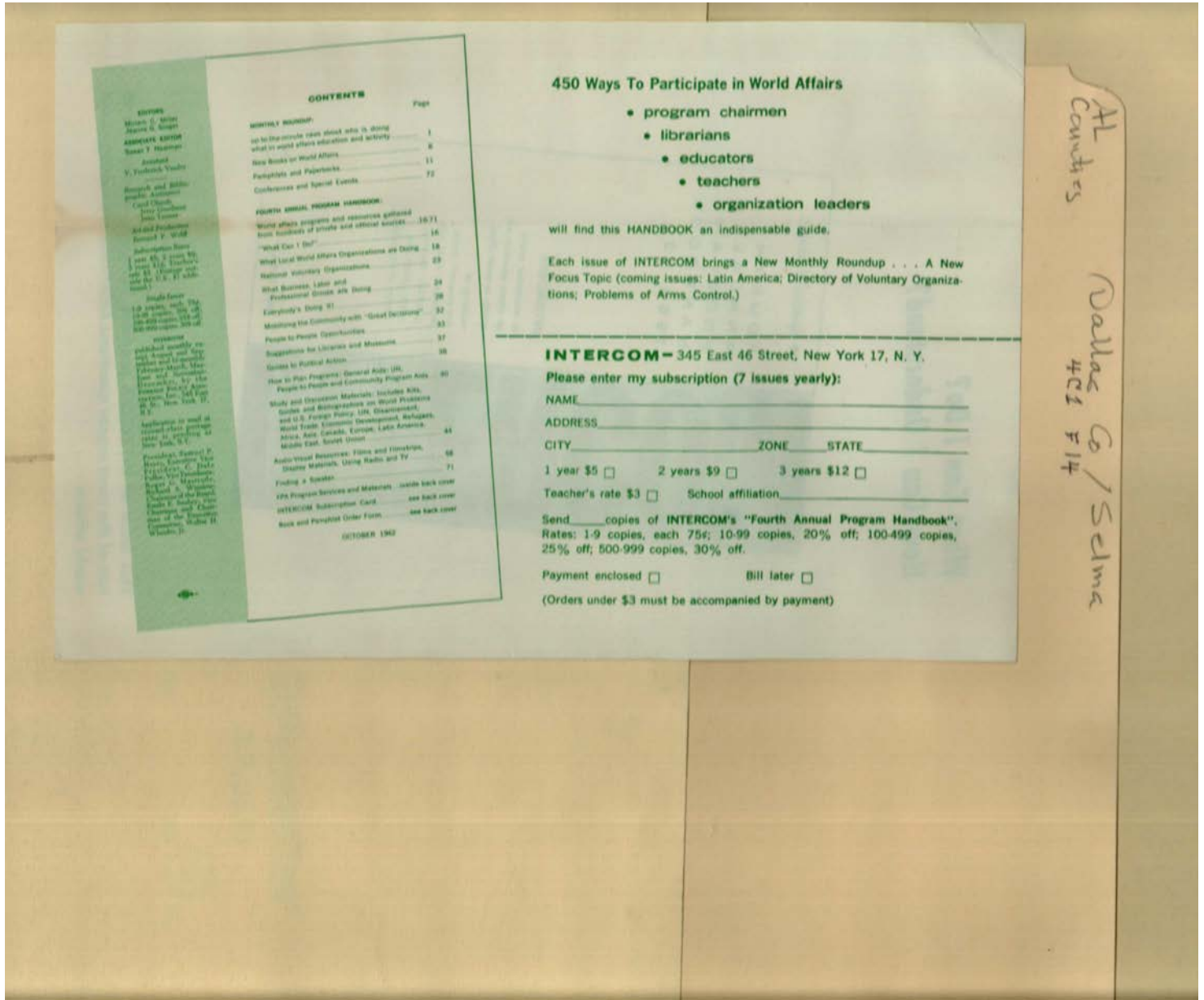
Intercom

Types:

booklet

Dates:

1962-1963



Names:

Clands, Carol
 Goolmar, Jerry

Miller, Miram C.
 Newman, Susan T.

Singer, Jeanne G.
 Turner, Jean

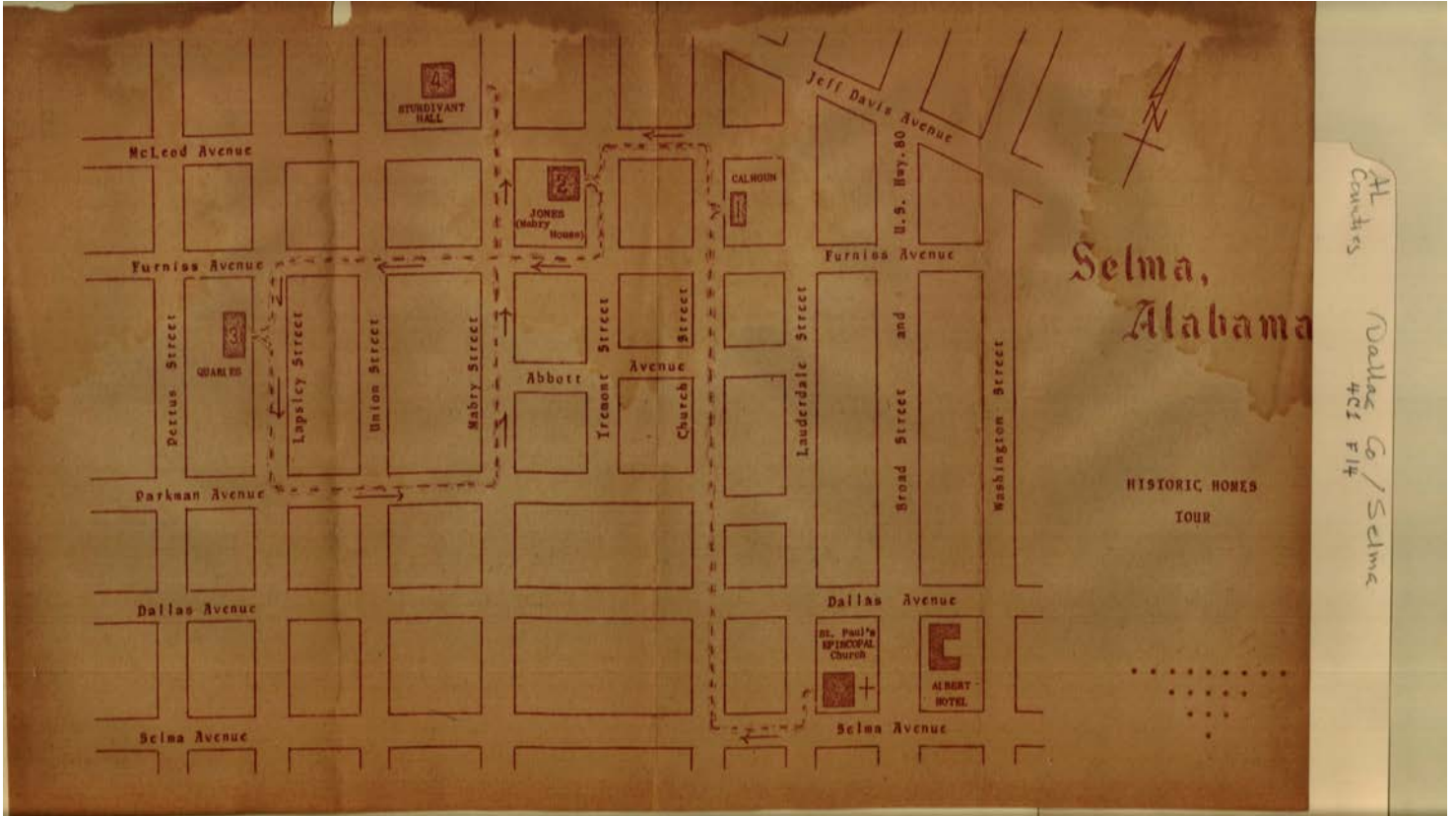
Weld, Bernard F.
 Yeader, V. Frederick

Types:

booklet

Frances Cabaniss Roberts Collection: Series 4, Subseries C, Box 1, Folder 14
Dallas County and Cahaba Historical Commission Various Correspondence, 1960 - 1963

Image 21 r04c01-14-000-0054 [Contents](#) [Index](#) [About](#)

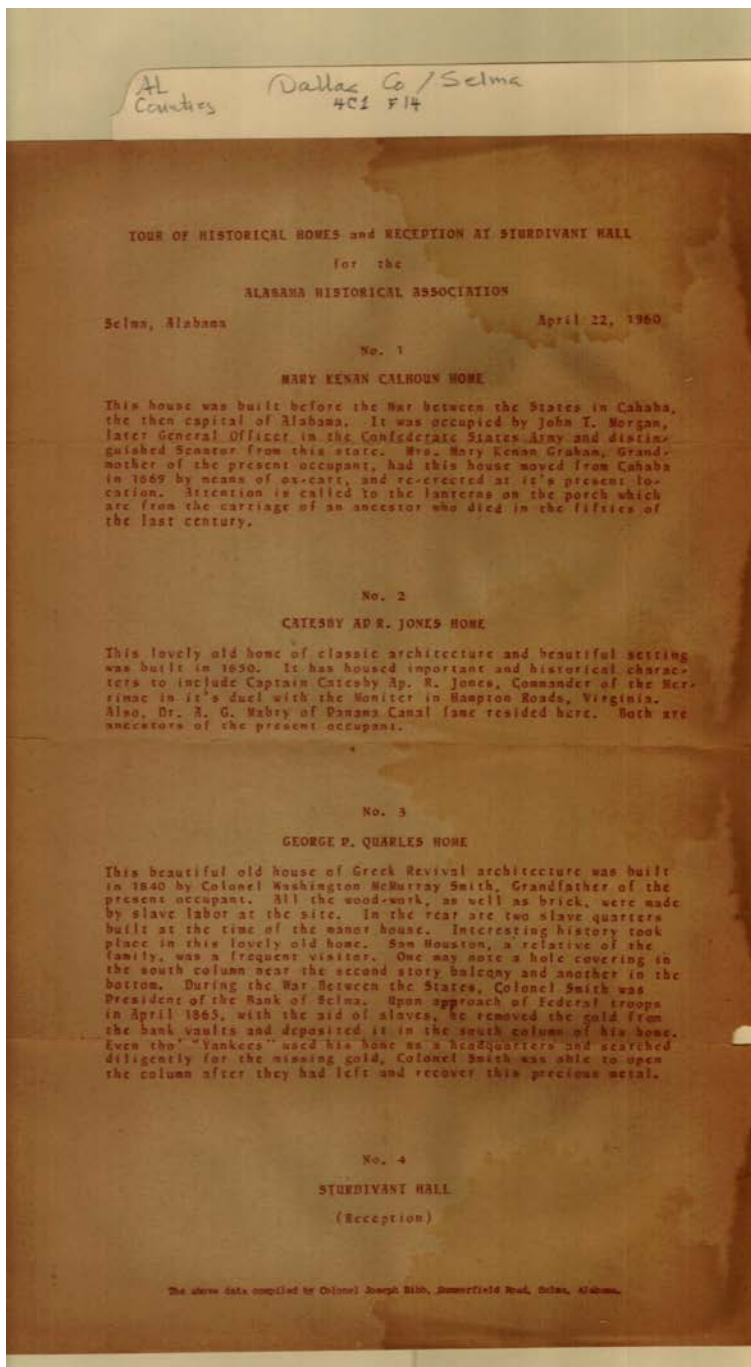


Names:

Selma Historic
Homes

Types:

map



Names:

Bibb, Joseph, Colonel
Calhoun, Mary
Kenan
Graham, Mary Kenan

Houston, Sam
Jones, Catesby Ap.
R., Captain
Mabry, A. G., Dr.

Morgan, John T.
Quarles, George P.
Selma Historic
Homes tour

Smith, Washington
McMurray, Colonel
Sturdivant Hall

Places:

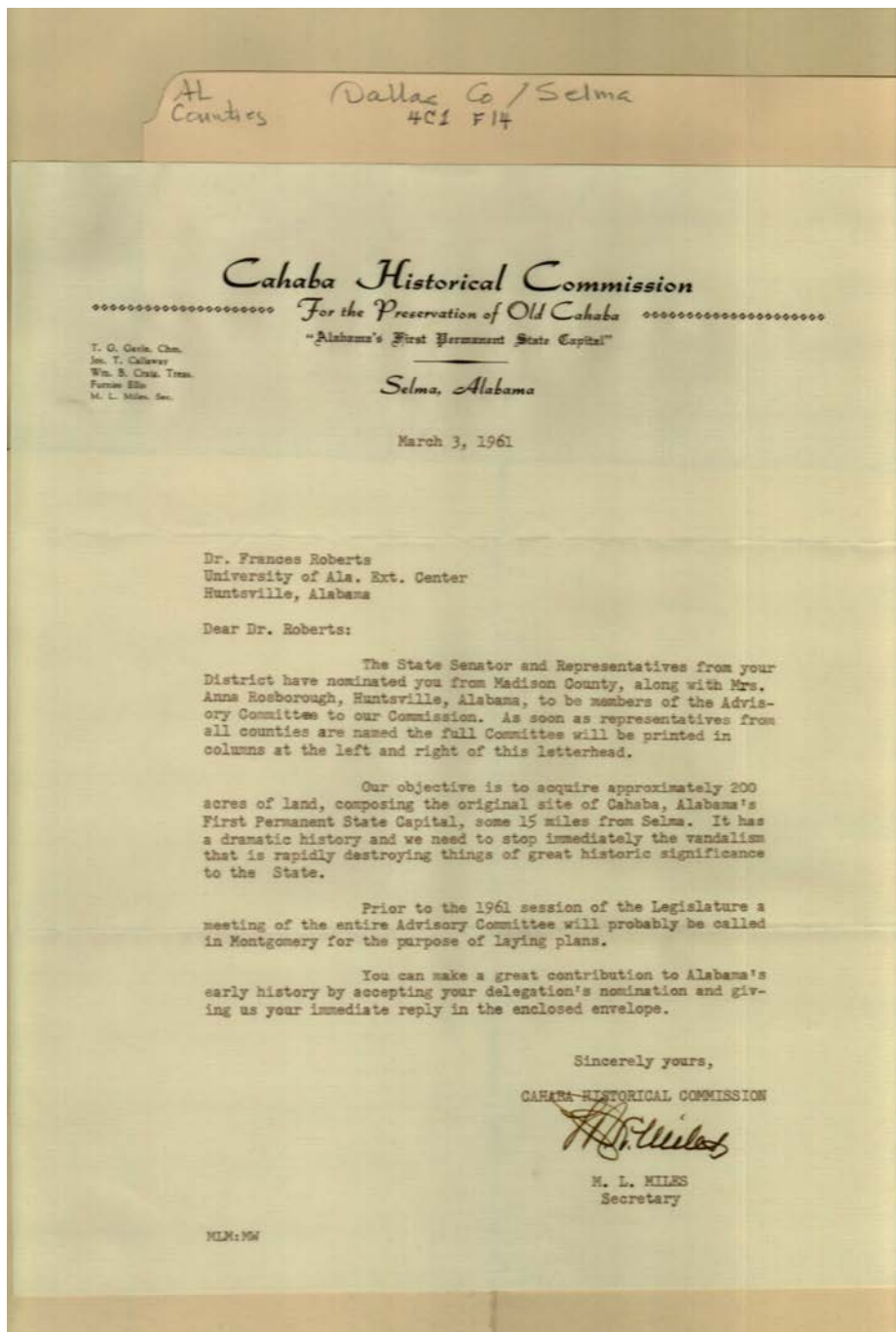
Selma, AL

Types:

leaflet

Dates:

Apr 22, 1960



Names:

Cahaba Historical
Commission
Callaway, Joseph T.

Craig, William B.
Ellis, Furniss
Gayle, T. G.

Miles, M. L.
Roberts, Frances, Dr.

Rosborough, Anna,
Mrs.

Places:

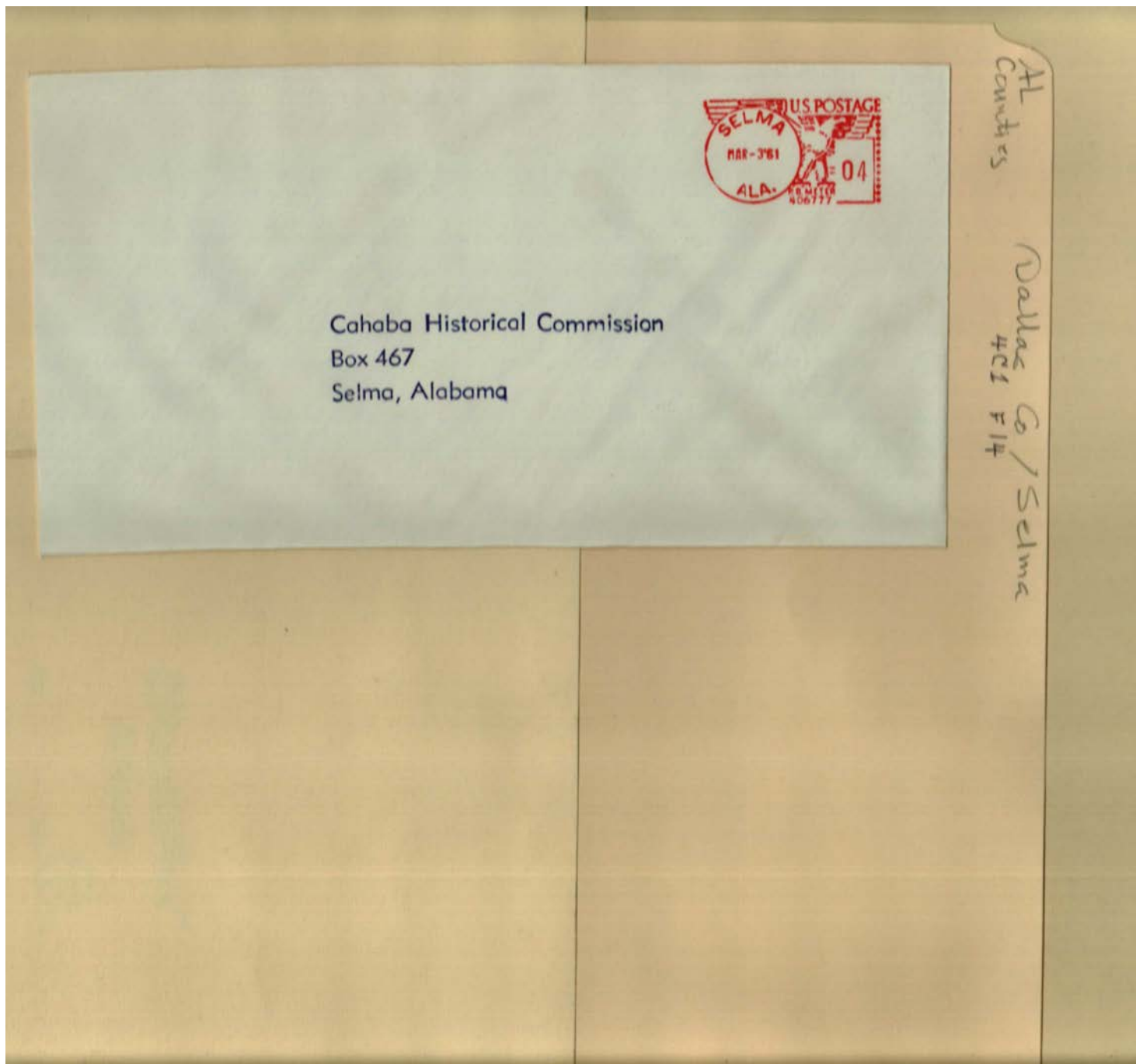
Selma, AL

Types:

correspondence

Dates:

Mar 03, 1961



Names:

Cahaba Historical
Commission

Places:

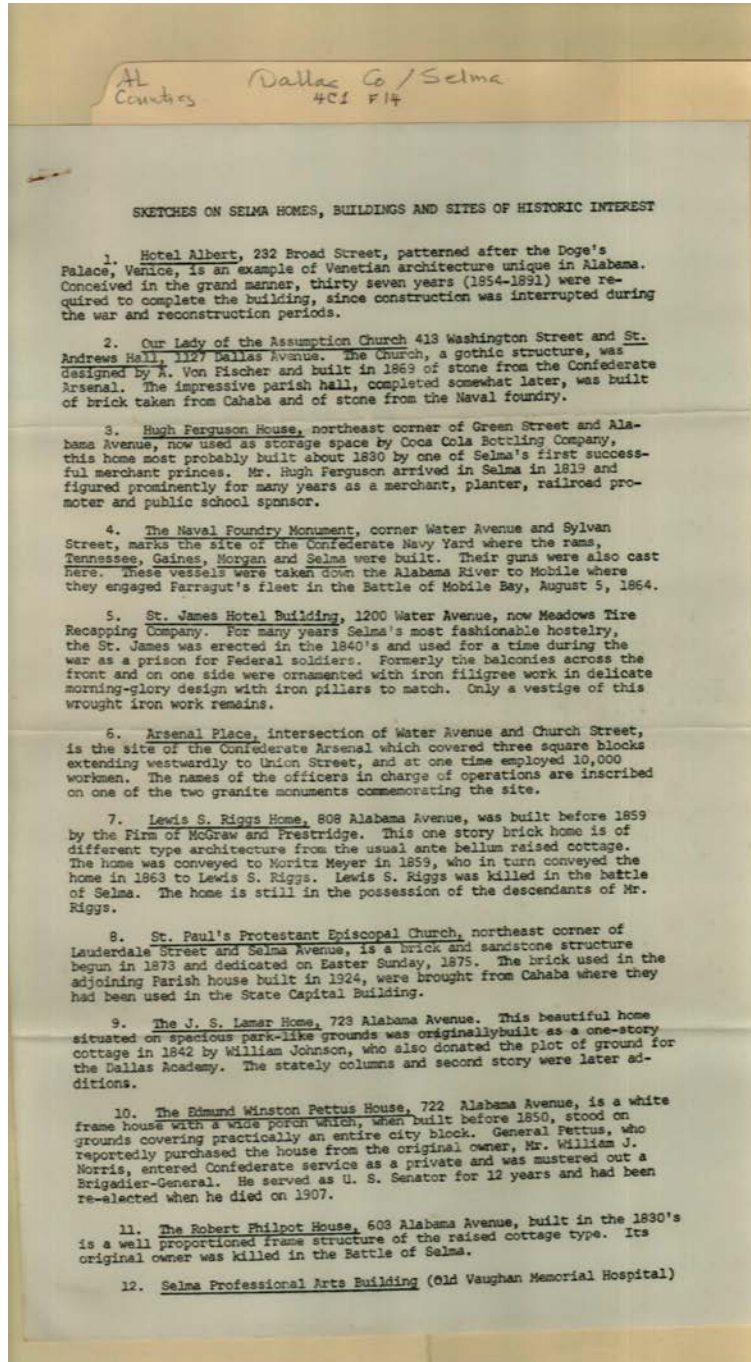
Selma, AL

Types:

envelope

Dates:

Mar 03, 1961



Names:

Arsenal Place
 Edmund Winston
 Pettus House
 Ferguson, Hugh
 Fischer, A. Von
 Hotel Albert
 Hugh Ferguson
 House
 J. S. Lamar Home

Johnson, William
 Lamar, J. S.
 Lewis S. Riggs Home
 Meyer, Moritz
 Naval Foundry
 Monument
 Norris, William J.
 Our Lady of
 Assumption Church

Pettus, Edmund
 Winston, General
 Philpot, Robert
 Riggs, Lewis S.
 Robert Philpot House
 Selma Homes,
 Buildings &
 Historic Sites

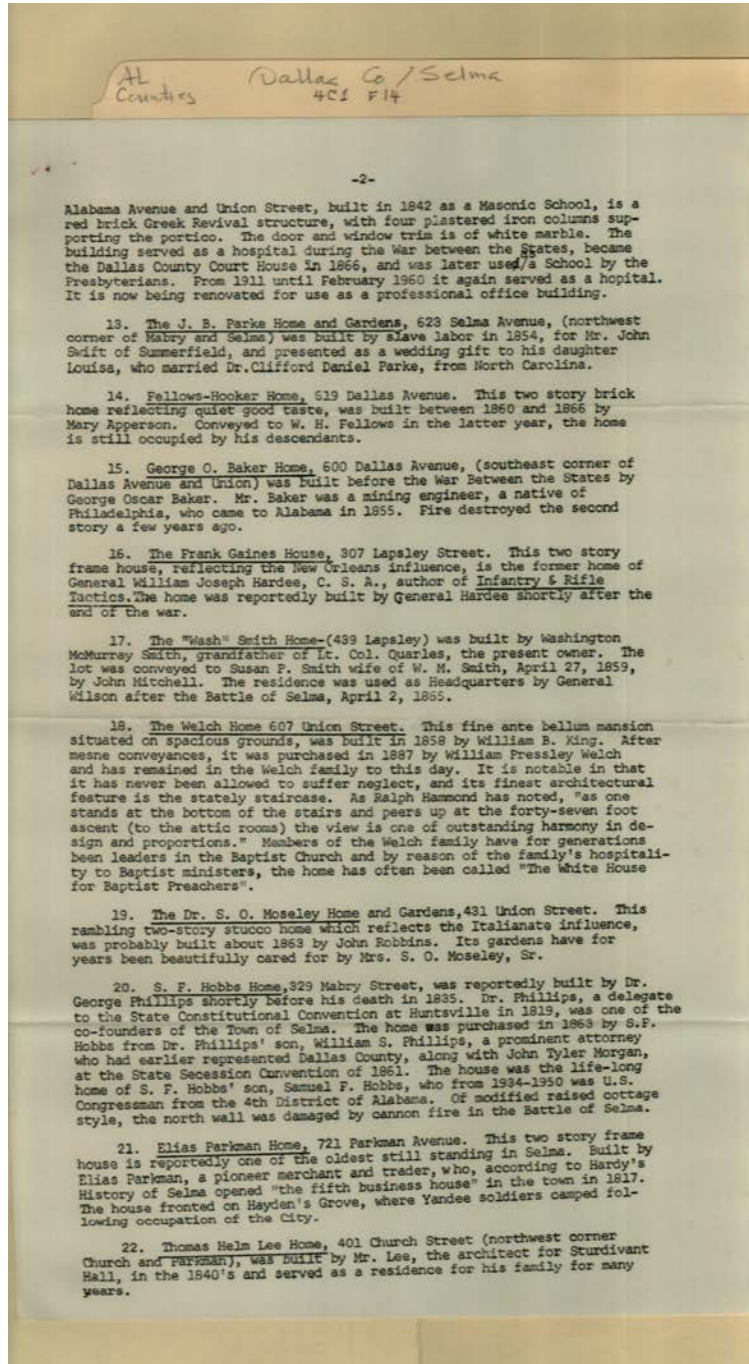
Selma Professional
 Arts Building
 St. James Hotel
 Building
 St. Paul's Protestant
 Episcopal Church
 Vaughan Memorial
 Hospital

Places:

Selma, AL

Types:
leaflet

Frances Cabaniss Roberts Collection: Series 4, Subseries C, Box 1, Folder 14
 Dallas County and Cahaba Historical Commission Various Correspondence, 1960 - 1963
 Image 26 r04c01-14-000-0062 [Contents](#) [Index](#) [About](#)



Names:

- | | | | |
|---------------------|--------------------|-----------------------|-------------------|
| Apperson, Mary | Hammond, Ralph | Moseley, S. O., Dr. | Smith, Susan P. |
| Baker, George Oscar | Hardee, William | Moseley, S. O., Sr. | Smith, W. M. |
| Dr. S. O. Moseley | Joseph, General | Mrs. | Smith, Washington |
| Home & Gardens | Hardy, | Parke, Clifford | McMurray |
| Elias Parkman Home | Hobbs, S. F. | Daniel, Dr. | Swift, John |
| Fellows, W. H. | Hobbs, Samuel F. | Parke, J. B. | Swift, Louisa |
| Fellows-Hooker | J. B. Parke Home & | Parkman, Elias | Thomas Helm Lee |
| Home | Gardens | Phillips, George, Dr. | Home |
| Frank Gaines House | King, William B. | Phillips, William S. | Welch Home |
| Gaines, Frank | Lee, Thomas Helm | Quarles, Lt. Colonel | Welch, William |
| George O. Baker | Mitchell, John | Robbins, John | Pressley |
| Home | Morgan, John Tyler | S. F. Hobbs Home | Wilson, General |

Wash Smith Home

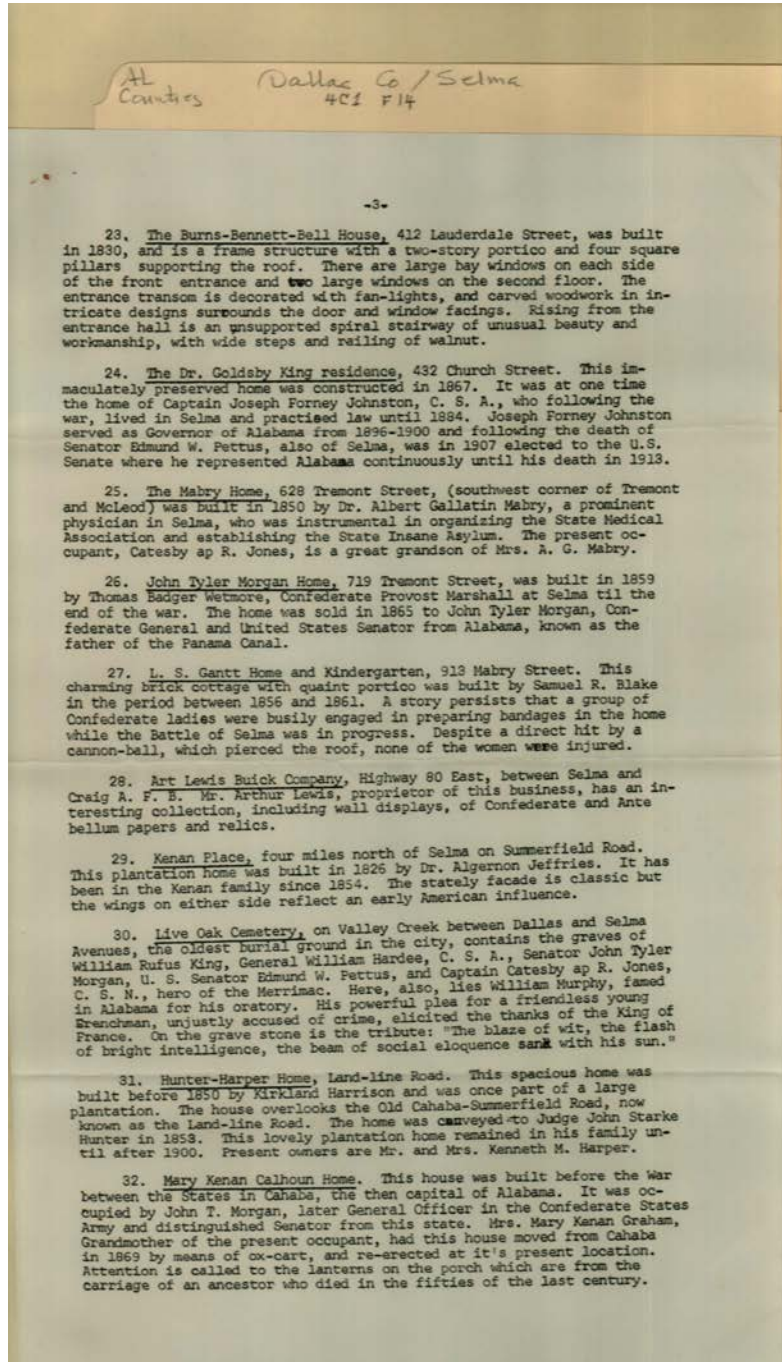
Places:

Selma, AL

Types:

leaflet

Frances Cabaniss Roberts Collection: Series 4, Subseries C, Box 1, Folder 14
 Dallas County and Cahaba Historical Commission Various Correspondence, 1960 - 1963
 Image 27 r04c01-14-000-0063 [Contents](#) [Index](#) [About](#)



Names:

Art Lewis Buick Company	Hardee, William Joseph, General	Johnston, Joseph Forney, Captain	Mabry, A. G., Mrs.
Blake, Samuel R.	Harper, Kenneth M., Mr. & Mrs.	Jones, Catesby Ap. R., Captain	Mabry, Albert Gallatin, Dr.
Burns-Bennett-Bell House	Harrison, Kirkland	Kenan Place	Mary Kenan Calhoun Home
Calhoun, Mary Kenan	Hunter, John Starke, Judge	King, Goldsby, Dr.	Morgan, John T.
Dr. Goldsby King Residence	Hunter-Harper Home	King, William Rufus	Morgan, John Tyler
Graham, Mary Kenan, Mrs.	Jeffries, Algernon, Dr.	L. S. Gantt Home & Kindergarten	Murphy, William
	John Tyler Morgan Home	Lewis, Arthur	Pettus, Edmund
		Live Oak Cemetery	Winston, Senator
		Mabry Home	Wetmore, Thomas Badger

Places:

Selma, AL

Types:

leaflet

AL
Countries

Dallas Co / Selma
4C1 F14

-4-

33. Sturdivant Hall (Watts-Parkman-Gillman Home). 713 Mabry Street, (northwest corner of McLeod and Mabry). This home was built in 1853 for Edward T. Watts under the direction of Thomas Helm Lee, Selma Architect. The house is now owned by the City of Selma and houses the Sturdivant Museum and is in the process of being furnished as an example of one of the better homes of the Ante Bellum period. The mansion is one of the finest examples of Neo-classic Greek-Revival architecture in the South.

Prepared by: Sam Earle Hobbs
and
B. M. Miller Childers

Names:

Childers, B. M.
Miller

Hobbs, Sam Earle
Lee, Thomas Helm

Sturdivant Hall
Watts, Edward T.

Watts-Parkman-
Gilman Mansion

Places:

Selma, AL

Types:

leaflet

Frances Cabaniss Roberts Collection: Series 4, Subseries C, Box 1, Folder 14
Dallas County and Cahaba Historical Commission Various Correspondence, 1960 - 1963

[Contents](#) [Index](#) [About](#)

Table of Contents

[Image 1](#) (r04c01-14-000-0034)

[Image 2](#) (r04c01-14-000-0035)

[Image 3](#) (r04c01-14-000-0036)

[Image 4](#) (r04c01-14-000-0037)

[Image 5](#) (r04c01-14-000-0038)

[Image 6](#) (r04c01-14-000-0039)

[Image 7](#) (r04c01-14-000-0040)

[Image 8](#) (r04c01-14-000-0041)

[Image 9](#) (r04c01-14-000-0042)

[Image 10](#) (r04c01-14-000-0043)

[Image 11](#) (r04c01-14-000-0044)

[Image 12](#) (r04c01-14-000-0045)

[Image 13](#) (r04c01-14-000-0046)

[Image 14](#) (r04c01-14-000-0047)

[Image 15](#) (r04c01-14-000-0048)

[Image 16](#) (r04c01-14-000-0049)

[Image 17](#) (r04c01-14-000-0050)

[Image 18](#) (r04c01-14-000-0051)

[Image 19](#) (r04c01-14-000-0052)

[Image 20](#) (r04c01-14-000-0053)

[Image 21](#) (r04c01-14-000-0054)

[Image 22](#) (r04c01-14-000-0055)

[Image 23](#) (r04c01-14-000-0056)

[Image 24](#) (r04c01-14-000-0060)

[Image 25](#) (r04c01-14-000-0061)

[Image 26](#) (r04c01-14-000-0062)

[Image 27](#) (r04c01-14-000-0063)

[Image 28](#) (r04c01-14-000-0064)

[Table of Contents](#)

[Name & Place Index](#)

[About the Collection](#)

Frances Cabaniss Roberts Collection: Series 4, Subseries C, Box 1, Folder 14
Dallas County and Cahaba Historical Commission Various Correspondence, 1960 - 1963

[Contents](#) [Index](#) [About](#)

Name & Place Index

Admiral [6](#)
Alabama Steamboat [2](#)
Alice Vivian [5, 6](#)
Ambassador [6](#)
Anthony, [7](#)
Apperson, Mary [26](#)
Arsenal Place [25](#)
Art Lewis Buick Company [27](#)
Artesian Wells [16](#)
Baker, Ellie D., Captain [4](#)
Baker, George Oscar [26](#)
Barker, Shoestring [15](#)
Barnwell, Robert Woodward, Rev. [13, 14](#)
Barry, Tom [3](#)
Benson, H. K., Captain, (Buck) [7](#)
Bibb, Joseph, Colonel [22](#)
Bibb, William Wyatt [16](#)
Bird, Samuel M., Rev. [13, 14](#)
Black Warrior Lumber Co. [7](#)
Blake, Samuel R. [27](#)
Bones, Bud [4](#)
Bragg, Braxton [7](#)
Brandish Johnson [6](#)
Bridgeport [5](#)
Burns-Bennett-Bell House [27](#)
C. W. Dorrence [5](#)
Cahaba Historical Commission [23, 24](#)
Cahaba [16](#)
Cahawba [16](#)
Calhoun, Mary Kenan [22, 27](#)
Callaway, Joseph T. [15, 23](#)
Capers, Ellison R., Rev. [14](#)
Capers, Ellison, Rev. [13](#)
Carpenter, C. C. J., Bishop [13](#)
Carrier [6](#)
Cherokee [6](#)
Childers, B. M. Miller [28](#)
City of Mobile [3](#)
Clands, Carol [20](#)
Clemens, John J., Rev. [14](#)
Cobbs, Nicholas Hamner, Bishop [13](#)
Col. Nelson Morris [7](#)
Cole, C. Mark, Captain [7](#)
Cox, J. J., Captain [5](#)
Cox-Brainard [3, 5](#)
Craig, William B. [15, 23](#)
Cremona [6](#)
Crocheron & Perine [16](#)
Crocheron Columns [16](#)
Crocheron, Henry [16](#)
Crosby, Thomas J., Rev. [14](#)
Crozzart, [15](#)
Cuba [6](#)
D'Anville, [16](#)
D. L. Tally [6](#)
Dawson, N. H. R. [13](#)
Dr. Goldsby King Residence [27](#)
Dr. S. O. Moseley Home & Gardens [26](#)
E. Douglass [7](#)
Edmund Winston Pettus House [25](#)
Elias Parkman Home [26](#)
Elixa Battle [6](#)
Ella Madson [7](#)
Ellis, Furniss [15, 23](#)
Empress [6](#)
Era No. 9 [6](#)
Farrar, [7](#)
Fashion Farmer [6](#)
Fellows, W. H. [26](#)
Fellows-Hooker Home [26](#)
Ferguson, Hugh [25](#)
Fergusson, Thomas K. [13](#)
First Capitol of Alabama [16](#)
Fischer, A. Von [25](#)
Forrest, Nathan Bedford, General [16](#)
Foster, Fleetwood, Judge [3, 5](#)
Frank Gaines House [26](#)
Frank S. Stone [4](#)
Freeman, Lewis R. [8](#)
Fry, Anna Gayle [15](#)
Gaines, Frank [26](#)
Gamble, Edward Watts, Rev. [14](#)
Gayle, T. G. [15, 23](#)
George O. Baker Home [26](#)
Goolmar, Jerry [20](#)
Graham, Mary Kenan, Mrs. [27](#)
Graham, Mary Kenan [22](#)
Gray, Simon Peter, Captain [4, 13](#)
Green [8](#)
Hallam, Frank, Rev. [14](#)
Hammond, Ralph [26](#)
Hardee, William Joseph, General [26, 27](#)
Hardy, [26](#)
Harper, Kenneth M., Mr. & Mrs. [27](#)
Harrison, Kirkland [27](#)
Hattie B. Moore [6](#)
Havighurst, [7](#)
Helen Burke [7](#)
Historical River Research [3, 8](#)
Hobbs, S. F. [26](#)
Hobbs, Sam Earle [28](#)
Hobbs, Samuel F. [26](#)
Horn, Joseph R., Rev. [14](#)
Hotel Albert [25](#)

Houston, Sam [22](#)
Hugh Ferguson House [25](#)
Hunter, John Starke, Judge [27](#)
Hunter-Harper Home [27](#)
Iatan [4](#)
Intercom [19](#)
J. B. Parke Home & Gardens [26](#)
J. S. Lamar Home [25](#)
Jackson, Henry M., Rev. [13](#)
Jackson, Madison T., Captain [4](#)
James Dellett [5](#)
James, B. F., Master [6](#)
Jeffries, Algernon, Dr. [27](#)
Jenkins, John J., Rev. [14](#)
Joab Lawrence [4](#)
John Tyler Morgan Home [27](#)
Johnson, A. H., Master [6](#)
Johnson, William [25](#)
Johnston, Joseph Forney, Captain [27](#)
Jones, Catesby Ap. R., Captain [22](#), [27](#)
Kate Adams [6](#)
Kenan Place [27](#)
King Louis XV [15](#)
King, Goldsby, Dr. [27](#)
King, William B. [26](#)
King, William Rufus [15](#), [27](#)
Kirk, George, Master [6](#)
Kirkpatrick, S. M. [15](#)
Kirkpatrick, Sam M., Dr. [15](#)
L. S. Gantt Home & Kindergarten [27](#)
L. W. Crane & Group [6](#)
La Belle Reviere [6](#)
Lady Grace [6](#)
LaFayette's Landing [16](#)
LaFayette, [15](#), [16](#)
Lallah Rookh [4](#)
Lamar, J. S. [25](#)
Last Chance [6](#)
Lecompte [5](#)
Lee, R. E., General [18](#)
Lee, Thomas Helm [18](#), [26](#), [28](#)
LeGrande [4](#)
Lewis S. Riggs Home [25](#)
Lewis, Arthur [27](#)
Lexington, KY [10](#)
Lilly [4](#), [6](#)
Linebaugh, John H. Rev. [14](#)
Little Rock [5](#)
Little Rufus [6](#)
Live Oak Cemetery [27](#)
Lotus No. 2 [4](#)
Loving Kate [6](#)
Lucy Bell [5](#)
Lydia Vansant [6](#)
Mabry Home [27](#)
Mabry, A. G., Dr. [22](#)
Mabry, A. G., Mrs. [27](#)
Mabry, Albert Gallatin, Dr. [27](#)
Mabry, John, Captain [7](#)
Magnolia [6](#)
Martha J. Hennan [7](#)
Mary Elizabeth [6](#)
Mary Joe [3](#)
Mary Kenan Calhoun Home [27](#)
Mary M [6](#)
Mary Speed [3](#)
Mary [6](#), [7](#)
Mathews, T. Frank, Rev. [12](#), [14](#)
Maury, Matthew F., Rev. [14](#)
May, J. T., Captain [5](#)
McDowell, William G., Bishop [13](#)
McWilliams, Richard E. [7](#)
Messenger [5](#), [6](#)
Meyer, Moritz [25](#)
Miles, M. L. [15](#), [23](#)
Miller Towing Co. [7](#)
Miller, Harry E., Jr., Captain [7](#)
Miller, Harry E., Sr., Captain [7](#)
Miller, Miram C. [20](#)
Mitchell, John [26](#)
Mobile Cotton Factors [4](#)
Morgan, John T. [22](#), [27](#)
Morgan, John Tyler [26](#), [27](#)
Moseley, S. O., Dr. [26](#)
Moseley, S. O., Sr., Mrs. [26](#)
Murphy, William [27](#)
Murray, John G. [13](#)
Naval Foundry Monument [25](#)
Nelson, R. M. [13](#)
Neville, Bert [2](#), [3](#), [8](#), [9](#)
Newman, Susan T. [20](#)
Norris, William J. [25](#)
Old Cahaba First Capital [15](#)
Old Cahaba [15](#)
Orlene St. John [5](#)
Otis, Bob, Captain [4](#)
Otis, Robert, Captain [5](#)
Our Lady of Assumption Church [25](#)
Packet Mary [3](#)
Parke, Clifford Daniel, Dr. [26](#)
Parke, J. B. [26](#)
Parkman, Elias [26](#)
Peacock, George [13](#)
Pennington, Veronica, MD [8](#)
Perine, E. M. [16](#)
Peters, Thomas, Jr. [13](#)
Pettus, Edmund Winston, General [25](#)
Pettus, Edmund Winston, Senator [27](#)
Phillips, George, Dr. [26](#)
Phillips, William S. [26](#)
Philpot, Robert [25](#)
Pickley Brothers [7](#)
Pierce, Franklin, President [15](#)
Platt, William H., Rev. [14](#)
Polk, Leonidas, Rev. [13](#)
Price, Purser [5](#)
Quarles, George P. [22](#)
Quarles, Lt. Colonel [26](#)

Rice Brothers [7](#)
Ricks, H. C., Mrs. [12](#)
Riggs, Lewis S. [25](#)
Robbins, John [26](#)
Robert Philpot House [25](#)
Roberts, Frances, Dr. [9](#), [23](#)
Roberts, Frances [10](#)
Rosborough, Anna, Mrs. [23](#)
S. F. Hobbs Home [26](#)
Selma & Dallas County Chamber [15](#)
Selma Historic Homes tour [22](#)
Selma Historic Homes [21](#)
Selma Homes, Buildings & Historic Sites [25](#)
Selma Professional Arts Building [25](#)
Selma, AL [2](#), [3](#), [8](#), [9](#), [12](#), [15](#), [17](#), [22](#), [23](#), [24](#), [25](#), [26](#), [27](#),
[28](#)
Senator [5](#)
Singer, Jeanne G. [20](#)
Smith, Susan P. [26](#)
Smith, W. M. [26](#)
Smith, Washington McMurray, Colonel [22](#)
Smith, Washington McMurray [26](#)
Snediker, John K. [13](#)
Southern Sand and Gravel Co. [7](#)
Speith, Joe [3](#)
St. Charles [6](#)
St. James Hotel Building [25](#)
St. Nicholas [5](#)
St. Paul's Episcopal Church History [13](#)
St. Paul's Episcopal Church [12](#)
St. Paul's Epistle [12](#)
St. Paul's Protestant Episcopal Church [25](#)
Steamboat Nettie Quill [1](#)
Steamboatana [3](#), [8](#)
Stone, J. Woodie, Captain [4](#)
Stone, John, Captain [4](#)
Sturdivant Hall [17](#), [18](#), [22](#), [28](#)
Sullivan, Henry, Captain [5](#)
Swift, John [26](#)
Swift, Louisa [26](#)
Temple Hishkan Israel Synagogue [13](#)
Thomas Helm Lee Home [26](#)
Ticknor, James H., Rev. [14](#)
Tombigbee [7](#)
Travis, Amos, Captain [3](#)
Turner, Jean [20](#)
Upjohn, R. M. [13](#)
Upjohn, R. [13](#)
Upper Mississippi [6](#)
Vaughan Memorial Hospital [25](#)
W. J. Bethea [4](#)
Wall, Bennett H. [10](#)
Wash Smith Home [26](#)
Watts, Edward T. [28](#)
Watts, Edward, Colonel [18](#)
Watts-Parkman-Gilman Mansion [18](#), [28](#)
Weaver, William [13](#)
Welch Home [26](#)
Welch, William Pressley [26](#)
Weld, Bernard F. [20](#)
Wetmore, Thomas Badger [27](#)
Wheatley, A. G., Captain [7](#)
Wilcox Banner [3](#), [5](#)
William Jones, Jr. [6](#)
Wilson, General [13](#), [26](#)
Wilson, James H., General [16](#)
Wright, Lucien B., Rev. [13](#), [14](#)
Yeader, V. Frederick [20](#)

Frances Cabaniss Roberts Collection

Preferred Citation: Frances Cabaniss Roberts Collection, Archives and Special Collections, M. Louis Salmon Library, University of Alabama in Huntsville, Huntsville, AL.

Collection Scope and Content: The Collection of 114 Linear ft. includes a total of 156 Archival Boxes. The Frances Cabaniss Roberts collection covers the historical records of the Cabaniss Roberts family. This collection contains extensive correspondence records of the Cabaniss Roberts family circa 1830 to 1930.

Archives/Special Collections Access Restrictions: None

Conditions Governing Use: This material may be protected under U. S. Copyright Law (Title 17, U.S. Code) which governs the making of photocopies or reproductions of copyrighted materials. You may use the digitized material for private study, scholarship, or research. Though the University of Alabama in Huntsville Archives and Special Collections has physical ownership of the material in its collections, in some cases we may not own the copyright to the material. It is the patron's obligation to determine and satisfy copyright restrictions when publishing or otherwise distributing materials found in our collections.

Provenance: Gift of Johanna Shields on October 28, 2006.



THE UNIVERSITY OF
ALABAMA IN HUNTSVILLE

**The UAH Archives and Special Collections
M. Louis Salmon Library**