

**Names:**

Alabama Historical  
Convention

Farmer, Margaret P.,  
Mrs.

Extract from Old  
Ledger

**Places:**

Huntsville, AL

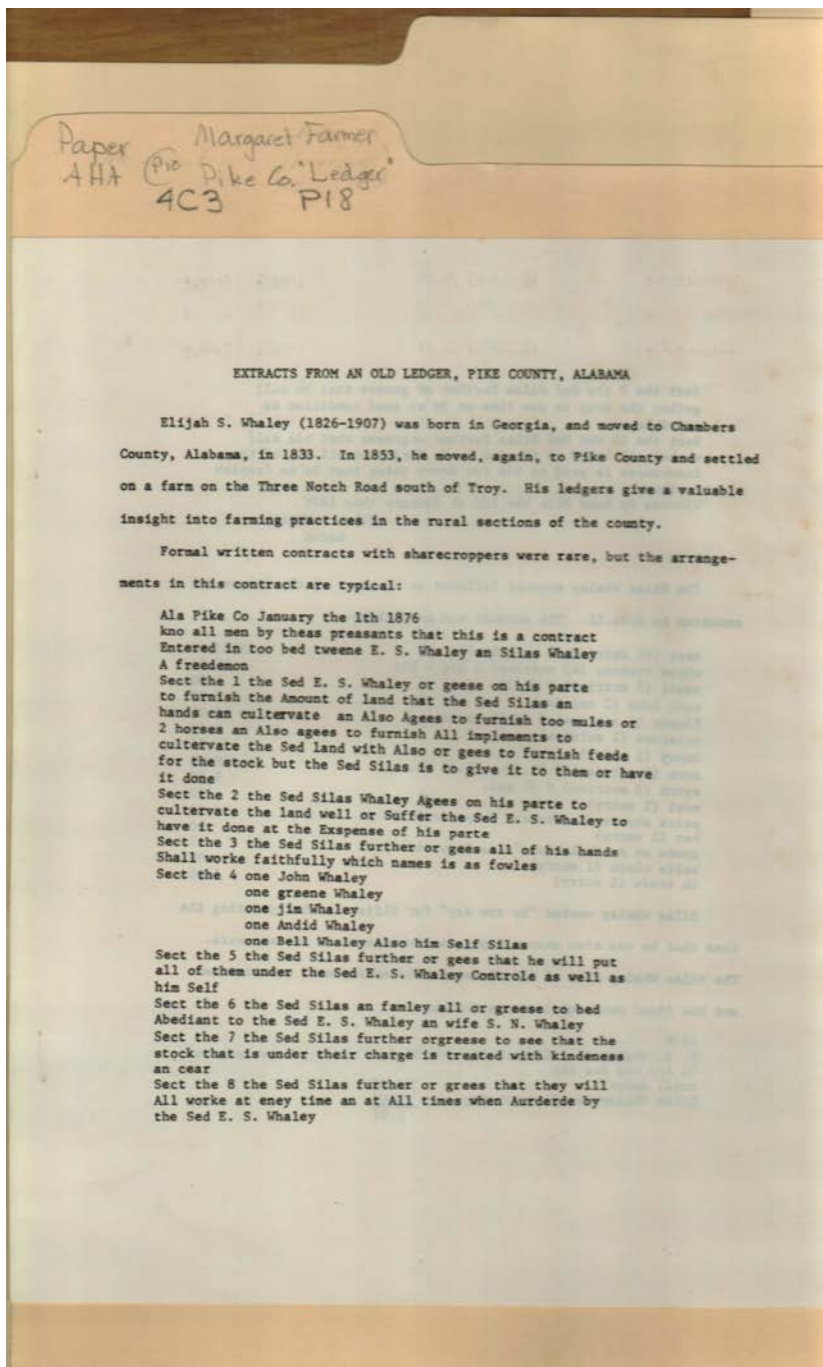
Pike County, AL

**Types:**

essay

**Dates:**

May 1969



**Names:**

Whaley, Bell  
Whaley, Elijah S.  
Whaley, Greene

Whaley, Jim  
Whaley, John  
Whaley, S. N.

Whaley, Silas  
Extract from Old  
Ledger

**Places:**

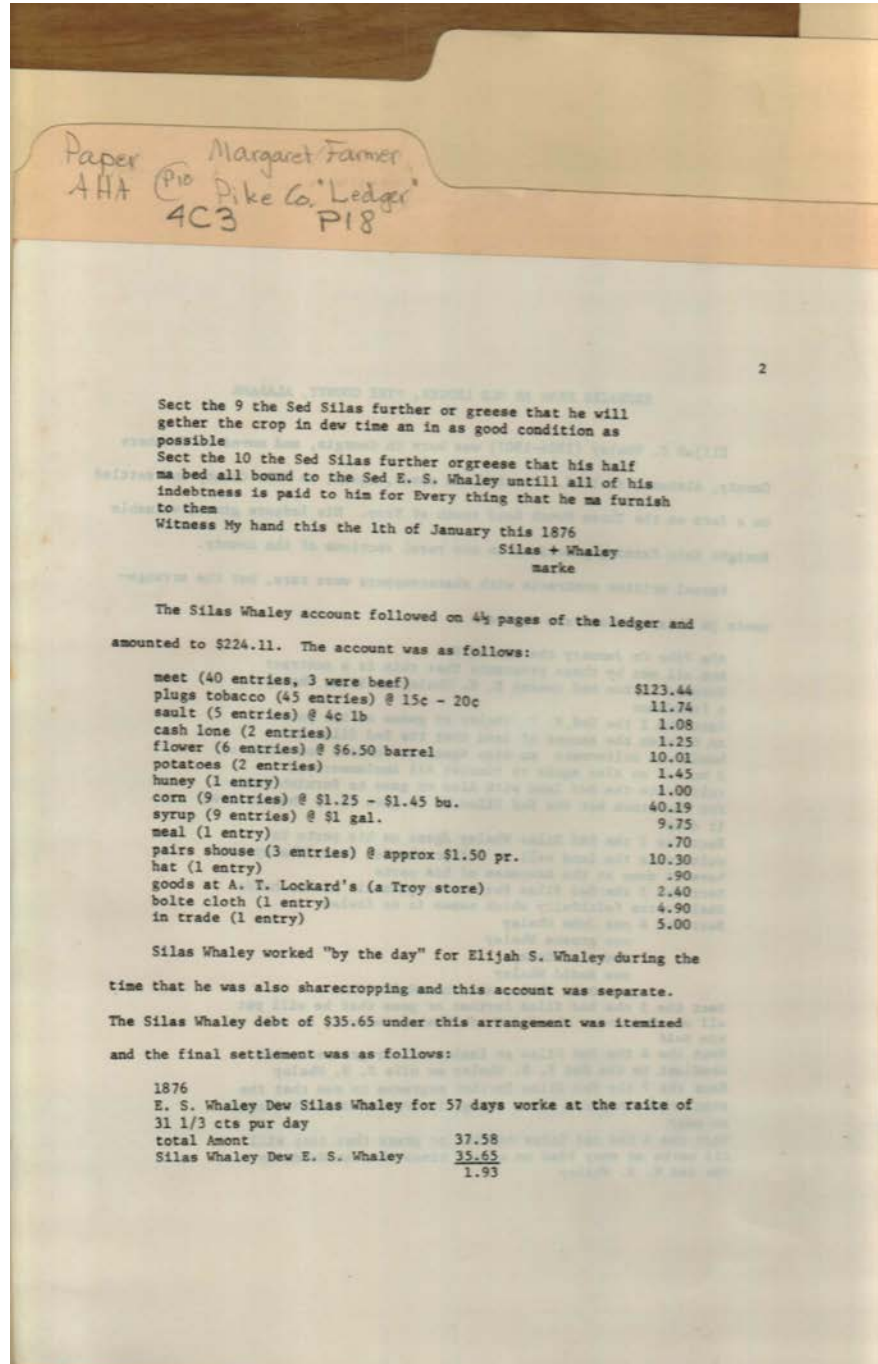
Pike County, AL

**Types:**

agreement

**Dates:**

Jan 01, 1976



**Names:**

Lockkard, A. T.

Whaley, E. S.

Whaley, Elijah S.

Whaley, Silas

**Places:**

Pike County, AL

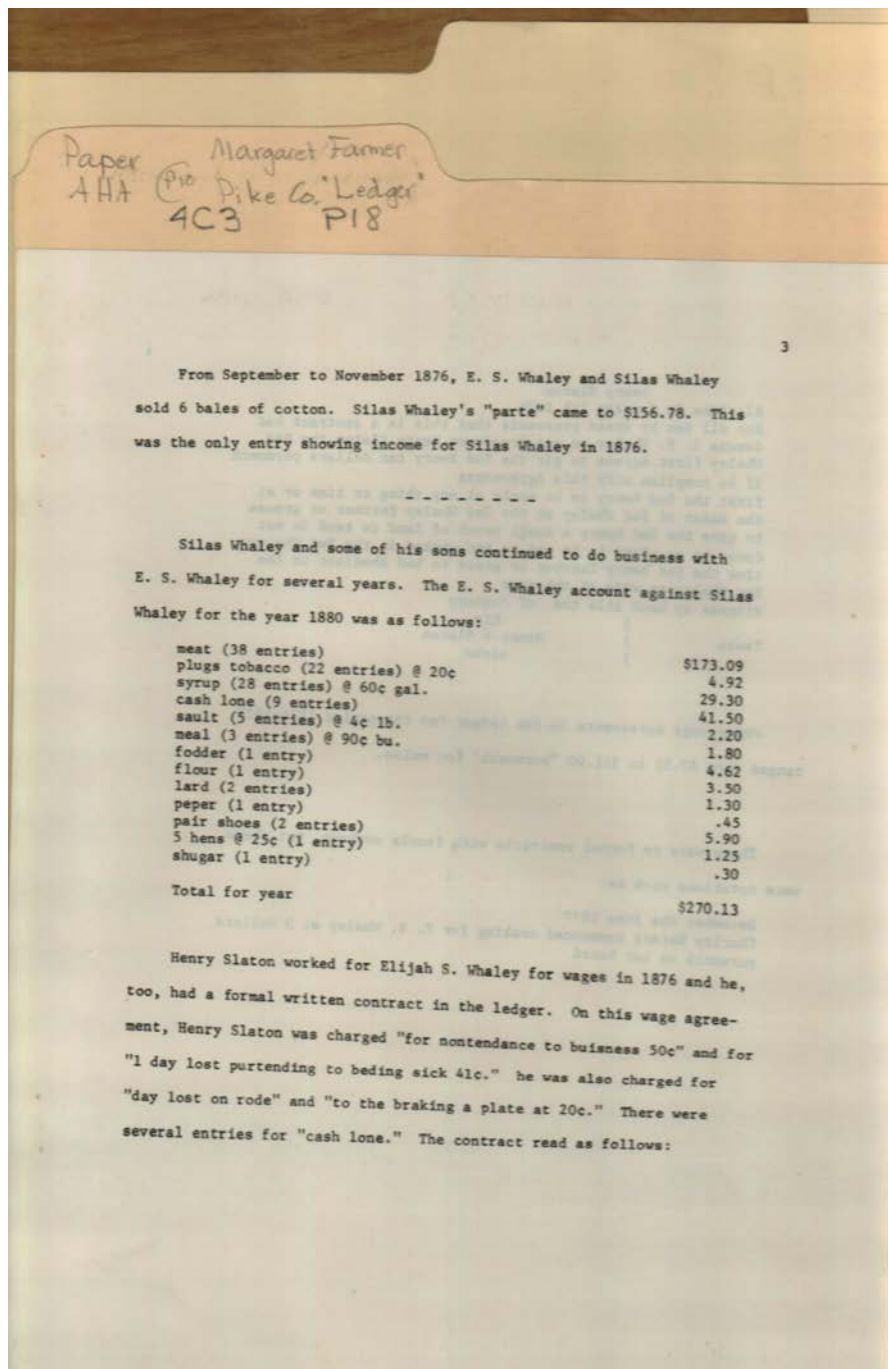
**Types:**

account

agreement

**Dates:**

Jan 01, 1976



**Names:**

Slaton, Henry

Whaley, E. S.

Whaley, Elijah S.

Whaley, Silas

**Types:**

account

agreement

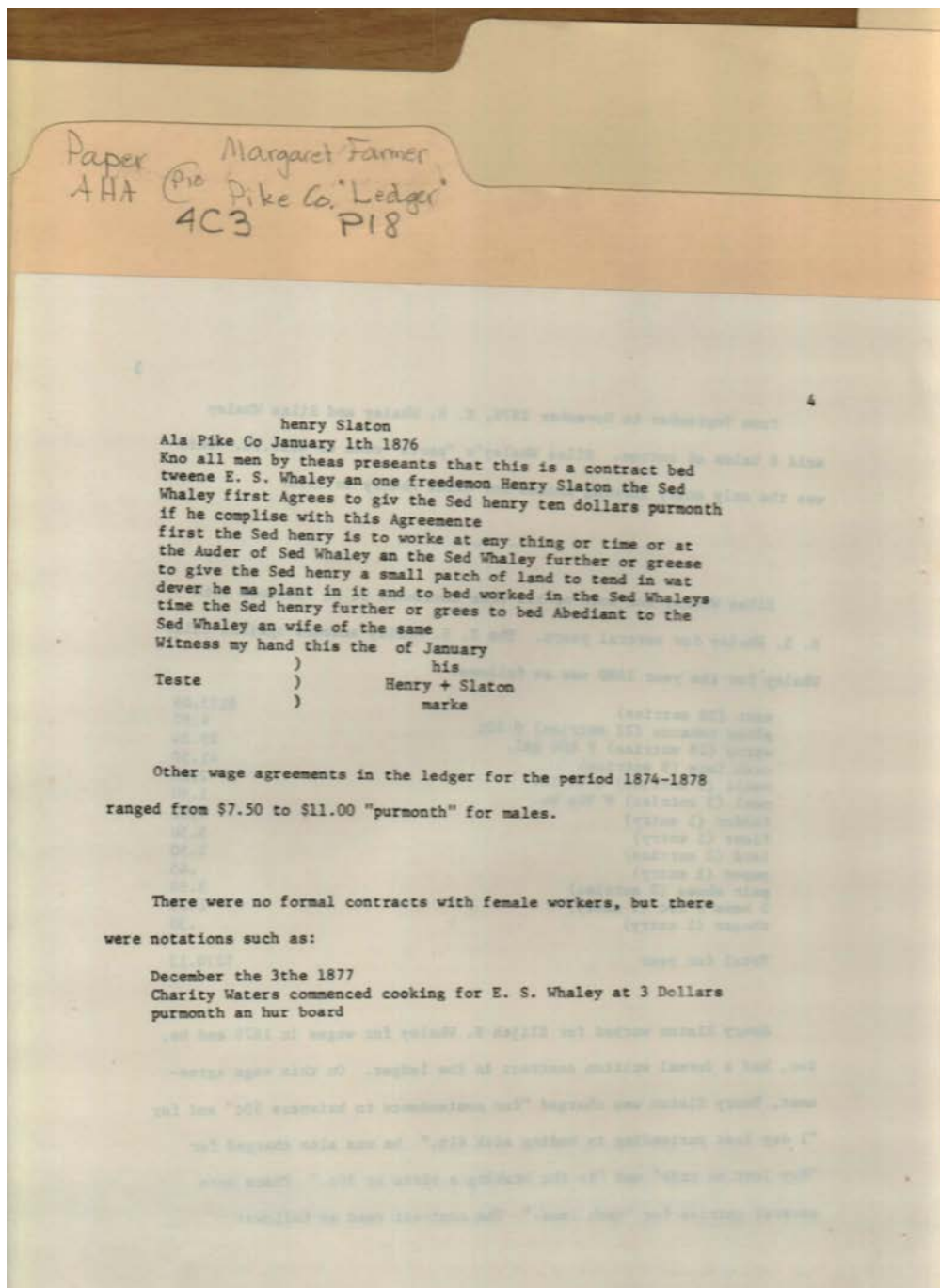
essay

**Dates:**

1876

1880

Sep 1876



**Names:**

Slaton, Henry

Waters, Charity

Whaley, E. S.

**Places:**

Pike County, AL

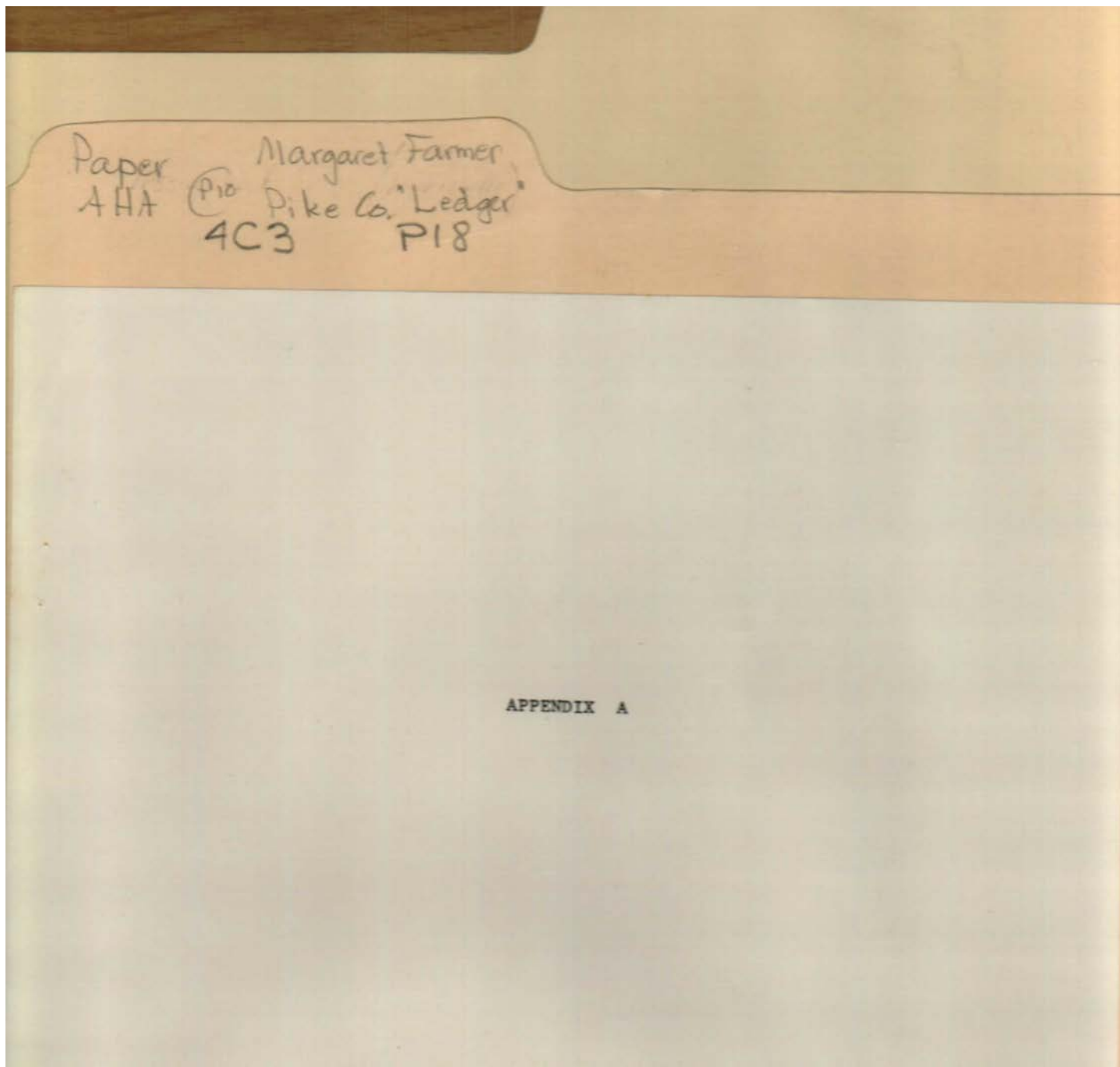
**Types:**

agreement

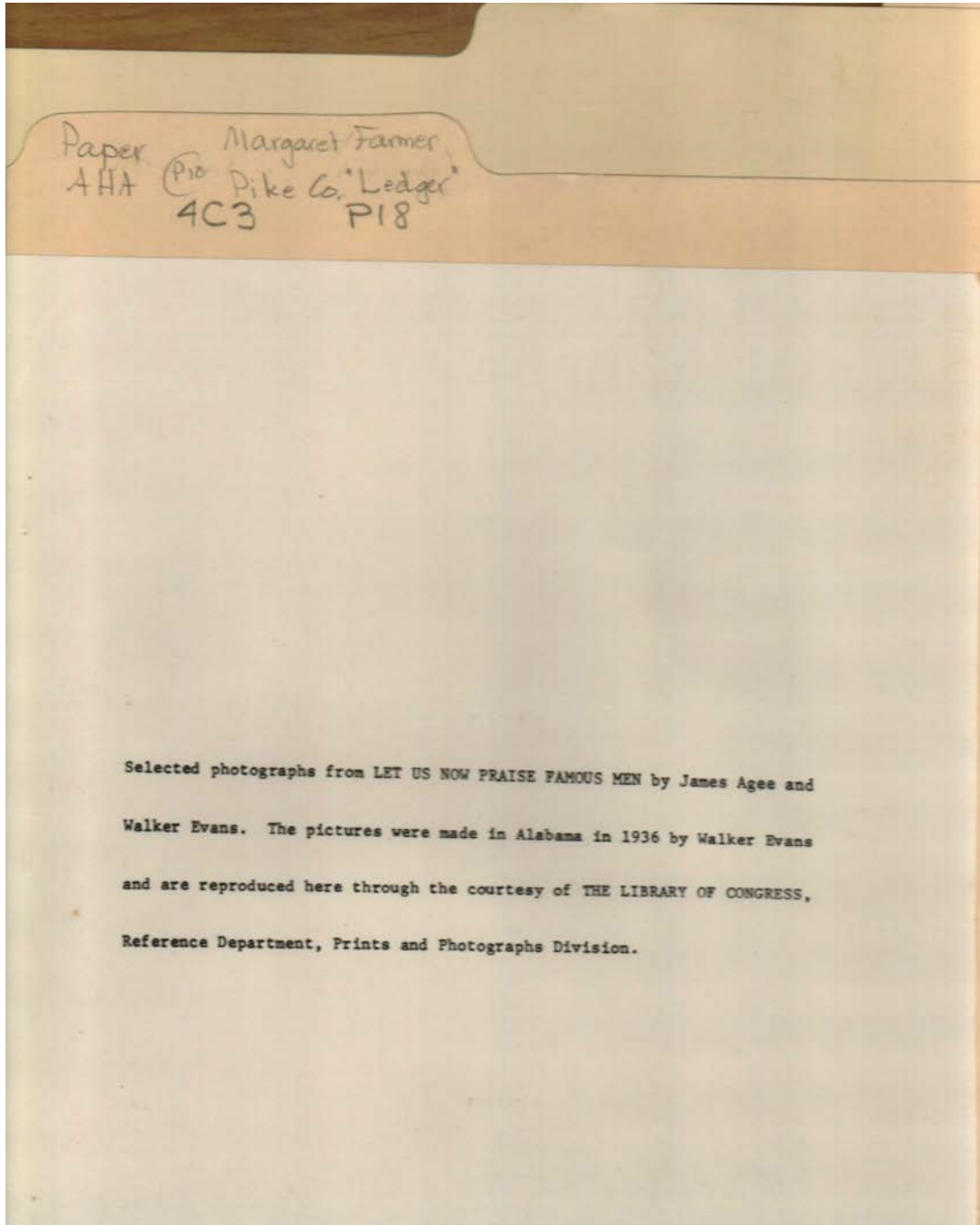
**Dates:**

Dec 03, 1877

Jan 01, 1876



**Types:**  
essay



**Names:**

Agee, James

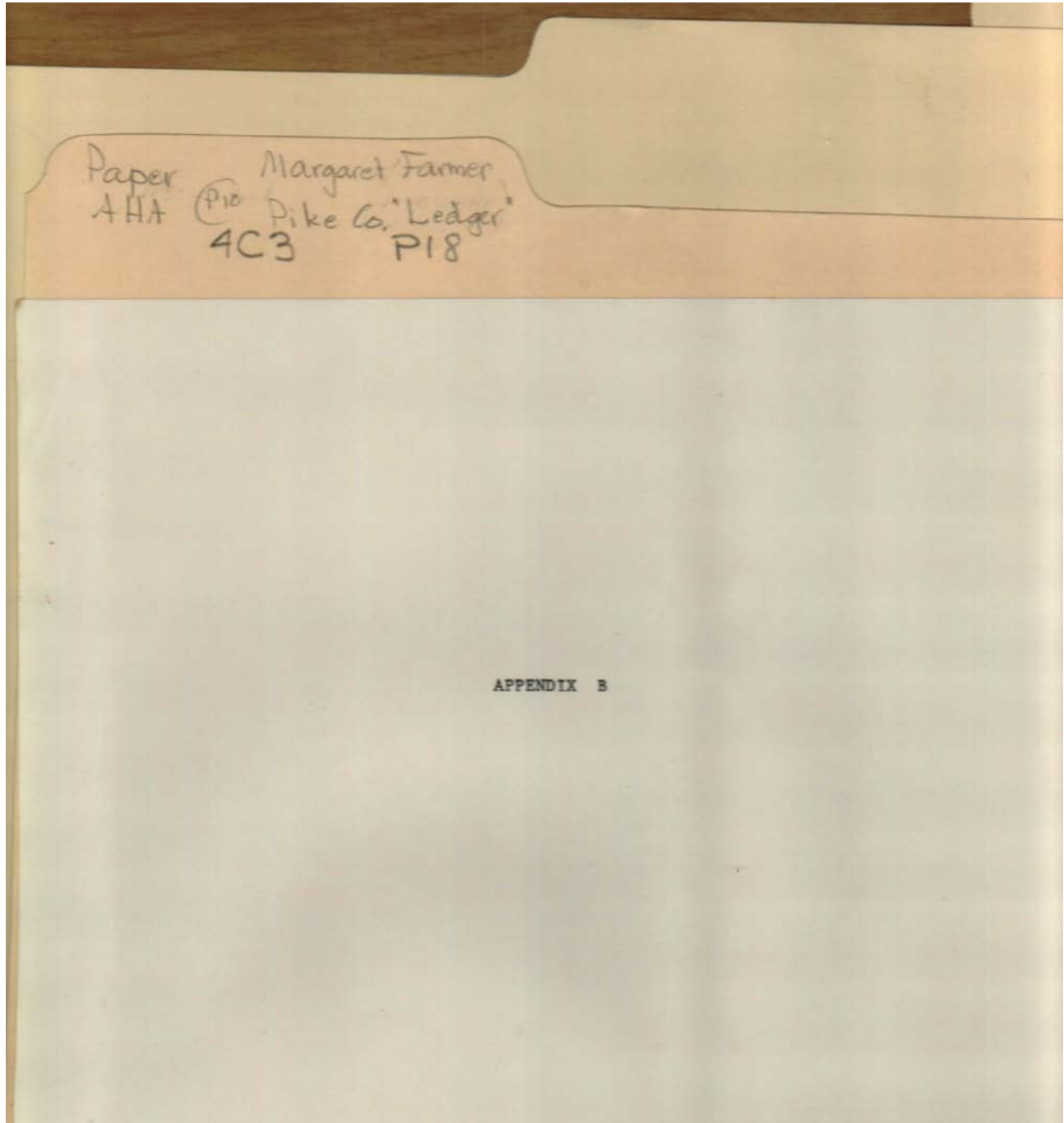
Evans, Walker

**Types:**

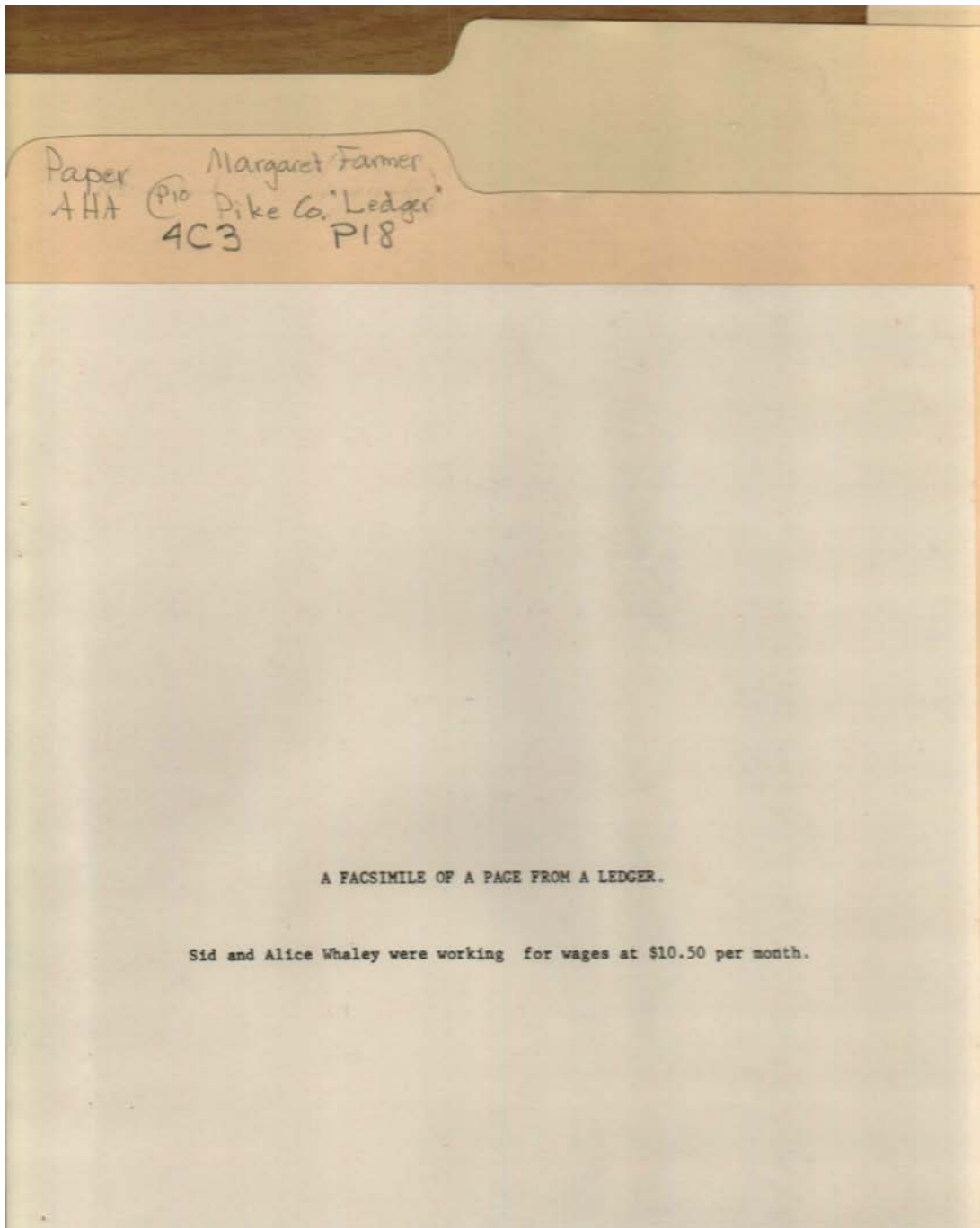
essay







**Types:**  
essay



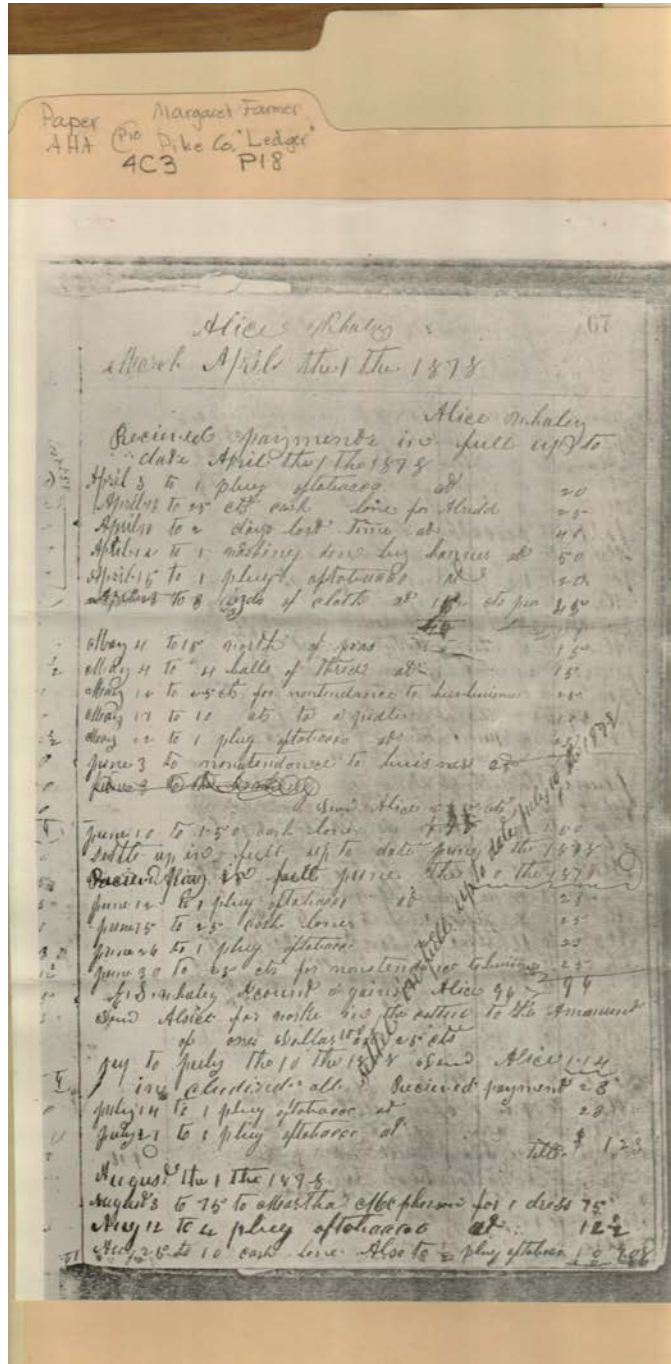
**Names:**

Whaley, Alice

Whaley, Sid

**Types:**

essay



**Names:**  
 McPherson, Martha

Whaley, Alice

Whaley, E. S.

**Types:**  
 account

**Dates:**  
 Mar-Apr 1878

Paper  
AHA (P10) Margaret Farmer  
4C3 Pike Co. Ledger  
P18

RISE AND FALL OF SHARECROPPING PIKE COUNTY, ALABAMA

YEAR	COUNTY POPULATION	ACRES COTTON PLANTED	HORSES & MULES ON FARMS	PROPORTION TENANT FARMERS
1900	29,172	81,916	5253	64.1%
1910	30,815	96,540	5630	71.5%
1920	31,631	36,480*	6623	72.5%
1930	32,240	73,836	5440	75.2%
1940	32,493	39,878	5444	71.4%
1950	30,608	23,241	4909	63.6%
1960	25,987	10,522	124	41.8%
1964	-----	8,210	29	29.8%

\* Boll weevil struck Pike County in 1918

Population figures from ALABAMA OFFICIAL & STATISTICAL REGISTER.  
All other figures from Dr. J. H. Yeager, Head of Department,  
School of Agriculture, Auburn University.

**Names:**

Sharecropping Data

Yeager, J. H., Dr.

**Places:**

Pike County, AL

**Types:**

essay

**Dates:**

1900-1964

**Frances Cabaniss Roberts Collection: Series 4, Subseries C, Box 3, Folder 10**  
**Pike County, Alabama Ledger Extracts, prepared by Farmer, Margaret, 1969 - Alabama Counties**  
[Contents](#) [Index](#) [About](#)

## Table of Contents

[Image 1](#) (r04c03-10-000-0188)

[Image 2](#) (r04c03-10-000-0189)

[Image 3](#) (r04c03-10-000-0190)

[Image 4](#) (r04c03-10-000-0191)

[Image 5](#) (r04c03-10-000-0192)

[Image 6](#) (r04c03-10-000-0193)

[Image 7](#) (r04c03-10-000-0194)

[Image 8](#) (r04c03-10-000-0195)

[Image 9](#) (r04c03-10-000-0196)

[Image 10](#) (r04c03-10-000-0197)

[Image 11](#) (r04c03-10-000-0198)

[Image 12](#) (r04c03-10-000-0199)

[Table of Contents](#)  
[Name & Place Index](#)  
[About the Collection](#)

**Frances Cabaniss Roberts Collection: Series 4, Subseries C, Box 3, Folder 10**  
**Pike County, Alabama Ledger Extracts, prepared by Farmer, Margaret, 1969 - Alabama Counties**  
[Contents](#) [Index](#) [About](#)

## **Name & Place Index**

Agee, James <a href="#">7</a>	Waters, Charity <a href="#">5</a>
Alabama Historical Convention <a href="#">1</a>	Whaley, Alice <a href="#">10</a> , <a href="#">11</a>
Alabama <a href="#">8</a>	Whaley, Bell <a href="#">2</a>
Evans, Walker <a href="#">7</a>	Whaley, E. S. <a href="#">3</a> , <a href="#">4</a> , <a href="#">5</a> , <a href="#">11</a>
Extract from Old Ledger <a href="#">1</a> , <a href="#">2</a>	Whaley, Elijah S. <a href="#">2</a> , <a href="#">3</a> , <a href="#">4</a>
Farmer, Margaret P., Mrs. <a href="#">1</a>	Whaley, Greene <a href="#">2</a>
Huntsville, AL <a href="#">1</a>	Whaley, Jim <a href="#">2</a>
Lockkard, A. T. <a href="#">3</a>	Whaley, John <a href="#">2</a>
McPherson, Martha <a href="#">11</a>	Whaley, S. N. <a href="#">2</a>
Pike County, AL <a href="#">1</a> , <a href="#">2</a> , <a href="#">3</a> , <a href="#">5</a> , <a href="#">12</a>	Whaley, Sid <a href="#">10</a>
Sharecropping Data <a href="#">12</a>	Whaley, Silas <a href="#">2</a> , <a href="#">3</a> , <a href="#">4</a>
Slaton, Henry <a href="#">4</a> , <a href="#">5</a>	Yeager, J. H., Dr. <a href="#">12</a>

# Frances Cabaniss Roberts Collection

**Preferred Citation:** Frances Cabaniss Roberts Collection, Archives and Special Collections, M. Louis Salmon Library, University of Alabama in Huntsville, Huntsville, AL.

**Collection Scope and Content:** The Collection of 114 Linear ft. includes a total of 156 Archival Boxes. The Frances Cabaniss Roberts collection covers the historical records of the Cabaniss Roberts family. This collection contains extensive correspondence records of the Cabaniss Roberts family circa 1830 to 1930.

**Archives/Special Collections Access Restrictions:** None

**Conditions Governing Use:** This material may be protected under U. S. Copyright Law (Title 17, U.S. Code) which governs the making of photocopies or reproductions of copyrighted materials. You may use the digitized material for private study, scholarship, or research. Though the University of Alabama in Huntsville Archives and Special Collections has physical ownership of the material in its collections, in some cases we may not own the copyright to the material. It is the patron's obligation to determine and satisfy copyright restrictions when publishing or otherwise distributing materials found in our collections.

**Provenance:** Gift of Johanna Shields on October 28, 2006.



THE UNIVERSITY OF  
ALABAMA IN HUNTSVILLE

**The UAH Archives and Special Collections  
M. Louis Salmon Library**