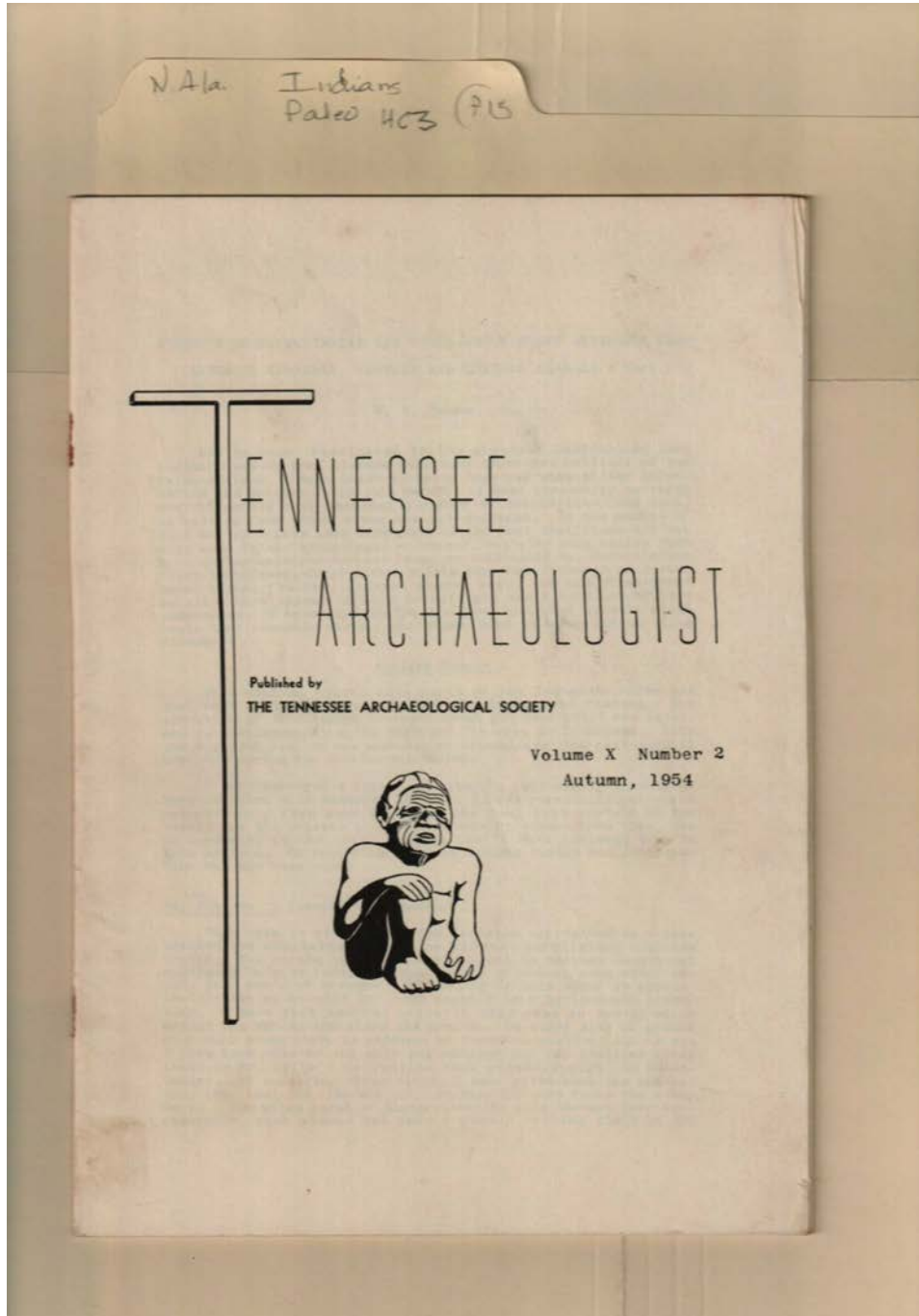


Frances Cabaniss Roberts Collection: Series 4, Subseries C, Box 3, Folder 15
North Alabama Paleo Indians Article in "Tennessee Archaeologist," by Mahan, E.C., 1954 - Miscellaneous
Alabama

Image 1 r04c03-15-000-0259 [Contents](#) [Index](#) [About](#)



Names:

Tennessee
Archaeological

Society

Tennessee
Archaeologist

Types:

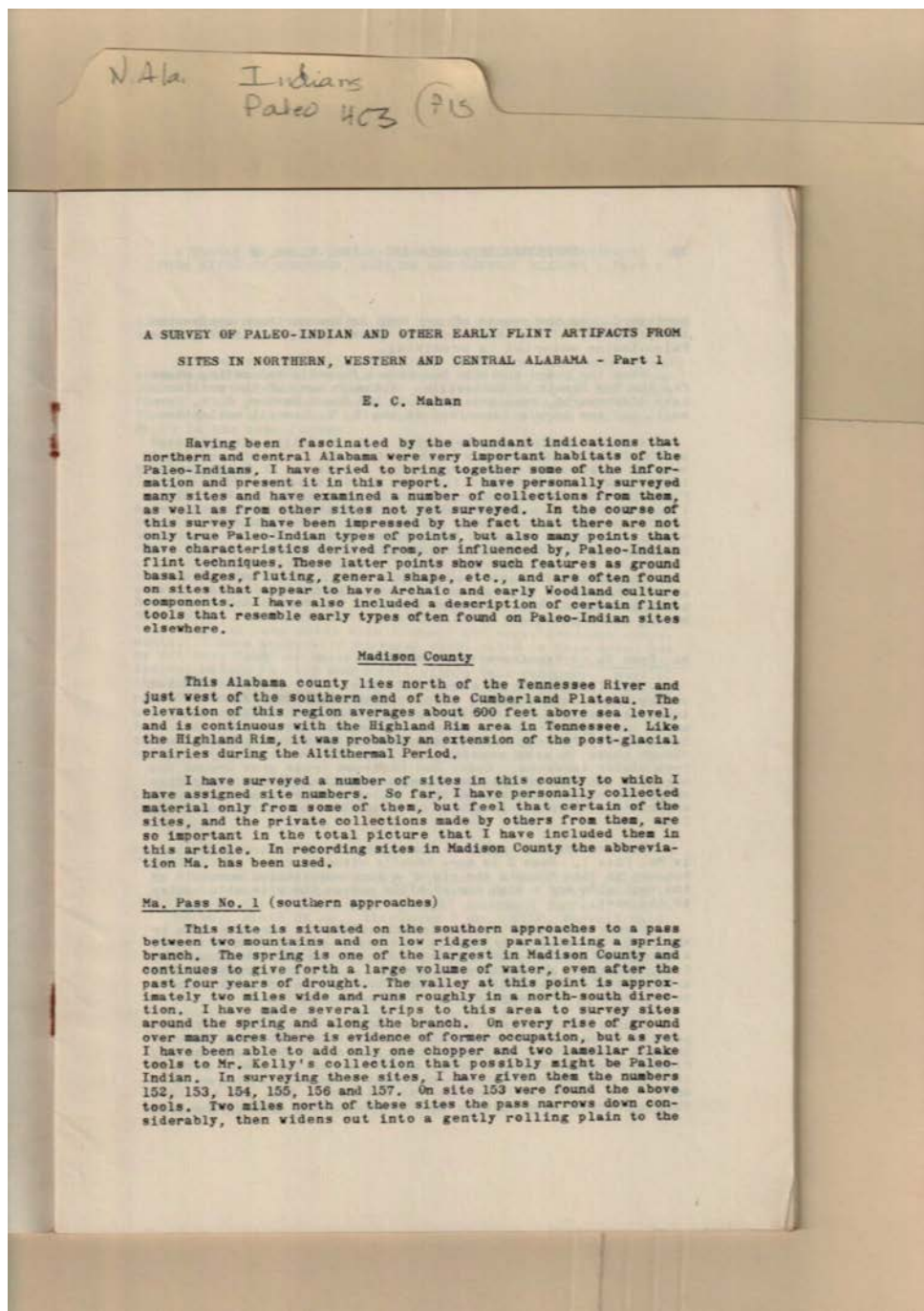
newsletter

Dates:

Autumn 1954

Frances Cabaniss Roberts Collection: Series 4, Subseries C, Box 3, Folder 15
North Alabama Paleo Indians Article in "Tennessee Archaeologist," by Mahan, E.C., 1954 - Miscellaneous
Alabama

Image 2 r04c03-15-000-0260 [Contents](#) [Index](#) [About](#)



Names:

Early Flint Artifacts
from Alabama Sites

Kelly,
Madison County Sites

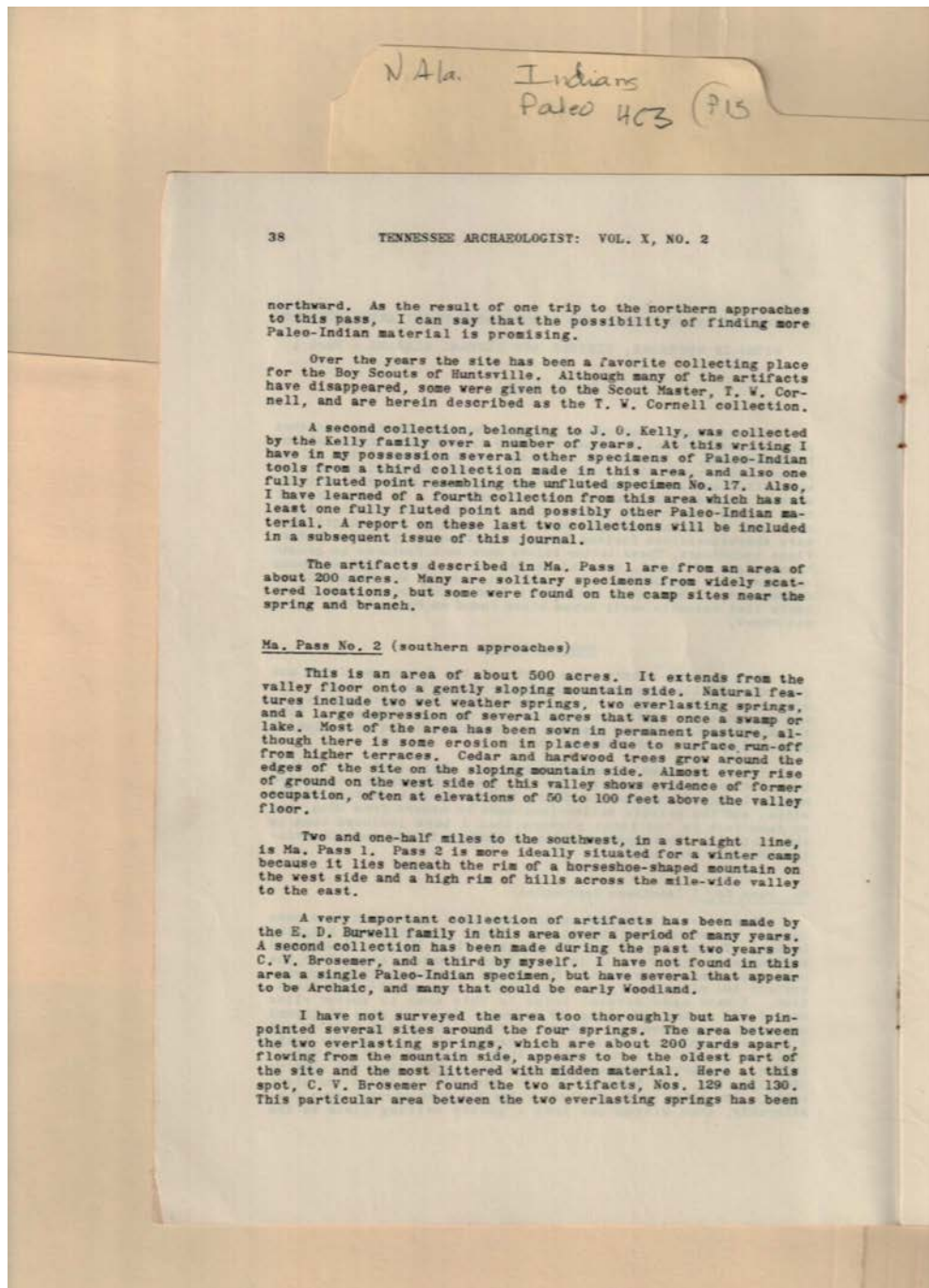
Mahan, E. C.

Types:

newsletter

Frances Cabaniss Roberts Collection: Series 4, Subseries C, Box 3, Folder 15
North Alabama Paleo Indians Article in "Tennessee Archaeologist," by Mahan, E.C., 1954 - Miscellaneous
Alabama

Image 3 r04c03-15-000-0261 [Contents](#) [Index](#) [About](#)



Names:

Brosemer, C. V.
Burwell, E. D.

Cornell, Tom W.
(Scoutmaster)

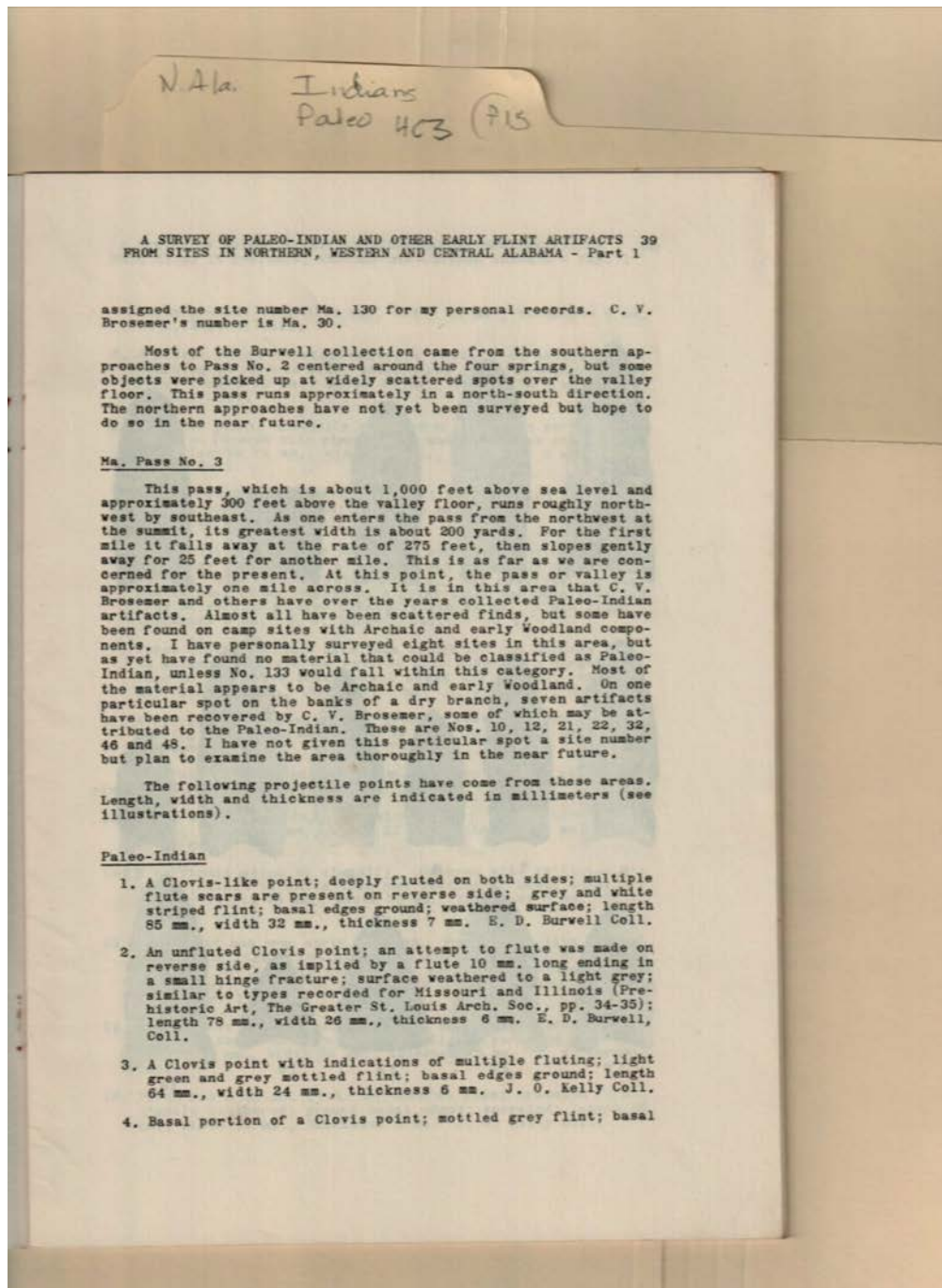
Kelly, J. O.

Types:

newsletter

Frances Cabaniss Roberts Collection: Series 4, Subseries C, Box 3, Folder 15
North Alabama Paleo Indians Article in "Tennessee Archaeologist," by Mahan, E.C., 1954 - Miscellaneous
Alabama

Image 4 r04c03-15-000-0262 [Contents](#) [Index](#) [About](#)



Names:

Brosemer, C. V.

Burwell, E. D.

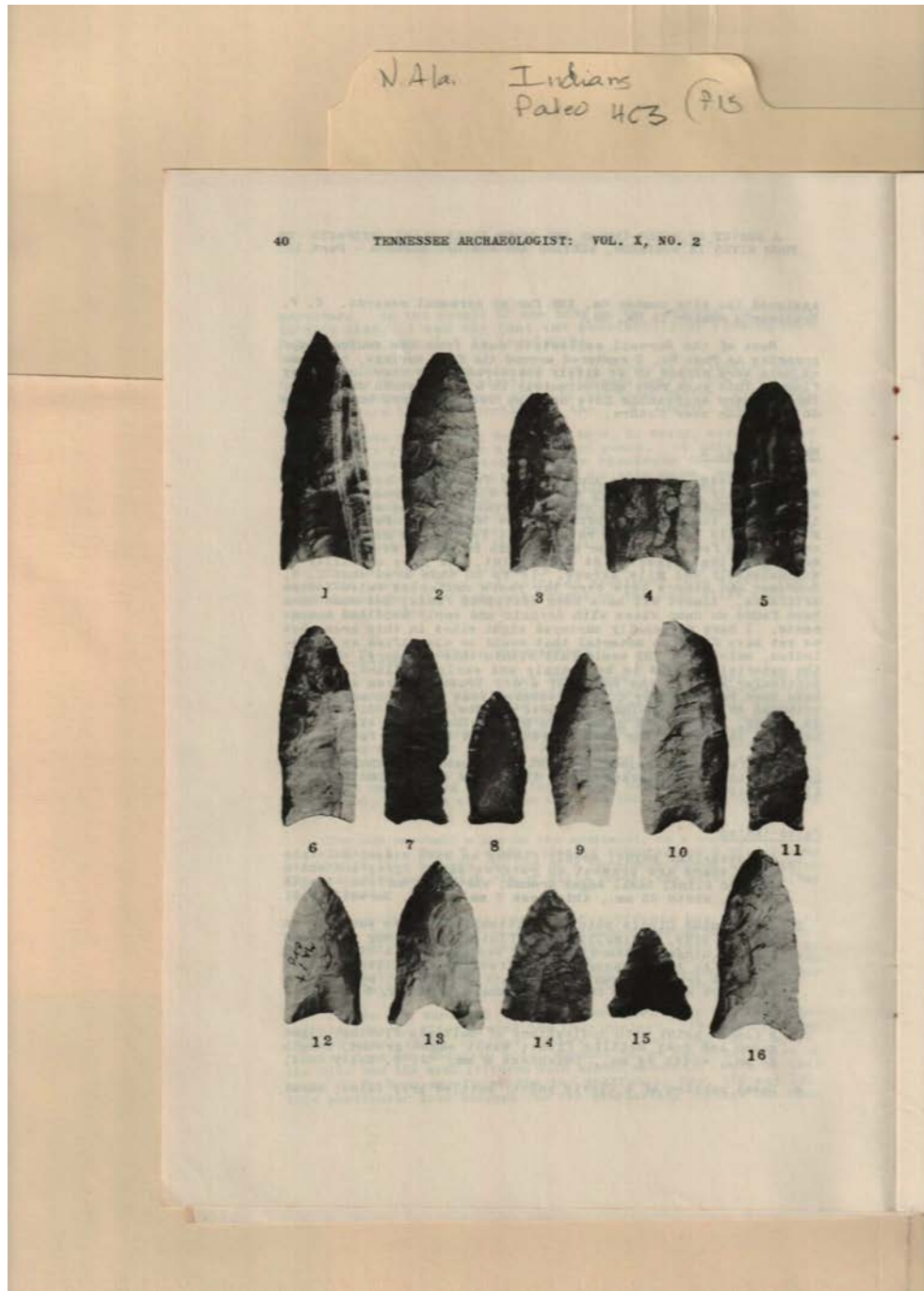
Kelly, J. O.

Types:

newsletter

Frances Cabaniss Roberts Collection: Series 4, Subseries C, Box 3, Folder 15
North Alabama Paleo Indians Article in "Tennessee Archaeologist," by Mahan, E.C., 1954 - Miscellaneous
Alabama

Image 5 r04c03-15-000-0263 [Contents](#) [Index](#) [About](#)

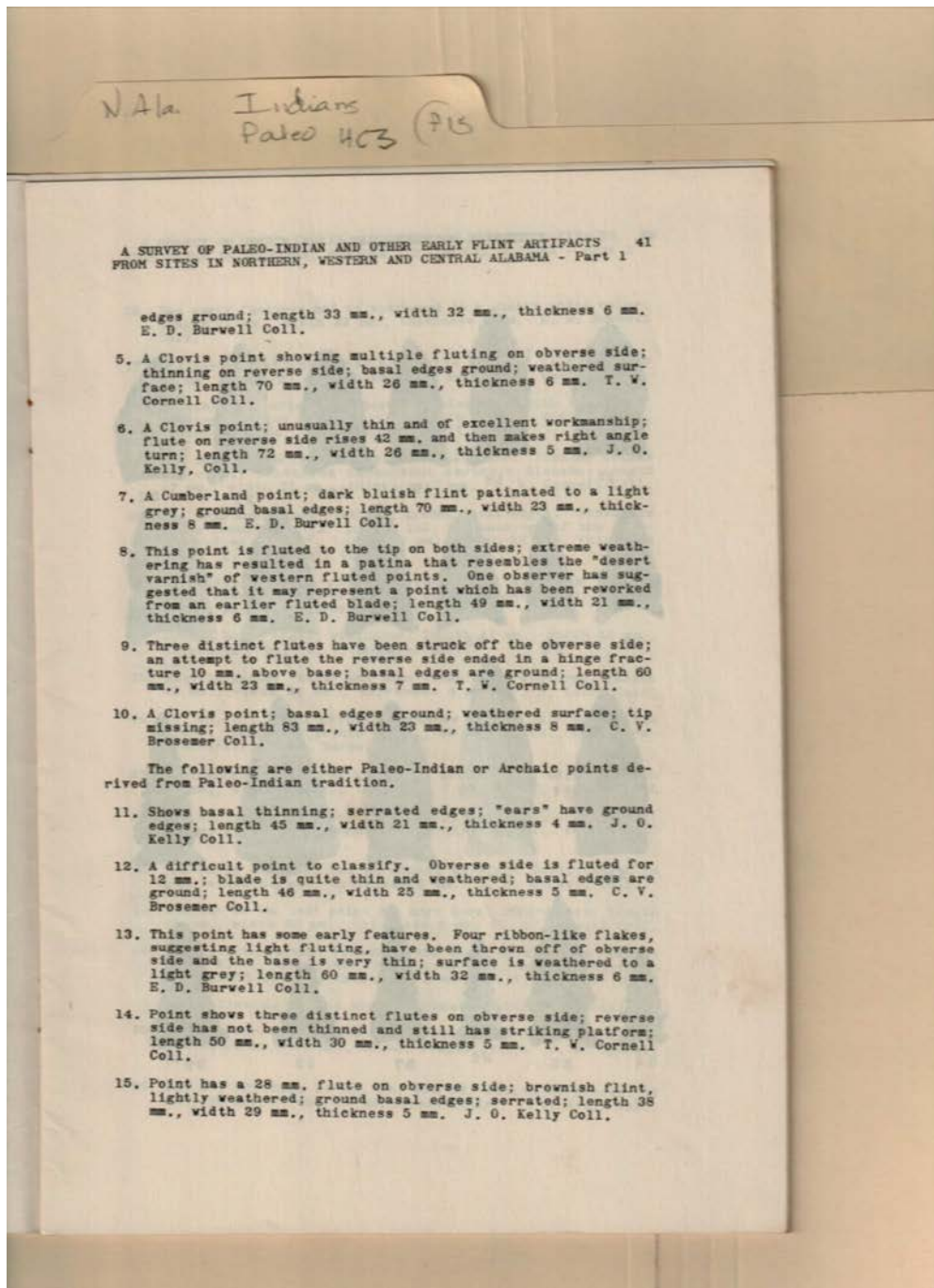


Names:
Artifacts

Types:
photo

Frances Cabaniss Roberts Collection: Series 4, Subseries C, Box 3, Folder 15
North Alabama Paleo Indians Article in "Tennessee Archaeologist," by Mahan, E.C., 1954 - Miscellaneous
Alabama

Image 6 r04c03-15-000-0264 [Contents](#) [Index](#) [About](#)



Names:

Artifacts
Brosemer, C. V.

Burwell, E. D.

Cornell, Tom W.
(Scoutmaster)

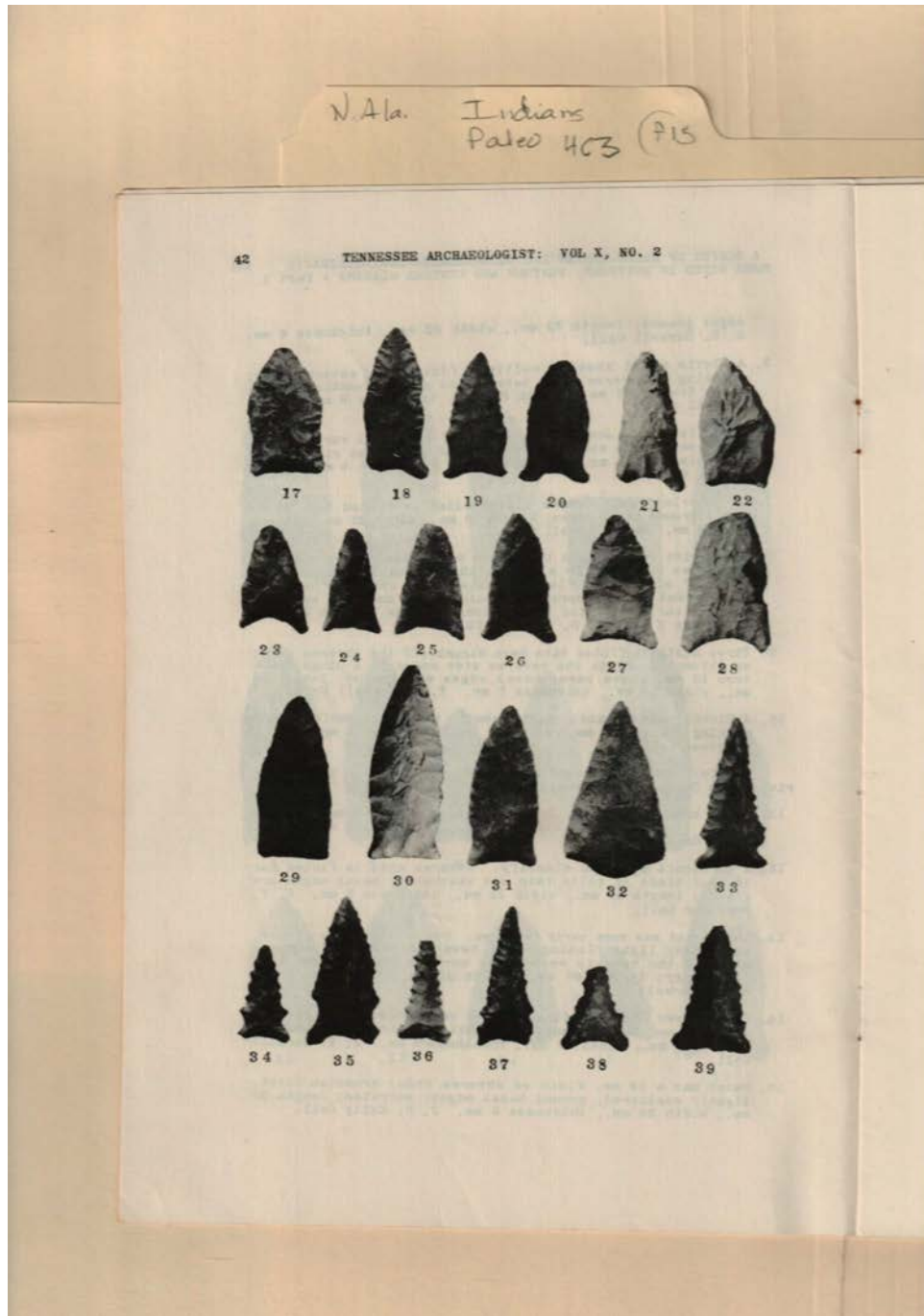
Kelly, J. O.

Types:

list

Frances Cabaniss Roberts Collection: Series 4, Subseries C, Box 3, Folder 15
North Alabama Paleo Indians Article in "Tennessee Archaeologist," by Mahan, E.C., 1954 - Miscellaneous
Alabama

Image 7 r04c03-15-000-0265 [Contents](#) [Index](#) [About](#)

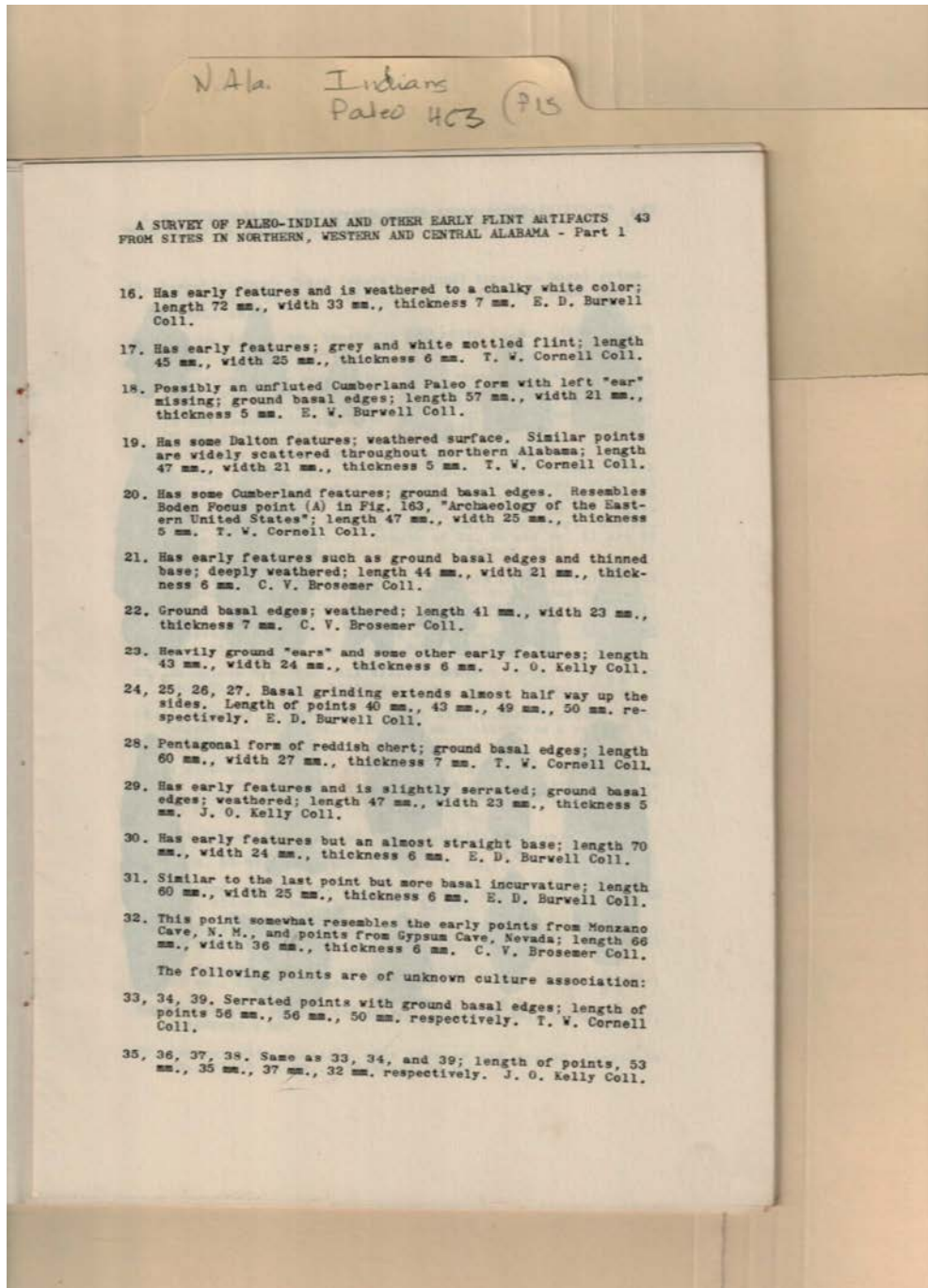


Names:
Artifacts

Types:
photo

Frances Cabaniss Roberts Collection: Series 4, Subseries C, Box 3, Folder 15
North Alabama Paleo Indians Article in "Tennessee Archaeologist," by Mahan, E.C., 1954 - Miscellaneous
Alabama

Image 8 r04c03-15-000-0266 [Contents](#) [Index](#) [About](#)



Names:

Artifacts
Brosemer, C. V.

Burwell, E. D.

Cornell, Tom W.
(Scoutmaster)

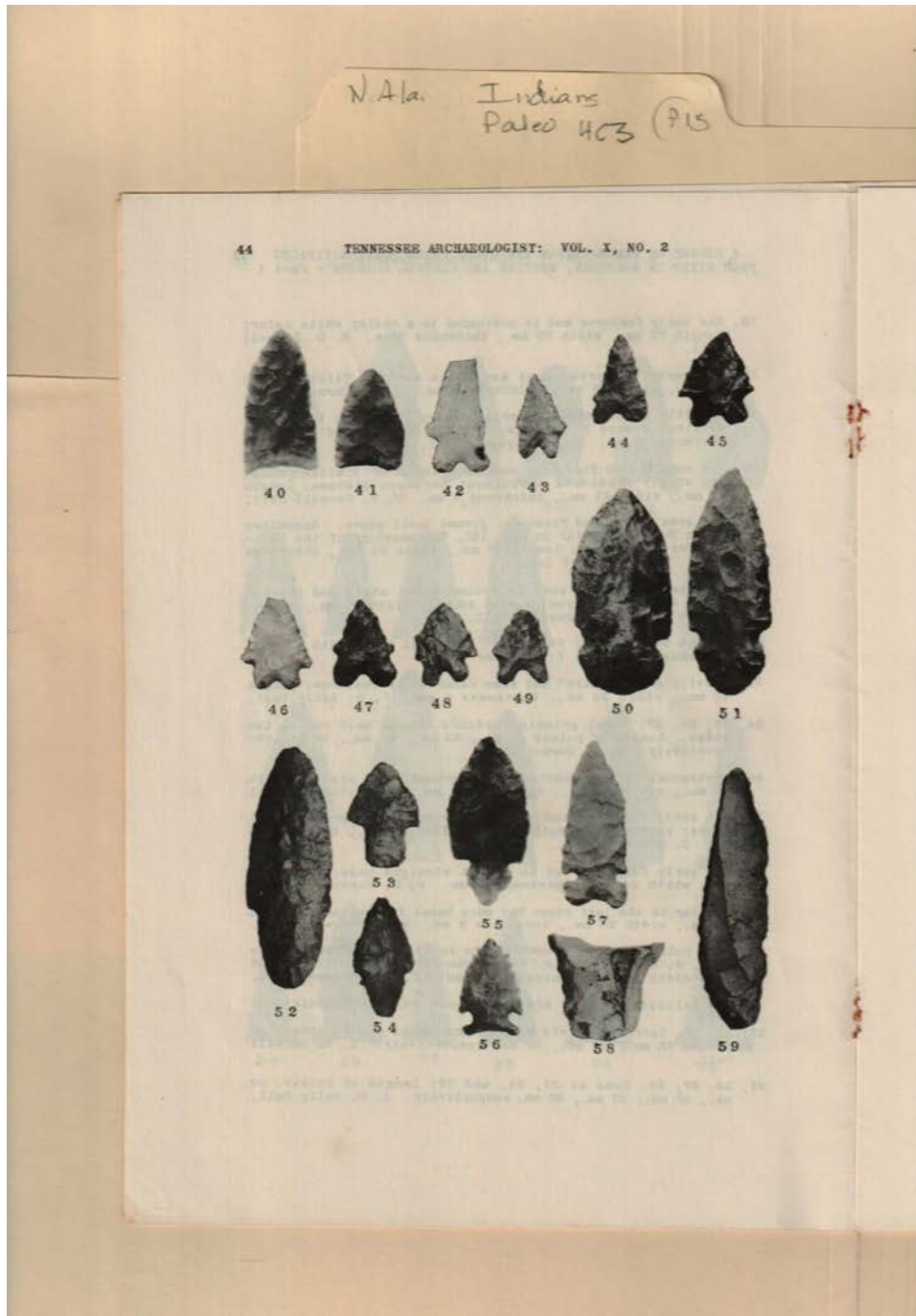
Kelly, J. O.

Types:

list

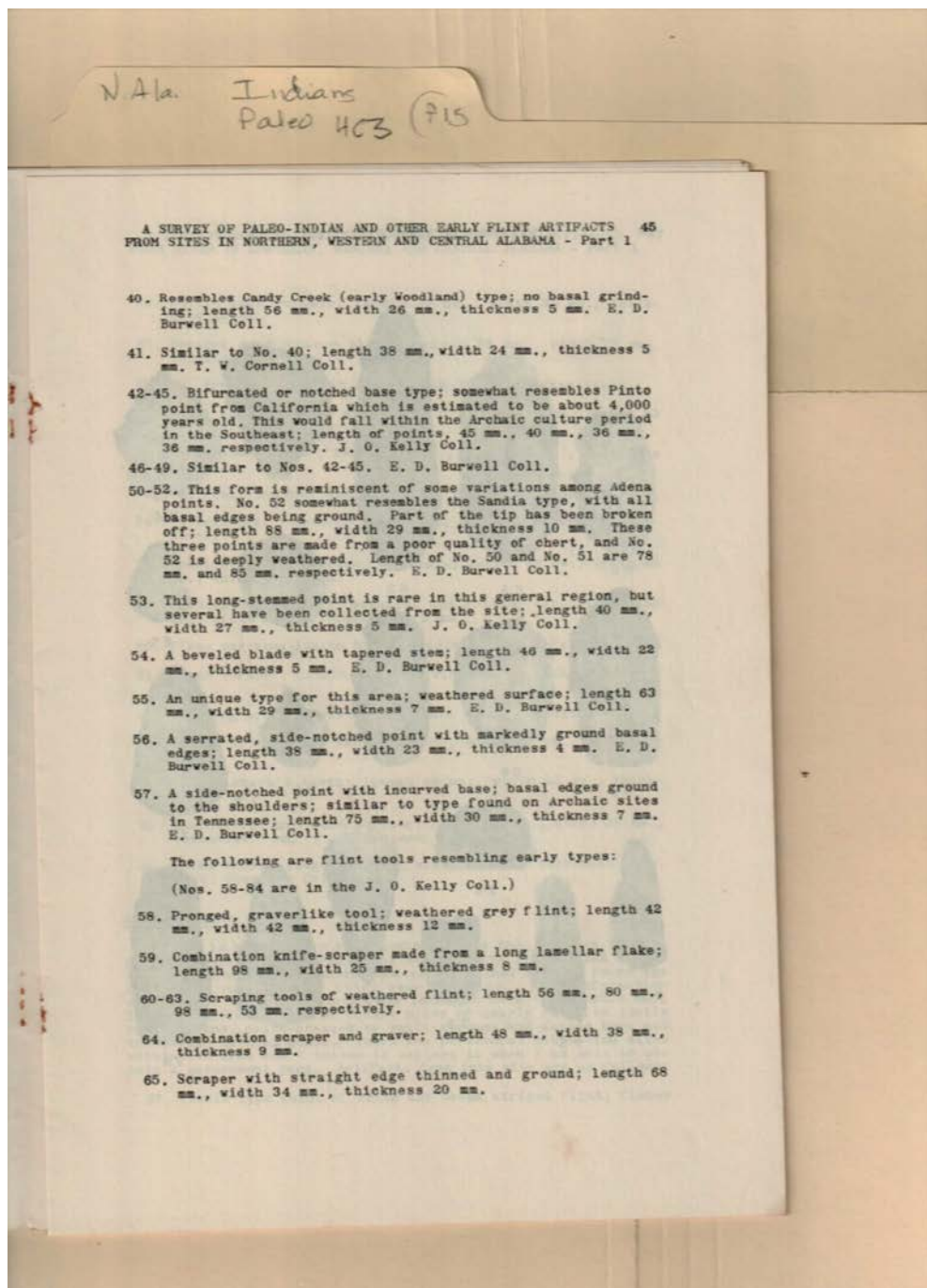
Frances Cabaniss Roberts Collection: Series 4, Subseries C, Box 3, Folder 15
North Alabama Paleo Indians Article in "Tennessee Archaeologist," by Mahan, E.C., 1954 - Miscellaneous
Alabama

Image 9 r04c03-15-000-0267 [Contents](#) [Index](#) [About](#)



Names:
Artifacts

Types:
photo



Names:

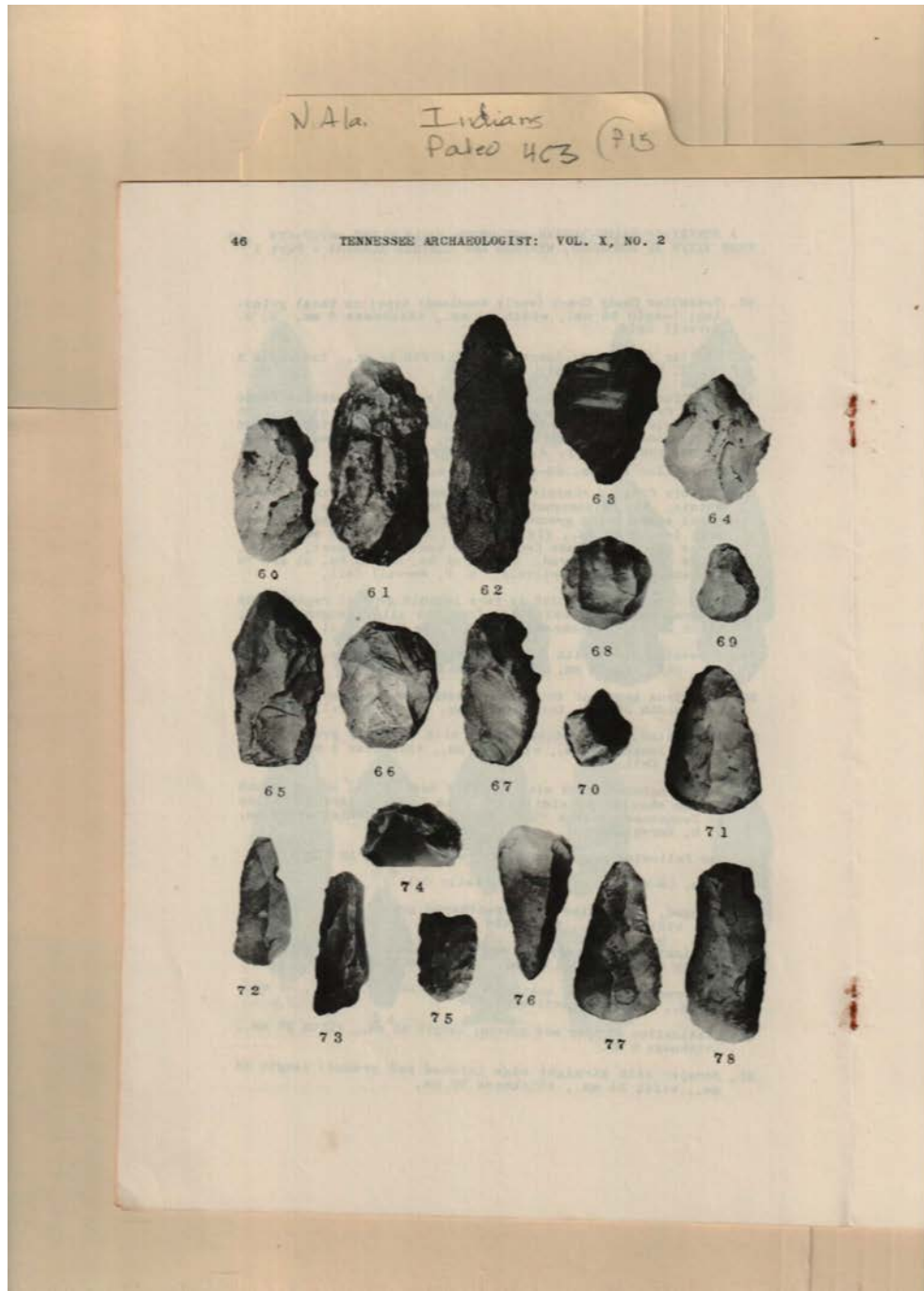
Burwell, E. D.

Cornell, Tom W.
(Scoutmaster)

Kelly, J. O.

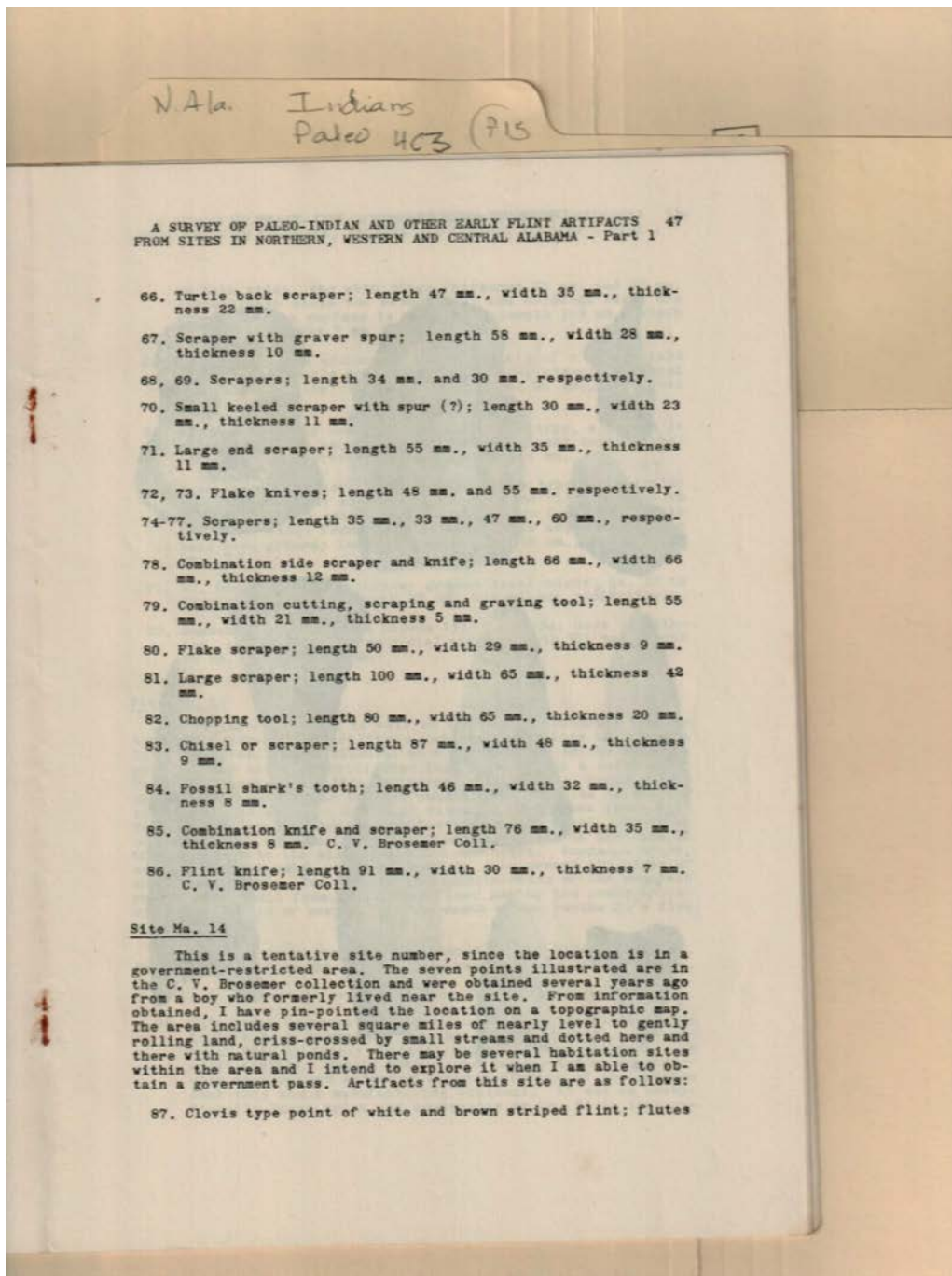
Types:

list



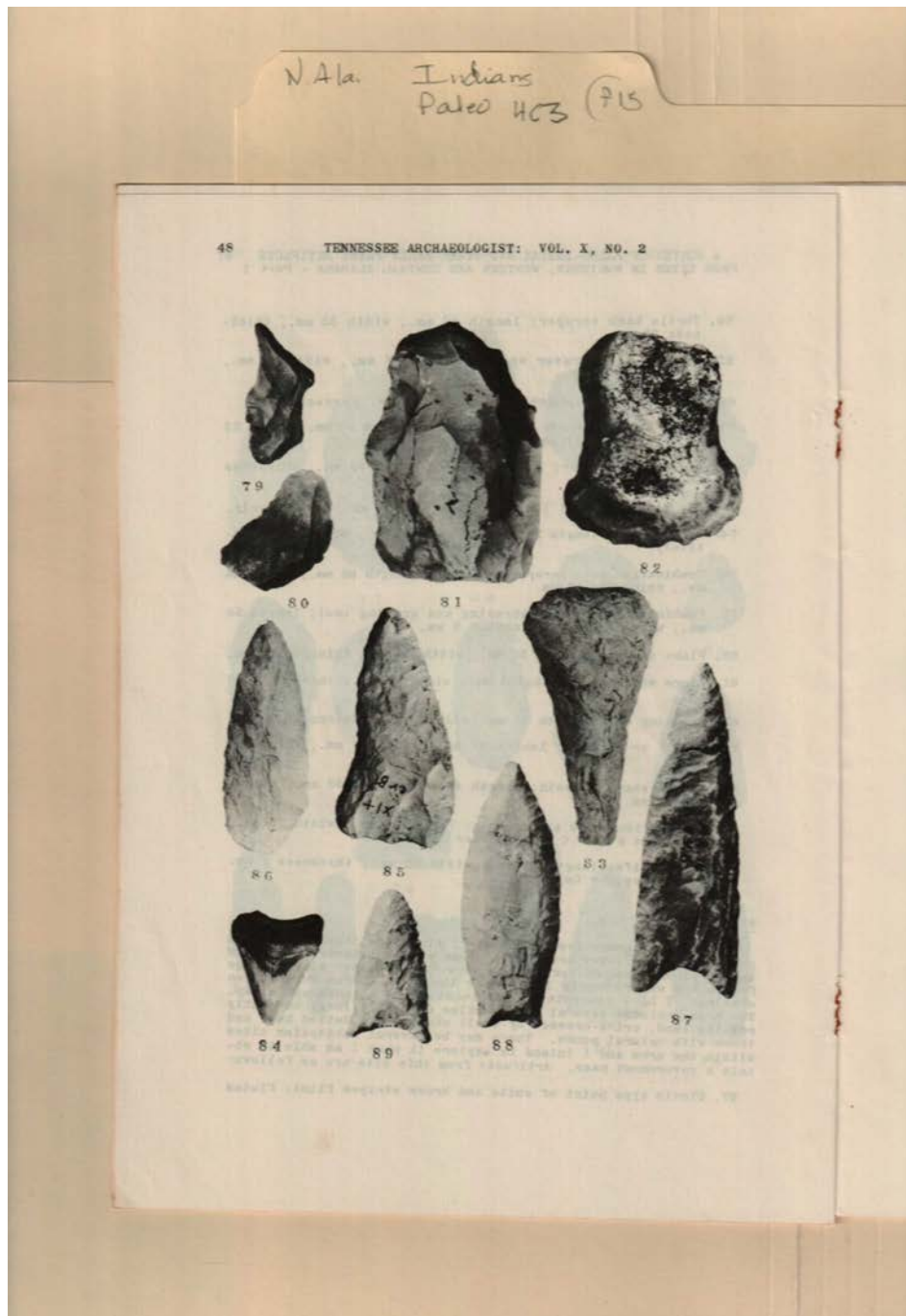
Names:
Artifacts

Types:
photo



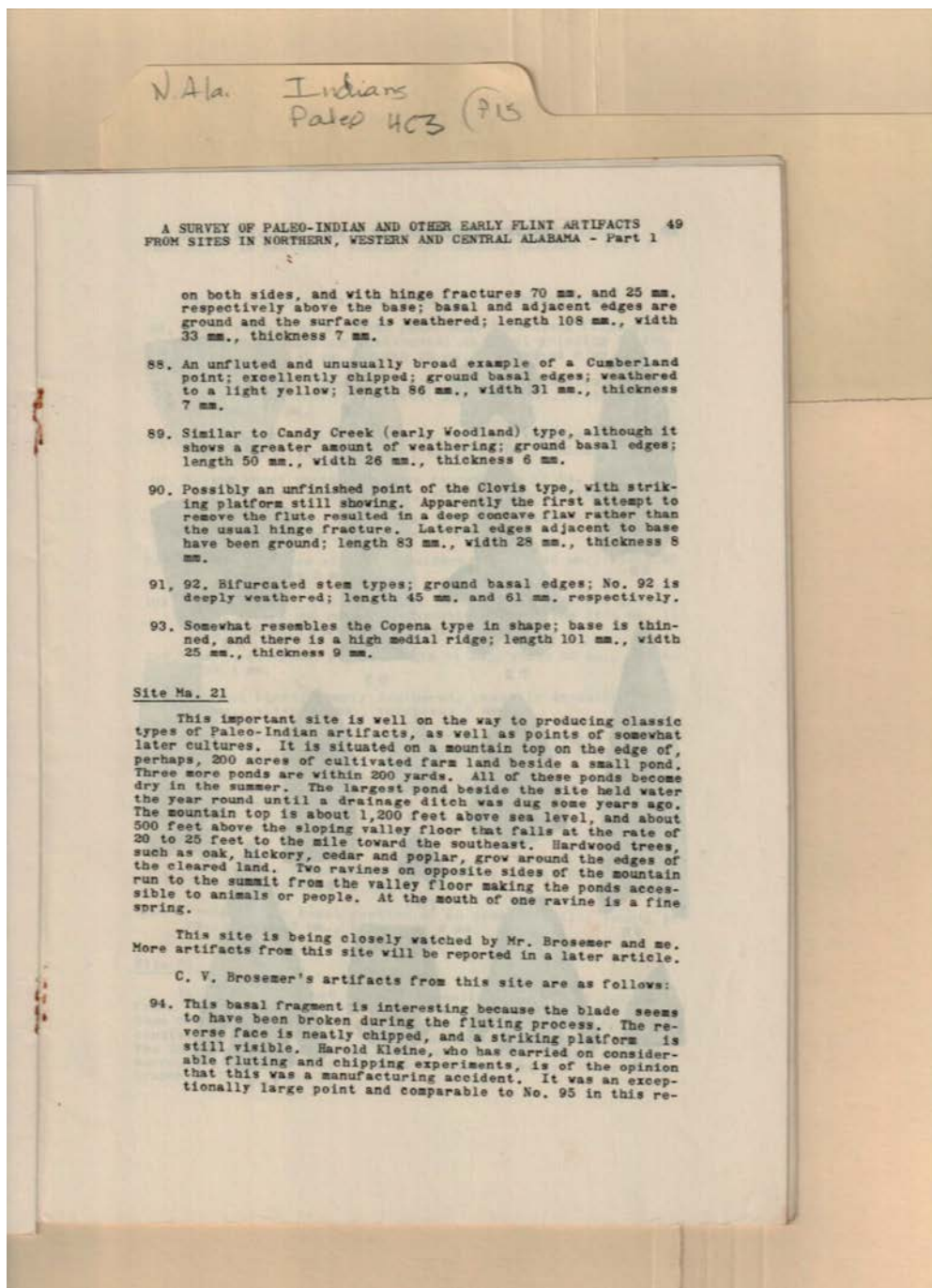
Names:
Artifacts
Types:
list

Brosemer, C. V.



Names:
Artifacts

Types:
photo



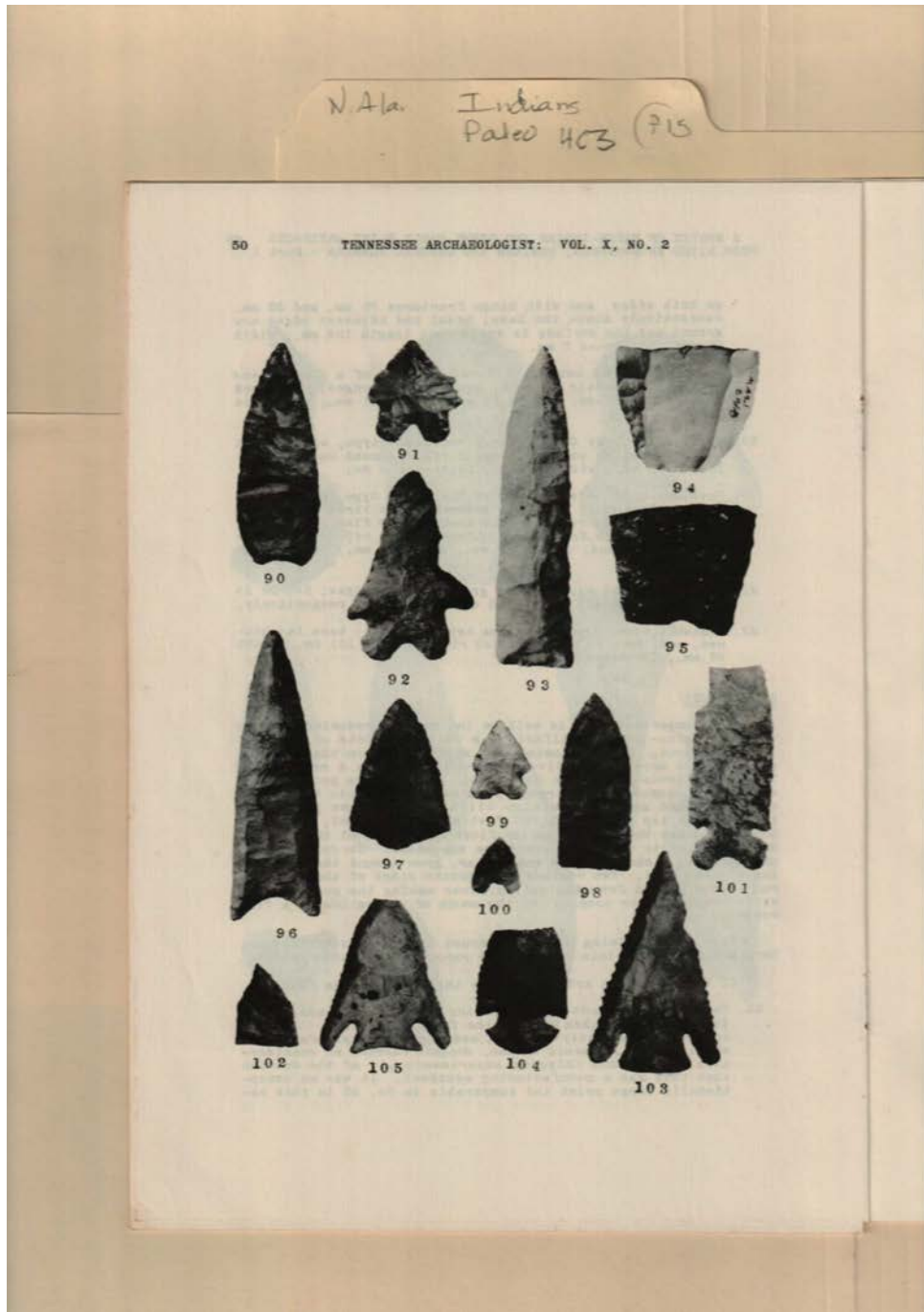
Names:
Artifacts

Types:
list

Brosemer, C. V. Kleine, Harold

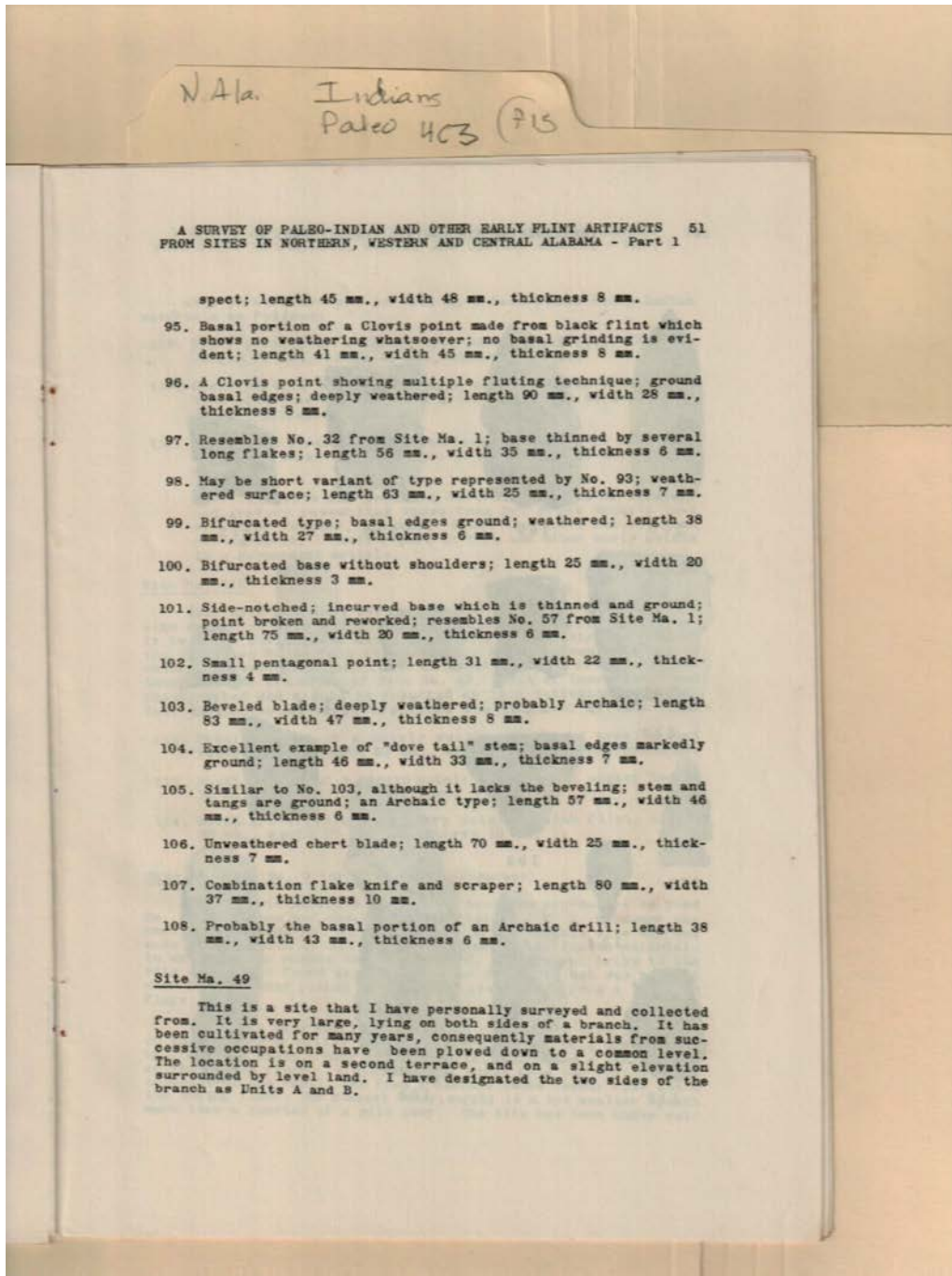
newsletter

Frances Cabaniss Roberts Collection: Series 4, Subseries C, Box 3, Folder 15
North Alabama Paleo Indians Article in "Tennessee Archaeologist," by Mahan, E.C., 1954 - Miscellaneous
Alabama
Image 15 r04c03-15-000-0273 [Contents](#) [Index](#) [About](#)



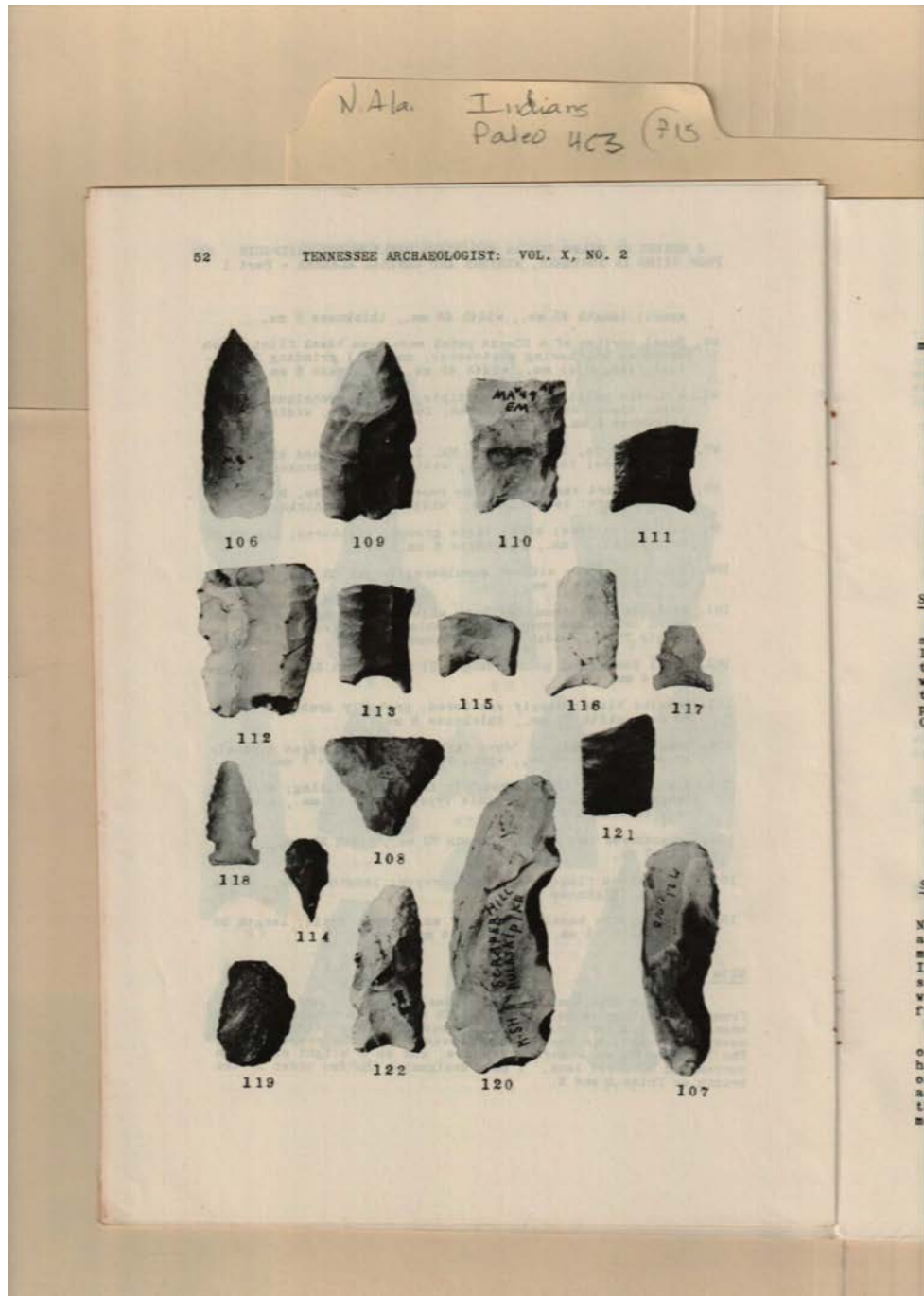
Names:
Artifacts

Types:
photo



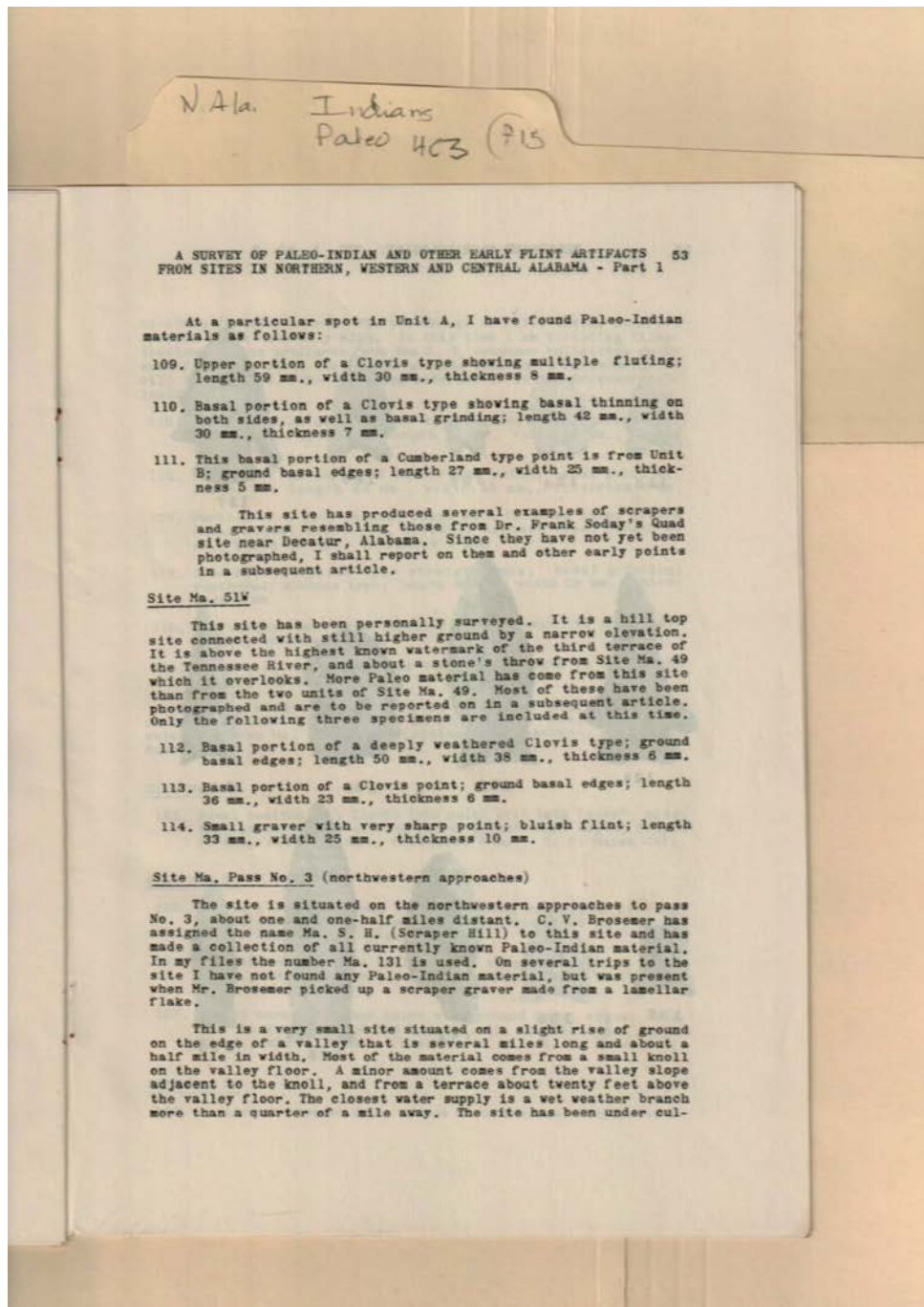
Names:
Artifacts

Types:
list



Names:
Artifacts

Types:
photo



Names:

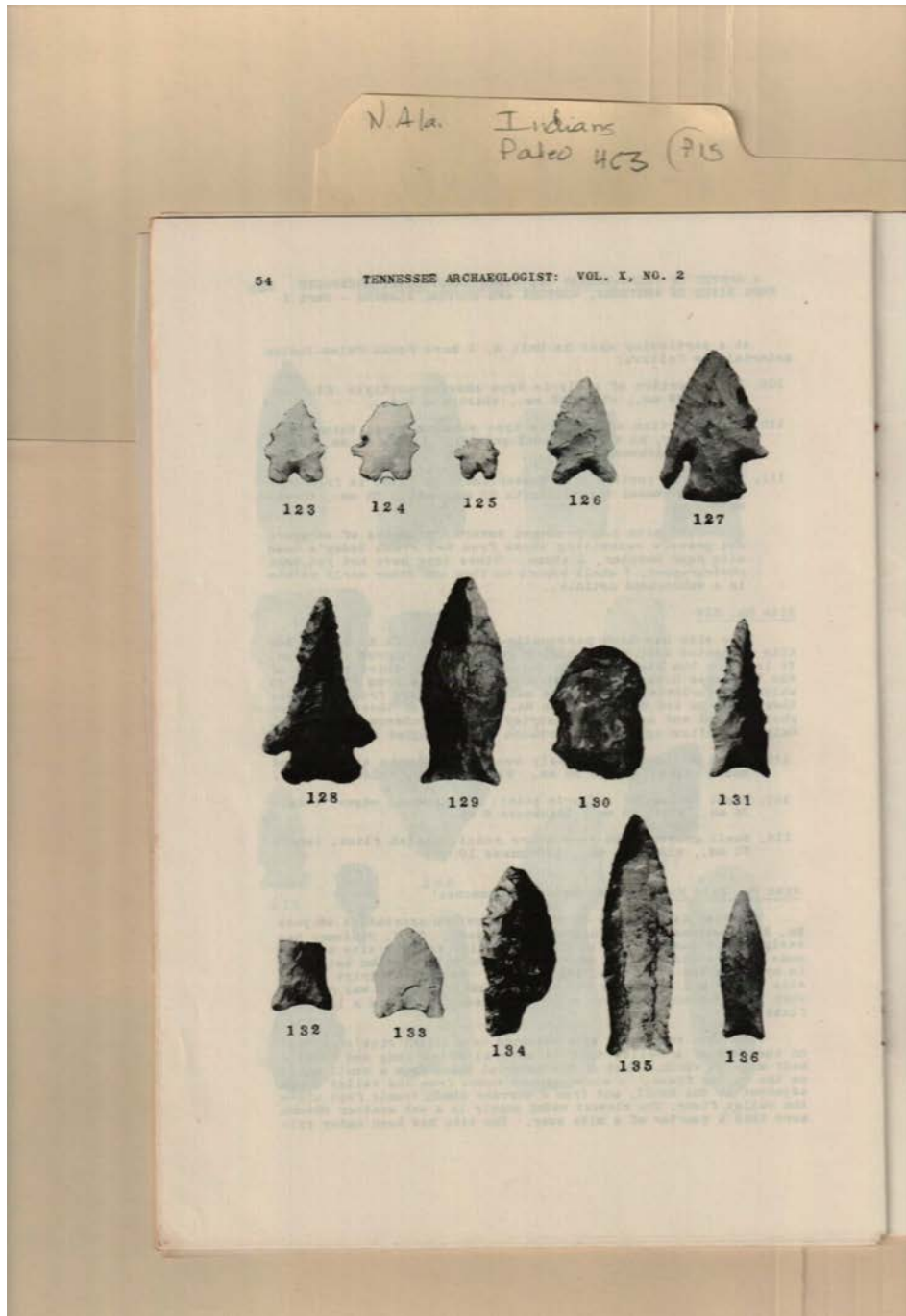
Brosemer, C. V.

Soday, Frank, Dr.

Types:

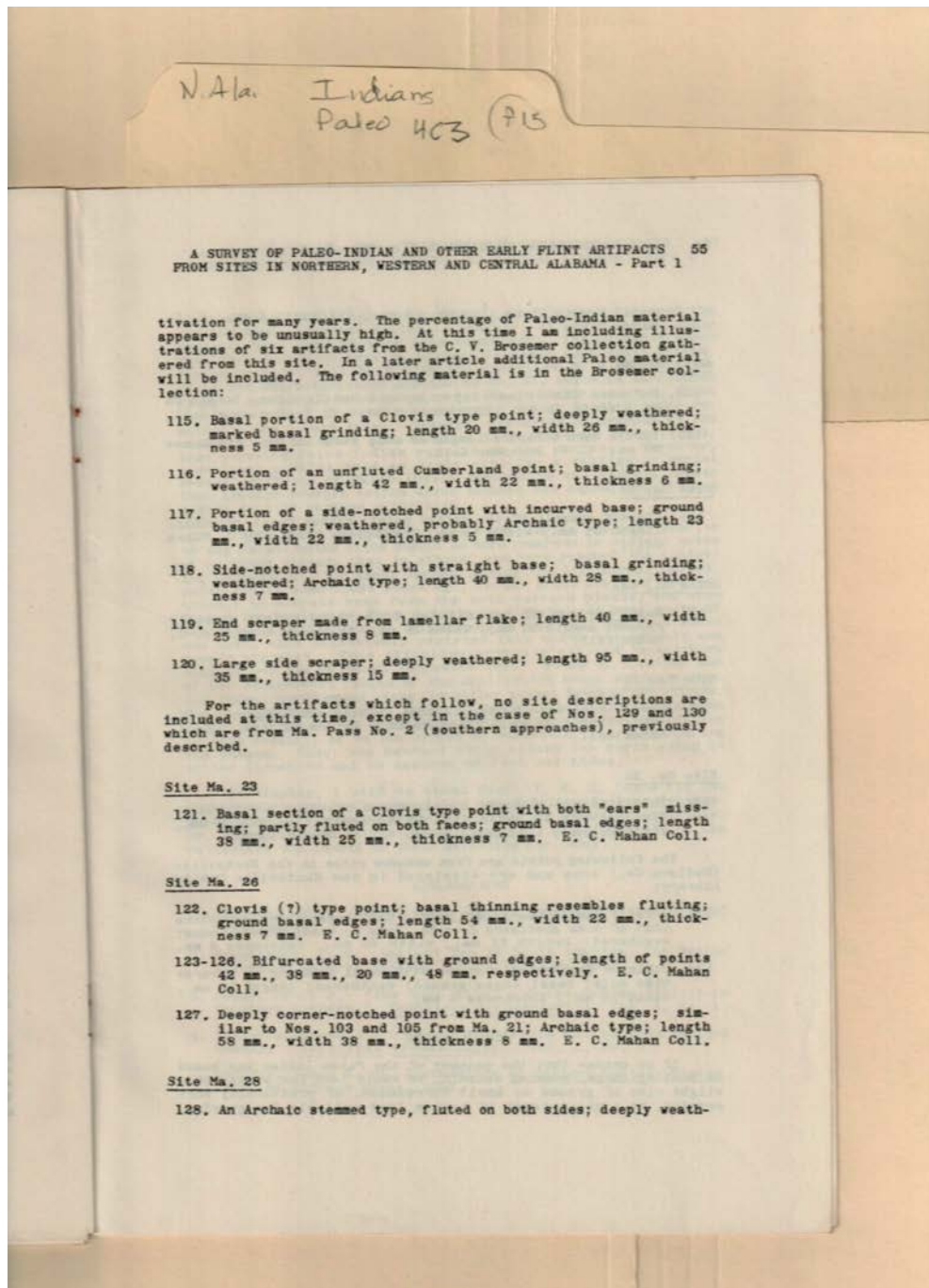
newsletter

Frances Cabaniss Roberts Collection: Series 4, Subseries C, Box 3, Folder 15
North Alabama Paleo Indians Article in "Tennessee Archaeologist," by Mahan, E.C., 1954 - Miscellaneous
Alabama
Image 19 r04c03-15-000-0277 [Contents](#) [Index](#) [About](#)



Names:
Artifacts

Types:
photo



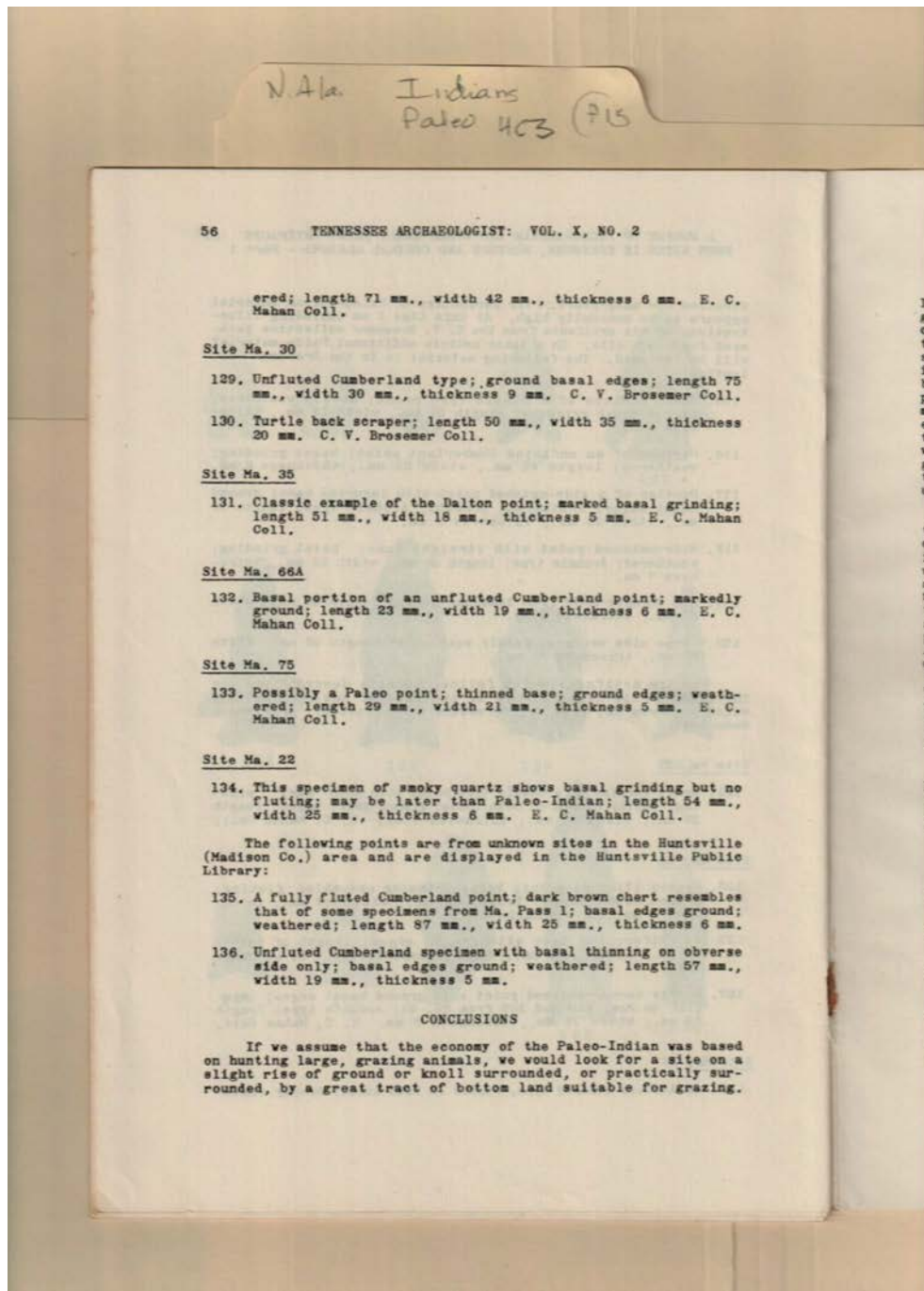
Names:

Brosemer, C. V.

Mahan, E. C.

Types:

list



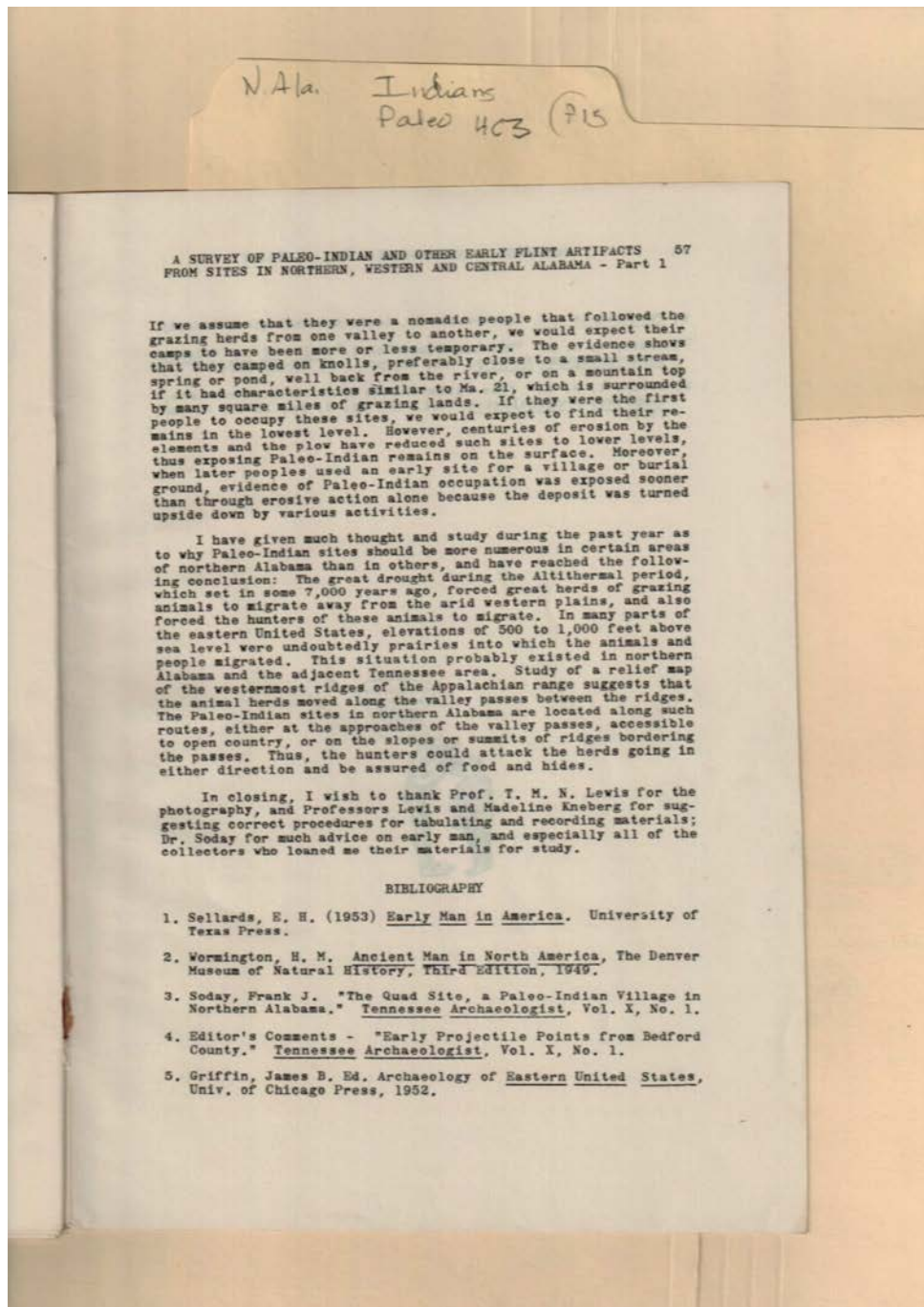
Names:

Brosemer, C. V.

Mahan, E. C.

Types:

list



Names:

Griffin, James B.
Kneberg, Madeline

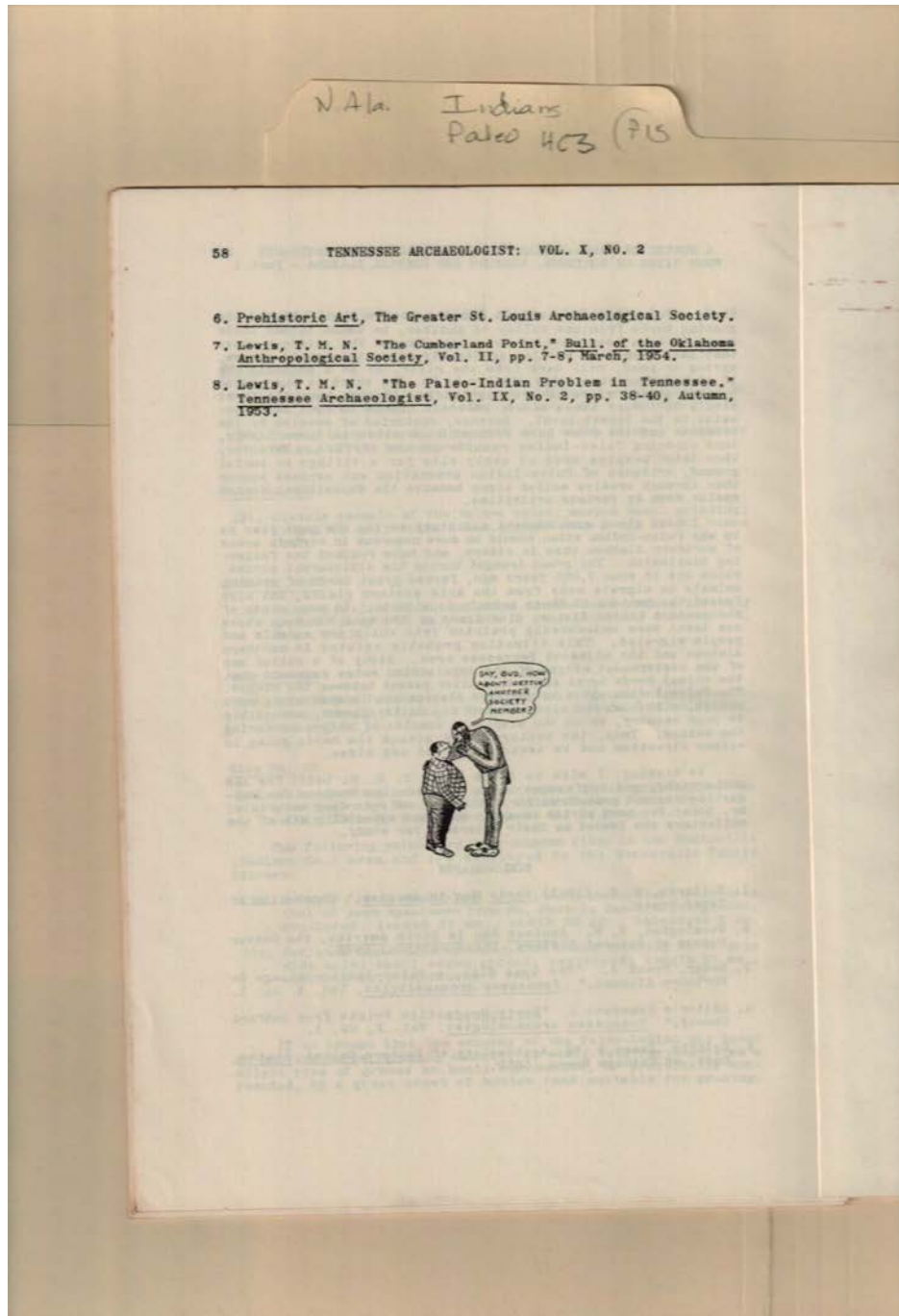
Lewis, T. M. N.
Sellards, E. H.

Soday, Frank J., Dr.
Wormington, H. M.

Types:

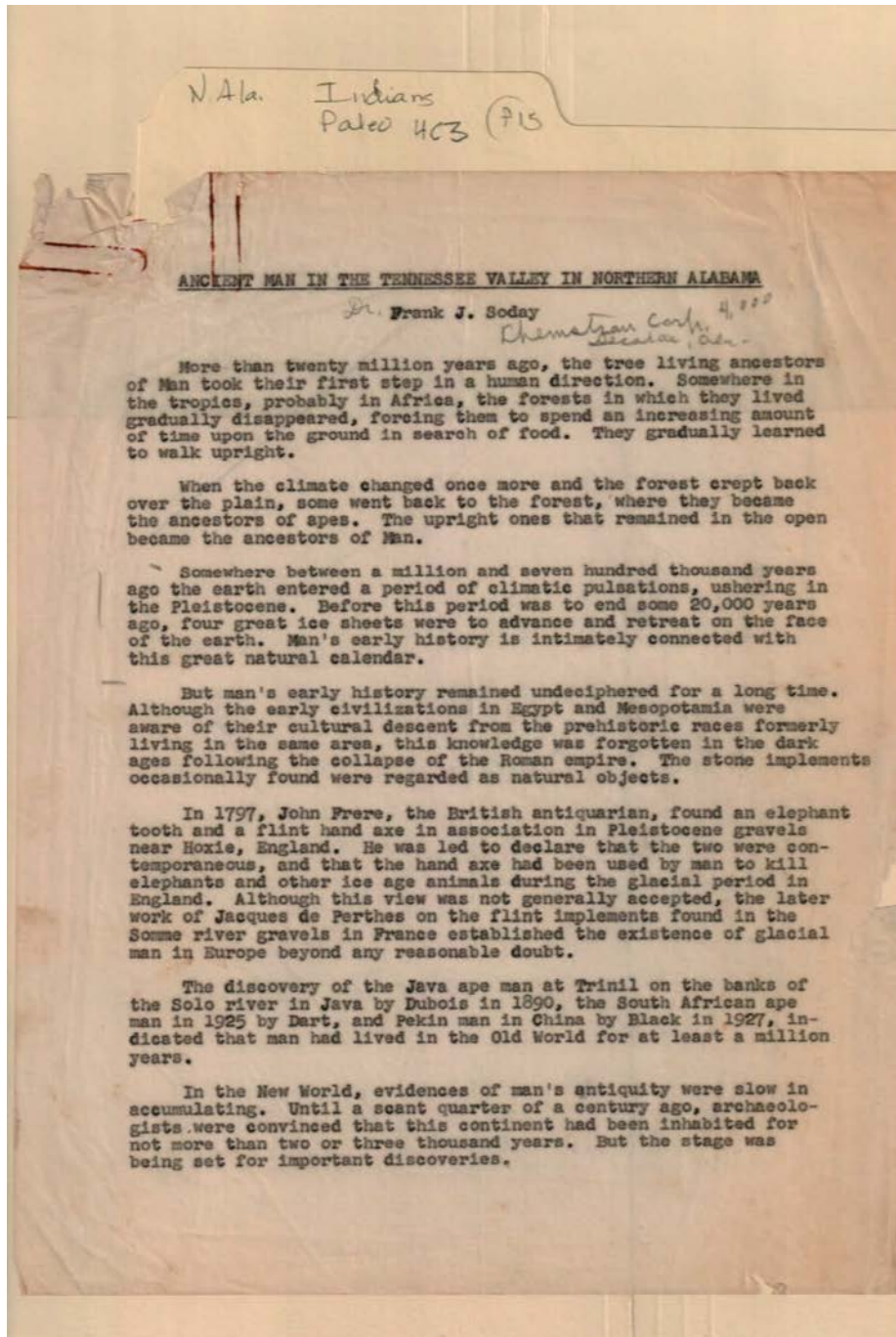
newsletter

Frances Cabaniss Roberts Collection: Series 4, Subseries C, Box 3, Folder 15
North Alabama Paleo Indians Article in "Tennessee Archaeologist," by Mahan, E.C., 1954 - Miscellaneous
Alabama
Image 23 r04c03-15-000-0281 [Contents](#) [Index](#) [About](#)



Names:
Lewis, T. M. N.

Types:
newsletter



Names:

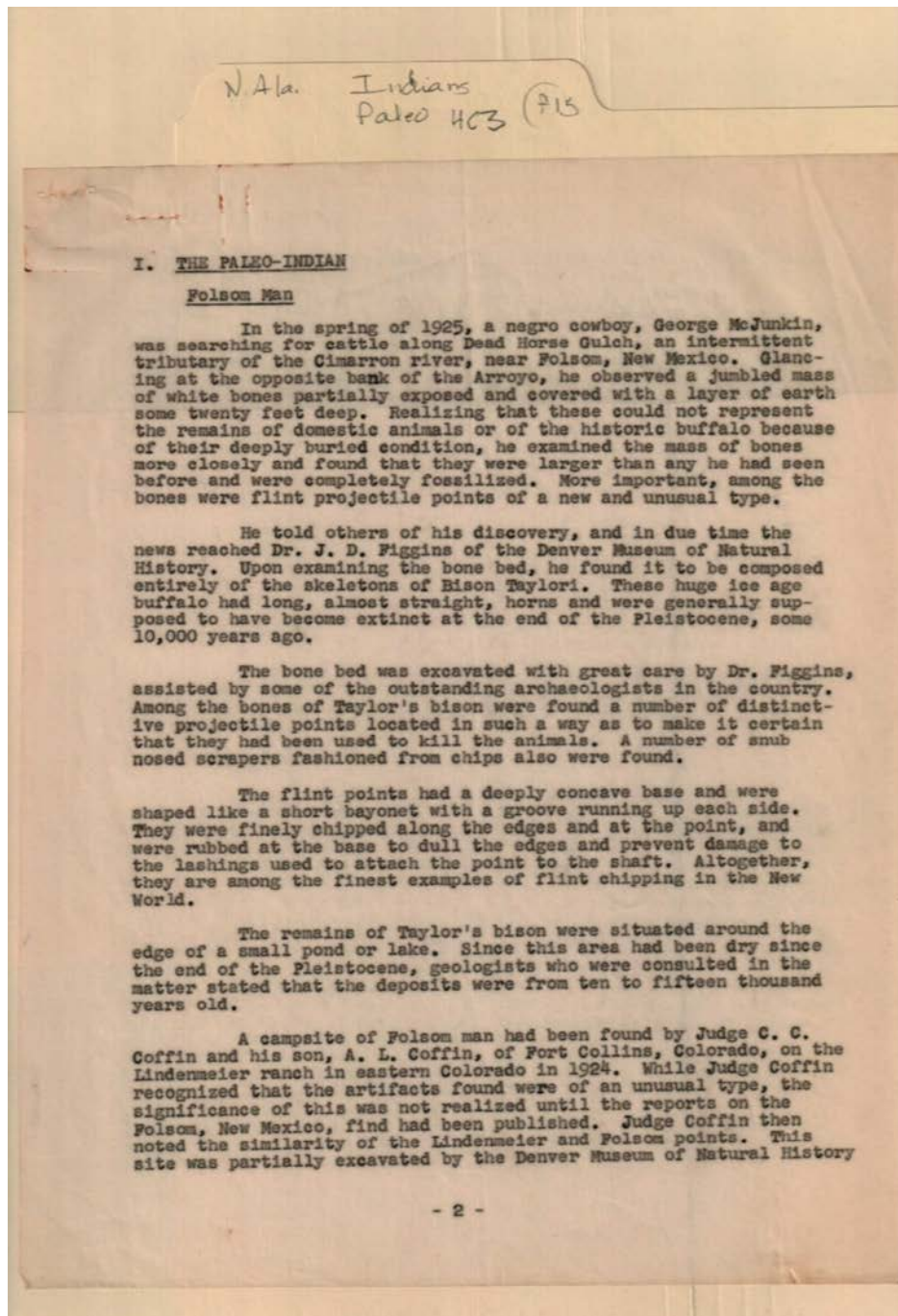
Black,
Dart,
Dubois,

Frere, John
Soday, Frank J., Dr.

Ancient Man in
Tennessee Valley
de Perthes, Jacques

Types:

newsletter

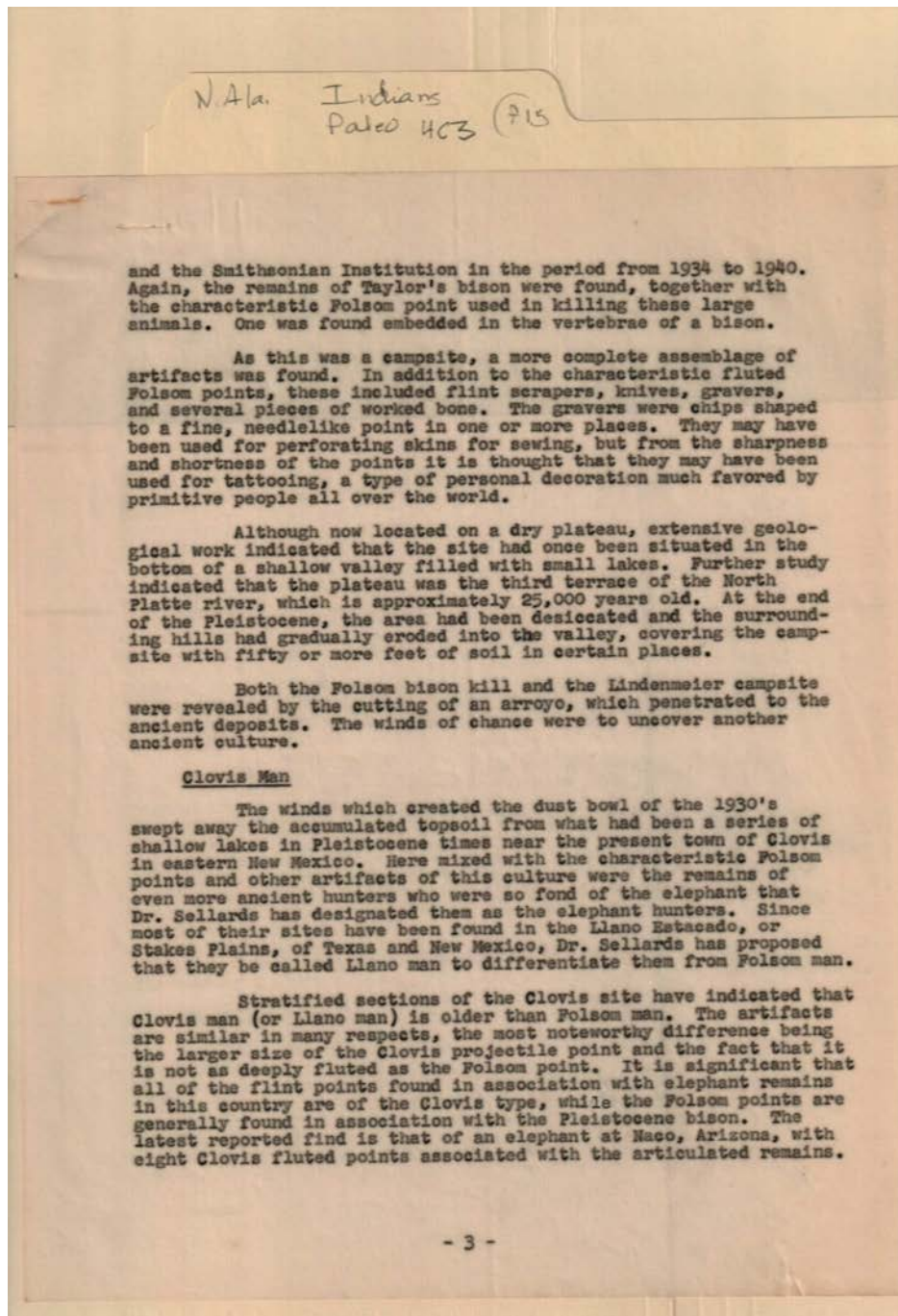


Names:

Coffin, A. L.	Figgins, J. D., Dr.	Lindenmeier,	Taylor,
Coffin, C. C., Judge	Folsom Man	McJunkin, George	

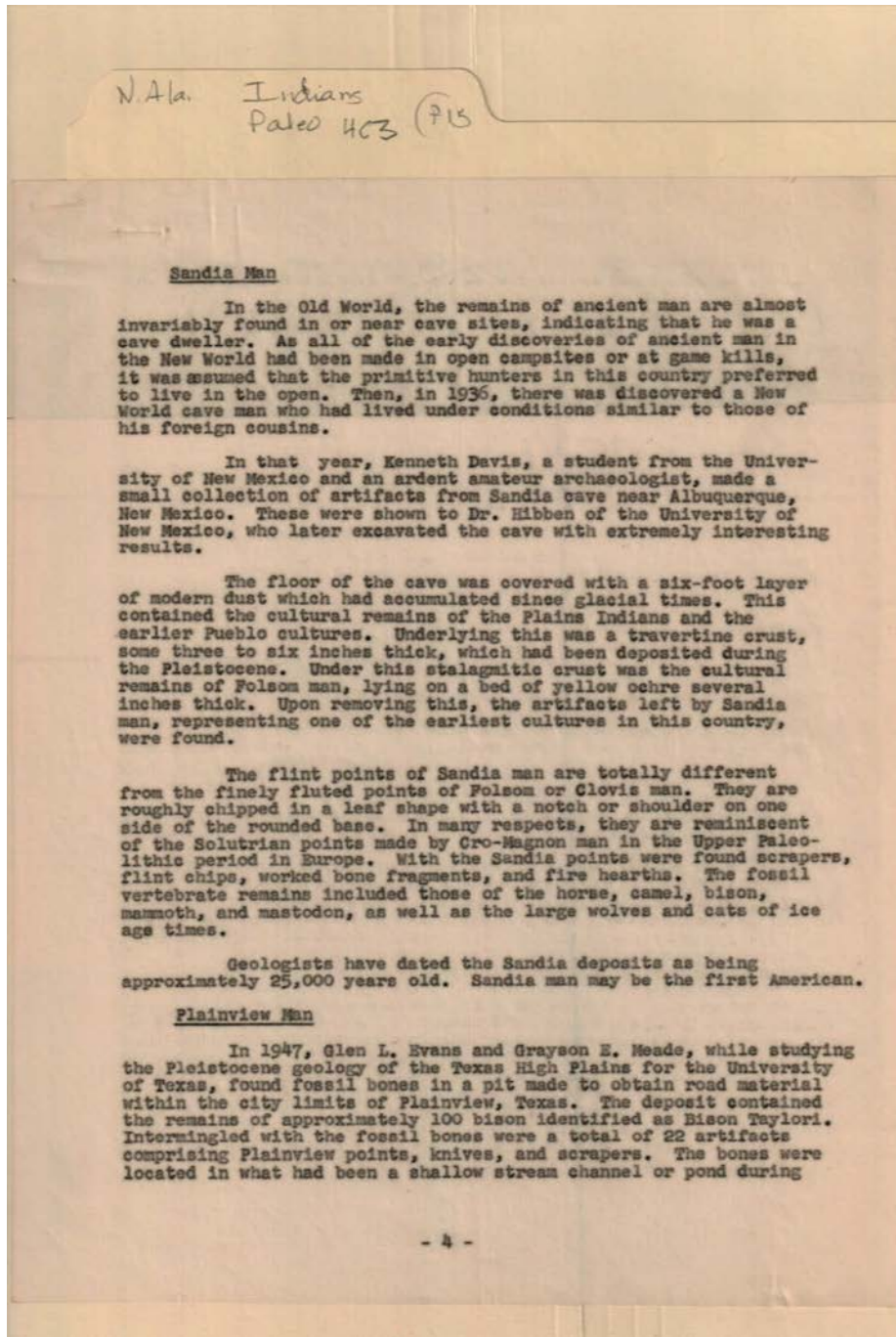
Types:

newsletter



Names:
Sellards, Dr.

Types:
newsletter



Names:

Davis, Kenneth

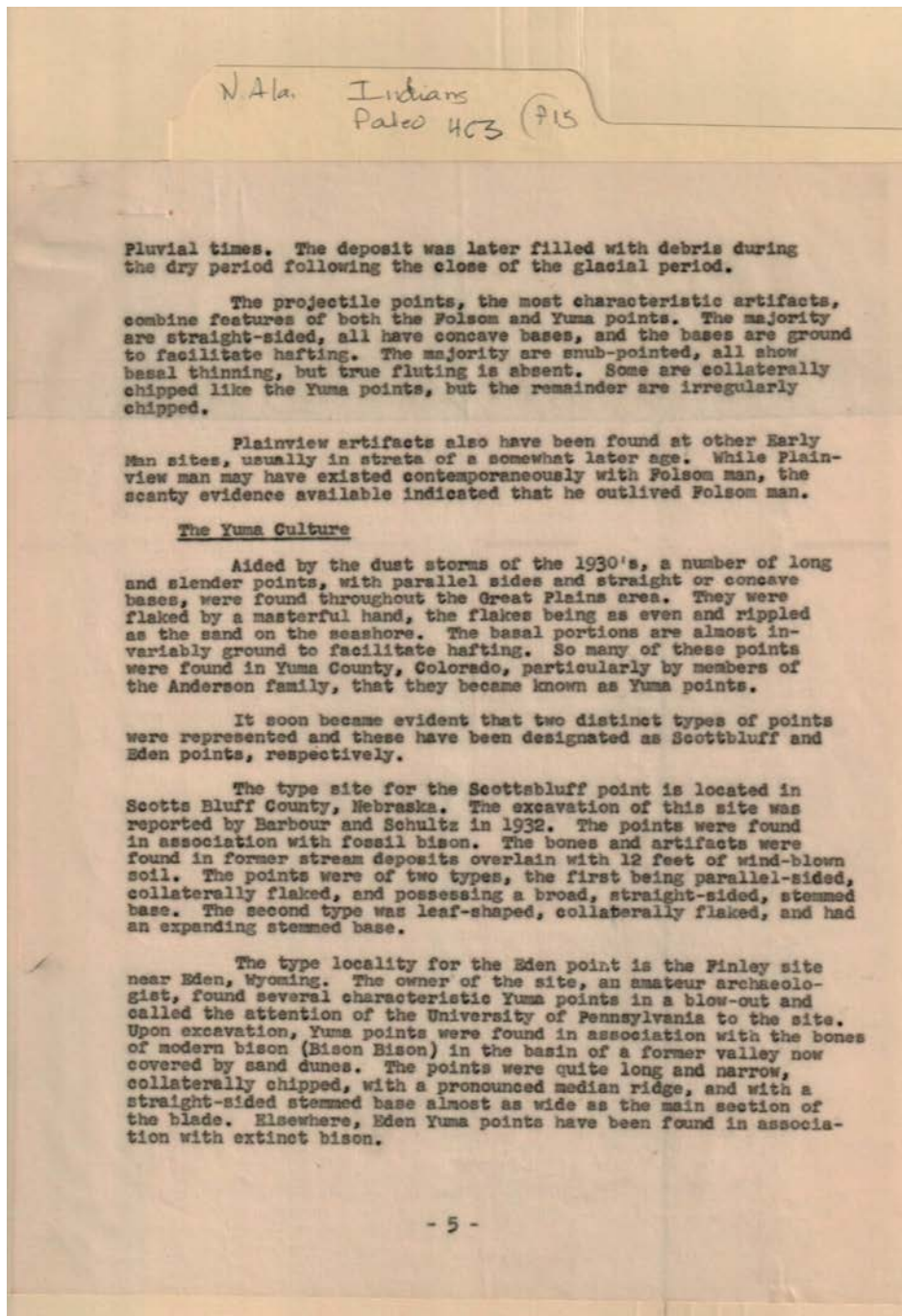
Evans, Glen L.

Hibben, Dr.

Meade, Grayson E.

Types:

newsletter



Names:

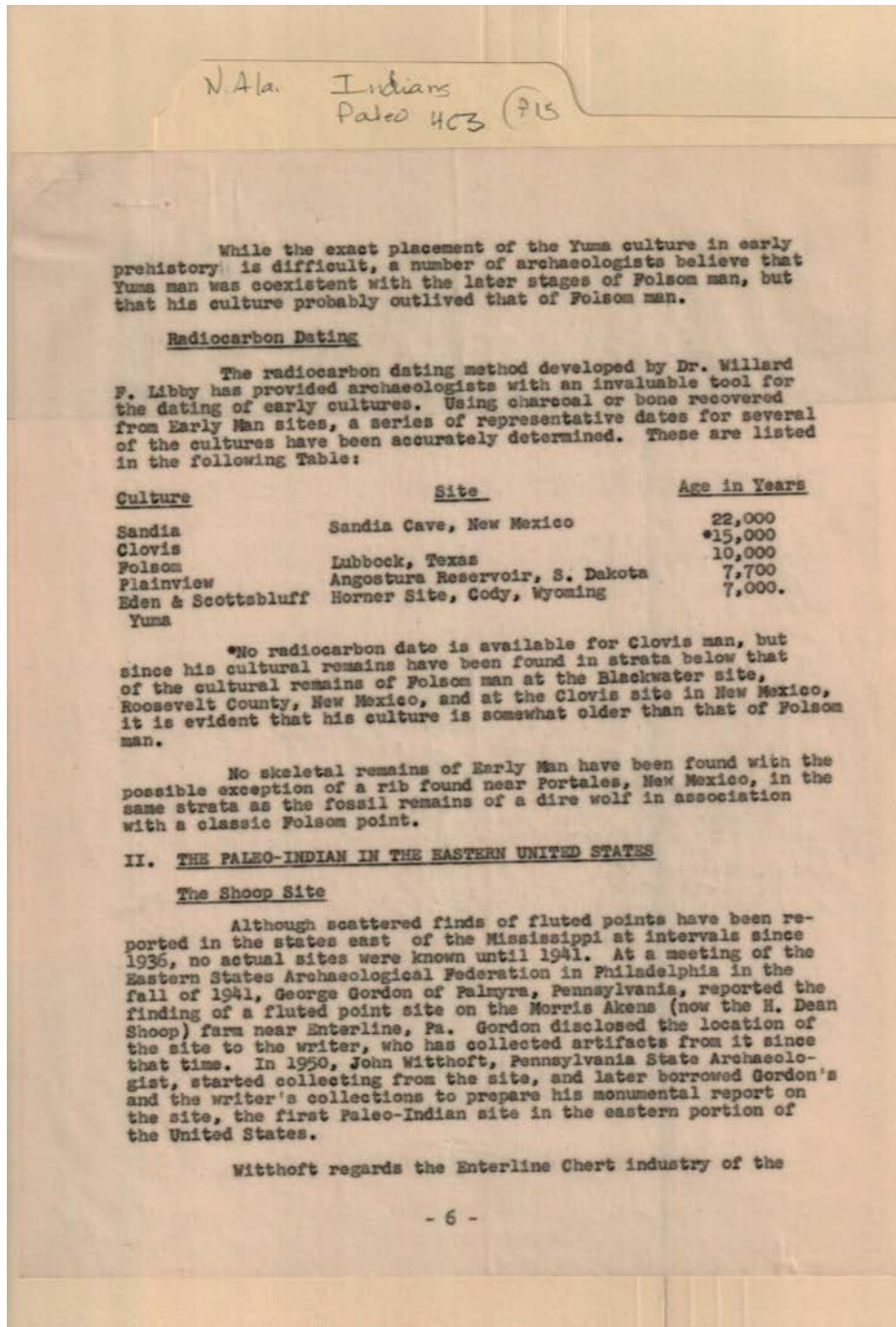
Anderson,

Barbour,

Schultz,

Types:

newsletter



Names:

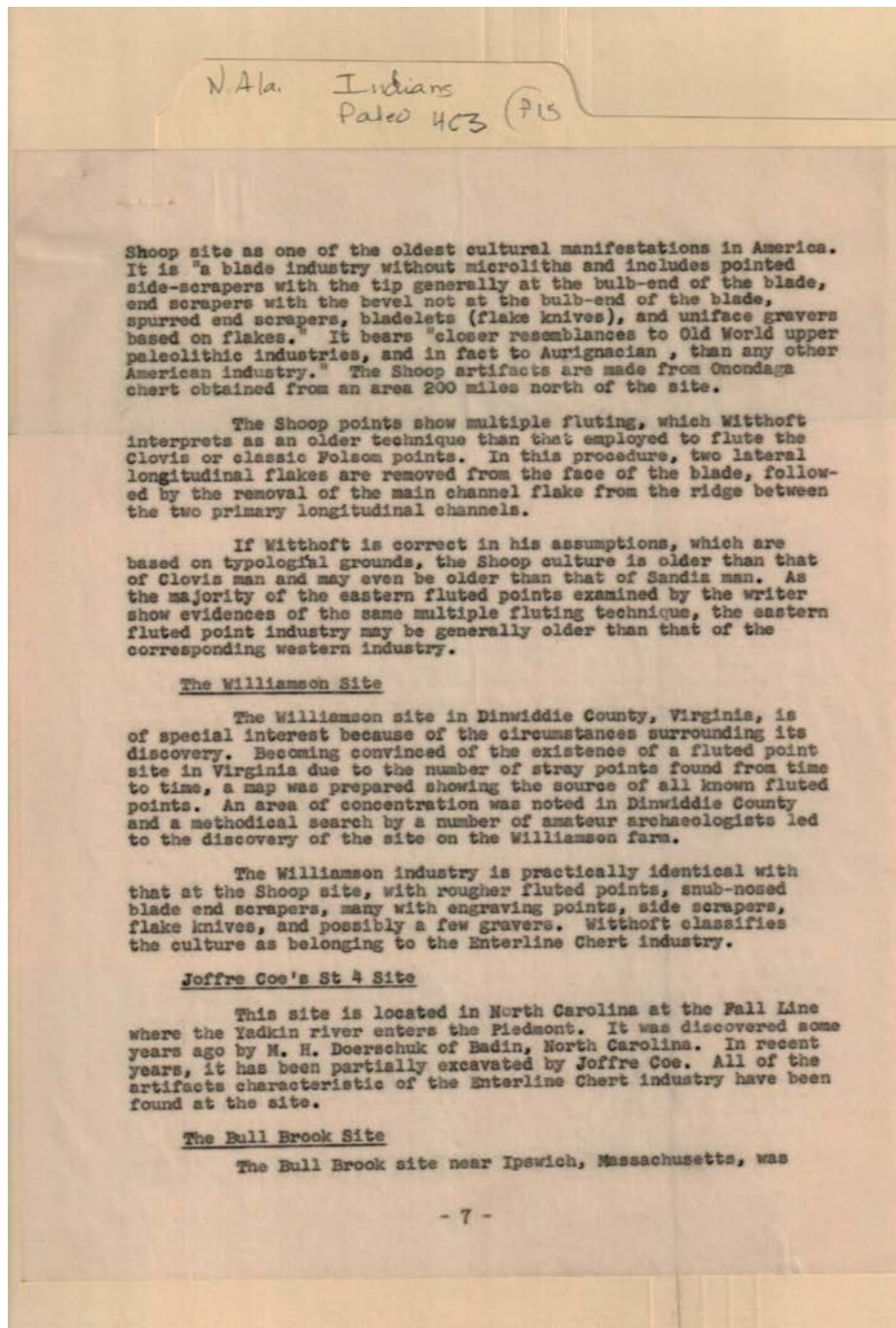
Akens, Morris
 Gordon, George

Libby, Willard F., Dr.
 Shoop, H. Dean

Witthoft, John

Types:

newsletter



Names:

Coe, Joffre

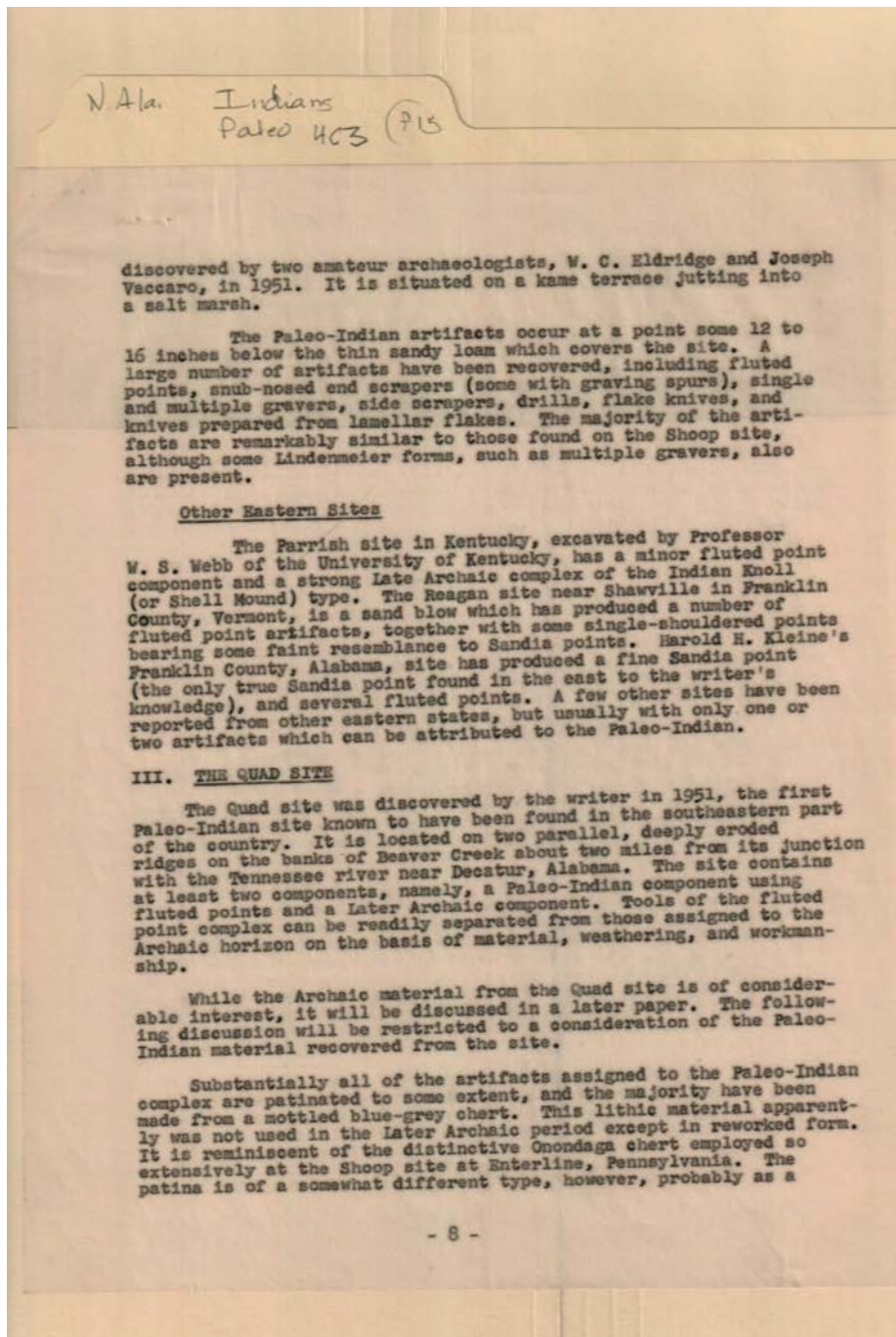
Doerschuk, M. H.

Shoop, H. Dean

Witthoft,

Types:

newsletter



Names:

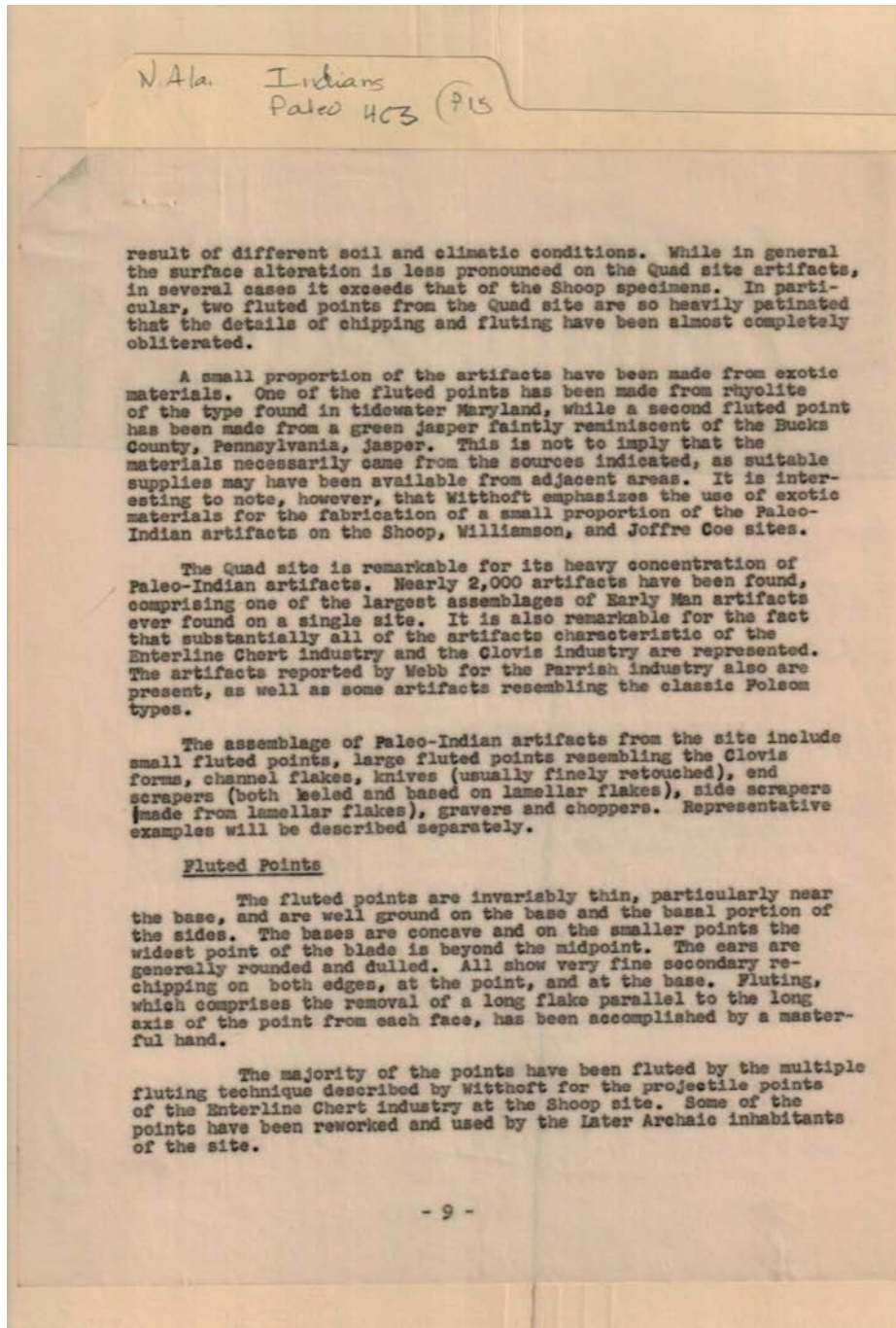
Eldridge, W. C.
Kleine, Harold H.

Vaccaro, Joseph

Webb, W. S.,
Professor

Types:

newsletter



Names:

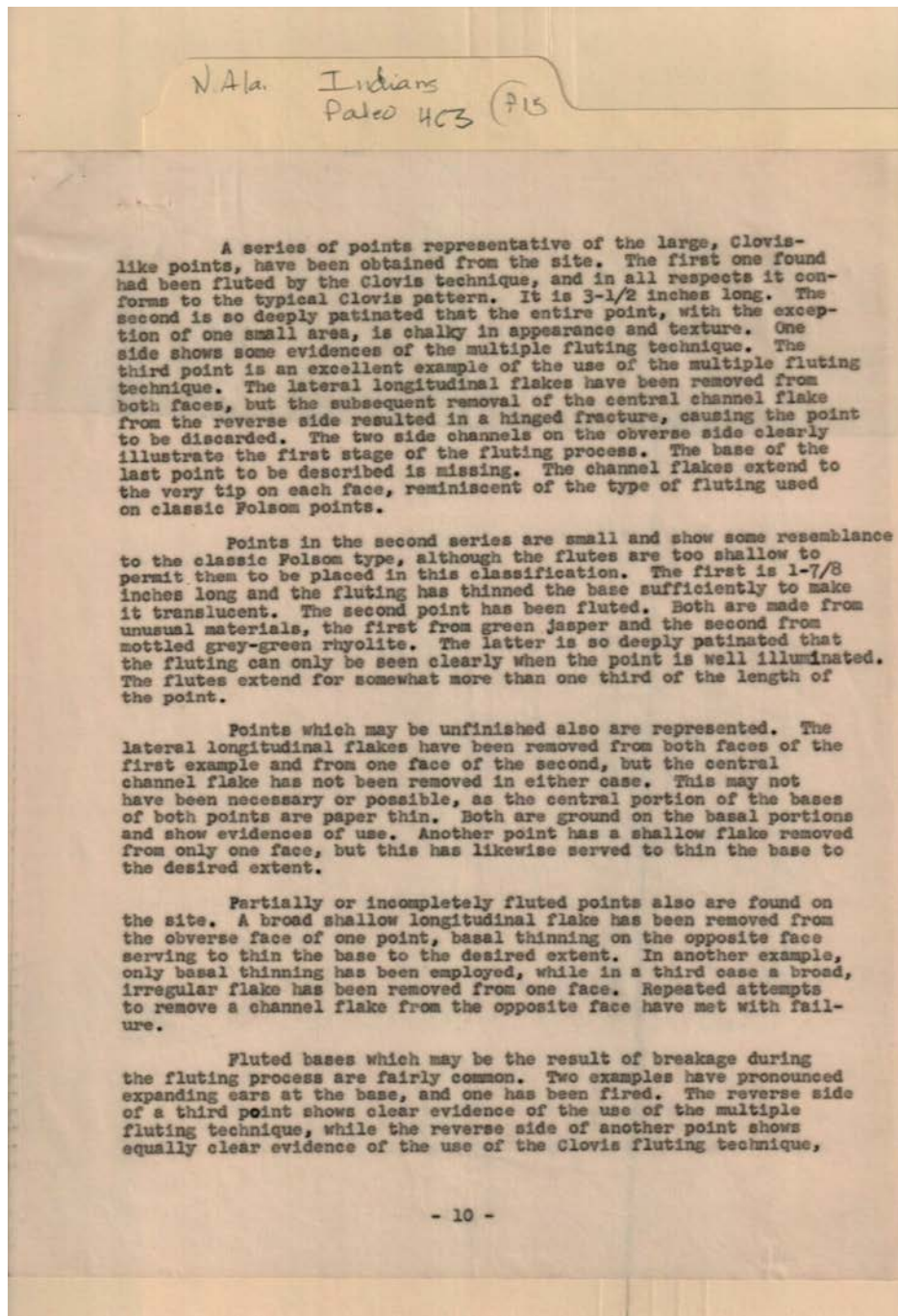
Coe, Joffre
Shoop,

Webb,
Williamson,

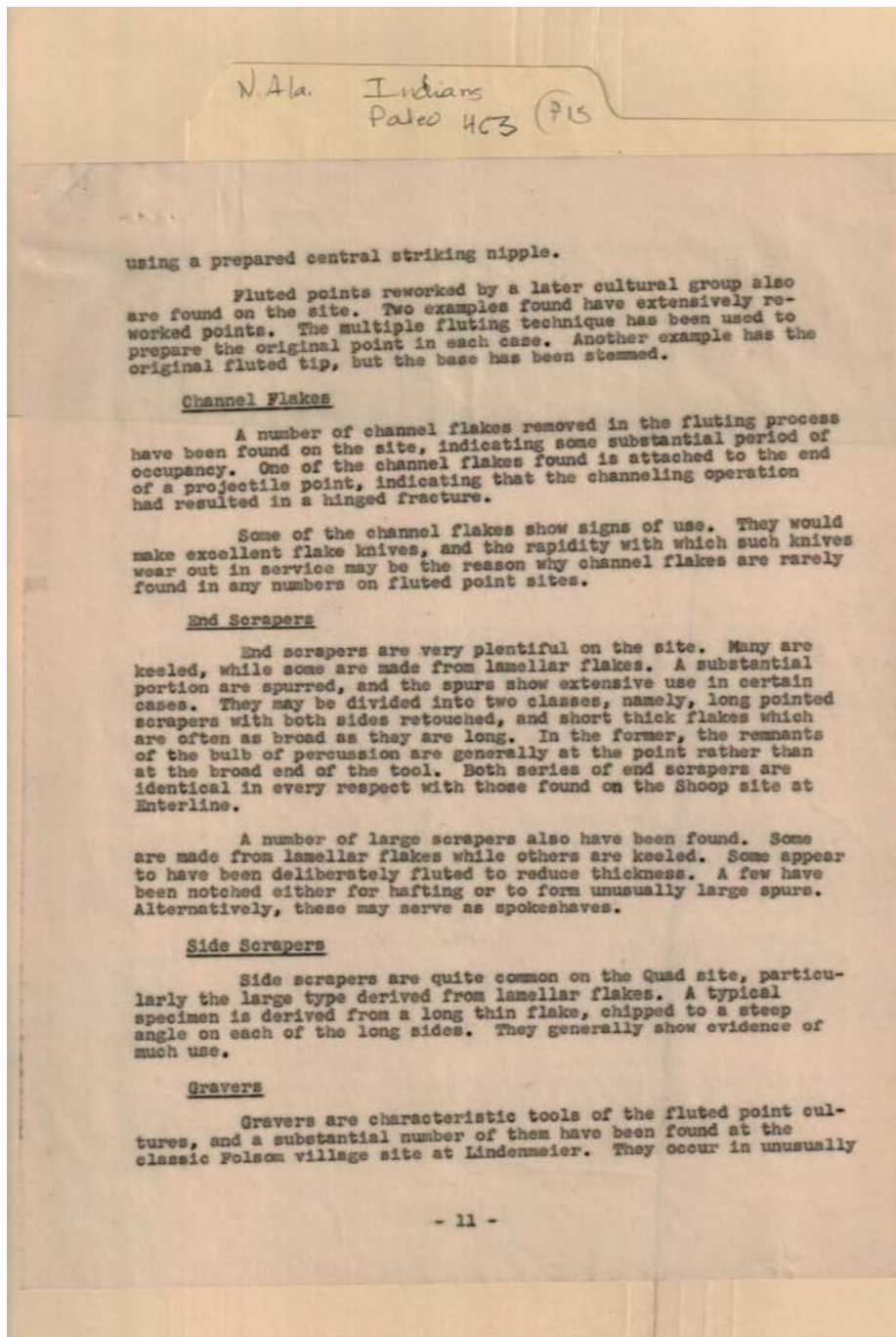
Witthoft,

Types:

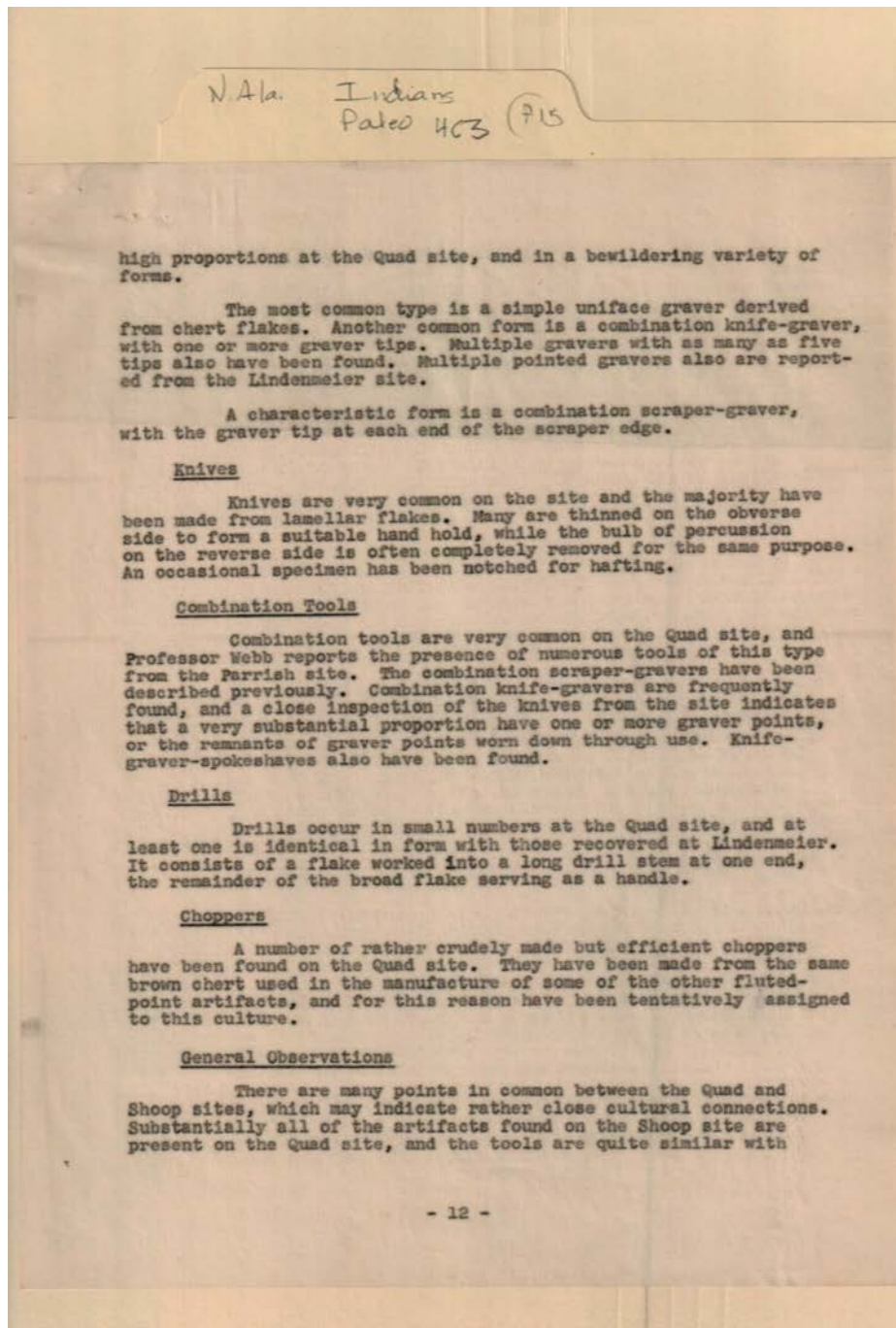
newsletter



Types:
newsletter

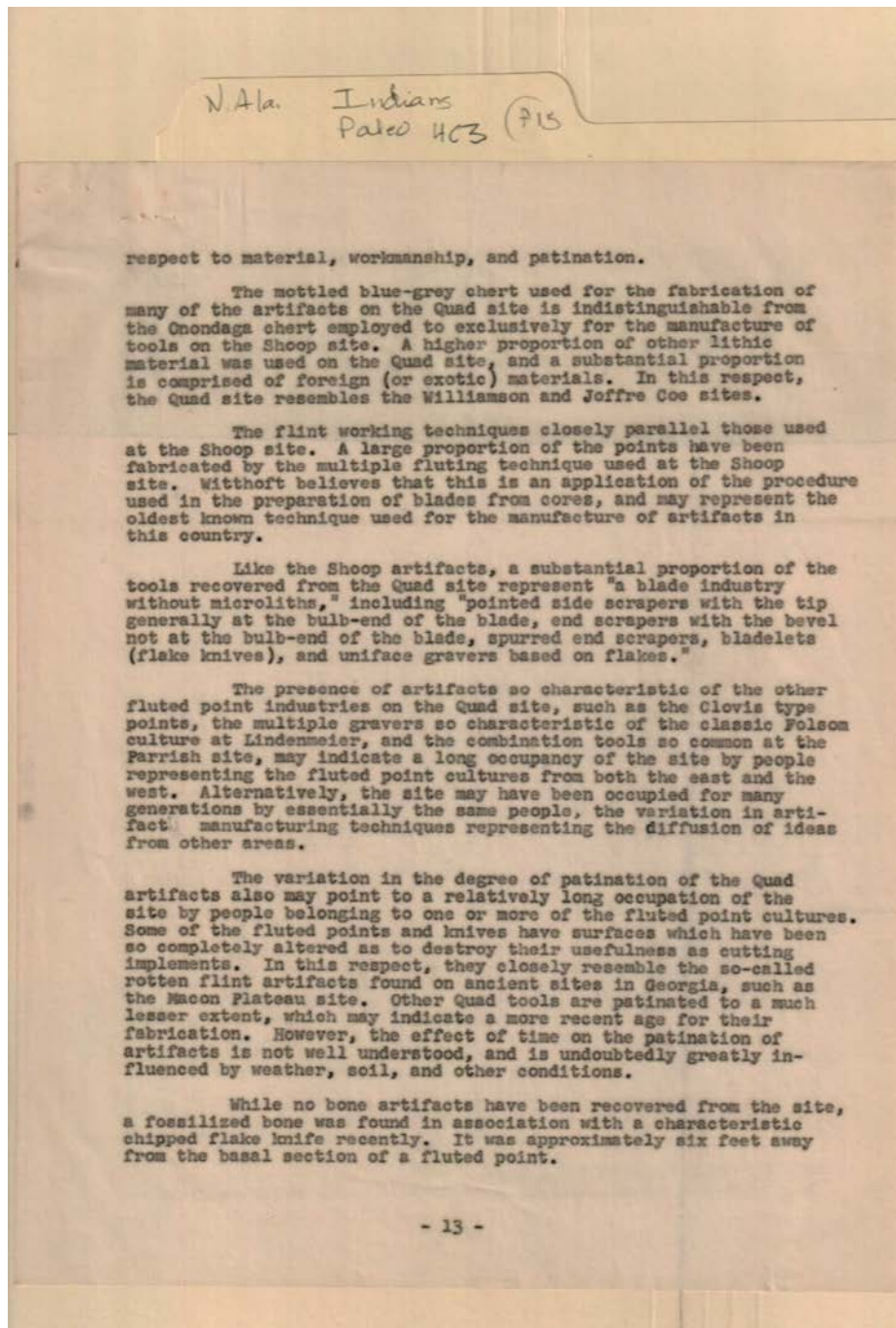


Types:
newsletter



Names:
Webb, Professor

Types:
newsletter



Names:

Coe, Joffre

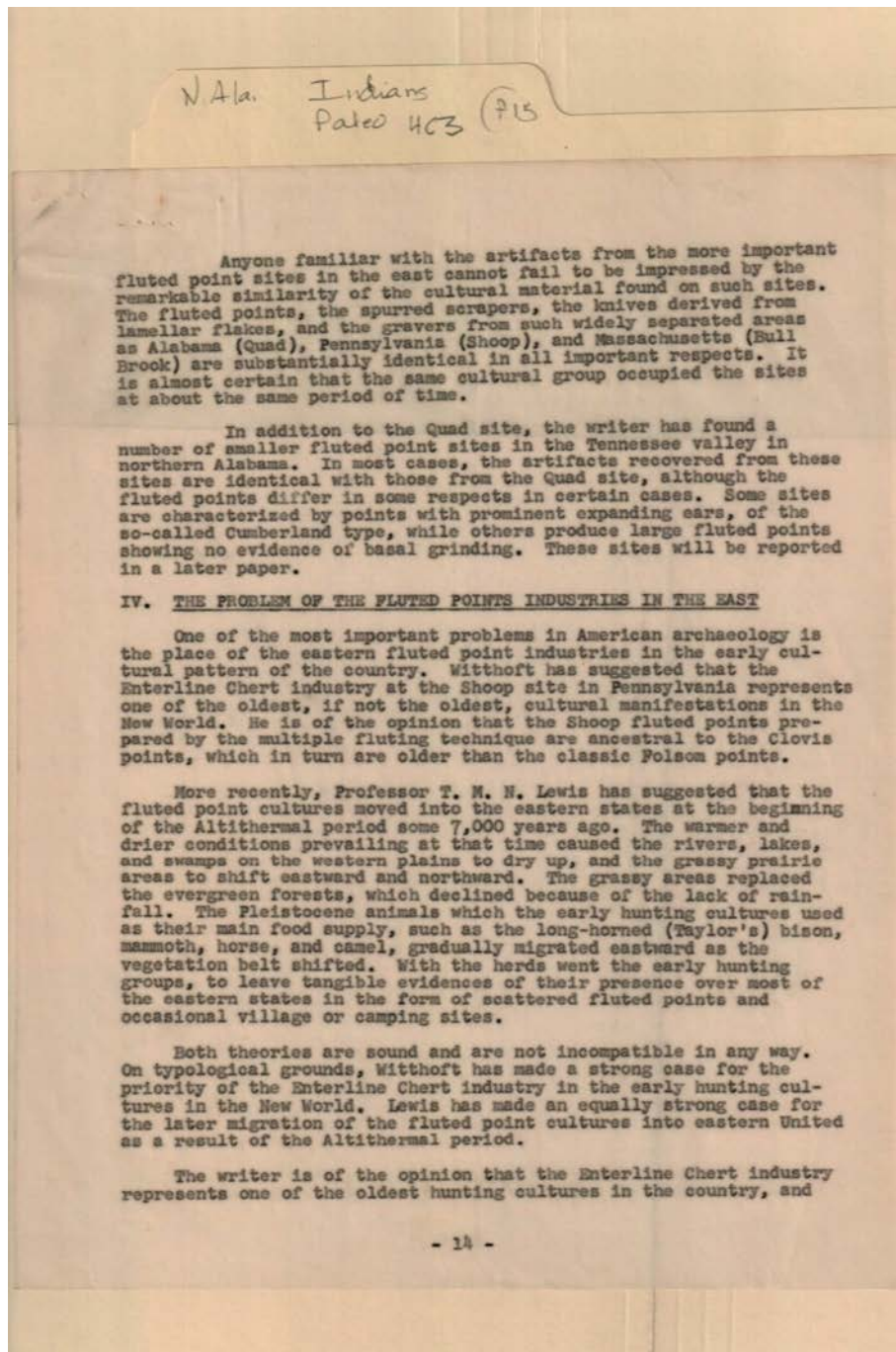
Shoop,

Williamson,

Witthoft,

Types:

newsletter



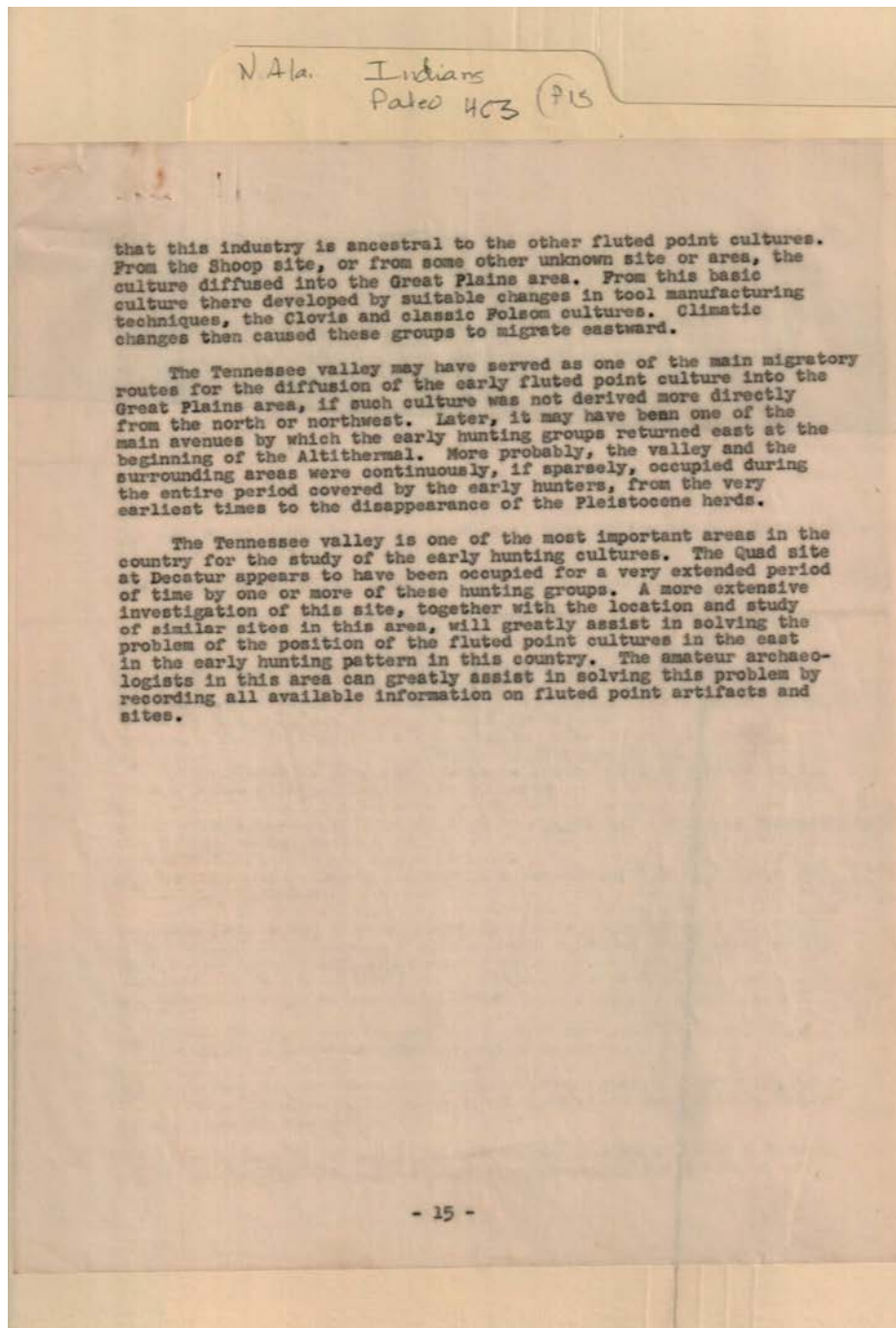
Names:

Lewis, T. M. N.

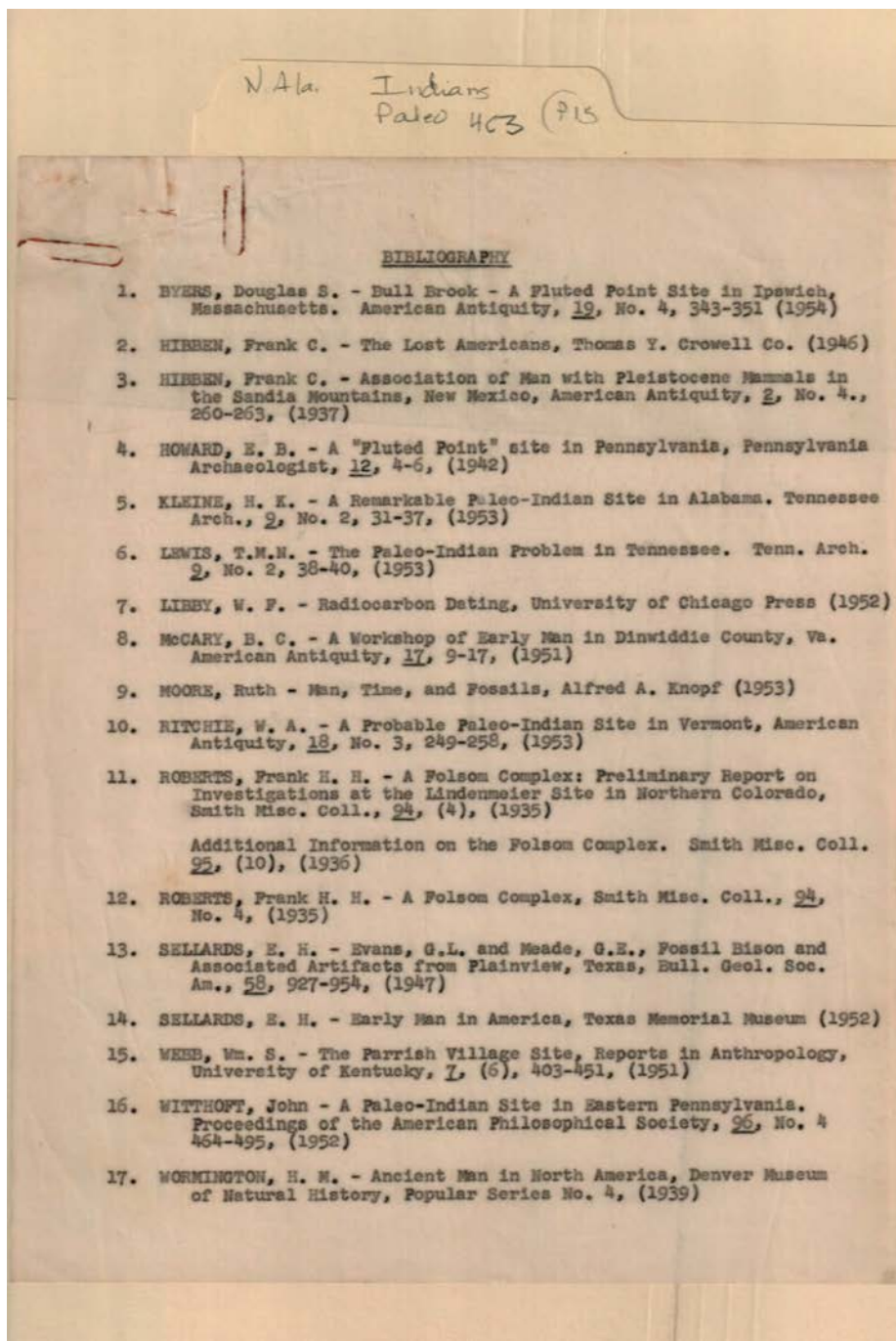
Witthoft,

Types:

newsletter



Types:
newsletter



Names:

Byers, Douglas S.
Hibben, Frank C.
Howard, E. B.
Kleine, H. K.

Knopf, Alfred A.
Lewis, T. M. N.
Libby, W. F.
McCary, B. C.

Moore, Ruth
Ritchie, W. A.
Roberts, Frank H. H.
Sellards, E. H.

Webb, William S.
Witthoft, John
Wormington, H. M.

Types:

newsletter

Frances Cabaniss Roberts Collection: Series 4, Subseries C, Box 3, Folder 15
North Alabama Paleo Indians Article in "Tennessee Archaeologist," by Mahan, E.C., 1954 - Miscellaneous
Alabama

[Contents](#) [Index](#) [About](#)

Table of Contents

[Image 1](#) (r04c03-15-000-0259)
[Image 2](#) (r04c03-15-000-0260)
[Image 3](#) (r04c03-15-000-0261)
[Image 4](#) (r04c03-15-000-0262)
[Image 5](#) (r04c03-15-000-0263)
[Image 6](#) (r04c03-15-000-0264)
[Image 7](#) (r04c03-15-000-0265)
[Image 8](#) (r04c03-15-000-0266)
[Image 9](#) (r04c03-15-000-0267)
[Image 10](#) (r04c03-15-000-0268)
[Image 11](#) (r04c03-15-000-0269)

[Image 12](#) (r04c03-15-000-0270)
[Image 13](#) (r04c03-15-000-0271)
[Image 14](#) (r04c03-15-000-0272)
[Image 15](#) (r04c03-15-000-0273)
[Image 16](#) (r04c03-15-000-0274)
[Image 17](#) (r04c03-15-000-0275)
[Image 18](#) (r04c03-15-000-0276)
[Image 19](#) (r04c03-15-000-0277)
[Image 20](#) (r04c03-15-000-0278)
[Image 21](#) (r04c03-15-000-0279)
[Image 22](#) (r04c03-15-000-0280)

[Image 23](#) (r04c03-15-000-0281)
[Image 24](#) (r04c03-15-000-0282)
[Image 25](#) (r04c03-15-000-0283)
[Image 26](#) (r04c03-15-000-0284)
[Image 27](#) (r04c03-15-000-0285)
[Image 28](#) (r04c03-15-000-0286)
[Image 29](#) (r04c03-15-000-0287)
[Image 30](#) (r04c03-15-000-0288)
[Image 31](#) (r04c03-15-000-0289)
[Image 32](#) (r04c03-15-000-0290)
[Image 33](#) (r04c03-15-000-0291)

[Image 34](#) (r04c03-15-000-0292)
[Image 35](#) (r04c03-15-000-0293)
[Image 36](#) (r04c03-15-000-0294)
[Image 37](#) (r04c03-15-000-0295)
[Image 38](#) (r04c03-15-000-0296)
[Image 39](#) (r04c03-15-000-0297)
[Table of Contents](#)
[Name & Place Index](#)
[About the Collection](#)

Frances Cabaniss Roberts Collection: Series 4, Subseries C, Box 3, Folder 15
North Alabama Paleo Indians Article in "Tennessee Archaeologist," by Mahan, E.C., 1954 - Miscellaneous
Alabama

[Contents](#) [Index](#) [About](#)

Name & Place Index

Akens, Morris [29](#)
Ancient Man in Tennessee Valley [24](#)
Anderson, [28](#)
Artifacts [5](#), [6](#), [7](#), [8](#), [9](#), [11](#), [12](#), [13](#), [14](#), [15](#), [16](#), [17](#), [19](#)
Barbour, [28](#)
Black, [24](#)
Brosemer, C. V. [3](#), [4](#), [6](#), [8](#), [12](#), [14](#), [18](#), [20](#), [21](#)
Burwell, E. D. [3](#), [4](#), [6](#), [8](#), [10](#)
Byers, Douglas S. [39](#)
Coe, Joffre [30](#), [32](#), [36](#)
Coffin, A. L. [25](#)
Coffin, C. C., Judge [25](#)
Cornell, Tom W. (Scoutmaster) [3](#), [6](#), [8](#), [10](#)
Dart, [24](#)
Davis, Kenneth [27](#)
de Perthes, Jacques [24](#)
Doerschuk, M. H. [30](#)
Dubois, [24](#)
Early Flint Artifacts from Alabama Sites [2](#)
Eldridge, W. C. [31](#)
Evans, Glen L. [27](#)
Figgins, J. D., Dr. [25](#)
Folsom Man [25](#)
Frere, John [24](#)
Gordon, George [29](#)
Griffin, James B. [22](#)
Hibben, Dr. [27](#)
Hibben, Frank C. [39](#)
Howard, E. B. [39](#)
Kelly, J. O. [3](#), [4](#), [6](#), [8](#), [10](#)
Kelly, [2](#)
Kleine, H. K. [39](#)
Kleine, Harold H. [31](#)
Kleine, Harold [14](#)
Kneberg, Madeline [22](#)
Knopf, Alfred A. [39](#)
Lewis, T. M. N. [22](#), [23](#), [37](#), [39](#)
Libby, W. F. [39](#)
Libby, Willard F., Dr. [29](#)
Lindenmeier, [25](#)
Madison County Sites [2](#)
Mahan, E. C. [2](#), [20](#), [21](#)
McCary, B. C. [39](#)
McJunkin, George [25](#)
Meade, Grayson E. [27](#)
Moore, Ruth [39](#)
Ritchie, W. A. [39](#)
Roberts, Frank H. H. [39](#)
Schultz, [28](#)
Sellards, Dr. [26](#)
Sellards, E. H. [22](#), [39](#)
Shoop, H. Dean [29](#), [30](#)
Shoop, [32](#), [36](#)
Soday, Frank J., Dr. [22](#), [24](#)
Soday, Frank, Dr. [18](#)
Taylor, [25](#)
Tennessee Archaeological Society [1](#)
Tennessee Archaeologist [1](#)
Vaccaro, Joseph [31](#)
Webb, Professor [35](#)
Webb, W. S., Professor [31](#)
Webb, William S. [39](#)
Webb, [32](#)
Williamson, [32](#), [36](#)
Witthoft, John [29](#), [39](#)
Witthoft, [30](#), [32](#), [36](#), [37](#)
Wormington, H. M. [22](#), [39](#)

Frances Cabaniss Roberts Collection

Preferred Citation: Frances Cabaniss Roberts Collection, Archives and Special Collections, M. Louis Salmon Library, University of Alabama in Huntsville, Huntsville, AL.

Collection Scope and Content: The Collection of 114 Linear ft. includes a total of 156 Archival Boxes. The Frances Cabaniss Roberts collection covers the historical records of the Cabaniss Roberts family. This collection contains extensive correspondence records of the Cabaniss Roberts family circa 1830 to 1930.

Archives/Special Collections Access Restrictions: None

Conditions Governing Use: This material may be protected under U. S. Copyright Law (Title 17, U.S. Code) which governs the making of photocopies or reproductions of copyrighted materials. You may use the digitized material for private study, scholarship, or research. Though the University of Alabama in Huntsville Archives and Special Collections has physical ownership of the material in its collections, in some cases we may not own the copyright to the material. It is the patron's obligation to determine and satisfy copyright restrictions when publishing or otherwise distributing materials found in our collections.

Provenance: Gift of Johanna Shields on October 28, 2006.



THE UNIVERSITY OF
ALABAMA IN HUNTSVILLE

**The UAH Archives and Special Collections
M. Louis Salmon Library**