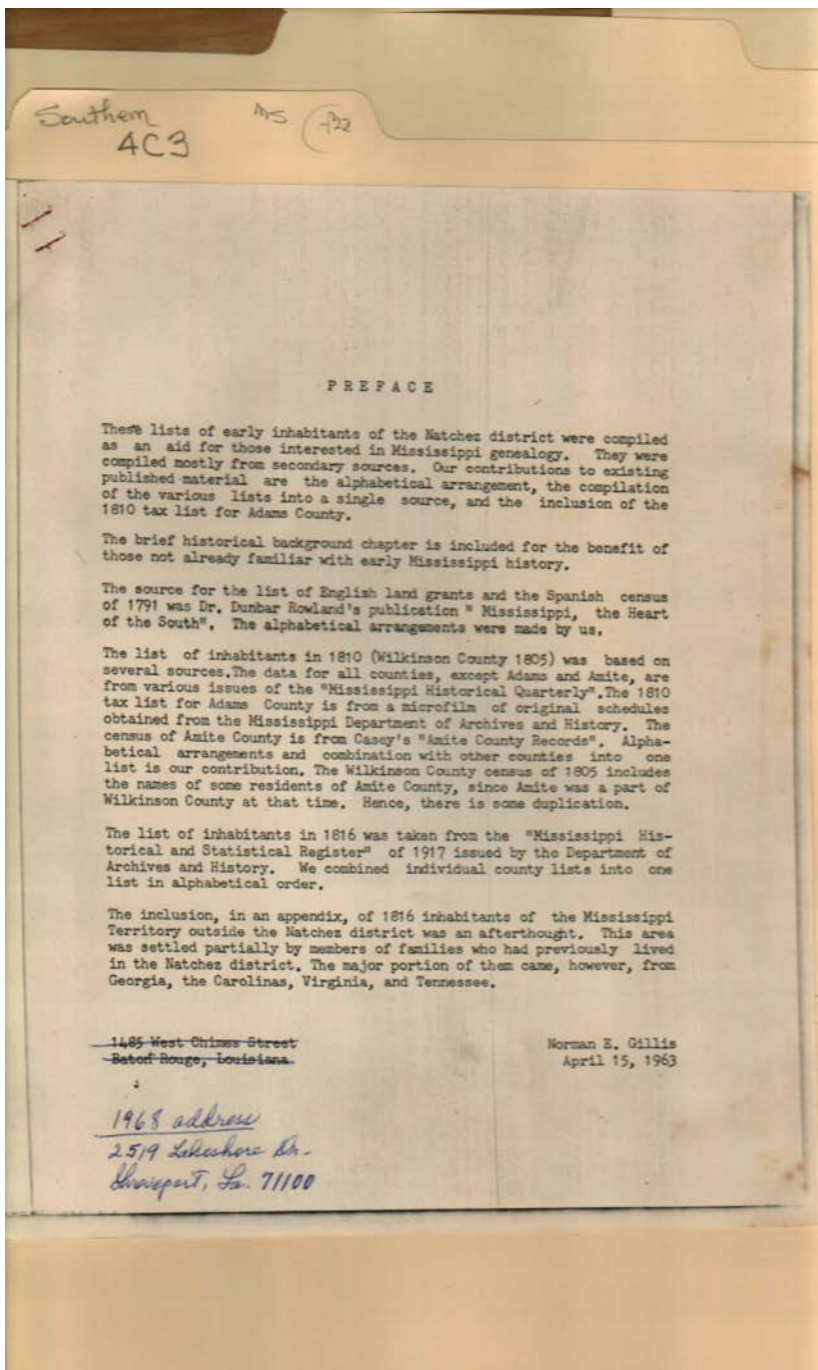


Frances Cabaniss Roberts Collection: Series 4, Subseries C, Box 3, Folder 22

Booklet on Natchez District, Mississippi, 1963 - Southern States

Image 1 r04c03-22-000-0001 [Contents](#) [Index](#) [About](#)



**Names:**

Gillis, Norman E.

Mississippi  
Genealogy

Mississippi History  
Rowland, Dunbar, Dr.

**Places:**

Shreveport, LA

**Types:**

booklet

**Dates:**

Apr 15, 1963

Frances Cabaniss Roberts Collection: Series 4, Subseries C, Box 3, Folder 22

Booklet on Natchez District, Mississippi, 1963 - Southern States

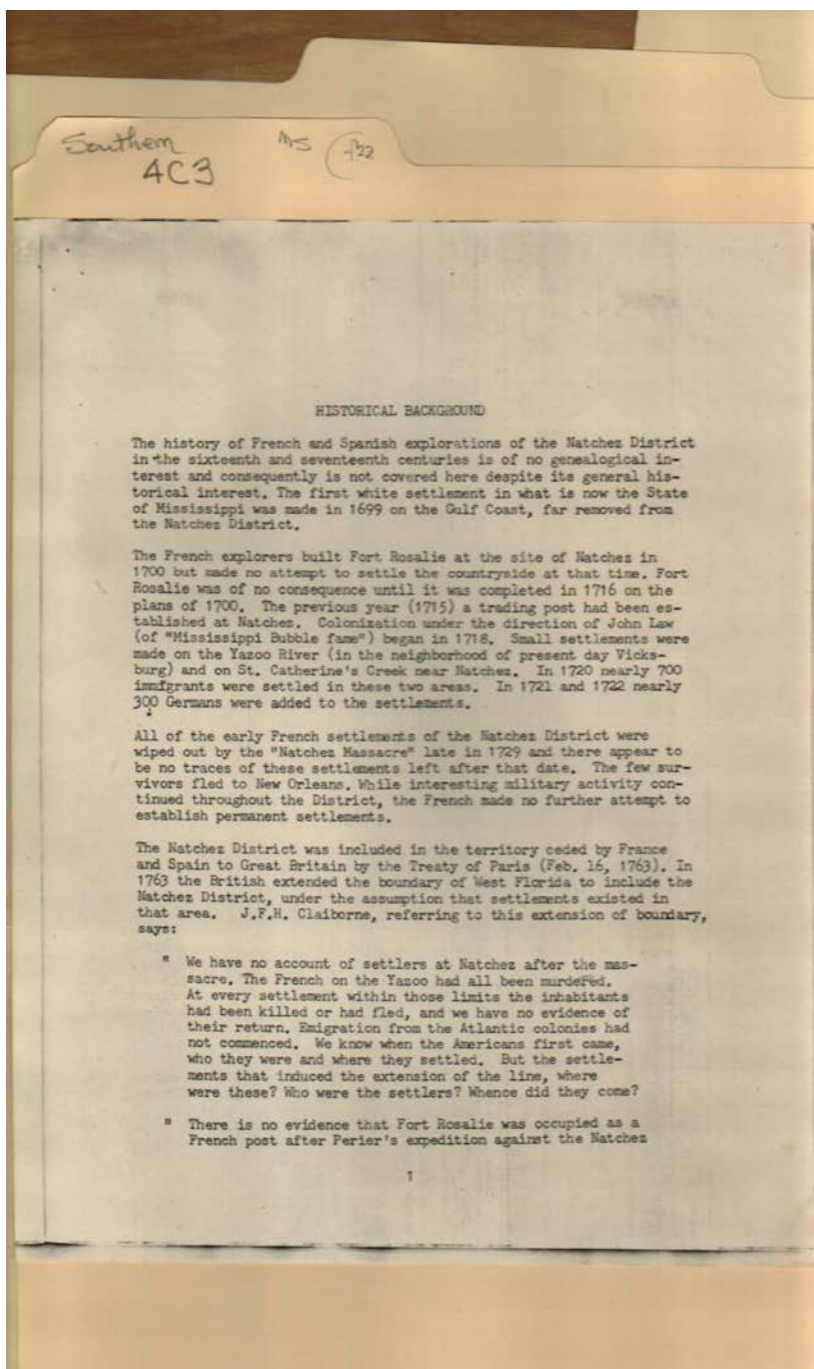
Image 2 r04c03-22-000-0002 [Contents](#) [Index](#) [About](#)

Southern  
4C3 MS (722)

TABLE OF CONTENTS

1. Historical Background .....	page	1
2. English Land Grants .....	page	6
3. Spanish Census - 1792 .....	page	13
4. Inhabitants - 1810 .....	page	27
5. Inhabitants - 1816 .....	page	80
6. Appendix - Mississippi Territory other than Natchez District - 1816 .....	page	114

Types:  
booklet



**Names:**

Claiborne, J. F. H.

Historical  
Background

Law, John

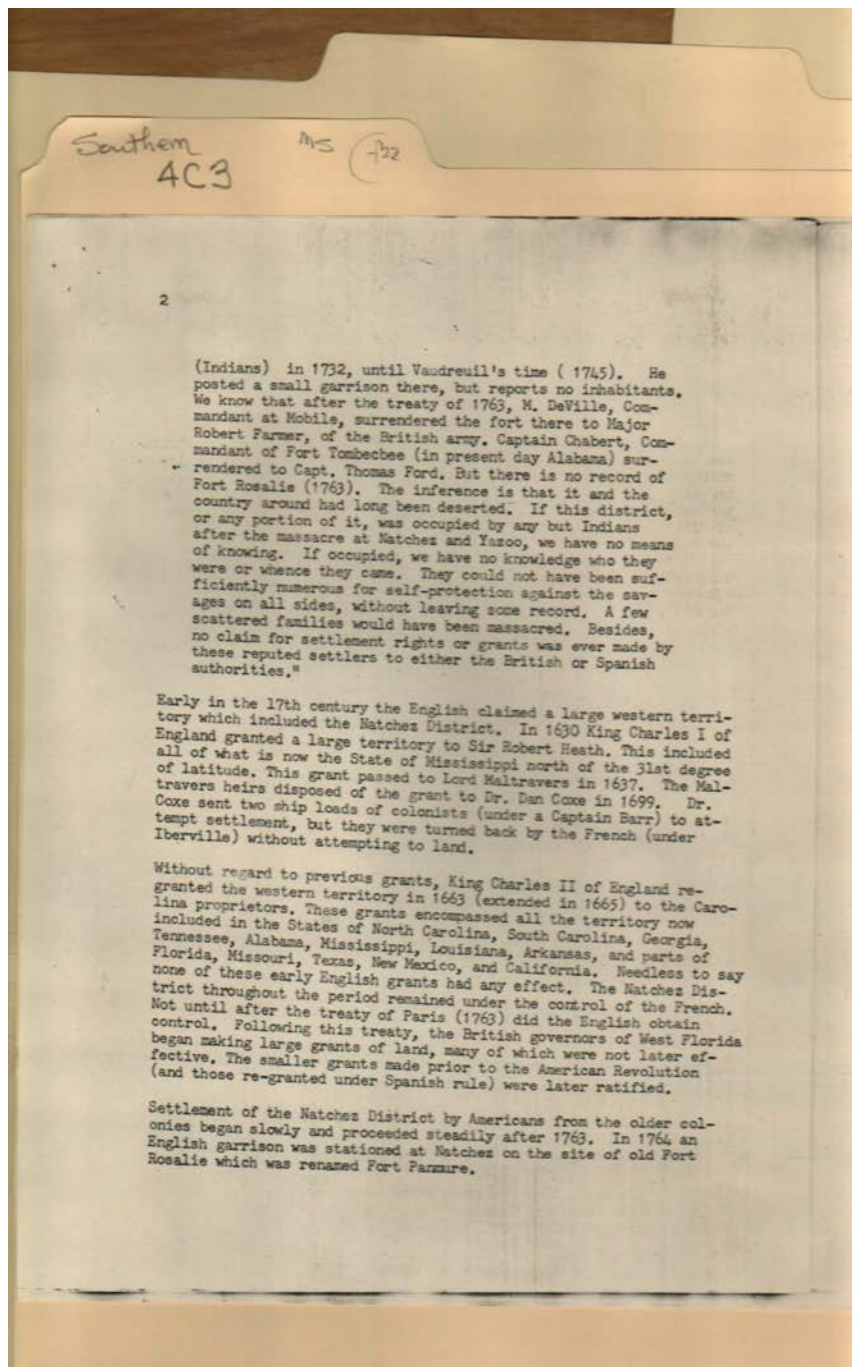
**Types:**

booklet

Frances Cabaniss Roberts Collection: Series 4, Subseries C, Box 3, Folder 22

Booklet on Natchez District, Mississippi, 1963 - Southern States

Image 4 r04c03-22-000-0004 [Contents](#) [Index](#) [About](#)



**Names:**

Barr, Captain  
Chabert, Captain  
Coxe, Dan, Dr.  
DeVille, M.

Farmer, Robert,  
Major  
Ford, Thomas,  
Captain

Heath, Robert, Sir  
Iberville,  
King Charles I  
King Charles II

Maltravers, Lord  
Vandreuil,

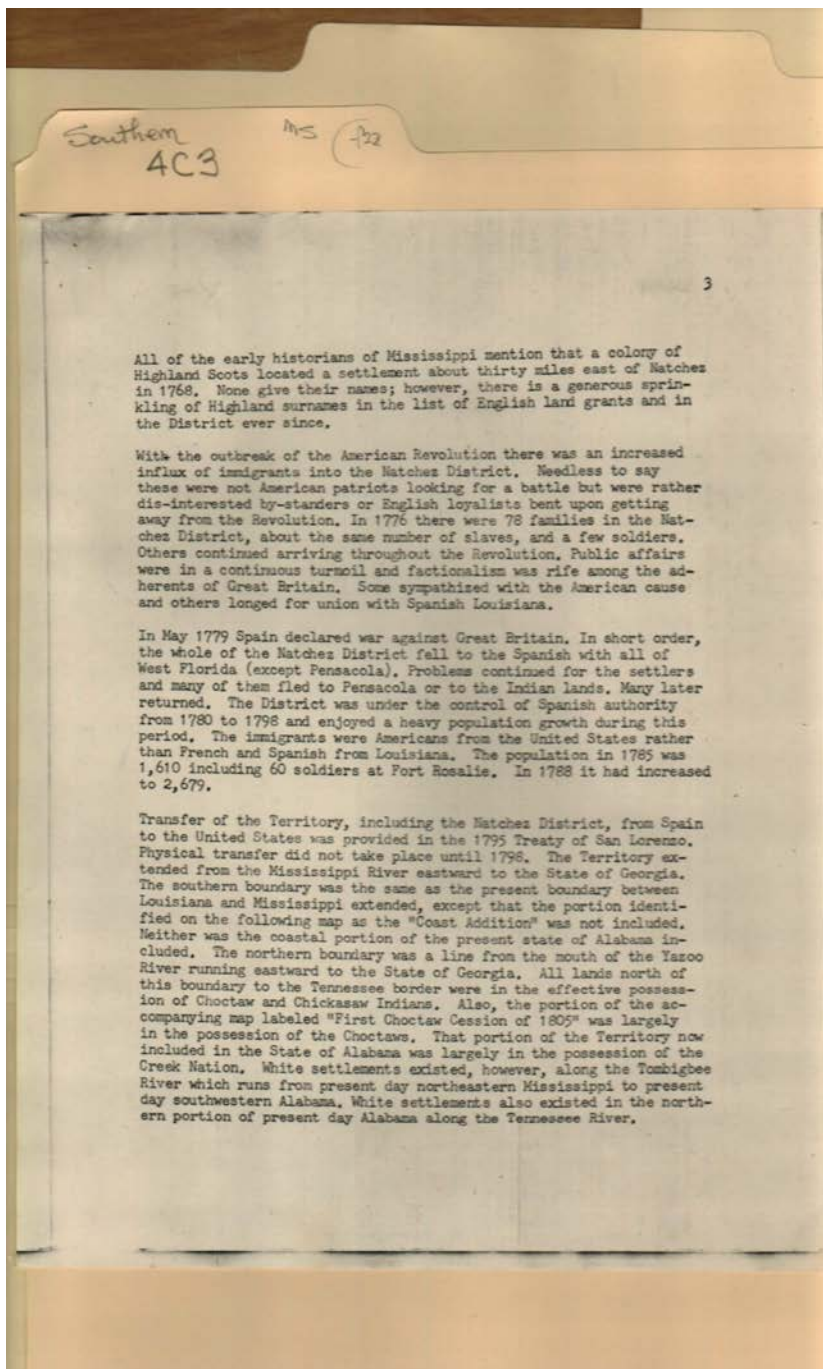
**Types:**

booklet

Frances Cabaniss Roberts Collection: Series 4, Subseries C, Box 3, Folder 22

Booklet on Natchez District, Mississippi, 1963 - Southern States

Image 5 r04c03-22-000-0005 [Contents](#) [Index](#) [About](#)



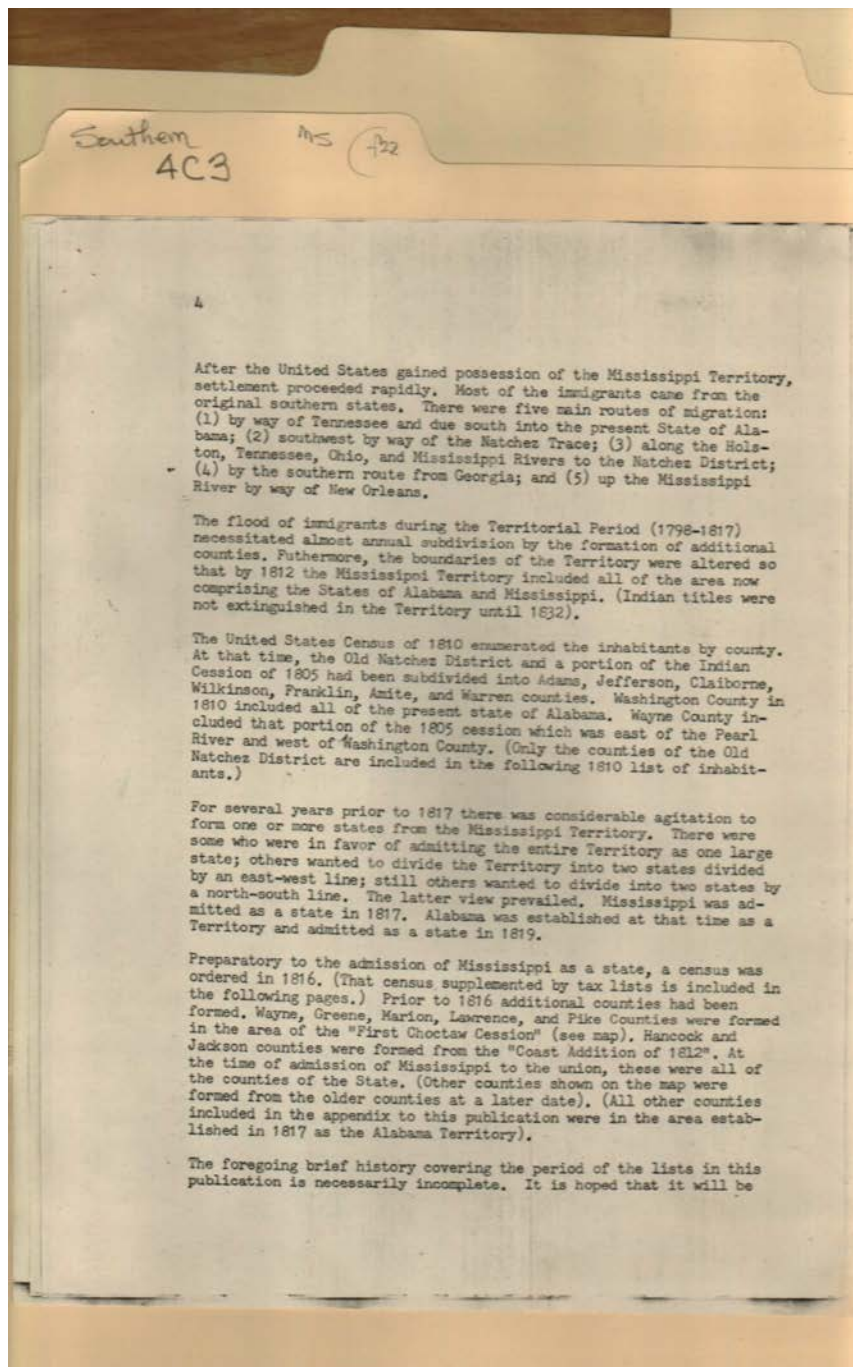
**Names:**

Choctaw Cession of  
1805

Treaty of San  
Lorenzo

**Types:**

booklet

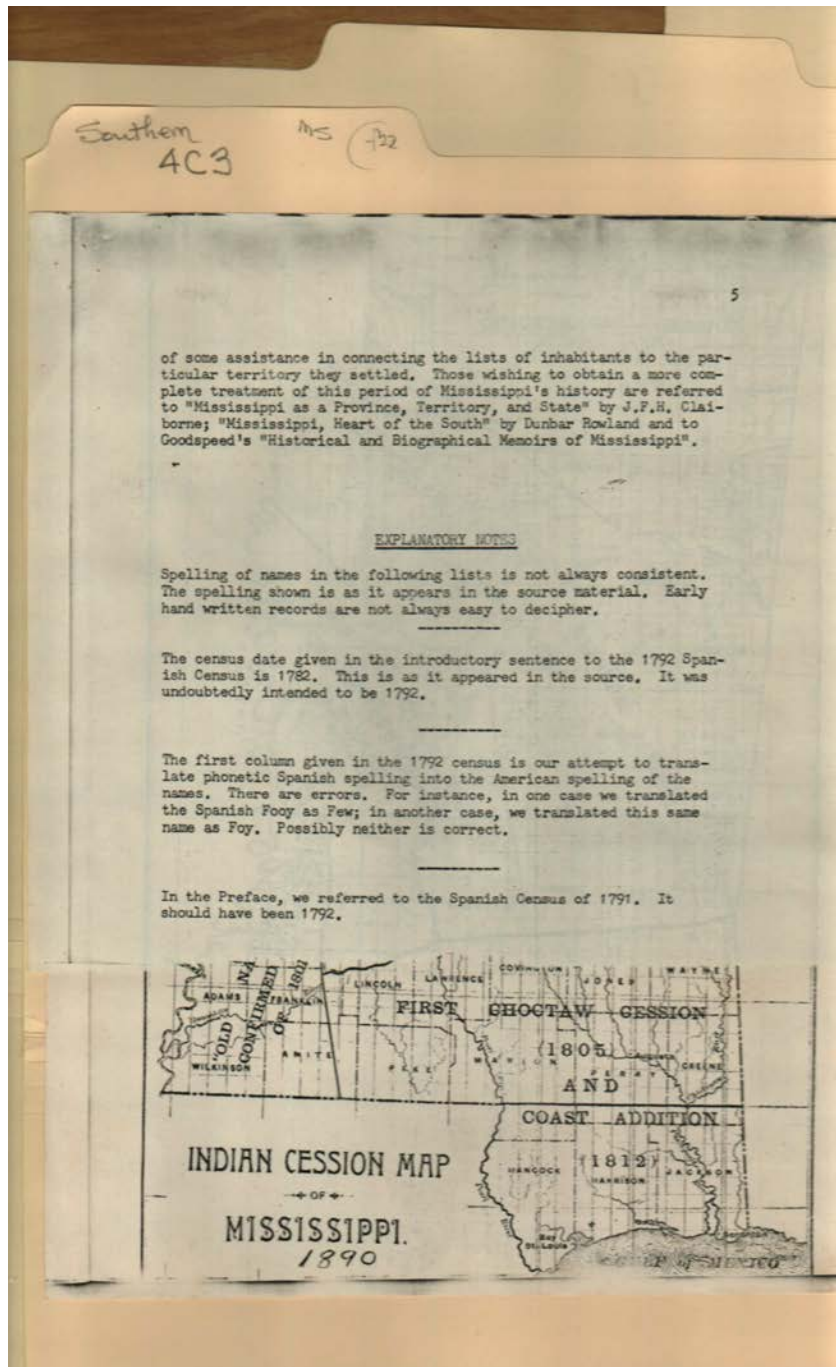


**Names:**

Routes of Migration

**Types:**

booklet



**Names:**

Claiborne, J. F. H.

Indian Cession Map  
of Mississippi

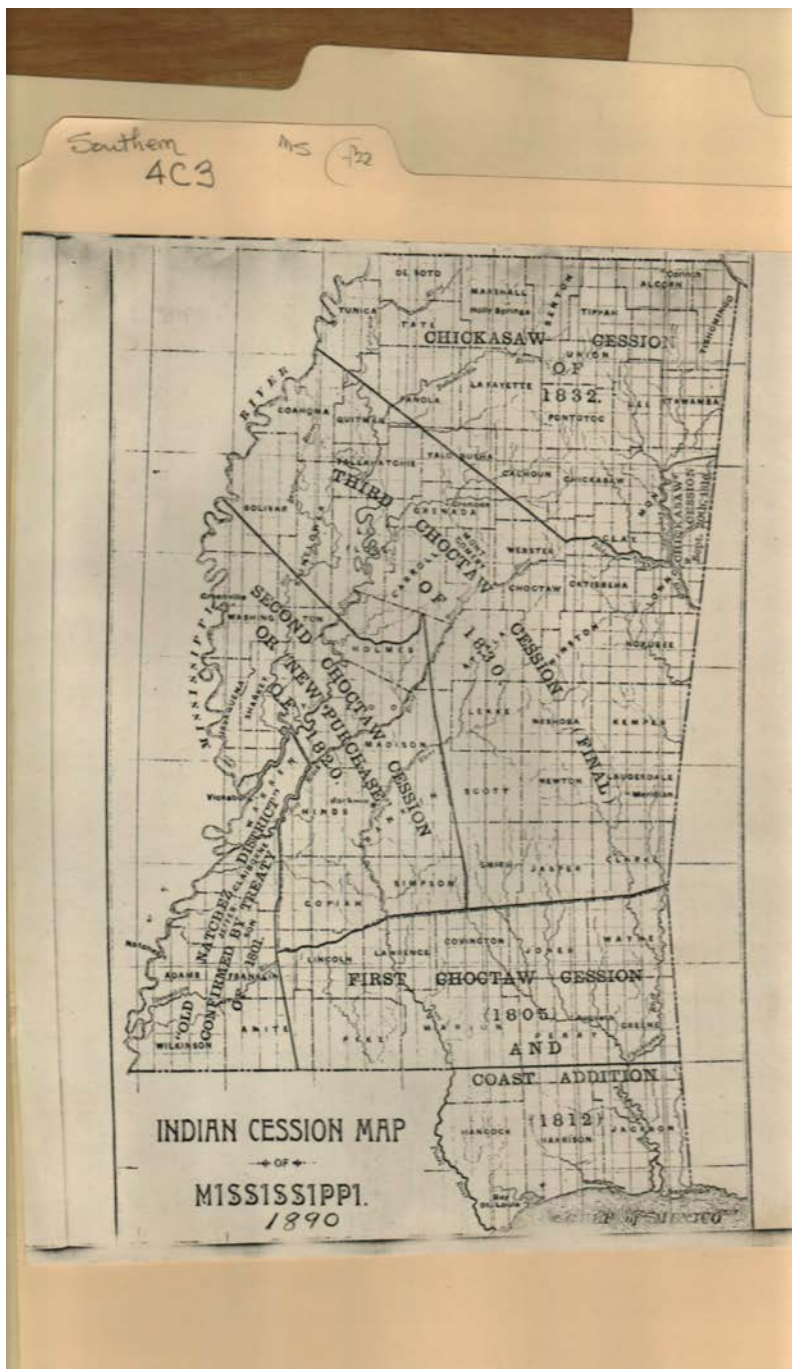
**Types:**

booklet

map

**Dates:**

1890



**Names:**

Indian Cession Map  
of Mississippi

**Types:**

map

**Dates:**

1890



**Frances Cabaniss Roberts Collection: Series 4, Subseries C, Box 3, Folder 22**  
**Booklet on Natchez District, Mississippi, 1963 - Southern States**

[Contents](#)   [Index](#)   [About](#)

**Table of Contents**

[Image 1](#) (r04c03-22-000-0001)

[Image 2](#) (r04c03-22-000-0002)

[Image 3](#) (r04c03-22-000-0003)

[Image 4](#) (r04c03-22-000-0004)

[Image 5](#) (r04c03-22-000-0005)

[Image 6](#) (r04c03-22-000-0006)

[Image 7](#) (r04c03-22-000-0007)

[Image 8](#) (r04c03-22-000-0008)

[Table of Contents](#)

[Name & Place Index](#)

[About the Collection](#)

**Frances Cabaniss Roberts Collection: Series 4, Subseries C, Box 3, Folder 22**

**Booklet on Natchez District, Mississippi, 1963 - Southern States**

[Contents](#) [Index](#) [About](#)

**Name & Place Index**

Barr, Captain <a href="#">4</a>	Indian Cession Map of Mississippi <a href="#">7, 8</a>
Chabert, Captain <a href="#">4</a>	King Charles II <a href="#">4</a>
Choctaw Cession of 1805 <a href="#">5</a>	King Charles I <a href="#">4</a>
Claiborne, J. F. H. <a href="#">3, 7</a>	Law, John <a href="#">3</a>
Coxe, Dan, Dr. <a href="#">4</a>	Maltravers, Lord <a href="#">4</a>
DeVille, M. <a href="#">4</a>	Mississippi Genealogy <a href="#">1</a>
Farmer, Robert, Major <a href="#">4</a>	Mississippi History <a href="#">1</a>
Ford, Thomas, Captain <a href="#">4</a>	Routes of Migration <a href="#">6</a>
Gillis, Norman E. <a href="#">1</a>	Rowland, Dunbar, Dr. <a href="#">1</a>
Heath, Robert, Sir <a href="#">4</a>	Shreveport, LA <a href="#">1</a>
Historical Background <a href="#">3</a>	Treaty of San Lorenzo <a href="#">5</a>
Iberville, <a href="#">4</a>	Vaudreuil, <a href="#">4</a>

# Frances Cabaniss Roberts Collection

**Preferred Citation:** Frances Cabaniss Roberts Collection, Archives and Special Collections, M. Louis Salmon Library, University of Alabama in Huntsville, Huntsville, AL.

**Collection Scope and Content:** The Collection of 114 Linear ft. includes a total of 156 Archival Boxes. The Frances Cabaniss Roberts collection covers the historical records of the Cabaniss Roberts family. This collection contains extensive correspondence records of the Cabaniss Roberts family circa 1830 to 1930.

**Archives/Special Collections Access Restrictions:** None

**Conditions Governing Use:** This material may be protected under U. S. Copyright Law (Title 17, U.S. Code) which governs the making of photocopies or reproductions of copyrighted materials. You may use the digitized material for private study, scholarship, or research. Though the University of Alabama in Huntsville Archives and Special Collections has physical ownership of the material in its collections, in some cases we may not own the copyright to the material. It is the patron's obligation to determine and satisfy copyright restrictions when publishing or otherwise distributing materials found in our collections.

**Provenance:** Gift of Johanna Shields on October 28, 2006.



THE UNIVERSITY OF  
ALABAMA IN HUNTSVILLE

**The UAH Archives and Special Collections  
M. Louis Salmon Library**