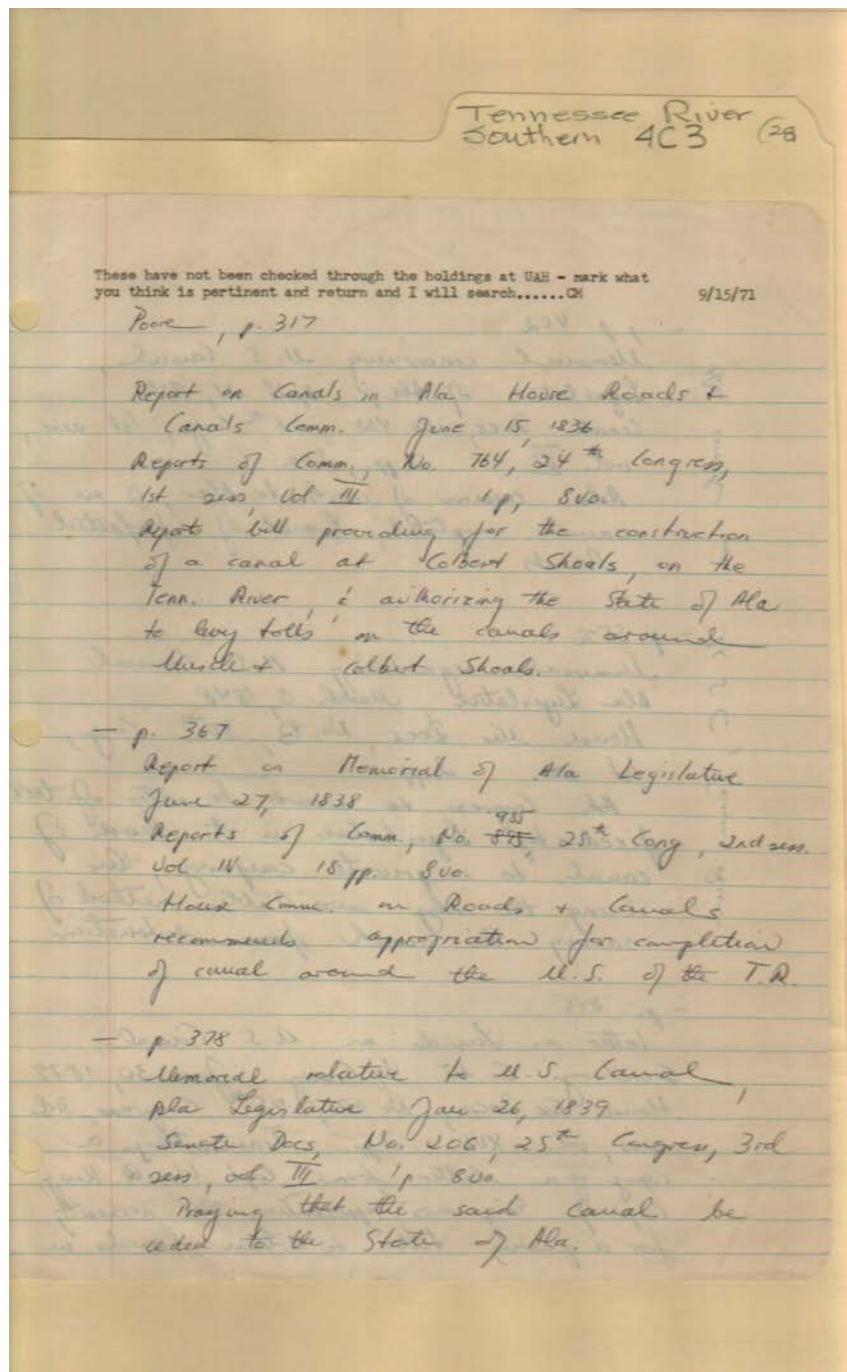


Frances Cabaniss Roberts Collection: Series 4, Subseries C, Box 3, Folder 28

Tennessee River Notes and Records - Southern States

Image 1 r04c03-28-000-0129 [Contents](#) [Index](#) [About](#)



Names:

Poore,

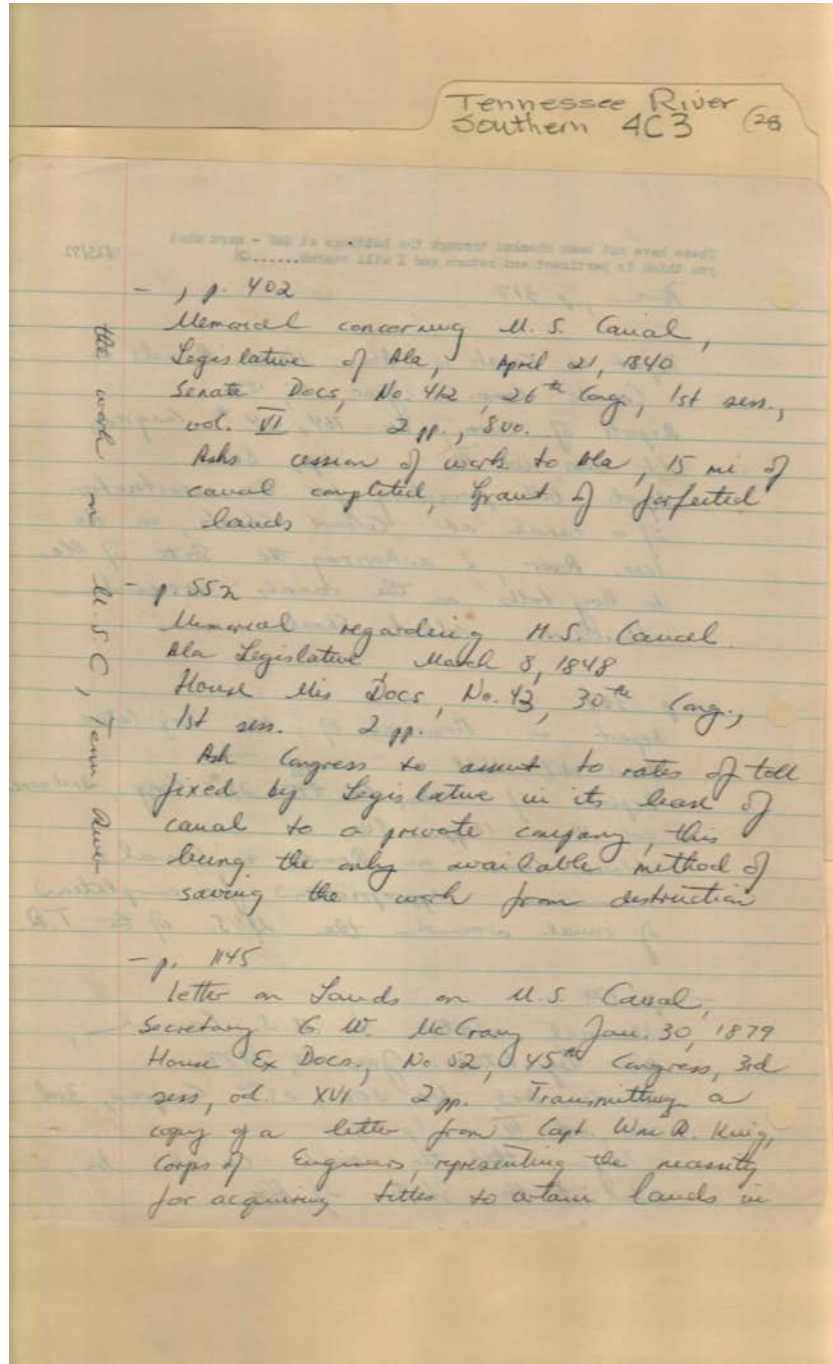
Roads & Canals in
Alabama Report

Types:

notes

Dates:

Sep 15, 1971



Names:

King, William R.
Captain

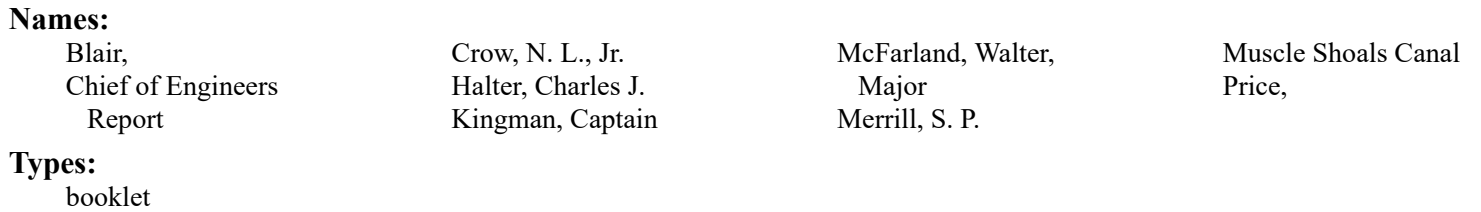
McCravy, G. W.

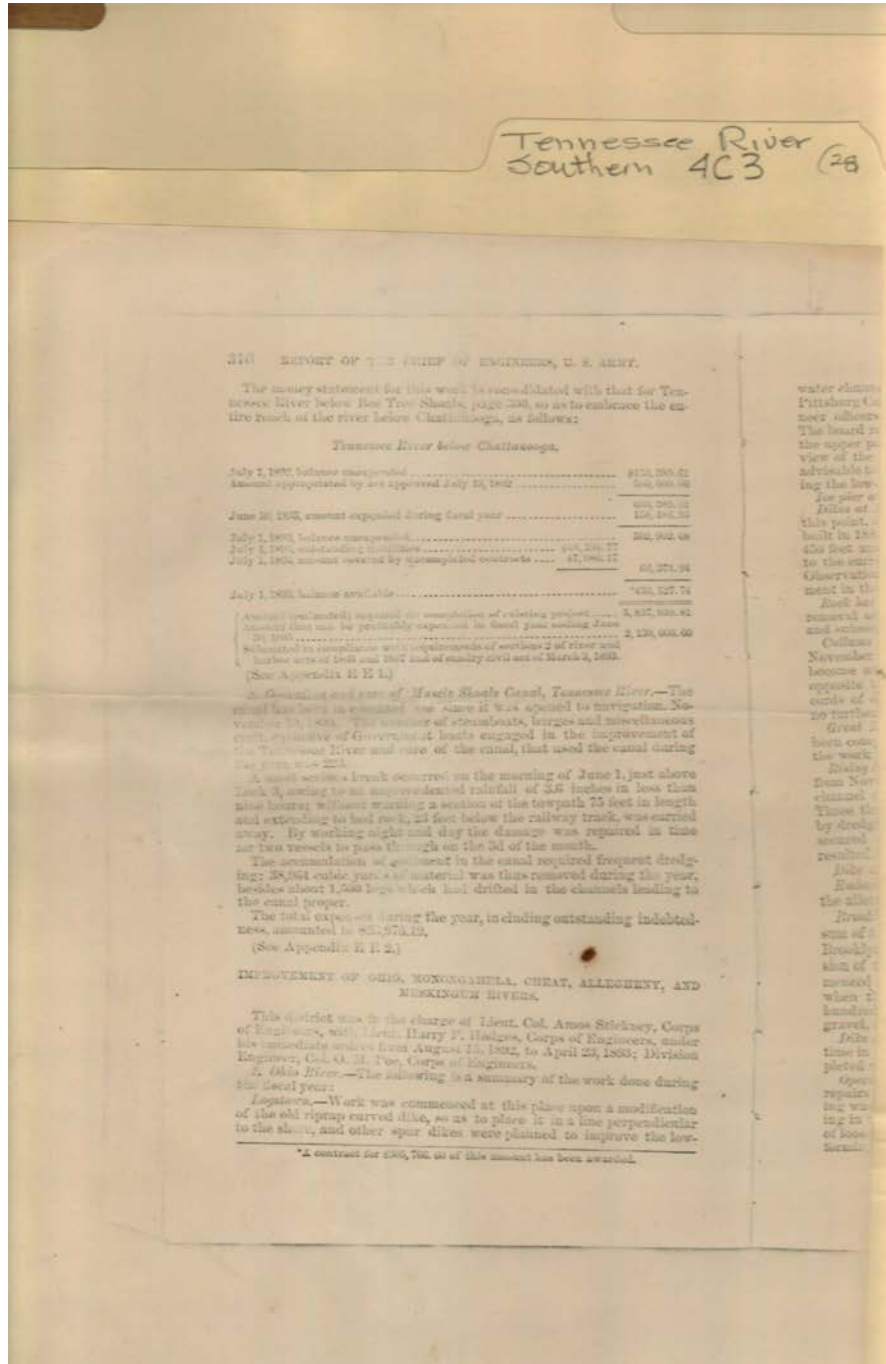
Roads & Canals in
Alabama Report

Types:

notes

Image 3 r04c03-28-000-0132 [Contents](#) [Index](#) [About](#)





Names:

Hodges, Harry F.
Poe, O. M., Colonel

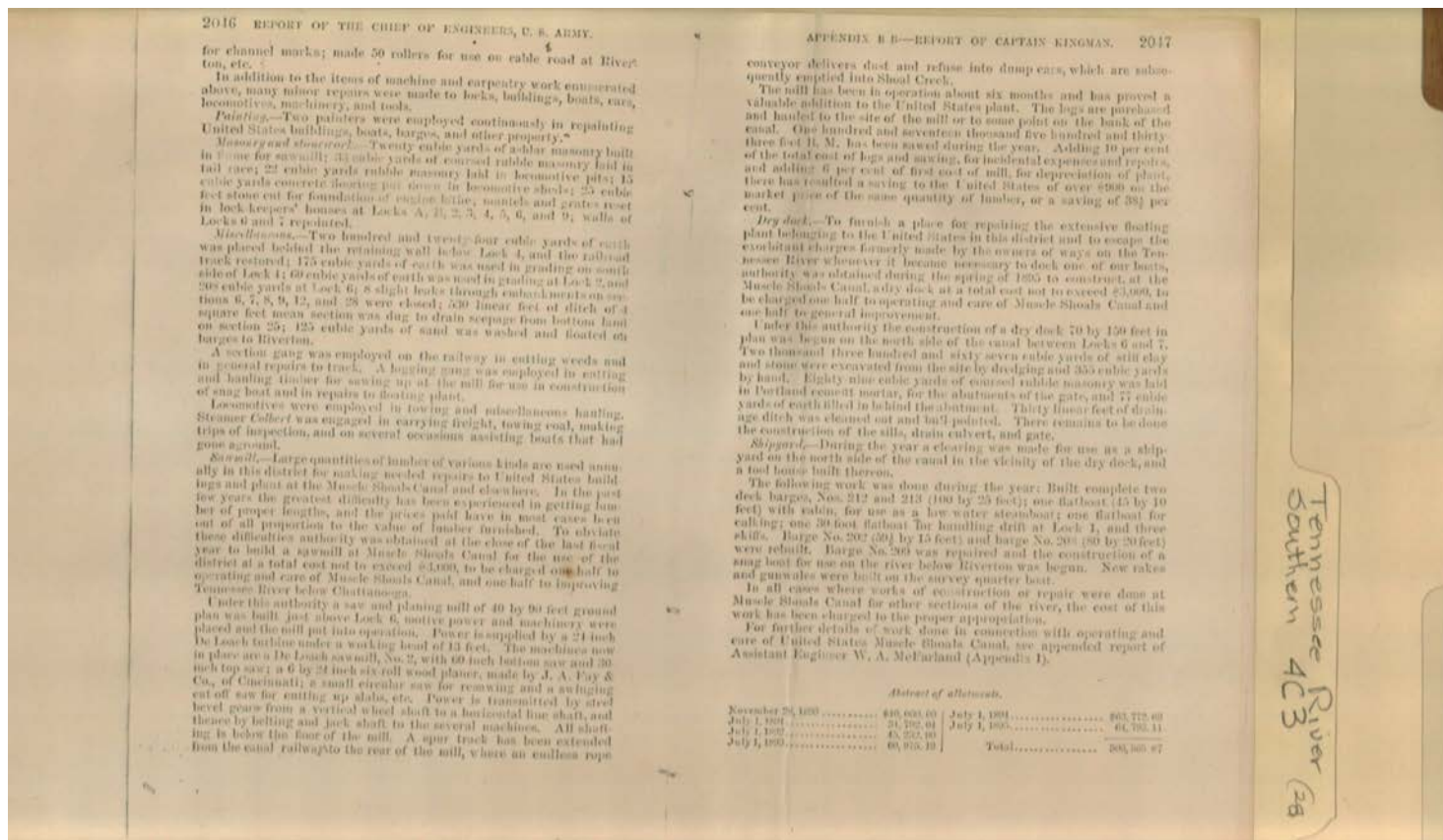
Stickney, Amos, Lt.
Colonel

Tennessee River
below Chattanooga

Report

Types:

booklet



Names:

Fay, J. A. & Co.

McFarland, W. A.

Types:

booklet

Names:
Kingman, Captain

Types:
booklet

APPENDIX B B—REPORT OF CAPTAIN KINGMAN. 2013				
List of steamboats (stern-wheel) plying on the Tennessee River, etc.—Continued.				
BETWEEN FLORENCE, ALA., AND PADUCAH, KY.—Continued.				
Name.	Length.	Breadth.	Depth.	Net tonnage.
Coridon.....	40.5	8.4	4.6	13.39
Amie Barker.....	53	12	5	9.16
Frank Barnett.....	50.6	9.2	2.8	7.61
Clayton H. Webb.....	112.5	24.7	3	68.7
Mary N.....	63	11	3	36.34
Wm. Towle.....	59	10	3.5	63.66
Montezuma.....	49	12	2.5	16.19
Lansdown.....	85	15	8	27.73
Kenton.....	106.5	23	5.3	155.68
Luke Pryor, Jr.....	115.2	28.2	2	174.38
John D. Lewis.....	115.2	28.2	4	208.41
Emma Cooper.....	95	25	2.3	59.10
Penguin.....	80	16.6	2.4	69.68
Battle Green.....	137	29.9	4	169.34
Edgar Cherry.....	132	27.4	5	268.48
Tug Ida.....	82.5	14.8	5	37.73
George W. Perket.....	206	46.5	5	606.16
Spread Eagle.....	251.5	23.8	5.7	576.31
Attentus Lamb.....	140	26	4	176.73
Grace Morris.....	169	29	2.6	74.88
John L. Lewis.....	108	16	2.6	34.35
Fred Nellis.....	95	19	4	37.17
John Barrett.....	124.8	21	4	187.55
Joan.....	145.2	26.6	2.6	233.79
City of Quincy.....	130.7	25.8	6	180.91

B B 2.

OPERATING AND CARE OF MUSCLE SHOALS CANAL, TENNESSEE RIVER.

The Muscle Shoals Canal, which had been in course of construction since 1875, was formally opened to public traffic November 10, 1890.

The canal consists of two sections, known as the Elk River Division and the Muscle Shoals Division, being named thus from the shoals of the same names on the Tennessee River around which the two sections were constructed.

The Elk River Division is 1.5 miles long, not less than 100 feet wide, and has two locks, known as Locks A and B, each 60 by 300 feet, with a total lift of 23 feet.

The Muscle Shoals Division, beginning about 8 miles below Lock B, is 14.5 miles long, from 70 to 100 feet wide, and has been constructed by rebuilding and enlarging the old canal built for the United States by the State of Alabama, 1831-36. This old canal was used for one season, but the obstructions in the river above and below limited navigation to certain stages of the water; hence it was operated for one year only, after which, no funds being appropriated for its maintenance, it was disused and fell into decay.

The lower division of the canal contains nine locks of the same dimensions as those in the upper division, viz, 60 feet wide and 300 feet long, with a total lift of 85 feet.

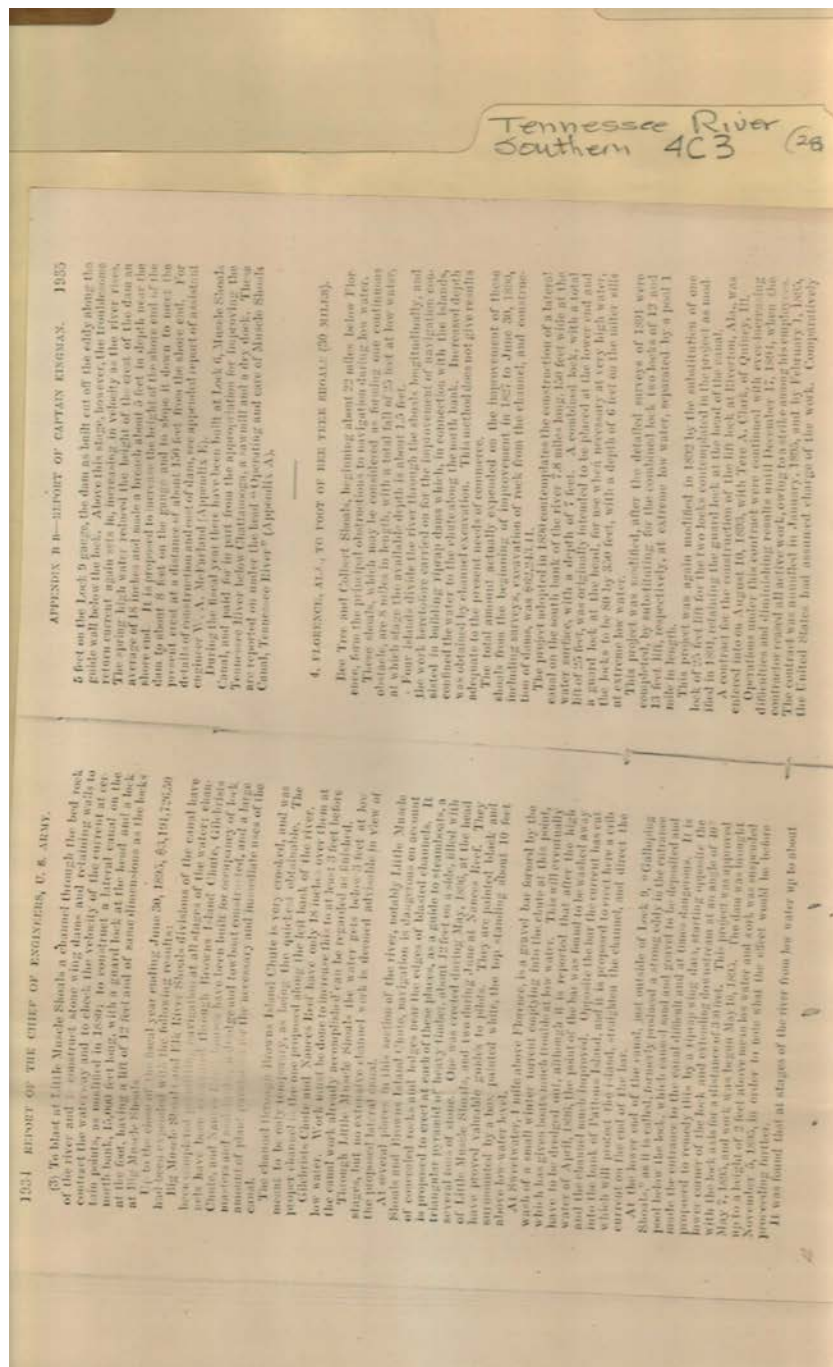
During the past fiscal year the canal was kept in working order and no delay in traffic occurred, except in one instance during the construction of the dry dock abutments, when the steamer *City of Chattanooga* was delayed about three hours.

The locks, buildings, and grounds were cared for and kept in good condition; the entire line of embankment was patrolled daily for the purpose of detecting leaks; no serious washout occurred.

Tennessee River Southern 4C3 28

Names: Kingman, Captain Muscle Shoals Canal Steamboat List
Operating & Care

Types: booklet



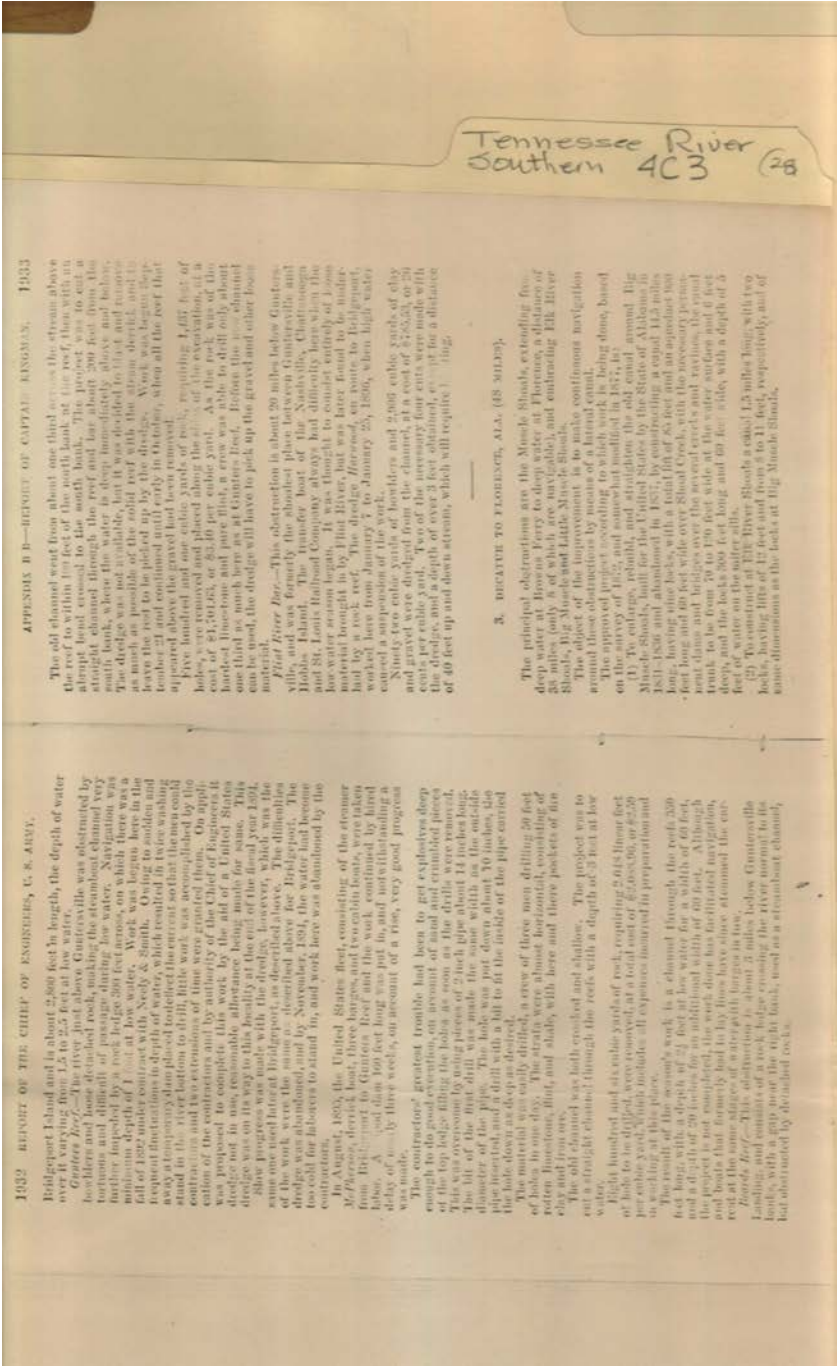
Names:

Clark, Tere A.

McFarland, W. A.

Types:

booklet



Names:
Neely,
Types:
booklet

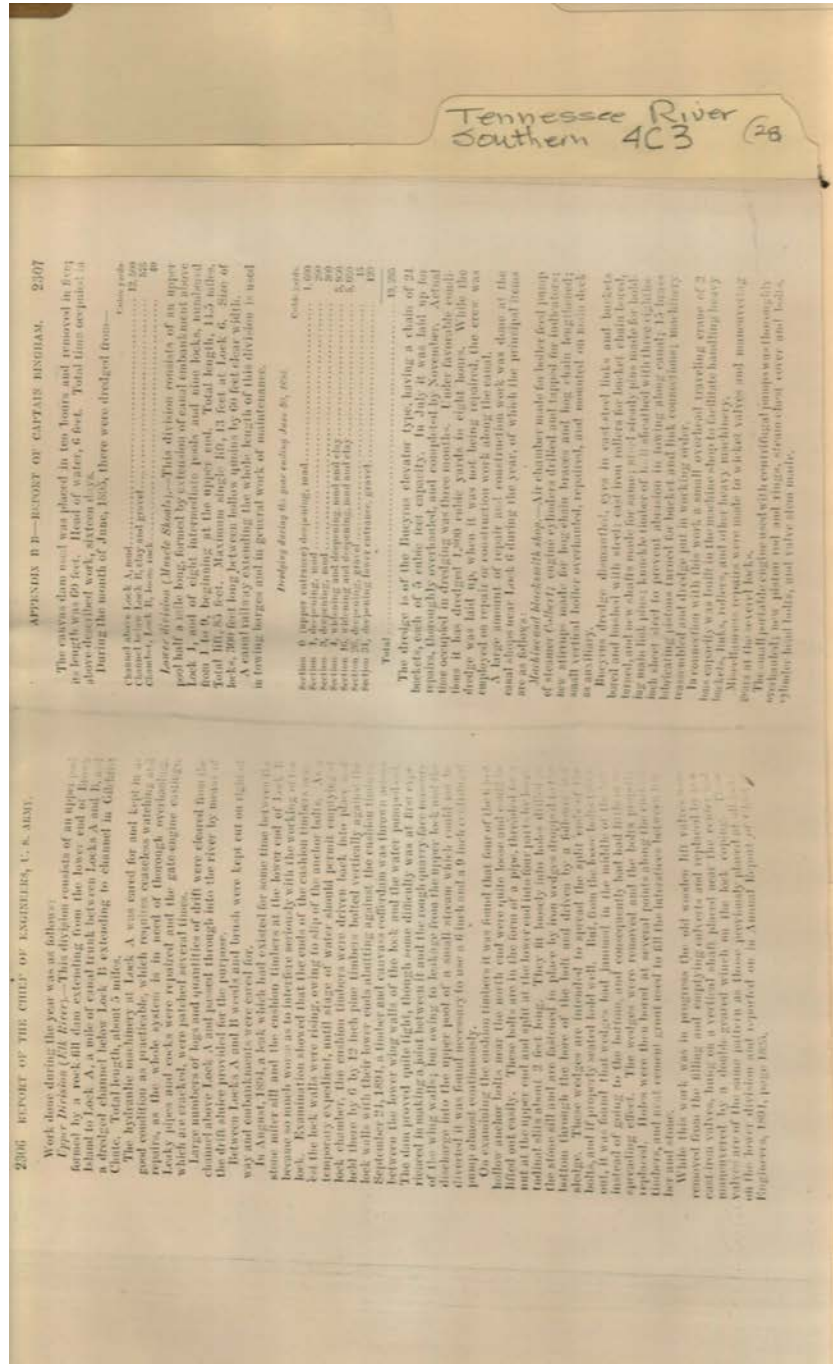
Smith,

2310 REPORT OF THE CHIEF OF ENGINEERS, U. S. ARMY.				APPENDIX B B—REPORT OF CAPTAIN BINGHAM. 2311			
Locomotives were employed in towing and miscellaneous hauling. Locks, buildings, and grounds have been cared for and kept in good condition.				Detailed expenses incurred for operating and care of Muscle Shoals Canal, etc., 1894.			
Steamer Colbert was engaged in carrying freight, towing coal, etc. The assistant engineer in charge of canal superintendence, Mr. W. A. McFarland, M. E., has been alert, efficient, and loyal.				Month.			
Statement of allotments.				Operating, ware, repairs, etc., Locks & Locks.			
November 26, 1890, \$10,000.00				Labor, Subsidy, Supplies, Total.			
July 1, 1891, 21,252.61				Grand Total.			
July 1, 1892, 43,252.75							
July 1, 1893, 60,975.75							
July 1, 1894, 63,775.63							
Total, 211,772.56							
Estimate of funds needed from appropriation for operating and care of canals and other works of navigation (indicate), to be applied to current expenses in operating the Muscle Shoals Canal, from July 1, 1894, to June 30, 1895.							
Amount required for fiscal year ending June 30, 1894, \$10,000.00							
Balance remaining from allotment of preceding year, exclusive of outstanding liabilities, 200.00							
Additional allotment required for fiscal year ending June 30, 1895, 61,752.61							
To be expended as follows:							
1 assistant engineer, at \$200 per month, \$2,400.00							
1 master mechanic, at \$100 per month, 1,200.00							
1 foreman, at \$100 per month, 1,200.00							
1 clerk, at \$100 per month, 1,200.00							
1 lock master, at \$150 per month each, 3,000.00							
1 assistant lock master, at \$100 per month each, 2,400.00							
1 locomotive engineer, at \$60 per month, 720.00							
1 engineer at machine shop, at \$50 per month, 600.00							
1 telephone lineman, at \$50 per month, 600.00							
2 blacksmiths, at \$45 per month each, 1,800.00							
1 cooper, at \$50 per month, 600.00							
1 cooper, at \$50 per month, 600.00							
20 laborers, at \$30 per month each, 7,200.00							
Dredging and low boat ways, \$500 per month, 6,000.00							
Maintenance, \$500 per month, 6,000.00							
Repairs of bridge, plant, material, and contingencies, 11,300.00							
Total for year, 63,000.00							
Detailed expenses incurred for operating and care of Muscle Shoals Canal during the fiscal year ending June 30, 1894.							
Month.				Office and administration, Operating, ware, repairs, etc., Locks A and B.			
				Subsidy, Supplies, Total.			
1894.				Labor, Subsidy, Supplies, Total.			
July, \$10,000.00				\$10,000.00			
August, 750.00				750.00			
September, 750.00				750.00			
October, 750.00				750.00			
November, 750.00				750.00			
December, 750.00				750.00			
1895.							
January, 110.00				110.00			
February, 110.00				110.00			
March, 110.00				110.00			
April, 110.00				110.00			
May, 110.00				110.00			
June, 110.00				110.00			
Total, 63,000.00				63,000.00			

Names:
Bingham, Captain
McFarland, W. A.

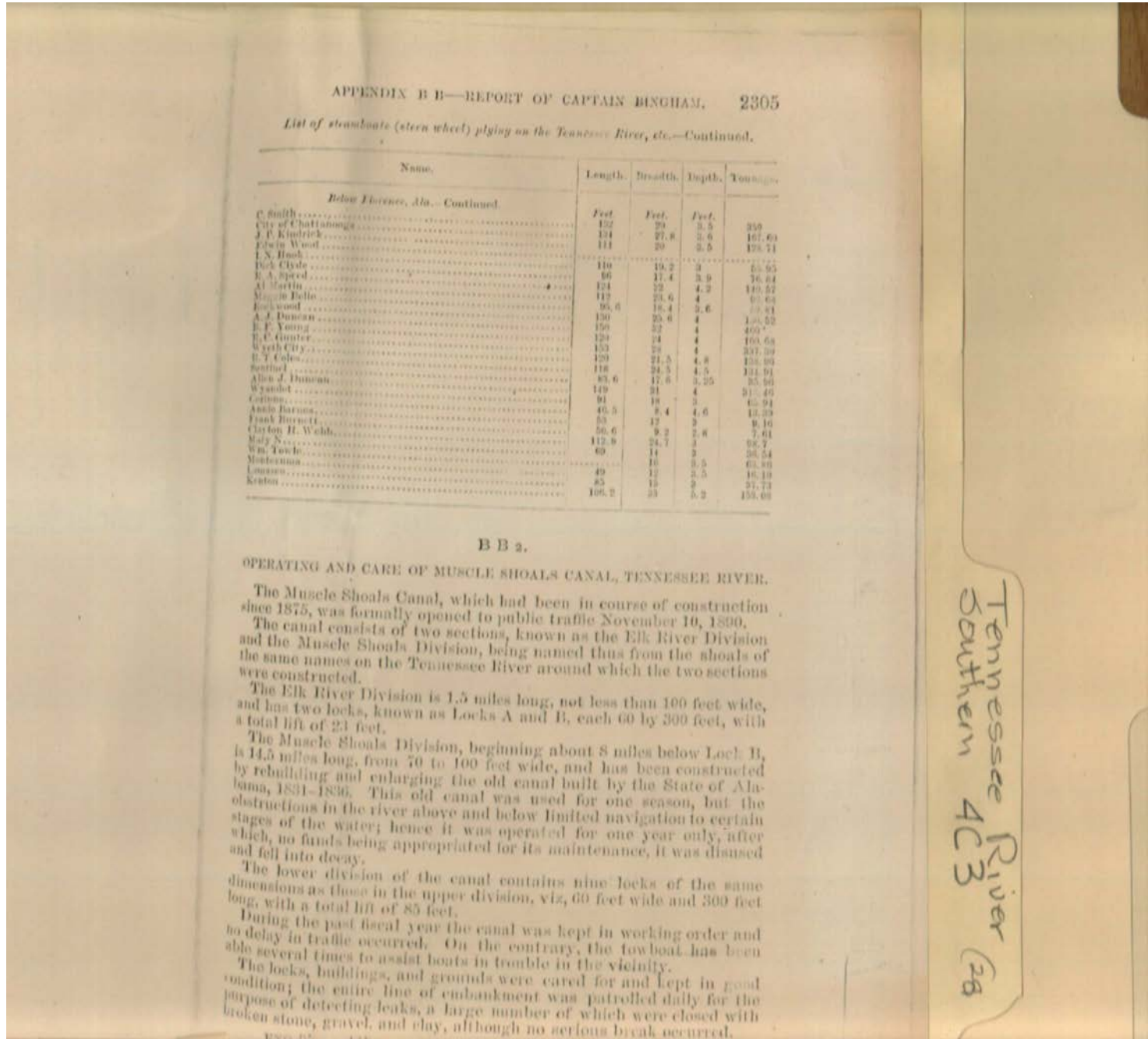
Types:
booklet

Tennessee River
Southern AC3
(28)



Names:
Repairs to Dam

Types:
booklet



Names:

Bingham, Captain

Muscle Shoals Canal

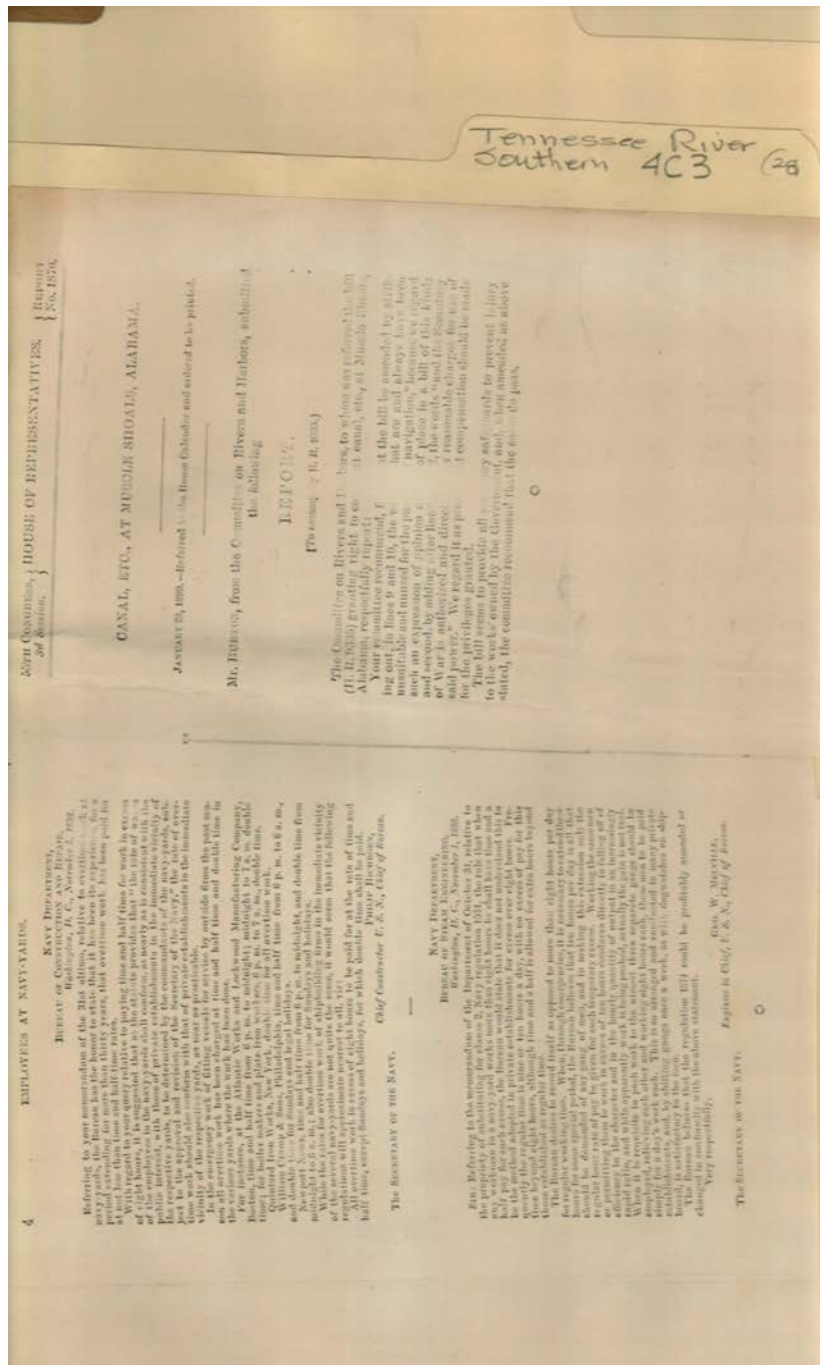
Opened

Types:

booklet

Dates:

Nov 10, 1890



Names:

Burton

Committee on Rivers
& Harbors

Hichborn, Philip
Melville, George W.

Places:

Washington, DC

Types:

booklet

correspondence

Dates:

Jan 28, 1899

Nov 01, 1898

Nov 03, 1898

Frances Cabaniss Roberts Collection: Series 4, Subseries C, Box 3, Folder 28
Tennessee River Notes and Records - Southern States

[Contents](#) [Index](#) [About](#)

Table of Contents

[Image 1](#) (r04c03-28-000-0129)

[Image 2](#) (r04c03-28-000-0130)

[Image 3](#) (r04c03-28-000-0132)

[Image 4](#) (r04c03-28-000-0133)

[Image 5](#) (r04c03-28-000-0134)

[Image 6](#) (r04c03-28-000-0135)

[Image 7](#) (r04c03-28-000-0136)

[Image 8](#) (r04c03-28-000-0137)

[Image 9](#) (r04c03-28-000-0138)

[Image 10](#) (r04c03-28-000-0139)

[Image 11](#) (r04c03-28-000-0140)

[Image 12](#) (r04c03-28-000-0141)

[Image 13](#) (r04c03-28-000-0142)

[Image 14](#) (r04c03-28-000-0143)

[Table of Contents](#)

[Name & Place Index](#)

[About the Collection](#)

Frances Cabaniss Roberts Collection: Series 4, Subseries C, Box 3, Folder 28

Tennessee River Notes and Records - Southern States

[Contents](#) [Index](#) [About](#)

Name & Place Index

Bingham, Captain [10](#), [11](#), [13](#)

Blair, [3](#)

Burton [14](#)

Chief of Engineers Report [3](#)

Clark, Tere A. [8](#)

Committee on Rivers & Harbors [14](#)

Crow, N. L., Jr. [3](#)

Fay, J. A. & Co. [5](#)

Halter, Charles J. [3](#)

Hichborn, Philip [14](#)

Hodges, Harry F. [4](#)

King, William R. Captain [2](#)

Kingman, Captain [3](#), [6](#), [7](#)

McCravy, G. W. [2](#)

McFarland, W. A. [5](#), [8](#), [10](#)

McFarland, Walter, Major [3](#)

Melville, Geoge W. [14](#)

Merrill, S. P. [3](#)

Muscle Shoals Canal Opened [13](#)

Muscle Shoals Canal Operating & Care [7](#)

Muscle Shoals Canal [3](#)

Neely, [9](#)

Poe, O. M., Colonel [4](#)

Poore, [1](#)

Price, [3](#)

Repairs to Dam [12](#)

Roads & Canals in Alabama Report [1](#), [2](#)

Smith, [9](#)

Steamboat List [7](#)

Stickney, Amos, Lt. Colonel [4](#)

Tennessee River below Chattanooga Report [4](#)

Washington, DC [14](#)

Frances Cabaniss Roberts Collection

Preferred Citation: Frances Cabaniss Roberts Collection, Archives and Special Collections, M. Louis Salmon Library, University of Alabama in Huntsville, Huntsville, AL.

Collection Scope and Content: The Collection of 114 Linear ft. includes a total of 156 Archival Boxes. The Frances Cabaniss Roberts collection covers the historical records of the Cabaniss Roberts family. This collection contains extensive correspondence records of the Cabaniss Roberts family circa 1830 to 1930.

Archives/Special Collections Access Restrictions: None

Conditions Governing Use: This material may be protected under U. S. Copyright Law (Title 17, U.S. Code) which governs the making of photocopies or reproductions of copyrighted materials. You may use the digitized material for private study, scholarship, or research. Though the University of Alabama in Huntsville Archives and Special Collections has physical ownership of the material in its collections, in some cases we may not own the copyright to the material. It is the patron's obligation to determine and satisfy copyright restrictions when publishing or otherwise distributing materials found in our collections.

Provenance: Gift of Johanna Shields on October 28, 2006.



**The UAH Archives and Special Collections
M. Louis Salmon Library**