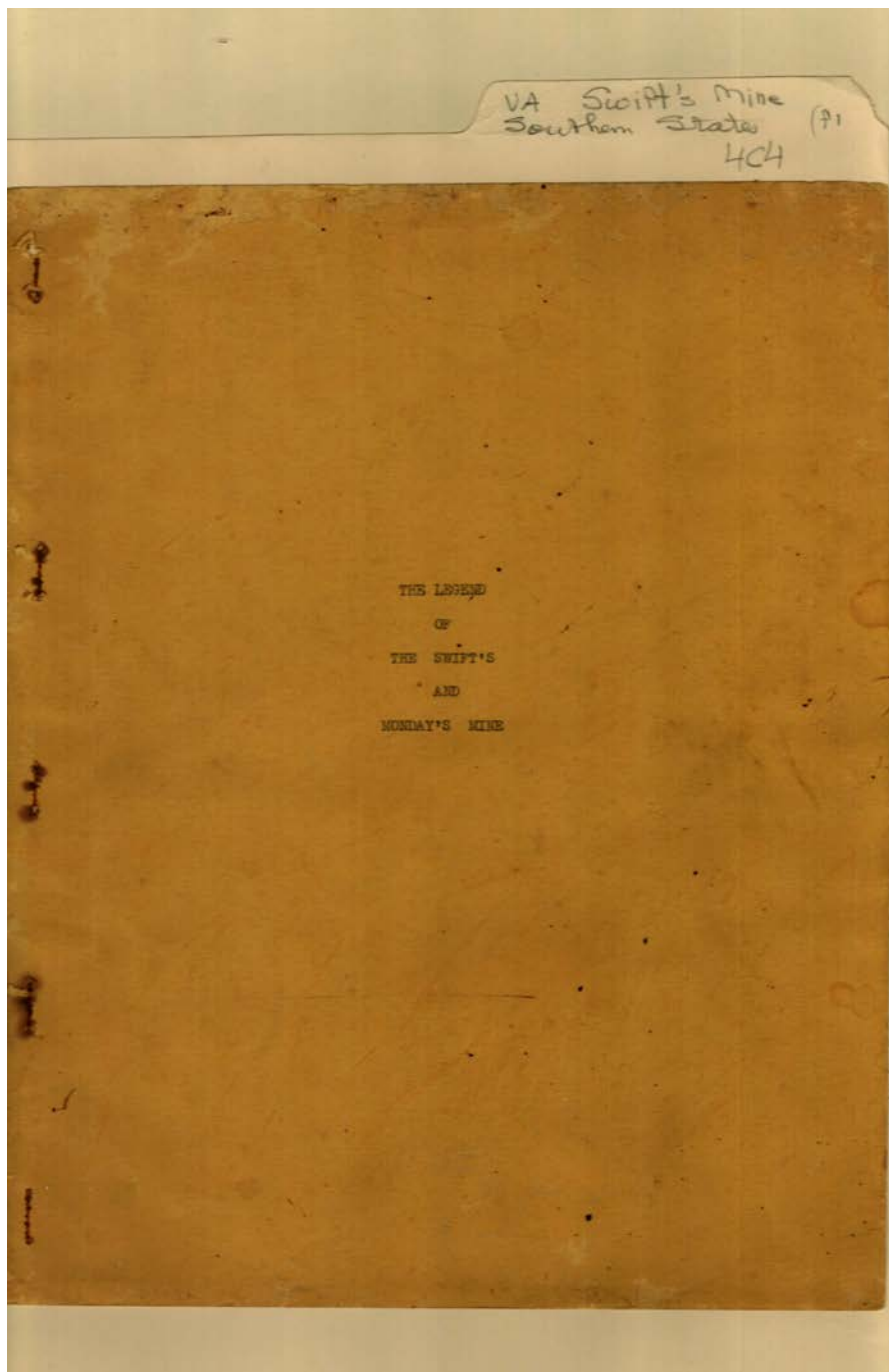


Frances Cabaniss Roberts Collection: Series 4, Subseries C, Box 4, Folder 1  
Virginia, "The Legend of Smith & Monday's Mine" by Daugherty, A.H.

Image 1 r04c04-01-000-0004 [Contents](#) [Index](#) [About](#)



Fictional Story

**Names:**

Legend of the Swift's  
& Monday's Mine

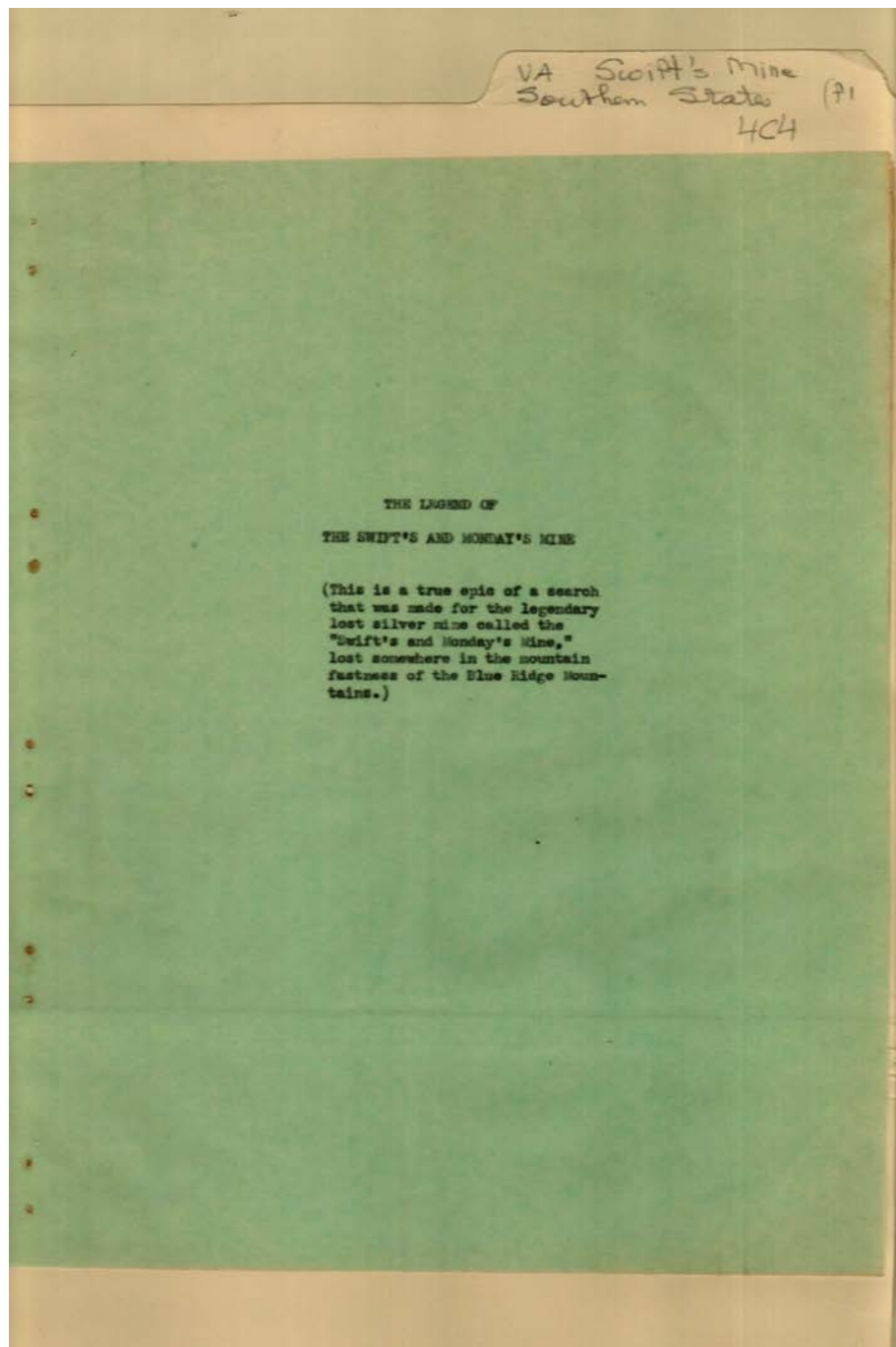
**Types:**

story

Frances Cabaniss Roberts Collection: Series 4, Subseries C, Box 4, Folder 1

Virginia, "The Legend of Smith & Monday's Mine" by Daugherty, A.H.

Image 2 r04c04-01-000-0005 [Contents](#) [Index](#) [About](#)



Fictional Story

**Names:**

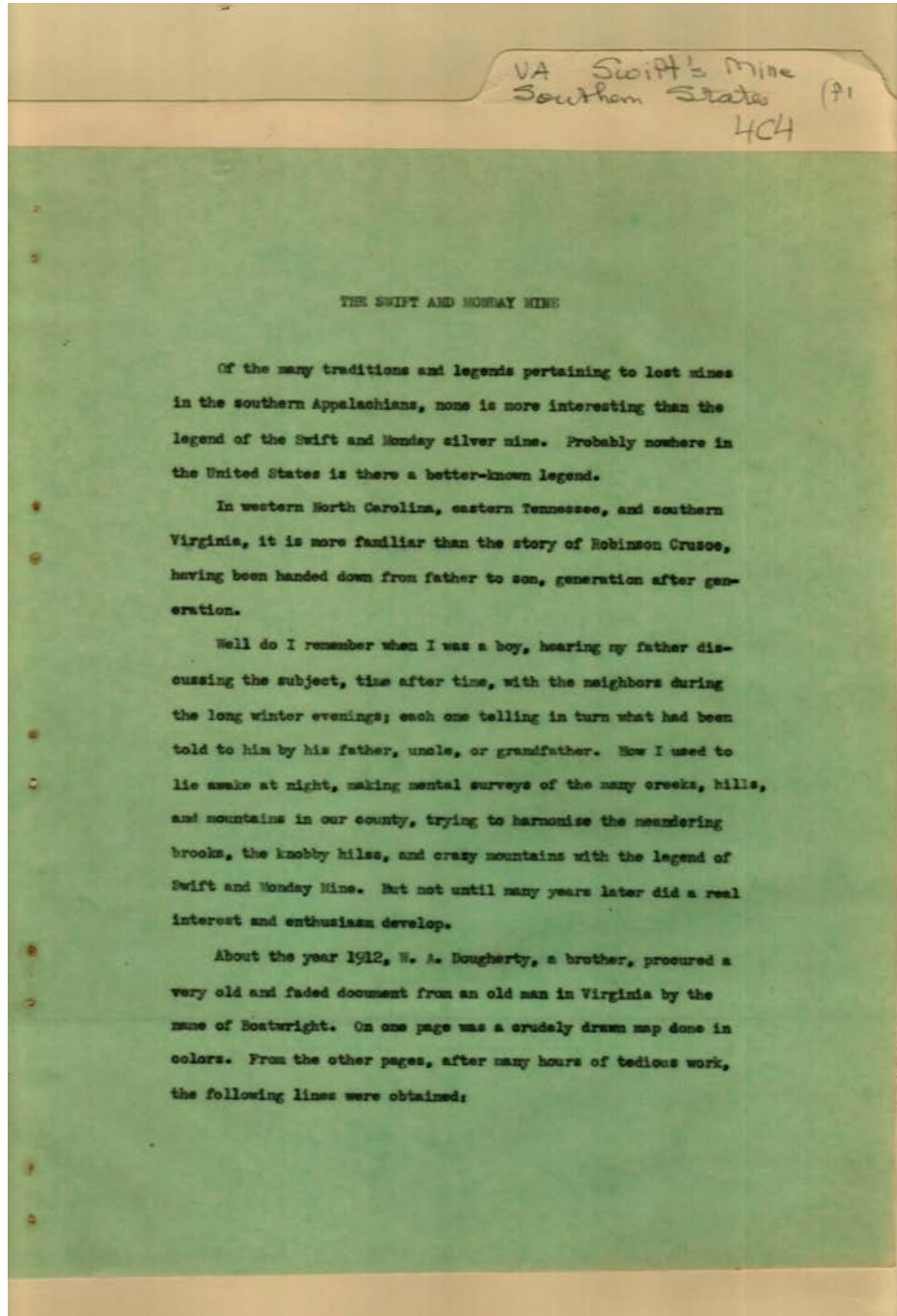
Legend of the Swift's  
& Monday's Mine

**Places:**

Blue Ridge Mtns

**Types:**

story



Fictional Story

**Names:**

Boatwright,  
Crusoe, Robinson

Dougherty, W. A.

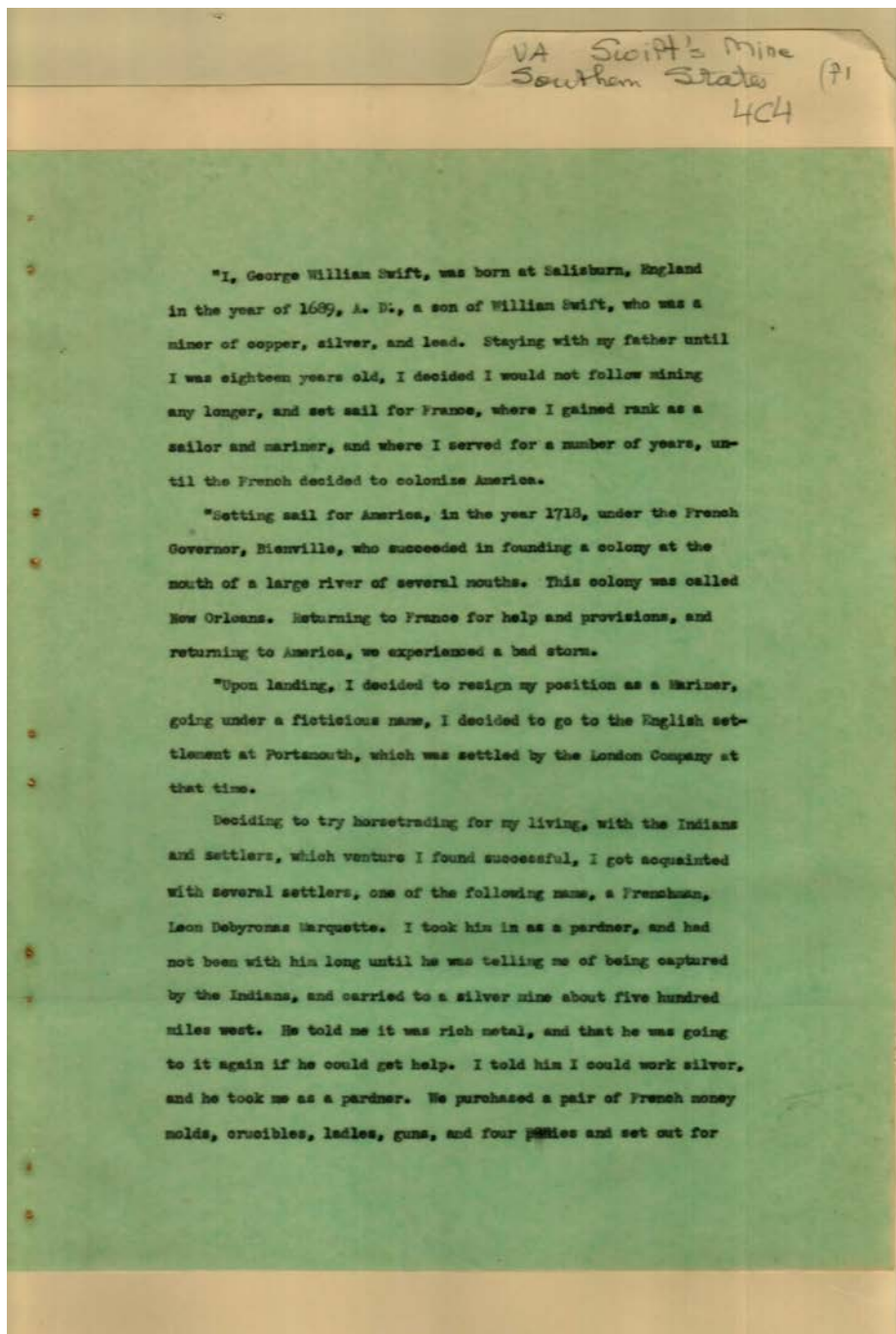
Swift & Monday  
Mine

**Types:**

story

Frances Cabaniss Roberts Collection: Series 4, Subseries C, Box 4, Folder 1  
Virginia, "The Legend of Smith & Monday's Mine" by Daugherty, A.H.

Image 4 r04c04-01-000-0007 [Contents](#) [Index](#) [About](#)



Fictional Story

**Names:**

Bienville,

Marquette, Leon  
Debyronas

Swift, George  
William

Swift, William

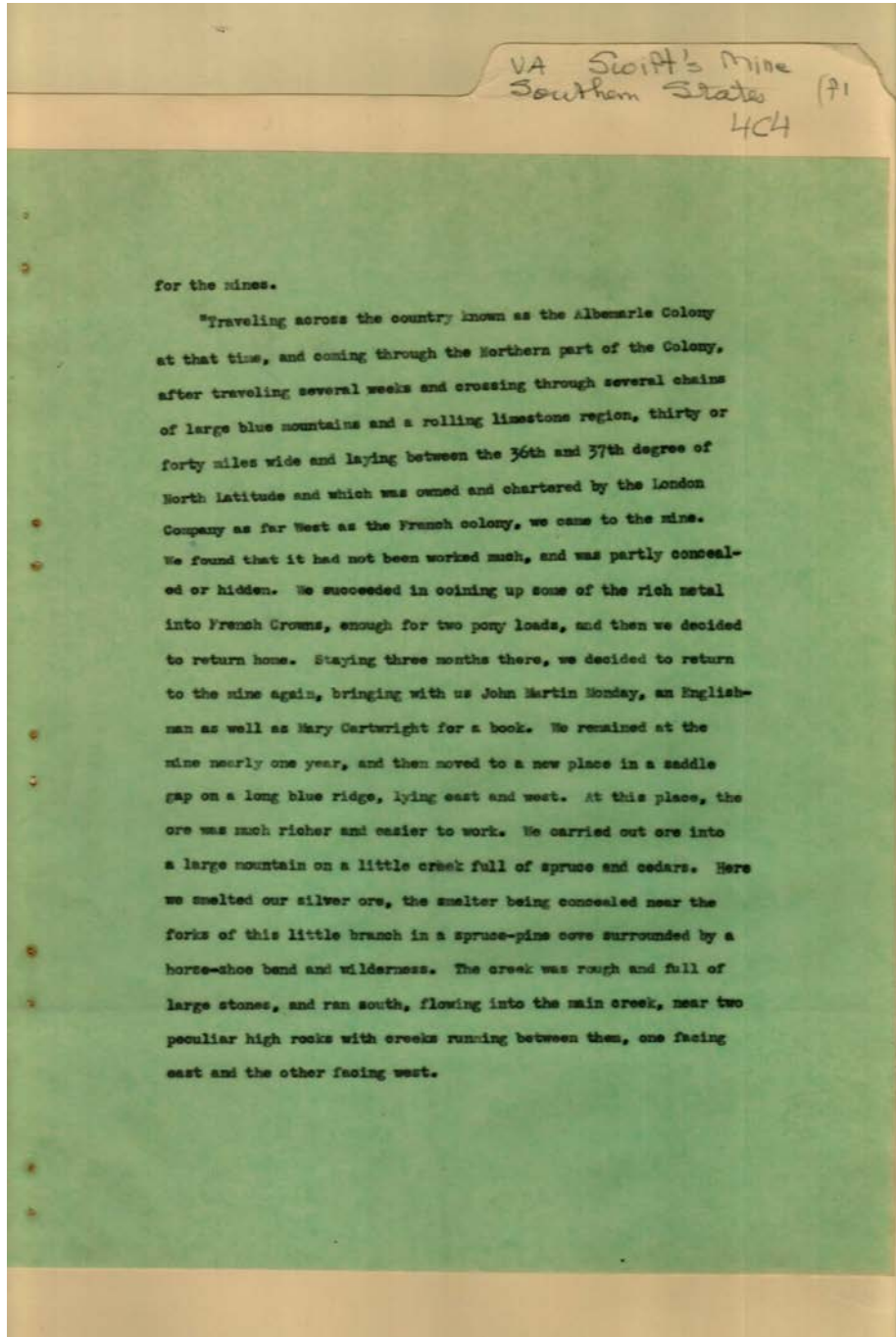
**Types:**

story



Frances Cabaniss Roberts Collection: Series 4, Subseries C, Box 4, Folder 1  
Virginia, "The Legend of Smith & Monday's Mine" by Daugherty, A.H.

Image 5 r04c04-01-000-0008 [Contents](#) [Index](#) [About](#)



Fictional Story

**Names:**

Cartwright, Mary

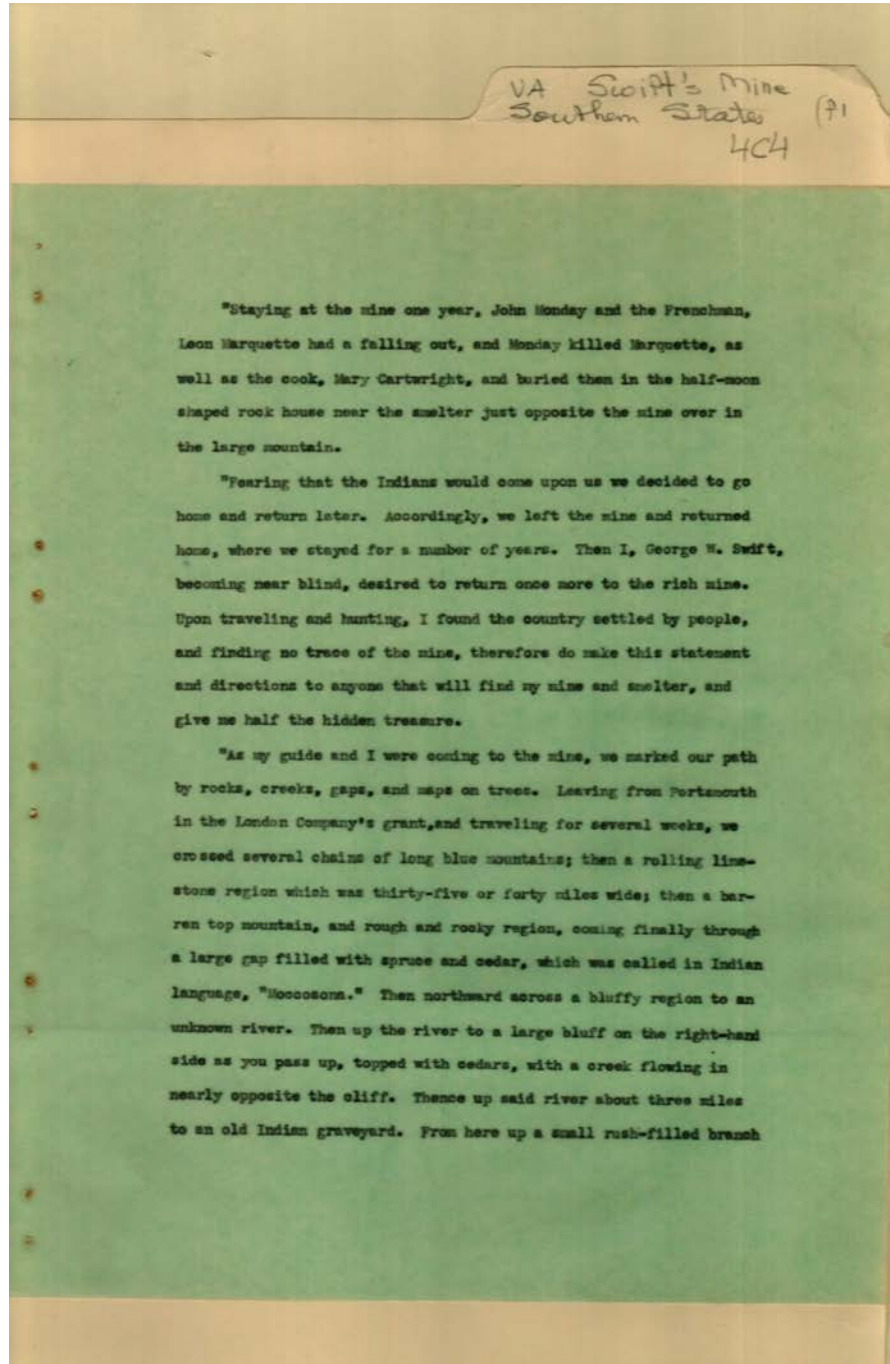
Monday, John Martin

**Types:**

story

Frances Cabaniss Roberts Collection: Series 4, Subseries C, Box 4, Folder 1  
Virginia, "The Legend of Smith & Monday's Mine" by Daugherty, A.H.

Image 6 r04c04-01-000-0009 [Contents](#) [Index](#) [About](#)



Fictional Story

**Names:**

Cartwright, Mary

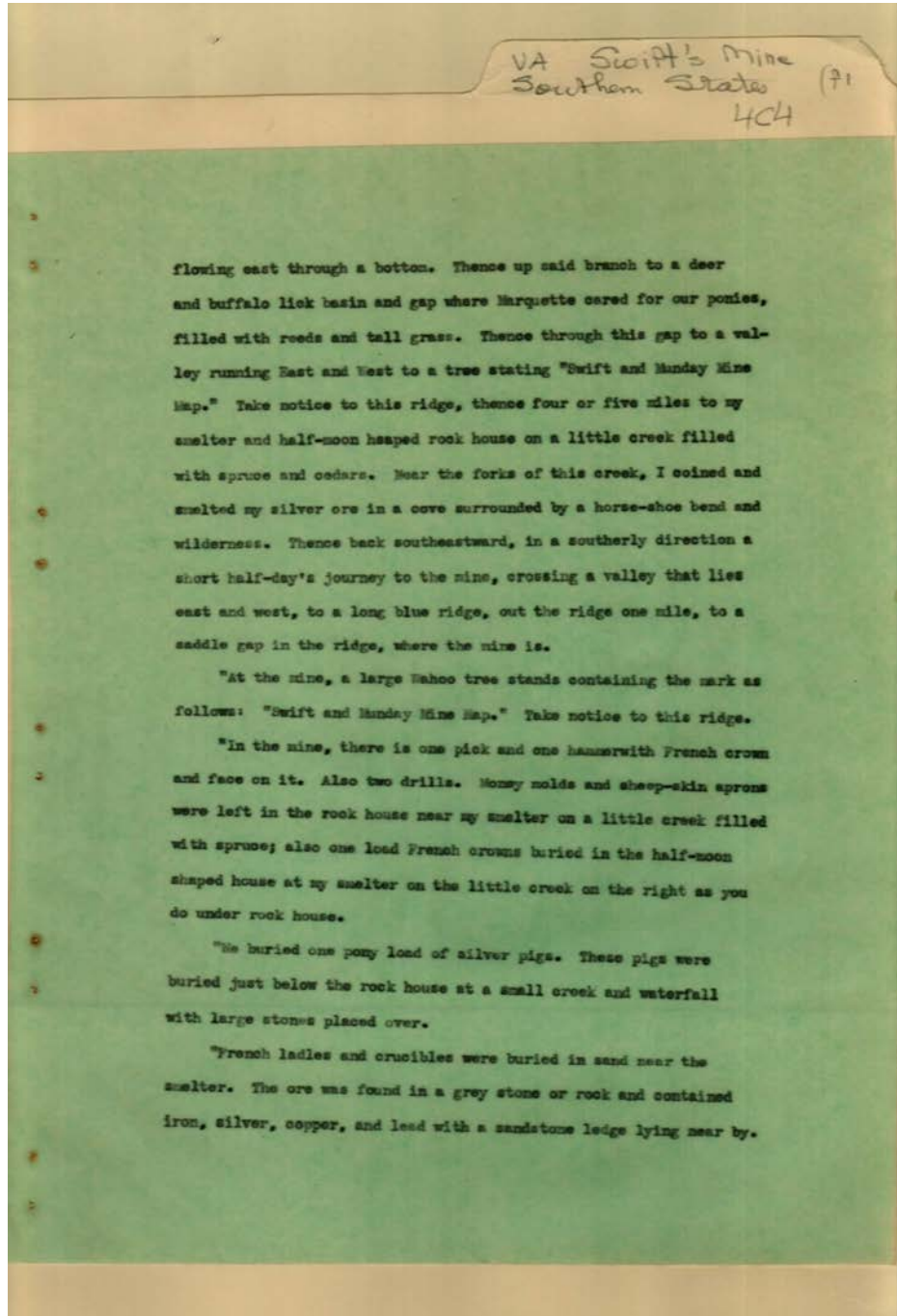
Marquette, Leon

Monday, John

Swift, George W.

**Types:**

story



Fictional Story

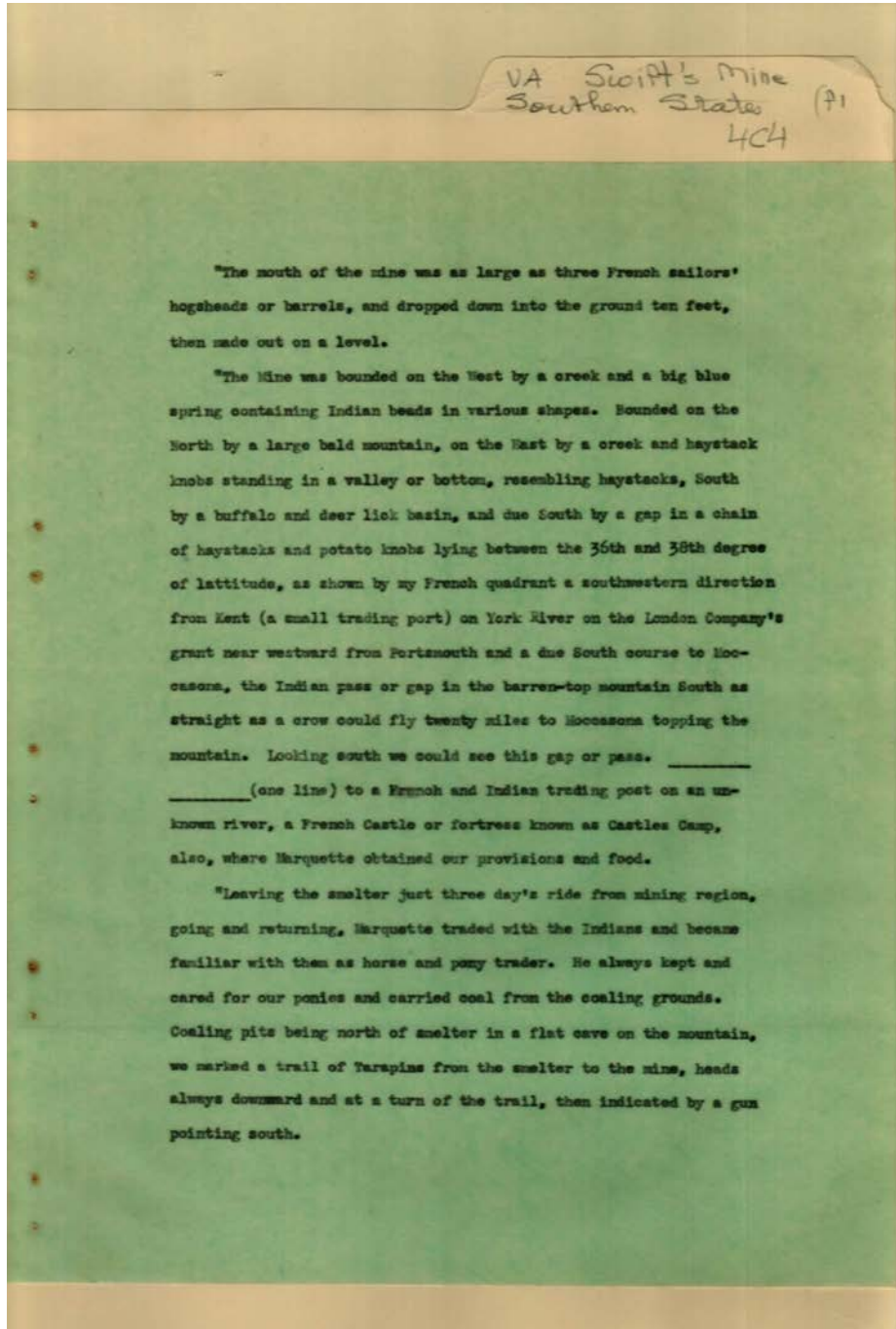
**Names:**

Marquette,

**Types:**

story





Fictional Story

**Names:**

Marquette,

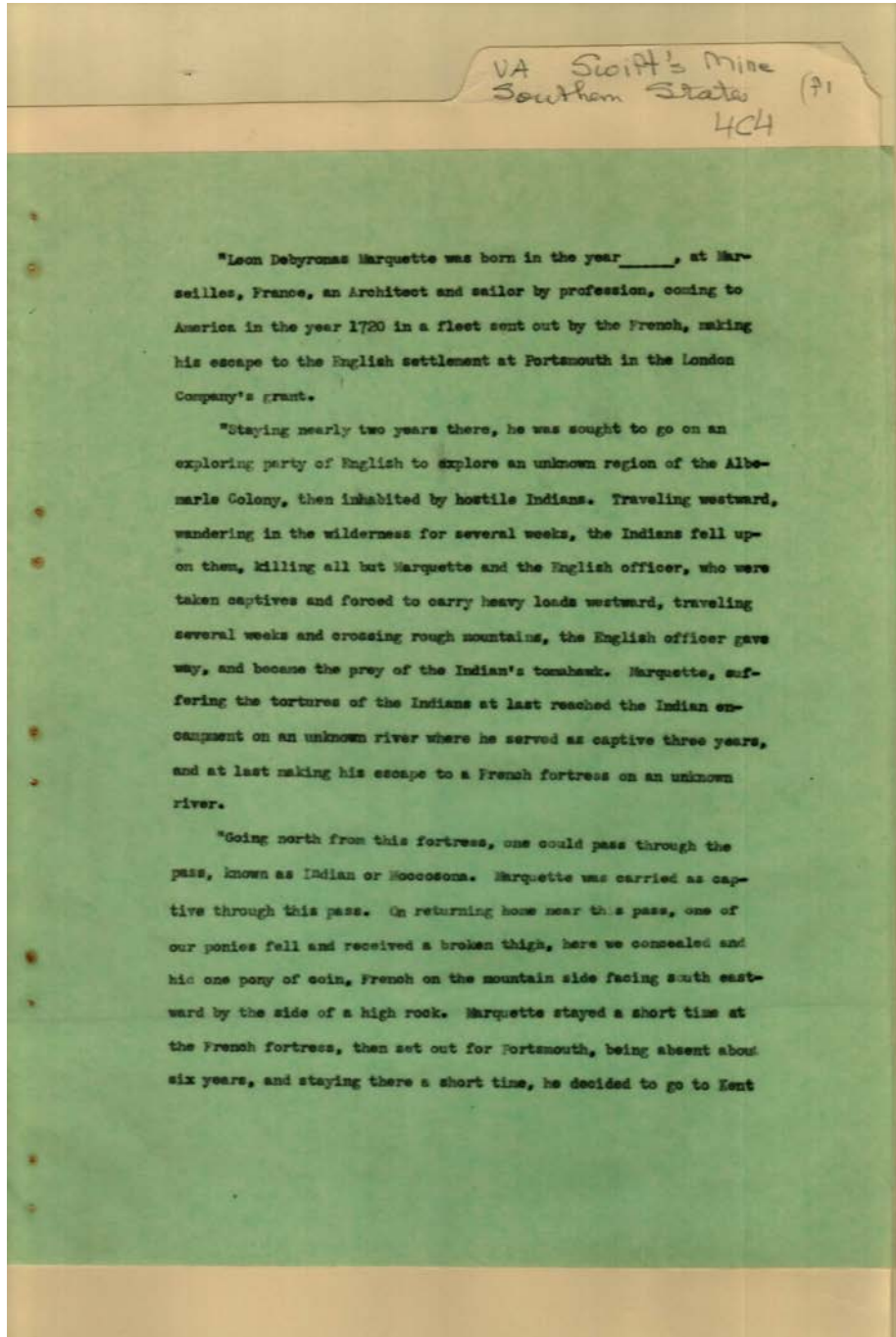
**Types:**

story



Frances Cabaniss Roberts Collection: Series 4, Subseries C, Box 4, Folder 1  
Virginia, "The Legend of Smith & Monday's Mine" by Daugherty, A.H.

Image 9 r04c04-01-000-0012 [Contents](#) [Index](#) [About](#)



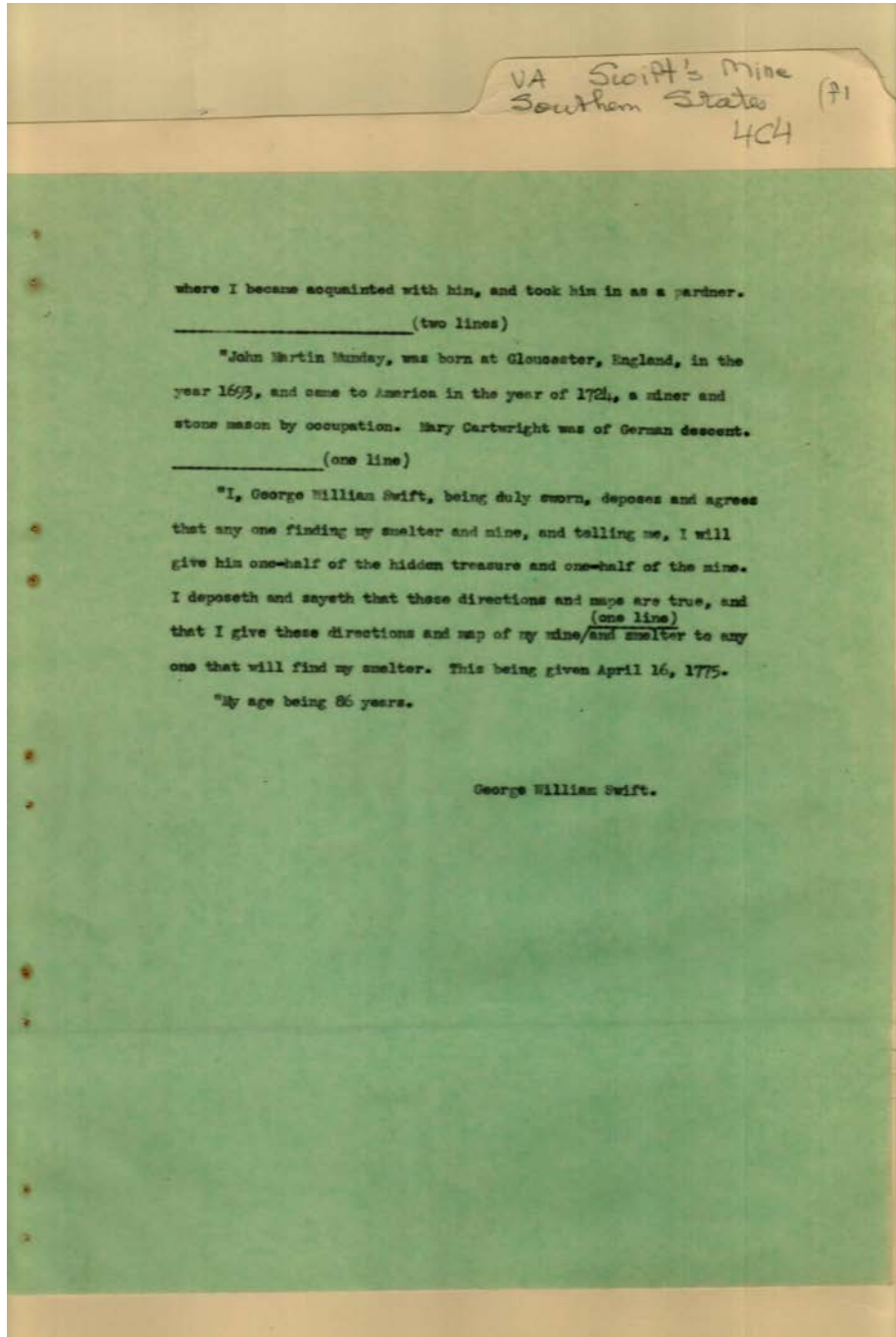
Fictional Story

**Names:**

Marquette, Leon  
Debyronas

**Types:**

story



Fictional Story

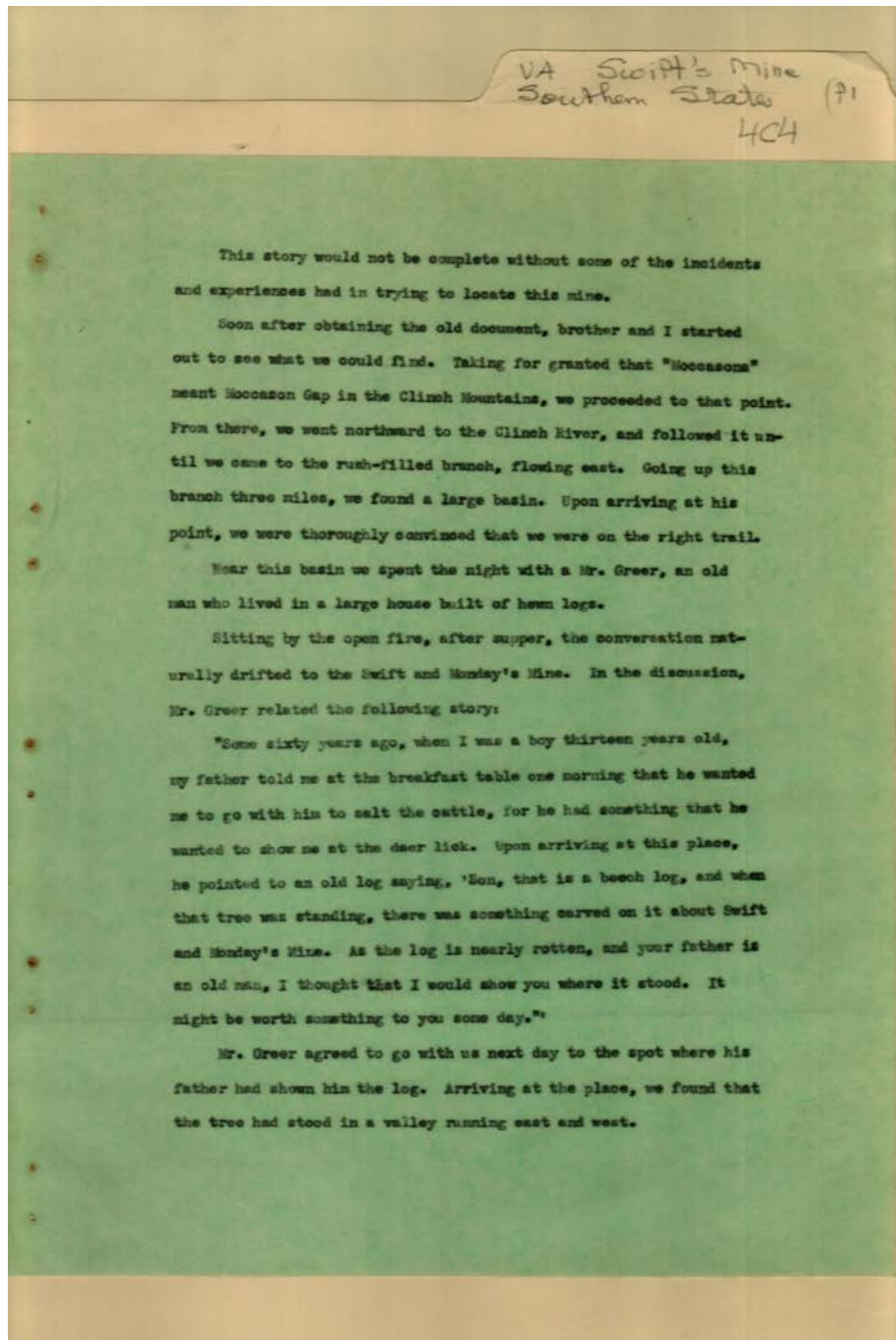
**Names:**

Cartwright, Mary  
Munday, John Martin

Swift, George  
William

**Types:**

story



Fictional Story

**Names:**

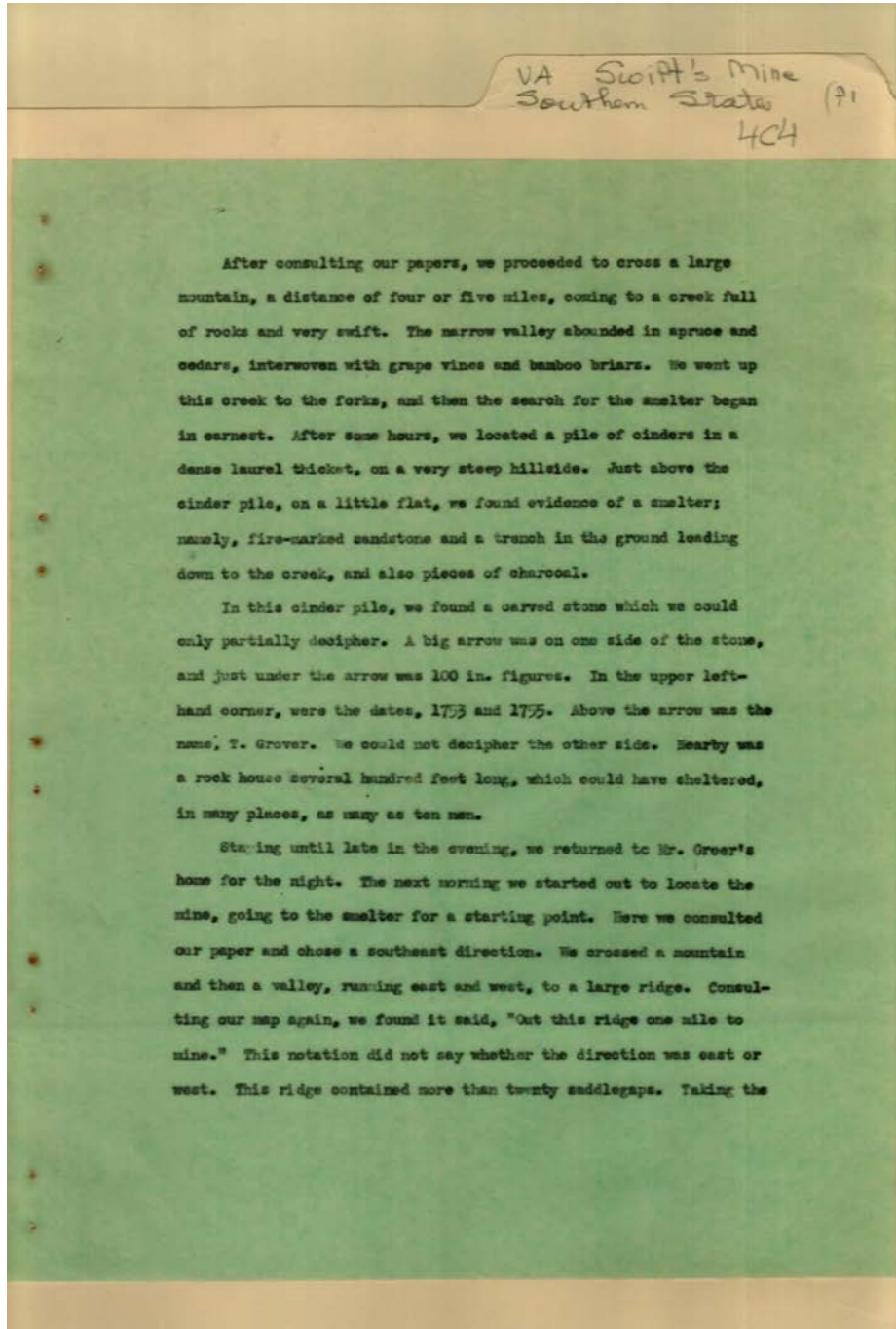
Greer,

Monday,

Swift,

**Types:**

story



Fictional Story

**Names:**

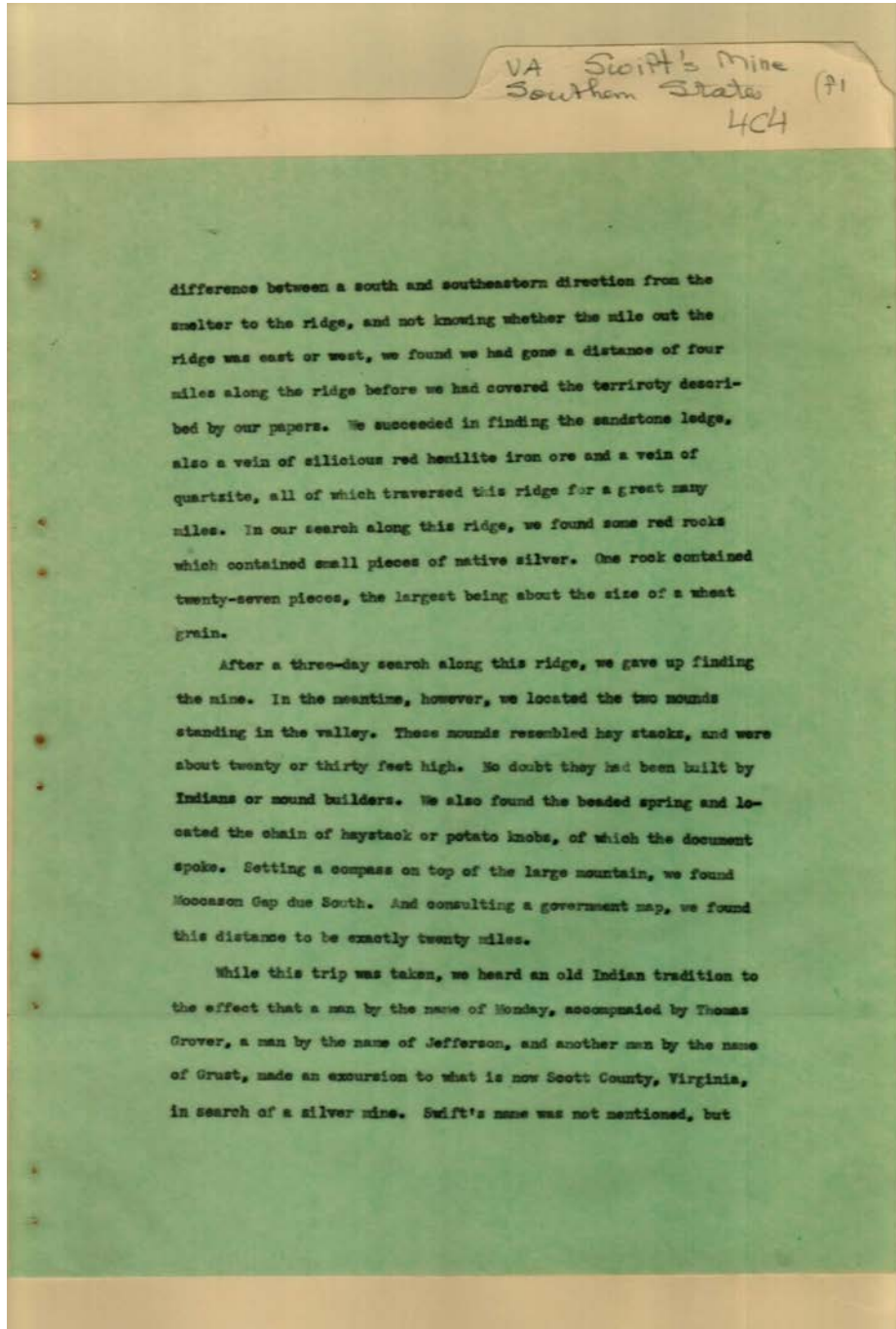
Greer,

Grover, T.

**Types:**

story





Fictional Story

**Names:**

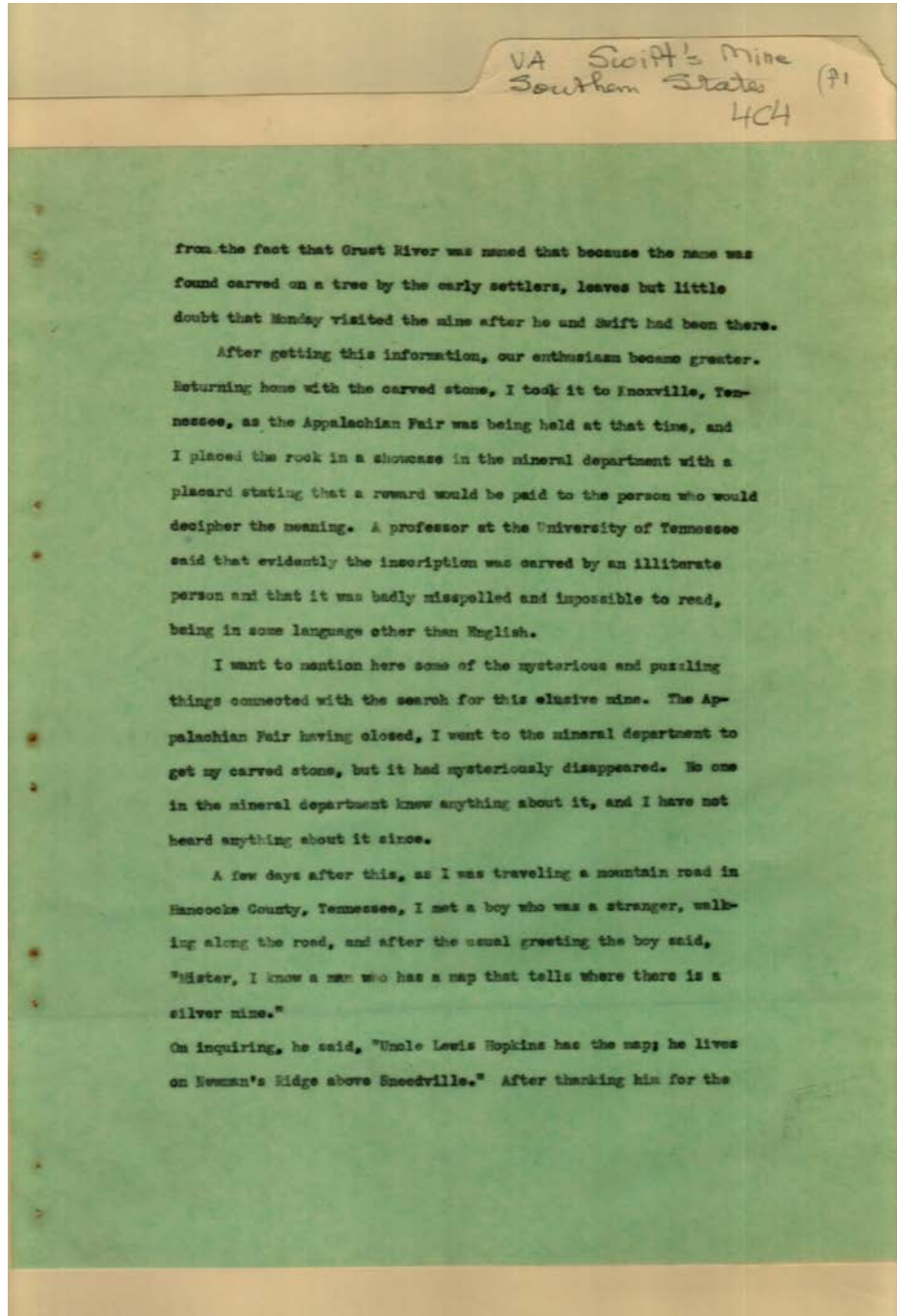
Grover, Thomas  
Grust,

Jefferson,  
Monday,

Swift,

**Types:**

story



Fictional Story

**Names:**

Hopkins, Lewis

Monday,

**Types:**

story

VA Swift's Mine  
Southern States (71)  
404

information, I went to Sneedville and called on Captain Jarvis, a veteran of the Mexican War, who was well informed, and who was well acquainted with all the citizens of that community. He was much interested when asked about Mr. Hopkins and his map. He said that Mr. Hopkins had obtained the map from his years ago. Captain Jarvis said that he would arrange for Mr. Hopkins to come down to his place the next evening and bring his map. We met at the appointed time, and very soon were discussing Swift and Monday's Mine. While Mr. Hopkins was very interested, he was not inclined to show his map, saying that he had hunted through the hills of Tennessee for years for the mine and still hoped to find it. After much discussion and many propositions, he finally agreed to show his map on conditions. First, I was to draw a map of the county where the smelter was located. Second, Captain Jarvis was to take the two maps and if they should agree on the main points, then he was to let me see his map. After making a rough sketch with a pencil, marking main points such as boundaries, creeks, hills, valleys, location of smelter, etc., I gave the paper to Captain Jarvis. After comparing the two papers for a few minutes, Captain Jarvis said, "Lewis, you will have to show your map, for they are as much alike as two black-eyed pease." Mr. Hopkins then showed the map.

The map consisted of twelve pieces, having been doubled so many times that it came apart where it was folded. Placing them on the table in their proper positions, a fine picture map was shown; coaling ground, smelter, etc., being plainly shown by pictures. The

Fictional Story

**Names:**

Hopkins,

Jarvis, Captain

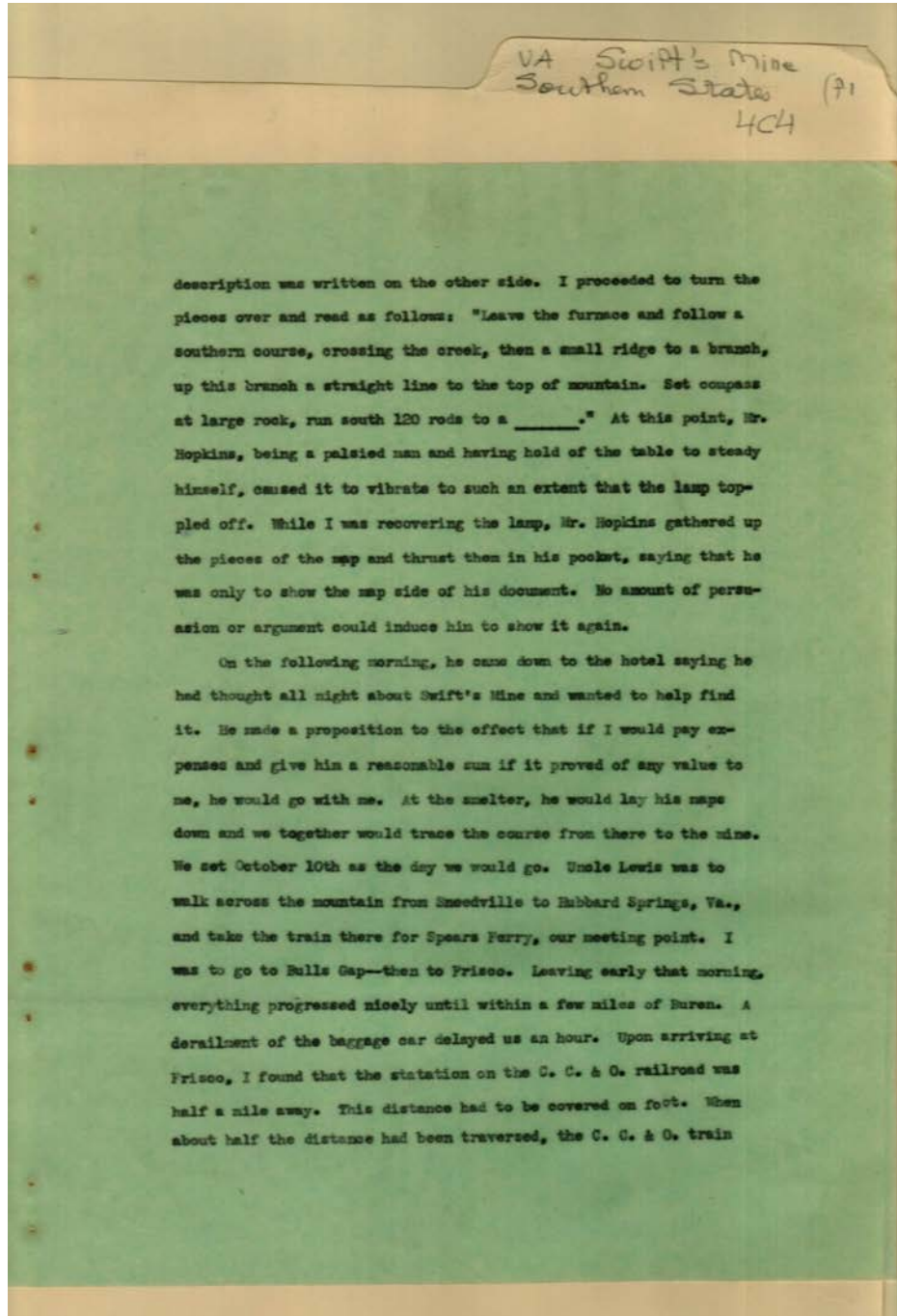
Monday,

Swift,

**Types:**

story





Fictional Story

**Names:**

, Lewis

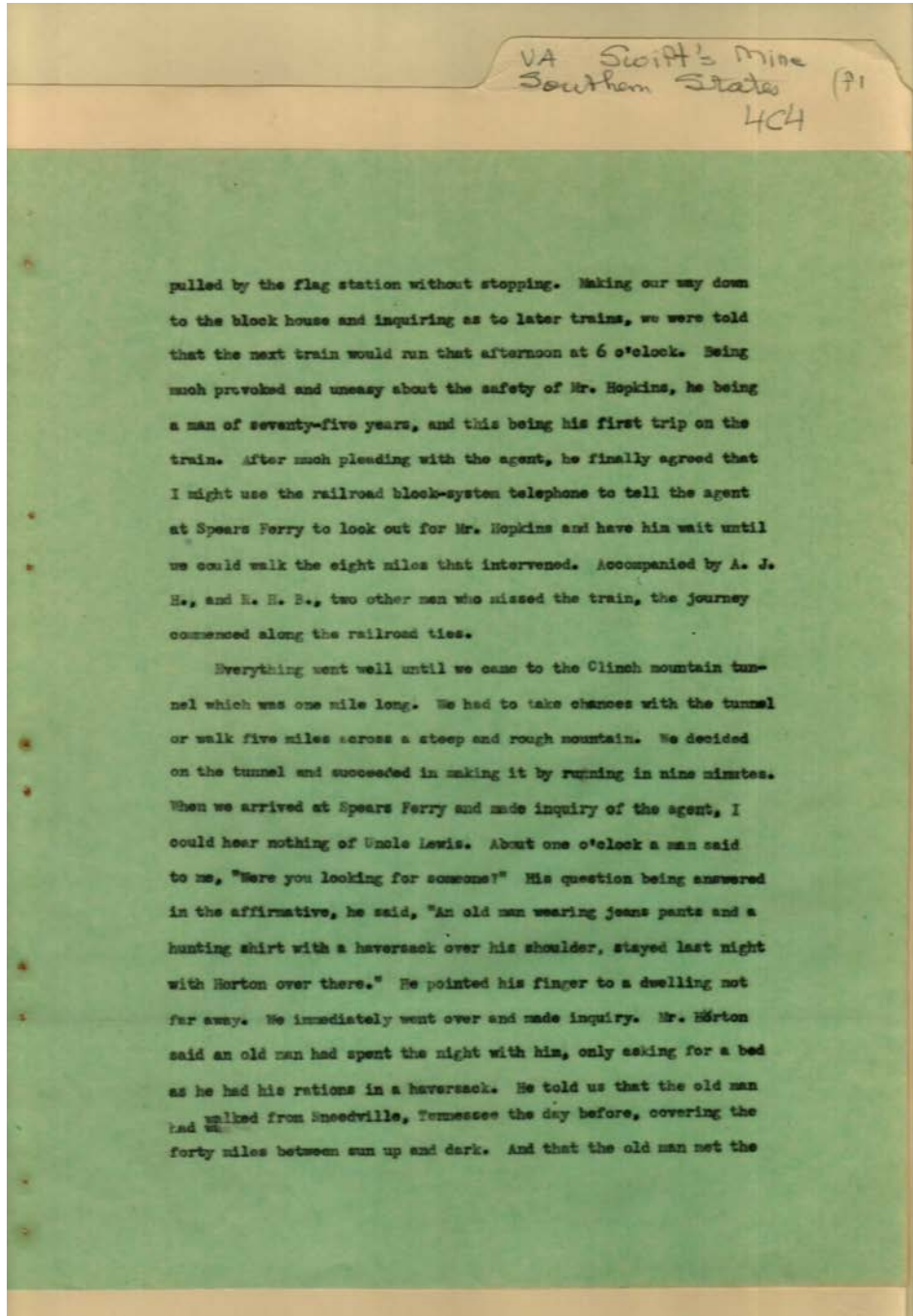
Hopkins,

Swift,

**Types:**

story





**Topics:**

Fictional Story

man's initials

**Names:**

, Lewis  
A. J. H.

Hopkins,  
Horton,

R. H. B.

**Types:**

story

VA Swift's Mine  
Southern States (71)  
LCH

train and when the man he was expecting did not show up, he had started back down the valley. I hired Mr. Horton to ride a fast horse down the valley in an effort to overtake him. After riding for three hours and failing to find him, Mr. Horton returned.

That ended the mine hunt for the time being. Returning home, I had to wait for a few days for an opportunity to go to Sneedville. As soon as Mr. Hopkins learned I was in town, he came down to my hotel. His first question was, "Why did you not meet me at Spears Ferry?" After explaining the causes, he said, "We will go again, and the one that gets to Spears Ferry first will wait for the other."

Our next date was set for October 30. When I arrived at Spears Ferry, the first man I saw was Mr. Hopkins. He boarded the train with me for a journey of thirty-five miles, that being his first time aboard a train. Arriving at our destination, we walked three miles over to a farmer's home and spent the night with him. Starting at daybreak the next morning, we were soon well on our way. By nine o'clock, we were on top of the large mountain. Stopping for a rest, I said, "Uncle Lewis, you have had a mental picture of Swift's and Monday's Mine in your mind for years. Now you must not expect to find it just as you have it pictured." His reply was, "I can go from the smelter to the mine the darkest night that comes." We continued our journey down the mountain, through a heavy growth of laurel and holly, crossing the creek, climbing a steep bank, and clambering through the laurels, finally arriving at the smelter. Lifting a large cinder, I said, "Here we are, Uncle Lewis, here is

Fictional Story

Names:

, Lewis

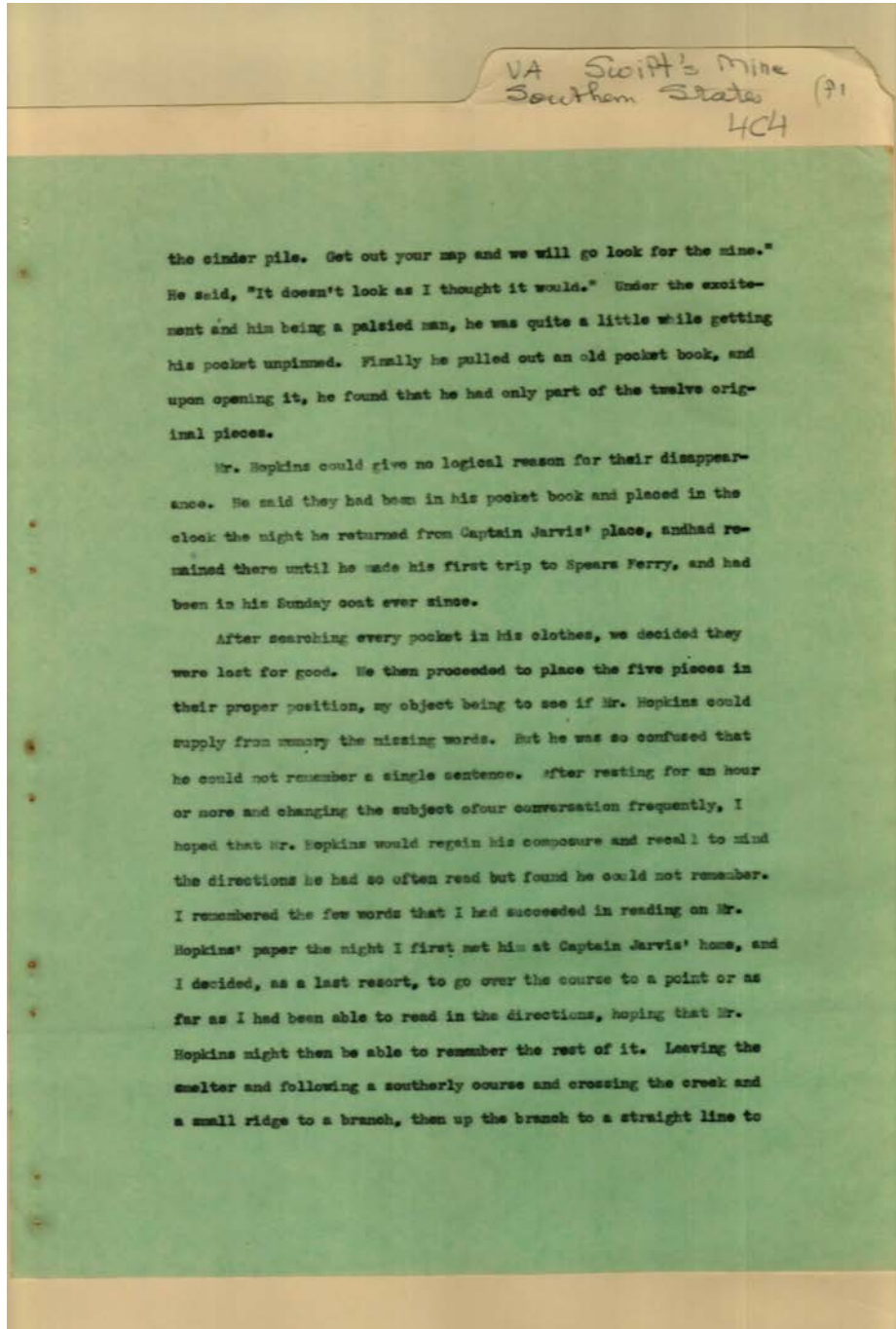
Horton,

Monday,

Swift,

Types:

story



Fictional Story

**Names:**

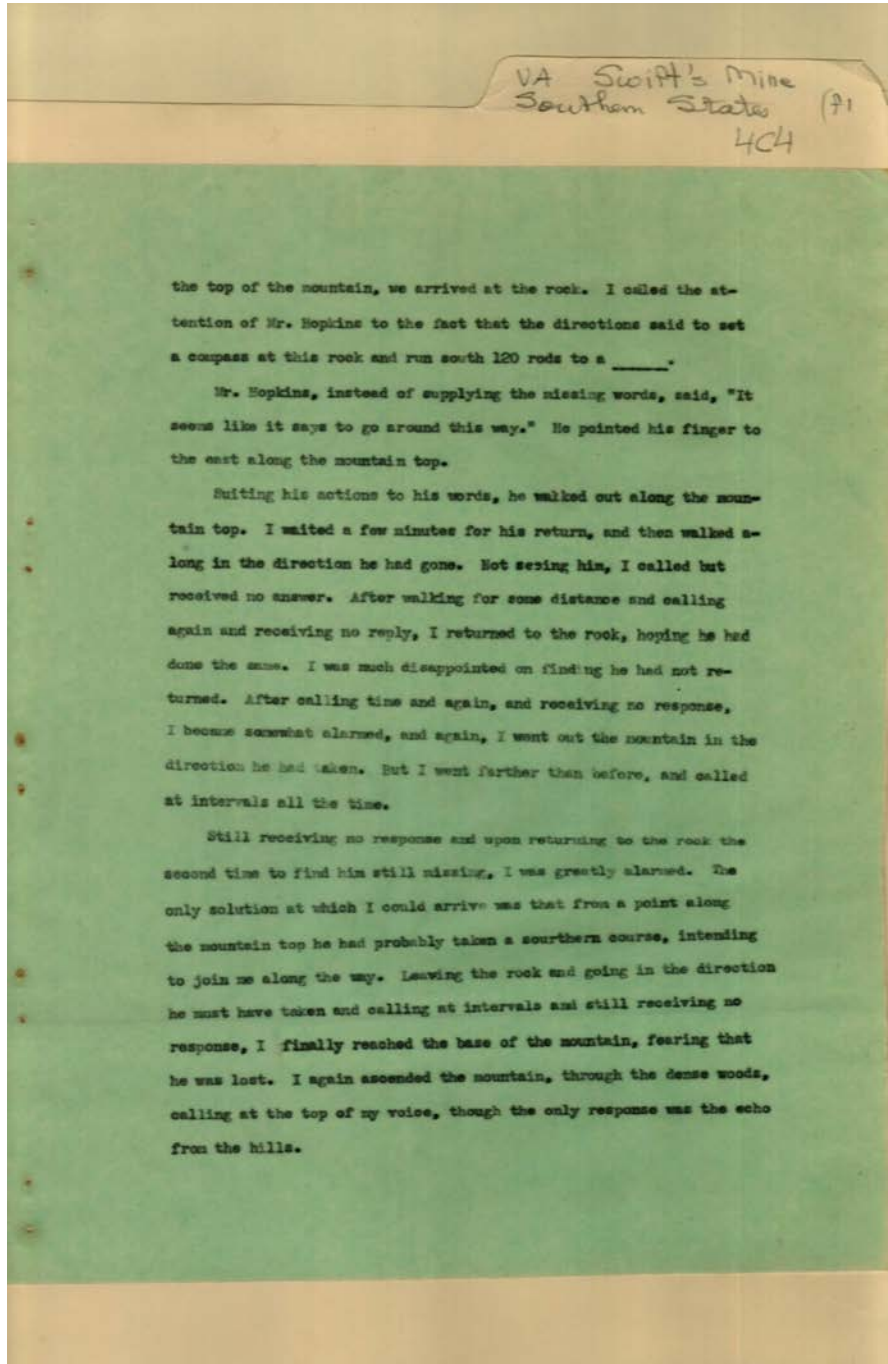
Hopkins,

Jarvis, Captain

**Types:**

story





Fictional Story

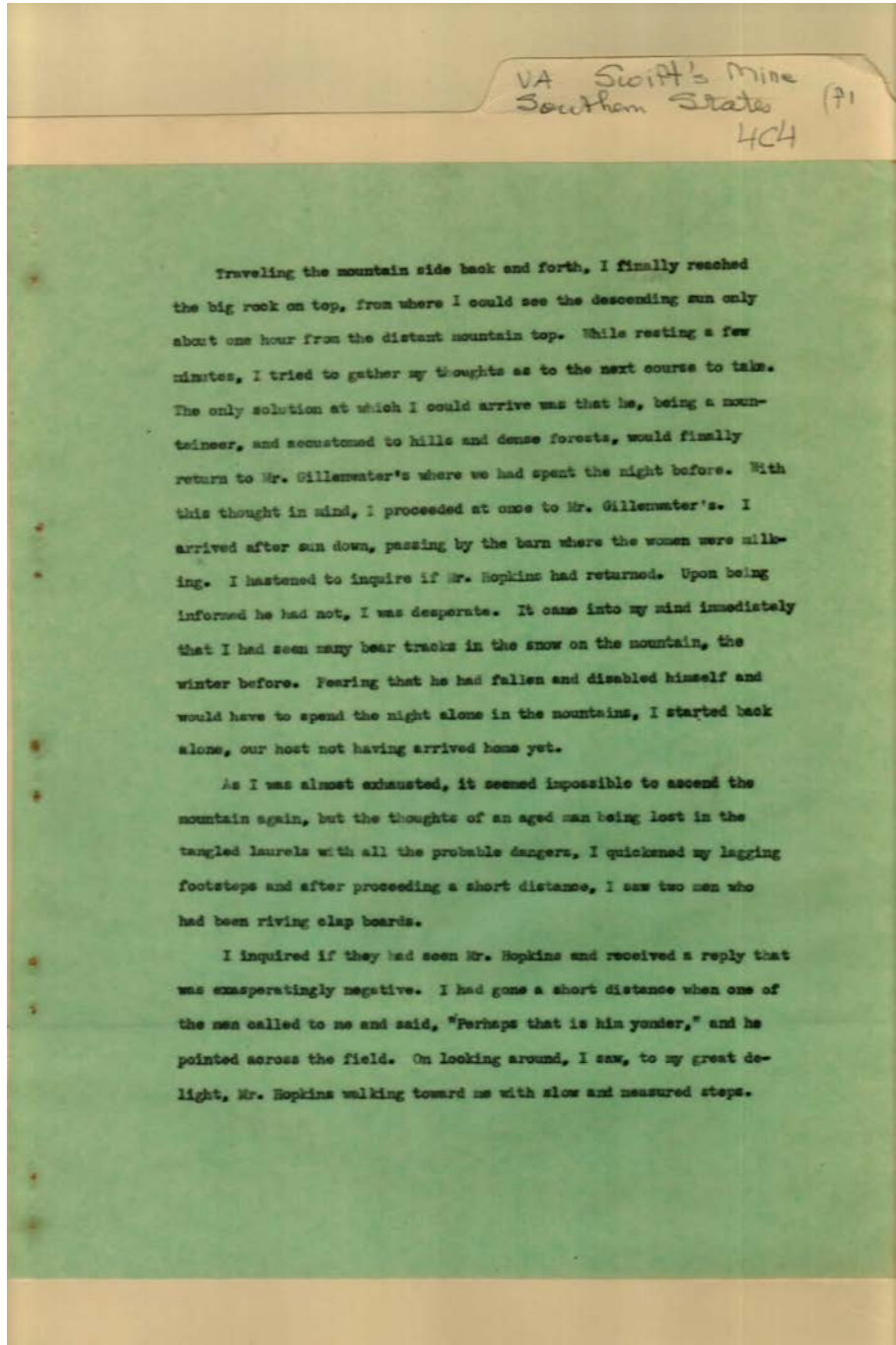
**Names:**

Hopkins,

**Types:**

story





Fictional Story

**Names:**

Gillenwater,

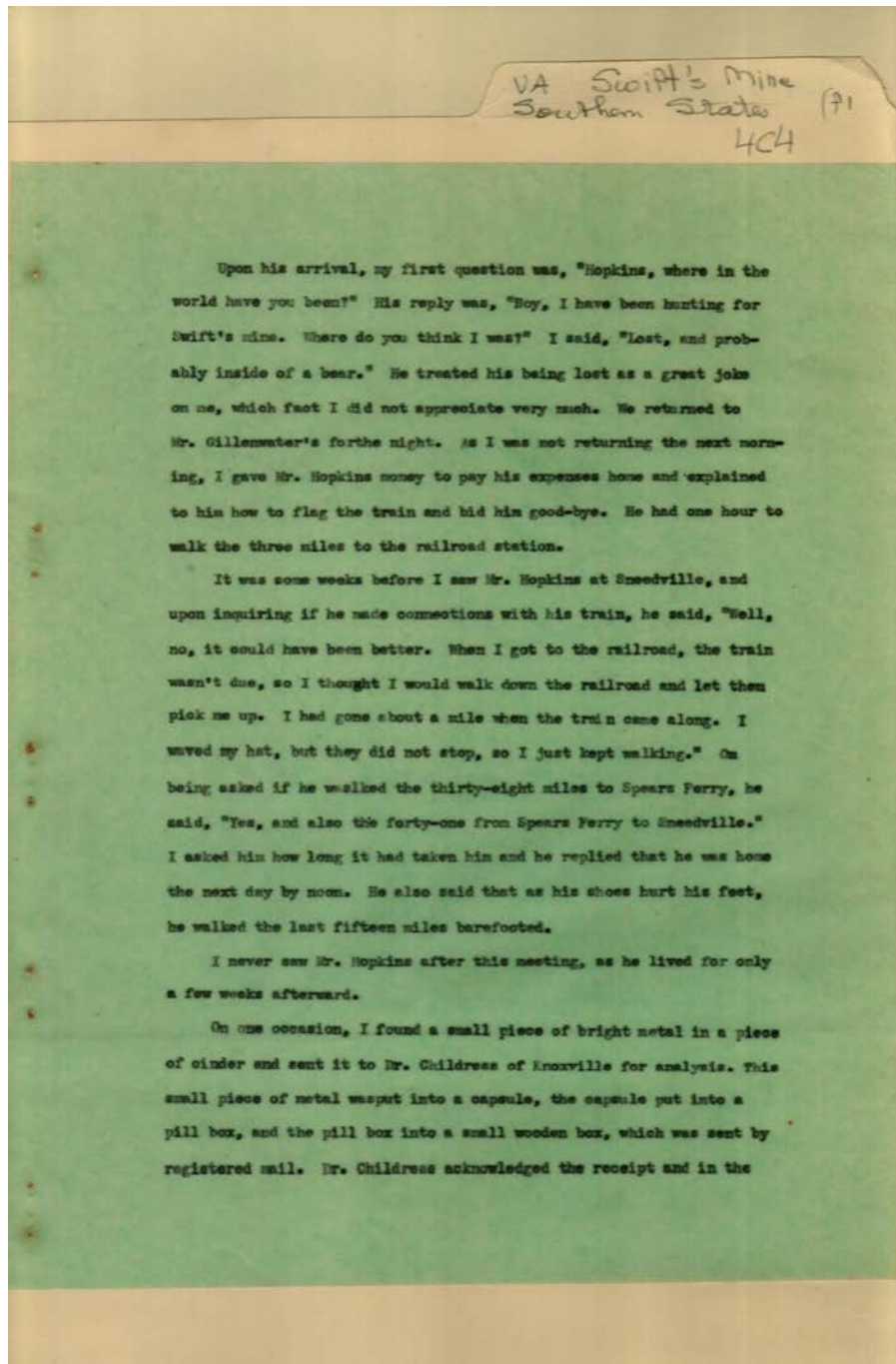
Hopkins,

**Types:**

story

Frances Cabaniss Roberts Collection: Series 4, Subseries C, Box 4, Folder 1  
Virginia, "The Legend of Smith & Monday's Mine" by Daugherty, A.H.

Image 22 r04c04-01-000-0025 [Contents](#) [Index](#) [About](#)



Fictional Story

**Names:**

Childress, Dr.

Gillenwater,

Hopkins,

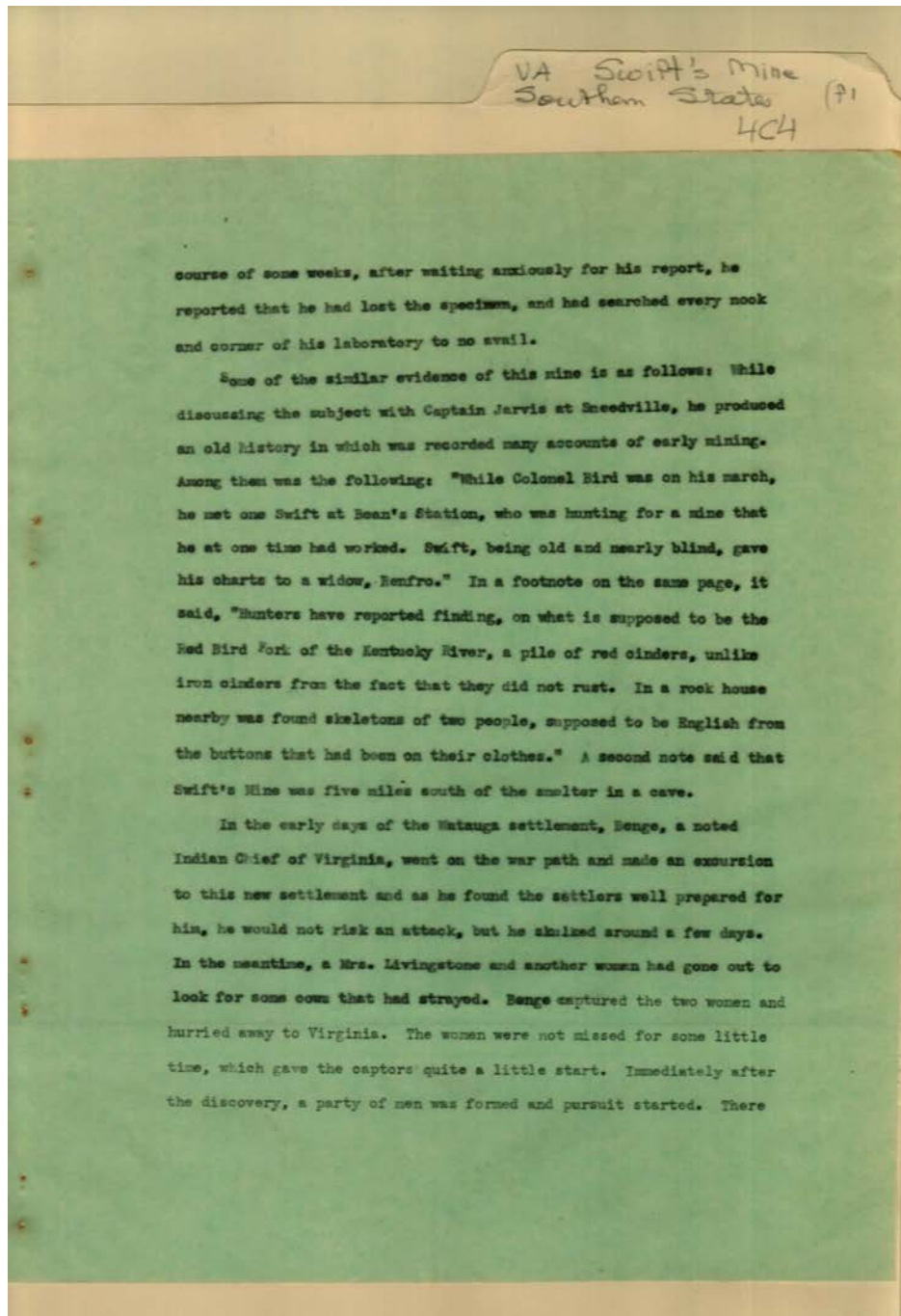
Swift,

**Types:**

story

Frances Cabaniss Roberts Collection: Series 4, Subseries C, Box 4, Folder 1  
Virginia, "The Legend of Smith & Monday's Mine" by Daugherty, A.H.

Image 23 r04c04-01-000-0026 [Contents](#) [Index](#) [About](#)



Fictional Story

**Names:**

Benge, (Indian Chief)  
Bird, Colonel

Jarvis, Captain  
Livingstone, Mrs.

Renfro,  
Swift,

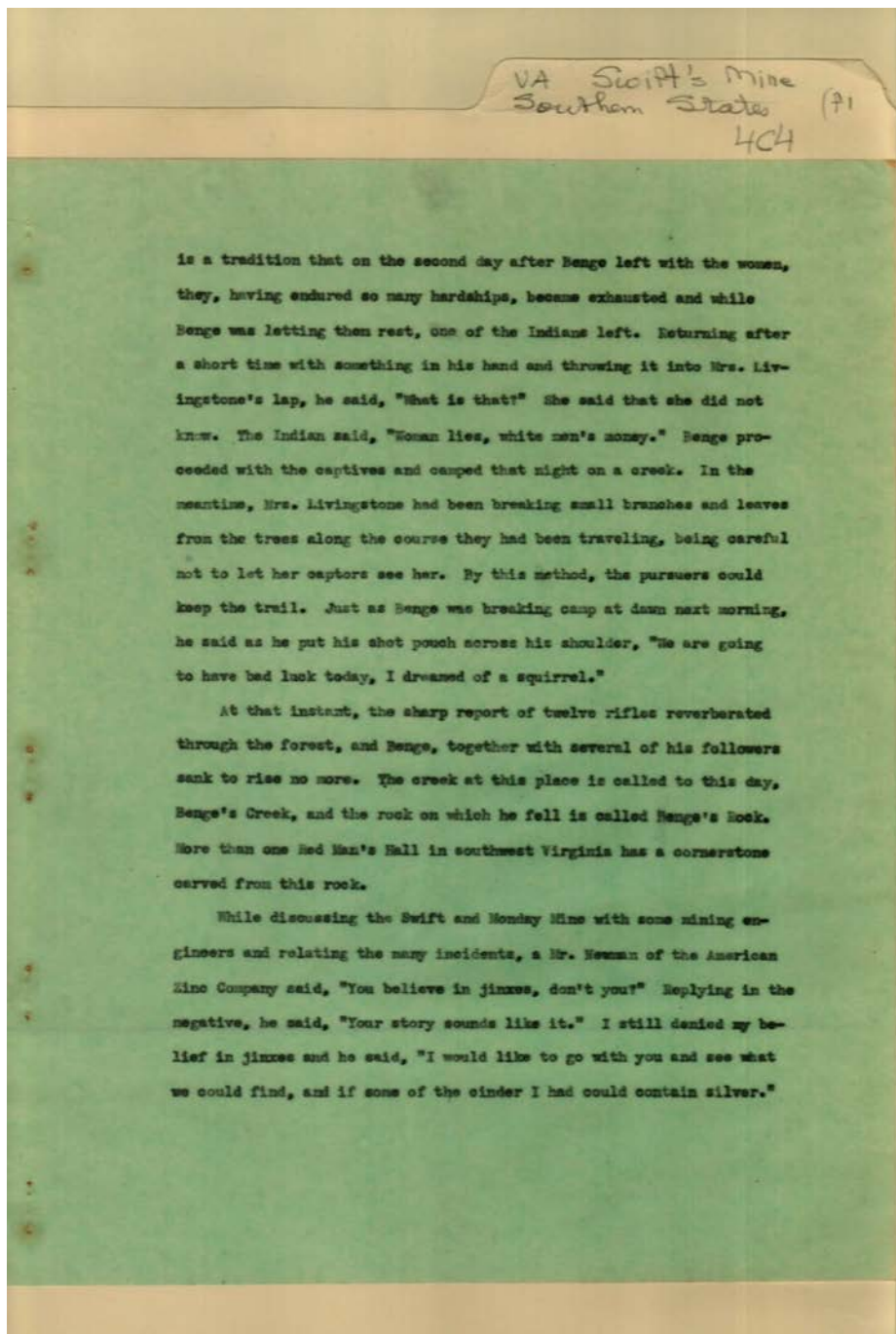
**Types:**

story



Frances Cabaniss Roberts Collection: Series 4, Subseries C, Box 4, Folder 1  
Virginia, "The Legend of Smith & Monday's Mine" by Daugherty, A.H.

Image 24 r04c04-01-000-0027 [Contents](#) [Index](#) [About](#)



Fictional Story

**Names:**

Bengo, (Indian Chief)  
Livingstone, Mrs.

Monday,  
Newman,

Swift,

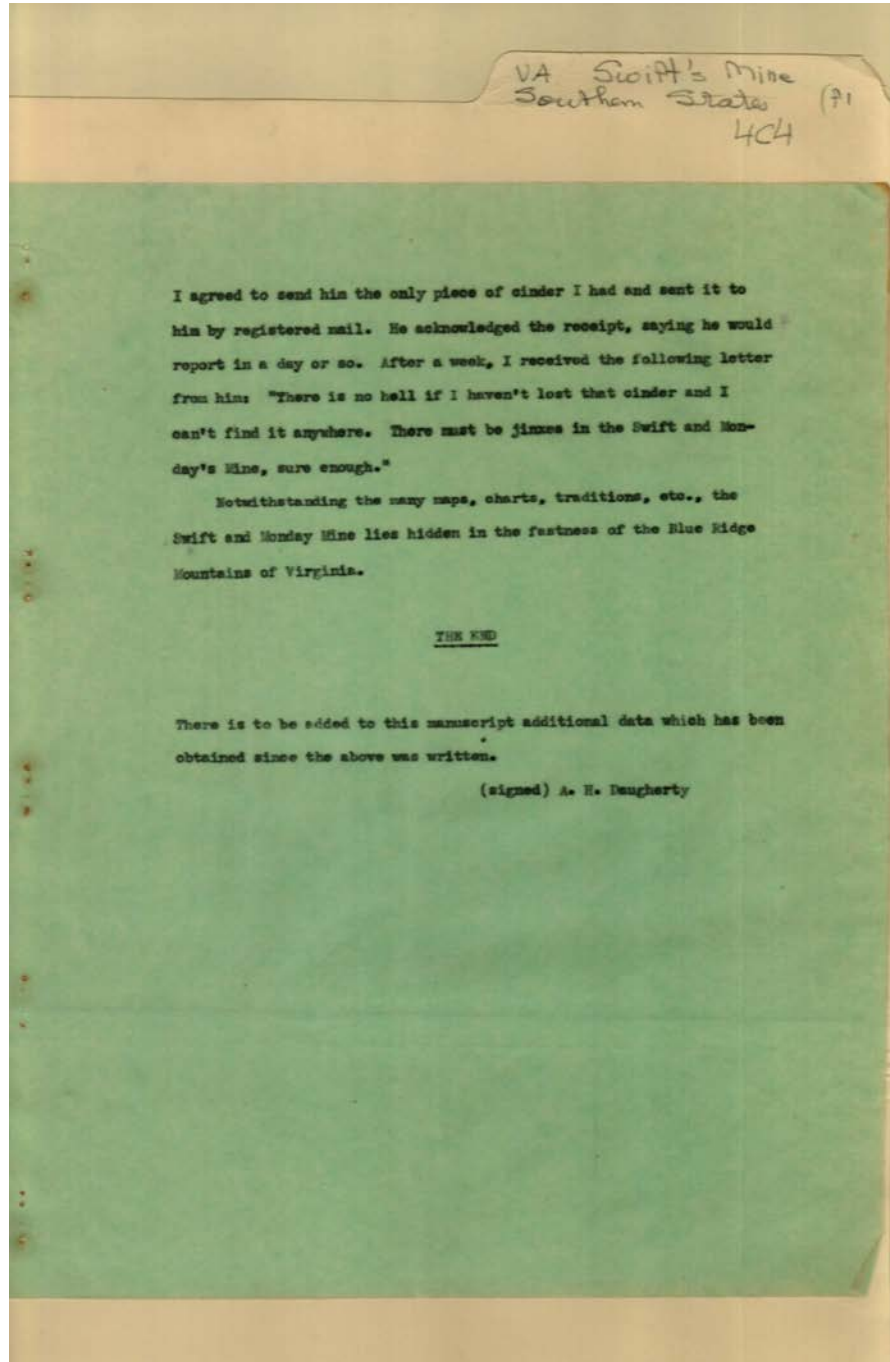
**Types:**

story



Frances Cabaniss Roberts Collection: Series 4, Subseries C, Box 4, Folder 1  
Virginia, "The Legend of Smith & Monday's Mine" by Daugherty, A.H.

Image 25 r04c04-01-000-0028 [Contents](#) [Index](#) [About](#)



Fictional Story

**Names:**

Daugherty, A. H.

Monday,

Swift,

**Types:**

story

**Frances Cabaniss Roberts Collection: Series 4, Subseries C, Box 4, Folder 1  
Virginia, "The Legend of Smith & Monday's Mine" by Daugherty, A.H.**

[Contents](#) [Index](#) [About](#)

**Table of Contents**

[Image 1](#) (r04c04-01-000-0004)

[Image 2](#) (r04c04-01-000-0005)

[Image 3](#) (r04c04-01-000-0006)

[Image 4](#) (r04c04-01-000-0007)

[Image 5](#) (r04c04-01-000-0008)

[Image 6](#) (r04c04-01-000-0009)

[Image 7](#) (r04c04-01-000-0010)

[Image 8](#) (r04c04-01-000-0011)

[Image 9](#) (r04c04-01-000-0012)

[Image 10](#) (r04c04-01-000-0013)

[Image 11](#) (r04c04-01-000-0014)

[Image 12](#) (r04c04-01-000-0015)

[Image 13](#) (r04c04-01-000-0016)

[Image 14](#) (r04c04-01-000-0017)

[Image 15](#) (r04c04-01-000-0018)

[Image 16](#) (r04c04-01-000-0019)

[Image 17](#) (r04c04-01-000-0020)

[Image 18](#) (r04c04-01-000-0021)

[Image 19](#) (r04c04-01-000-0022)

[Image 20](#) (r04c04-01-000-0023)

[Image 21](#) (r04c04-01-000-0024)

[Image 22](#) (r04c04-01-000-0025)

[Image 23](#) (r04c04-01-000-0026)

[Image 24](#) (r04c04-01-000-0027)

[Image 25](#) (r04c04-01-000-0028)

[Table of Contents](#)

[Name & Place Index](#)

[About the Collection](#)

Frances Cabaniss Roberts Collection: Series 4, Subseries C, Box 4, Folder 1  
Virginia, "The Legend of Smith & Monday's Mine" by Daugherty, A.H.

[Contents](#) [Index](#) [About](#)

## Name & Place Index

, Lewis [16](#), [17](#), [18](#)  
A. J. H. [17](#)  
Benge, (Indian Chief) [23](#), [24](#)  
Bienville, [4](#)  
Bird, Colonel [23](#)  
Blue Ridge Mtns [2](#)  
Boatwright, [3](#)  
Cartwright, Mary [5](#), [6](#), [10](#)  
Childress, Dr. [22](#)  
Crusoe, Robinson [3](#)  
Daugherty, A. H. [25](#)  
Dougherty, W. A. [3](#)  
Fictional Story [17](#)  
Gillenwater, [21](#), [22](#)  
Greer, [11](#), [12](#)  
Grover, T. [12](#)  
Grover, Thomas [13](#)  
Grust, [13](#)  
Hopkins, Lewis [14](#)  
Hopkins, [15](#), [16](#), [17](#), [19](#), [20](#), [21](#), [22](#)  
Horton, [17](#), [18](#)  
Jarvis, Captain [15](#), [19](#), [23](#)  
Jefferson, [13](#)  
Legend of the Swift's & Monday's Mine [1](#), [2](#)  
Livingstone, Mrs. [23](#), [24](#)  
man's initials [17](#)  
Marquette, Leon Debyronas [4](#), [9](#)  
Marquette, Leon [6](#)  
Marquette, [7](#), [8](#)  
Monday, John Martin [5](#)  
Monday, John [6](#)  
Monday, [11](#), [13](#), [14](#), [15](#), [18](#), [24](#), [25](#)  
Munday, John Martin [10](#)  
Newman, [24](#)  
R. H. B. [17](#)  
Renfro, [23](#)  
Swift & Monday Mine [3](#)  
Swift, George W. [6](#)  
Swift, George William [4](#), [10](#)  
Swift, William [4](#)  
Swift, [11](#), [13](#), [15](#), [16](#), [18](#), [22](#), [23](#), [24](#), [25](#)

# Frances Cabaniss Roberts Collection

**Preferred Citation:** Frances Cabaniss Roberts Collection, Archives and Special Collections, M. Louis Salmon Library, University of Alabama in Huntsville, Huntsville, AL.

**Collection Scope and Content:** The Collection of 114 Linear ft. includes a total of 156 Archival Boxes. The Frances Cabaniss Roberts collection covers the historical records of the Cabaniss Roberts family. This collection contains extensive correspondence records of the Cabaniss Roberts family circa 1830 to 1930.

**Archives/Special Collections Access Restrictions:** None

**Conditions Governing Use:** This material may be protected under U. S. Copyright Law (Title 17, U.S. Code) which governs the making of photocopies or reproductions of copyrighted materials. You may use the digitized material for private study, scholarship, or research. Though the University of Alabama in Huntsville Archives and Special Collections has physical ownership of the material in its collections, in some cases we may not own the copyright to the material. It is the patron's obligation to determine and satisfy copyright restrictions when publishing or otherwise distributing materials found in our collections.

**Provenance:** Gift of Johanna Shields on October 28, 2006.



THE UNIVERSITY OF  
ALABAMA IN HUNTSVILLE

**The UAH Archives and Special Collections  
M. Louis Salmon Library**