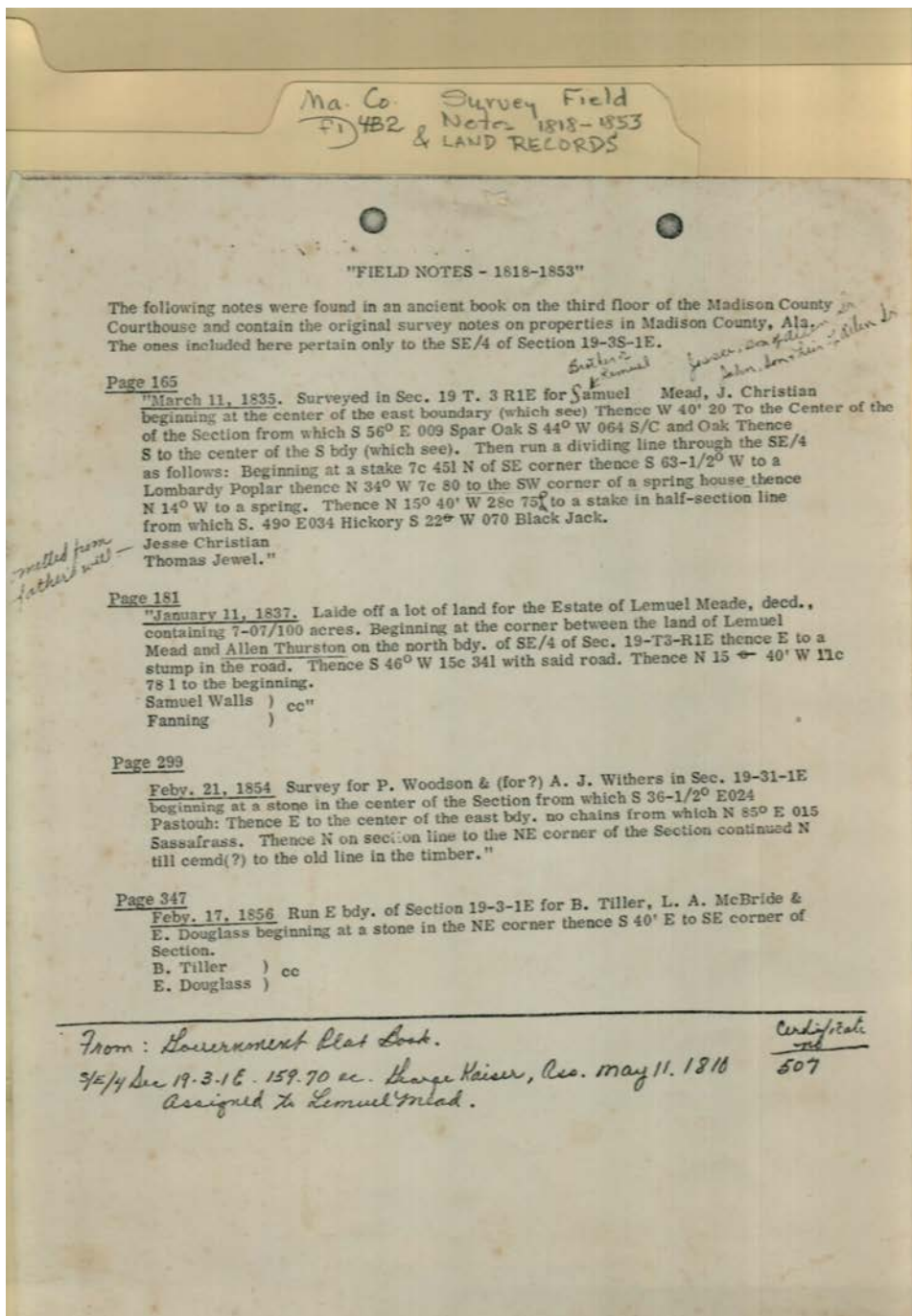


Frances Cabaniss Roberts Collection: Series 4, Subseries B, Box 2, Folder 1
 Survey Field Notes & Land Records, 1818 - 1853

Image 1 r04b02-01-000-0005 [Contents](#) [Index](#) [About](#)



Names:

Christian, Jesse
 Christian, John
 Douglass, E.
 Fanning,
 Field Notes 1818-
 1823

Government Plat
 Book
 Jewel, Thomas
 Kaiser, George
 McBride, L. A.
 Mead, Remuel

Mead, Samuel
 Meade, Lemuel
 Original Survey
 Notes
 Thurston, Allen
 Tiller, B.

Walls, Samuel
 Withers, A. J.
 Woodson, P.

Places:

Madison County, AL

Types:

booklet

Dates:

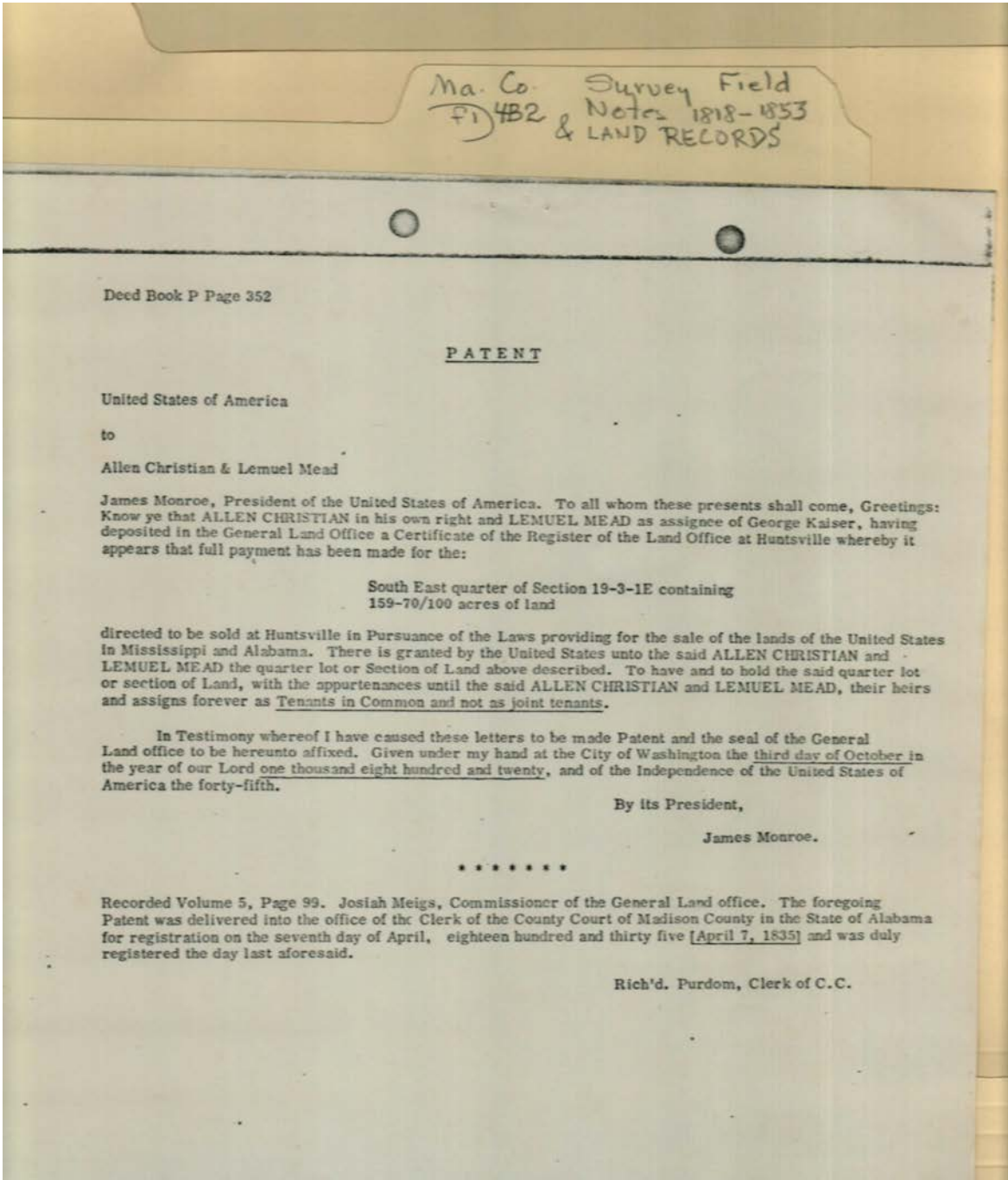
1818-1823

Feb 17, 1856

Feb 21, 1854

Jan 11, 1837

Mar 11, 1835



Names:

Christian, Allen
Kaiser, George
Mead, Lemuel

Meigs, Josiah
Monroe, James,
President

Patent
Purdom, Richard,
(clerk)

United States of
America

Places:

Madison County, AL

Types:

deed book

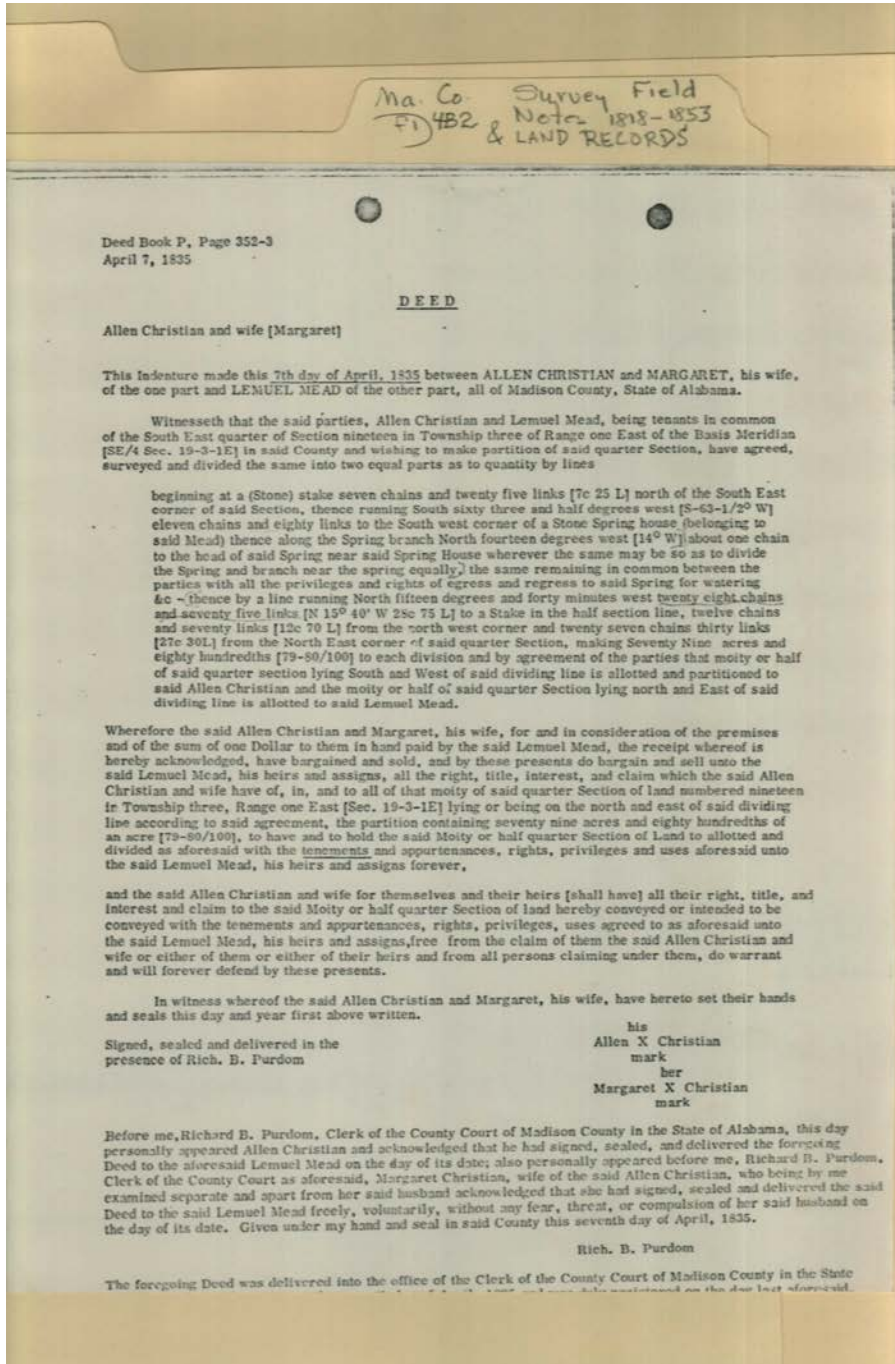
Dates:

Oct 30, 1820

Frances Cabaniss Roberts Collection: Series 4, Subseries B, Box 2, Folder 1

Survey Field Notes & Land Records, 1818 - 1853

Image 3 r04b02-01-000-0007 [Contents](#) [Index](#) [About](#)



Names:

Christian, Allen
Christian, Margaret

Mead, Lemuel

Purdom, Richard,
(clerk)

Places:

Madison County, AL

Types:

deed

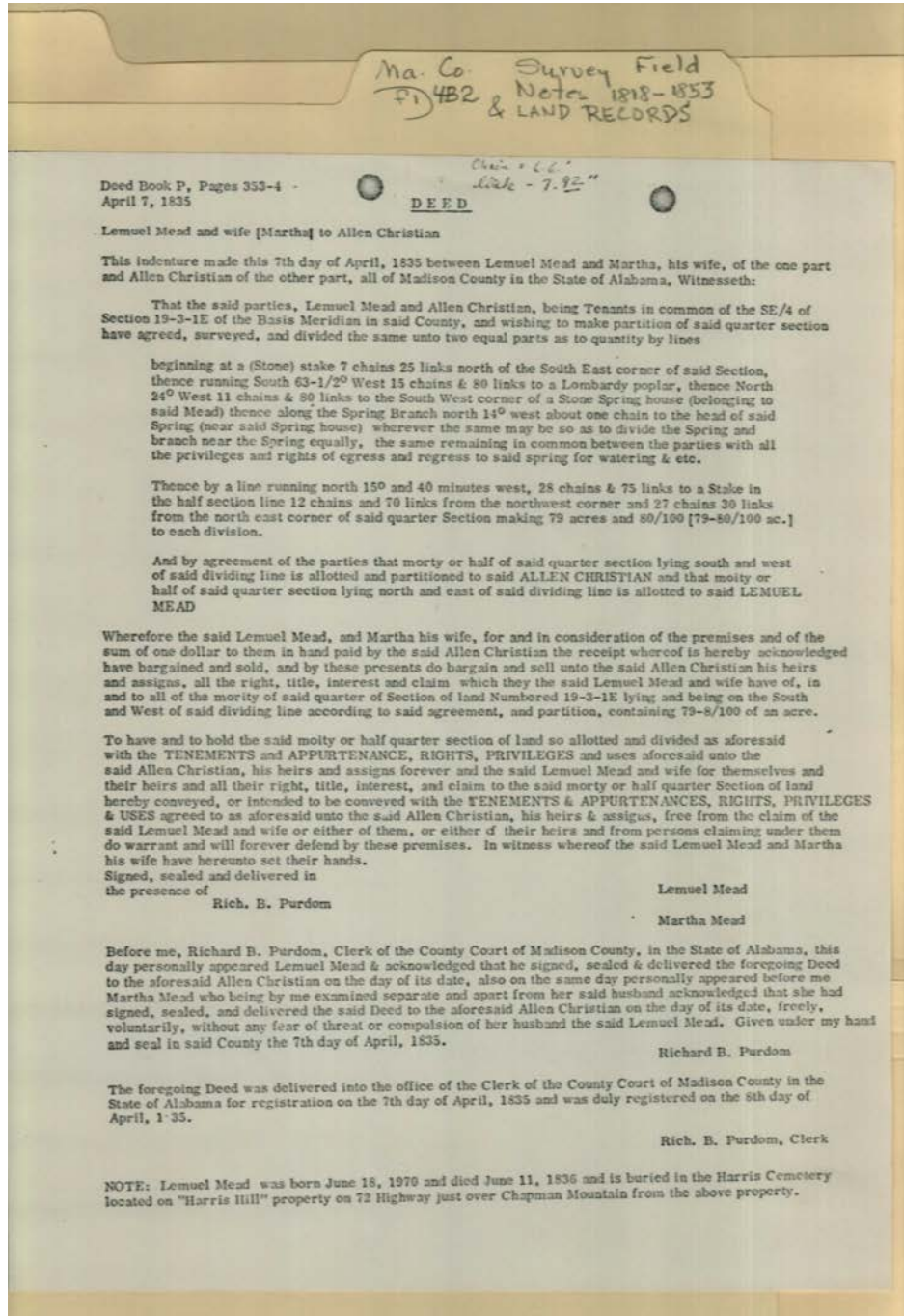
Dates:

Apr 07, 1835

Frances Cabaniss Roberts Collection: Series 4, Subseries B, Box 2, Folder 1

Survey Field Notes & Land Records, 1818 - 1853

Image 4 r04b02-01-000-0008 [Contents](#) [Index](#) [About](#)



Names:

Christian, Allen
Harris Hill Cemetery

Mead, Lemuel
Mead, Martha

Purdom, Richard,
(clerk)

Places:

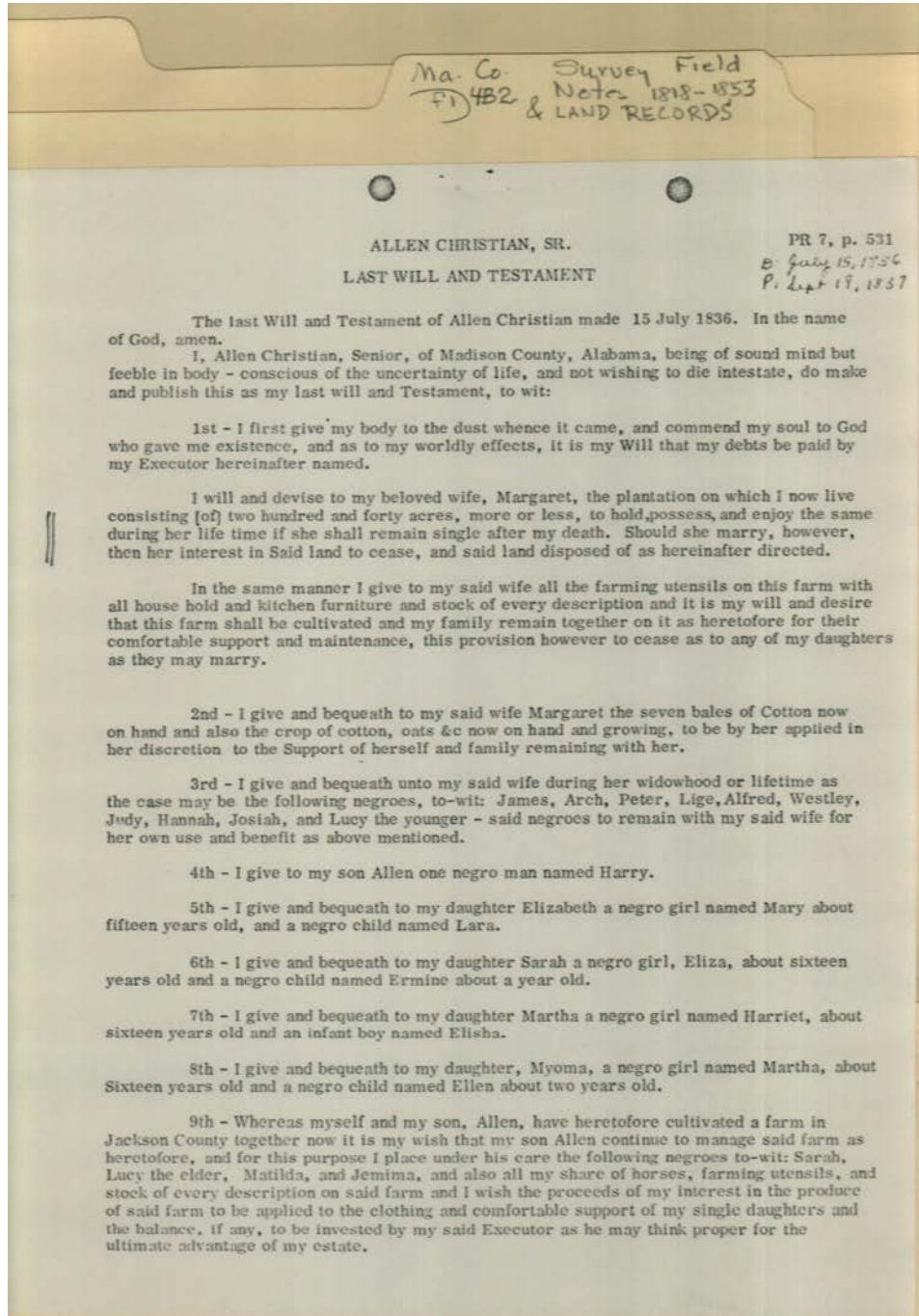
Madison County, AL

Types:

deed

Dates:

Apr 07, 1835



Names:

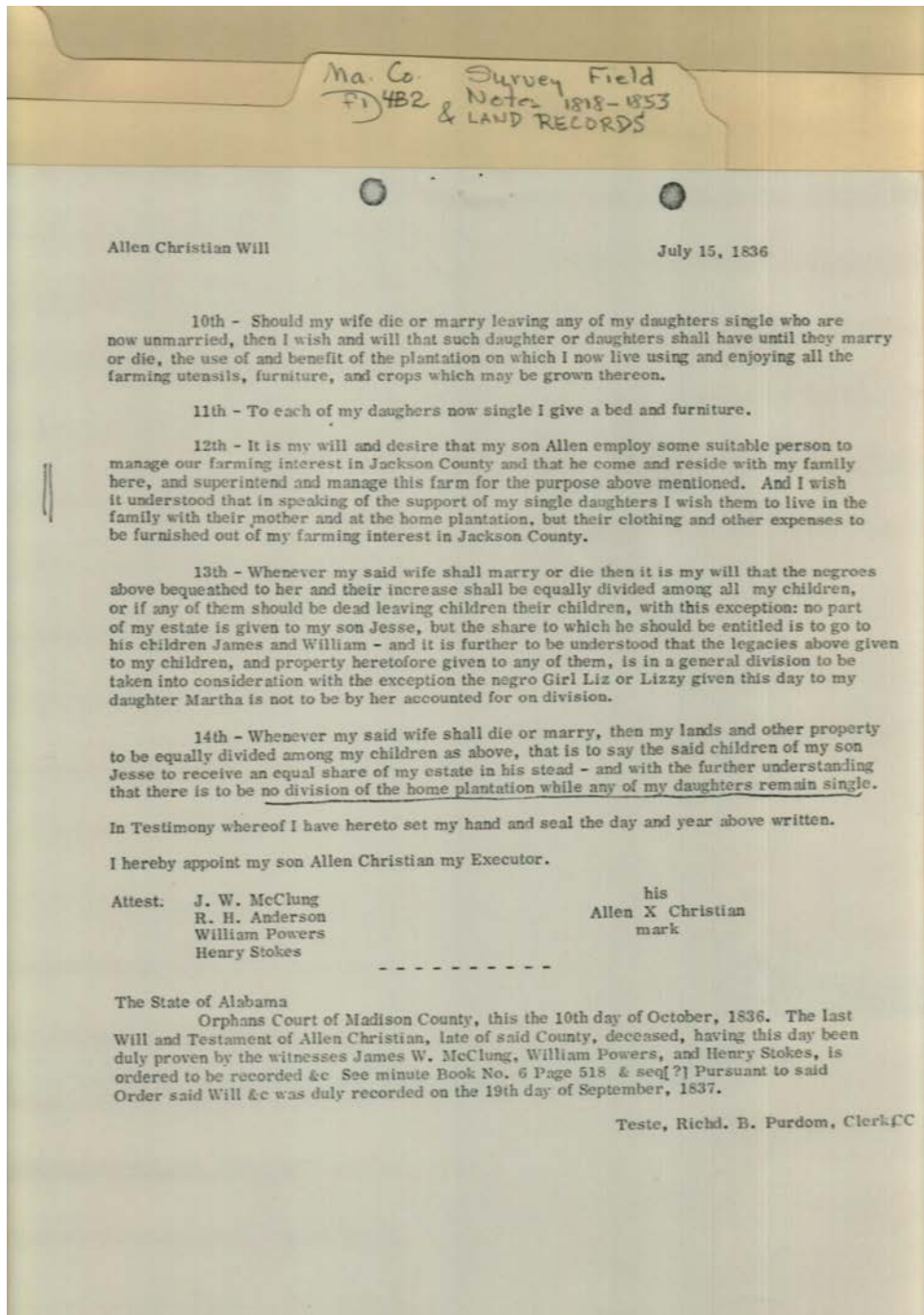
- | | | | |
|-------------------|---------------------------|-----------------------------|-----------------------|
| , Alfred (slave) | , James (slave) | , Lucy, the younger (slave) | Christian, Allen, Sr. |
| , Arch (slave) | , Jemima (slave) | , Martha (slave) | Christian, Elizabeth |
| , Elisha (slave) | , Josiah (slave) | , Mary (slave) | Christian, Margaret |
| , Eliza (slave) | , Judy (slave) | , Matilda (slave) | Christian, Martha |
| , Ellen (slave) | , Lara (slave) | , Peter (slave) | Christian, Myoma |
| , Ermine (slave) | , Lige (slave) | , Sarah (slave) | Christian, Sarah |
| , Hannah (slave) | , Lucy, the elder (slave) | , Westley (slave) | |
| , Harriet (slave) | | Christian, Allen, Jr. | |
| , Harry (slave) | | | |

Places:

Madison County, AL

Types:
will

Dates:
Jul 15, 1836



Names:

, Liz (slave)	Christian, James	McClung, J. W.	Purdom, Richard,
, Lizzy (slave)	Christian, Jesse	Orphans Court	(clerk)
Anderson, R. H.	Christian, Martha	Powers, William	Stokes, Henry
Christian, Allen	Christian, William		

Places:

Madison County, AL

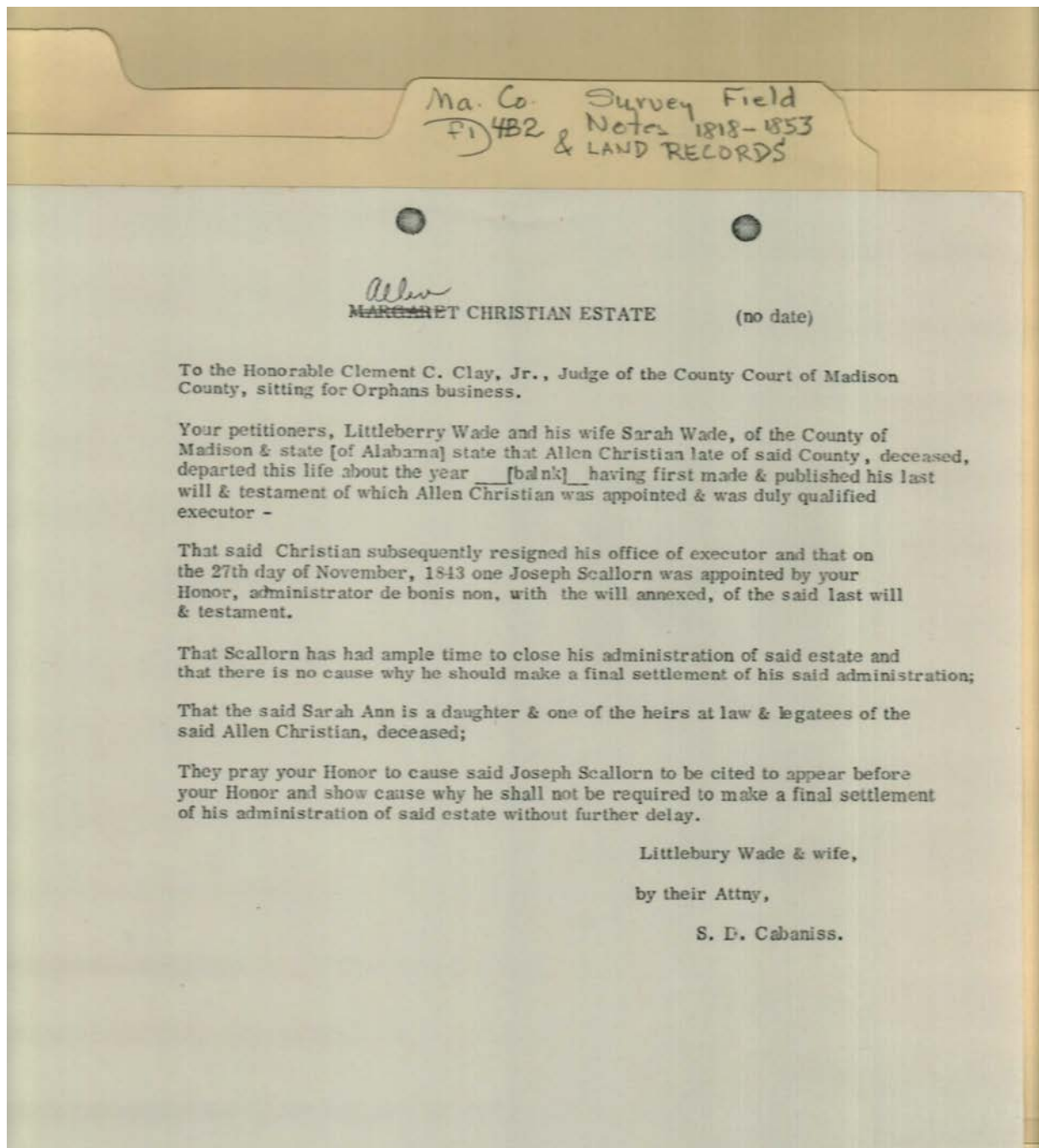
Types:

will

Dates:

Jul 15, 1836

Oct 10, 1836



Names:

Cabaniss, S. D.
Christian, Allen

Clay, Clement C., Jr.
(Judge)

Scallorn, Joseph
Wade, Littleberry

Wade, Sarah Ann

Places:

Madison County, AL

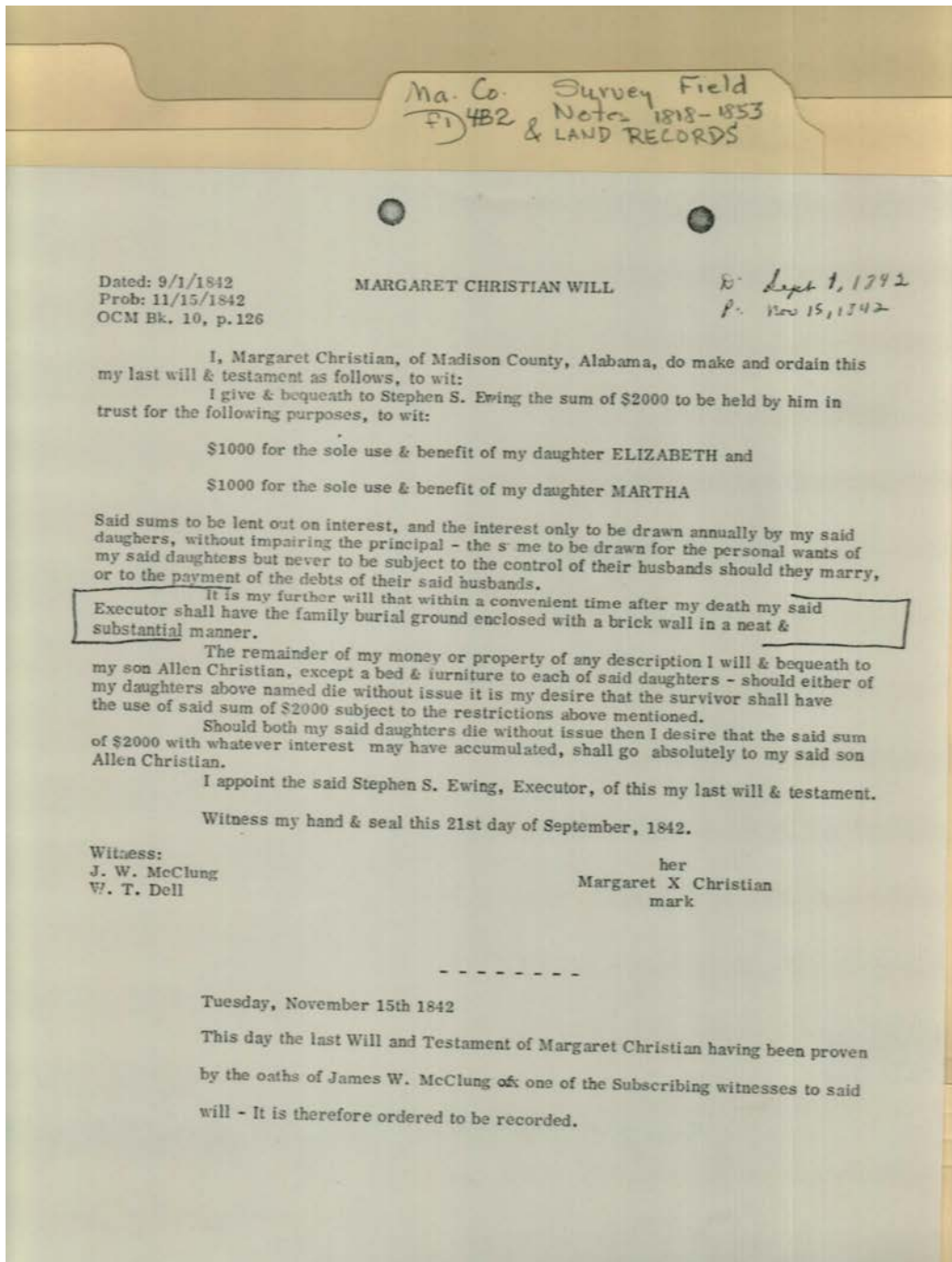
Types:

petition

Frances Cabaniss Roberts Collection: Series 4, Subseries B, Box 2, Folder 1

Survey Field Notes & Land Records, 1818 - 1853

Image 8 r04b02-01-000-0012 [Contents](#) [Index](#) [About](#)



Names:

Christian, Allen, Jr.
Christian, Elizabeth

Christian, Margaret
Christian, Martha

Dell, W. T.
Ewing, Stephen S.

McClung, J. W.
Will Recorded

Places:

Madison County, AL

Types:

will

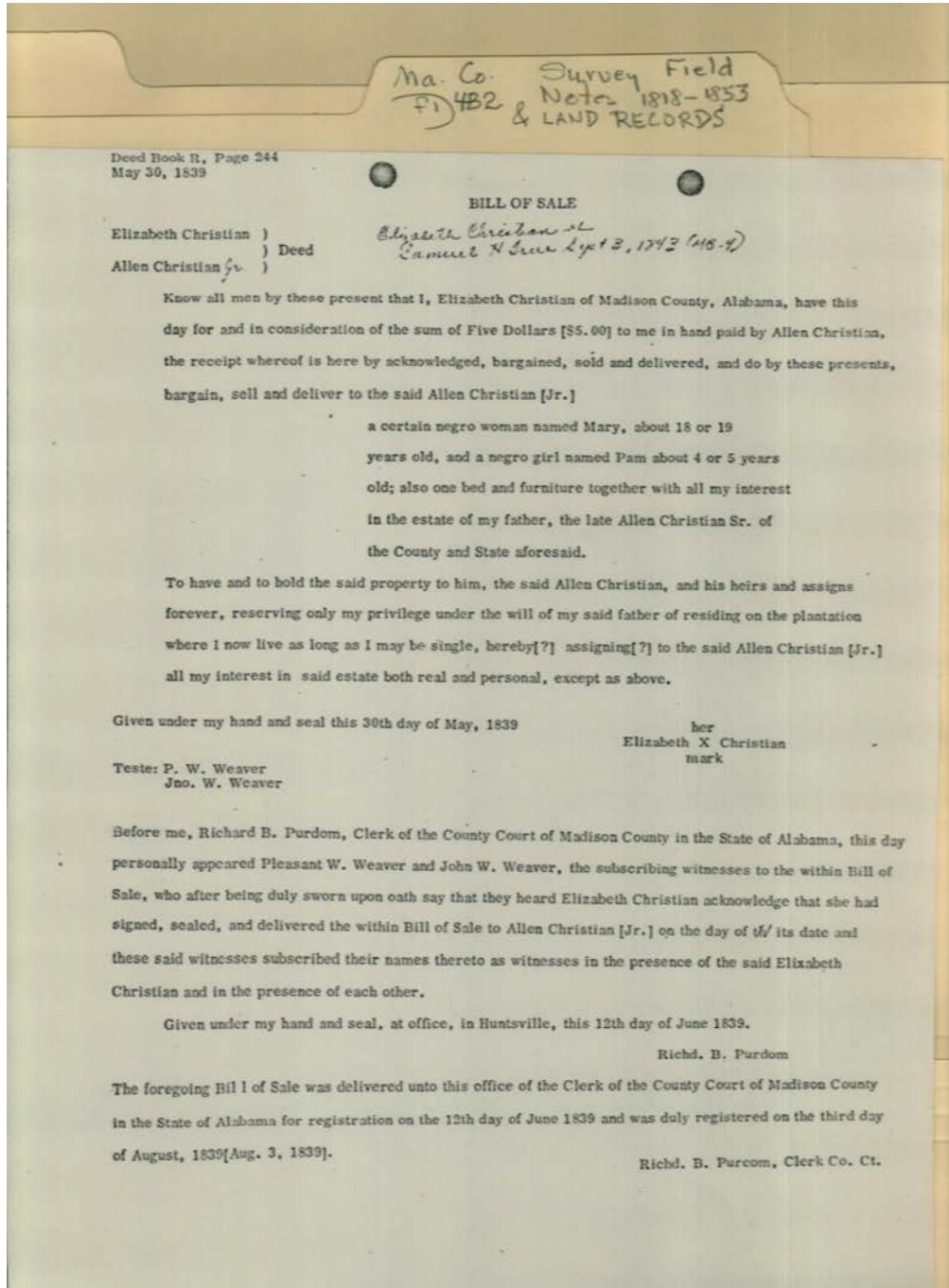
Dates:

Nov 15, 1842

Sep 21, 1842

Frances Cabaniss Roberts Collection: Series 4, Subseries B, Box 2, Folder 1
Survey Field Notes & Land Records, 1818 - 1853

Image 9 r04b02-01-000-0013 [Contents](#) [Index](#) [About](#)



Names:

, Mary (slave)

, Pam (slave)

Christian, Allen, Jr.

Christian, Elizabeth

Purdom, Richard,

(Clerk)

Weaver, John W.

Weaver, Pleasant W.

Places:

Madison County, AL

Types:

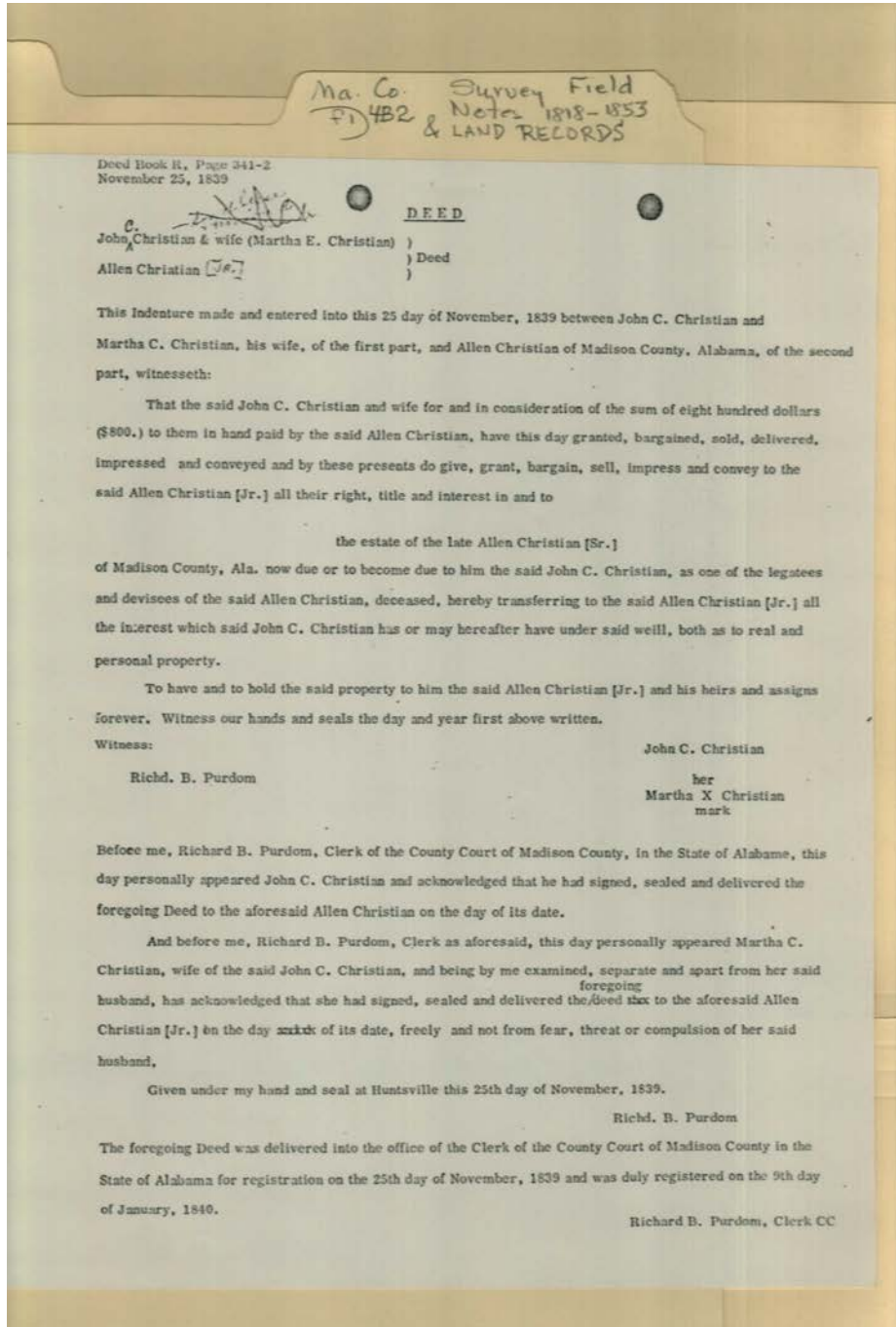
receipt

Dates:

May 30, 1839

Frances Cabaniss Roberts Collection: Series 4, Subseries B, Box 2, Folder 1
Survey Field Notes & Land Records, 1818 - 1853

Image 10 r04b02-01-000-0014 [Contents](#) [Index](#) [About](#)



Names:

Christian, Allen, Jr.
Christian, Allen, Sr.

Christian, John C.
Christian, Martha E.

Purdom, Richard,
(clerk)

Places:

Madison County, AL

Types:

deed

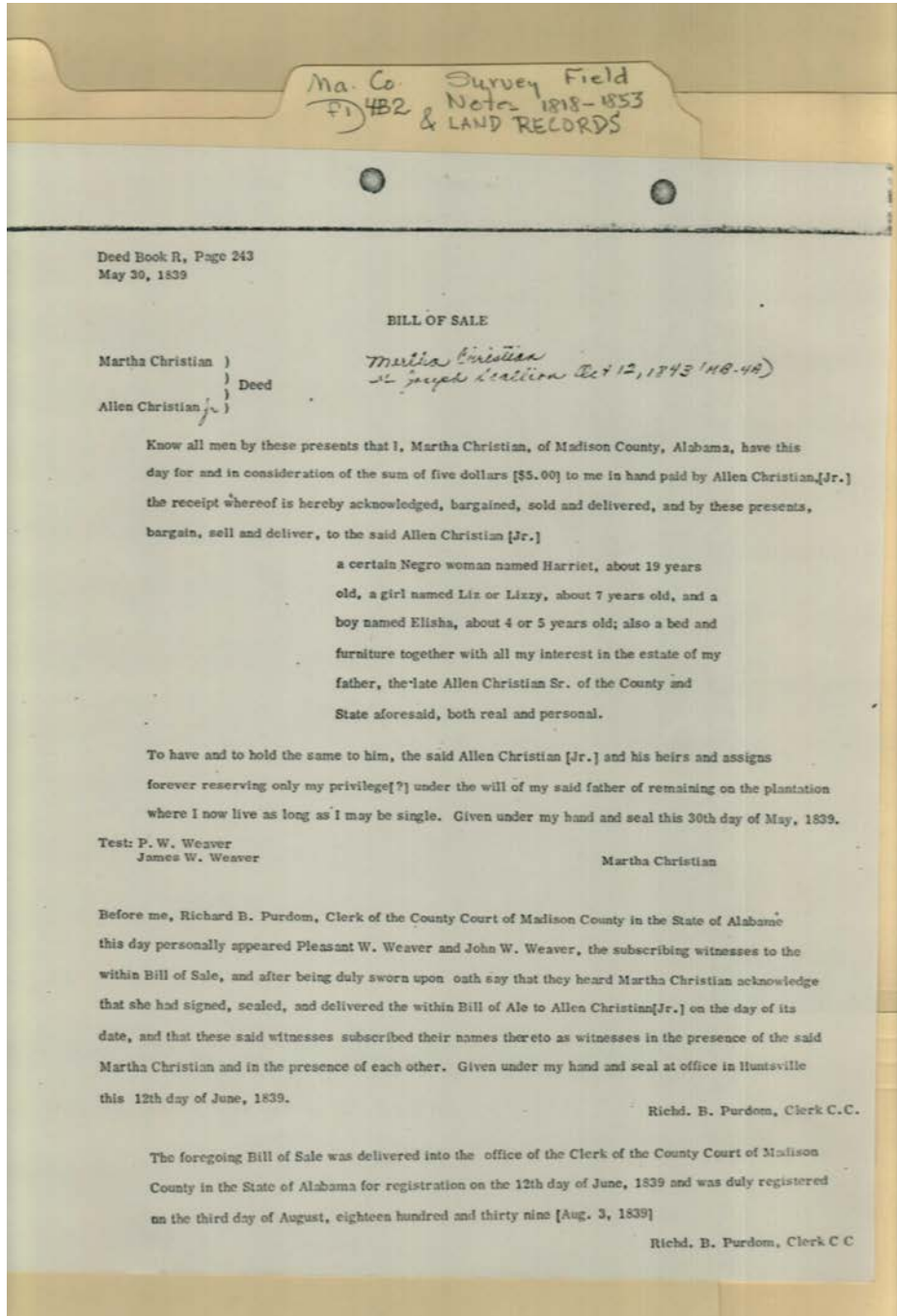
Dates:

Nov 25, 1839

Frances Cabaniss Roberts Collection: Series 4, Subseries B, Box 2, Folder 1

Survey Field Notes & Land Records, 1818 - 1853

Image 11 r04b02-01-000-0015 [Contents](#) [Index](#) [About](#)



Names:

, Elisha (slave)
, Harriet (slave)
, Liz (slave)

Christian, Allen, Jr.
Christian, Allen, Sr.
Christian, Martha

Purdom, Richard,
(clerk)
Weaver, James W.

Weaver, P. W.

Places:

Madison County, AL

Types:

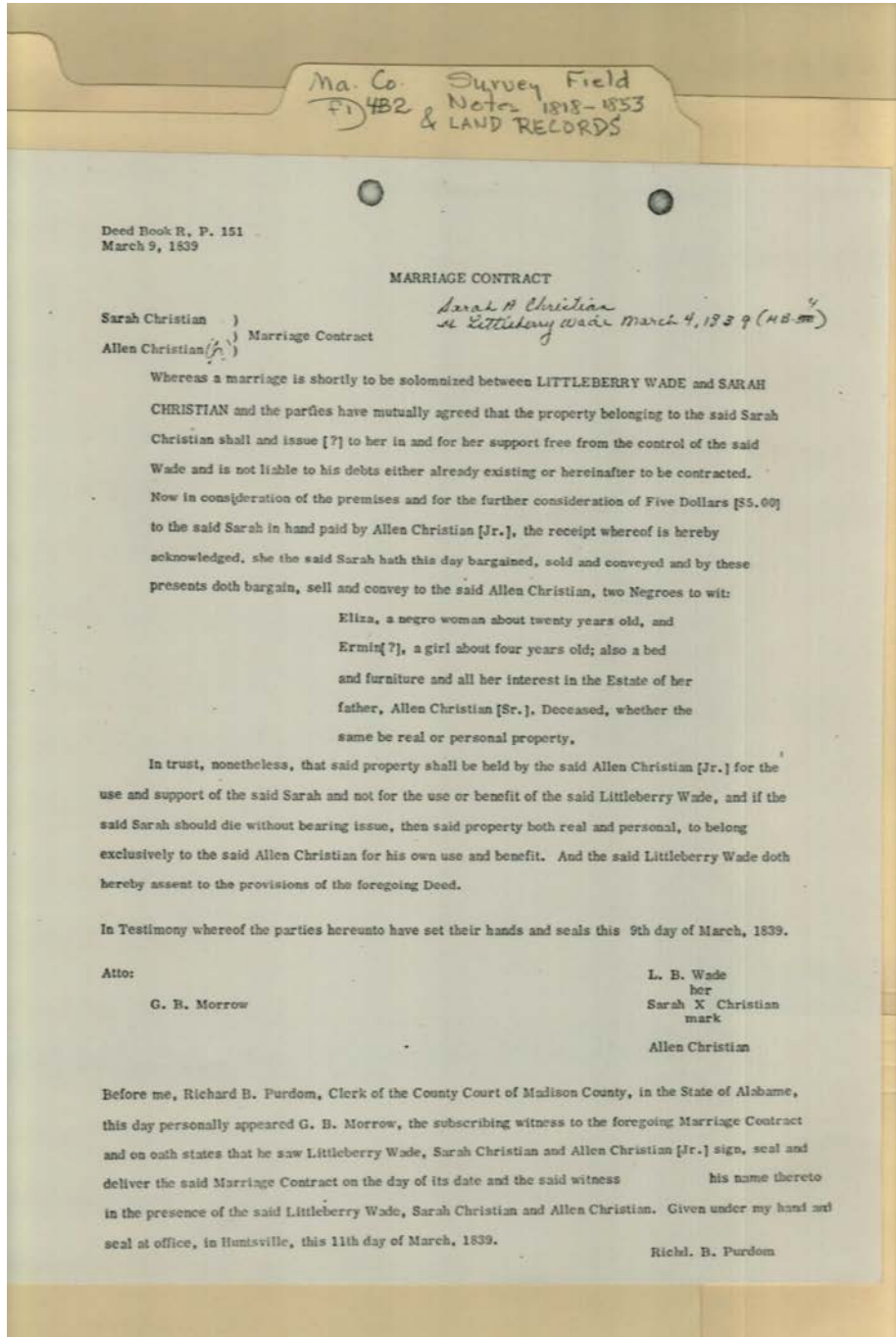
receipt

Dates:

May 30, 1839

Frances Cabaniss Roberts Collection: Series 4, Subseries B, Box 2, Folder 1
Survey Field Notes & Land Records, 1818 - 1853

Image 12 r04b02-01-000-0016 [Contents](#) [Index](#) [About](#)



Names:

, Eliza (slave)
, Ermine (slave)

Christian, Allen, Jr.
Christian, Allen, Sr.

Christian, Sarah A.
Morrow, G. B.

Wade, Littleberry

Types:

marriage

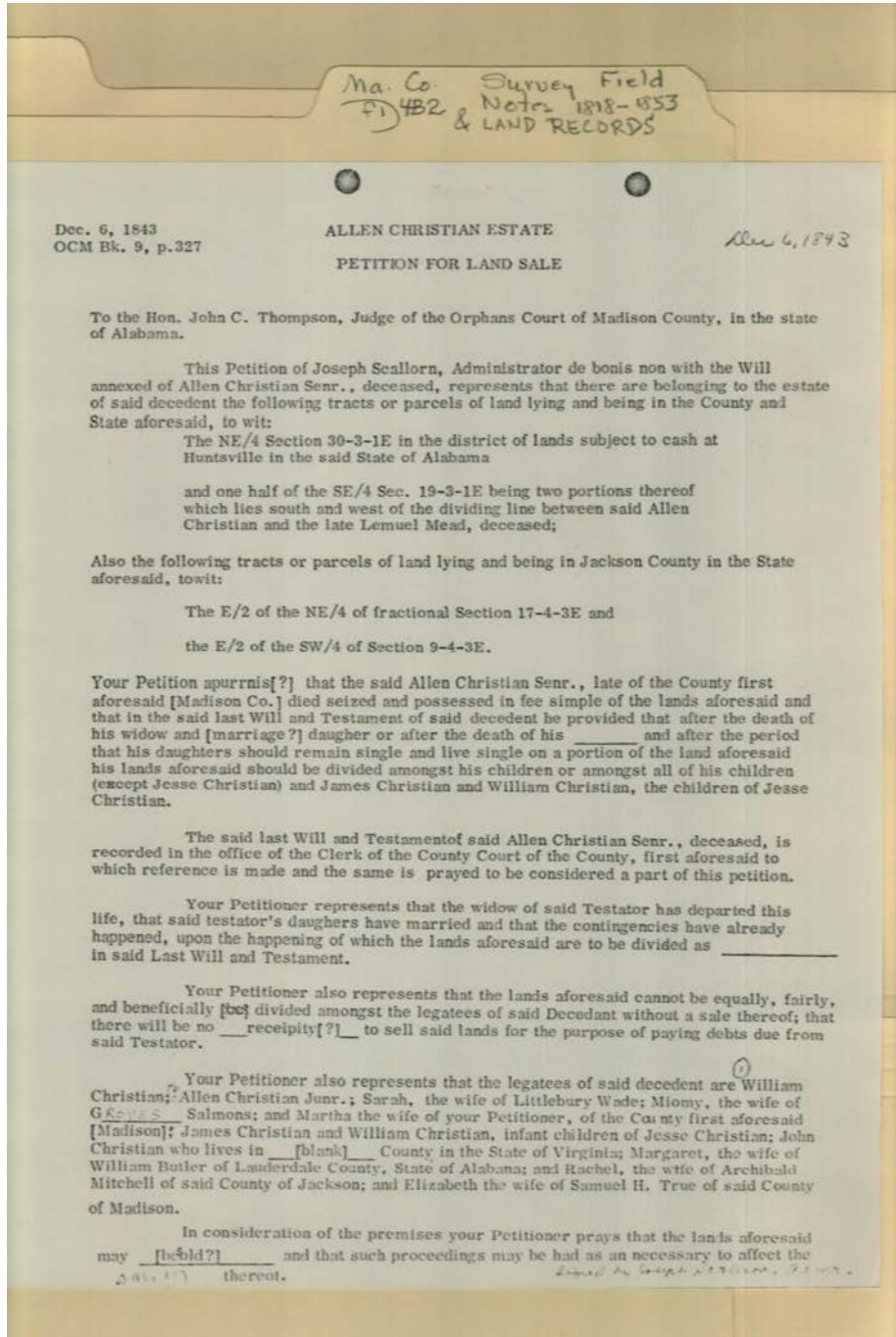
Dates:

Mar 09, 1839

Frances Cabaniss Roberts Collection: Series 4, Subseries B, Box 2, Folder 1

Survey Field Notes & Land Records, 1818 - 1853

Image 13 r04b02-01-000-0017 [Contents](#) [Index](#) [About](#)



Names:

- | | | | |
|-----------------------|---------------------|-------------------|-----------------|
| Butler, Margaret | Christian, Jesse | Salmons, Groves | True, Elizabeth |
| Christian | Christian, John | Salmons, Miomy | Christian |
| Butler, William | Christian, William | Christian | True, Samuel H. |
| Christian, Allen, Jr. | Mitchell, Archibald | Scallorn, Joseph | Wade, Sarah |
| Christian, Allen, Sr. | Mitchell, Rachel | Thompson, John C. | Christian |
| Christian, James | Christian | (judge) | |

Places:

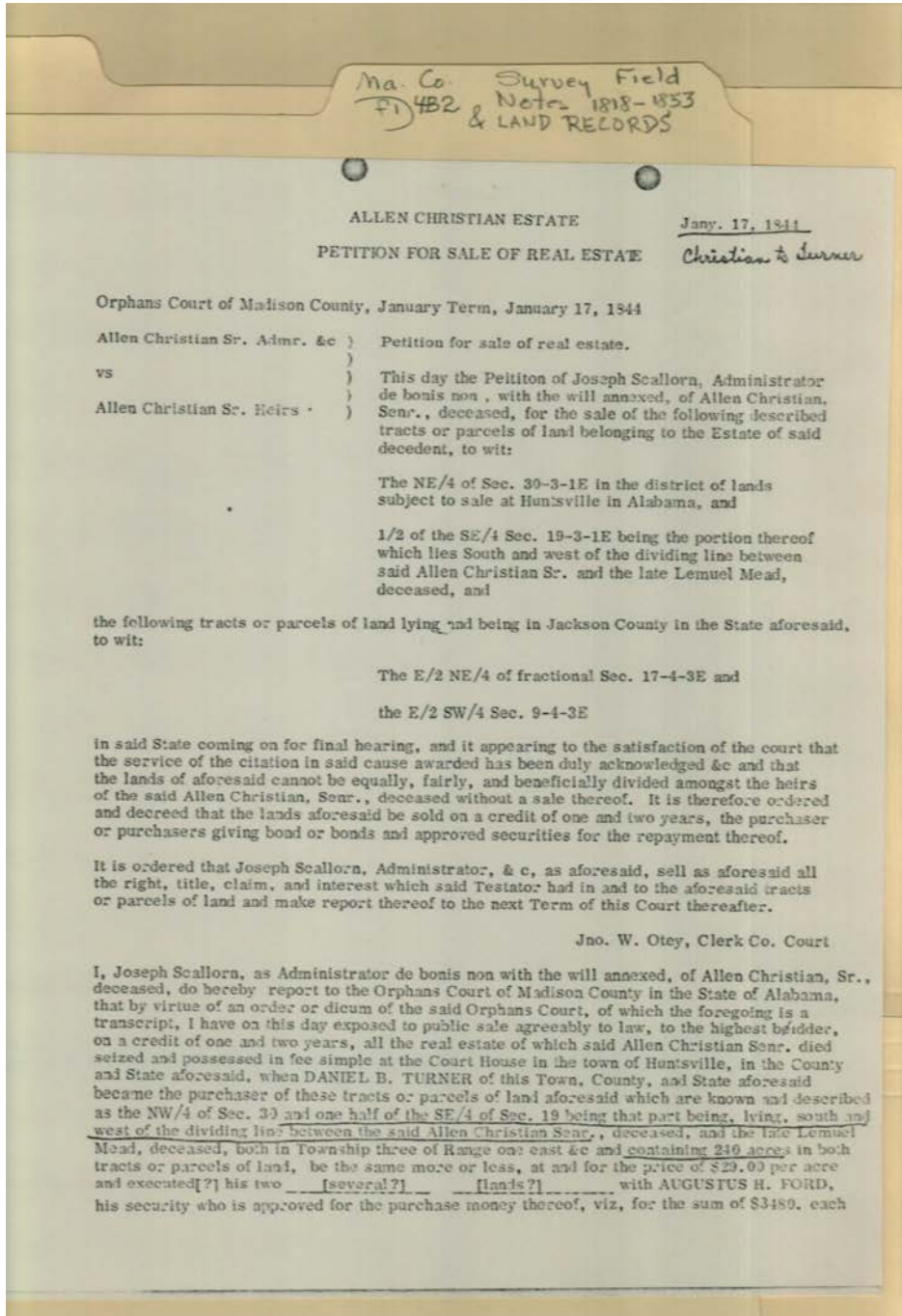
Madison County, AL

Types:

petition

Dates:

Dec 06, 1843



Names:

Christian, Allen, Sr.
Ford, Augustus H.

Mead, Lemuel
Otey, John W. (Clerk)

Scallorn, Joseph
Turner, Daniel B.

Places:

Madison County, AL

Types:

petition

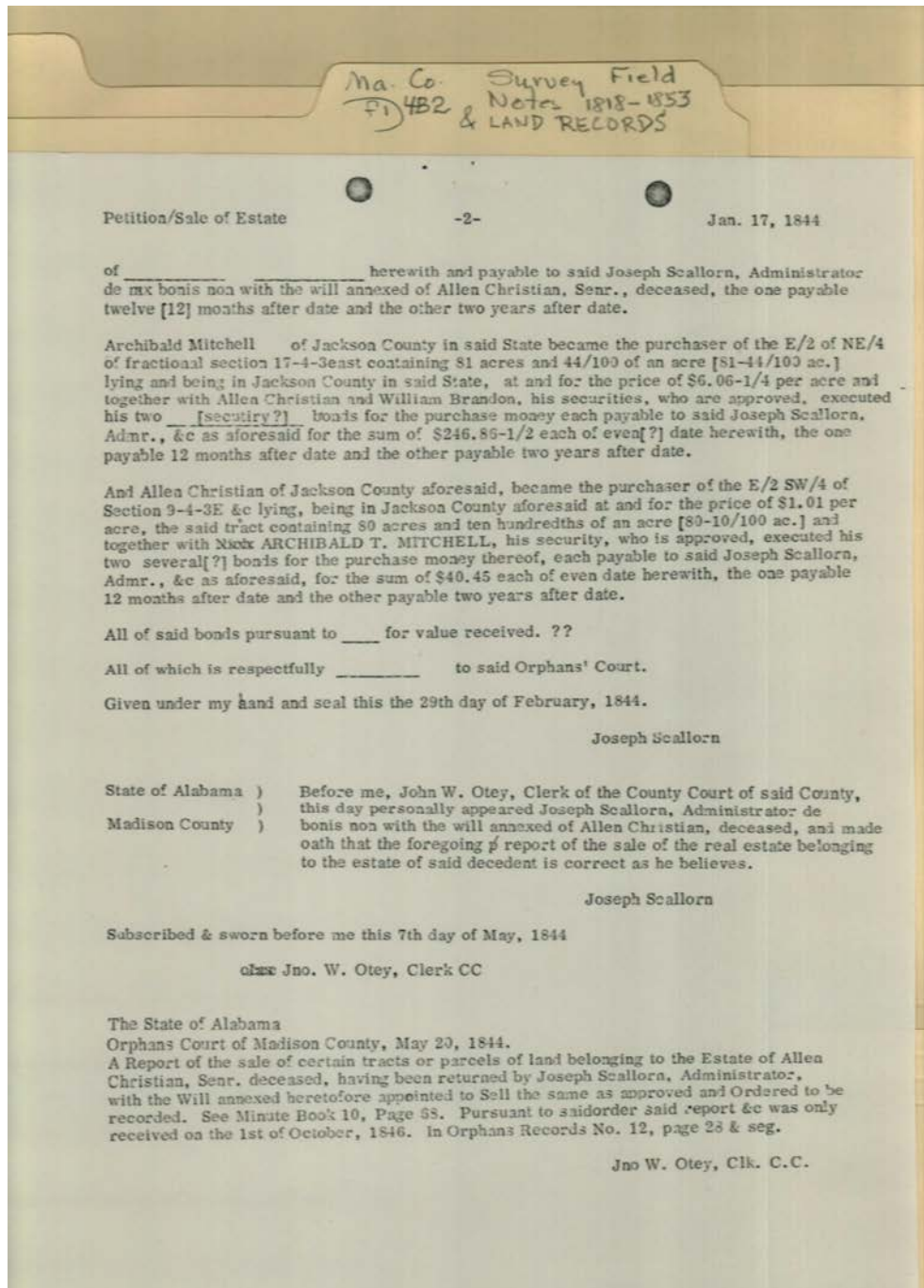
Dates:

Jan 17, 1844

Frances Cabaniss Roberts Collection: Series 4, Subseries B, Box 2, Folder 1

Survey Field Notes & Land Records, 1818 - 1853

Image 15 r04b02-01-000-0019 [Contents](#) [Index](#) [About](#)



Names:

Christian, Allen, Jr.
Christian, Allen, Sr.

Mitchell, Archibald
Otey, John W. (Clerk)

Scallorn, Joseph

Places:

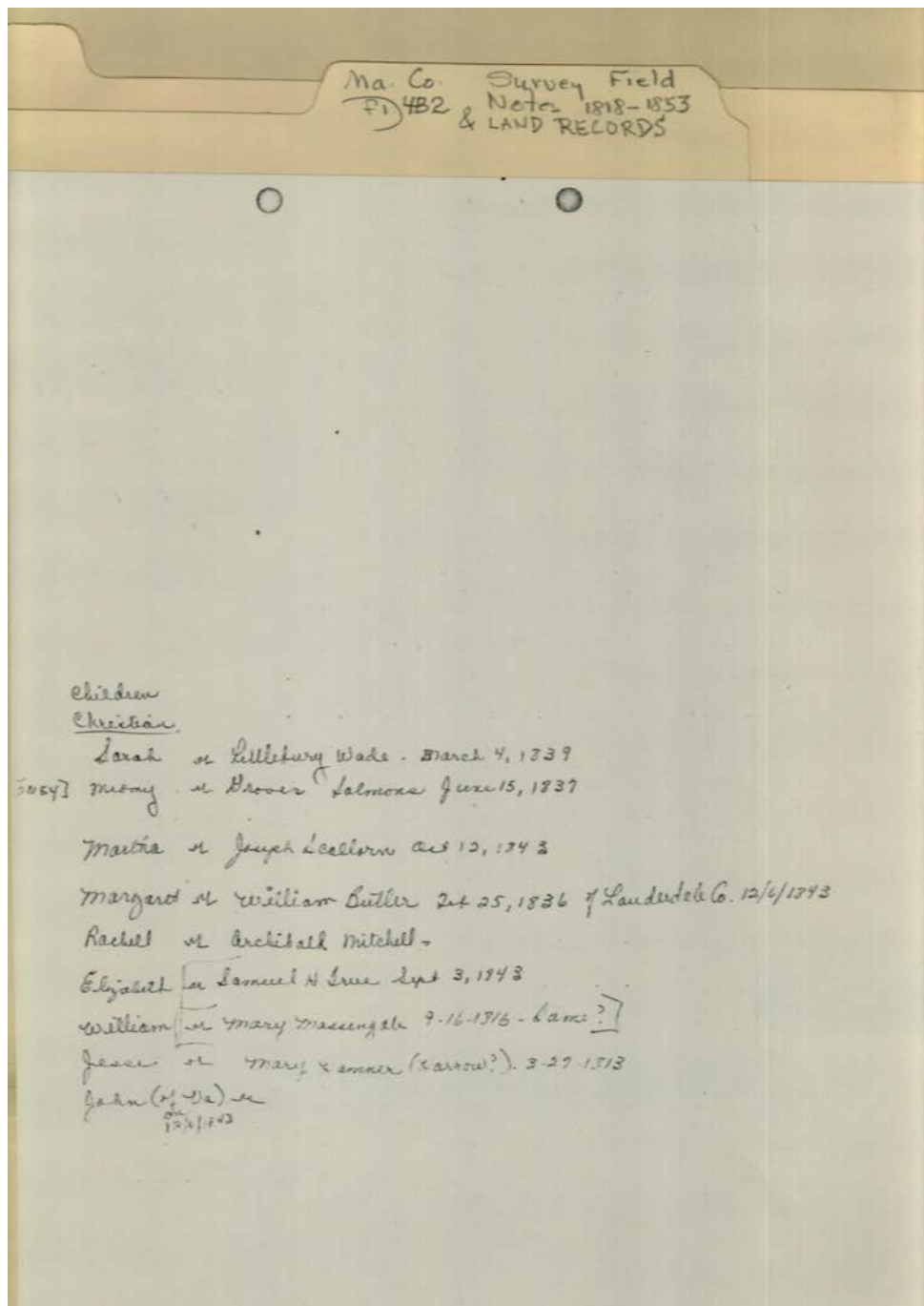
Madison County, AL

Types:

petition

Dates:

Jan 17, 1844



Names:

Butler, Margaret
Christian
Butler, William
Christian, Mary
Hamner
Christian, Jesse
Christian, John

Massengale, Mary
Christian
Massengale, William
Mitchell, Archibald
Mitchell, Rachel
Christian
Salmons, Groves

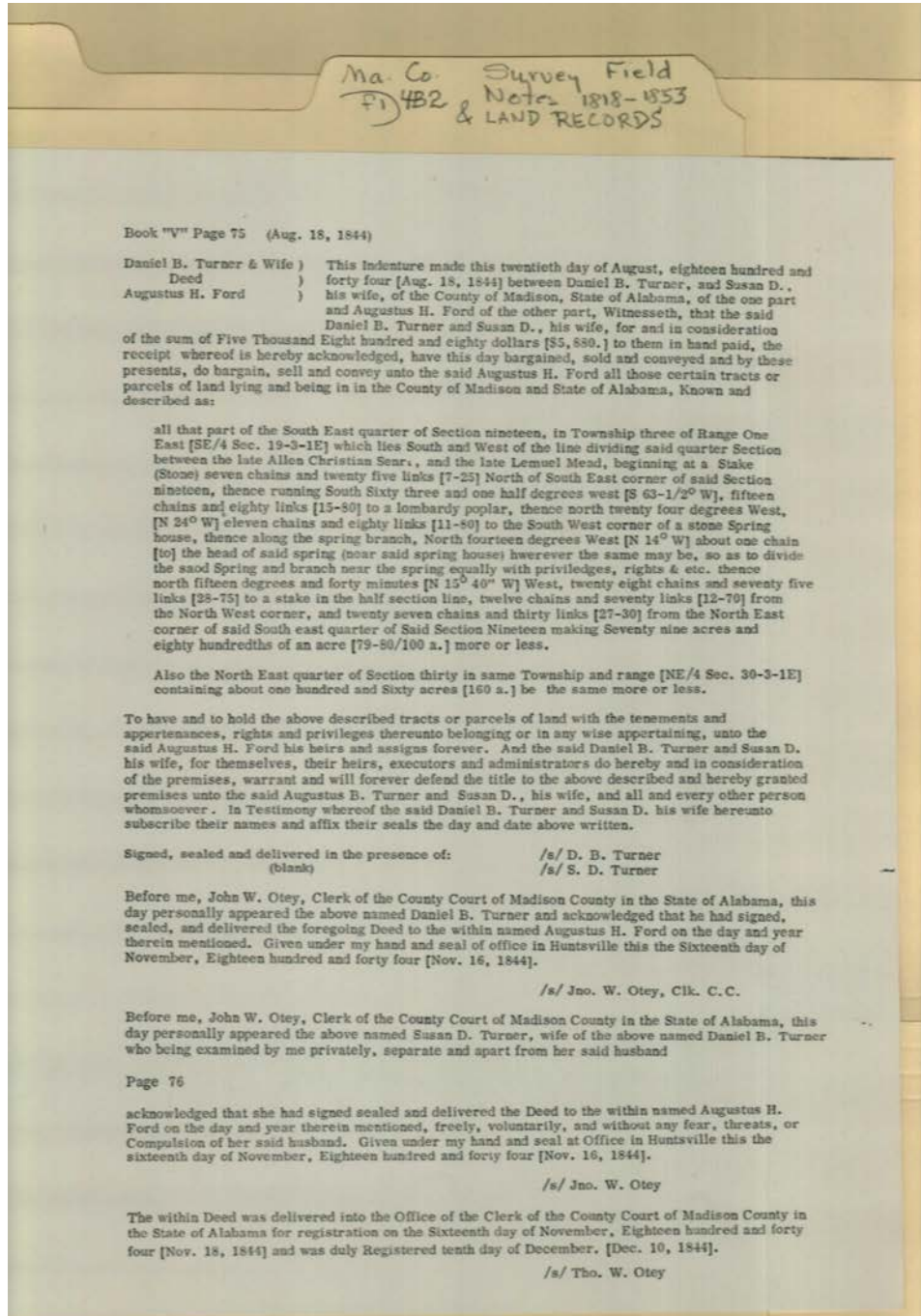
Salmons, Miomy
Christian
Scallorn, Joseph
Scallorn, Martha
Christain
True, Elizabeth
Christian

True, Samuel H.
Wade, Littleberry
Wade, Sarah
Christian

Types:
list

Frances Cabaniss Roberts Collection: Series 4, Subseries B, Box 2, Folder 1
Survey Field Notes & Land Records, 1818 - 1853

Image 17 r04b02-01-000-0021 [Contents](#) [Index](#) [About](#)



Names:

Christian, Allen, Sr.
Ford, Augustus H.

Mead, Lemuel
Otey, John W. (Clerk)

Turner, Daniel B.
Turner, Susan D.

Places:

Madison County, AL

Types:

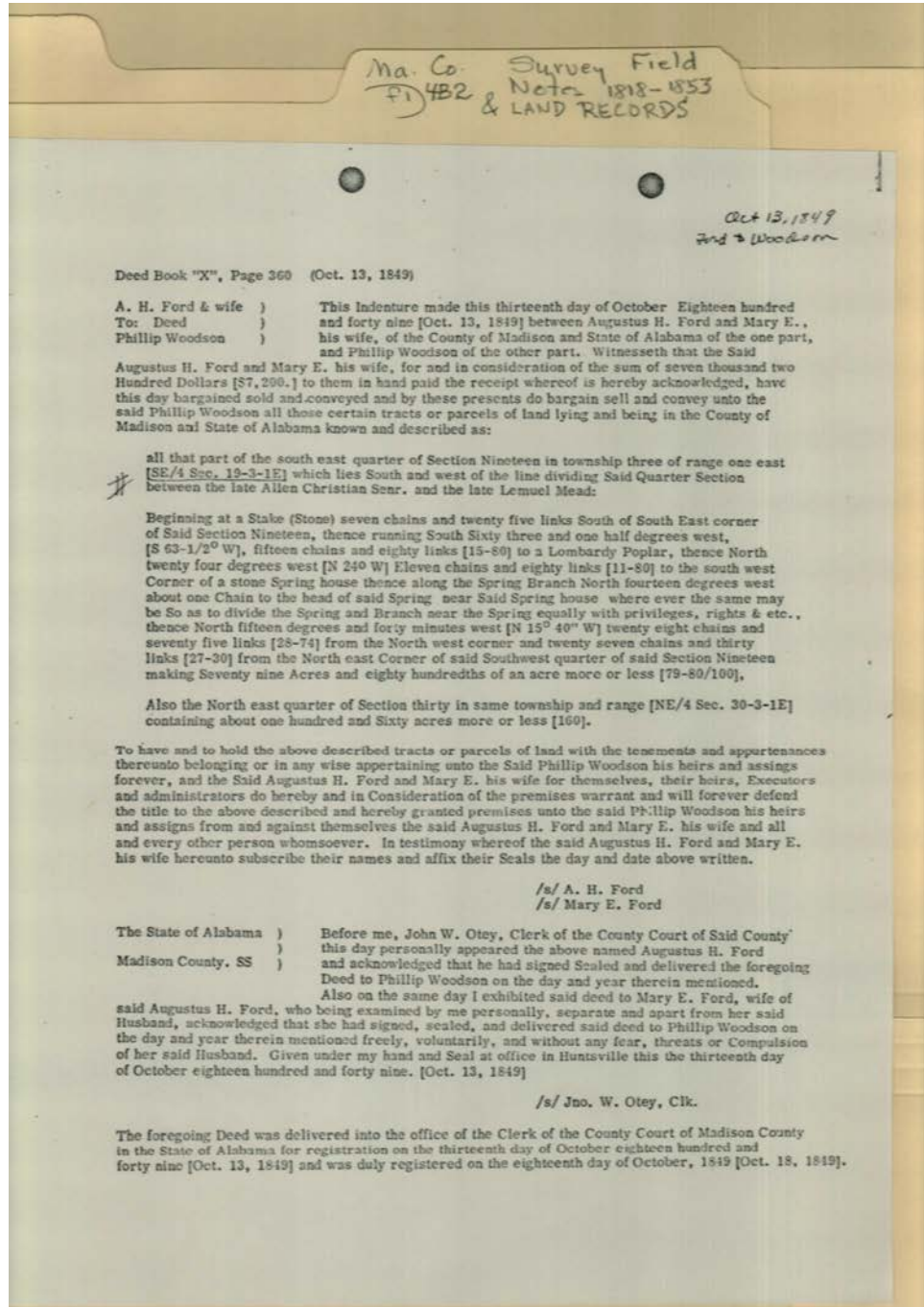
deed

Dates:

Aug 18, 1844

Frances Cabaniss Roberts Collection: Series 4, Subseries B, Box 2, Folder 1
Survey Field Notes & Land Records, 1818 - 1853

Image 18 r04b02-01-000-0022 [Contents](#) [Index](#) [About](#)



Names:

Christian, Allen, Sr.
Ford, Augustus H.

Ford, Mary E.
Mead, Lemuel

Otey, John W. (Clerk)
Woodson, Phillip

Places:

Madison County, AL

Types:

deed

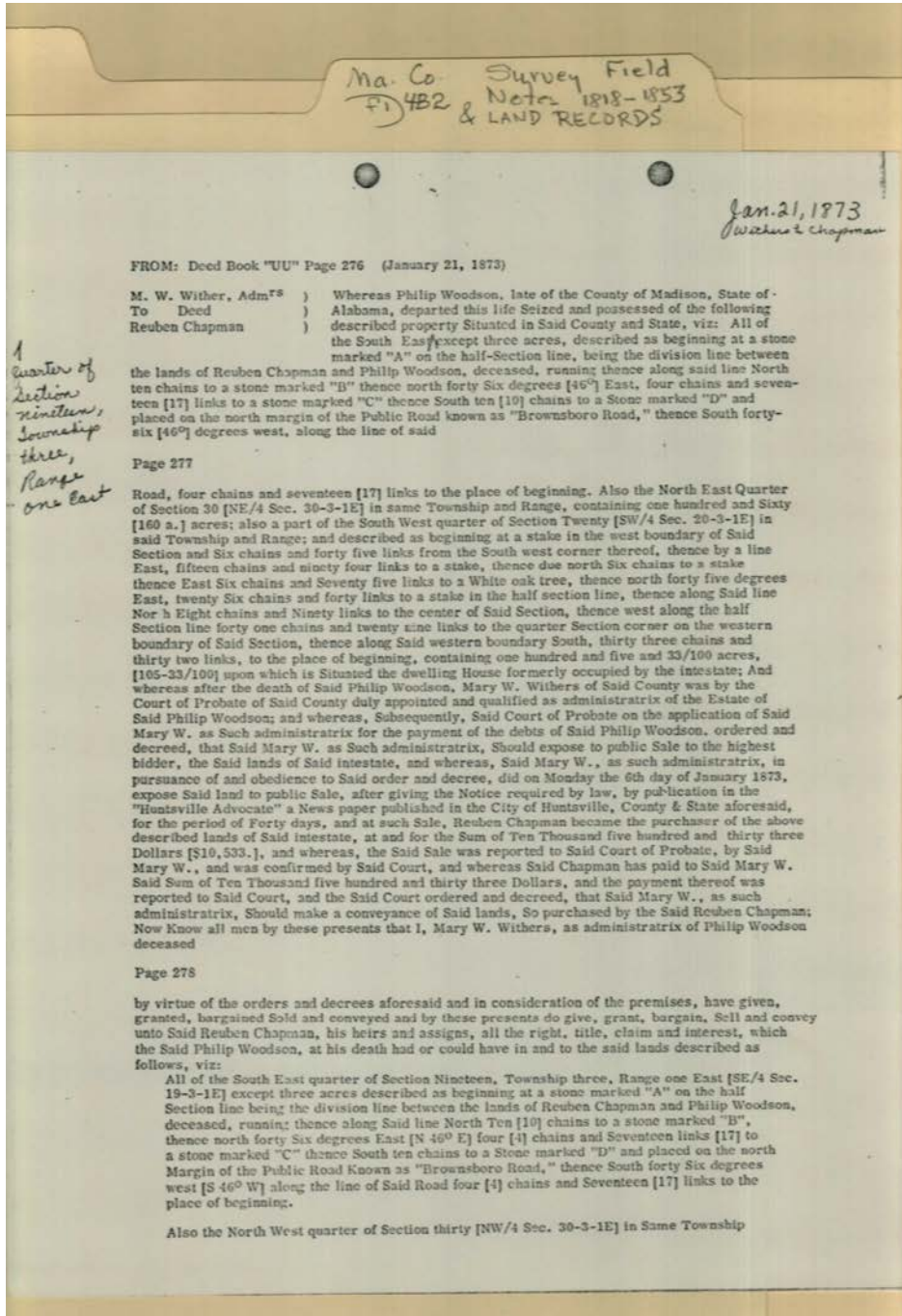
Dates:

Oct, 13, 1849

Frances Cabaniss Roberts Collection: Series 4, Subseries B, Box 2, Folder 1

Survey Field Notes & Land Records, 1818 - 1853

Image 19 r04b02-01-000-0023 [Contents](#) [Index](#) [About](#)



Names:

Chapman, Reuben

Wither, M. W.

Withers, Mary W.

Woodson, Phillip

Places:

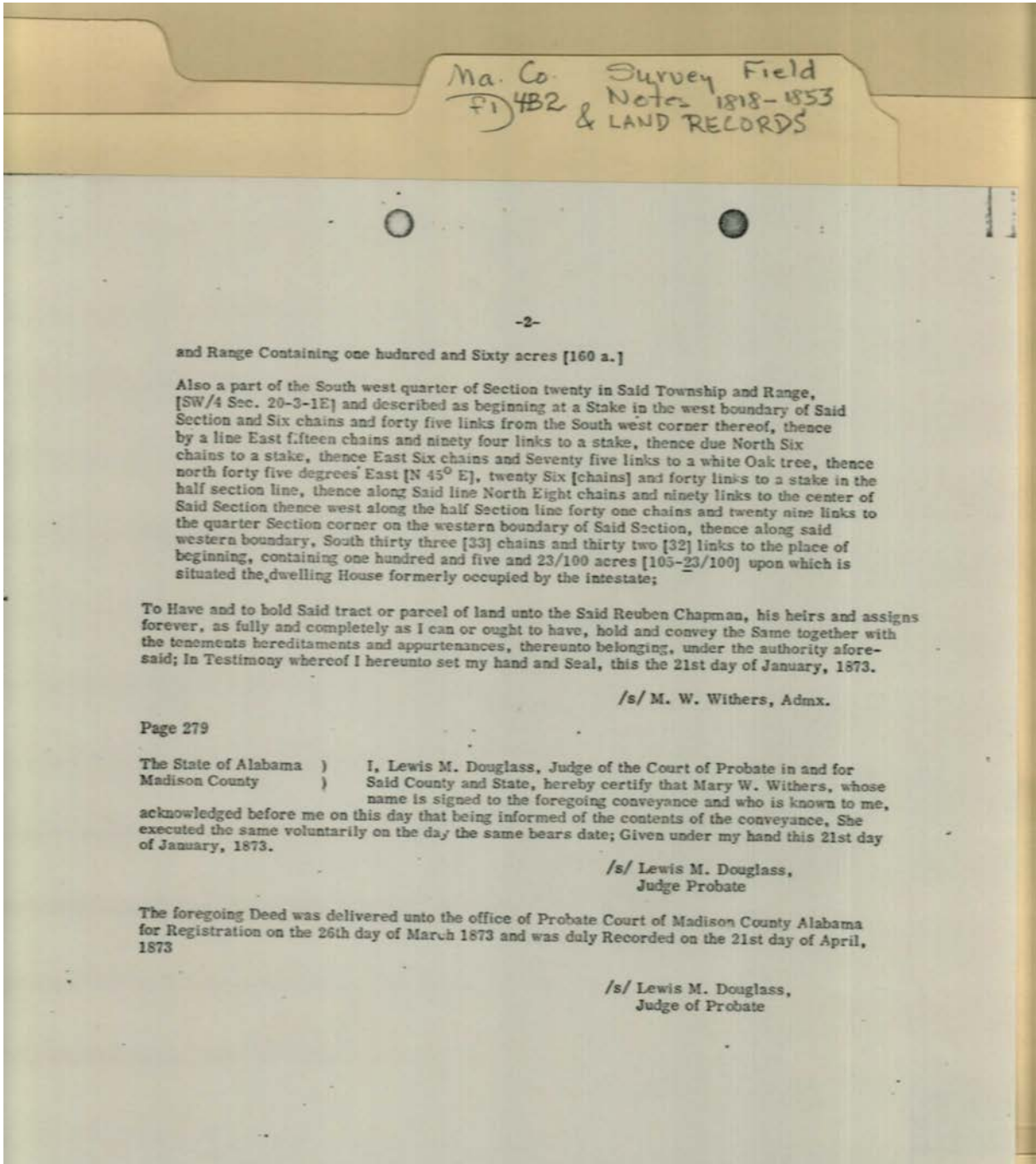
Madison County, AL

Types:

deed

Dates:

Jan 21, 1873



Names:

Chapman, Reuben

Douglass, Lewis M.
(Judge)

Wither, M. W.

Places:

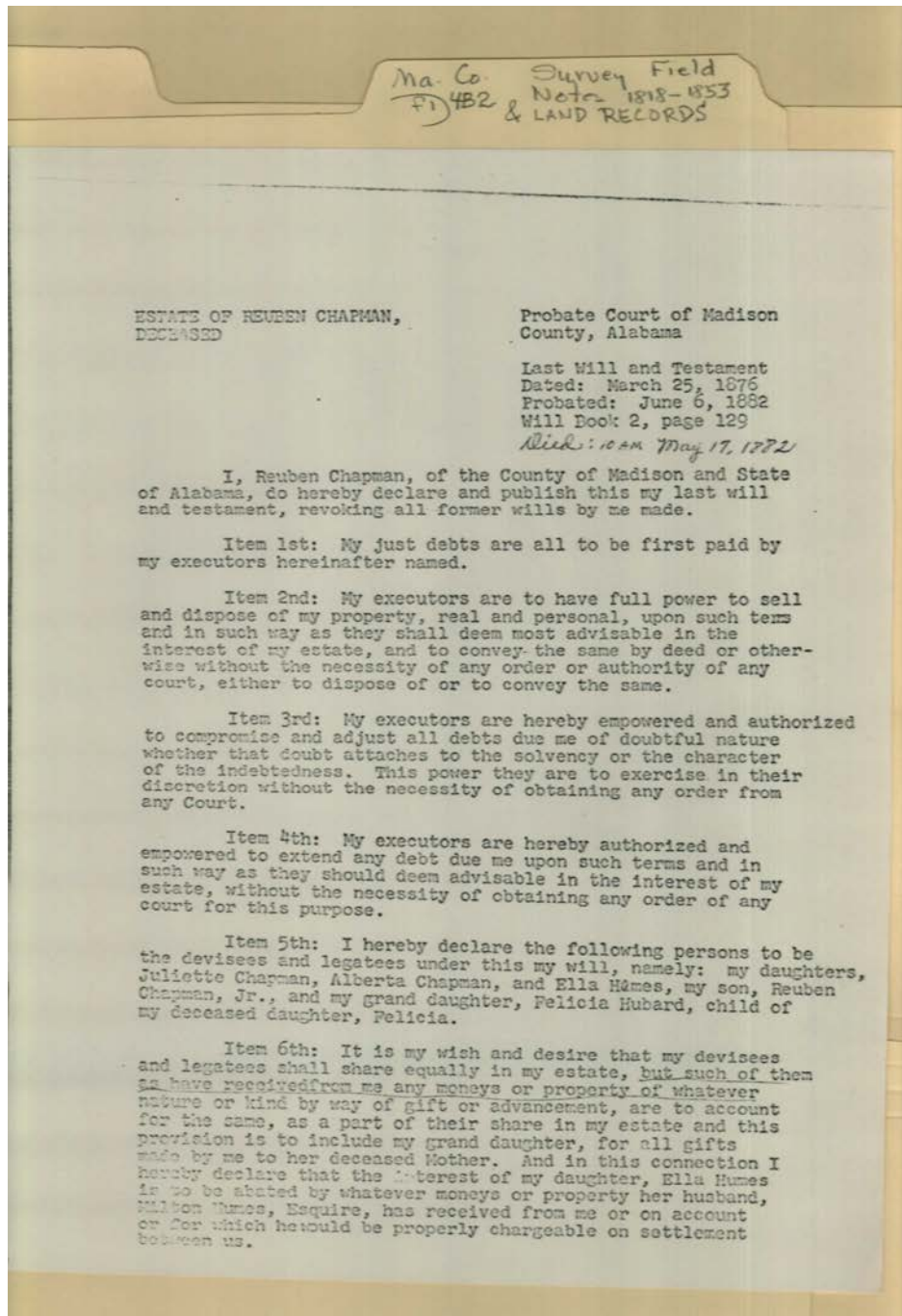
Madison County, AL

Types:

deed

Dates:

Jan 21, 1873



Names:

Chapman, Alberta
Chapman, Felicia

Chapman, Juliette
Chapman, Reuben

Chapman, Reuben, Jr.
Hubard, Felicia

Humes, Ella
Humes, Milton

Places:

Madison County, AL

Types:

will

Dates:

Mar 25, 1876

Ma. Co. Survey Field
Fi 4B2 Notes 1818-1853
& LAND RECORDS

I have no general memoranda showing what gifts and advancements I have made to my children nor of the state of the account between myself and my son-in-law, Milton Humes, but one of my executors hereafter named has a general familiarity with much of my business and he may thus be enabled to reach an approximate estimate.

Item 7th: During the administration of my estate by my executors, they are to allow to each of my unmarried daughters and to my son, Reuben, and to my grand daughter, Felicia Hubbard, and to my daughter, Ella Humes, annually such sums of money as they may deem reasonable and proper, for their support and maintenance to be charged against them with interest upon the final settlement of my estate as so much protants of their interest in the same.

Item 8th: My estate is to be kept together by my executors for at least five years and thereafter until at least two of my devisees and legatees who are of age, shall require a division. This division however, is not the right and power of my executors to sell and dispose of my real and personal property at such time, in manner and upon such terms as they are authorized to do by the second item of this will.

Item 9th: Whenever my executors shall sell property or collect debts due me, they are directed to within a reasonable time thereafter to invest the moneys so realized in such safe and reliable stocks and securities as they may deem to be the best interest of my estate.

Item 10th: I hereby provide and declare that my executors are not be required to make any annual settlements of thier administration of my estate, under this will with the Courts, but should any of the devisees and legatees desire a statement of the condition of my estate and their action in the premises, it shall be the duty of my executors to furnish the same annually to them.

Item 11th: I hereby nominate and appoint as my executors, my son Reuben Chapman, Jr and my friend, Wm. R. Rison, because of my confidence in him and his general knowledge of my business, with the right and power in the said Wm. R. Rison to execute all the provisions of this will during the minority of my son, and it is my wish and desire, and I do hereby provide that my said executors nor either of them is to be required to give bond as such executors.

Item 12th: It will be seen from the unusual powers conferred upon my executors that a strong and controlling motive with me is to avoid for my estate all unnecessary costs in the administration and settlement.

Names:

Chapman, Reuben, Jr.

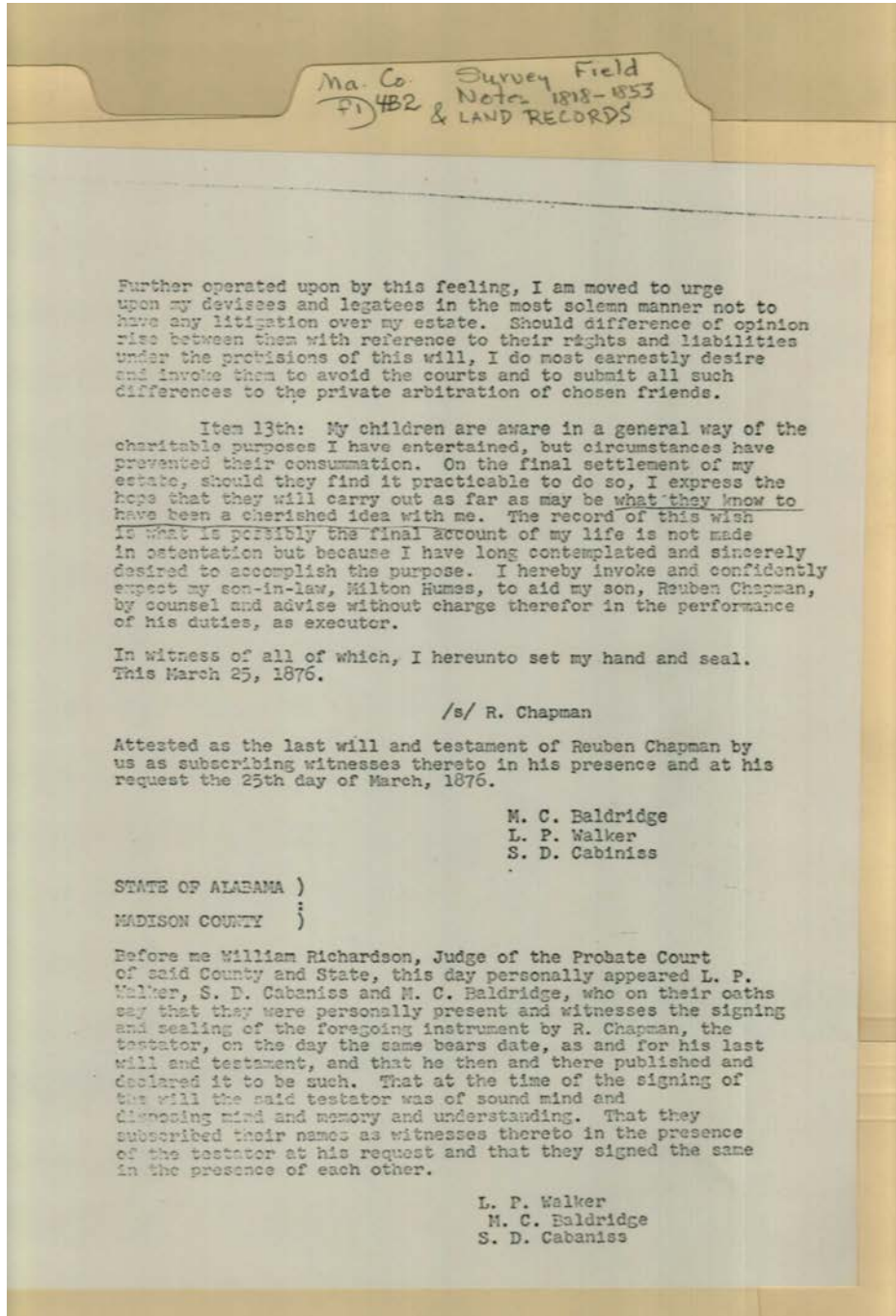
Hubard, Felicia

Humes, Ella

Rison, William R.

Types:

will



Names:

Baldrige, W. C.
Cabaniss, S. D.
Chapman, Reuben

Chapman, Reuben, Jr.
Humes, Milton

Richardson, William
(Judge)
Walker, L. P.

Places:

Madison County, AL

Types:

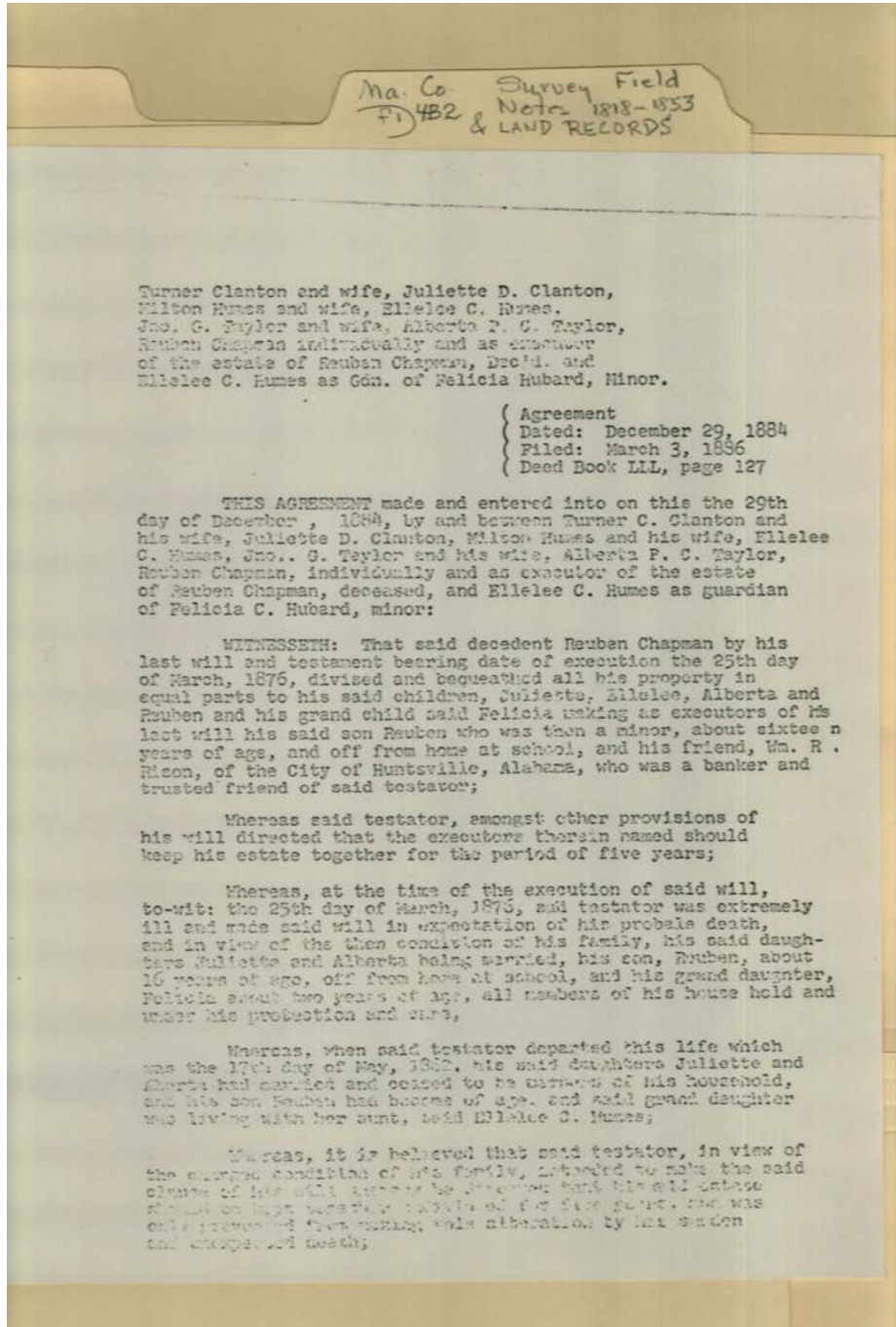
will

Dates:

Mar 25, 1876

Frances Cabaniss Roberts Collection: Series 4, Subseries B, Box 2, Folder 1
Survey Field Notes & Land Records, 1818 - 1853

Image 24 r04b02-01-000-0028 [Contents](#) [Index](#) [About](#)



Names:

Chapman, Reuben
Clanton, Juliette D.
Clanton, Turner

Hubard, Felicia
Humes, Ellelee C.
Humes, Milton

Rison, William R.
Taylor, Alberta P. G.
Taylor, John G.

Places:

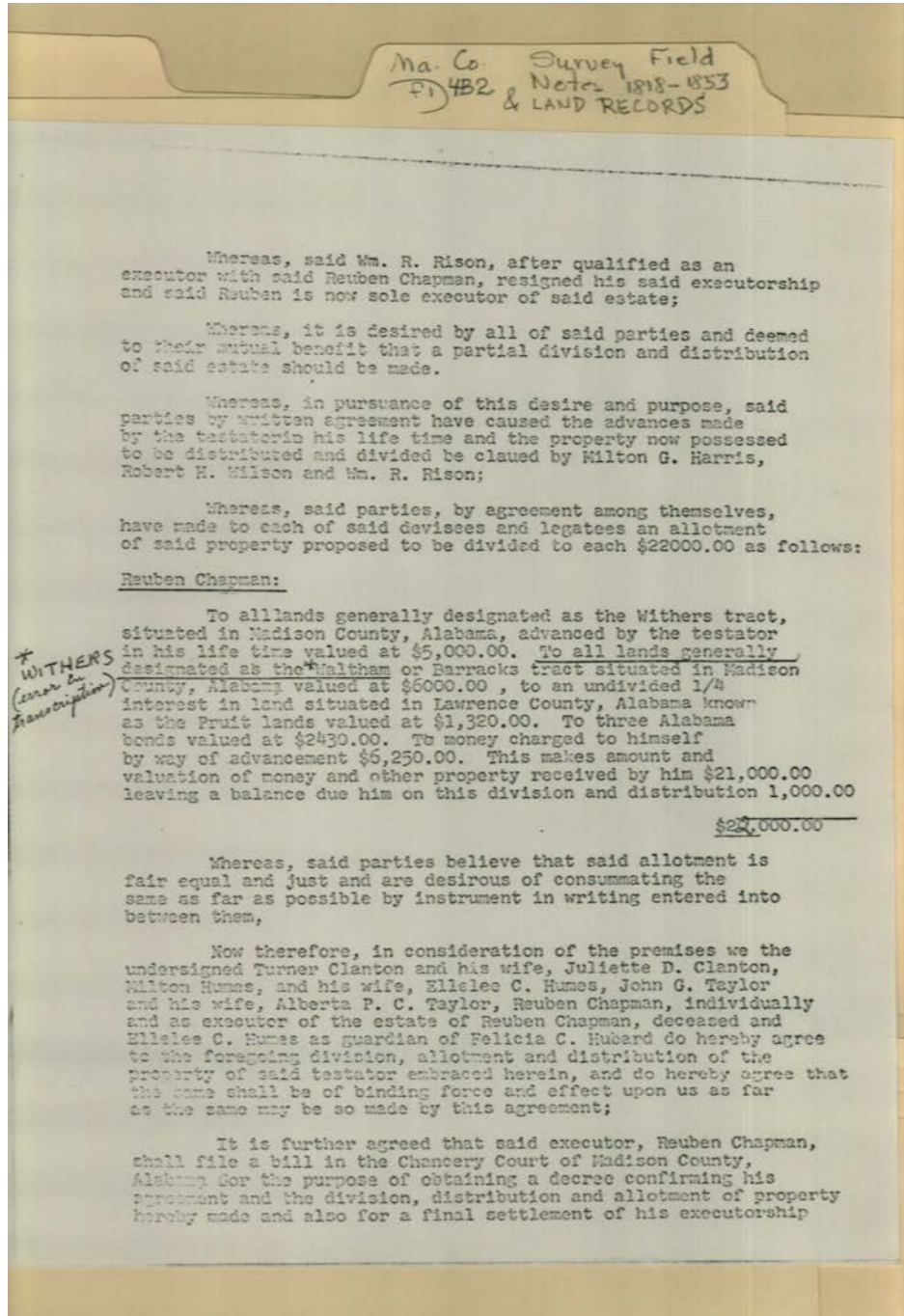
Madison County, AL

Types:

agreement

Dates:

Dec 29, 1884



Names:

Barracks,
Chapman, Reuben
Clanton, Juliette D.
Clanton, Turner

Harris, Milton G.
Hubard, Felicia C.
Humes, Ellelee C.
Humes, Milton

Pruit,
Rison, William R.
Taylor, Alberta P. C..
Taylor, John G.

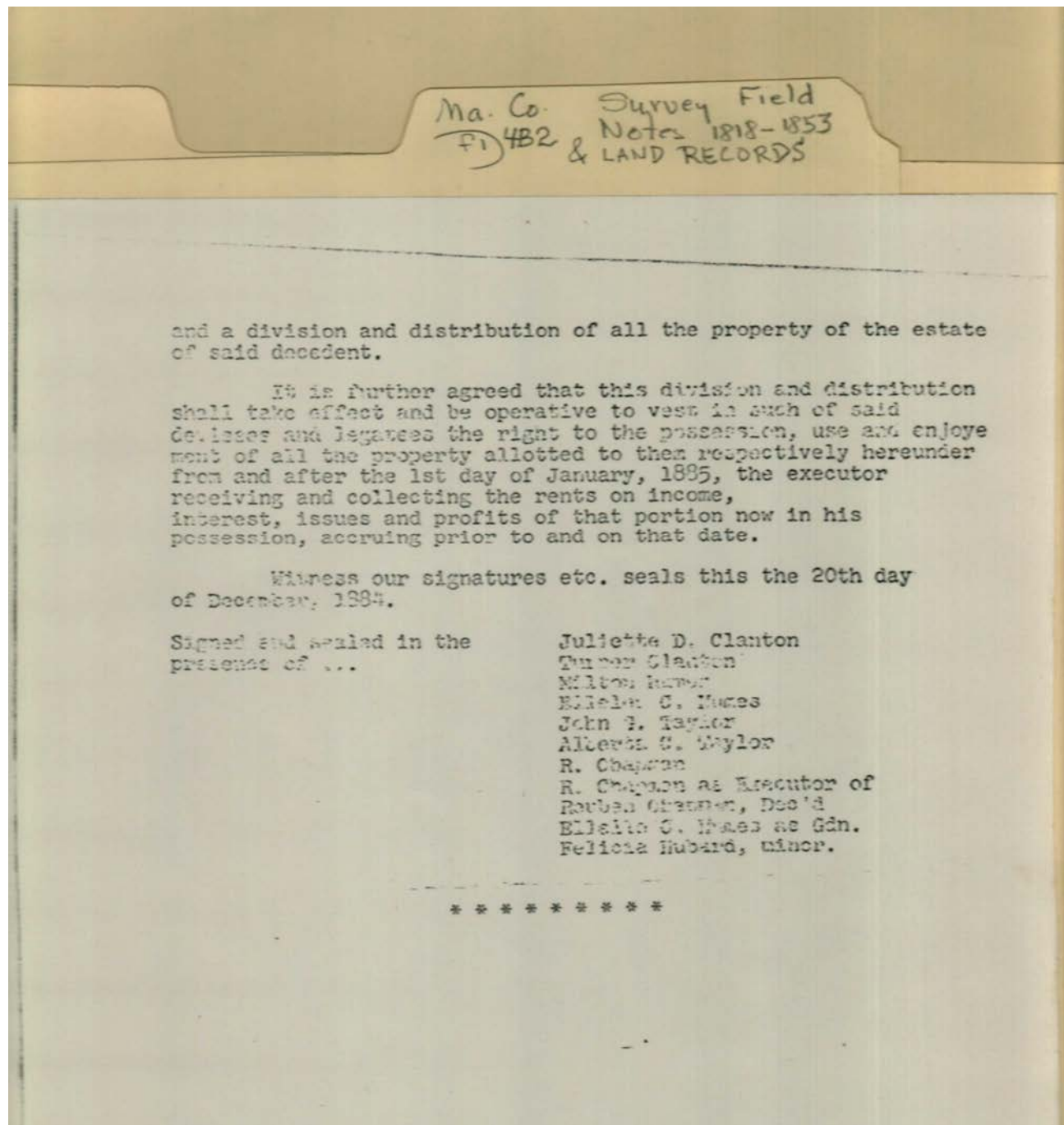
Wilson, Robert H.
Withers,

Places:

Madison County, AL

Types:

agreement



Names:

Chapman, Reuben, Jr.
Clanton, Juliette D.

Clanton, Turner
Hubard, Felicia

Humes, Ellelee C.
Humes, Milton

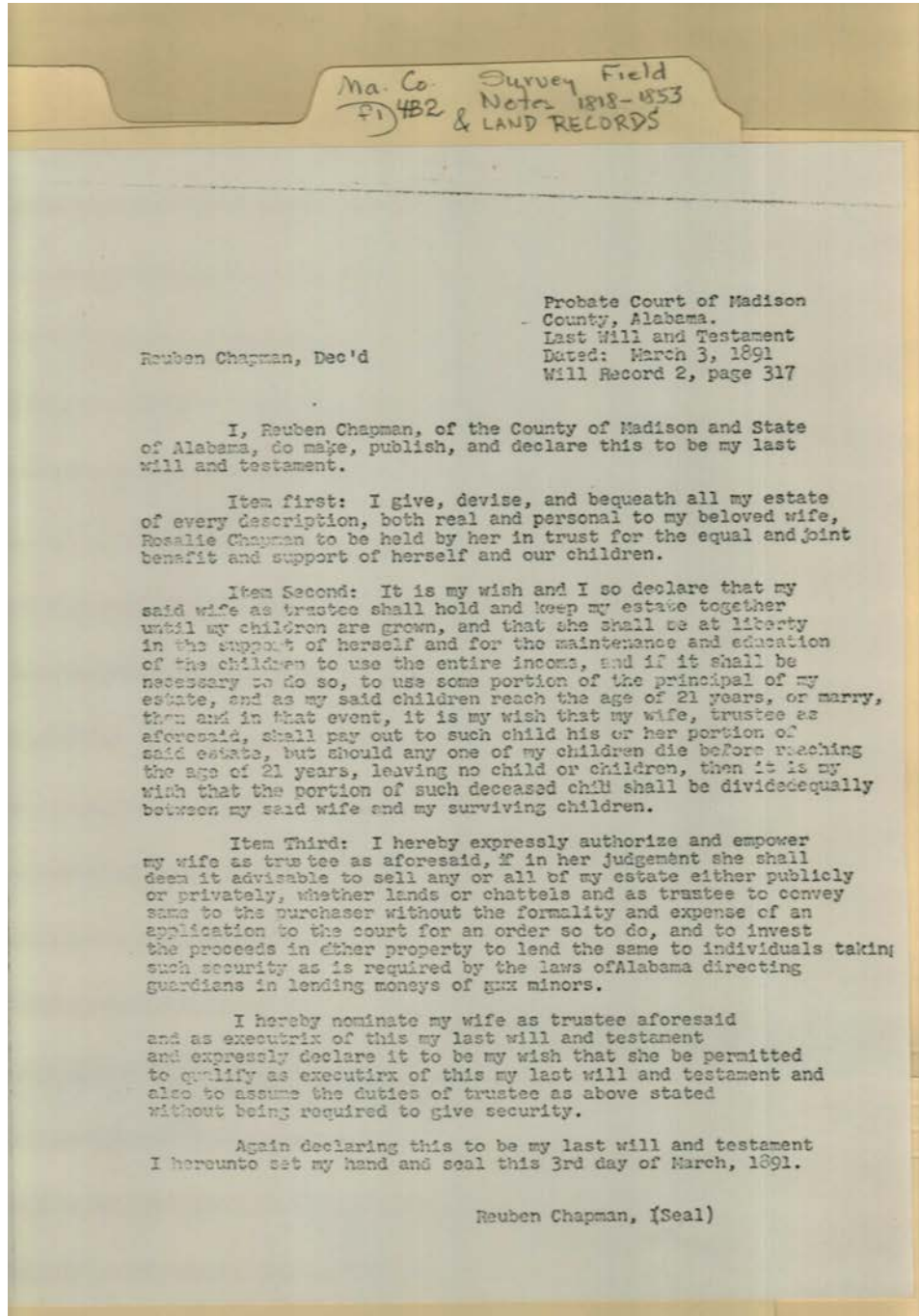
Taylor, Alberta P. C..
Taylor, John G.

Types:

agreement

Dates:

Dec 20, 1884



Names:

Chapman, Reuben, Jr.

Chapman, Rosalie

Places:

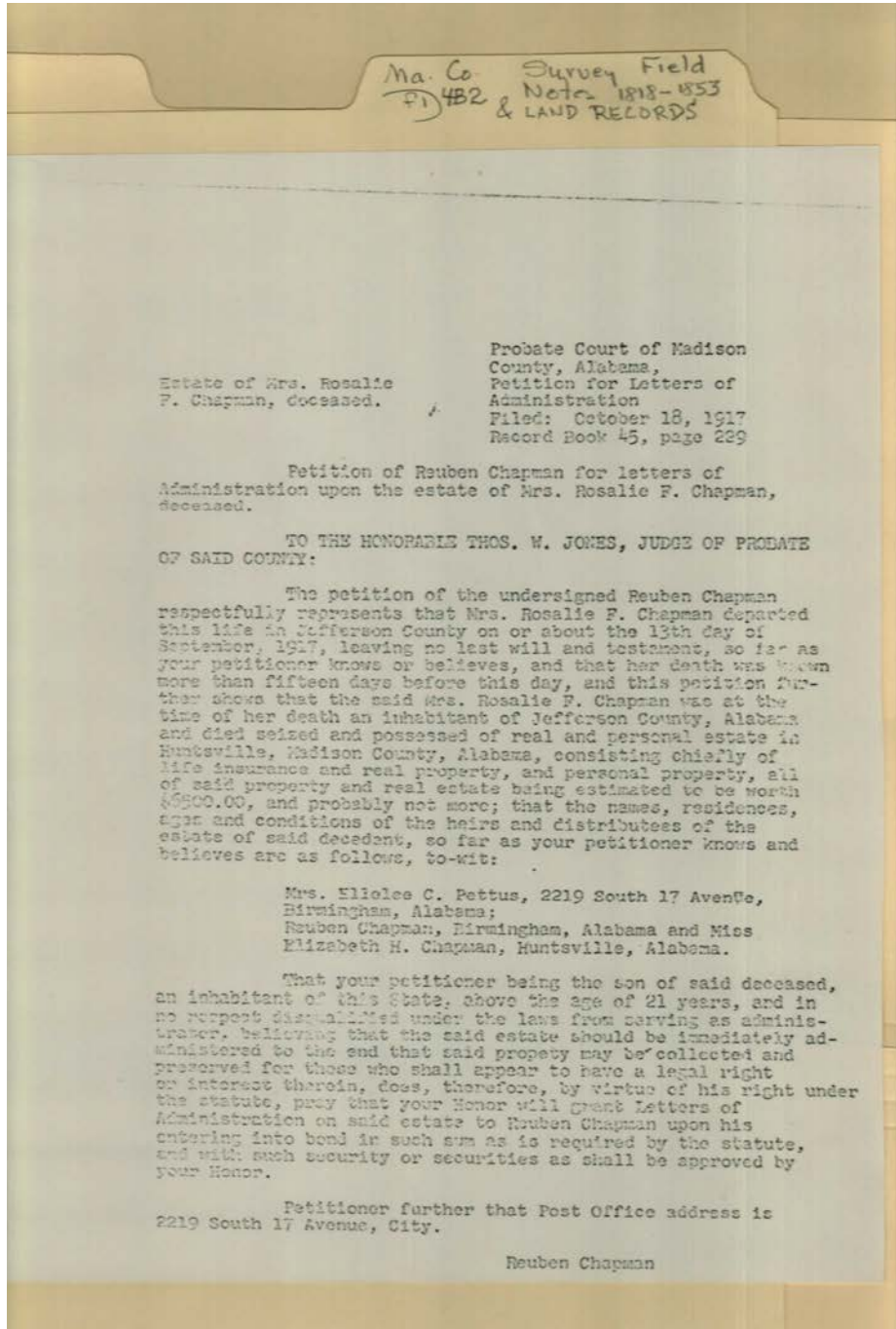
Madison County, AL

Types:

will

Dates:

Mar 03, 1891



Names:

Chapman, Elizabeth
H.

Chapman, Reuben
Chapman, Rosalie F.

Jones, Thomas W.
Pettus, Ellelee C.

Places:

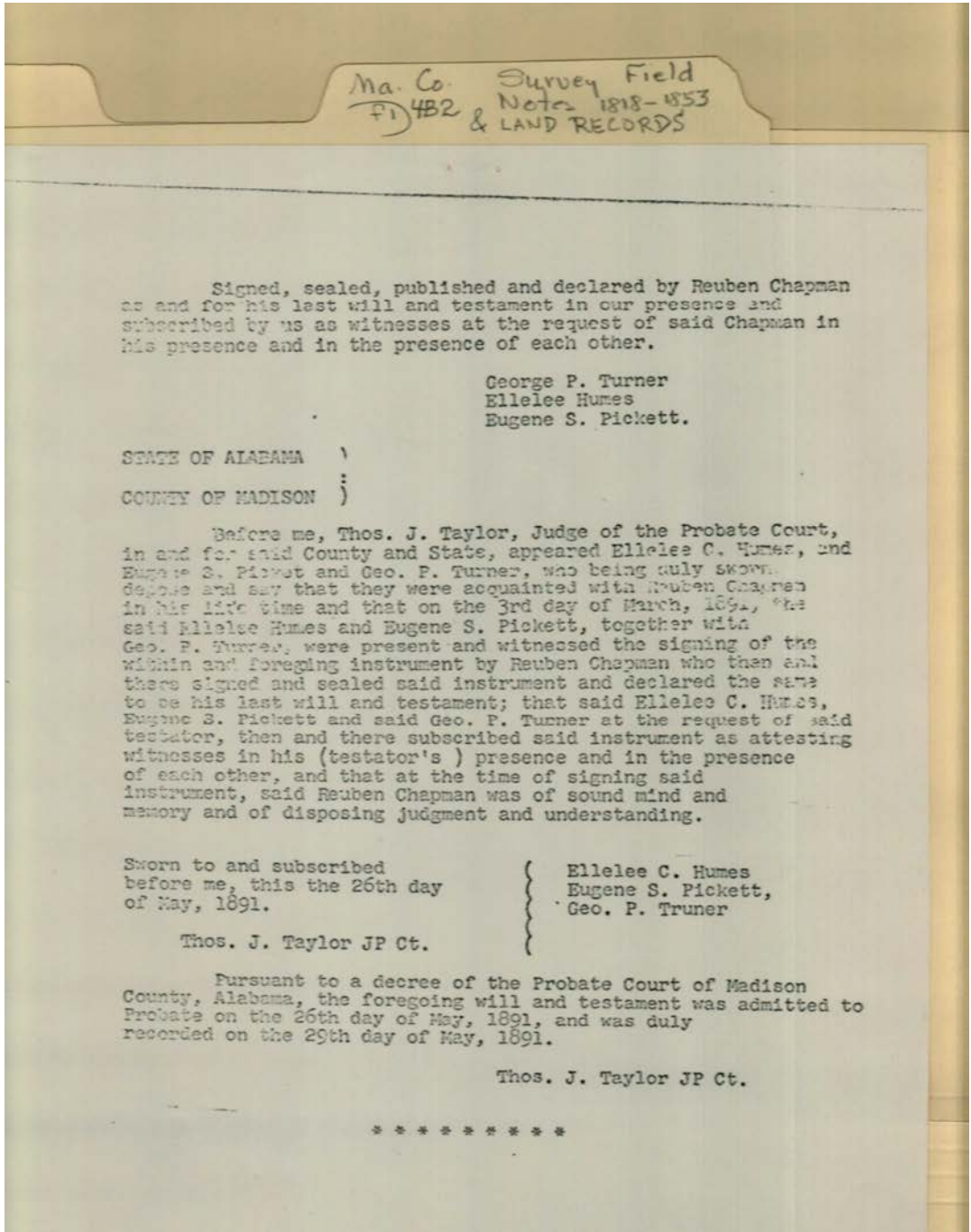
Madison County, AL

Types:

petition

Dates:

Oct 18, 1917



Names:

Humes, Ellelee C.
Pickett, Eugene S.

Taylor, Thomas, J.
(Judge)

Turner, George P.

Places:

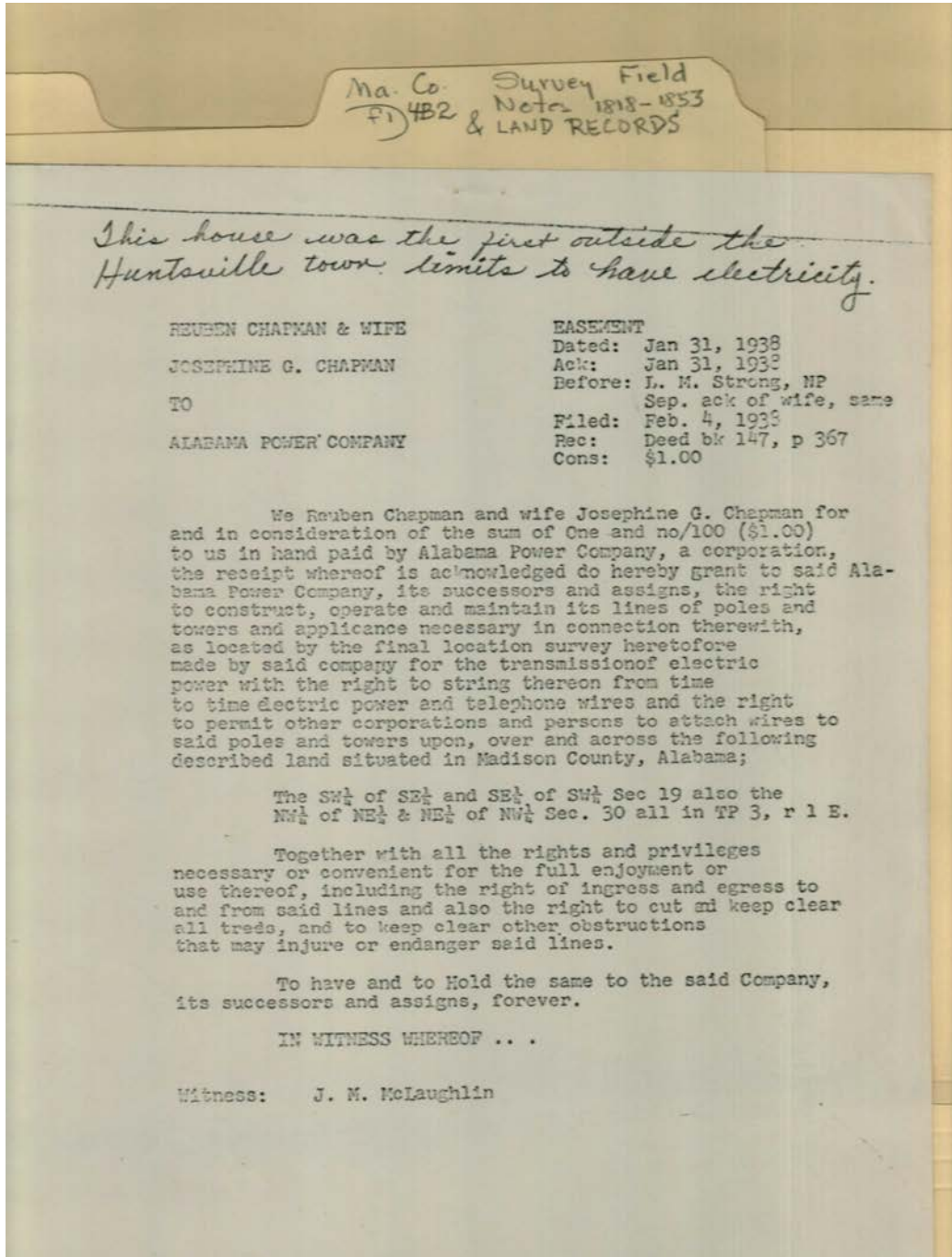
Madison County, AL

Types:

petition

Dates:

May 26, 1891



Names:

Alabama Power
Company

Chapman, Josephine
G.

Chapman, Reuben
McLaughlin, J. M.

Strong, L. M.

Places:

Madison County, AL

Types:

easement

Dates:

Jan 31, 1938

Frances Cabaniss Roberts Collection: Series 4, Subseries B, Box 2, Folder 1
Survey Field Notes & Land Records, 1818 - 1853

[Contents](#) [Index](#) [About](#)

Table of Contents

[Image 1](#) (r04b02-01-000-0005)

[Image 2](#) (r04b02-01-000-0006)

[Image 3](#) (r04b02-01-000-0007)

[Image 4](#) (r04b02-01-000-0008)

[Image 5](#) (r04b02-01-000-0009)

[Image 6](#) (r04b02-01-000-0010)

[Image 7](#) (r04b02-01-000-0011)

[Image 8](#) (r04b02-01-000-0012)

[Image 9](#) (r04b02-01-000-0013)

[Image 10](#) (r04b02-01-000-0014)

[Image 11](#) (r04b02-01-000-0015)

[Image 12](#) (r04b02-01-000-0016)

[Image 13](#) (r04b02-01-000-0017)

[Image 14](#) (r04b02-01-000-0018)

[Image 15](#) (r04b02-01-000-0019)

[Image 16](#) (r04b02-01-000-0020)

[Image 17](#) (r04b02-01-000-0021)

[Image 18](#) (r04b02-01-000-0022)

[Image 19](#) (r04b02-01-000-0023)

[Image 20](#) (r04b02-01-000-0024)

[Image 21](#) (r04b02-01-000-0025)

[Image 22](#) (r04b02-01-000-0026)

[Image 23](#) (r04b02-01-000-0027)

[Image 24](#) (r04b02-01-000-0028)

[Image 25](#) (r04b02-01-000-0029)

[Image 26](#) (r04b02-01-000-0030)

[Image 27](#) (r04b02-01-000-0031)

[Image 28](#) (r04b02-01-000-0032)

[Image 29](#) (r04b02-01-000-0033)

[Image 30](#) (r04b02-01-000-0034)

[Table of Contents](#)

[Name & Place Index](#)

[About the Collection](#)

Frances Cabaniss Roberts Collection: Series 4, Subseries B, Box 2, Folder 1
Survey Field Notes & Land Records, 1818 - 1853

[Contents](#) [Index](#) [About](#)

Name & Place Index

, Alfred (slave) [5](#)
, Arch (slave) [5](#)
, Elisha (slave) [5](#), [11](#)
, Eliza (slave) [5](#), [12](#)
, Ellen (slave) [5](#)
, Ermine (slave) [5](#), [12](#)
, Hannah (slave) [5](#)
, Harriet (slave) [5](#), [11](#)
, Harry (slave) [5](#)
, James (slave) [5](#)
, Jemima (slave) [5](#)
, Josiah (slave) [5](#)
, Judy (slave) [5](#)
, Lara (slave) [5](#)
, Lige (slave) [5](#)
, Liz (slave) [6](#), [11](#)
, Lizzy (slave) [6](#)
, Lucy, the elder (slave) [5](#)
, Lucy, the younger (slave) [5](#)
, Martha (slave) [5](#)
, Mary (slave) [5](#)
, Mary (slave) [9](#)
, Matilda (slave) [5](#)
, Pam (slave) [9](#)
, Peter (slave) [5](#)
, Sarah (slave) [5](#)
, Westley (slave) [5](#)
Alabama Power Company [30](#)
Anderson, R. H. [6](#)
Baldrige, W. C. [23](#)
Barracks, [25](#)
Butler, Margaret Christian [13](#), [16](#)
Butler, William [13](#), [16](#)
Cabaniss, S. D. [7](#)
Cabiniss, S. D. [23](#)
Chapman, Alberta [21](#)
Chapman, Elizabeth H. [28](#)
Chapman, Felicia [21](#)
Chapman, Josephine G. [30](#)
Chapman, Juliette [21](#)
Chapman, Reuben, Jr. [21](#), [22](#), [23](#), [26](#), [27](#)
Chapman, Reuben [19](#), [20](#), [21](#), [23](#), [24](#), [25](#), [28](#), [30](#)
Chapman, Rosalie F. [28](#)
Chapman, Rosalie [27](#)
Christian, Mary Hamner [16](#)
Christian, Allen, Jr. [5](#), [8](#), [9](#), [10](#), [11](#), [12](#), [13](#), [15](#)
Christian, Allen, Sr. [5](#), [10](#), [11](#), [12](#), [13](#), [14](#), [15](#), [17](#), [18](#)
Christian, Allen [2](#), [3](#), [4](#), [6](#), [7](#)
Christian, Elizabeth [5](#), [8](#), [9](#)
Christian, James [6](#), [13](#)
Christian, Jesse [1](#), [6](#), [13](#), [16](#)
Christian, John C. [10](#)
Christian, John [1](#), [13](#), [16](#)
Christian, Margaret [3](#), [5](#), [8](#)
Christian, Martha E. [10](#)
Christian, Martha [5](#), [6](#), [8](#), [11](#)
Christian, Myoma [5](#)
Christian, Sarah A. [12](#)
Christian, Sarah [5](#)
Christian, William [6](#), [13](#)
Clanton, Juliette D. [24](#), [25](#), [26](#)
Clanton, Turner [24](#), [25](#), [26](#)
Clay, Clement C., Jr. (Judge) [7](#)
Dell, W. T. [8](#)
Douglass, E. [1](#)
Douglass, Lewis M. (Judge) [20](#)
Ewing, Stephen S. [8](#)
Fanning, [1](#)
Field Notes 1818-1823 [1](#)
Ford, Augustus H. [14](#), [17](#), [18](#)
Ford, Mary E. [18](#)
Government Plat Book [1](#)
Harris Hill Cemetery [4](#)
Harris, Milton G. [25](#)
Hubard, Felicia C. [25](#)
Hubard, Felicia [21](#), [22](#), [24](#), [26](#)
Humes, Ella [21](#), [22](#)
Humes, Ellelee C. [24](#), [25](#), [26](#), [29](#)
Humes, Milton [21](#), [23](#), [24](#), [25](#), [26](#)
Jewel, Thomas [1](#)
Jones, Thomas W. [28](#)
Kaiser, George [1](#), [2](#)
Madison County, AL [1](#), [2](#), [3](#), [4](#), [5](#), [6](#), [7](#), [8](#), [9](#), [10](#), [11](#), [13](#),
[14](#), [15](#), [17](#), [18](#), [19](#), [20](#), [21](#), [23](#), [24](#), [25](#), [27](#), [28](#), [29](#), [30](#)
Massengale, Mary Christian [16](#)
Massengale, William [16](#)
McBride, L. A. [1](#)
McClung, J. W. [6](#), [8](#)
McLaughlin, J. M. [30](#)
Mead, Lemuel [2](#), [3](#), [4](#), [14](#), [17](#), [18](#)
Mead, Martha [4](#)
Mead, Remuel [1](#)
Mead, Samuel [1](#)
Meade, Lemuel [1](#)
Meigs, Josiah [2](#)
Mitchell, Archibald [13](#), [15](#), [16](#)
Mitchell, Rachel Christian [13](#), [16](#)
Monroe, James, President [2](#)
Morrow, G. B. [12](#)
Original Survey Notes [1](#)
Orphans Court [6](#)
Otey, John W. (Clerk) [14](#), [15](#), [17](#), [18](#)
Patent [2](#)
Pettus, Ellelee C. [28](#)

Pickett, Eugene S. [29](#)
Powers, William [6](#)
Pruit, [25](#)
Purdom, Richard, (clerk) [2](#), [3](#), [4](#), [6](#)
Purdom, Richard, (Clerk) [9](#)
Purdom, Richard, (clerk) [10](#), [11](#)
Richardson, William (Judge) [23](#)
Rison, William R. [22](#), [24](#), [25](#)
Salmons, Groves [13](#), [16](#)
Salmons, Miomy Christian [13](#), [16](#)
Scallorn, Joseph [7](#), [13](#), [14](#), [15](#), [16](#)
Scallorn, Martha Christain [16](#)
Stokes, Henry [6](#)
Strong, L. M. [30](#)
Taylor, Alberta P. C.. [25](#), [26](#)
Taylor, Alberta P. G. [24](#)
Taylor, John G. [24](#), [25](#), [26](#)
Taylor, Thomas, J. (Judge) [29](#)
Thompson, John C. (judge) [13](#)
Thurston, Allen [1](#)
Tiller, B. [1](#)
True, Elizabeth Christian [13](#), [16](#)

True, Samuel H. [13](#), [16](#)
Turner, Daniel B. [14](#), [17](#)
Turner, George P. [29](#)
Turner, Susan D. [17](#)
United States of America [2](#)
Wade, Littleberry [7](#), [12](#), [16](#)
Wade, Sarah Ann [7](#)
Wade, Sarah Christian [13](#), [16](#)
Walker, L. P. [23](#)
Walls, Samuel [1](#)
Weaver, James W. [11](#)
Weaver, John W. [9](#)
Weaver, P. W. [11](#)
Weaver, Pleasant W. [9](#)
Will Recorded [8](#)
Wilson, Robert H. [25](#)
Wither, M. W. [19](#), [20](#)
Withers, A. J. [1](#)
Withers, Mary W. [19](#)
Withers, [25](#)
Woodson, P. [1](#)
Woodson, Phillip [18](#), [19](#)

Frances Cabaniss Roberts Collection

Preferred Citation: Frances Cabaniss Roberts Collection, Archives and Special Collections, M. Louis Salmon Library, University of Alabama in Huntsville, Huntsville, AL.

Collection Scope and Content: The Collection of 114 Linear ft. includes a total of 156 Archival Boxes. The Frances Cabaniss Roberts collection covers the historical records of the Cabaniss Roberts family. This collection contains extensive correspondence records of the Cabaniss Roberts family circa 1830 to 1930.

Archives/Special Collections Access Restrictions: None

Conditions Governing Use: This material may be protected under U. S. Copyright Law (Title 17, U.S. Code) which governs the making of photocopies or reproductions of copyrighted materials. You may use the digitized material for private study, scholarship, or research. Though the University of Alabama in Huntsville Archives and Special Collections has physical ownership of the material in its collections, in some cases we may not own the copyright to the material. It is the patron's obligation to determine and satisfy copyright restrictions when publishing or otherwise distributing materials found in our collections.

Provenance: Gift of Johanna Shields on October 28, 2006.



THE UNIVERSITY OF
ALABAMA IN HUNTSVILLE

**The UAH Archives and Special Collections
M. Louis Salmon Library**