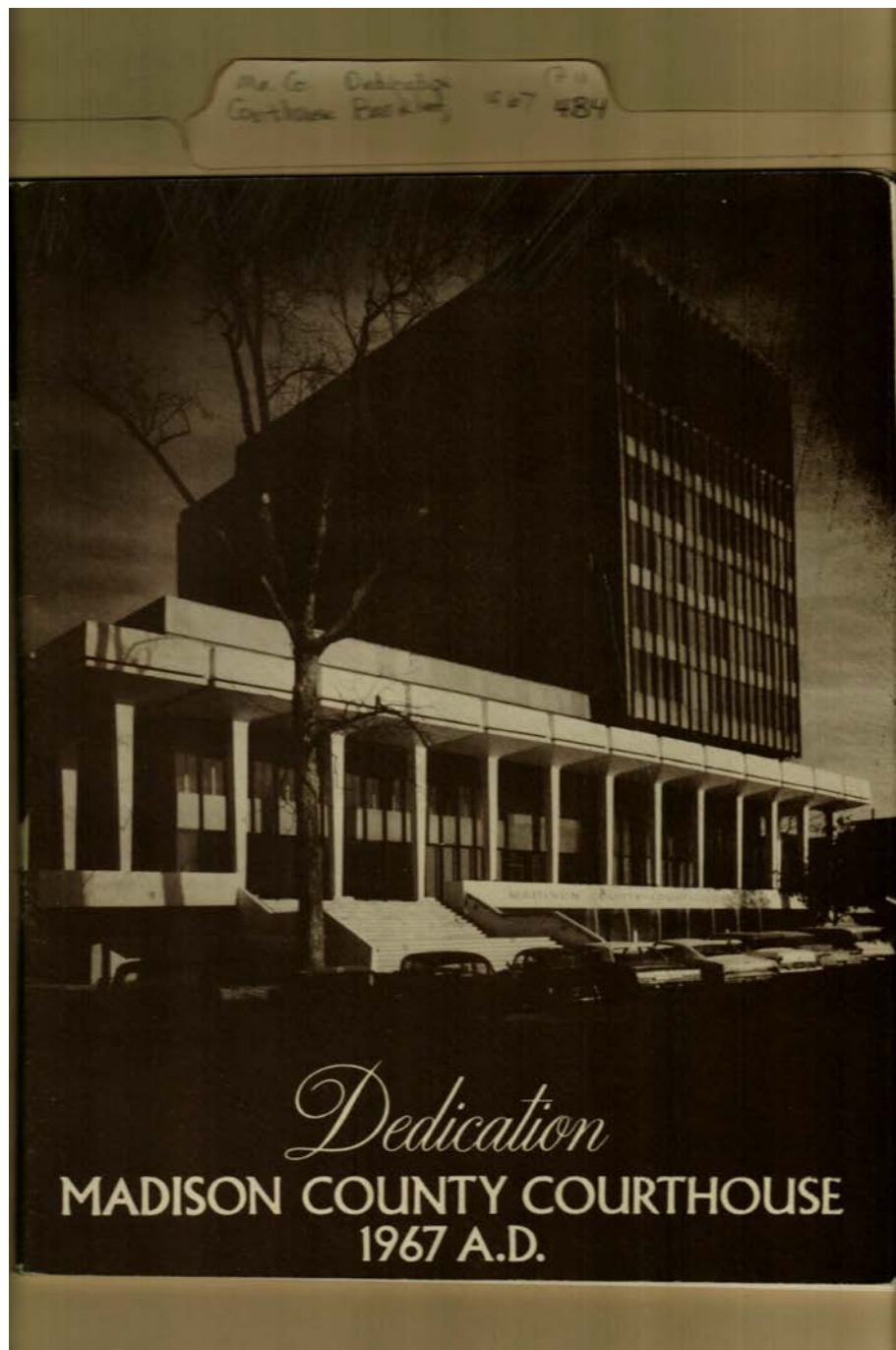


Frances Cabaniss Roberts Collection: Series 4, Subseries B, Box 4, Folder 11

Madison County Courthouse Dedication, 1967 - Madison County Buildings

Image 1 r04b04-11-000-0016 [Contents](#) [Index](#) [About](#)



Names:

Courthouse

Dedication Program

Places:

Madison County, AL

Types:

brochure

photo

Dates:

1967

Frances Cabaniss Roberts Collection: Series 4, Subseries B, Box 4, Folder 11

Madison County Courthouse Dedication, 1967 - Madison County Buildings

Image 2 r04b04-11-000-0017 [Contents](#) [Index](#) [About](#)



Names:

Mural in Foyer

Places:

Madison County, AL

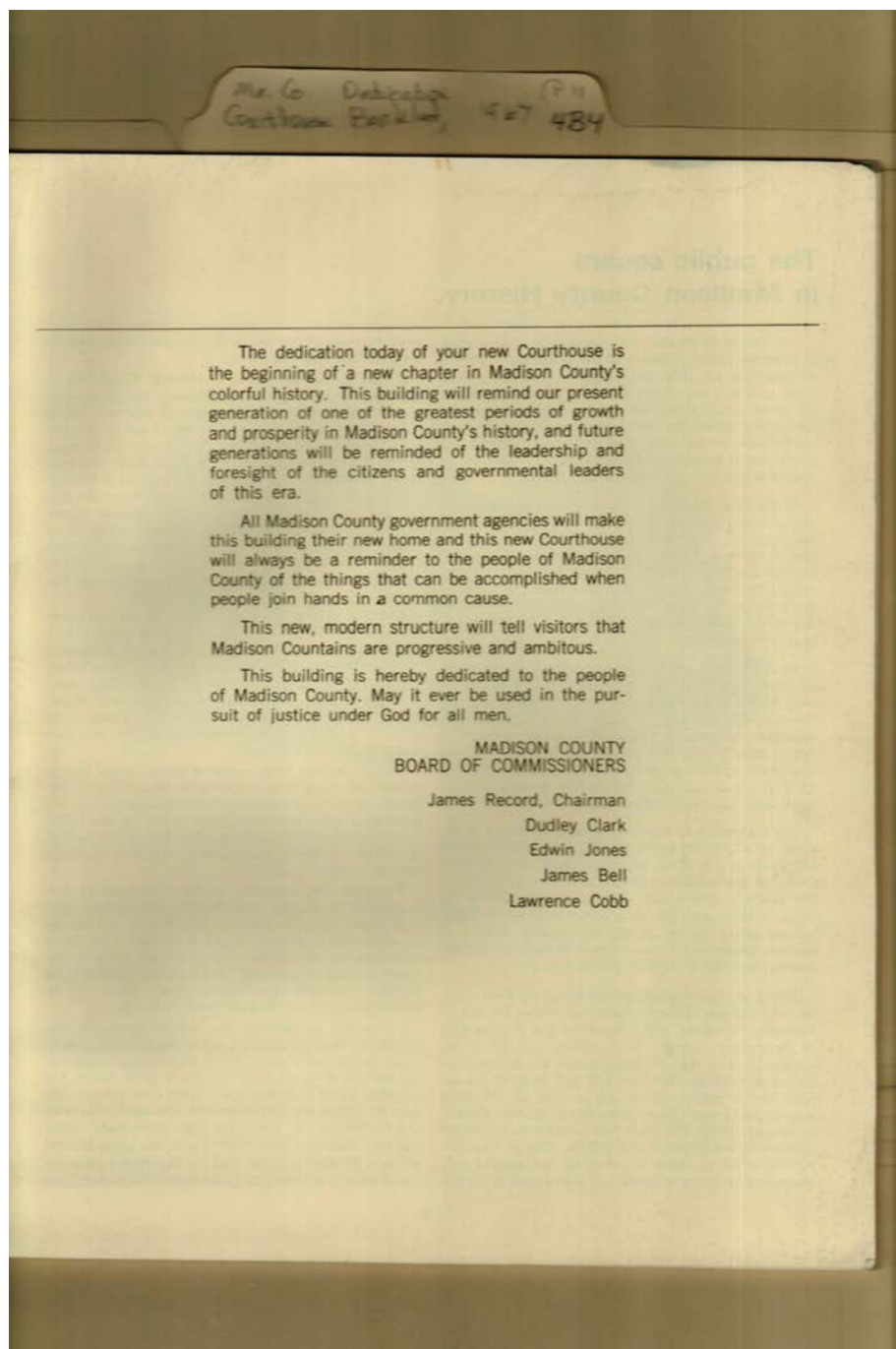
Types:

photo

Frances Cabaniss Roberts Collection: Series 4, Subseries B, Box 4, Folder 11

Madison County Courthouse Dedication, 1967 - Madison County Buildings

Image 3 r04b04-11-000-0018 [Contents](#) [Index](#) [About](#)



Names:

Bell, James
Clark, Dudley

Cobb, Lawrence
Jones, Edwin

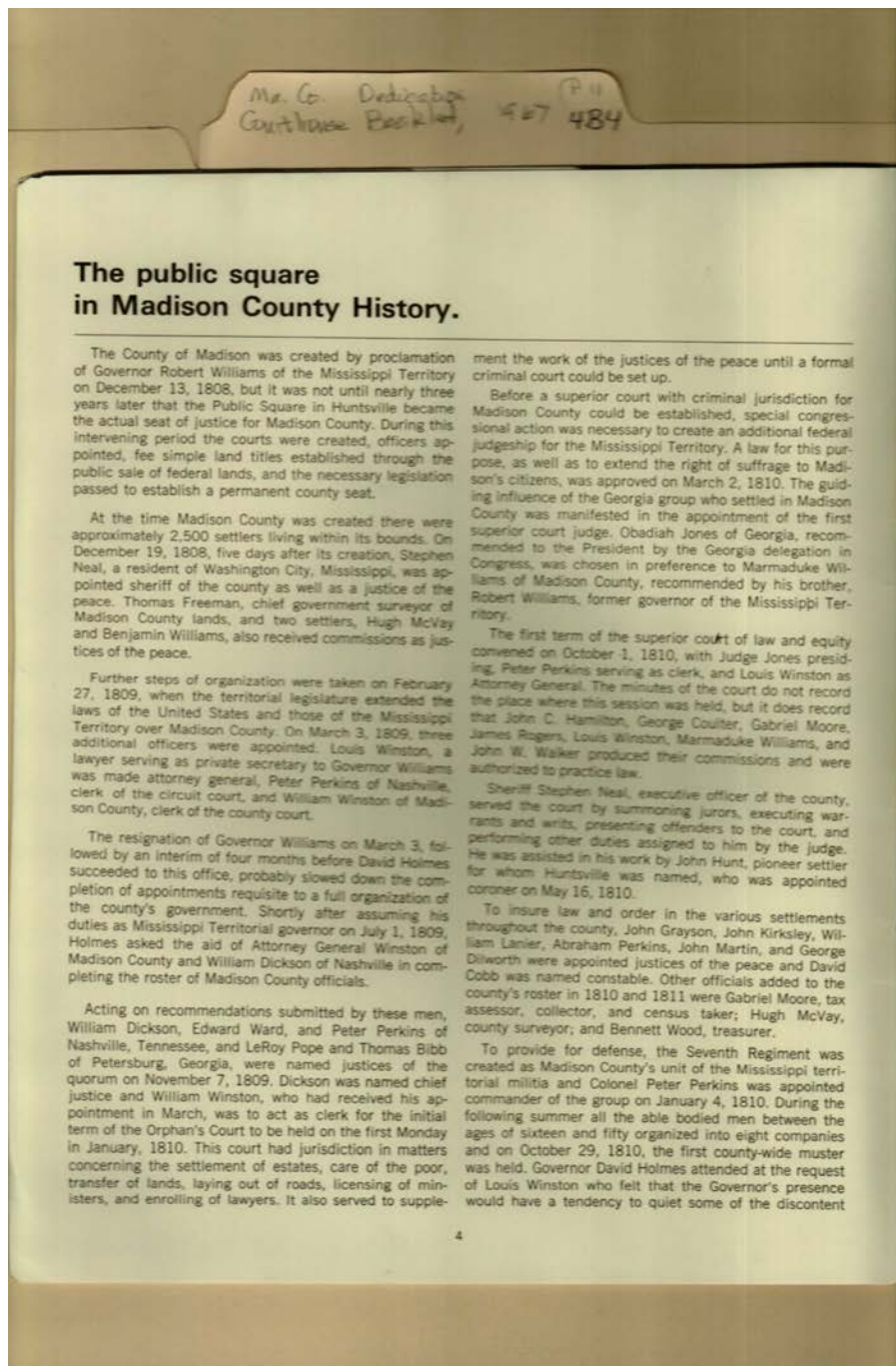
Record, James

Places:

Madison County, AL

Types:

brochure



Names:

Bibb, Thomas
Cobb, David
Coulter, George
Dickson, William
Dilworth, George
Freeman, Thomas
Grayson, John
Hamilton, John C.

Holmes, David,
Governor
Hunt, John
Jones, Obadiah
Kirksley, John
Lanier, William
Martin, John
McVay, Hugh

Moore, Gabriel
Neal, Stephen
Perkins, Abraham
Perkins, Peter
Pope, LeRoy
Rogers, James
Walker, John
Williams

Williams, Benjamin
Williams,
Marmaduke
Williams, Robert,
Governor
Winston, Louis

Places:

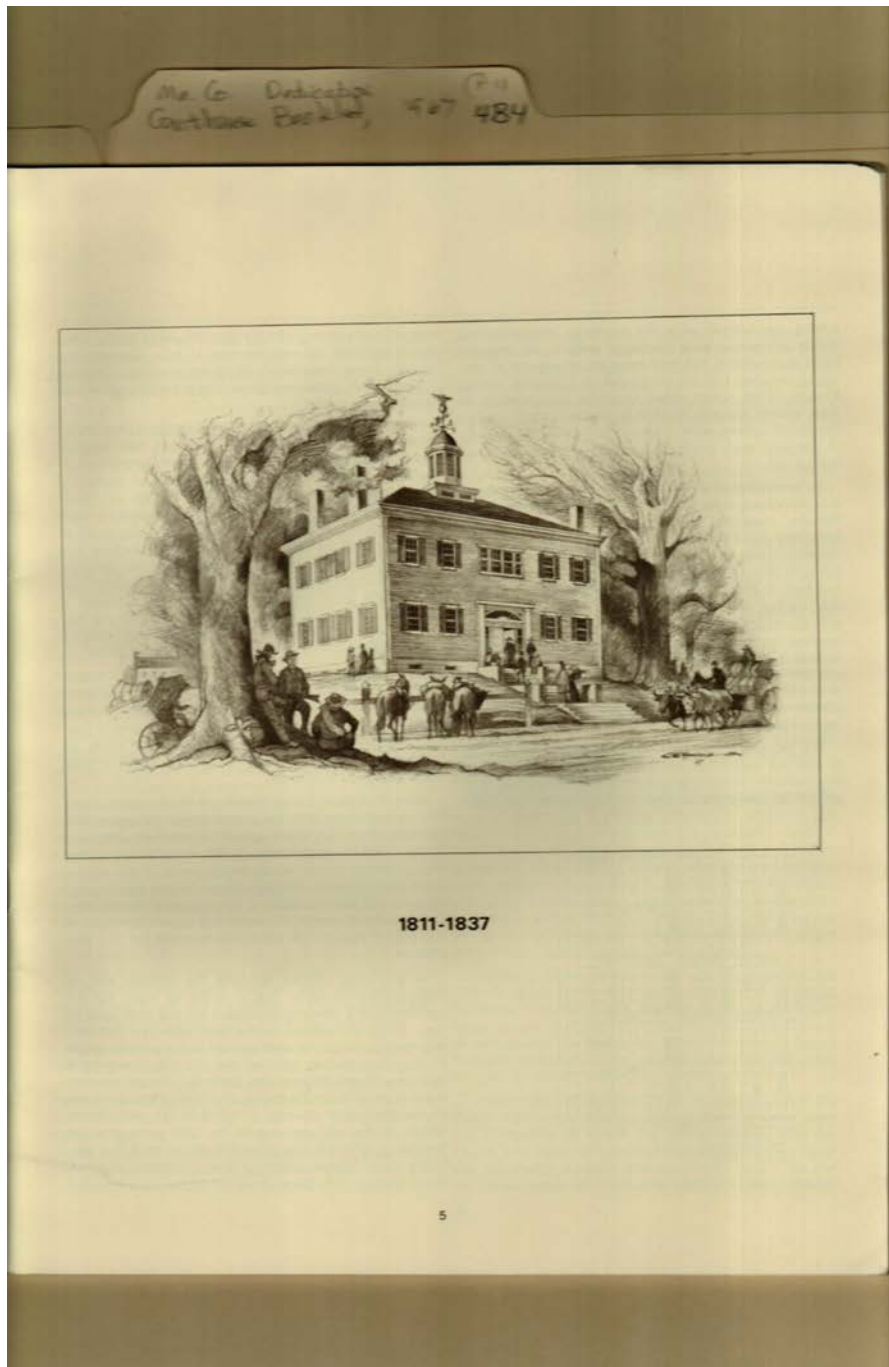
Madison County, AL

Types:

Frances Cabaniss Roberts Collection: Series 4, Subseries B, Box 4, Folder 11

Madison County Courthouse Dedication, 1967 - Madison County Buildings

Image 5 r04b04-11-000-0020 [Contents](#) [Index](#) [About](#)



Names:

Courthouse

Places:

Madison County, AL

Types:

drawing

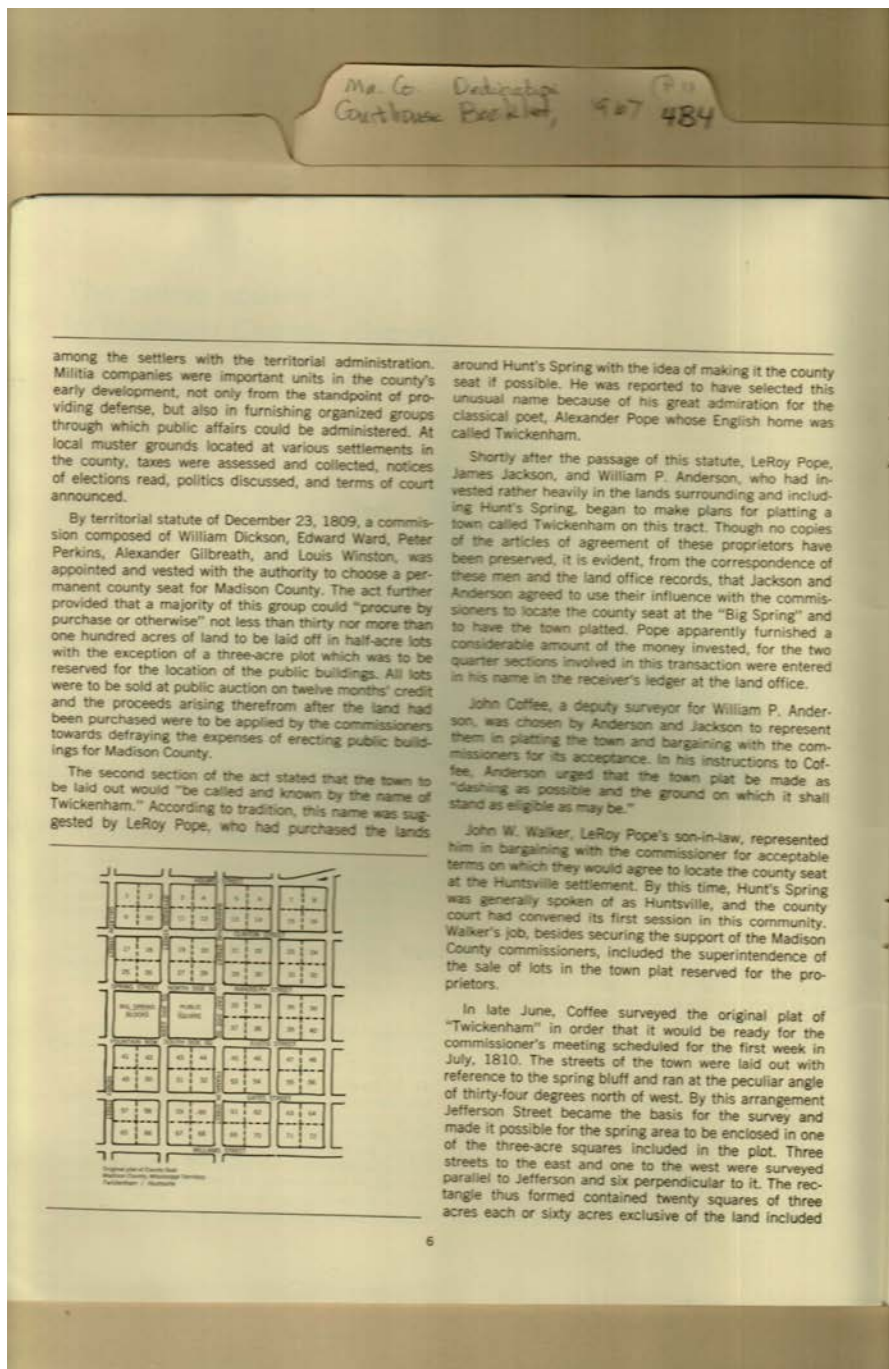
Dates:

1811-1837

Frances Cabaniss Roberts Collection: Series 4, Subseries B, Box 4, Folder 11

Madison County Courthouse Dedication, 1967 - Madison County Buildings

Image 6 r04b04-11-000-0021 [Contents](#) [Index](#) [About](#)



Names:

Anderson, William P.
Coffee, John
Dickson, William
Gilbreath, Alexander

Hunt, John
Jackson, James
Perkins, Peter
Plat of Town

Pope, Alexander
Pope, LeRoy
Walker, John
Williams

Ward, Edward
Winston, Louis

Places:

Madison County, AL

Types:

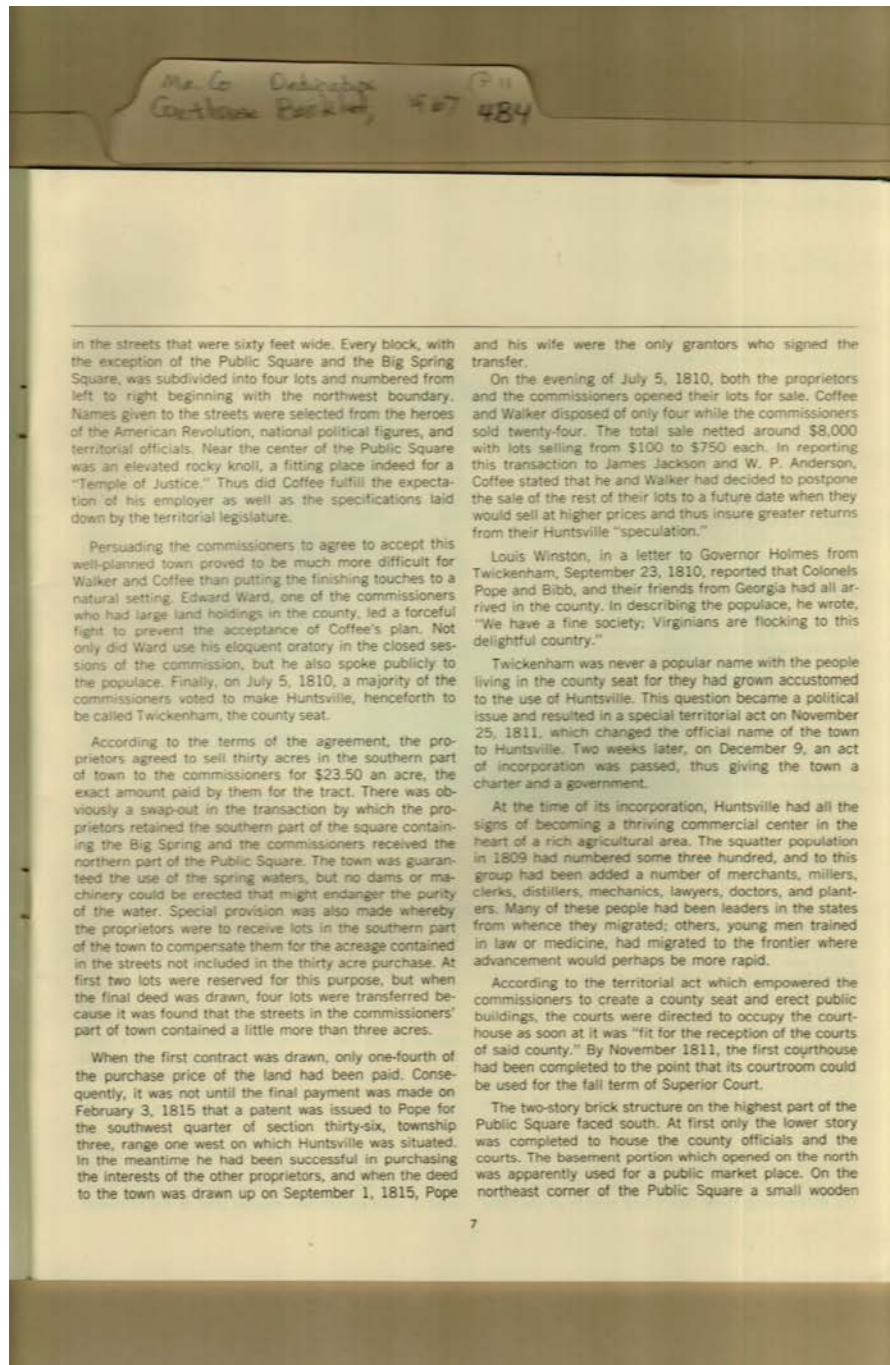
brochure

drawing

Frances Cabaniss Roberts Collection: Series 4, Subseries B, Box 4, Folder 11

Madison County Courthouse Dedication, 1967 - Madison County Buildings

Image 7 r04b04-11-000-0022 [Contents](#) [Index](#) [About](#)



Names:

Anderson, William P.
Bibb, Colonel
Coffee,

Holmes, David,
Governor
Jackson, James

Pope, LeRoy, Colonel
Walker,
Ward, Edward

Winston, Louis

Places:

Madison County, AL

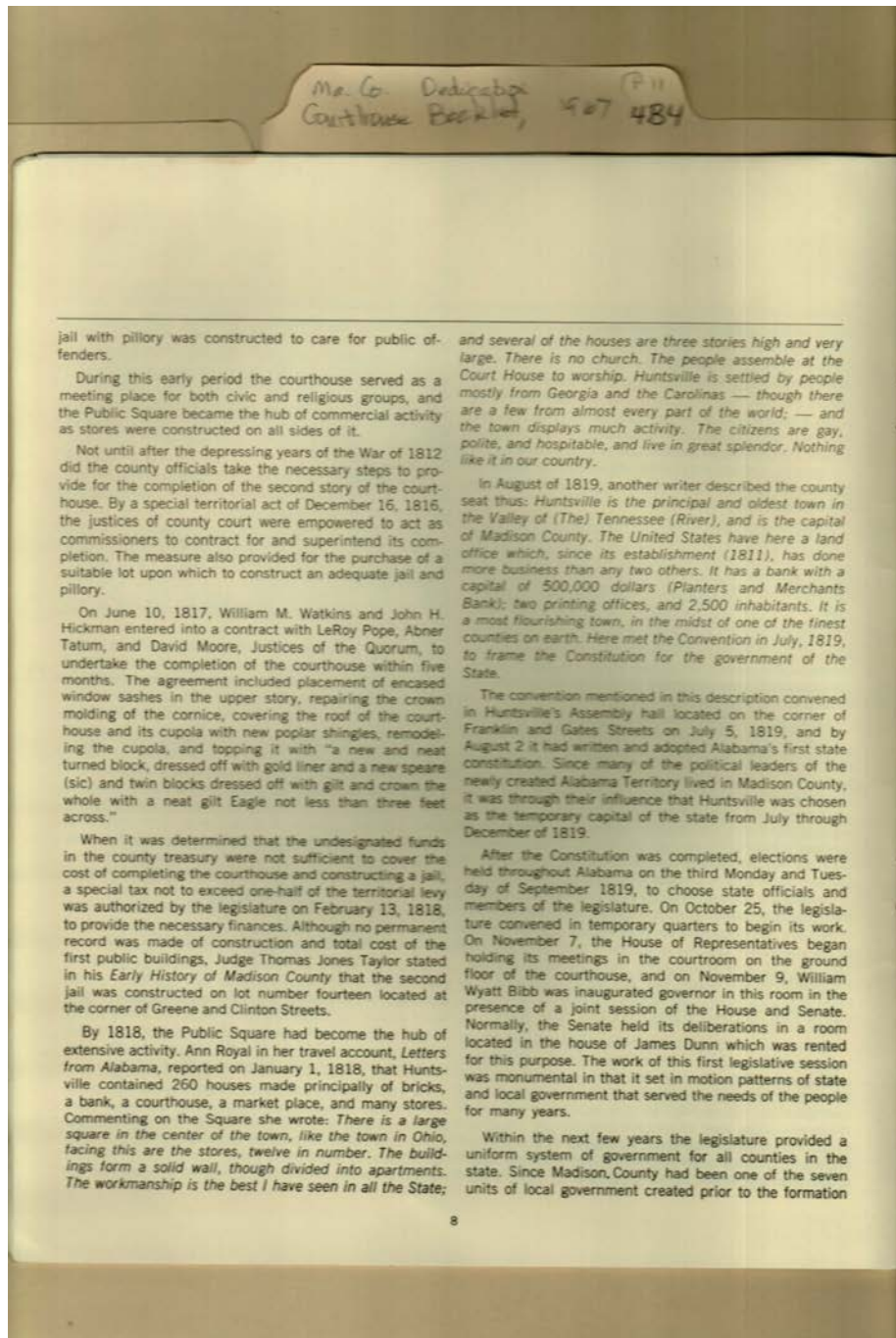
Types:

brochure

Frances Cabaniss Roberts Collection: Series 4, Subseries B, Box 4, Folder 11

Madison County Courthouse Dedication, 1967 - Madison County Buildings

Image 8 r04b04-11-000-0023 [Contents](#) [Index](#) [About](#)



Names:

Bibb, William Wyatt
Dunn, James
Hickman, John H.

Moore, David
Pope, LeRoy
Royal, Ann

Tatum, Abner
Taylor, Thomas
Jones, Judge

Watkins, William M.
Early History of
Madison County

Places:

Madison County, AL

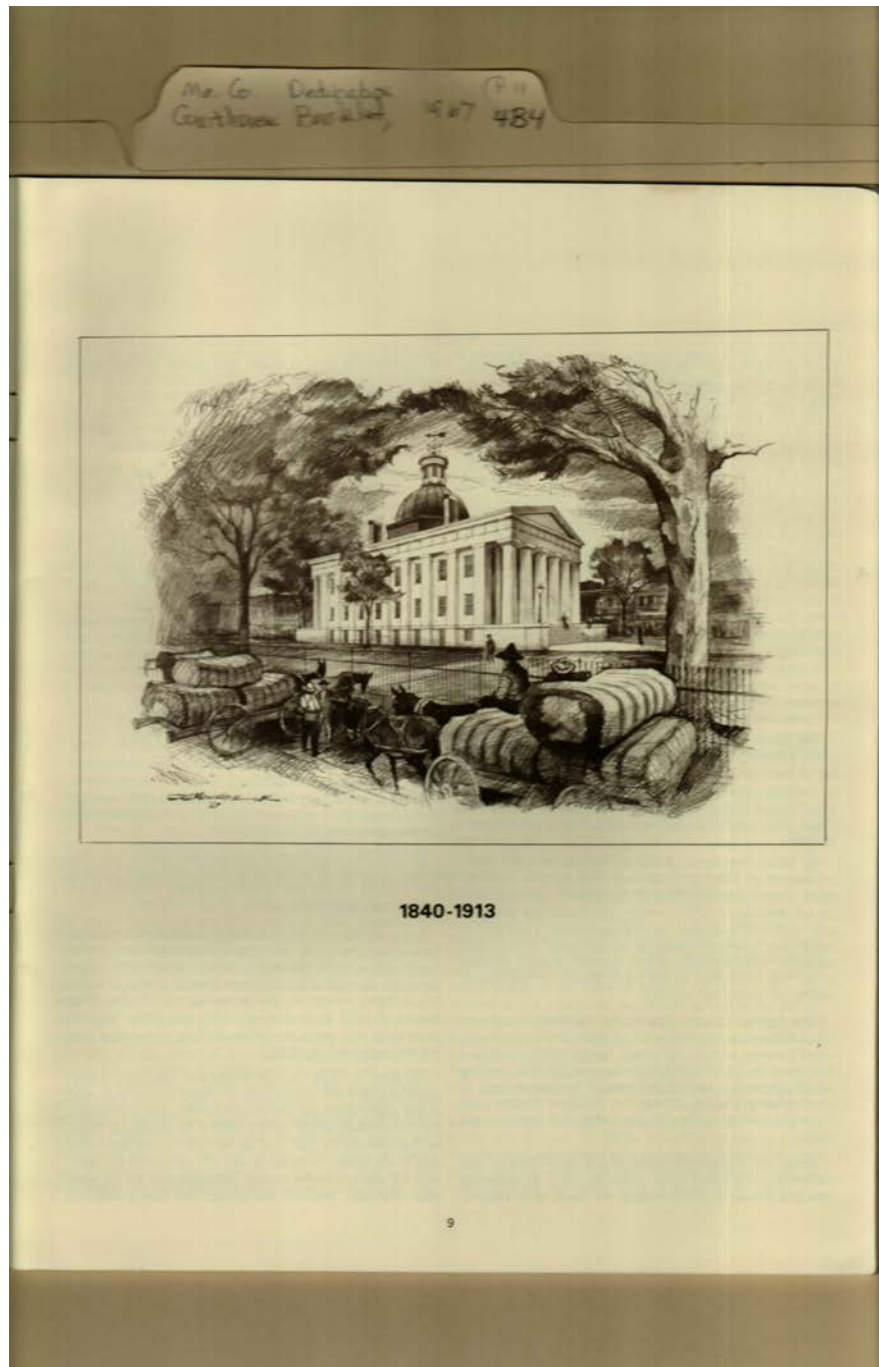
Types:

brochure

Frances Cabaniss Roberts Collection: Series 4, Subseries B, Box 4, Folder 11

Madison County Courthouse Dedication, 1967 - Madison County Buildings

Image 9 r04b04-11-000-0024 [Contents](#) [Index](#) [About](#)



Names:

Courthouse

Places:

Madison County, AL

Types:

drawing

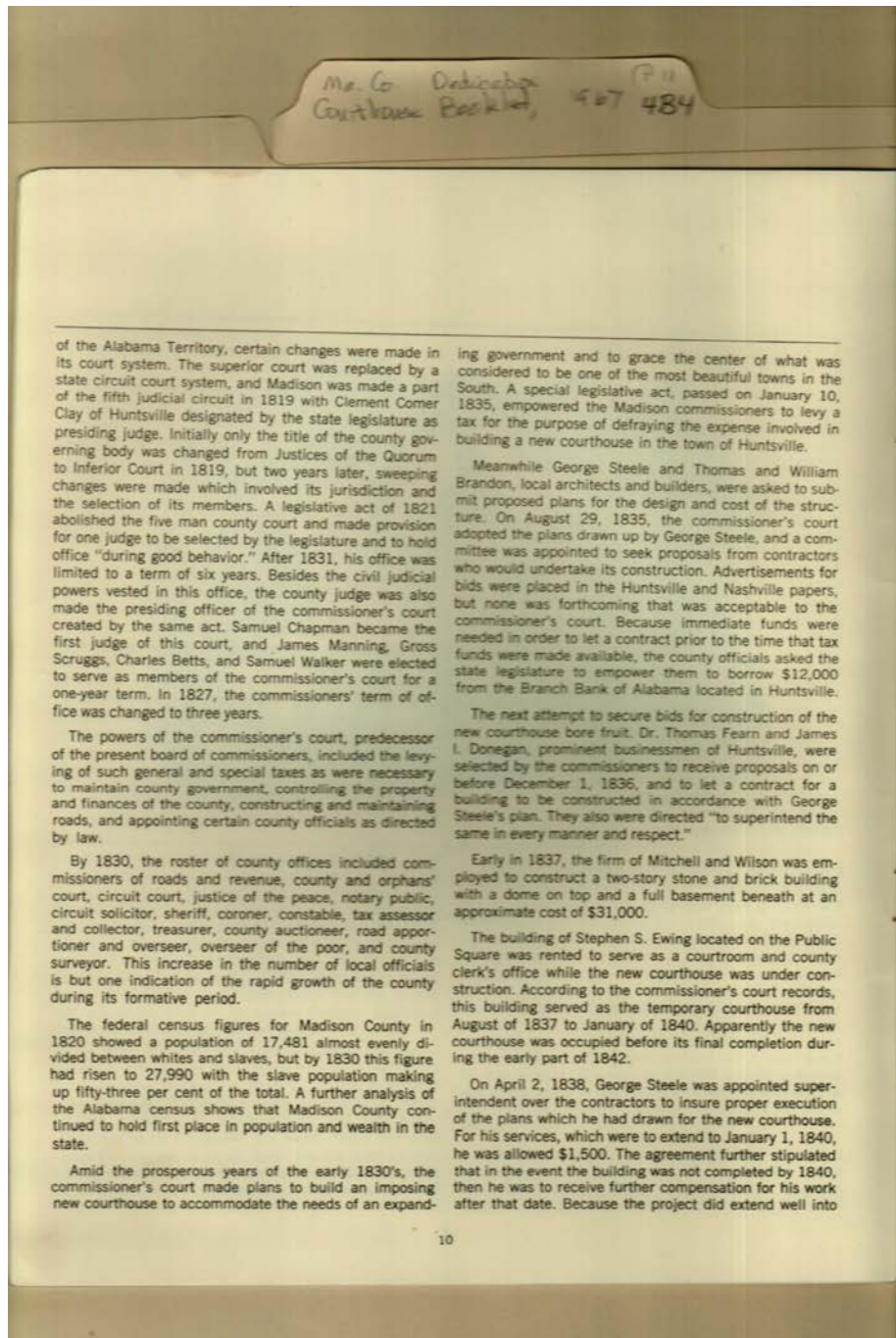
Dates:

1840-1913

Frances Cabaniss Roberts Collection: Series 4, Subseries B, Box 4, Folder 11

Madison County Courthouse Dedication, 1967 - Madison County Buildings

Image 10 r04b04-11-000-0025 [Contents](#) [Index](#) [About](#)



Names:

Betts, Charles
Brandon, Thomas
Brandon, William
Chapman, Samuel

Clay, Clement Comer
Donegan, James I.
Ewing, Stephen S.
Fearn, Thomas, Dr.

Manning, James
Mitchell,
Scruggs, Gross
Steele, George

Walker, Samuel
Wilson,

Places:

Madison County, AL

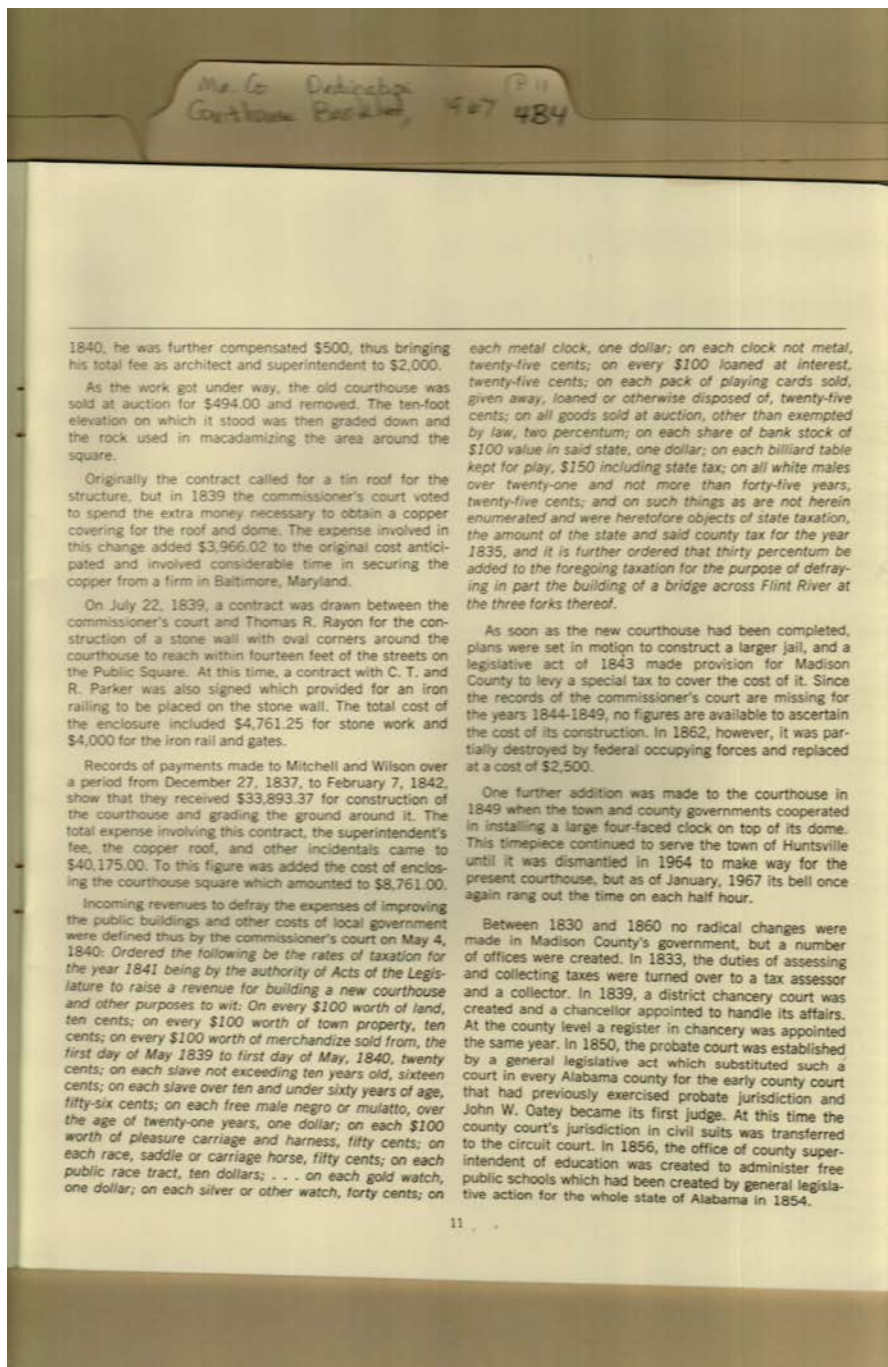
Types:

brochure

Frances Cabaniss Roberts Collection: Series 4, Subseries B, Box 4, Folder 11

Madison County Courthouse Dedication, 1967 - Madison County Buildings

Image 11 r04b04-11-000-0026 [Contents](#) [Index](#) [About](#)



Names:

Mitchell,
Oatey, John W.

Parker, C. T.
Parker, R.

Rayon, Thomas R.
Wilson,

Places:

Madison County, AL

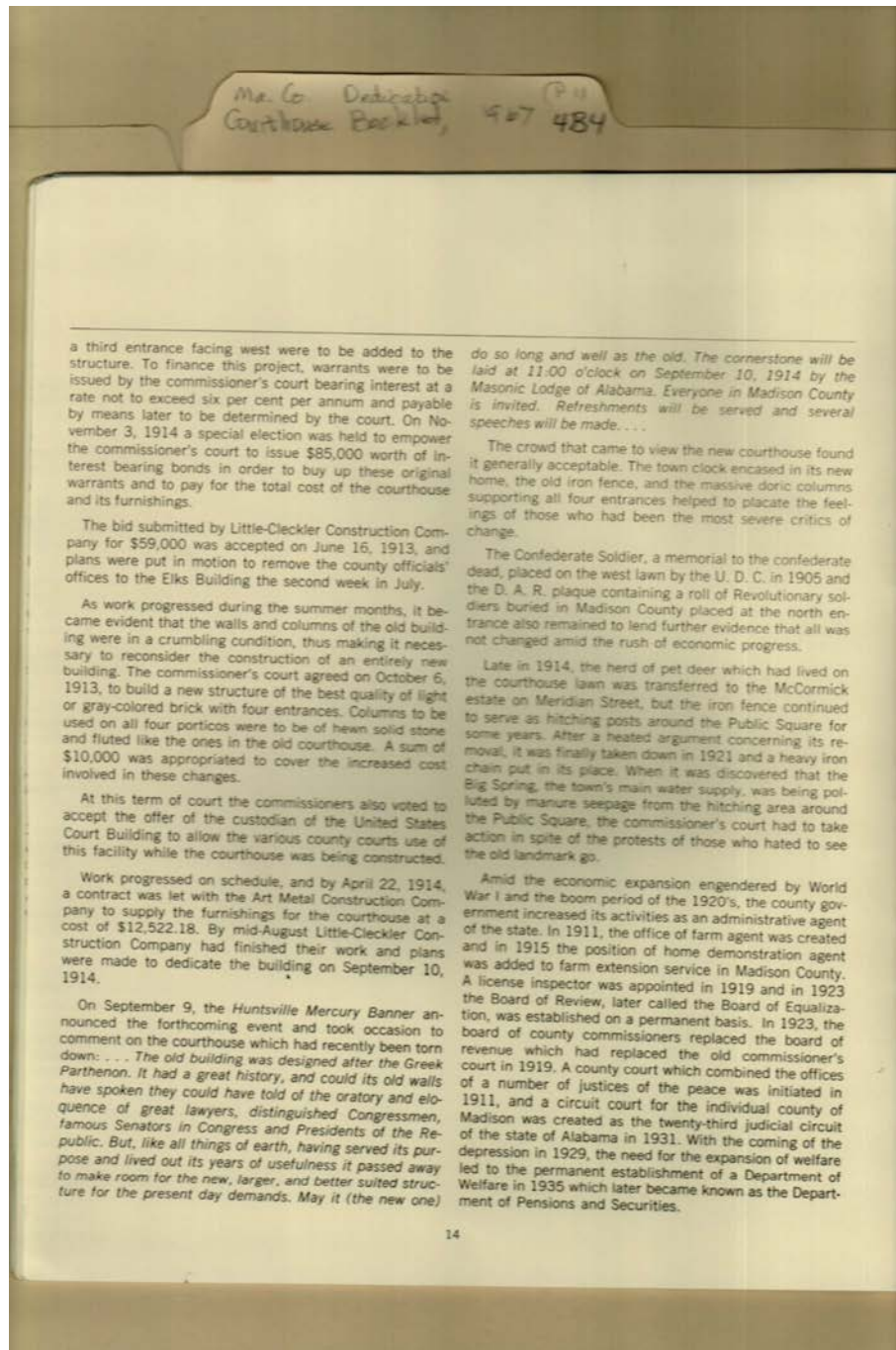
Types:

brochure

Frances Cabaniss Roberts Collection: Series 4, Subseries B, Box 4, Folder 11

Madison County Courthouse Dedication, 1967 - Madison County Buildings

Image 12 r04b04-11-000-0027 [Contents](#) [Index](#) [About](#)



Names:

Art Metal
Construction Co.

Little-Cleckler
Construction Co.

Places:

Madison County, AL

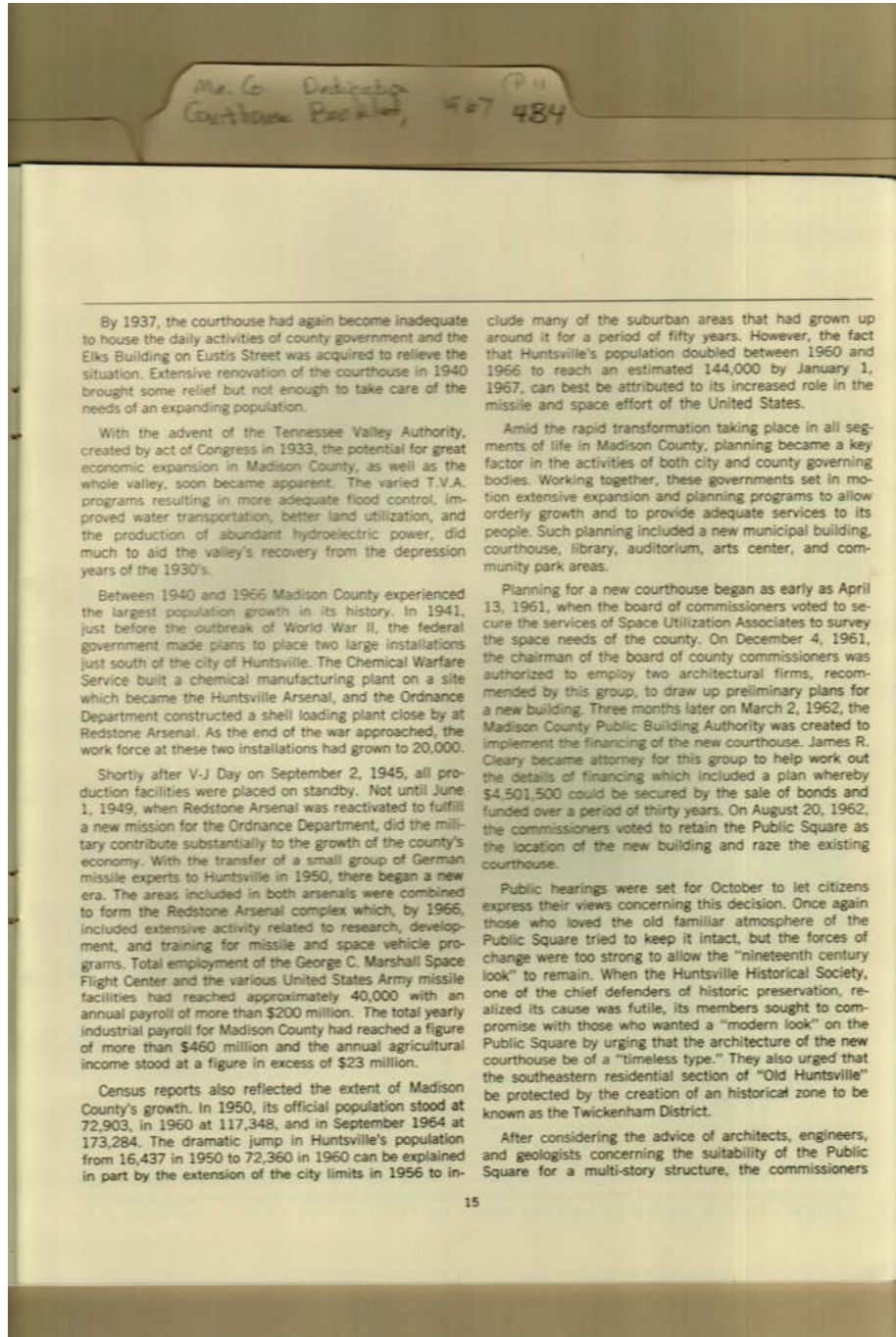
Types:

brochure

Frances Cabaniss Roberts Collection: Series 4, Subseries B, Box 4, Folder 11

Madison County Courthouse Dedication, 1967 - Madison County Buildings

Image 13 r04b04-11-000-0028 [Contents](#) [Index](#) [About](#)



Names:

Huntsville Arsenal

TVA

Places:

Madison County, AL

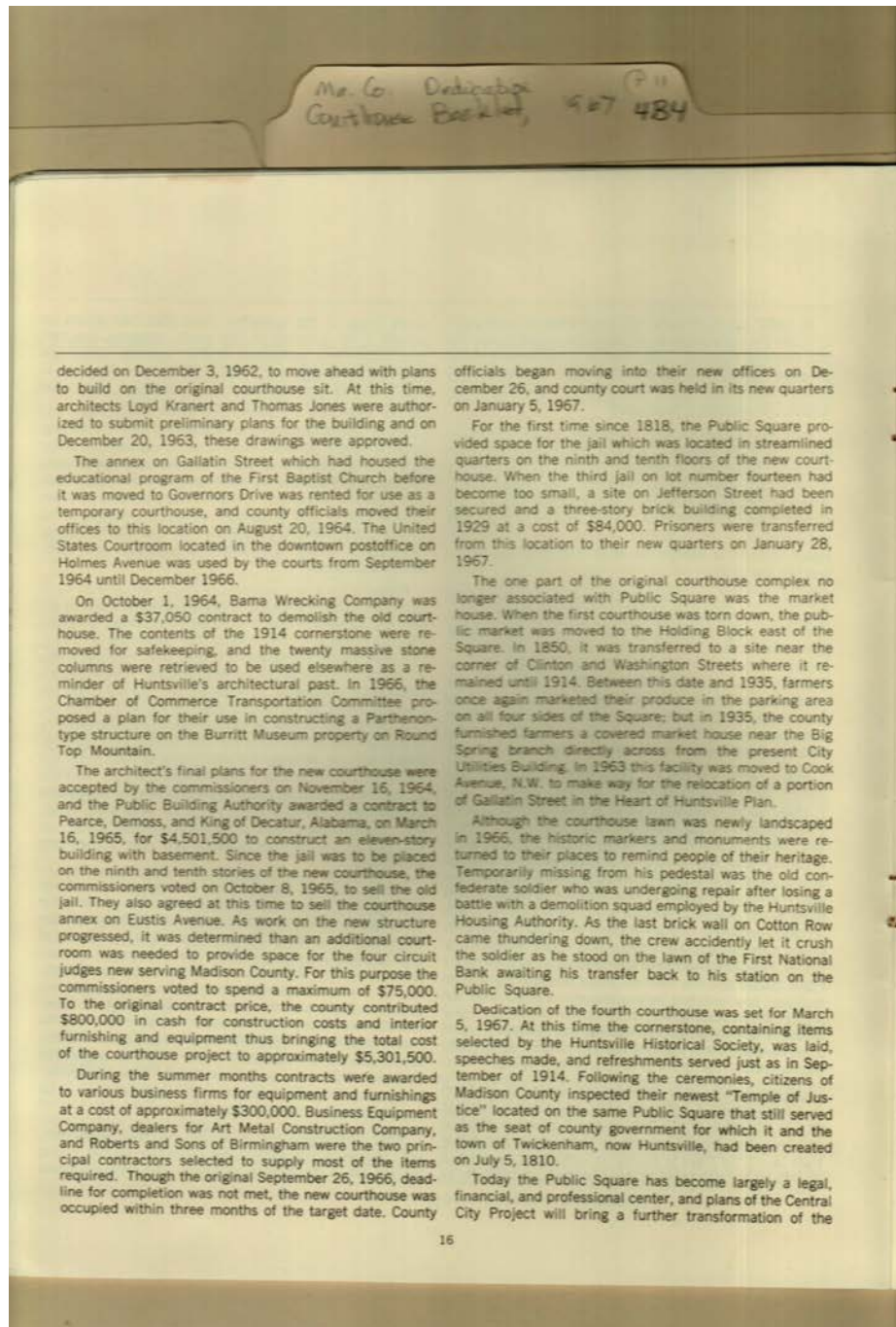
Types:

brochure

Frances Cabaniss Roberts Collection: Series 4, Subseries B, Box 4, Folder 11

Madison County Courthouse Dedication, 1967 - Madison County Buildings

Image 14 r04b04-11-000-0029 [Contents](#) [Index](#) [About](#)



Names:

Bama Wrecking Co.
Jones, Thomas

Kranert, Loyd

Pearce, Demoss and
King

Places:

Madison County, AL

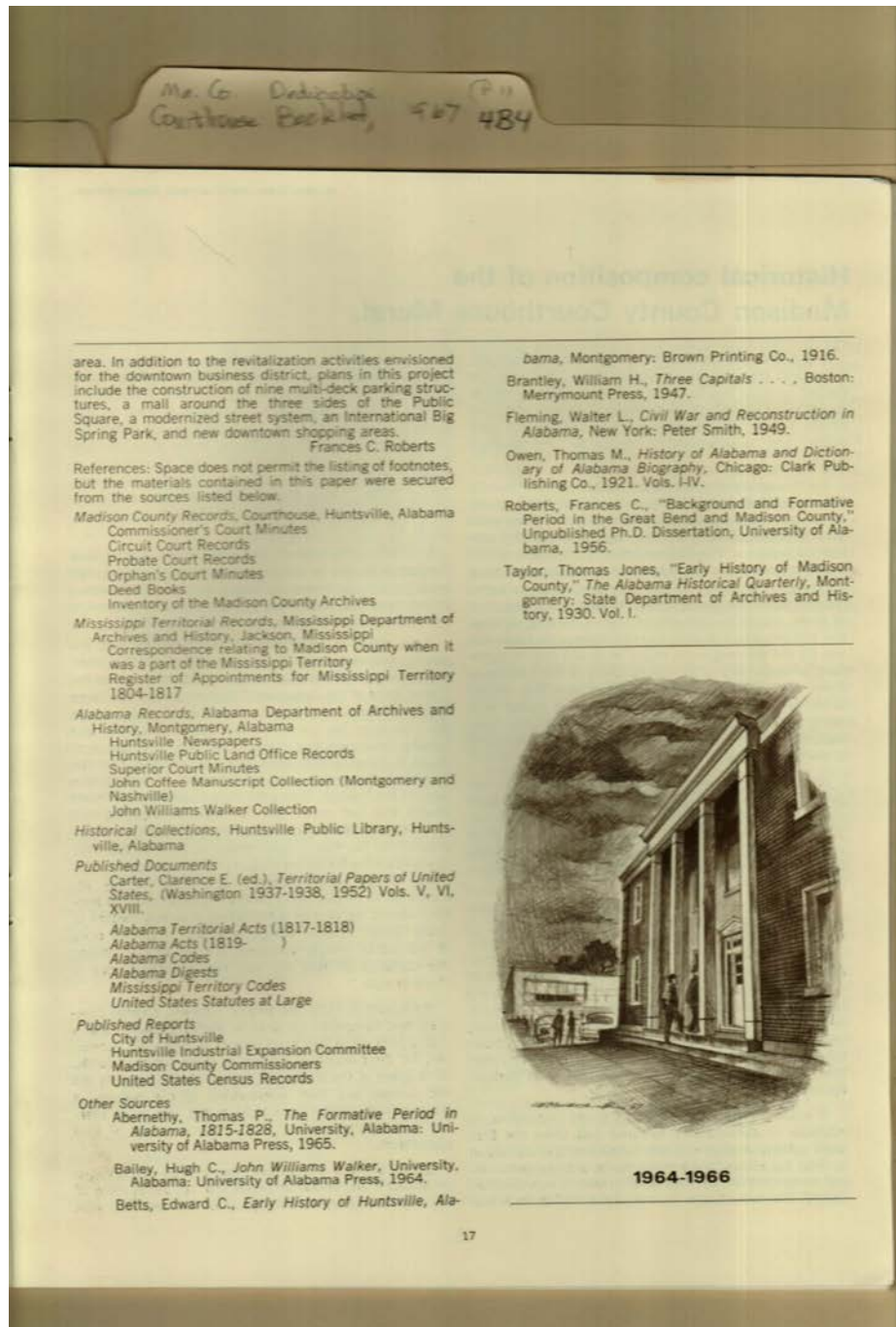
Types:

brochure

Frances Cabaniss Roberts Collection: Series 4, Subseries B, Box 4, Folder 11

Madison County Courthouse Dedication, 1967 - Madison County Buildings

Image 15 r04b04-11-000-0030 [Contents](#) [Index](#) [About](#)



Names:

Roberts, Frances C.

Temporary
Courthouse

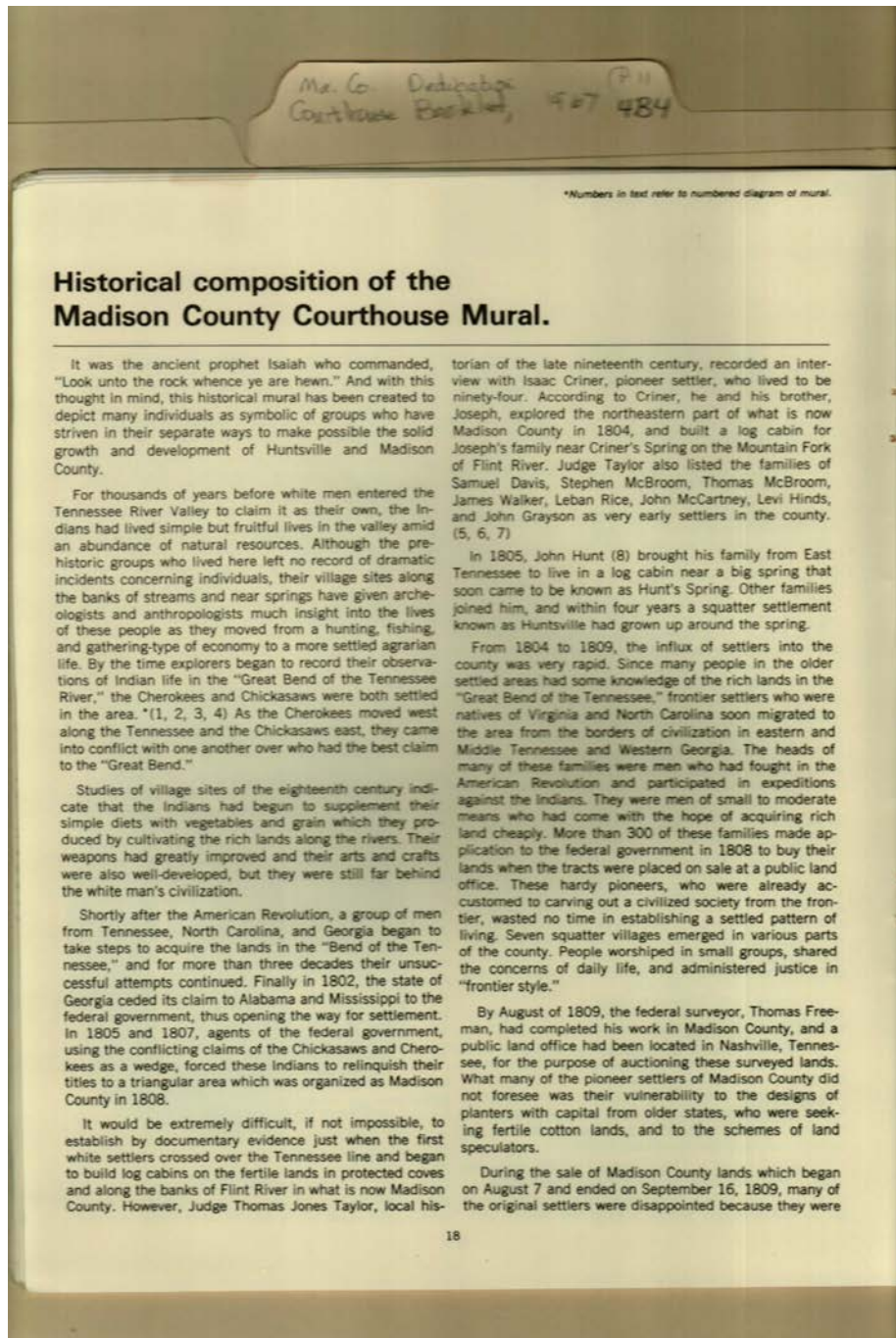
Places:

Madison County, AL

Types:

brochure

drawing



Names:

Criner, Isaac
Criner, Joseph
Davis, Samuel
Freeman, Thomas

Grayson, John
Hinds, Levi
Hunt, John
McBroom, Stephen

McBroom, Thomas
McCartney, John
Mural Historical
Composition

Rice, Leban
Taylor, Thomas
Jones, Judge
Walker, James

Places:

Madison County, AL

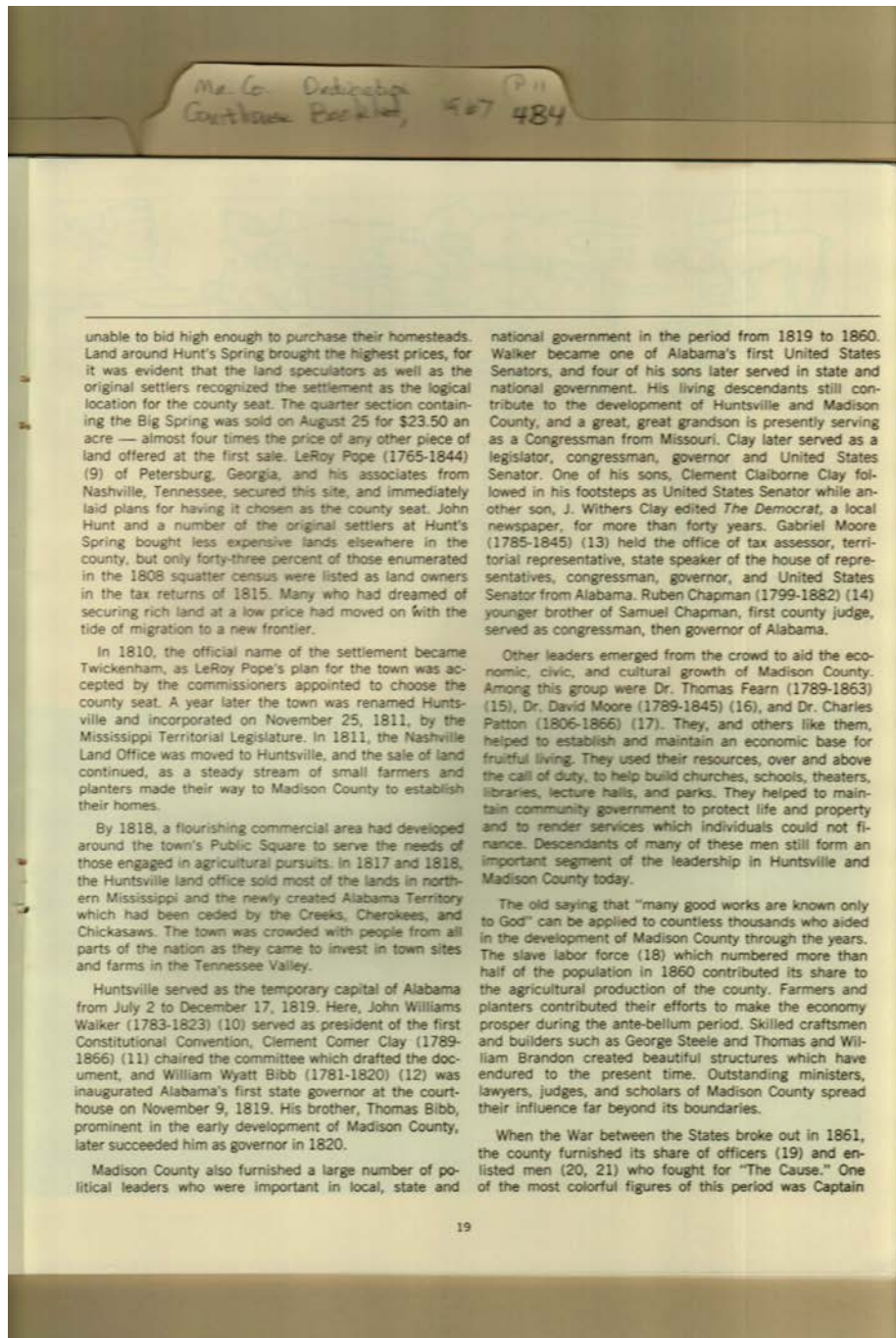
Types:

brochure

Frances Cabaniss Roberts Collection: Series 4, Subseries B, Box 4, Folder 11

Madison County Courthouse Dedication, 1967 - Madison County Buildings

Image 17 r04b04-11-000-0032 [Contents](#) [Index](#) [About](#)



Names:

Bibb, Thomas
Bibb, William Wyatt
Brandon, Thomas
Brandon, William
Chapman, Reuben

Chapman, Samuel
Clay, Clement
Claiborne
Clay, Clement Comer
Clay, J. Withers

Fearn, Thomas, Dr.
Hunt, John
Moore, David, Dr.
Moore, Gabriel
Patton, Charles, Dr.

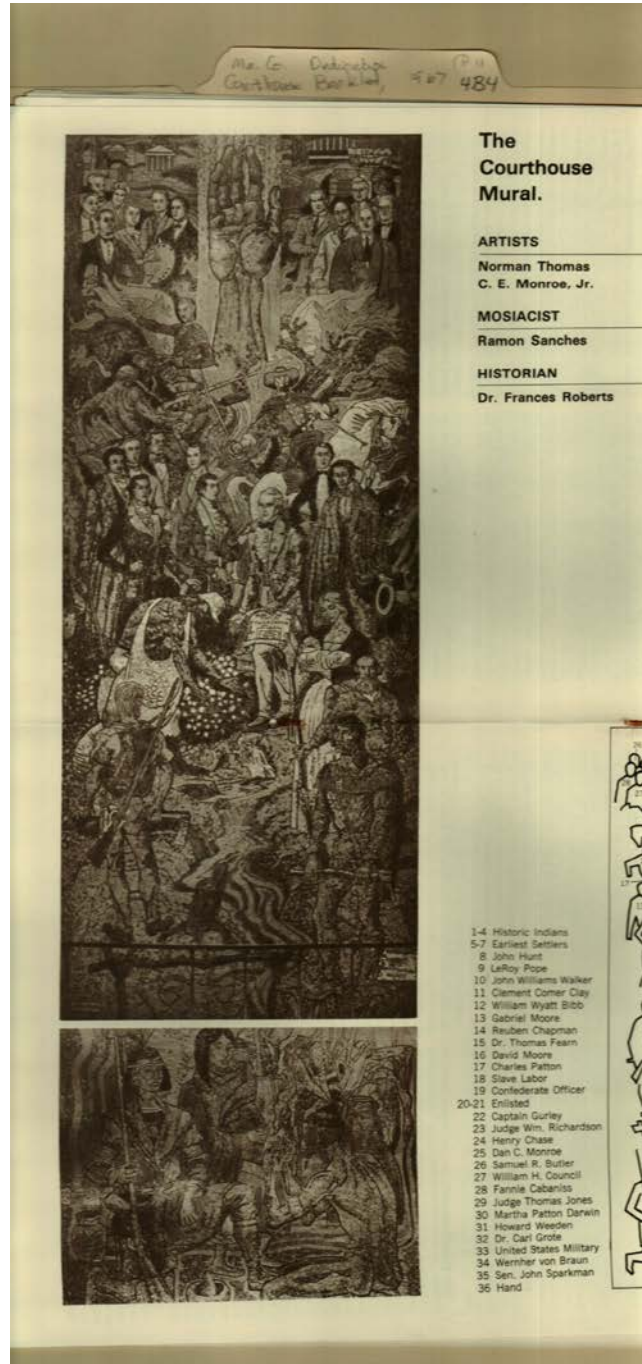
Pope, LeRoy
Steele, George
Walker, John
Williams

Places:

Madison County, AL

Types:

brochure



Names:

Butler, Samuel R.
 Cabaniss, Fannie
 Chase, Henry C.
 Cherokee Indians
 Chickasaw Indians
 Council, William H.
 Courthouse Mural

Criner, Isaac
 Darwin, Martha
 Grote, Carl, Dr.
 Gurley, Frank,
 Captain
 Hunt, John
 Jones, Thomas, Judge

Monroe, C. E., Jr.
 Monroe, Dan C.
 Notes on Mural
 Pope, LeRoy
 Richardson, William,
 Judge
 Roberts, Frances, Dr.

Sanches, Ramon
 Sparkman, John,
 Senator
 Thomas, Norman
 von Braun, Wernher,
 Dr.

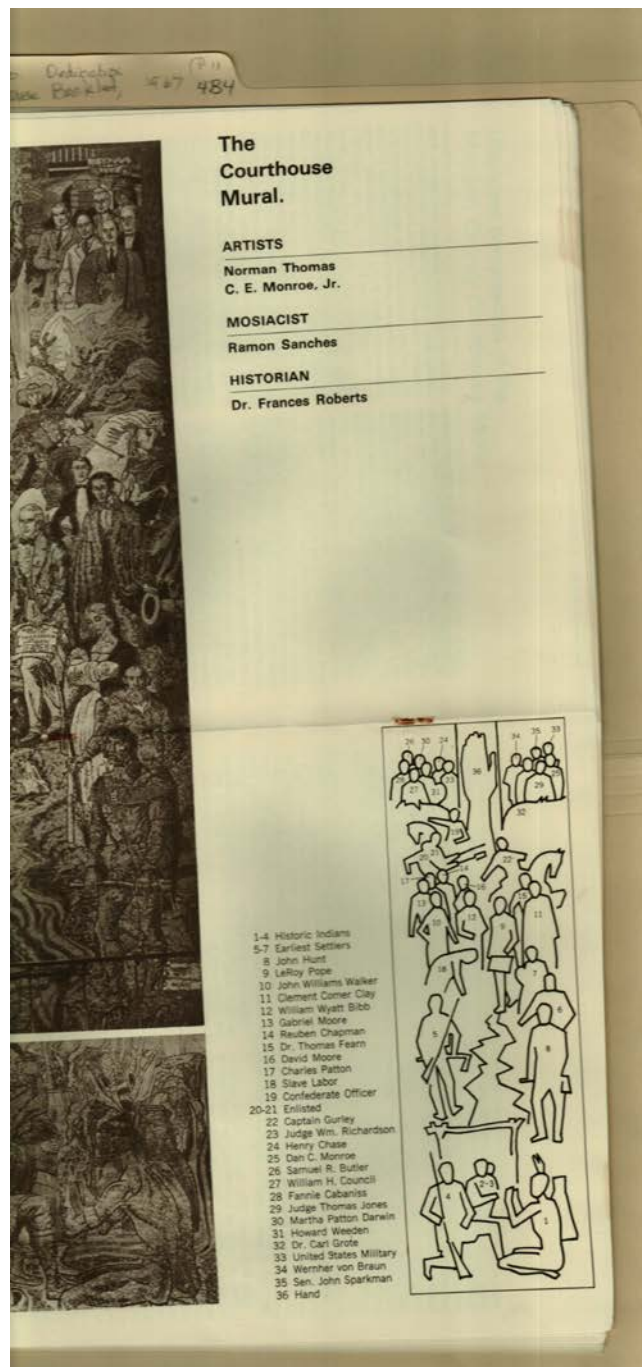
Places:

Madison County, AL

Types:

brochure

photo



Names:

Courthouse Mural

Places:

Madison County, AL

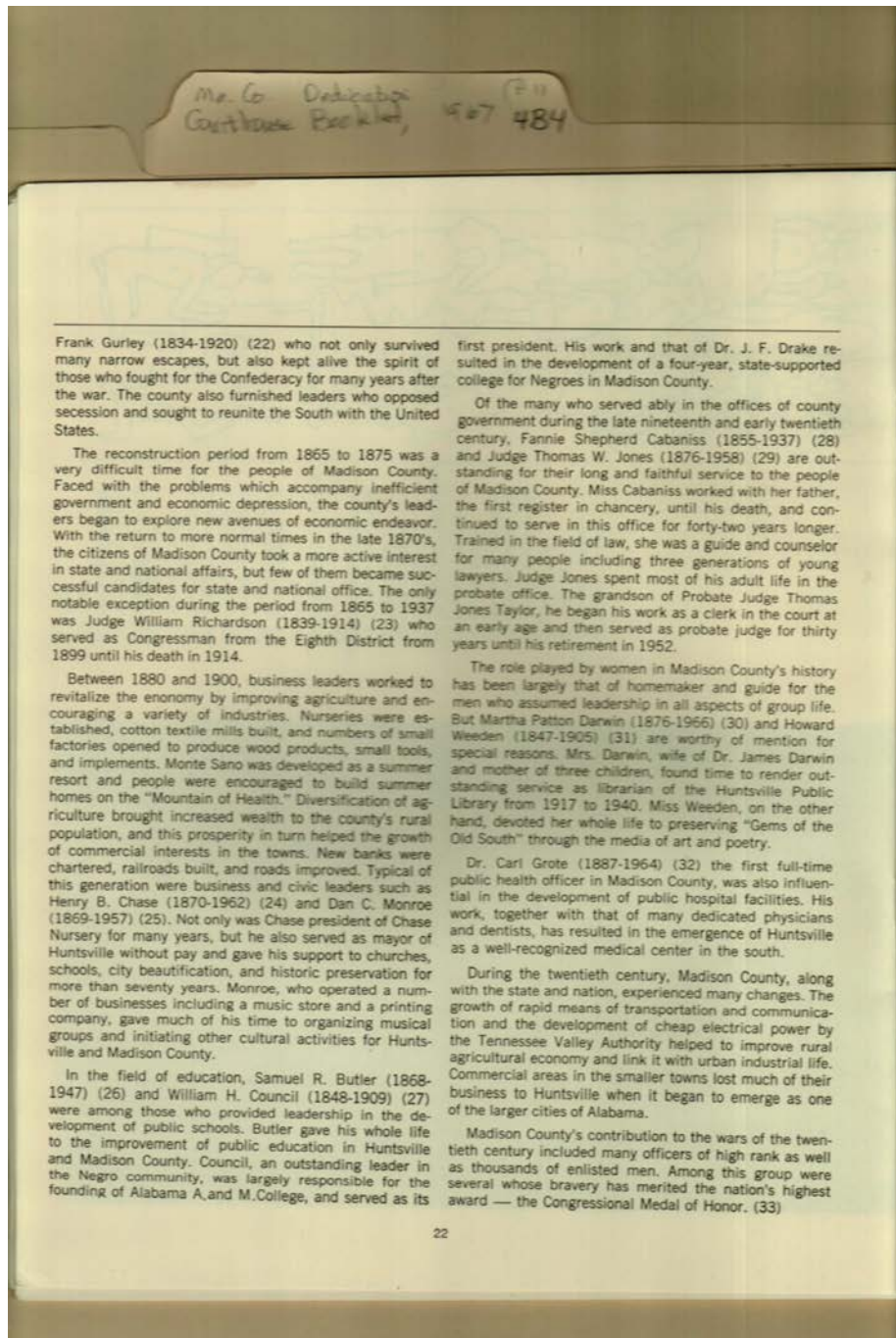
Types:

photo

Frances Cabaniss Roberts Collection: Series 4, Subseries B, Box 4, Folder 11

Madison County Courthouse Dedication, 1967 - Madison County Buildings

Image 20 r04b04-11-000-0035 [Contents](#) [Index](#) [About](#)



Names:

Butler, Samuel R.
Cabaniss, Fannie
Shepherd
Chase, Henry C.
Council, William H.

Darwin, James, Dr.
Darwin, Martha
Patton
Drake, J. F., Dr.
Grote, Carl, Dr.

Gurley, Frank,
Captain
Jones, Thomas W.,
Judge
Monroe, Dan C.

Richardson, William,
Judge
Taylor, Thomas
Jones, Judge
Weeden, Howard

Places:

Madison County, AL

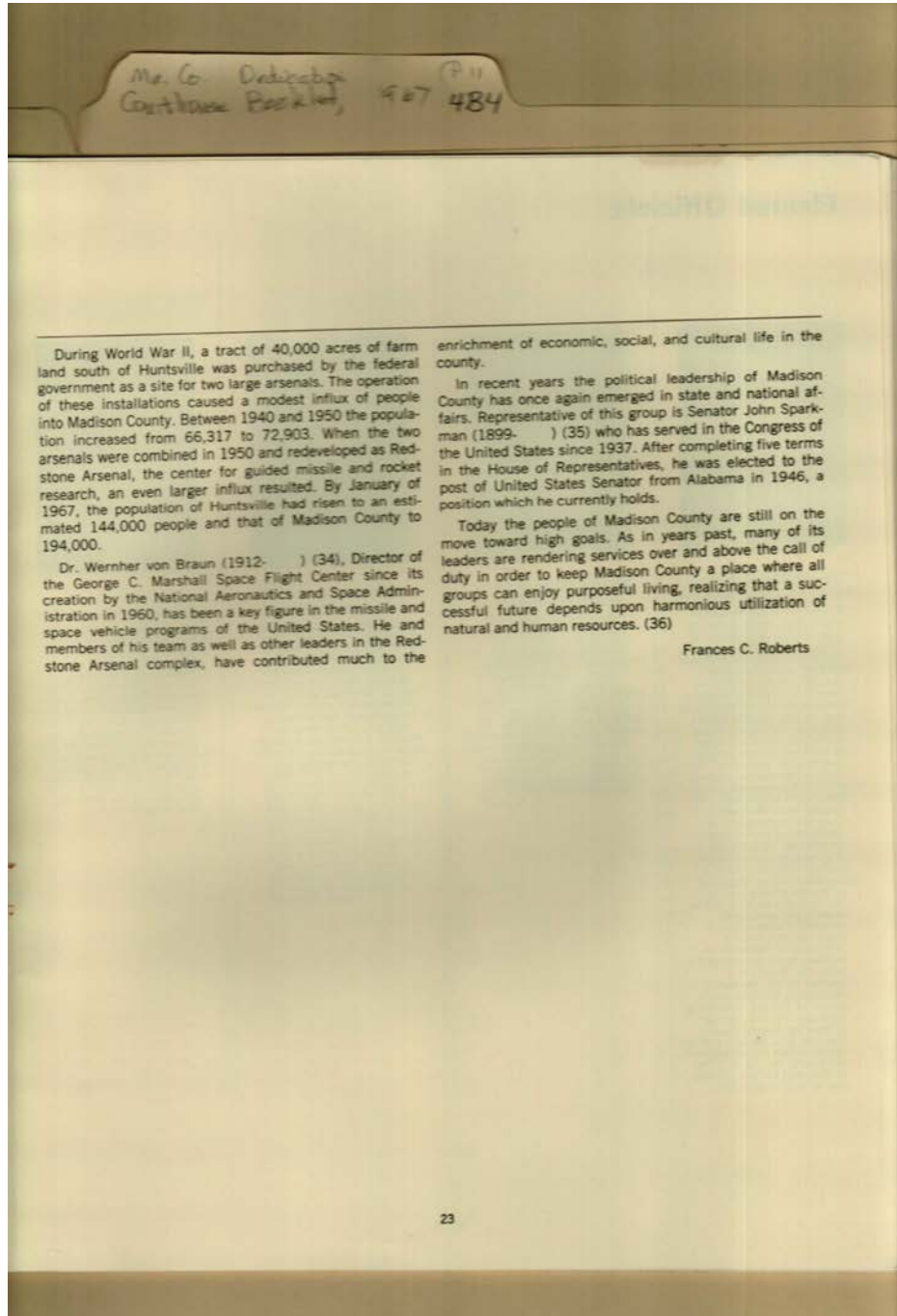
Types:

brochure

Frances Cabaniss Roberts Collection: Series 4, Subseries B, Box 4, Folder 11

Madison County Courthouse Dedication, 1967 - Madison County Buildings

Image 21 r04b04-11-000-0036 [Contents](#) [Index](#) [About](#)



Names:

Roberts, Frances C.

Sparkman, John,
Senator

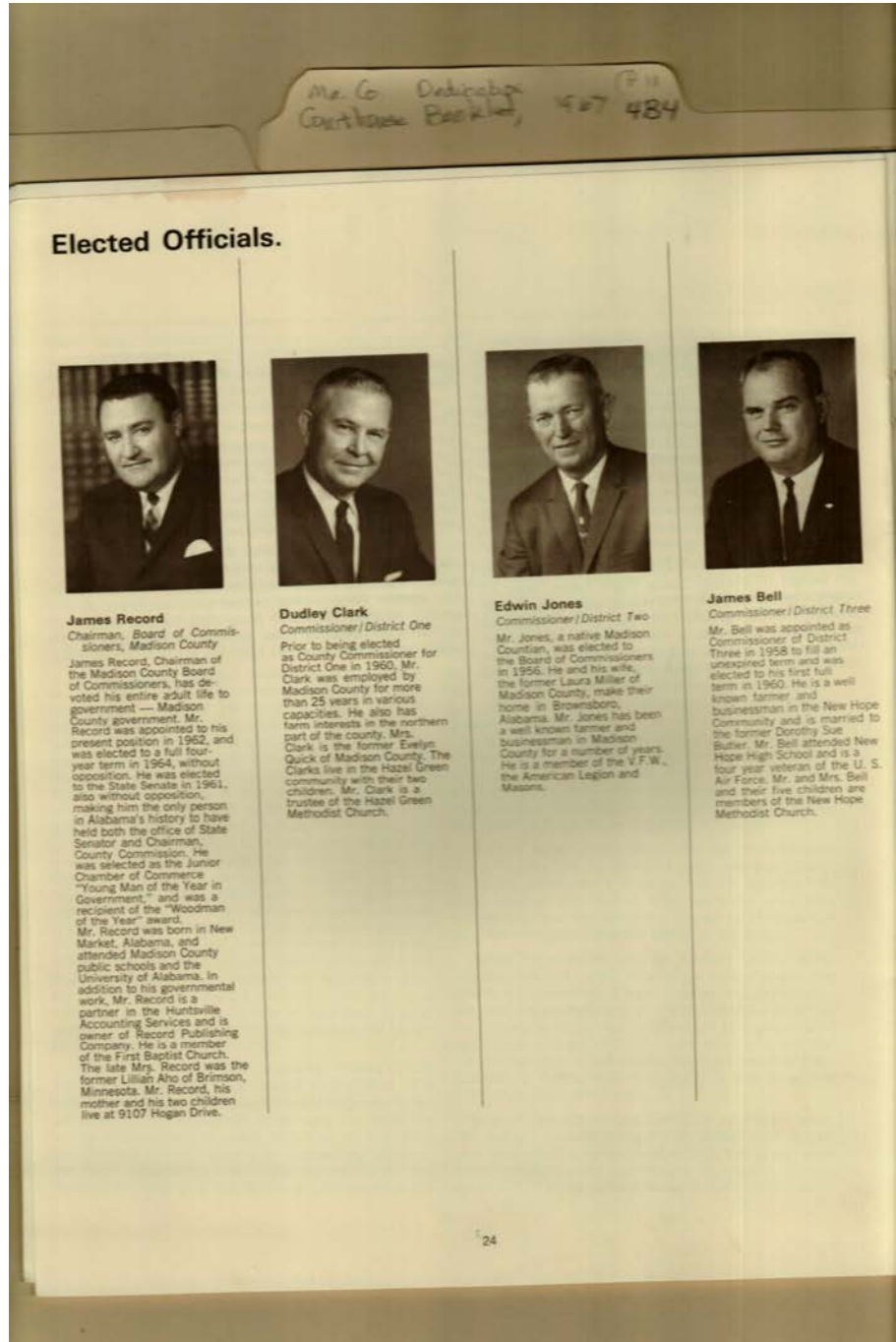
von Braun, Wernher,
Dr.

Places:

Madison County, AL

Types:

brochure



Names:

Bell, James
 Clark, Dudley

Elected Officials
 Jones, Edwin

Record, James

Places:

Madison County, AL

Types:

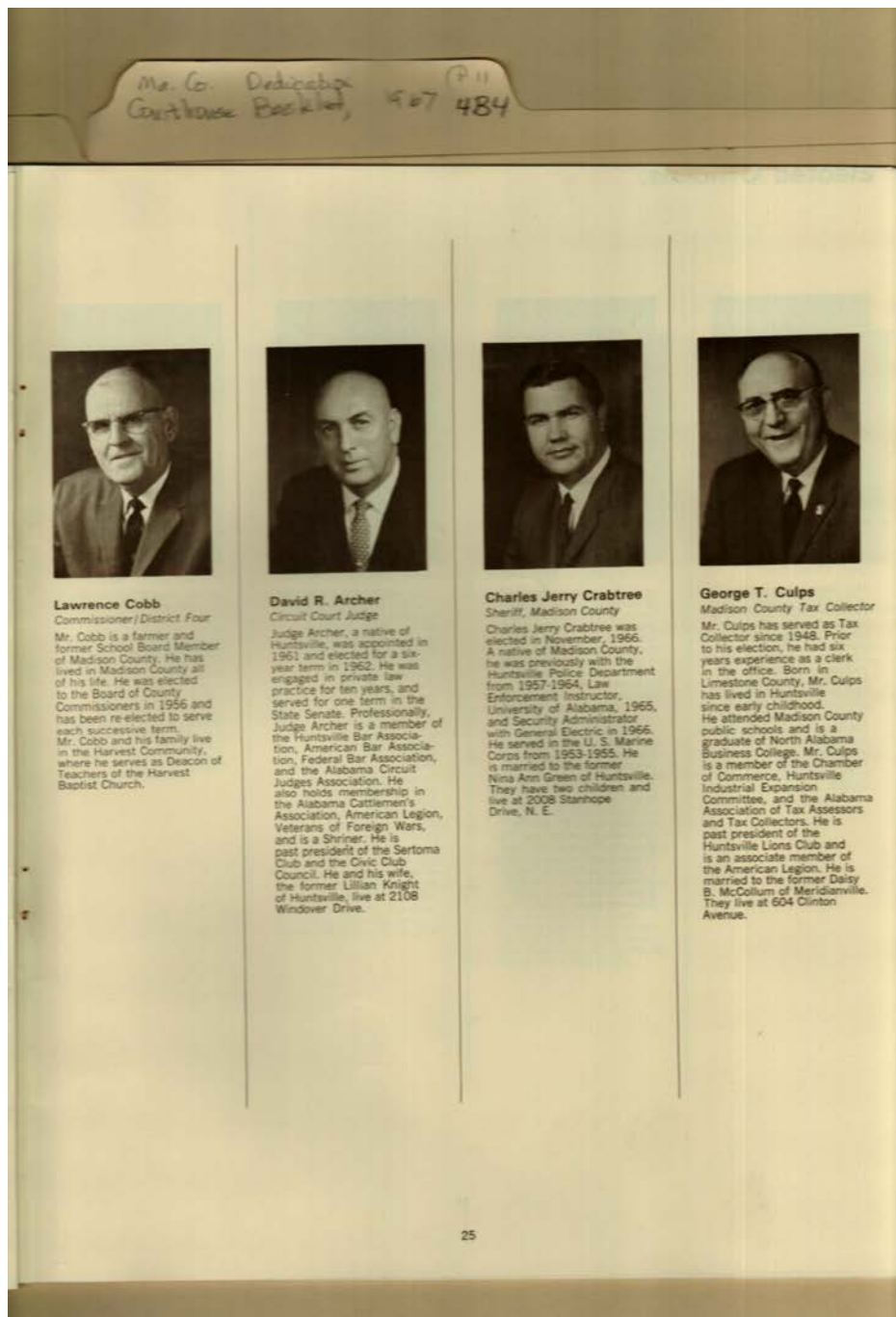
brochure

photo

Frances Cabaniss Roberts Collection: Series 4, Subseries B, Box 4, Folder 11

Madison County Courthouse Dedication, 1967 - Madison County Buildings

Image 23 r04b04-11-000-0038 [Contents](#) [Index](#) [About](#)



Names:

Archer, David R.,
Judge

Cobb, Lawrence

Crabtree, Charles
Jerry, Sheriff

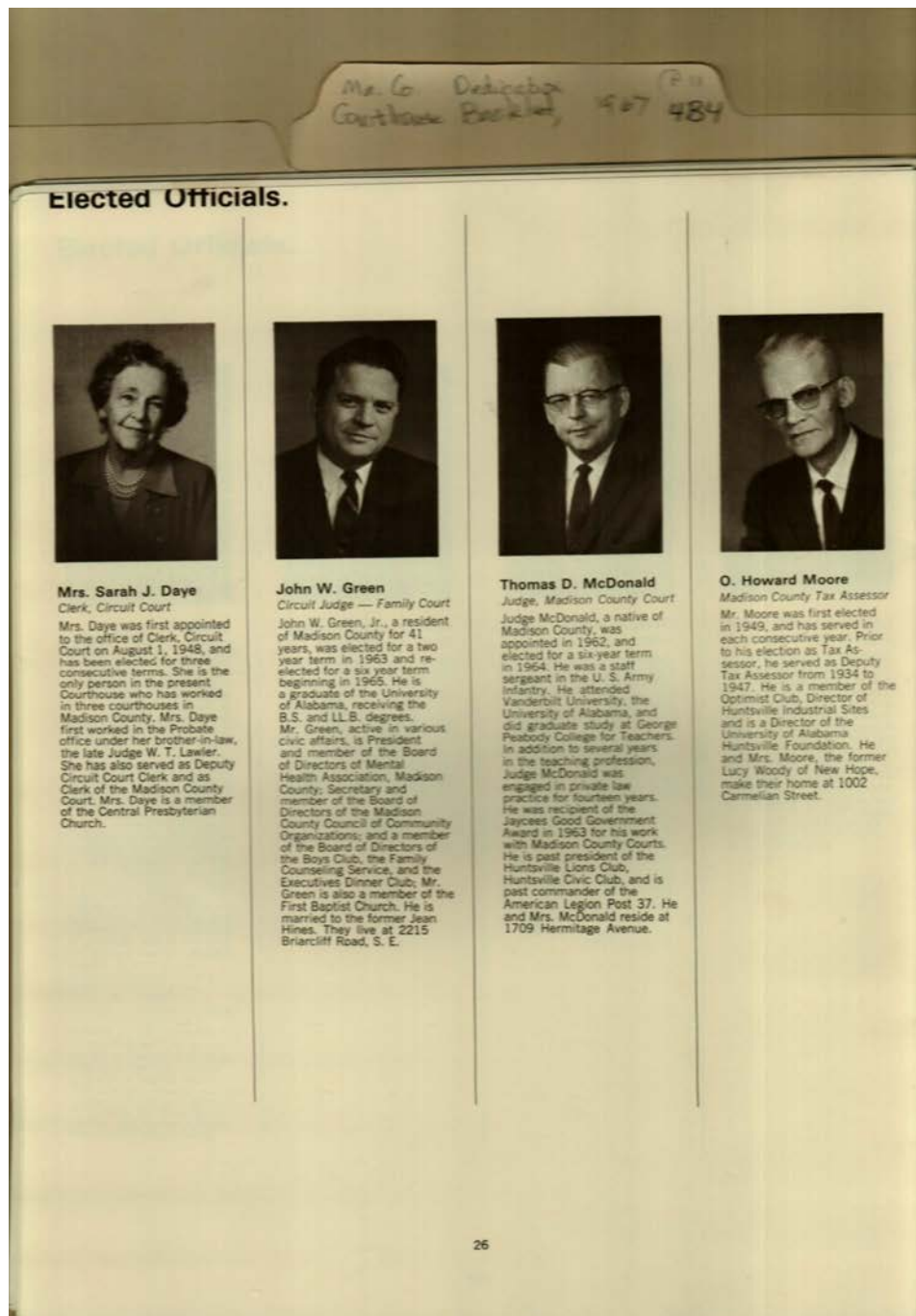
Culps, George T. Tax
collector

Places:

Madison County, AL

Types:

photo



Names:

Daye, Sarah J. Clerk
 Green, John W. Judge

McDonald, Thomas
 D., Judge

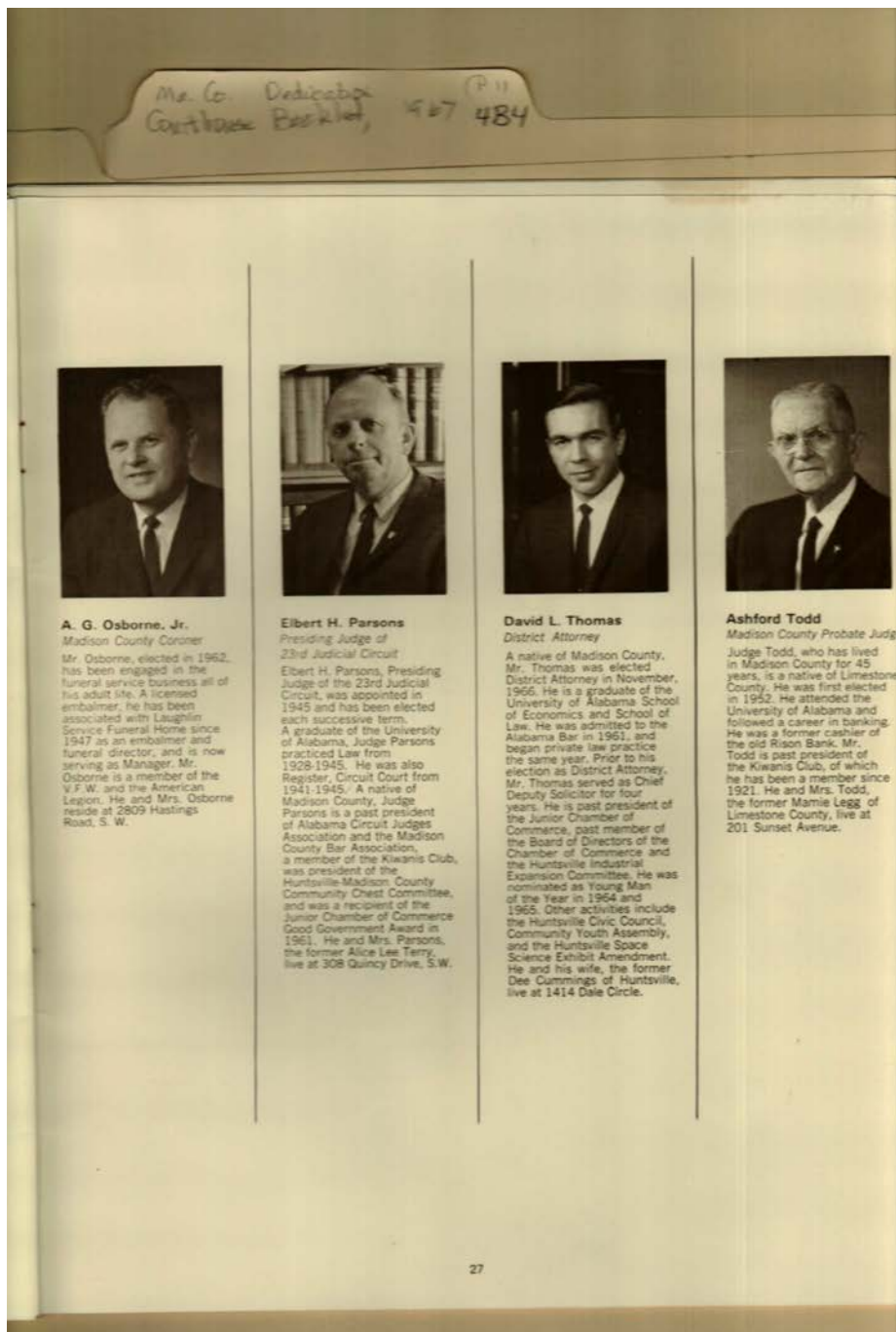
Moore, O. Howard
 tax assessor

Places:

Madison County, AL

Types:

photo



Names:

Osborne, A. G., Jr.
Coroner

Parsons, Elbert H.,
Judge

Thomas, David L.
District Attny

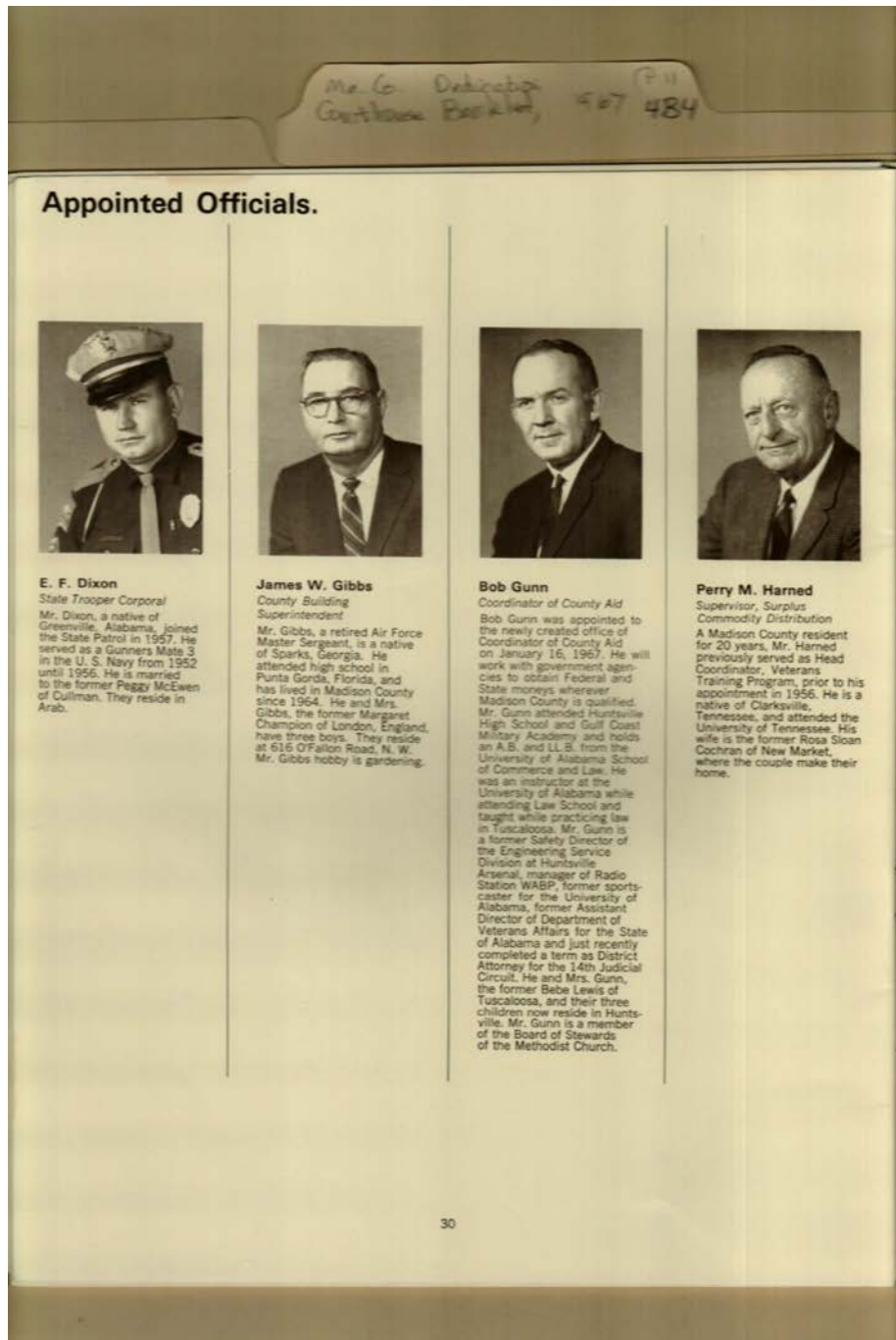
Todd, Ashford,
Probate Judge

Places:

Madison County, AL

Types:

photo



Names:

Appointed Officials
Dixon, E. F.

Gibbs, James W.
Gunn, Bob

Harned, Perry M.

Places:

Madison County, AL

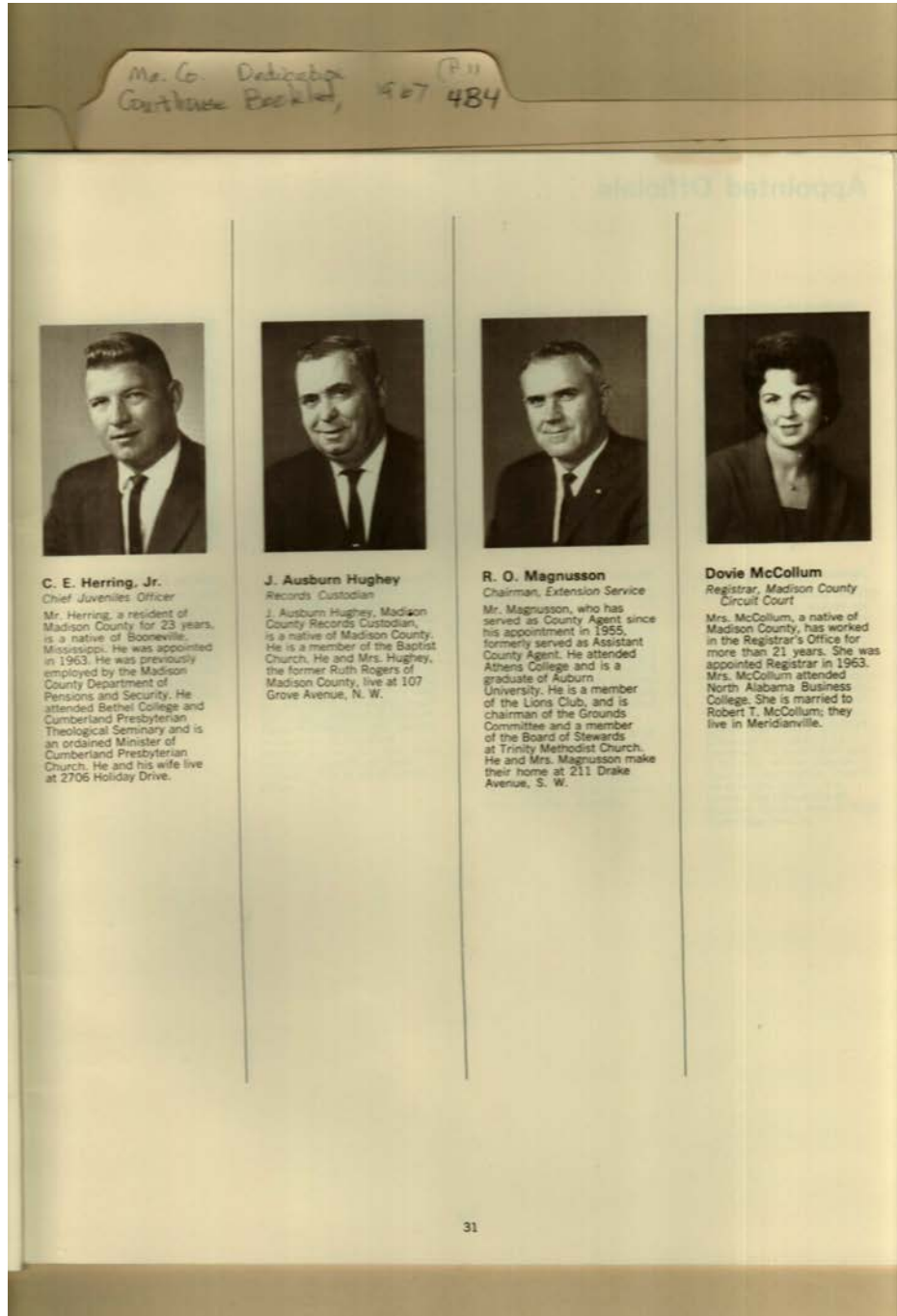
Types:

photo

Frances Cabaniss Roberts Collection: Series 4, Subseries B, Box 4, Folder 11

Madison County Courthouse Dedication, 1967 - Madison County Buildings

Image 27 r04b04-11-000-0042 [Contents](#) [Index](#) [About](#)



Names:

Herring, C. E., Jr.

Hughey, J. Ausburn

Magnusson, R. O.

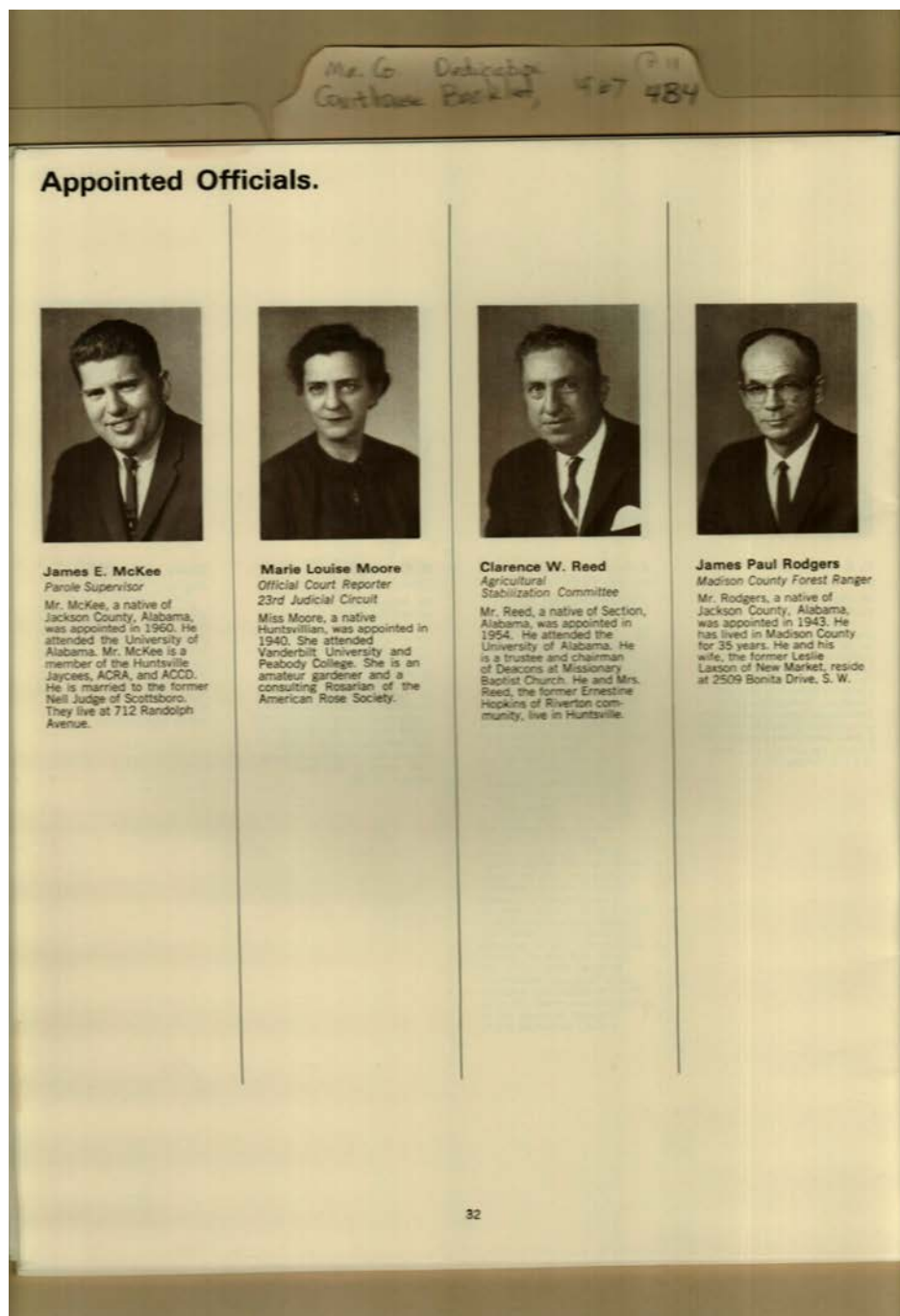
McCollum, Dovie

Places:

Madison County, AL

Types:

photo



Names:

McKee, James E.

Moore, Marie Louise

Reed, Clarence W.

Rodgers, James Paul

Places:

Madison County, AL

Types:

photo

Frances Cabaniss Roberts Collection: Series 4, Subseries B, Box 4, Folder 11

Madison County Courthouse Dedication, 1967 - Madison County Buildings

Image 29 r04b04-11-000-0044 [Contents](#) [Index](#) [About](#)



Names:

Sanders, Emmett

Stamper, Robert E.

Taylor, Jennie L.

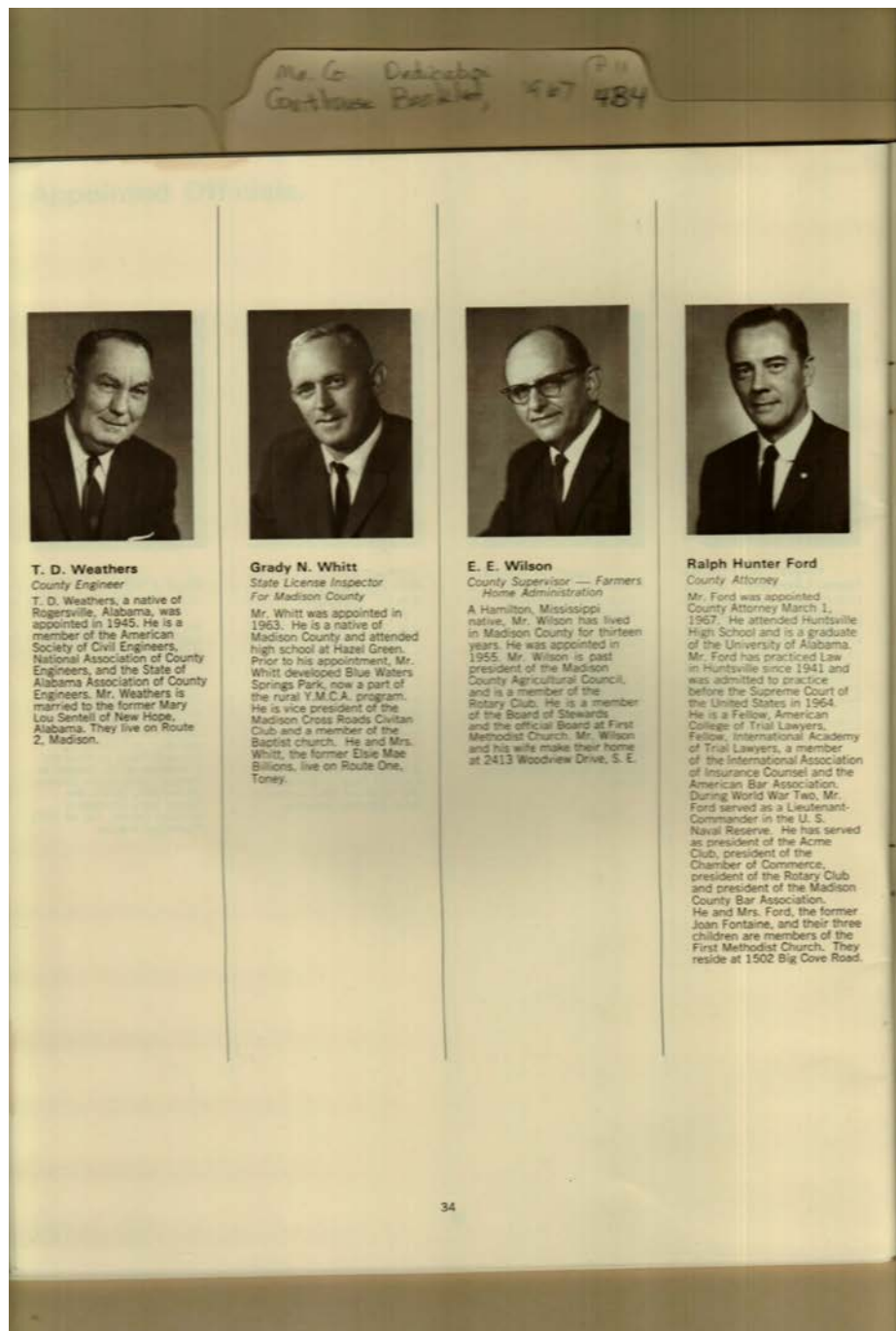
Uptain, Virgil J.

Places:

Madison County, AL

Types:

photo



Names:

Ford, Ralph Hunter

Weathers, T. D.

Whitt, Grady N.

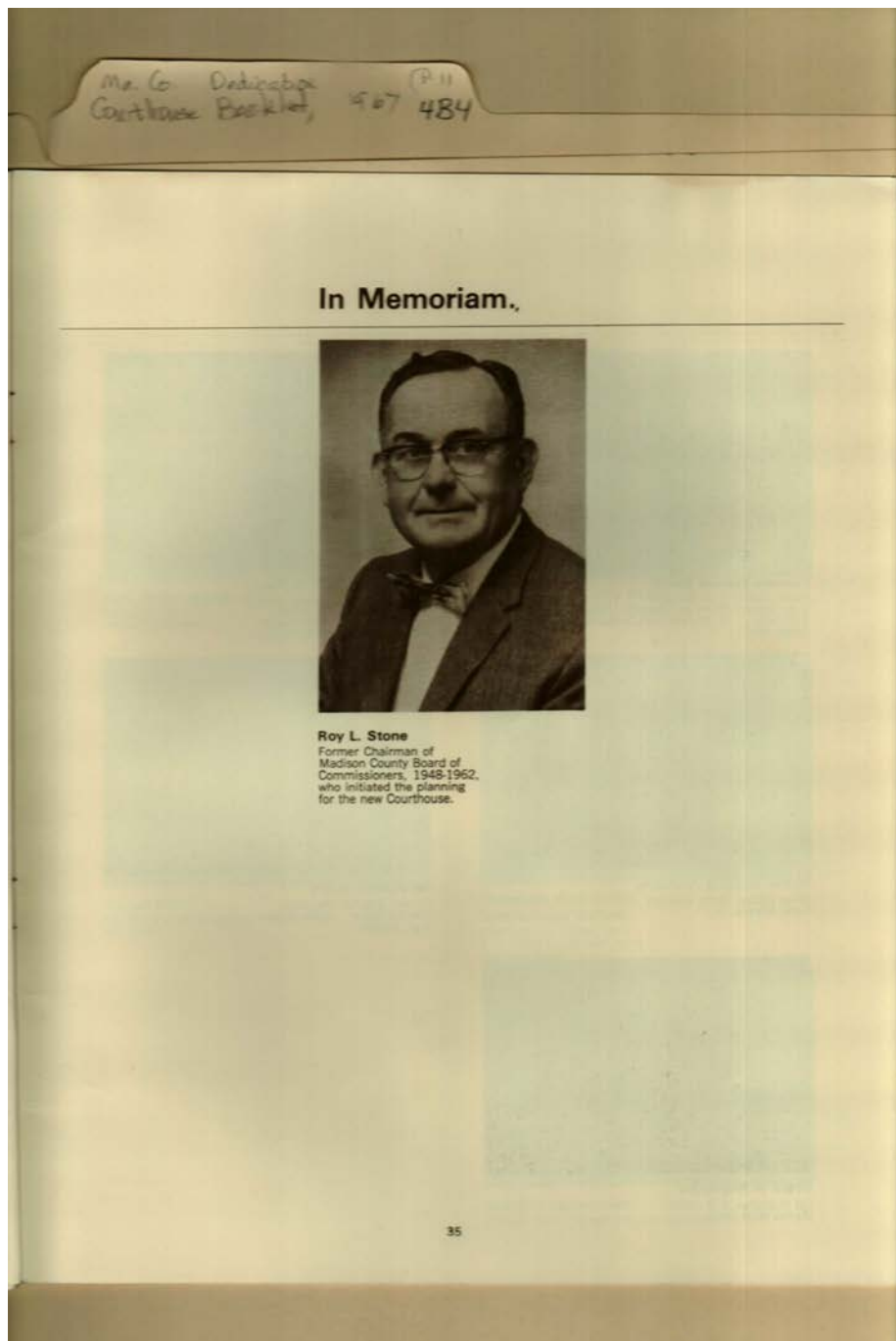
Wilson, E. E.

Places:

Madison County, AL

Types:

photo



In Memoriam.



Roy L. Stone
Former Chairman of
Madison County Board of
Commissioners, 1948-1962,
who initiated the planning
for the new Courthouse.

Names:

Stone, Roy L.

Places:

Madison County, AL

Types:

photo



Names:

Boles, Ernest	Coyle, E. L.	Rhodes, Jim	Treece, Howard
Butler, John G.	Hughes, Charles	Sanders, Herman	Vaughn, W. L.
Carriger, Atlas	McCowan, George	Smith, Joe	Worley, Joe
Cherches, Charles	Moore, Warren	Spencer, Donald	

Places:

Madison County, AL

Types:

photo

Ma. Co. Dedication
 Courthouse Booklet, 1967 P 11
 484

Floor Directory

BASEMENT	ROOM NO.	FOURTH FLOOR	ROOM NO.
Building Guard	B-35	Auditorium #1	410
Building Superintendent	B-30	Board of Registrars	411
Historical Research Room	B-5	Chairman, County Commissioners	400
Microfilming and Reproduction	B-8	Cigarette Tax Clerk	400
Public Restrooms	B-14, 16, 18, 20	Coliseum Board	400
Records Custodian	B-8	County Aid Coordinator	409
Storage Vaults	Various	County Attorney	400
		County Clerk-Auditor	400
		County Commissioners	400
		County Commissioners, Courtroom	403
		District Attorney	414
		Farmers Market Board	400
		Gasoline Tax Inspector	400
		Grand Jury and Bailiff	425
		Jury Commission	433
		Jury Venire	434
		Public Mens Toilet	432
		Purchasing Agent	400
		State Probation Officer (For Adults)	427
		Voting Machine Custodian	400
		Water Study Board	400
		FIFTH FLOOR	
		Council for International Visitors	525
		County Board of Education	517
		Forest Rangers	528
		Game Warden	528
		Public Womens Toilet and Lounge	545
		State Troopers, Drivers License Exams	535
		Surplus Commodity Program	528
		Tuberculosis Association for North Alabama	543
		Veterans Affairs	540
		SIXTH FLOOR	
		A. B. C. Board Agents	615
		Agricultural Stabilization Committee	619
		Auditorium #2	600
		Farm Extension Service	605
		Farmers Home Administration	639
		Public Mens Toilet	636
		Soil Conservation Service	627
		State Examiner of Public Accounts	635
		SEVENTH FLOOR	
		Pensions and Security Department	700-746
		Public Womens Toilet and Lounge	747
		EIGHTH FLOOR	
		All Reserved for Future Expansion	
		NINTH AND TENTH FLOORS	
		Jail	900-1046
		ELEVENTH FLOOR	
		Mechanical Equipment	1100-1103

Names:

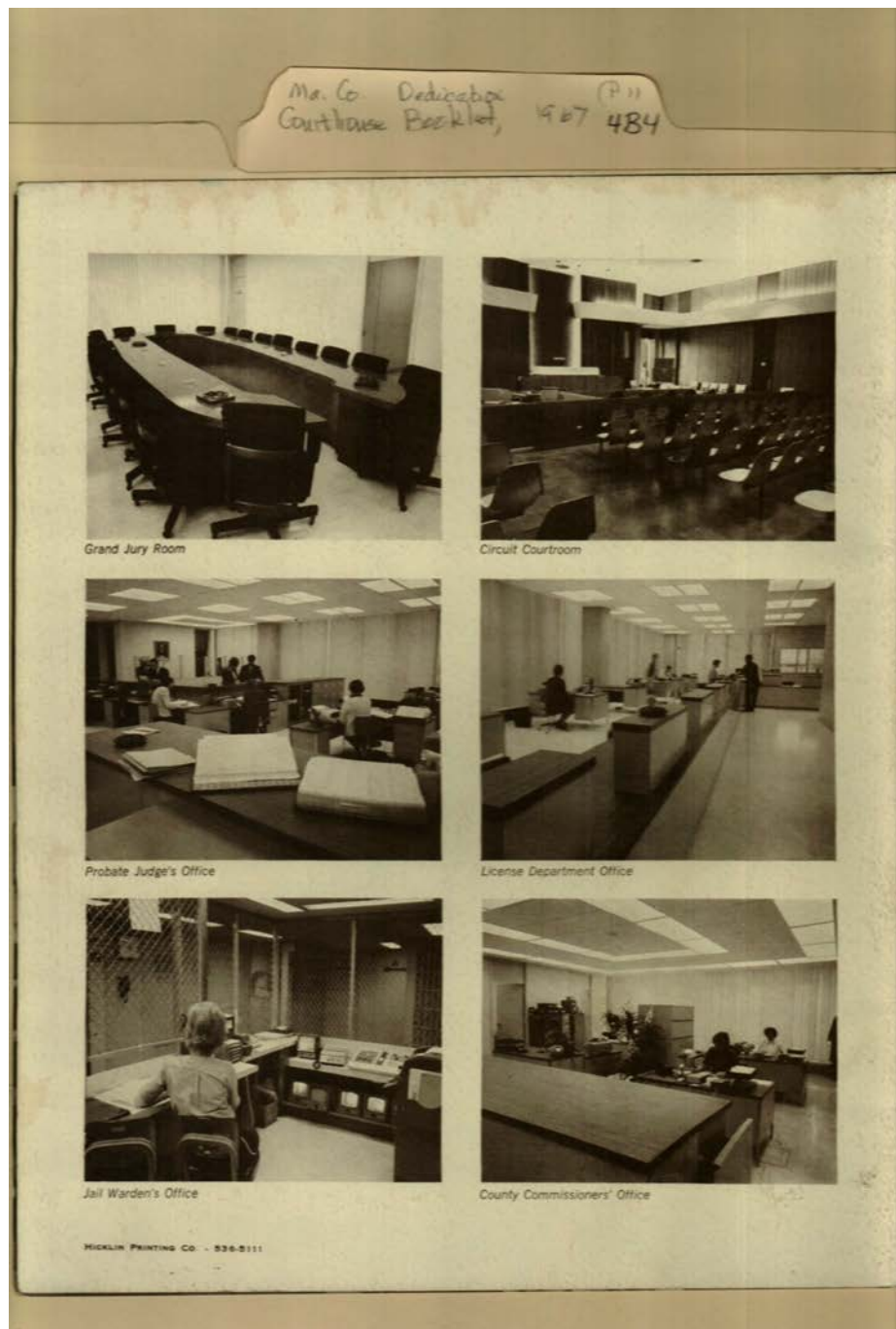
Floor Directory of
 Courthouse

Places:

Madison County, AL

Types:

photo



Names:

Circuit Courtroom
 County
 Commissioner's

Office
 Grand Jury Room
 Jail Warden's Office

License Department
 Office

Probate Judge's
 Office

Places:

Madison County, AL

Types:

photo

Frances Cabaniss Roberts Collection: Series 4, Subseries B, Box 4, Folder 11
Madison County Courthouse Dedication, 1967 - Madison County Buildings

[Contents](#) [Index](#) [About](#)

Table of Contents

[Image 1](#) (r04b04-11-000-0016)
[Image 2](#) (r04b04-11-000-0017)
[Image 3](#) (r04b04-11-000-0018)
[Image 4](#) (r04b04-11-000-0019)
[Image 5](#) (r04b04-11-000-0020)
[Image 6](#) (r04b04-11-000-0021)
[Image 7](#) (r04b04-11-000-0022)
[Image 8](#) (r04b04-11-000-0023)
[Image 9](#) (r04b04-11-000-0024)
[Image 10](#) (r04b04-11-000-0025)

[Image 11](#) (r04b04-11-000-0026)
[Image 12](#) (r04b04-11-000-0027)
[Image 13](#) (r04b04-11-000-0028)
[Image 14](#) (r04b04-11-000-0029)
[Image 15](#) (r04b04-11-000-0030)
[Image 16](#) (r04b04-11-000-0031)
[Image 17](#) (r04b04-11-000-0032)
[Image 18](#) (r04b04-11-000-0033)
[Image 19](#) (r04b04-11-000-0034)
[Image 20](#) (r04b04-11-000-0035)

[Image 21](#) (r04b04-11-000-0036)
[Image 22](#) (r04b04-11-000-0037)
[Image 23](#) (r04b04-11-000-0038)
[Image 24](#) (r04b04-11-000-0039)
[Image 25](#) (r04b04-11-000-0040)
[Image 26](#) (r04b04-11-000-0041)
[Image 27](#) (r04b04-11-000-0042)
[Image 28](#) (r04b04-11-000-0043)
[Image 29](#) (r04b04-11-000-0044)
[Image 30](#) (r04b04-11-000-0045)

[Image 31](#) (r04b04-11-000-0046)
[Image 32](#) (r04b04-11-000-0047)
[Image 33](#) (r04b04-11-000-0048)
[Image 34](#) (r04b04-11-000-0049)
[Table of Contents](#)
[Name & Place Index](#)
[About the Collection](#)

Frances Cabaniss Roberts Collection: Series 4, Subseries B, Box 4, Folder 11

Madison County Courthouse Dedication, 1967 - Madison County Buildings

[Contents](#) [Index](#) [About](#)

Name & Place Index

Anderson, William P. [6](#), [7](#)
Appointed Officials [26](#)
Archer, David R., Judge [23](#)
Art Metal Construction Co. [12](#)
Bama Wrecking Co. [14](#)
Bell, James [3](#), [22](#)
Betts, Charles [10](#)
Bibb, Colonel [7](#)
Bibb, Thomas [4](#), [17](#)
Bibb, William Wyatt [8](#), [17](#)
Boles, Ernest [32](#)
Brandon, Thomas [10](#), [17](#)
Brandon, William [10](#), [17](#)
Butler, John G. [32](#)
Butler, Samuel R. [18](#), [20](#)
Cabaniss, Fannie Shepherd [20](#)
Cabaniss, Fannie [18](#)
Carriger, Atlas [32](#)
Chapman, Reuben [17](#)
Chapman, Samuel [10](#), [17](#)
Chase, Henry C. [18](#), [20](#)
Cherches, Charles [32](#)
Cherokee Indians [18](#)
Chickasaw Indians [18](#)
Circuit Courtroom [34](#)
Clark, Dudley [3](#), [22](#)
Clay, Clement Claiborne [17](#)
Clay, Clement Comer [10](#), [17](#)
Clay, J. Withers [17](#)
Cobb, David [4](#)
Cobb, Lawrence [3](#), [23](#)
Coffee, John [6](#)
Coffee, [7](#)
Coulter, George [4](#)
Council, William H. [18](#), [20](#)
County Commissioner's Office [34](#)
Courthouse Mural [18](#), [19](#)
Courthouse [1](#), [5](#), [9](#)
Coyle, E. L. [32](#)
Crabtree, Charles Jerry, Sheriff [23](#)
Criner, Isaac [16](#), [18](#)
Criner, Joseph [16](#)
Culps, George T. Tax collector [23](#)
Darwin, James, Dr. [20](#)
Darwin, Martha Patton [20](#)
Darwin, Martha [18](#)
Davis, Samuel [16](#)
Daye, Sarah J. Clerk [24](#)
Dedication Program [1](#)
Dickson, William [4](#), [6](#)
Dilworth, George [4](#)
Dixon, E. F. [26](#)
Donegan, James I. [10](#)
Drake, J. F., Dr. [20](#)
Dunn, James [8](#)
Early History of Madison County [8](#)
Elected Officials [22](#)
Ewing, Stephen S. [10](#)
Fearn, Thomas, Dr. [10](#), [17](#)
Floor Directory of Courthouse [33](#)
Ford, Ralph Hunter [30](#)
Freeman, Thomas [4](#), [16](#)
Gibbs, James W. [26](#)
Gilbreath, Alexander [6](#)
Grand Jury Room [34](#)
Grayson, John [4](#), [16](#)
Green, John W. Judge [24](#)
Grote, Carl, Dr. [18](#), [20](#)
Gunn, Bob [26](#)
Gurley, Frank, Captain [18](#), [20](#)
Hamilton, John C. [4](#)
Harned, Perry M. [26](#)
Herring, C. E., Jr. [27](#)
Hickman, John H. [8](#)
Hinds, Levi [16](#)
Holmes, David, Governor [4](#), [7](#)
Hughes, Charles [32](#)
Hughey, J. Ausburn [27](#)
Hunt, John [4](#), [6](#), [16](#), [17](#), [18](#)
Huntsville Arsenal [13](#)
Jackson, James [6](#), [7](#)
Jail Warden's Office [34](#)
Jones, Edwin [3](#), [22](#)
Jones, Obadiah [4](#)
Jones, Thomas W., Judge [20](#)
Jones, Thomas, Judge [18](#)
Jones, Thomas [14](#)
Kirksley, John [4](#)
Kranert, Loyd [14](#)
Lanier, William [4](#)
License Department Office [34](#)
Little-Cleckler Construction Co. [12](#)
Madison County, AL [1](#), [2](#), [3](#), [4](#), [5](#), [6](#), [7](#), [8](#), [9](#), [10](#), [11](#), [12](#),
[13](#), [14](#), [15](#), [16](#), [17](#), [18](#), [19](#), [20](#), [21](#), [22](#), [23](#), [24](#), [25](#), [26](#),
[27](#), [28](#), [29](#), [30](#), [31](#), [32](#), [33](#), [34](#)
Magnusson, R. O. [27](#)
Manning, James [10](#)
Martin, John [4](#)
McBroom, Stephen [16](#)
McBroom, Thomas [16](#)
McCartney, John [16](#)
McCollum, Dovie [27](#)
McCowan, George [32](#)
McDonald, Thomas D., Judge [24](#)

McKee, James E. [28](#)
McVay, Hugh [4](#)
Mitchell, [10](#), [11](#)
Monroe, C. E., Jr. [18](#)
Monroe, Dan C. [18](#), [20](#)
Moore, David, Dr. [17](#)
Moore, David [8](#)
Moore, Gabriel [4](#), [17](#)
Moore, Marie Louise [28](#)
Moore, O. Howard tax assessor [24](#)
Moore, Warren [32](#)
Mural Historical Composition [16](#)
Mural in Foyer [2](#)
Neal, Stephen [4](#)
Notes on Mural [18](#)
Oatey, John W. [11](#)
Osborne, A. G., Jr. Coroner [25](#)
Parker, C. T. [11](#)
Parker, R. [11](#)
Parsons, Elbert H., Judge [25](#)
Patton, Charles, Dr. [17](#)
Pearce, Demoss and King [14](#)
Perkins, Abraham [4](#)
Perkins, Peter [4](#), [6](#)
Plat of Town [6](#)
Pope, Alexander [6](#)
Pope, LeRoy, Colonel [7](#)
Pope, LeRoy [4](#), [6](#), [8](#), [17](#), [18](#)
Probate Judge's Office [34](#)
Rayon, Thomas R. [11](#)
Record, James [3](#), [22](#)
Reed, Clarence W. [28](#)
Rhodes, Jim [32](#)
Rice, Leban [16](#)
Richardson, William, Judge [18](#), [20](#)
Roberts, Frances C. [15](#), [21](#)
Roberts, Frances, Dr. [18](#)
Rodgers, James Paul [28](#)
Rogers, James [4](#)

Royal, Ann [8](#)
Sanches, Ramon [18](#)
Sanders, Emmett [29](#)
Sanders, Herman [32](#)
Scruggs, Gross [10](#)
Smith, Joe [32](#)
Sparkman, John, Senator [18](#), [21](#)
Spencer, Donald [32](#)
Stamper, Robert E. [29](#)
Steele, George [10](#), [17](#)
Stone, Roy L. [31](#)
Tatum, Abner [8](#)
Taylor, Jennie L. [29](#)
Taylor, Thomas Jones, Judge [8](#), [16](#), [20](#)
Temporary Courthouse [15](#)
Thomas, David L. District Attny [25](#)
Thomas, Norman [18](#)
Todd, Ashford, Probate Judge [25](#)
Treece, Howard [32](#)
TVA [13](#)
Uptain, Virgil J. [29](#)
Vaughn, W. L. [32](#)
von Braun, Wernher, Dr. [18](#), [21](#)
Walker, James [16](#)
Walker, John Williams [4](#), [6](#), [17](#)
Walker, Samuel [10](#)
Walker, [7](#)
Ward, Edward [6](#), [7](#)
Watkins, William M. [8](#)
Weathers, T. D. [30](#)
Weeden, Howard [20](#)
Whitt, Grady N. [30](#)
Williams, Benjamin [4](#)
Williams, Marmaduke [4](#)
Williams, Robert, Governor [4](#)
Wilson, E. E. [30](#)
Wilson, [10](#), [11](#)
Winston, Louis [4](#), [6](#), [7](#)
Worley, Joe [32](#)

Frances Cabaniss Roberts Collection

Preferred Citation: Frances Cabaniss Roberts Collection, Archives and Special Collections, M. Louis Salmon Library, University of Alabama in Huntsville, Huntsville, AL.

Collection Scope and Content: The Collection of 114 Linear ft. includes a total of 156 Archival Boxes. The Frances Cabaniss Roberts collection covers the historical records of the Cabaniss Roberts family. This collection contains extensive correspondence records of the Cabaniss Roberts family circa 1830 to 1930.

Archives/Special Collections Access Restrictions: None

Conditions Governing Use: This material may be protected under U. S. Copyright Law (Title 17, U.S. Code) which governs the making of photocopies or reproductions of copyrighted materials. You may use the digitized material for private study, scholarship, or research. Though the University of Alabama in Huntsville Archives and Special Collections has physical ownership of the material in its collections, in some cases we may not own the copyright to the material. It is the patron's obligation to determine and satisfy copyright restrictions when publishing or otherwise distributing materials found in our collections.

Provenance: Gift of Johanna Shields on October 28, 2006.



**The UAH Archives and Special Collections
M. Louis Salmon Library**