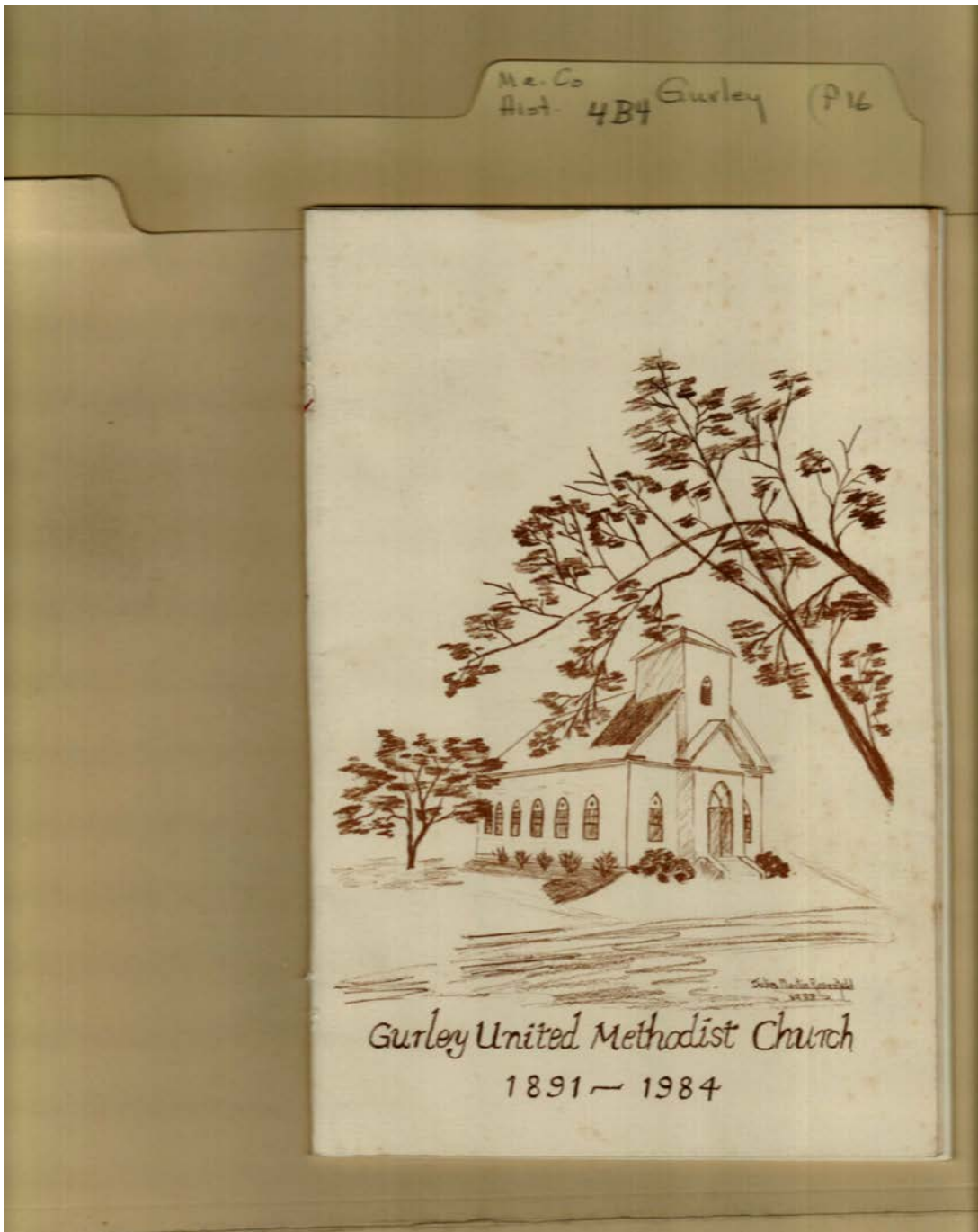


Frances Cabaniss Roberts Collection: Series 4, Subseries B, Box 4, Folder 16
Gurley United Methodist Church Brochure, 1986 - Madison County Communities
Image 1 r04b04-16-000-0001 [Contents](#) [Index](#) [About](#)



Names:

Church

Gurley United
Methodist Church

Places:

Gurley, AL

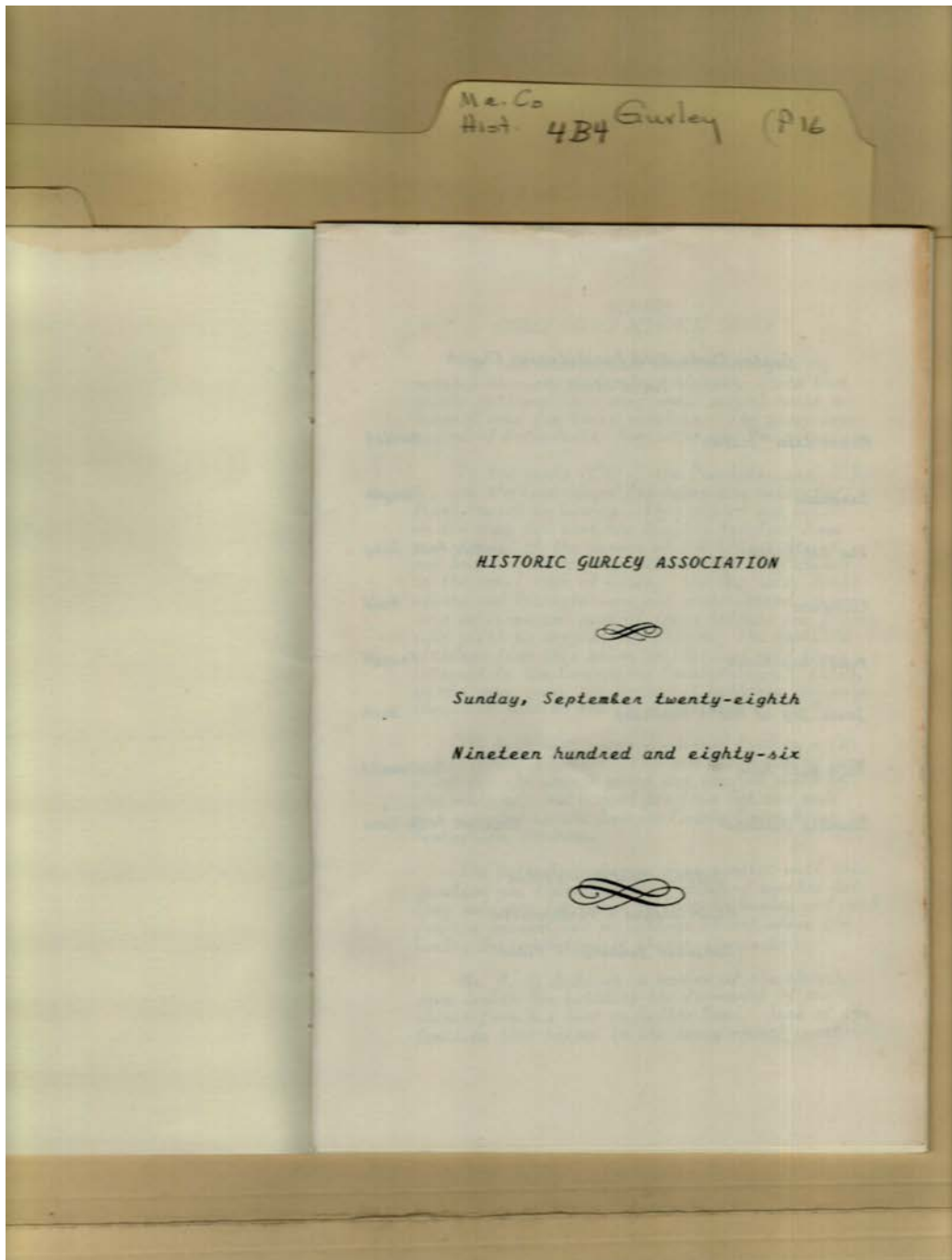
Types:

brochure

drawing

Dates:

1891-1984

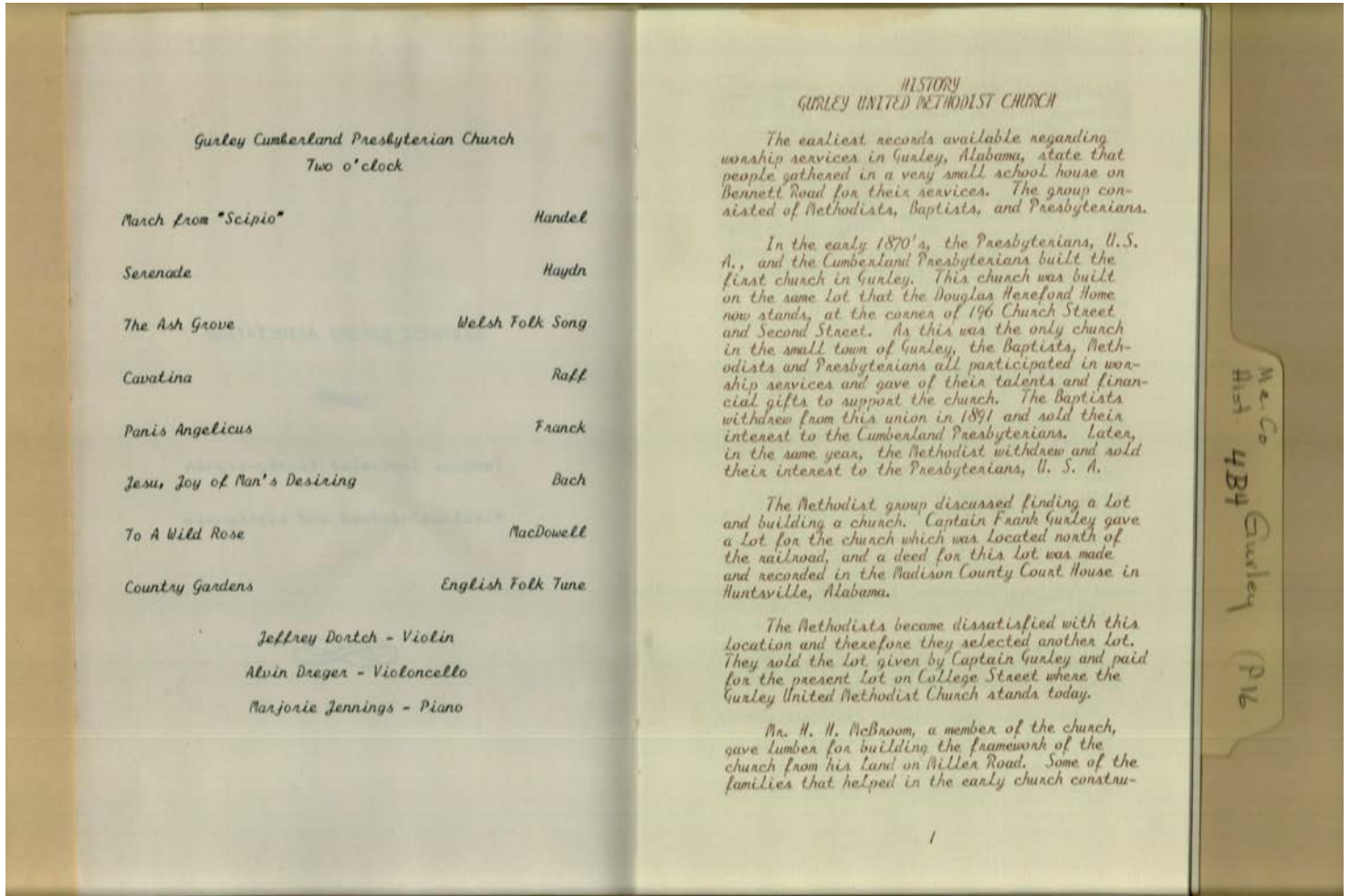


Names:
Historic Gurley
Association

Places:
Gurley, AL

Types:
brochure

Dates:
Sep 28, 1986



Names:

Dortch, Jeffery
 Dreger, Alvin

Gurley Cumberland
 Presbyterian
 Church

Gurley, Frank,
 Captain
 Hereford, Douglas

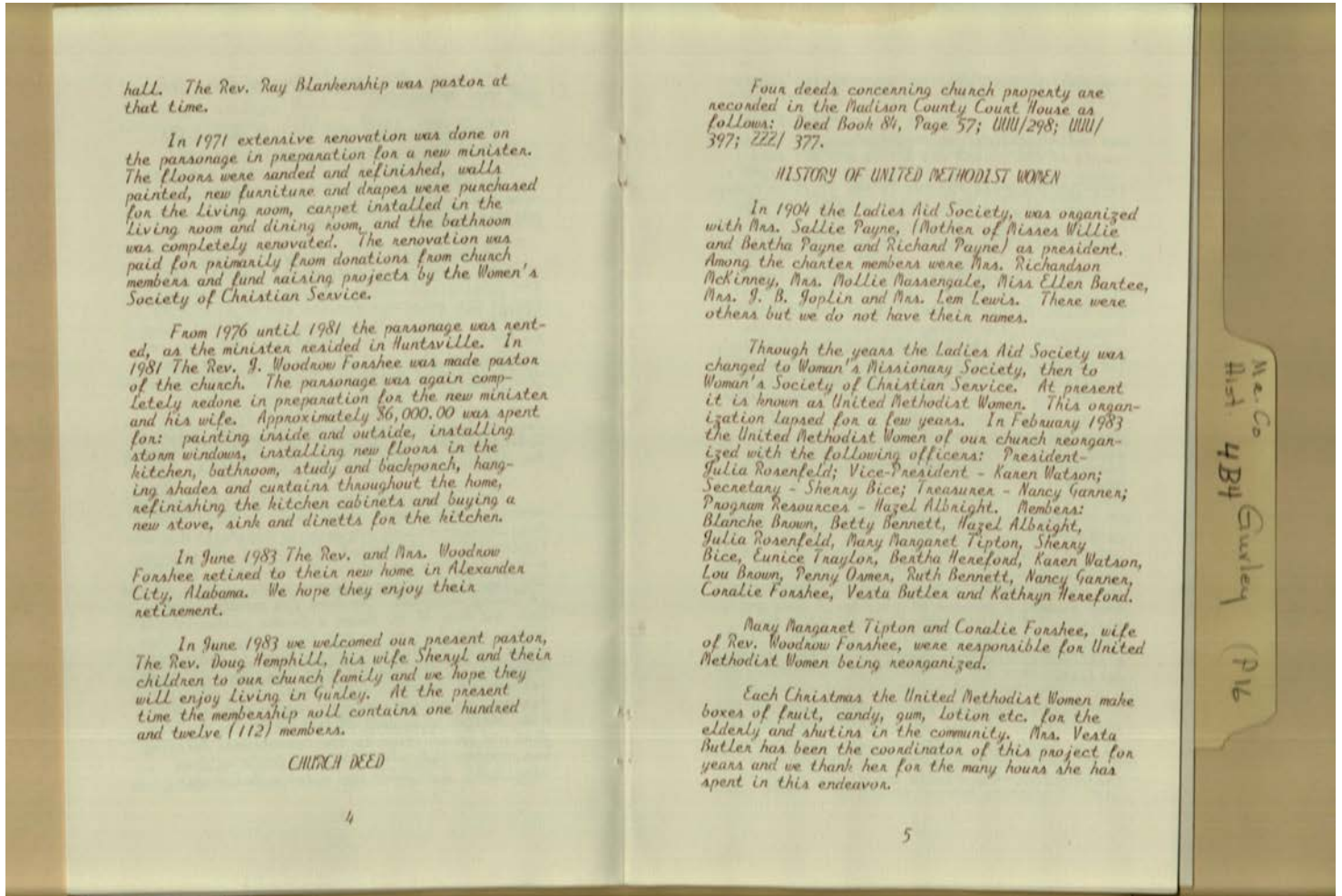
Jennings, Majorie
 McBroom, H. H.
 Program

Places:

Gurley, AL

Types:

brochure

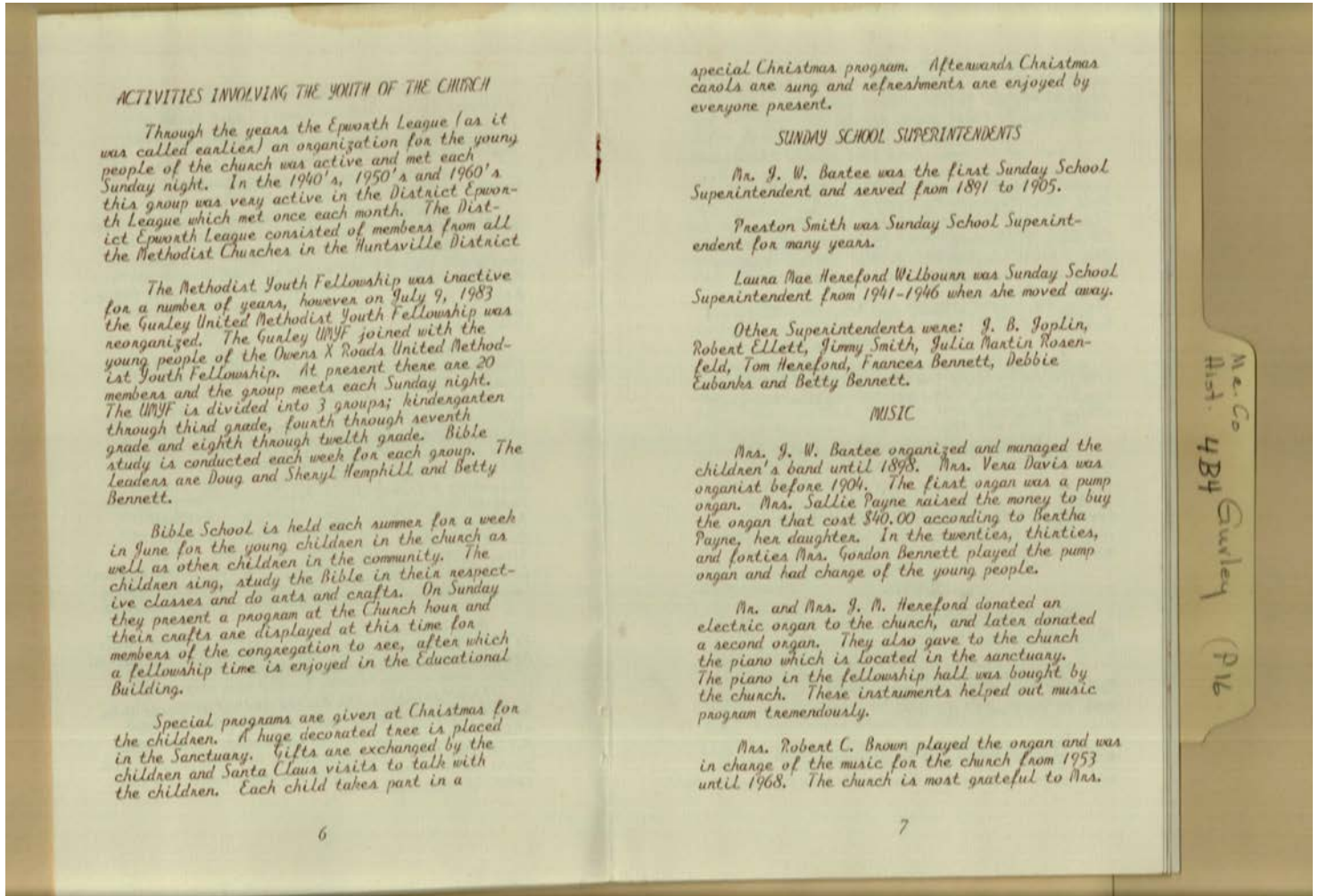


Names:

- | | | | |
|-------------------|----------------------|---------------------|---------------------|
| Albright, Hazel | Butler, Vesta | History of United | Payne, Richard |
| Bartee, Ellen | Forshee, Coralie | Methodist Women | Payne, Sallie, Mrs. |
| Bennett, Betty | Forshee, J. Woodrow, | Joplin, J. B., Mrs. | Payne, Willie, Miss |
| Bennett, Ruth | Rev. | Lewis, Lem, Mrs. | Rosenfeld, Julia |
| Bice, Sherry | Garner, Nancy | Massengale, Mollie | Tipton, Mary |
| Blankenship, Ray, | Hemphill, Doug, Rev. | McKinney, | Margaret |
| Rev. | Hemphill, Sheryl | Richardson, Mrs. | Traylor, Eunice |
| Brown, Blanche | Hereford, Bertha | Osmer, Penny | Watson, Karen |
| Brown, Lou | Hereford, Kathryn | Payne, Bertha, Miss | |

Types:

brochure

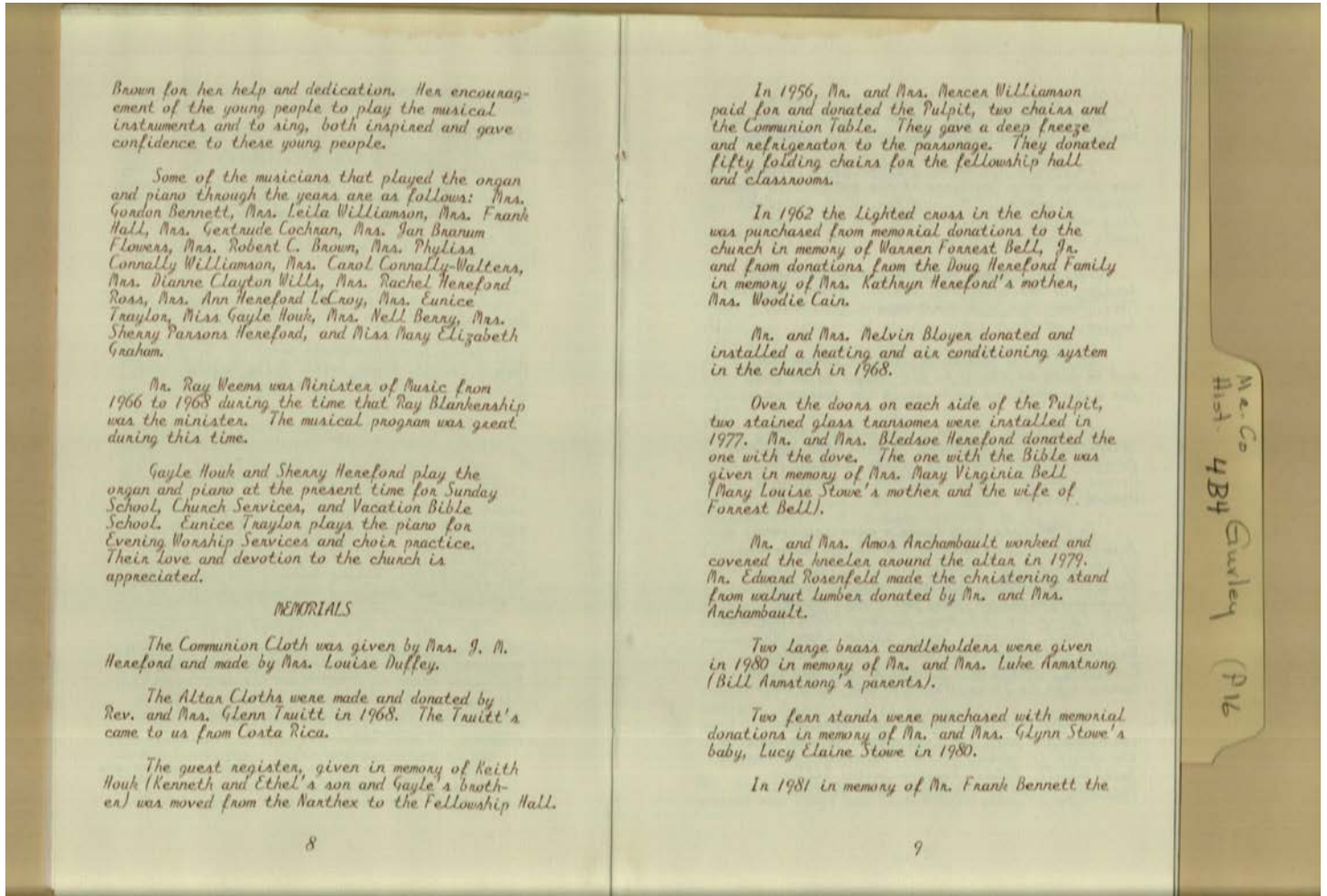


Names:

- | | | | |
|---------------------|-----------------------|---------------------|---------------------|
| Bartee, J. W. | Davis, Vera | Hereford, Tom | Sunday School |
| Bartee, J. W., Mrs. | Ellett, Robert | Joplin, J. B. | Superintendents |
| Bennett, Betty | Epworth League | Payne, Bertha, Miss | Wilbourn, Laura Mae |
| Bennett, Frances | Eubanks, Debbie | Payne, Sallie, Mrs. | Hereford |
| Bennett, Gordon, | Hemphill, Doug | Rosenfeld, Julia | Youth Activities |
| Mrs. | Hemphill, Sheryl | Martin | |
| Brown, Robert C., | Hereford, J. M. | Smith, Jimmy | |
| Mrs. | Hereford, J. M., Mrs. | Smith, Preston | |

Types:

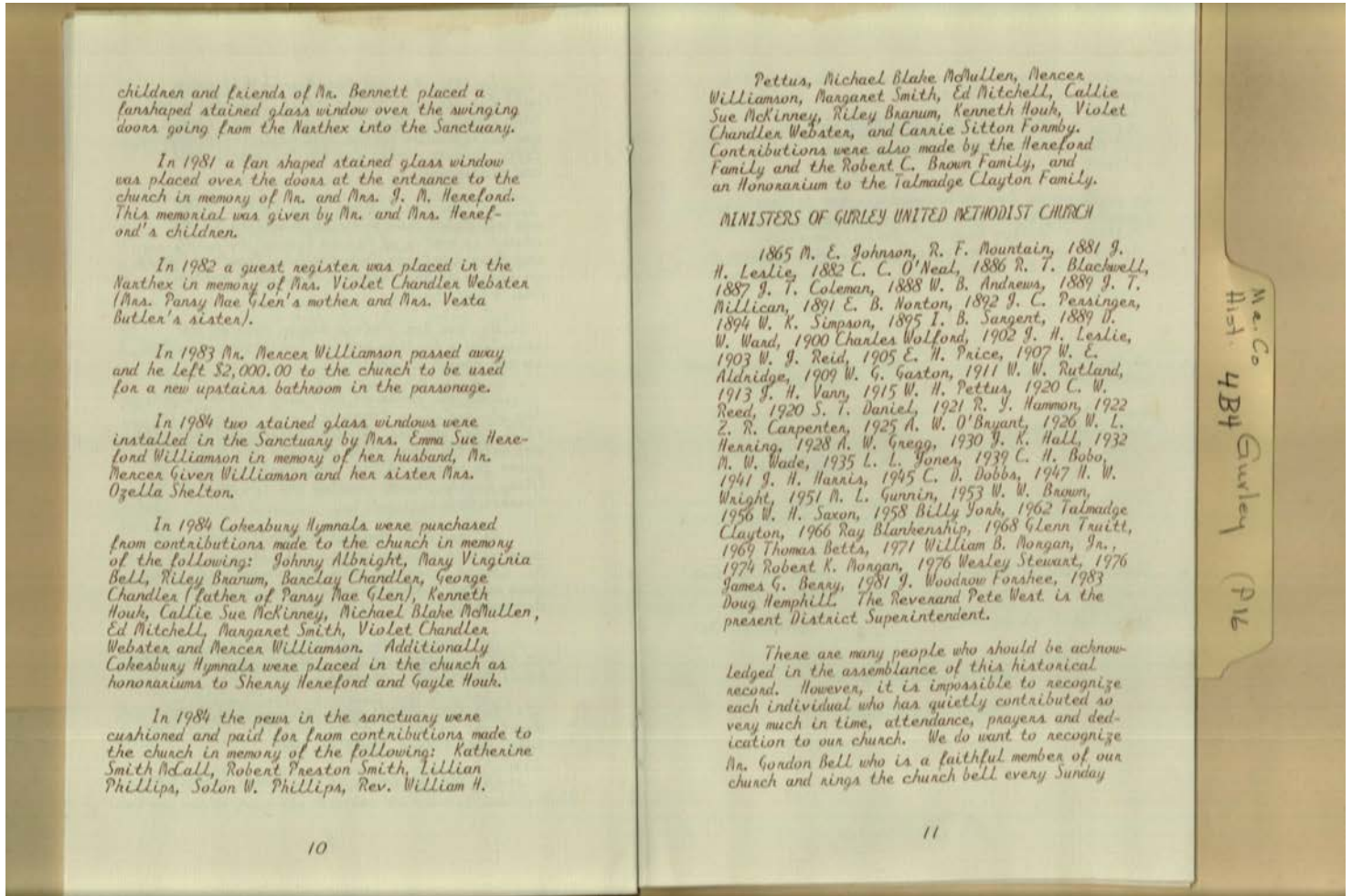
brochure



Names:

- | | | | |
|---------------------|-----------------------|---------------------|-----------------------|
| Albright, Johnny | Formby, Carrie Sitton | McMullen, Michael | Saxon, W. H. |
| Aldridge, W. E. | Forshee, J. Woodrow, | Blake | Shelton, Ozella, Mrs. |
| Andrews, W. B. | Rev. | Millican, J. T. | Simpson, W. K. |
| Bell, Gordon | Gaston, W. G. | Ministers of Gurley | Smith, Margaret |
| Bell, Mary Virginia | Glen, Pansy Mae | Methodist Church | Smith, Robert Preston |
| Bennett, | Gregg, A. W. | Mitchell, Ed | Stewart, Wesley |
| Berry, James G. | Gunnin, M. L. | Morgan, Robert K. | Truitt, Glenn |
| Betts, Thomas | Hall, J. K. | Morgan, William B., | Vann, J. H. |
| Blackwell, R. T. | Hammon, R. Y. | Jr. | Wade, M. W. |
| Blankenship, Ray, | Harris, J. H. | Mountain, R. F. | Ward, D. W. |
| Rev. | Hemphill, Doug, Rev. | Norton, E. B. | Webster, Violet |
| Bobo, C. H. | Henning, W. L. | O'Bryant, A. W. | Chandler, Mrs. |
| Branum, Riley | Hereford, J. M. | O'Neal, C. C. | West, Pete |
| Brown, Robert C. | Hereford, J. M., Mrs. | Pensinger, J. C. | Williamson, Emma |
| Brown, W. W. | Hereford, Sherry | Pettus, William H., | Sue Hereford |
| Butler, Vesta, Mrs. | Houk, Gayle | Rev. | Williamson, Mercer |
| Carpenter, Z. R. | Houk, Kenneth | Phillips, Lillian | Williamson, Mercer |
| Chandler, Barclay | Johnson, M. E. | Phillips, Solon W. | Given |
| Chandler, George | Jones, L. L. | Price, E. H. | Wolford, Charles |
| Clayton, Talmadge | Leslie, J. H. | Reed, C. W. | Wright, H. W. |
| Coleman, J. T. | McCall, Katherine | Reid, W. J. | York, Billy |
| Daniel, S. T. | Smith | Rutland, W. W. | |
| Dobbs, C. D. | McKinney, Callie Sue | Sargent, I. B. | |

Types:
brochure



Names:

Ministers of Gurley
 United Methodist
 Church
 Aldridge, W. E.
 Andrews, W. B.
 Bell, Gordon
 Berry, James G.
 Betts, Thomas
 Blackwell, R. T.
 Blankenship, Ray
 Brown, W. W.
 Carpenter, Z. R.
 Clayton, Talmadge

Coleman, J. T.
 Daniel, S. T.
 Dobbs, C. D.
 Forshee, J. Woodrow
 Gaston, W. G.
 Gregg, A. W.
 Gunnin, M. L.
 Hall, J. K.
 Hammon, R. Y.
 Harris, J. H.
 Hemphill, Doug
 Herring, W. L.
 Johnson, M. E.

Leslie, J. H.
 Millican, J. T.
 Morgan, Robert K.
 Morgan, William B.,
 Jr.
 Mountain, R. F.
 Norton, E. B.
 O♦Bryant, A. W.
 O♦Neal, C. C.
 Persinger, J. C.
 Pettus, W. H.
 Price, E. H.
 Reed, C. W.

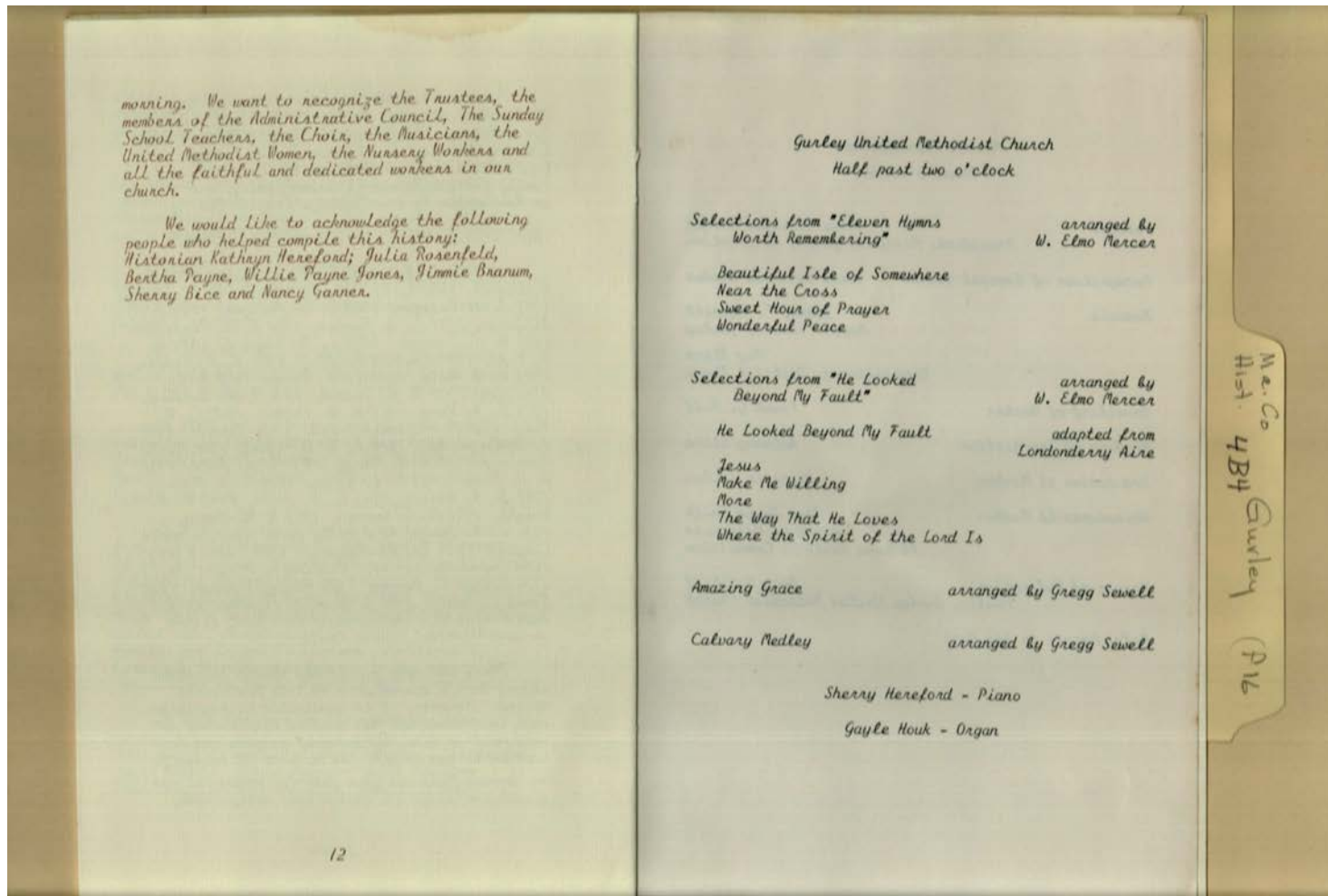
Reid, W. J.
 Rutland, W. W.
 Sargent, I. B.
 Saxon, W. H.
 Simpson, W. K.
 Stewart, Wesley
 Truitt, Glenn
 Vann, J. H.
 Ward, D. W.
 West, Pete
 Wolford, Charles
 Wright, H. W.
 York, Billy

Places:

Gurley, AL

Types:

brochure



Names:

Bice, Sherry
Branum, Jimmie

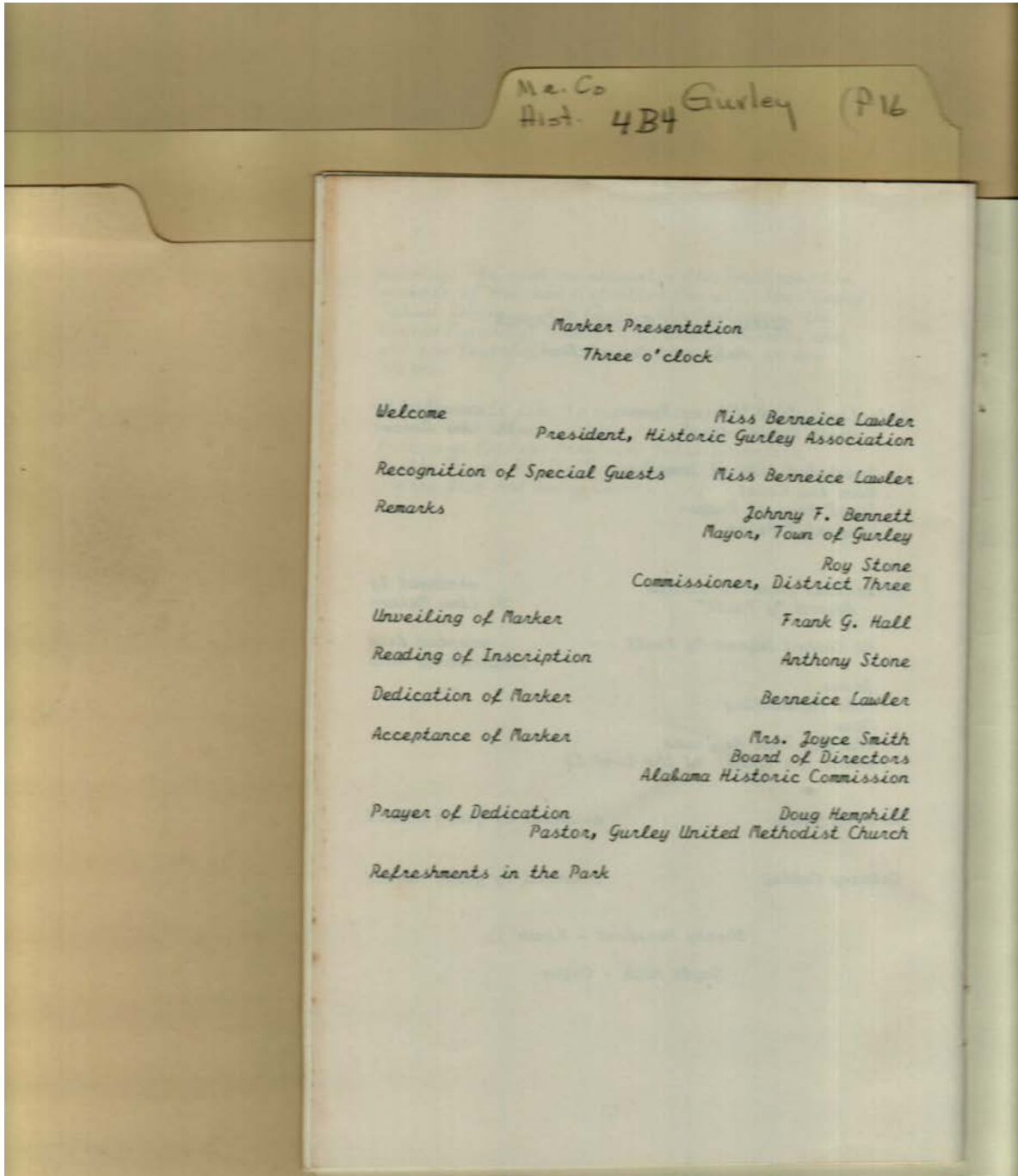
Garner, Nancy
Hereford, Kathryn

Jones, Willie Payne
Payne, Bertha, Miss

Rosenfeld, Julia

Types:

brochure



Names:

Bennett, Johnny F.
Hall, Frank G.

Hemphill, Doug
Lawler, Berneice

Marker Presentation
Smith, Joyce

Stone, Anthony
Stone, Roy

Types:

brochure



Types:
drawing

Dates:
1936

Ma. Co
Hist. 4B4 Gurley (P16)

Cascade Locks
11-13-63

Lt. Paul Hill
Portland Air Force Base
Portland, Ore.

Hi Lt. Paul -

No doubt you are surprised to hear from me, but when I arrived home last night after the "Lions" meeting and told Mrs Gurley about meeting you and about our conversation things happened. We got out our copy of the Genealogy of the Gurley Family and started looking.

It seems that my branch came to America from Scotland in 1680 and yours about 70-80 years later.

My line of Gurleys settled in Mass., then to Conn and then to Ohio in 1810 and some came to Oregon in 1865.

This Book traces the early Gurleys back to the 1000's in Scotch history

These early Gurley lines came from Scotland and no doubt were related in some way

(OVER) curphon Cascade Locks
8555

Names:

Gurley,

Hill, Paul, Lt.

Places:

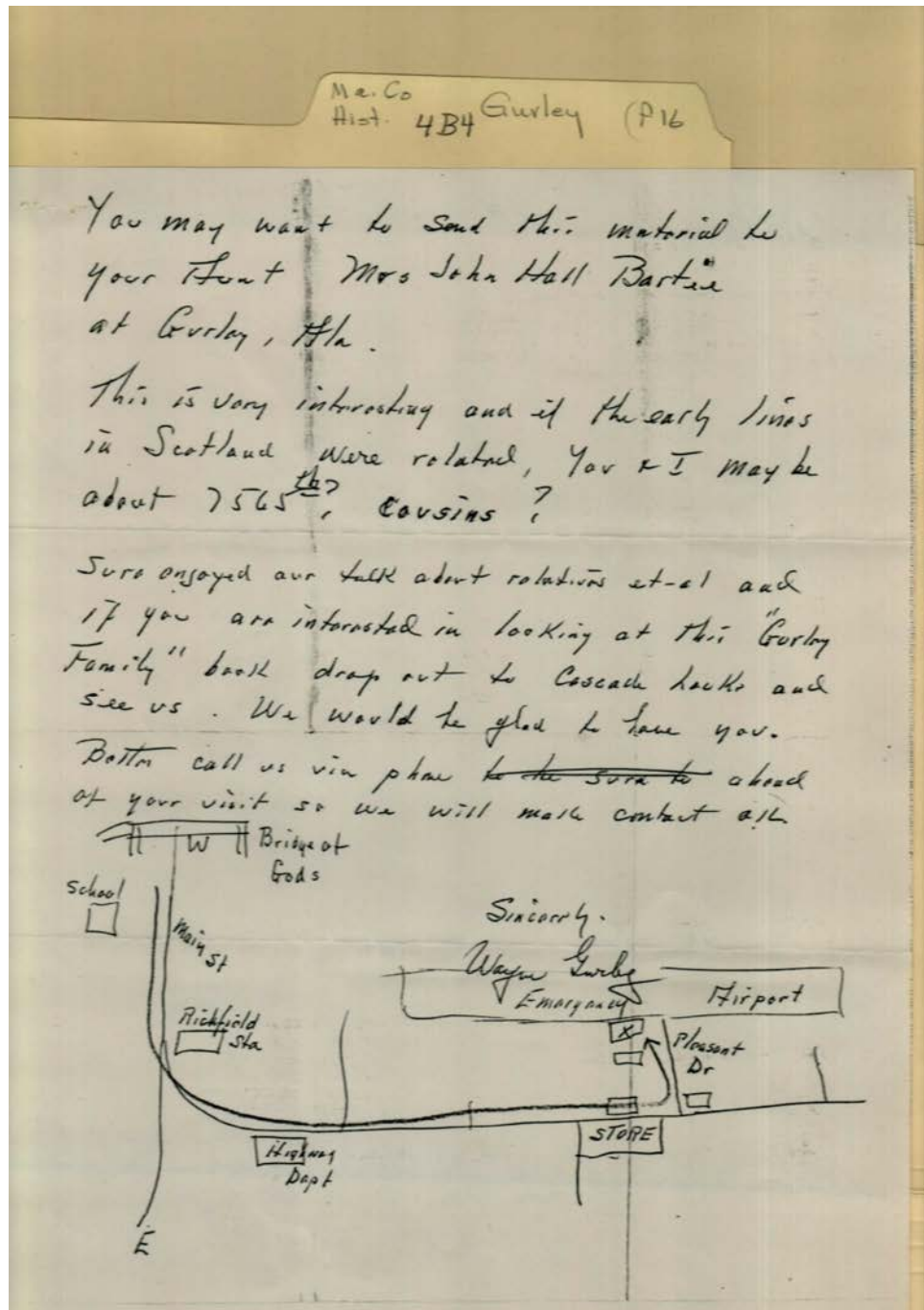
Portland, OR

Types:

correspondence

Dates:

Nov 13, 1963



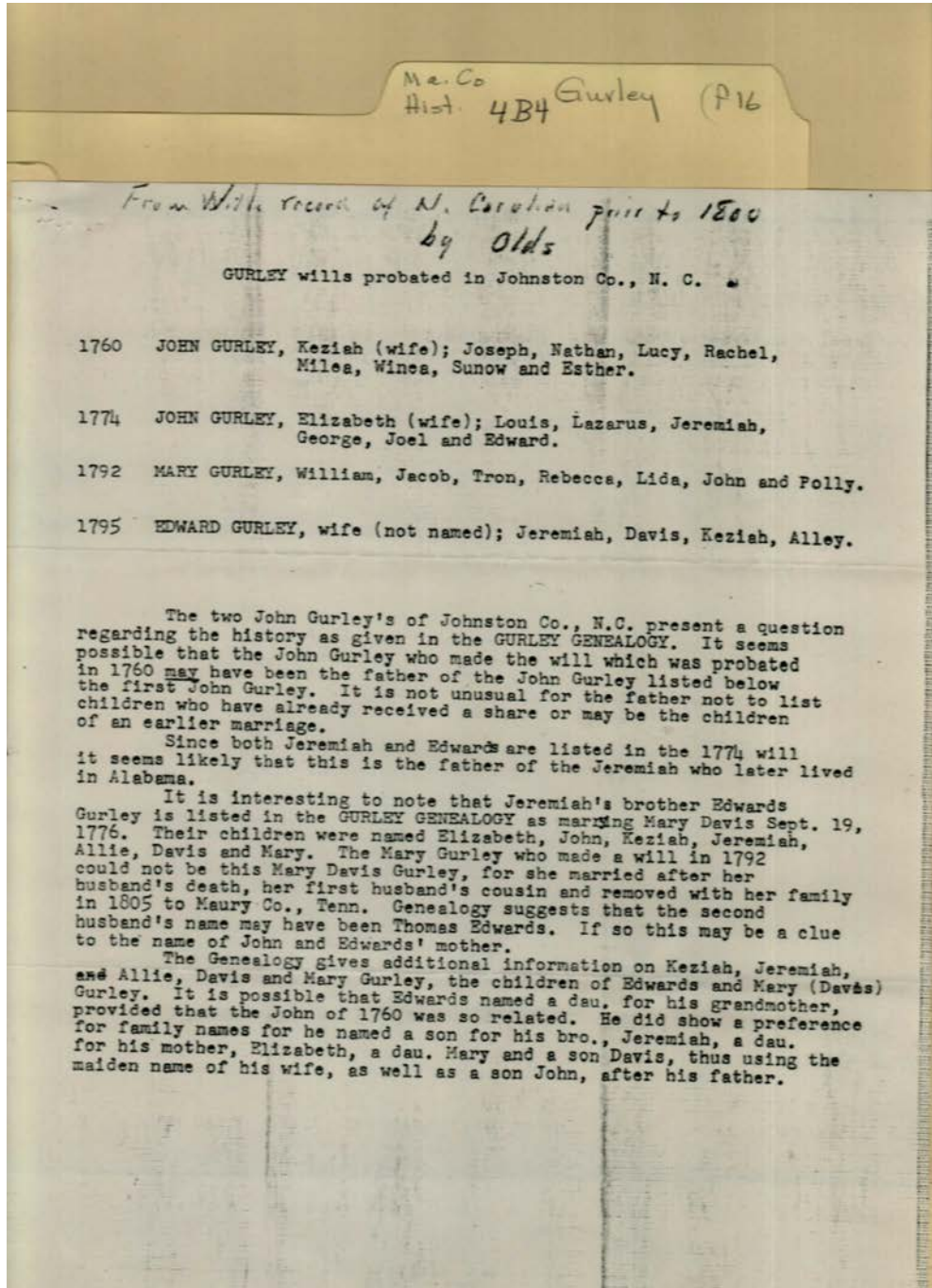
Names:

Gurley, Wayne

Hall, John (Bartie)

Types:

correspondence

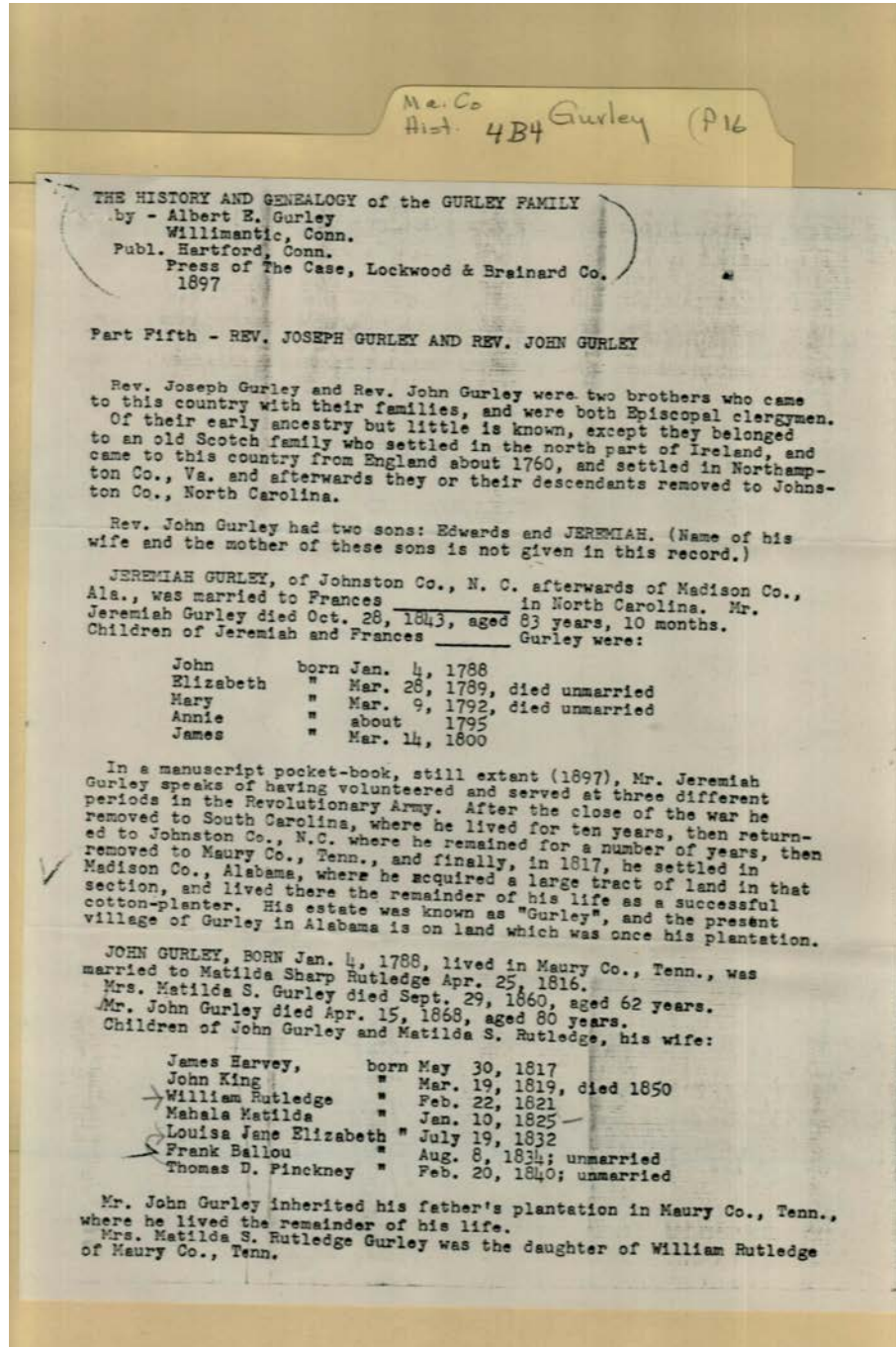


Names:

Edwards, Thomas	Gurley, Elizabeth	Gurley, Keziah	Gurley, Nathan
Gurley Genealogy	Gurley, Esther	Gurley, Lazarus	Gurley, Polly
Gurley Wills in	Gurley, George	Gurley, Lida	Gurley, Rachel
Johnston County,	Gurley, Jacob	Gurley, Louis	Gurley, Rebecca
NC	Gurley, Jeremiah	Gurley, Lucy	Gurley, Sunow
Gurley, Alley	Gurley, Joel	Gurley, Mary	Gurley, Tron
Gurley, Davis	Gurley, John	Gurley, Mary Davis	Gurley, William
Gurley, Edward	Gurley, Joseph	Gurley, Milea	Gurley, Winea

Types:

essay



Names:

, Frances
 Gurley, Albert E.
 Gurley, Annie
 Gurley, Edwards
 Gurley, Elizabeth
 Gurley, Frank Ballou
 Gurley, James

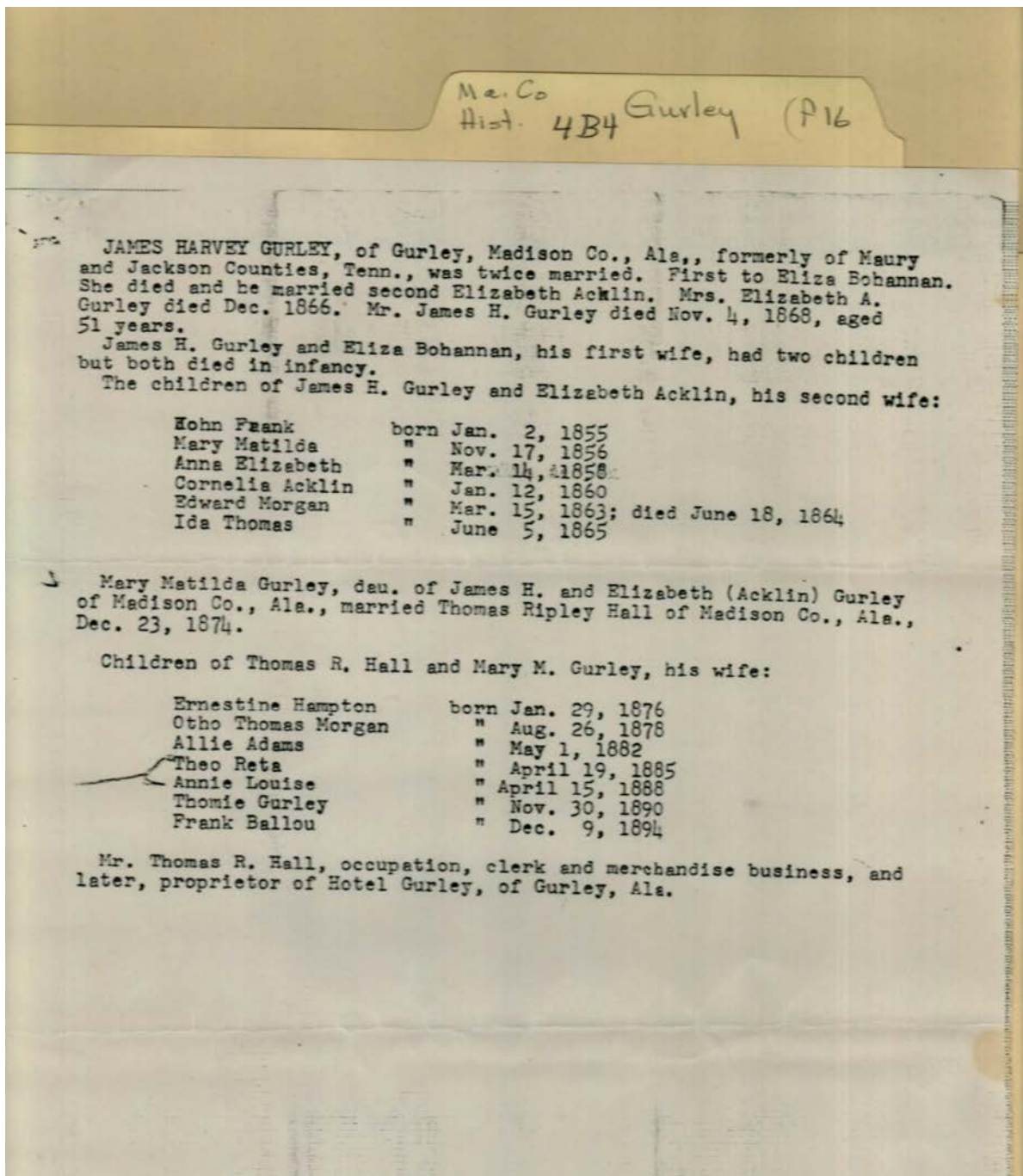
Gurley, James Harvey
 Gurley, Jeremiah
 Gurley, John King
 Gurley, John, Rev.
 Gurley, Joseph, Rev.
 Gurley, Louisa Jane
 Elizabeth

Gurley, Mahala
 Matilda
 Gurley, Mary
 Gurley, William
 Rutledge
 History and
 Genealogy of

Gurley Family
 Pinckney, Thomas D.
 Rutledge, Matilda S.
 Rutledge, William

Types:

essay



Names:

Acklin, Elizabeth
Bohannan, Eliza
Gurley, Anna
Elizabeth
Gurley, Cornelia
Acklin

Gurley, Edward
Morgan
Gurley, Elizabeth A.
Gurley, Ida Thomas
Gurley, James Harvey
Gurley, John Frank

Gurley, Mary Matilda
Hall, Annie Louise
Hall, Ernestine
Hampton
Hall, Frank Ballou

Hall, Otho Thomas
Morgan
Hall, Theo Reta
Hall, Thomas Ripley
Hall, Thomie Gurley

Types:

essay

**Frances Cabaniss Roberts Collection: Series 4, Subseries B, Box 4, Folder 16
Gurley United Methodist Church Brochure, 1986 - Madison County Communities**

[Contents](#) [Index](#) [About](#)

Table of Contents

[Image 1](#) (r04b04-16-000-0001)

[Image 2](#) (r04b04-16-000-0002)

[Image 3](#) (r04b04-16-000-0003)

[Image 4](#) (r04b04-16-000-0004)

[Image 5](#) (r04b04-16-000-0005)

[Image 6](#) (r04b04-16-000-0006)

[Image 7](#) (r04b04-16-000-0006a)

[Image 8](#) (r04b04-16-000-0007)

[Image 9](#) (r04b04-16-000-0008)

[Image 10](#) (r04b04-16-000-0009)

[Image 11](#) (r04b04-16-000-0010)

[Image 12](#) (r04b04-16-000-0011)

[Image 13](#) (r04b04-16-000-0012)

[Image 14](#) (r04b04-16-000-0013)

[Image 15](#) (r04b04-16-000-0014)

[Table of Contents
Name & Place Index
About the Collection](#)

**Frances Cabaniss Roberts Collection: Series 4, Subseries B, Box 4, Folder 16
Gurley United Methodist Church Brochure, 1986 - Madison County Communities**

[Contents](#) [Index](#) [About](#)

Name & Place Index

, Frances [14](#)
Acklin, Elizabeth [15](#)
Albright, Hazel [4](#)
Albright, Johnny [6](#)
Aldridge, W. E. [6, 7](#)
Andrews, W. B. [6, 7](#)
Bartee, Ellen [4](#)
Bartee, J. W., Mrs. [5](#)
Bartee, J. W. [5](#)
Bell, Gordon [6, 7](#)
Bell, Mary Virginia [6](#)
Bennett, Betty [4, 5](#)
Bennett, Frances [5](#)
Bennett, Gordon, Mrs. [5](#)
Bennett, Johnny F. [9](#)
Bennett, Ruth [4](#)
Bennett, [6](#)
Berry, James G. [6, 7](#)
Betts, Thomas [6, 7](#)
Bice, Sherry [4, 8](#)
Blackwell, R. T. [6, 7](#)
Blankenship, Ray, Rev. [4, 6](#)
Blankenship, Ray [7](#)
Bobo, C. H. [6](#)
Bohannon, Eliza [15](#)
Branum, Jimmie [8](#)
Branum, Riley [6](#)
Brown, Blanche [4](#)
Brown, Lou [4](#)
Brown, Robert C., Mrs. [5](#)
Brown, Robert C. [6](#)
Brown, W. W. [6, 7](#)
Butler, Vesta, Mrs. [6](#)
Butler, Vesta [4](#)
Carpenter, Z. R. [6, 7](#)
Chandler, Barclay [6](#)
Chandler, George [6](#)
Church [1](#)
Clayton, Talmadge [6, 7](#)
Coleman, J. T. [6, 7](#)
Daniel, S. T. [6, 7](#)
Davis, Vera [5](#)
Dobbs, C. D. [6, 7](#)
Dortch, Jeffery [3](#)
Dreger, Alvin [3](#)
Edwards, Thomas [13](#)
Ellett, Robert [5](#)
Epworth League [5](#)
Eubanks, Debbie [5](#)
Formby, Carrie Sitton [6](#)
Forshee, Coralie [4](#)
Forshee, J. Woodrow, Rev. [4, 6](#)
Forshee, J. Woodrow [7](#)
Garner, Nancy [4, 8](#)
Gaston, W. G. [6, 7](#)
Glen, Pansy Mae [6](#)
Gregg, A. W. [6, 7](#)
Gunnin, M. L. [6, 7](#)
Gurley Cumberland Presbyterian Church [3](#)
Gurley Genealogy [13](#)
Gurley United Methodist Church [1](#)
Gurley Wills in Johnston County, NC [13](#)
Gurley, Albert E. [14](#)
Gurley, Alley [13](#)
Gurley, AL [1, 2, 3, 7](#)
Gurley, Anna Elizabeth [15](#)
Gurley, Annie [14](#)
Gurley, Cornelia Acklin [15](#)
Gurley, Davis [13](#)
Gurley, Edward Morgan [15](#)
Gurley, Edwards [14](#)
Gurley, Edward [13](#)
Gurley, Elizabeth A. [15](#)
Gurley, Elizabeth [13, 14](#)
Gurley, Esther [13](#)
Gurley, Frank Ballou [14](#)
Gurley, Frank, Captain [3](#)
Gurley, George [13](#)
Gurley, Ida Thomas [15](#)
Gurley, Jacob [13](#)
Gurley, James Harvey [14, 15](#)
Gurley, James [14](#)
Gurley, Jeremiah [13, 14](#)
Gurley, Joel [13](#)
Gurley, John Frank [15](#)
Gurley, John King [14](#)
Gurley, John, Rev. [14](#)
Gurley, John [13](#)
Gurley, Joseph, Rev. [14](#)
Gurley, Joseph [13](#)
Gurley, Keziah [13](#)
Gurley, Lazarus [13](#)
Gurley, Lida [13](#)
Gurley, Louisa Jane Elizabeth [14](#)
Gurley, Louis [13](#)
Gurley, Lucy [13](#)
Gurley, Mahala Matilda [14](#)
Gurley, Mary Davis [13](#)
Gurley, Mary Matilda [15](#)
Gurley, Mary [13, 14](#)
Gurley, Milea [13](#)
Gurley, Nathan [13](#)
Gurley, Polly [13](#)
Gurley, Rachel [13](#)

Gurley, Rebecca [13](#)
Gurley, Sunow [13](#)
Gurley, Tron [13](#)
Gurley, Wayne [12](#)
Gurley, William Rutledge [14](#)
Gurley, William [13](#)
Gurley, Winea [13](#)
Gurley, [11](#)
Hall, Annie Louise [15](#)
Hall, Ernestine Hampton [15](#)
Hall, Frank Ballou [15](#)
Hall, Frank G. [9](#)
Hall, J. K. [6, 7](#)
Hall, John (Bartie) [12](#)
Hall, Otho Thomas Morgan [15](#)
Hall, Theo Reta [15](#)
Hall, Thomas Ripley [15](#)
Hall, Thomie Gurley [15](#)
Hammon, R. Y. [6, 7](#)
Harris, J. H. [6, 7](#)
Hemphill, Doug, Rev. [4, 6](#)
Hemphill, Doug [5, 7, 9](#)
Hemphill, Sheryl [4, 5](#)
Henning, W. L. [6](#)
Hereford, Bertha [4](#)
Hereford, Douglas [3](#)
Hereford, J. M., Mrs. [5, 6](#)
Hereford, J. M. [5, 6](#)
Hereford, Katheryn [4](#)
Hereford, Kathryn [8](#)
Hereford, Sherry [6](#)
Hereford, Tom [5](#)
Herring, W. L. [7](#)
Hill, Paul, Lt. [11](#)
Historic Gurley Association [2](#)
History and Genealogy of Gurley Family [14](#)
History of United Methodist Women [4](#)
Houk, Gayle [6](#)
Houk, Kenneth [6](#)
Jennings, Majorie [3](#)
Johnson, M. E. [6, 7](#)
Jones, L. L. [6](#)
Jones, Willie Payne [8](#)
Joplin, J. B., Mrs. [4](#)
Joplin, J. B. [5](#)
Lawler, Berneice [9](#)
Leslie, J. H. [6, 7](#)
Lewis, Lem, Mrs. [4](#)
Marker Presentation [9](#)
Massengale, Mollie [4](#)
McBroom, H. H. [3](#)
McCall, Katherine Smith [6](#)
McKinney, Callie Sue [6](#)
McKinney, Richardson, Mrs. [4](#)
McMullen, Michael Blake [6](#)
Millican, J. T. [6, 7](#)
Ministers of Gurley Methodist Church [6](#)
Ministers of Gurley United Methodist Church [7](#)
Mitchell, Ed [6](#)
Morgan, Robert K. [6, 7](#)
Morgan, William B., Jr. [6, 7](#)
Mountain, R. F. [6, 7](#)
Norton, E. B. [6, 7](#)
O'Bryant, A. W. [6](#)
O'Neal, C. C. [6](#)
Osmer, Penny [4](#)
O♦Bryant, A. W. [7](#)
O♦Neal, C. C. [7](#)
Payne, Bertha, Miss [4, 5, 8](#)
Payne, Richard [4](#)
Payne, Sallie, Mrs. [4, 5](#)
Payne, Willie, Miss [4](#)
Pensinger, J. C. [6](#)
Persinger, J. C. [7](#)
Pettus, W. H. [7](#)
Pettus, William H., Rev. [6](#)
Phillips, Lillian [6](#)
Phillips, Solon W. [6](#)
Pinckney, Thomas D. [14](#)
Portland, OR [11](#)
Price, E. H. [6, 7](#)
Program [3](#)
Reed, C. W. [6, 7](#)
Reid, W. J. [6, 7](#)
Rosenfeld, Julia Martin [5](#)
Rosenfeld, Julia [4, 8](#)
Rutland, W. W. [6, 7](#)
Rutledge, Matilda S. [14](#)
Rutledge, William [14](#)
Sargent, I. B. [6, 7](#)
Saxon, W. H. [6, 7](#)
Shelton, Ozella, Mrs. [6](#)
Simpson, W. K. [6, 7](#)
Smith, Jimmy [5](#)
Smith, Joyce [9](#)
Smith, Margaret [6](#)
Smith, Preston [5](#)
Smith, Robert Preston [6](#)
Stewart, Wesley [6, 7](#)
Stone, Anthony [9](#)
Stone, Roy [9](#)
Sunday School Superintendents [5](#)
Tipton, Mary Margaret [4](#)
Traylor, Eunice [4](#)
Truitt, Glenn [6, 7](#)
Vann, J. H. [6, 7](#)
Wade, M. W. [6](#)
Ward, D. W. [6, 7](#)
Watson, Karen [4](#)
Webster, Violet Chandler, Mrs. [6](#)
West, Pete [6, 7](#)
Wilbourn, Laura Mae Hereford [5](#)
Williamson, Emma Sue Hereford [6](#)
Williamson, Mercer Given [6](#)
Williamson, Mercer [6](#)
Wolford, Charles [6, 7](#)
Wright, H. W. [6, 7](#)

York, Billy [6](#), [7](#)
Youth Activities [5](#)

[7](#)

Frances Cabaniss Roberts Collection

Preferred Citation: Frances Cabaniss Roberts Collection, Archives and Special Collections, M. Louis Salmon Library, University of Alabama in Huntsville, Huntsville, AL.

Collection Scope and Content: The Collection of 114 Linear ft. includes a total of 156 Archival Boxes. The Frances Cabaniss Roberts collection covers the historical records of the Cabaniss Roberts family. This collection contains extensive correspondence records of the Cabaniss Roberts family circa 1830 to 1930.

Archives/Special Collections Access Restrictions: None

Conditions Governing Use: This material may be protected under U. S. Copyright Law (Title 17, U.S. Code) which governs the making of photocopies or reproductions of copyrighted materials. You may use the digitized material for private study, scholarship, or research. Though the University of Alabama in Huntsville Archives and Special Collections has physical ownership of the material in its collections, in some cases we may not own the copyright to the material. It is the patron's obligation to determine and satisfy copyright restrictions when publishing or otherwise distributing materials found in our collections.

Provenance: Gift of Johanna Shields on October 28, 2006.



THE UNIVERSITY OF
ALABAMA IN HUNTSVILLE

**The UAH Archives and Special Collections
M. Louis Salmon Library**