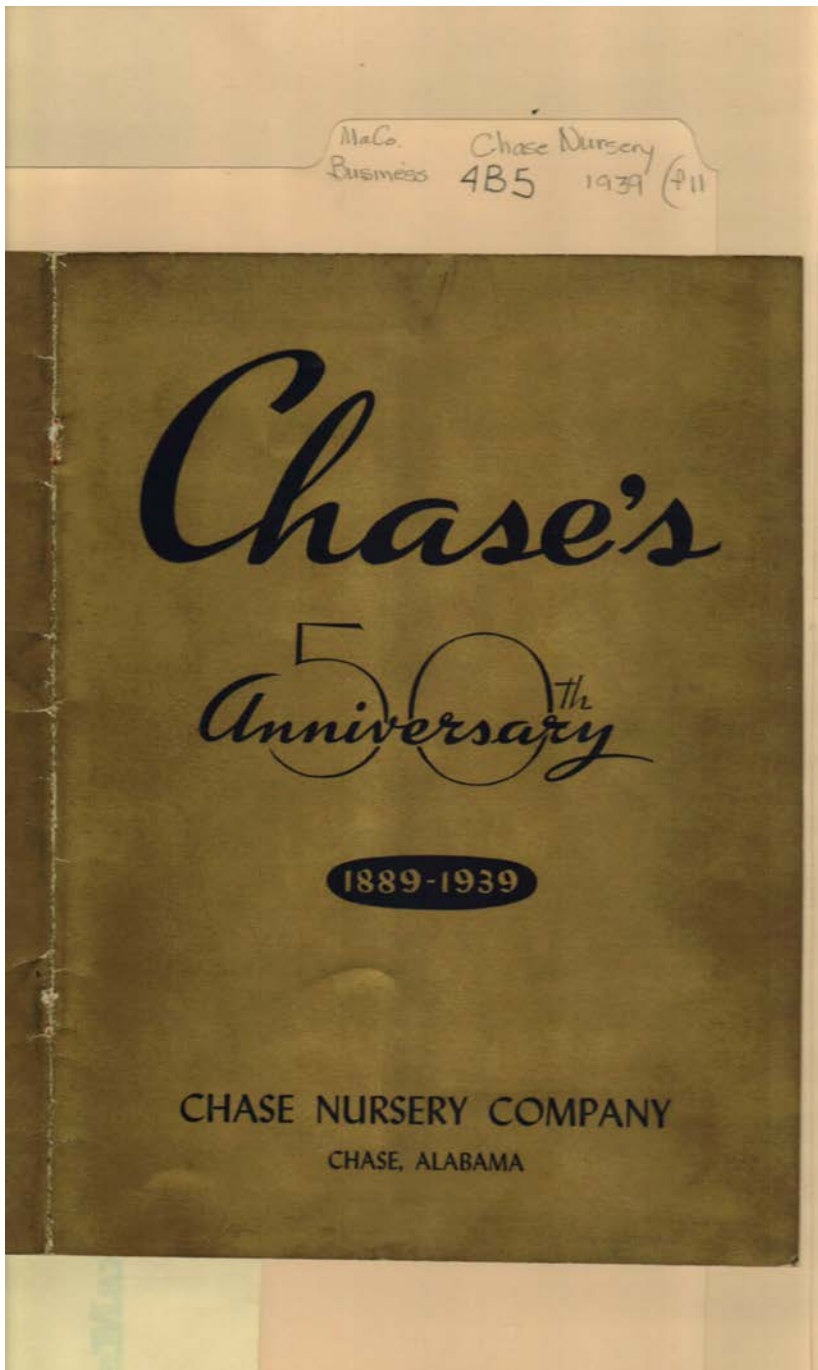


Frances Cabaniss Roberts Collection: Series 4, Subseries B, Box 5, Folder 11

Paper on Henry Chase and Chase Nursery Pamphlet, 1939

Image 1 r04b05-11-000-0423 [Contents](#) [Index](#) [About](#)



Names:

Chase Nursery
Company

Chase's 20th
Anniversary

Places:

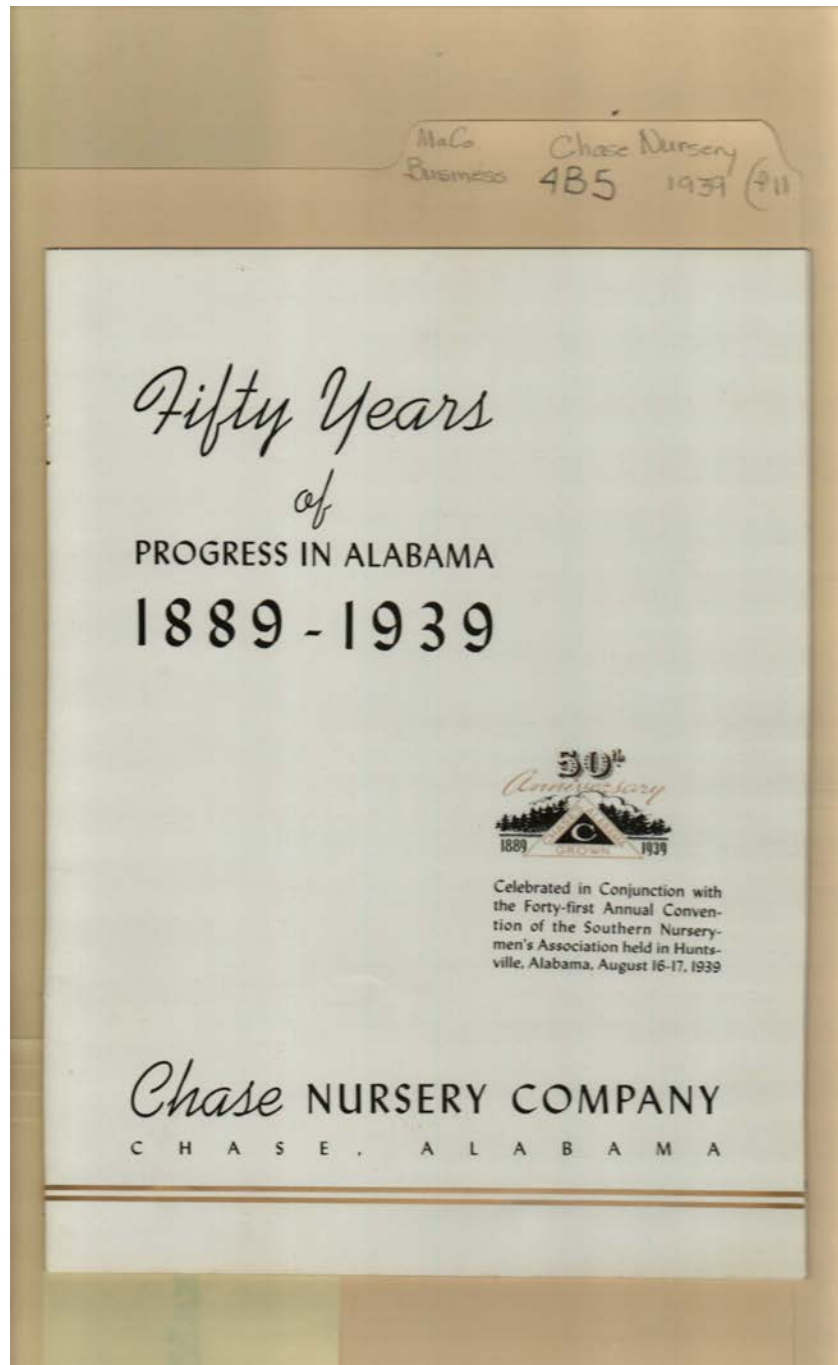
Chase, AL

Types:

booklet

Dates:

1889-1939



Names:

Chase Nursery
Company

Fifty Years of
Progress

Southern
Nurserymen's

Convention

Places:

Chase, AL

Types:

booklet

Dates:

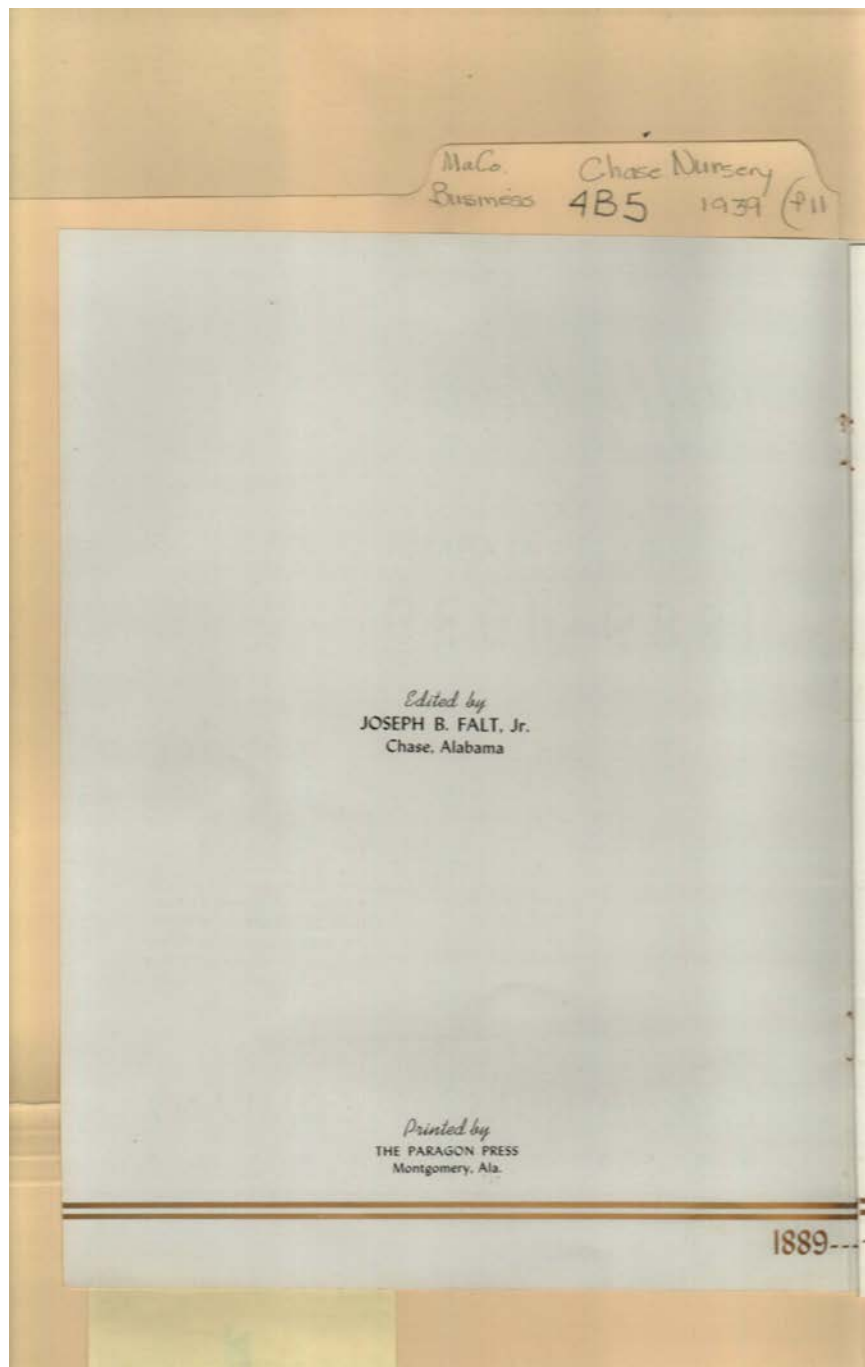
1889-1939

Aug 16, 1939

Frances Cabaniss Roberts Collection: Series 4, Subseries B, Box 5, Folder 11

Paper on Henry Chase and Chase Nursery Pamphlet, 1939

Image 3 r04b05-11-000-0425 [Contents](#) [Index](#) [About](#)



Names:

Falt, Joseph B., Jr.

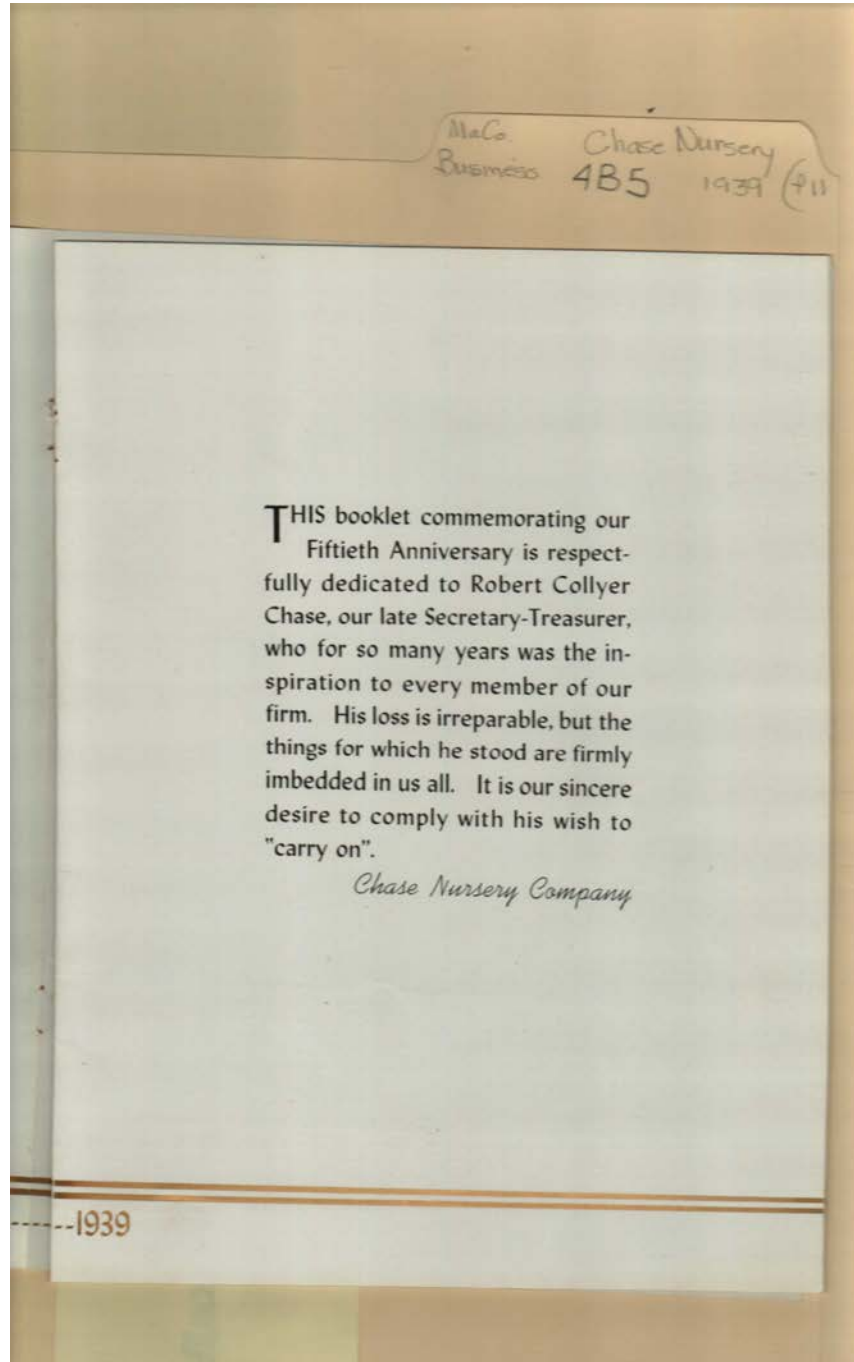
Paragon Press

Places:

Chase, AL

Types:

booklet



Names:

Chase, Robert
Collyer

Places:

Chase, AL

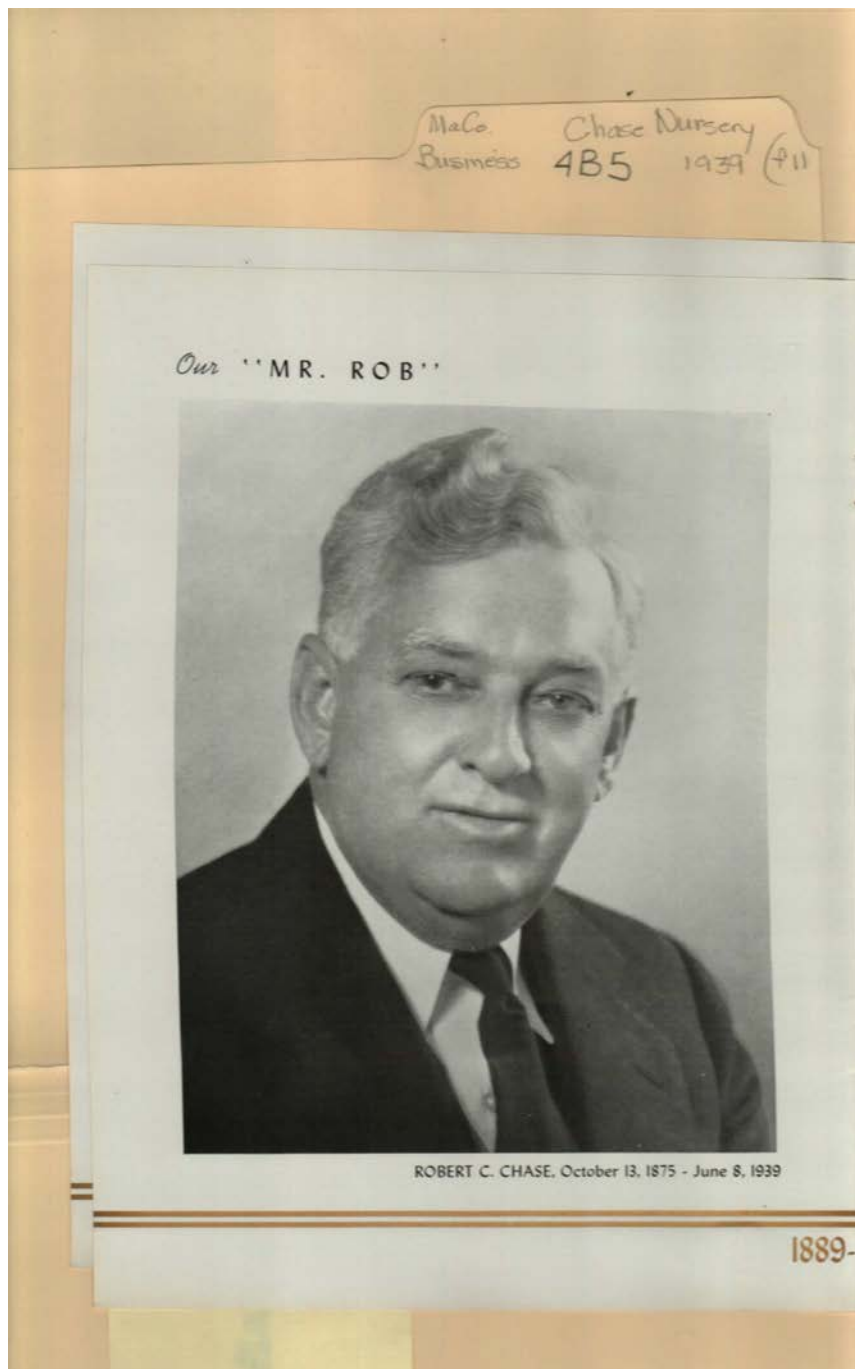
Types:

booklet

Frances Cabaniss Roberts Collection: Series 4, Subseries B, Box 5, Folder 11

Paper on Henry Chase and Chase Nursery Pamphlet, 1939

Image 5 r04b05-11-000-0427 [Contents](#) [Index](#) [About](#)



Names:

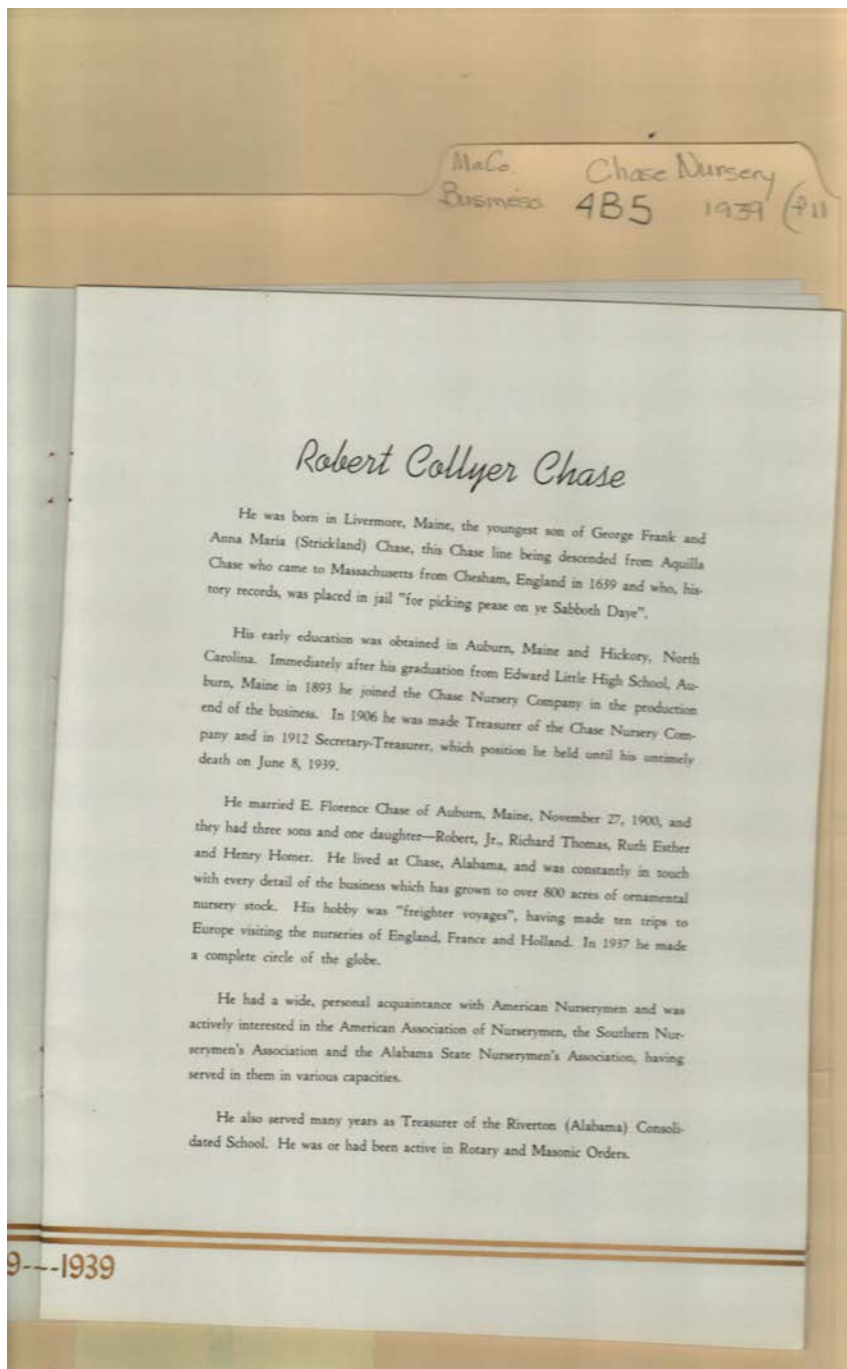
Chase, Robert C.

Places:

Chase, AL

Types:

photo



Robert Collyer Chase

He was born in Livermore, Maine, the youngest son of George Frank and Anna Maria (Strickland) Chase, this Chase line being descended from Aquilla Chase who came to Massachusetts from Chesham, England in 1639 and who, history records, was placed in jail "for picking pease on ye Sabbath Daye".

His early education was obtained in Auburn, Maine and Hickory, North Carolina. Immediately after his graduation from Edward Little High School, Auburn, Maine in 1893 he joined the Chase Nursery Company in the production end of the business. In 1906 he was made Treasurer of the Chase Nursery Company and in 1912 Secretary-Treasurer, which position he held until his untimely death on June 8, 1939.

He married E. Florence Chase of Auburn, Maine, November 27, 1900, and they had three sons and one daughter—Robert, Jr., Richard Thomas, Ruth Esther and Henry Homer. He lived at Chase, Alabama, and was constantly in touch with every detail of the business which has grown to over 800 acres of ornamental nursery stock. His hobby was "freighter voyages", having made ten trips to Europe visiting the nurseries of England, France and Holland. In 1937 he made a complete circle of the globe.

He had a wide, personal acquaintance with American Nurserymen and was actively interested in the American Association of Nurserymen, the Southern Nurserymen's Association and the Alabama State Nurserymen's Association, having served in them in various capacities.

He also served many years as Treasurer of the Riverton (Alabama) Consolidated School. He was or had been active in Rotary and Masonic Orders.

Names:

Chase, Anna Maria Strickland
Chase, Aquilla

Chase, E. Florence
Chase, George Frank
Chase, Henry Homer

Chase, Richard Thomas
Chase, Robert, Jr.

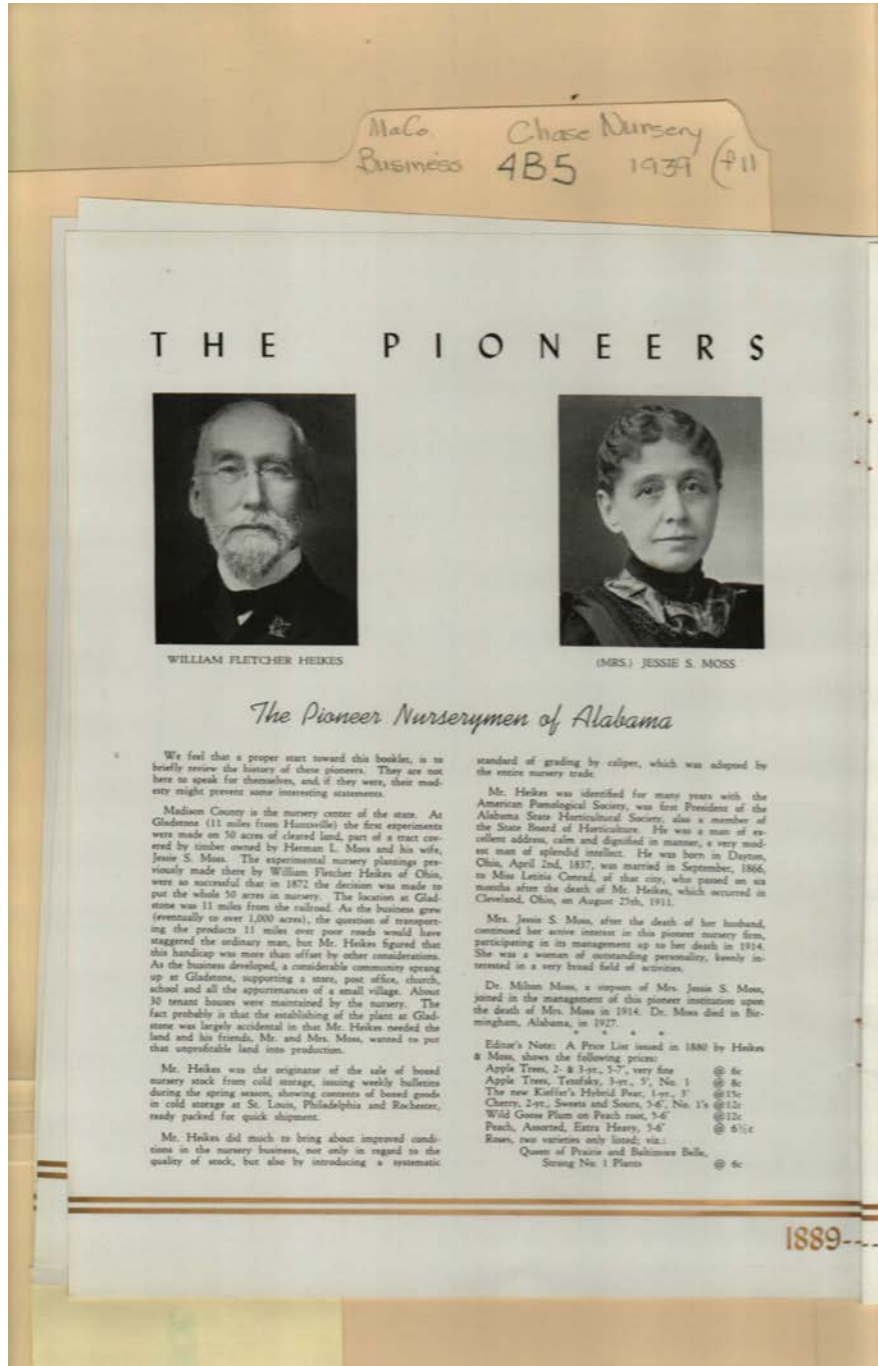
Chase, Ruth Esther
Robert Collyer Chase

Places:

Chase, AL

Types:

booklet



Names:

Conrad, Letitia, Miss
Heikes, William
Fletcher

Moss, Herman L.
Moss, Jessie S., Mrs.
Moss, Milton, Dr.

Pioneer Nurserymen
of Alabama

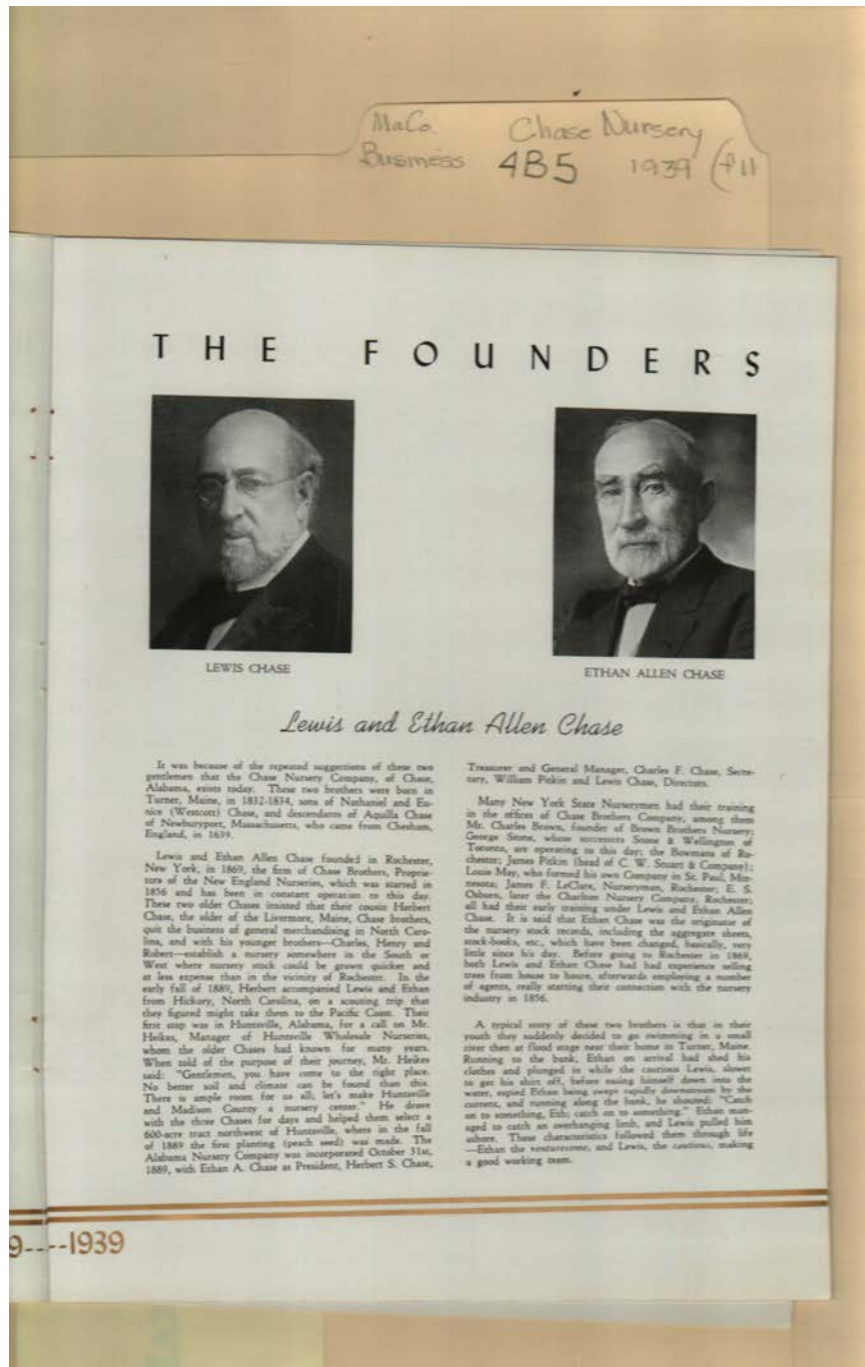
Places:

Chase, AL

Types:

booklet

photo



Names:

Bowman,
Brown Brothers
Nursery
Brown, Charles
Charlton Nursery
Company
Chase Brothers
Nursery

Chase, Aquilla
Chase, Charles F.
Chase, Ethan
Chase, Ethan Allen
Chase, Eunice
Westcott
Chase, Henry
Chase, Herbert S.

Chase, Lewis
Chase, Nathaniel
Chase, Robert
Heikes,
LeClare, James F.
May, Louie
Osborn, E. S.
Pitkin, William

Scone & Wellington
Stone, George
Stuart, C. W. & Co.

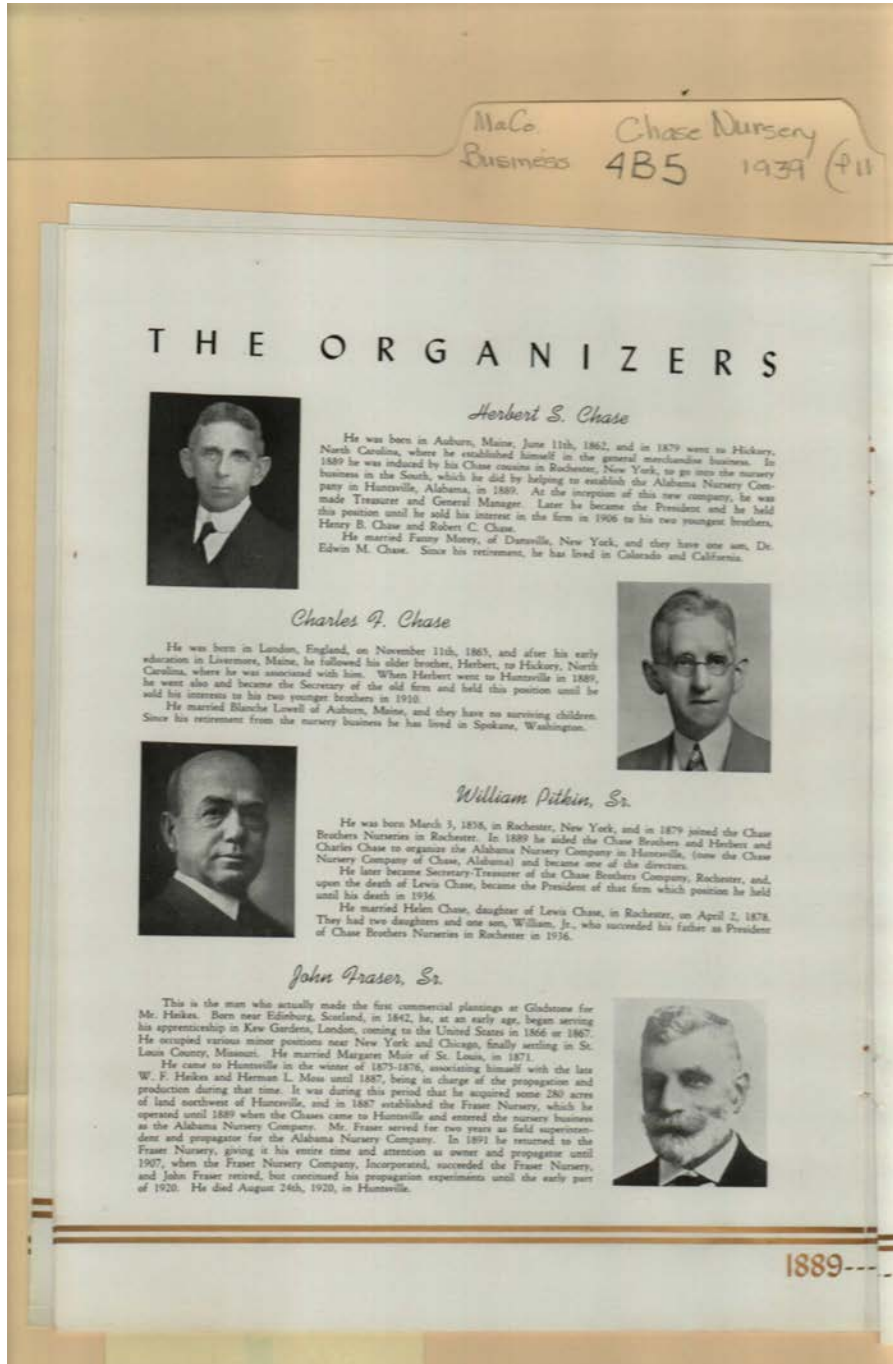
Places:

Chase, AL

Types:

booklet

photo



Names:

Alabama Nursery Co.
Chase, Charles F.
Chase, Edwin M, Dr.
Chase, Helen

Chase, Henry B.
Chase, Herbert S.
Chase, Lewis
Chase, Robert C.

Fraser Nursery
Fraser, John, Sr.
Heikes, W. F.
Lowell, Blanche

Morey, Fanny
Moss, Herman L.
Pitkin, William, Jr.
Pitkin, William, Sr.

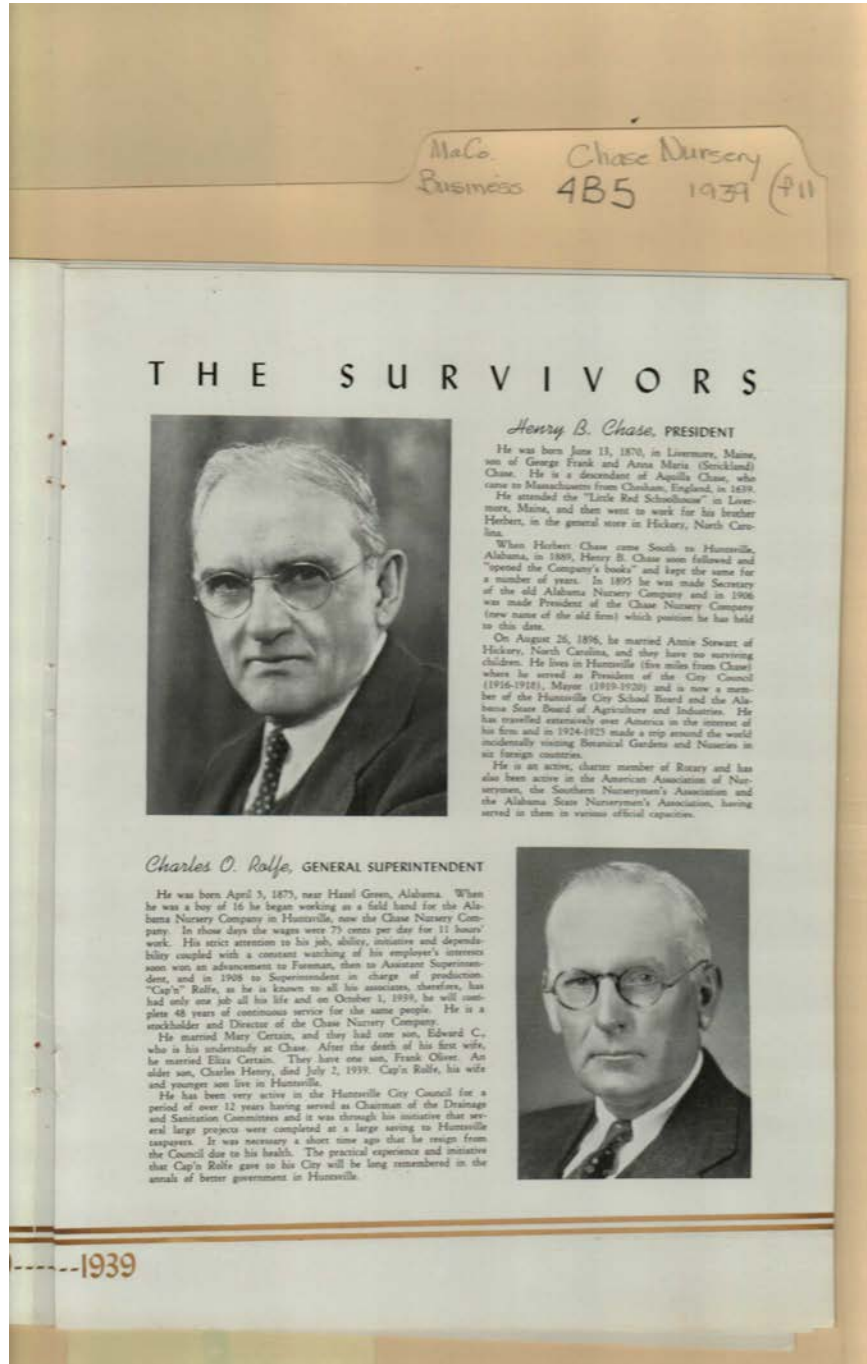
Places:

Chase, AL

Types:

booklet

photo



Names:

Certain, Eliza
Certain, Mary
Chase, Anna Maria
Strickland

Chase, George Frank
Chase, Henry B.
Chase, Herbert
Rolfe, Charles Henry

Rolfe, Charles O.
Rolfe, Edward C.
Rolfe, Frank Oliver
Rolfe, Cap'n

Stewart, Annie

Places:

Chase, AL

Types:

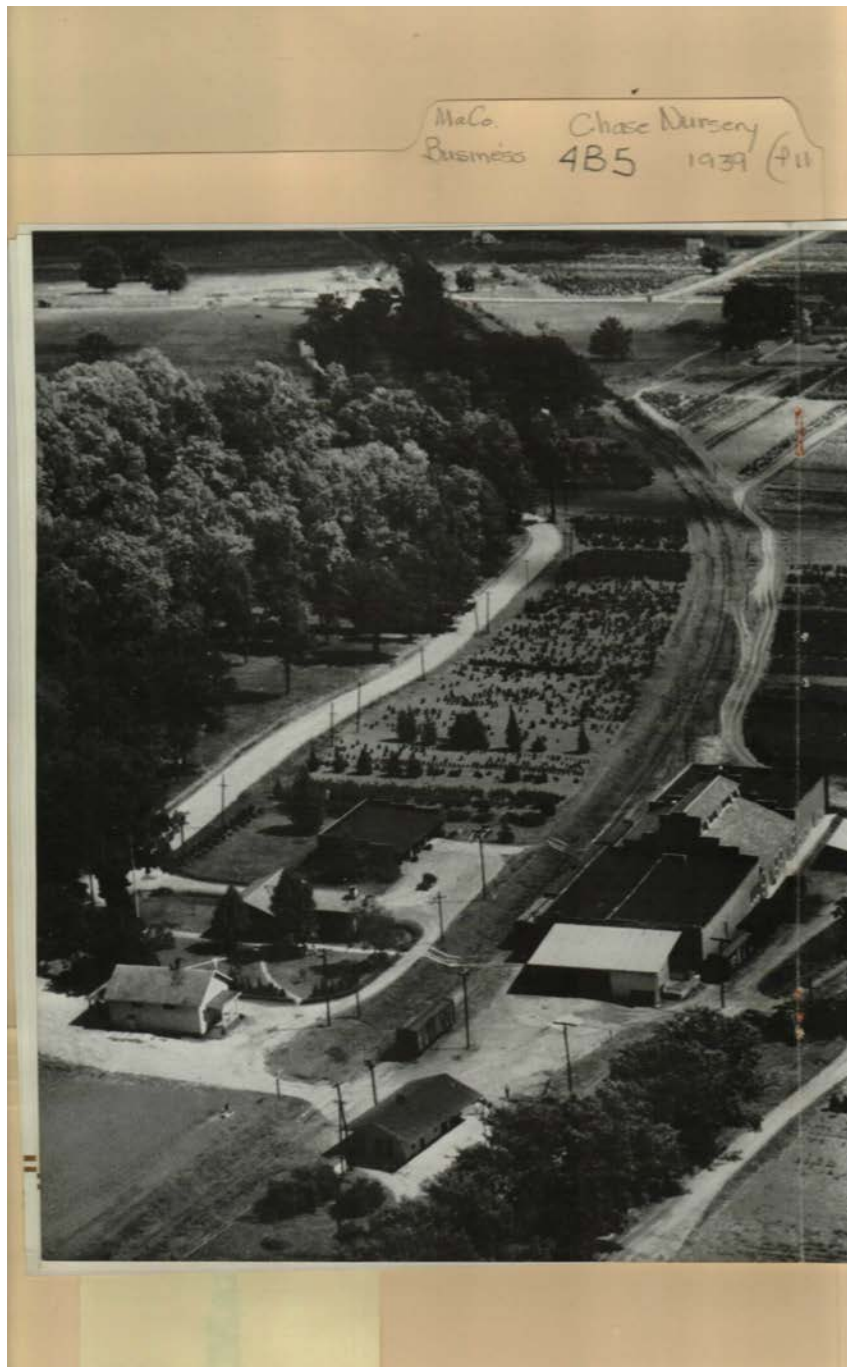
booklet

photo

Frances Cabaniss Roberts Collection: Series 4, Subseries B, Box 5, Folder 11

Paper on Henry Chase and Chase Nursery Pamphlet, 1939

Image 11 r04b05-11-000-0433 [Contents](#) [Index](#) [About](#)



Names:

Nursery Scene

Places:

Chase, AL

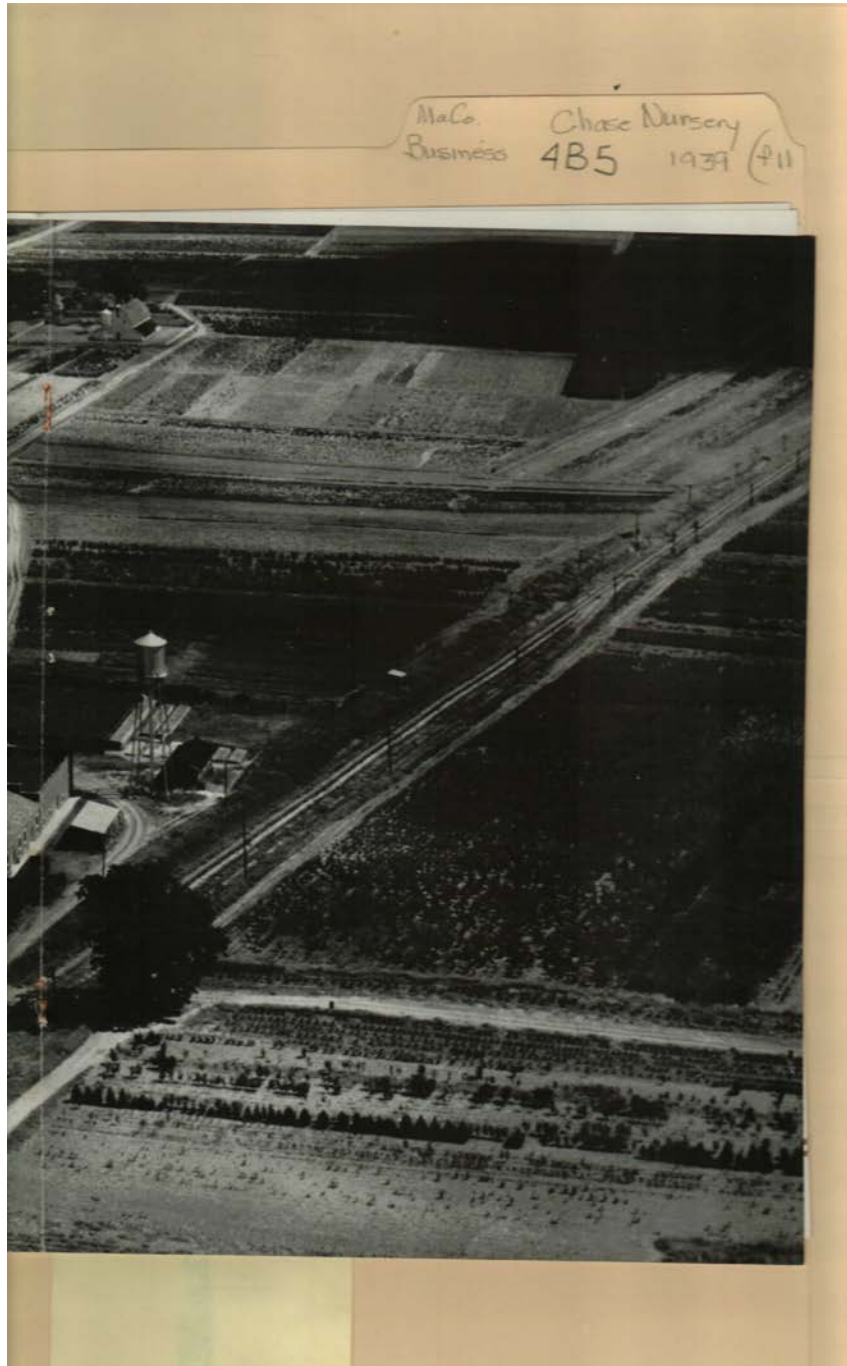
Types:

photo

Frances Cabaniss Roberts Collection: Series 4, Subseries B, Box 5, Folder 11

Paper on Henry Chase and Chase Nursery Pamphlet, 1939

Image 12 r04b05-11-000-0434 [Contents](#) [Index](#) [About](#)



Names:

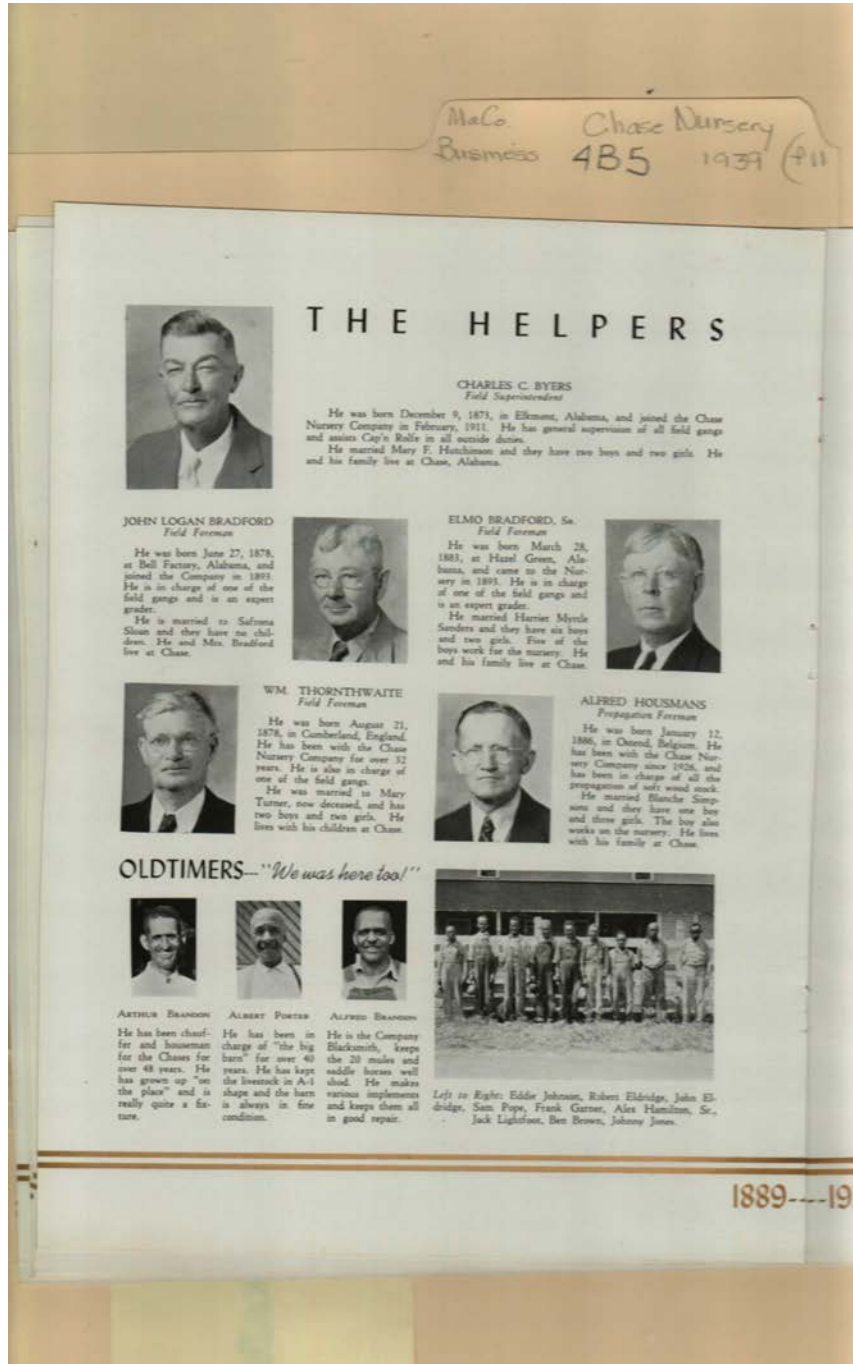
Nursery Scene

Places:

Chase, AL

Types:

photo



Names:

Bradford, Elmo, Sr.
Bradford, John Logan
Brandon, Alfred
Brandon, Arthur
Brown, Ben
Byers, Charles C.
Eldridge, John

Eldridge, Robert
Garner, Frank
Hamilton, Alex, Sr.
Housmans, Alfred
Hutchinson, Mary F.
Johnson, Eddie
Jones, Johnny

Lightfoot, Jack
Pope, Sam
Porter, Albert
Sanders, Harriet
Myrtle
Simpsons, Blanche
Sloan, Safrona

Thornthwaite,
William
Turner, Mary

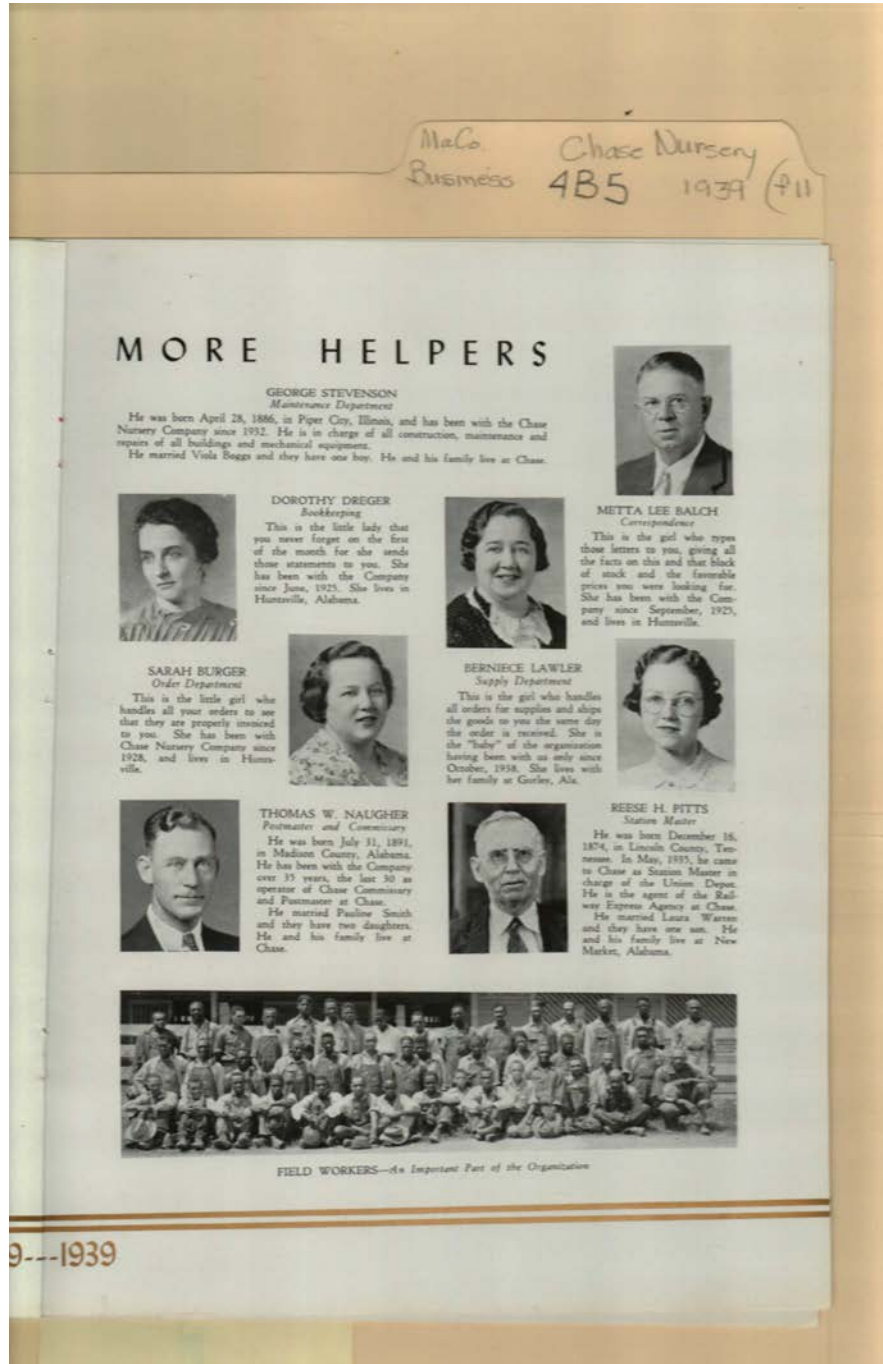
Places:

Chase, AL

Types:

booklet

photo



Names:

Balch, Metta Lee
 Burger, Sarah

Dreger, Dorothy
 Field Workers

Lawler, Berniece
 Naugher, Thomas W.

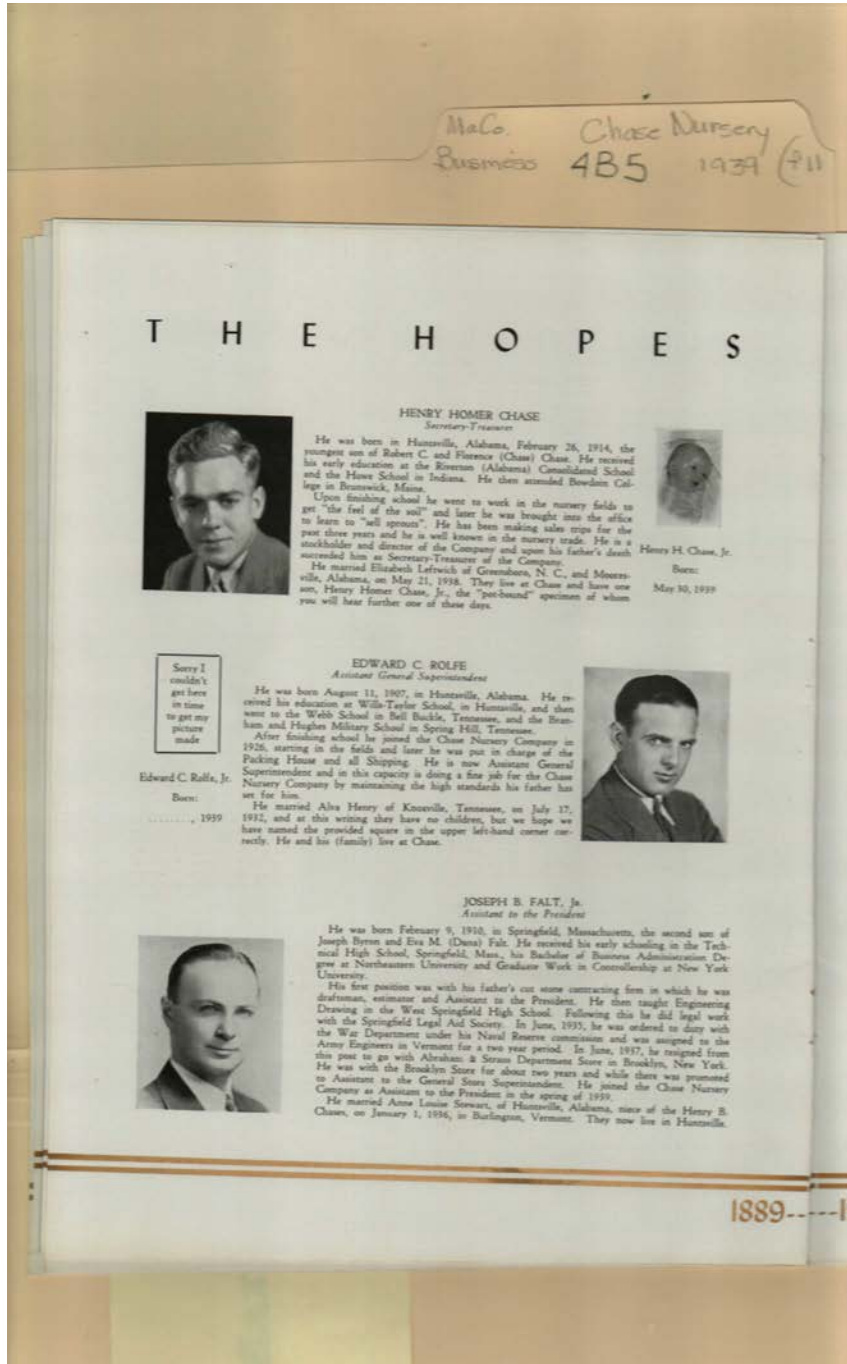
Pitts, Reese H.
 Stevenson, George

Places:

Chase, AL

Types:

photo



Names:

Chase, Florence
 Chase, Henry B.
 Chase, Henry Homer

Chase, Henry Homer, Jr.
 Chase, Robert C.
 Falt, Eva M. (Dana)

Falt, Joseph B., Jr.
 Falt, Joseph Byrom
 Henry, Alva
 Leftwich, Elizabeth

Rolfe, Edward C.
 Stewart, Annie
 Louise

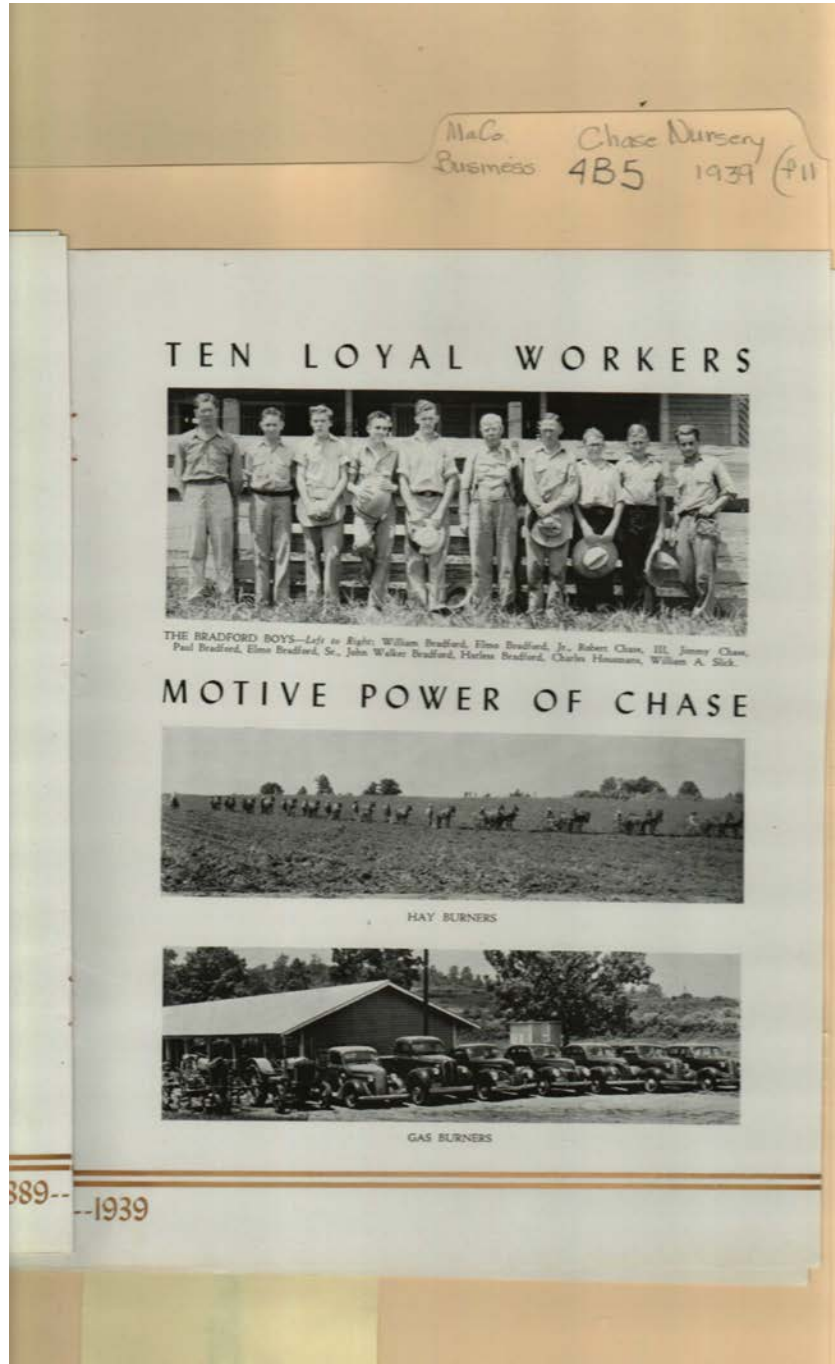
Places:

Chase, AL

Types:

booklet

photo



Names:

Bradford, Elmo, Jr.
Bradford, Elmo, Sr.
Bradford, Harless

Bradford, John
Walker
Bradford, Paul
Bradford, William

Chase, Jimmy
Chase, Robert, III
Gas Burners
Hay Burners

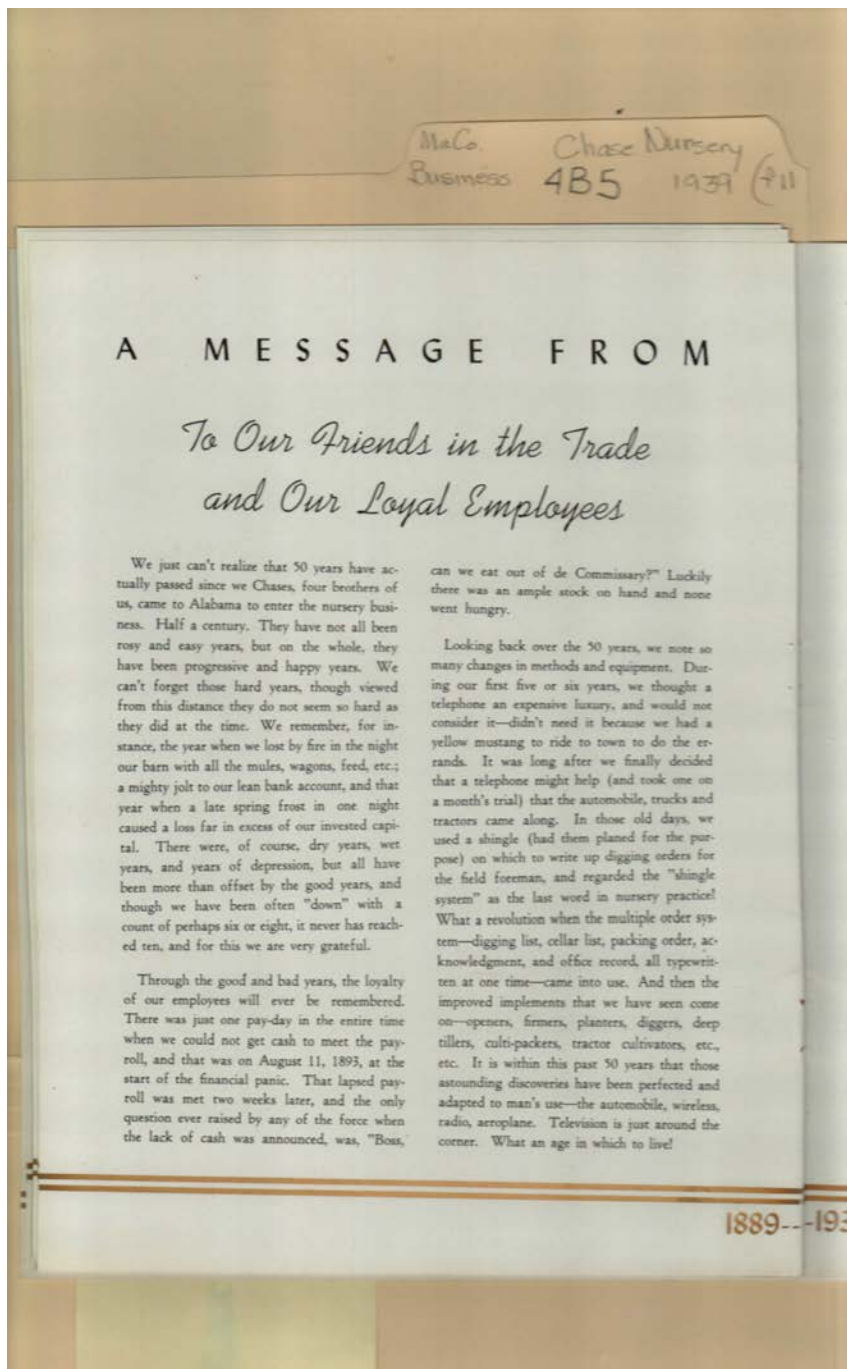
Housmans, Charles
Slick, William A.

Places:

Chase, AL

Types:

photo



Names:

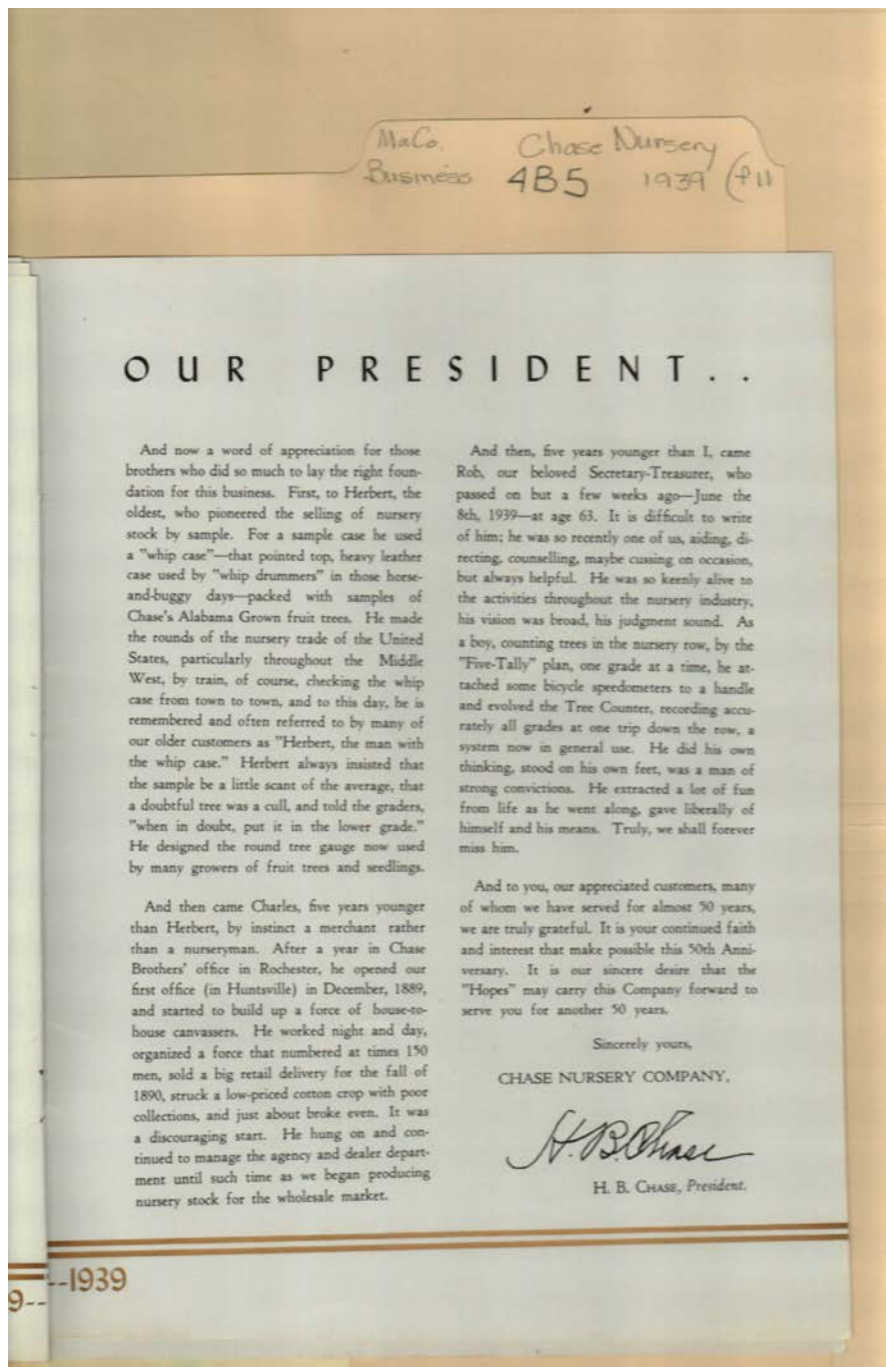
Friends and
Employees

Places:

Chase, AL

Types:

booklet



Names:

, Charles

, Herbert

, Rob

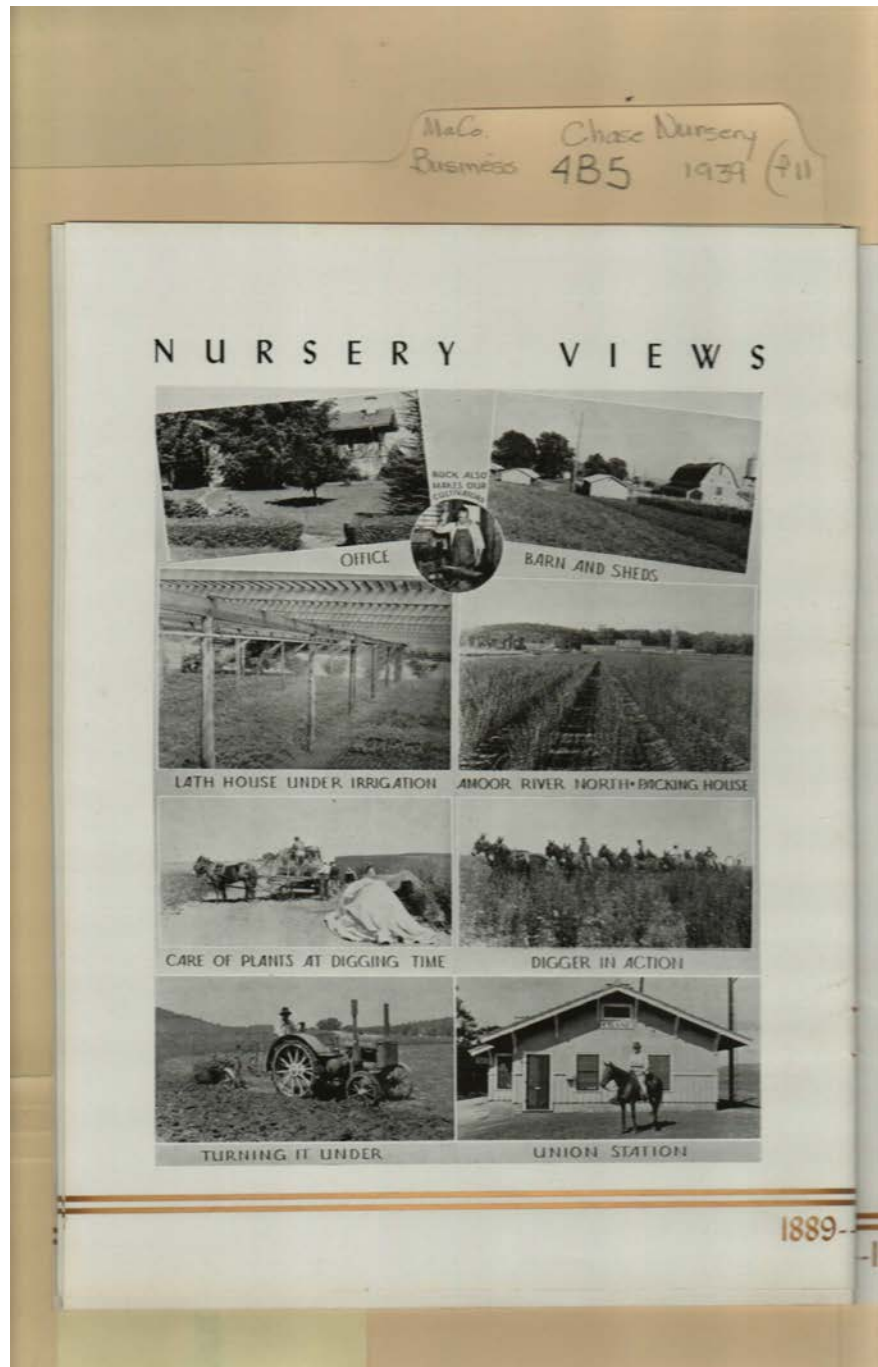
Chase, H. B.

Places:

Chase, AL

Types:

booklet



Names:

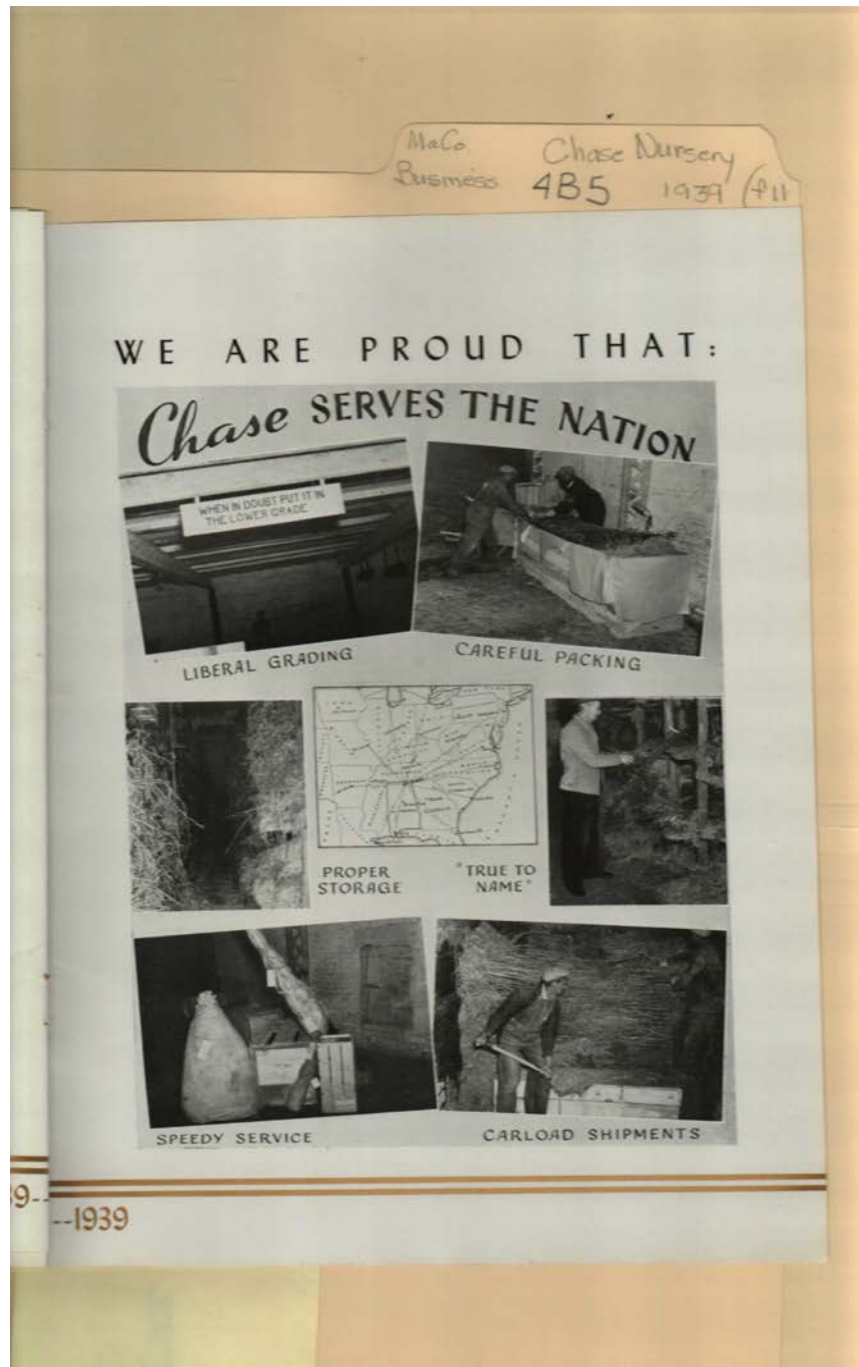
Nursery Scenes

Places:

Chase, AL

Types:

booklet



Names:

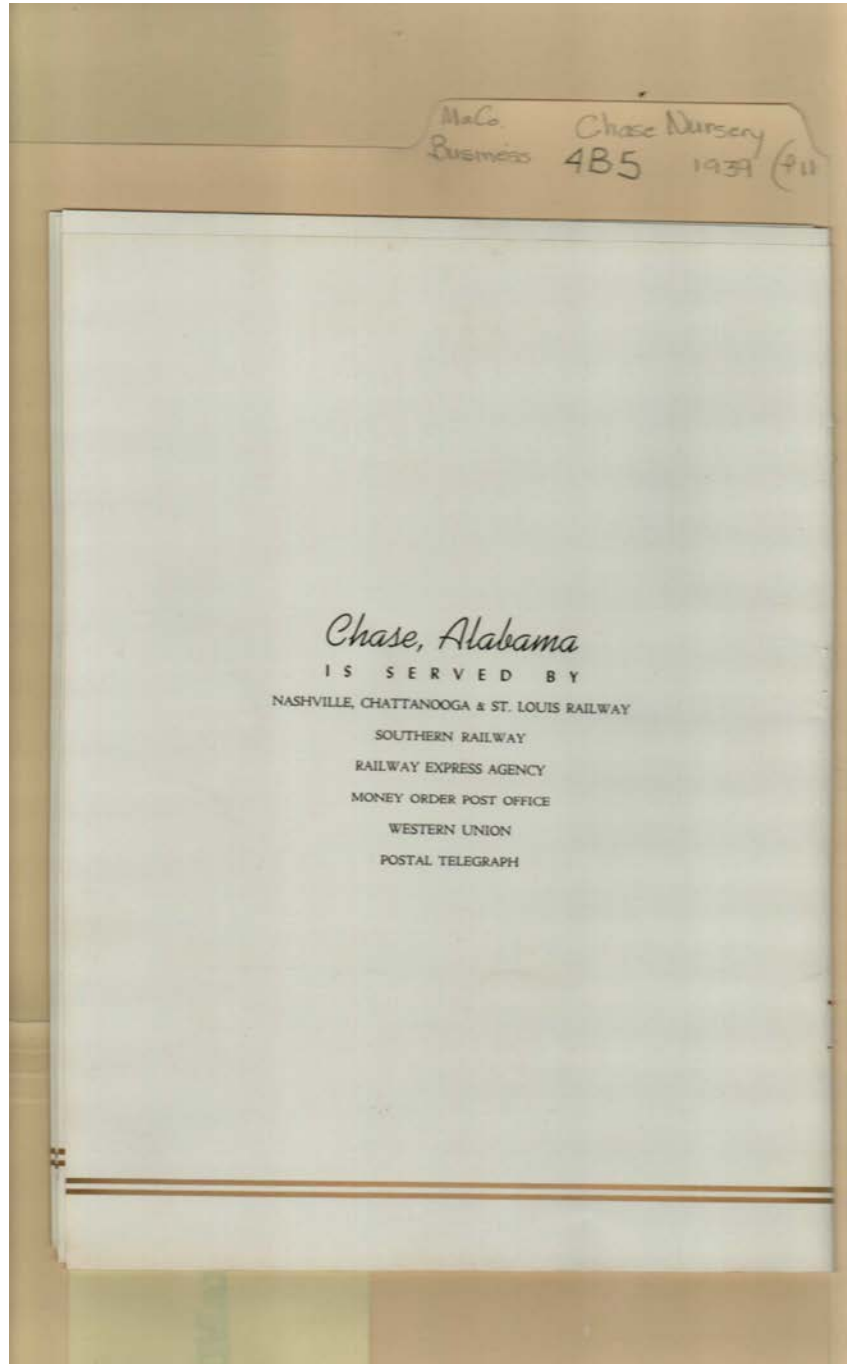
Nursery Scenes

Places:

Chase, AL

Types:

booklet



Names:

Money Order Post Office

Nashville, Chattanooga & St. Louis Railway

Postal Telegraph Railway Express Agency

Southern Railway Western Union

Places:

Chase, AL

Types:

booklet

**Frances Cabaniss Roberts Collection: Series 4, Subseries B, Box 5, Folder 11
Paper on Henry Chase and Chase Nursery Pamphlet, 1939**

[Contents](#) [Index](#) [About](#)

Table of Contents

[Image 1](#) (r04b05-11-000-0423)

[Image 2](#) (r04b05-11-000-0424)

[Image 3](#) (r04b05-11-000-0425)

[Image 4](#) (r04b05-11-000-0426)

[Image 5](#) (r04b05-11-000-0427)

[Image 6](#) (r04b05-11-000-0428)

[Image 7](#) (r04b05-11-000-0429)

[Image 8](#) (r04b05-11-000-0430)

[Image 9](#) (r04b05-11-000-0431)

[Image 10](#) (r04b05-11-000-0432)

[Image 11](#) (r04b05-11-000-0433)

[Image 12](#) (r04b05-11-000-0434)

[Image 13](#) (r04b05-11-000-0435)

[Image 14](#) (r04b05-11-000-0436)

[Image 15](#) (r04b05-11-000-0437)

[Image 16](#) (r04b05-11-000-0438)

[Image 17](#) (r04b05-11-000-0439)

[Image 18](#) (r04b05-11-000-0440)

[Image 19](#) (r04b05-11-000-0441)

[Image 20](#) (r04b05-11-000-0442)

[Image 21](#) (r04b05-11-000-0443)

[Table of Contents](#)

[Name & Place Index](#)

[About the Collection](#)

Frances Cabaniss Roberts Collection: Series 4, Subseries B, Box 5, Folder 11
Paper on Henry Chase and Chase Nursery Pamphlet, 1939

[Contents](#) [Index](#) [About](#)

Name & Place Index

, Charles [18](#)
, Herbert [18](#)
, Rob [18](#)
Alabama Nursery Co. [9](#)
Balch, Metta Lee [14](#)
Bowman, [8](#)
Bradford, Elmo, Jr. [16](#)
Bradford, Elmo, Sr. [13](#), [16](#)
Bradford, Harless [16](#)
Bradford, John Logan [13](#)
Bradford, John Walker [16](#)
Bradford, Paul [16](#)
Bradford, William [16](#)
Brandon, Alfred [13](#)
Brandon, Arthur [13](#)
Brown Brothers Nursery [8](#)
Brown, Ben [13](#)
Brown, Charles [8](#)
Burger, Sarah [14](#)
Byers, Charles C. [13](#)
Certain, Eliza [10](#)
Certain, Mary [10](#)
Charlton Nursery Company [8](#)
Chase Brothers Nursery [8](#)
Chase Nursery Company [1](#), [2](#)
Chase's 20th Anniversary [1](#)
Chase, AL [1](#), [2](#), [3](#), [4](#), [5](#), [6](#), [7](#), [8](#), [9](#), [10](#), [11](#), [12](#), [13](#), [14](#), [15](#),
[16](#), [17](#), [18](#), [19](#), [20](#), [21](#)
Chase, Anna Maria Strickland [6](#), [10](#)
Chase, Aquilla [6](#), [8](#)
Chase, Charles F. [8](#), [9](#)
Chase, E. Florence [6](#)
Chase, Edwin M, Dr. [9](#)
Chase, Ethan Allen [8](#)
Chase, Ethan [8](#)
Chase, Eunice Westcott [8](#)
Chase, Florence [15](#)
Chase, George Frank [6](#), [10](#)
Chase, H. B. [18](#)
Chase, Helen [9](#)
Chase, Henry B. [9](#), [10](#), [15](#)
Chase, Henry Homer, Jr. [15](#)
Chase, Henry Homer [6](#), [15](#)
Chase, Henry [8](#)
Chase, Herbert S. [8](#), [9](#)
Chase, Herbert [10](#)
Chase, Jimmy [16](#)
Chase, Lewis [8](#), [9](#)
Chase, Nathaniel [8](#)
Chase, Richard Thomas [6](#)
Chase, Robert C. [9](#), [15](#)
Chase, Robert Collyer [4](#)
Chase, Robert, III [16](#)
Chase, Robert, Jr. [6](#)
Chase, Robert [8](#)
Chase, Robert C. [5](#)
Chase, Ruth Esther [6](#)
Conrad, Letitia, Miss [7](#)
Dreger, Dorothy [14](#)
Eldridge, John [13](#)
Eldridge, Robert [13](#)
Falt, Eva M. (Dana) [15](#)
Falt, Joseph B., Jr. [3](#), [15](#)
Falt, Joseph Byrom [15](#)
Field Workers [14](#)
Fifty Years of Progress [2](#)
Fraser Nursery [9](#)
Fraser, John, Sr. [9](#)
Friends and Employees [17](#)
Garner, Frank [13](#)
Gas Burners [16](#)
Hamilton, Alex, Sr. [13](#)
Hay Burners [16](#)
Heikes, William Fletcher [7](#)
Heikes, [8](#)
Henry, Alva [15](#)
Hiekes, W. F. [9](#)
Housmans, Alfred [13](#)
Housmans, Charles [16](#)
Hutchinson, Mary F. [13](#)
Johnson, Eddie [13](#)
Jones, Johnny [13](#)
Lawler, Berniece [14](#)
LeClare, James F. [8](#)
Leftwich, Elizabeth [15](#)
Lightfoot, Jack [13](#)
Lowell, Blanche [9](#)
May, Louie [8](#)
Money Order Post Office [21](#)
Morey, Fanny [9](#)
Moss, Herman L. [7](#), [9](#)
Moss, Jessie S., Mrs. [7](#)
Moss, Milton, Dr. [7](#)
Nashville, Chattanooga & St. Louis Railway [21](#)
Naugher, Thomas W. [14](#)
Nursery Scenes [19](#), [20](#)
Nursery Scene [11](#), [12](#)
Osborn, E. S. [8](#)
Paragon Press [3](#)
Pioneer Nurserymen of Alabama [7](#)
Pitkin, William, Jr. [9](#)
Pitkin, William, Sr. [9](#)
Pitkin, William [8](#)
Pitts, Reese H. [14](#)

Pope, Sam [13](#)
Porter, Albert [13](#)
Postal Telegraph [21](#)
Railway Express Agency [21](#)
Robert Collyer Chase [6](#)
Rolfe, Cap'n [10](#)
Rolfe, Charles Henry [10](#)
Rolfe, Charles O. [10](#)
Rolfe, Edward C. [10](#), [15](#)
Rolfe, Frank Oliver [10](#)
Sanders, Harriet Myrtle [13](#)
Scone & Wellington [8](#)
Simpsons, Blanche [13](#)

Slick, William A. [16](#)
Sloan, Safrona [13](#)
Southern Nurserymen's Convention [2](#)
Southern Railway [21](#)
Stevenson, George [14](#)
Stewart, Annie Louise [15](#)
Stewart, Annie [10](#)
Stone, George [8](#)
Stuart, C. W. & Co. [8](#)
Thornthwaite, William [13](#)
Turner, Mary [13](#)
Western Union [21](#)

Frances Cabaniss Roberts Collection

Preferred Citation: Frances Cabaniss Roberts Collection, Archives and Special Collections, M. Louis Salmon Library, University of Alabama in Huntsville, Huntsville, AL.

Collection Scope and Content: The Collection of 114 Linear ft. includes a total of 156 Archival Boxes. The Frances Cabaniss Roberts collection covers the historical records of the Cabaniss Roberts family. This collection contains extensive correspondence records of the Cabaniss Roberts family circa 1830 to 1930.

Archives/Special Collections Access Restrictions: None

Conditions Governing Use: This material may be protected under U. S. Copyright Law (Title 17, U.S. Code) which governs the making of photocopies or reproductions of copyrighted materials. You may use the digitized material for private study, scholarship, or research. Though the University of Alabama in Huntsville Archives and Special Collections has physical ownership of the material in its collections, in some cases we may not own the copyright to the material. It is the patron's obligation to determine and satisfy copyright restrictions when publishing or otherwise distributing materials found in our collections.

Provenance: Gift of Johanna Shields on October 28, 2006.



THE UNIVERSITY OF
ALABAMA IN HUNTSVILLE

**The UAH Archives and Special Collections
M. Louis Salmon Library**