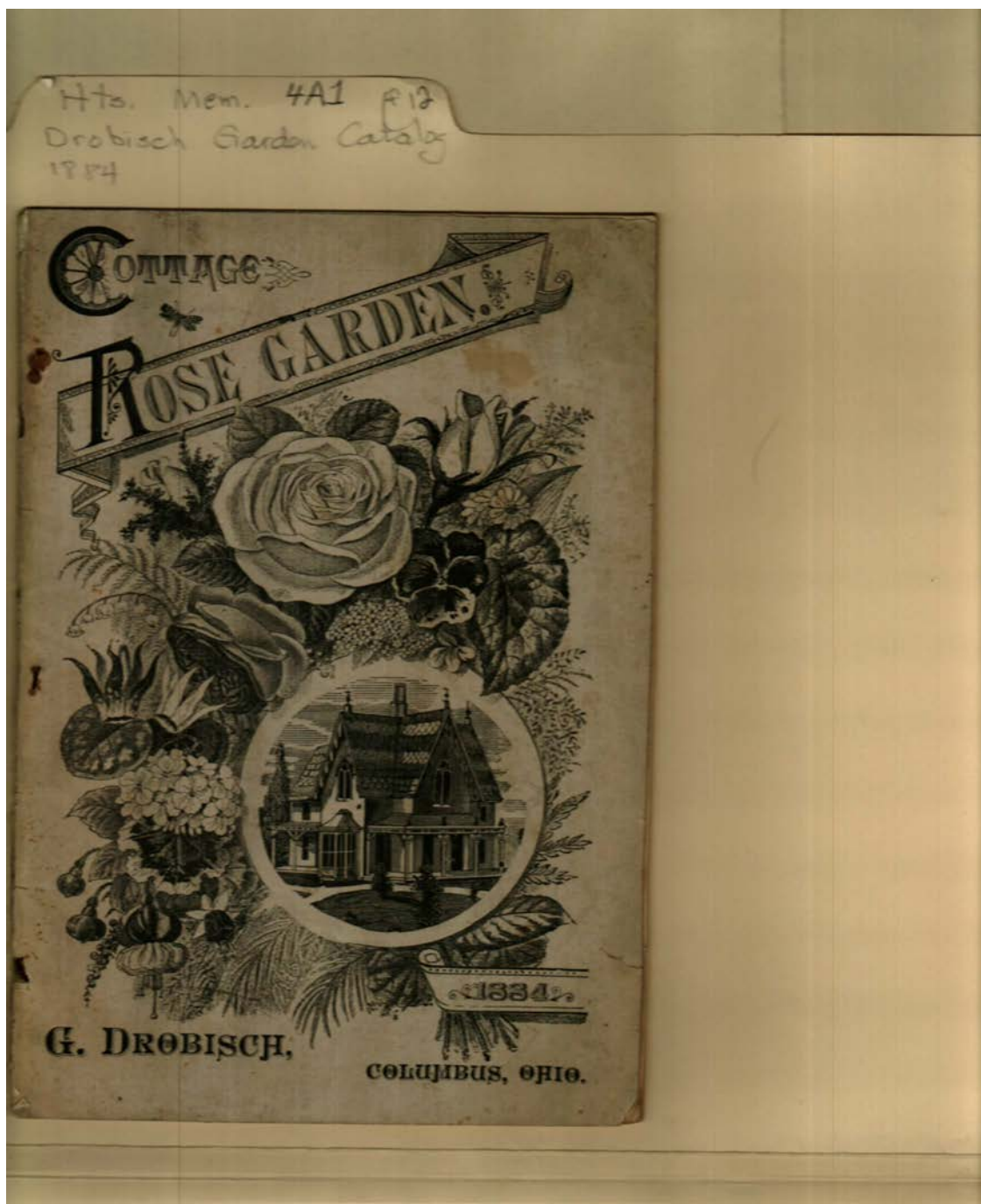


Frances Cabaniss Roberts Collection: Series 4, Subseries A, Box 1, Folder 12

Drobisch Garden Catalog, 1884 - Early Huntsville Life and Memorabilia

Image 1 r04a01-12-000-0005 [Contents](#) [Index](#) [About](#)



**Names:**

Cottage Rose Garden

Drobisch, G.

**Places:**

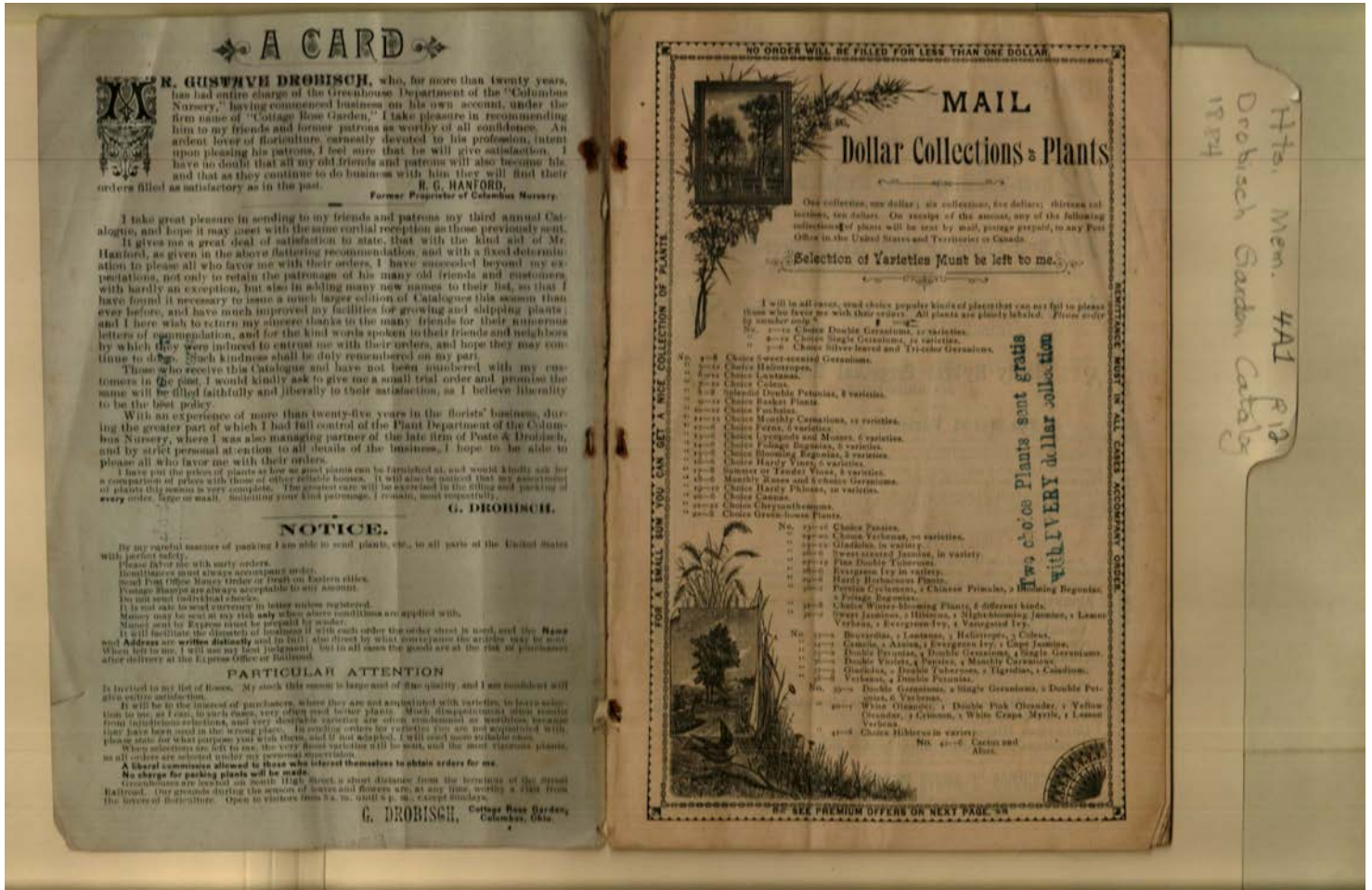
Columbus, OH

**Types:**

catalog

**Dates:**

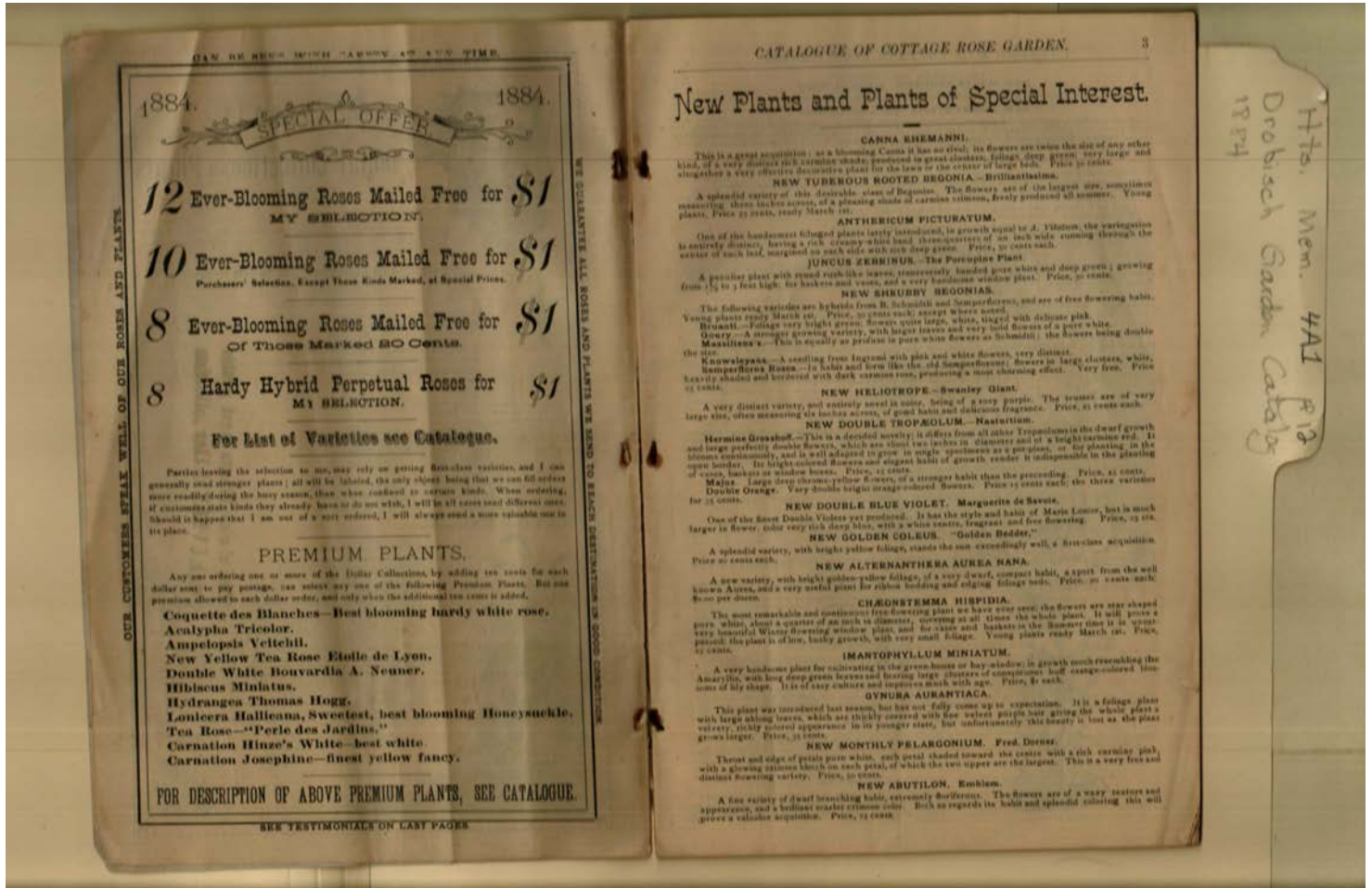
1884



**Names:**  
 Columbus Nursery                      Cottage Rose Garden                      Hanford, R. G.

**Places:**  
 Columbus, OH

**Types:**  
 catalog



Names:

New Plants

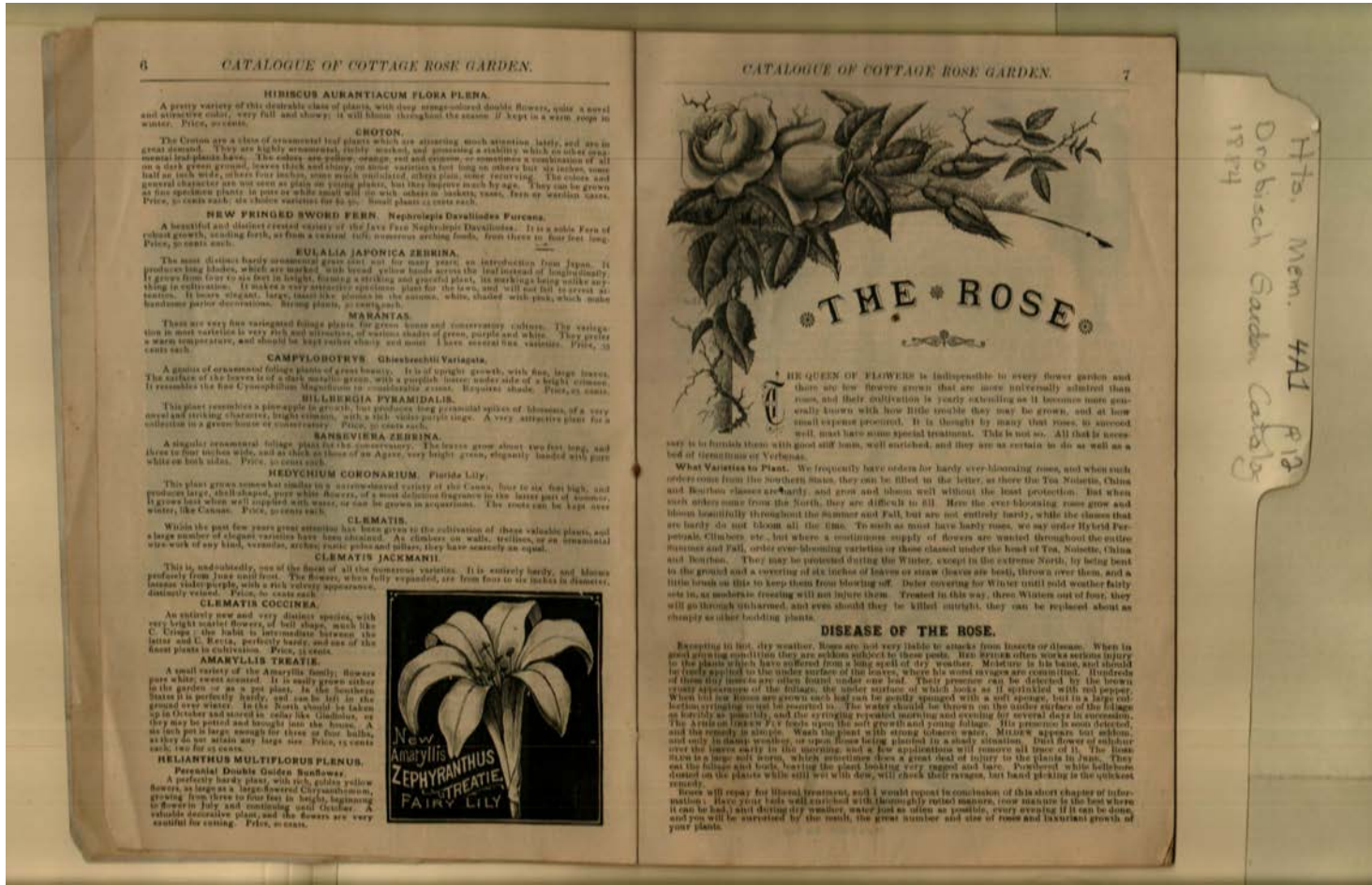
Special Offer

Types:

catalog

Dates:

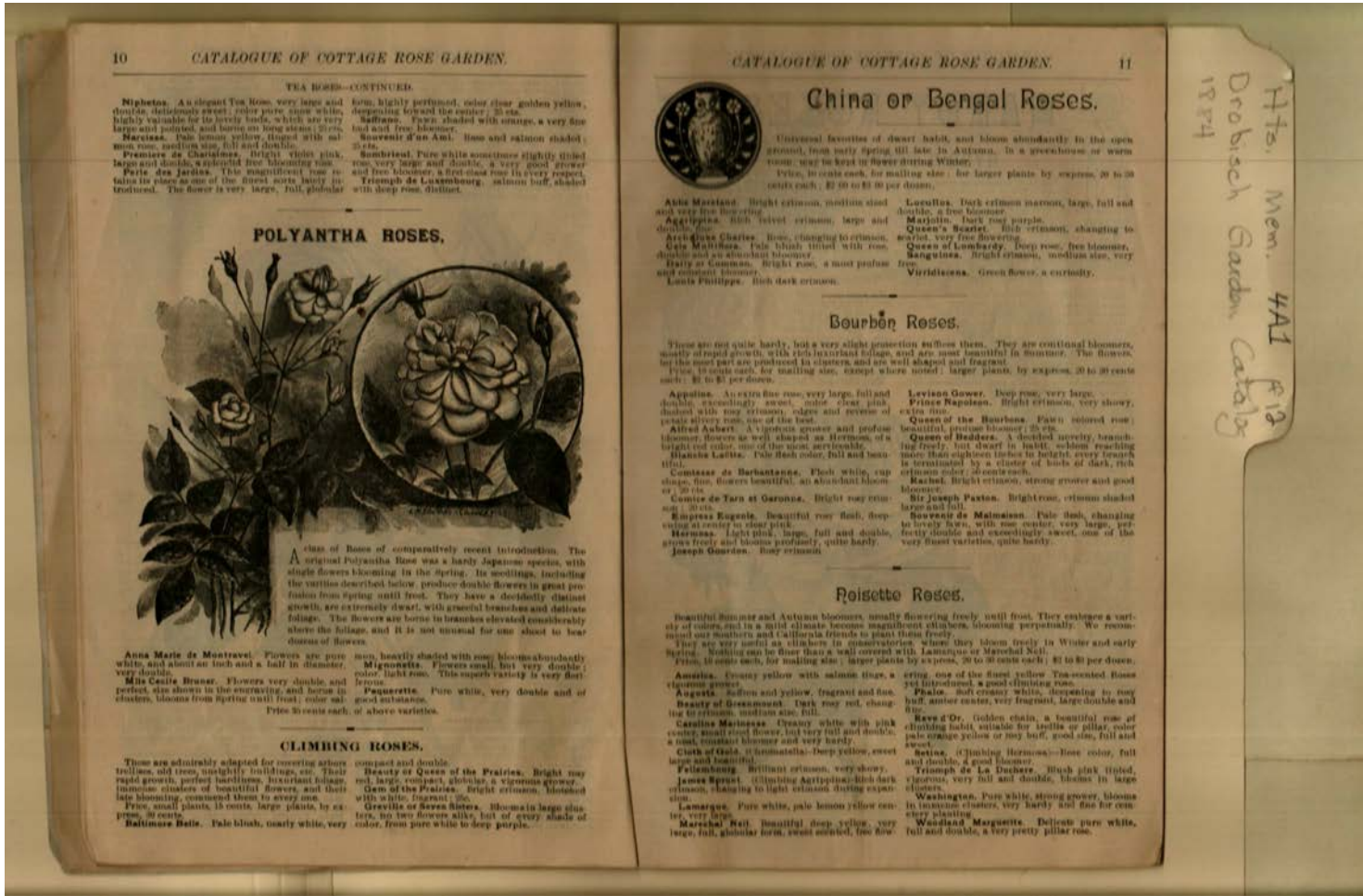
1884



Names:  
 The Rose  
 Types:  
 catalog



Names:  
 Ever-blooming Roses  
 Types:  
 catalog



**Names:**  
 China Roses  
**Types:**  
 catalog

TEA ROSES—CONTINUED.

**Niphetos.** A elegant Tea Rose, very large and double, deliciously sweet, color pure rose white, highly valuable for its lovely buds, which are very large and isolated, and borne on long stems; 50 cts.  
**Marciana.** Pale lemon yellow, fringed with salmon, more and more open, full and double.  
**Premiere de Chateaux.** Bright violet pink, large and double, a splendid free blooming rose.  
**Paris des Jardins.** This magnificent rose retains its place as one of the finest sorts lately introduced. The flower is very large, full, globular form, highly perfumed, color clear golden yellow, deepening toward the center; 25 cts.  
**Saffrane.** Tawny shaded with orange, a very fine bud and free bloomer.  
**Souvenir d'un Ami.** Rose and salmon shaded; 25 cts.  
**Sombriol.** Pure white sometimes slightly tinged rose, very large and double, a very good grower and free bloomer, a first class rose in every respect.  
**Triumph de Luxembourg.** salmon buff, shaded with deep rose, distinct.

POLYANTHA ROSES.



A class of roses of comparatively recent introduction. The original Polyantha Rose was a hardy Japanese species, with single flowers blooming in the spring. Its seedlings, including the varieties described below, produce double flowers in great profusion from spring until frost. They have a decidedly distinct growth, are extremely dwarf, with graceful branches and delicate foliage. The flowers are borne in branches elevated considerably above the foliage, and it is not unusual for one shoot to bear dozens of flowers.

**Anna Marie de Montraval.** Flowers are pure white, and about an inch and a half in diameter, very double.  
**Mrs. Cecilia Brewer.** Flowers very double and perfect, six shown in the accompanying and borne in clusters, blooms from spring until frost; color salmon.  
**Mignonnelle.** Flowers small, but very double; color light rose. This variety is very fast growing.  
**Pequeurette.** Pure white, very double and of good substance.  
 Price 50 cents each, of above varieties.

CLIMBING ROSES.

These are admirably adapted for covering arbors, trellises, old trees, outhouses, buildings, etc. Their rapid growth, perfect hardiness, luxuriant foliage, numerous clusters of beautiful flowers, and their late blooming, commended them to every one.  
**Price, small plants, 15 cents; large plants, by express, 30 cents.**  
**Baltimore Belle.** Pale blush, nearly white, very compact and double.  
**Beauty of Queen of the Prairies.** Bright rose red, large, compact, globular, a vigorous grower.  
**Gem of the Prairies.** Bright crimson, bloomed with a white fragment.  
**Graville or Seven Sisters.** Blooms in large clusters, no two flowers alike, but of every shade of color, from pure white to deep purple.

China or Bengal Roses.



Universal favorites of dwarf habit, and bloom abundantly in the open ground, from early spring till late in Autumn. In a greenhouse or warm room, may be kept in flower during Winter.  
**Price, in cents each, for mailing size; for larger plants by express, 20 to 25 cents each; \$2.00 to \$3.00 per dozen.**

**Atala Marston.** Bright crimson, medium sized and very free flowering.  
**Agrippina.** Rich velvet crimson, large and double.  
**Archduchess Charlotte.** Rose, changing to crimson.  
**Che. Mathilda.** Pale blue tinged with rose, double and an abundant bloomer.  
**Henry of Commons.** Bright rose, a most profuse and elegant bloomer.  
**Louis Philippe.** Rich dark crimson.  
**Louisa.** Dark crimson narrow, large, full and double, a free bloomer.  
**Maximilian.** Dark rose purple.  
**Queen's Scarlet.** Rich crimson, changing to white, very free flowering.  
**Queen of Lombardy.** Deep rose, free bloomer.  
**Sanguinea.** Bright crimson, medium size, very free.  
**Viridiflora.** Green flower, a curiosity.

Bourbon Roses.

These are not quite hardy, but a very slight protection suffices them. They are continual bloomers, mostly of rapid growth, with rich luxuriant foliage, and are most beautiful in summer. The flowers, for the most part are produced in clusters, and are well shaped and fragrant.  
**Price, in cents each, for mailing size, except where noted; large plants, by express, 20 to 25 cents each; \$2 to \$3 per dozen.**  
**Appoline.** An extra fine rose, very large, full and double, exceedingly sweet, color clear pink shaded with very crimson, edges and reverse of petals silvery rose, one of the best.  
**Alfred Aubert.** A vigorous grower and profuse bloomer, flowers as well shaped as Hermon, of a bright red color, one of the most agreeable.  
**Blanche Laiton.** Pale flesh color, full and beautiful.  
**Comtesse de Barbanterre.** Flesh white, cup shape, fine, flowers beautiful, an abundant bloomer; 20 cts.  
**Comte de Tarn et Garonne.** Bright rose crimson; 20 cts.  
**Empress Eugenie.** Beautiful rose flesh, deepening at center to rose pink.  
**Hermon.** Light pink, large, full and double, grows freely and blooms profusely, quite hardy.  
**Joseph Gordon.** Rose crimson.  
**Levian Gower.** Deep rose, very large.  
**Prince Napoleon.** Bright crimson, very showy, extra fine.  
**Queen of the Bourbons.** Fawn colored rose; beautiful, profuse bloomer; 25 cts.  
**Queen of Bedouins.** A double variety, branching freely, but dwarf in habit, seldom reaching more than eighteen inches in height, every branch is terminated by a cluster of buds of dark, rich crimson color, abundant.  
**Rachel.** Bright crimson, strong grower and good bloomer.  
**Sir Joseph Paxton.** Bright rose, crimson shaded large and full.  
**Souvenir de Malmaison.** Pale flesh, changing to lovely lawn, with rose center, very large, perfectly double and exceedingly sweet, one of the very finest varieties, quite hardy.

Roisette Roses.

Beautiful Summer and Autumn bloomers, usually flowering freely until frost. They embrace a variety of colors, and in a mild climate become magnificent climbers, blooming perpetually. We recommend our southern and California friends to plant them freely. They are very useful as climbers in conservatories, where they bloom freely in Winter and early Spring. Nothing can be finer than a wall covered with Lamarque or Marshal Niel.  
**Price, in cents each, for mailing size; larger plants by express, 20 to 25 cents each; \$2 to \$3 per dozen.**  
**Amelia.** Creamy yellow with salmon tinge, a vigorous grower.  
**Angela.** Salmon and yellow, fragrant and fine.  
**Beauty of Government.** Dark rose red, changing to crimson, medium size, full.  
**Caroline Malherbe.** Creamy white with pink center, small sized flower, but very full and double, a most constant bloomer and very hardy.  
**Clash of Gales, or Hornet's-bell.** Deep yellow, erect large and beautiful.  
**Felsenburg.** Brilliant crimson, very showy.  
**James Spriet.** Climbing Agrippina; Rich dark crimson, changing to light salmon during expansion.  
**Lamarque.** Pure white, pale lemon yellow center, very large.  
**Marshal Niel.** Beautiful deep yellow, very large, full, globular form, sweet scented, free flowering, one of the finest yellow Tea-scented Roses yet introduced, a good climbing rose.  
**Phlox.** Soft creamy white, descending to rose buff, amber center, very fragrant, large double and full.  
**Rose d'Or.** Golden chain, a beautiful rose of climbing habit, suitable for trellis or pillar, color pale orange yellow or rose buff, good size, full and sweet.  
**Rosine.** Climbing Hermon;—Rose color, full and double, a good bloomer.  
**Triumph de La Duchesse.** Blush pink tinged, vigorous, very full and double, blooms in large clusters.  
**Washington.** Pure white, strong grower, blooms in immense clusters, very hardy and fine for covering plantings.  
**Woodland Marguerite.** Delicate pure white, full and double, a very pretty pillar rose.

Hts. Mem. 4A1 p. 12  
 Drobisch Garden Catalog  
 1884



**Names:**  
 Hardy Roses  
**Types:**  
 catalog

14 CATALOGUE OF COTTAGE ROSE GARDEN.

\*GERANIUMS.\*

**G**ERANIUMS, in all their different species and varieties, owing to their great and varied usefulness, may now be considered the most popular of plants, adapting themselves to all soils and climates. They are equally useful as house-plants, as bedding plants in the garden, planted in the border with other plants, or massed in beds by themselves, where the most gorgeous effects may be produced.

Perhaps no other class has been so much improved in the late years as the Double Flowering Geraniums, and still such success adds more with novelty. In the way of new shades and large sized flowers, until we now have all shades of single geraniums represented among the double flowering.

For consistency of bloom the Geraniums, as mentioned, small plants, put out in May and June, will completely fill the bed three weeks after planting, and will be a source of flowers, and continue getting better until blackened by the frost of autumn. While other plants are withering under the scorching rays of our summer sun, the Geraniums seem to glory in the hottest weather.

It also makes an excellent Winter-flowering plant, if not kept too warm; but for this purpose should be grown in pots all summer, and the buds picked off as they appear, as plants grown from cuttings in September, before I offer a very choice collection, and I would like all my customers to try a few of these lately so much improved kinds, being assured they will be pleased with them.

**DOUBLE GERANIUMS.**

Price, 10 cents each, by mail, except where noted. Larger plants by express, 15 cents each. \$1.50 per dozen.

**Apple Blossom.** Light pink, rose tint, a lovely shade.

**Asa Gray.** Salmon-pink, edge white, very fine bloomer.

**Annie House.** Deep crimson, purple shaded flowers, large truss, very fine.

**Balsam.** Flowers large, purple, shaded with scarlet.

**Belle de Neige.** Beautiful double flowers of a pure snowy whiteness, dwarf habit, and a very fine bloomer, 20 cts.

**Bishop Wood.** The upper petals carmine scarlet, lower petals white.

**Candidissima.** Flowers large, full, finely formed, snow white, not tinted with rose. As the flowers get fully expanded it is indeed a true double white, dwarf habit, fine bloomer.

**Casimir Porter.** Flowers full, brilliant orange, edge salmon.

**Comte Ranpon.** Immense trusses of very double flowers, of great form, color deep red.

**Conrad Kirchner.** Scarlet, white center.

**Cheerfulness.** Flesh pink, shaded and mottled rose, extremely double, petals somewhat divided or fringed, a fine and distinct variety, 20 cts.

**Depute Amelton.** Trusses large, deep rose, with a violet eye.

**Depute Ladies.** Dark vermilion purple.

**Depute Vice.** Trusses large, dark red.

**Depute Vario.** Bright lake, deep at edges of petals.

**Dr. Jacoby.** Flowers large, clear unbroken salmon.

**Drigo Paddy.** Carmine rose.

**Edwade.** Crimson flowers, foliage bright green, with yellowish green disk.

**E. F. Rensard.** Rich purple color, beautiful.

**Ernest Lamb.** Vigorous, robust compact, deep crimson, tinted with scarlet, 15 cts.

**Edmund About.** Clear, rosy-red color, pale toward the edge.

**Emile de Girardin.** A splendid variety, with enormous trusses of a beautiful rose color.

**Garbetta.** Immense trusses of very large flowers of a deep, velvet red color, very fine.

**Gilt.** Brilliant orange scarlet.

**Queen Margit.** Brilliant crimson-scarlet, shaded with violet. A very fine bloomer.

**General de Giffre.** Bright orange, base of petals rose. A beautiful flower, 20 cts.

**Hani.** Kirks. Deep, purple crimson flowers, short pedicel.

**Henry Cannet.** The richest, most vivid and deepest scarlet, flowers of great size, and perfect form, always in bloom. In glowing, velvet-color can not be equalled, and it will last as well as the single 15 cts.

**Frederic.** Intense deep scarlet, flowers very large and double, trusses of good size.

**Jean Dallas.** Flowers moderately full, brilliant purplish-violet, 15 cts.

**J. P. Kirland.** Flowers very large, rich deep crimson, shaded with purple.

**J. H. Varrone.** Rich, bright crimson; very pure and pleasant color, 20 cts.

**J. P. Stah.** Deep, soft rose, edged with salmon; very pure and pleasant color, 20 cts.

**John Simon.** Light rosy pink.

**J. M. Kippart.** Flowers double of a dazzling brilliant color, shaded throughout at base of petals, trusses very large, a very fine bloomer.

**La Niagara.** Flowers large, well formed and of a pure white color, 20 cts.

**La Cascade.** Trusses large, color delicate whitish-rose.

**Louis Garbano.** Bright rosy pink, with a white eye, large trusses of well developed flowers.

**Le Flore.** Glowing crimson scarlet, very brilliant, handsomely formed flowers, beautiful in its rich coloring.

**Majestic.** Rich carmine rose, shaded with orange. A remarkably beautiful flower.

**Mad. A. Weick.** Nearly white, a fine bloomer, oval with a delicate lavender shade, trusses of great size.

**Mrs. John Therps.** Crimson-scarlet, in good trusses, 15 cts.

**Mad. Tolback.** Rich rose color, tinted with violet-crimson.

**M. D. Debard.** Rich, orange-vermillion, very brilliant, flowers large trusses.

**Mad. Neery.** Flowers large, rose-carmine.

**M. Washington.** Bright rose.

**Monseigneur Buchler.** Bright mahogany color, novel.

**Monseigneur Dibos.** Porcelain white, glossy rose center, 15 cts.

**Mad. Annetta Baiter.** Dwarf habit, and remarkably free, shade, pure white, in good trusses.

**Mrs. Charles Fosse.** Deep pink, the upper petals marked with white, the front of its color.

**Monseigneur Ostein Lowagie.** Immensely bright scarlet, toned with salmon.

**Mrs. Hayes.** Splendid, pure pink.

**Mad. A. Weick.** Nearly white, a fine bloomer.

**Nymphs.** White, slightly tinged with rose.

**Nellie Lewis.** Bright rosy crimson, shaded purple, a great bloomer.

**Nismit.** Very dark red, changing to rich crimson, magnificently colored, 15 cts.

**Prizecup Humbuck.** Very bright, soft rose color, most charming shade, a beautiful flower.

**President James A. Garfield.** Large scarlet flowers with large white eye. A strong grower and a fine bloomer.

15 CATALOGUE OF COTTAGE ROSE GARDEN.

\*SINGLE ZONALE AND NOSEGAY GERANIUMS.

Price, 10 cents each, except where noted. Larger plants by express, 15 cents. \$1.50 per dozen. Twelve choice varieties by selection, for \$1.00.

**Acme.** Rich salmon, shaded with scarlet.

**A. Rodgers.** Purple, large truss.

**Alexis Lorraine.** Flowers clear orange, bordered with salmon, white in the center.

**Amstel.** Rich crimson crimson.

**Audinet-Paquette.** Carmine lake, slightly veined rose.

**Amelton.** Light scarlet, blue shaded flowers, very fine.

**Barford's Glory.** Clear scarlet, carnation, white.

**Beauty of Kingsseing.** White, salmon center.

**Black Diamond.** Rich dark crimson.

**Bonheur.** Rose color, large flower and truss.

**Blossom.** Flowers of deep crimson scarlet, of fine shape, small white eye.

**Champion Lancer.** Large truss, color bright, rich crimson, very fine.

**Cyprien.** Pure white.

**Charles Dickson.** Rose crimson.

**Christine Hillman.** Bright rosy pink, large truss.

**Col. Holden.** Rose crimson.

**Dapper.** Pure scarlet, large white center.

**Darwin.** Glowing bright Fuchsia-red, upper petals berry red.

**Halleika.** White, with delicate pink eye.

**Dr. Kirk.** Purplish-crimson white eye.

**Dr. Merrit.** Orange scarlet, large truss.

**Dr. Rowland.** Light crimson, fine foliage.

**Dr. John Denay.** The nearest approach to a blue double yet raised, color a rich purplish magenta, often having a distinctly bluish cast. At the base of the two upper petals is a touch of rich orange water, contrasting boldly with the balance of the flower, 20 cts.

**Depute Durvas.** Very rich velvet purple crimson, beautiful.

**Erasmus Chastain.** Large trusses of brilliant crimson purple flowers.

**Father Hyacinth.** Bright pink, free bloomer, dwarf habit.

**Jan. Grant.** Bright scarlet, large truss.

**Mad. Herivelan.** Scarlet, dense growth, an abundant bloomer.

**Henri de Carberry.** Brilliant salmon.

**Henry Ring.** Long scarlet, white eye.

**Heterantha.** Bright orange scarlet, shell-shaped flowers of great substance.

**Hilaster Citizen.** Dark orange red, center like a rose, 15 cts.

**Jack Ripley.** Richest shade of deep scarlet, flower and truss very large.

**Janney.** One of the most distinct zonal geraniums in regard to color, which is an orange-scarlet, so much so as to be a distinctly yellow tinge.

**John H. Farnum.** Salmon pink, large truss, excellent bloomer.

**Louis Lewis.** Large rose flower, perfectly round and of good substance, rich crimson shading toward the center, small white eye, fine bloomer, 20 cts.

**Louis Vanille.** Dark blood red.

**Loretta.** White, variegated truss.

**La Louisa.** Brilliant carmine with white eye.

**Madame Duxson.** Bright pink, spotted white.

**Richard Loris.** Vermilion orange, white stripes.

**Rose d'Amour.** Flowers of a fine rose color, A very fine 15 cts.

**Robert Baiter.** Scarlet, large truss, extra double, good habit.

**Simon Delane.** Rich violet purple.

**Emmanuel de Castille.** Amaranth-red, tinted with violet.

**The Rhoda.** Deeply shaded, orange, base of petals white.

**Vanban.** Brilliant rosy-red crimson, shaded with salmon and white.

**William Hamilton.** Rich deep crimson, with white eye.

**W. E. Harris.** Rich, pale red center, fine shaped, 20 cts.

**Madame Vanisher.** White.

**Madame Ed. Quiser.** Pure white.

**Madame Rezanier.** Large, round flowers of perfect shape, deep, rich crimson, large truss.

**Marginate.** Pure white, each petal margined with pink.

**Martha.** Rose cherry, with violet crimson shading.

**Master Christina.** Fine pink.

**Martinez.** Vivid scarlet, with pure white eye, truss compact.

**Mrs. Gordon.** White, pink center.

**Mary Hallack Foster.** Immense trusses of bright pure salmon, very large, and of the finest shape, with a pure white eye, 20 cts.

**Maples.** Flowers, deep, pure scarlet, of fine shape and substance.

**Mrs. J. A. Garfield.** A new Geranium, with pure white flowers, dwarf, and one of the best sorts for pot culture, 15 cents.

**Mrs. Moore.** New, pure white, with a beautiful ring of bright salmon around a small white eye, very fine, 20 cts.

**Mrs. Jas. Vink.** Dark salmon, pinkish center.

**M. Arlesmout.** Dark salmon pink.

**Master Harry.** Light rosy crimson, fine flower.

**Newton's Mary.** A fine rich pink, large flower and good truss, 15 cts.

**Oliver.** Salmon, tinted with violet and edged with scarlet.

**Orange Boyan.** Bright orange, each distinctly margined with white.

**Palis.** Frontmost truss of rose pink.

**Perseus.** Light pink, beautifully shaded with salmon, very large.

**Pretty Susan.** Salmon pink, white eye.

**Purisy.** White, in the style of Madame Vanisher.

**Queen of the West.** Bright orange scarlet, large truss and profuse bloomer, one of the best.

**Rensamer.** Clear apricot, passing to coppery rose, velvet center, large truss, 20 cts.

**Riansa.** Rich scarlet, fine form.

**Review.** Ground color salmon, distinctly margined and mottled with white, of the finest shape, truss large and of good shape, 20 cts.

**Ruby.** Dark amaranth purple, a very fine bloomer, 15 cts.

**Rev. Mr. Atkinson.** Dark crimson truss of immense size.

**Samuel Jackson Jr.** One of the newest type, flowers scarlet, very large and free.

**Sauve d'Etienne.** Pure white, without tint.

**Spiffers.** Bright scarlet, thickly marked foliage, dwarf habit.

**Break of Luck.** Salmon color, occasionally striped with white.

**Teresa.** Deep rich crimson, dwarf.

**Virgin.** Pure white, free bloomer, dwarf habit.

**Wills de Nancy.** New, delicate, rose salmon.

**W. E. Harris.** Rich, pale red center, fine round flowers, 20 cts.

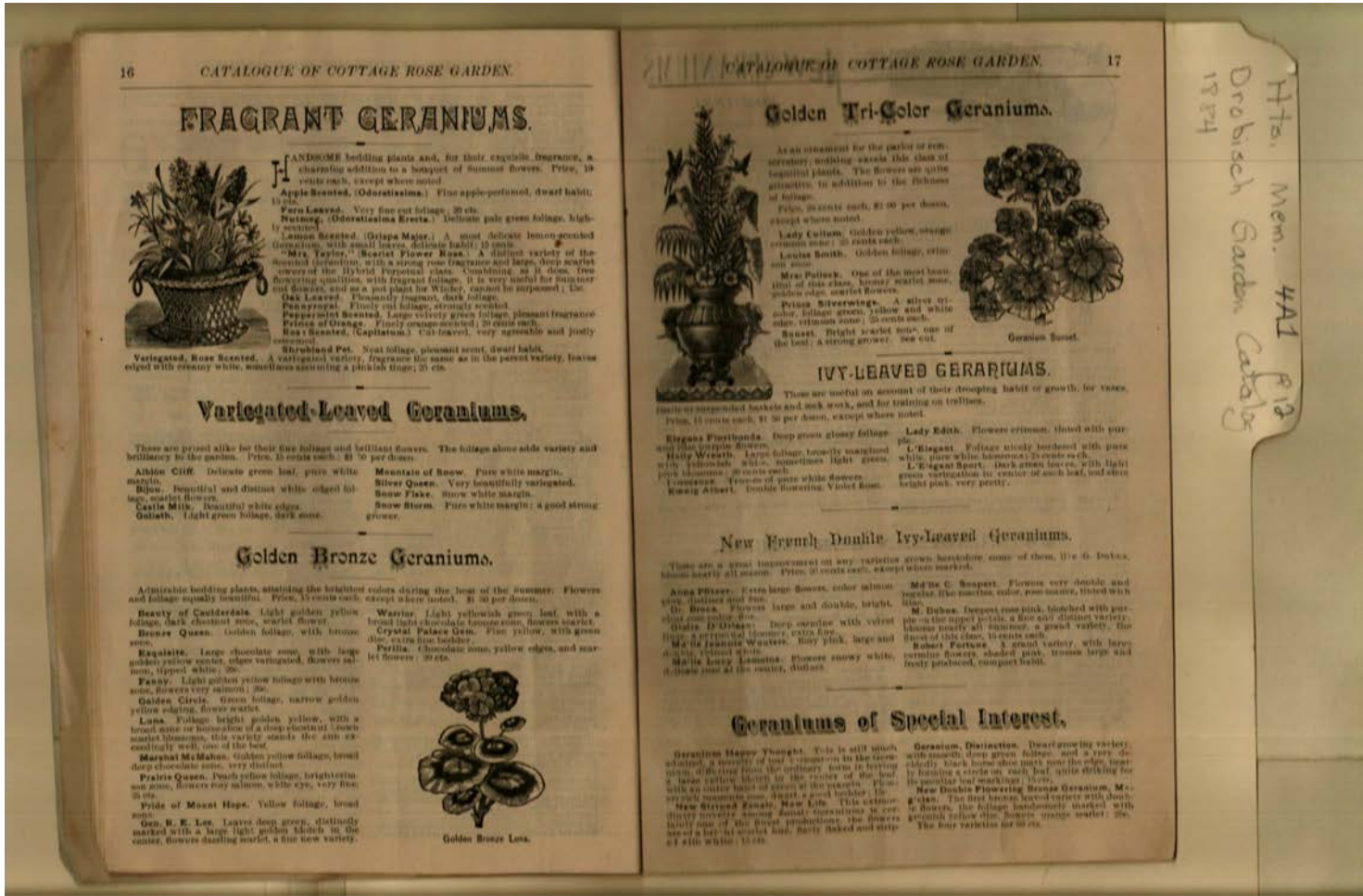
**White Clippa.** Pure white, dark zone.

**White Perfection.** Pure white, profuse bloomer, without an equal for winter.

H. H. Mem. 441 P. 18  
 Drobisch Garden Catalog  
 1884

Names:  
 Geraniums  
 Types:  
 catalog





**Names:**  
 Fragrant Geraniums  
**Types:**  
 catalog

**FRAGRANT GERANIUMS.**



**ANDROME** bedding plants and, for their exquisite fragrance, a charming addition to a bouquet of summer flowers. Price, 10 cents each, except where noted.  
**Apple Scented**, (Odoratissima.) Fine apple-perfumed, dwarf habit, 10 cts.  
**Pure Leaves**, Very fine cut foliage, 20 cts.  
**Painting**, (Odoratissima Erecta.) Delicate pale green foliage, highly scented.  
**Lemon Scented**, (Griapa Major.) A most delicate lemon-scented Geranium, with small leaves, delicate habit, 10 cents.  
**"Mrs. Taylor," "Beaut Flower Rose"**, A distinct variety of the beautiful Caroline, with a strong rose fragrance and large, deep scarlet flowers, and as a pot plant for winter, cannot be surpassed; the **Oak Leaves**, Pleasantly fragrant, dark foliage.  
**Two apricot**, Finely cut foliage, strongly scented.  
**Peppermint Scented**, Large velvety green foliage, pleasant fragrance.  
**Prince of Orange**, Finely serrated-veined, 10 cents each.  
**Rose Scented**, (Capitatum.) Cut-leaved, very agreeable and justly scented.  
**Strawfield Pat**, Sweet foliage, pleasant scent, dwarf habit.

**Variegated, Rose Scented**, A variegated variety, fragrance the same as in the parent variety, leaves edged with creamy white, sometimes assuming a pinkish tinge; 20 cts.

**Variegated-Leaved Geraniums.**

These are prized alike for their fine foliage and brilliant flowers. The foliage alone adds variety and brilliancy to the garden. Price, 10 cents each, \$1 75 per dozen.

- Albino Cliff**, Delicate green leaf, pure white margin.
- Bijou**, Beautiful and distinct white edged foliage, scarlet flowers.
- Castle Milk**, Beautiful white edges.
- Goliath**, Light green foliage, dark zone.
- Mountain of Snow**, Pure white margin.
- Silver Queen**, Very beautifully variegated.
- Snow Flake**, Snow white margin.
- Snow Storm**, Pure white margin; a good strong grower.

**Golden Bronze Geraniums.**

A admirable bedding plants, attaining the brightest colors during the heat of the summer. Flowers and foliage equally beautiful. Price, 10 cents each, except where noted. \$1 50 per dozen.

- Beauty of Caulderdale**, Light golden yellow foliage, dark chestnut zone, scarlet flowers.
- Bronze Queen**, Golden foliage, with bronze zone.
- Esquiline**, Large chocolate zone with large golden yellow center, edges variegated. Flowers semi-double, tipped white; 20c.
- Fanny**, Light golden yellow foliage with bronze zone, flowers very salmon; 20c.
- Golden Circle**, Green foliage, narrow golden yellow-edged, flower scarlet.
- Luna**, Foliage bright golden yellow, with a broad zone or border of a deep chestnut brown scarlet bloomers, this variety stands the sun exceedingly well, one of the best.
- Marshal Mc Mahan**, Golden yellow foliage, broad deep chocolate zone, very distinct.
- Prairie Queen**, Deep yellow foliage, bright crimson zone, flowers ray salmon, white eye, very fine; 20 cts.
- Pride of Mount Hope**, Yellow foliage, broad zone.
- Gen. H. K. Lee**, Leaves deep green, distinctly marked with a large light golden bluish in the center, flowers double, scarlet, a fine new variety.
- Warrior**, Light yellowish green leaf with a broad light chocolate bronze zone, flowers scarlet.
- Crystal Palace Green**, Fine yellow, with green disc, extra fine border.
- Parilla**, Chocolate zone, yellow edges, and scarlet flowers; 20 cts.



Golden Bronze Leaf.

**Golden Tri-Color Geraniums.**

As an ornament for the parlor or conservatory, nothing excels this class of beautiful plants. The flowers are quite attractive, in addition to the richness of foliage.

Price, 10 cents each, \$1 00 per dozen, except where noted.

**Lady Calumet**, Golden yellow, orange crimson zone; 10 cents each.

**Louise Smith**, Golden foliage, crimson zone.

**Mrs. Pollock**, One of the most beautiful of this class, bronze scarlet zone, yellow edge, scarlet flowers.

**Prince Silverwing**, A silver tri-color, foliage green, yellow and white also, crimson zone; 10 cents each.

**Sacred**, Bright scarlet zone, one of the best, a strong grower. See cut.



Geranium Sacred.

**IVY-LEAVED GERANIUMS.**

These are useful on account of their drooping habit of growth, for vases, hallways, suspended baskets and rock work, and for training on trellises. Price, 10 cents each, \$1 50 per dozen, except where noted.

- Elegant Fivebunda**, Deep green glossy foliage and blue purple flowers.
- Holly Weirath**, Large foliage, broadly margined with yellowish white, sometimes light green, pink blossoms; 10 cents each.
- Lorraine**, Fringe of pure white flowers.
- König Albert**, Double flowering, Violet Rose.

- Lady Edith**, Flowers crimson, tinted with purple.
- Elegant**, Foliage silvery margined with pure white, pure white blossoms; 10 cents each.
- L'Eclair Sport**, Dark green leaves, with light green variegation in center of each leaf, and also bright pink, very pretty.

**New French Double Ivy-Leaved Geraniums.**

These are a great improvement on any varieties grown heretofore, some of them, like G. Dubou, bloom nearly all seasons. Price, 10 cents each, except where marked.

- Anna Blücher**, Extra large flowers, color salmon pink, double and fine.
- D. Brock**, Flowers large and double, bright colored rose color, 20c.
- Gladiolus D. Dillan**, Deep carmine with velvet fringe of purple blossoms, extra fine.
- M. de Jeanne Wouters**, Rosy pink, large and double, velvet white.
- M. de Long Lemmon**, Flowers creamy white, double zone at the center, distinct.
- M. de C. Sheperd**, Flowers very double and regular, like marbles, color, rose-mauve, tinted with blue.
- M. Dubou**, Deep rose pink, tinged with purple in the tipped petals, a fine and distinct variety, bloom nearly all summer, a grand variety, the finest of this class, 10 cents each.
- Robert Fortune**, A grand variety, with large carmine flowers, shaded pink, trusses large and freely produced, compact habit.

**Geraniums of Special Interest.**

- Geranium Heavy Thought**, This is still much admired, a variety of leaf-vein pattern in the venation differing from the ordinary form in having with an entire base of green at the center. Flowers rich, somewhat rose, large and good border.
- New Striped Female, New Life**, This extraordinary among double geraniums is certainly one of the most productions; the flowers are of a brilliant scarlet hue, fully backed and striped with white; 15 cts.
- Geranium Distinction**, Dwarf growing variety, with smooth, deep green foliage, and a very distinctly black zone about near the edge, nearly forming a circle on each leaf, quite striking for its peculiar leaf-workings; 10 cts.
- New Double Flowering Bronze Geranium, M. de G. de G.**, The first bronze leaved variety with double flowers, the foliage handsomely marked with greenish yellow this flowers orange scarlet; 20c. The four varieties for 60c.

Hts. Mem. 441 p. 18  
 Drobisch Garden Catalog  
 1884



## NEW GERANIUMS FOR 1884.

BELOW we offer the latest introductions of American and foreign origin, which each include some very novel and rare shades, and will be found a very valuable addition to those that we already possess. Young plants will be ready in March. Price, 25 cents each.

### NEW DOUBLE AMERICAN VARIETIES.

**H. M. Bliss.** Of all varieties this has the largest flowers and most vivid coloring; the individual flowers are two inches in diameter, of good shape, trusses large, color a rich tone of pure scarlet.  
**Prudential.** Rich deep crimson-scarlet, large individual flowers and trusses, one of the very best for bedding.  
**George Thayer.** As a bedding geranium we have not seen its equal, the trusses are of immense size, on very strong foot stalks; the color is of the most intense light crimson; the habit is bushy and the foliage ever lush, a grand variety.  
**Glided Gold.** An entirely new color, being of a rich deep golden-orange, the flowers are of medium size, the trusses compact and free produced, and one of the most distinct breaks of color ever made in the geranium; in fact, it is the finger post to the yellow variegated leaf variety.  
**Half Beach.** Rich somewhat purple, of fine habit and robust constitution, the foliage wearing well in the hottest weather; the flowers are of good size; the trusses large and freely produced; a good variety for bedding.  
**Jessie Hamilton.** A very distinct variety, opening flesh pink, maturing into a rich carmine-red, the trusses are of good size, the habit very dwarf and free; one of the best for market purposes, flowering very early in spring.  
**John Heron.** Rich plum purple flowers and trusses large, habit compact and spreading; a fine border and quite an acquisition.  
**Miss McMurtry.** An immense flower of fine shape; color a rich warm salmon, with lighter margin; large bold trusses of a sturdy habit; distinct and fine.  
**Miss Cope.** Rich carmine red, of large size and immense trusses; the habit is all that can be desired and a really fine border.  
**Phlox.** A rich apricot-orange, most vivid in coloring; trusses very large; habit neat and free; a fine and distinct bedding variety.  
**Queen of the Parties.** A bi-color variety of the most perfect shape, rich flesh color, mottled with pearly white; this has the largest and most perfectly shaped trusses of any variety we have ever seen; grand.  
**Sunlight.** A most intensely fiery salmon color, shaded orange, of very free growth, with large and bold trusses; a valuable and distinct bedding variety.

### NEW EUROPEAN GERANIUMS.

The greater portion of these new geraniums have been raised by Lemaitre (in whom we owe the first double variety and a majority of the best double since obtained) Cross, Houchard, and a few other French hybridizers. We are with reasonable limits in the statement that three-fourths of the good geraniums grown to-day were raised by these parties. Of late their attention has been particularly directed to the production of the darker-colored flowers, and some of these are wonderful in their depth of color and superb markings.

**DOUBLE VARIETIES.**  
**Admiral Seymour.** Rich dark amaranth, an improvement on C. Davis.  
**Aureole.** Flowers light flesh salmon, a very free bloomer.  
**Cabanis.** Rich carmine red, shaded vermilion.  
**Flambeau.** Intensely bright scarlet, large trusses, a good border.  
**Jules Cleverly.** Rich violet-red, finely shaped flowers, distinct.  
**Lakeland.** Amaranth, shaded orange and crimson, very distinct.  
**M. Orléans.** Rich pink, large trusses, fine border.

**SINGLE VARIETIES.**  
**Eurydice.** Richest rose-pink, with large white blotches on upper petals.  
**Ferdinand Kauffer.** This is undoubtedly the best of all the Dr. Henry type, larger flowers and trusses, color more intense, with good foliage, fine.  
**Lakeland.** Amaranth, shaded orange and crimson, very distinct.  
**Nelly Thomas.** Richest deep crimson, with immense flowers, a valuable acquisition.  
 Price 25 cents each, of all the above.

### NEW DWARF GERANIUM.

**Mad. Ballerol, Silver Variegated.** A very novel variety of silver geranium, very fine for massing or bedding, a very dwarf grower, rarely reaching a height of more than six inches, leaves very small, a peculiar green, edged with pure white spots.

## EUROPEAN NOVELTIES OF 1883.

Price, 25 cents each.

**SINGLE.**  
**Antonia Prinet.** Full-plumed truss, of richest crimson color, upper petals marked with purple.  
**Bertha.** Violet coloration shade marked at the base of the upper petals with yellow and green.  
**Col. Marvin.** Beautifully colored, upper petals marked with orange red, center deep light red, very large pure white eye.  
**Constitutional Distinct.** The large petals marked with intense crimson.  
**James Leubart.** Fine rich scarlet, upper petals marked with crimson lines.  
**La Fayette Basset.** A very peculiar flower, center pure white, outer half of petals light red, the foliage interestingly beautiful.  
**Louis Henschel.** Foliage of crimson-red.  
**Misses Variety.** Bright vermilion shaded and marked with red.  
**President Barfield.** Folds of late and carmine blue.  
**Sarah Bernhard.** Flowers pure white, without green shaded trusses, of orange shade, and large in excellent trusses.  
**Thomas Carlyle.** Orange and salmon, very large, in immense trusses, the center of a clear vermilion.

**DOUBLE.**  
**Bartholomew St. Vitare.** Creamy white, overlaid with salmon and slightly edged with rose.  
**Charles Darwin.** Rich, deep violet purple, marked with a peculiar flowing color, a vigorous bloomer.  
**Col. Wilkes.** Superior shade, the lower petals marked with flame, the upper ones blending into crimson red.  
**Emilie de Helge.** Pure white.  
**Gen. Elliot.** Like United with flame.  
**L. Graegerie.** Large perfect flower, of pure orange, very bright and attractive.  
**Paul St. Victor.** Rose-carmine.



### COLEUS—GENERAL COLLECTION.

Price, 10 cents each; \$1 00 per dozen.

**Acoma.** Foliage large, ground color deep chocolate and creamy white, beautifully veined and striped.  
**Bassano.** Purple, with bright crimson midrib.  
**Bina.** Crimson shaded with chocolate.  
**Buttercup.** Bright green, mottled with yellow.  
**Burning Bush.** Deep crimson, green and gold.  
**Chamisso.** Purple, rose, green and white.  
**Cloth of Gold.** Golden yellow.  
**Cranium.** Brilliant crimson, center shaded deep crimson, green edging.  
**Daphnemia.** Light green, golden center.  
**Queenstem.** Rich crimson, golden edge.  
**Gray of Astoria.** Deep crimson.  
**Herald of Spring.** Salmon, golden edge.  
**Light Green and Yellow.** With honey red.  
**Hambleton.** Yellow, flamed with crimson.  
**James Leubart.** Deep crimson center, golden yellow green edge.  
**Jessie Lightfoot.** Deep maroon, crimson center.  
**John Haron.** Dark purple, brilliant crimson markings.  
**Kentish Fire.** Vermilion and crimson.  
**Lord Falmouth.** Crimson, yellow, orange and green.  
**Marcellus.** Brilliant crimson, mottled with yellow and intense brown.  
**Maya.** Leaves fringed and toothed, green with dark margin.  
**Miss Nellie Kirkpatrick.** White center, shaded with yellow, green margin.  
**Mrs. Benjamin.** Yellow, center light rose.  
**Mrs. Wm. Barr.** Central rose rose, margined green and brown.  
**Midnight.** Very dark purple, fringed and lobed sides.  
**Mrs. Fries.** Foliage bright green-yellow with dark brown spot.  
**Nero.** Crimson and purple, bright green edge.  
**Nonpareil.** Bright light crimson, with golden netting.  
**Novelty.** Crimson and purple mottled.  
**Old Gold.** Crimson and gold, green edge.  
**Orion.** Yellow and green, mottled with carmine, crimson and chocolate.  
**Piano.** Brilliant shade of deep crimson, lighter veins, golden base, very attractive.  
**Prince of Prussia.** Bright variety crimson, narrow golden edge, one of the best.  
**Quadrilateral.** Various mottled with honey red, red, dark chocolate and green.  
**Queen Victoria.** Light honey crimson, bright golden edge, crimson leaves.  
**Red Cloud.** Rich crimson, green margin.  
**Royal Purple.** Light green leaves, center pink and yellow.  
**S. King.** Deep purple, rose-colored center.  
**Seraph.** Fiery crimson, spotted chocolate.  
**Spotted Gem.** Yellow ground, irregularly blotched crimson, green and orange.  
**Starlight.** Splashed carmine and crimson.  
**Supremacy.** Blackish maroon, with brilliant broad strip a band through the center.  
**The Negro.** Very dark purple, nearly black.  
**The Turk.** Rich violet crimson, the upper half golden yellow.  
**Verschoffity.** Deep crimson, green and bronze foliage, one of the very best for general bedding purposes.  
**Unique.** Light green, gold and crimson center.  
**Valvet Mantle.** Brilliant crimson, shaded maroon.  
**Virtuous.** Deep green, dashed and spotted purple.

Hts. Mem. 4A1 P12  
 Drobisch Garden Catalog  
 1884

Names:  
 Coleus  
 Types:  
 catalog

20 CATALOGUE OF COTTAGE ROSE GARDEN.

### Coleus--New Varieties of 1883.

The following set comprises some most beautifully colored and variegated varieties, perhaps as handsome as ever have been offered, and it seems difficult to improve on them. 15 cts. each, \$1.50 per dozen.

**Beauty.** Entirely distinct ground color crimson, with deeply serrated markings of crimson; white habit very dwarf, a grand borderer and invaluable for second or third lines in carpet designs or geometrical figures.

**Blackbird.** Leaves and stems jet black, the whole plant growing very compactly, the best of all really dark varieties for bedding.

**Burnshaw.** Deep yellow and crimson, striped and mottled with bright crimson, a very attractive variety.

**Diary.** Rich purplish crimson center, edged with golden yellow, bright green border, the whole suffused with dark crimson veins.

**Climax.** Dazzling crimson center, bright green ground, edged marked with bright crimson; a splendid variety.

**Dazzler.** Center of leaf flamed crimson, shading off to brilliant maroon, bordered with lively green.

**Fairy Knoll.** Maroon, with deep wine-red markings.

**Golden Nugget.** Bright golden yellow ground, bordered with lively green, very distinct. This also has proved to be a fine borderer, it stands out and sun without bleaching.

**Golden Border.** Bright golden yellow, with small green spot in center, changing to yellow in the sun.

**Orchidea.** Brilliant crimson center, edged with golden yellow, narrow green border.

**Queen.** Center crimson, bordered maroon, edged green.

**Grass Harford.** Brilliant crimson center, surrounded by deep maroon and bright green edging, very showy.

**Garfield.** Maroon crimson, mottled white and green.

**Golden Border.** This has proved to be the best of all yellow varieties for bedding. It occupies Joseph's Coat. A distinct variety, mottled violet and purple in a green ground.

**Kirk Alloway.** Rich carmine, maroon and purple tints.

**Micawber.** White stems and red ribs, carmine and maroon markings, on broadly margined green leaves.

**Mrs. Humphreys.** Mottled pink, yellow and maroon, green margins.

**Mrs. Giddes.** Magnificent large leaves, maroon ground, mottled with carmine and white, fine.

**Mr. Walker.** Creamy white center with net-work of black extending over entire surface, maroon ground.

**Progress.** Ground color green and yellow, very peculiarly splashed with pink and crimson, very distinct.

**Queen of the Lawn.** A bright colored variety, crimson, black and green.

**Rocket.** Purple, shaded maroon, with deeply toothed margins.

**Ruby.** Carmine center, maroon border, deeply toothed margins, yellow and green.

**Sara.** Very large purple leaves, with violet markings, velvet habit.

**Progress.** Ground color green and yellow, very peculiarly splashed with pink and crimson, very distinct.

**Queen of the Lawn.** A bright colored variety, crimson, black and green.

**Rocket.** Purple, shaded maroon, with deeply toothed margins.

**Ruby.** Carmine center, maroon border, deeply toothed margins, yellow and green.

**Sara.** Very large purple leaves, with violet markings, velvet habit.

**Queen of the Lawn.** A bright colored variety, crimson, black and green.

**Rocket.** Purple, shaded maroon, with deeply toothed margins.

**Ruby.** Carmine center, maroon border, deeply toothed margins, yellow and green.

**Sara.** Very large purple leaves, with violet markings, velvet habit.

21 CATALOGUE OF COTTAGE ROSE GARDEN.

### FUCHSIAS



The Fuchsia or Ladies' Ear Drop is among the finest and most popular plants grown; graceful in habit, beautiful in flower, and of easy culture. Some of the varieties are very large and present a striking contrast in colors. Price, 10 cents each, \$1.00 per dozen, except where noted.

**Academical.** Crimson tube and sepals tinged purple, corolla, foliage finely variegated green and white.

**Arabella.** White tube and sepals, corolla rose, the best light colored variety.

**Arcata Supra.** Tube and sepals salmon, corolla bright orange.

**Avalanche.** Sepals bright carmine, dark corolla, very double and fine.

**Anna Bishop.** Deep crimson corolla, large flower.

**Belle Brantford.** Deep, red sepals, purplish crimson corolla, large flower.

**Black Pillar.** Large expanded corolla of a reddish color, habit of growth extra fine and one of the most prominent specimens available that we have.

**Carl Hall.** White sepals, rose colored corolla, striped with white, fine.

**Champion of the World.** Crimson tube and sepals, very large purple corolla, 25 cts.

**Colored Garden.** White, tube and sepals white, almost large corolla.

**Crimson.** Bright crimson sepals, dark corolla.

**Emerald.** Five single purple.

**Excelsior.** Corolla violet purple, shaded with blue, 15 cts.

**Deutscher Kaiser.** Red tube and sepals, purplish crimson corolla, very fine and double, 10c.

**Empire Builder.** Corolla large and very double, violet, intense purple bright red, 15 cts.

**Empress Mary.** Pink corolla with carmine shaded, a beautiful one, 15 cts.

**Kim Lily.** Sepals rich crimson, corolla purple, standard double.

**Rushmore.** Crimson tube and sepals, double, white corolla, extra fine, 25 cents each.

**Resistant.** Crimson sepals, purple corolla, fine specimen, 15 cts.

**Sari of Beaumont.** The bloom three inches in length and of great substance, the tube and corolla set of a light rose carmine, corolla deep crimson, 15 cts.

**Queen Mary.** Waxy red sepals corolla double purple, shaded with crimson.

**Harriet.** Flowers large, single, tube and sepals light red, corolla lavender tube.

**Rose.** Fragrant, tube and sepals pure white, tube large, very pink corolla, one of the most distinct light fuchsias.

**Harriet Home.** Crimson tube and sepals, rose purple corolla.

**Jacqueline.** White tube and sepals, rose purple corolla.

**Joseph Ruston.** Double, very large, scarlet tube and sepals, corolla violet blue, shaded deep scarlet, 30 cts.

**John Voss.** Fine double flower, after the style of a standard, 15 cts.

**Julia Monge.** New, lovely sky blue double corolla marked with scarlet, 25 cts.

**Lady Haythorpe.** White tube and sepals purple corolla.

**La Niaga.** Double white corolla, crimson tube and sepals.

**Lord Byron.** Waxy crimson sepals, very dark purple corolla, distinct and dwarf, 25 cts.

**Lottie.** Tube and sepals pure white, vivid crimson corolla, good habit and a free bloomer.

**Mad. Carl Brückner.** Tube and sepals crimson, double white corolla tinged with purple.

**Melior.** Scarlet tube and sepals, light purple corolla, foliage crimson, orange and green, 15 cts.

**Mistal.** Tube and sepals red, double violet corolla.

**Monarch.** Red tube and sepals, pink corolla extra large and fine, 25 cents each.

**Monstrous.** Crimson sepals, double white corolla.

**Mad. Van Der Straen.** Fine, large and elegantly formed, sepals long and well reflected, pure red, corolla large, double, white extra fine, 25 cts.

**Muskat.** Corolla perfect double white, with bright carmine red sepals, the earliest and finest flowering, 25 cts.

**May Queen.** Beautiful violet rose corolla, sepals pure white, extra, 25 cts.

**Polymania.** Corolla golden orange, very free flowering, 25 cts.

**Prince Arthur.** Reddish purple corolla.

**Passal.** Light red and very purple, 25 cts.

**Ranger.** Violet blue corolla, variegation sepals, double.

**Rose of Cassia.** Sepals and tube bluish, corolla large rose purple, extra fine.

**Rose of Denmark.** Tube and sepals ivory white, corolla rose pink, 15 cts.

**Rose Perfection.** A single variety with rich deep rose red tube and sepals, and dark violet corolla.

**Syringifolia.** Large frays of flowers, resembling in shape a bunch of lilac, color rose lilac, winter bloomer, pure.

**Snow White.** Scarlet tube and sepals, double white corolla.

**Sony de Chiswick.** Rose crimson sepals, corolla rich violet, extra.

**Speciosa.** A winter blooming variety of large size, tube and sepals bluish, corolla bright crimson, standard.

**Standard.** White tube and sepals, crimson corolla.

**Striped Banner.** Crimson tube and sepals, purple corolla, striped with crimson.

**Tower of London.** Sepals broad scarlet, rich violet corolla, large and double.

**Try Me On.** Corolla very dark, sepals red, tube violet.

**Venus Coronata.** Scarlet sepals, double white corolla, striped with crimson.

**Walter Queen.** Sepals, scarlet, well variegated, corolla deep purple.

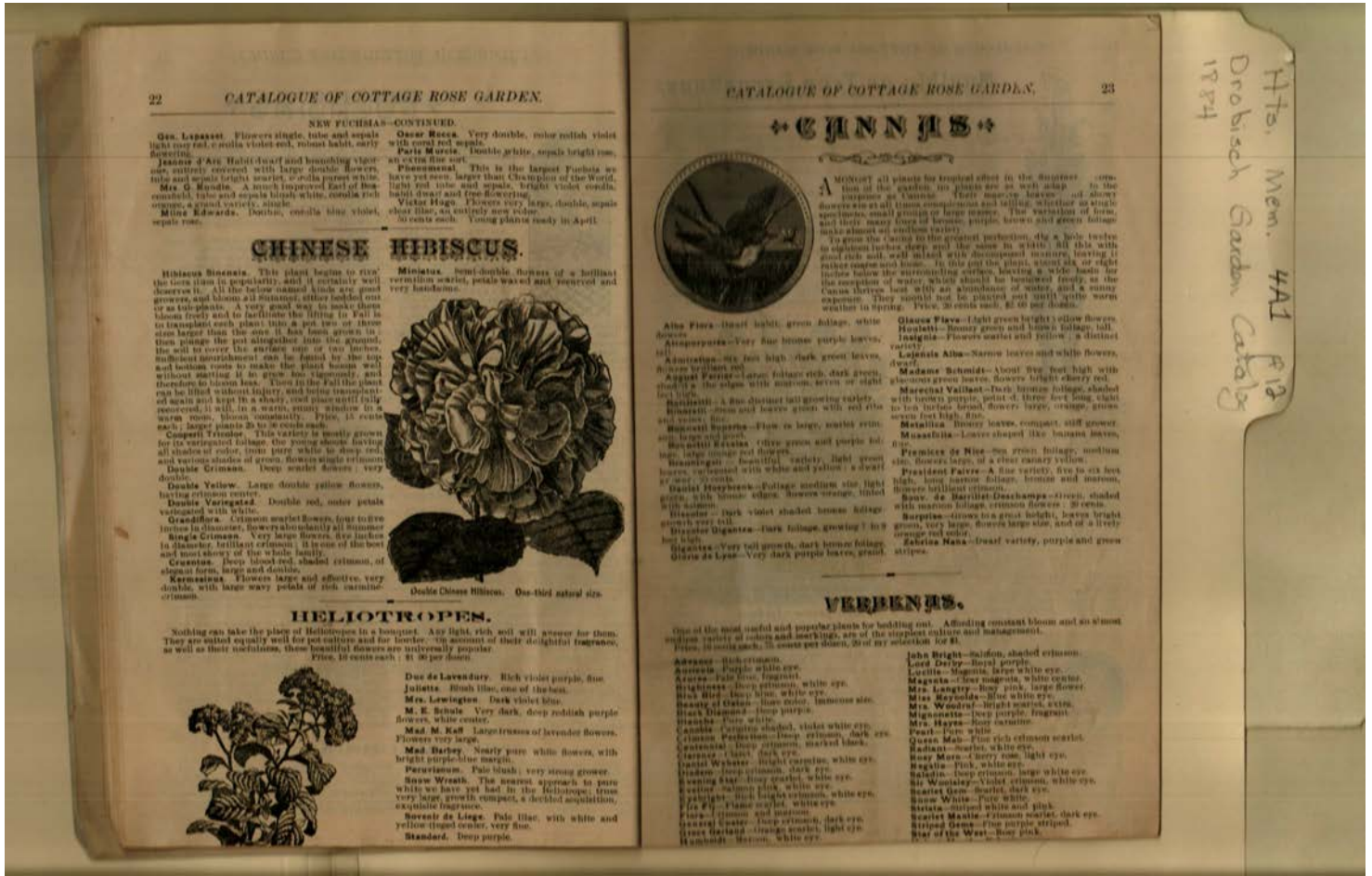
**Wave of Life.** Foliage bronzy yellow, flowers violet and crimson, 15 cts.

**Countess O. Schaffgotschke.** Scarlet tube and sepals, large single white corolla, very early flowering.

**Dea Gertrude.** Very double flowers, light lavender tube, corolla scarlet, tube and sepals of most compact habit, very fine.

Hts. Mem. 441 P. 13  
 Drobisch Garden Cataloge  
 1884

Names:  
 Fuchsias  
 Types:  
 catalog



Names:  
 Cannas  
 Types:  
 catalog



**Names:**  
 Carnations


**Types:**  
 catalog



Names:  
 General Collection  
 Types:  
 catalog

28 CATALOGUE OF COTTAGE ROSE GARDEN.

**BEGONIAS—Foliage Varieties.**



These are fine plants, with shiny foliage, in great variety as to color, suitable for planting in baskets or vases in shady situations. We offer the following as very desirable varieties: The price per dozen.

<b>Elegans.</b>	<b>Princess of Hannover.</b>
<b>Grace Fahnstock.</b>	<b>Queen of Heaven.</b>
<b>Lady Weaver.</b>	<b>Rea.</b>
<b>Longifolia.</b>	<b>Rea Magnifica.</b>
<b>Melanie Abarth.</b>	<b>Roseville Masella.</b>
<b>Melanie Bevere.</b>	<b>St. Louis.</b>
<b>Mosaic.</b>	<b>St. Louis.</b>
<b>Marshall.</b>	<b>St. Louis.</b>
<b>Mrs. H. M. Stewart.</b>	<b>St. Louis.</b>
<b>Picturata.</b>	<b>St. Louis.</b>

**BEGONIAS—Flowering Varieties.**

While the preceding varieties are grown for their fine foliage, the following are desirable for their flowers, being almost abundant bloomers, they are used for planting in the garden for summer decorations of pots and plants during the Winter. The flowers are beautiful, drooping in graceful bunches, of various colors, as given below. They are largely used in the construction of bouquets, etc., by florists; 15 cents each, except where noted.

**Argemonea Picta.** This belongs to the shrubby class, has leaves from four to six inches long, of bright green, spotted with white. 25 cents each.

**Alba Perfecta Grandiflora.** Fine white flowers.

**Digoviana.** The flowers light pink with dark edges.

**Drum.** Pure white flowers, double heads.

**Glaucophylla Scandinava.** A beautiful drooping variety, having large panicles of single-stemmed colored flowers, produced during the Winter months. A very fine plant for hanging baskets in Winter. 20 cents each.

**Hybrida Multiflora.** Very fine, free flowering, blooming continually during the Winter. It is of remarkable heat and compact growth.

**Incarneatæ Rosa Speciosa.** Bright rose, strong growth and profuse bloomer.

**Lappetree.** Bright pink, free Winter bloomer.

**Little Alba.** Large leaves of cream white flowers. 20 cents each.

**Sanderwood.** A fine plant for shady situations, where it will grow about a foot high, with pretty shining foliage, and bright crimson wick-like flowers.

**Waldeniana.** An exceedingly fine variety, with small leaves of a delicate shade of green, stems and leaf stalks bright crimson, blossoms very pink and produced freely in Summer and Autumn.

**Waldeniana Alba.** Flowers white.

**Miniata.** A fine, graceful, upright plant, with bright orange-red coral like flowers.

**Palmetta.** An ornamental leafed variety, popular for its Palm-shaped leaves.

**Pigrami.** Winter flowering variety, flowers red and white. The leaves are edged with bronze, giving the plant a very novel appearance.

**Polystachya Covillei.** Bright colored, drooping flowers.

**R. Polystachya.** Salmon colored flowers, small oval foliage, drooping habit, size for baskets.

**R. Richardsonii.** Very small oval foliage of dwarf habit, and panicles of pure white flowers.

**R. Zinnia.** 1-1/2 inch green foliage with light green calyx, panicle of flowers.

29 CATALOGUE OF COTTAGE ROSE GARDEN.

**CAMELLIA JAPONICA.**



**ELBRODENDRON BALFOURI.**

A last house climber of great beauty, the flowers are bright scarlet, mounted by a long like stalk of pure white, the veins or parties of flowers are streaked with a light in white, and when trained upon the surface of a last house, and having few, have a rich and elegant appearance. 25 cts.

**CORREA GRANDIS—Variegata.**

A variegated variety of the well known favorite climber, C. grandis, the leaves are variegated with yellowish white, which contrasts most beautifully with its purple, or crimson flowers. It is a vigorous grower, and may be easily trained to the height of 20 feet in one season; 25 cts.


**CORONILLA GLAUCA.**

There are very few really good yellow blooming plants that will answer either for Summer or Winter blooming. This is one of the best bearing bright yellow pan-shaped flowers in winter, which are very fragrant; 25 cts.

**COLEUS "Acoma."**

This variety is remarkable for its extremely large leaves, which are frequently six inches in length by four inches in width, luxuriantly colored, light and dark green ground, with yellow, pink and deep crimson margin, very attractive; 10c.

**CALLA ETHIOPICA.**



The great beauty of aquatic plants leaves their stems, and flowers of the most exquisite beauty and pure texture from pure white to crimson, in almost endless variety, their culture is nearly related to that of the Acanth, but their demands are more certain, require shade and moisture throughout the season, their time of blooming is Winter and early Spring, requires a moderate and diffused temperature, with an artificial heat or cold, then set with flowers light great care must be taken in watering, when set on dry the buds are susceptible to rot for good plants that will bloom next Winter. 25 cts.

**CANTHARIA GYMNOCARPA.**

A delicate ornamental house plant, it forms a cluster of two feet, making a beautiful arrangement of silver and gold, well suited to decorate the home with dark foliage plants, as a plant for hanging baskets it is also unsurpassed, its drooping into the house being very effective; 15 cents each, \$1.00 per dozen.

**CANTHARIA.**

Brilliant. A very pretty plant with green and yellow colored foliage, of moderate size, excellent for hanging baskets, etc.

**FRANKIA.** A beautiful plant with small fine leaves, profusely covered with small rose-colored flowers during Winter; 15 cts.

**CINERARIA.**

**Maritima.** Pure white. Resembles the Candian, in its double white foliage, but with finer and more delicate and longer growth; 15c.

**CIRRUS DISCOLOR.**

A well known greenhouse climber, with leaves luxuriantly shaded with dark green, purple and white, the upper surface of the leaf having a rich velvety appearance. The leaves are much used for trimming the margins of baskets and baskets of flowers. It is said to be grown in the shade in summer; 25 cts.

**CROCODIA PLATYLADA.**

A plant of very singular and interesting growth, stems and branches growing in flat and broad plates, of a half inch or more, well suited for vase, baskets and rustic work of any culture; 15c.

**CONVOLVULUS MAURITANICUS.**

A beautiful trailing plant for baskets. The flowers are large, freely color bright blue, two inches in diameter; 20 cents each.

1884  
 Hts. Mem. 441 p. 12  
 Drobisch Garden Catalog

Types:  
 catalog

**LAGERSTROMIA INDICA RUBRA.**  
 Crimson Crane Myrtle - A good improvement on the old pink variety. The blossoms which have a very peculiar shape, looking as if cut out of fine crepe de elle, are of a bright fiery crimson, and are produced quite freely after the plant gets to be of some size. 15 cts.

**LAGERSTROMIA INDICA ALBA.**  
 White Crane Myrtle - With pure white flowers. It will be a good companion for the pink and crimson varieties, which bloom so abundantly in late summer and Fall. 15c. Large plants 50c.

**CHASSULA PERFOLIATA.**  
 A beautiful plant of easy culture, well suited for the parterre or conservatory in Winter. It grows about six inches high, with thick fleshy leaves, and about Christmas puts forth thick or leafy spikes on which are hundreds of small pure white star-shaped flowers, which remain in perfection quite a long time, in order to bloom well, should never be watered much. 15 cents each.

**CRESSATA CANTILLATA.** - Shows some as above, freely produced in Winter, with heart-shaped foliage.

**CRASSULA PATHULATA.**  
 Low trailing, with heart-shaped leaves and clusters of small white star-shaped flowers, of easy culture and rapid growth in, and valuable for rock work, baskets of vase. 15 cts.

**CUPHEA.**  
**C. Platycentra** - (Star Flower) - Small tubular flowers marked with white tips. 15 cts.  
**Hillside Pink** - This resembles in general style and habit of growth C. Platycentra, with small bright glossy green leaves and a profusion of trumpet-shaped flowers an inch in length, the upper half of the tube of which is bright crimson, the lower half white, and the end violet purple. 15 cts.  
**Hyaopifolia** - A pretty little plant, about eight inches high, producing purplish blue flowers from the entire season, well adapted for borders of flower beds, vases or hanging baskets. 15 cts.

**CYCLAMEN PERVICUM.**  
 Alpine Violet - A lovely little Winter blooming bulb with thickly marked foliage and very pretty fragrant blossoms of peculiar shape. It remains in bloom a long time, a single flower lasting for weeks. Some have pure white flowers, others white with pink or crimson centers, and all equally a very desirable plant and well adapted for house-culture. 20 cents each.

**CYPERUS ALTERNIFOLIUS.**  
 A plant of peculiar formation. It produces heavy smooth, erect-growing stems about two feet high, which are crowned with a bunch of long narrow leaves, giving it a close resemblance to an umbrella, for which reason it is frequently called the Umbrella Plant. It is desirable for garden decoration and will succeed well when grown in water. 25 cts.

**CYPERUS A. VARIEGATA.**  
 Same as preceding, but with stems and leaves variegated green and pure white, making it very attractive. A scarce plant. 30 cts.

**DAHLIAS.**  
 Well-known autumn flowering plants, growing from two to five feet high, and producing a profusion of flowers of the most perfect and beautiful forms, varying in color from the palest white to the darkest saffron. Our collection contains the most varied in cultivation, embracing every shade and color, and the most perfect symmetry of form. 30 cents each. \$2 per dozen.

**DAPHNE INDICA ALBA.**  
 A greenhouse plant, of striking rose white flowers, very fragrant, desired for bride's bouquets, etc. 25 to 30 cents each.


**DURANTIA DR. MARTI VARIEGATA.**  
 A plant of free growth and vigor, of which one grows, with a golden yellow. 30 cts.

**DELCHAMPRIA ROZLIANA ROSEA.**  
 Most ornamental plant producing an abundance of red leaves of a peculiar shape and a very pleasant fragrance, good for greenhouse and conservatory culture. 30 cents each.

**DELPHINIUM FORMOSUM - Hardy Perennial Larkspur.**  
 Large bright blue, white variety. This is among the finest hardy biennial plants in cultivation, flowering in full splendor of the most brilliant blue. It is not allowed to produce seed. It will flower from July to November. 30 cents each. \$2 per dozen.

**DEUTZIA GRACILIS.**  
 One of the prettiest hardy shrubs of small size in cultivation, of neat, compact habit, with slender branches and small leaves, growing in neat, compact clump. It never exceeds two and a half to three feet in height, making it very desirable for small gardens, or where tall growing shrubs are objectionable. In May it is completely covered with trusses of pure white blossoms, which last some weeks in the city of the Valley. 30 cents.

**DIANTHUS QUERTERI - German Pink.**



**DIANTHUS QUERTERI - German Pink.**  
 This beautiful pink grows a foot high, flowers rich purple crimson, two inches in diameter, double and well formed. It blooms from June to January, and is useful for bouquets, vase-culture. 15 cents each.

**DIACYNA - Dragon Tree.**  
 Beautiful ornamental-leaved plant, much used for centers of baskets or stands. They prefer the shade.

**D. Terminalis** - Rich crimson foliage, very ornamental as a parterre plant or in rustic baskets, etc.

**D. Fargesii** - Deep purplish crimson foliage, quite attractive. 30 cents each.

**EULALIA JAPONICA VARIEGATA.**  
 A very graceful tall ornamental leafy plant from Japan. Long narrow leaf blades striped green, white and often pink or yellow. It flowers with a cluster of flower spikes. The flowers are surrounded by long silky threads, which, when fully ripe, expand but unlike an ostrich feather when stirred. These dry flowers are valuable as parterre ornaments, as they retain their beauty for a long time. 30 cents each.

**HEBEVRIA.**  
 A beautiful shrub with thick fleshy leaves, from the stem and lower part of which small white flowers are produced in great numbers. It is a very desirable plant for a dry situation. It is not allowed to produce seed. It will flower from June to August. 30 cents each.

**RICHARDIA AMAZONICA Amazon Lily.**  
 A very ornamental plant with broad glossy red leaves and large and elegant flowers of the richest white and yellow. It is not allowed to produce seed. It will flower from June to August. 30 cents each.

**RYTHIRIA OR CORAL PLANT.**  
 These plants are not little known, as they would be more generally cultivated if they were tall in the garden. They are of easy culture, and are very desirable for small gardens, or where tall growing shrubs are objectionable. In May it is completely covered with trusses of pure white blossoms, which last some weeks in the city of the Valley. 30 cents.

**RIANTHUS HAVERNIS.**  
 A very ornamental ornamental green and a double flower, but not as regular and some flowers are not as large as the height of from nine to twelve inches. It is very useful for vase or basket culture. 30 cents each.

**RUPHYMUS - Redness Variegata.**  
 Quince - Bearing Bush - A hardy evergreen shrub, bearing fruit in trees, buildings, houses, etc. with shining foliage variegated with silvery white. It is a desirable plant in a garden as a dwarf espalier bush, even when there is nothing else to be seen. 30 cents each.

**Ruphymus Japonicus Aretus** - A handsome evergreen shrub, with a bright yellow blotch in the center of the leaf, an excellent house plant for Winter growing well in the shade. 30 cents each.

**RUPATORIUM.**  
**Arboreum** - Large clusters of white feathery flowers produced abundantly during November and December. 30 cents each.  
**Pringlei** - White, blooming from January to February. 30 cents each.  
**Regium** - A valuable Winter blooming plant, blooming from December to March. Flowers pure white, borne in corymbs three inches in diameter, of a shape most valuable for bouquets and baskets. 30 cents each.

**SUPHORIA.**  
**Jacquiniana** - A well known but home plant. Blooms in late Winter. Flowers orange-scarlet. 30 cents each.  
**Spicata** - A handsome plant for the window or conservatory, of peculiar appearance. The stout, stem becomes thickly covered with spines. Foliage small and pearly. Flowers of a bright cherry crimson produced throughout the greater part of the season. 30 cents each.

**SIBYRTHIUM.**  
 Dwarf plants for the greenhouse and conservatory, of easy culture and very desirable for house plants. 15 cents each, except where noted. It is not allowed to produce seed.

**Sibirthium** - A very pretty plant and very good for the window or conservatory. It is not allowed to produce seed. It will flower from June to August. 30 cents each.

**Sibirthium** - A very pretty plant and very good for the window or conservatory. It is not allowed to produce seed. It will flower from June to August. 30 cents each.

**Sibirthium** - A very pretty plant and very good for the window or conservatory. It is not allowed to produce seed. It will flower from June to August. 30 cents each.

**Spicata** - Large flowers, two inches in length, blue and white, double, brilliant crimson, or very free blooming habit, a single plant of this variety, even in eight or nine inch pot, may produce six or seven flowers from December to May. The Spicata - A variety of unusual size, color a shade lighter than Spicata, very and somewhat pedicel. 15 cents each.

**SHINING FOLIAGE, variegated and mottled with dark green, crimson and pink, very showy. 30 cents.**

**LEUCODERMIS** - Foliage green, flowers purple, very profuse. 30 cents.

**POLYANTHUS** - This plant produces lovely deep blue flowers, very free from Christmas to March. It is of the easiest culture, requiring but very little care, and grows in close leafy shape, with many side branches, each of which is furnished with a spike of numerous blossoms. On account of its ran color, it will become a popular plant with florists, as it will become more generally known. 30 cents each.


**FAR-PALM - Levelevis Silenciosa.**  
**Lactaria Borocata** - This handsome Palm is of very easy culture and it can be kept in an ordinary dwelling. During Summer it is one of the most decorative plants on the lawn, and also well adapted as a center plant for vases. The leaves grow in very large size. 30 cents each.

**FABIANA - Imbricata.**  
 A handsome Fern-like plant from Chili, attaining a height of two feet, of easy culture and producing a profusion of white flowers. 30 cents.

**FARGUEIUM - Brands.**  
 A fine foliage plant with leathery dark green leaves, distinctly bluish golden yellow. 30 cents.

**FITTONIA.**  
 Plants well adapted for use in ferneries or warblers cases. 15 cents each.  
**Argyrea** - Bright green foliage, beautifully spotted with silver white.  
**Versicolor** - Foliage deep green, with veins varying from red to rich pink.

**FUCHSIA - Winter Blooming.**



Hts. Mem. 441 p. 12  
 Drobisch Garden Catalog  
 1884

Names:  
 Crapemyrtle  
 Types:  
 catalog



34 CATALOGUE OF COTTAGE ROSE GARDEN.

**LOBELIA**—Wave of Blue.  
Among the most useful plants for hanging baskets or vases, or outside nur in ribbon lines. Their dwarf habit and the profusion of their charming little blue flowers, render them exceedingly ornamental. 15 cts.

**LOPHOSPERMUM SCANDENS.**  
A handsome summer-climbing plant of rapid growth with heart-shaped leaves, and large rose-colored gloriole-like flowers, grows from six to eight feet high. 15 cts.

**LYCHNIS**—Double White.  
A valuable hardy plant for bouquets; flowers pure white, resembling a double carnation. It blossoms from the middle of June to October. 30 cts.

**LYCOPodium, or BELAGINELLA.**  
Plants with fine green foliage, adapted for ferneries and rock work. 10 cts.

**MAHERIA ODORATA.**  
Honey Bell—A pretty basket plant, with neatly cut foliage, and small bell-shaped, drooping gold-en-yellow flowers. 10 cts.

**MADERIA, or MIGNONETTE VINE.**  
One of the finest plants for rapidly covering trellis work, flowers feathery, white, with fragrance of Magnolia; 10 cents each, 25 cents per dozen.

**MANETTIA**—Cordifolia.  
An ornamental climber of great beauty, covered with long, tube-shaped scarlet flowers during the entire season, beautiful for small trellis. 30 cts.

**MARANTHA.**  
These are very fine variegated foliage plants for greenhouse and conservatory culture. The variegation in most varieties is very rich and attractive, of the various shades of green, purple and white. They prefer a warm temperature, and should be kept neither shady and moist. I have several fine varieties. 50 cts.

**MEYERIA RECTA.**  
Is one of the most beautiful greenhouse shrubs. The flowers are Gloxinia-shaped, dark blue, getting lighter towards the center, with a golden yellow throat. It is in bloom all through the early spring and summer, and is then completely covered with flowers. 30 cts.

**MAURANDIA BARCLAYANA.**  
These varieties, purple, pink and white. These are pretty climbing plants with fine foliage and handsome, tube-shaped flowers, produced abundantly all summer. They will grow five to six feet high in one season, and are suitable for trellis or hanging baskets and vases; 15 cents each, three varieties for 50 cts.

**MESSEMBRYANTHEMUM**—Condition Var.  
Variegated Ice Plant—Valuable for baskets or vases. The variegation of the leaves, green and white, is very distinct, and the starlike purple flowers contrast finely with the creamy-white foliage. 15 cts.

**MELALEUCA DIOBAMAEOLIA.**  
A pretty little evergreen plant for the conservatory and greenhouse, very fine green foliage, with a pleasant scent; 30 cents.

**MYOSOTIS PALUSTRIS**—True Forget-Me-Not.  
A hardy herbaceous plant, with light blue flowers in clusters, very pretty, does best in shady places with good supply of water. 15 cts.

**DOUBLE BRIDAL MYRTLE.**  
A pretty plant, of compact bushy growth, with small dark green foliage, of a pleasant fragrance, and small double white blossoms in the spring. 30 cts.

**NIPERBERGIA.**  
Graziola—A pretty little bedding plant of spreading habit, with narrow leaves and pale blue cup-shaped flowers, blooming all summer; 15 cts.  
Grandiflora Alba—same style as preceding, with white blossoms; 15 cts.

**OTHORHA.**  
Cassabella—Resembles the bellows in growth and habit, flowers bright yellow, produced very freely, a fine plant for baskets and vases. 15 cts.

**OLEANDERS.**  
Plants of easy culture, with a liberal supply of water they soon root of the runners, and can be kept over Winter in a cellar, without light.  
Frost 20 cents each, except where noted.  
Yellow Oleander, (Lutea).—A new and scarce variety, with light straw-colored blossoms.  
Scarlet Oleander, (Africana).—A variety with large, semi-double, scarlet flowers.  
White Oleander—strong growth, with semi-double, pure white flowers. 15 cts.  
Double White Oleander.—A new variety, flowers not so large as the single, but are double and have a light rosy-lilac tint.  
New White Oleander, Madoni Grandiflora.—A superb new variety with flowers as pure white as Cape Jasmine, semi double, and as large as the old double pink. Doubtless the finest white Oleander in cultivation.  
Double Pink—Large double flowers, very showy; 30 cts.  
New Oleander, "Shaw's Seedling"—Slender foliage, deep crimson, semi-double flowers, quite distinct; 50 cts.

**ORUNIA MISSOURIENSIS.**  
A genus of Chatham, with broad, prickly stems and large yellow flowers, entirely hardy, and fine for rock work, etc., the only one that will live out over Winter in the North. 25 cts.

**OLEA FRAGRANS**—Sweet Olive.  
A favorite plant with deep green foliage and small white flowers, delightfully fragrant, blooming in Fall and Winter. The perfume of a single plant is sufficient to fill a large conservatory; 25 cts.

**ORLEANS.**  
Floribunda Rosea.—This is an extraordinary variety, excellent for pots and baskets, leaves three-pinnate, flowers in clusters, half an inch or more in diameter, of a pale pink color. 30 cts.

**FRUITFUL ALBA**—same style of growth as preceding, with pure white flowers, blossoms abundantly all summer, nice for baskets or bedding out in the garden; 15 cts.

**ORIGANI.**  
The upper side of the leaf is rich dark green, and the under side a beautiful violet purple. It blossoms freely, bearing masses of bright yellow flowers. A good basket plant. 15 cts.


**PAMPAS GRASS**—Oxyerium Argenteum.  
A stately species of grass from South America, six feet high, with plumes of silky white, one to two feet in length. It looks best as a single specimen. As it is not quite hardy North, it requires protecting at night or ten inches of leaves around the roots or it can be removed to the cellar, and replanted in spring. 25 cents; extra large plants, 50 cents.

**PANICUM VARIEGATUM.**  
A beautiful variegated plant for rustic baskets, vases, etc. the leaf is white tipped edged with pink. It is of free growth and graceful habit. 15 cts.

**PANICUM Plicatum.**  
A handsome ornamental grass for outside plant, fine and large leaves, it grows about 30 inches high with broad blades, variegated green and white, handsomely bordered. 30 cents.

**PENSTEMONS.**  
Fine plants right home bushes to try but in height, blossom from August until frost. Flowers in spikes of Gloxinia-like form, shaded and spotted in all colors of white, purple, scarlet, crimson and pink.  
Penstemum Decandollei.—Pink lined.  
Rusid.—Crimson, feathered purple.  
Livingstone.—Crimson, pink lined.  
Dwarfed Boston.—Crimson, white lined.  
Mona Parry.—Purple, pink lined.  
Ruber Magnifica.—Red and white.  
St. Paul.—Magna crimson.  
15 cents each.

35 CATALOGUE OF COTTAGE ROSE GARDEN.

**PANSIES.**  
  
I have a special strain of the Broad rose, large size, fine form, and finely marked flowers; 10 cents each, \$1.00 per dozen.

**PARROTULUM ROTUNDUM.**  
The Grasses, or Cup Lily—A native of the South, and hardy in all southern States; flowers pure white, very sweet; 25 cents. 40 cents extra when sent by mail.

**PERISTROPHE ANGSTIFOLIA AUREA.**  
An elegant foliage plant for vases and baskets, leaves brilliant golden yellow, variegated with bright green. 10 cts. each.

**PERRINETUM LONGISTYLUM.**  
A handsome variegated fern, grows about 18 inches high, and bears in late summer large, fox-tail like plumes very pretty on the garden and also useful for Winter bouquets. 50 cents.

**PILEA**—Auricular Pileus.  
Muscovae.—A pretty little plant about 8 inches high, with very small, green leaves and minute pink blossoms all over the plant.  
Meyeri.—Another variety of low, dense growth, only three inches high, and of bright green color, well suited for baskets and vases. 10 cents.

**PLUMBAGO.**  
Musa.—A pretty white-flowering plant for greenhouse or conservatory, producing large masses of long, slender blossoms, which last a long time; 10 cents each.  
Lepante.—A fine herbaceous plant of low growth, with fringed flowers of the richest shade of deep blue, blooming without interruption from August until frost. It is generally hardy, and will grow without any special care; 15 cents each.  
Cavendish Leadwort.—An old but very pretty greenhouse shrub, also well suited for planting out. It produces large masses of green flowers during summer and Fall. 15 cents each.

**PERENNIAL PHLOXES.**  
This tribe of plants will succeed in any good soil, and over it. To the section they are treated under. Pansies, perfectly hardy, producing a profusion of blossoms during summer and Fall. There is every shade of color from pure white to rich purple and crimson; 15 cents each.

**POINSETTIA PULCHERRIMA.**  
A tropical plant of gorgeous beauty, the bracts or green spatulate, one foot in diameter, of the most dazzling color. In a hot-house temperature of 60° it begins to bloom in November, and remains expanded until February; 25 cents each.  
Poinsettia, New Double Flowering.—The bracts of this one kind are gathered into clusters, which fill up the center. It is strikingly gorgeous, of a most vivid and brilliant scarlet color. 10 cents.


**PEPEROMIA.**  
Plants particularly adapted for window-cases and cabinets. Of dwarf habit, with fine silvery markings and reticulations in the foliage. They require partial shade and moisture.  
Muscovae.—Silver outside foliage, very pretty; 10 cents each.  
Muscovae.—Flowers in delicate spikes of snowy white; a free bloomer, and the spikes last a long time in perfection. 15 cents each.

**PRIMROSE**—Chinese.  
Double White.—One of the most useful plants for Winter and early spring blooming. Flowers pure white, perfectly double, in bloom from November till May during which time a strong plant will produce many as ten hundred flowers. 25 cents.  
Single Red and White.—One of the most Winter blooming plants and of easy culture. They are especially adapted for window gardening, giving an abundance of bloom during the Winter months. Care should be taken not to keep them too wet. 15 cents each, 30 cents for 40 cents.

**NEW DWARF POMEGRANATE**—James Vick.  
A dwarf variety which will bloom the first week of the season, and of the most brilliant orange color, blooming throughout the latter part of summer. It is nearly hardy and may be left out in sections where the thermometer does not fall 15° below freezing. In colder latitudes it can be kept in cellar over Winter without difficulty. 25 cts.

**Double Heart**—This variety has large flowers, about three inches in diameter, and as double as a single, and will grow as large as an Oleander; 30 cts.

**PILODORUS BUAVID.**  
A charming climber, very useful for forming festoons, also fine for house in Winter; 15 cts.

**PASSIFLORA.**  


Att. New Fall P. 13  
Drobisch Garden Catalog

Types:  
catalog



**Names:**  
 Special Collections  
**Types:**  
 catalog

**TIGRIDIA—Small Flowers.**

The flowers are about four inches in diameter. The bulbs are planted about the middle of May and taken up in October and kept over Winter in dry sand.  
**Conchiflora**—Orange with crimson spots, flowering from July to October. Strains and beautiful shell like flowers.  
**Paysonia**—Red with crimson spots 10 cents each, \$1 per dozen.

**TRITOMA GRANDIS.**

Very showy, late flowering, half hardy herbaceous plant, like the foliage and tall stems, producing magnificent terminal spikes of dark red and orange tinted flowers, requires a slight covering in Winter; 25 cts.

**SWEET VIOLETS.**

**Belle de Chatouay**—Flowers large, very double, petals well set and arranged like a double Camellia flower, pure white.  
**Marie Louise**—The sweetest and most beautiful double Violet in cultivation, of large size, a rich dark blue, light center.  
**Princess Louise**—Flowers double white, very fragrant.  
**Queen Victoria**—Single dark purple flowers, very large, measuring one and a quarter inches across.  
**Everlight**—Double, light blue, fragrant.  
**Blackburn**—Single, dark blue, very fragrant and free blooming.  
**White Star**—Large, single white.  
**Whisper**—Single, light blue, fragrant.  
 Price, 10 cents each. One in variety for 75 cents.

**VINCA ELEGANTISSIMA.**

A beautiful variegated trailing plant, fine for hanging baskets, vases, or the undergrowth of shrubbery. Leaves bluish yellow and green. Flowers deep blue; 15 cents each.

**VINCA HARRISONI.**

A variety of strong, rapid growth, margin of leaves rich dark green, with the undergrowth of light green; furnishing an abundance of star shaped, light blue flowers; 15 cents each.

**VINCA or Madagascari Periwinkle.**

This old and popular plant should be in every garden, producing its masses of bloom from June to frost, a compact bushy growth. Its continued bloom makes it a desirable plant for massing; 10 cents, \$1 per dozen, three varieties for 25 cts.  
**Alba**—Pure white.  
**Alba Oculata**—White, crimson eye.  
**Rosa**—Rose, dark eye.

**VERONICA.**

A summer flowering plant with dense spikes of flowers, colors, white, blue, violet and rose; price, 15 cents each.  
**Andromeda**—Violet and white.  
**Andromeda Variegata**—Variegated foliage.  
**Guerra de Lorraine**—Blue, blue and white.

**WAX PLANT.**



**Hoya Carnosa**—A climbing plant for house and porch, with thick dark green leaves, bearing exquisite wax like flowers; 25 cts.

**ZINGIBER OFFICINALE.**

The well known ginger of the shops; resembles in its general growth a dwarf variety of banana, and has a strong spicy smell when rubbed; may be cultivated as a pot plant, and does also well in aquatics; grows about one foot high. 75 cents.

**PLANTS FOR RIBBON BEDS.**

To those who wish plants in quantity for ribbon beds, between March 15 and June 15, I offer the following varieties by the hundred, at wholesale rates—not less than a hundred plants in one order, or twenty-five of any one kind will be sent at these prices:

	per hundred,		per hundred,
<b>Althea</b> , in variety	\$2 00	<b>Lotus</b> , in variety	\$2 00
<b>Archaeanthus Lindleyi</b>	4 00	<b>Vinca Alba Oculata</b>	6 00
<b>Calceol</b> , in variety	4 00	<b>Vinca Rosa</b>	5 00
<b>Cappas</b> , in variety	4 00	<b>Geranium—Gas. Great</b>	5 00
<b>Cappas Platycostis</b>	4 00	<b>Queen of the West</b>	5 00
<b>Caulophora gymnocarpa</b>	6 00	<b>Gas. Sheridani</b>	5 00
<b>Caulophora lanata</b>	4 00		

**FLORAL DECORATIONS.**

Bouquets, Cut Flowers and Floral Decorations for Parties, Weddings, Suppers, Funerals, etc., arranged in the best style, and can be sent by express any reasonable distance with perfect safety. The following designs and others are offered—prices varying according to the season, of the year, quantity and quality of flowers used, and the original cost of the frame-work of design.

<b>Bride's Bouquets</b> —Of choice white flowers, \$2 to \$5.	<b>Floral Designs</b> —Of various sizes and styles, \$2 to \$10.
<b>Bride's Maid Bouquets</b> —\$1 to \$2.	<b>Baskets</b> —Of wire, willow or straw, \$2 to \$10.
<b>Hand Bouquets</b> —For parties, \$1 to \$4.	<b>For Funerals</b> —Anchors, crosses and large, \$4 to \$10.
<b>Button Hole Bouquets</b> —10 to 25 cents.	Crosses, wreaths, stars, Masonic emblems, etc., \$1 to \$6.
<b>Table Bouquets</b> —\$1 to \$2.	

**SPECIAL COLLECTIONS OF PLANTS FOR FLOWER GARDENS.**

150 PLANTS FOR \$10.00; ABOUT ONE-HALF REGULAR RATES.



Encouraged by the universal satisfaction my "Special Collections" of plants has given for the past year, and to meet the varied wants of my customers, I offer three "Special Collections," differing in style and purpose. As I offer a great variety of plants in these collections at a very large reduction from catalogue rates; and it will be without that I have this season increased the number to 150 plants instead of 120, as before, I feel confident that I will be able to give entire satisfaction to all who favor me with their orders.

The selection of varieties must invariably be left to me, but a good assortment will always be sent.  
 For \$5.00 I will send one-half of either collection.  
 The collections will be carefully packed and delivered at Express Office here, or another place sent free by mail, postpaid.

**Collection No. 1. 150 Plants, Price, \$10.00.**

Suitable for small grounds, and for growing in pots. Many of the plants will also do well in conservatory or pans, in Winter.

12 Double Geraniums,	12 Monthly Carnations,	1 Violet,
12 Double Geraniums,	12 Basket Plants,	2 Lemon Verbenas,
8 Fragrant Geraniums,	6 Vases for Trellises,	2 Vinosa, Red and White,
6 Variegated Geraniums,	1 Caps Jasmines,	3 Fuchsias,
3 Balsam Begonias,	1 Candelabra Jasmines,	7 Lobelias,
6 Flowering Begonias,	1 Night Blooming Jasmine,	6 Bourcades,
12 Monthly Roses,	1 Galia,	3 Ferns,
12 Calceol,	2 Primroses, single,	3 Lyopods,
6 Heliotropes,	1 Cypripis,	12 Double Tuberoses,

For \$5.00 I will send one-half of the above collection.

**Collection No. 2. 150 Plants, Price, \$10.00.**

For general bedding purposes, embracing showy and distinct varieties, of easy culture, and giving a fine succession of bloom from early spring until late Fall. A number of foliage plants are also included in the list.

12 Geraniums, in variety,	6 Heliotropes,	4 Petunias,
12 Verbenas,	12 Gladiolus,	4 Salvia,
12 Calceol,	12 Tuberoses,	4 Dahlias,
6 Achyranthus,	1 Lemon Verbenas,	1 Lilias,
12 Monthly Roses,	6 Vinosa,	3 Camas,
3 Fuchsia,	6 Lantanas,	12 Monthly Carnations,
3 Agrostis,	1 Campanula medium,	

For \$5.00 I will send one-half of the above collection.

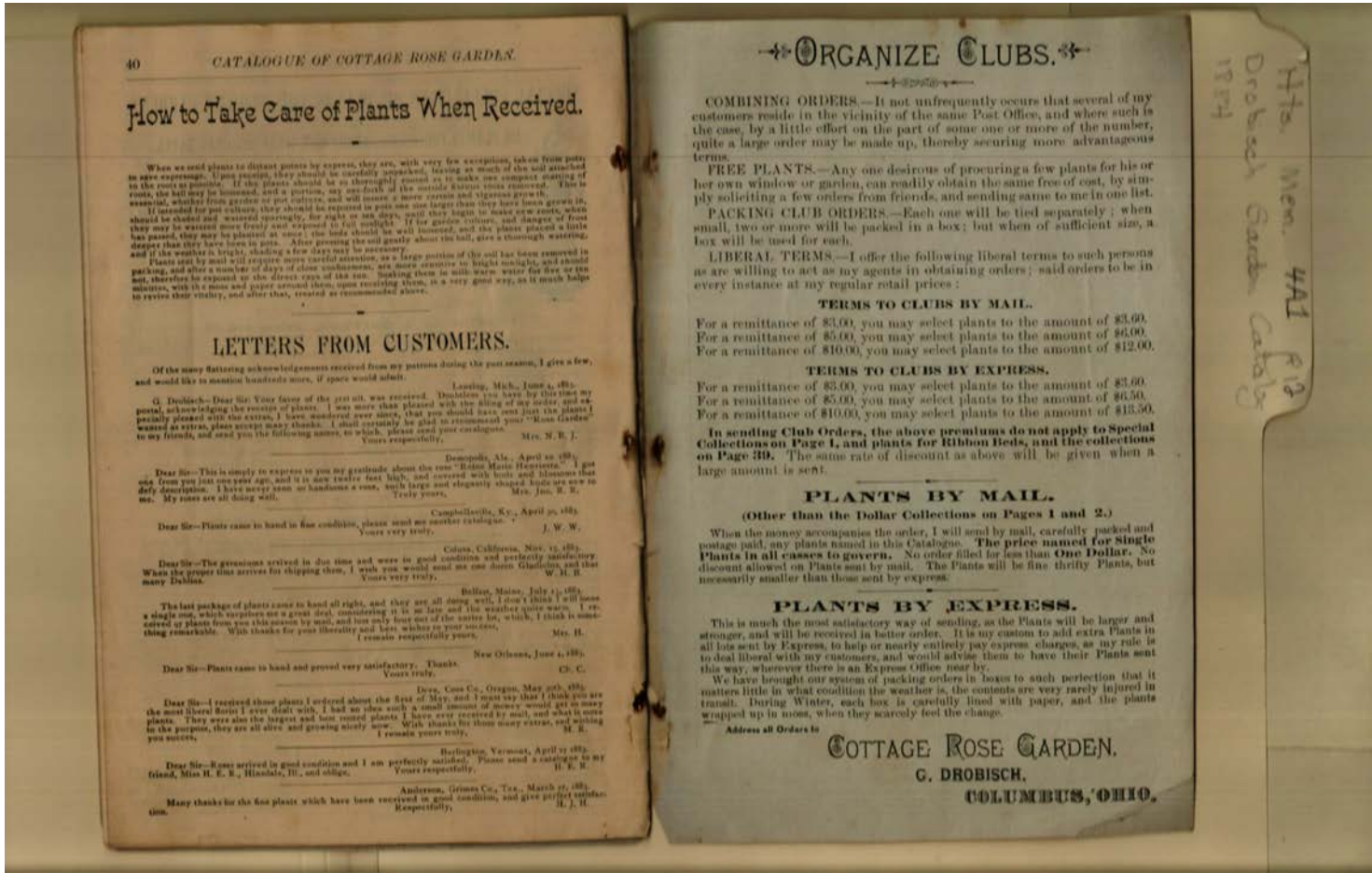
**Collection No. 3. 150 Plants, Price, \$10.00.**

Suitable for large grounds, where plants of rapid and strong growth, and such as will be the most showy and effective are desired.

9 Camas,	12 Yuccas,	7 Trilliums,
12 Calceol,	6 Heliotropes,	4 Geraniums, Gas. Great,
3 Scarlet Nivias,	3 Agrostis,	4 Geraniums, Queen of the West,
12 Verbenas,	3 Dahlias,	2 Candelabra Funerals,
12 Gladiolus,	6 Lantanas,	4 Double Petunias,
6 Centaureas,	12 Monthly Roses,	12 Geraniums, in variety,

For \$5.00 I will send one-half of the above collection.

Hts. Mem. 441 P. 13  
 Drobisch Garden Catalog



Names:

Cottage Rose Garden

Drobisch, G.

Letters and Clubs

Places:

Columbus, OH

Types:

catalog

Frances Cabaniss Roberts Collection: Series 4, Subseries A, Box 1, Folder 12

Drobisch Garden Catalog, 1884 - Early Huntsville Life and Memorabilia

Image 20 r04a01-12-000-0025 [Contents](#) [Index](#) [About](#)



**Names:**  
cover

**Types:**  
catalog

**Frances Cabaniss Roberts Collection: Series 4, Subseries A, Box 1, Folder 12**  
**Drobisch Garden Catalog, 1884 - Early Huntsville Life and Memorabilia**

[Contents](#) [Index](#) [About](#)

## Table of Contents

[Image 1](#) (r04a01-12-000-0005)

[Image 2](#) (r04a01-12-000-0007)

[Image 3](#) (r04a01-12-000-0008)

[Image 4](#) (r04a01-12-000-0009)

[Image 5](#) (r04a01-12-000-0010)

[Image 6](#) (r04a01-12-000-0011)

[Image 7](#) (r04a01-12-000-0012)

[Image 8](#) (r04a01-12-000-0013)

[Image 9](#) (r04a01-12-000-0014)

[Image 10](#) (r04a01-12-000-0015)

[Image 11](#) (r04a01-12-000-0016)

[Image 12](#) (r04a01-12-000-0017)

[Image 13](#) (r04a01-12-000-0018)

[Image 14](#) (r04a01-12-000-0019)

[Image 15](#) (r04a01-12-000-0020)

[Image 16](#) (r04a01-12-000-0021)

[Image 17](#) (r04a01-12-000-0022)

[Image 18](#) (r04a01-12-000-0023)

[Image 19](#) (r04a01-12-000-0024)

[Image 20](#) (r04a01-12-000-0025)

[Table of Contents](#)

[Name & Place Index](#)

[About the Collection](#)

**Frances Cabaniss Roberts Collection: Series 4, Subseries A, Box 1, Folder 12**

**Drobisch Garden Catalog, 1884 - Early Huntsville Life and Memorabilia**

[Contents](#) [Index](#) [About](#)

**Name & Place Index**

Cannas <a href="#">12</a>	Fragrant Geraniums <a href="#">9</a>
Carnations <a href="#">13</a>	Fuchsias <a href="#">11</a>
China Roses <a href="#">6</a>	General Collection <a href="#">14</a>
Coleus <a href="#">10</a>	Geraniums <a href="#">8</a>
Columbus Nursery <a href="#">2</a>	Hanford, R. G. <a href="#">2</a>
Columbus, OH <a href="#">1</a> , <a href="#">2</a> , <a href="#">19</a>	Hardy Roses <a href="#">7</a>
Cottage Rose Garden <a href="#">1</a> , <a href="#">2</a> , <a href="#">19</a>	Letters and Clubs <a href="#">19</a>
cover <a href="#">20</a>	New Plants <a href="#">3</a>
Crapemyrtle <a href="#">16</a>	Special Collections <a href="#">18</a>
Drobisch, G. <a href="#">1</a> , <a href="#">19</a>	Special Offer <a href="#">3</a>
Ever-blooming Roses <a href="#">5</a>	The Rose <a href="#">4</a>

# Frances Cabaniss Roberts Collection

**Preferred Citation:** Frances Cabaniss Roberts Collection, Archives and Special Collections, M. Louis Salmon Library, University of Alabama in Huntsville, Huntsville, AL.

**Collection Scope and Content:** The Collection of 114 Linear ft. includes a total of 156 Archival Boxes. The Frances Cabaniss Roberts collection covers the historical records of the Cabaniss Roberts family. This collection contains extensive correspondence records of the Cabaniss Roberts family circa 1830 to 1930.

**Archives/Special Collections Access Restrictions:** None

**Conditions Governing Use:** This material may be protected under U. S. Copyright Law (Title 17, U.S. Code) which governs the making of photocopies or reproductions of copyrighted materials. You may use the digitized material for private study, scholarship, or research. Though the University of Alabama in Huntsville Archives and Special Collections has physical ownership of the material in its collections, in some cases we may not own the copyright to the material. It is the patron's obligation to determine and satisfy copyright restrictions when publishing or otherwise distributing materials found in our collections.

**Provenance:** Gift of Johanna Shields on October 28, 2006.



THE UNIVERSITY OF  
ALABAMA IN HUNTSVILLE

**The UAH Archives and Special Collections  
M. Louis Salmon Library**