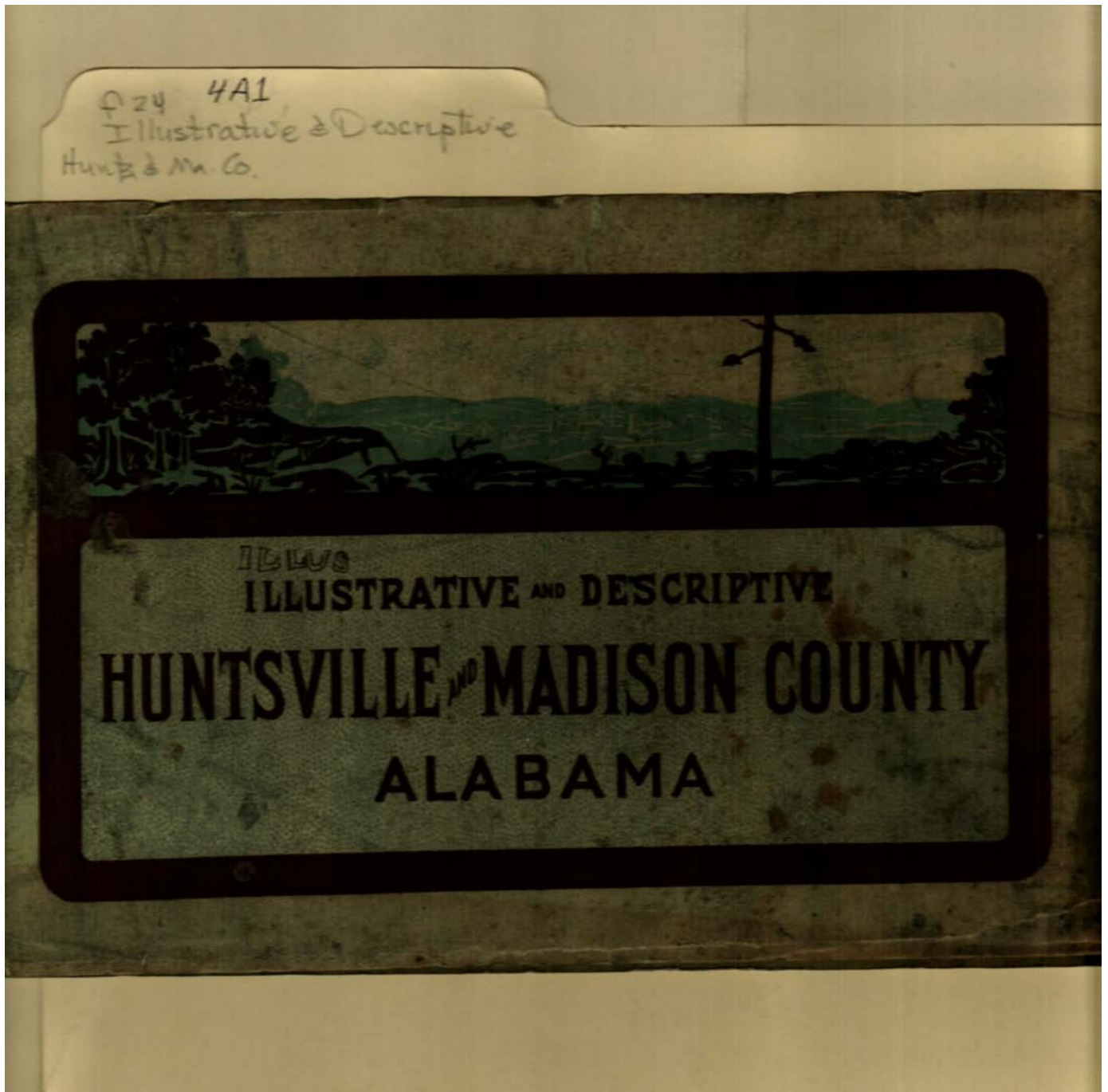


Frances Cabaniss Roberts Collection: Series 4, Subseries A, Box 1, Folder 24

Illustrative & Descriptive Huntsville & Madison County, circa 1910 - Early Huntsville Life and Memorabilia

Image 1 r04a01-24-000-0001 [Contents](#) [Index](#) [About](#)



Names:

Illustrative &
Descriptive

Places:

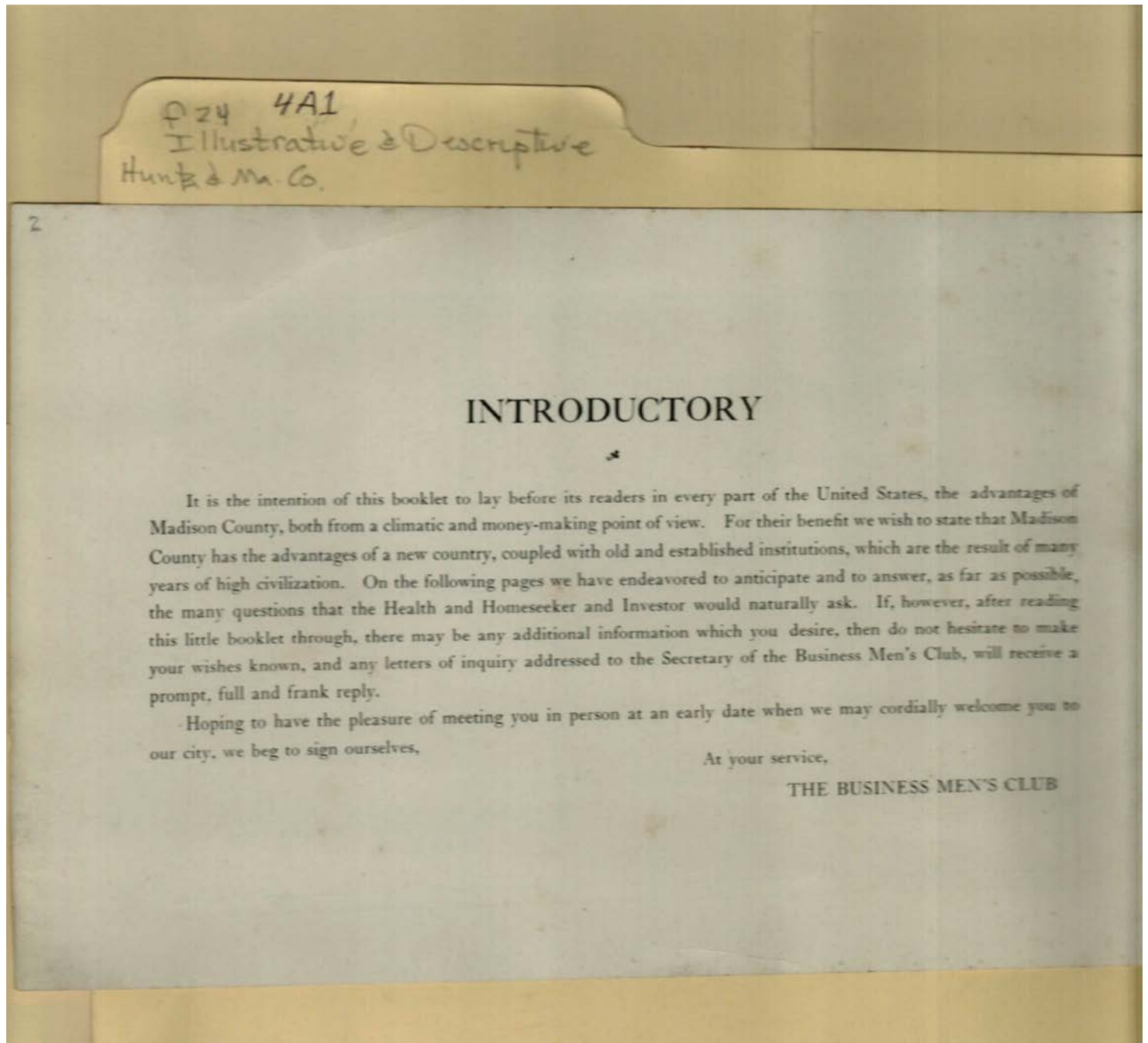
Huntsville, Madison
County, AL

Types:

brochure

Dates:

before 1908



Names:

Business Men's
League

Places:

Huntsville, Madison
County, AL

Types:

brochure

Dates:

before 1908



Names:

Local Churches

Places:

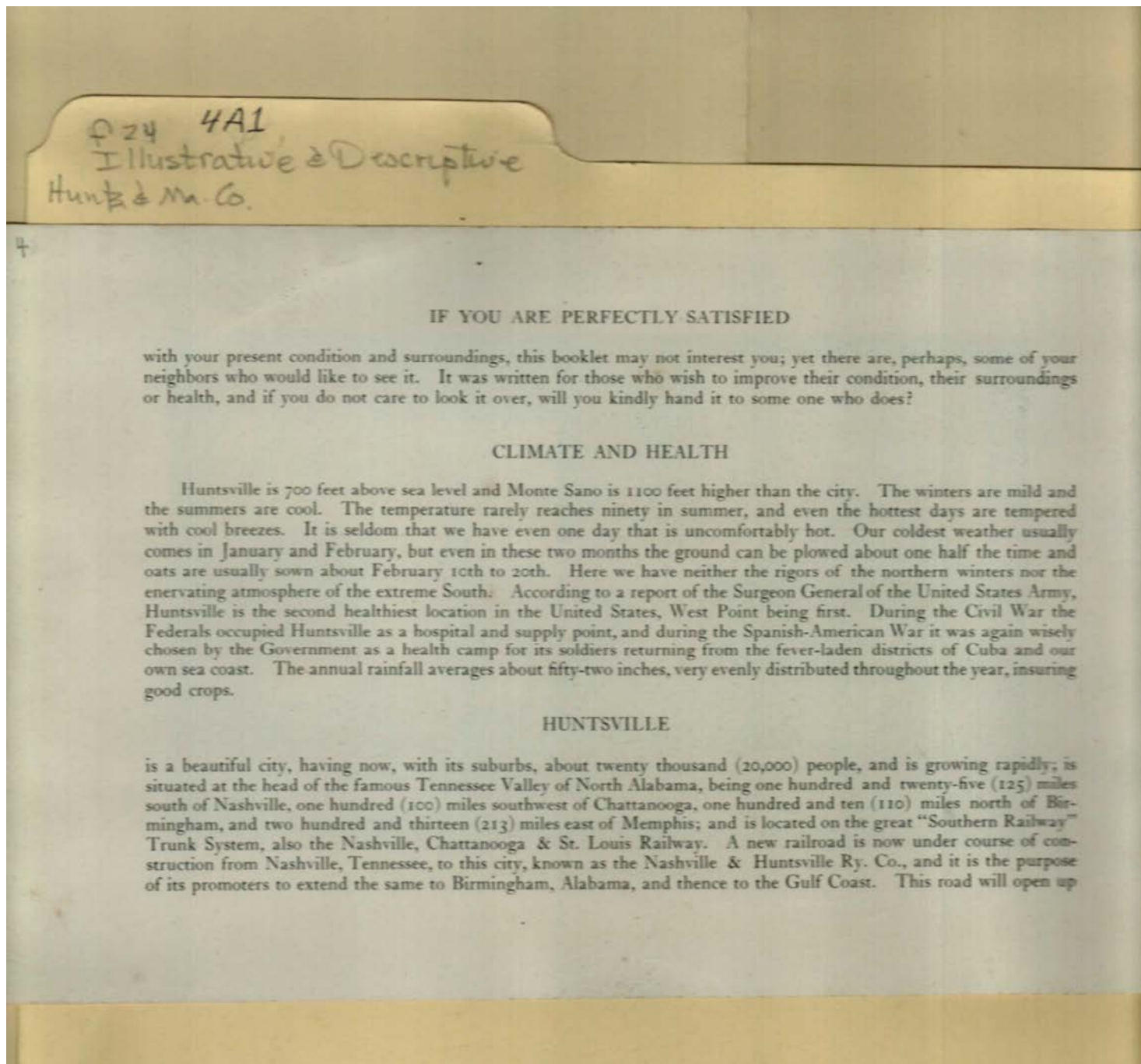
Huntsville, Madison
County, AL

Types:

photo

Dates:

before 1908



Names:

Huntsville
Description

Places:

Huntsville, Madison
County, AL

Types:

brochure

Dates:

before 1908



Names:

Local Churches

Places:

Huntsville, Madison
County, AL

Types:

photo

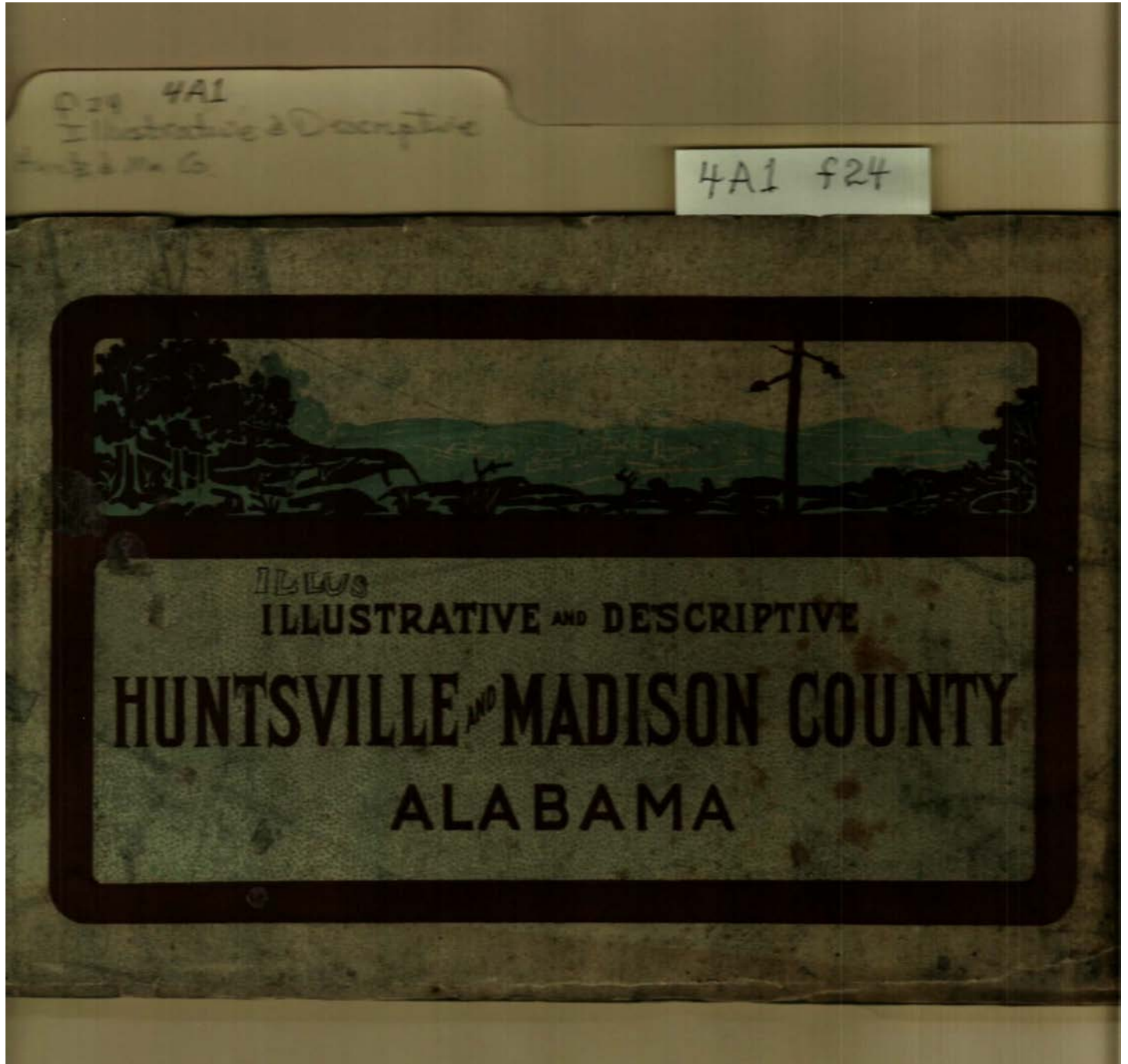
Dates:

before 1908

Frances Cabaniss Roberts Collection: Series 4, Subseries A, Box 1, Folder 24

Illustrative & Descriptive Huntsville & Madison County, circa 1910 - Early Huntsville Life and Memorabilia

Image 6 r04a01-24-000-0007 [Contents](#) [Index](#) [About](#)



Names:

cover

Places:

Huntsville, Madison
County, AL

Types:

brochure

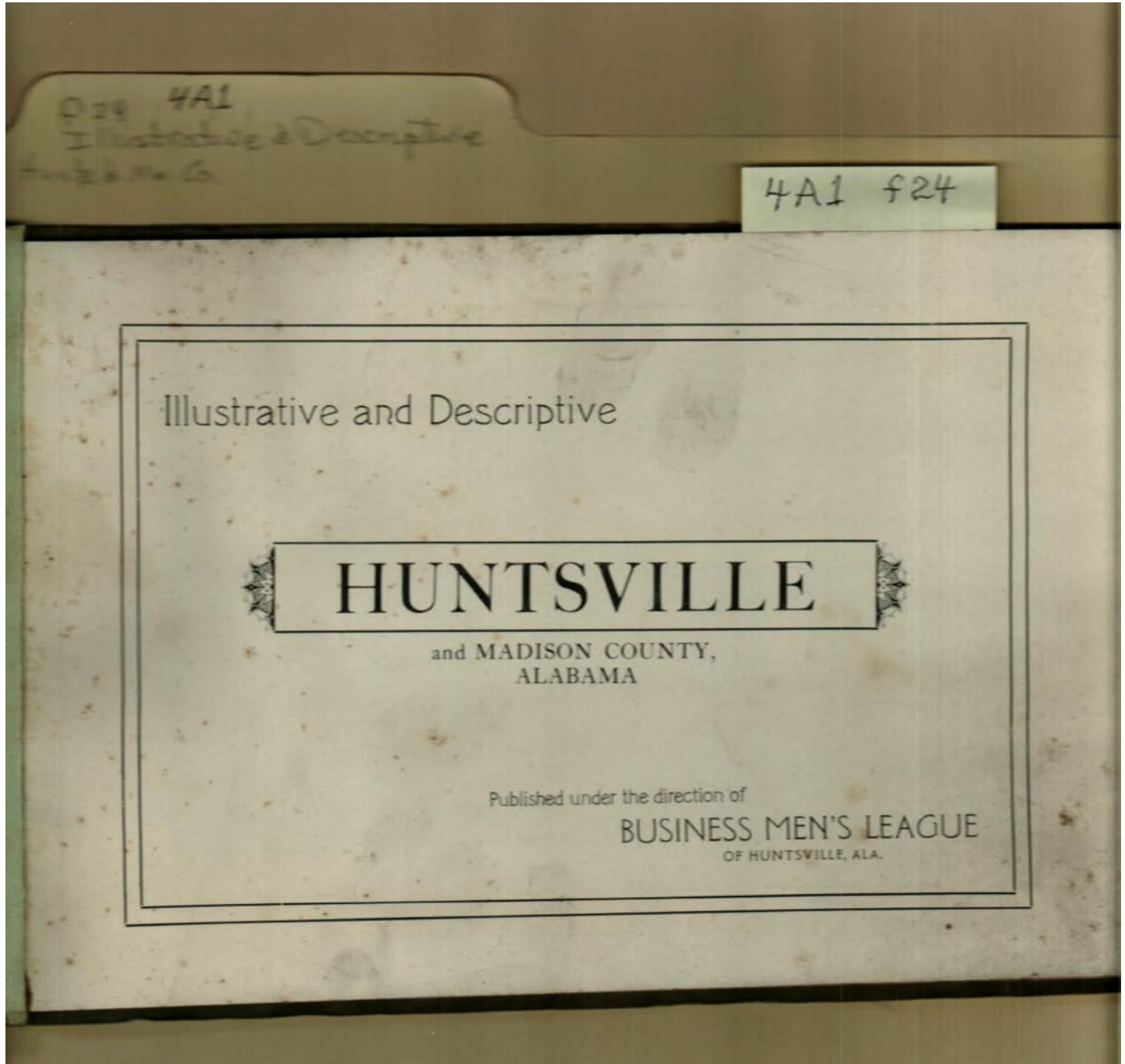
Dates:

before 1908

Frances Cabaniss Roberts Collection: Series 4, Subseries A, Box 1, Folder 24

Illustrative & Descriptive Huntsville & Madison County, circa 1910 - Early Huntsville Life and Memorabilia

Image 7 r04a01-24-000-0008 [Contents](#) [Index](#) [About](#)



Names:

Business Men's
League

Places:

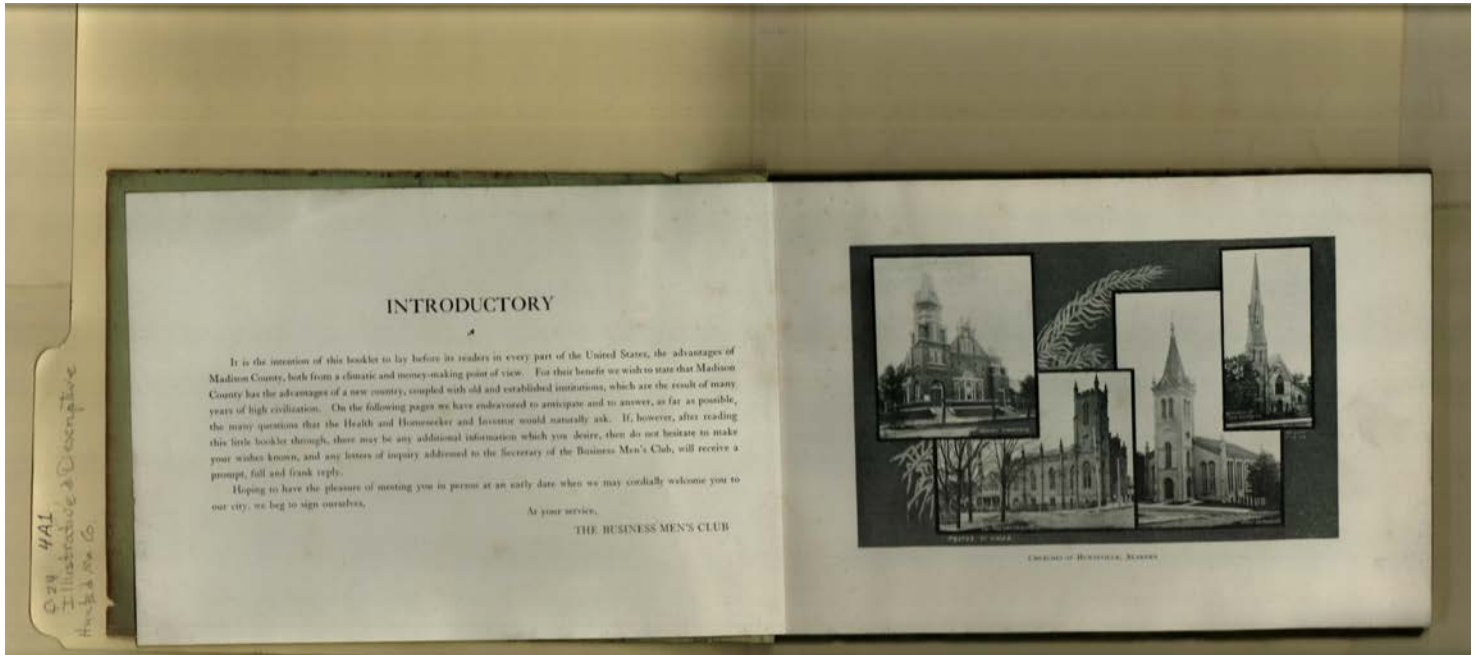
Huntsville, Madison
County, AL

Types:

brochure

Dates:

before 1908



Names:

Introduction

Local Churches

Places:

Huntsville, Madison

County, AL

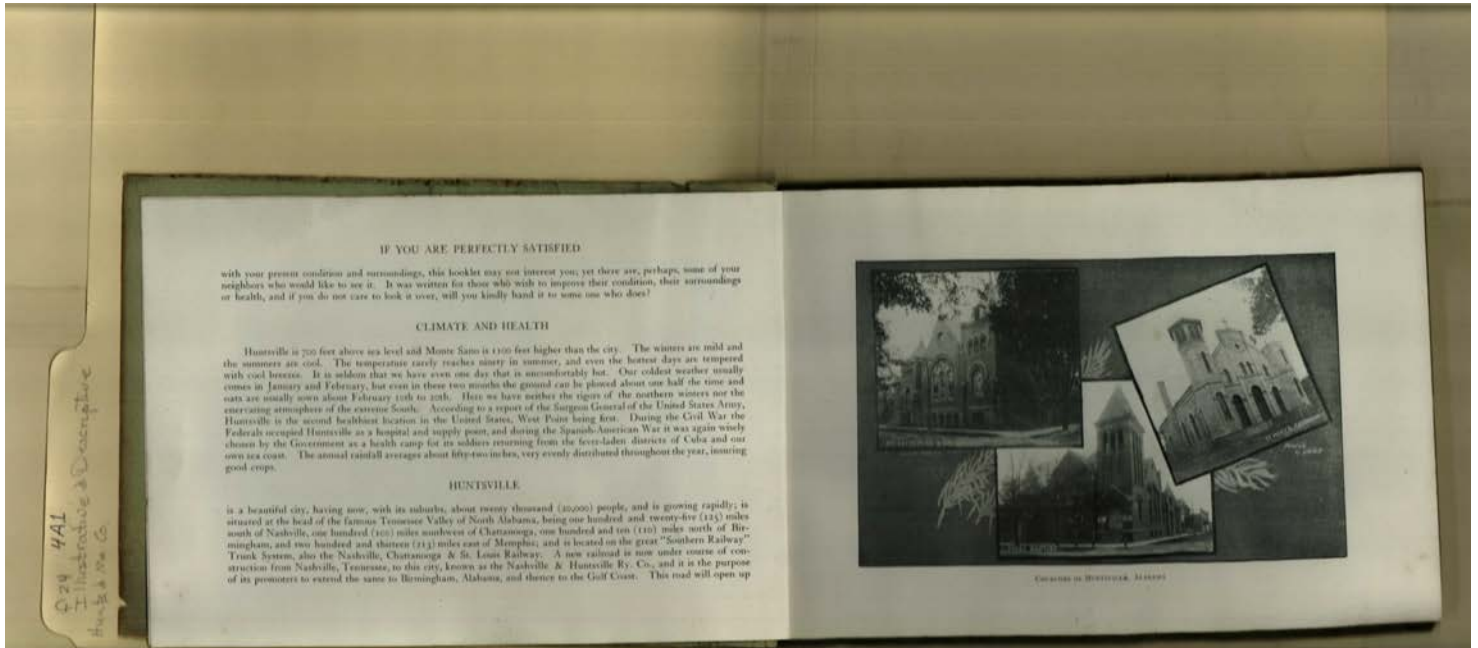
Types:

brochure

photo

Dates:

before 1908



Names:

Climate

Local Churches

Places:

Huntsville, Madison
County, AL

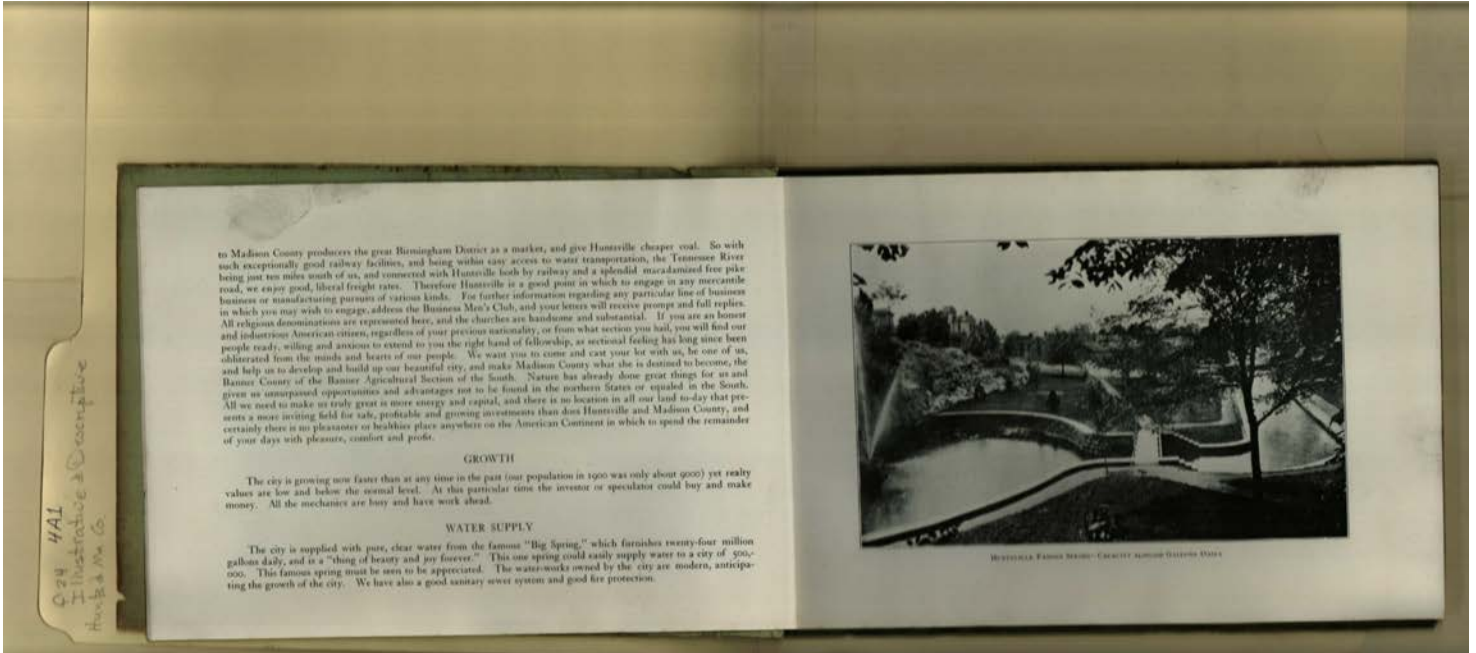
Types:

brochure

photo

Dates:

before 1908



Names:

Big Spring

Water Supply

Places:

Huntsville, Madison
County, AL

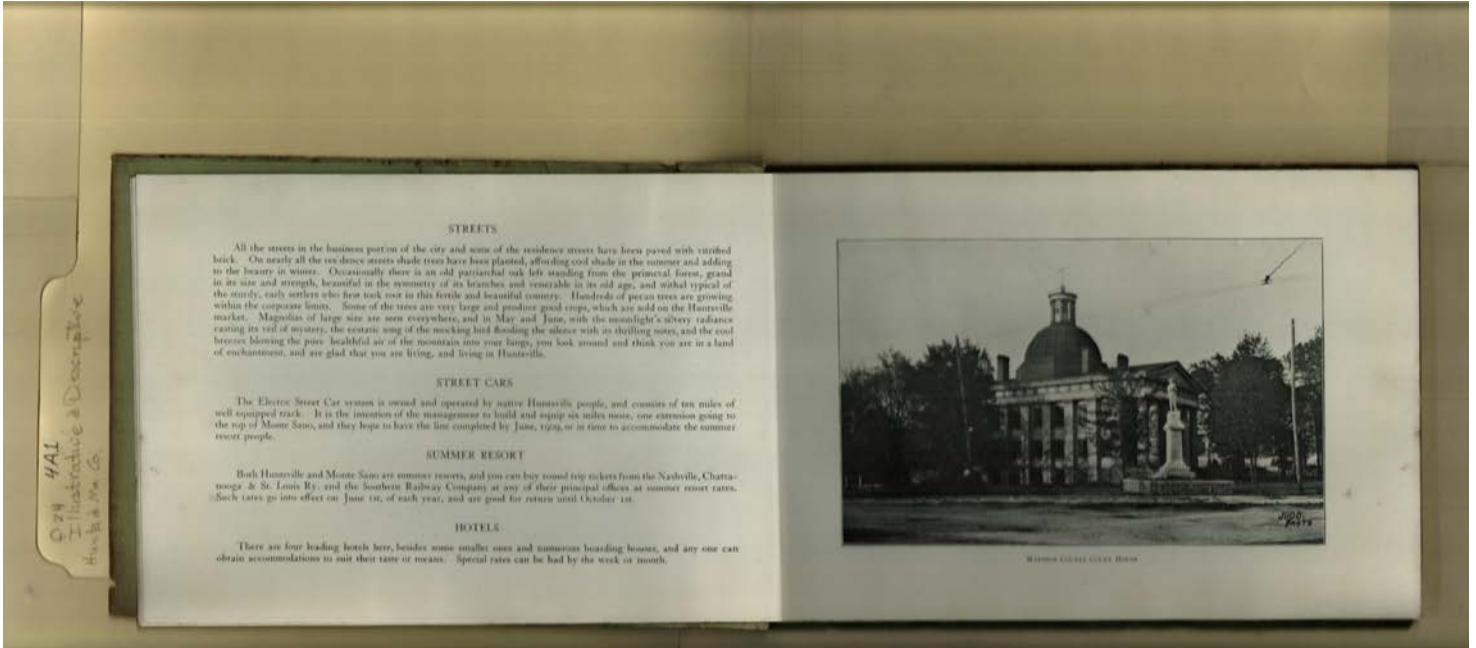
Types:

brochure

photo

Dates:

before 1908



Names:

Court House

Streets and Hotels

Places:

Huntsville, Madison
County, AL

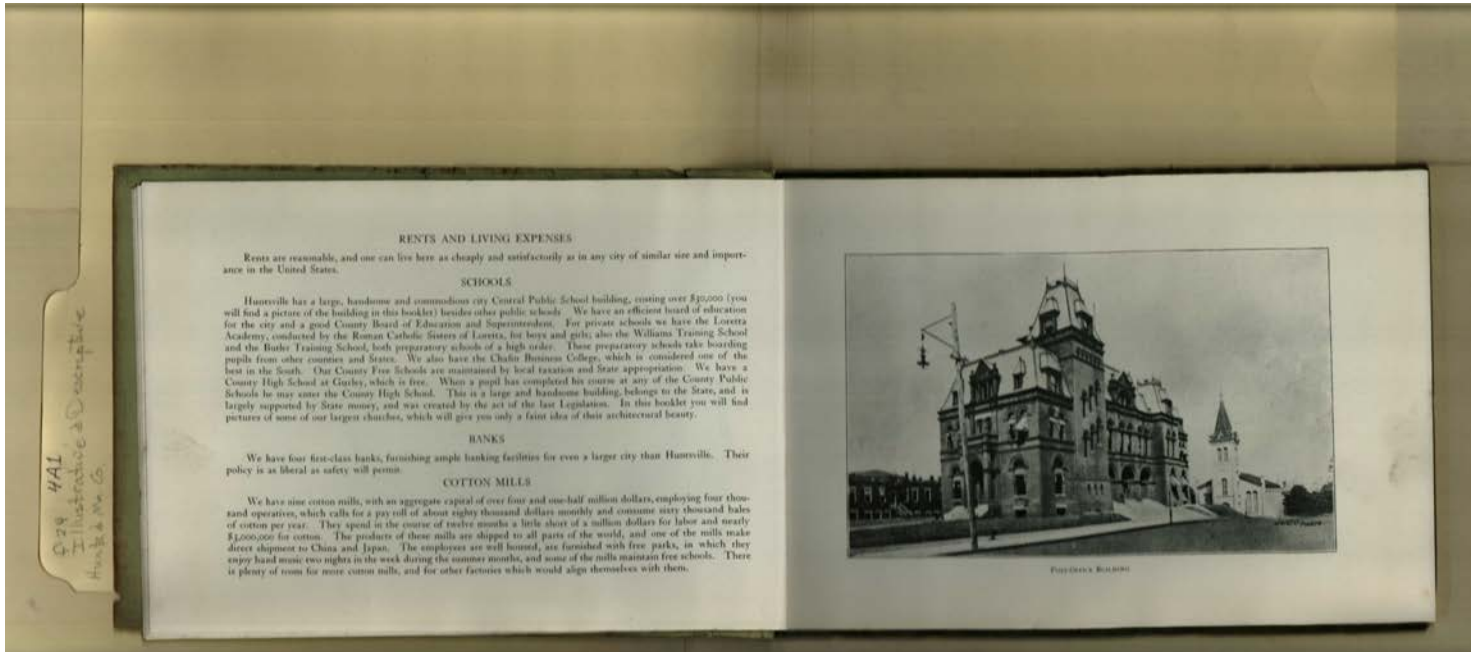
Types:

brochure

photo

Dates:

before 1908



Names:

Federal Post Office

Schools and Mills

Places:

Huntsville, Madison

County, AL

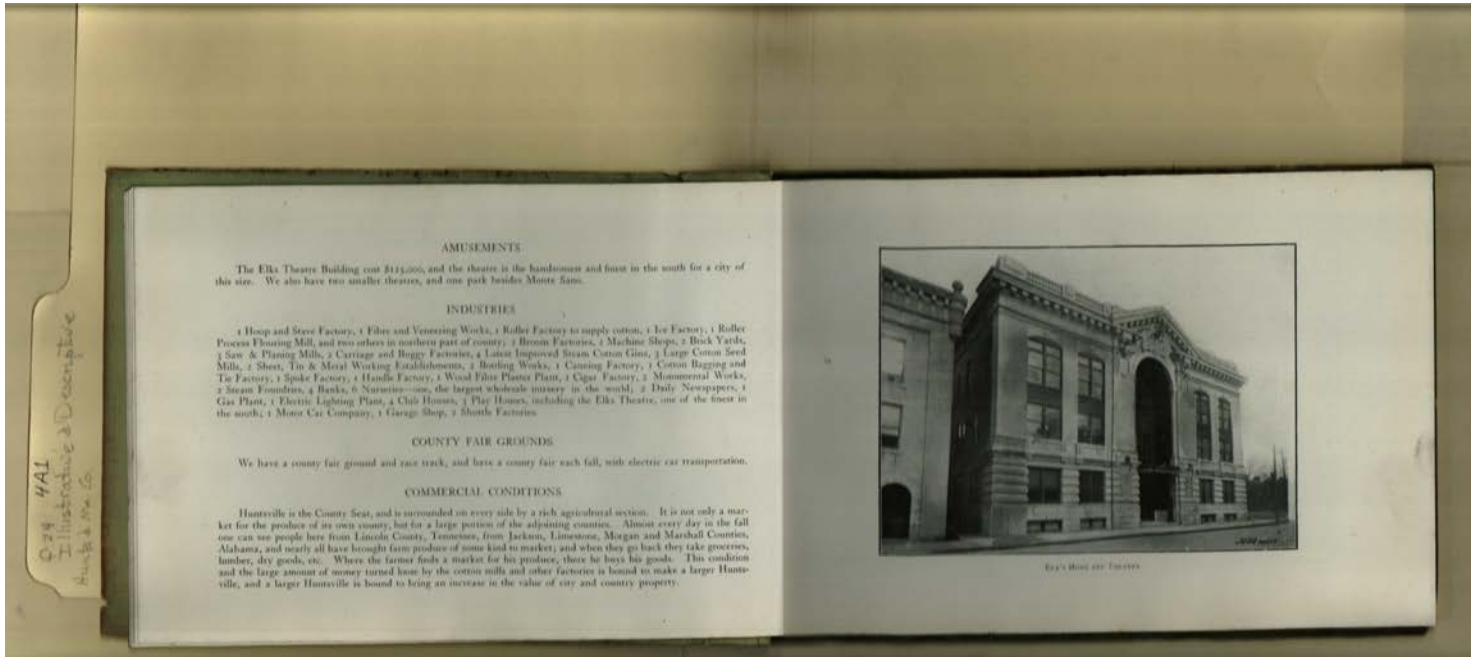
Types:

brochure

photo

Dates:

before 1908



Names:

Elks Lodge

Industries

Places:

Huntsville, Madison
County, AL

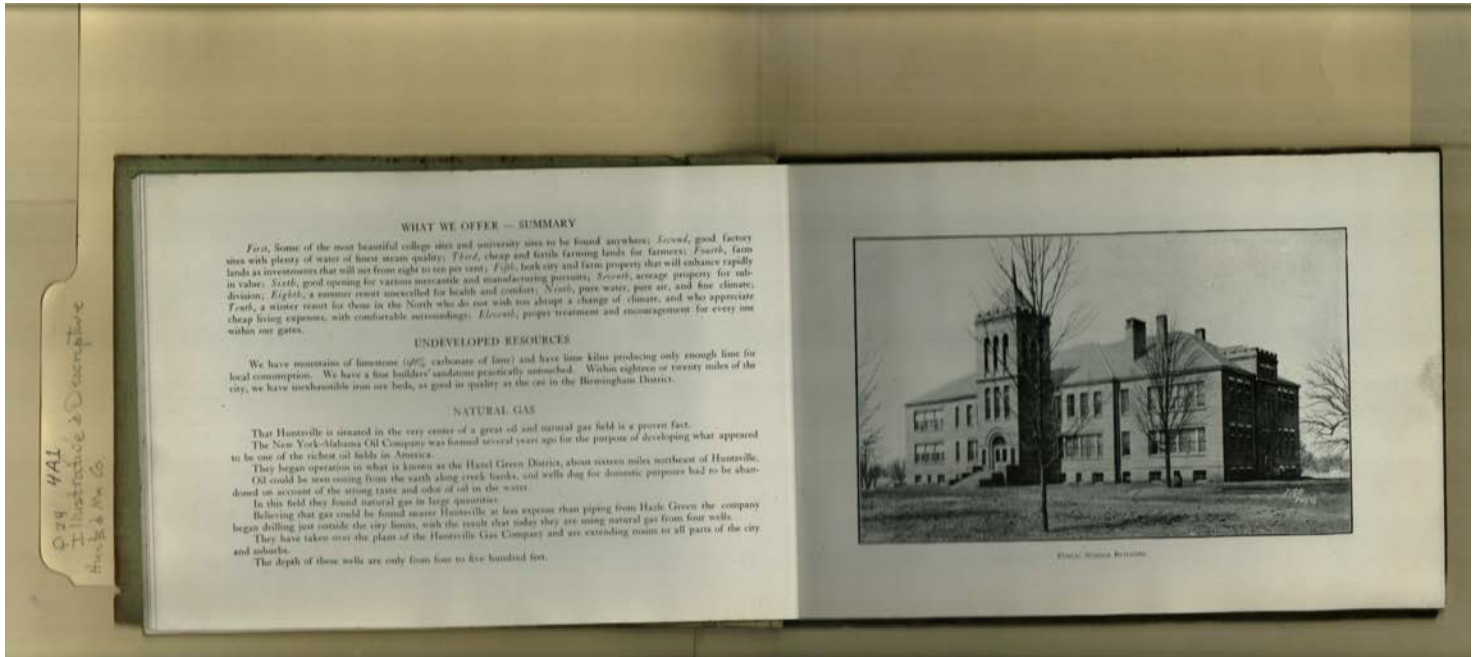
Types:

brochure

photo

Dates:

before 1908



Names:

Public School
Building

Resources

Places:

Huntsville, Madison
County, AL

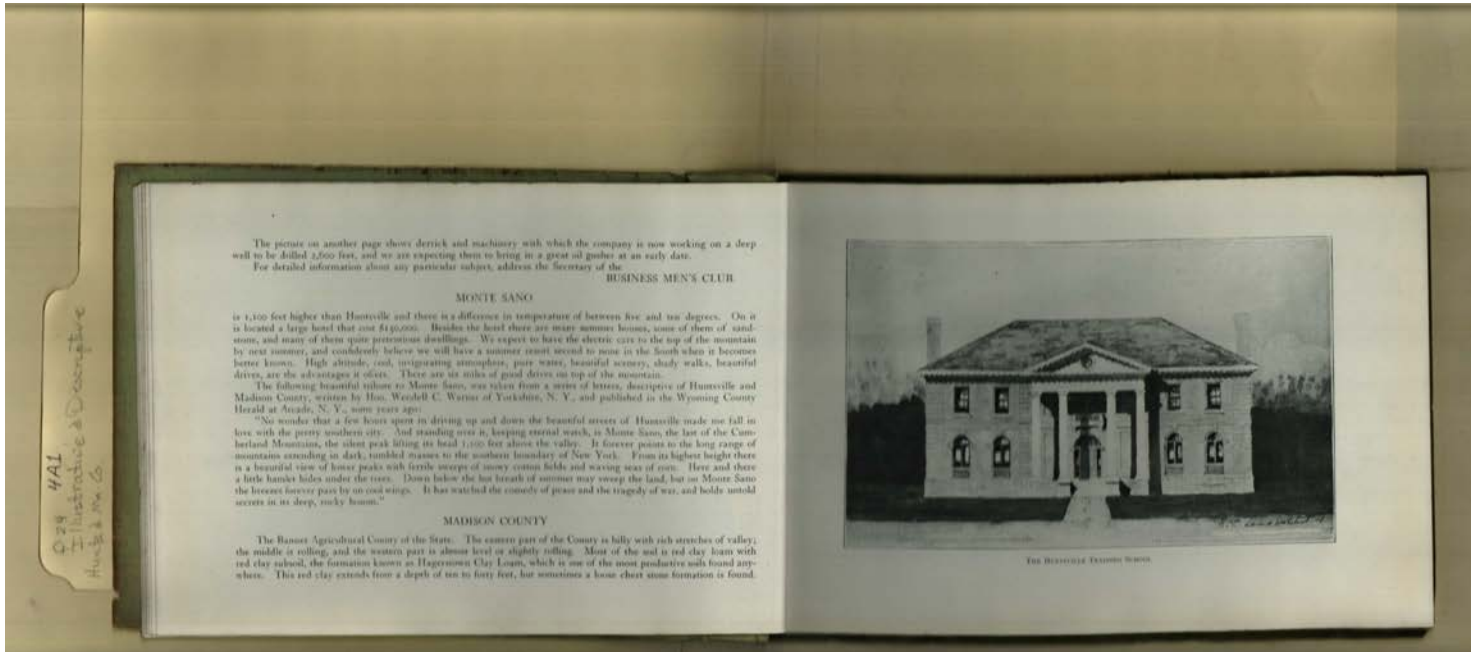
Types:

brochure

photo

Dates:

before 1908



Names:

Huntsville Training School Monte Sano

Places:

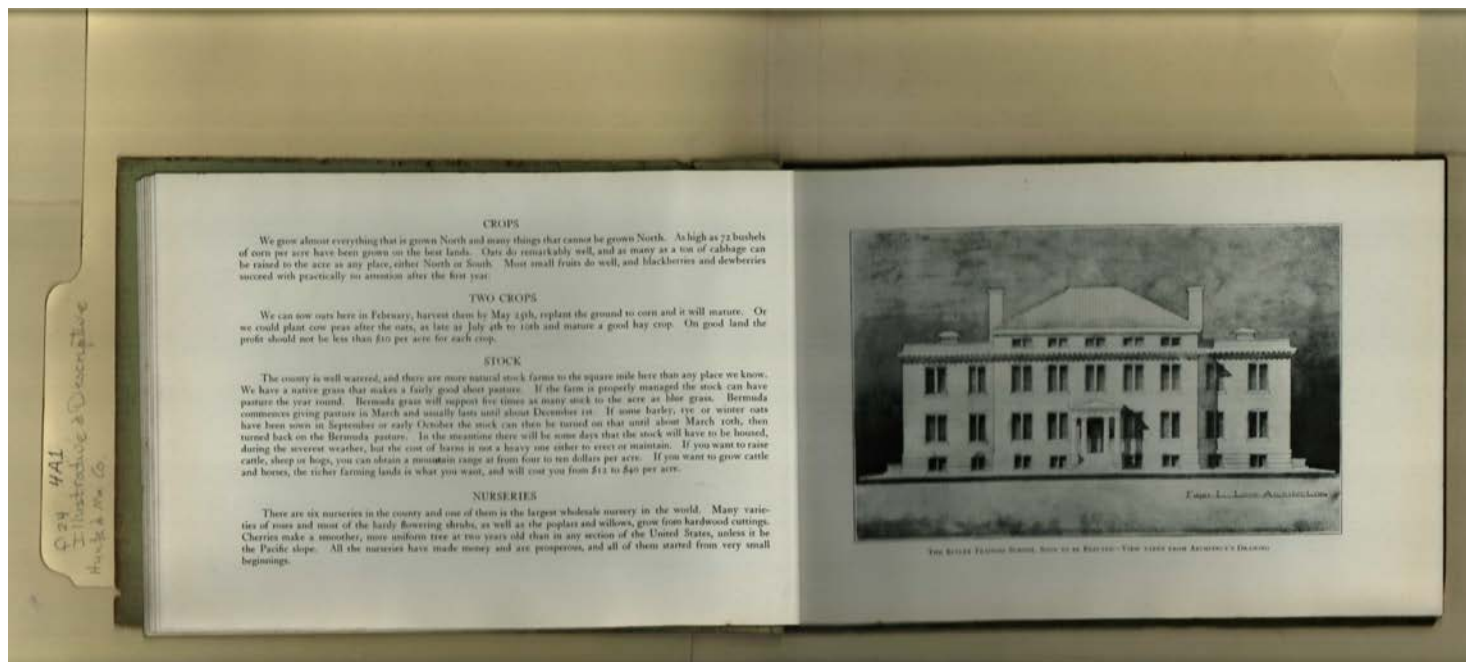
Huntsville, Madison County, AL

Types:

brochure photo

Dates:

before 1908



Names:

Butler Training School Livestock
 Nurseries

Places:

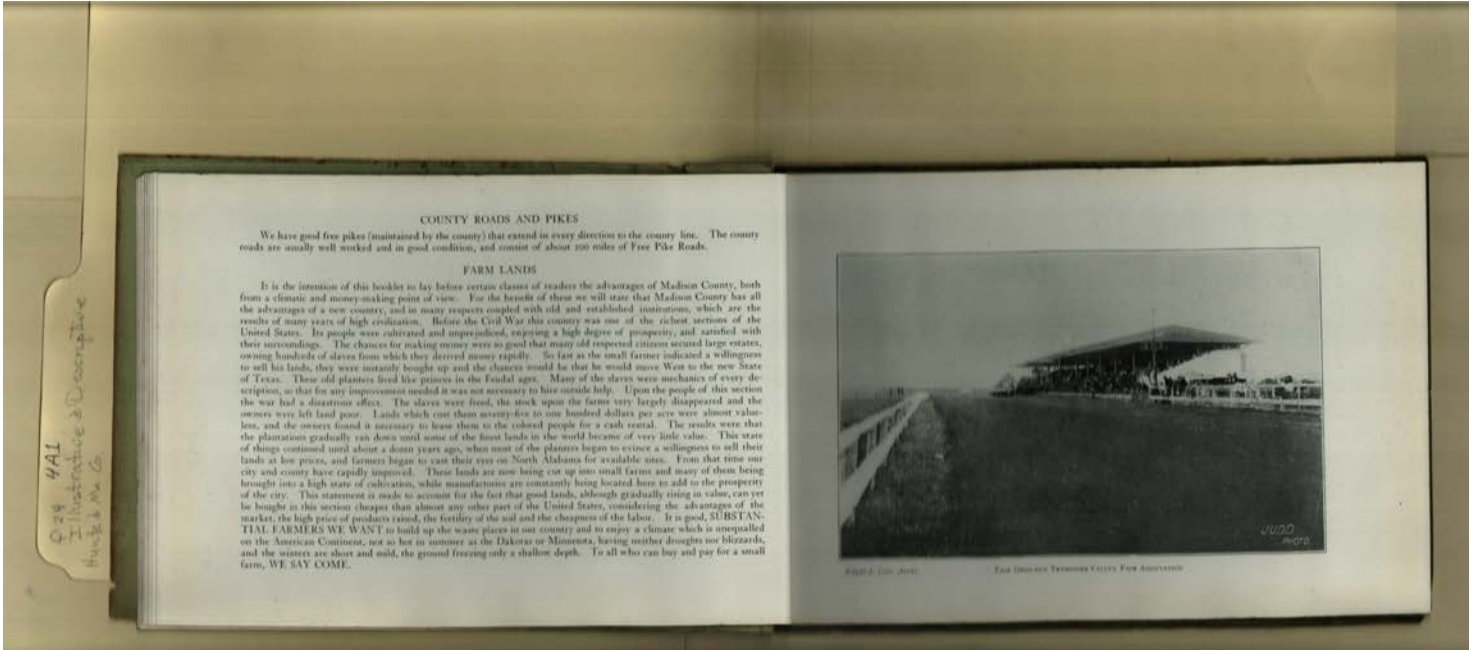
Huntsville, Madison
County, AL

Types:

brochure photo

Dates:

before 1908



Names:

Fair Grounds

Farm Land

Places:

Huntsville, Madison
County, AL

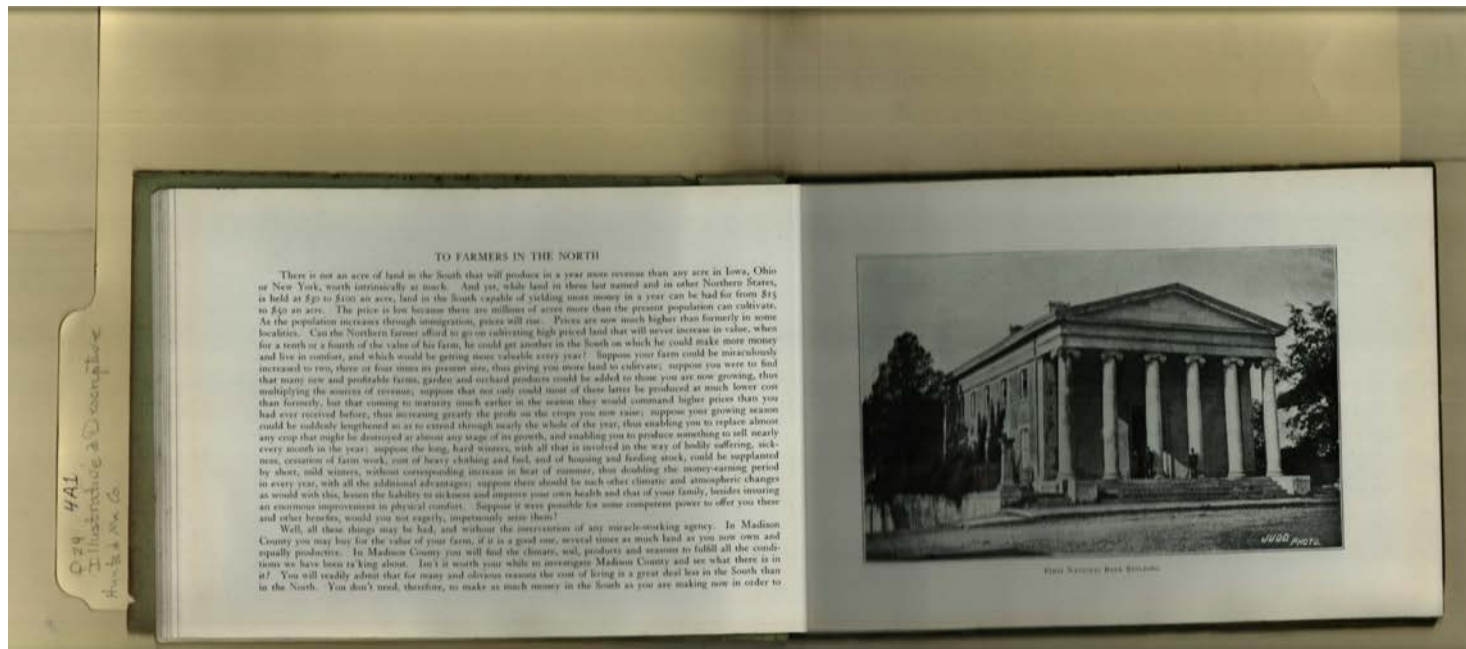
Types:

brochure

photo

Dates:

before 1908



Names:

First National Bank
 Building

Note to Northern
 Farmers

Places:

Huntsville, Madison
 County, AL

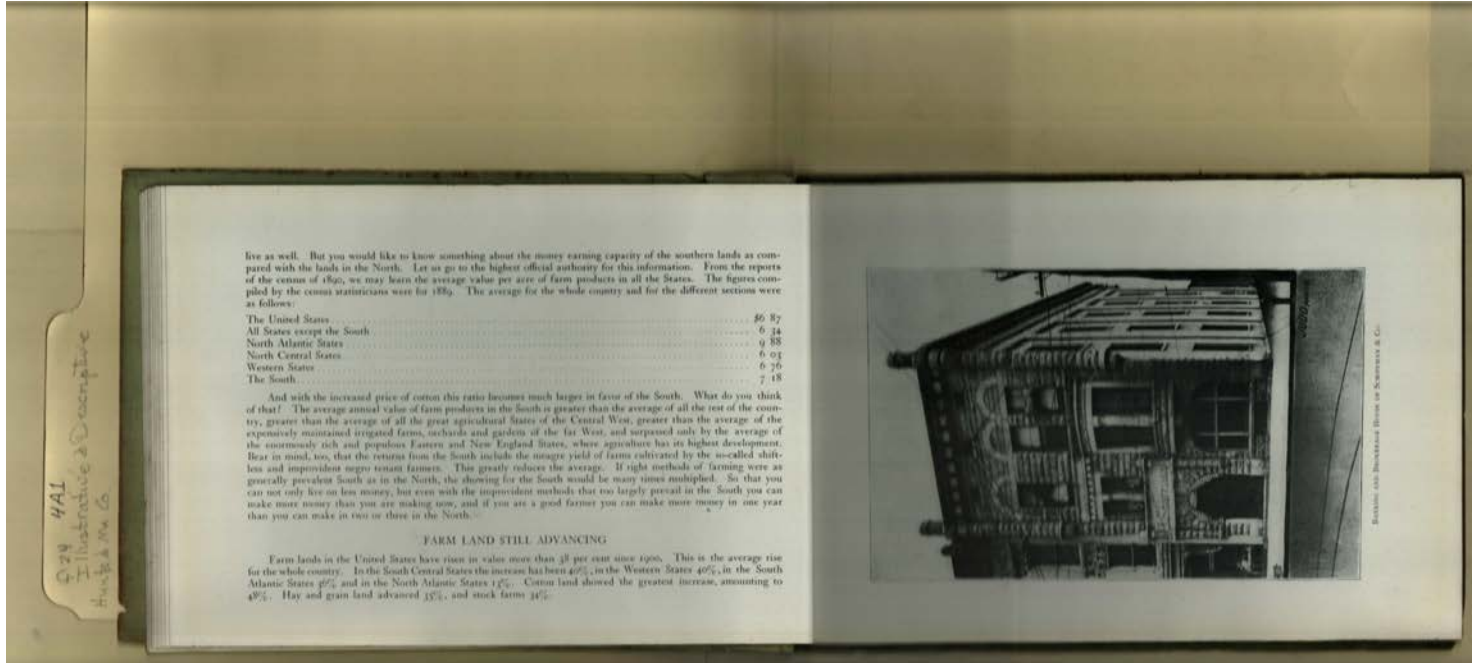
Types:

brochure

photo

Dates:

before 1908



Names:

Farm Land Numbers Shiffman Building

Places:

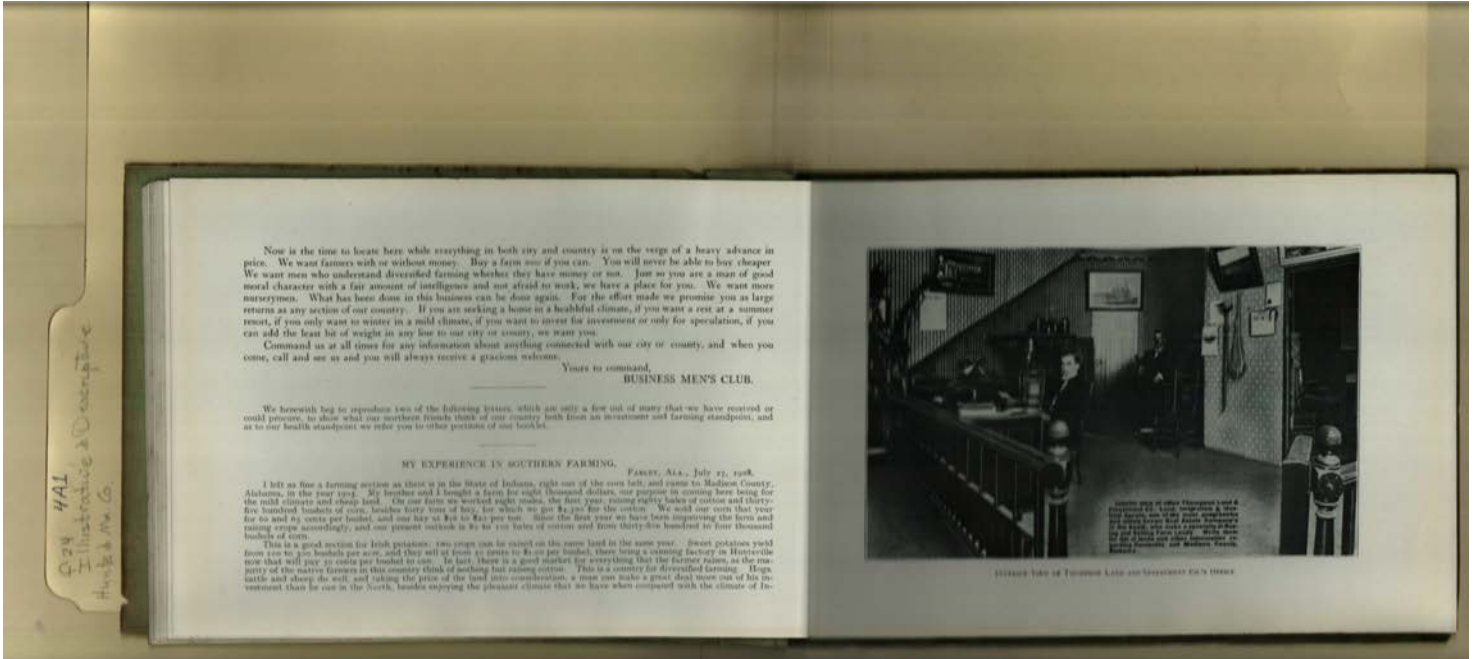
Huntsville, Madison
 County, AL

Types:

brochure photo

Dates:

before 1908



Names:

Business Men's Club

Thompson Land Office

Places:

Huntsville, Madison County, AL

Types:

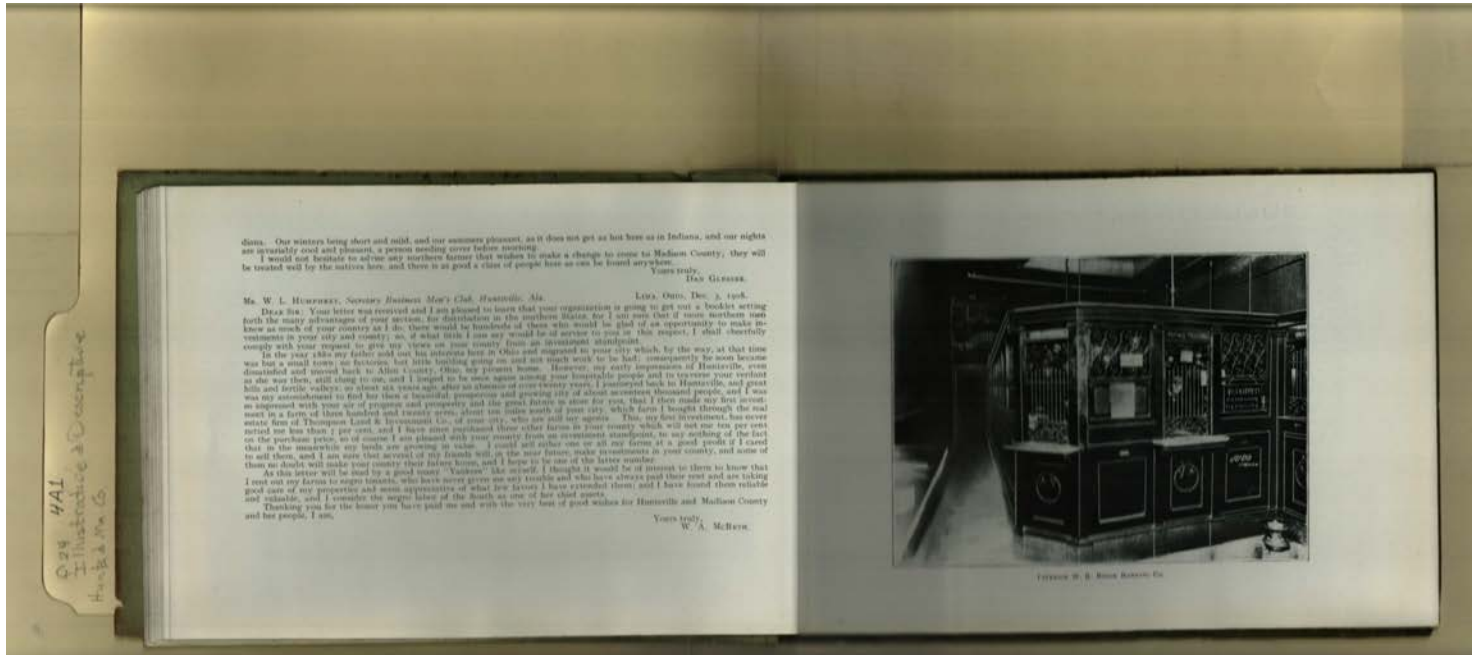
brochure

photo

Dates:

before 1908

Frances Cabaniss Roberts Collection: Series 4, Subseries A, Box 1, Folder 24
 Illustrative & Descriptive Huntsville & Madison County, circa 1910 - Early Huntsville Life and Memorabilia
 Image 21 r04a01-24-000-0022 [Contents](#) [Index](#) [About](#)



Names:

Humphrey, W. L.
 Secretary

McBeth, W. A., new
 farmer

W. R. Rison Banking
 Co.

Places:

Huntsville, Madison
 County, AL

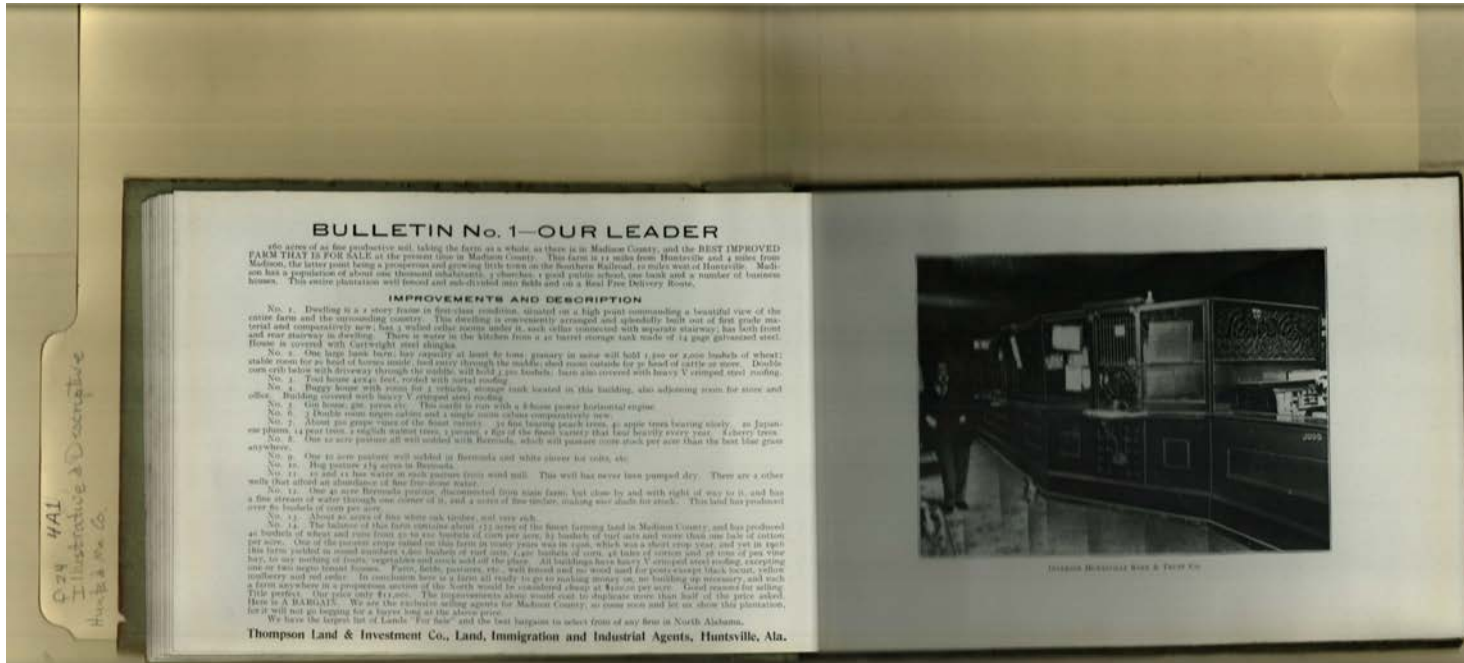
Types:

brochure

photo

Dates:

before 1908



BULLETIN No. 1—OUR LEADER

600 acres of fine productive soil, taking the farm as a whole as there is in Madison County, and the BEST IMPROVED FARM THAT IS FOR SALE at the present time in Madison County. This farm is 1 1/2 miles from Huntsville, and 4 miles from Madison, the latter point being a prosperous and growing city from the Southern Railroad, 15 miles west of Huntsville. Madison has a population of about one thousand inhabitants, 1 churches, 1 good public school, one bank and a number of business houses. This entire plantation well fenced and subdivided into fields and is a First Free Delivery Route.

IMPROVEMENTS AND DESCRIPTION

- No. 1. Dwelling is a 2 story frame in first-class condition, situated on a high point commanding a beautiful view of the entire farm and the surrounding country. This dwelling is conveniently arranged and splendidly built out of first grade material and comparatively new, has 3 wood cellars under it, each cellar connected with separate stairway, has both front and rear stairways in dwelling. There is water in the kitchen from a 20 barrel storage tank made of 14 gauge galvanized steel. House is covered with cutweight steel shingles.
- No. 2. One large bank barn, bay capacity at least 40 tons, granary in same will hold 1,000 or 2,000 bushels of wheat; stable room for 20 head of horses inside, feed entry through the middle shed room outside for 30 head of cattle or more. Double corn crib below with driveway through the middle, will hold 1,000 bushels; barn also covered with heavy V crimped steel roofing.
- No. 3. Tool house 40x40 feet, roofed with metal roofing.
- No. 4. Buggy house with room for 1 vehicle, storage tank located in this building, also adjoining room for auto and office. Building covered with heavy V crimped steel roofing.
- No. 5. Oil house, gas, parox etc. This outfit is run with a 8-horse power horizontal engine.
- No. 6. 1 Double room open cabinet and 1 single room cabinet completely new.
- No. 7. About 500 grape vines of the finest variety. 10 fine bearing peach trees, 20 apple trees bearing nicely, 20 Japanese plums, 14 pear trees, 2 English walnut trees, 2 pecans, 1 fig of the finest variety that bear heavily every year. 4 cherry trees.
- No. 8. One 20 acre pasture all well stocked with Bermuda, which will produce more stock per acre than the best blue grass anywhere.
- No. 9. One 20 acre pasture well stocked in Bermuda and white clover for cows, etc.
- No. 10. Hog pasture 2 1/2 acres in Bermuda.
- No. 11. 25 and 25 has water on each pasture from wind mill. This well has never been pumped dry. There are a other wells that afford an abundance of fine fire-dome water.
- No. 12. One 40 acre Bermuda pasture, disconnected from main farm, but close by and with right of way to it and has a fine stream of water through one corner of it, and a series of fine timber, making nice shade for stock. This land has produced over 40 bushels of corn per acre.
- No. 13. About 20 acres of fine white oak timber, not very rich.
- No. 14. The balance of this farm occupies about 2 1/2 acres of the finest farming land in Madison County, and has produced 40 bushels of wheat and more from 40 to 500 bushels of corn per acre, 1 1/2 bushels of red clover and more than one ton of cotton per acre. One of the present crops raised on this farm in many years was in 1908, which was a short crop year, and yet in 1909 this farm yielded in round numbers 1,000 bushels of red clover, 1,000 bushels of corn, 40 tons of cotton and 20 tons of pea vine hay, to say nothing of such vegetables and stock sold off the place. All buildings have heavy V crimped steel roofing, excepting one or two negro tenant houses. Pines, larches, poplars, etc., well fenced and no wood used for fence except black locust, yellow sulphury and red cedar. In conclusion here is a farm all ready to go on making money on, no building up necessary, and such a farm anywhere in a prosperous section of the South would be considered cheap at \$25,000 per acre. Good ground for selling this property. Our price only \$12,000. The improvements alone would cost to duplicate more than half of the price asked. Here is A BARGAIN. We are the exclusive selling agents for Madison County, so come soon and let us show this plantation, for it will not go begging for a buyer long at the above price.

We have the largest lot of Land, "For Sale" and the best bargains in what from of any State in North Alabama.
Thompson Land & Investment Co., Land, Immigration and Industrial Agents, Huntsville, Ala.



THOMPSON INDUSTRIAL BARN & TOOL SHED

Names:

Thompson Land Office

Places:

Huntsville, Madison County, AL

Types:

advertisement

Dates:

before 1908



Names:

Bradley & Conner,
 Real Estate

Jefferson Street

Places:

Huntsville, Madison
 County, AL

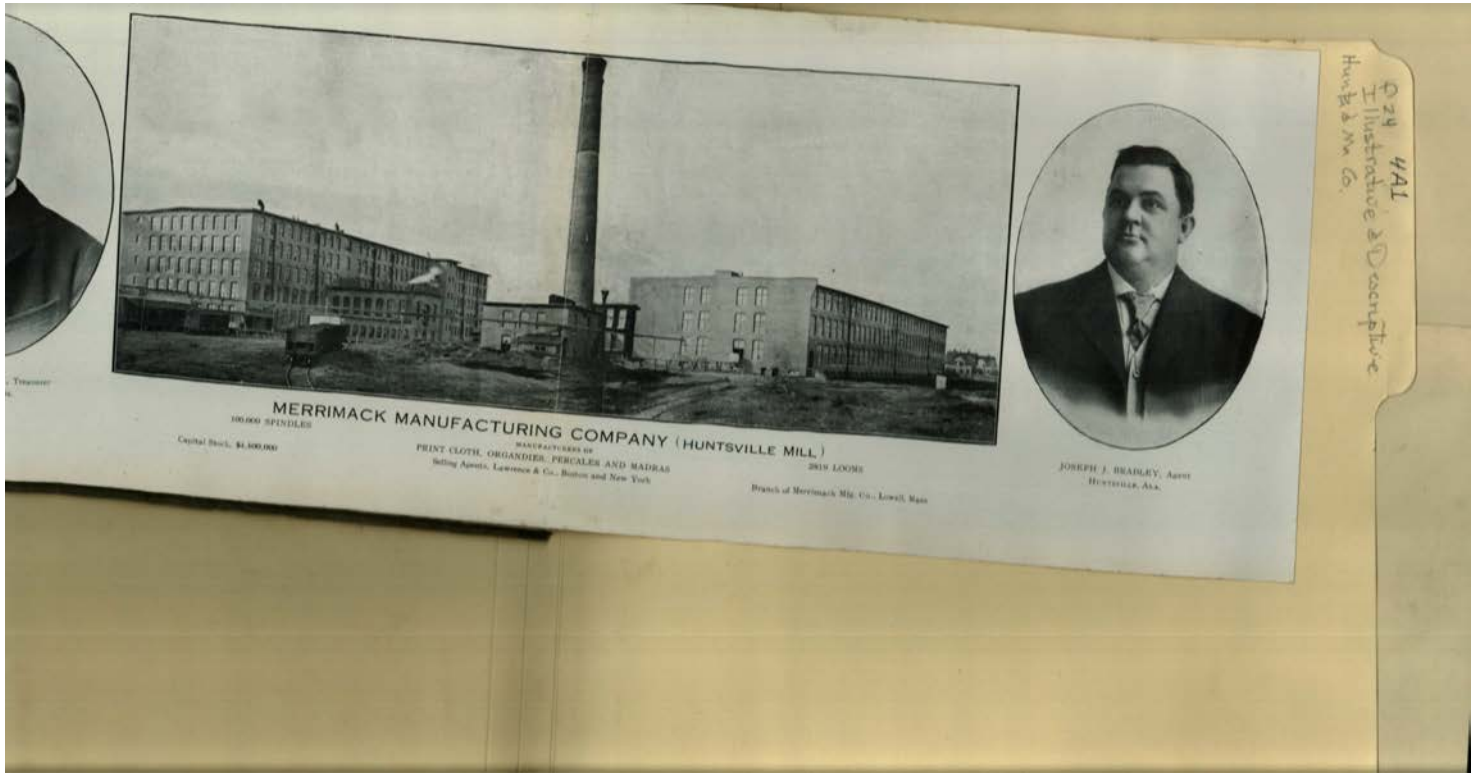
Types:

advertisement

photo

Dates:

before 1908



Names:

Bradley, Joseph J.,
agent

Merrimack
Manufacturing Co.

Places:

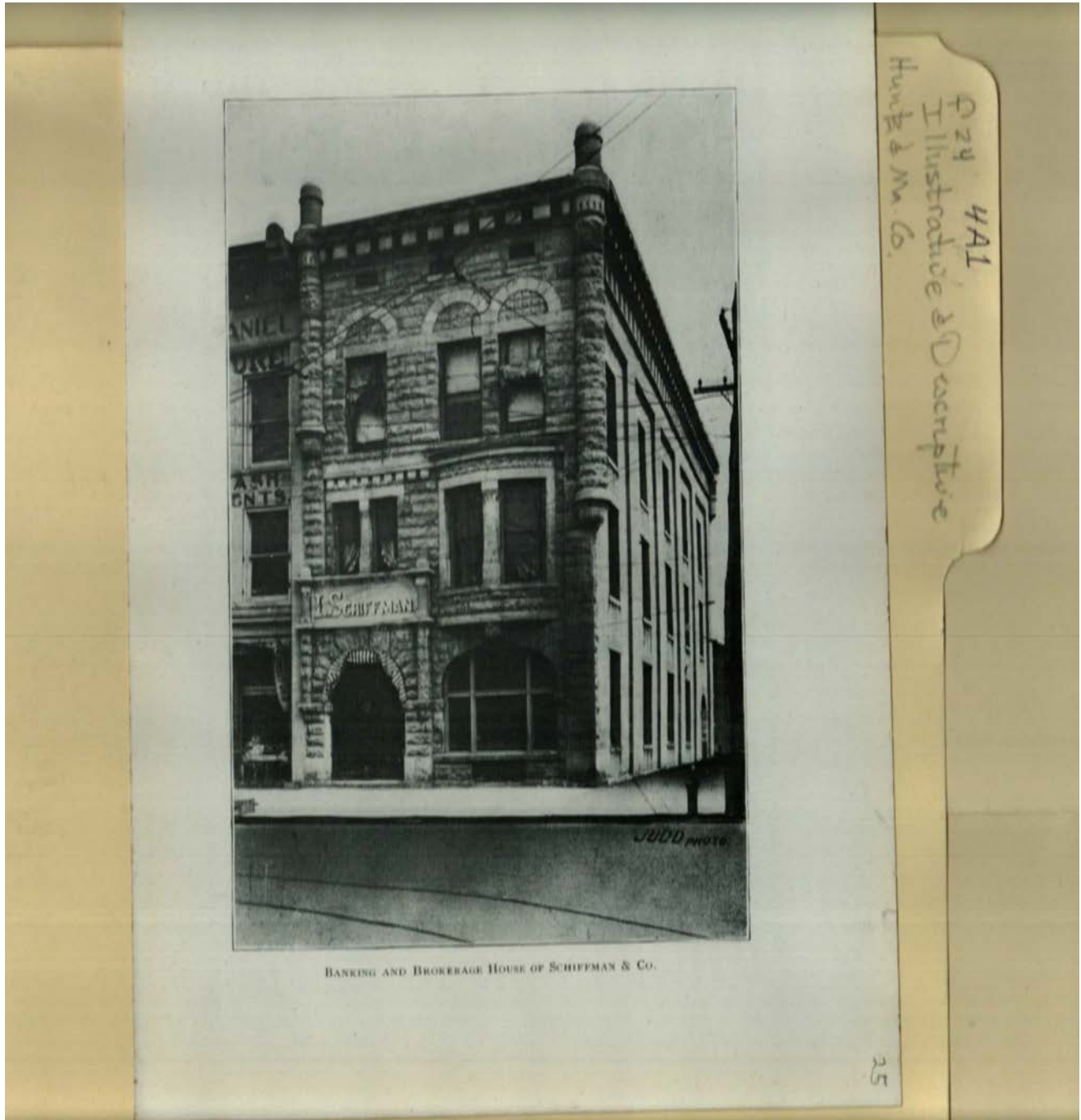
Huntsville, Madison
County, AL

Types:

photo

Dates:

before 1908



Names:

Shiffman Banking
Building

Places:

Huntsville, Madison
County, AL

Types:

photo

Dates:

before 1908



Edgar L. Love, Archt.

TERRY BRO'S CO. DEPARTMENT STORE

Q 24 4A1
Illustrative & Descriptive
Hunt & M. Co.

Names:

Terry Brother's
Department Store

Places:

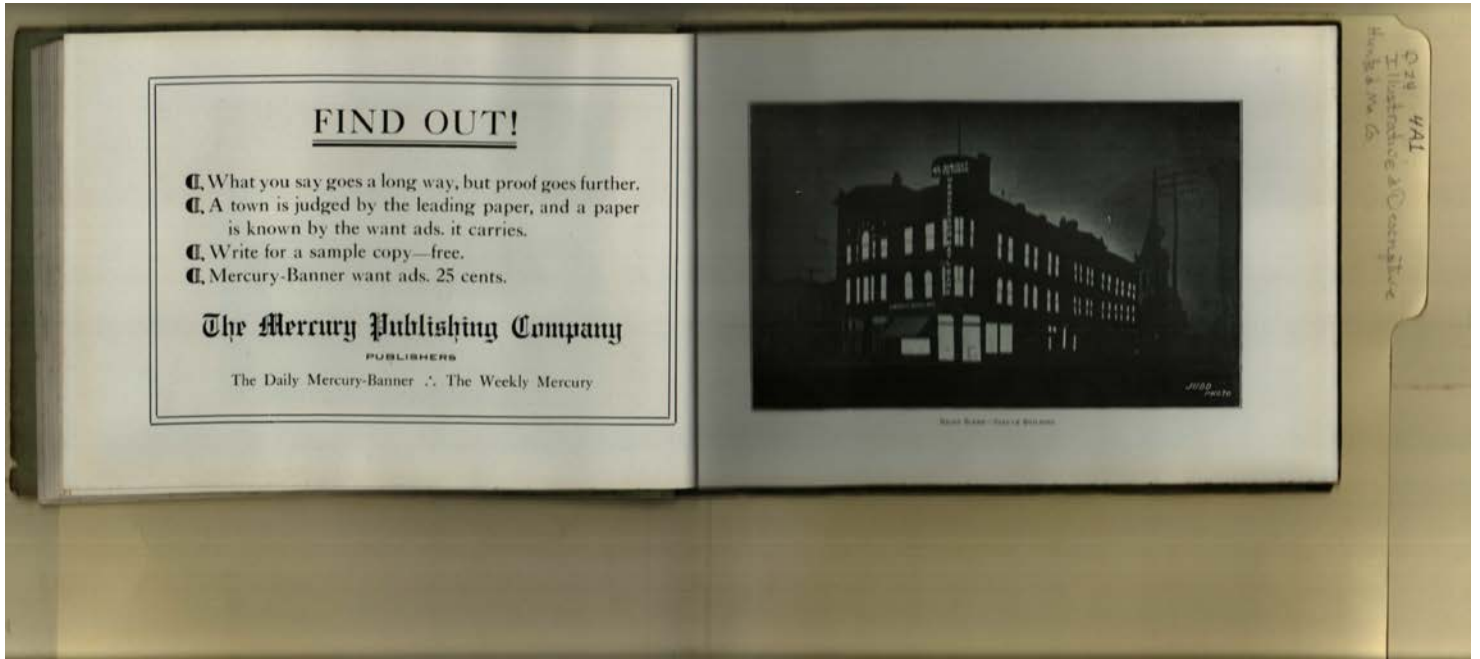
Huntsville, Madison
County, AL

Types:

photo

Dates:

before 1908



Names:

Mercury Publishing
Co.

Struve Building

Places:

Huntsville, Madison
County, AL

Types:

advertisement

photo

Dates:

before 1908

Frances Cabaniss Roberts Collection: Series 4, Subseries A, Box 1, Folder 24

Illustrative & Descriptive Huntsville & Madison County, circa 1910 - Early Huntsville Life and Memorabilia

Image 28 r04a01-24-000-0029 [Contents](#) [Index](#) [About](#)



Names:

Cotton Sale Day at
Square

Monte Sano scenes

Places:

Huntsville, Madison
County, AL

Types:

photo

Dates:

before 1908

Frances Cabaniss Roberts Collection: Series 4, Subseries A, Box 1, Folder 24

Illustrative & Descriptive Huntsville & Madison County, circa 1910 - Early Huntsville Life and Memorabilia

Image 29 r04a01-24-000-0030 [Contents](#) [Index](#) [About](#)



Names:

Adams Avenue scene

Humes, Milton
residence

Places:

Huntsville, Madison
County, AL

Types:

photo

Dates:

before 1908



Names:

Echols, W. H., Major,
residence

Hunt, Ben P.
residence

Places:

Huntsville, Madison
County, AL

Types:

photo

Dates:

before 1908

Frances Cabaniss Roberts Collection: Series 4, Subseries A, Box 1, Folder 24

Illustrative & Descriptive Huntsville & Madison County, circa 1910 - Early Huntsville Life and Memorabilia

Image 31 r04a01-24-000-0032 [Contents](#) [Index](#) [About](#)



Names:

Melrose Place,

Newsom, A. W.
Residence

Oaklawn

Webster, F. W.,
residence

Places:

Huntsville, Madison
County, AL

Types:

photo

Dates:

before 1908

Q 24 4A1
Illustrative & Descriptive
Hunts & Ma Co.

32

LET US PUT YOU IN TOUCH WITH MADISON COUNTY

Our 1909 Land List will be furnished on request, and is filled with such bargains as the following:

No. 162—800 acres of splendid land, 11 miles from Huntsville and 1 mile from a good railroad town of about 800 people, with splendid graded school and four churches, on good pike road. Here is one of the most desirable farms in the neighborhood. The land lays level and is all tillable except about 100 acres, which runs up on the slope of a hill, making splendid pasture land, there being a spring of running water on it. Improvements consist of a good two-story house with seven rooms in good repair. Good barn and other buildings. Fine well of freestone water. 10 tenant houses. In good neighborhood, being surrounded by thrifty farmers, and is an ideal farm for cotton, grain and grasses of all kinds. This farm can be bought as a whole for \$25.00 per acre, or we can sell 400 acres off of the front end, along the pike, with all the improvements on, for \$35 per acre. Here is a great bargain. Come and see for yourself.

No. 205—320 acres of nice level laying land, 2 miles from Madison, a thrifty little town of about 800 people, four churches and 10 business houses. Surrounded by a splendid community of people. This farm has 220 acres of tillable land, balance in timber, with a running stream of water and a never failing spring that comes up to about the middle of the place. Here is the making of a fine stock and grain farm. Improvements consist of one three-room frame dwelling house, nearly new, and several tenant houses. The Southern Rail-

way cuts off about 20 acres at one corner of the farm. This is a snap at the price for which it is offered, at \$20.00 per acre.

No. 221—400 acres of land on the banks of the Tennessee River about 12 miles from Huntsville. 65 acres of first river bottom land, balance good red soil just rolling enough to drain well. All under cultivation except the orchard, which consists of about twenty thousand bearing fruit trees, peaches, pears, apples and plum. This is a splendid orchard and from the fact that it is on the bank of the river, the peach crop is seldom a failure. Improvements consist of one eight-room dwelling with large cellar, in first-class condition, good barn, cotton house, crib and other out buildings. Good poultry yard and house. Eight tenant houses and several good wells. There is a boat landing on the farm which affords convenient shipping facilities. This is a bargain, at \$10,000.00.

No. 201—236 acres of nice level laying land, five miles from Huntsville, on two good roads, one pike and one dirt road. Situated in a splendid neighborhood. Good school house on the place. Fine young orchard now bearing, consisting of plums, peaches, apples and pears. There has been at least seventy-five bushels of plums in this orchard this year. Big hay shed 42x50. Good barn 60 feet square, with cribs and granary in it. Good six-room dwelling nearly new, and kitchen attached. Two good wells of water, one at the barn and one at the house. Good pumps in both. Two tenant houses and chicken house and other outbuildings. This farm is subdivided into five fields. Can be sold as a whole or in blocks to suit purchaser. Price, \$35.00 per acre.

BRADLEY & CONNER, Real Estate

Names:

Bradley & Conner,
Real Estate

Places:

Huntsville, Madison
County, AL

Types:

advertisement

Dates:

before 1908



Names:

Garth, W. F.,
residence

VanValkenburg, W.
R. residence

Places:

Huntsville, Madison
County, AL

Types:

photo

Dates:

before 1908

Frances Cabaniss Roberts Collection: Series 4, Subseries A, Box 1, Folder 24

Illustrative & Descriptive Huntsville & Madison County, circa 1910 - Early Huntsville Life and Memorabilia

Image 34 r04a01-24-000-0034 [Contents](#) [Index](#) [About](#)



Names:

Bierne, Jane, Miss,
residence

Hundley, O. R.
residence

Places:

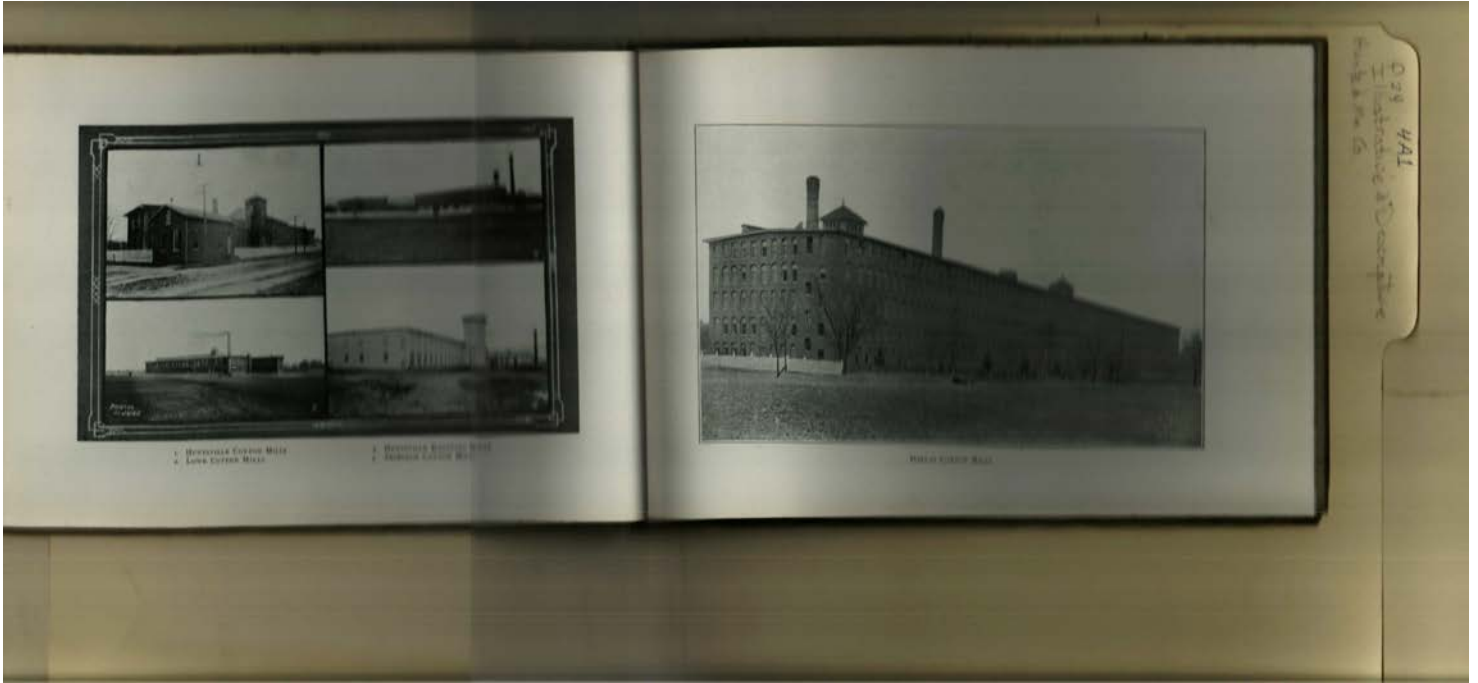
Huntsville, Madison
County, AL

Types:

photo

Dates:

before 1908



Names:

Dallas Cotton Mills

Huntsville Mills
buildings

Places:

Huntsville, Madison
County, AL

Types:

photo

Dates:

before 1908



Names:

Bradley, Joseph J.,
agent

Lyman, Herbert,
Merrimack

treasurer

Merrimack
Manufacturing Co.

Places:

Huntsville, Madison
County, AL

Types:

photo

Dates:

before 1908

Frances Cabaniss Roberts Collection: Series 4, Subseries A, Box 1, Folder 24

Illustrative & Descriptive Huntsville & Madison County, circa 1910 - Early Huntsville Life and Memorabilia

Image 37 r04a01-24-000-0037 [Contents](#) [Index](#) [About](#)



Names:

Coca Cola Bottling
Works

Huntsville Ice and
Coal

Places:

Huntsville, Madison
County, AL

Types:

photo

Dates:

before 1908

Frances Cabaniss Roberts Collection: Series 4, Subseries A, Box 1, Folder 24

Illustrative & Descriptive Huntsville & Madison County, circa 1910 - Early Huntsville Life and Memorabilia

Image 38 r04a01-24-000-0038 [Contents](#) [Index](#) [About](#)



Names:

Chase Nursery
Warehouse

Deep Well #21
Natural Gas

Places:

Huntsville, Madison
County, AL

Types:

photo

Dates:

before 1908

Frances Cabaniss Roberts Collection: Series 4, Subseries A, Box 1, Folder 24

Illustrative & Descriptive Huntsville & Madison County, circa 1910 - Early Huntsville Life and Memorabilia

Image 39 r04a01-24-000-0039 [Contents](#) [Index](#) [About](#)



Names:

Pecan Tree, Cruse
Variety

Wade, R. B.
Residence

Places:

Huntsville, Madison
County, AL

Types:

photo

Dates:

before 1908

Frances Cabaniss Roberts Collection: Series 4, Subseries A, Box 1, Folder 24

Illustrative & Descriptive Huntsville & Madison County, circa 1910 - Early Huntsville Life and Memorabilia

Image 40 r04a01-24-000-0040 [Contents](#) [Index](#) [About](#)



Names:

Cotton Picking near
Huntsville

Hertzler Farm Barn

Places:

Huntsville, Madison
County, AL

Types:

photo

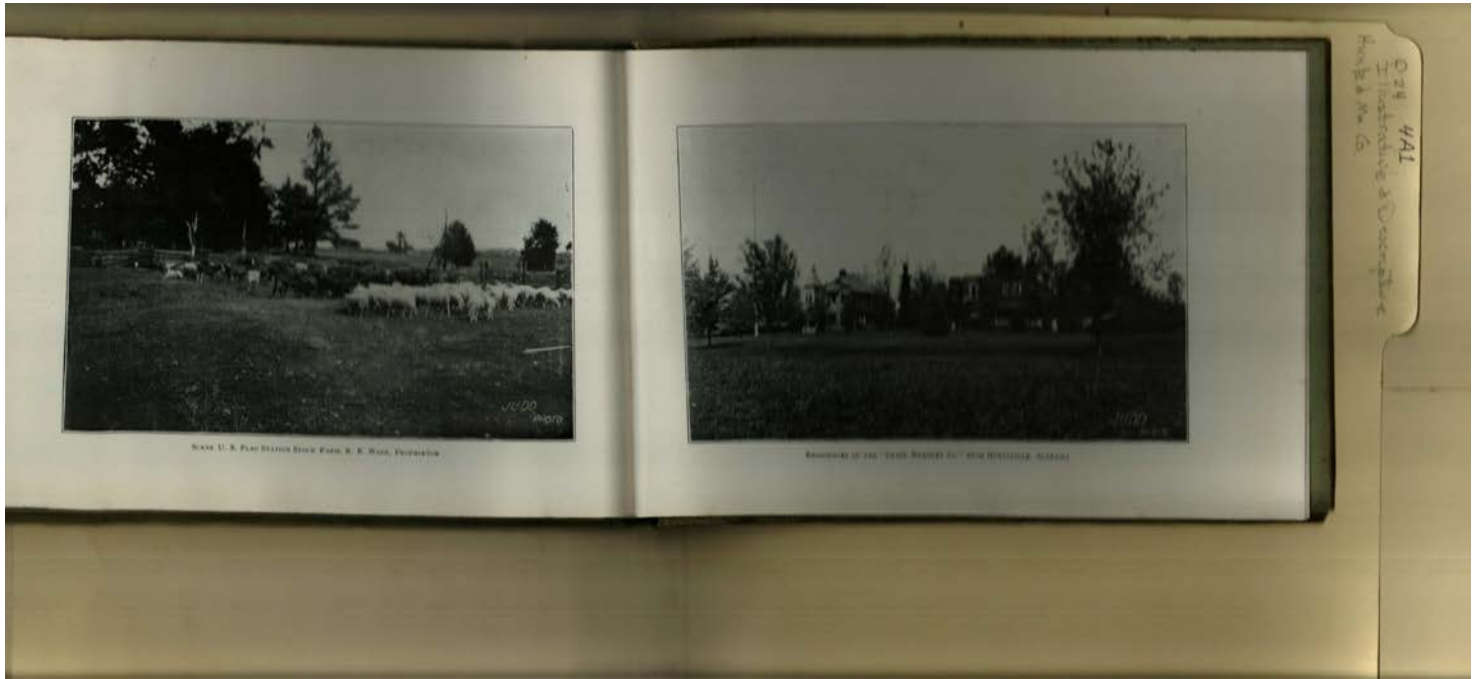
Dates:

before 1908

Frances Cabaniss Roberts Collection: Series 4, Subseries A, Box 1, Folder 24

Illustrative & Descriptive Huntsville & Madison County, circa 1910 - Early Huntsville Life and Memorabilia

Image 41 r04a01-24-000-0041 [Contents](#) [Index](#) [About](#)



Names:

Chase Nursery Co.
residences

Wade, R. B. Cattle
farm

Places:

Huntsville, Madison
County, AL

Types:

photo

Dates:

before 1908

Frances Cabaniss Roberts Collection: Series 4, Subseries A, Box 1, Folder 24

Illustrative & Descriptive Huntsville & Madison County, circa 1910 - Early Huntsville Life and Memorabilia

Image 42 r04a01-24-000-0042 [Contents](#) [Index](#) [About](#)



Names:

Green, C. C., farm residence

Hertzler, John , farm residence

Places:

Huntsville, Madison County, AL

Types:

photo

Dates:

before 1908

Frances Cabaniss Roberts Collection: Series 4, Subseries A, Box 1, Folder 24

Illustrative & Descriptive Huntsville & Madison County, circa 1910 - Early Huntsville Life and Memorabilia

Image 43 r04a01-24-000-0043 [Contents](#) [Index](#) [About](#)



Names:

Bradley, J. J., farm
residence

Bradley, Joseph J.,
residence

Places:

Huntsville, Madison
County, AL

Types:

photo

Dates:

before 1908

Frances Cabaniss Roberts Collection: Series 4, Subseries A, Box 1, Folder 24

Illustrative & Descriptive Huntsville & Madison County, circa 1910 - Early Huntsville Life and Memorabilia

Image 44 r04a01-24-000-0044 [Contents](#) [Index](#) [About](#)



Names:

Moss, Jesse F., Mrs
Orchard Place

Patton, R. A.
residence

Places:

Huntsville, Madison
County, AL

Types:

photo

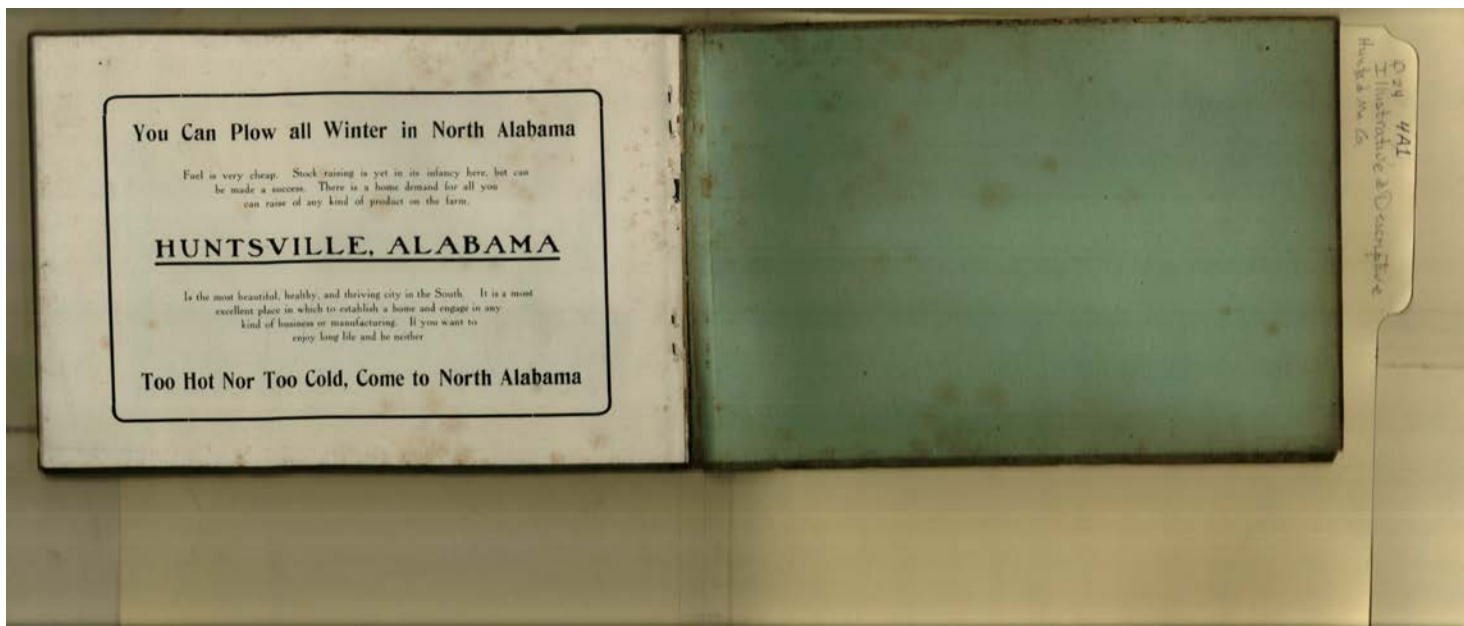
Dates:

before 1908

Frances Cabaniss Roberts Collection: Series 4, Subseries A, Box 1, Folder 24

Illustrative & Descriptive Huntsville & Madison County, circa 1910 - Early Huntsville Life and Memorabilia

Image 45 r04a01-24-000-0045 [Contents](#) [Index](#) [About](#)



Names:

Come to North
Alabama

Places:

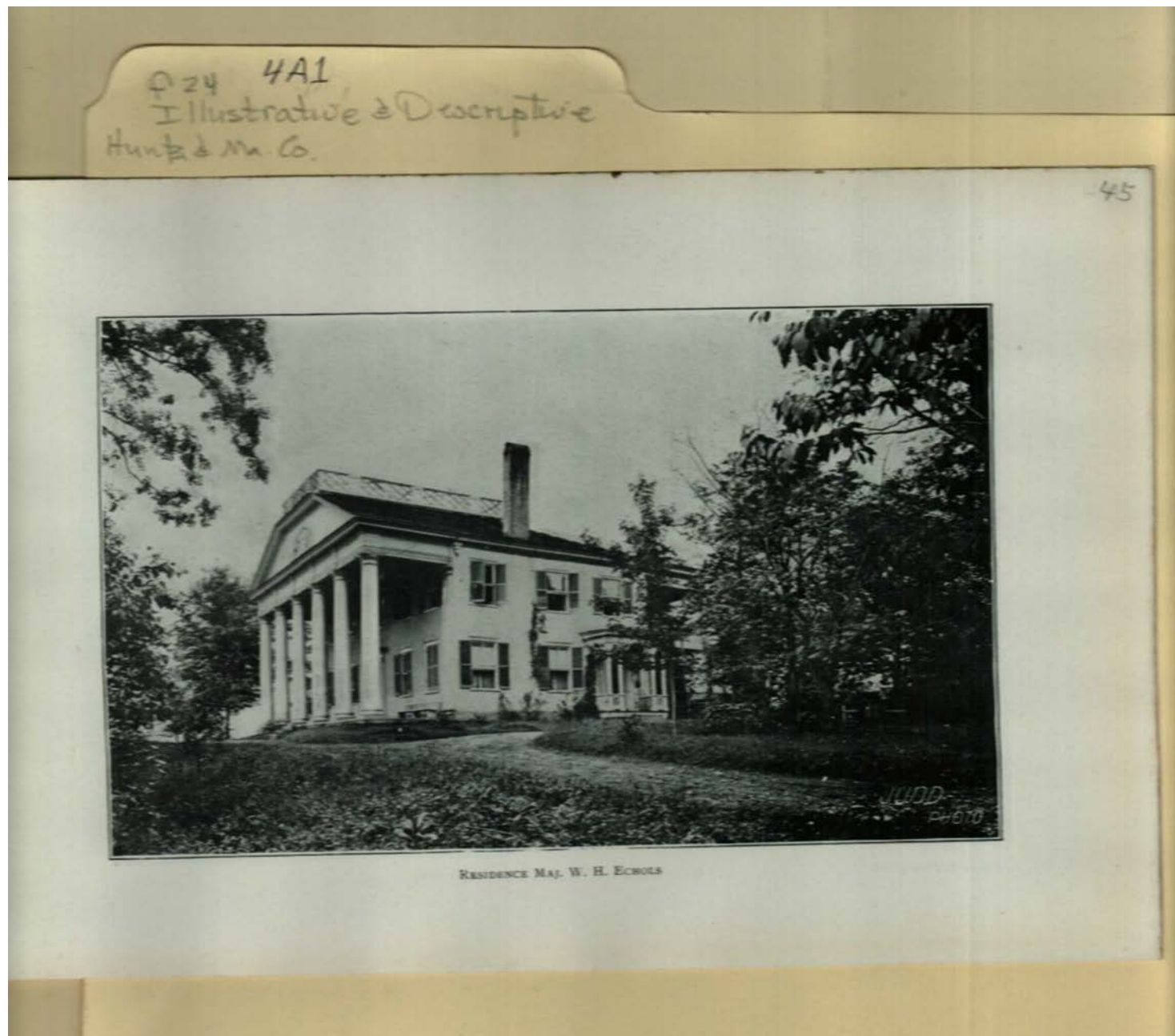
Huntsville, Madison
County, AL

Types:

advertisement

Dates:

before 1908



Names:

Echols, W. H., Major,
residence

Places:

Huntsville, Madison
County, AL

Types:

photo

Dates:

before 1908



Names:

Webster, F. W.,
residence

Places:

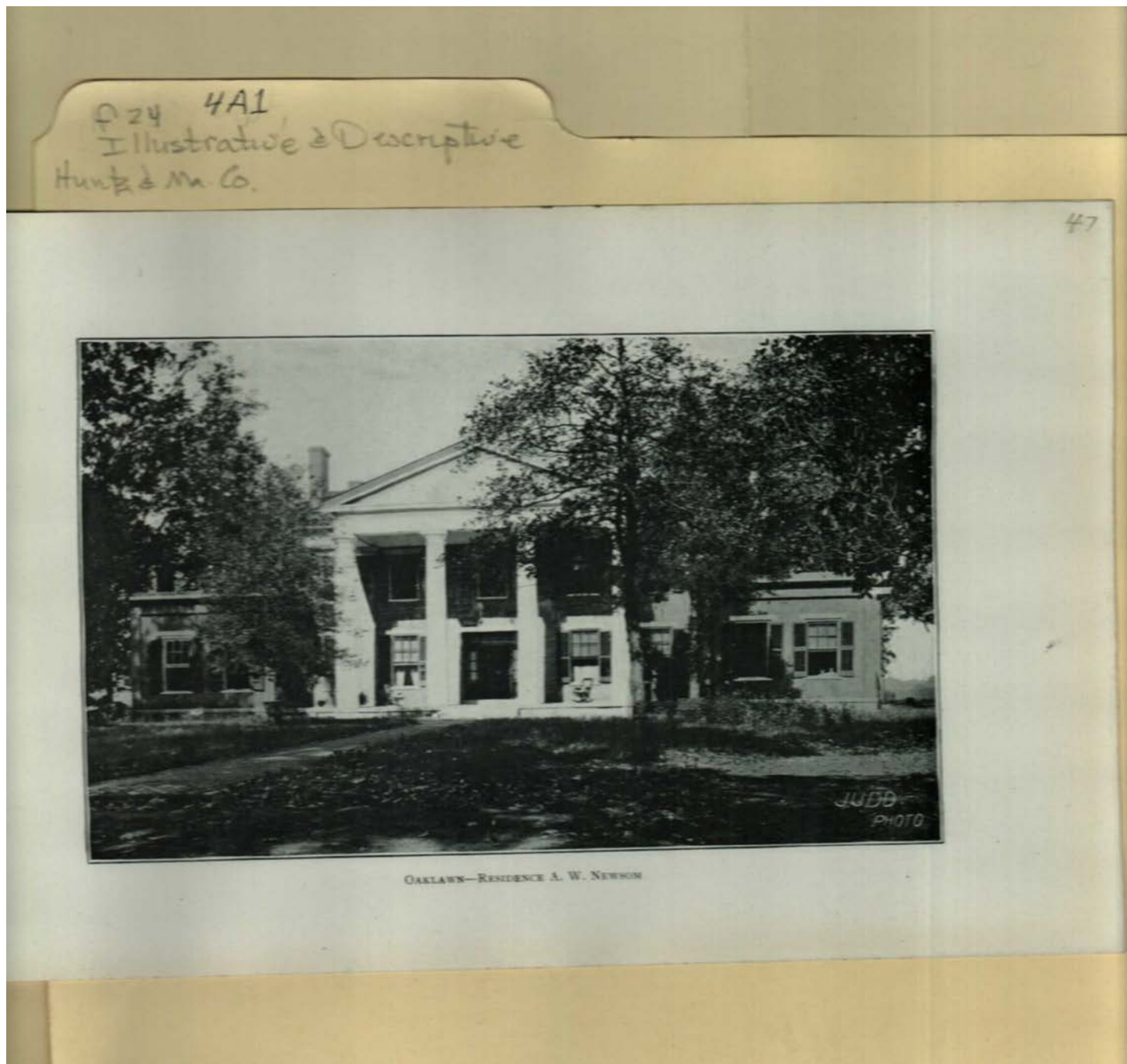
Huntsville, Madison
County, AL

Types:

photo

Dates:

before 1908



Names:

Newsom, A. W.
residence

Places:

Huntsville, Madison
County, AL

Types:

photo

Dates:

before 1908

Q 24 4A1
Illustrative & Descriptive
Hunts & Ma. Co.

48



RESIDENCE MRS. W. R. VANVALKENBURGH

Names:

VanValkenburg, W.
R. residence

Places:

Huntsville, Madison
County, AL

Types:

photo

Dates:

before 1908

Q24 4A1
Illustrative & Descriptive
Huntsville & M. Co.

49



Edgar L. Love, Archt.

RESIDENCE W. F. GARTH, PIEDMONT STOCK FARM

Names:

Garth, W. F.,
residence

Places:

Huntsville, Madison
County, AL

Types:

photo

Dates:

before 1908

P 24 4A1
Illustrative & Descriptive
Huntsville & Ma. Co.

50



RESIDENCE MISS JANE BIERNE

Names:

Bierne, Jane, Miss,
residence

Places:

Huntsville, Madison
County, AL

Types:

photo

Dates:

before 1908

Q24 4A1
Illustrative & Descriptive
Huntsville & Ma Co.

51



RESIDENCE HON. O. R. HUNDLEY

Names:

Hundley, O. R.
Residence

Places:

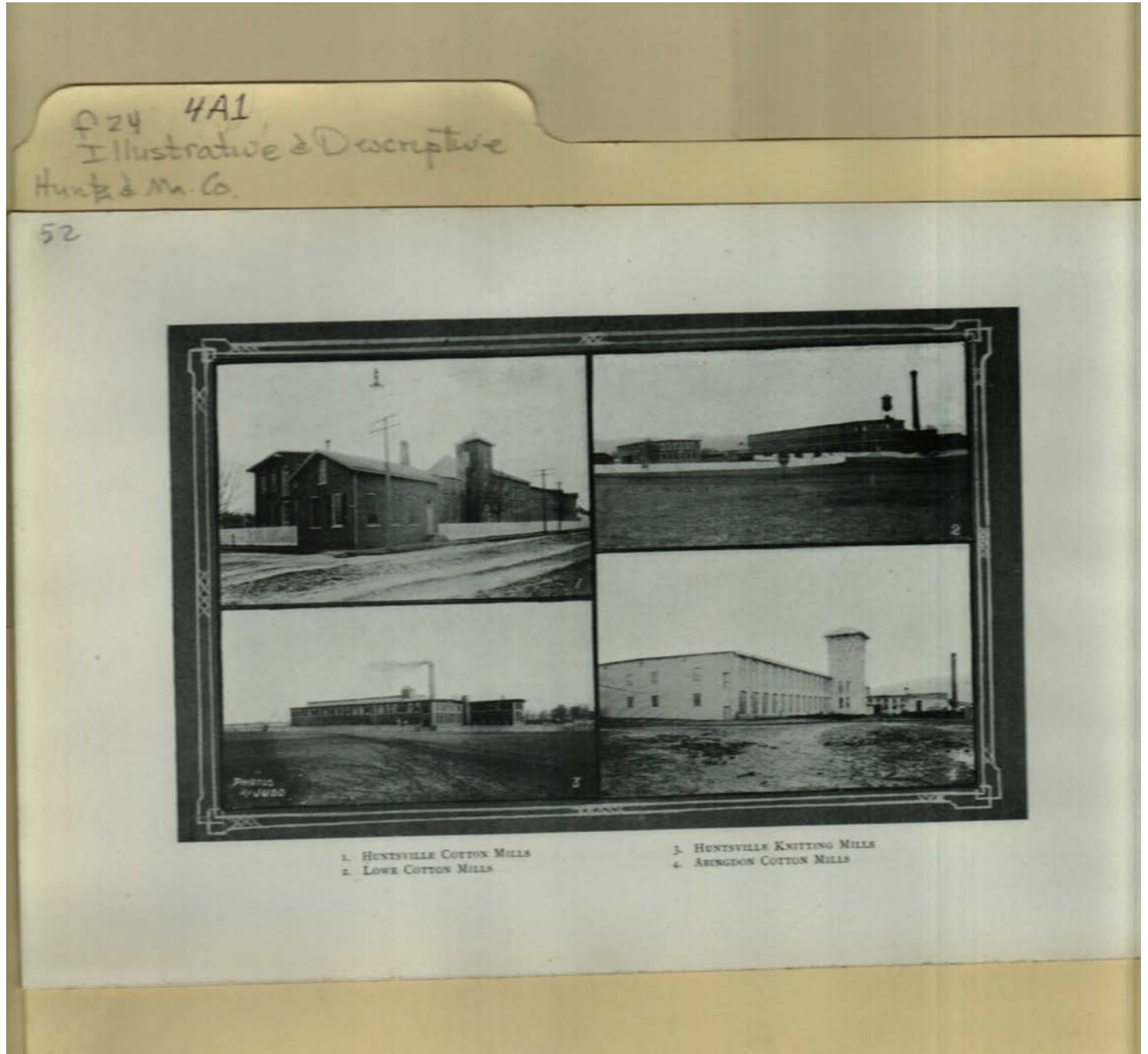
Huntsville, Madison
County, AL

Types:

photo

Dates:

before 1908



Names:

Huntsville Mills
buildings

Places:

Huntsville, Madison
County, AL

Types:

photo

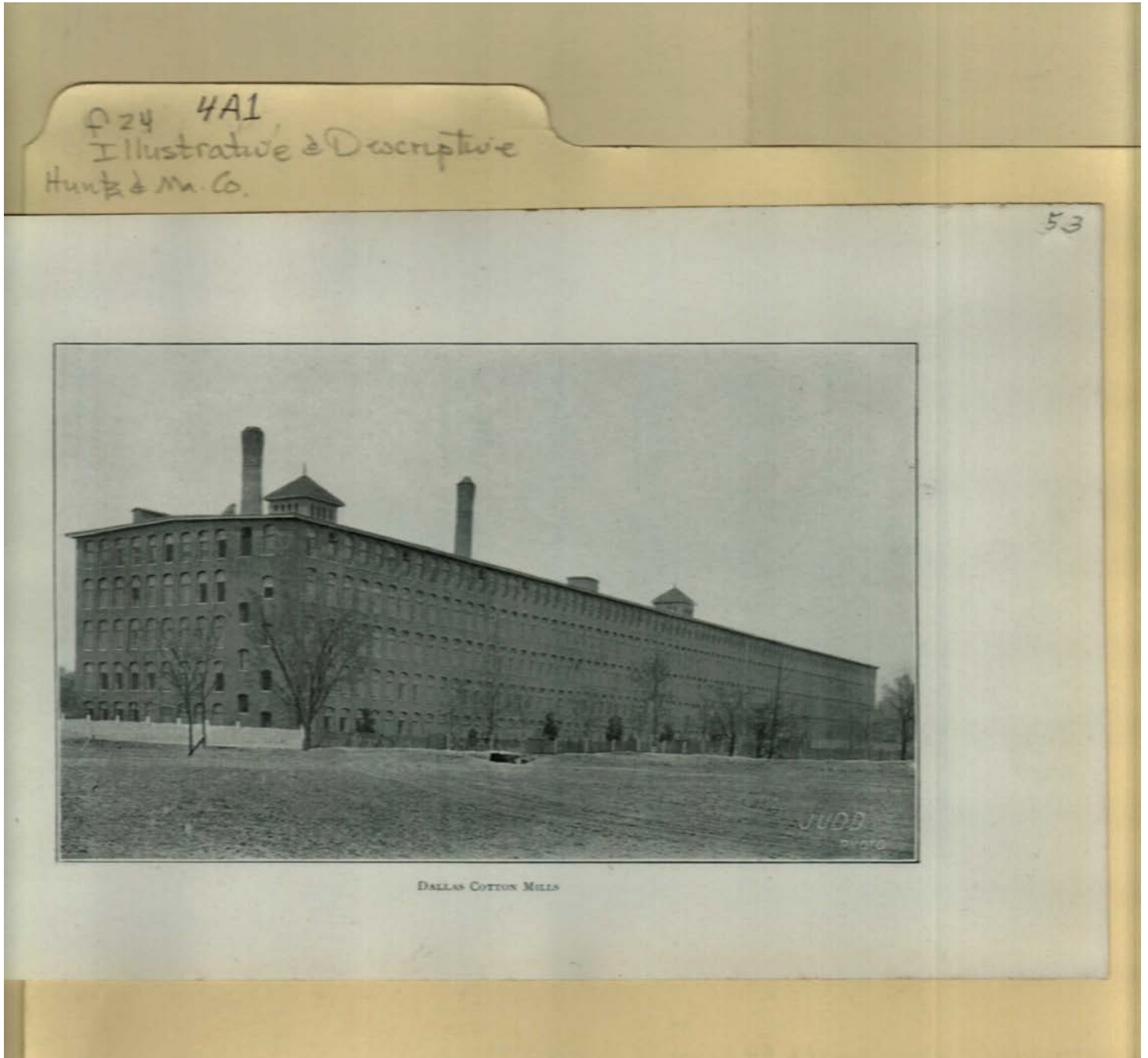
Dates:

before 1908

Frances Cabaniss Roberts Collection: Series 4, Subseries A, Box 1, Folder 24

Illustrative & Descriptive Huntsville & Madison County, circa 1910 - Early Huntsville Life and Memorabilia

Image 54 r04a01-24-000-0054 [Contents](#) [Index](#) [About](#)



Names:

Dallas Cotton Mills

Places:

Huntsville, Madison
County, AL

Types:

photo

Dates:

before 1908



Names:

Canning factory

Places:

Huntsville, Madison
County, AL

Types:

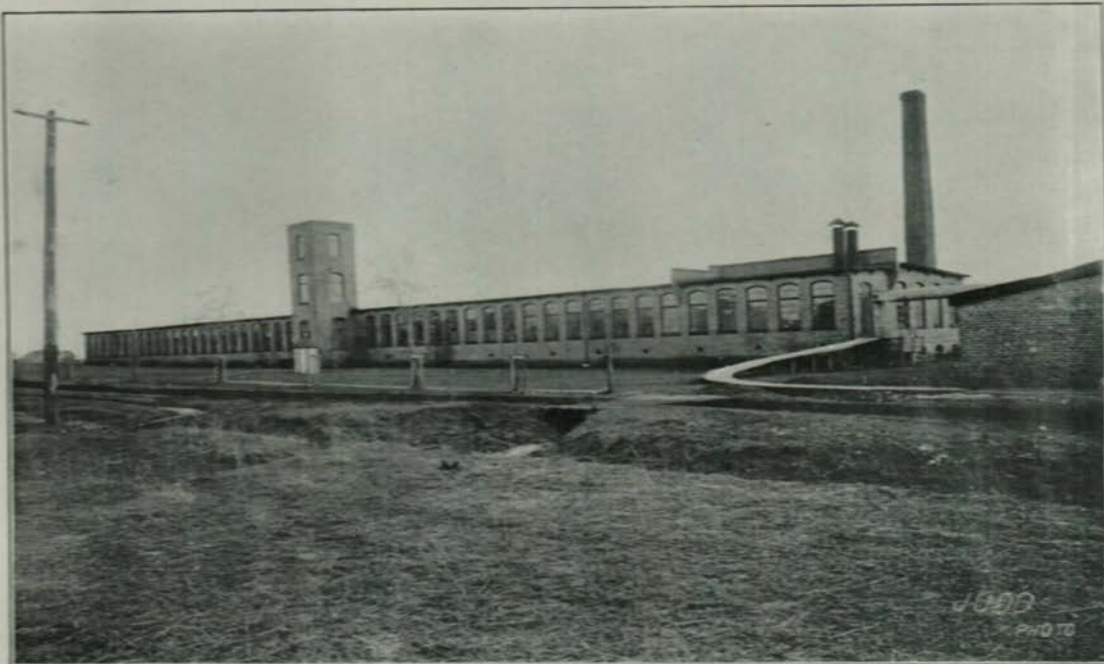
photo

Dates:

before 1908

p24 4A1
Illustrative & Descriptive
Huntsville & Ma. Co.

55



WEST HUNTSVILLE COTTON MILLS—T. W. PRATT, PRESIDENT

Names:

West Huntsville
Cotton Mill

Places:

Huntsville, Madison
County, AL

Types:

photo

Dates:

before 1908

P 24 4A1
Illustrative & Descriptive
Huntsville & Ma. Co.

56



COCA COLA BOTTLING WORKS

Names:

Coca Cola Bottling
Works

Places:

Huntsville, Madison
County, AL

Types:

photo

Dates:

before 1908

P 24 4A1
Illustrative & Descriptive
Huntsville & Ma. Co.

57



ICE FACTORY—HUNTSVILLE ICE & COAL COMPANY—DAILY CAPACITY 70 TONS

Names:

Huntsville Ice and
Coal

Places:

Huntsville, Madison
County, AL

Types:

photo

Dates:

before 1908



Names:

Deep Well #21

Natural Gas

Places:

Huntsville, Madison

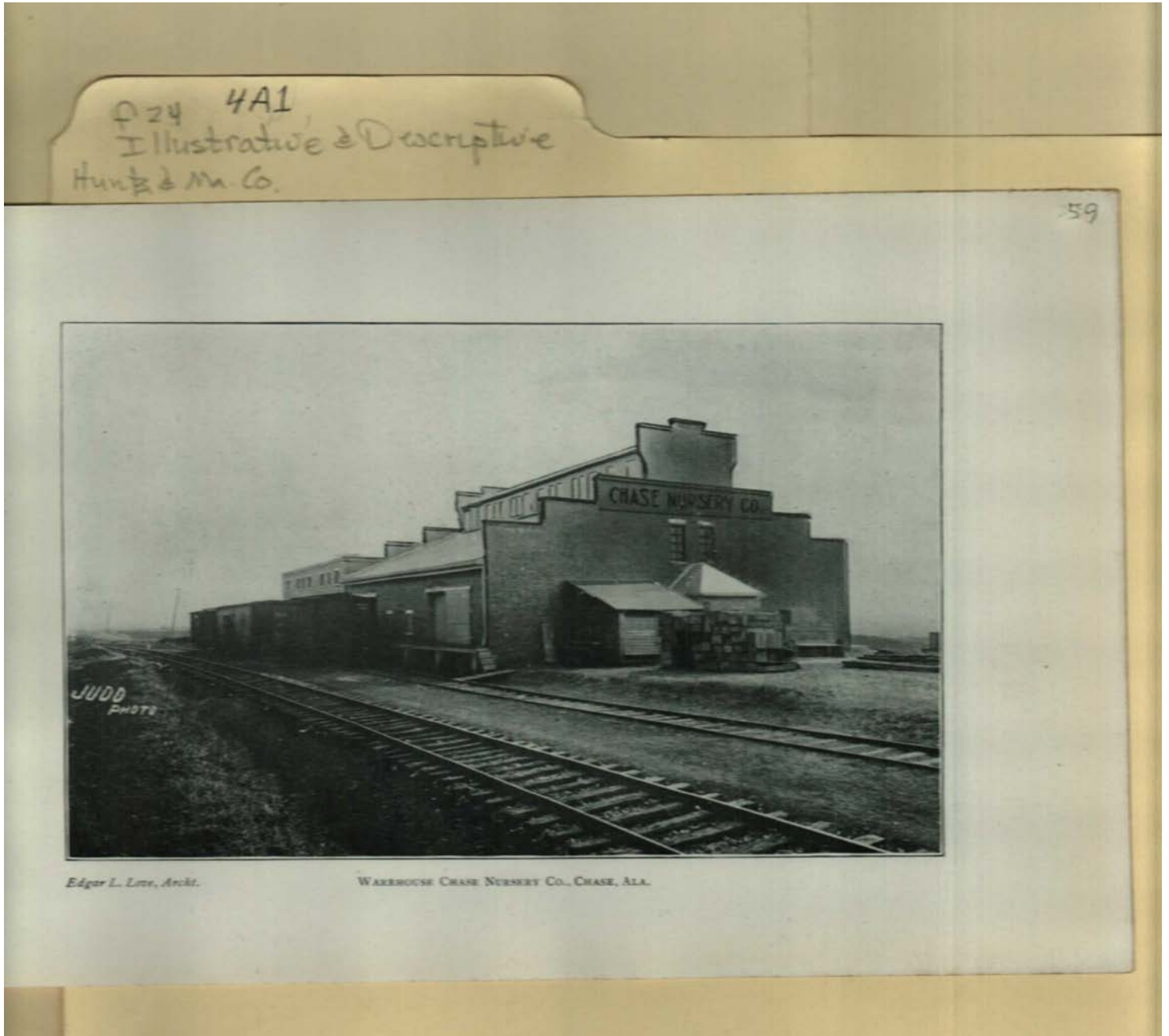
County, AL

Types:

photo

Dates:

before 1908



Names:

Chase Nursery
Warehouse

Places:

Huntsville, Madison
County, AL

Types:

photo

Dates:

before 1908



Names:

Pecan Tree native to
Madison County

Places:

Huntsville, Madison
County, AL

Types:

photo

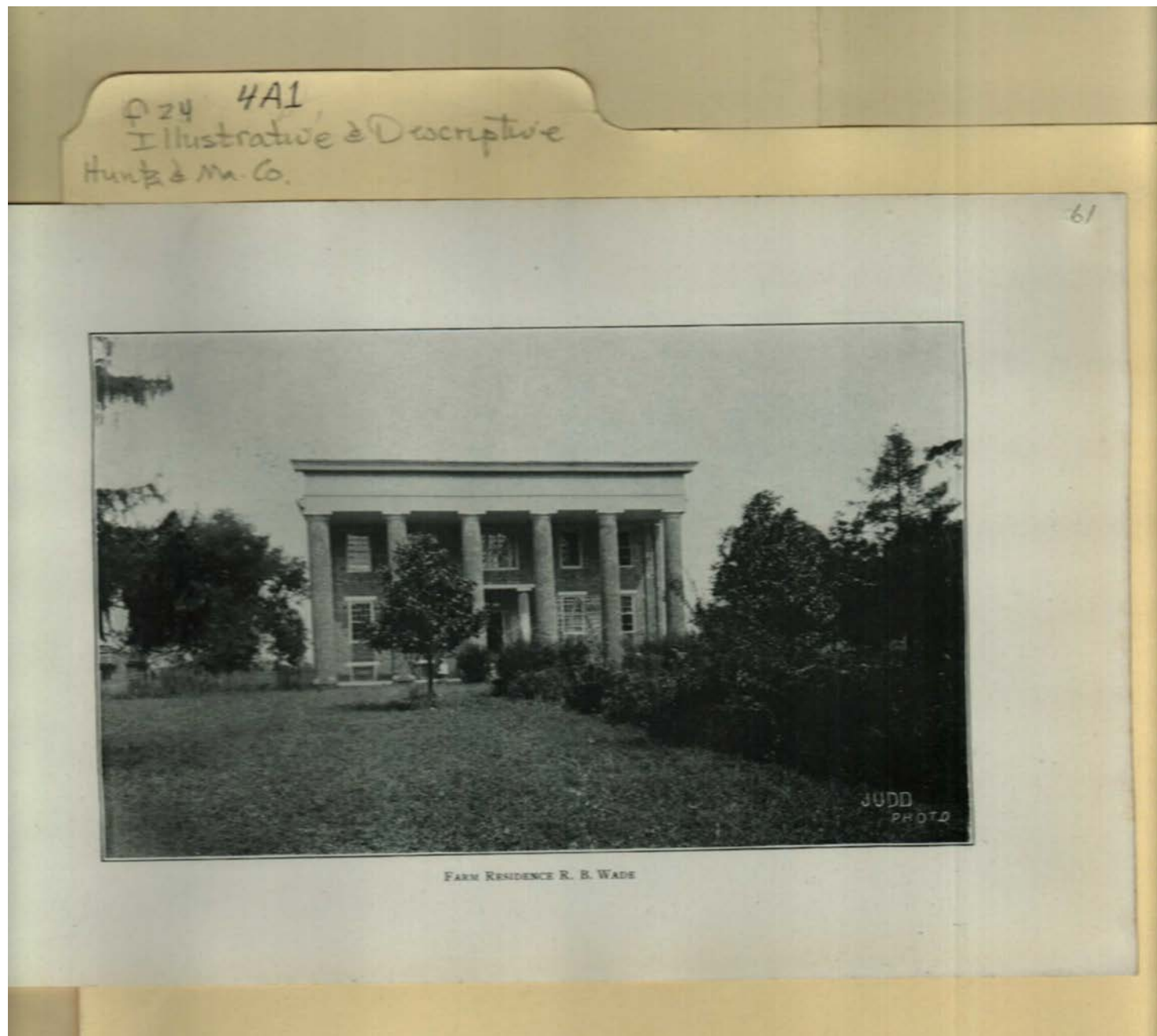
Dates:

before 1908

Frances Cabaniss Roberts Collection: Series 4, Subseries A, Box 1, Folder 24

Illustrative & Descriptive Huntsville & Madison County, circa 1910 - Early Huntsville Life and Memorabilia

Image 62 r04a01-24-000-0062 [Contents](#) [Index](#) [About](#)



Names:

Wade, R. B. residence

Places:

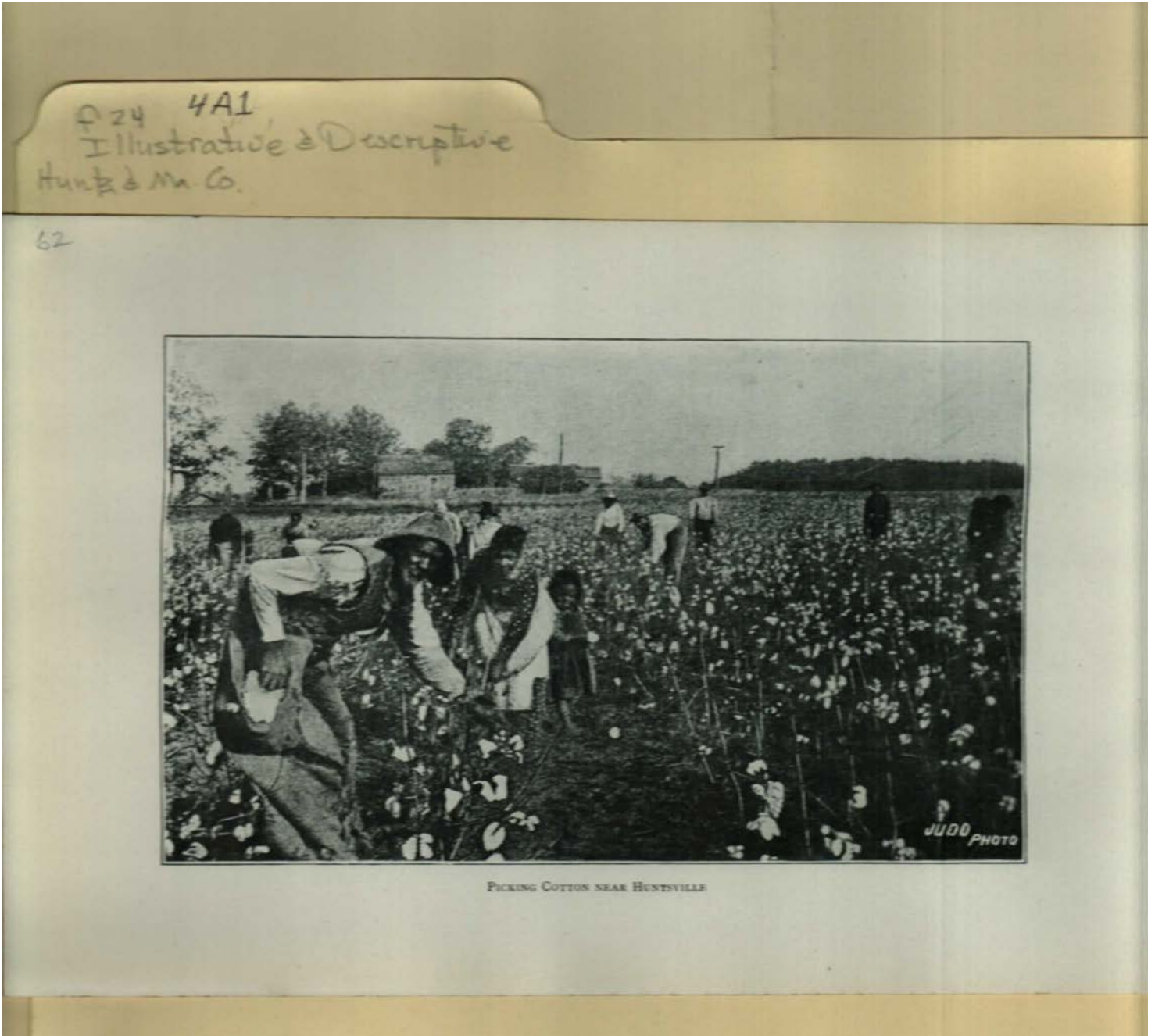
Huntsville, Madison
County, AL

Types:

photo

Dates:

before 1908



Names:

Cotton Picking near
Huntsville

Places:

Huntsville, Madison
County, AL

Types:

photo

Dates:

before 1908



Names:

Hertzler Farm Barn

Places:

Huntsville, Madison
County, AL

Types:

photo

Dates:

before 1908



Names:

Wade, R. B. Cattle
farm

Places:

Huntsville, Madison
County, AL

Types:

photo

Dates:

before 1908



Names:

Chase Nursery Co.
residences

Places:

Huntsville, Madison
County, AL

Types:

photo

Dates:

before 1908



Names:

Green, C. C., farm
residence

Places:

Huntsville, Madison
County, AL

Types:

photo

Dates:

before 1908



Names:

Hertzler, John , farm
residence

Places:

Huntsville, Madison
County, AL

Types:

photo

Dates:

before 1908



Names:

Bradley, J. J., farm
residence

Places:

Huntsville, Madison
County, AL

Types:

photo

Dates:

before 1908



Names:

Bradley, J. J.,
residence

Places:

Huntsville, Madison
County, AL

Types:

photo

Dates:

before 1908



Names:

Moss, Jessie F. ,
Orchard Place

Places:

Huntsville, Madison
County, AL

Types:

photo

Dates:

before 1908

Q24 4A1
Illustrative & Descriptive
Huntsville & M. Co.

71



FARM RESIDENCE OF R. A. PATTON, FORMERLY OF ILLINOIS

Names:

Patton, R. A., farm
residence

Places:

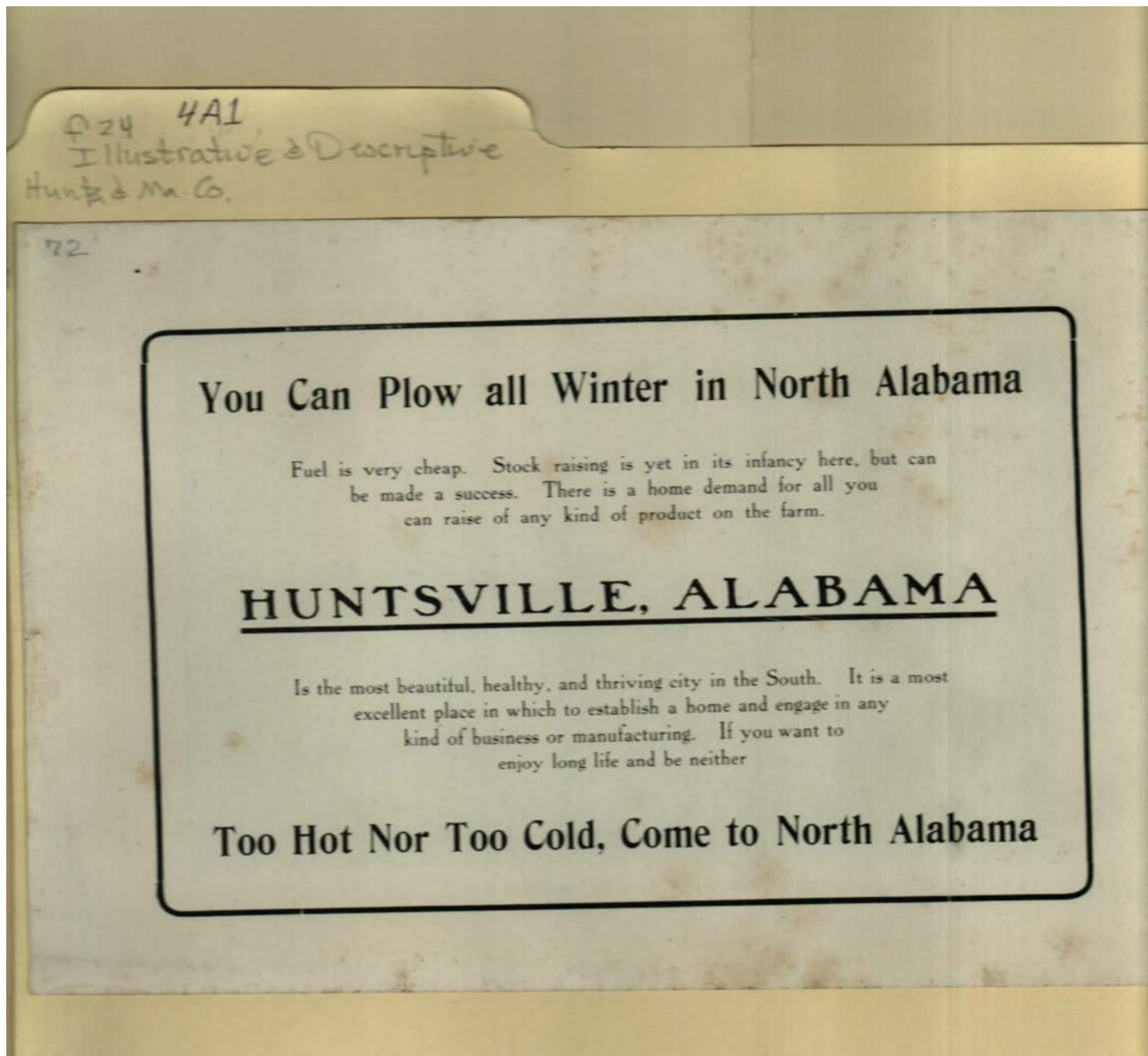
Huntsville, Madison
County, AL

Types:

photo

Dates:

before 1908



Names:

Huntsville, Alabama

Places:

Huntsville, Madison
County, AL

Types:

advertisement

Dates:

before 1908

Table of Contents

[Image 1](#) (r04a01-24-000-0001)
[Image 2](#) (r04a01-24-000-0002)
[Image 3](#) (r04a01-24-000-0004)
[Image 4](#) (r04a01-24-000-0005)
[Image 5](#) (r04a01-24-000-0006)
[Image 6](#) (r04a01-24-000-0007)
[Image 7](#) (r04a01-24-000-0008)
[Image 8](#) (r04a01-24-000-0009)
[Image 9](#) (r04a01-24-000-0010)
[Image 10](#) (r04a01-24-000-0011)
[Image 11](#) (r04a01-24-000-0012)
[Image 12](#) (r04a01-24-000-0013)
[Image 13](#) (r04a01-24-000-0014)
[Image 14](#) (r04a01-24-000-0015)
[Image 15](#) (r04a01-24-000-0016)
[Image 16](#) (r04a01-24-000-0017)
[Image 17](#) (r04a01-24-000-0018)
[Image 18](#) (r04a01-24-000-0019)
[Image 19](#) (r04a01-24-000-0020)

[Image 20](#) (r04a01-24-000-0021)
[Image 21](#) (r04a01-24-000-0022)
[Image 22](#) (r04a01-24-000-0023)
[Image 23](#) (r04a01-24-000-0024)
[Image 24](#) (r04a01-24-000-0025)
[Image 25](#) (r04a01-24-000-0026)
[Image 26](#) (r04a01-24-000-0027)
[Image 27](#) (r04a01-24-000-0028)
[Image 28](#) (r04a01-24-000-0029)
[Image 29](#) (r04a01-24-000-0030)
[Image 30](#) (r04a01-24-000-0031)
[Image 31](#) (r04a01-24-000-0032)
[Image 32](#) (r04a01-24-000-0032a)
[Image 33](#) (r04a01-24-000-0033)
[Image 34](#) (r04a01-24-000-0034)
[Image 35](#) (r04a01-24-000-0035)
[Image 36](#) (r04a01-24-000-0036)
[Image 37](#) (r04a01-24-000-0037)
[Image 38](#) (r04a01-24-000-0038)

[Image 39](#) (r04a01-24-000-0039)
[Image 40](#) (r04a01-24-000-0040)
[Image 41](#) (r04a01-24-000-0041)
[Image 42](#) (r04a01-24-000-0042)
[Image 43](#) (r04a01-24-000-0043)
[Image 44](#) (r04a01-24-000-0044)
[Image 45](#) (r04a01-24-000-0045)
[Image 46](#) (r04a01-24-000-0046)
[Image 47](#) (r04a01-24-000-0047)
[Image 48](#) (r04a01-24-000-0048)
[Image 49](#) (r04a01-24-000-0049)
[Image 50](#) (r04a01-24-000-0050)
[Image 51](#) (r04a01-24-000-0051)
[Image 52](#) (r04a01-24-000-0052)
[Image 53](#) (r04a01-24-000-0053)
[Image 54](#) (r04a01-24-000-0054)
[Image 55](#) (r04a01-24-000-0055)
[Image 56](#) (r04a01-24-000-0056)
[Image 57](#) (r04a01-24-000-0057)

[Image 58](#) (r04a01-24-000-0058)
[Image 59](#) (r04a01-24-000-0059)
[Image 60](#) (r04a01-24-000-0060)
[Image 61](#) (r04a01-24-000-0061)
[Image 62](#) (r04a01-24-000-0062)
[Image 63](#) (r04a01-24-000-0063)
[Image 64](#) (r04a01-24-000-0064)
[Image 65](#) (r04a01-24-000-0065)
[Image 66](#) (r04a01-24-000-0066)
[Image 67](#) (r04a01-24-000-0067)
[Image 68](#) (r04a01-24-000-0068)
[Image 69](#) (r04a01-24-000-0069)
[Image 70](#) (r04a01-24-000-0070)
[Image 71](#) (r04a01-24-000-0071)
[Image 72](#) (r04a01-24-000-0072)
[Image 73](#) (r04a01-24-000-0073)
[Table of Contents](#)
[Name & Place Index](#)
[About the Collection](#)

Frances Cabaniss Roberts Collection: Series 4, Subseries A, Box 1, Folder 24

Illustrative & Descriptive Huntsville & Madison County, circa 1910 - Early Huntsville Life and Memorabilia

[Contents](#) [Index](#) [About](#)

Name & Place Index

Adams Avenue scene [29](#)
Bierne, Jane, Miss, residence [34](#), [51](#)
Big Spring [10](#)
Bradley & Conner, Real Estate [23](#), [32](#)
Bradley, J. J., farm residence [43](#), [69](#)
Bradley, J. J., residence [70](#)
Bradley, Joseph J., agent [24](#), [36](#)
Bradley, Joseph J., residence [43](#)
Business Men's Club [20](#)
Business Men's League [2](#), [7](#)
Butler Training School [16](#)
Canning factory [55](#)
Chase Nursery Co. residences [41](#), [66](#)
Chase Nursery Warehouse [38](#), [60](#)
Climate [9](#)
Coca Cola Bottling Works [37](#), [57](#)
Come to North Alabama [45](#)
Cotton Picking near Huntsville [40](#), [63](#)
Cotton Sale Day at Square [28](#)
Court House [11](#)
cover [6](#)
Dallas Cotton Mills [35](#), [54](#)
Deep Well #21 Natural Gas [38](#), [59](#)
Echols, W. H., Major, residence [30](#), [46](#)
Elks Lodge [13](#)
Fair Grounds [17](#)
Farm Land Numbers [19](#)
Farm Land [17](#)
Federal Post Office [12](#)
First National Bank Building [18](#)
Garth, W. F., residence [33](#), [50](#)
Green, C. C., farm residence [67](#)
Green, C. C., farm residence [42](#)
Hertzler Farm Barn [40](#), [64](#)
Hertzler, John , farm residence [42](#), [68](#)
Humes, Milton residence [29](#)
Humphrey, W. L. Secretary [21](#)
Hundley, O. R. residence [34](#)
Hundley, O. R. Residence [52](#)
Hunt, Ben P. residence [30](#)
Huntsville Description [4](#)
Huntsville Ice and Coal [37](#), [58](#)
Huntsville Mills buildings [35](#), [53](#)
Huntsville Training School [15](#)
Huntsville, Alabama [73](#)
Huntsville, Madison County, AL [1](#), [2](#), [3](#), [4](#), [5](#), [6](#), [7](#), [8](#), [9](#),
[10](#), [11](#), [12](#), [13](#), [14](#), [15](#), [16](#), [17](#), [18](#), [19](#), [20](#), [21](#), [22](#), [23](#),
[24](#), [25](#), [26](#), [27](#), [28](#), [29](#), [30](#), [31](#), [32](#), [33](#), [34](#), [35](#), [36](#), [37](#),
[38](#), [39](#), [40](#), [41](#), [42](#), [43](#), [44](#), [45](#), [46](#), [47](#), [48](#), [49](#), [50](#), [51](#),
[52](#), [53](#), [54](#), [55](#), [56](#), [57](#), [58](#), [59](#), [60](#), [61](#), [62](#), [63](#), [64](#), [65](#),
[66](#), [67](#), [68](#), [69](#), [70](#), [71](#), [72](#), [73](#)
Illustrative & Descriptive [1](#)
Industries [13](#)
Introduction [8](#)
Jefferson Street [23](#)
Livestock [16](#)
Local Churches [3](#), [5](#), [8](#), [9](#)
Lyman, Herbert, Merrimack treasurer [36](#)
McBeth, W. A, new farmer [21](#)
Melrose Place, [31](#)
Mercury Publishing Co. [27](#)
Merrimack Manufacturing Co. [24](#), [36](#)
Monte Sano scenes [28](#)
Monte Sano [15](#)
Moss, Jesse F., Mrs [44](#)
Moss, Jessie F. , Orchard Place [71](#)
Newsom, A. W. Residence [31](#)
Newsom, A. W. residence [48](#)
Note to Northern Farmers [18](#)
Nurseries [16](#)
Oaklawn [31](#)
Orchard Place [44](#)
Patton, R. A. residence [44](#)
Patton, R. A., farm residence [72](#)
Pecan Tree native to Madison County [61](#)
Pecan Tree, Cruse Variety [39](#)
Public School Building [14](#)
Resources [14](#)
Schools and Mills [12](#)
Shiffman Banking Building [25](#)
Shiffman Building [19](#)
Streets and Hotels [11](#)
Struve Building [27](#)
Terry Brother's Department Store [26](#)
Thompson Land Office [20](#), [22](#)
VanValkenburg, W. R. residence [33](#), [49](#)
W. R. Rison Banking Co. [21](#)
Wade, R. B. Residence [39](#)
Wade, R. B. residence [62](#)
Wade, R. B. Cattle farm [41](#), [65](#)
Water Supply [10](#)
Webster, F. W., residence [31](#), [47](#)
West Huntsville Cotton Mill [56](#)

Frances Cabaniss Roberts Collection

Preferred Citation: Frances Cabaniss Roberts Collection, Archives and Special Collections, M. Louis Salmon Library, University of Alabama in Huntsville, Huntsville, AL.

Collection Scope and Content: The Collection of 114 Linear ft. includes a total of 156 Archival Boxes. The Frances Cabaniss Roberts collection covers the historical records of the Cabaniss Roberts family. This collection contains extensive correspondence records of the Cabaniss Roberts family circa 1830 to 1930.

Archives/Special Collections Access Restrictions: None

Conditions Governing Use: This material may be protected under U. S. Copyright Law (Title 17, U.S. Code) which governs the making of photocopies or reproductions of copyrighted materials. You may use the digitized material for private study, scholarship, or research. Though the University of Alabama in Huntsville Archives and Special Collections has physical ownership of the material in its collections, in some cases we may not own the copyright to the material. It is the patron's obligation to determine and satisfy copyright restrictions when publishing or otherwise distributing materials found in our collections.

Provenance: Gift of Johanna Shields on October 28, 2006.



THE UNIVERSITY OF
ALABAMA IN HUNTSVILLE

**The UAH Archives and Special Collections
M. Louis Salmon Library**