

Names:

Baldrige, Elizabeth
 Caroline Mitchell
 Baldrige, Ella M.
 Johnson
 Baldrige, Felix
 Edgar
 Baldrige, Milton C.,
 Jr.
 Baldrige, Milton
 Columbus, Dr.
 Baldrige, Stella

Baldrige, Viola
 Baldrige, William
 Beasley, James A.,
 Dr.
 Brandon, John D.
 Clemens, Jeremiah
 Cooper, Lawrence
 Cruse, Samuel R.
 Darwin, J. L.
 Dement, John J.

Fletcher, P. M., Sr.,
 Dr.
 Goldman, J. F.
 Halsey, C. H.
 Harris, S. W.
 Humphrey, Thomas I.
 Johnson, Ella M.
 Lowry, Samuel H.,
 Dr.
 Martin, Joseph

Mastin, Charles J.,
 Colonel
 McDonnell, Henry,
 Dr.
 McDonnell,
 Archibald
 Moore, William H.,
 Judge
 Neeley, Anderson P.
 Neeley, Eliza M.

Neeley, Narcissa
Caroline
Rand, Jackson
Rand, Olive Davis

Rison, John L.
Rison, William R.
Robinson, Murray
Schiffman, Mrs.

Shaver, Charles, Sr.
Shaver, Helen
Shaver, Mary Gilbert
Warwick, Mary

Weil, H.
Whitten, S. L.
Wilson, Robert H.
Wynn, A. M.

Places:

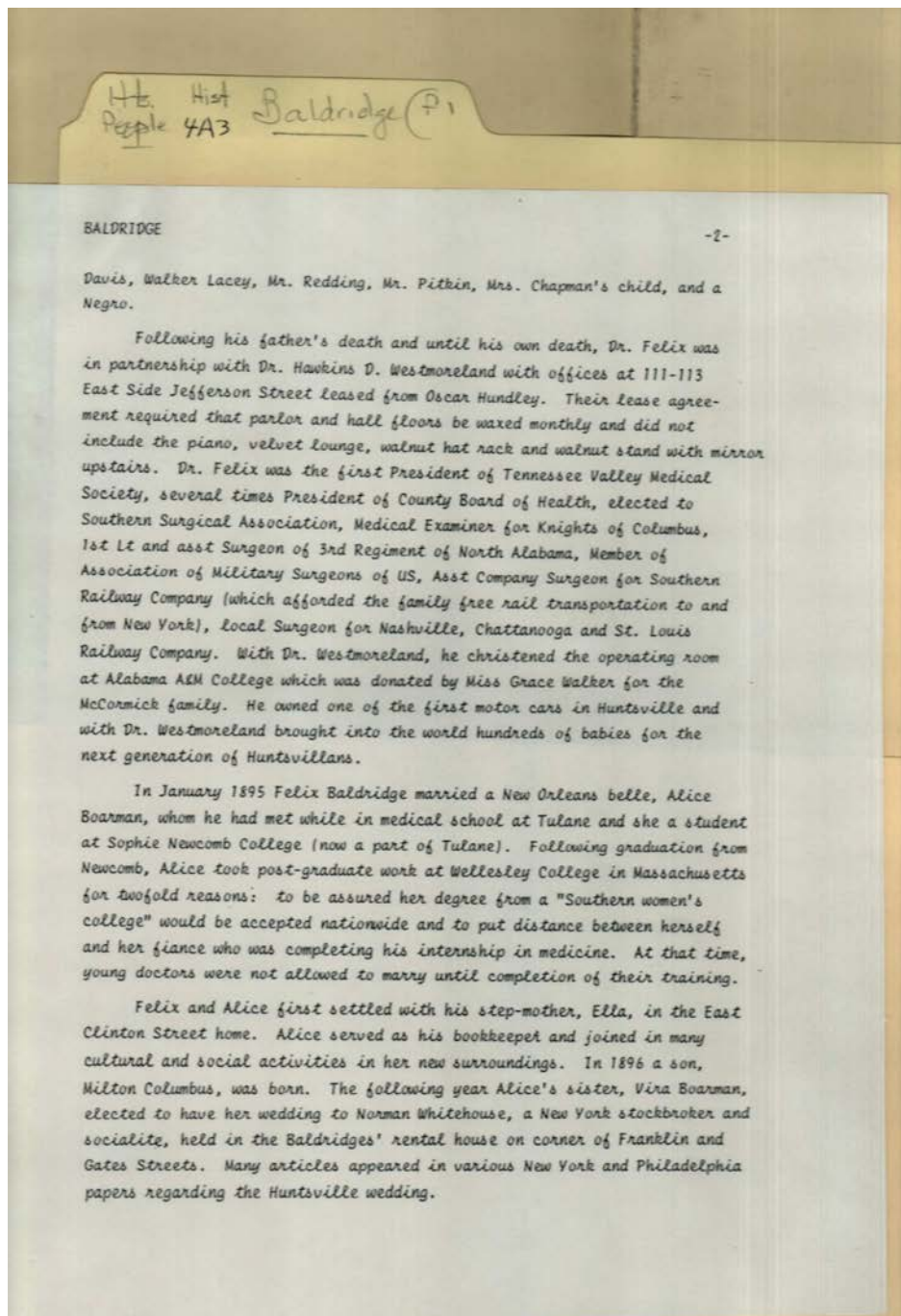
Huntsville, AL

Types:

essay

Baldrige Family

Image 2 r04a03-01-000-0004 [Contents](#) [Index](#) [About](#)



Names:

Baldrige, Ella M.
Johnson
Baldrige, Felix, Dr.
Baldrige, Milton
Columbus

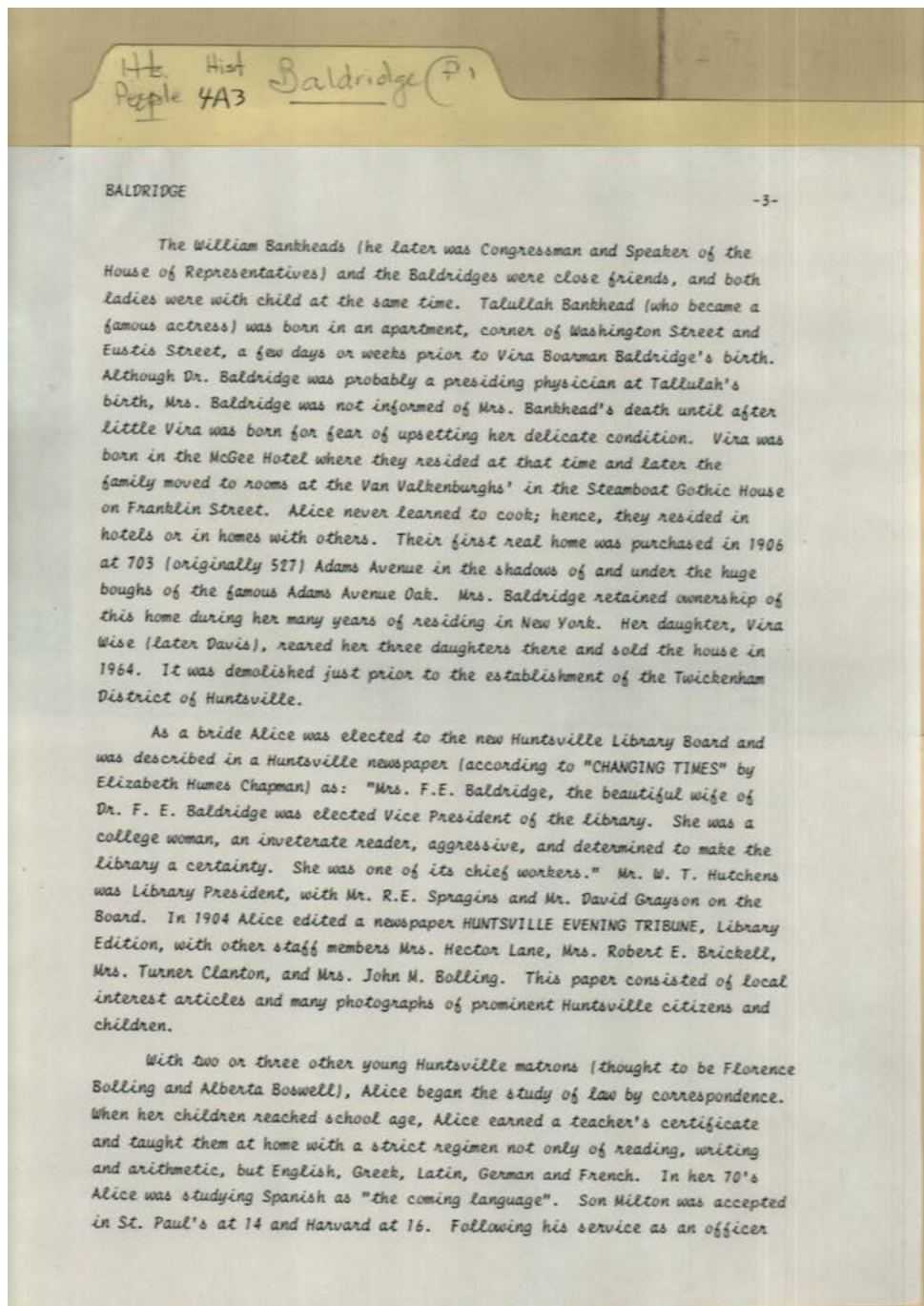
Boarman, Alice
Boarman, Vira
Chapman,
Hundley, Oscar
Lacey, Walker

McCormick,
Pitkin,
Redding,
Walker, Grace

Westmoreland,
Hawkins D., Dr.
Whitehouse, Norman

Types:

essay



Names:

Baldrige, Alice
Boarman
Baldrige, Dr.
Baldrige, F. E., Mrs.
Baldrige, Milton
Baldrige, Vira
Boarman

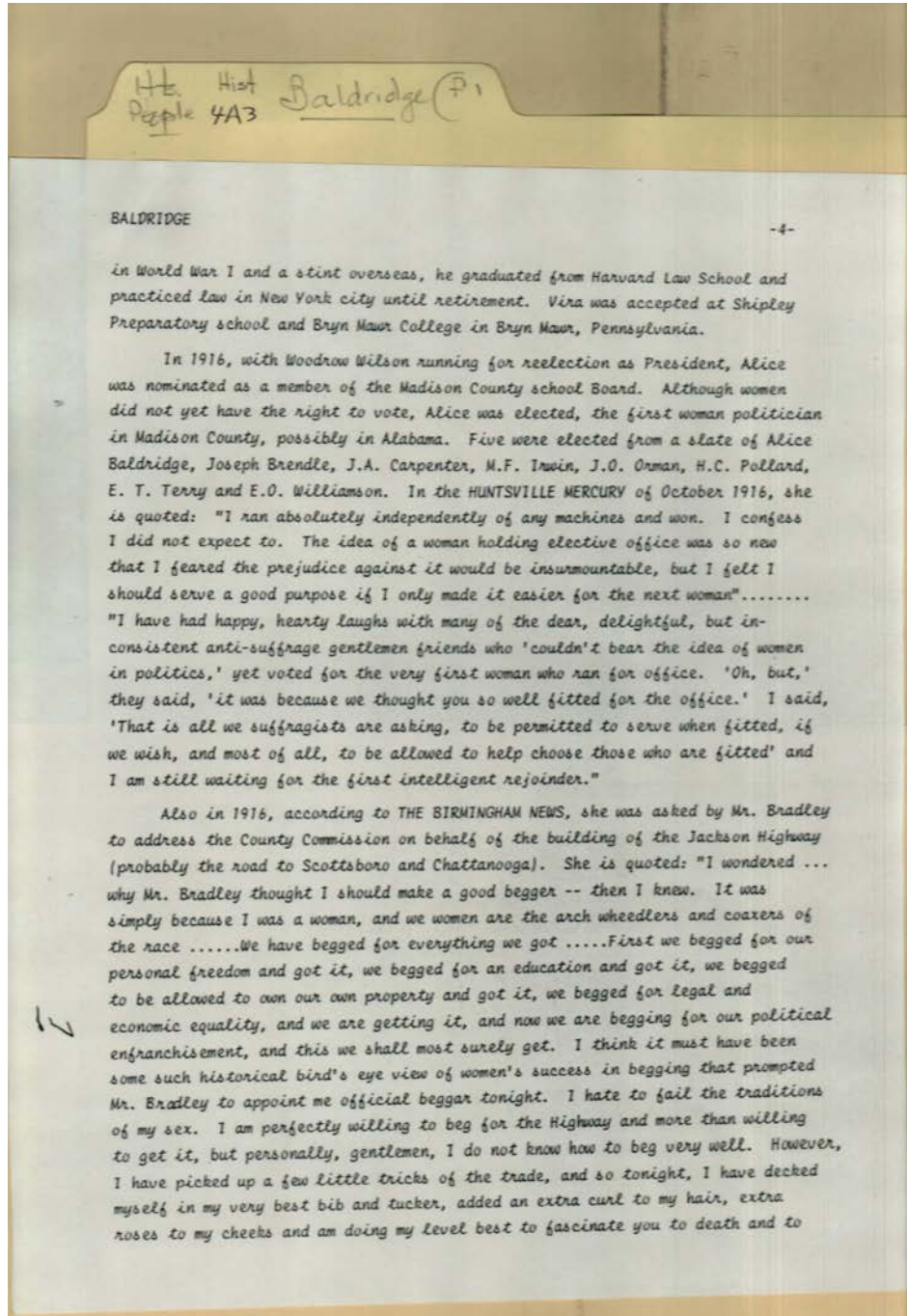
Bankhead, Talullah
Bankhead, William
Bolling, Florence
Bolling, John M.,
Mrs.
Boswell, Alberta

Brickell, Robert E.,
Mrs.
Chapman, Elizabeth
Humes
Clanton, Turner, Mrs.
Davis, Vira Wise
Grayson, David

Hutchens, W. T.
Lane, Hector, Mrs.
Spragins, R. E.
VanValkenburgh,
Wise, Vira

Types:

essay



Names:

Baldrige, Alice
Baldrige, Vira
Bradley,

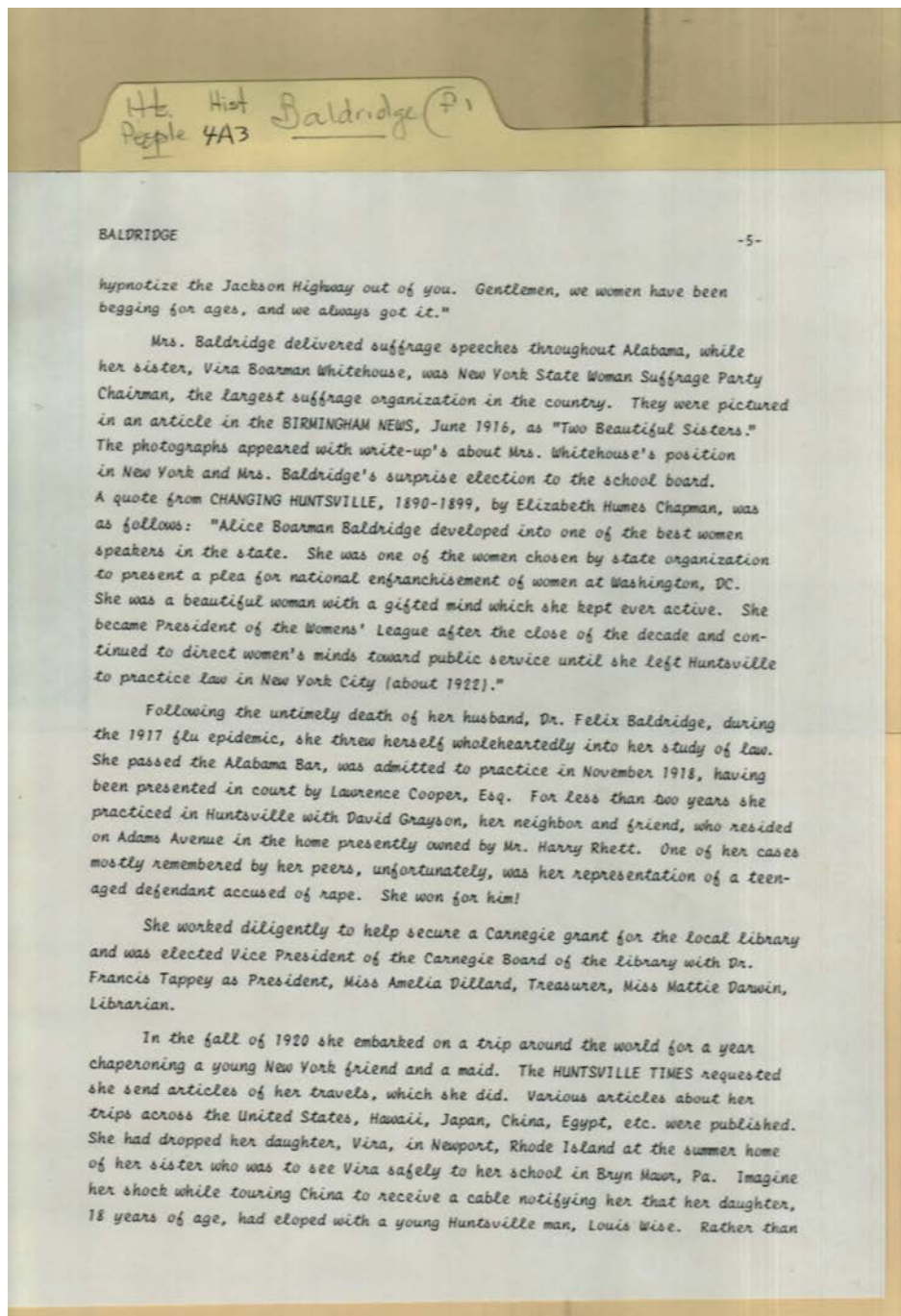
Brendle, Joseph
Carpenter, J. A.
Irwin, M. F.

Orman, J. O.
Pollard, H. C.
Terry, E. T.

Williamson, E. O.
Wilson, Woodrow,
President

Types:

essay



Names:

Baldrige, Alice
Boarman
Baldrige, Felix , Dr.
Baldrige, Vira

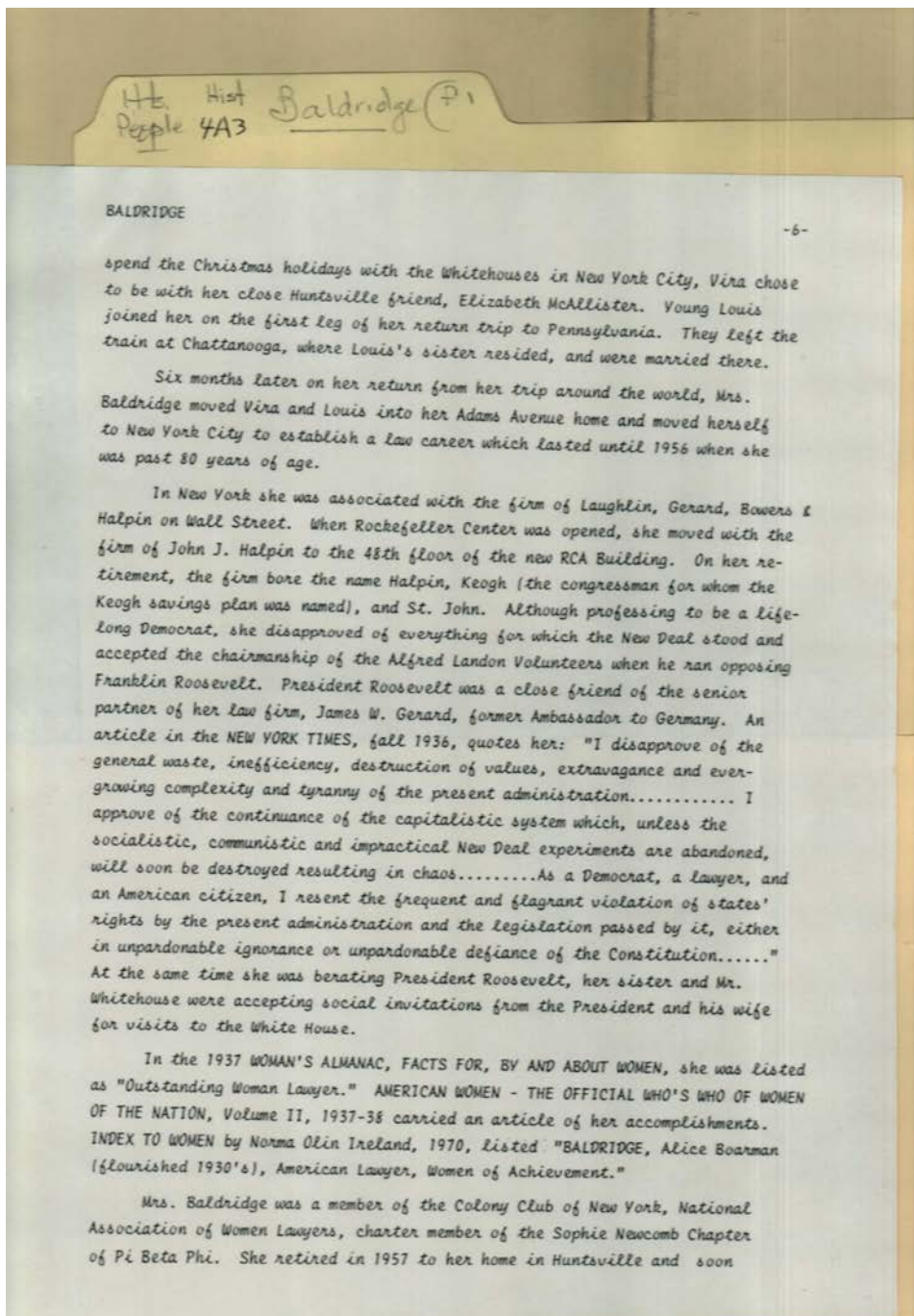
Chapman, Elizabeth
Humes
Cooper, Lawrence
Darwin, Mattie

Dillard, Amelia
Grayson, David
Rhett, Harry
Tappey, Francis, Dr.

Whitehouse, Vira
Boarman
Wise, Louis

Types:

essay



Names:

Baldrige, Alice
Boarman
Baldrige, Vira
Bowers,

Gernard, James W.
Halpin, John J.
Ireland, Norma Olin
Keogh,

Landon, Alfred
Laughlin,
McAllister, Elizabeth
Newcomb, Sophie

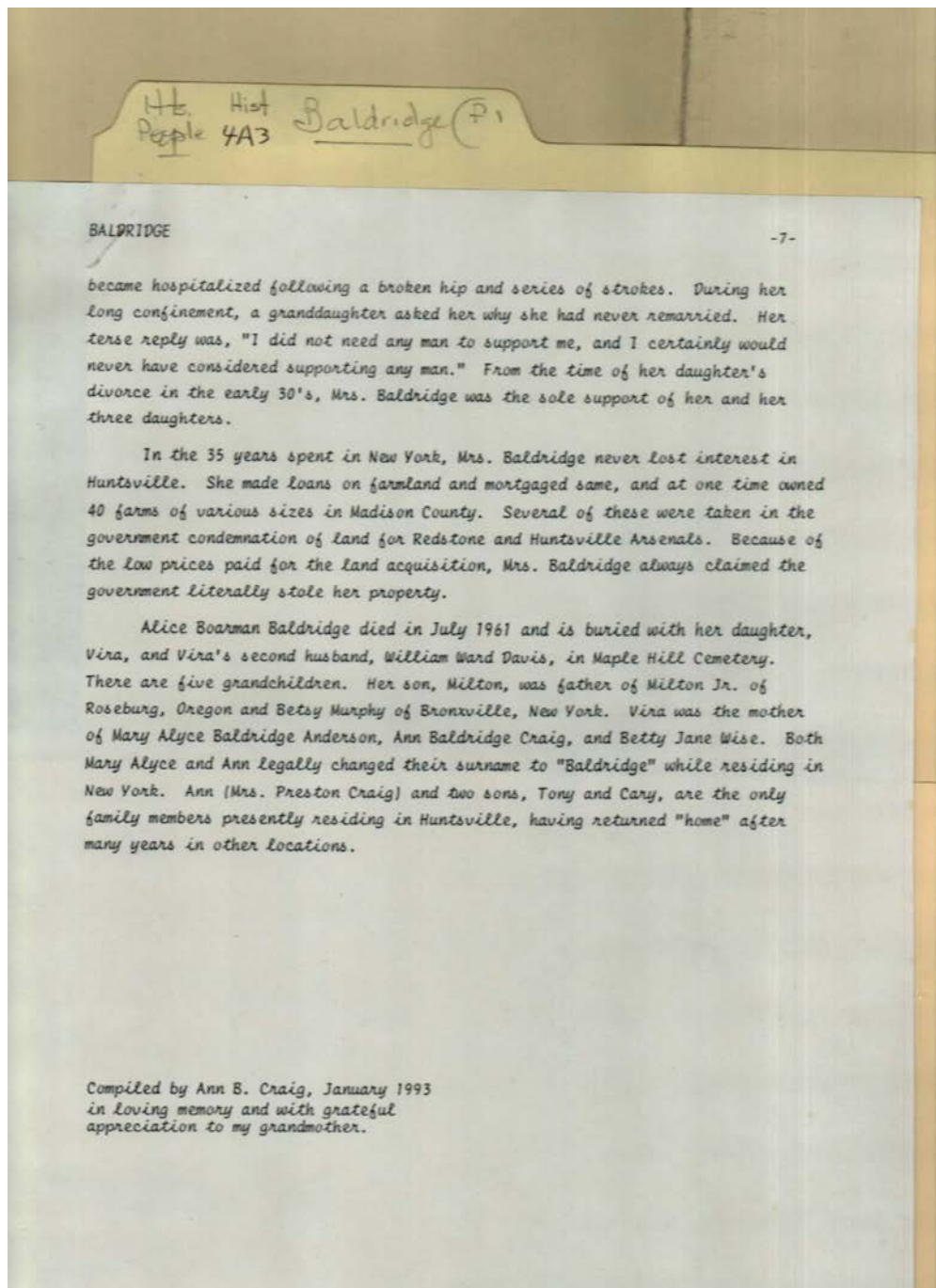
Roosevelt, Franklin
St. John,
Whitehouse,
Wise, Louis

Types:

essay

Baldrige Family

Image 7 r04a03-01-000-0009 [Contents](#) [Index](#) [About](#)



Names:

Anderson, Mary
Alyce Baldrige
Baldrige, Alice
Boarman

Baldrige, Milton
Craig, Ann B.
Craig, Ann Baldrige
Craig, Cary

Craig, Preston
Craig, Tony
Davis, Vira Wise
Davis, William Ward

Wise, Betty Jane

Types:

essay

Dates:

Jan 1993

Frances Cabaniss Roberts Collection: Series 4, Subseries A, Box 3, Folder 1

Baldrige Family

[Contents](#) [Index](#) [About](#)

Table of Contents

[Image 1](#) (r04a03-01-000-0003)

[Image 4](#) (r04a03-01-000-0006)

[Image 7](#) (r04a03-01-000-0009)

[Name & Place Index](#)

[Image 2](#) (r04a03-01-000-0004)

[Image 5](#) (r04a03-01-000-0007)

[Table of Contents](#)

[About the Collection](#)

[Image 3](#) (r04a03-01-000-0005)

[Image 6](#) (r04a03-01-000-0008)

Baldrige Family

[Contents](#) [Index](#) [About](#)

Name & Place Index

Anderson, Mary Alyce Baldrige [7](#)
Baldrige, Alice Boarman [3](#), [5](#), [6](#), [7](#)
Baldrige, Alice [4](#)
Baldrige, Dr. [3](#)
Baldrige, Elizabeth Caroline Mitchell [1](#)
Baldrige, Ella M. Johnson [1](#), [2](#)
Baldrige, F. E., Mrs. [3](#)
Baldrige, Felix , Dr. [2](#), [5](#)
Baldrige, Felix Edgar [1](#)
Baldrige, Milton C., Jr. [1](#)
Baldrige, Milton Columbus, Dr. [1](#)
Baldrige, Milton Columbus [2](#)
Baldrige, Milton [3](#), [7](#)
Baldrige, Stella [1](#)
Baldrige, Viola [1](#)
Baldrige, Vira Boarman [3](#)
Baldrige, Vira [4](#), [5](#), [6](#)
Baldrige, William [1](#)
Bankhead, Talullah [3](#)
Bankhead, William [3](#)
Beasley, James A., Dr. [1](#)
Boarman, Alice [2](#)
Boarman, Vira [2](#)
Bolling, Florence [3](#)
Bolling, John M., Mrs. [3](#)
Boswell, Alberta [3](#)
Bowers, [6](#)
Bradley, [4](#)
Brandon, John D. [1](#)
Brendle, Joseph [4](#)
Brickell, Robert E., Mrs. [3](#)
Carpenter, J. A. [4](#)
Chapman, Elizabeth Humes [3](#), [5](#)
Chapman, [2](#)
Clanton, Turner, Mrs. [3](#)
Clemens, Jeremiah [1](#)
Cooper, Lawrence [1](#), [5](#)
Craig, Ann B. [7](#)
Craig, Ann Baldrige [7](#)
Craig, Cary [7](#)
Craig, Preston [7](#)
Craig, Tony [7](#)
Cruse, Samuel R. [1](#)
Darwin, J. L. [1](#)
Darwin, Mattie [5](#)
Davis, Vina Wise [3](#), [7](#)
Davis, William Ward [7](#)
Dement, John J. [1](#)
Dillard, Amelia [5](#)
Fletcher, P. M., Sr., Dr. [1](#)
Gernard, James W. [6](#)
Goldman, J. F. [1](#)
Grayson, David [3](#), [5](#)
Halpin, John J. [6](#)
Halsey, C. H. [1](#)
Harris, S. W. [1](#)
Humphrey, Thomas I. [1](#)
Hundley, Oscar [2](#)
Huntsville, AL [1](#)
Hutchens, W. T. [3](#)
Ireland, Norma Olin [6](#)
Irwin, M. F. [4](#)
Johnson, Ella M. [1](#)
Keogh, [6](#)
Lacey, Walker [2](#)
Landon, Alfred [6](#)
Lane, Hector, Mrs. [3](#)
Laughlin, [6](#)
Lowry, Samuel H., Dr. [1](#)
Martin, Joseph [1](#)
Mastin, Charles J., Colonel [1](#)
McAllister, Elizabeth [6](#)
McCormick, [2](#)
McDonnell, Henry, Dr. [1](#)
McDonnell, Archibald [1](#)
Moore, William H., Judge [1](#)
Neeley, Anderson P. [1](#)
Neeley, Eliza M. [1](#)
Neeley, Narcissa Caroline [1](#)
Newcomb, Sophie [6](#)
Orman, J. O. [4](#)
Pitkin, [2](#)
Pollard, H. C. [4](#)
Rand, Jackson [1](#)
Rand, Olive Davis [1](#)
Redding, [2](#)
Rhett, Harry [5](#)
Rison, John L. [1](#)
Rison, William R. [1](#)
Robinson, Murray [1](#)
Roosevelt, Franklin [6](#)
Schiffman, Mrs. [1](#)
Shaver, Charles, Sr. [1](#)
Shaver, Helen [1](#)
Shaver, Mary Gilbert [1](#)
Spragins, R. E. [3](#)
St. John, [6](#)
Tappey, Francis, Dr. [5](#)
Terry, E. T. [4](#)
VanValkenburgh, [3](#)
Walker, Grace [2](#)
Warwick, Mary [1](#)
Weil, H. [1](#)
Westmoreland, Hawkins D., Dr. [2](#)

Whitehouse, Norman [2](#)
Whitehouse, Vira Boarman [5](#)
Whitehouse, [6](#)
Whitten, S. L. [1](#)
Williamson, E. O. [4](#)
Wilson, Robert H. [1](#)

Wilson, Woodrow, President [4](#)
Wise, Betty Jane [7](#)
Wise, Louis [5](#), [6](#)
Wise, Vina [3](#)
Wynn, A. M. [1](#)

Frances Cabaniss Roberts Collection

Preferred Citation: Frances Cabaniss Roberts Collection, Archives and Special Collections, M. Louis Salmon Library, University of Alabama in Huntsville, Huntsville, AL.

Collection Scope and Content: The Collection of 114 Linear ft. includes a total of 156 Archival Boxes. The Frances Cabaniss Roberts collection covers the historical records of the Cabaniss Roberts family. This collection contains extensive correspondence records of the Cabaniss Roberts family circa 1830 to 1930.

Archives/Special Collections Access Restrictions: None

Conditions Governing Use: This material may be protected under U. S. Copyright Law (Title 17, U.S. Code) which governs the making of photocopies or reproductions of copyrighted materials. You may use the digitized material for private study, scholarship, or research. Though the University of Alabama in Huntsville Archives and Special Collections has physical ownership of the material in its collections, in some cases we may not own the copyright to the material. It is the patron's obligation to determine and satisfy copyright restrictions when publishing or otherwise distributing materials found in our collections.

Provenance: Gift of Johanna Shields on October 28, 2006.



THE UNIVERSITY OF
ALABAMA IN HUNTSVILLE

**The UAH Archives and Special Collections
M. Louis Salmon Library**