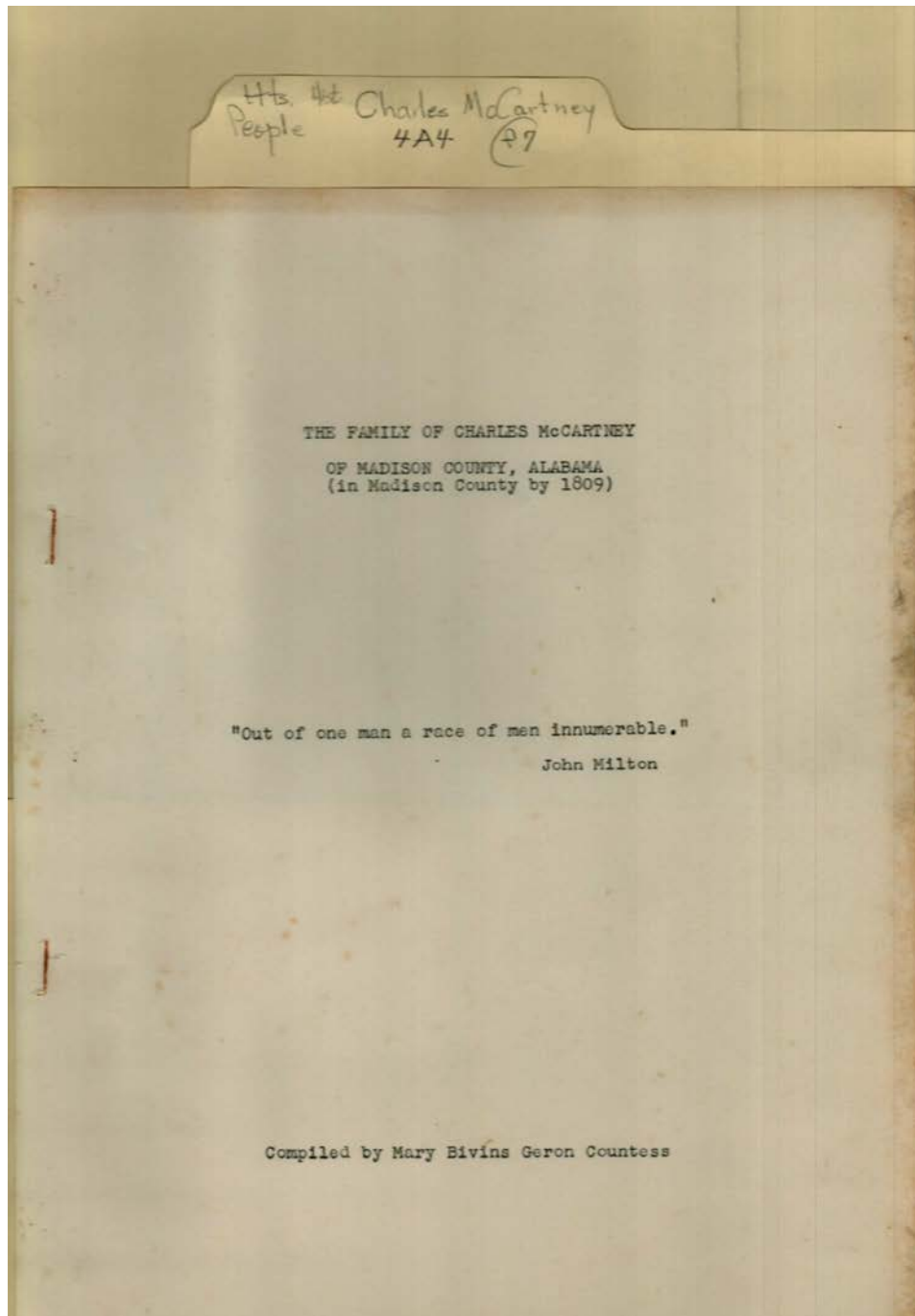


Frances Cabaniss Roberts Collection: Series 4, Subseries A, Box 4, Folder 7

McCartney, Charles

Image 1 r04a04-07-000-0207 [Contents](#) [Index](#) [About](#)



Names:

Countess, Mary
Bivins Geron

McCartney, Charles

The Family of
Charles McCartney

Places:

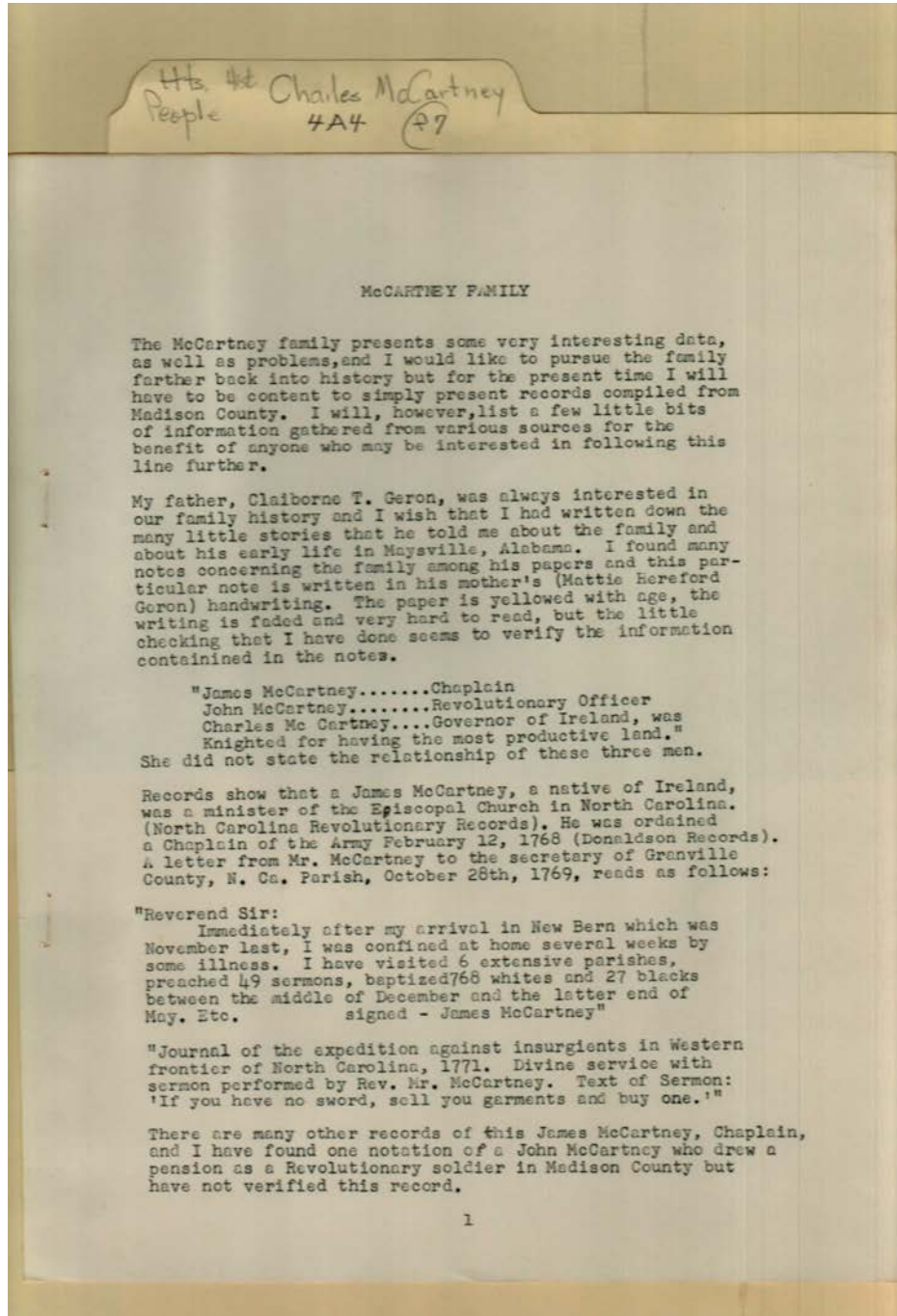
Madison Co., AL

Types:

genealogy

Dates:

1809



Names:

Geron, Claiborne T.

Geron, Mattie
Hereford

McCartney, Charles
McCartney, James

McCartney, John

Places:

Ireland

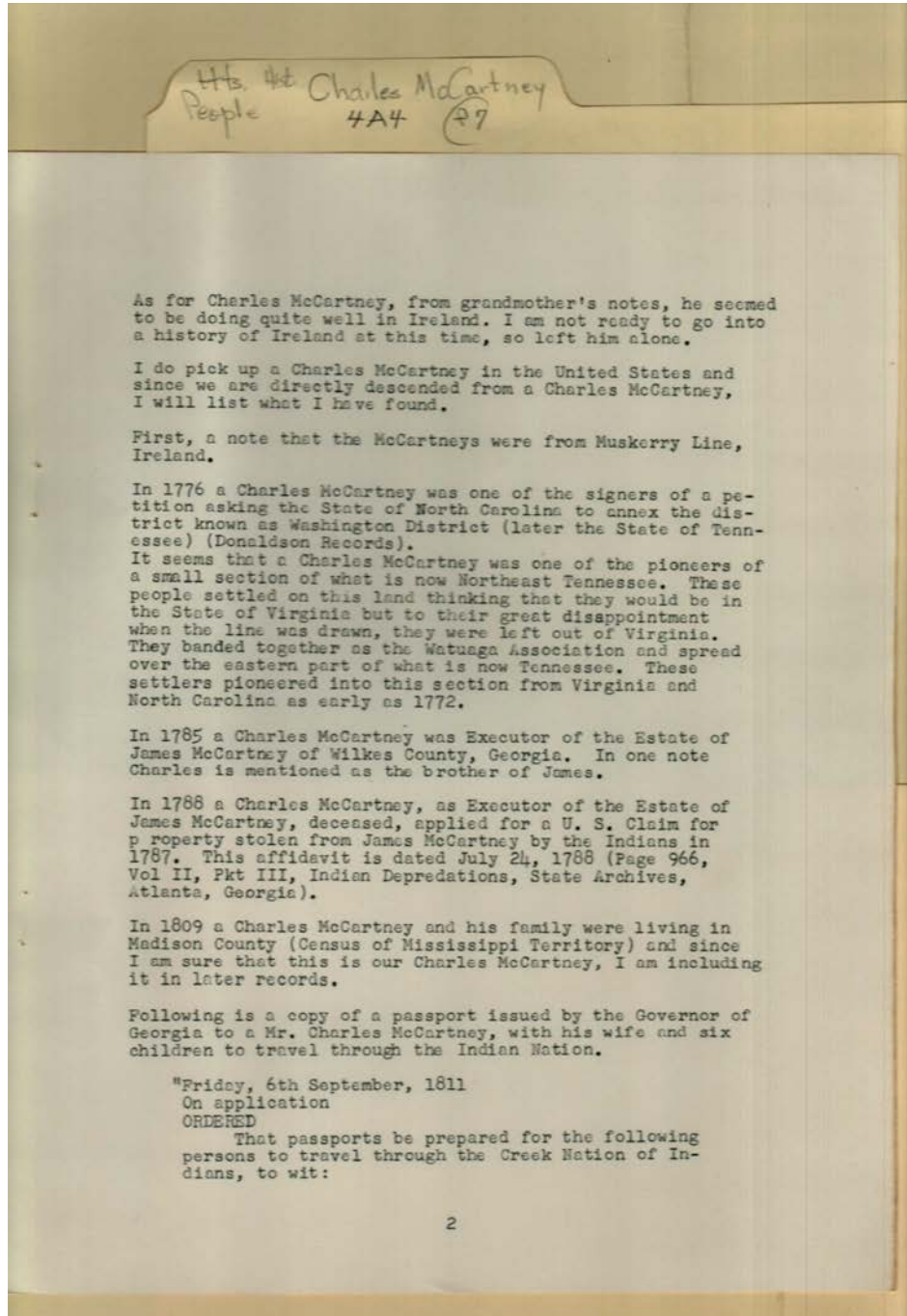
Madison Co., AL

Types:

genealogy

McCartney, Charles

Image 3 r04a04-07-000-0209 [Contents](#) [Index](#) [About](#)



Names:

McCartney, Charles

McCartney, James

Watuaga Association

Places:

Ireland

Madison Co., Miss.
Terr.

North Carolina
Wilkes Co., GA

Types:

genealogy

Dates:

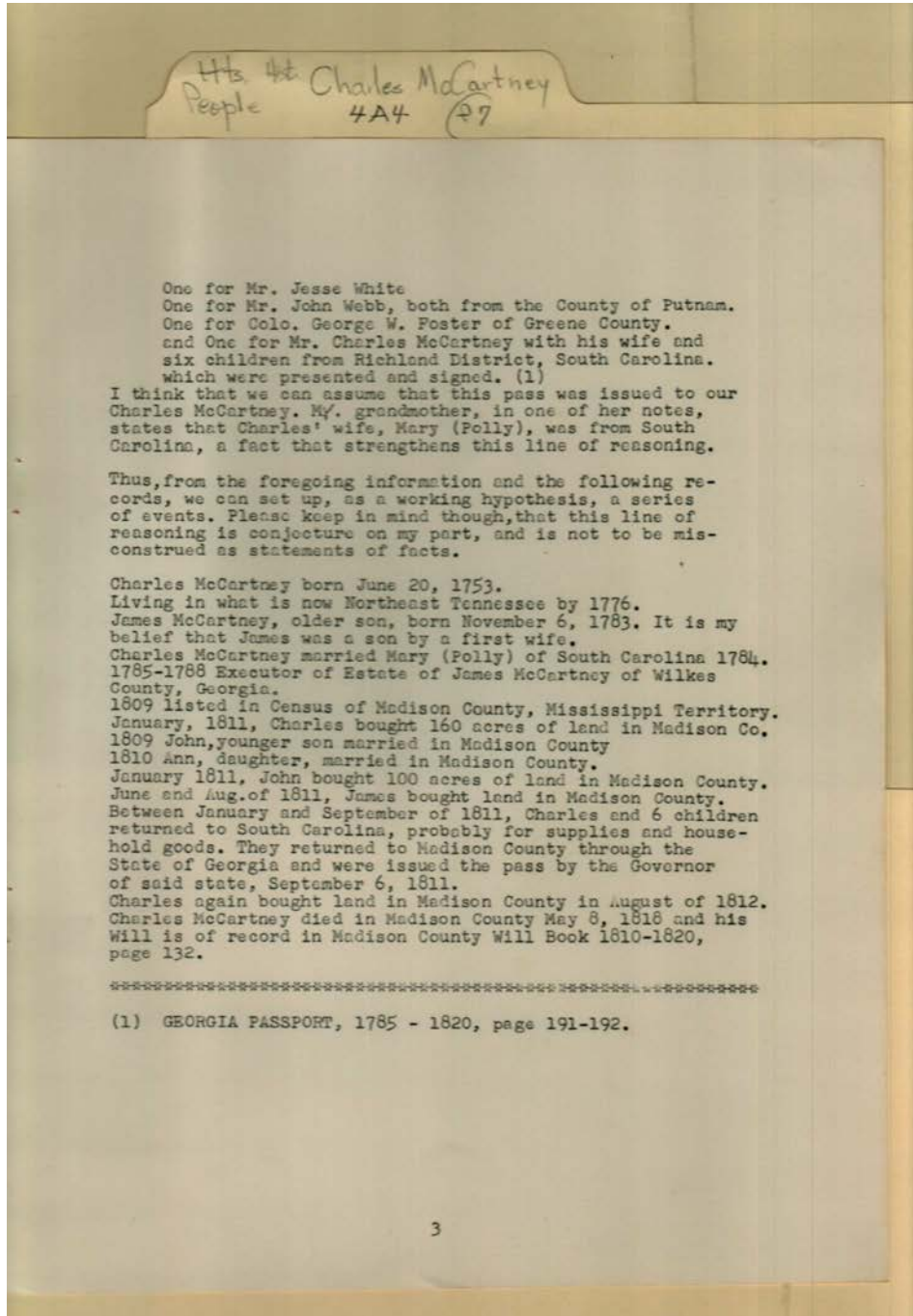
1776

1785

1809

McCartney, Charles

Image 4 r04a04-07-000-0210 [Contents](#) [Index](#) [About](#)



Names:

McCartney, Ann
McCartney, Charles

McCartney, James
McCartney, John

McCartney, Mary
(Polly)

Webb, John
White, Jesse

Places:

Madison Co., Miss.
Terr.

Putnam C., GA
Richland District, SC

Types:

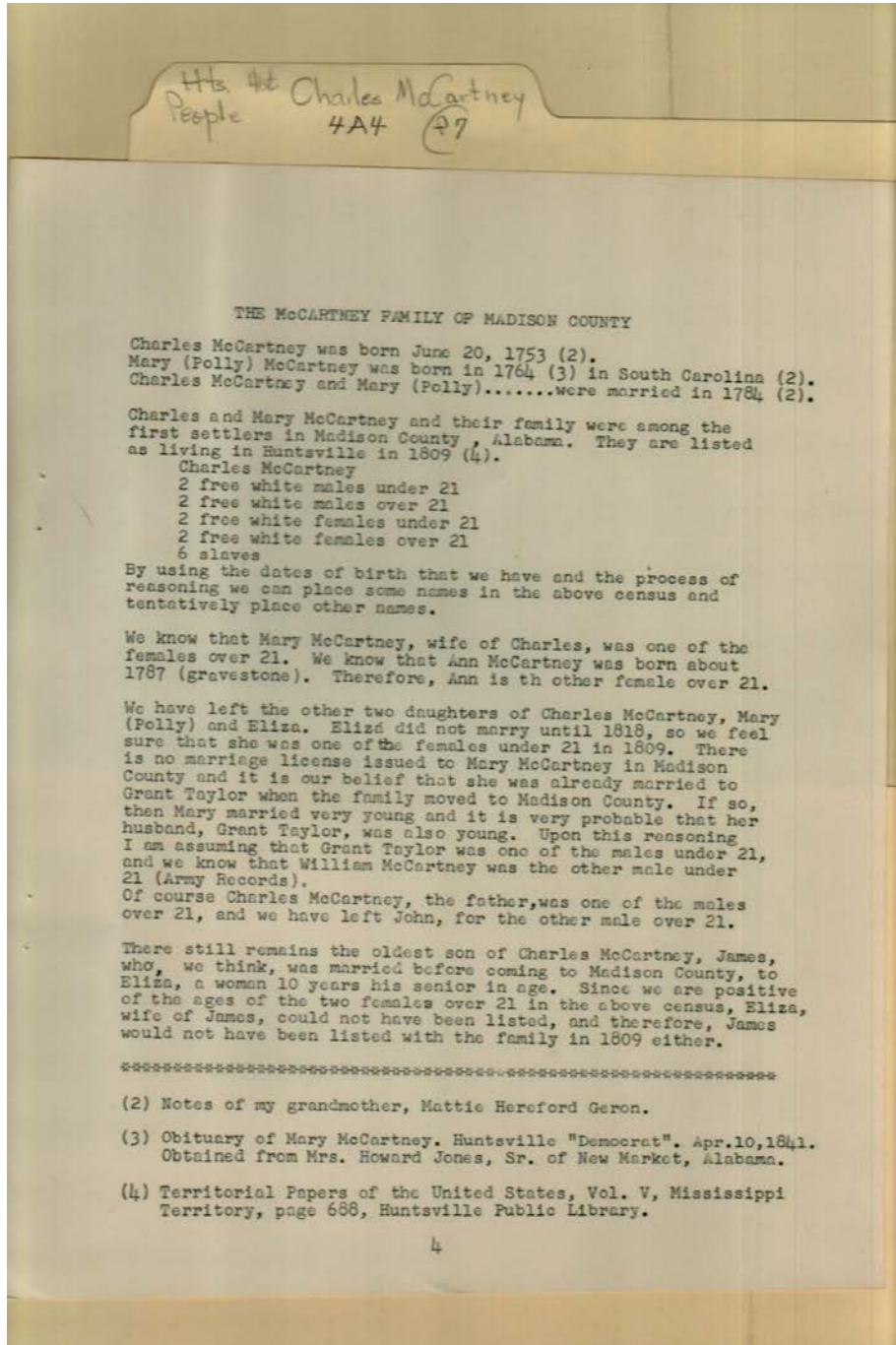
genealogy

Dates:

1809

1810

1811



Names:

- | | | | |
|-----------------------------|--------------------|--------------------|----------------------------------------------|
| Geron, Mattie | McCartney, Ann | McCartney, Mary | The McCartney
Family of Madison
County |
| Hereford | McCartney, Charles | (Polly) | |
| Jones, Howard, Mrs.,
Sr. | McCartney, Eliza | McCartney, William | |
| | McCartney, James | Taylor, Grant | |

Places:

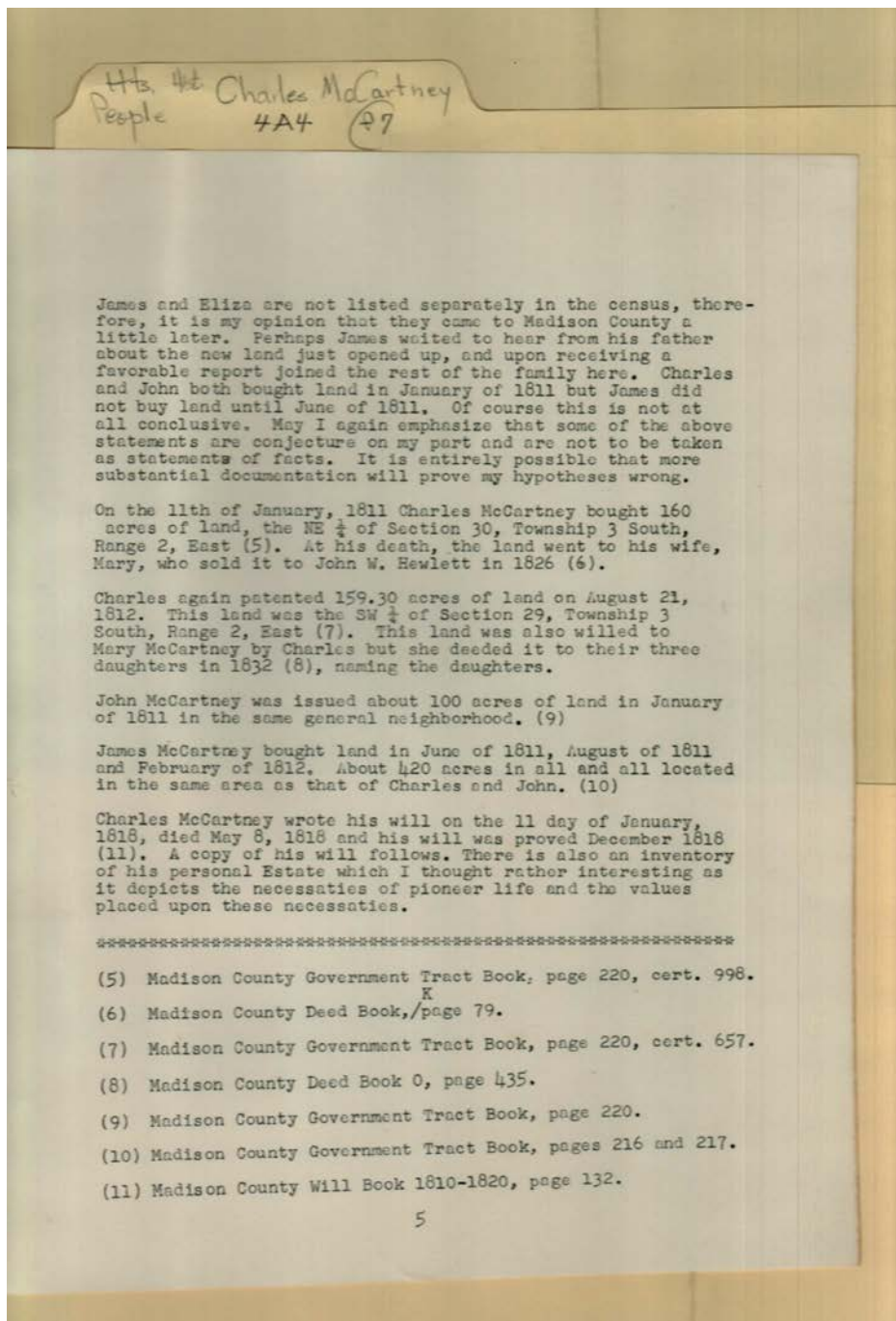
- | | |
|-----------------|----------------|
| Madison Co., AL | New Market, AL |
|-----------------|----------------|

Types:

- | | |
|----------|-----------|
| footnote | genealogy |
|----------|-----------|

McCartney, Charles

Image 6 r04a04-07-000-0212 [Contents](#) [Index](#) [About](#)



Names:

Hewlett, John W.
McCartney, Charles

McCartney, Eliza
McCartney, James

McCartney, John

McCartney, Mary
(Polly)

Places:

Madison Co., AL

Types:

genealogy

Dates:

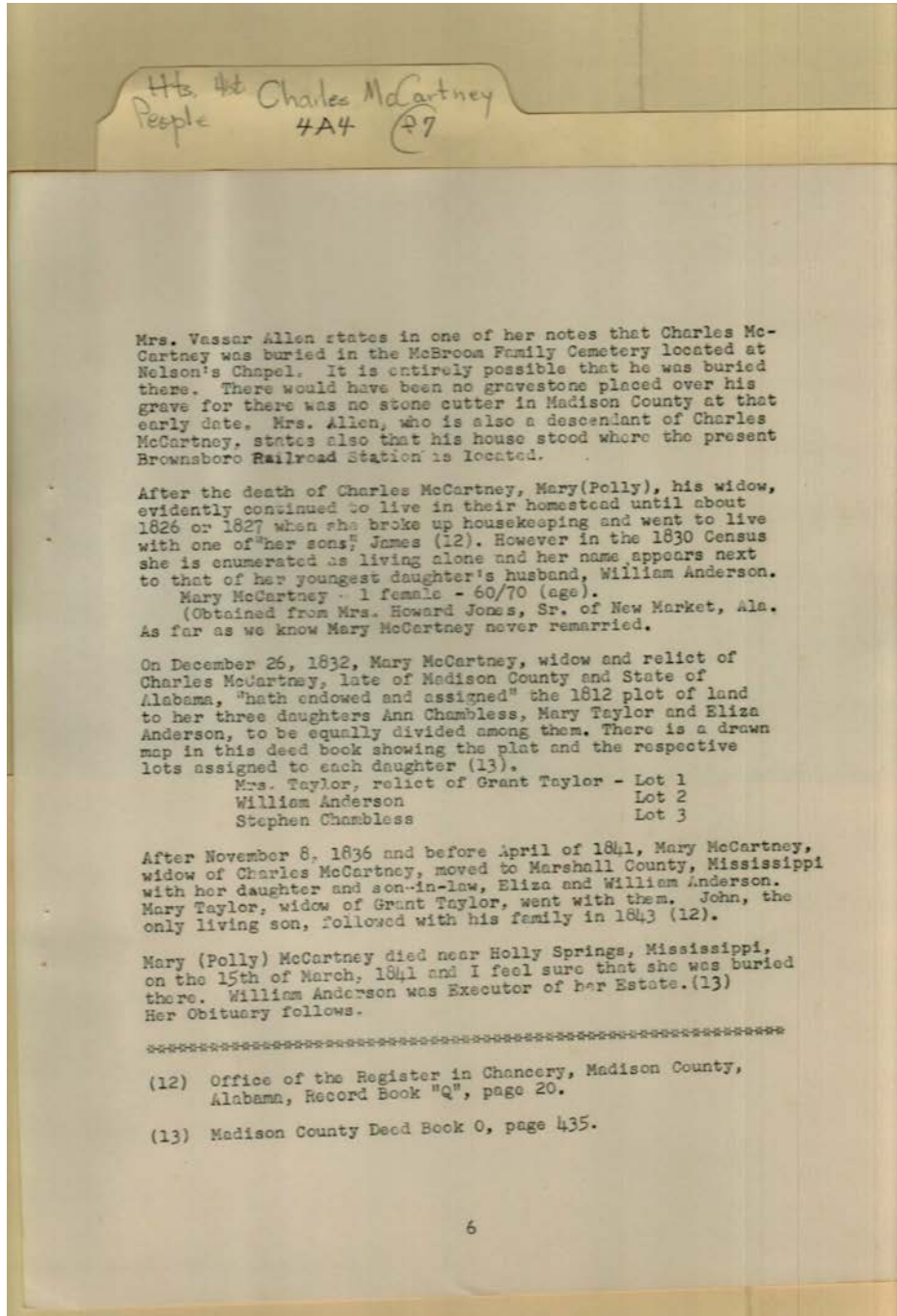
1811-1812

1818

1826

McCartney, Charles

Image 7 r04a04-07-000-0213 [Contents](#) [Index](#) [About](#)



Names:

Allen, Vassar, Mrs.
Anderson, Eliza
McCartney
Anderson, William

Brownsboro Railroad
Station
Chambless, Ann
McCartney

Jones, Howard, Mrs.,
Sr.
McCartney, Charles
McCartney, James

McCartney, Mary
(Polly)
Taylor, Grant
Taylor, Mary
McCartney

Places:

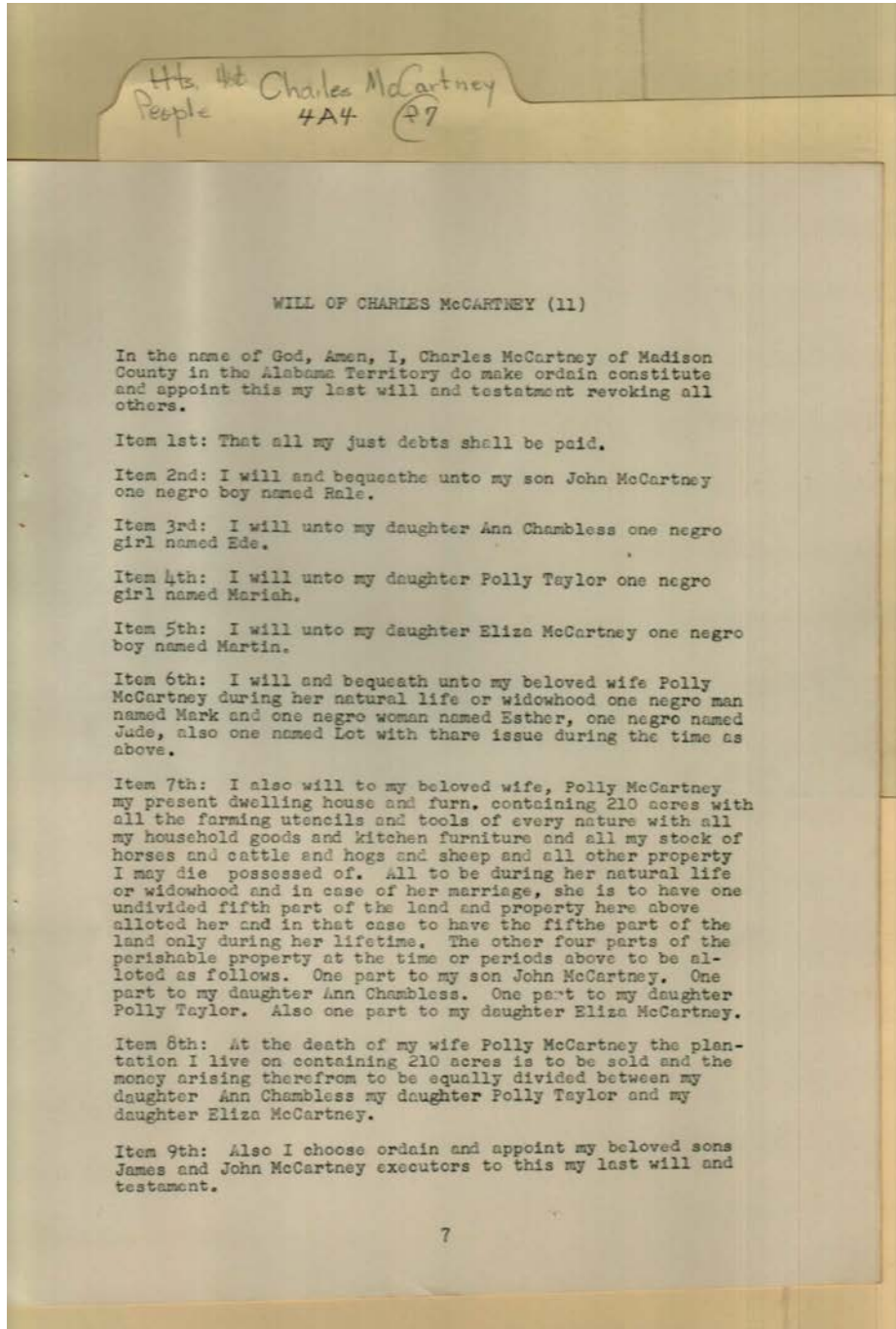
Madison Co., AL

Types:

genealogy

Dates:

1832



Names:

, Ede (slave)
, Mariah (slave)
, Martin (slave)

, Rale (slave)
Chambless, Ann
McCartney, Charles

McCartney, Eliza
McCartney, James
McCartney, John

McCartney, Mary
(Polly)
Taylor, Polly

Places:

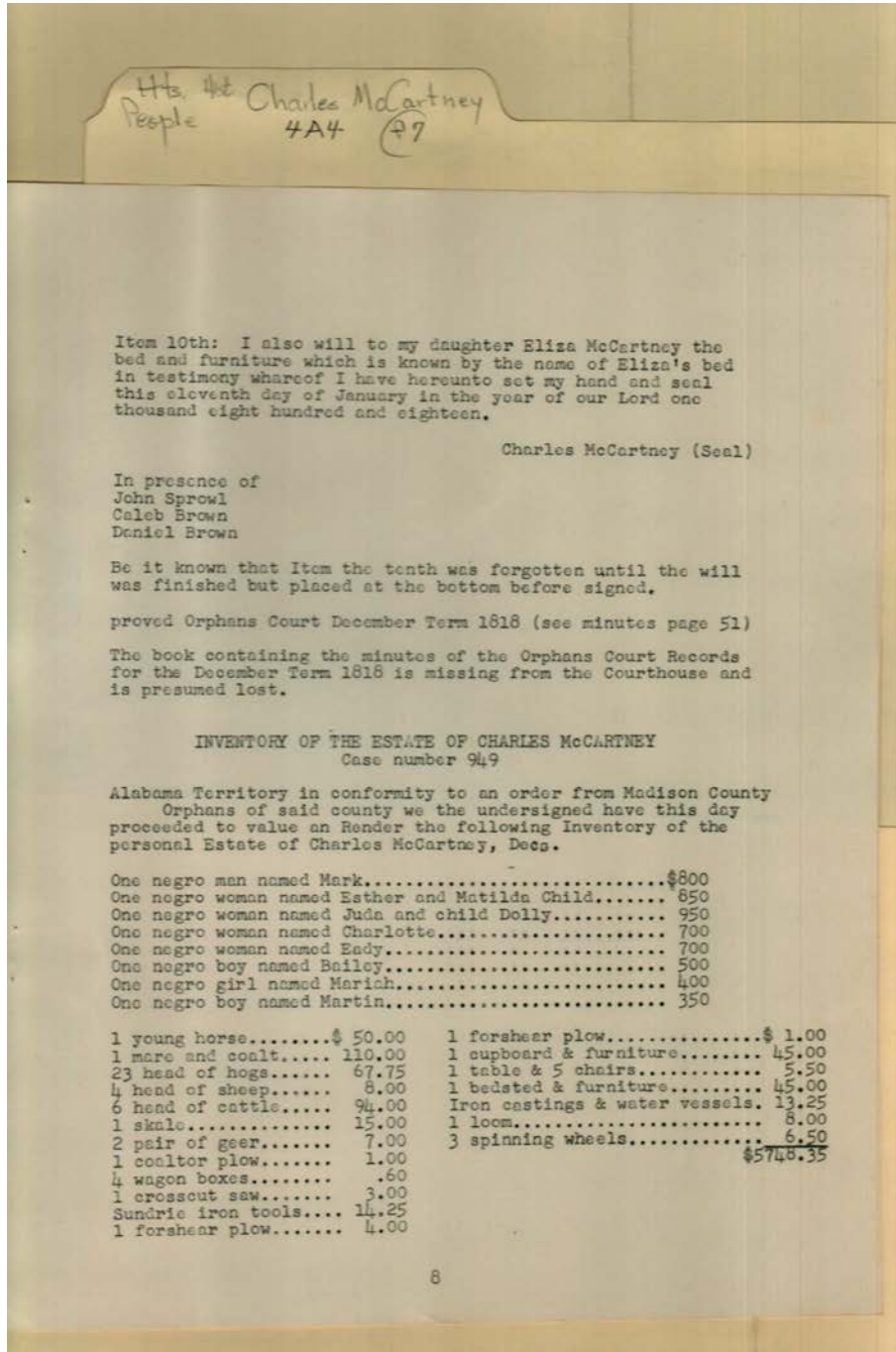
Madison Co.,
Alabama Terr.

Types:

will

Dates:

Jan 11, 1818



Names:

- | | | | |
|---------------------|-------------------|--------------------|--------------|
| , Bailey (slave) | , Mariah (slave) | Brown, Caleb | Sprowl, John |
| , Charlotte (slave) | , Mark (slave) | Brown, Daniel | |
| , Eady (slave) | , Martin (slave) | McCartney, Charles | |
| , Esther (slave) | , Matilda (slave) | McCartney, Eliza | |

Places:

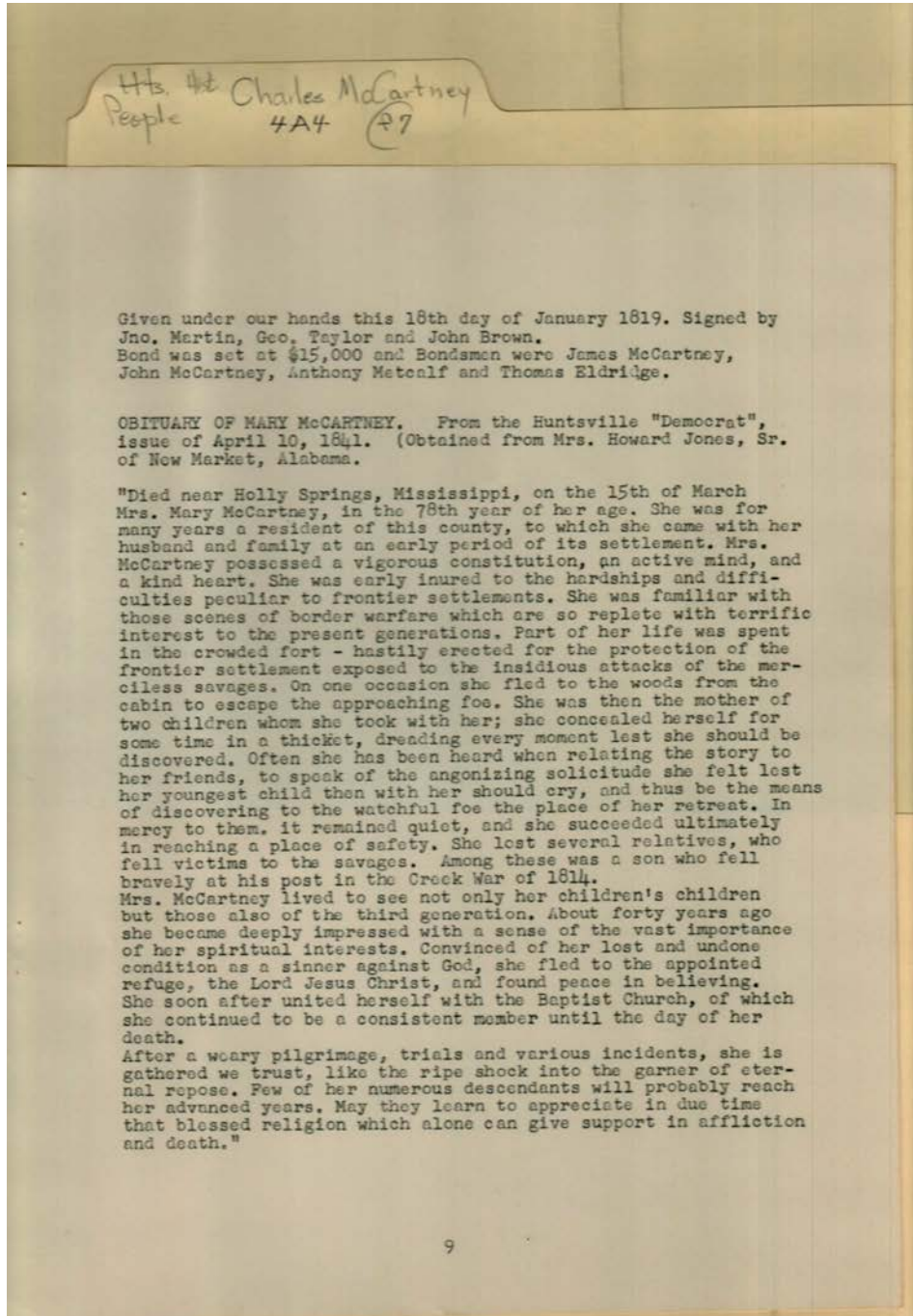
Madison Co.,
Alabama Terr.

Types:

inventory will

Dates:

Jan 11, 1818 Jan 18, 1819



"Democrat" newspaper

Names:

Brown, John	Martin, John	McCartney, Mary,
Eldridge, Thomas	McCartney, James	Mrs.
Jones, Howard, Mrs., Sr.	McCartney, John	Metcalf, Anthony
		Taylor, George

Places:

Huntsville, AL	Madison Co., Alabama Terr.	New Market, AL
----------------	-------------------------------	----------------

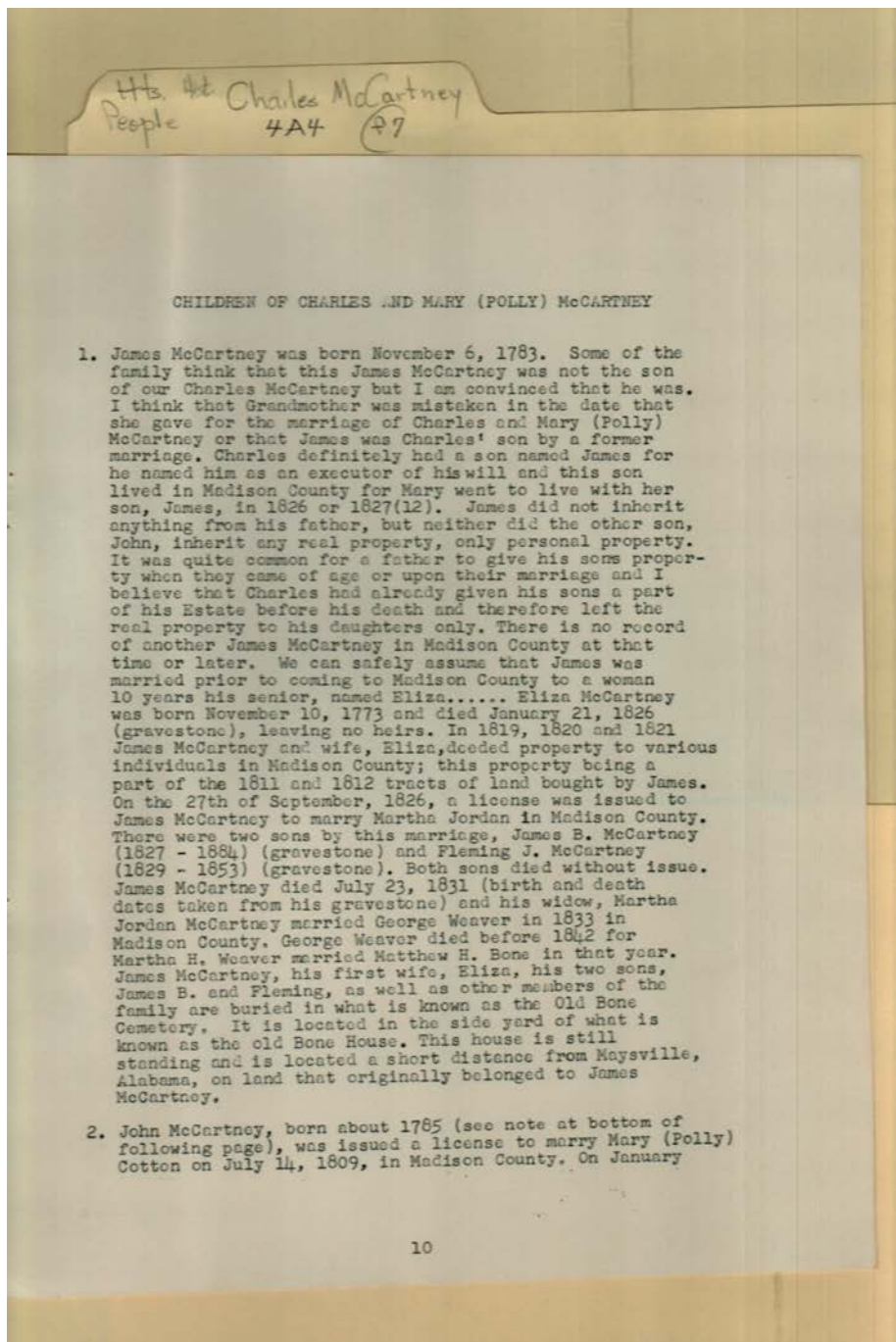
Types:

inventory	note	obituary
-----------	------	----------

Dates:

April 10, 1841

Jan 18, 1819



Names:

Children of Charles
and Mary (Polly)
McCartney
Cotton, Mary (Polly)

McCartney, Charles
McCartney, Eliza
McCartney, Fleming
J.

McCartney, James
McCartney, James B.
McCartney, John

McCartney, Martha
Jordan
McCartney, Mary
(Polly)

Places:

Madison Co., AL

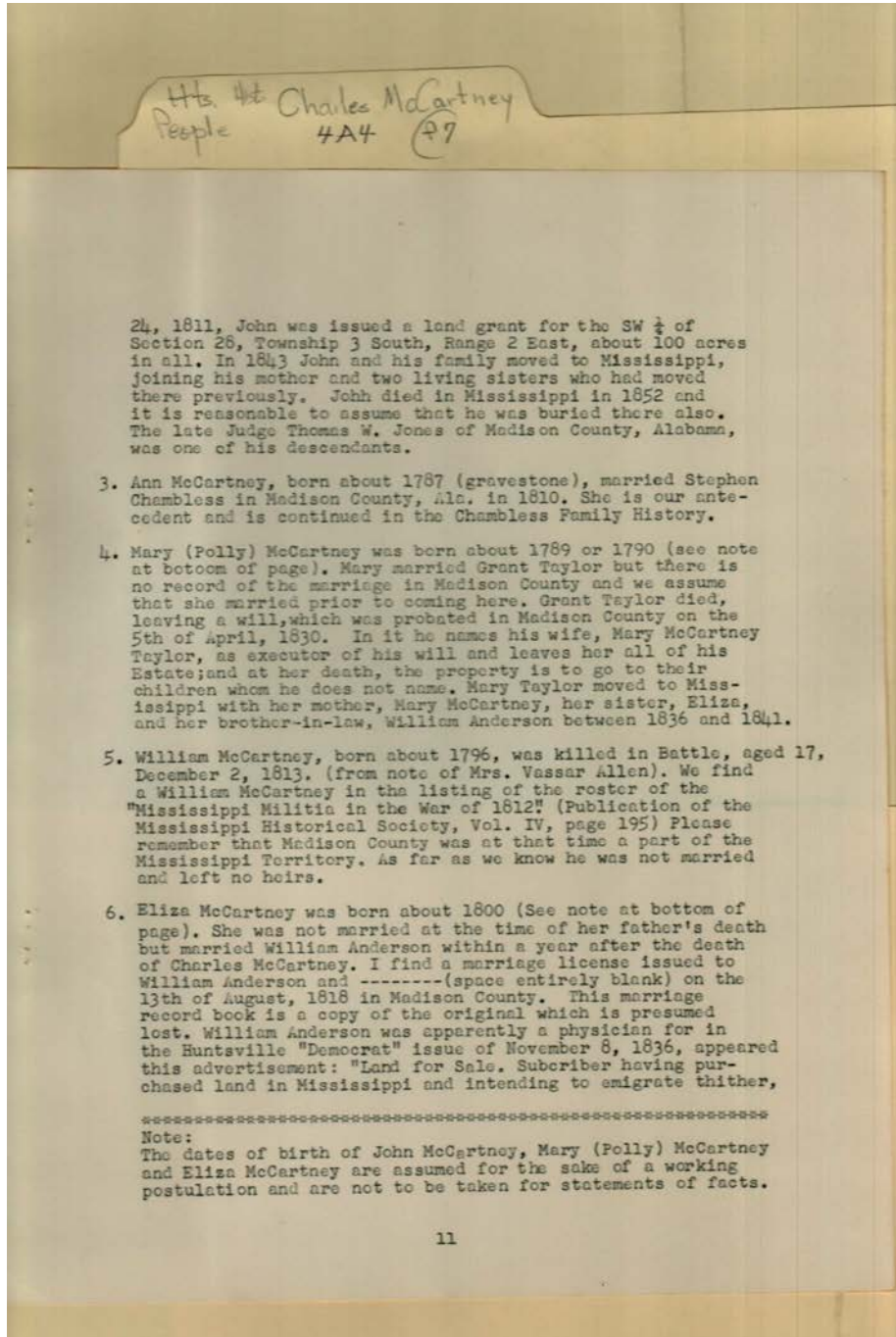
Types:

genealogy

Dates:

1809

McCartney, Charles



Names:

Allen, Vassar, Mrs.	Chambless, Stephen	McCartney, John	Taylor, Grant
Anderson, Eliza McCartney	Jones, Thomas W., Judge	McCartney, Mary, Mrs.	Taylor, Mary (Polly) McCartney
Anderson, William	McCartney, Ann	McCartney, William	

Places:

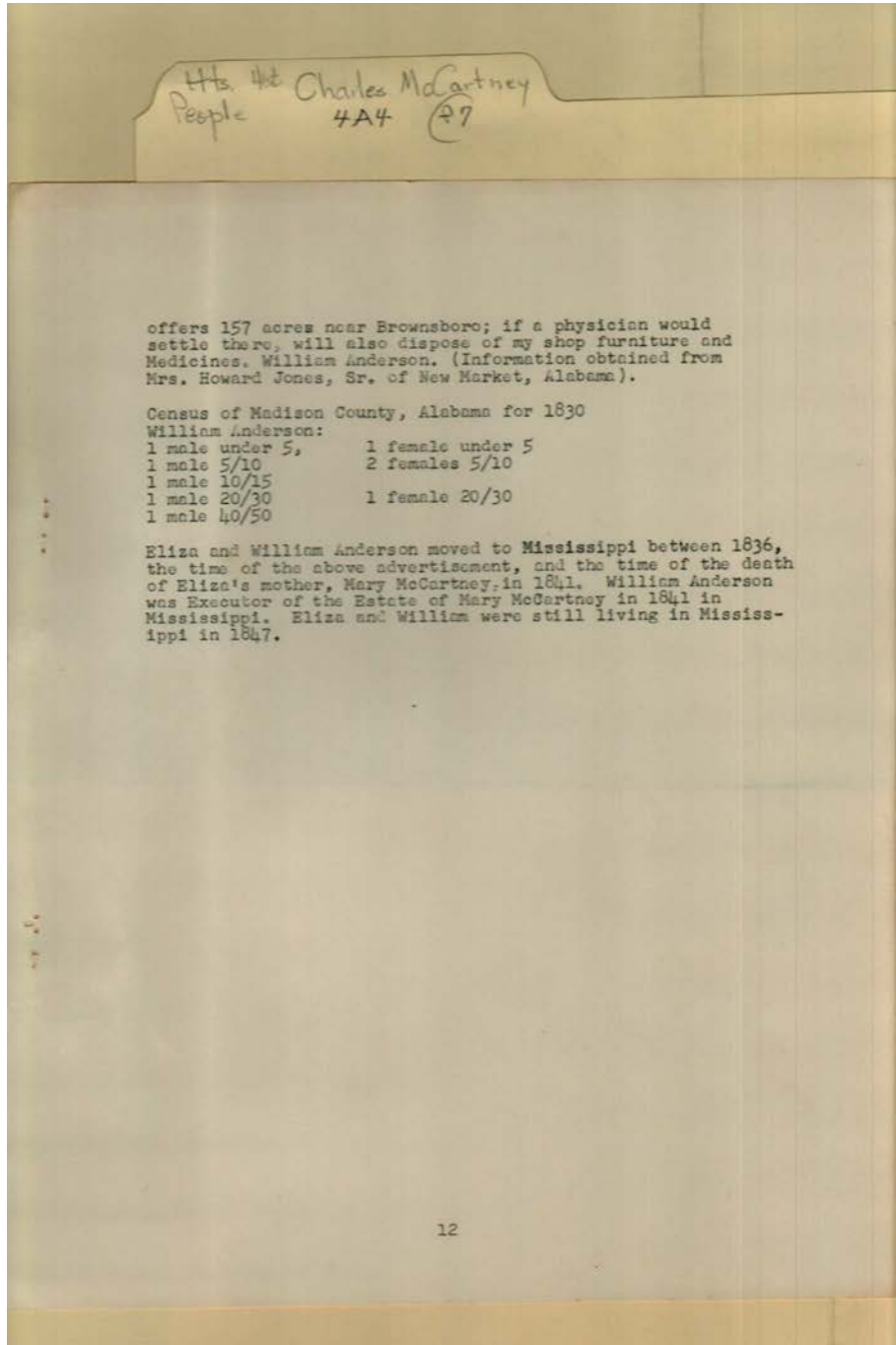
Madison Co., AL	Mississippi
-----------------	-------------

Types:

genealogy	note
-----------	------

Dates:

1810	1813	1852
------	------	------



Names:

Anderson, Eliza
McCartney

Anderson, William

Jones, Howard, Mrs.,
Sr.

McCartney, Mary,
Mrs.

Places:

Madison Co., AL

Mississippi

Types:

genealogy

note

Dates:

1830

1836

1841

Frances Cabaniss Roberts Collection: Series 4, Subseries A, Box 4, Folder 7

McCartney, Charles

[Contents](#) [Index](#) [About](#)

Table of Contents

[Image 1](#) (r04a04-07-000-0207)

[Image 2](#) (r04a04-07-000-0208)

[Image 3](#) (r04a04-07-000-0209)

[Image 4](#) (r04a04-07-000-0210)

[Image 5](#) (r04a04-07-000-0211)

[Image 6](#) (r04a04-07-000-0212)

[Image 7](#) (r04a04-07-000-0213)

[Image 8](#) (r04a04-07-000-0214)

[Image 9](#) (r04a04-07-000-0215)

[Image 10](#) (r04a04-07-000-0216)

[Image 11](#) (r04a04-07-000-0217)

[Image 12](#) (r04a04-07-000-0218)

[Image 13](#) (r04a04-07-000-0219)

[Table of Contents](#)

[Name & Place Index](#)

[About the Collection](#)

McCartney, Charles

[Contents](#) [Index](#) [About](#)

Name & Place Index

, Bailey (slave) [9](#)
, Charlotte (slave) [9](#)
, Eady (slave) [9](#)
, Ede (slave) [8](#)
, Esther (slave) [9](#)
, Mariah (slave) [8](#), [9](#)
, Mark (slave) [9](#)
, Martin (slave) [8](#), [9](#)
, Matilda (slave) [9](#)
, Rale (slave) [8](#)
Allen, Vassar, Mrs. [7](#), [12](#)
Anderson, Eliza McCartney [7](#), [12](#), [13](#)
Anderson, William [7](#), [12](#), [13](#)
Brown, Caleb [9](#)
Brown, Daniel [9](#)
Brown, John [10](#)
Brownsboro Railroad Station [7](#)
Chambless, Ann McCartney [7](#)
Chambless, Ann [8](#)
Chambless, Stephen [12](#)
Children of Charles and Mary (Polly) McCartney [11](#)
Cotton, Mary (Polly) [11](#)
Countess, Mary Bivins Geron [1](#)
Eldridge, Thomas [10](#)
Geron, Claiborne T. [2](#)
Geron, Mattie Hereford [2](#), [5](#)
Hewlett, John W. [6](#)
Huntsville, AL [10](#)
Ireland [2](#), [3](#)
Jones, Howard, Mrs., Sr. [5](#), [7](#), [10](#), [13](#)
Jones, Thomas W., Judge [12](#)
Madison Co., Alabama Terr. [8](#), [9](#), [10](#)
Madison Co., AL [1](#), [2](#), [5](#), [6](#), [7](#), [11](#), [12](#), [13](#)
Madison Co., Miss. Terr. [3](#), [4](#)
Martin, John [10](#)
McCartney, Ann [4](#), [5](#), [12](#)
McCartney, Charles [1](#), [2](#), [3](#), [4](#), [5](#), [6](#), [7](#), [8](#), [9](#), [11](#)
McCartney, Eliza [5](#), [6](#), [8](#), [9](#), [11](#)
McCartney, Fleming J. [11](#)
McCartney, James B. [11](#)
McCartney, James [2](#), [3](#), [4](#), [5](#), [6](#), [7](#), [8](#), [10](#), [11](#)
McCartney, John [2](#), [4](#), [6](#), [8](#), [10](#), [11](#), [12](#)
McCartney, Martha Jordon [11](#)
McCartney, Mary (Polly) [4](#), [5](#), [6](#), [7](#), [8](#), [11](#)
McCartney, Mary, Mrs. [10](#), [12](#), [13](#)
McCartney, William [5](#), [12](#)
Metcalf, Anthony [10](#)
Mississippi [12](#), [13](#)
New Market, AL [5](#), [10](#)
North Carolina [3](#)
Putnam C., GA [4](#)
Richland District, SC [4](#)
Sprowl, John [9](#)
Taylor, George [10](#)
Taylor, Grant [5](#), [7](#), [12](#)
Taylor, Mary (Polly) McCartney [12](#)
Taylor, Mary McCartney [7](#)
Taylor, Polly [8](#)
The Family of Charles McCartney [1](#)
The McCartney Family of Madison County [5](#)
Watuaga Association [3](#)
Webb, John [4](#)
White, Jesse [4](#)
Wilkes Co., GA [3](#)

Frances Cabaniss Roberts Collection

Preferred Citation: Frances Cabaniss Roberts Collection, Archives and Special Collections, M. Louis Salmon Library, University of Alabama in Huntsville, Huntsville, AL.

Collection Scope and Content: The Collection of 114 Linear ft. includes a total of 156 Archival Boxes. The Frances Cabaniss Roberts collection covers the historical records of the Cabaniss Roberts family. This collection contains extensive correspondence records of the Cabaniss Roberts family circa 1830 to 1930.

Archives/Special Collections Access Restrictions: None

Conditions Governing Use: This material may be protected under U. S. Copyright Law (Title 17, U.S. Code) which governs the making of photocopies or reproductions of copyrighted materials. You may use the digitized material for private study, scholarship, or research. Though the University of Alabama in Huntsville Archives and Special Collections has physical ownership of the material in its collections, in some cases we may not own the copyright to the material. It is the patron's obligation to determine and satisfy copyright restrictions when publishing or otherwise distributing materials found in our collections.

Provenance: Gift of Johanna Shields on October 28, 2006.



THE UNIVERSITY OF
ALABAMA IN HUNTSVILLE

**The UAH Archives and Special Collections
M. Louis Salmon Library**