

Names:

Bayer, Linda

Boundary and
Annexation Survey

City of Huntsville
Planning

Department
Paetz, Juergen

Places:

Huntsville, AL

Types:

cover

Dates:

1981-1983



Names:

Huntsville, City of

Places:

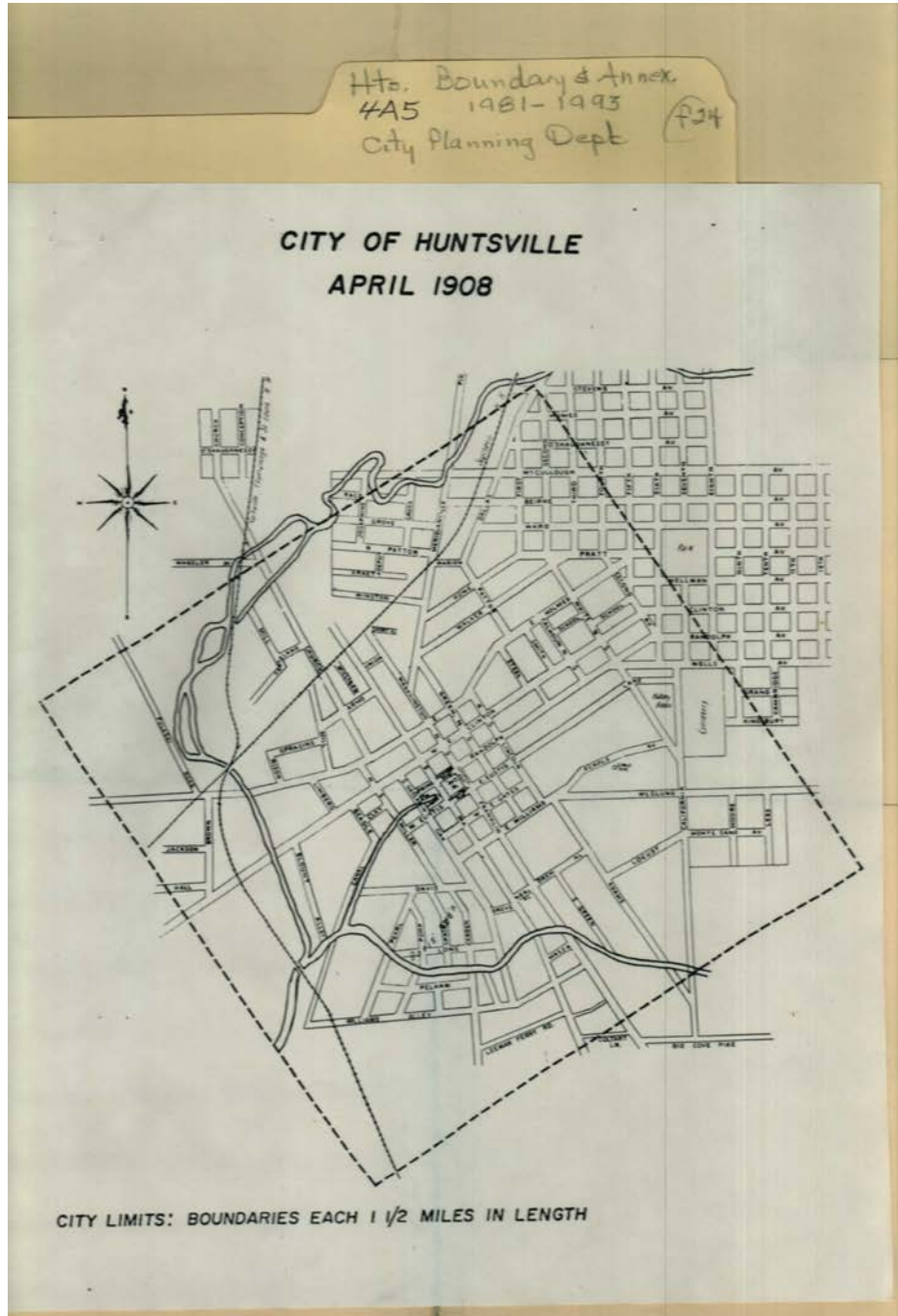
Huntsville, Madison
Co., AL

Types:

map

Dates:

1861



Names:

Huntsville, City of
Boundaries

Places:

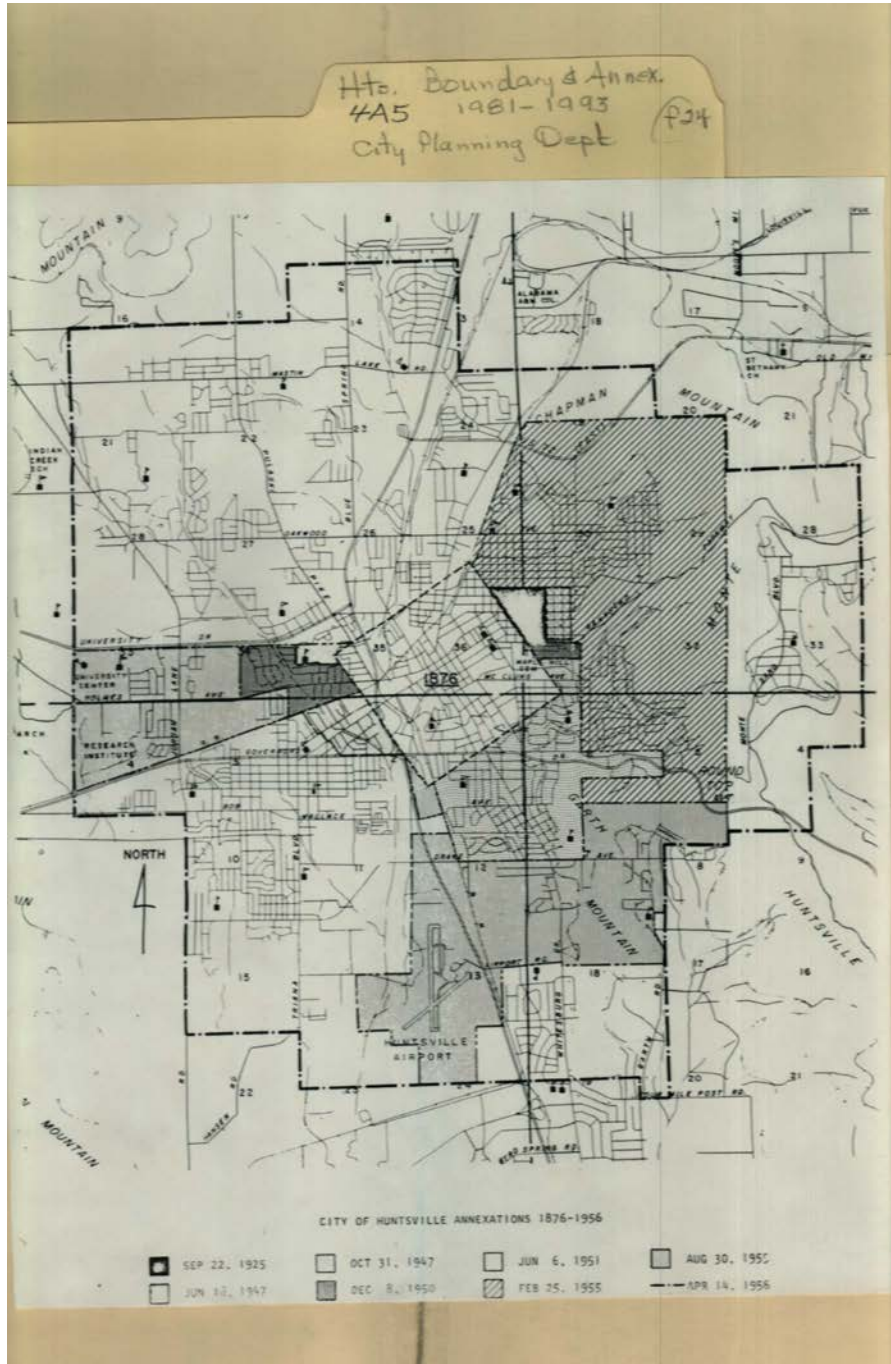
Huntsville, Madison
Co., AL

Types:

map

Dates:

April 1908



Names:

Huntsville, City of
Annexations 1876-

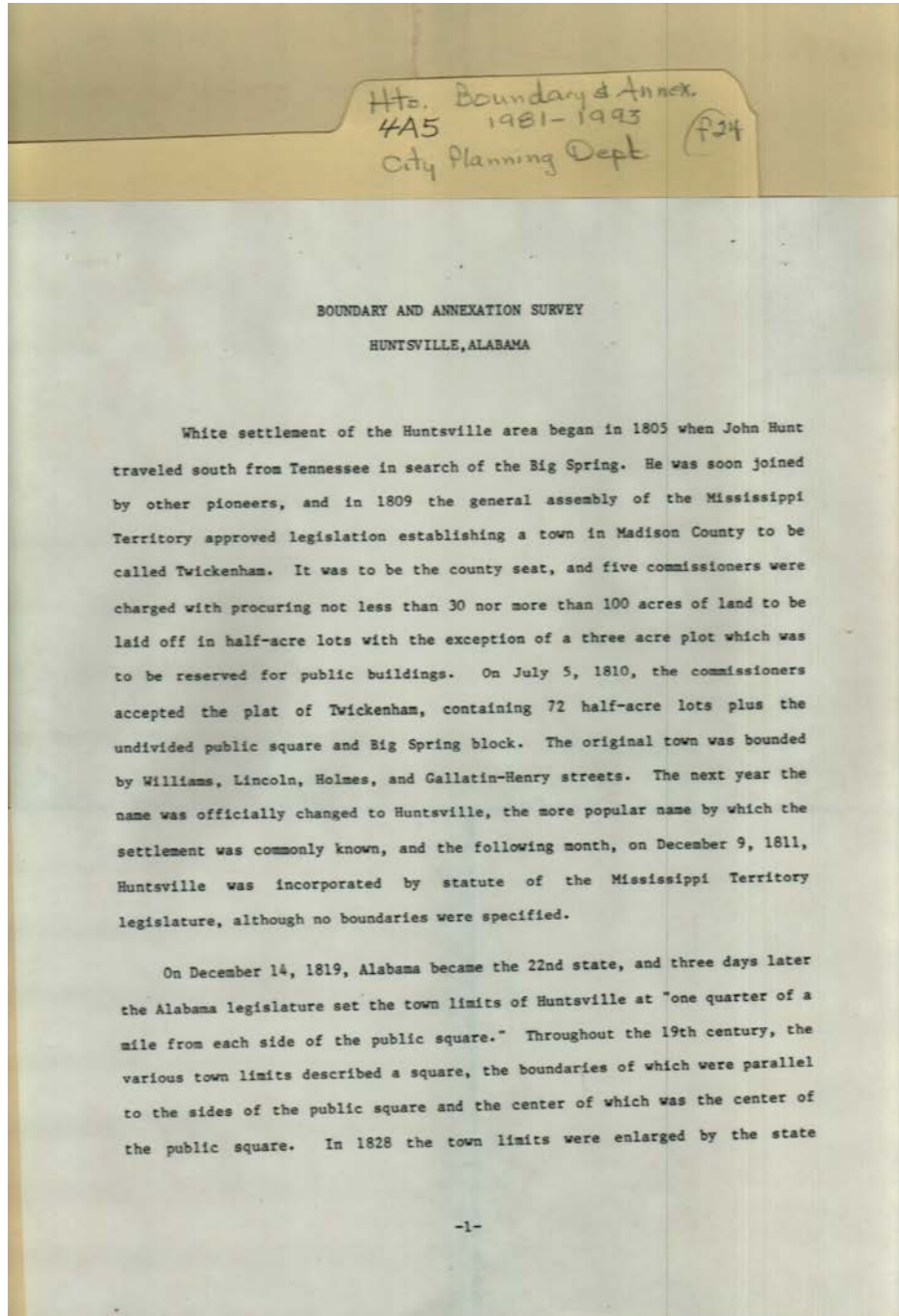
1956

Places:

Huntsville, Madison
Co., AL

Types:

map



Names:

Boundary and Annexation Survey Hunt, John

Places:

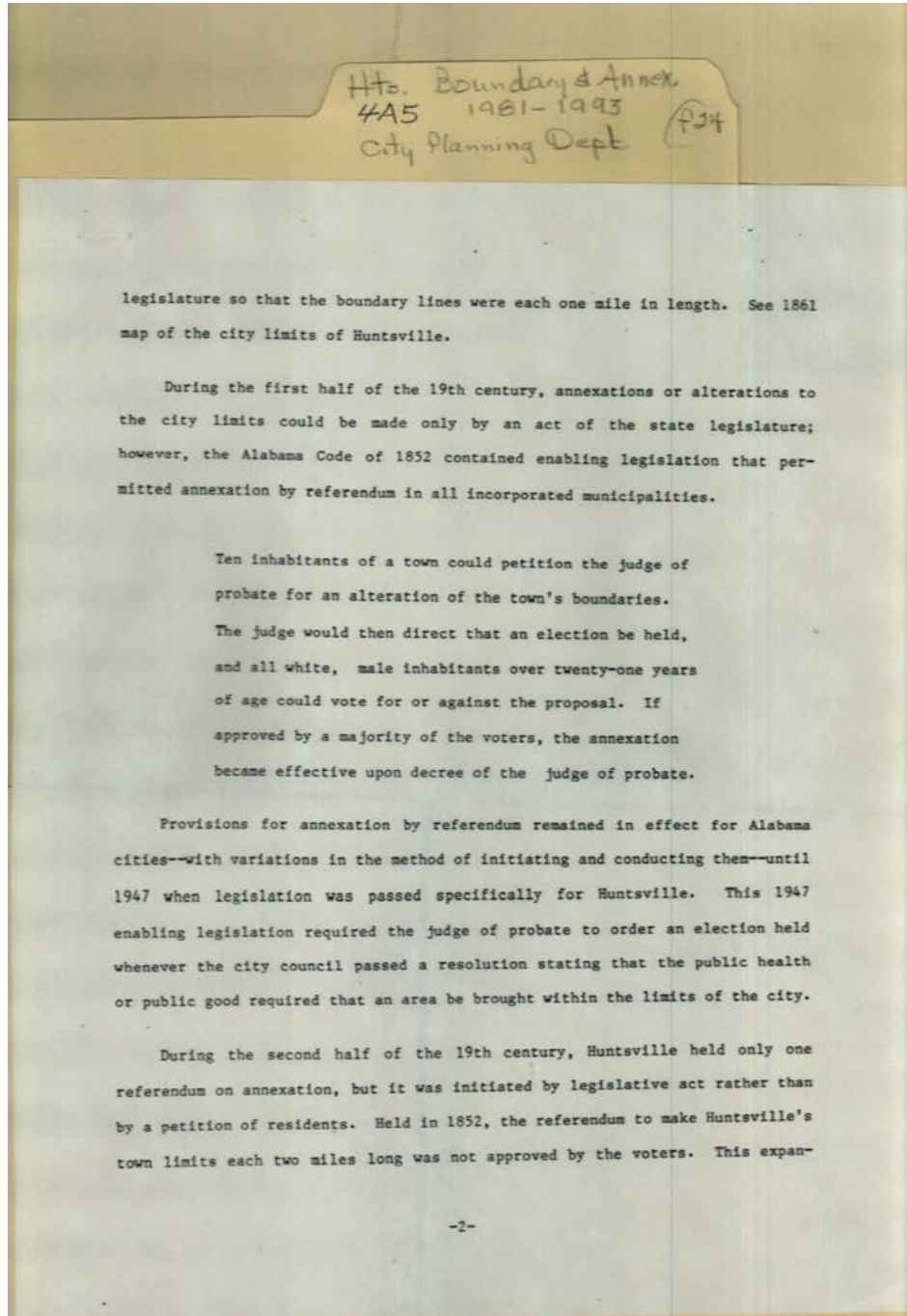
Huntsville, AL

Types:

essay

Dates:

1981-1983



Names:

Boundary and
Annexation Survey

Places:

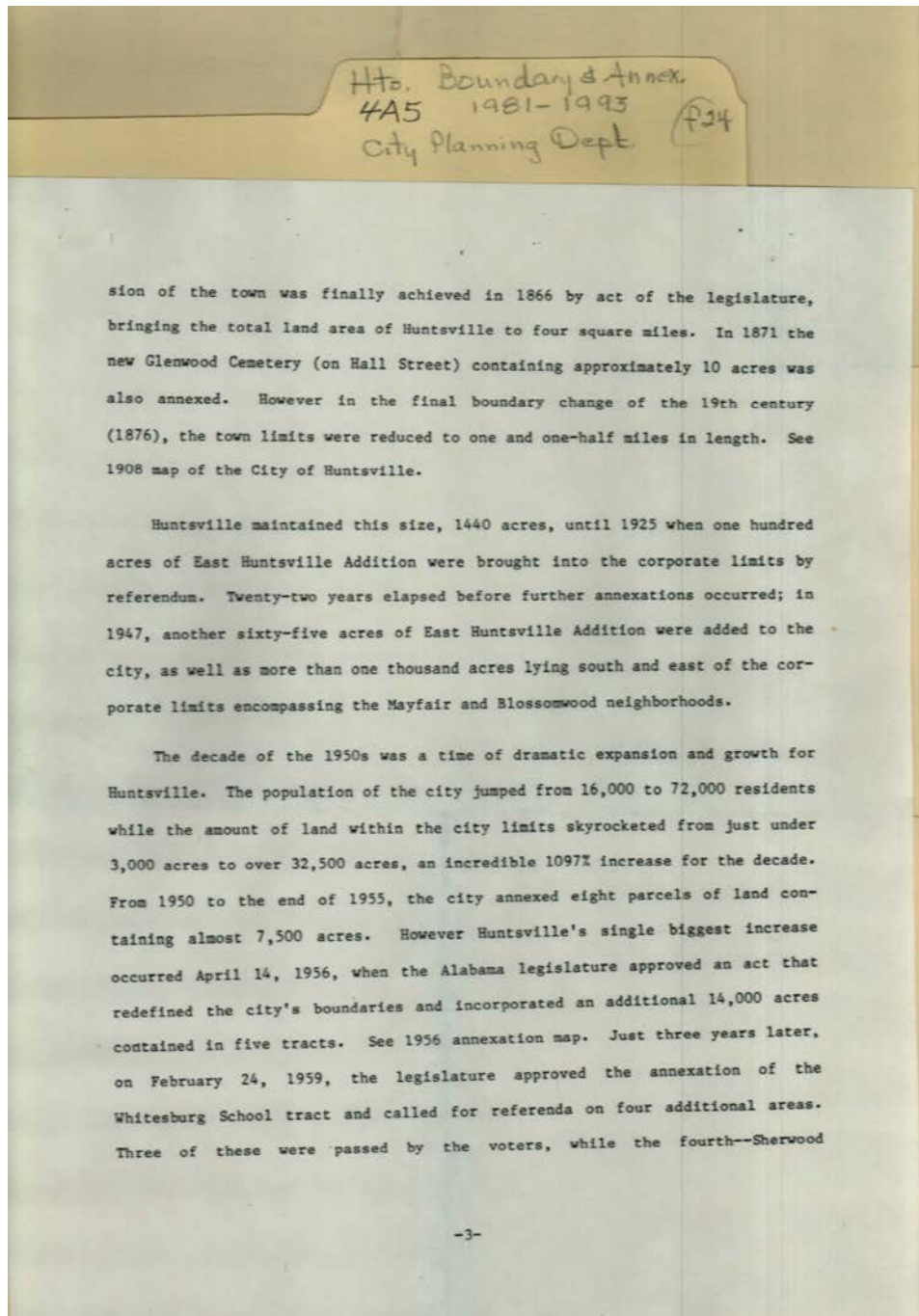
Huntsville, AL

Types:

essay

Dates:

1981-1983



Names:

Blossomwood
East Huntsville
Addition

Glenwood Cemetery
Mayfair
Sherwood Park

Whitesburg School
tract

Places:

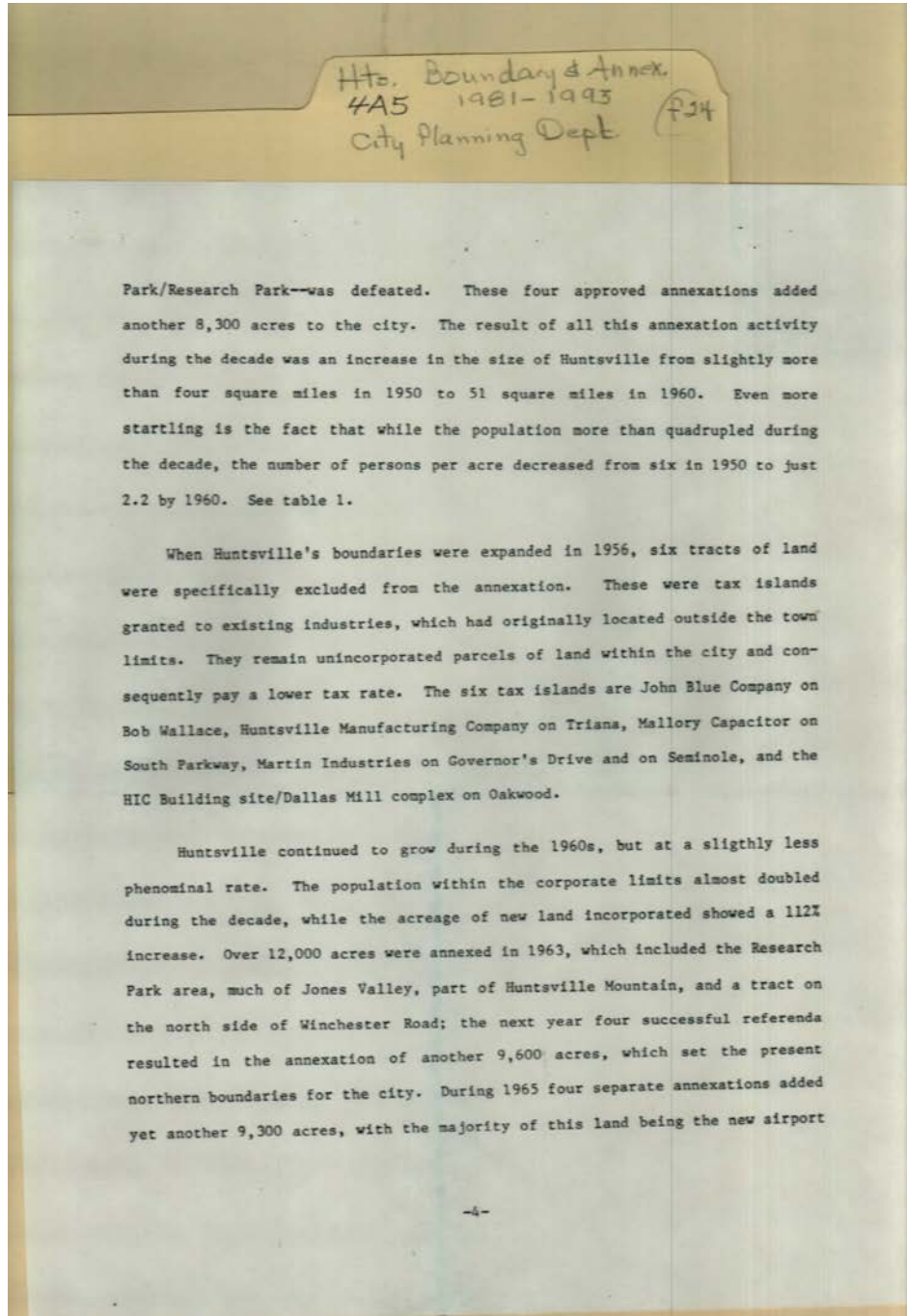
Huntsville, AL

Types:

essay

Dates:

1981-1983



Names:

HIC Building / Dallas
Mill

Huntsville
Manufacturing Co.
John Blue Company

Jones Valley
Mallory Capacitor
Martin Industries

Research Park

Places:

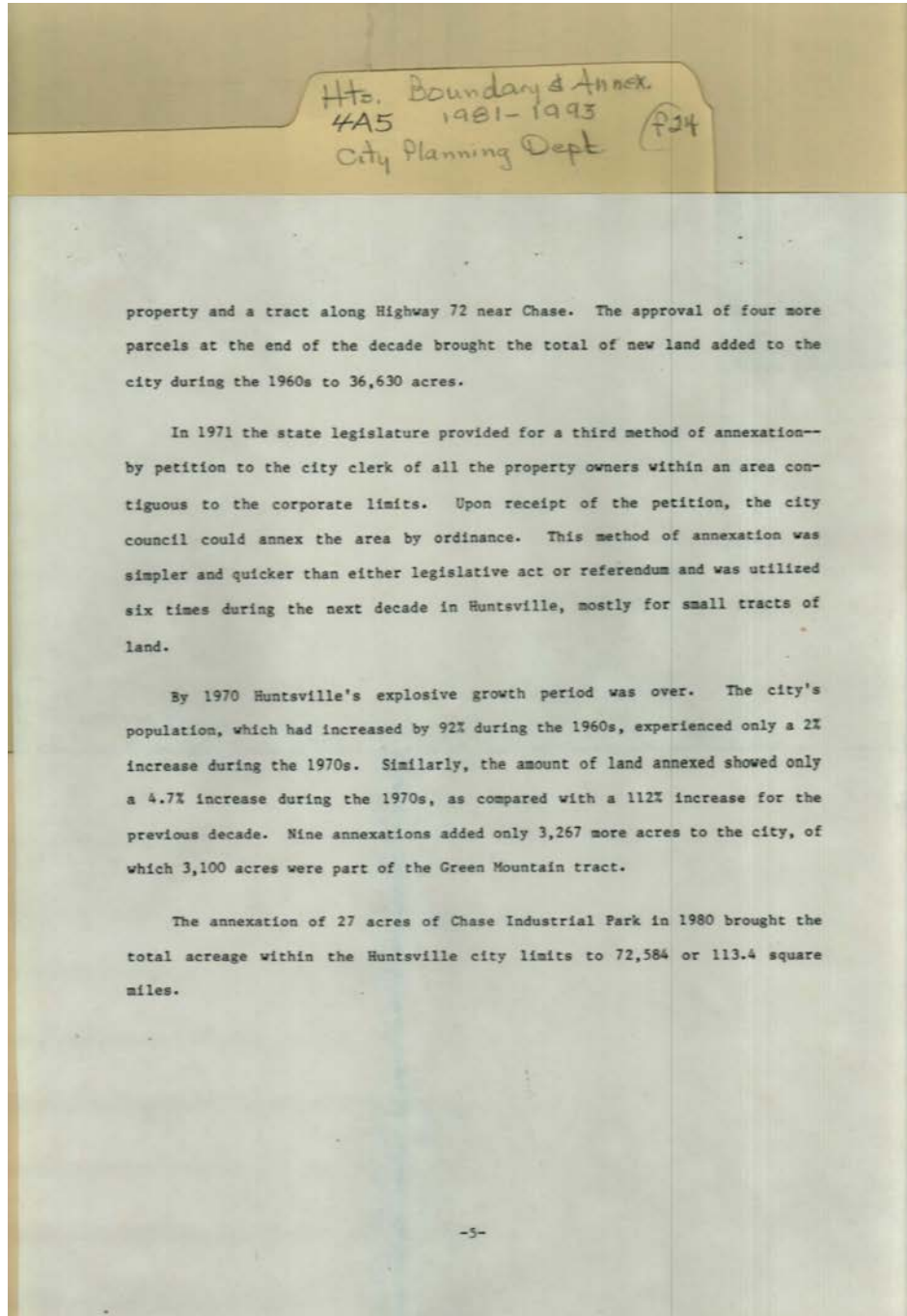
Huntsville, AL

Types:

essay

Dates:

1981-1983



Names:

Chase Industrial Park

Green Mountain

Places:

Huntsville, AL

Types:

essay

Dates:

1981-1983

Hts. Boundary & Annex
 #A5 1981-1993
 City Planning Dept (P24)

TABLE 1
 HUNTSVILLE'S POPULATION GROWTH

YEAR	AREA IN ACRES 1	PERCENTAGE CHANGE	POPULATION 2	PERCENTAGE CHANGE	PERSONS/ACRE
1860	640	-	3634	-	5.7
1870	2560	300	4907	35.0	1.9
1880	1440	-44.	4977	1.4	3.5
1890	1440	0	7995	60.6	5.5
1900	1440	0	8068	0.9	5.6
1910	1440	0	7611	-5.7	5.3
1920	1440	0	8018	5.3	5.6
1930	1548	7.5	11,554	44.1	7.5
1940	1548	0	13,050	12.9	8.4
1950	2728	76	16,437	26.0	6.0
1960	32,659	1097.0	72,365	340.3	2.2
1970	69,290	112	139,282	92.5	2.0
1980	72,557	4.7	142,513	2.3	2.0

1-City of Huntsville Planning Department
 2-U. S. Bureau of the Census

Names:

Huntsville's
 Population Growth

Places:

Huntsville, AL

Types:

chart

Dates:

1860-1980

Hts. Boundary & Annex.
 445 1981-1993 P34
 City Planning Dept

BOUNDARY AND ANNEXATION SURVEY
 HUNTSVILLE, ALABAMA
 1981

DESCRIPTION OF AREA	EFFECTIVE DATE	ANNEXATION PROCEDURE	AREA	
			SQ. MILES	ACRES
1. Town of Huntsville incorporated: Williams to Holmes and Lincoln to Gallatin	Dec. 9, 1811	Act of Miss. Territory		60
2. Limits $\frac{1}{4}$ mile from each side of the public square	Dec., 17, 1819	Alabama Act	.31	198
3. Limits $\frac{1}{2}$ mile from center of the public square; boundaries each one mile in length	Jan. 9, 1828	Alabama Act	1	640
4. Limits 1 mile from center of the public square; boundaries each two miles in length	Nov. 24, 1866	Alabama Act No. 16	4	2560
5. Annexed Glenwood Cemetery	Feb. 17, 1871	Alabama Act		10
6. Limits reduced; boundaries each $1\frac{1}{2}$ miles in length; Glenwood Cemetery reincluded	Feb. 25, 1876	Alabama Act No. 195	2.25	1440
7. Part of East Huntsville Addition	Sept. 22, 1925	Referendum No. 7318*	.17	107.89
8. Part of East Huntsville Addition	June 18, 1947	Referendum No. 10326	.10	65.4
9. Mayfair and Blossomwood Area	Oct. 31, 1947	Referendum No. 10414	1.74	1114.82
10. Hillendale Addition	Dec. 8, 1950	Referendum No. 11071	.38	243
11. Kingsbury Ave. Area	Dec. 8, 1950	Referendum No. 11072	.07	42
12. Redefined and extended the city limits; annexed Terry Heights School and Butler Terrace	June 6, 1951	Alabama Act No. 75	.31	200
AREA IN CITY AS OF DECEMBER 31, 1951			5.04	3223.11

* Probate Court Case Number

-7-

Names:

Boundary and Annexation Survey

Places:

Huntsville, AL

Types:

chart

Dates:

1981

Hts. Boundary & Annex.
 445 1981-1993
 City Planning Dept (P34)

DESCRIPTION OF AREA	EFFECTIVE DATE	ANNEXATION PROCEDURE	AREA	
			SQ. MILES	ACRES
13. Fagan Springs and Dallas Mill Area	Feb. 25, 1955	Referendum No. 12305	5.39	3449
14. Airport-South Huntsville	Aug. 30, 1955	Alabama Act No. 316	3.77	2410
Huntsville Times Area	Aug. 30, 1955	Alabama Act No. 316	.08	52
Russell Hill Area	Aug 30, 1955	Alabama Act No. 316	1.64	1050
15. Alters, extends and redefines the corporate limits of Huntsville: West Huntsville	April 14, 1956	Alabama Act No. 86	2.1	1347
Huntsville Park	April 14, 1956	Alabama Act No. 86	3.53	2260
Kildare-Colonial Hills	April, 14, 1956	Alabama Act No. 86	10.89	6970
Monte Sano	April 14, 1956	Alabama Act No. 86	3.69	2360
South Huntsville	April 14, 1956	Alabama Act No. 86	1.80	1150
AREA IN CITY AS OF JANUARY 1, 1957			37.92	24,271.11
16. Madison Pike School Area	Sept. 20, 1957	Alabama Act No. 664	.034	21.8
17. Whitesburg School Tract	Feb. 24, 1959	Alabama Act No. 62	.06	36.5
18. Meadow Hills Area south of Winchester Road	Sept. 30, 1959	Alabama Act No. 60 Referendum No. 13440	1.38	880
19. Jones Valley Farm Southeast	Sept. 30, 1959	Alabama Act No. 61 and Referendum No. 13441	2.65	1700
20. South Huntsville-Martin Road to Hobbs Island Road	Sept. 30, 1959	Alabama Act No. 63 and Referendum No. 13442	8.98	5750.
AREA IN CITY AS OF JANUARY 1, 1960			51.03	32,659.41

-8-

Names:

Boundary and Annexation Survey

Places:

Huntsville, AL

Types:

chart

Dates:

1981

Hts. Boundary & Annex
 4A5 1981-1993
 City Planning Dept (P24)

DESCRIPTION OF AREA	EFFECTIVE DATE	ANNEXATION PROCEDURE	AREA	
			SQ. MILES	ACRES
21. Research Park and Sherwood Park Area	Feb. 24, 1961	Referendum No. 13958	3.20	2050
22. Flemington Heights, Lily Flagg, Bel Air Area	Feb. 24, 1961	Alabama Act No. 130 and Referendum No. 13959	2.12	1360
23. Willowbrook Estates	Sept. 29, 1961	Alabama Act No. 130 and Referendum No. 14171	.68	434.6
24. Pulaski Pike, Winchester Road Area	Sept. 14, 1963	Alabama Act No. 494	3.19	2044
Area west of Rideout Road	Sept. 14, 1963	Alabama Act No. 494	5.54	3548
Pulaski Pike-Stringfield Road area	Sept. 14, 1963	Alabama Act No. 494	.505	323
Huntsville Mt. to Green Cove Road, Aldridge Creek Area	Sept. 14, 1963	Alabama Act No. 494	9.66	6108.
Byrd Spring Area-east of Byrd Spring Rod & Gun Club	Sept. 14, 1963	Alabama Act No. 494	.86	552
25. Pulaski Pike-Fairview Church Lane Area	July 3, 1964	Referendum No. 15133	3.031	1940
26. Meridianville Pike-Bob Wade Lane Area	Aug. 14, 1964	Referendum No. 15174	7.59	4860
27. Winchester Road north of A & M College	Aug. 14, 1964	Referendum No. 15185	.36	231
28. Pulaski Pike-Beaverdam Road Area	Sept. 4, 1964	Referendum No. 15218	1.125	720
Northwest Huntsville-Burwell Road Area	Sept. 4, 1964	Referendum No. 15218	3.0	1920
AREA IN CITY AS OF JANUARY 1, 1965			91.8	58,750.01

-9-

Names:

Boundary and Annexation Survey

Places:

Huntsville, AL

Types:

chart

Dates:

1981

Hts. Boundary & Annex.
 4A5 1981-1993 (F24)
 City Planning Dept

DESCRIPTION OF AREA	EFFECTIVE DATE	ANNEXATION PROCEDURE	AREA	
			SQ. MILES	ACRES
29. Chapman Mt. and Chase Area	Feb. 26, 1965	Referendum No. 15478	2.13	1361.77
30. Area east of Lodge Road and north of Grizzard Road	July 7, 1965	Alabama Act No. 102	.044	28.6
31. Edmonton Heights Area	July 16, 1965	Referendum No. 15670	.2	99.9
32. New Airport	Aug. 11, 1965	Alabama Act No. 253	12.21	7814.4
33. Winchester Road Area	June 13, 1966	Referendum No. 16107	.08	56.52
34. Rideout Village Area	Oct. 31, 1966	Referendum No. 16335	.5	321.5
35. Rutledge Heights Area	Sept. 8, 1967	Alabama Act No. 555	.024	15.35
36. A & M College Tract	Oct. 9, 1968	Referendum No. 17328	1.32	842
AREA IN CITY AS OF JANUARY 1, 1970			108.27	69,290.05

-10-

Names:

Boundary and Annexation Survey

Places:

Huntsville, AL

Types:

chart

Dates:

1981

Hts. Boundary & Annex
 #A5 1981-1993
 City Planning Dept. (P24)

DESCRIPTION OF AREA	EFFECTIVE DATE	ANNEXATION PROCEDURE	AREA	
			SQ. MILES	ACRES
37. Ridgecrest-Huntsville Mill Area	Oct. 1, 1971	Alabama Act No. 2204	.026	17.03
38. Monte Sano-Huntsville Mt. Erle Pettus Jr. Annex	Jan 13, 1972	City Ordinance 72-11	.132	84.49
39. Rutledge Heights-Oakwood College Area	May 11, 1972	City Ordinance 72-103	.04	26.0
40. Pfister Tax Island	Aug. 27, 1973	Alabama Act No. 603		5.06
41. Green Mountain	Aug. 30, 1973	Alabama Act No. 653	4.84	3100
42. Lodge Road-One Lot	Sept. 26, 1974	City Ordinance 74-257		.92
43. Mallory Tax Island	Aug. 19, 1976	City Ordinance 76-325		7.68
44. Chase Industrial Area	May 25, 1978	City Ordinance 78-174		16.48
45. South Huntsville-Coledale Industrial Park	Dec. 14, 1978	City Ordinance 78-441		9.2
AREA IN CITY AS OF JANUARY 1, 1980			113.37	72,556.91
46. Chase Industrial Park	Aug. 28, 1980	City Ordinance 80-257		27.37
AREA IN CITY AS OF JANUARY 1, 1981			113.41	72,584.28

-11-

Names:

Boundary and Annexation Survey

Places:

Huntsville, AL

Types:

chart

Dates:

1981

Hts. Boundary & Annex.
4A5 1981-1993 P24
City Planning Dept

CITY OF HUNTSVILLE
ANNEXATION INFORMATION

DATE	SQUARE MILES	ACRES
Total Area in City 12-31-51	5.0	3,223
Annexed in 1955	10.9	6,961
Annexed in 1956	22.0	14,087
Annexed in 1957		22
Annexed in 1958		0
Annexed in 1959	13.0	8,366
Total Annexed 1955-59	46.0	29,436
Total Area in City 1-1-60	51.0	32,659
Annexed in 1960		0
Annexed in 1961	6.0	3,844
Annexed in 1962		0
Annexed in 1963	19.6	12,575
Annexed in 1964	15.1	9,671
Annexed in 1965	14.5	9,305
Annexed in 1966		378
Annexed in 1967		15
Annexed in 1968		842
Annexed in 1969		0
Total Annexed 1960-69	57.2	36,630
Total Area in City 1-1-70	108.3	69,289
Annexed in 1970		0
Annexed in 1971		17
Annexed in 1972		110
Annexed in 1973	4.8	3,105
Annexed in 1974		1
Annexed in 1975		0
Annexed in 1976		8
Annexed in 1977		0
Annexed in 1978		26
Annexed in 1979		0
Total Annexed 1970-79	5.1	3,267
Total Area in City 1-1-80	113.4	72,556

Names:
 Huntsville, City of
 Annexation Information

Places:
 Huntsville, AL

Types:
 chart

Dates:
 1981

Hts. Boundary & Annex.
 4A5 1981-1993 (F24)
 City Planning Dept.

DATE	SQUARE MILES	ACRES
Annexed in 1980		27
Annexed in 1981		42
Annexed in 1982		12
Annexed in 1983		10
Annexed in 1984		705
Annexed in 1985		1,017
Annexed in 1986*	24.9	15,941
Annexed in 1987		5,769
Annexed in 1988	10.4	6,632
Annexed in 1989		460
Total Annexed 1980-89	47.8	30,615
Total Area in City 1-1-90	161.2	103,171
Annexed in 1990	1.6	1,025
Annexed in 1991	2.9	1,875
Annexed in 1992	3.2	2,071
Total Area in City 1-1-93	168.9	108,142

* Annexed land in Limestone County equals 18.8 square miles or 12,051 acres. Annexed land in Madison County equals 6.1 square miles or 3,890 acres.

Names:

Huntsville, City of Information
 Annexation

Places:

Huntsville, AL

Types:

chart

Dates:

1981

Frances Cabaniss Roberts Collection: Series 4, Subseries A, Box 5, Folder 24
Huntsville Boundary and Annex, City Planning Department, 1981 - 1993 - Utilities and Services

[Contents](#) [Index](#) [About](#)

Table of Contents

[Image 1](#) (r04a05-24-000-0091)

[Image 2](#) (r04a05-24-000-0092)

[Image 3](#) (r04a05-24-000-0093)

[Image 4](#) (r04a05-24-000-0094)

[Image 5](#) (r04a05-24-000-0095)

[Image 6](#) (r04a05-24-000-0096)

[Image 7](#) (r04a05-24-000-0097)

[Image 8](#) (r04a05-24-000-0098)

[Image 9](#) (r04a05-24-000-0099)

[Image 10](#) (r04a05-24-000-0100)

[Image 11](#) (r04a05-24-000-0101)

[Image 12](#) (r04a05-24-000-0102)

[Image 13](#) (r04a05-24-000-0103)

[Image 14](#) (r04a05-24-000-0104)

[Image 15](#) (r04a05-24-000-0105)

[Image 16](#) (r04a05-24-000-0106)

[Image 17](#) (r04a05-24-000-0107)

[Table of Contents](#)

[Name & Place Index](#)

[About the Collection](#)

Frances Cabaniss Roberts Collection: Series 4, Subseries A, Box 5, Folder 24
Huntsville Boundary and Annex, City Planning Department, 1981 - 1993 - Utilities and Services

[Contents](#) [Index](#) [About](#)

Name & Place Index

Bayer, Linda [1](#)
Blossomwood [7](#)
Boundary and Annexation Survey [1](#), [5](#), [6](#), [11](#), [12](#), [13](#), [14](#),
[15](#)
Chase Industrial Park [9](#)
City of Huntsville Planning Department [1](#)
East Huntsville Addition [7](#)
Glenwood Cemetery [7](#)
Green Mountain [9](#)
HIC Building / Dallas Mill [8](#)
Hunt, John [5](#)
Huntsville Manufacturing Co. [8](#)
Huntsville's Population Growth [10](#)
Huntsville, AL [1](#), [5](#), [6](#), [7](#), [8](#), [9](#), [10](#), [11](#), [12](#), [13](#), [14](#), [15](#), [16](#),
[17](#)
Huntsville, City of Annexation Information [16](#), [17](#)
Huntsville, City of Annexations 1876-1956 [4](#)
Huntsville, City of Boundaries [3](#)
Huntsville, City of [2](#)
Huntsville, Madison Co., AL [2](#), [3](#), [4](#)
John Blue Company [8](#)
Jones Valley [8](#)
Mallory Capacitor [8](#)
Martin Industries [8](#)
Mayfair [7](#)
Paetz, Juergen [1](#)
Research Park [8](#)
Sherwood Park [7](#)
Whitesburg School tract [7](#)

Frances Cabaniss Roberts Collection

Preferred Citation: Frances Cabaniss Roberts Collection, Archives and Special Collections, M. Louis Salmon Library, University of Alabama in Huntsville, Huntsville, AL.

Collection Scope and Content: The Collection of 114 Linear ft. includes a total of 156 Archival Boxes. The Frances Cabaniss Roberts collection covers the historical records of the Cabaniss Roberts family. This collection contains extensive correspondence records of the Cabaniss Roberts family circa 1830 to 1930.

Archives/Special Collections Access Restrictions: None

Conditions Governing Use: This material may be protected under U. S. Copyright Law (Title 17, U.S. Code) which governs the making of photocopies or reproductions of copyrighted materials. You may use the digitized material for private study, scholarship, or research. Though the University of Alabama in Huntsville Archives and Special Collections has physical ownership of the material in its collections, in some cases we may not own the copyright to the material. It is the patron's obligation to determine and satisfy copyright restrictions when publishing or otherwise distributing materials found in our collections.

Provenance: Gift of Johanna Shields on October 28, 2006.



THE UNIVERSITY OF
ALABAMA IN HUNTSVILLE

**The UAH Archives and Special Collections
M. Louis Salmon Library**