

**Section 6**

**Names:**

Adcock, Jessie  
 Adcock, William M.  
 Malone, Marshall  
 Manley, Lessie T.

Moss, Jim  
 Owens, Birdie Smith  
 Owens, William  
 Clyde

Rozell children  
 Rozell, Mollie  
 Prudence Short

Rozell, William  
 Thomas  
 Short, Richard &  
 Mattie Stewart

**Places:**

Maple Hill Cem.,  
 Huntsville, AL

**Types:**

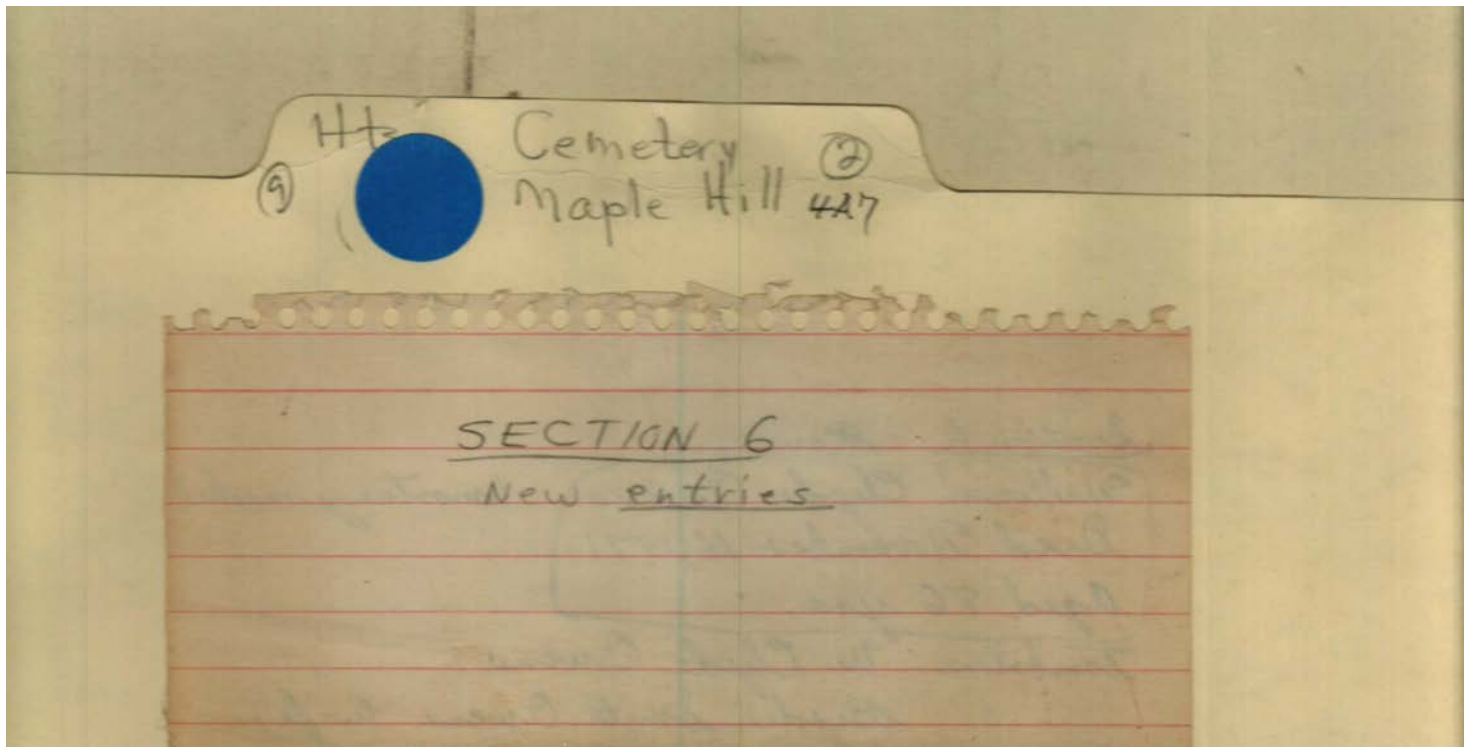
list

notes

Frances Cabaniss Roberts Collection: Series 4, Subseries A, Box 7, Folder 2

Cemetery Notes, Correspondence, Maps, and Drawings, undated

Image 2 r04a07-02-000-0002 [Contents](#) [Index](#) [About](#)



Section 6

**Names:**

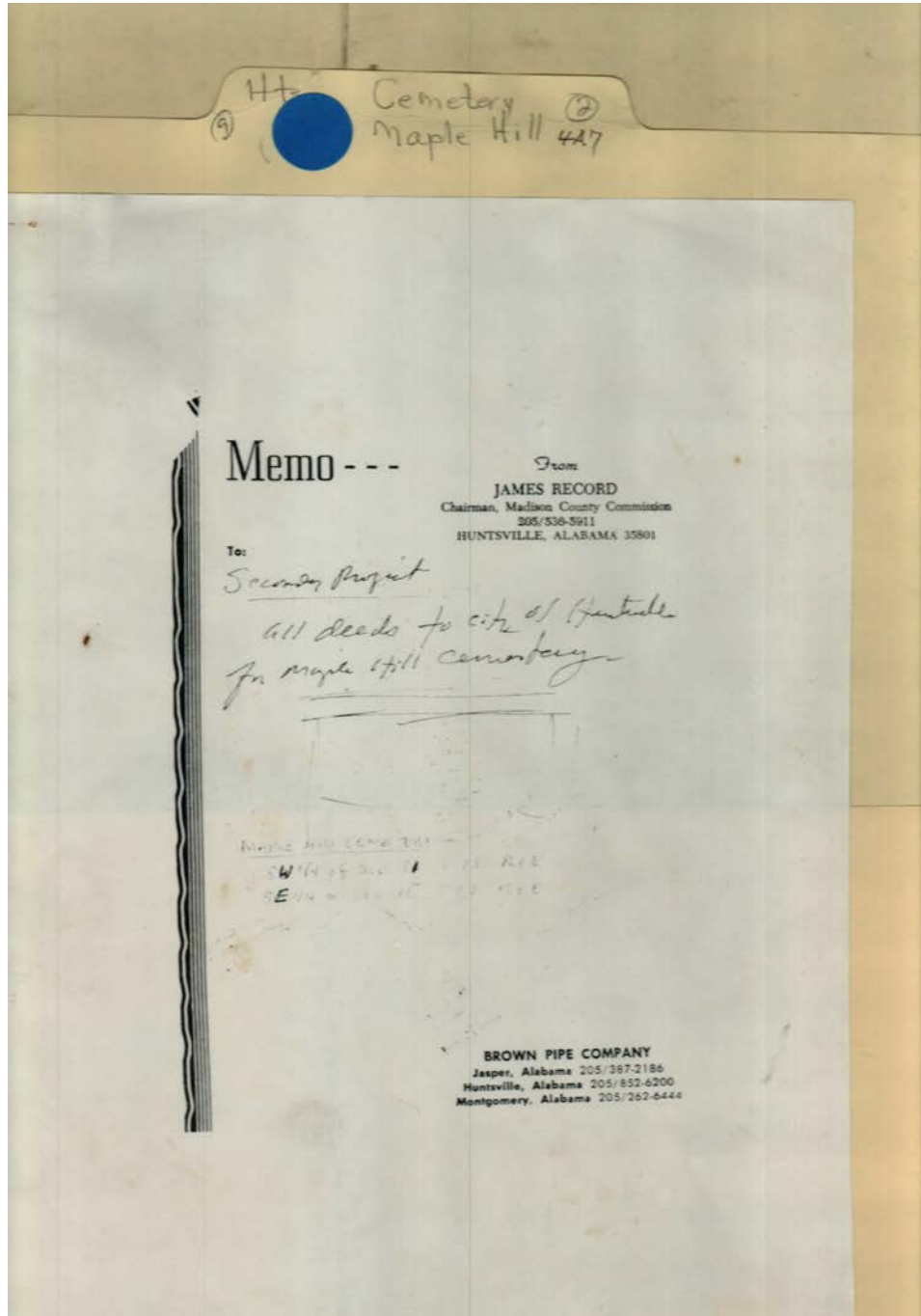
Section 6 new entries

**Places:**

Maple Hill Cem.,  
Huntsville, AL

**Types:**

memo



**Names:**

All deeds to city of  
Huntsville for

Maple Hill  
Cemetery

Record, James

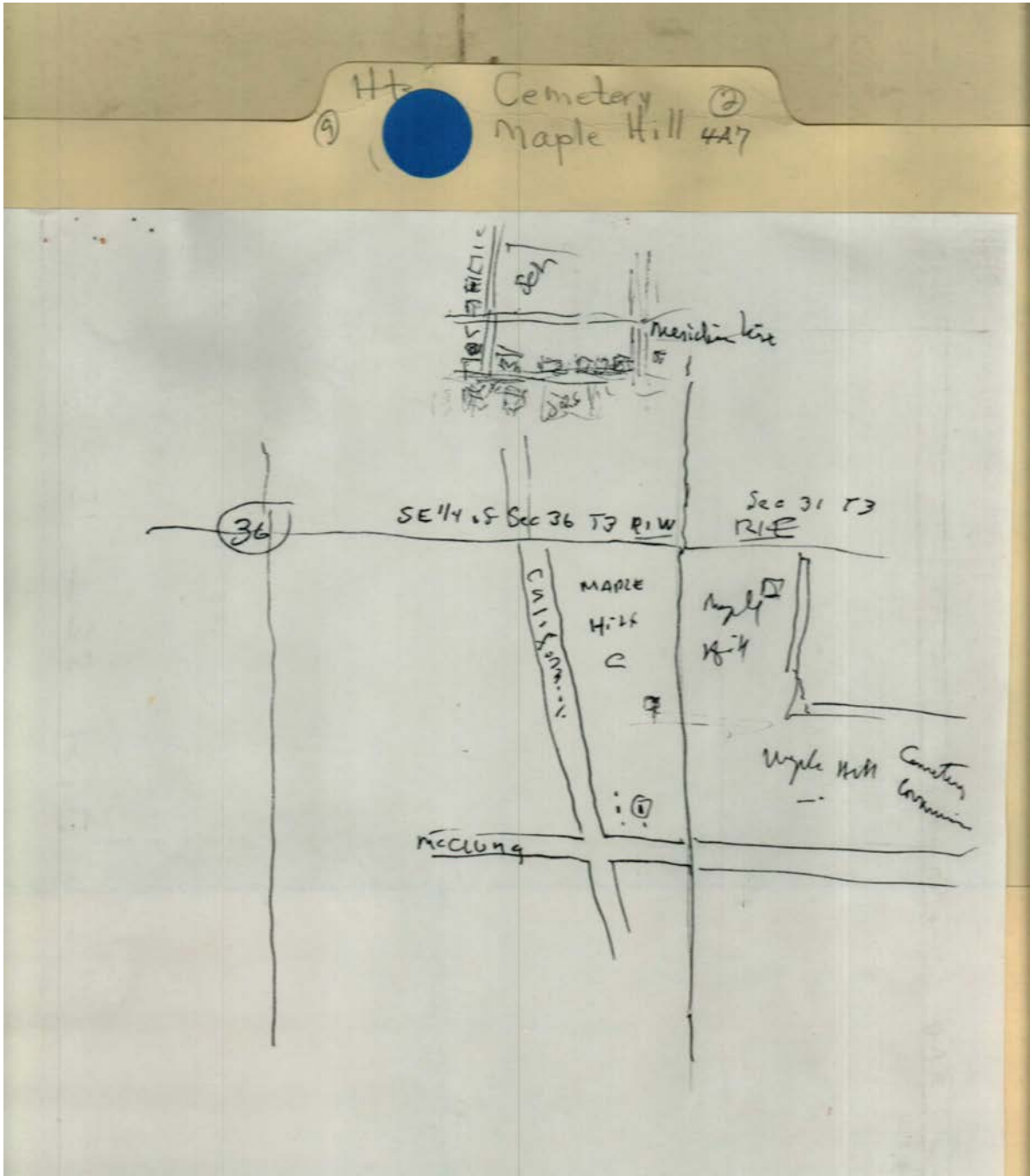
**Places:**

Huntsville, AL

Maple Hill Cem.,  
Huntsville, AL

**Types:**

memo



**Names:**

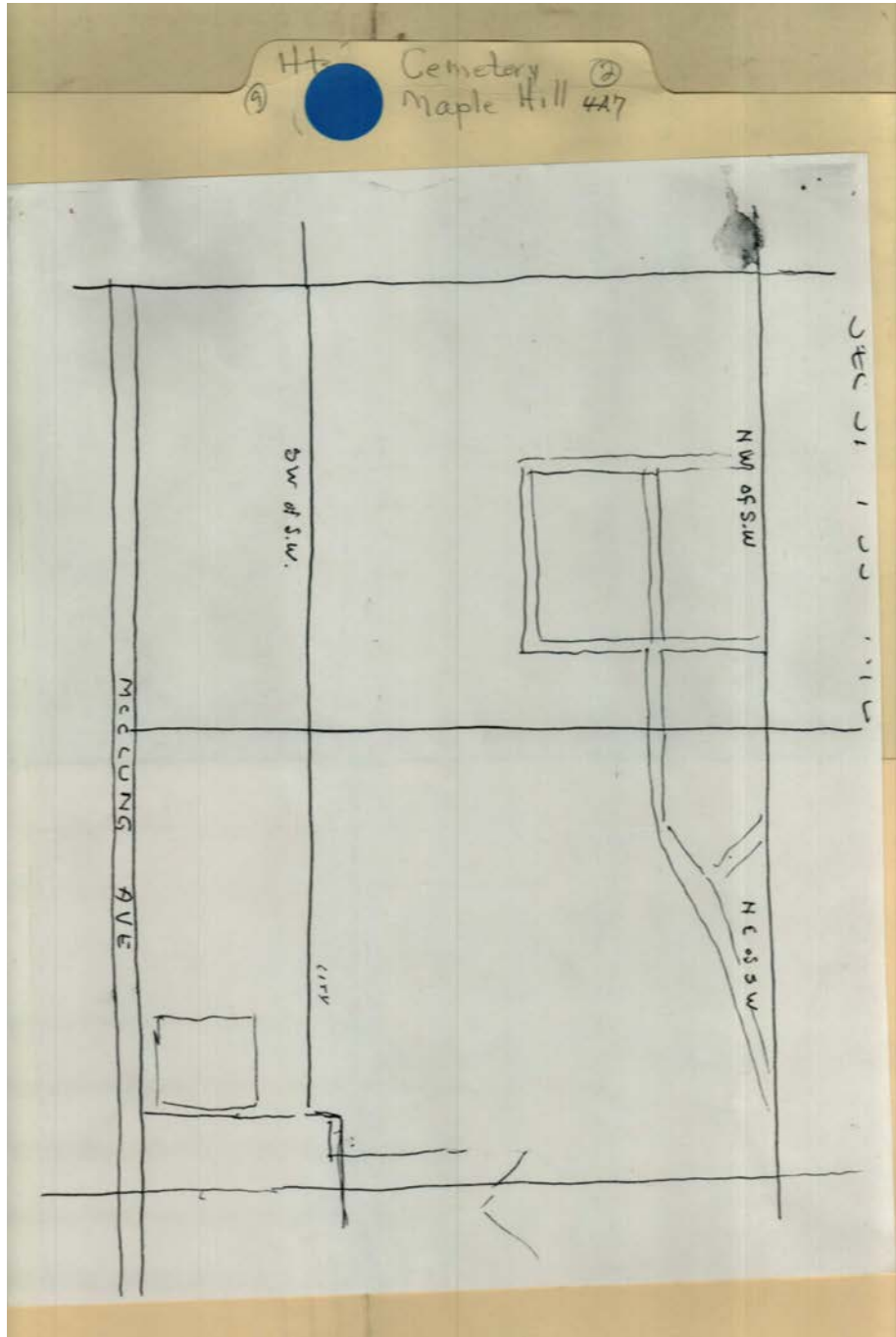
Maple Hill Cemetery

**Places:**

Huntsville, AL

**Types:**

drawing



**Names:**

Section along  
McClung Ave.

**Places:**

Maple Hill Cem.,  
Huntsville, AL

**Types:**

drawing



Frances Cabaniss Roberts Collection: Series 4, Subseries A, Box 7, Folder 2  
 Cemetery Notes, Correspondence, Maps, and Drawings, undated  
 Image 6 r04a07-02-000-0006 [Contents](#) [Index](#) [About](#)

Ht Cemetery  
Maple Hill 4A7

NE 1/4 Sec 36 T3 R1W				NW 1/4 of Sec 31 T3 R1E			
Book	Page	Parties	Date	Book	Page	Parties	Date
L	450	Hunter to Conner	1828	EE	1	Cox to Denton	181
Q	415	Conner to Cavett	1837	N	463	Pope to U.S. Mt	183
V	621	Cavett to Forward	1846	P	1	Pope to Pope	183
FF	596	Walker to Cabaniss Mt	1867	P	23	Pope to U.S. Mt	183
ZC	285	Walker to Mann	1875	S	412	Pope to Pope	180
4	47	Walker to Smith Mt	1878	X	521	Pope to Robinson	180
FFF	84	Walker to Mann	1881	X	521	Walker to McCally	185
KKK	62	Mann to Gentry	1885	Y	266	McCally to Robinson	185
18	108	Gilliam to FITE Mt	1885	AA	464	Wife to McCally	185
25	457	Gilliam to Watkins	1887	BB	274	Walker to Steele	185
UU	269	Gentry to Phillips	1891	CC	128	Breck to Dallen	185
UU	233	Dalle to Moore	1891	GG	207	Steele to City	186
75	564	Phillips to Voorhes	1895	KK	231	Sumner to Calhoun	186
75	568	Voorhes to Voorhes	1895	RR	409	Breck to Dentler	187
53	395	Voorhes to Mansley Mt	1895	3BB	591	Breck to Hanson Mt	187
76	332	Maupin to Voorhes	1895	BBB	357	Breck to Dentler	187
78	323	Walker to Winney	1896	CCC	434	Breck to Dentler	1878
77	484	Peters to Freed	1896	FFF	588	Bernstein to City	1881
53 1/2	309	Freed to B & A Mt	"	GGG	492	Baker to Miller	1882
59	7	Voorhes to records	1897	NNN	506	Baker to Schmitt	1887
80	445	Maupin to Voorhes	1897	NNN	401	Bernstein to Simlar	1887
83	185	Voorhes to William	1898	QQQ	156	Baker to Dentler	1888
83	270	Winney to Dentler	1898	OOO	605	Baker to Schmitt	1888
84	287	William to Long	1899	28	463	Schmitt to Dallen	1888

**Names:**

Deeds to city of  
Huntsville for

Maple Hill  
Cemetery

**Places:**

Huntsville, AL

**Types:**

list

Frances Cabaniss Roberts Collection: Series 4, Subseries A, Box 7, Folder 2  
 Cemetery Notes, Correspondence, Maps, and Drawings, undated  
 Image 7 r04a07-02-000-0007 [Contents](#) [Index](#) [About](#)

(9) H+ Cemetery (2)  
 Maple Hill 4A7

NE 1/4 SE 1/4 SE 1/4 Sec 36 T3 R1W				NW 1/4 SW 1/4 Sec 31 T3 R1E			
Book	Page	Parties	Date	Book	Page	Parties	Date
85	63-	Long to Gossy	1895	www	134	Denton to Stevens	1892
86	2	O. A. to Fisk mt.	1899	xxx	554	White to White	1892
85	632	Gossy to Hill	1899	yyy	518	White to White	1893
85	596	Fisk to Solberg	1899	45	193	Schmidt to M. in mt.	1893
65	375	Hill to Sprague mt.	1900	YXX	561	Murphy to Moore	1893
87	291	Kilmer to Hampton	1901	74	300	White to Van Valkenburg	1894
87	477	Hampton to Kelly	1902	75	114	White to Shepard	1894
74	622	Solberg to Schiffman	1902	47	298	White to Shepard mt.	1894
90	157	Mayhew to Carter	1902	76	209	Van Valk. to Weller	1895
22	371	Conrad to Hill mt.	1903	86	353	Schmidt to Asmace	1900
60	582	Fisk to Sprague mt.	1903	86	355	Jennar to Elgin	1900
81	192	Fisk to N.V. oil lease	1903	86	407	Elgin to Stevens	1900
96	41	Hill to Conrad	1905	87	325	Hornbaker to Pearson	1901
93	445	Kelly to F.H.B.	1907	87	328	Simler to Hornbaker	1901
114	289	Stang to Paul mt.	1912	87	277	Simler to Hornbaker	1901
104	288	Conrad to Carter	1913	89	251	Whatterson to White	1901
122	16	Carter to W.H.H.	1919	89	74	Moore to Clay	1901
161	243	W.H.H. to S.H. mt.	1919	87	497	Baker to Simler	1902
				90	399	Hornbaker to Wode	1902
				79	451	Sprague to N.V. (lease)	1903
				82	153	Reid to Mocalley	1905
				98	65	Clay to Clay	1907
				97	486	Sheppard to Clay	1907

**Names:**

Deeds to city of  
 Huntsville for

Maple Hill  
 Cemetery

**Places:**

Huntsville, AL

**Types:**

list

(9) Ht Cemetery Maple Hill 427 (2)

NW 1/4 SW 1/4 SE 1/4  
SW 1/4 Sec 31 T7 R1E

Book Page	Part	Date
94 455	Boyd to Shamp	1907
93 507	Shamp to Post Mt	1907
<u>96 142</u>	Shamp to Wells Mt	1908
99 196	Rumage to Rumage	1911
104 520	Ream to Dean	1911
131 274	Starns to Sprague Mt	1914
125 53	Hall to Devir	1920
125 55	Townsend to Collins	1920
125 55	Towns to Collins	1920
79 451	Sprague to N.Y. 0-1 (town)	1903

**Names:**

Deeds to city of  
Huntsville for

Maple Hill  
Cemetery

**Places:**

Huntsville, AL

**Types:**

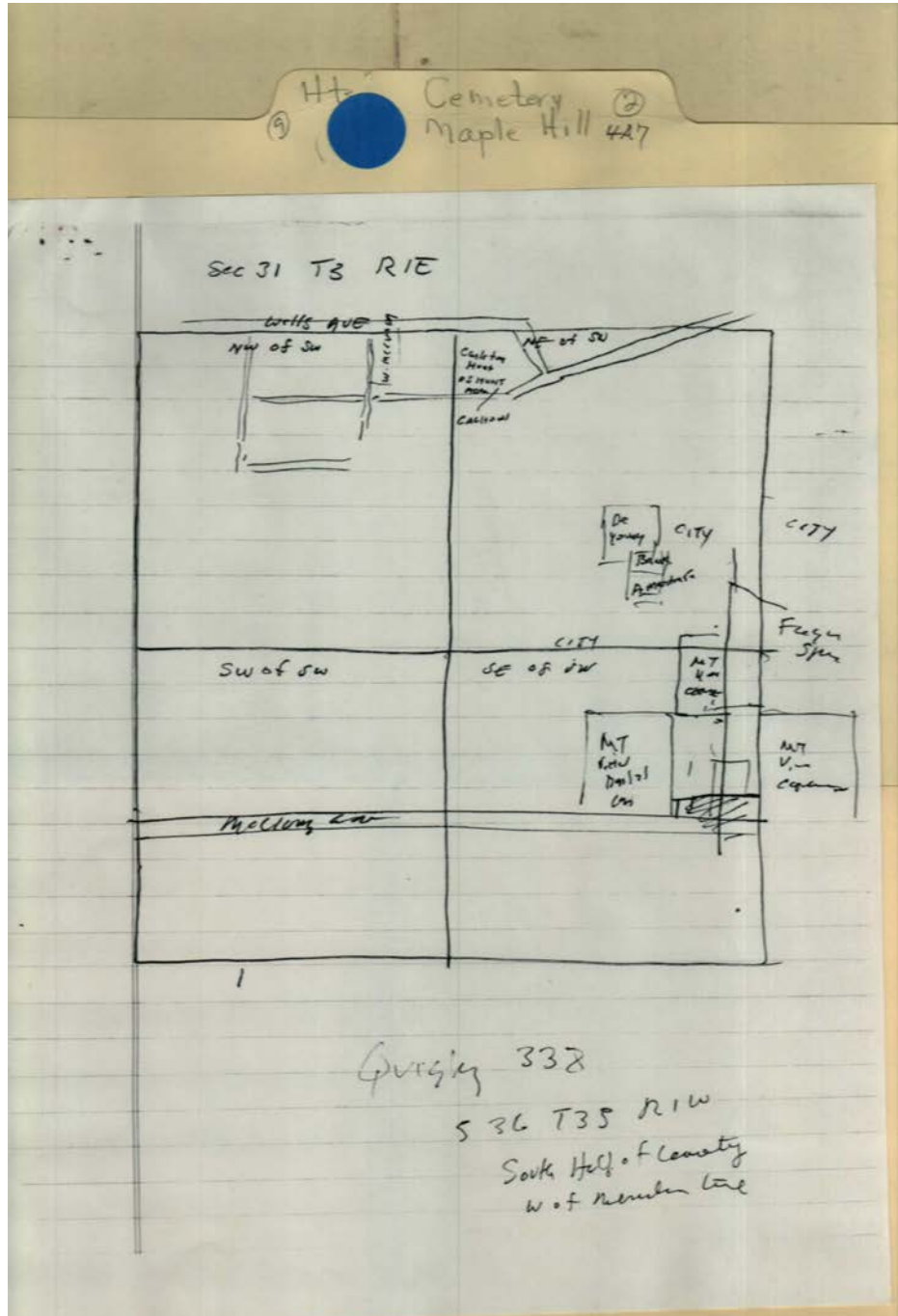
list



Frances Cabaniss Roberts Collection: Series 4, Subseries A, Box 7, Folder 2

Cemetery Notes, Correspondence, Maps, and Drawings, undated

Image 9 r04a07-02-000-0009 [Contents](#) [Index](#) [About](#)



**Names:**

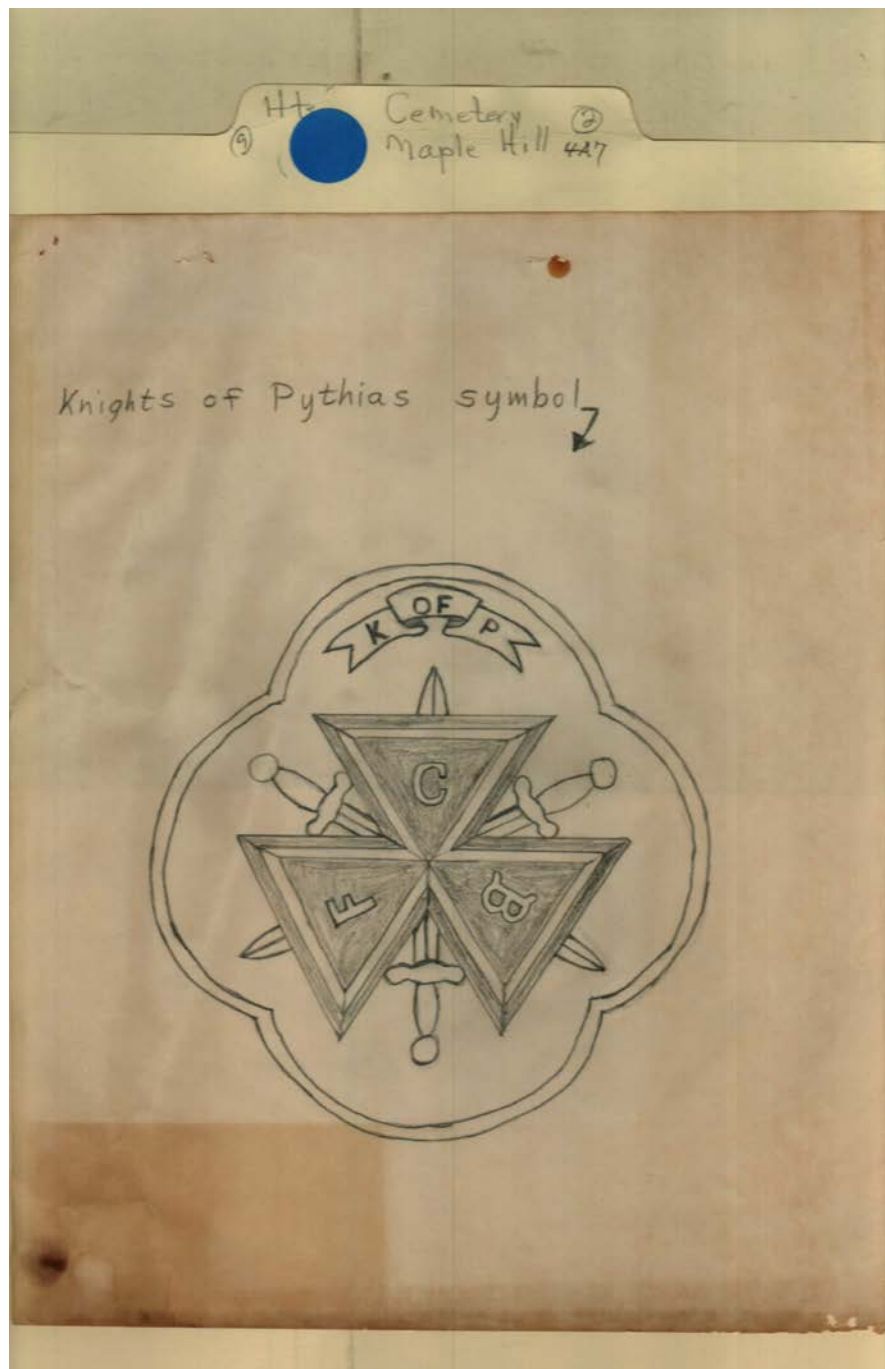
South half of Maple Hill Cemetery

**Places:**

Huntsville, AL

**Types:**

drawing



**Names:**

Knights of Pythias  
symbol

**Places:**

Maple Hill Cem.,  
Huntsville, AL

**Types:**

drawing

**Frances Cabaniss Roberts Collection: Series 4, Subseries A, Box 7, Folder 2**

**Cemetery Notes, Correspondence, Maps, and Drawings, undated**

Image 11 r04a07-02-000-0019 [Contents](#) [Index](#) [About](#)

**Access to this image is restricted.** The original of this material is available in the Special Collections Reading Room located on the Ground Floor of the Salmon Library at the University of Alabama in Huntsville. Contact the archives staff via email at [archives@uah.edu](mailto:archives@uah.edu) or by phone at 256-824-6523 for further information.

See image 10

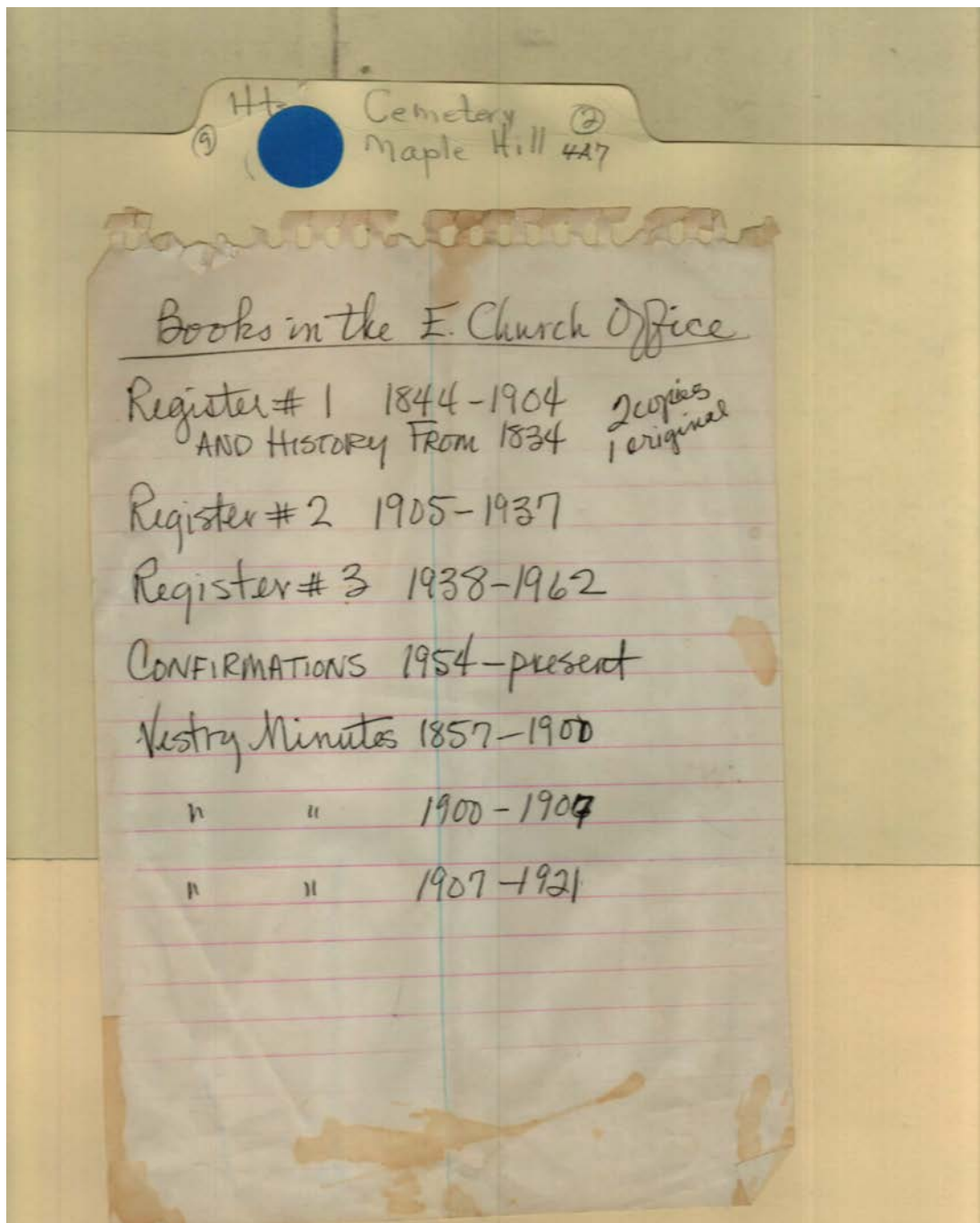
**Names:**

Knights of Pythias  
symbol

Thurston, Edgar M.

**Places:**

Maple Hill Cem.,  
Huntsville, AL



Episcopal Church book

**Names:**

Books in the  
 Episcopal Church  
 Office

Confirmations  
 Register #1 and  
 History

Register #2  
 Register #3  
 Vestry Minutes

**Places:**

Huntsville, AL

**Types:**

book

list

**Dates:**

1834-1904  
 1857-1900

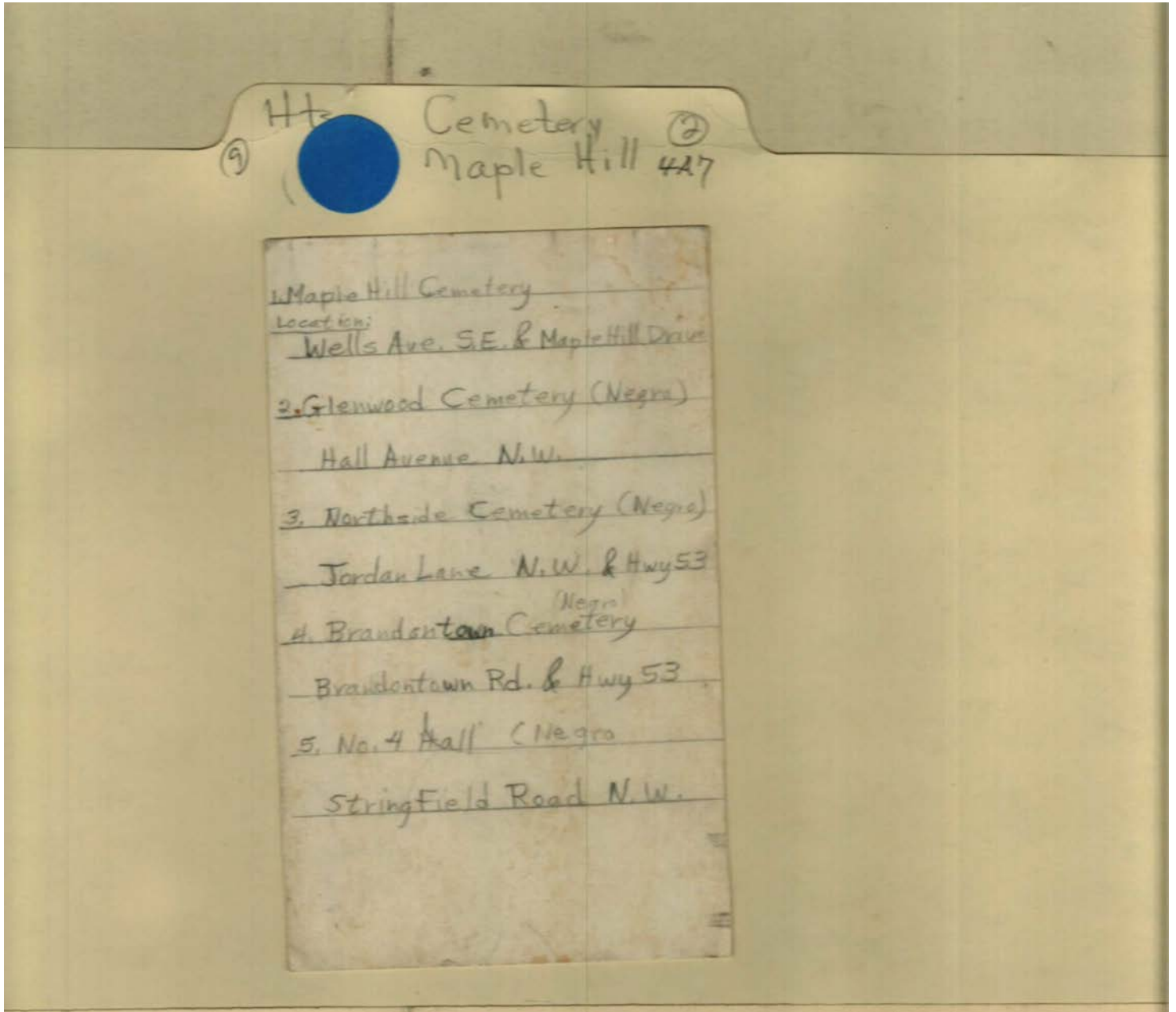
1900-1907  
 1905-1937

1907-1921  
 1938-1962

1954-present







**Names:**

Brandontown  
Cemetery (Negro)  
Glenwood Cemetery  
(Negro)

Huntsville cemetery  
locations  
Maple Hill Cemetery

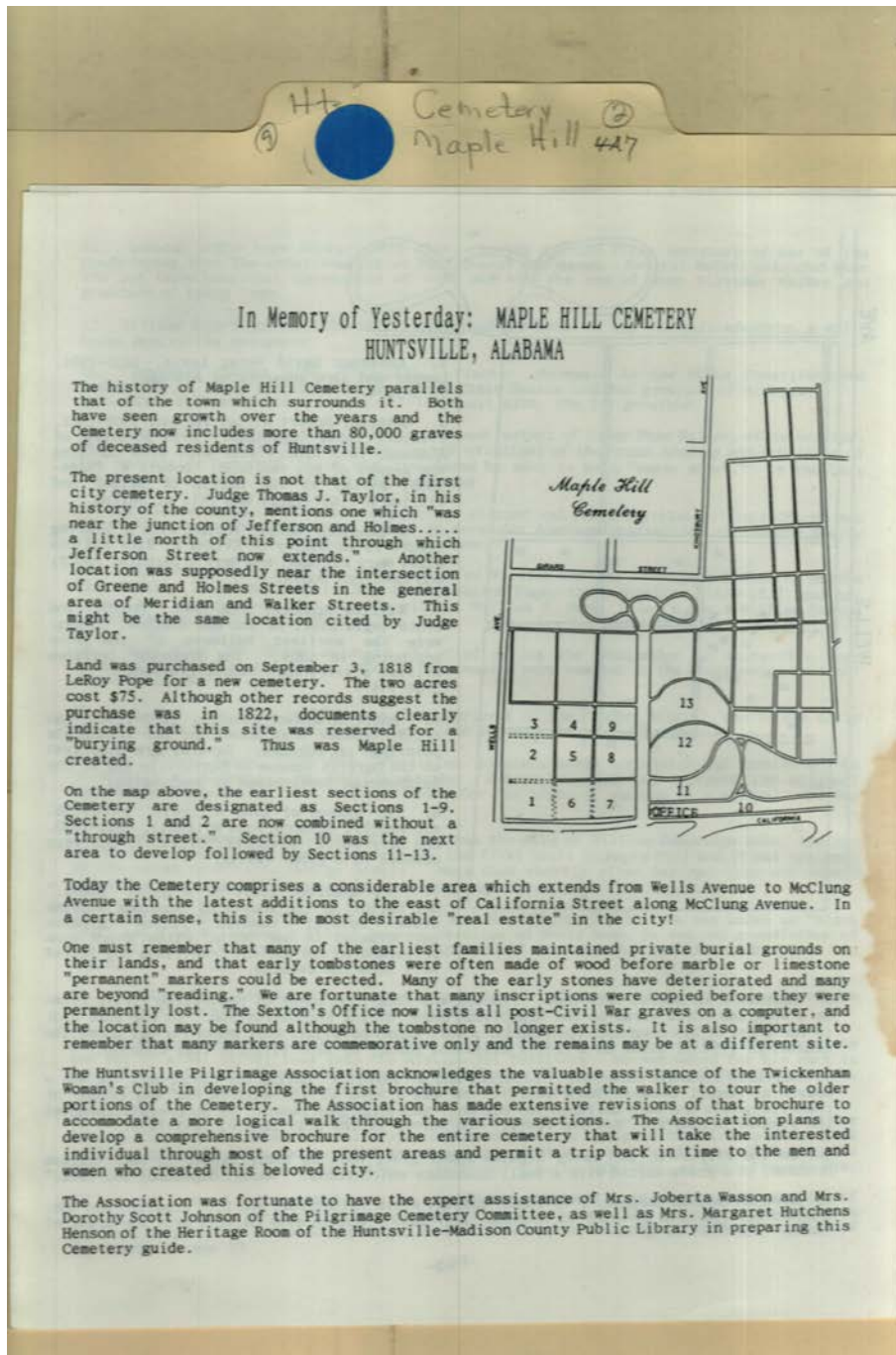
No, 4 Hall Cemetery  
(Negro)  
Northside Cemetery  
(Negro)

**Places:**

Huntsville, AL

**Types:**

list



**Names:**

Henson, Margaret  
Hutchens  
Huntsville Pilgrimage  
Association

Johnson, Dorothy  
Scott  
Pope, LeRoy

Taylor, Thomas J.,  
Judge  
Twickenham  
Woman's Club

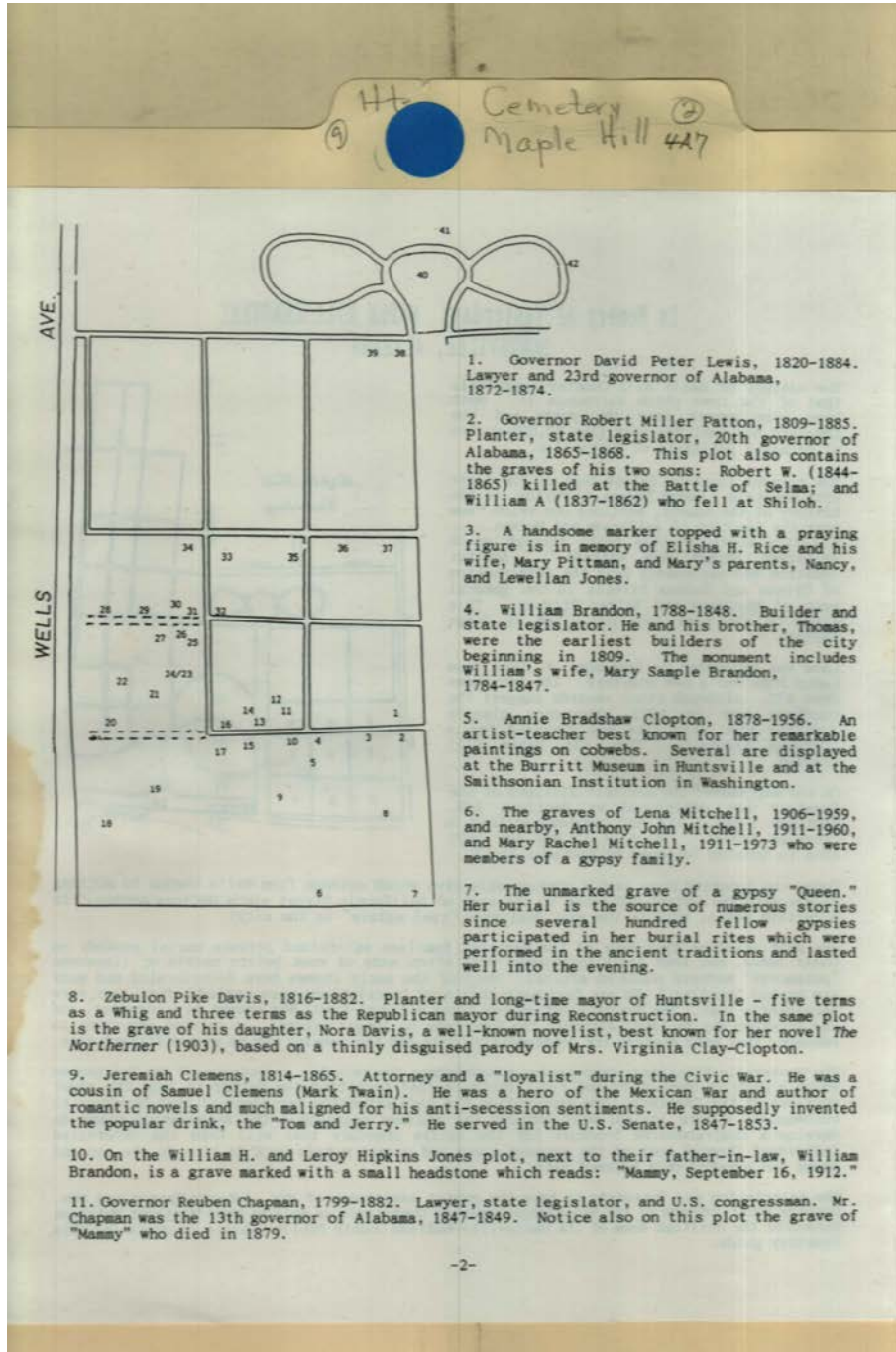
Wasson, Joberta  
In Memory of  
Yesterday: Maple  
Hill Cemetery ?

**Places:**

Huntsville, AL

**Types:**

brochure



**Names:**

Brandon, Mary  
 Sample  
 Brandon, Thomas  
 Brandon, William  
 Chapman, Reuben,  
 Gov.  
 Clay-Clopton,  
 Virginia  
 Clemens, Jeremiah

Clemens, Samuel  
 (Mark Twain)  
 Clopton, Annie  
 Bradshaw  
 Davis, Nora  
 Davis, Zebulon Pike  
 Jones, Leroy Hipkins  
 Jones, Lewellan  
 Jones, Nancy

Jones, William H.  
 Lewis, David Peter,  
 Gov.  
 Mitchell, Anthony  
 John  
 Mitchell, Lena  
 Mitchell, Mary  
 Rachel

Patton, Robert Miller,  
 Gov.  
 Patton, Robert W.  
 Patton, William A.  
 Rice, Elisha H.  
 Rice, Mary Pittman  
 Mammy d. 1912  
 Mammy died 1879

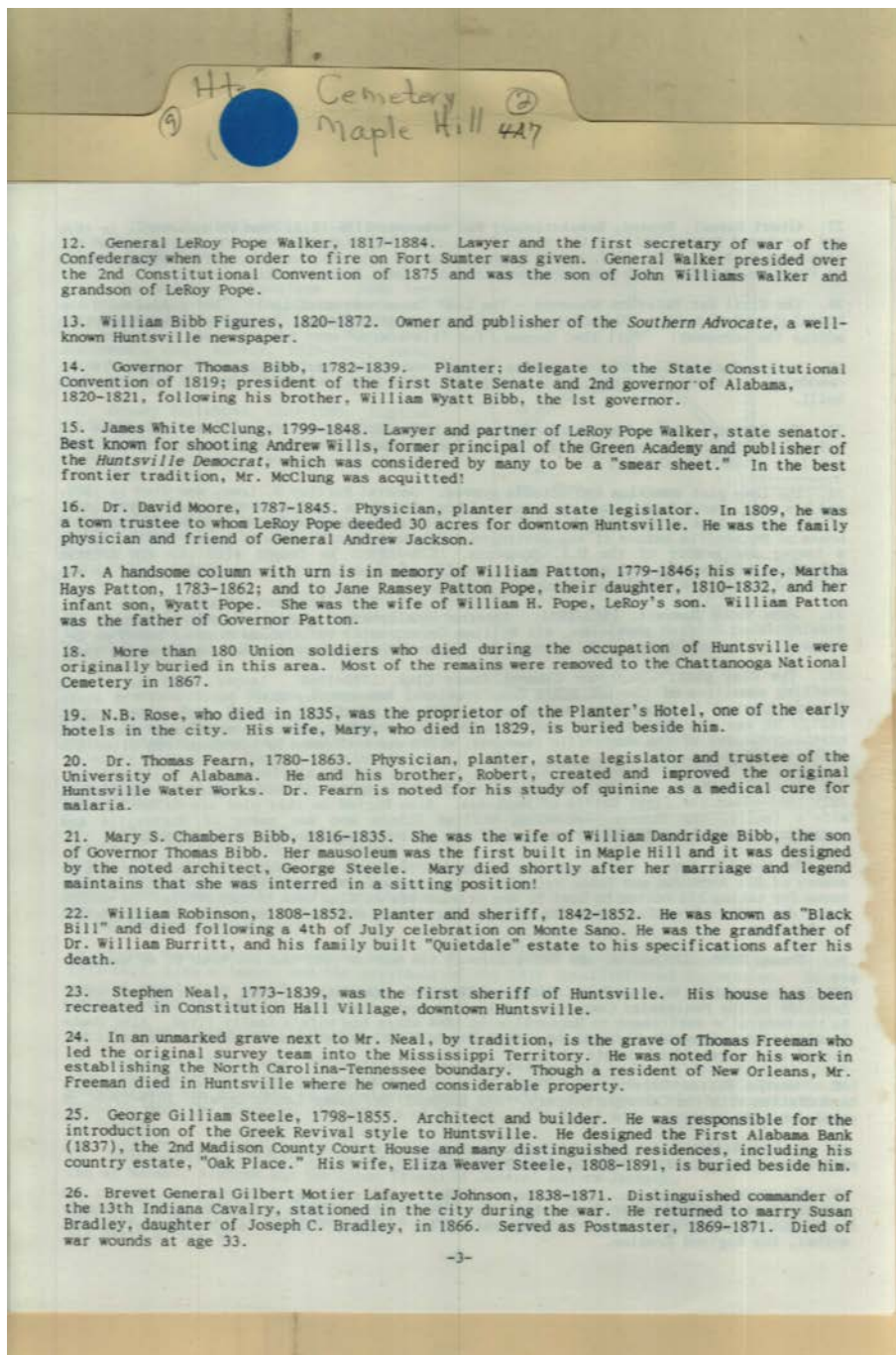
**Places:**

Huntsville, AL

**Types:**  
brochure



Frances Cabaniss Roberts Collection: Series 4, Subseries A, Box 7, Folder 2  
 Cemetery Notes, Correspondence, Maps, and Drawings, undated  
 Image 16 r04a07-02-000-0015 [Contents](#) [Index](#) [About](#)



**Names:**

- |                              |                          |                             |                           |
|------------------------------|--------------------------|-----------------------------|---------------------------|
| Bibb, Mary S.<br>Chambers    | Dox, Peter, Judge        | Brevet Gen.                 | Pope, Wyatt               |
| Bibb, Thomas, Gov.           | Fearn, Robert            | McClung, James              | Robinson, William         |
| Bibb, William<br>Dandridge   | Fearn, Thomas, Dr.       | White                       | Rose, Mary                |
| Bibb, William Wyatt,<br>Gov. | Figures, William<br>Bibb | Moore, David, Dr.           | Rose, N. B.               |
| Bradley, Joseph C.           | Freeman, Thomas          | Neal, Stephen               | Steele, Eliza Weaver      |
| Bradley, Susan               | Jackson, Andrew,<br>Gen. | Patton, Martha Hays         | Steele, George<br>Gilliam |
| Burritt, William, Dr.        | Johnson, Gilbert         | Pope, Jane Ramsey<br>Patton | Union soldiers            |
|                              | Motier Lafayette,        | Pope, William H.            | Walker, LeRoy Pope        |
|                              |                          |                             | Wills, Andrew             |

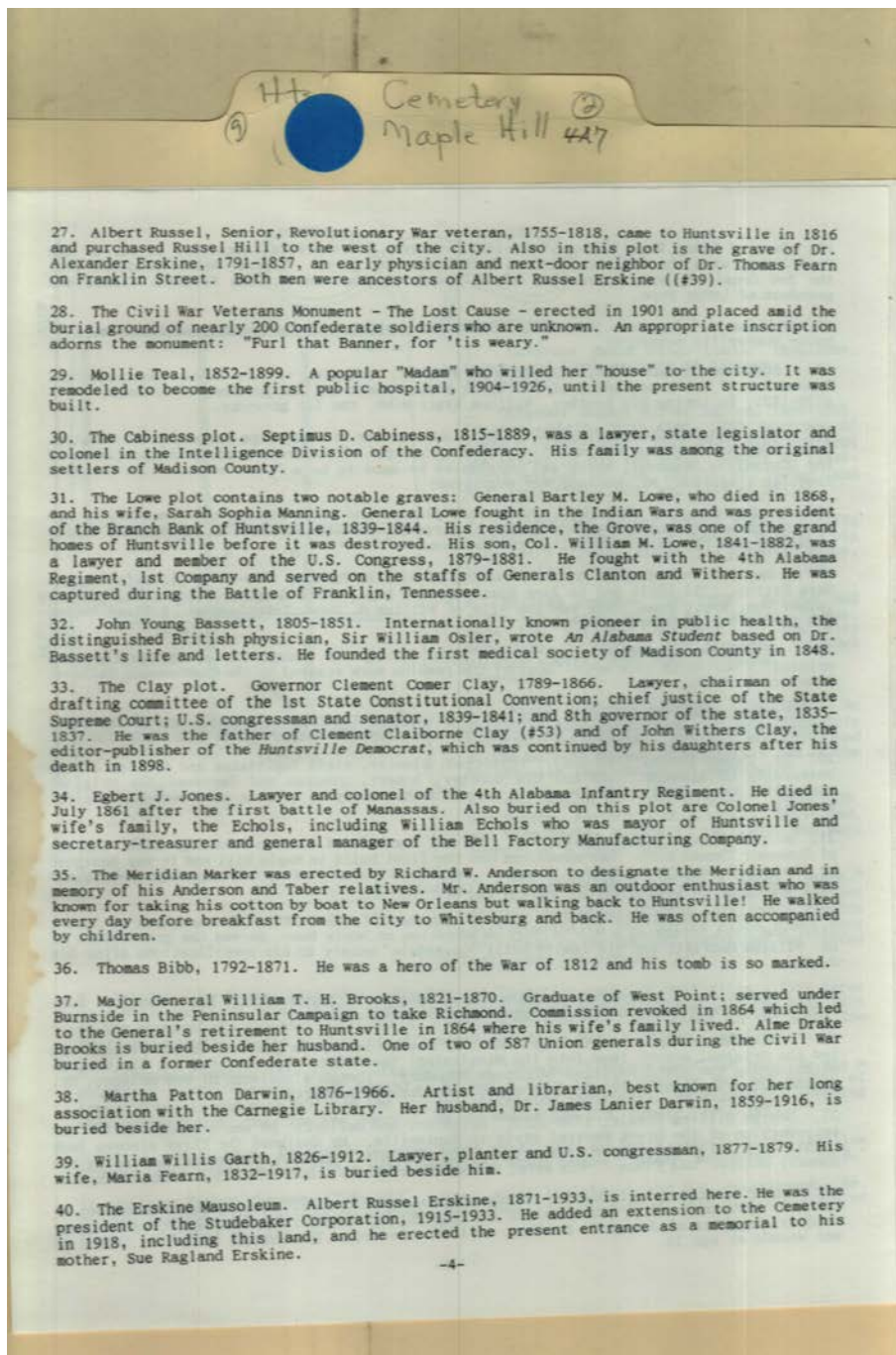
**Places:**

Huntsville, AL



**Types:**  
brochure

Frances Cabaniss Roberts Collection: Series 4, Subseries A, Box 7, Folder 2  
 Cemetery Notes, Correspondence, Maps, and Drawings, undated  
 Image 17 r04a07-02-000-0016 [Contents](#) [Index](#) [About](#)



**Names:**

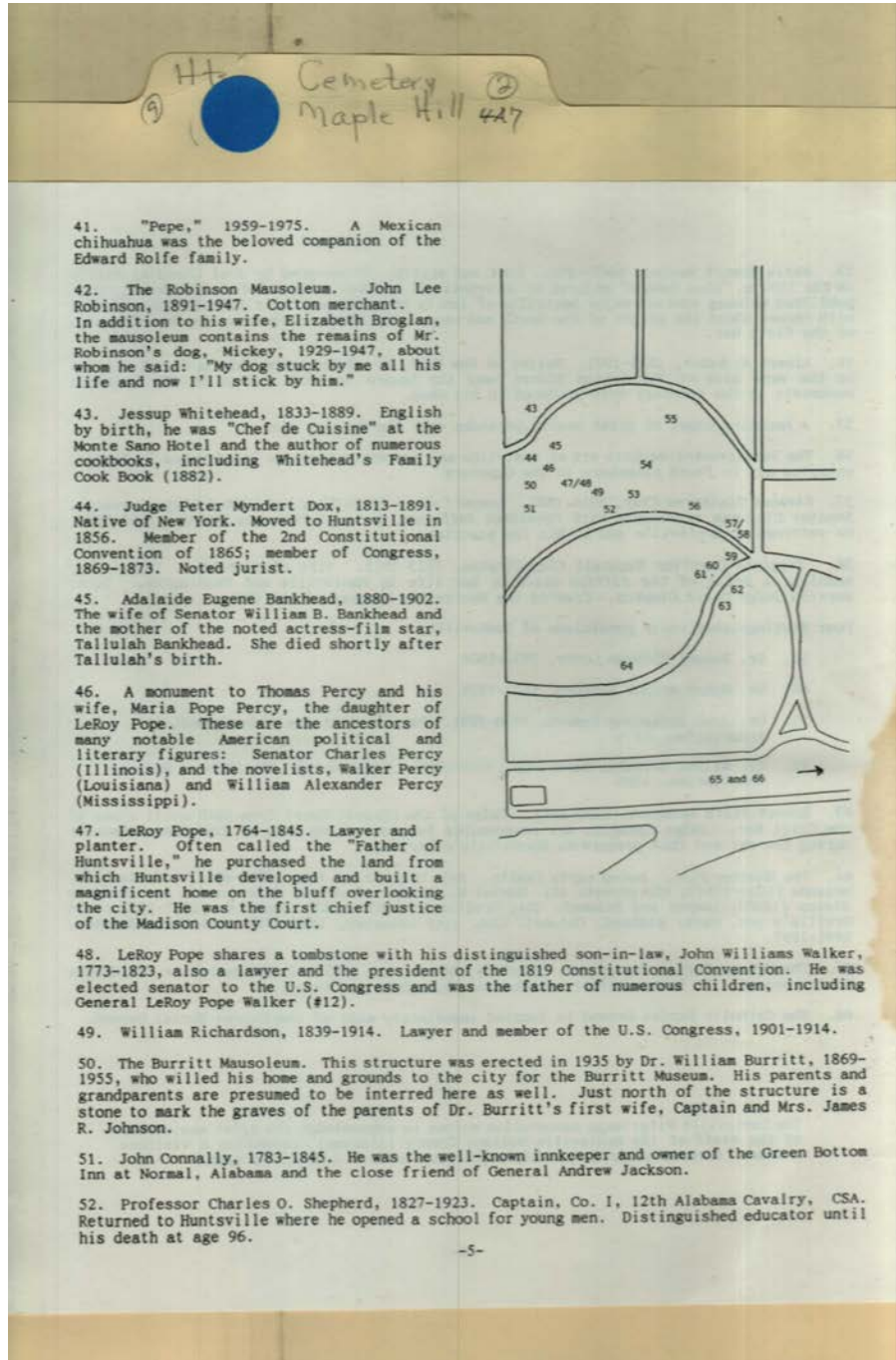
- |                      |                      |                       |                     |
|----------------------|----------------------|-----------------------|---------------------|
| Anderson, Richard W. | Clay, Clement        | Erskine, Albert       | Lowe, William M.,   |
| Bassett, John Young  | Claiborne            | Russel                | Col.                |
| Bibb, Thomas         | Clay, Clement Comer, | Erskine, Sue Ragland  | Meridian marker     |
| Brooks, Alme Drake   | Gov.                 | Garth, Maria Fearn    | Osler, William, Sir |
| Brooks, William T.   | Clay, John Withers   | Garth, William Willis | Russel, Albert, Sr. |
| H., Maj. Gen.        | Darwin, James        | Jones, Egbert J.      | Studebaker          |
| Cabiness, Septimus   | Lanier, Dr.          | Lowe, Bartley M.,     | Corporation         |
| D.                   | Darwin, Martha       | Gen.                  | Teal, Mollie        |
| Civil War Veterans   | Patton               | Lowe, Sarah Sophia    |                     |
| Monument             | Echols, William      | Manning               |                     |

**Places:**

Huntsville, AL

**Types:**  
brochure

Frances Cabaniss Roberts Collection: Series 4, Subseries A, Box 7, Folder 2  
 Cemetery Notes, Correspondence, Maps, and Drawings, undated  
 Image 18 r04a07-02-000-0017 [Contents](#) [Index](#) [About](#)



**Names:**

Bankhead, Adelaide Eugene  
 Bankhead, Tallulah  
 Bankhead, William B., Sen.  
 Burritt, William, Dr.  
 Connally, John  
 Dox, Peter Myndert, Judge

Green Bottom Inn  
 Johnson, James R., Capt. & Mrs.  
 Percy, Charles, Charles, Sen.  
 Percy, Maria Pope  
 Percy, Thomas  
 Percy, Walker

Percy, William Walker  
 Pope, LeRoy  
 Richardson, William  
 Robinson, Elizabeth Broglan  
 Robinson, John Lee  
 Shepherd, Charles O., Prof.

Walker, John Williams  
 Walker, LeRoy Pope, Gen.  
 Whitehead, Jessup  
 Mickey - dog  
 Pepe - chihuahua

**Places:**

Huntsville, AL  
 Illinois

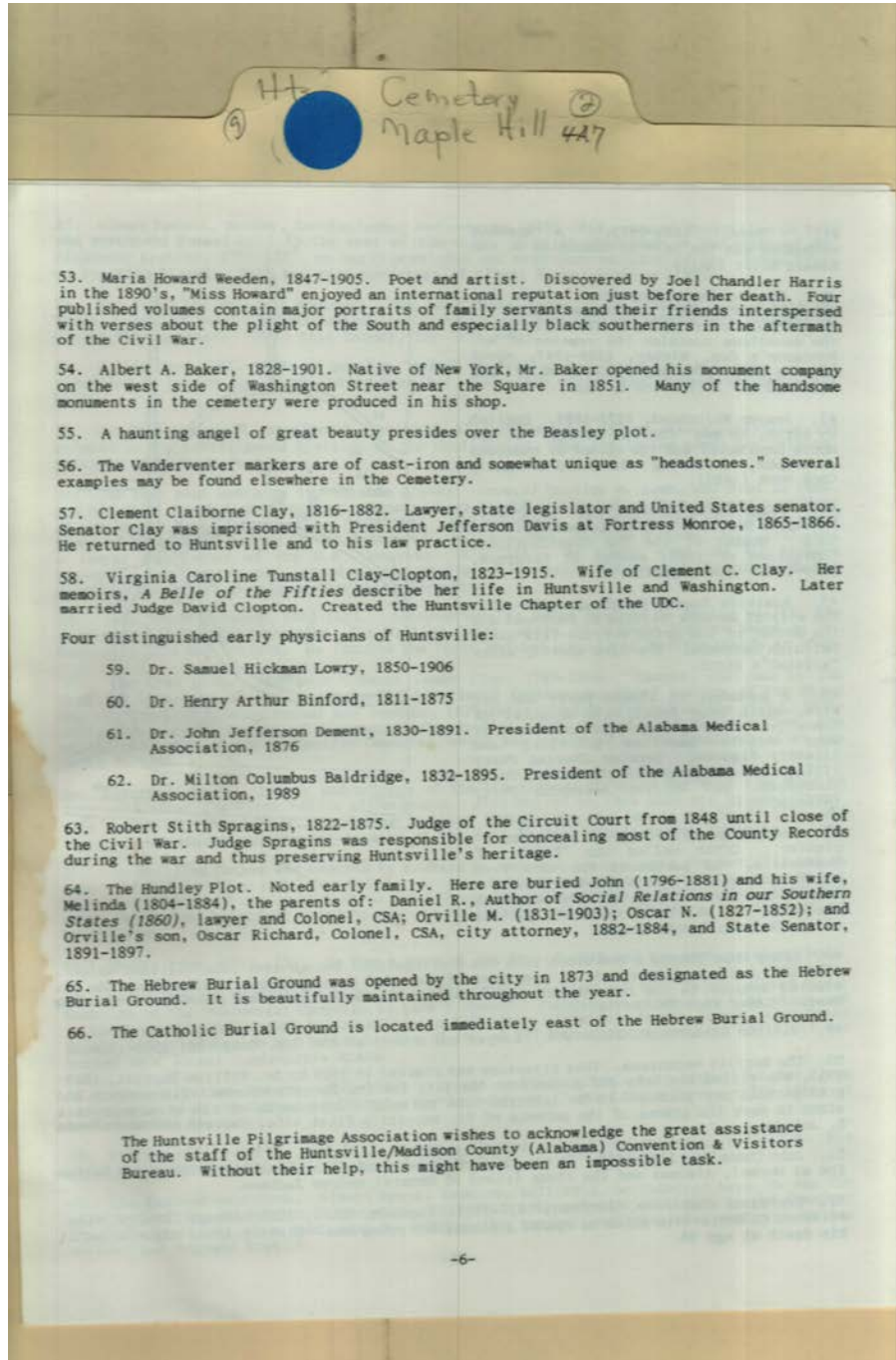
Louisiana  
 Mississippi

Normal, AL

**Types:**  
brochure



Frances Cabaniss Roberts Collection: Series 4, Subseries A, Box 7, Folder 2  
 Cemetery Notes, Correspondence, Maps, and Drawings, undated  
 Image 19 r04a07-02-000-0018 [Contents](#) [Index](#) [About](#)



**Names:**

Baker, Albert A.  
 Baldrige, Milton  
 Columbus, Dr.  
 Beasley plot angel  
 Binford, Henry  
 Arthur, Dr.  
 Clay, Clement C.  
 Clay, Clement  
 Claiborne

Clay-Clopton,  
 Virginia Caroline  
 Tunstall  
 Clopton, David,  
 Judge  
 Davis, Jefferson,  
 President  
 Dement, John  
 Jefferson, Dr.

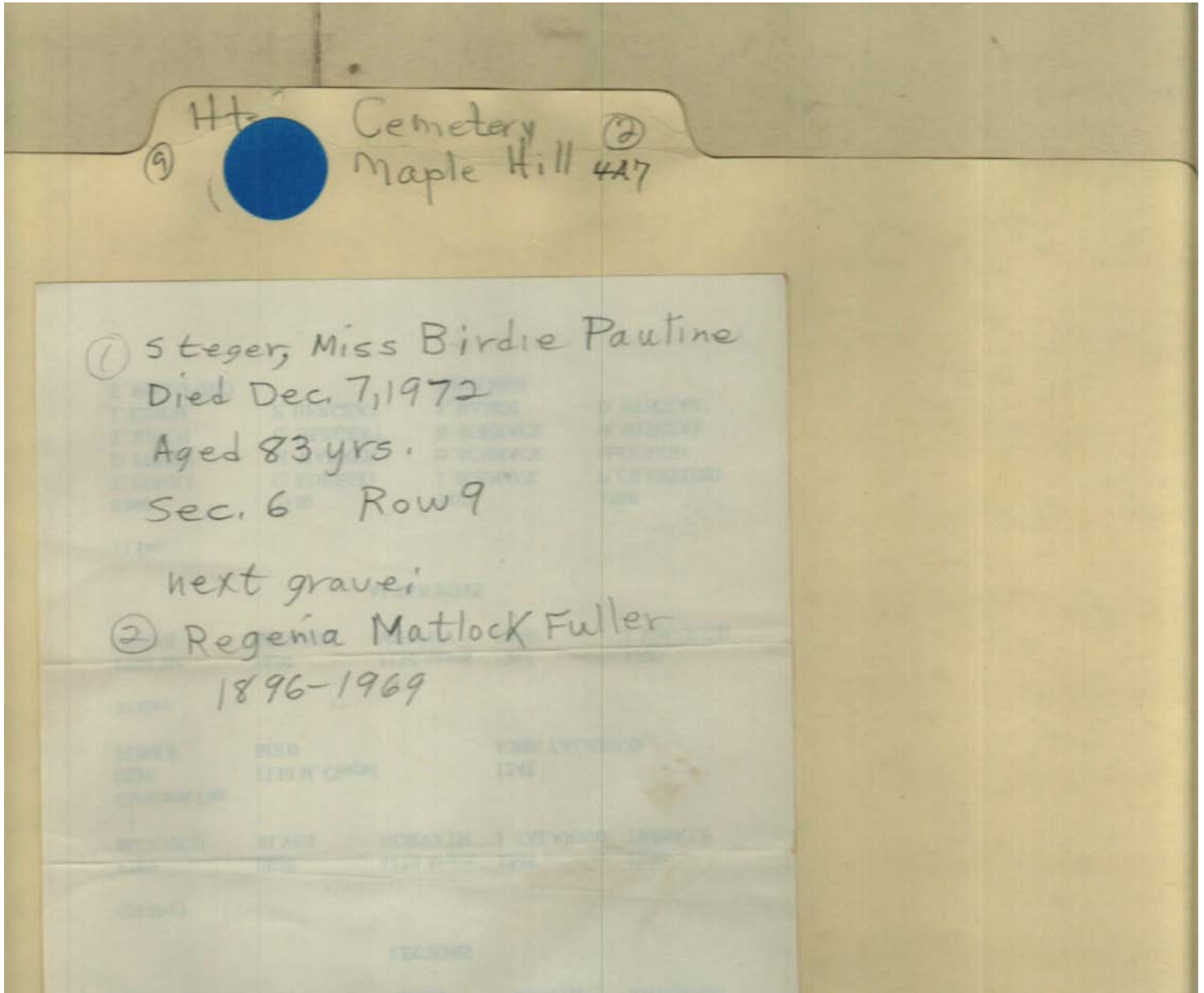
Harris, Joel Chandler  
 Hundley plot  
 Hundley, John &  
 Melinda  
 Huntsville Pilgrimage  
 Association  
 Lowry, Samuel  
 Hickman, Dr.

Spragins, Robert  
 Stith, Judge  
 The Catholic Burial  
 Ground  
 The Hebrew Burial  
 Ground  
 Vanderventer markers  
 Weeden, Maria  
 Howard

**Places:**

Huntsville, AL

**Types:**  
brochure



Section 6

**Names:**

Fuller, Reginia  
Matlock

Steger, Birdie Pauline

**Places:**

Maple Hill Cem.,  
Huntsville, AL

**Types:**

list

Ht Cemetery Maple Hill 427

**SCHEDULES FOR THE HOLIDAYS**

(24 - 25 Dec) **USHERS**

2300-0100	0830	1245	1130	1700
BISS	MATT	HUNT	COLE	DESMOND
HEISMAN	WILLIFORD	MESTELLER	WRIGHT	KNIGHTON
LOSHBOUGH				
REDMON				

(31 Dec - 1 Jan)

1700	0830	1000	1130	1700
REDMON	LOSHBOUGH	HEISHMAN	COLE	BRUNO
STRAWIARSKI	MATT	HUNT	WRIGHT	KNIGHTON

**LECTORS**

(24 Dec)

1700	0830	1130 Annex	1245	1700
McGOUGH	ALVES	HORVATH	J. TALARICO	TRENKLE

Christmas Day

0830	1130 M. Chapel	1245
FUNKE	BIRD	JOHN TALARICO

31 Dec

1700 Sat	0830	1130 Annex	1245	1700
OWENS	ACCARDI	MURPHY	CAMP	J. McGOUGH

**ALTAR BOYS**

31 Dec

0380	1130	1245	1700
T. PIROLI	C. KORESKE	J. SCHNACK	P. CRAWFORD
D. PIROLI	M. WARREN	D. SCHNACK	McGOUGH
T. KINCH	G. HERGERT	R. SCHNACK	M. WITCZAK
J. KINCH	P. HERGERT	T. RAMOS	D. WITCZAK
E. WILLIFORD		J. PALMER	

**Names:**

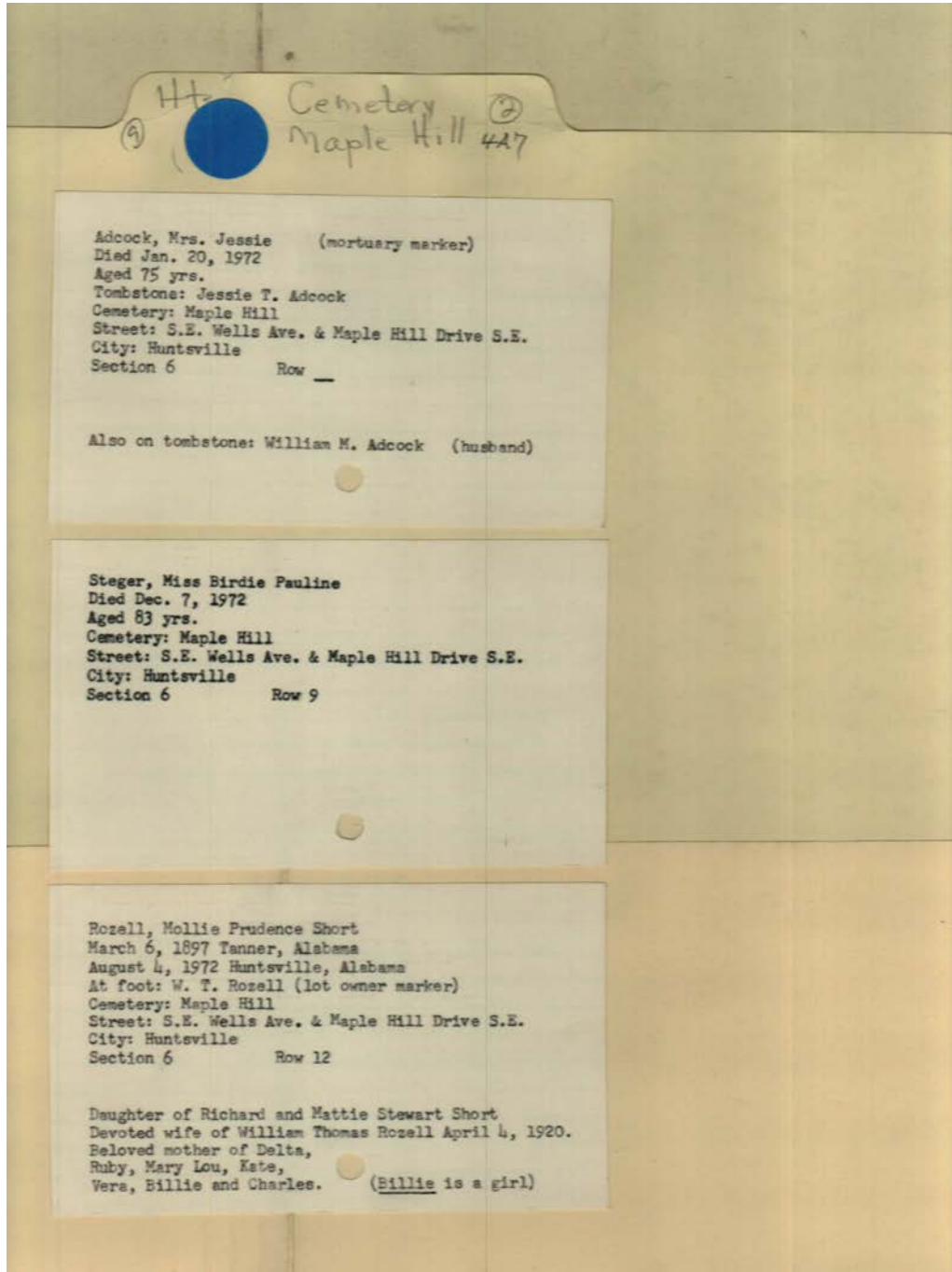
Ushers, Lectors and  
 Altar Boys schedule

**Types:**

list

**Dates:**

December



Section 6

**Names:**

Adcock, Jessie T.  
Adcock, William M.  
Rozell, Delta, Ruby,  
May Lou, Kate,

Vera, Billie &  
Charles  
Rozell, Mollie  
Prudence Short

Rozell, William  
Thomas  
Short, Richard &  
Mattie Stewart

Steger, Birdie Pauline

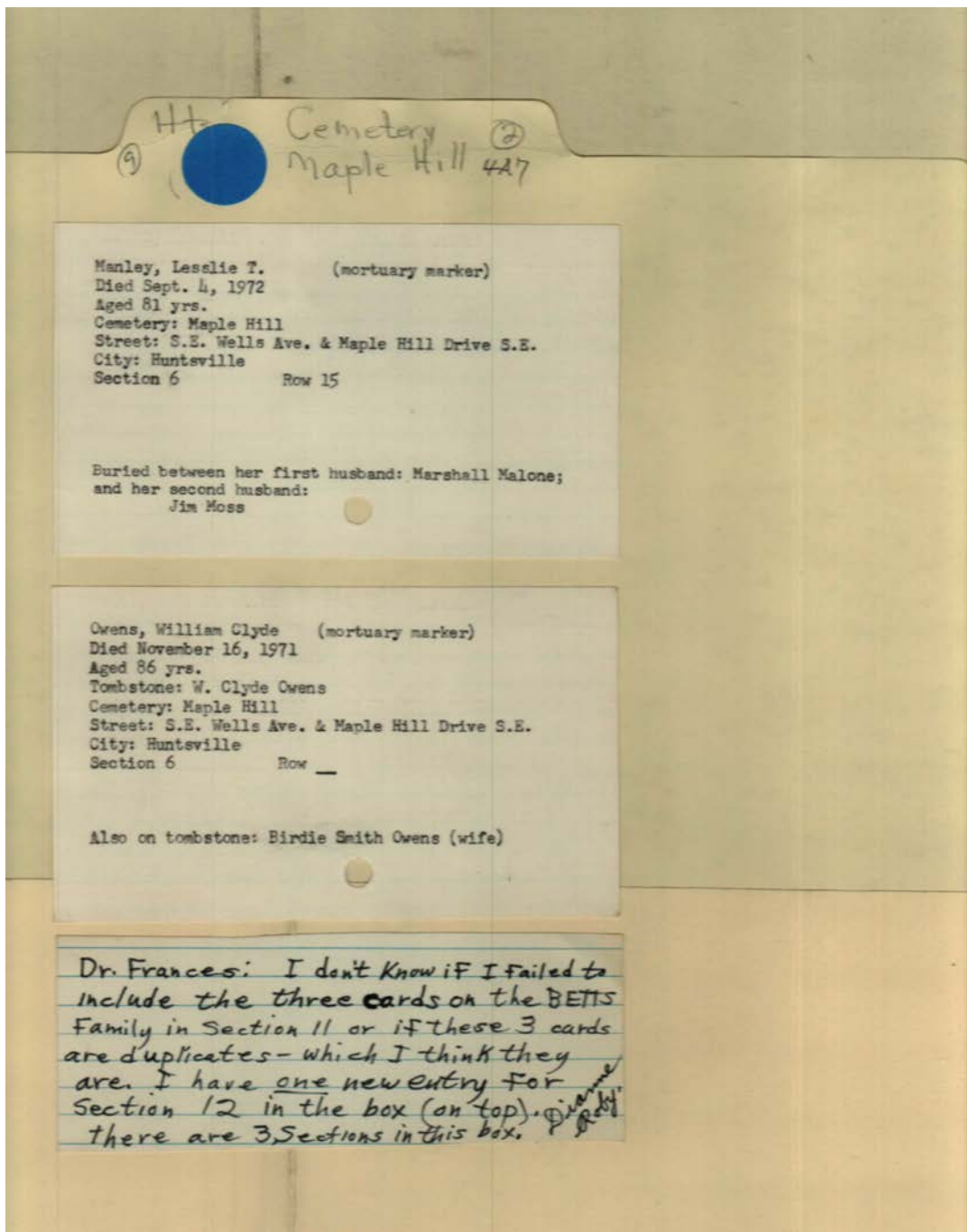
**Places:**

Maple Hill Cem.,  
Huntsville, AL

**Types:**

list





Section 6

**Names:**

Malone, Marshall  
Manley, Lesslie T.

Moss, Jim  
Owens, Birdie Smith

Owens, William  
Clyde

Roberts, Frances, Dr.  
Roby, Dianne

**Places:**

Huntsville, AL

Maple Hill Cem.,  
Huntsville, AL

**Types:**

list

memo

**Frances Cabaniss Roberts Collection: Series 4, Subseries A, Box 7, Folder 2  
Cemetery Notes, Correspondence, Maps, and Drawings, undated**

[Contents](#)   [Index](#)   [About](#)

**Table of Contents**

[Image 1](#) (r04a07-02-000-0001)  
[Image 2](#) (r04a07-02-000-0002)  
[Image 3](#) (r04a07-02-000-0003)  
[Image 4](#) (r04a07-02-000-0004)  
[Image 5](#) (r04a07-02-000-0005)  
[Image 6](#) (r04a07-02-000-0006)  
[Image 7](#) (r04a07-02-000-0007)

[Image 8](#) (r04a07-02-000-0008)  
[Image 9](#) (r04a07-02-000-0009)  
[Image 10](#) (r04a07-02-000-0010)  
[Image 11](#) (r04a07-02-000-0019)  
[Image 12](#) (r04a07-02-000-0011)  
[Image 13](#) (r04a07-02-000-0012)  
[Image 14](#) (r04a07-02-000-0013)

[Image 15](#) (r04a07-02-000-0014)  
[Image 16](#) (r04a07-02-000-0015)  
[Image 17](#) (r04a07-02-000-0016)  
[Image 18](#) (r04a07-02-000-0017)  
[Image 19](#) (r04a07-02-000-0018)  
[Image 20](#) (r04a07-02-000-0020)  
[Image 21](#) (r04a07-02-000-0021)

[Image 22](#) (r04a07-02-000-0022)  
[Image 23](#) (r04a07-02-000-0023)  
[Table of Contents](#)  
[Name & Place Index](#)  
[About the Collection](#)

**Frances Cabaniss Roberts Collection: Series 4, Subseries A, Box 7, Folder 2  
Cemetery Notes, Correspondence, Maps, and Drawings, undated**

[Contents](#) [Index](#) [About](#)

**Name & Place Index**

Adcock, Jessie T. [22](#)  
Adcock, Jessie [1](#)  
Adcock, William M. [1](#), [22](#)  
All deeds to city of Huntsville for Maple Hill Cemetery [3](#)  
Anderson, Richard W. [17](#)  
Baker, Albert A. [19](#)  
Baldrige, Milton Columbus, Dr. [19](#)  
Bankhead, Adelaide Eugene [18](#)  
Bankhead, Tallulah [18](#)  
Bankhead, William B., Sen. [18](#)  
Bassett, John Young [17](#)  
Beasley plot angel [19](#)  
Bibb, Mary S. Chambers [16](#)  
Bibb, Thomas, Gov. [16](#)  
Bibb, Thomas [17](#)  
Bibb, William Dandridge [16](#)  
Bibb, William Wyatt, Gov. [16](#)  
Binford, Hery Arthur, Dr. [19](#)  
Books in the Episcopal Church Office [12](#)  
Bradley, Joseph C. [16](#)  
Bradley, Susan [16](#)  
Brandon, Mary Sample [15](#)  
Brandon, Thomas [15](#)  
Brandon, William [15](#)  
Brandontown Cemetery (Negro) [13](#)  
Brooks, Alme Drake [17](#)  
Brooks, William T. H., Maj. Gen. [17](#)  
Burritt, William, Dr. [16](#), [18](#)  
Cabiness, Septimus D. [17](#)  
Chapman, Reuben, Gov. [15](#)  
Civil War Veterans Monument [17](#)  
Clay, Clement C. [19](#)  
Clay, Clement Claiborne [17](#), [19](#)  
Clay, Clement Comer, Gov. [17](#)  
Clay, John Withers [17](#)  
Clay-Clopton, Virginia Caroline Tunstall [19](#)  
Clay-Clopton, Virginia [15](#)  
Clemens, Jeremiah [15](#)  
Clemens, Samuel (Mark Twain) [15](#)  
Clopton, Annie Bradshaw [15](#)  
Clopton, David, Judge [19](#)  
Confirmations [12](#)  
Connally, John [18](#)  
Darwin, James Lanier, Dr. [17](#)  
Darwin, Martha Patton [17](#)  
Davis, Jefferson, President [19](#)  
Davis, Nora [15](#)  
Davis, Zebulon Pike [15](#)  
Deeds to city of Huntsville for Maple Hill Cemetery [6](#),  
[7](#), [8](#)  
Dement, John Jefferson, Dr. [19](#)  
Dox, Peter Myndert, Judge [18](#)  
Dox, Peter, Judge [16](#)  
Echols, William [17](#)  
Erskine, Albert Russel [17](#)  
Erskine, Sue Ragland [17](#)  
Fearn, Robert [16](#)  
Fearn, Thomas, Dr. [16](#)  
Figures, William Bibb [16](#)  
Freeman, Thomas [16](#)  
Fuller, Reginia Matlock [20](#)  
Garth, Maria Fearn [17](#)  
Garth, William Willis [17](#)  
Glenwood Cemetery (Negro) [13](#)  
Green Bottom Inn [18](#)  
Harris, Joel Chandler [19](#)  
Henson, Margaret Hutchens [14](#)  
Hundley plot [19](#)  
Hundley, John & Melinda [19](#)  
Huntsville cemetery locations [13](#)  
Huntsville Pilgrimage Association [14](#), [19](#)  
Huntsville, AL [3](#), [4](#), [6](#), [7](#), [8](#), [9](#), [12](#), [13](#), [14](#), [15](#), [16](#), [17](#), [18](#),  
[19](#), [23](#)  
Illinois [18](#)  
In Memory of Yesterday: Maple Hill Cemetery ? [14](#)  
Jackson, Andrew, Gen. [16](#)  
Johnson, Dorothy Scott [14](#)  
Johnson, Gilbert Motier Lafayette, Brevet Gen. [16](#)  
Johnson, James R., Capt. & Mrs. [18](#)  
Jones, Egbert J. [17](#)  
Jones, Leroy Hipkins [15](#)  
Jones, Lewellan [15](#)  
Jones, Nancy [15](#)  
Jones, William H. [15](#)  
Knights of Pythias symbol [10](#), [11](#)  
Lewis, David Peter, Gov. [15](#)  
Louisiana [18](#)  
Lowe, Bartley M., Gen. [17](#)  
Lowe, Sarah Sophia Manning [17](#)  
Lowe, William M., Col. [17](#)  
Lowry, Samuel Hickman, Dr. [19](#)  
Malone, Marshall [1](#), [23](#)  
Mammy d. 1912 [15](#)  
Mammy died 1879 [15](#)  
Manley, Lesslie T. [1](#), [23](#)  
Maple Hill Cem., Huntsville, AL [1](#), [2](#), [3](#), [5](#), [10](#), [11](#), [20](#),  
[22](#), [23](#)  
Maple Hill Cemetery [4](#), [13](#)  
McClung, James White [16](#)  
Meridian marker [17](#)  
Mickey - dog [18](#)  
Mississippi [18](#)  
Mitchell, Anthony John [15](#)

Mitchell, Lena [15](#)  
Miutchell, Mary Rachel [15](#)  
Moore, David, Dr. [16](#)  
Moss, Jim [1](#), [23](#)  
Neal, Stephen [16](#)  
No, 4 Hall Cemetery (Negro) [13](#)  
Normal, AL [18](#)  
Northside Cemetery (Negro) [13](#)  
Osler, William, Sir [17](#)  
Owens, Birdie Smith [1](#), [23](#)  
Owens, William Clyde [1](#), [23](#)  
Patton, Martha Hays [16](#)  
Patton, Robert Miller, Gov. [15](#)  
Patton, Robert W. [15](#)  
Patton, William A. [15](#)  
Patton, William [16](#)  
Pepe - chihuahua [18](#)  
Percy, Charles, Charles, Sen. [18](#)  
Percy, Maria Pope [18](#)  
Percy, Thomas [18](#)  
Percy, Walker [18](#)  
Percy, William Walker [18](#)  
Pope, Jane Ramsey Patton [16](#)  
Pope, LeRoy [14](#), [18](#)  
Pope, William H. [16](#)  
Pope, Wyatt [16](#)  
Record, James [3](#)  
Register #1 and History [12](#)  
Register #2 [12](#)  
Register #3 [12](#)  
Rice, Elisha H. [15](#)  
Rice, Mary Pittman [15](#)  
Richardson, William [18](#)  
Roberts, Frances, Dr. [23](#)  
Robinson, Elizabeth Broglan [18](#)  
Robinson, John Lee [18](#)  
Robinson, William [16](#)  
Roby, Dianne [23](#)  
Rose, Mary [16](#)  
Rose, N. B. [16](#)  
Rozell children [1](#)  
Rozell, Delta, Ruby, May Lou, Kate, Vera, Billie & Charles [22](#)  
Rozell, Mollie Prudence Short [1](#), [22](#)  
Rozell, William Thomas [1](#), [22](#)  
Russel, Albert, Sr. [17](#)  
Section 6 new entries [2](#)  
Section along McClung Ave. [5](#)  
Shepherd, Charles O., Prof. [18](#)  
Short, Richard & Mattie Stewart [1](#), [22](#)  
South half of Maple Hill Cemetery [9](#)  
Spragins, Robert Stith, Judge [19](#)  
Steele, Eliza Weaver [16](#)  
Steele, George Gilliam [16](#)  
Steger, Birdie Pauline [20](#), [22](#)  
Studebaker Corporation [17](#)  
Taylor, Thomas J., Judge [14](#)  
Teal, Mollie [17](#)  
The Catholic Burial Ground [19](#)  
The Hebrew Burial Ground [19](#)  
Thurston, Edgar M. [11](#)  
Twickenham Woman's Club [14](#)  
Union soldiers [16](#)  
Ushers, Lectors and Altar Boys schedule [21](#)  
Vanderventer markers [19](#)  
Vestry Minutes [12](#)  
Walker, John Williams [18](#)  
Walker, LeRoy Pope, Gen. [18](#)  
Walker, LeRoy Pope [16](#)  
Wasson, Joberta [14](#)  
Weeden, Maria Howard [19](#)  
Whitehead, Jessup [18](#)  
Wills, Andrew [16](#)

# Frances Cabaniss Roberts Collection

**Preferred Citation:** Frances Cabaniss Roberts Collection, Archives and Special Collections, M. Louis Salmon Library, University of Alabama in Huntsville, Huntsville, AL.

**Collection Scope and Content:** The Collection of 114 Linear ft. includes a total of 156 Archival Boxes. The Frances Cabaniss Roberts collection covers the historical records of the Cabaniss Roberts family. This collection contains extensive correspondence records of the Cabaniss Roberts family circa 1830 to 1930.

**Archives/Special Collections Access Restrictions:** None

**Conditions Governing Use:** This material may be protected under U. S. Copyright Law (Title 17, U.S. Code) which governs the making of photocopies or reproductions of copyrighted materials. You may use the digitized material for private study, scholarship, or research. Though the University of Alabama in Huntsville Archives and Special Collections has physical ownership of the material in its collections, in some cases we may not own the copyright to the material. It is the patron's obligation to determine and satisfy copyright restrictions when publishing or otherwise distributing materials found in our collections.

**Provenance:** Gift of Johanna Shields on October 28, 2006.



THE UNIVERSITY OF  
ALABAMA IN HUNTSVILLE

**The UAH Archives and Special Collections  
M. Louis Salmon Library**