

Names:

Allen, Ed
Buffaloe, Lipscol
Eslick, Willa M.
Gowan, Miriam
Harris, Delilah

Harris, Jack
Huntsville Board of
Zoning Adjustment
McCown, Gene
Luther

McCown, James R.
McCullough, Jim
Perry, Kathleen W.
Perry, Robert
Ragland, Edward R.

Ragland, Sue Turner
Whitfield, Anne S.
Wilson, Steve

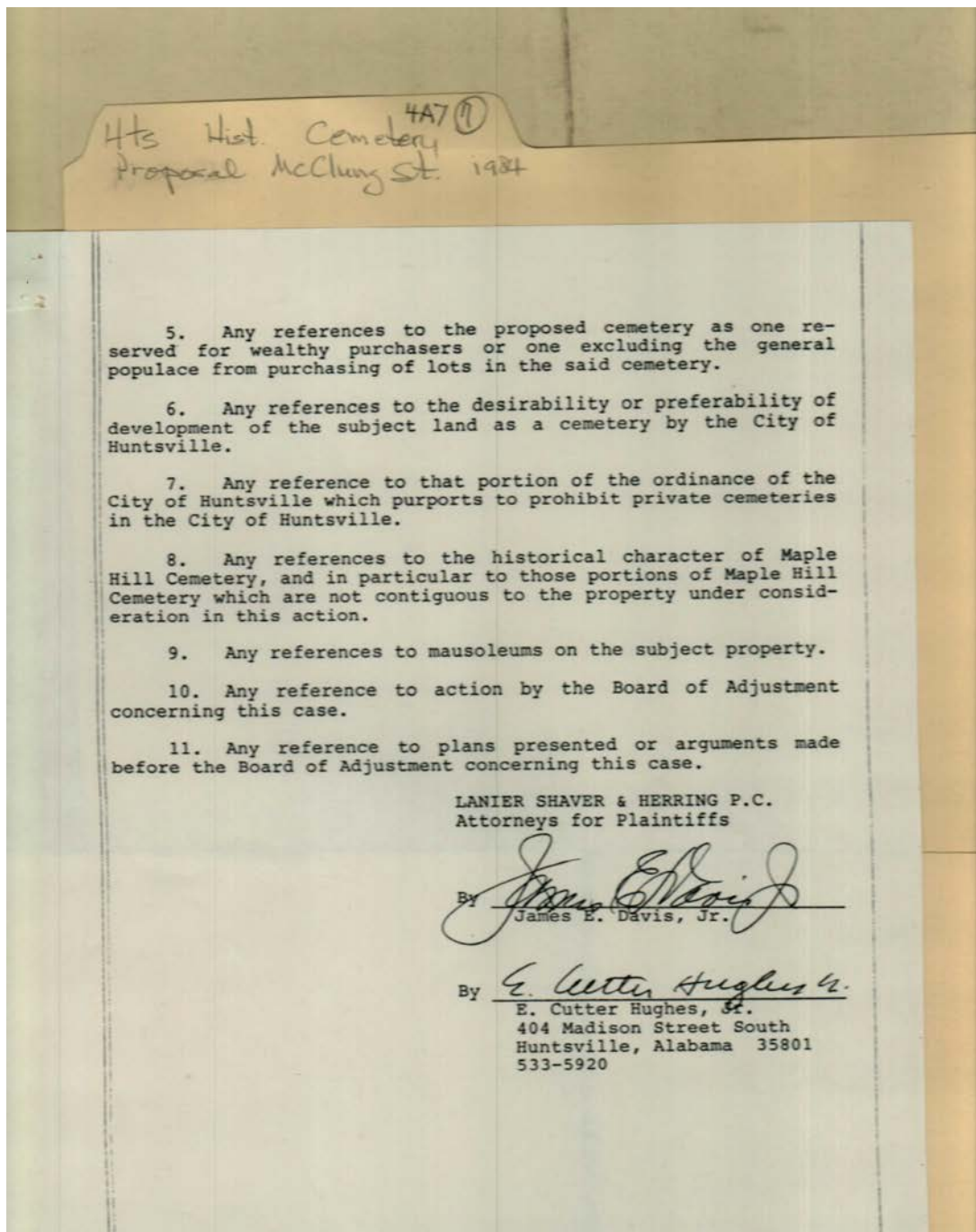
Places:

Madison Co., AL

Types:

circuit court

Dates:



Names:

Davis, James E., Jr.
Hughes, E. Cutter, Jr.

Huntsville Board of
Zoning Adjustment

Maple Hill Cemetery

Places:

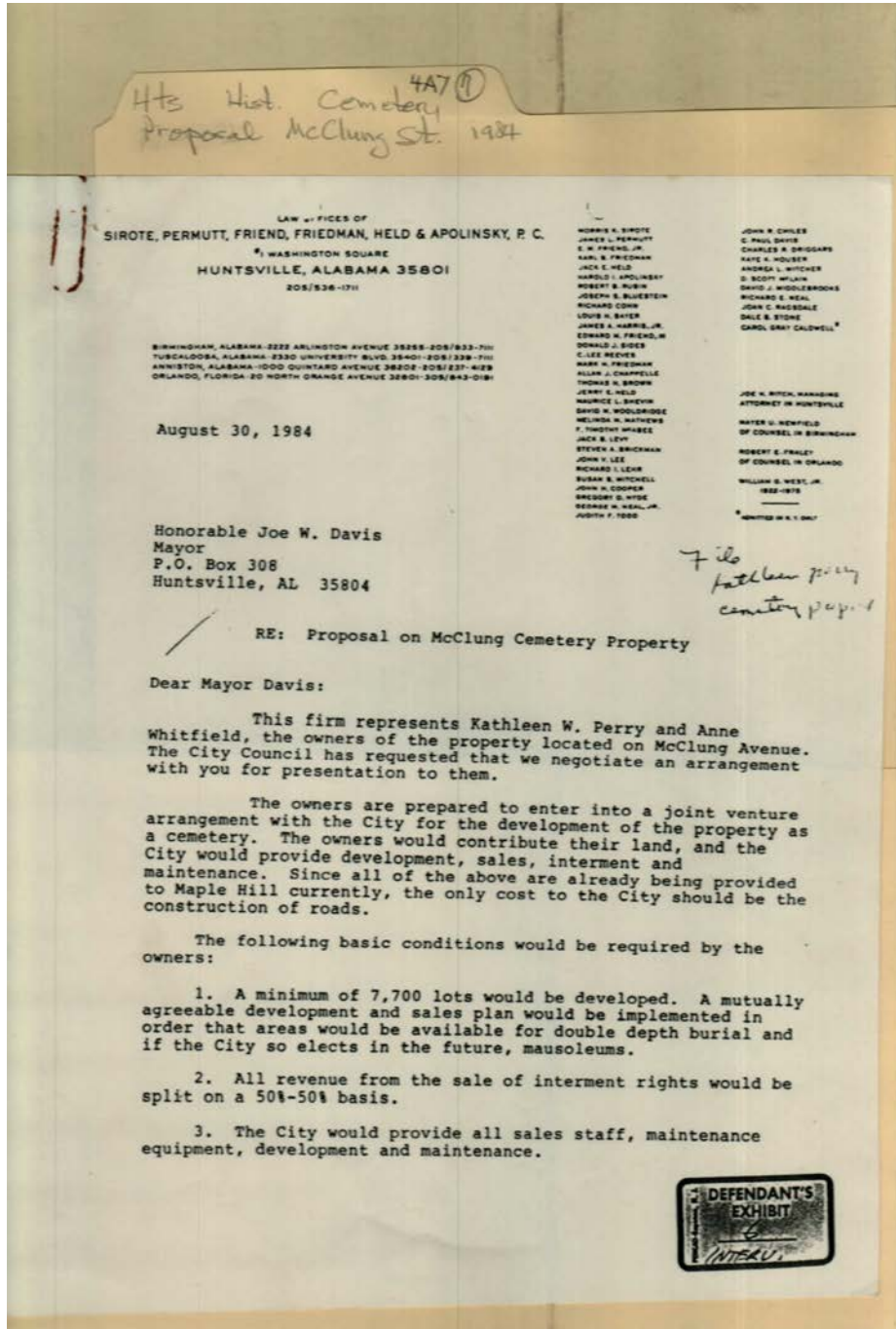
Madison Co., AL

Types:

circuit court

Dates:

1984



Names:

Davis, Joe W., Mayor

McClung Cemetery
 property

Perry, Kathleen W.
 Whitfield, Anne

Places:

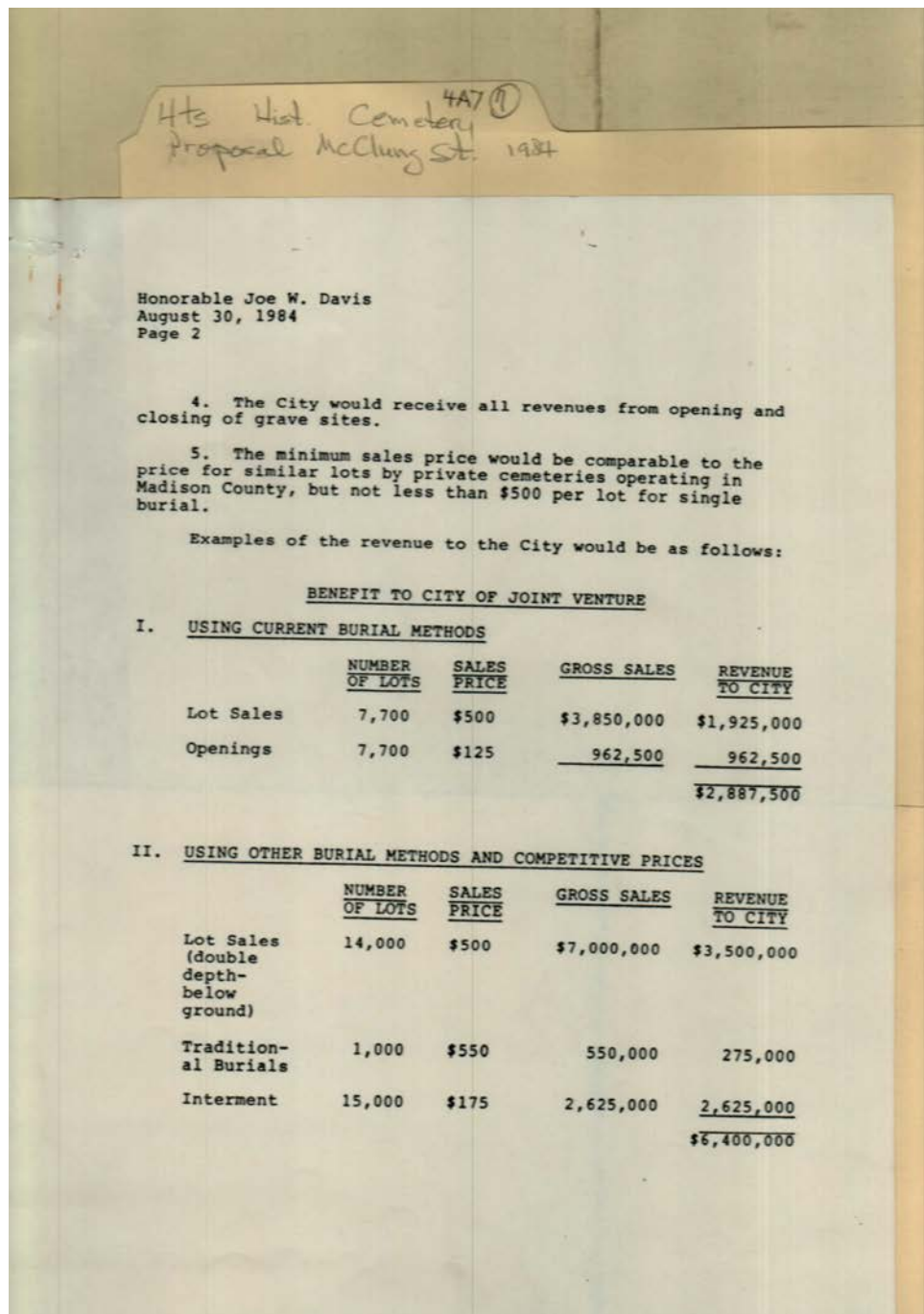
Huntsville, AL

Types:

correspondence

Dates:

Aug 30, 1984



Names:

Davis, Joe W., Mayor

Places:

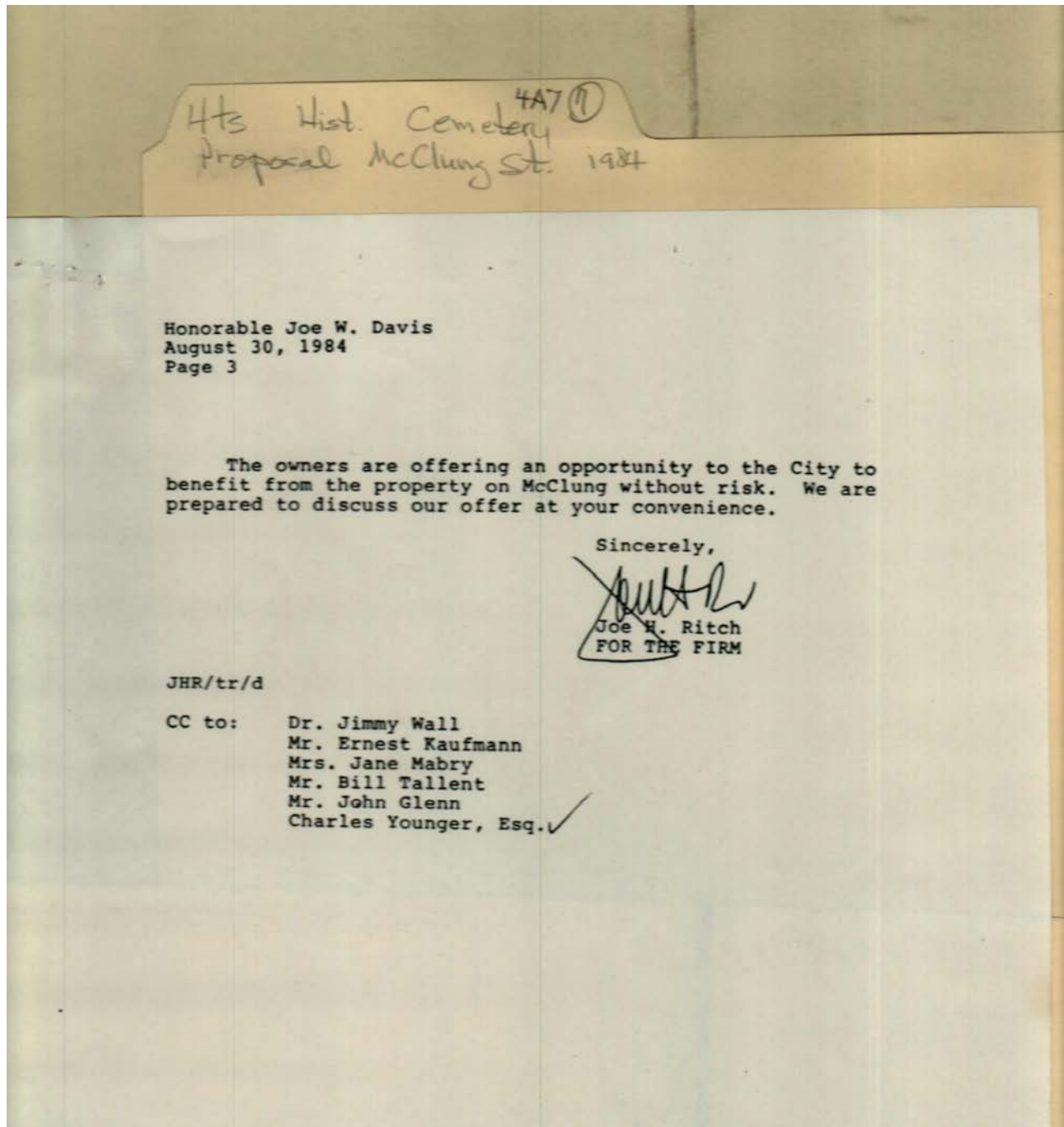
Huntsville, AL

Types:

correspondence

Dates:

Aug 30, 1984



Names:

Davis, Joe W., Mayor
Glenn, John
Kauffman, Ernest

Mabry, Jane
McClung Cemetery
property

Ritch, Joe H.
Tallent, Bill
Wall, Jimmy, Dr.

Younger, Charles

Places:

Huntsville, AL

Types:

correspondence

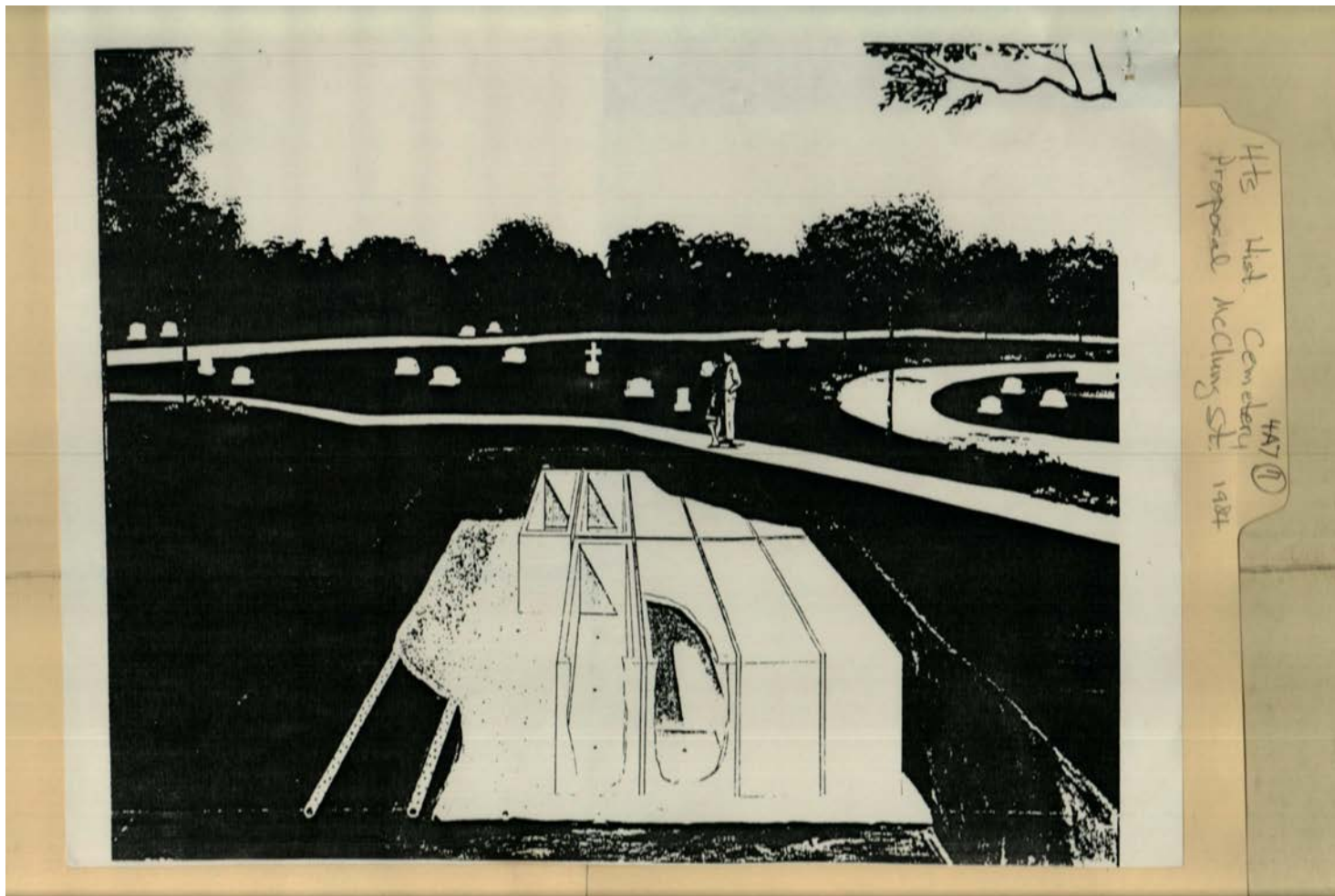
Dates:

Aug 30, 1984

Frances Cabaniss Roberts Collection: Series 4, Subseries A, Box 7, Folder 7

Cemetery Proposal, McClung St./Maple Hill Cemetery, 1984

Image 6 r04a07-07-000-0060 [Contents](#) [Index](#) [About](#)



Names:

McClung Street
proposal

Places:

Huntsville, AL

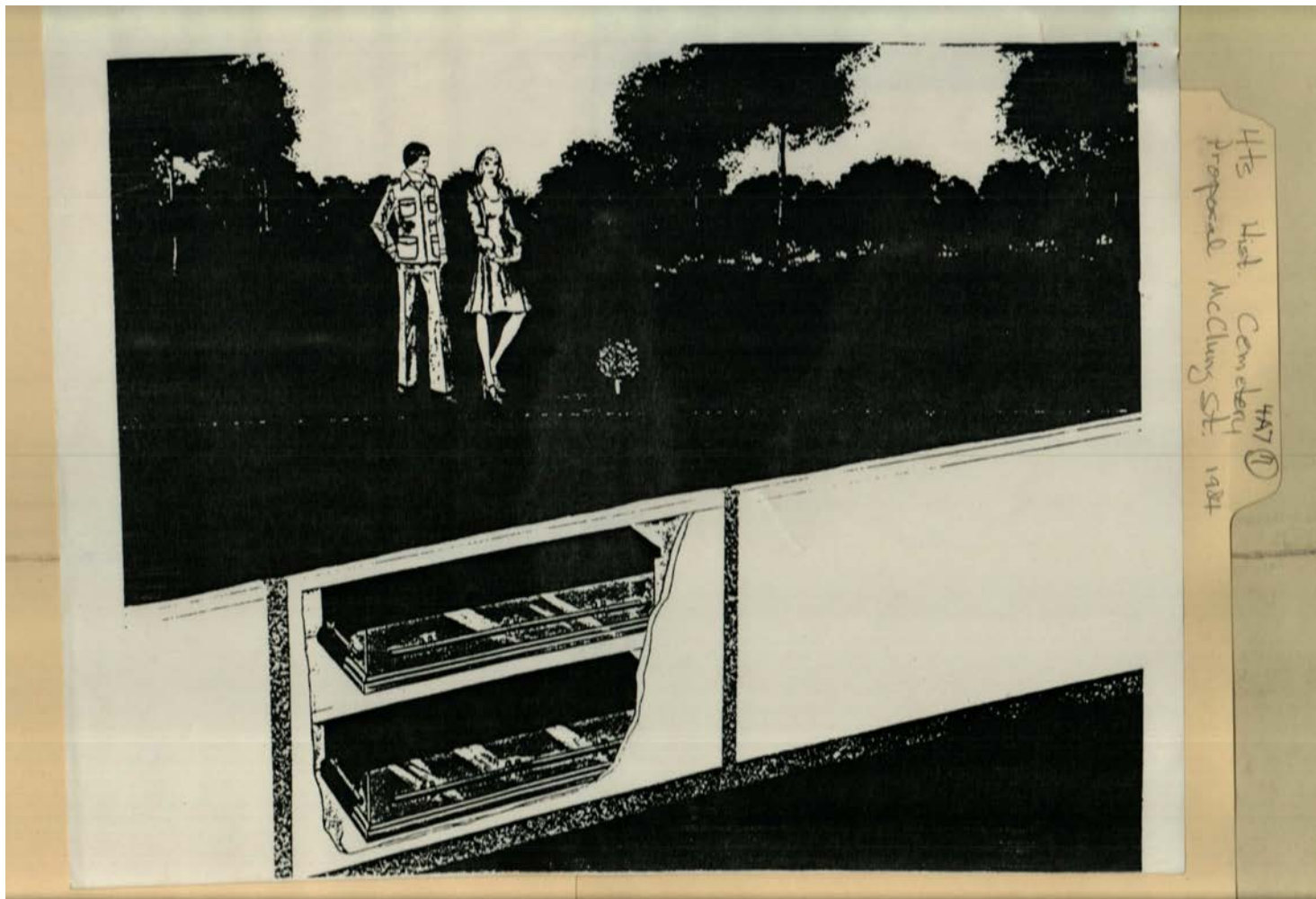
Types:

sketch

Frances Cabaniss Roberts Collection: Series 4, Subseries A, Box 7, Folder 7

Cemetery Proposal, McClung St./Maple Hill Cemetery, 1984

Image 7 r04a07-07-000-0061 [Contents](#) [Index](#) [About](#)



Names:

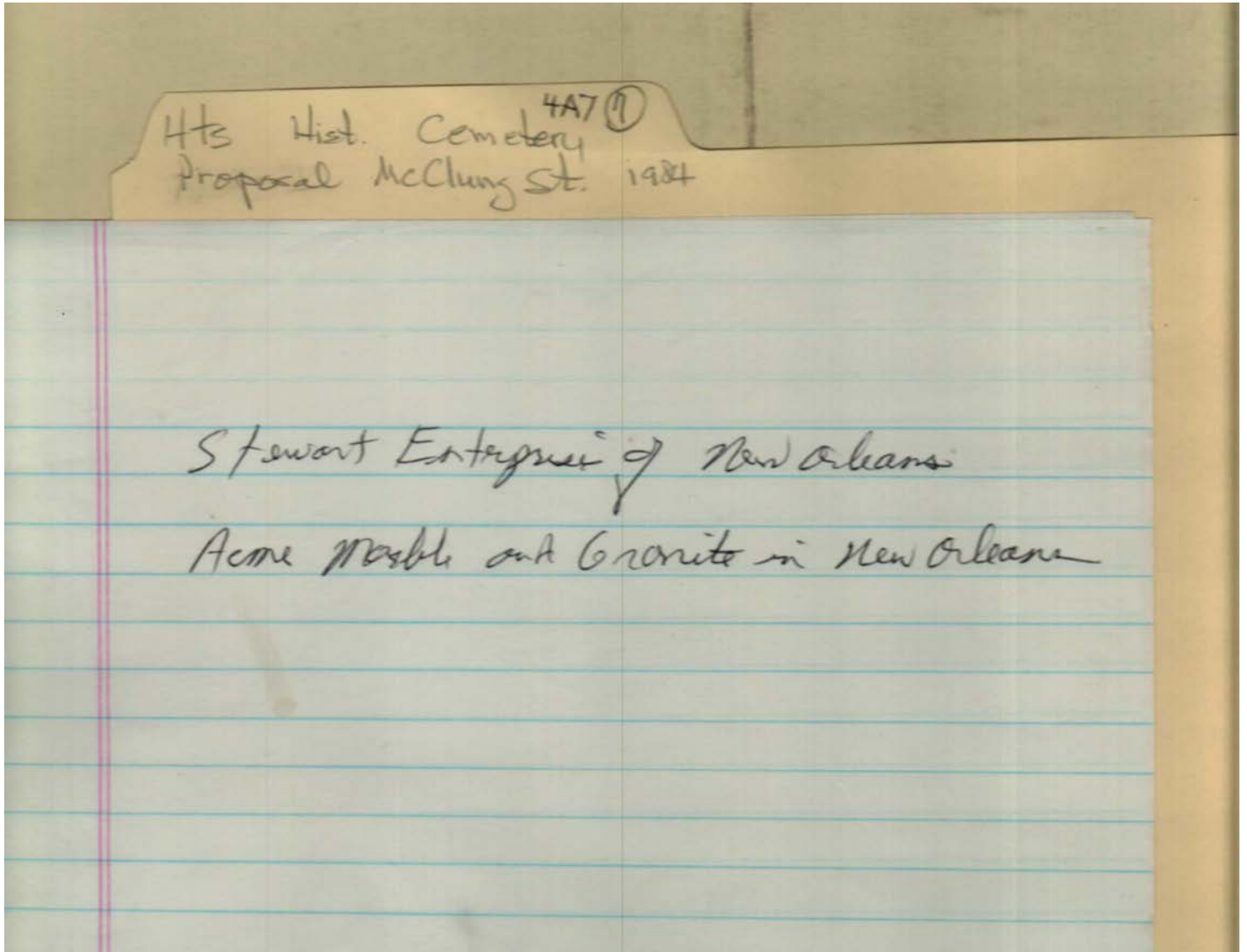
McClung Street
proposal

Places:

Huntsville, AL

Types:

sketch



Names:

Acme Marble and
Granite

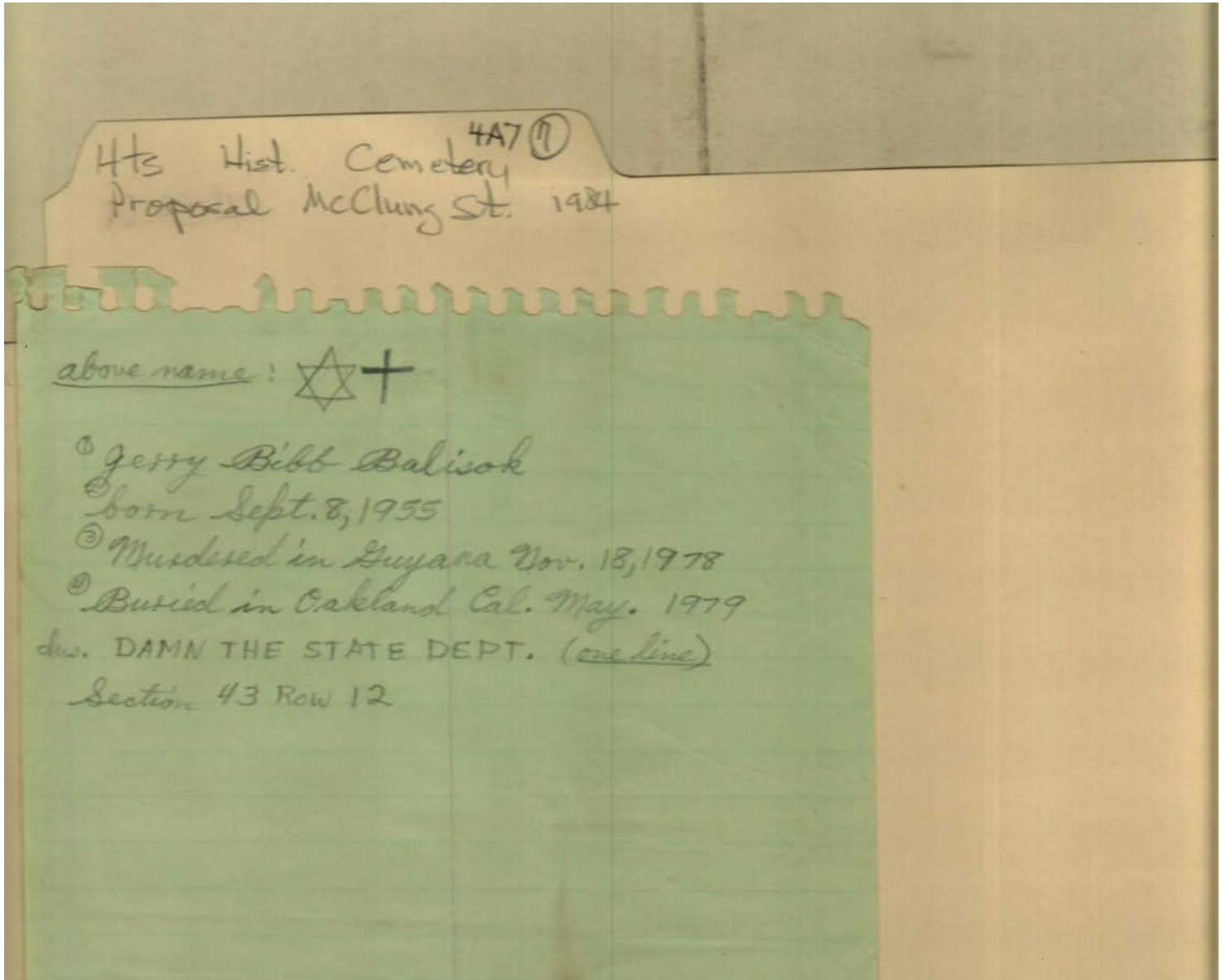
Stewart Enterprises

Places:

New Orleans, LA

Types:

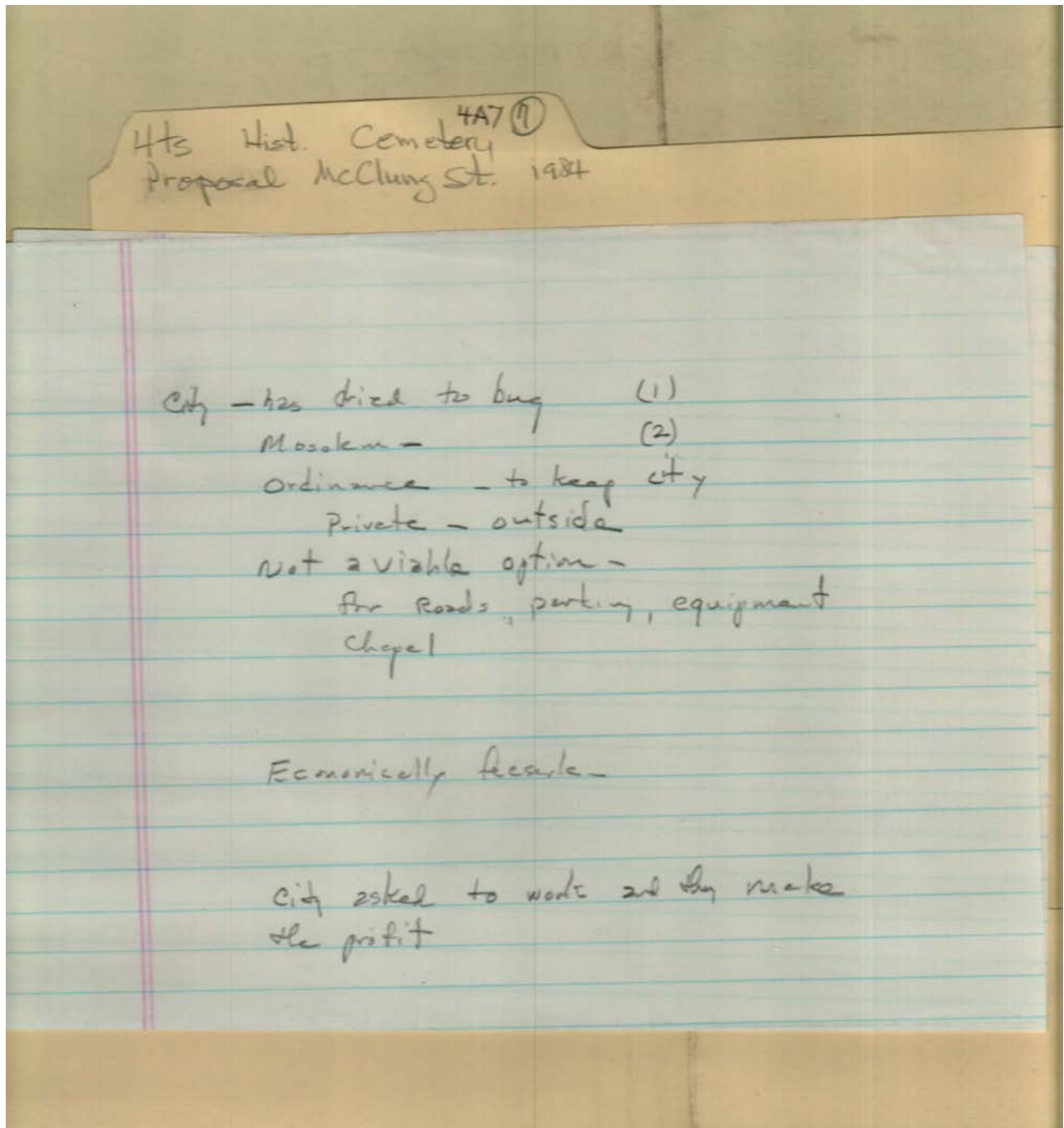
memo



tomb stone

Names:

Balisok, Jerry Bibb



Names:

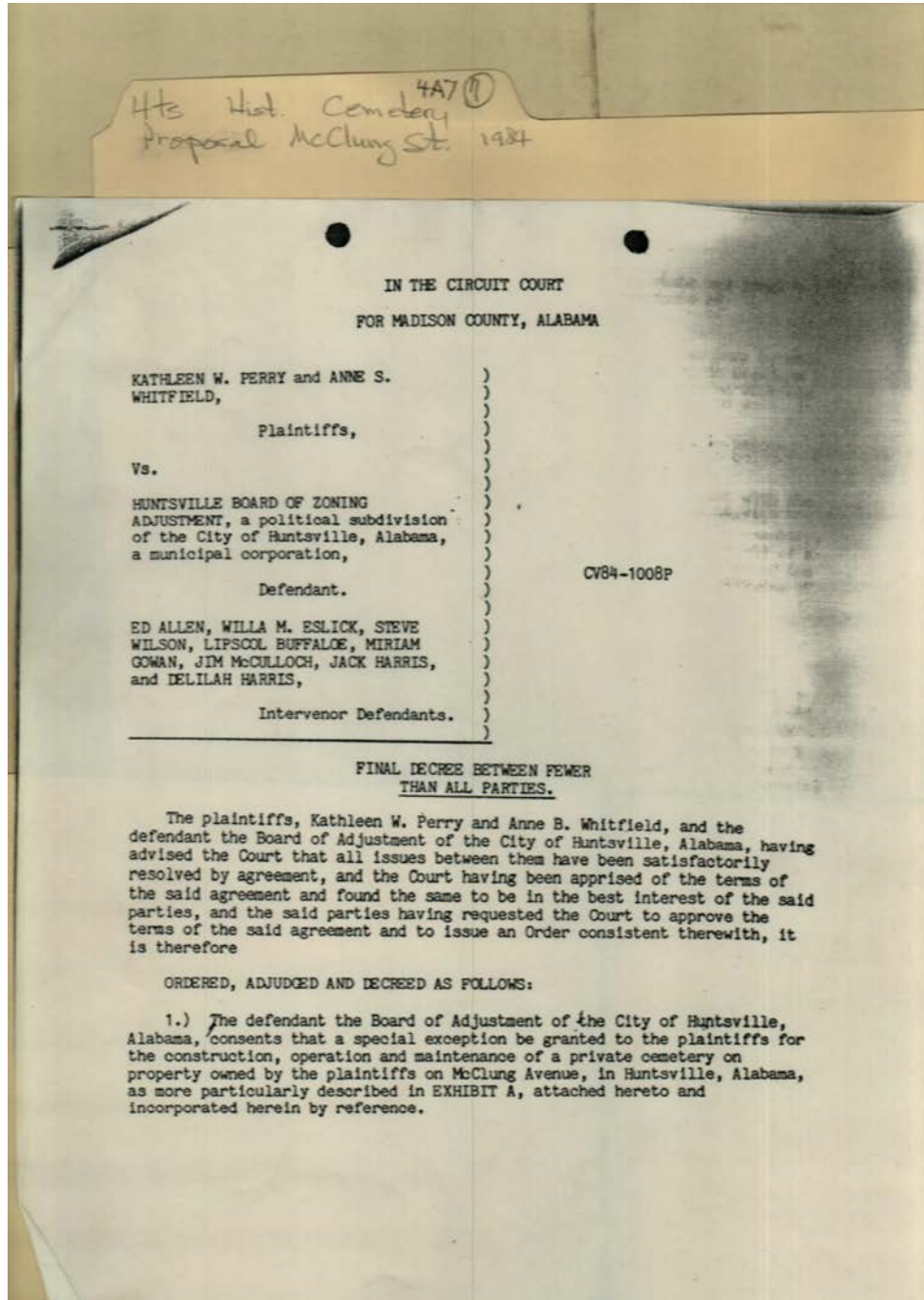
cemetery

Places:

Huntsville, AL

Types:

notes



Names:

Allen, Ed
Buffaloe, Lipscol
Eslick, Willa M.

Gowan, Miriam
Harris, Delilah
Harris, Jack

Huntsville Board of
Zoning Adjustment
McCullough, Jim

Perry, Kathleen W.
Whitfield, Anne S.
Wilson, Steve

Places:

Madison Co., AL

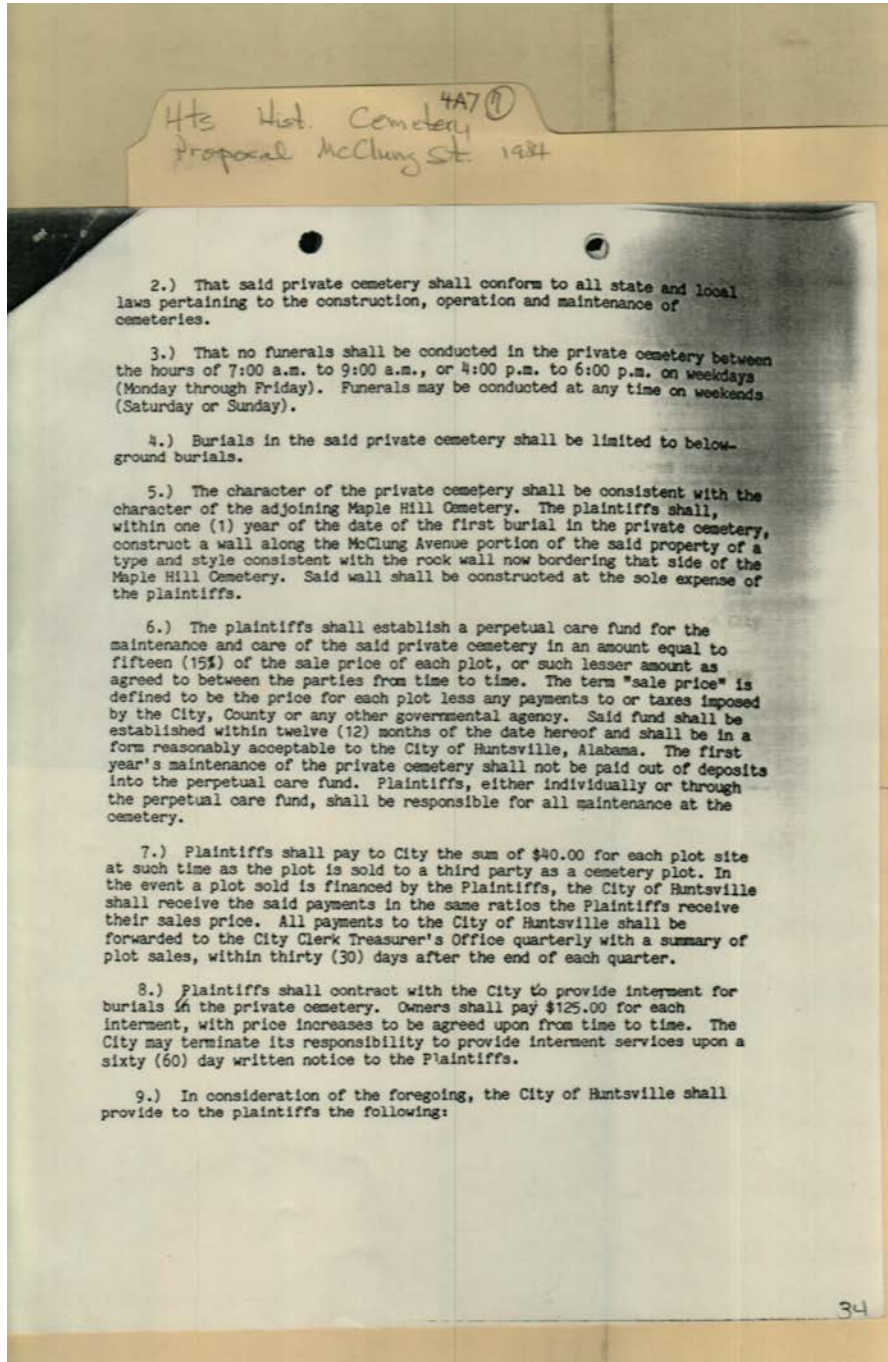
Types:

circuit court

Dates:

Sept 1986

Frances Cabaniss Roberts Collection: Series 4, Subseries A, Box 7, Folder 7
Cemetery Proposal, McClung St./Maple Hill Cemetery, 1984
Image 12 r04a07-07-000-0066 [Contents](#) [Index](#) [About](#)



Names:

Huntsville, City of
Maple Hill Cemetery

McClung Avenue
cemetery

Places:

Madison Co., AL

Types:

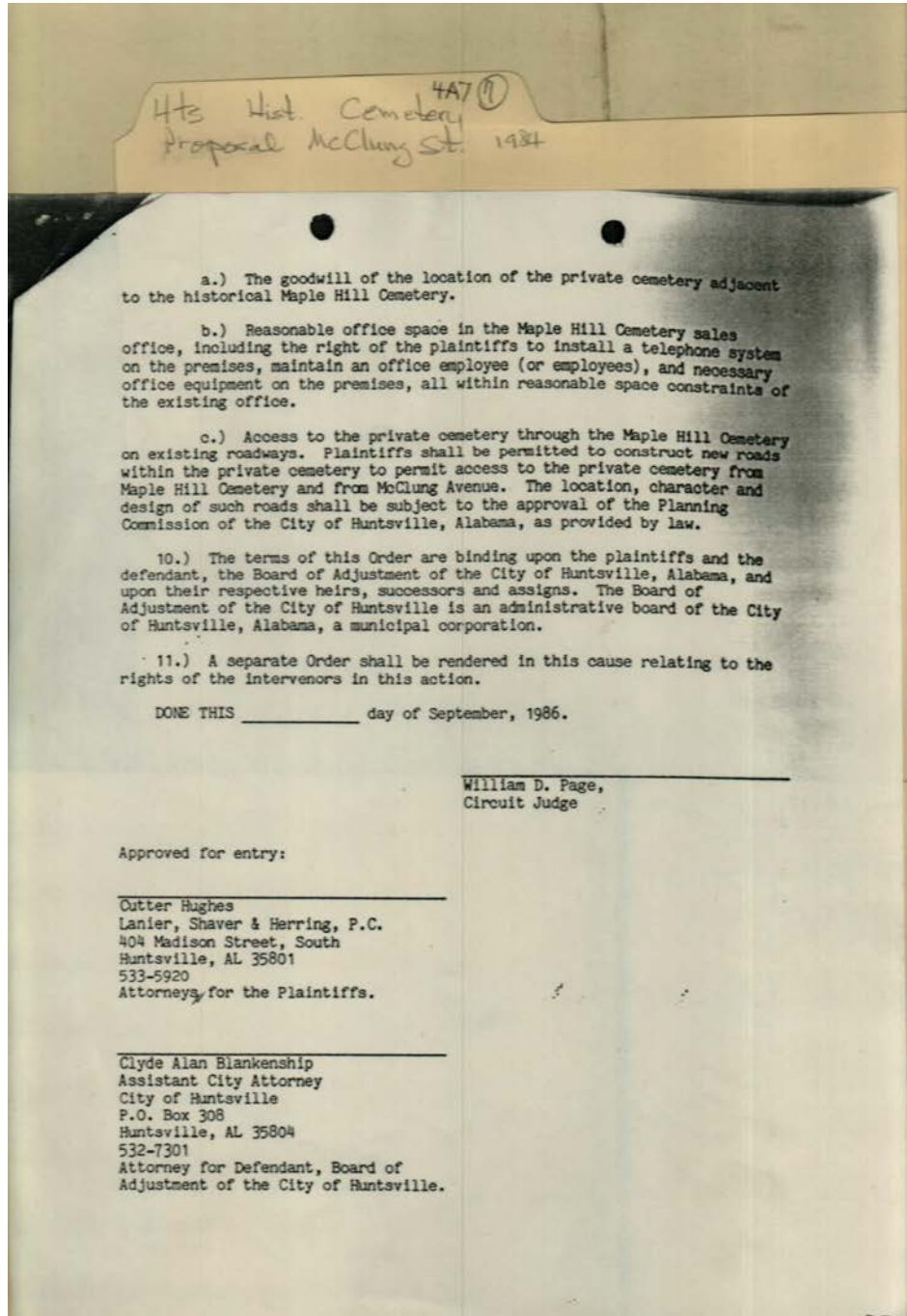
circuit court

Dates:

Sept 1986

Frances Cabaniss Roberts Collection: Series 4, Subseries A, Box 7, Folder 7
Cemetery Proposal, McClung St./Maple Hill Cemetery, 1984

Image 13 r04a07-07-000-0067 [Contents](#) [Index](#) [About](#)



Names:

Blankenship, Clyde
Alan
Hughes, Cutter

Huntsville Board of
Zoning Adjustment

Lanier, Shaver &
Herring
Maple Hill Cemetery

Page, William D.,
Judge

Places:

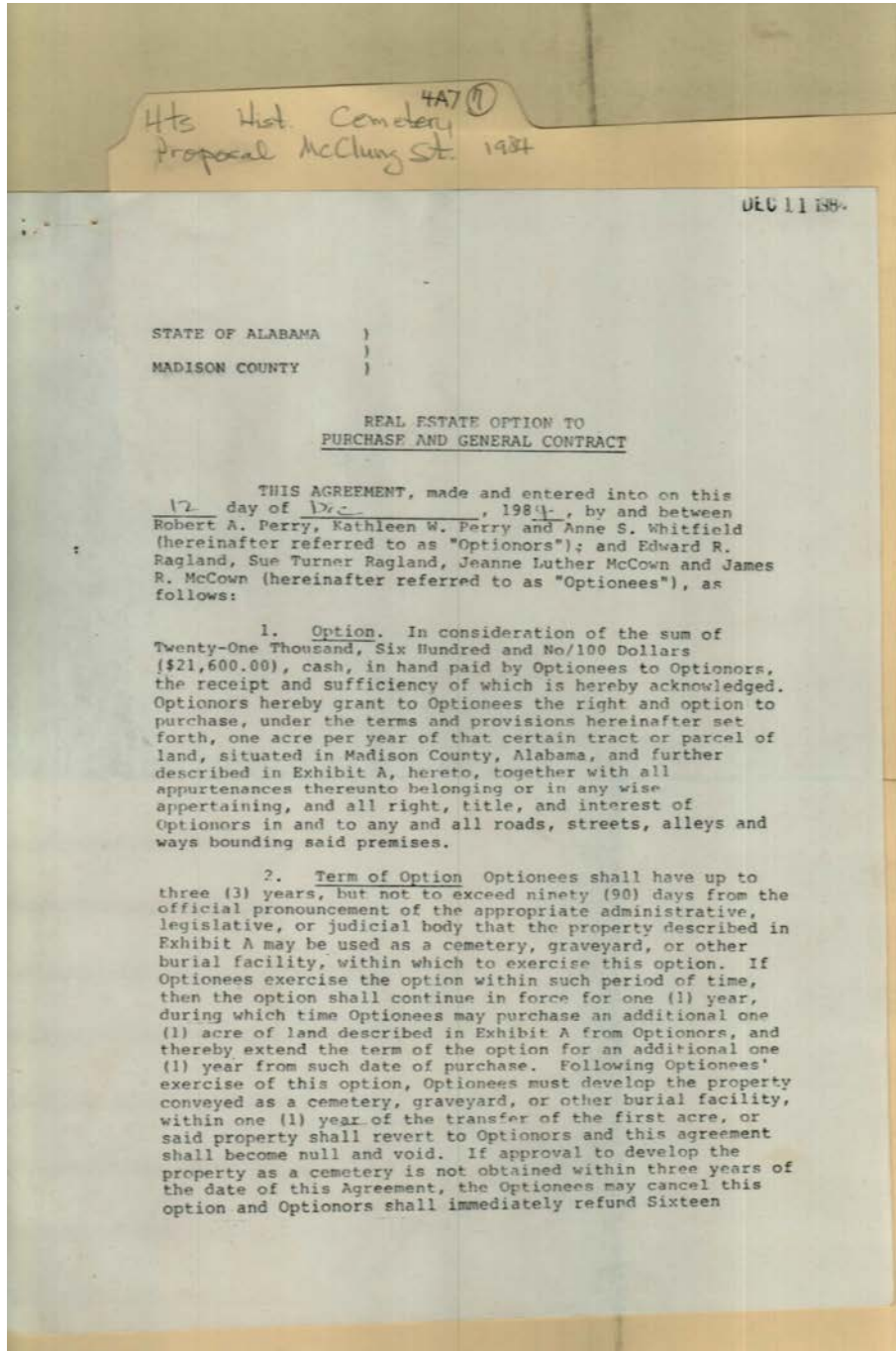
Madison Co., AL

Types:

circuit court

Dates:

Sept 1986



Names:

McCown, James R.
McCown, Jeanne
Luther

Perry, Kathleen W.
Perry, Robert A.
Ragland, Edward R.

Ragland, Sue Turner
Whitfield, Anne S.

Places:

Madison Co., AL

Types:

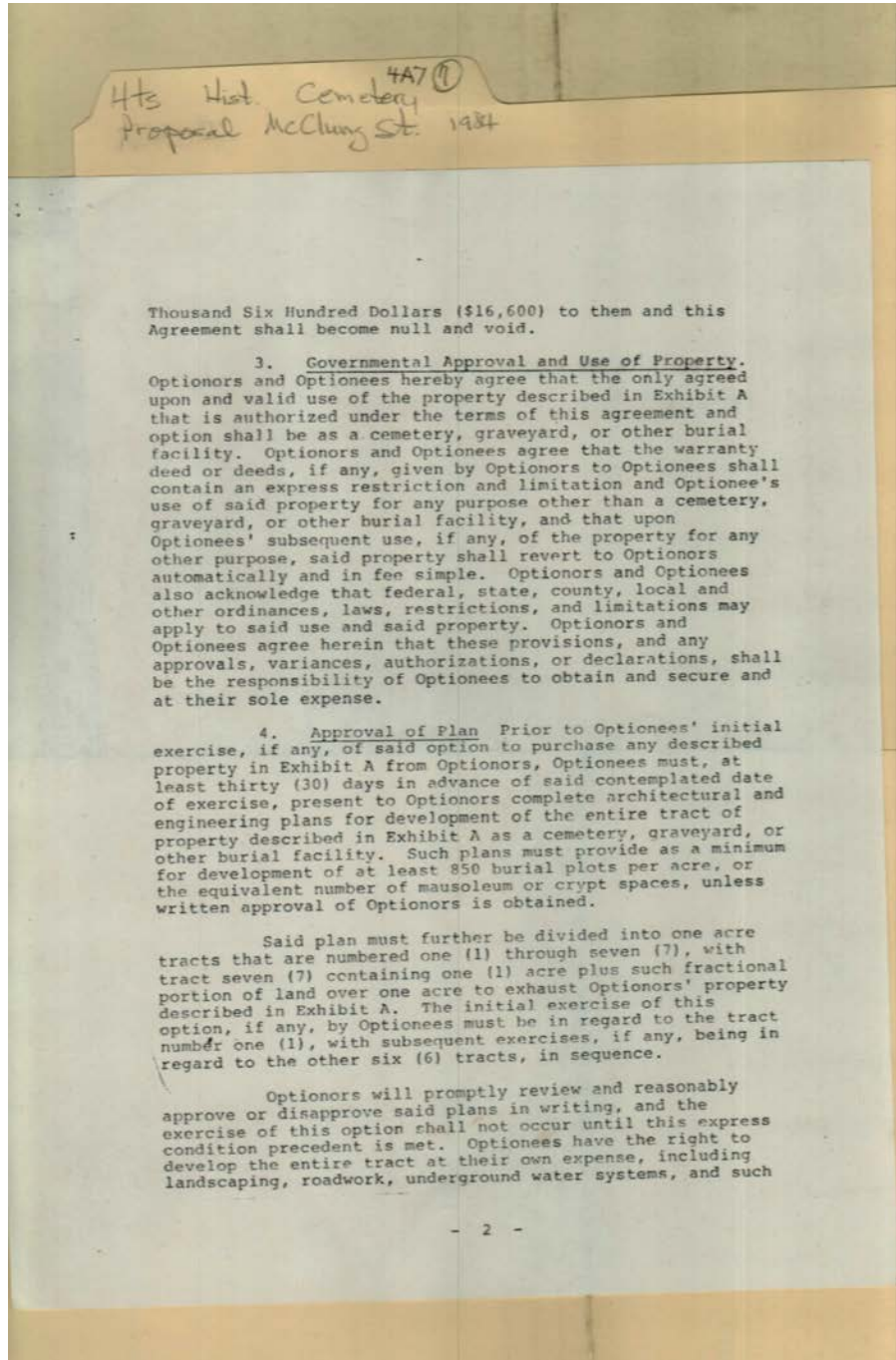
agreement

Dates:

Dec 12, 1984

Frances Cabaniss Roberts Collection: Series 4, Subseries A, Box 7, Folder 7
Cemetery Proposal, McClung St./Maple Hill Cemetery, 1984

Image 15 r04a07-07-000-0069 [Contents](#) [Index](#) [About](#)



Names:

cemetery

Places:

Madison Co., AL

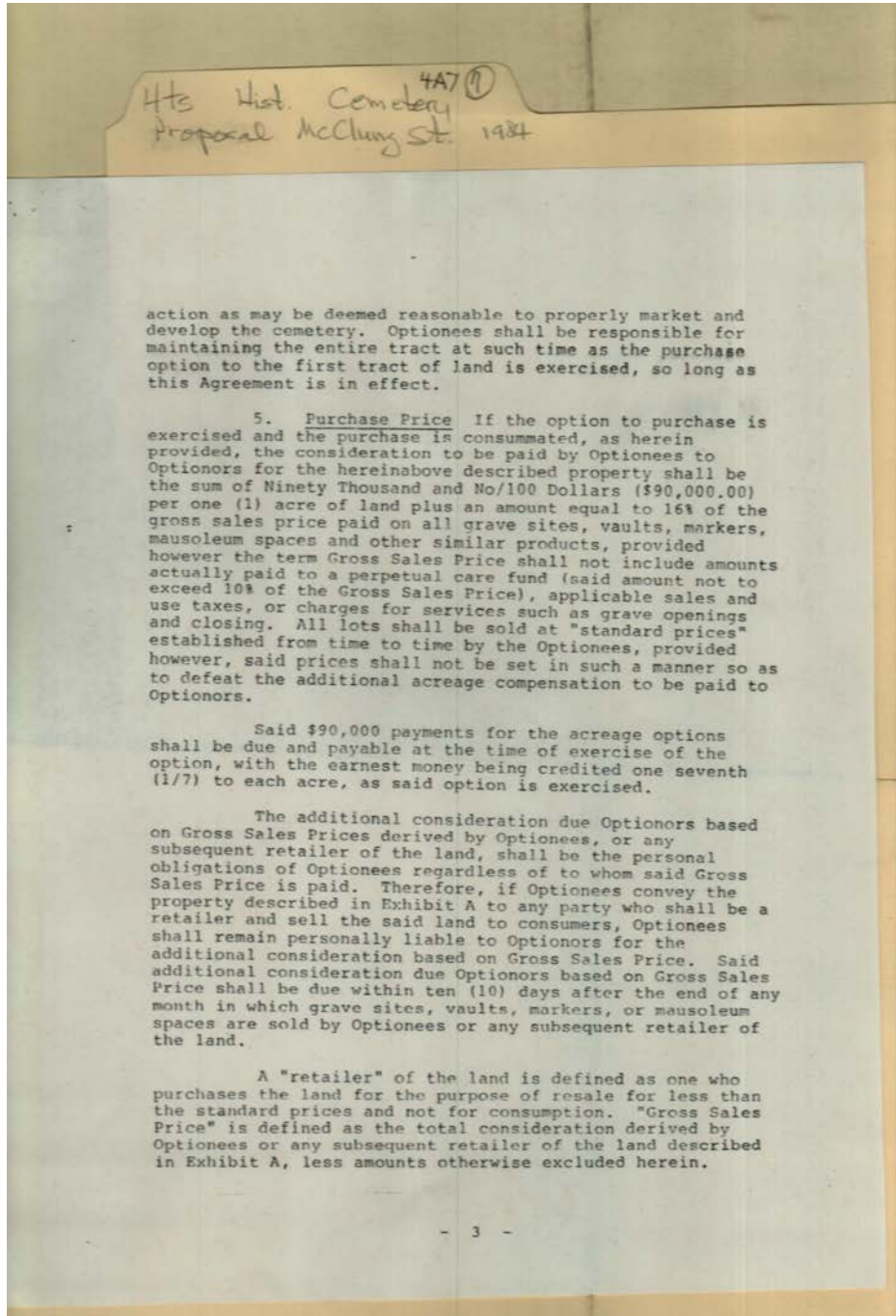
Types:

agreement

Dates:

Dec 12, 1984

Frances Cabaniss Roberts Collection: Series 4, Subseries A, Box 7, Folder 7
Cemetery Proposal, McClung St./Maple Hill Cemetery, 1984
Image 16 r04a07-07-000-0070 [Contents](#) [Index](#) [About](#)



Names:

cemetery

Places:

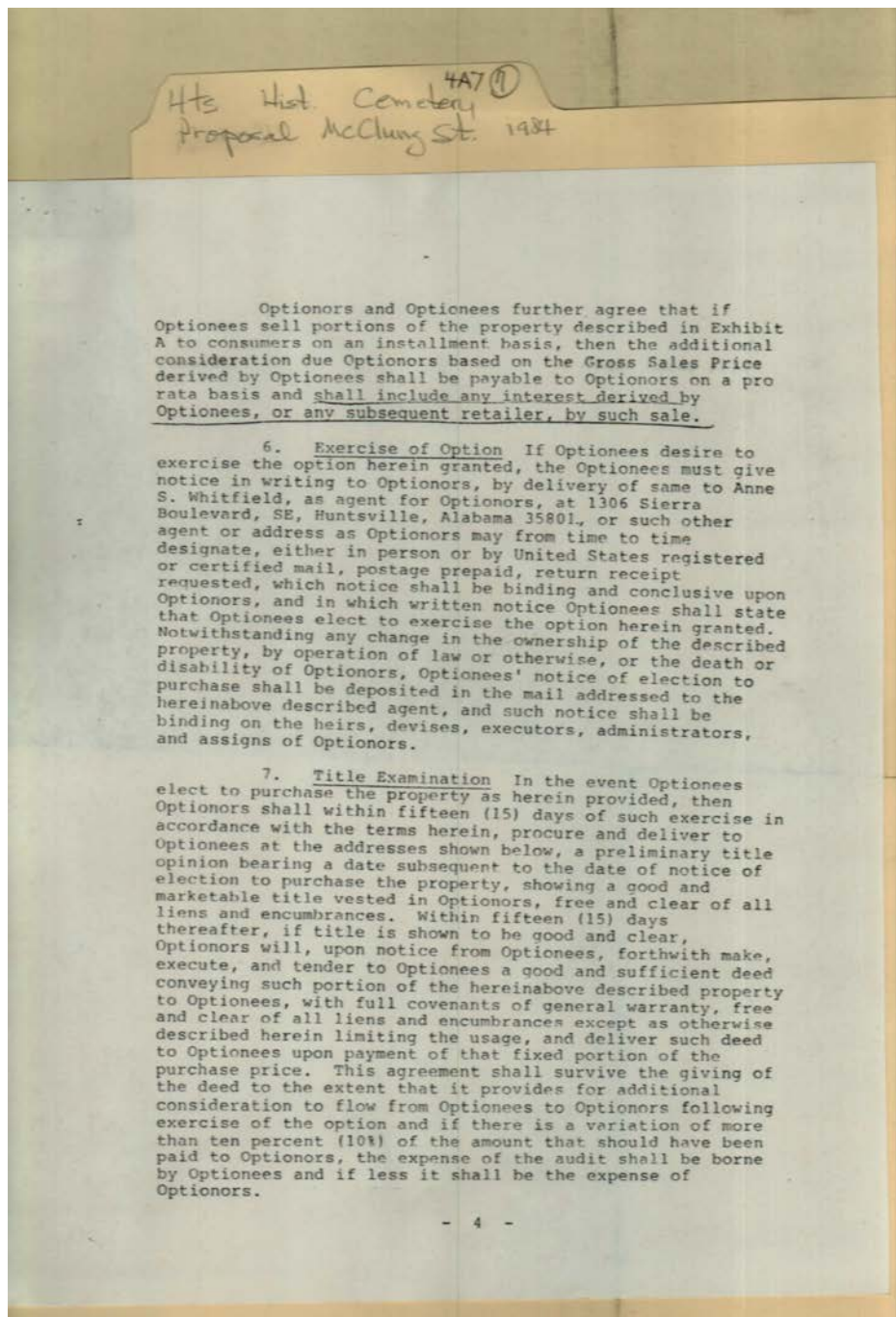
Madison Co., AL

Types:

agreement

Dates:

Dec 12, 1984



Names:

Whitfield, Anne S.

Places:

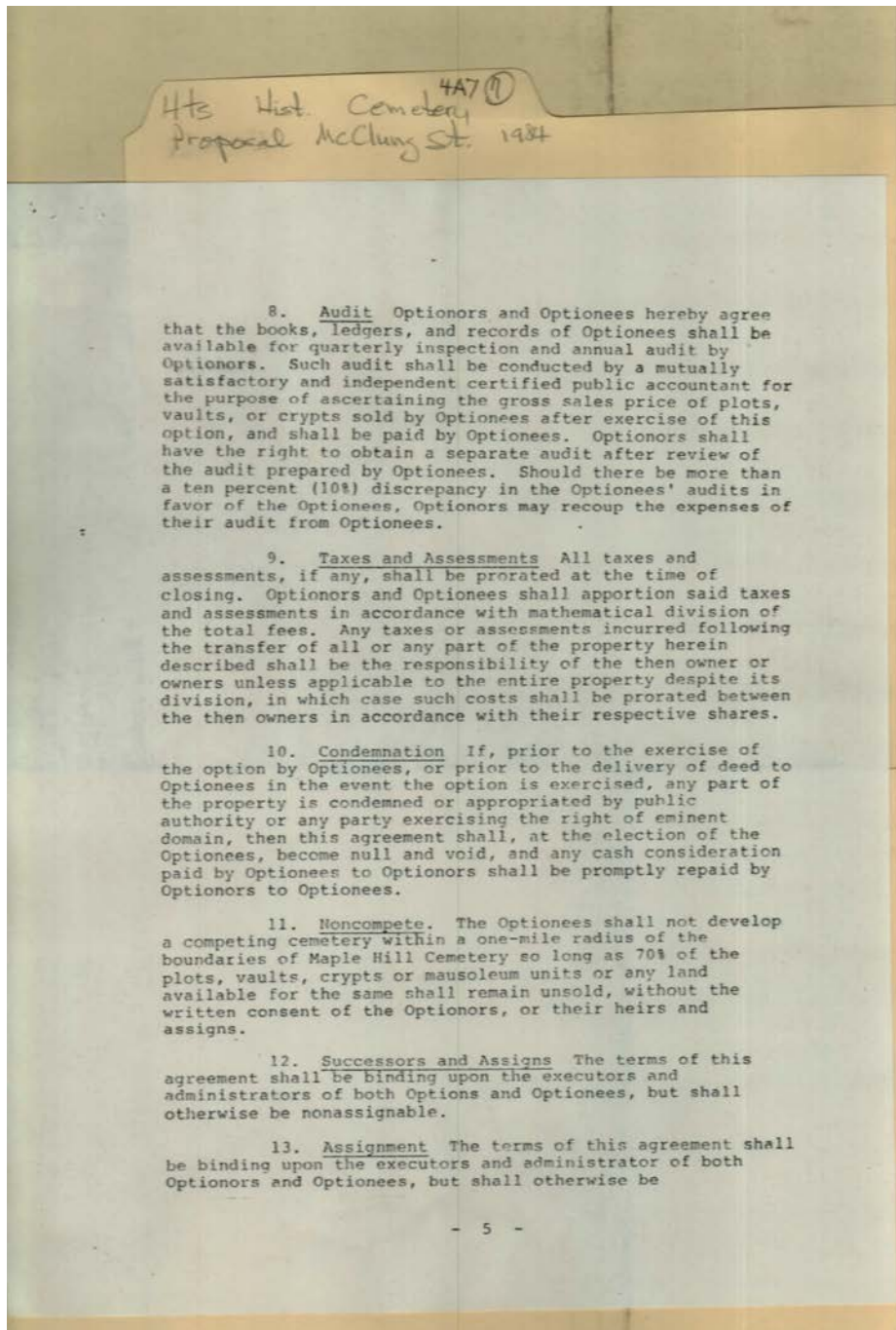
Madison Co., AL

Types:

agreement

Dates:

Dec 12, 1984



Names:

Maple Hill Cemetery

Places:

Madison Co., AL

Types:

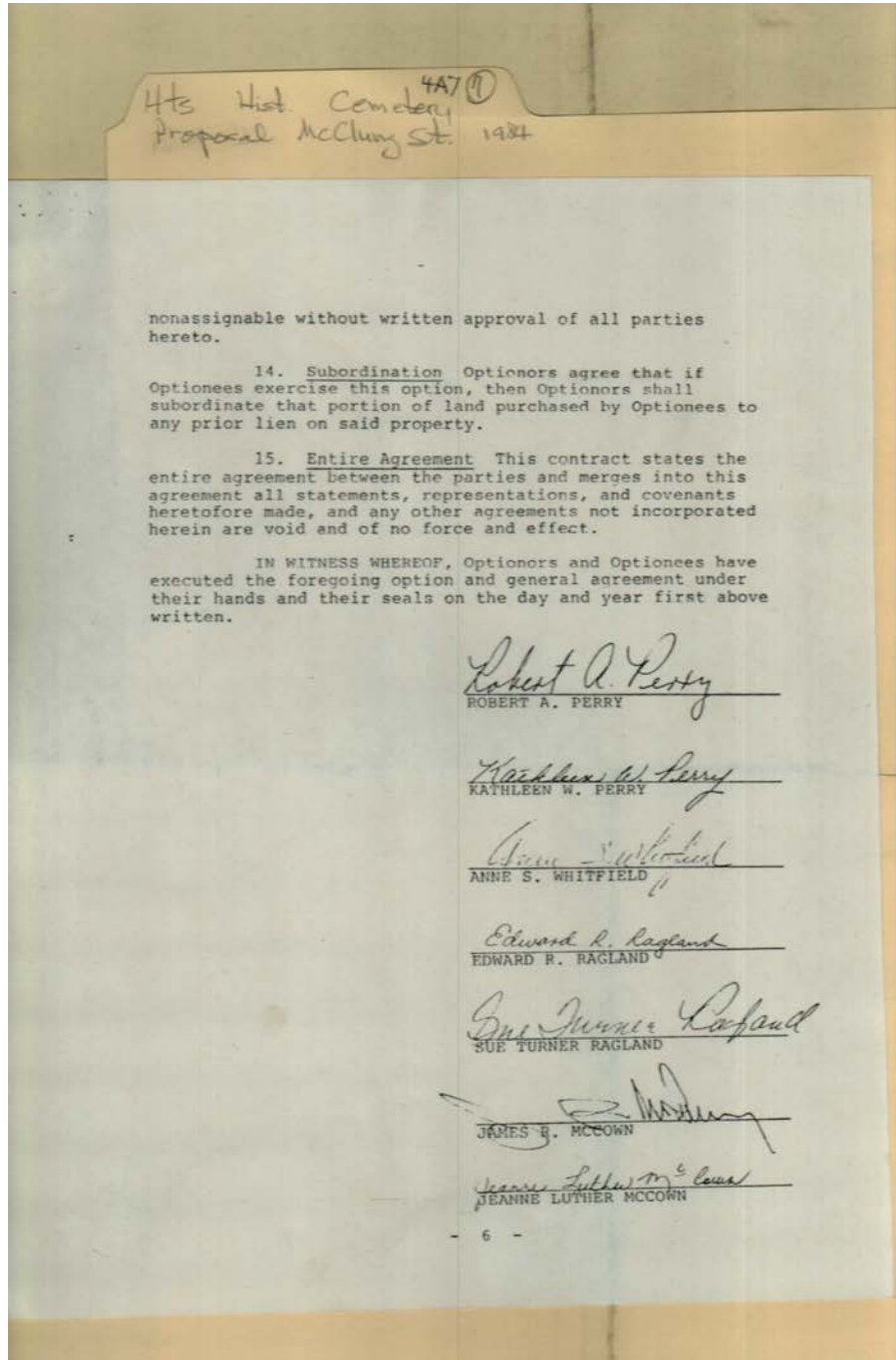
agreement

Dates:

Dec 12, 1984

Frances Cabaniss Roberts Collection: Series 4, Subseries A, Box 7, Folder 7
Cemetery Proposal, McClung St./Maple Hill Cemetery, 1984

Image 19 r04a07-07-000-0073 [Contents](#) [Index](#) [About](#)



Names:

McCown, James R.
McCown, Jeanne
Luther

Perry, Kathleen W.
Perry, Robert A.
Ragland, Edward R.

Ragland, Sue Turner
Whitfield, Anne S.

Places:

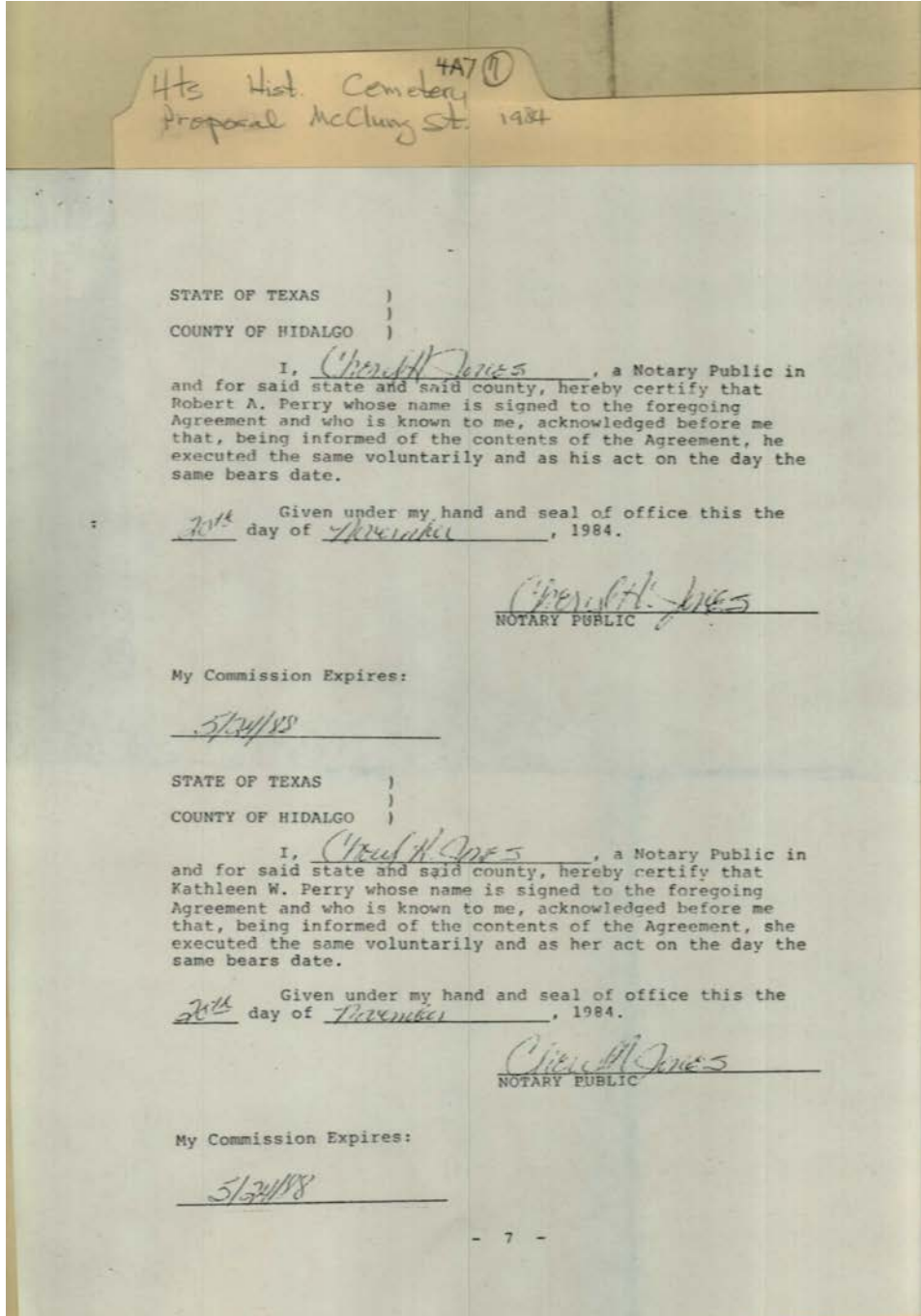
Madison Co., AL

Types:

agreement

Dates:

Dec 12, 1984



Names:

Perry, Kathleen W.

Perry, Robert A.

Places:

Hidalgo Co., TX

Types:

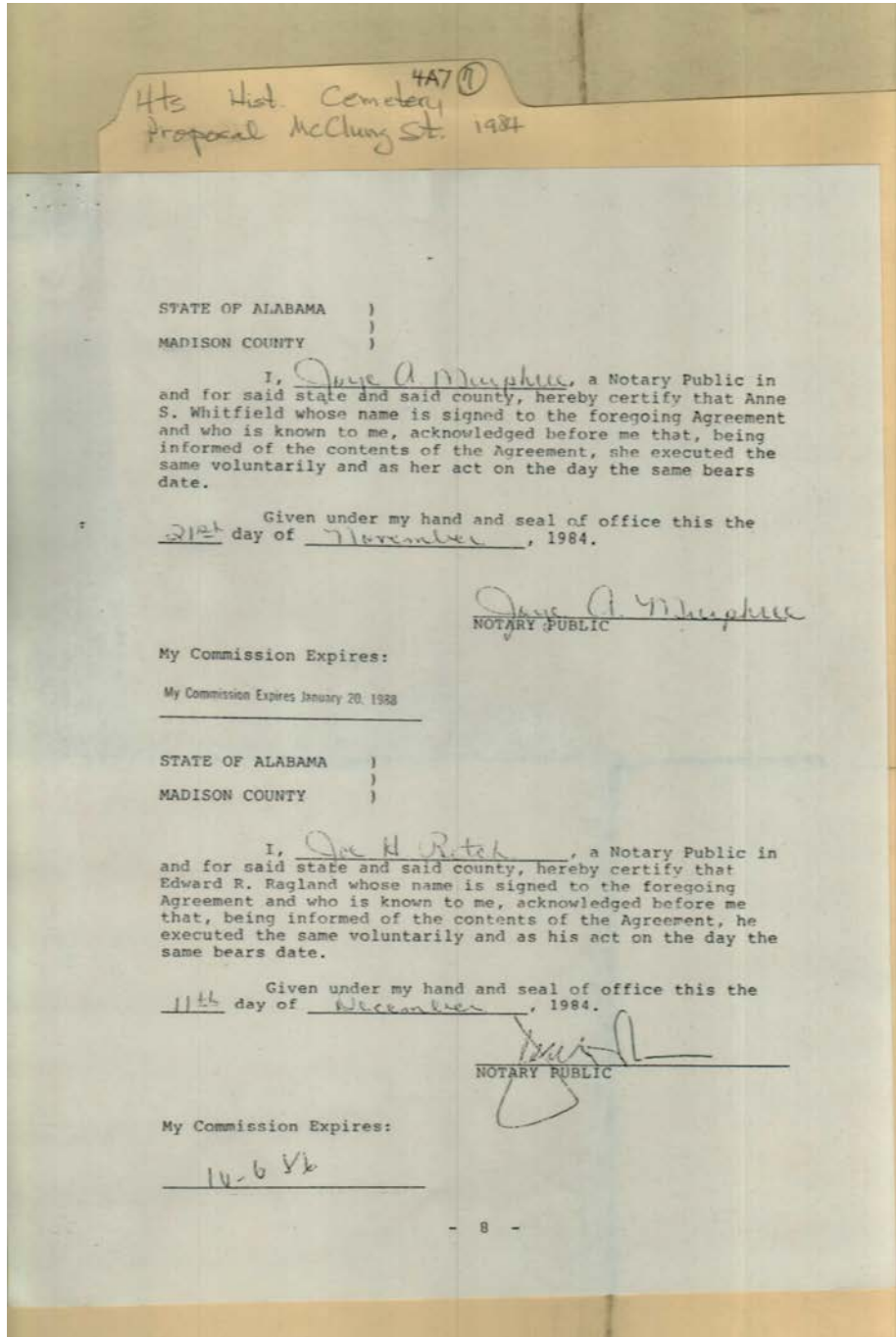
agreement

Dates:

Nov 20, 1984

Frances Cabaniss Roberts Collection: Series 4, Subseries A, Box 7, Folder 7
Cemetery Proposal, McClung St./Maple Hill Cemetery, 1984

Image 21 r04a07-07-000-0075 [Contents](#) [Index](#) [About](#)



Names:

Ragland, Edward R.

Whitfield, Anne S.

Places:

Madison Co., AL

Types:

agreement

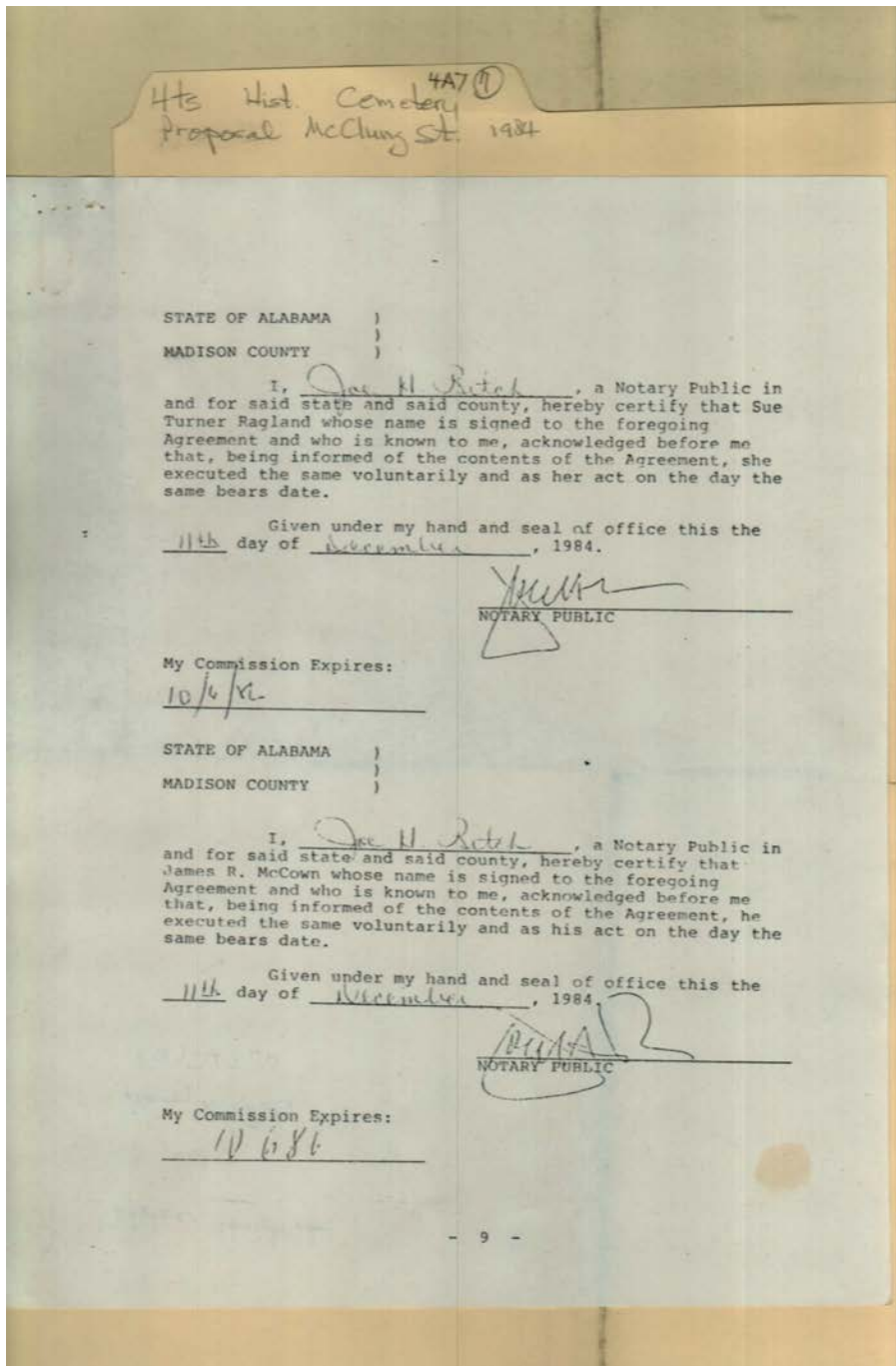
Dates:

Nov 11, 1984

Nov 21, 1984

Frances Cabaniss Roberts Collection: Series 4, Subseries A, Box 7, Folder 7
Cemetery Proposal, McClung St./Maple Hill Cemetery, 1984

Image 22 r04a07-07-000-0076 [Contents](#) [Index](#) [About](#)



Names:

McCown, James R.

Ragland, Sue Turner

Places:

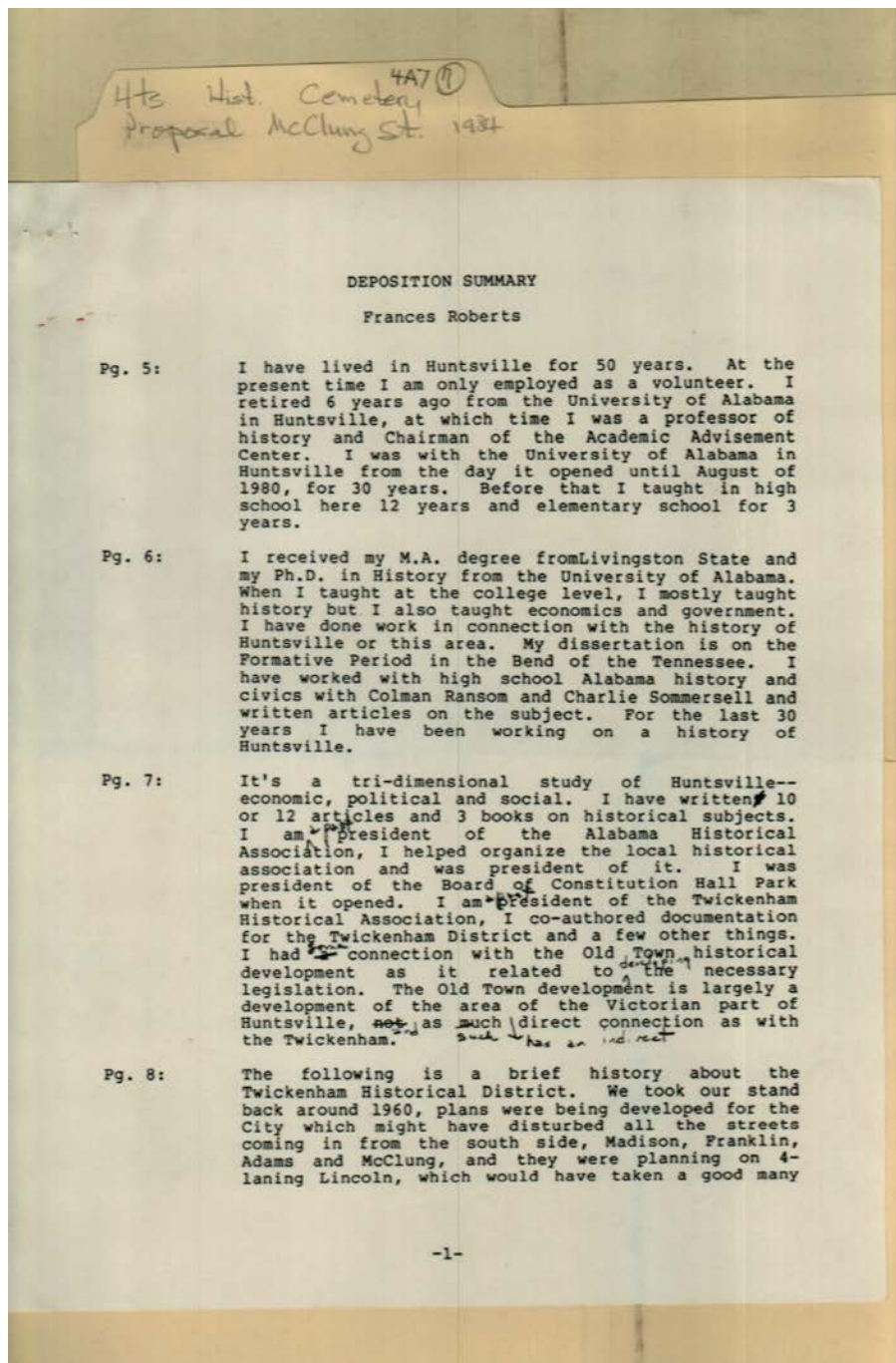
Madison Co., AL

Types:

agreement

Dates:

Nov 11, 1984



Hts Hist. Cemetery 4A7 (1)
Proposal McClung St. 1984

DEPOSITION SUMMARY

Frances Roberts

Pg. 5: I have lived in Huntsville for 50 years. At the present time I am only employed as a volunteer. I retired 6 years ago from the University of Alabama in Huntsville, at which time I was a professor of history and Chairman of the Academic Advisement Center. I was with the University of Alabama in Huntsville from the day it opened until August of 1980, for 30 years. Before that I taught in high school here 12 years and elementary school for 3 years.

Pg. 6: I received my M.A. degree from Livingston State and my Ph.D. in History from the University of Alabama. When I taught at the college level, I mostly taught history but I also taught economics and government. I have done work in connection with the history of Huntsville or this area. My dissertation is on the Formative Period in the Bend of the Tennessee. I have worked with high school Alabama history and civics with Colman Ransom and Charlie Sommersell and written articles on the subject. For the last 30 years I have been working on a history of Huntsville.

Pg. 7: It's a tri-dimensional study of Huntsville-- economic, political and social. I have written 10 or 12 articles and 3 books on historical subjects. I am president of the Alabama Historical Association, I helped organize the local historical association and was president of it. I was president of the Board of Constitution Hall Park when it opened. I am president of the Twickenham Historical Association, I co-authored documentation for the Twickenham District and a few other things. I had connection with the Old Town historical development as it related to the necessary legislation. The Old Town development is largely a development of the area of the Victorian part of Huntsville, not as much direct connection as with the Twickenham. *Such has an indirect*

Pg. 8: The following is a brief history about the Twickenham Historical District. We took our stand back around 1960, plans were being developed for the City which might have disturbed all the streets coming in from the south side, Madison, Franklin, Adams and McClung, and they were planning on 4-laning Lincoln, which would have taken a good many

Names:

Ransom, Colman
Roberts, Frances

Sommersell, Charlie

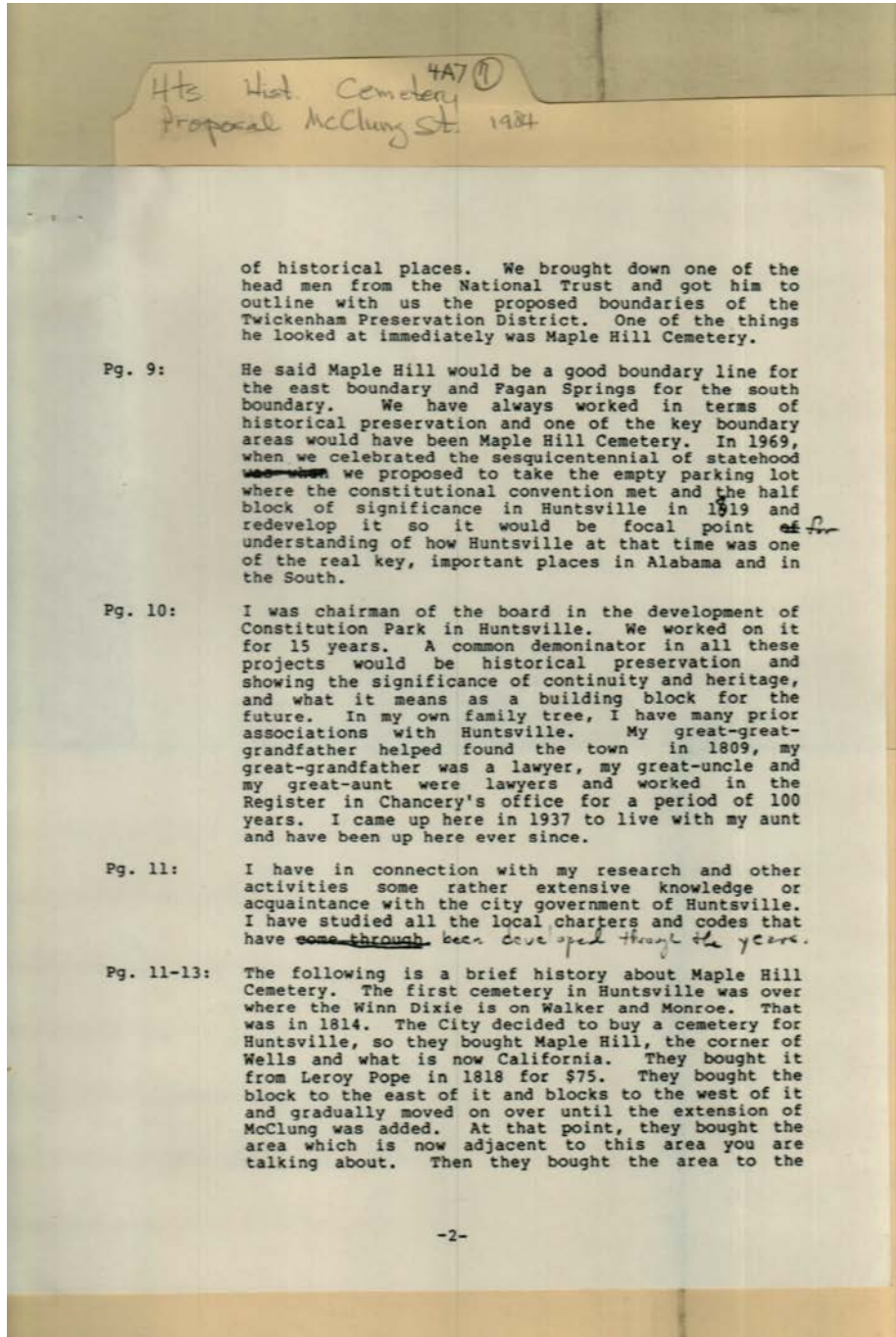
Twickenham
Historical District

Places:

Huntsville, AL

Types:

deposition



Names:

Constitution Park
Maple Hill Cemetery

Pope, LeRoy

Twickenham
Preservation

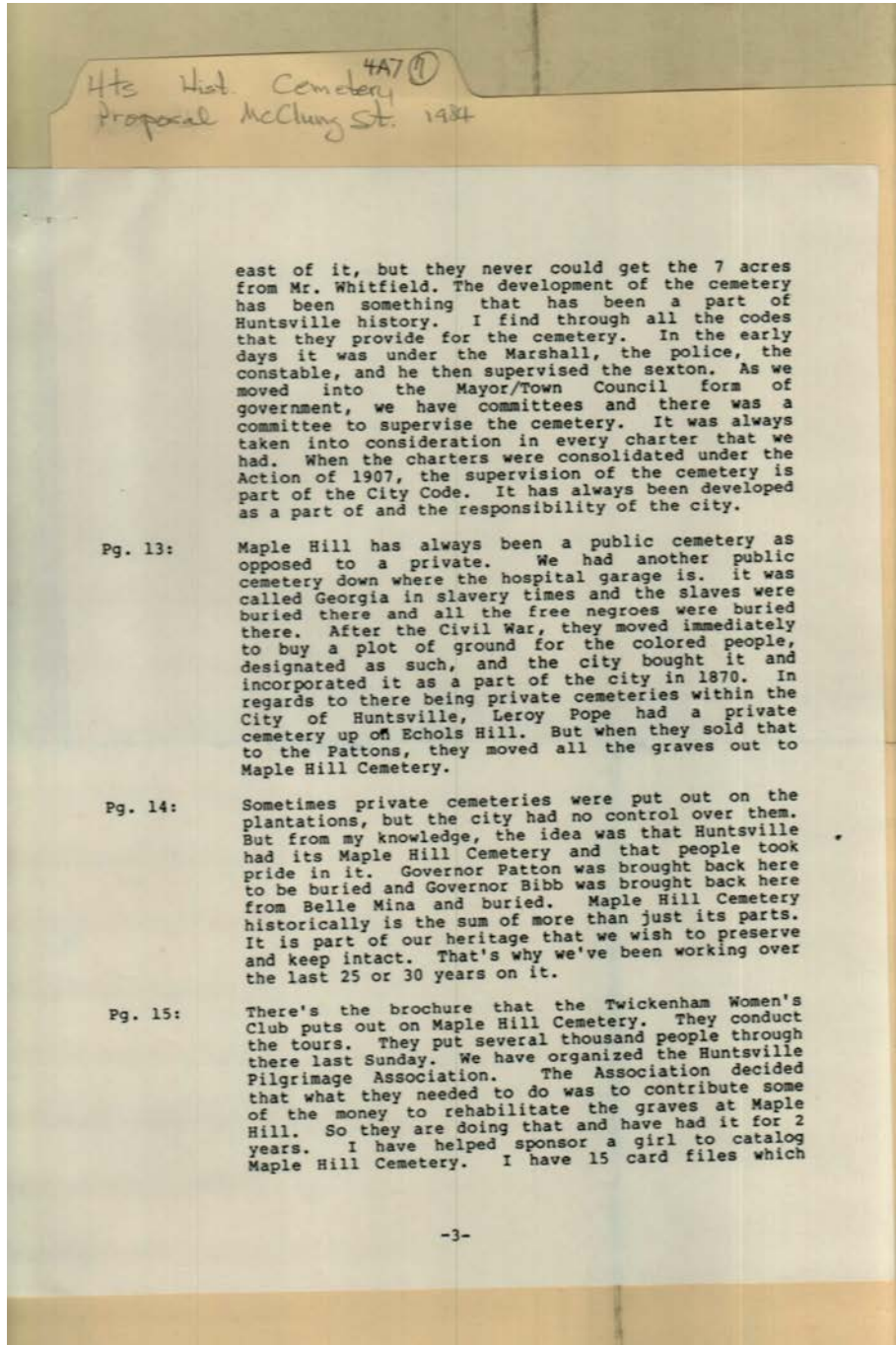
District

Places:

Huntsville, AL

Types:

deposition



Names:

Bibb, Governor
Georgia Cemetery

Huntsville Pilgrimage
Association
Maple Hill Cemetery

Patton, Governor
Pope, LeRoy

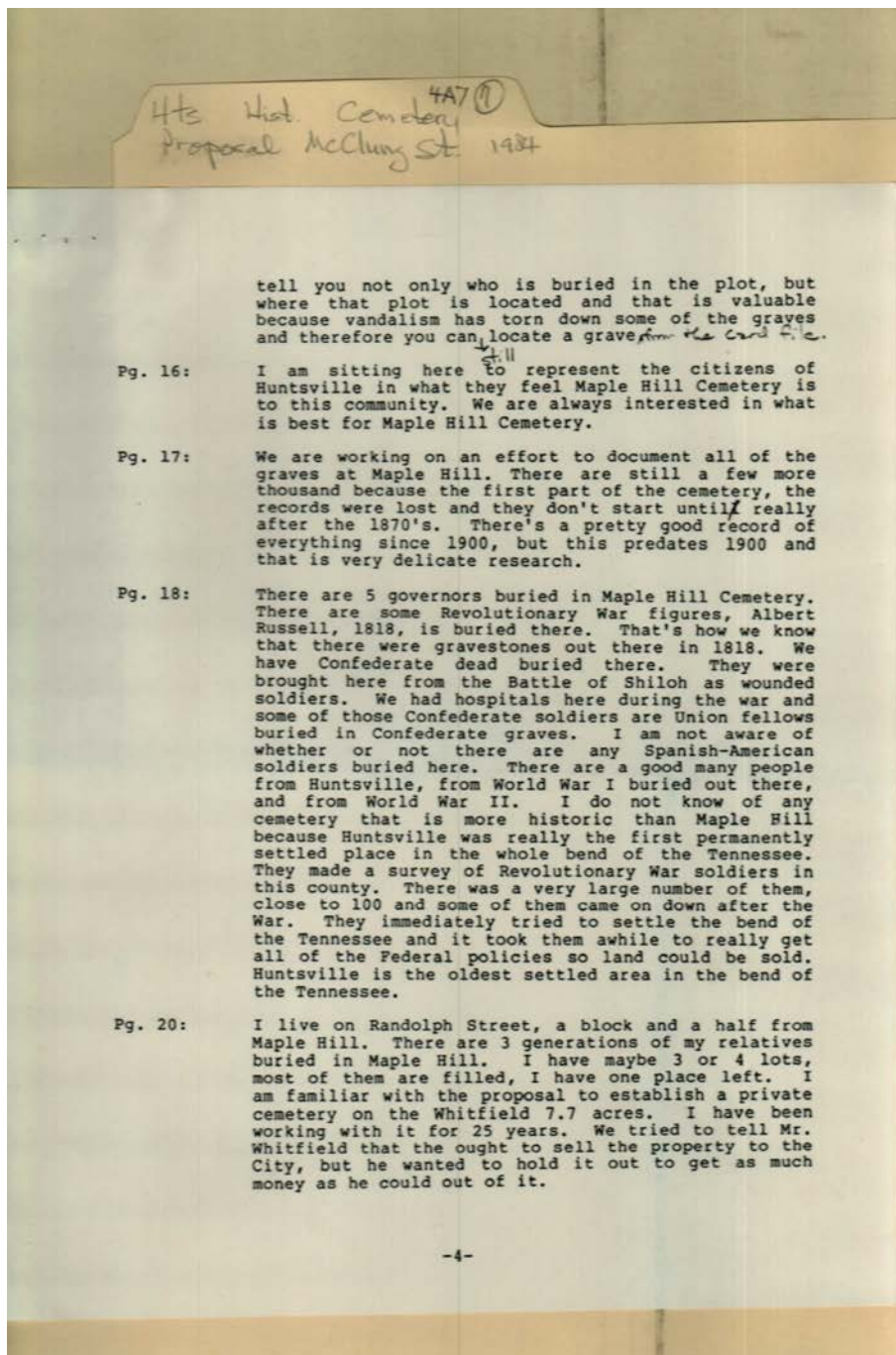
Twickenham
Woman's Club
Whitfield,

Places:

Huntsville, AL

Types:

deposition



Names:

Maple Hill Cemetery

Russel, Albert

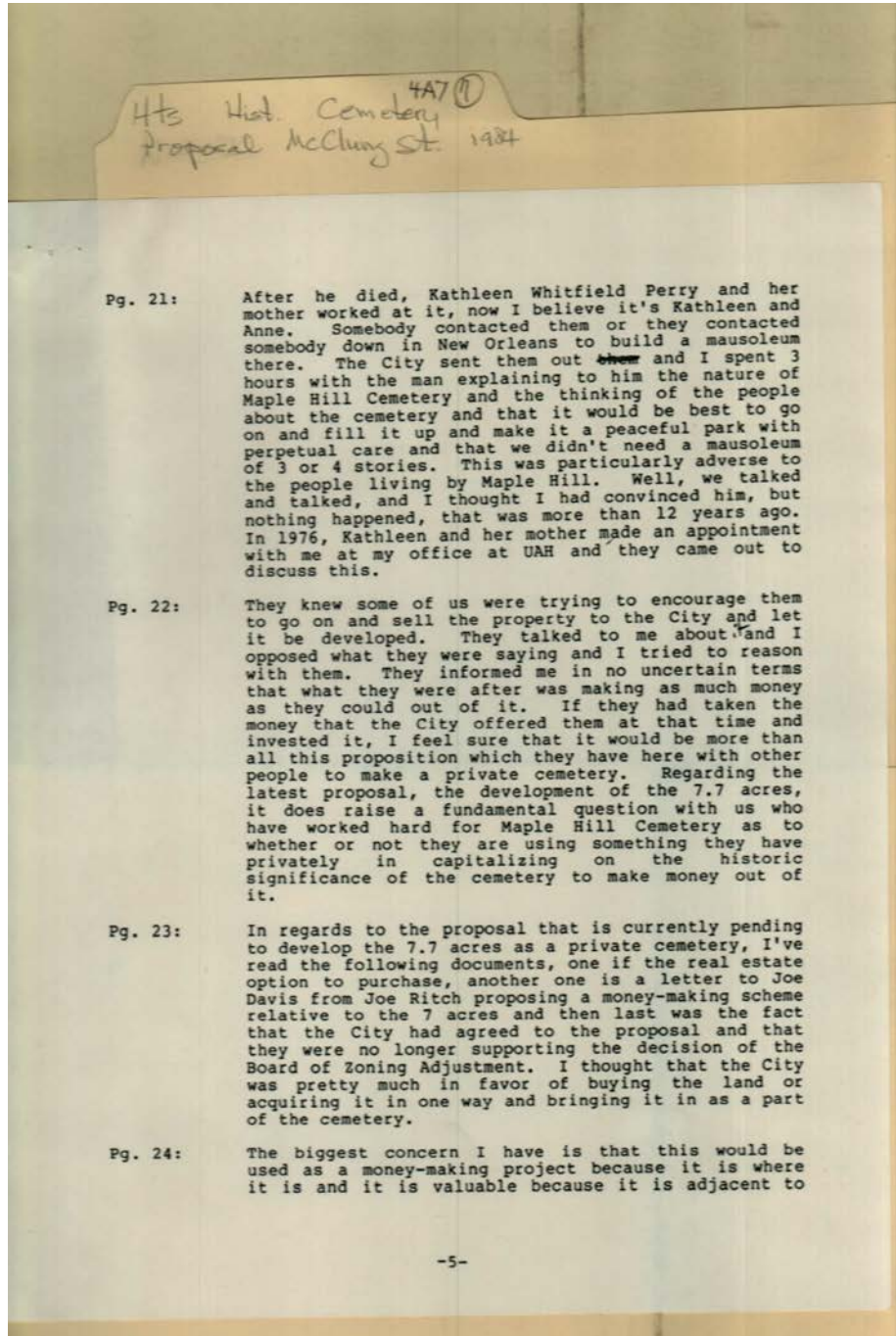
Whitfield,

Places:

Huntsville, AL

Types:

deposition



Names:

Davis, Joe W., Mayor
Maple Hill Cemetery

Perry, Kathleen
Whitfield

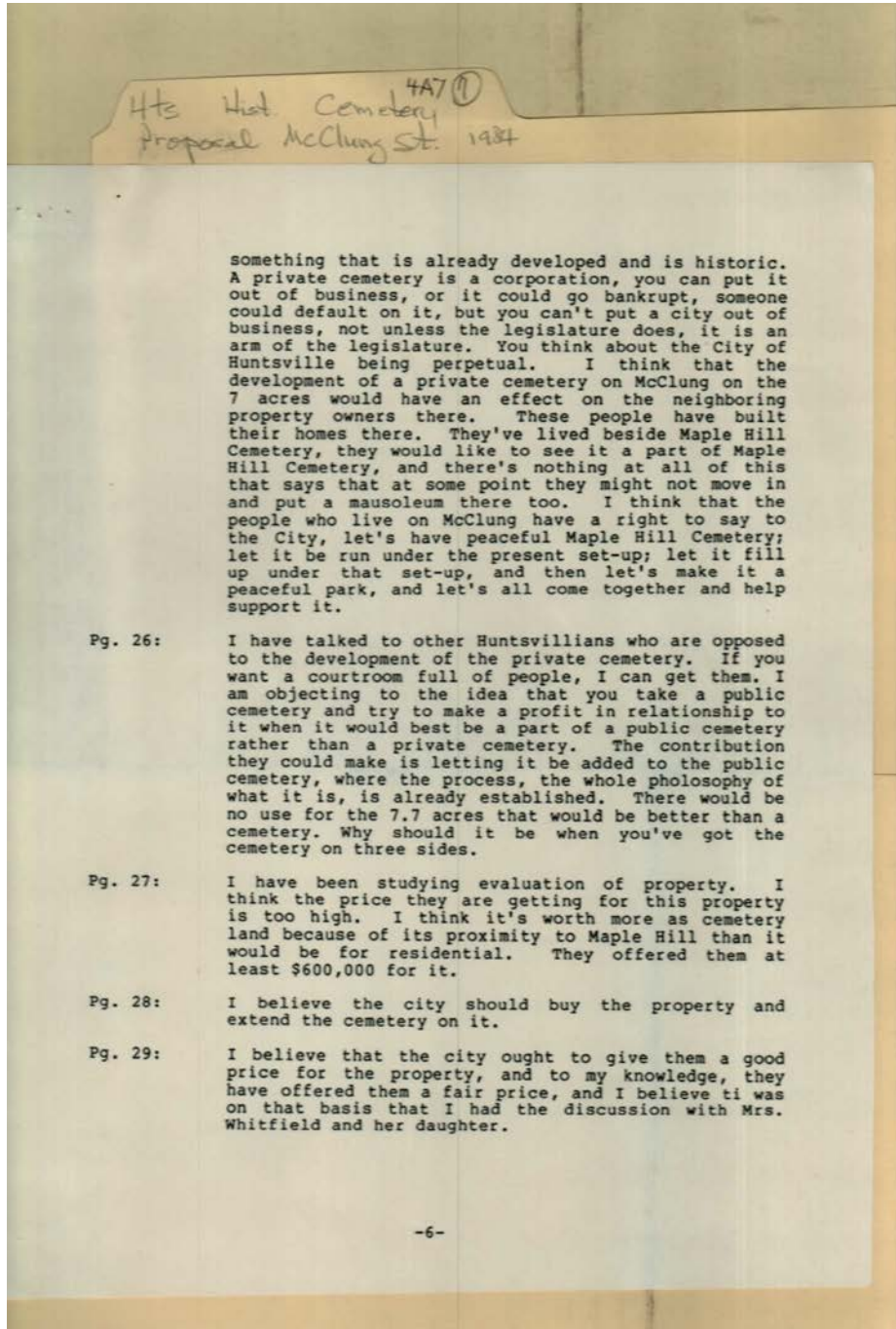
Whitfield, Anne

Places:

Huntsville, AL

Types:

deposition



Names:

Maple Hill Cemetery

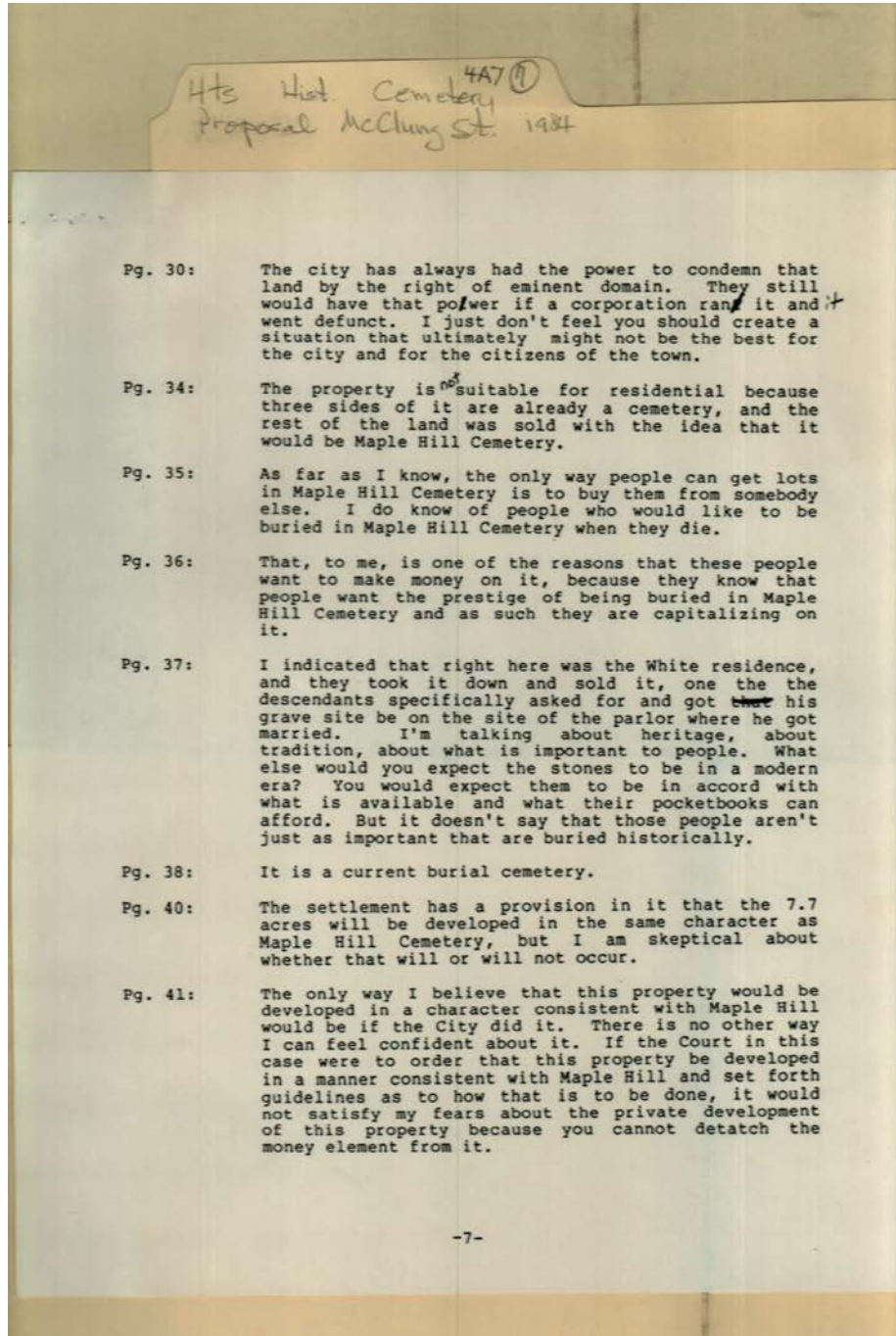
Whitfield, Anne

Places:

Huntsville, AL

Types:

deposition



Names:

Maple Hill Cemetery

Places:

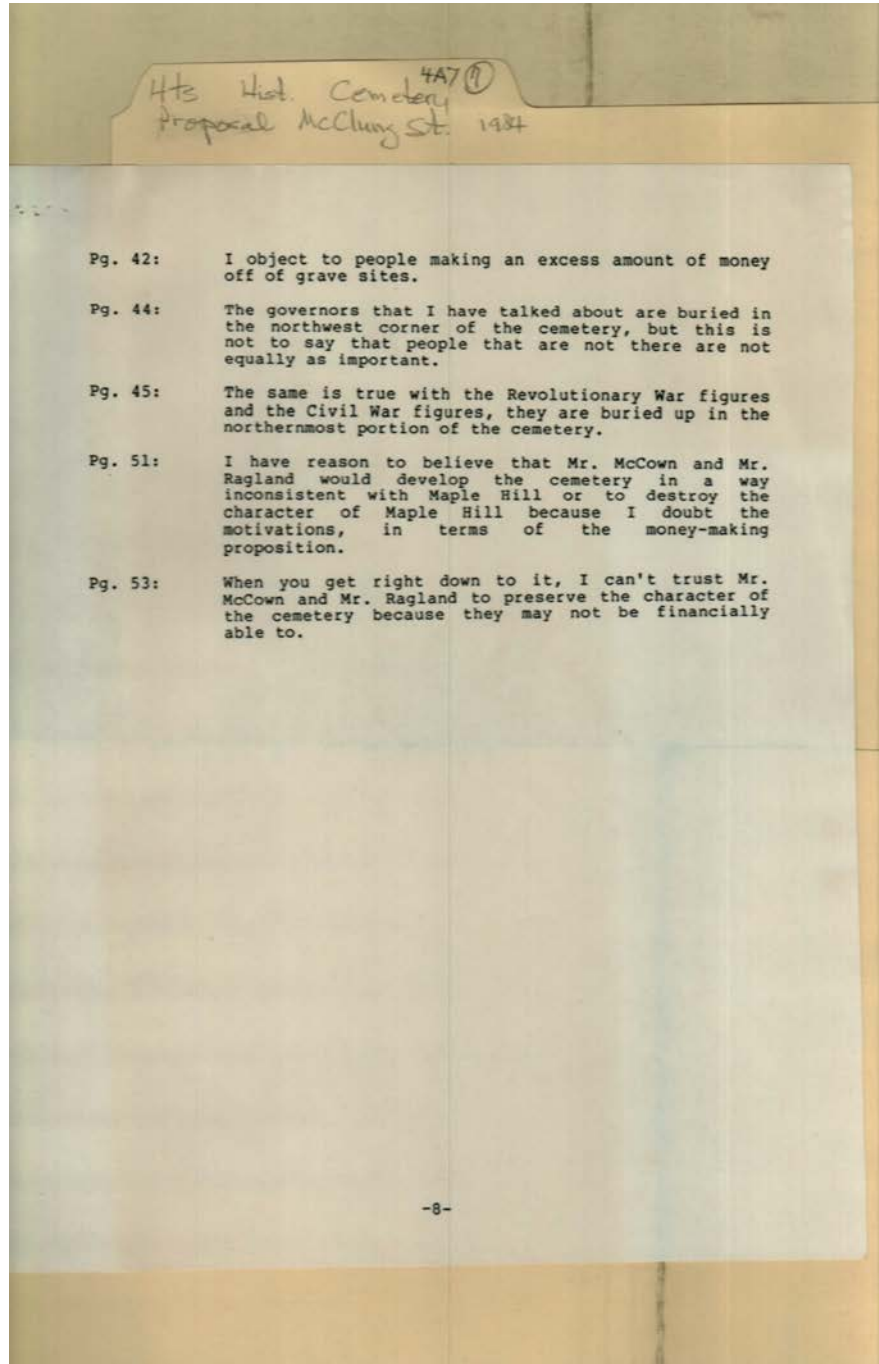
Huntsville, AL

Types:

deposition

Frances Cabaniss Roberts Collection: Series 4, Subseries A, Box 7, Folder 7
Cemetery Proposal, McClung St./Maple Hill Cemetery, 1984

Image 30 r04a07-07-000-0084 [Contents](#) [Index](#) [About](#)



Names:

Maple Hill Cemetery

McCown, James R.

Ragland, Edward R.

Places:

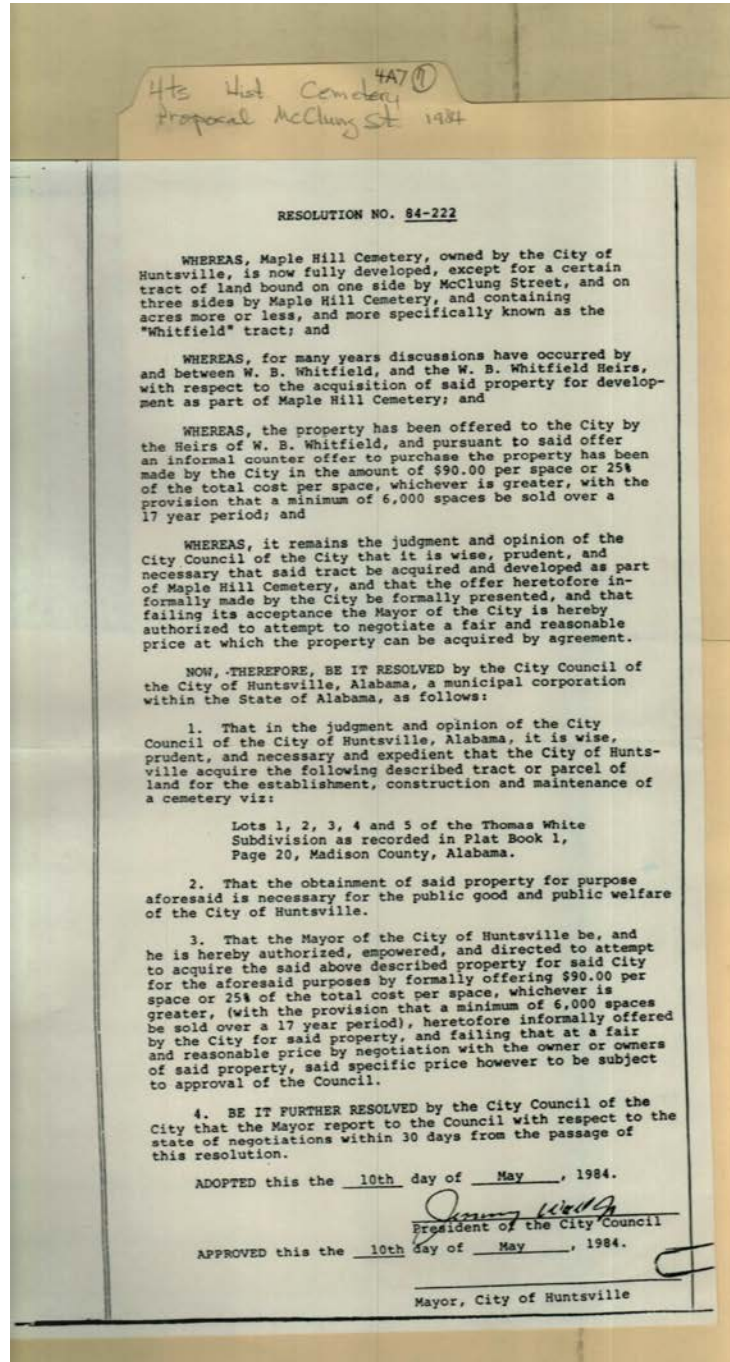
Huntsville, AL

Types:

deposition

Frances Cabaniss Roberts Collection: Series 4, Subseries A, Box 7, Folder 7
Cemetery Proposal, McClung St./Maple Hill Cemetery, 1984

Image 31 r04a07-07-000-0085 [Contents](#) [Index](#) [About](#)



Names:

Maple Hill Cemetery

Thomas White
Subdivision

Wall, Jimmy, Jr.
Whitfield tract

Whitfield, W. B.

Places:

Huntsville, AL

Types:

resolution

Dates:

May 10-, 1984

**Frances Cabaniss Roberts Collection: Series 4, Subseries A, Box 7, Folder 7
Cemetery Proposal, McClung St./Maple Hill Cemetery, 1984**

[Contents](#) [Index](#) [About](#)

Table of Contents

[Image 1](#) (r04a07-07-000-0055)

[Image 2](#) (r04a07-07-000-0056)

[Image 3](#) (r04a07-07-000-0057)

[Image 4](#) (r04a07-07-000-0058)

[Image 5](#) (r04a07-07-000-0059)

[Image 6](#) (r04a07-07-000-0060)

[Image 7](#) (r04a07-07-000-0061)

[Image 8](#) (r04a07-07-000-0062)

[Image 9](#) (r04a07-07-000-0063)

[Image 10](#) (r04a07-07-000-0064)

[Image 11](#) (r04a07-07-000-0065)

[Image 12](#) (r04a07-07-000-0066)

[Image 13](#) (r04a07-07-000-0067)

[Image 14](#) (r04a07-07-000-0068)

[Image 15](#) (r04a07-07-000-0069)

[Image 16](#) (r04a07-07-000-0070)

[Image 17](#) (r04a07-07-000-0071)

[Image 18](#) (r04a07-07-000-0072)

[Image 19](#) (r04a07-07-000-0073)

[Image 20](#) (r04a07-07-000-0074)

[Image 21](#) (r04a07-07-000-0075)

[Image 22](#) (r04a07-07-000-0076)

[Image 23](#) (r04a07-07-000-0077)

[Image 24](#) (r04a07-07-000-0078)

[Image 25](#) (r04a07-07-000-0079)

[Image 26](#) (r04a07-07-000-0080)

[Image 27](#) (r04a07-07-000-0081)

[Image 28](#) (r04a07-07-000-0082)

[Image 29](#) (r04a07-07-000-0083)

[Image 30](#) (r04a07-07-000-0084)

[Image 31](#) (r04a07-07-000-0085)

[Table of Contents](#)

[Name & Place Index](#)

[About the Collection](#)

**Frances Cabaniss Roberts Collection: Series 4, Subseries A, Box 7, Folder 7
Cemetery Proposal, McClung St./Maple Hill Cemetery, 1984**

[Contents](#) [Index](#) [About](#)

Name & Place Index

Acme Marble and Granite [8](#)
Allen, Ed [1](#), [11](#)
Balisok, Jerry Bibb [9](#)
Bibb, Governor [25](#)
Blankenship, Clyde Alan [13](#)
Buffaloe, Lipscol [1](#), [11](#)
cemetery [10](#), [15](#), [16](#)
Constitution Park [24](#)
Davis, James E., Jr. [2](#)
Davis, Joe W., Mayor [3](#), [4](#), [5](#), [27](#)
Eslick, Willa M. [1](#), [11](#)
Georgia Cemetery [25](#)
Glenn, John [5](#)
Gowan, Miriam [1](#), [11](#)
Harris, Delilah [1](#), [11](#)
Harris, Jack [1](#), [11](#)
Hidalgo Co., TX [20](#)
Hughes, Cutter [13](#)
Hughes, E. Cutter, Jr. [2](#)
Huntsville Board of Zoning Adjustment [1](#), [2](#), [11](#), [13](#)
Huntsville Pilgrimage Association [25](#)
Huntsville, AL [3](#), [4](#), [5](#), [6](#), [7](#), [10](#), [23](#), [24](#), [25](#), [26](#), [27](#), [28](#),
[29](#), [30](#), [31](#)
Huntsville, City of [12](#)
Kauffman, Ernest [5](#)
Lanier, Shaver & Herring [13](#)
Mabry, Jane [5](#)
Madison Co., AL [1](#), [2](#), [11](#), [12](#), [13](#), [14](#), [15](#), [16](#), [17](#), [18](#), [19](#),
[21](#), [22](#)
Maple Hill Cemetery [2](#), [12](#), [13](#), [18](#), [24](#), [25](#), [26](#), [27](#), [28](#),
[29](#), [30](#), [31](#)
McClung Avenue cemetery [12](#)
McClung Cemetery property [3](#), [5](#)
McClung Street proposal [6](#), [7](#)
McCown, Gene Luther [1](#)
McCown, James R. [1](#), [14](#), [19](#), [22](#), [30](#)
McCown, Jeanne Luther [14](#), [19](#)
McCullough, Jim [1](#), [11](#)
New Orleans, LA [8](#)
Page, William D., Judge [13](#)
Patton, Governor [25](#)
Perry, Kathleen W. [1](#), [3](#), [11](#), [14](#), [19](#), [20](#)
Perry, Kathleen Whitfield [27](#)
Perry, Robert A. [14](#), [19](#), [20](#)
Perry, Robert [1](#)
Pope, LeRoy [24](#), [25](#)
Ragland, Edward R. [1](#), [14](#), [19](#), [21](#), [30](#)
Ragland, Sue Turner [1](#), [14](#), [19](#), [22](#)
Ransom, Colman [23](#)
Ritch, Joe H. [5](#)
Roberts, Frances [23](#)
Russel, Albert [26](#)
Sommersell, Charlie [23](#)
Stewart Enterprises [8](#)
Tallent, Bill [5](#)
Thomas White Subdivision [31](#)
Twickenham Historical District [23](#)
Twickenham Preservation District [24](#)
Twickenham Woman's Club [25](#)
Wall, Jimmy, Dr. [5](#)
Wall, Jimmy, Jr. [31](#)
Whitfield tract [31](#)
Whitfield, Anne S. [1](#), [11](#), [14](#), [17](#), [19](#), [21](#)
Whitfield, Anne [3](#), [27](#), [28](#)
Whitfield, W. B. [31](#)
Whitfield, [25](#), [26](#)
Wilson, Steve [1](#), [11](#)
Younger, Charles [5](#)

Frances Cabaniss Roberts Collection

Preferred Citation: Frances Cabaniss Roberts Collection, Archives and Special Collections, M. Louis Salmon Library, University of Alabama in Huntsville, Huntsville, AL.

Collection Scope and Content: The Collection of 114 Linear ft. includes a total of 156 Archival Boxes. The Frances Cabaniss Roberts collection covers the historical records of the Cabaniss Roberts family. This collection contains extensive correspondence records of the Cabaniss Roberts family circa 1830 to 1930.

Archives/Special Collections Access Restrictions: None

Conditions Governing Use: This material may be protected under U. S. Copyright Law (Title 17, U.S. Code) which governs the making of photocopies or reproductions of copyrighted materials. You may use the digitized material for private study, scholarship, or research. Though the University of Alabama in Huntsville Archives and Special Collections has physical ownership of the material in its collections, in some cases we may not own the copyright to the material. It is the patron's obligation to determine and satisfy copyright restrictions when publishing or otherwise distributing materials found in our collections.

Provenance: Gift of Johanna Shields on October 28, 2006.



THE UNIVERSITY OF
ALABAMA IN HUNTSVILLE

**The UAH Archives and Special Collections
M. Louis Salmon Library**