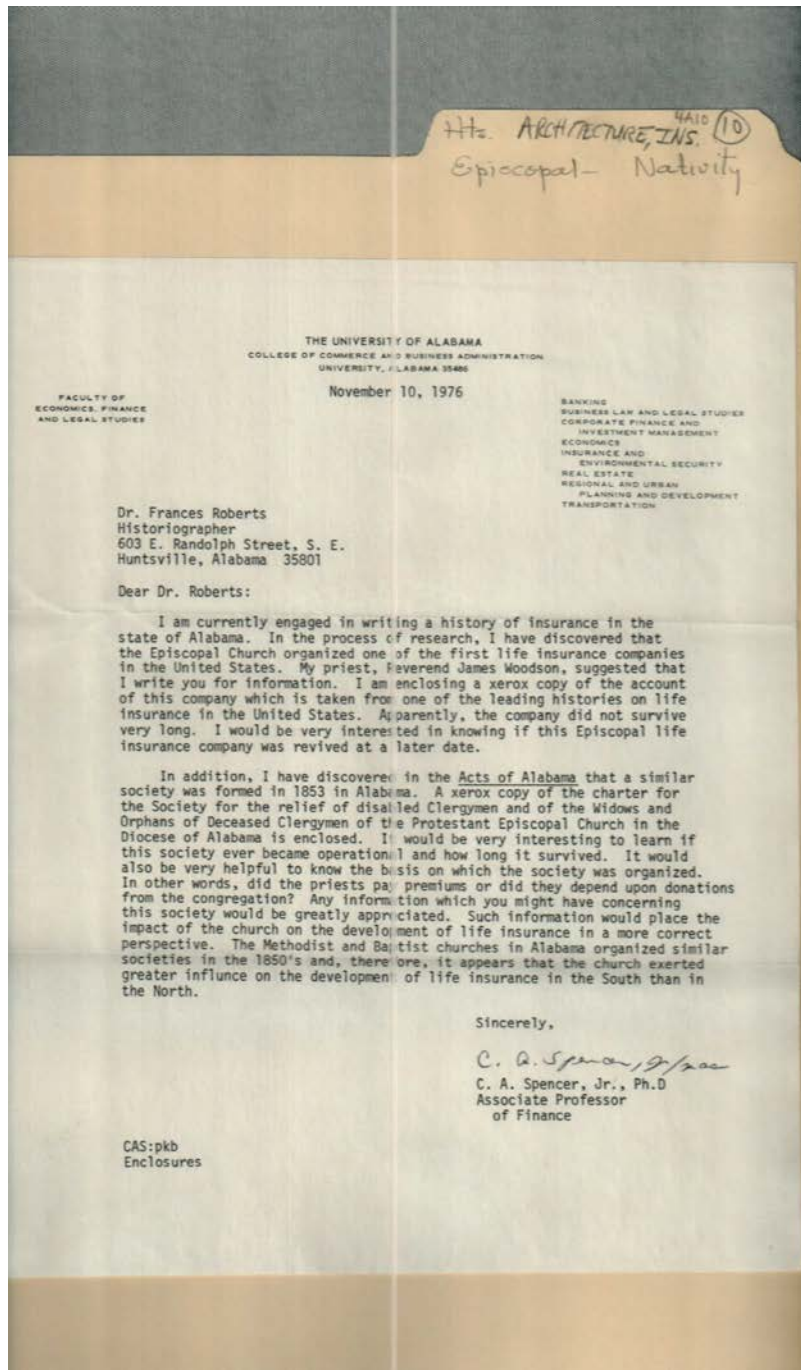


Frances Cabaniss Roberts Collection: Series 4, Subseries A, Box 10, Folder 10

Church of Nativity (Episcopal) Architecture and Insurance

Image 1 r04a10-10-000-0051 [Contents](#) [Index](#) [About](#)



Names:

Life Insurance
Companies

Roberts, Frances, Dr.
Spencer, C. A., Jr.

Woodson, James,
Rev.

Places:

Huntsville, AL

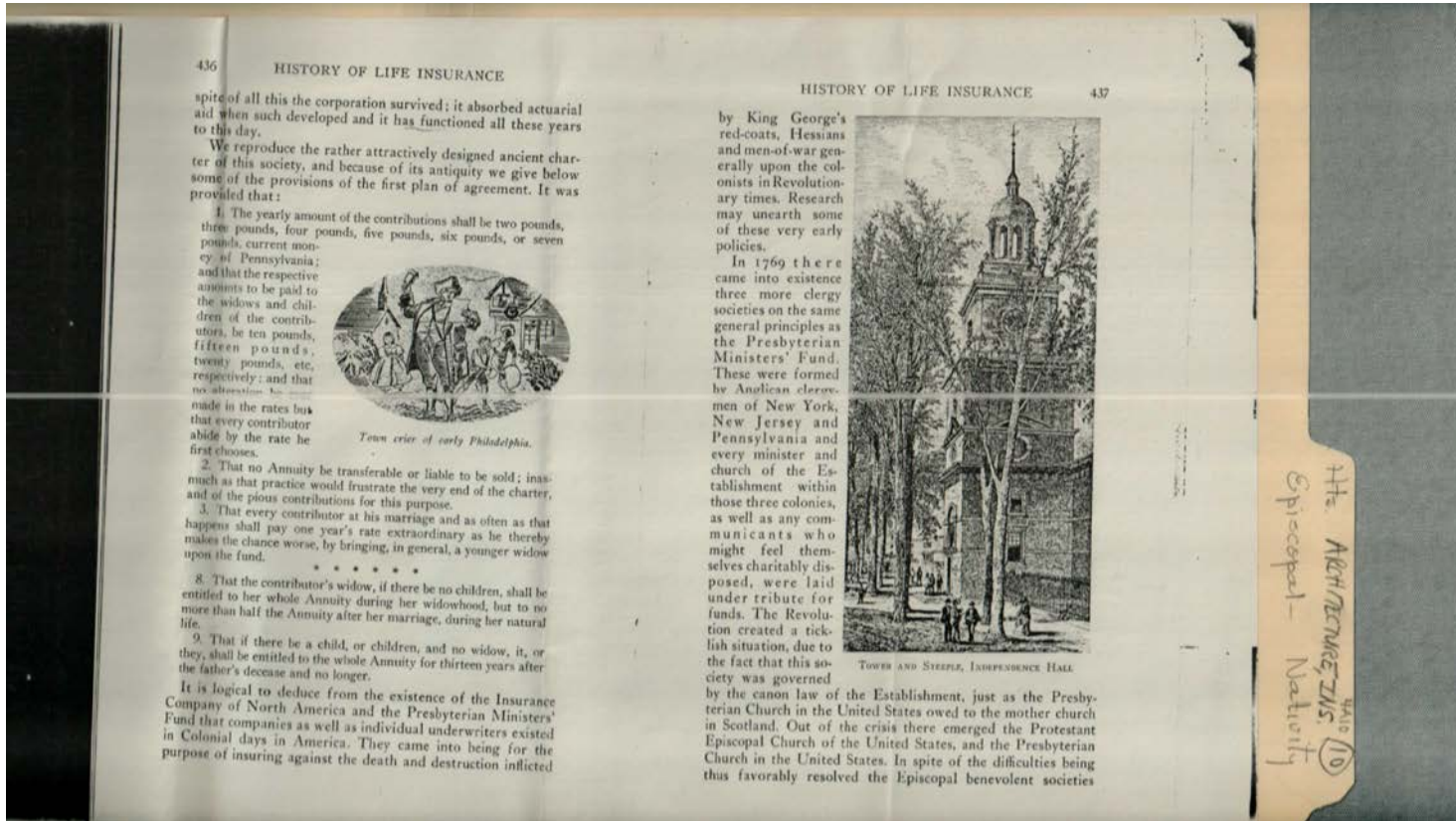
University, AL

Types:

correspondence

Dates:

Nov 10, 1976



Names:

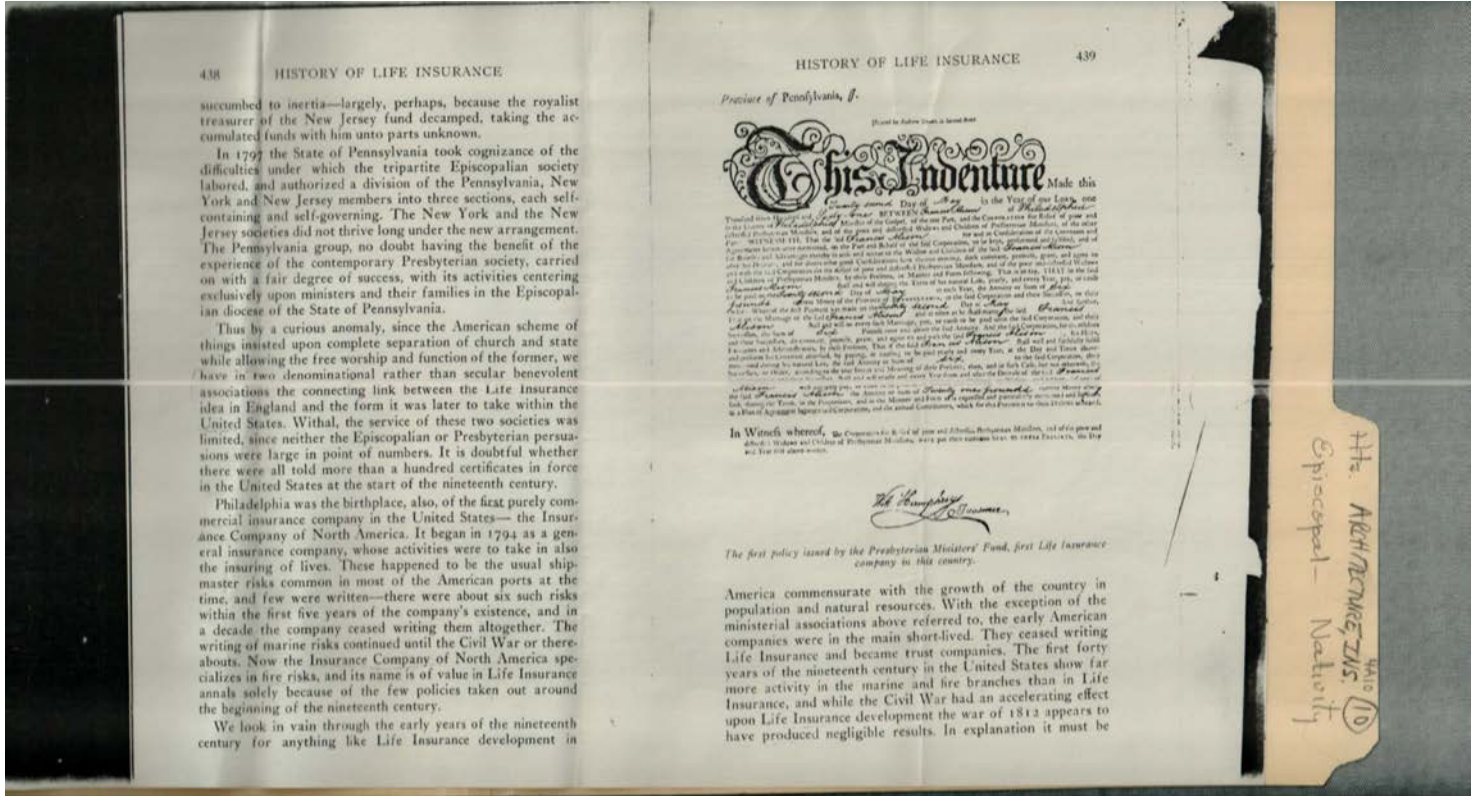
History of Life Insurance pp. 436-437

Types:

book

Dates:

Nov 10, 1976



Names:

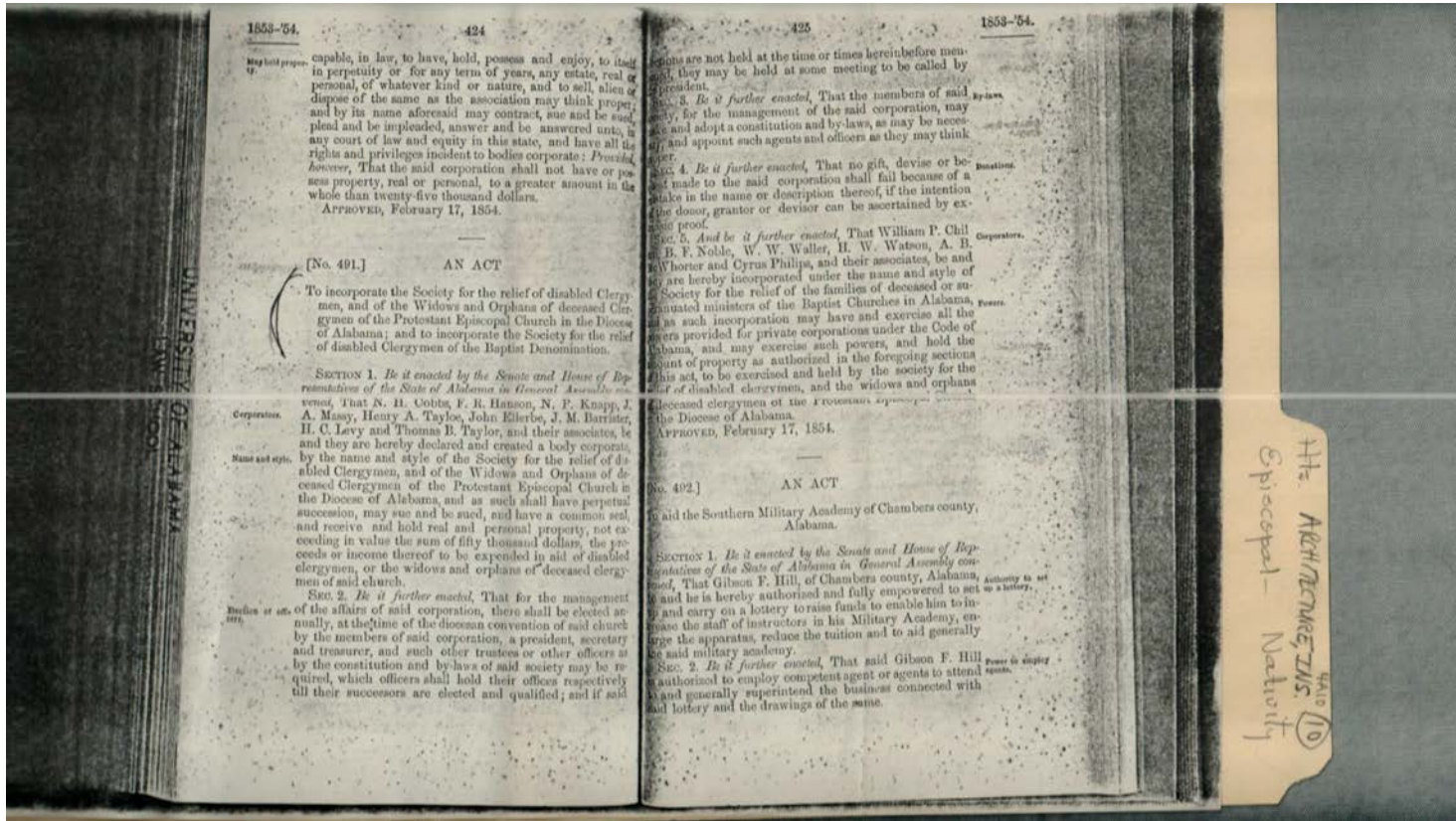
History of Life Insurance pp. 438-439

Types:

book

Dates:

Nov 10, 1976



Names:

Acts of Alabama pp.
424-425

Types:

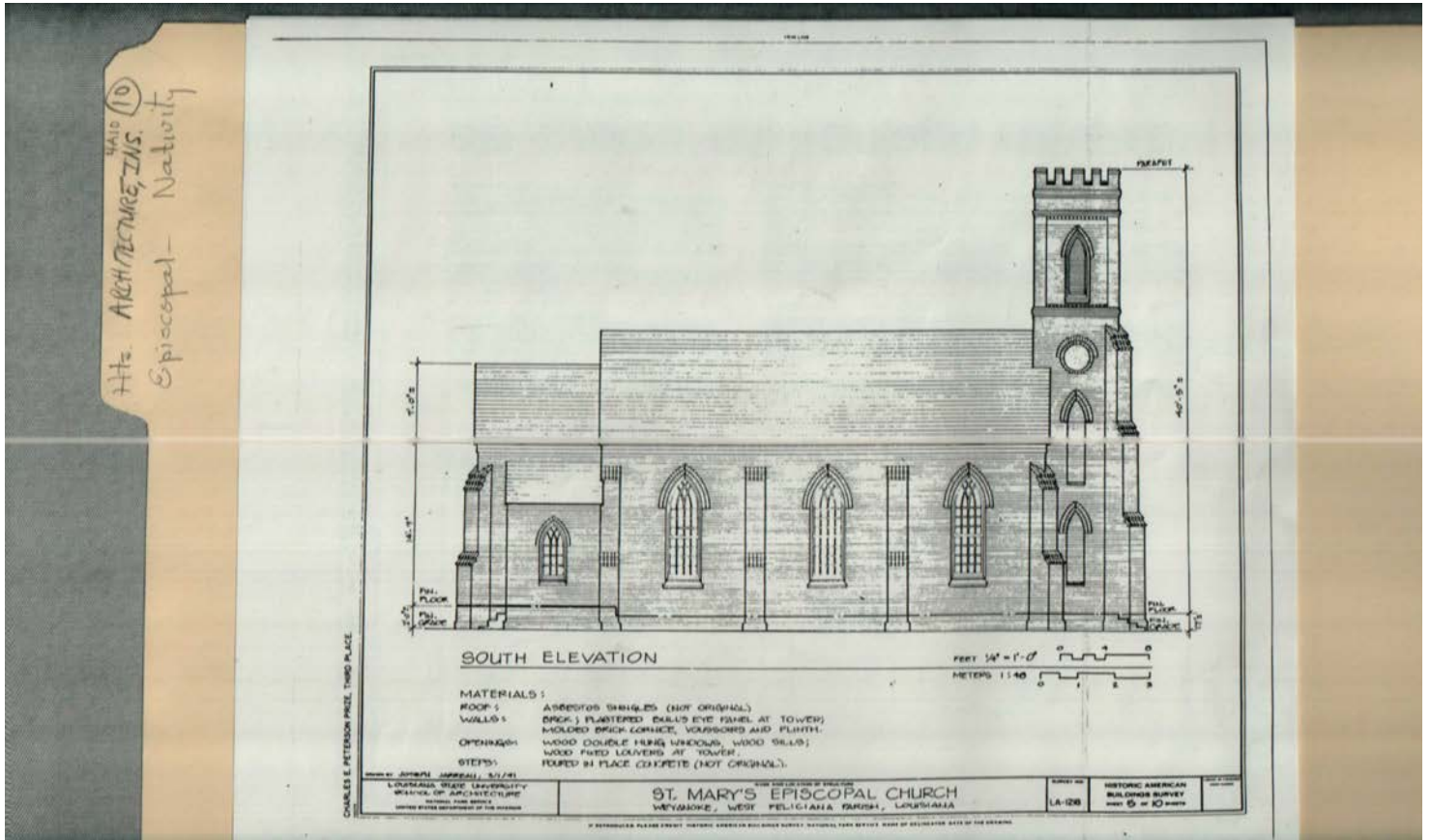
book

Dates:

Nov 10, 1976

Church of Nativity (Episcopal) Architecture and Insurance

Image 5 r04a10-10-000-0055 [Contents](#) [Index](#) [About](#)



Names:

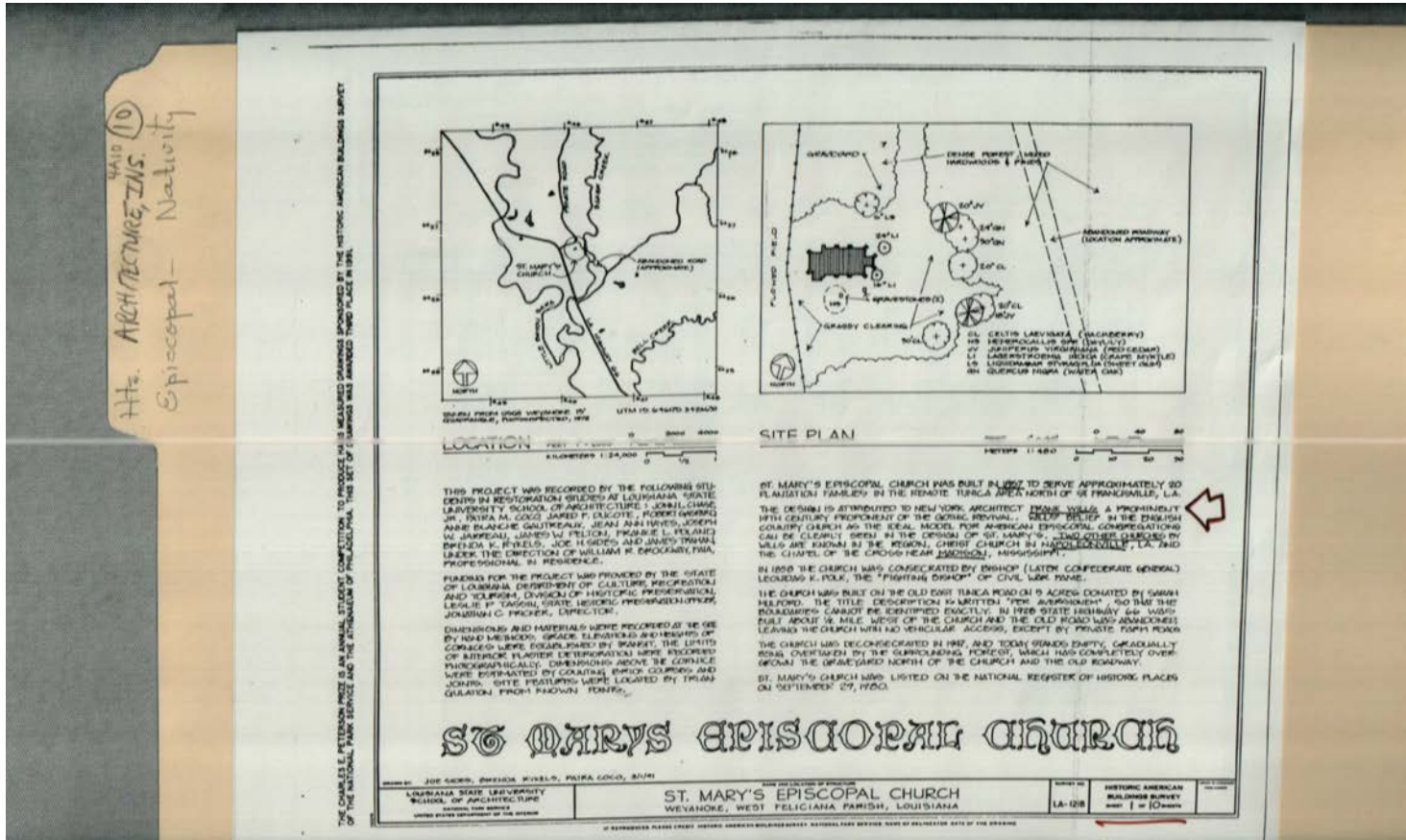
St. Mary's Episcopal
Church

Places:

Weyanoke, LA

Types:

drawing

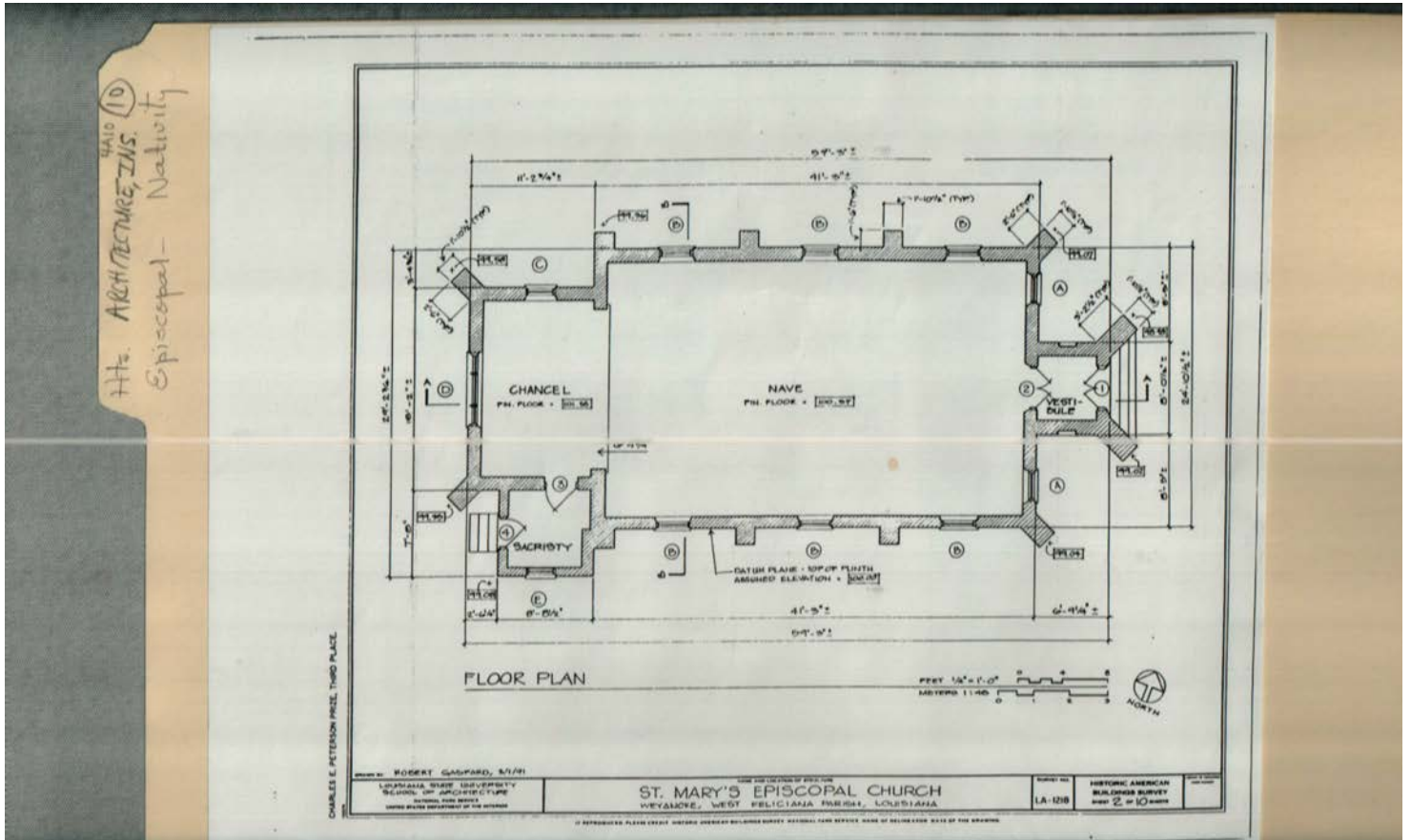


Names:
 St. Mary's Episcopal
 Church Site Plan

Places:
 Weyanoke, LA

Types:
 drawing

Church of Nativity (Episcopal) Architecture and Insurance



Names:

St. Mary's Episcopal
Church Floor Plan

Places:

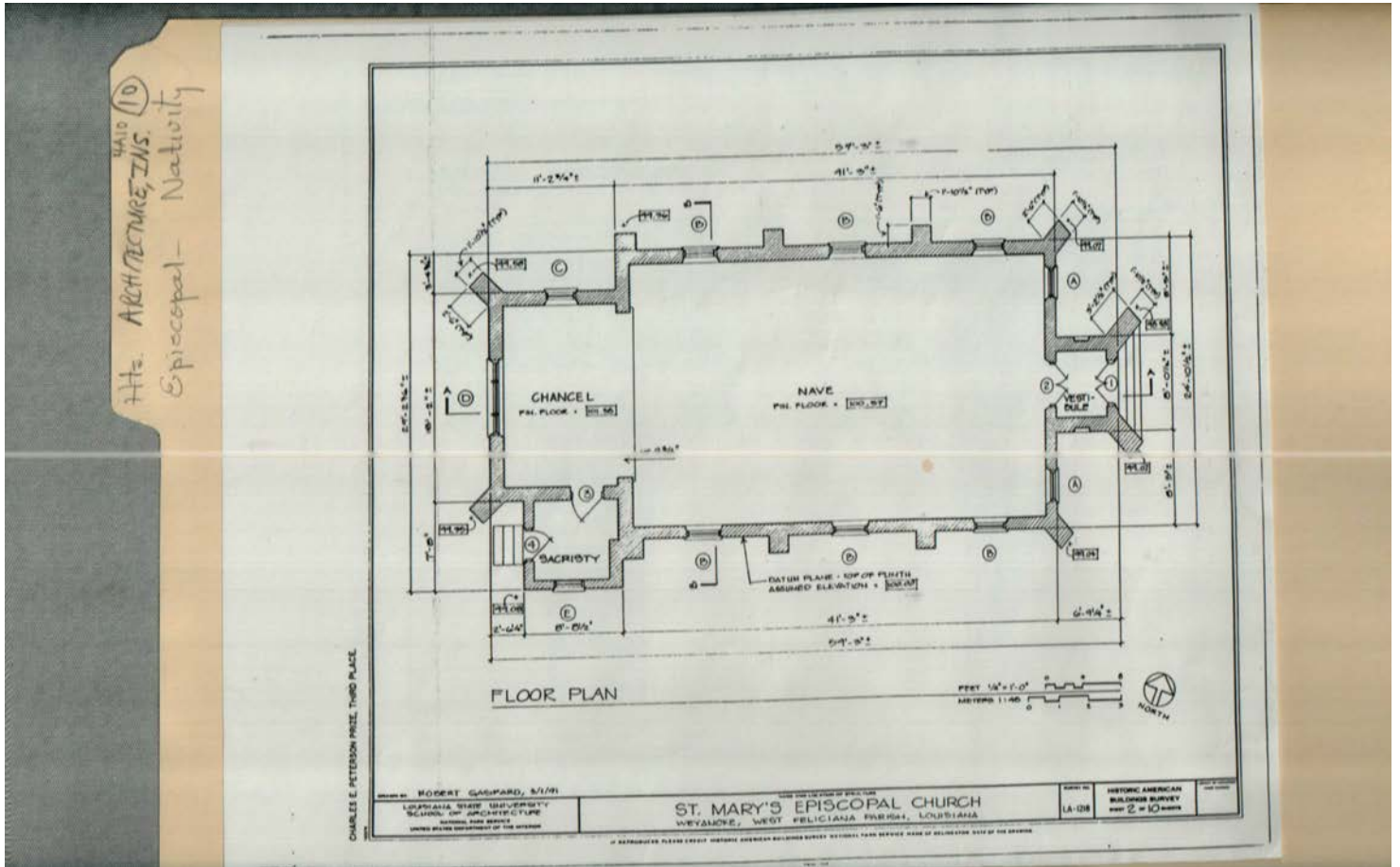
Weyanoke, LA

Types:

drawing

Church of Nativity (Episcopal) Architecture and Insurance

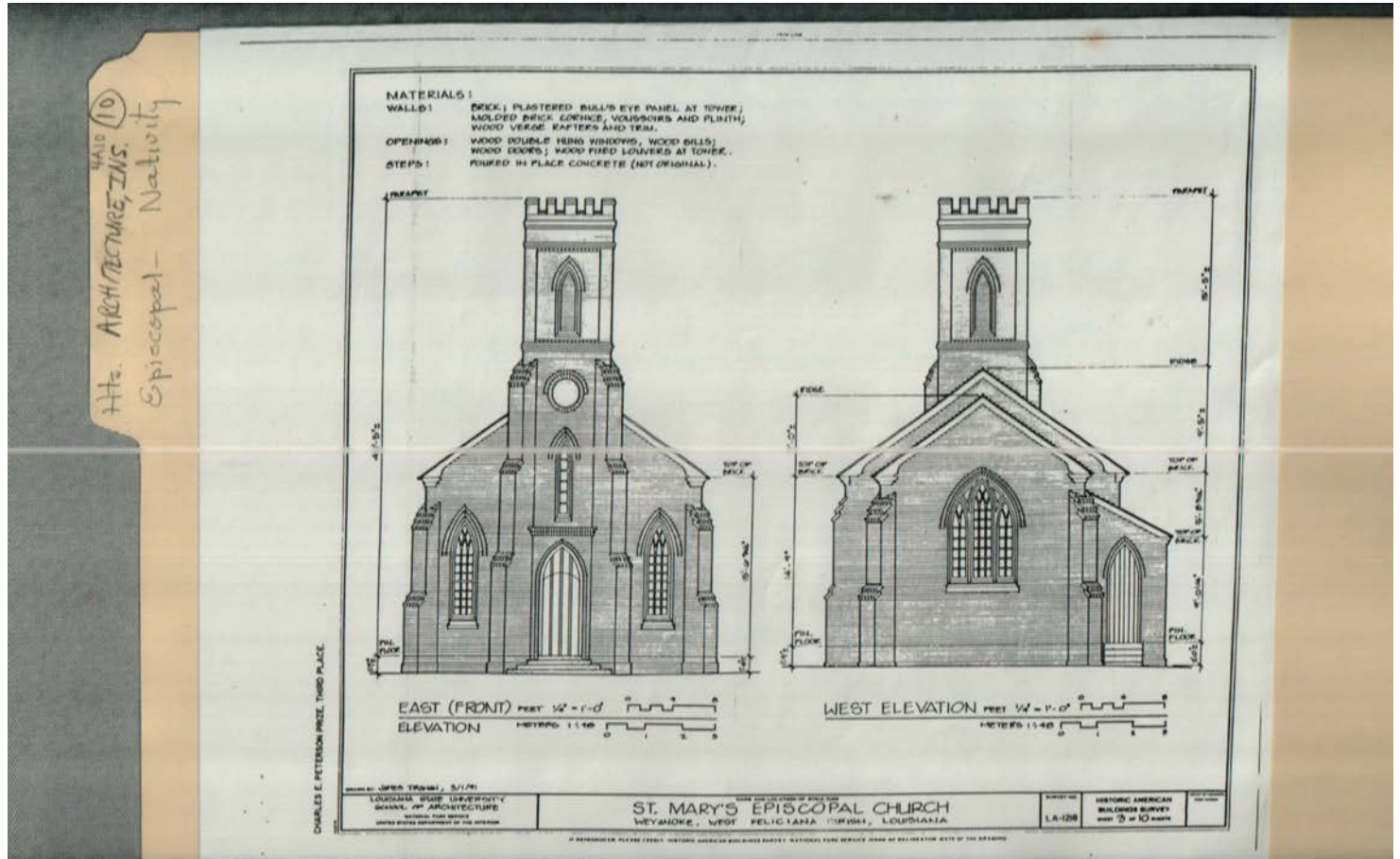
Image 8 r04a10-10-000-0059 [Contents](#) [Index](#) [About](#)



Duplicate of image 57

Church of Nativity (Episcopal) Architecture and Insurance

Image 9 r04a10-10-000-0058 [Contents](#) [Index](#) [About](#)



Names:

St. Mary's Episcopal
Church - Front &

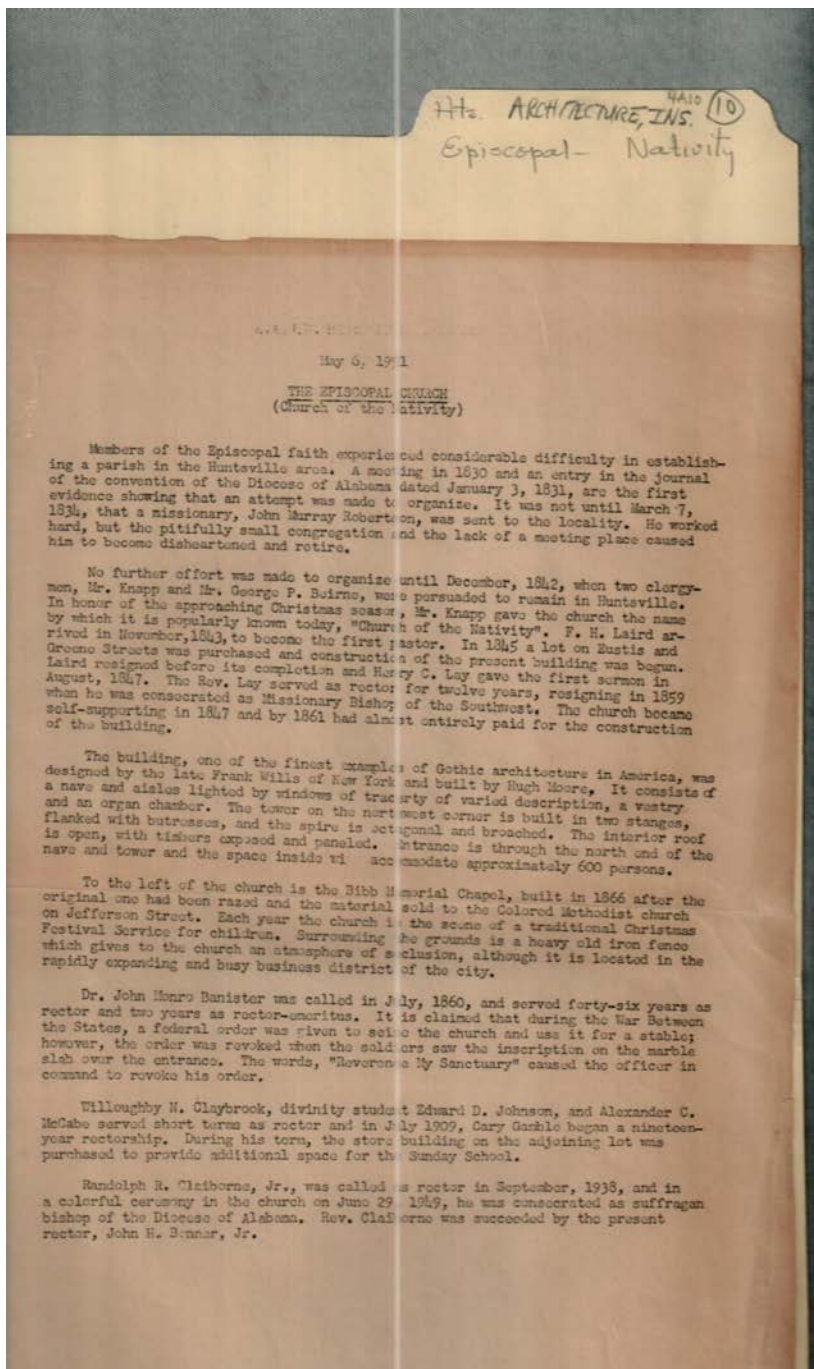
Rear View

Places:

Weyanoke, LA

Types:

drawing



Names:

Banister, John Munro,
Rev. Dr.
Beirne, George P.
Bonner, John H., Jr.,
Rev.

Claiborne, Randolph
R., Jr., Rev.
Claybrook,
Willoughby N.,
Rev.
Gamble, Cary, Rev.

Johnson, Edward D.
Knapp,
Laird, F. H., Rev.
Lay, Henry C., Rev.
McCabe, Alexander
C., Rev.

Moore, Hugh
Robertson, John
Murray
The Episcopal
Church (Church of
the Nativity)

Places:

Huntsville, AL

Types:

history

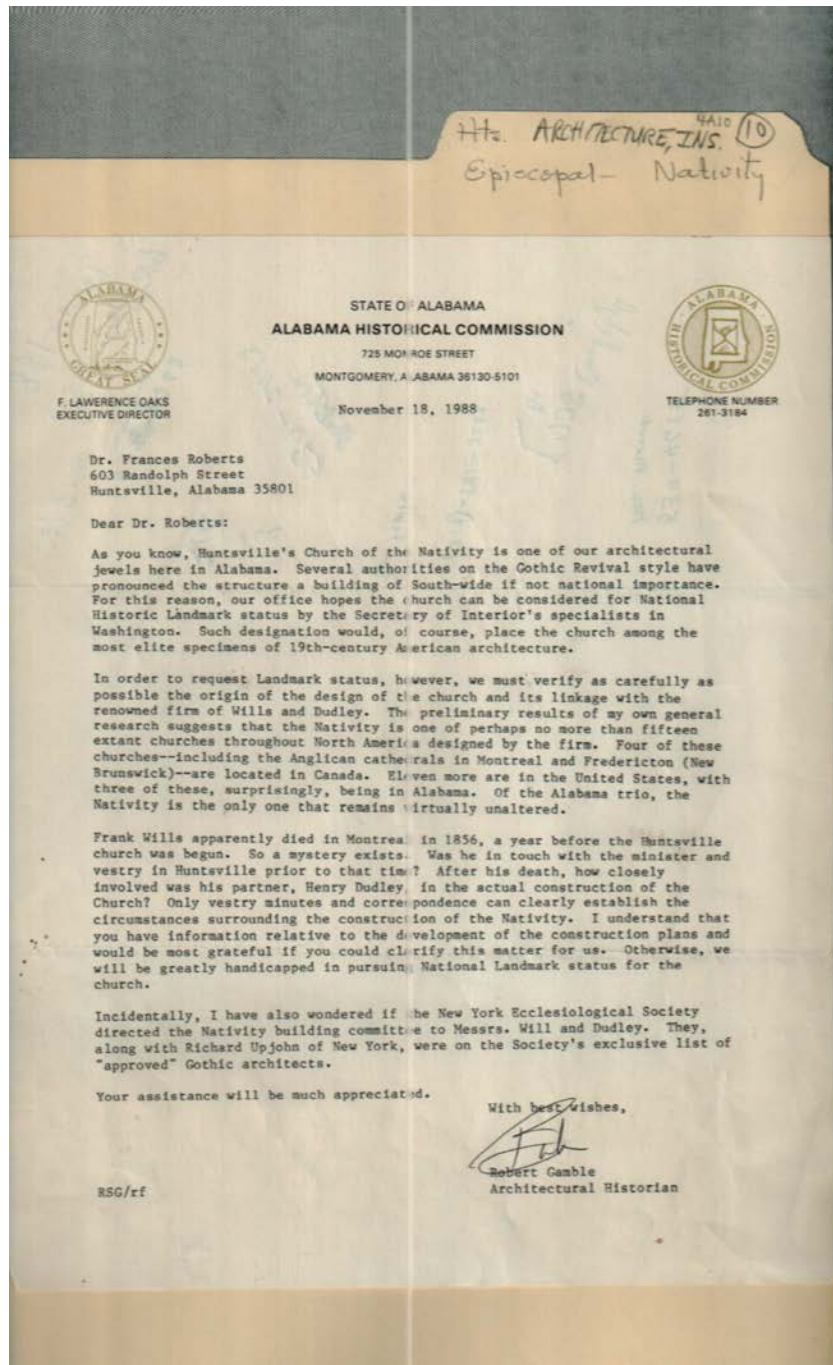
Dates:

May 6, 1991

Frances Cabaniss Roberts Collection: Series 4, Subseries A, Box 10, Folder 10

Church of Nativity (Episcopal) Architecture and Insurance

Image 11 r04a10-10-000-0061 [Contents](#) [Index](#) [About](#)



Names:

Alabama Historical
Commission

Dudley, Henry
Gamble, Robert

Roberts, Frances, Dr.
Upjohn, Richard

Wills and Dudley
Wills, Frank

Places:

Huntsville, AL

Montgomery, AL

Types:

correspondence

Dates:

Nov 18, 1988

Frances Cabaniss Roberts Collection: Series 4, Subseries A, Box 10, Folder 10
Church of Nativity (Episcopal) Architecture and Insurance

[Contents](#) [Index](#) [About](#)

Table of Contents

[Image 1](#) (r04a10-10-000-0051)

[Image 2](#) (r04a10-10-000-0052)

[Image 3](#) (r04a10-10-000-0053)

[Image 4](#) (r04a10-10-000-0054)

[Image 5](#) (r04a10-10-000-0055)

[Image 6](#) (r04a10-10-000-0056)

[Image 7](#) (r04a10-10-000-0057)

[Image 8](#) (r04a10-10-000-0059)

[Image 9](#) (r04a10-10-000-0058)

[Image 10](#) (r04a10-10-000-0060)

[Image 11](#) (r04a10-10-000-0061)

[Table of Contents](#)

[Name & Place Index](#)

[About the Collection](#)

Frances Cabaniss Roberts Collection: Series 4, Subseries A, Box 10, Folder 10

Church of Nativity (Episcopal) Architecture and Insurance

[Contents](#) [Index](#) [About](#)

Name & Place Index

Acts of Alabama pp. 424-425 [4](#)
Alabama Historical Commission [11](#)
Banister, John Munro, Rev. Dr. [10](#)
Beirne, George P. [10](#)
Bonner, John H., Jr., Rev. [10](#)
Claiborne, Randolph R., Jr., Rev. [10](#)
Claybrook, Willoughby N., Rev. [10](#)
Dudley, Henry [11](#)
Gamble, Cary, Rev. [10](#)
Gamble, Robert [11](#)
History of Life Insurance pp. 436-437 [2](#)
History of Life Insurance pp. 438-439 [3](#)
Huntsville, AL [1](#), [10](#), [11](#)
Johnson, Edward D. [10](#)
Knapp, [10](#)
Laird, F. H., Rev. [10](#)
Lay, Henry C., Rev. [10](#)
Life Insurance Companies [1](#)
McCabe, Alexander C., Rev. [10](#)
Montgomery, AL [11](#)
Moore, Hugh [10](#)
Roberts, Frances, Dr. [1](#), [11](#)
Robertson, John Murray [10](#)
Spencer, C. A., Jr. [1](#)
St. Mary's Episcopal Church - Front & Rear View [9](#)
St. Mary's Episcopal Church Floor Plan [7](#)
St. Mary's Episcopal Church Site Plan [6](#)
St. Mary's Episcopal Church [5](#)
The Episcopal Church (Church of the Nativity) [10](#)
University, AL [1](#)
Upjohn, Richard [11](#)
Weyanoke, LA [5](#), [6](#), [7](#), [9](#)
Wills and Dudley [11](#)
Wills, Frank [11](#)
Woodson, James, Rev. [1](#)

Frances Cabaniss Roberts Collection

Preferred Citation: Frances Cabaniss Roberts Collection, Archives and Special Collections, M. Louis Salmon Library, University of Alabama in Huntsville, Huntsville, AL.

Collection Scope and Content: The Collection of 114 Linear ft. includes a total of 156 Archival Boxes. The Frances Cabaniss Roberts collection covers the historical records of the Cabaniss Roberts family. This collection contains extensive correspondence records of the Cabaniss Roberts family circa 1830 to 1930.

Archives/Special Collections Access Restrictions: None

Conditions Governing Use: This material may be protected under U. S. Copyright Law (Title 17, U.S. Code) which governs the making of photocopies or reproductions of copyrighted materials. You may use the digitized material for private study, scholarship, or research. Though the University of Alabama in Huntsville Archives and Special Collections has physical ownership of the material in its collections, in some cases we may not own the copyright to the material. It is the patron's obligation to determine and satisfy copyright restrictions when publishing or otherwise distributing materials found in our collections.

Provenance: Gift of Johanna Shields on October 28, 2006.



THE UNIVERSITY OF
ALABAMA IN HUNTSVILLE

**The UAH Archives and Special Collections
M. Louis Salmon Library**