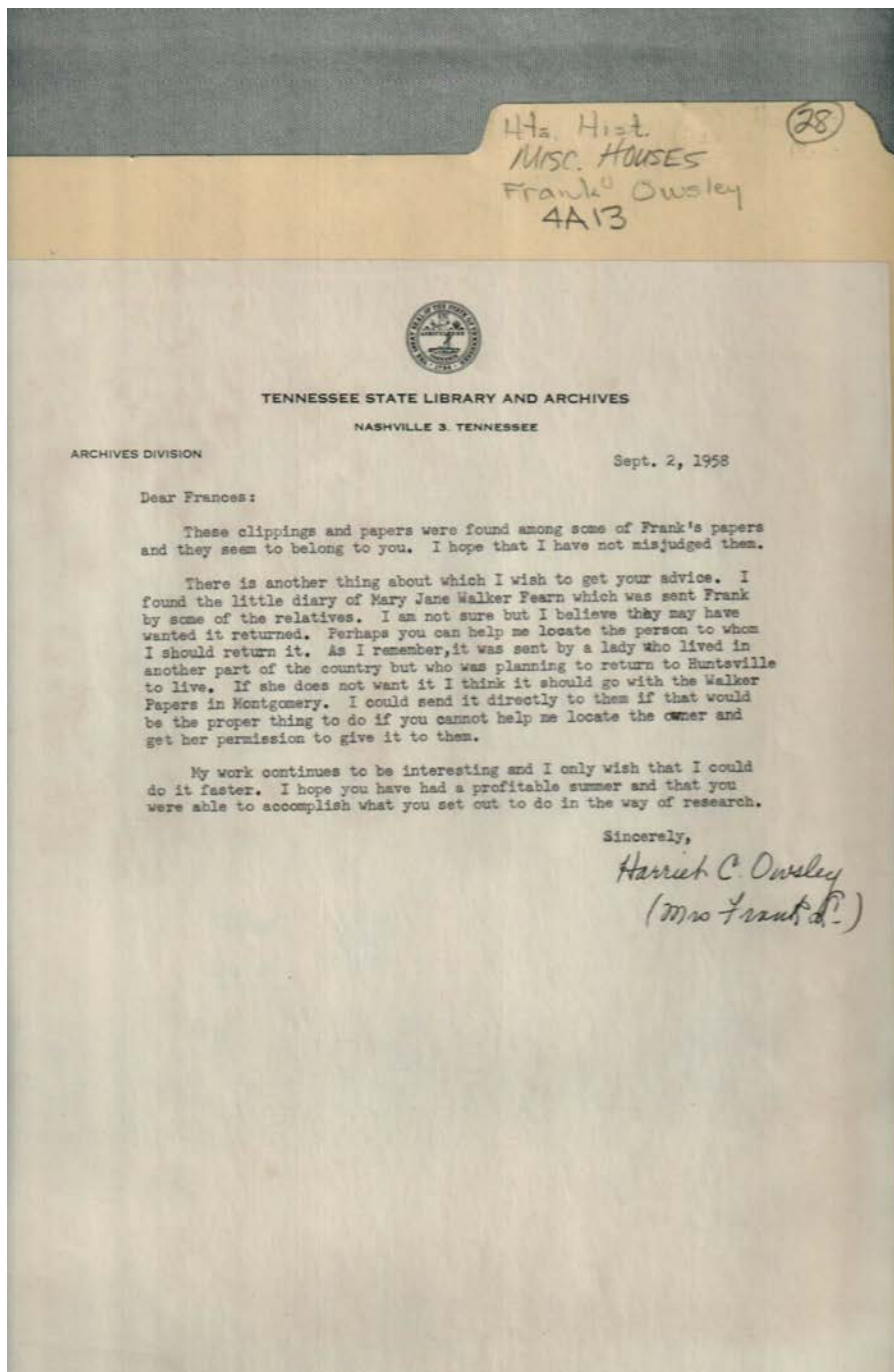


Frances Cabaniss Roberts Collection: Series 4, Subseries A, Box 13, Folder 28

Huntsville Houses, miscellaneous - Houses

Image 1 r04a13-28-000-0001 [Contents](#) [Index](#) [About](#)



**Names:**

Fearn, Mary Jane Walker

Owsley, Frank L.,  
Mrs.  
Owsley, Harriet C.

Roberts, Frances  
Tennessee State  
Library and

Archives

**Places:**

Huntsville, AL

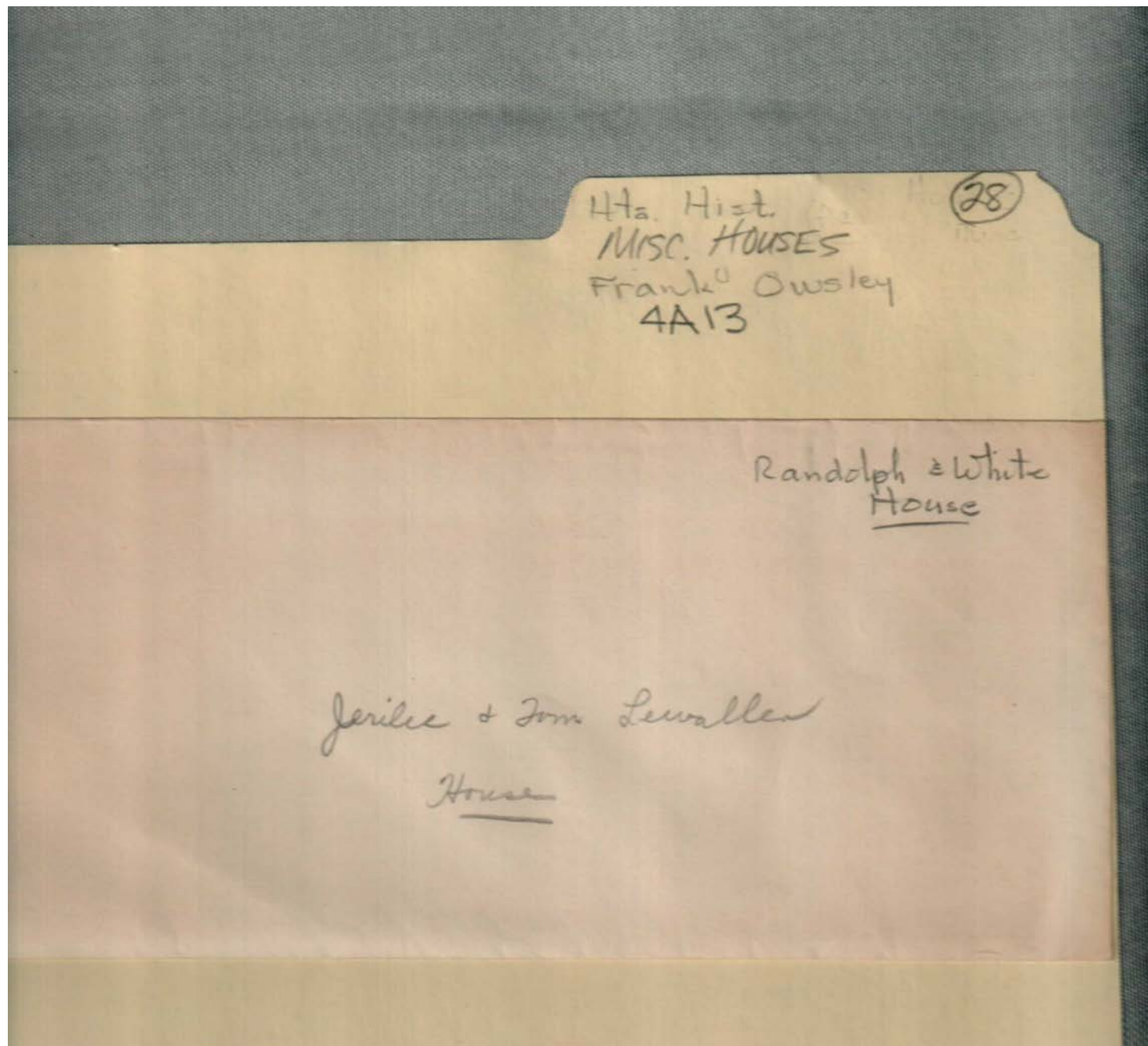
Nashville, TN

**Types:**

correspondence

**Dates:**

Sept 2, 1958



**Names:**

Lewallen House

Lewallen, Jerilee

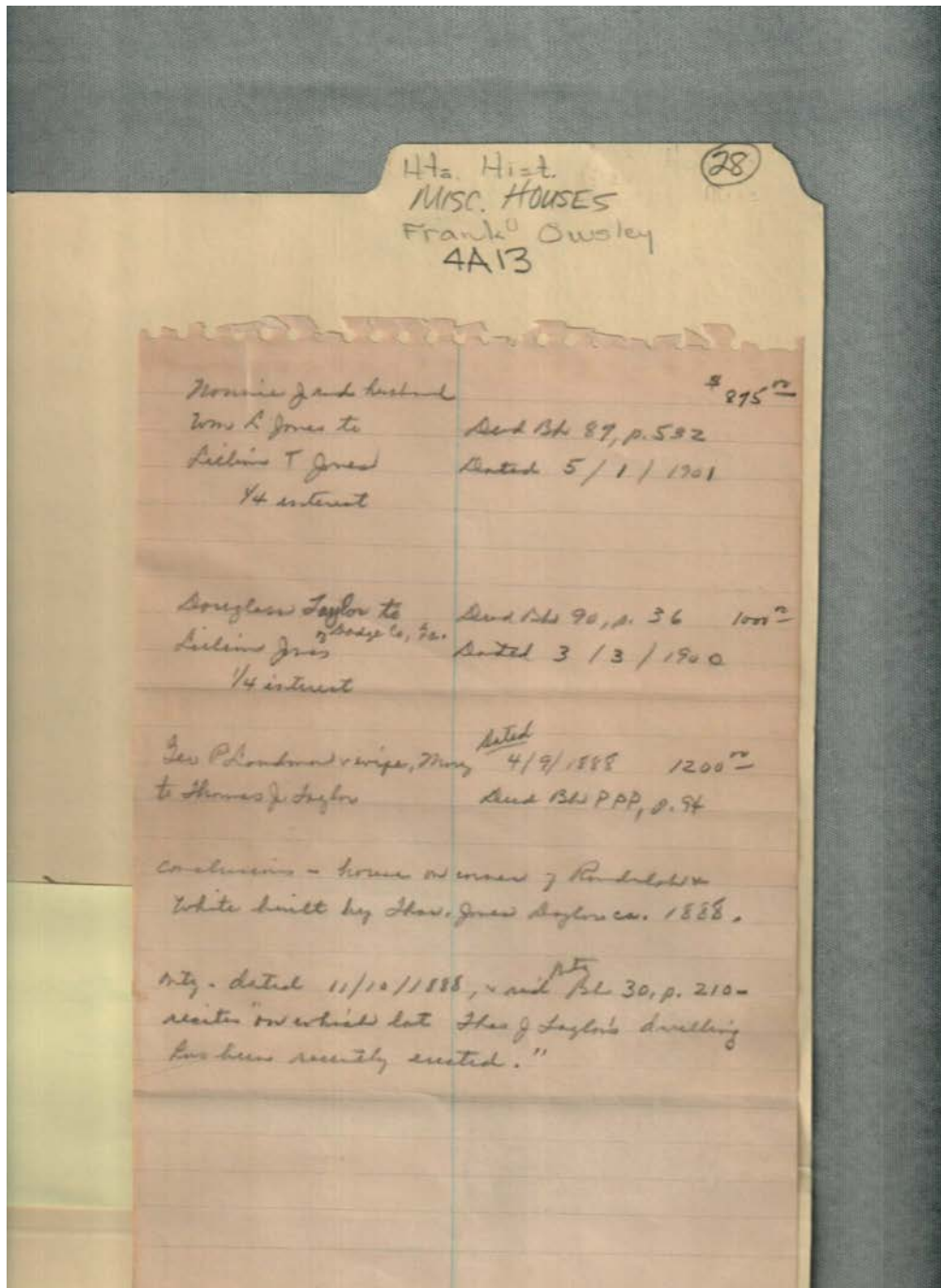
Lewallen, Tom

**Places:**

Huntsville, AL

**Types:**

memo



**Names:**

Jones, Lillian  
Jones, Nannie J.

Jones, William L.

Landman, George P.  
& Mary

Taylor, Douglass  
Taylor, Thomas Jones

**Places:**

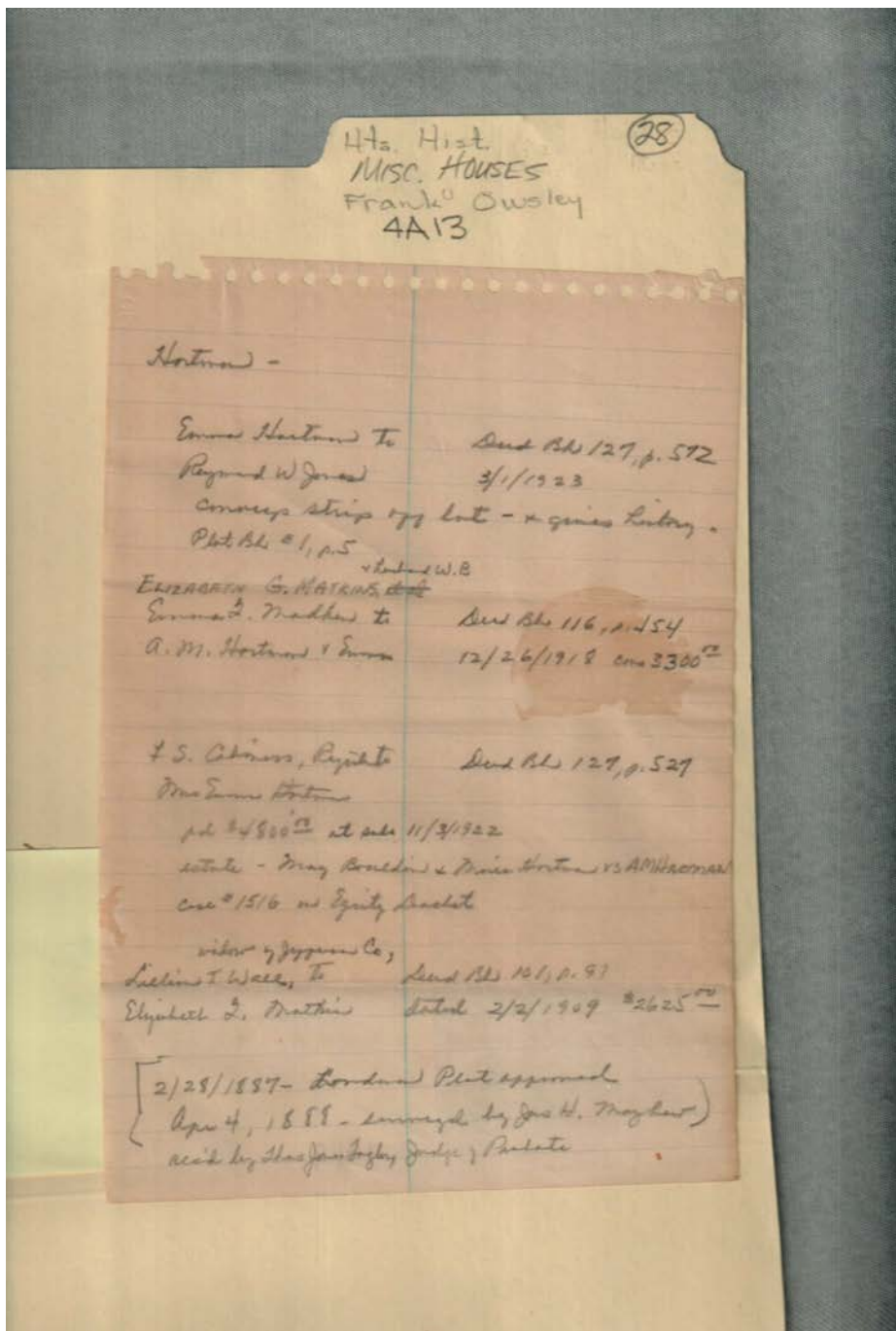
Huntsville, AL

**Types:**

abstract

**Dates:**

ca. 1888



**Names:**

Bouldin, Mary  
Cabaniss, F. S.,  
Register

Hartman, A. M.  
Hartman, Emma  
Hartman, Marie

Jones, Raymond W.  
Matkin, Elizabeth G.  
Mayhew, J. H.

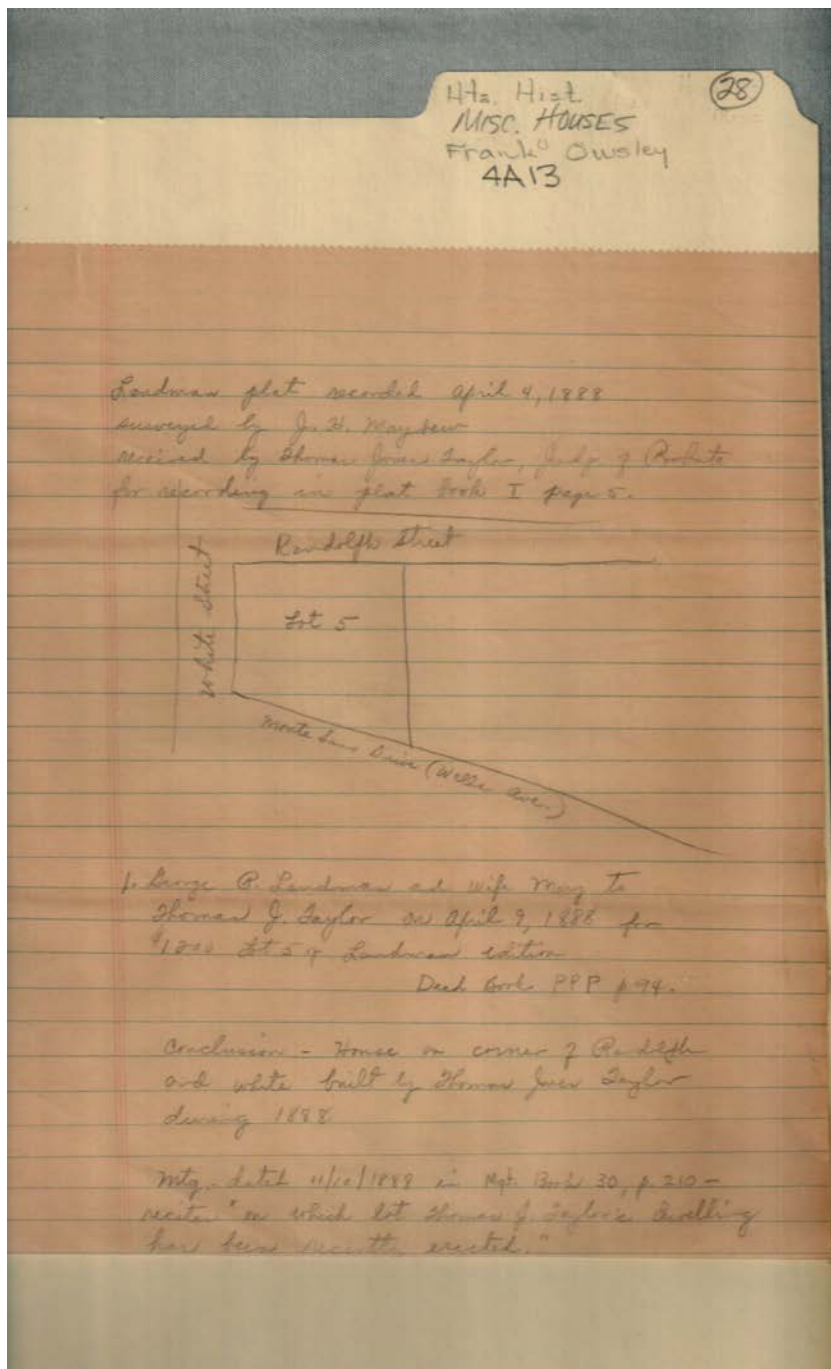
Wall, Lillian T.

**Places:**

Huntsville, AL

**Types:**

abstract



**Names:**

Landman, George P.

Mayhew, J. H.

Taylor, Thomas Jones

**Places:**

Huntsville, AL

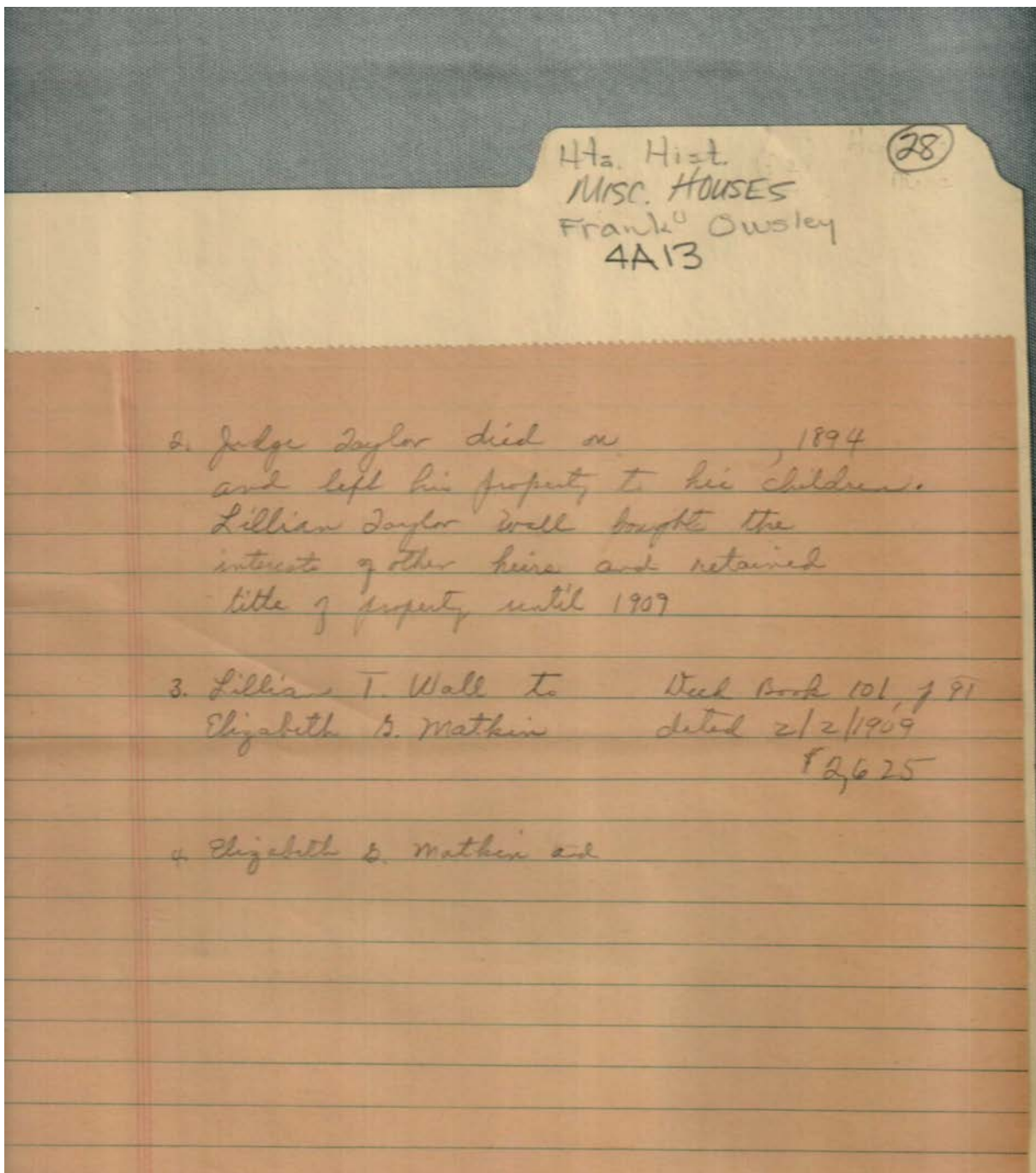
**Types:**

abstract

plat

**Dates:**

1888



**Names:**

Matkin, Elizabeth G.

Taylor, Thomas J.,  
Judge

Wall, Lillian Taylor

**Places:**

Huntsville, AL

**Types:**

abstract

note

**Dates:**

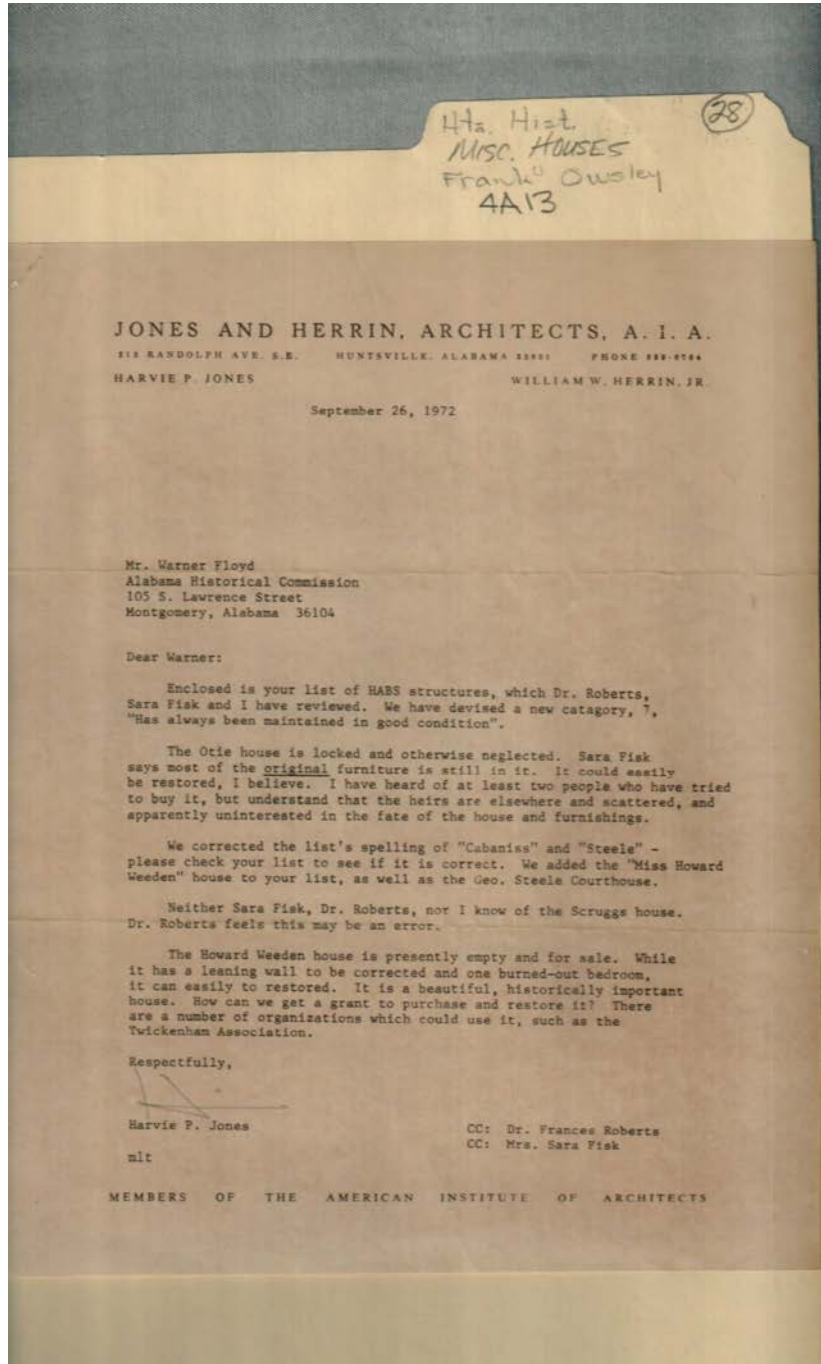
1894

1909

Frances Cabaniss Roberts Collection: Series 4, Subseries A, Box 13, Folder 28

Huntsville Houses, miscellaneous - Houses

Image 7 r04a13-28-000-0007 [Contents](#) [Index](#) [About](#)



**Names:**

Fisk, Sara  
Floyd, Warner  
George Steele  
Courthouse

Howard Weeden  
House  
Jones, Harvie P.  
Otie House

Otie House  
Roberts, Frances, Dr.  
Weeden, Howard,  
Miss

**Places:**

Huntsville, AL

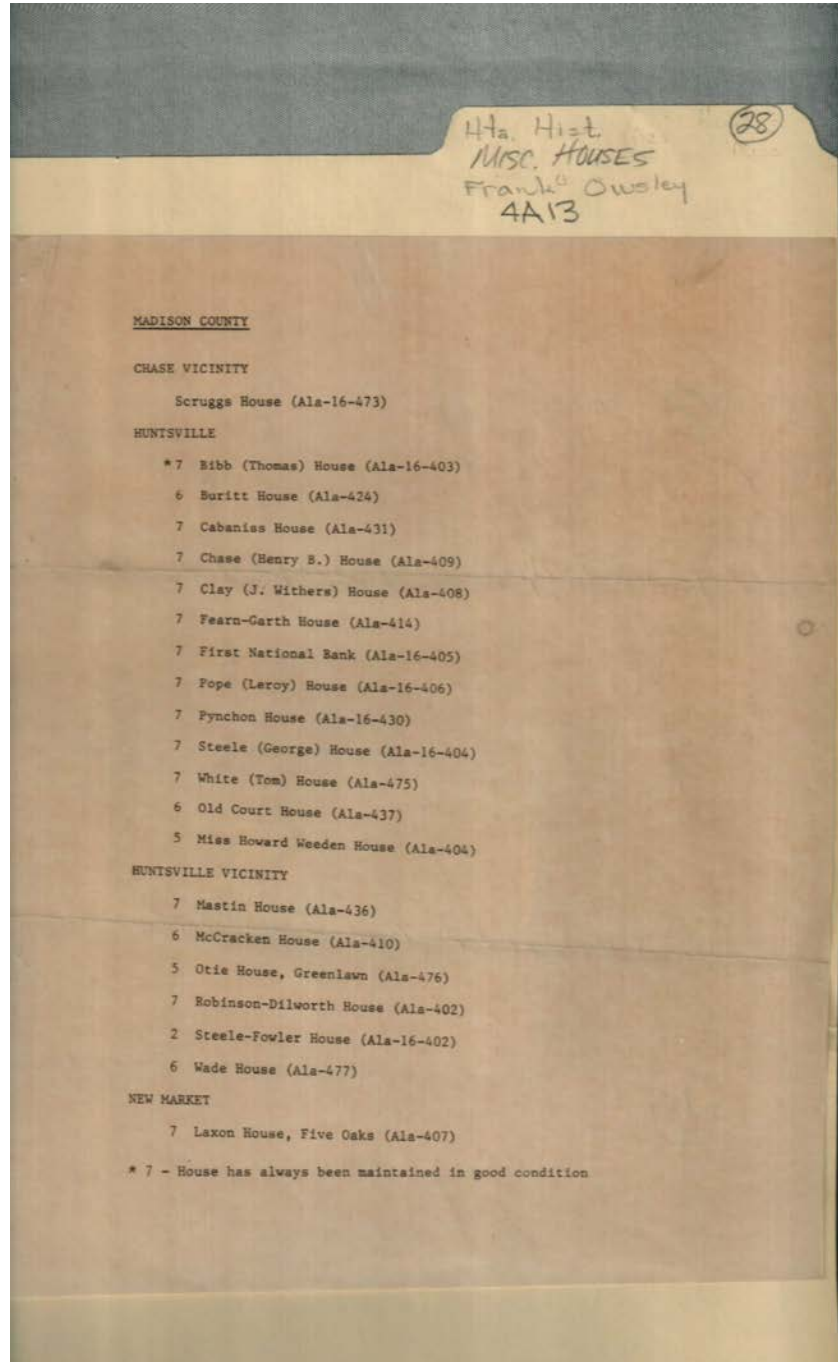
Montgomery, AL

**Types:**

correspondence

**Dates:**

Sept 26, 1972



**Names:**

Historic Houses in  
Madison County

**Places:**

Madison Co., AL

**Types:**

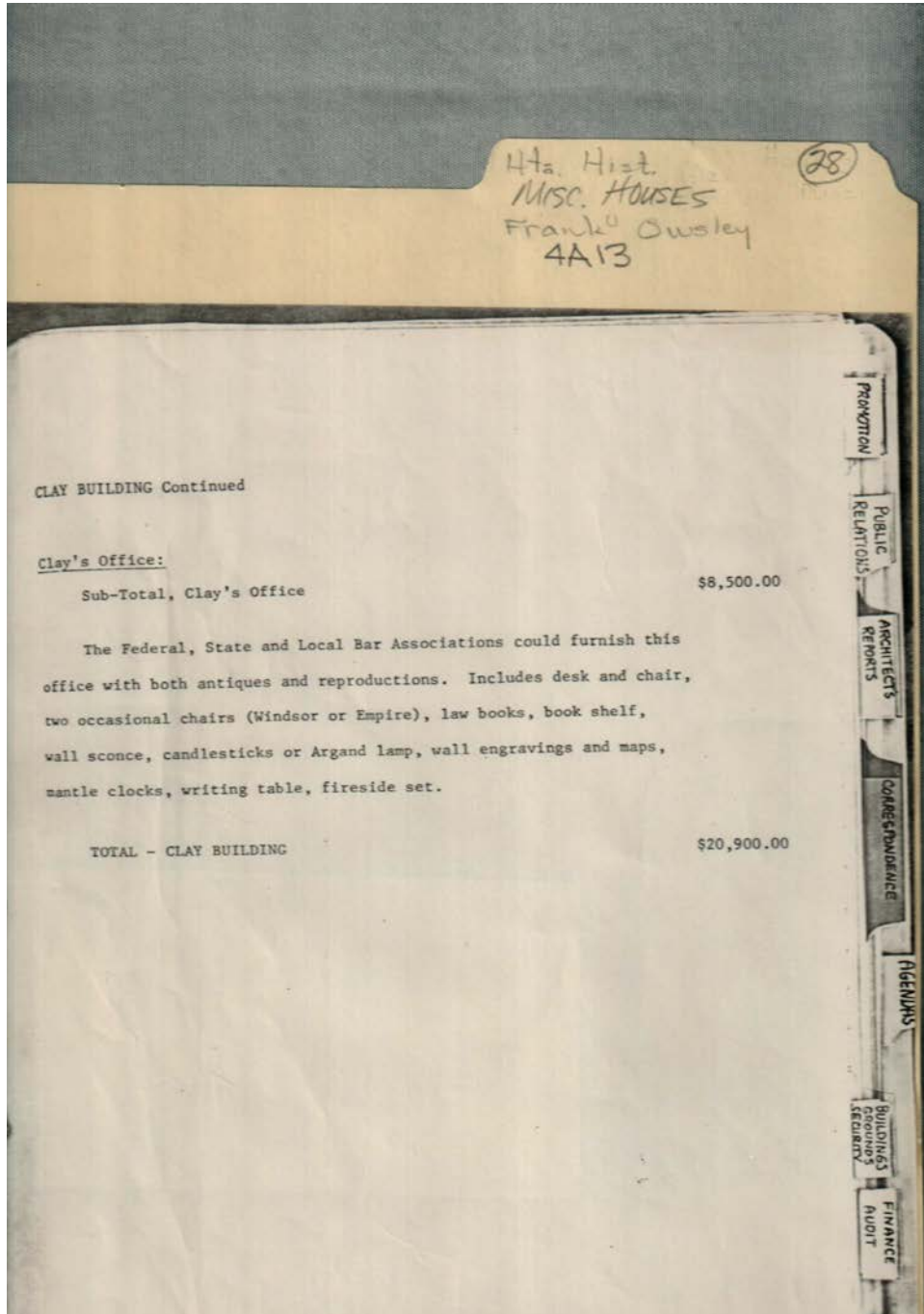
list



Frances Cabaniss Roberts Collection: Series 4, Subseries A, Box 13, Folder 28

Huntsville Houses, miscellaneous - Houses

Image 9 r04a13-28-000-0009 [Contents](#) [Index](#) [About](#)



**Names:**

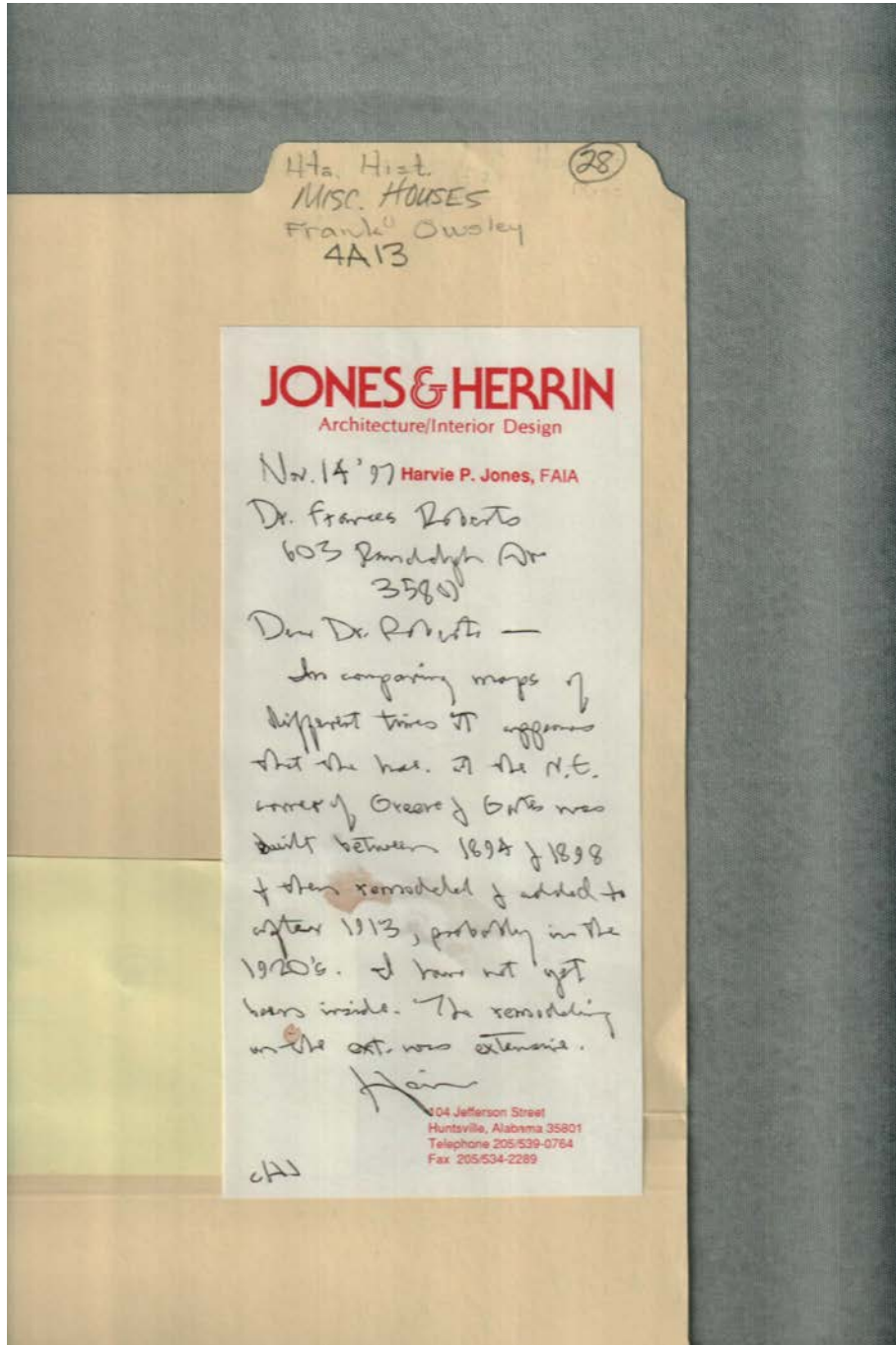
Clay Building

**Places:**

Huntsville, AL

**Types:**

document



**Names:**

Jones, Harvie P.

Roberts, Frances, Dr.

**Places:**

Huntsville, AL

**Types:**

correspondence

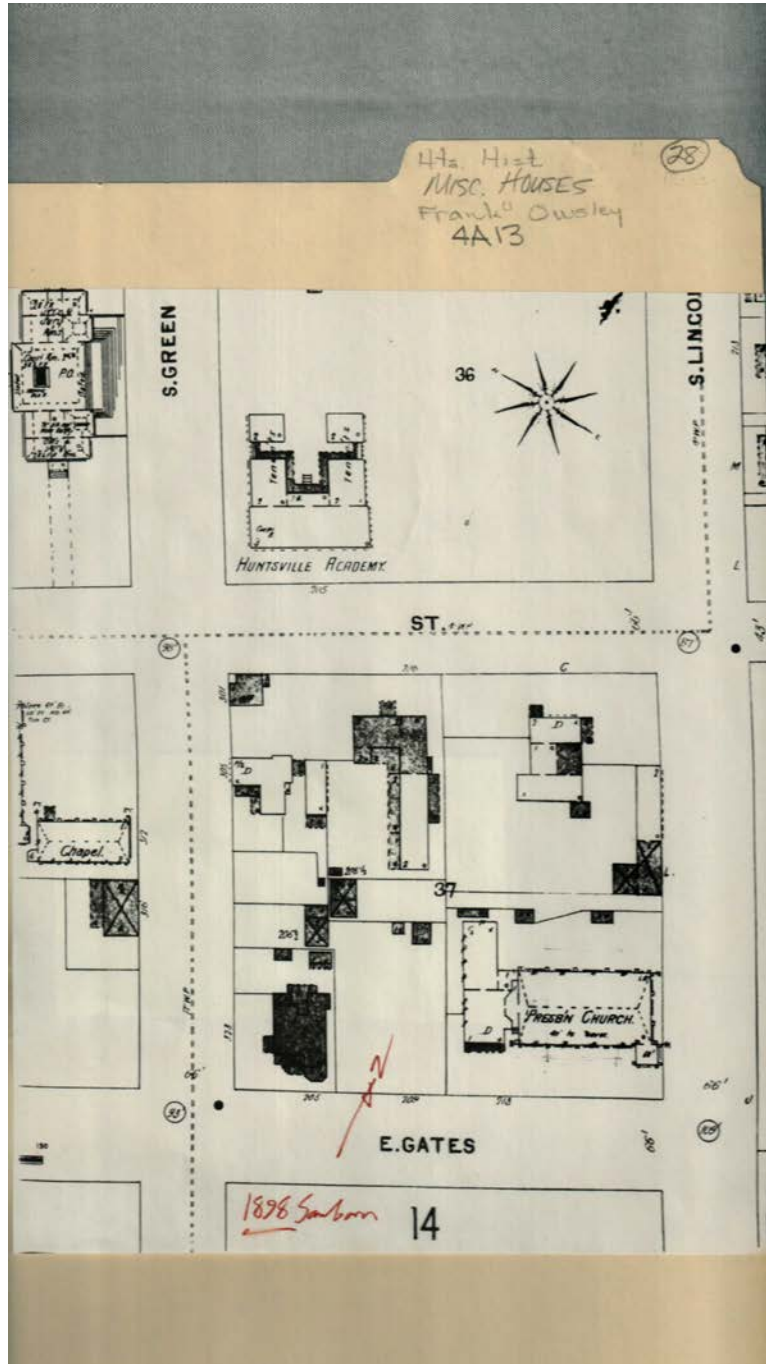
**Dates:**

Nov 14, 1997

Frances Cabaniss Roberts Collection: Series 4, Subseries A, Box 13, Folder 28

Huntsville Houses, miscellaneous - Houses

Image 11 r04a13-28-000-0011 [Contents](#) [Index](#) [About](#)



**Names:**

Sanborn map

**Places:**

Huntsville, AL

**Types:**

map

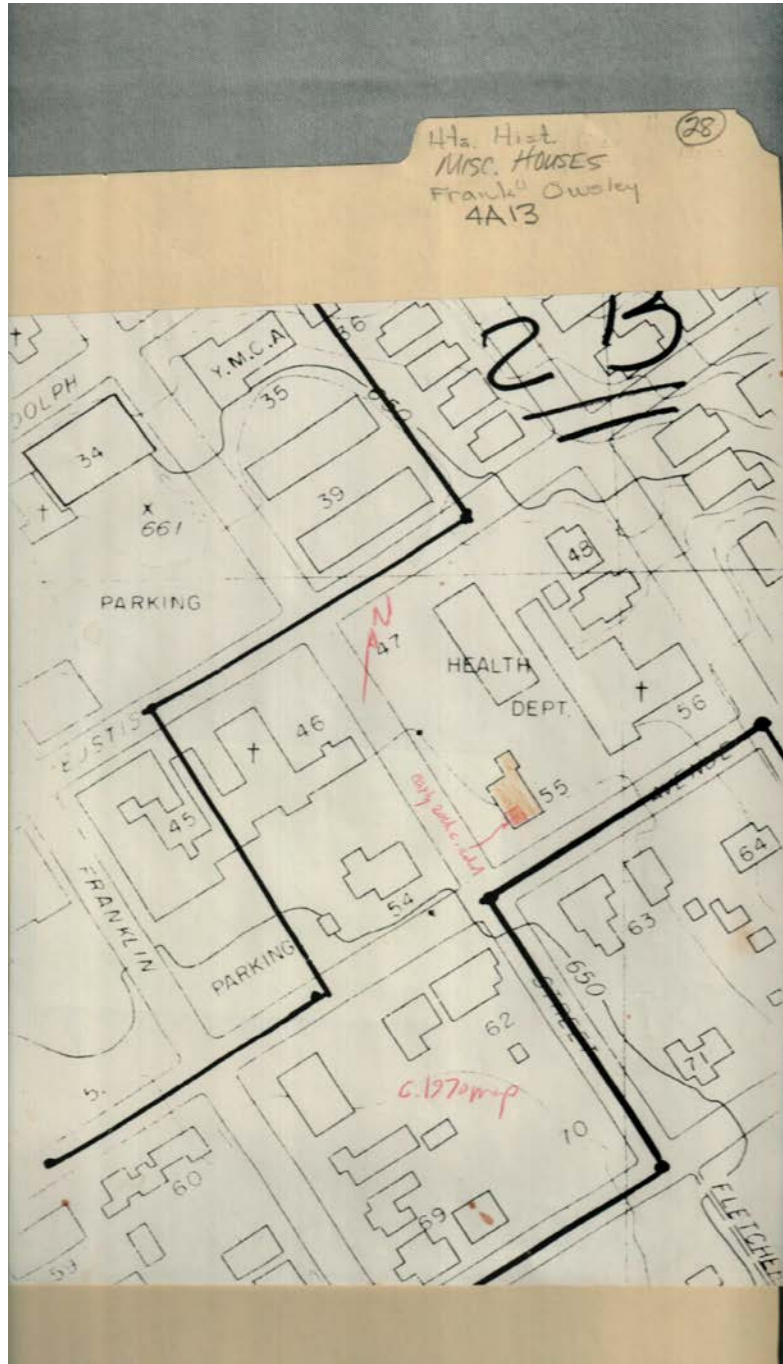
**Dates:**

1898

Frances Cabaniss Roberts Collection: Series 4, Subseries A, Box 13, Folder 28

Huntsville Houses, miscellaneous - Houses

Image 12 r04a13-28-000-0012 [Contents](#) [Index](#) [About](#)



**Names:**

Housing map

**Places:**

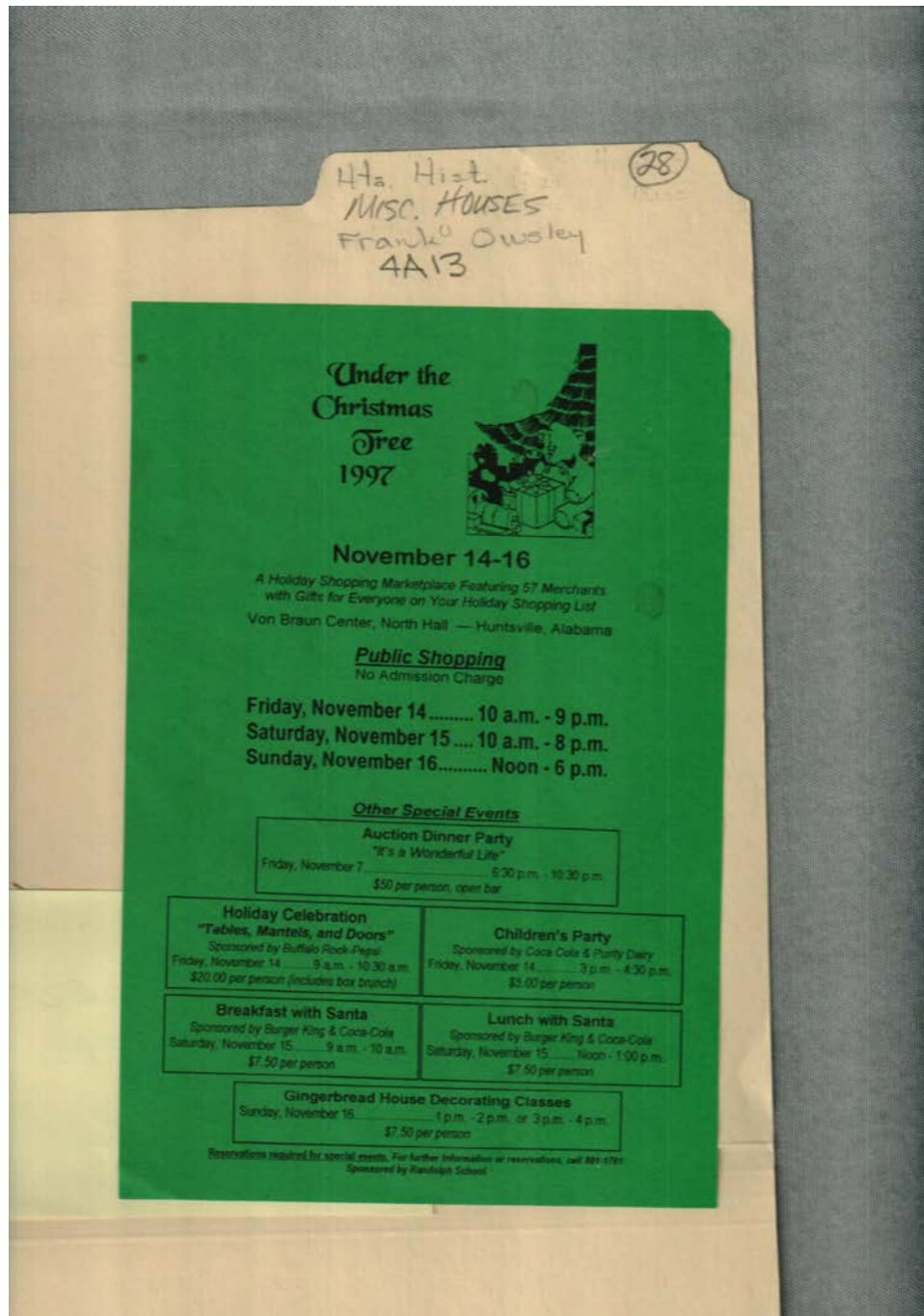
Huntsville, AL

**Types:**

map

**Dates:**

1970



**Names:**

Under the Christmas  
Tree

**Places:**

Huntsville, AL

**Types:**

advertisement

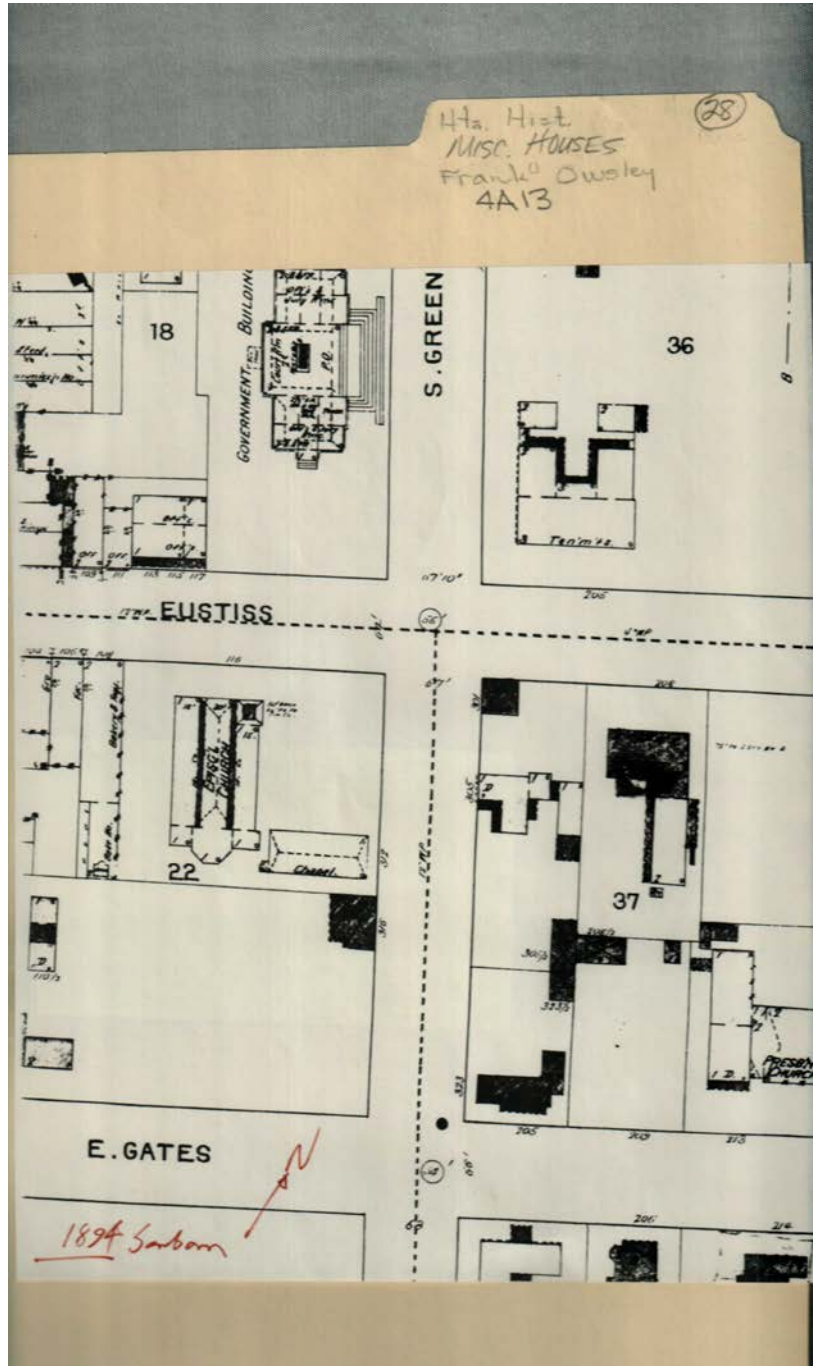
**Dates:**

Nov, 1997

Frances Cabaniss Roberts Collection: Series 4, Subseries A, Box 13, Folder 28

Huntsville Houses, miscellaneous - Houses

Image 14 r04a13-28-000-0014 [Contents](#) [Index](#) [About](#)



**Names:**

Sanborn map

**Places:**

Huntsville, AL

**Types:**

map

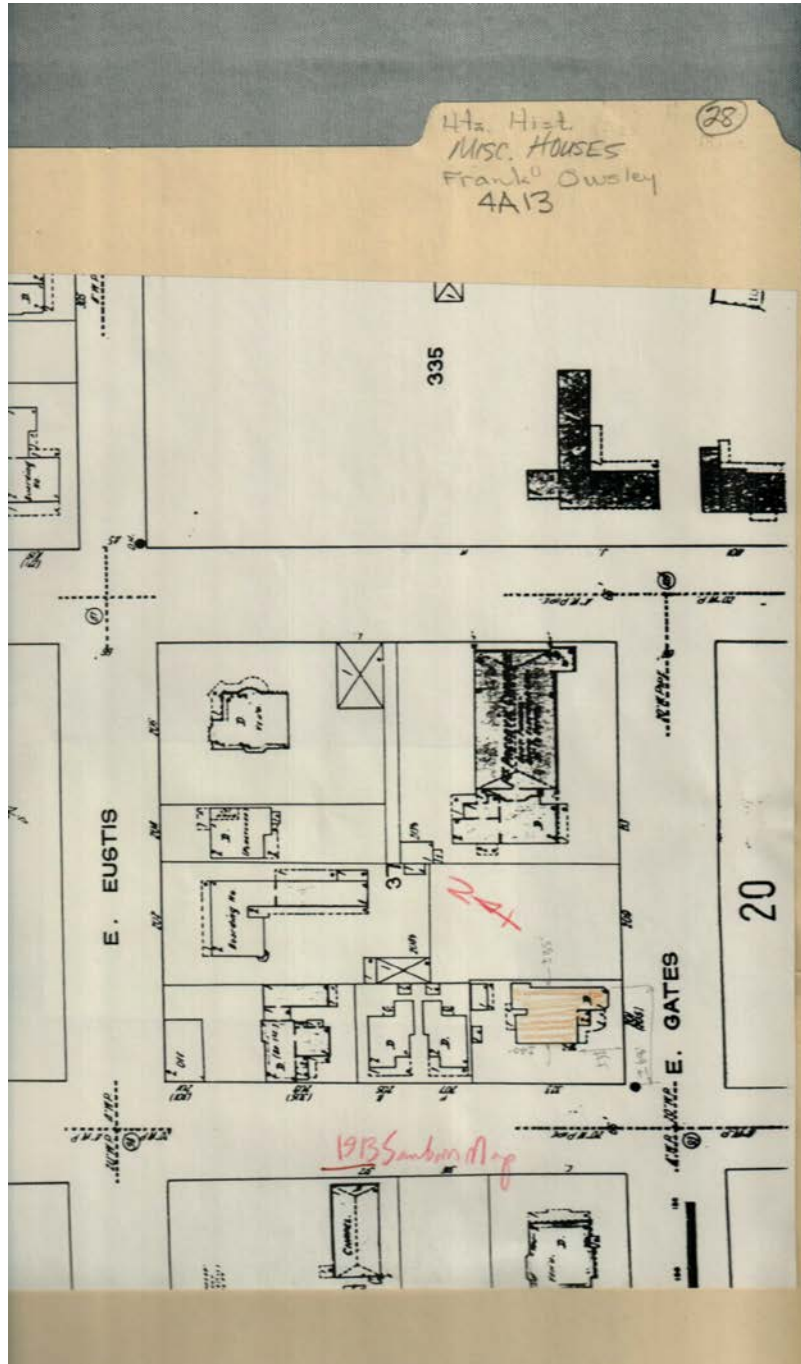
**Dates:**

1894

Frances Cabaniss Roberts Collection: Series 4, Subseries A, Box 13, Folder 28

Huntsville Houses, miscellaneous - Houses

Image 15 r04a13-28-000-0015 [Contents](#) [Index](#) [About](#)



**Names:**

Sanborn map

**Places:**

Huntsville, AL

**Types:**

map

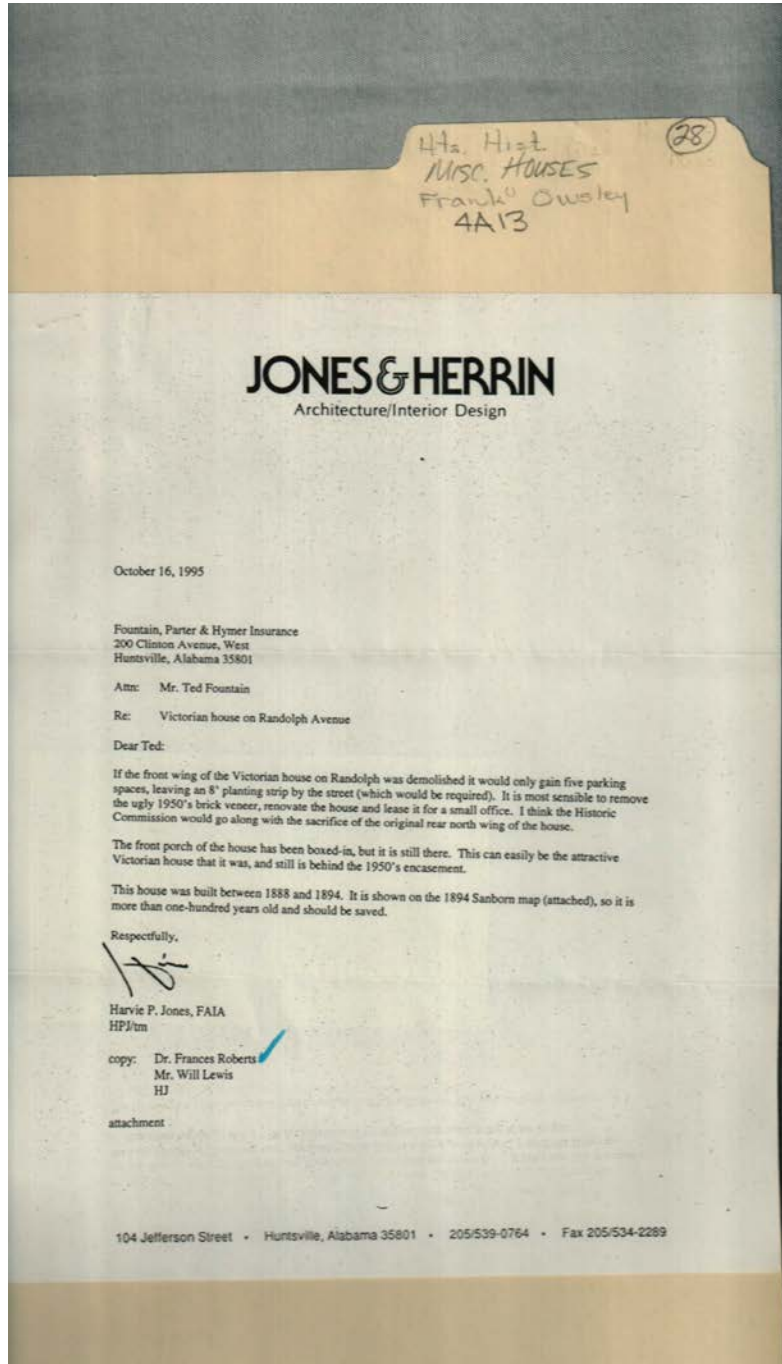
**Dates:**

1913

Frances Cabaniss Roberts Collection: Series 4, Subseries A, Box 13, Folder 28

Huntsville Houses, miscellaneous - Houses

Image 16 r04a13-28-000-0016 [Contents](#) [Index](#) [About](#)



**Names:**

Fountain, Parter &  
Hymer Insurance

Fountain, Ted  
Jones, Harvie P.

Lewis, Will  
Roberts, Frances, Dr.

**Places:**

Huntsville, AL

**Types:**

correspondence

**Dates:**

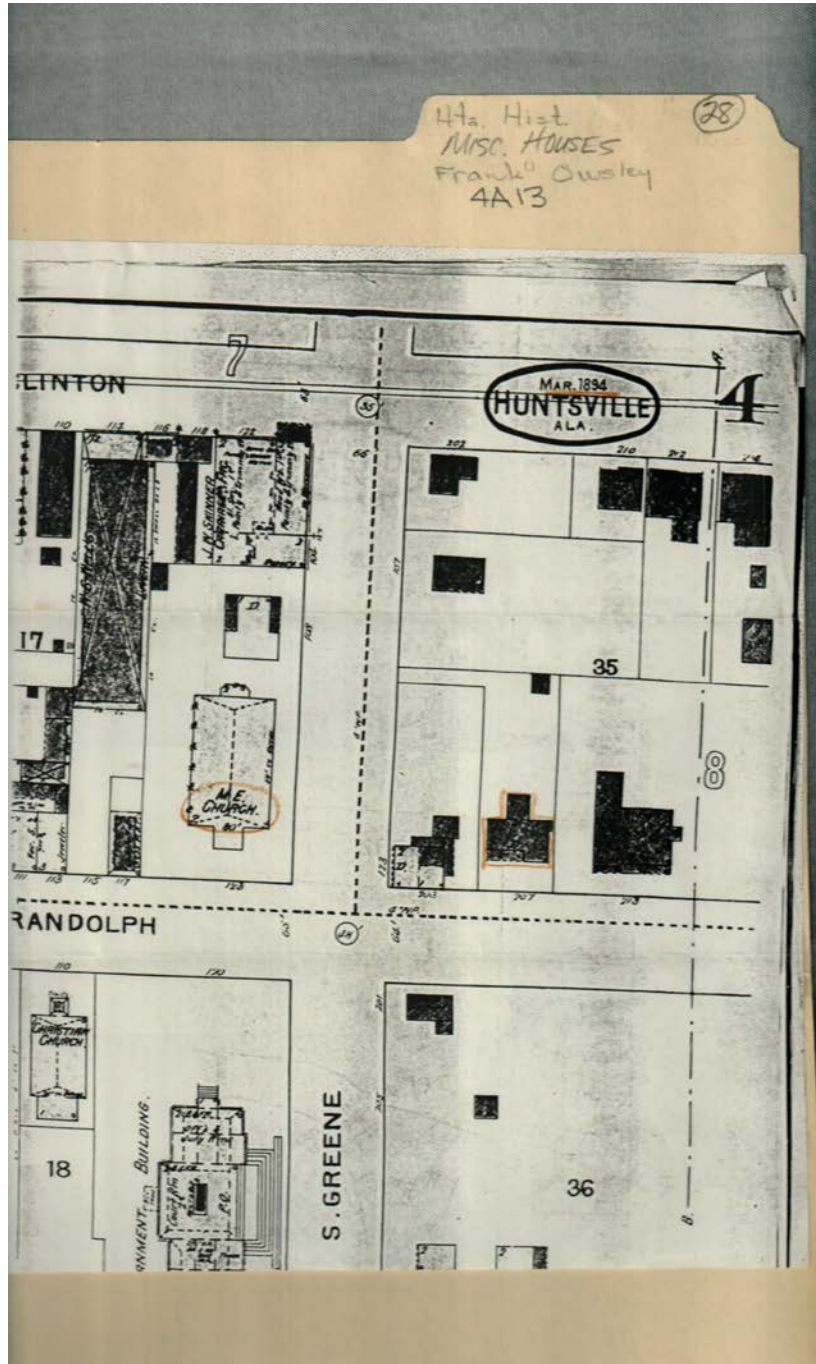
Oct 16, 1995



Frances Cabaniss Roberts Collection: Series 4, Subseries A, Box 13, Folder 28

Huntsville Houses, miscellaneous - Houses

Image 17 r04a13-28-000-0017 [Contents](#) [Index](#) [About](#)



**Names:**

Sanborn map

**Places:**

Huntsville, AL

**Types:**

map

**Dates:**

1894

**Frances Cabaniss Roberts Collection: Series 4, Subseries A, Box 13, Folder 28**

**Huntsville Houses, miscellaneous - Houses**

[Contents](#) [Index](#) [About](#)

**Table of Contents**

[Image 1](#) (r04a13-28-000-0001)

[Image 2](#) (r04a13-28-000-0002)

[Image 3](#) (r04a13-28-000-0003)

[Image 4](#) (r04a13-28-000-0004)

[Image 5](#) (r04a13-28-000-0005)

[Image 6](#) (r04a13-28-000-0006)

[Image 7](#) (r04a13-28-000-0007)

[Image 8](#) (r04a13-28-000-0008)

[Image 9](#) (r04a13-28-000-0009)

[Image 10](#) (r04a13-28-000-0010)

[Image 11](#) (r04a13-28-000-0011)

[Image 12](#) (r04a13-28-000-0012)

[Image 13](#) (r04a13-28-000-0013)

[Image 14](#) (r04a13-28-000-0014)

[Image 15](#) (r04a13-28-000-0015)

[Image 16](#) (r04a13-28-000-0016)

[Image 17](#) (r04a13-28-000-0017)

[Table of Contents](#)

[Name & Place Index](#)

[About the Collection](#)

**Frances Cabaniss Roberts Collection: Series 4, Subseries A, Box 13, Folder 28**

**Huntsville Houses, miscellaneous - Houses**

[Contents](#) [Index](#) [About](#)

**Name & Place Index**

Bouldin, Mary [4](#)  
Cabaniss, F. S., Register [4](#)  
Clay Building [9](#)  
Fearn, Mary Jane Walker [1](#)  
Fisk, Sara [7](#)  
Floyd, Warner [7](#)  
Fountain, Parter & Hymer Insurance [16](#)  
Fountain, Ted [16](#)  
George Steele Courthouse [7](#)  
Hartman, A. M. [4](#)  
Hartman, Emma [4](#)  
Hartman, Marie [4](#)  
Historic Houses in Madison County [8](#)  
Housing map [12](#)  
Howard Weeden House [7](#)  
Huntsville, AL [1](#), [2](#), [3](#), [4](#), [5](#), [6](#), [7](#), [9](#), [10](#), [11](#), [12](#), [13](#), [14](#),  
[15](#), [16](#), [17](#)  
Jones, Harvie P. [7](#), [10](#), [16](#)  
Jones, Lillian [3](#)  
Jones, Nannie J. [3](#)  
Jones, Raymond W. [4](#)  
Jones, William L. [3](#)  
Landman, George P. & Mary [3](#)  
Landman, George P. [5](#)  
Lewallen House [2](#)  
Lewallen, Jerilee [2](#)  
Lewallen, Tom [2](#)  
Lewis, Will [16](#)  
Madison Co., AL [8](#)  
Matkin, Elizabeth G. [4](#), [6](#)  
Mayhew, J. H. [4](#), [5](#)  
Montgomery, AL [7](#)  
Nashville, TN [1](#)  
Otey House [7](#)  
Otie House [7](#)  
Owsley, Frank L., Mrs. [1](#)  
Owsley, Harriet C. [1](#)  
Roberts, Frances, Dr. [7](#), [10](#), [16](#)  
Roberts, Frances [1](#)  
Sanborn map [11](#), [14](#), [15](#), [17](#)  
Taylor, Douglass [3](#)  
Taylor, Thomas J., Judge [6](#)  
Taylor, Thomas Jones [3](#), [5](#)  
Tennessee State Library and Archives [1](#)  
Under the Christmas Tree [13](#)  
Wall, Lillian T. [4](#)  
Wall, Lillian Taylor [6](#)  
Weeden, Howard, Miss [7](#)

# Frances Cabaniss Roberts Collection

**Preferred Citation:** Frances Cabaniss Roberts Collection, Archives and Special Collections, M. Louis Salmon Library, University of Alabama in Huntsville, Huntsville, AL.

**Collection Scope and Content:** The Collection of 114 Linear ft. includes a total of 156 Archival Boxes. The Frances Cabaniss Roberts collection covers the historical records of the Cabaniss Roberts family. This collection contains extensive correspondence records of the Cabaniss Roberts family circa 1830 to 1930.

**Archives/Special Collections Access Restrictions:** None

**Conditions Governing Use:** This material may be protected under U. S. Copyright Law (Title 17, U.S. Code) which governs the making of photocopies or reproductions of copyrighted materials. You may use the digitized material for private study, scholarship, or research. Though the University of Alabama in Huntsville Archives and Special Collections has physical ownership of the material in its collections, in some cases we may not own the copyright to the material. It is the patron's obligation to determine and satisfy copyright restrictions when publishing or otherwise distributing materials found in our collections.

**Provenance:** Gift of Johanna Shields on October 28, 2006.



THE UNIVERSITY OF  
ALABAMA IN HUNTSVILLE

**The UAH Archives and Special Collections  
M. Louis Salmon Library**