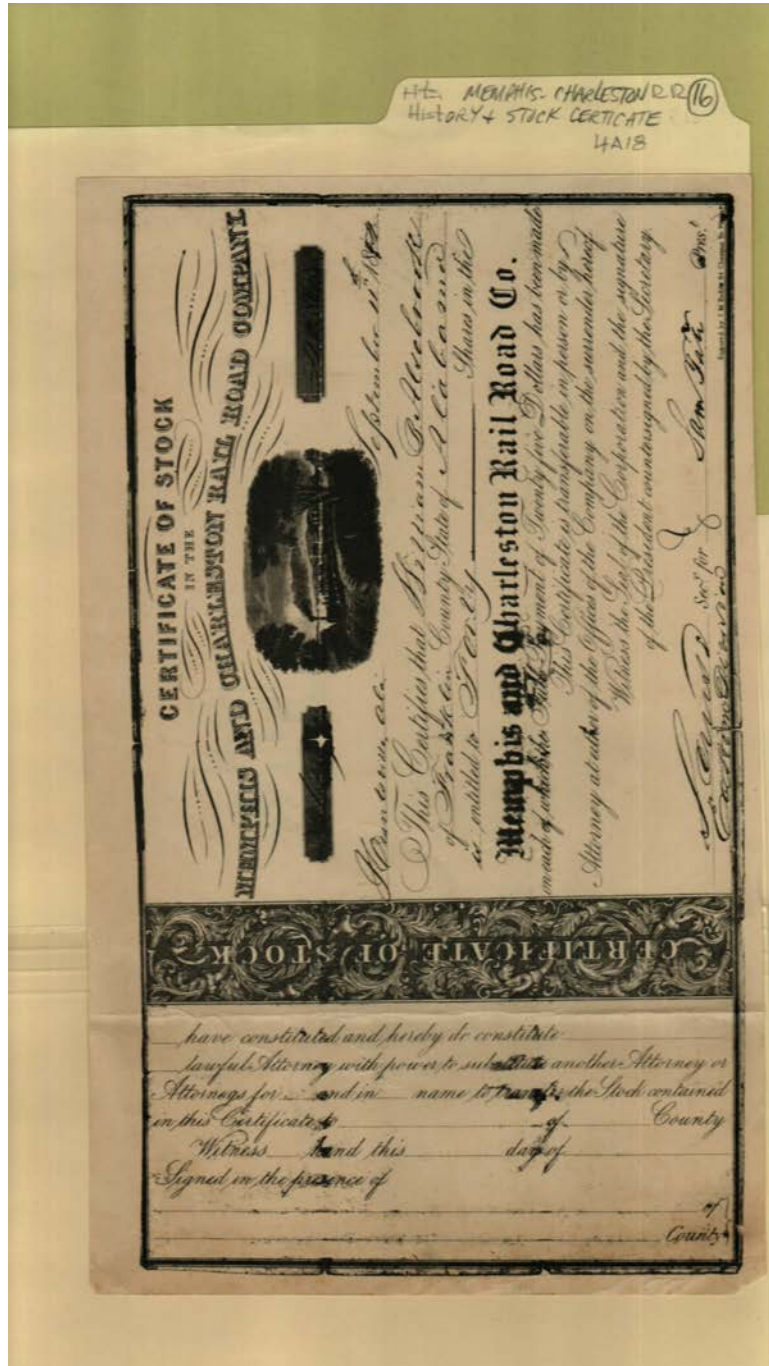


Frances Cabaniss Roberts Collection: Series 4, Subseries A, Box 18, Folder 16  
Memphis and Charleston Railroad Company Stock Certificate, Bldg. Reports by Gilliam, K, History, 1854,  
1974, 1857 - Railroads

Image 1 r04a18-16-000-0327 [Contents](#) [Index](#) [About](#)



**Names:**

Alvebrook, William  
B.

Memphis and  
Charleston RR

Tate, Sam

**Places:**

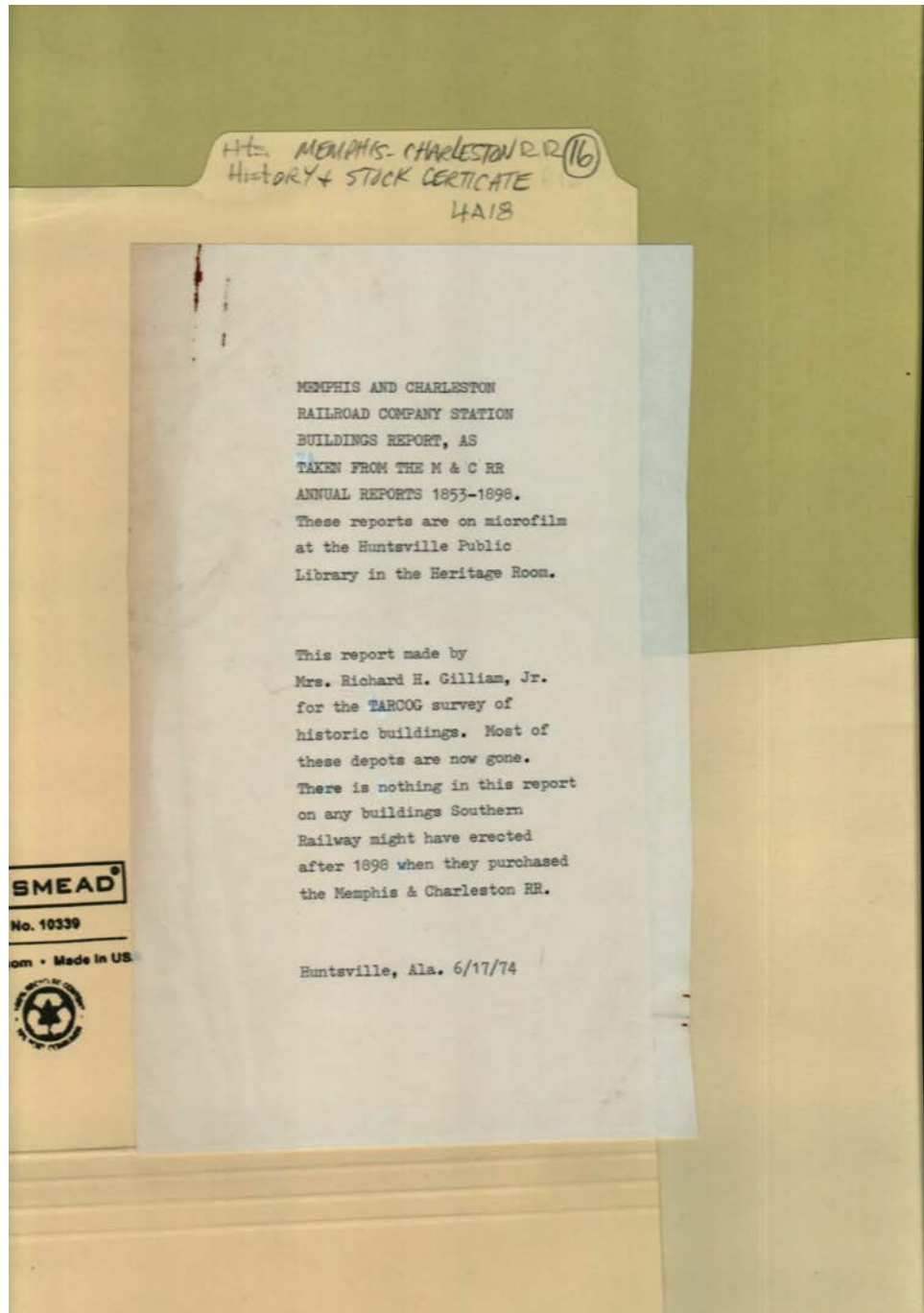
Huntsville, AL

**Types:**

certificate

**Dates:**

Sep 11, 1854



**Names:**

Building Report

Gilliam, Richard H,  
Jr., Mrs.

Heritage Room HPL  
TARCOG

**Places:**

Huntsville, AL

**Types:**

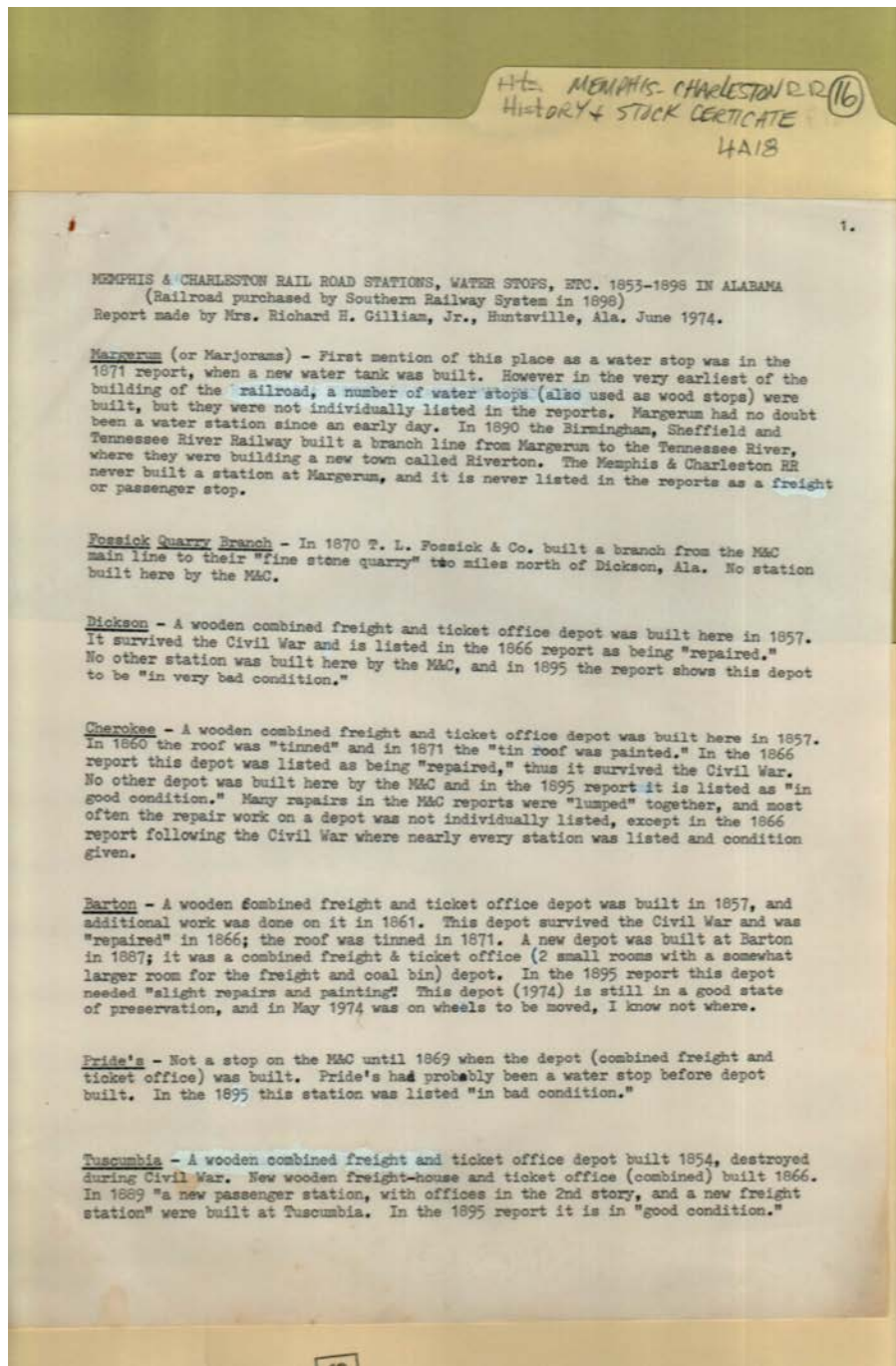
memo

**Dates:**

Jun 17, 1974

Frances Cabaniss Roberts Collection: Series 4, Subseries A, Box 18, Folder 16  
 Memphis and Charleston Railroad Company Stock Certificate, Bldg. Reports by Gilliam, K, History, 1854,  
 1974, 1857 - Railroads

Image 3 r04a18-16-000-0329 [Contents](#) [Index](#) [About](#)



**Names:**

Barton	Fossick Quarry	M & C Rail Road	Margerum
Cherokee	Branch	Stations	Pride's
Dickson	Gilliam, Richard H, Jr., Mrs.	M & C Water Stops, etc	Tuscumbia

**Places:**

Huntsville, AL

**Types:**

list

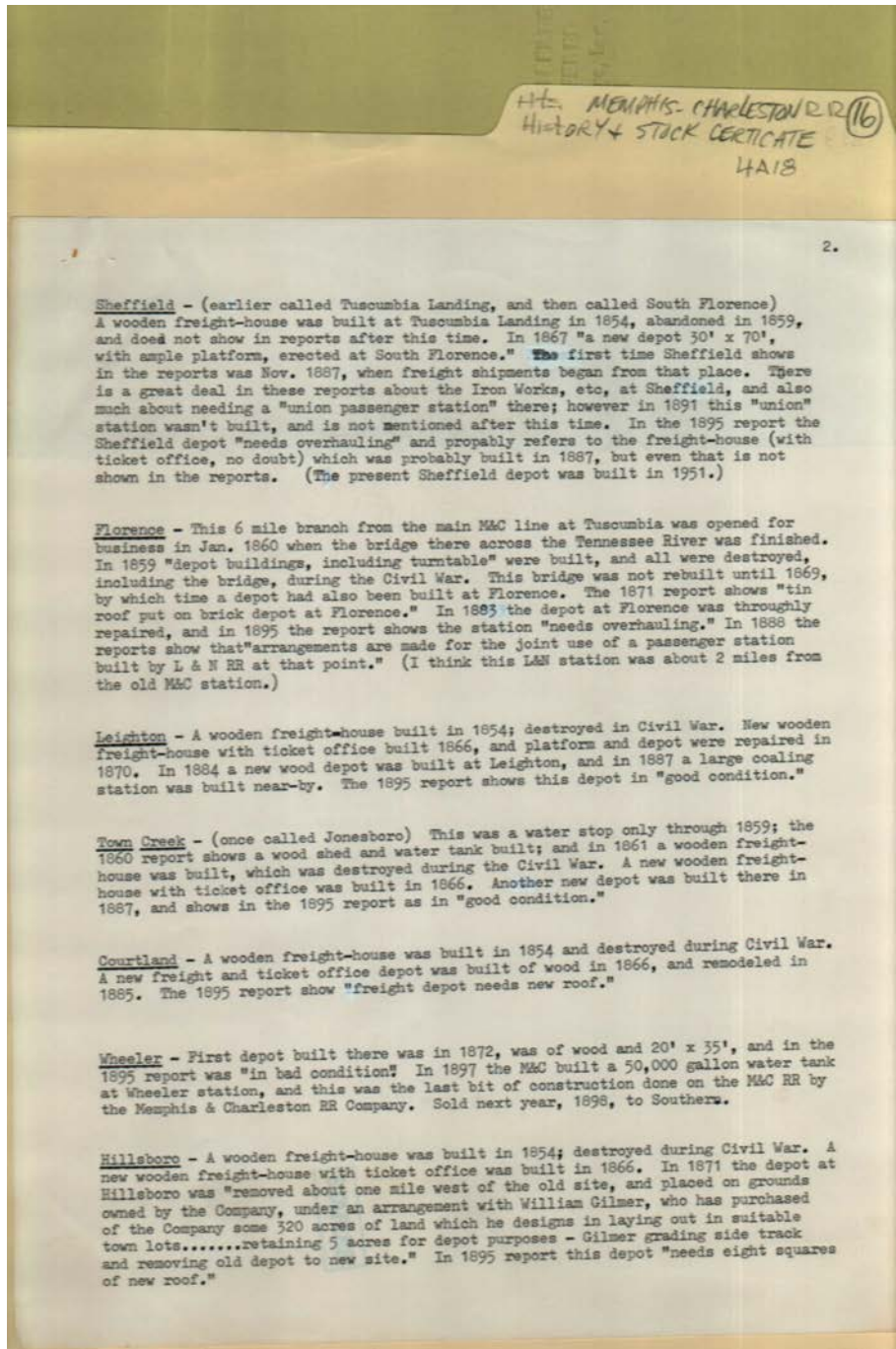
**Dates:**

Jun 1974





Frances Cabaniss Roberts Collection: Series 4, Subseries A, Box 18, Folder 16  
 Memphis and Charleston Railroad Company Stock Certificate, Bldg. Reports by Gilliam, K, History, 1854,  
 1974, 1857 - Railroads  
 Image 4 r04a18-16-000-0330 [Contents](#) [Index](#) [About](#)



**Names:**

Courtland  
 Florence

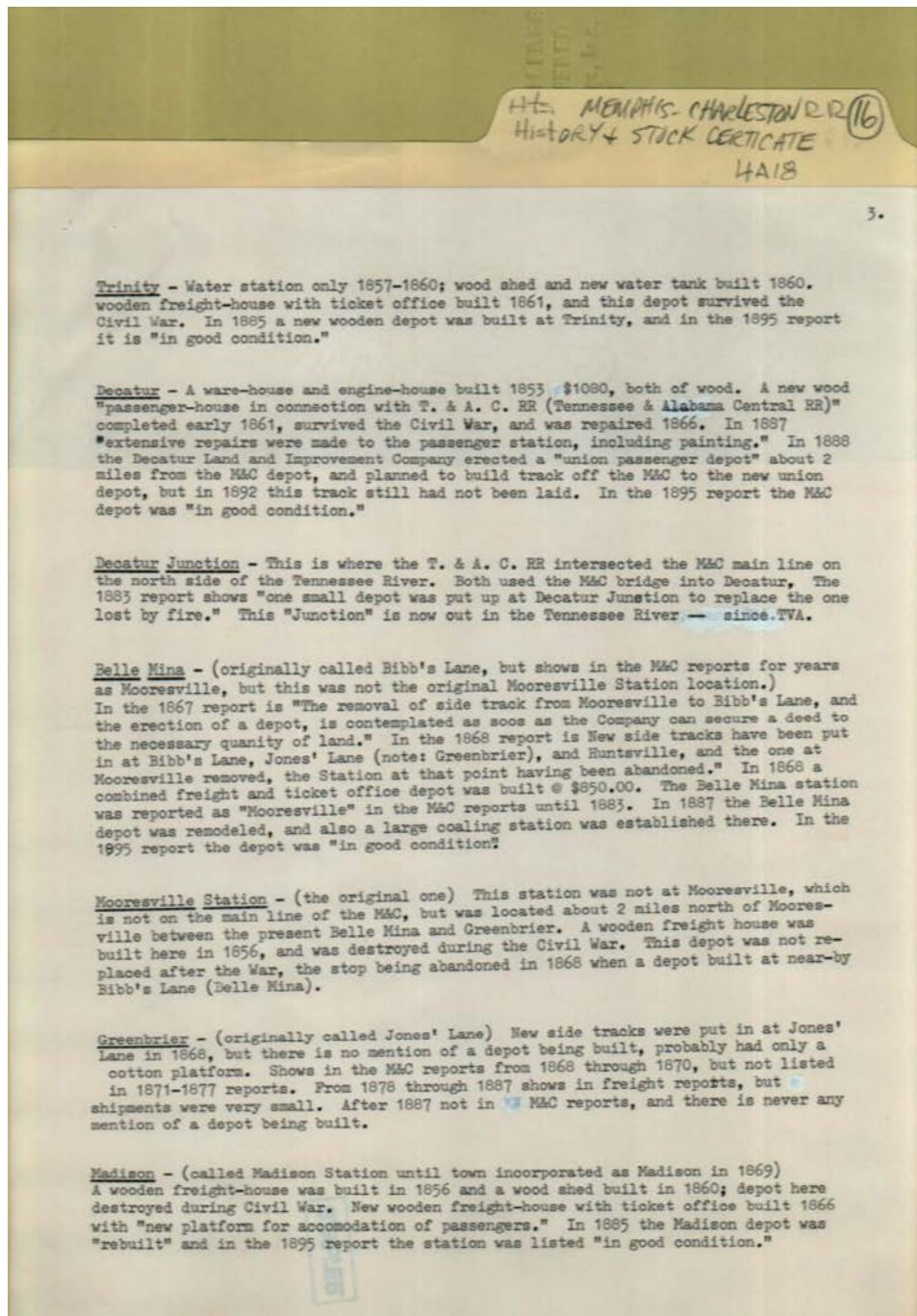
Hillsboro  
 Leighton

Sheffield  
 Town Creek

Wheeler

**Types:**

list



**Names:**

Belle Mina  
 Decatur

Decatur Junction  
 Greenbrier

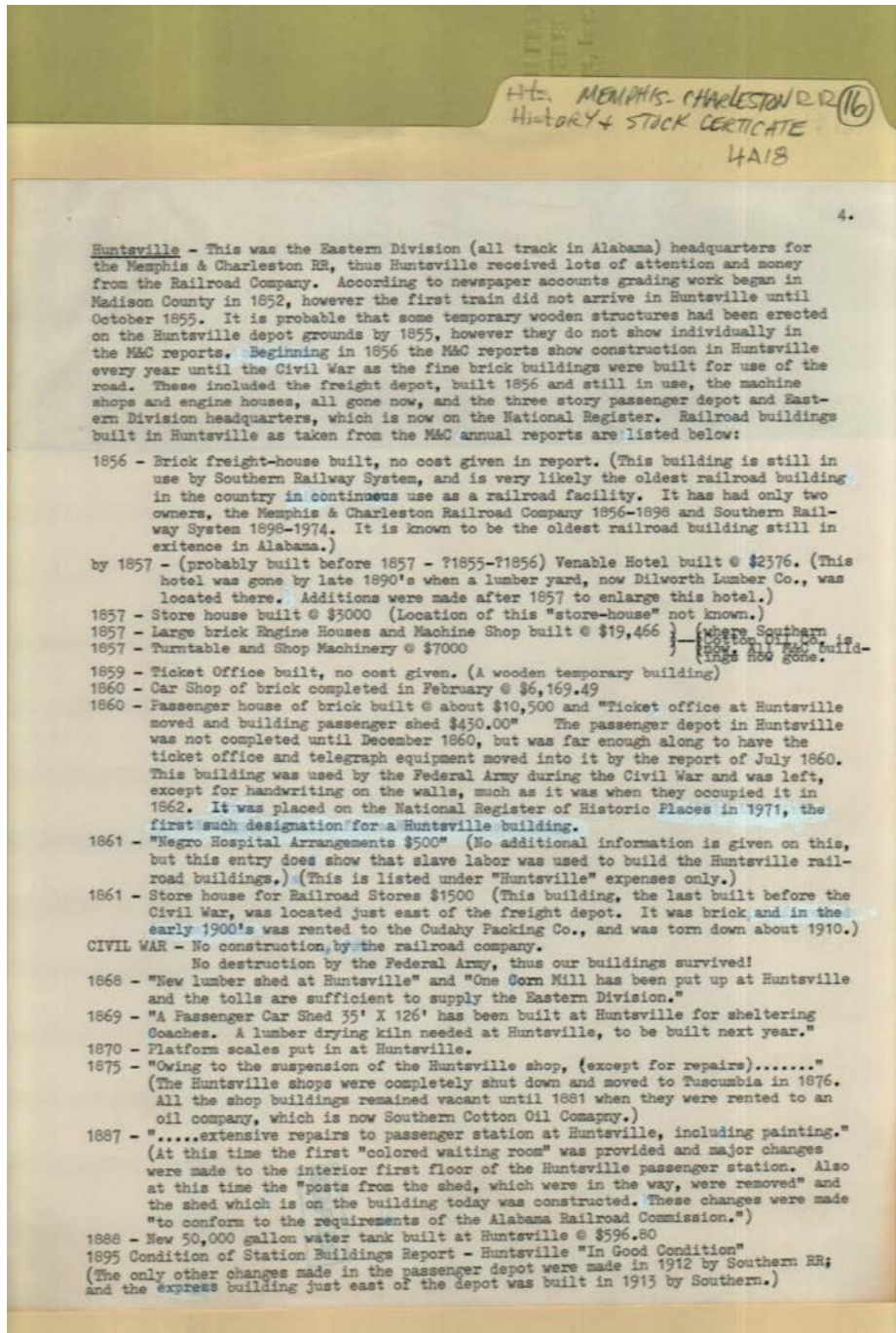
Madison  
 Mooresville Station

Trinity

**Types:**

list



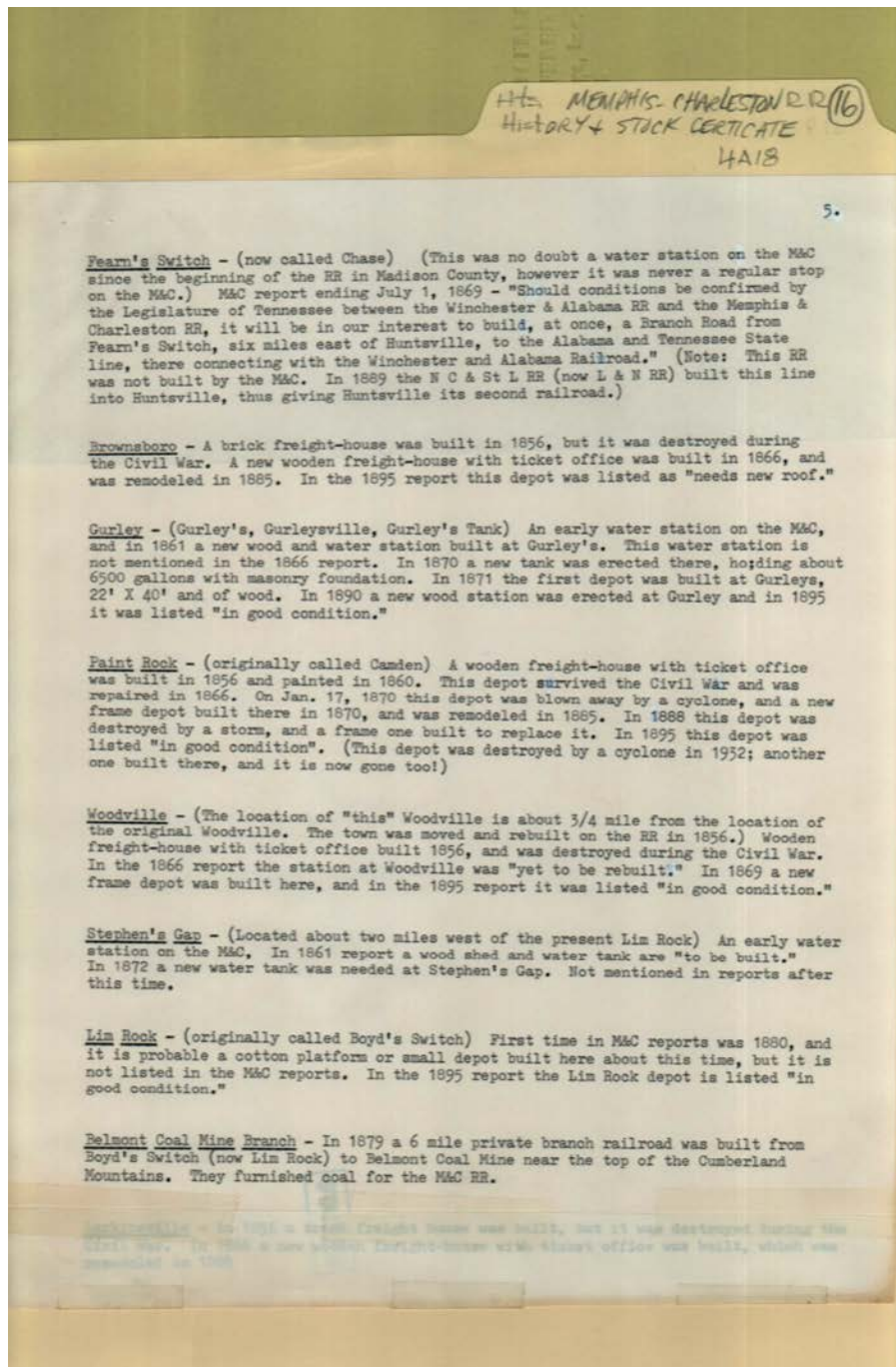


**Names:**  
 Huntsville

**Types:**  
 list

Frances Cabaniss Roberts Collection: Series 4, Subseries A, Box 18, Folder 16  
Memphis and Charleston Railroad Company Stock Certificate, Bldg. Reports by Gilliam, K, History, 1854,  
1974, 1857 - Railroads

Image 7 r04a18-16-000-0333 [Contents](#) [Index](#) [About](#)



**Names:**

Belmont Coal Mine  
Branch  
Brownsboro

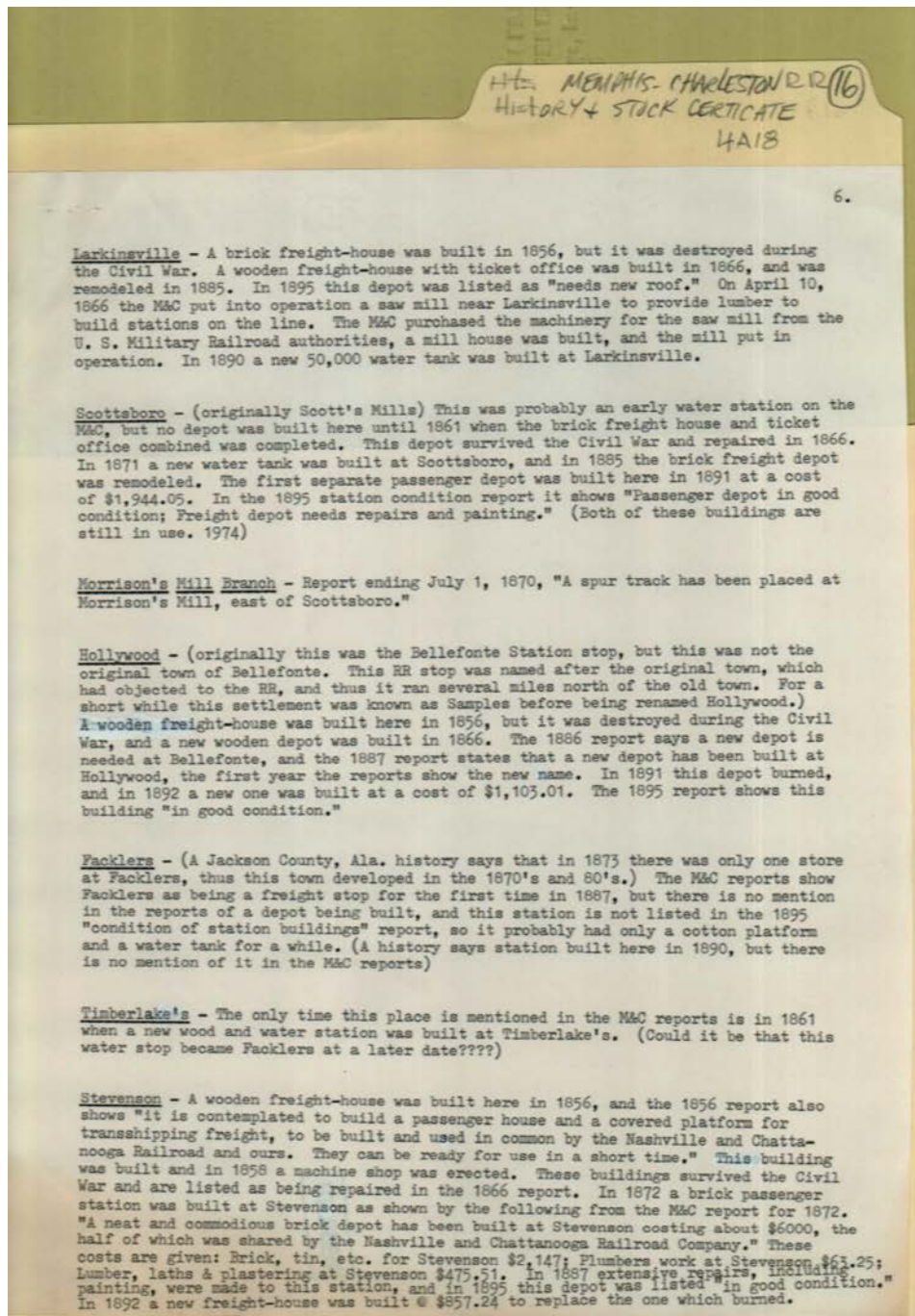
Fearn's Switch  
Gurley  
Lim Rock

Paint Rock  
Stephen's Gap  
Woodville

**Types:**

list





**Names:**

Facklers  
Hollywood  
Larkinsville

Morrison's Mill  
Branch  
Scottsboro

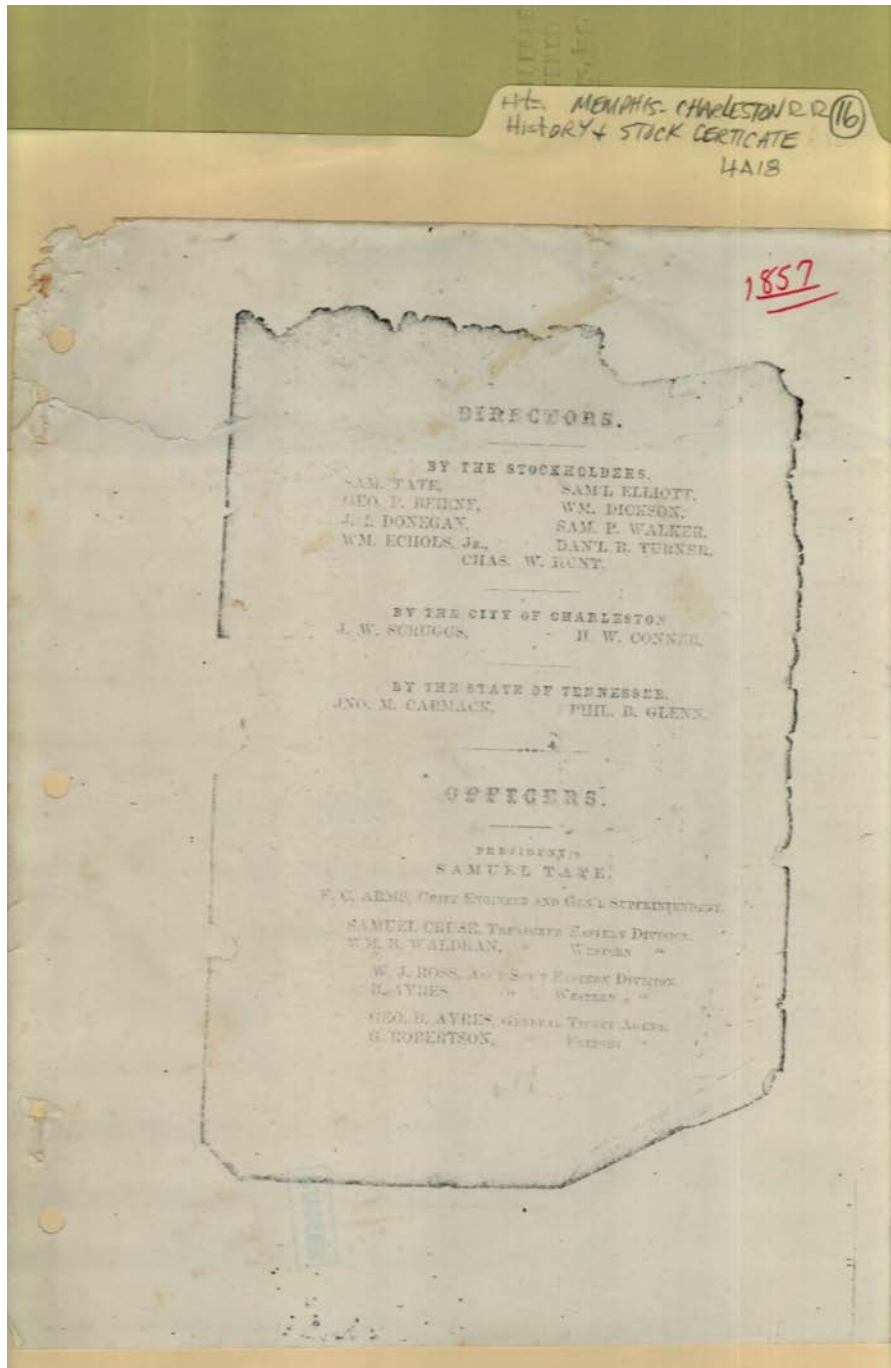
Stevenson  
Timberlake's

**Types:**

list

Frances Cabaniss Roberts Collection: Series 4, Subseries A, Box 18, Folder 16  
Memphis and Charleston Railroad Company Stock Certificate, Bldg. Reports by Gilliam, K, History, 1854,  
1974, 1857 - Railroads

Image 9 r04a18-16-000-0335 [Contents](#) [Index](#) [About](#)



**Names:**

Arms, F. C.  
Ayres, George B.  
Ayres, R.  
Beirne, George P.  
Carmack, John M.  
Conner, H. W.

Cruse, Samuel  
Dickson, William  
Donegan, J. L.  
Echols, William, Jr.  
Elliott, Samuel  
Glenn, Phil B.

Hunt, Charles W.  
M & C Directors  
Robertson, G.  
Ross, W. J.  
Scruggs, J. W.  
Tate, Sam

Turner, Daniel B.  
Waldran, W. M. B.  
Walker, Samuel P.

**Types:**

page

**Dates:**

1857

**Frances Cabaniss Roberts Collection: Series 4, Subseries A, Box 18, Folder 16**  
**Memphis and Charleston Railroad Company Stock Certificate, Bldg. Reports by Gilliam, K, History, 1854, 1974, 1857 - Railroads**

[Contents](#) [Index](#) [About](#)

## Table of Contents

[Image 1](#) (r04a18-16-000-0327)

[Image 2](#) (r04a18-16-000-0328)

[Image 3](#) (r04a18-16-000-0329)

[Image 4](#) (r04a18-16-000-0330)

[Image 5](#) (r04a18-16-000-0331)

[Image 6](#) (r04a18-16-000-0332)

[Image 7](#) (r04a18-16-000-0333)

[Image 8](#) (r04a18-16-000-0334)

[Image 9](#) (r04a18-16-000-0335)

[Table of Contents](#)

[Name & Place Index](#)

[About the Collection](#)



**Frances Cabaniss Roberts Collection: Series 4, Subseries A, Box 18, Folder 16**  
**Memphis and Charleston Railroad Company Stock Certificate, Bldg. Reports by Gilliam, K, History, 1854,**  
**1974, 1857 - Railroads**

[Contents](#) [Index](#) [About](#)

## **Name & Place Index**

Alvebrook, William B. [1](#)  
Arms, F. C. [9](#)  
Ayres, George B. [9](#)  
Ayres, R. [9](#)  
Barton [3](#)  
Beirne, George P. [9](#)  
Belle Mina [5](#)  
Belmont Coal Mine Branch [7](#)  
Brownsboro [7](#)  
Building Report [2](#)  
Carmack, John M. [9](#)  
Cherokee [3](#)  
Conner, H. W. [9](#)  
Courtland [4](#)  
Cruse, Samuel [9](#)  
Decatur Junction [5](#)  
Decatur [5](#)  
Dickson, William [9](#)  
Dickson [3](#)  
Donegan, J. L. [9](#)  
Echols, William, Jr. [9](#)  
Elliott, Samuel [9](#)  
Facklers [8](#)  
Fearn's Switch [7](#)  
Florence [4](#)  
Fossick Quarry Branch [3](#)  
Gilliam, Richard H, Jr., Mrs. [2](#), [3](#)  
Glenn, Phil B. [9](#)  
Greenbrier [5](#)  
Gurley [7](#)  
Heritage Room HPL [2](#)  
Hillsboro [4](#)  
Hollywood [8](#)  
Hunt, Charles W. [9](#)  
Huntsville, AL [1](#), [2](#), [3](#)  
Huntsville [6](#)  
Larkinsville [8](#)  
Leighton [4](#)  
Lim Rock [7](#)  
M & C Directors [9](#)  
M & C Rail Road Stations [3](#)  
M & C Water Stops, etc [3](#)  
Madison [5](#)  
Margerum [3](#)  
Memphis and Charleston RR [1](#)  
Mooresville Station [5](#)  
Morrison's Mill Branch [8](#)  
Paint Rock [7](#)  
Pride's [3](#)  
Robertson, G. [9](#)  
Ross, W. J. [9](#)  
Scottsboro [8](#)  
Scruggs, J. W. [9](#)  
Sheffield [4](#)  
Stephen's Gap [7](#)  
Stevenson [8](#)  
TARCOG [2](#)  
Tate, Sam [1](#), [9](#)  
Timberlake's [8](#)  
Town Creek [4](#)  
Trinity [5](#)  
Turner, Daniel B. [9](#)  
Tuscumbia [3](#)  
Waldran, W. M. B. [9](#)  
Walker, Samuel P. [9](#)  
Wheeler [4](#)  
Woodville [7](#)

# Frances Cabaniss Roberts Collection

**Preferred Citation:** Frances Cabaniss Roberts Collection, Archives and Special Collections, M. Louis Salmon Library, University of Alabama in Huntsville, Huntsville, AL.

**Collection Scope and Content:** The Collection of 114 Linear ft. includes a total of 156 Archival Boxes. The Frances Cabaniss Roberts collection covers the historical records of the Cabaniss Roberts family. This collection contains extensive correspondence records of the Cabaniss Roberts family circa 1830 to 1930.

**Archives/Special Collections Access Restrictions:** None

**Conditions Governing Use:** This material may be protected under U. S. Copyright Law (Title 17, U.S. Code) which governs the making of photocopies or reproductions of copyrighted materials. You may use the digitized material for private study, scholarship, or research. Though the University of Alabama in Huntsville Archives and Special Collections has physical ownership of the material in its collections, in some cases we may not own the copyright to the material. It is the patron's obligation to determine and satisfy copyright restrictions when publishing or otherwise distributing materials found in our collections.

**Provenance:** Gift of Johanna Shields on October 28, 2006.



THE UNIVERSITY OF  
ALABAMA IN HUNTSVILLE

**The UAH Archives and Special Collections  
M. Louis Salmon Library**