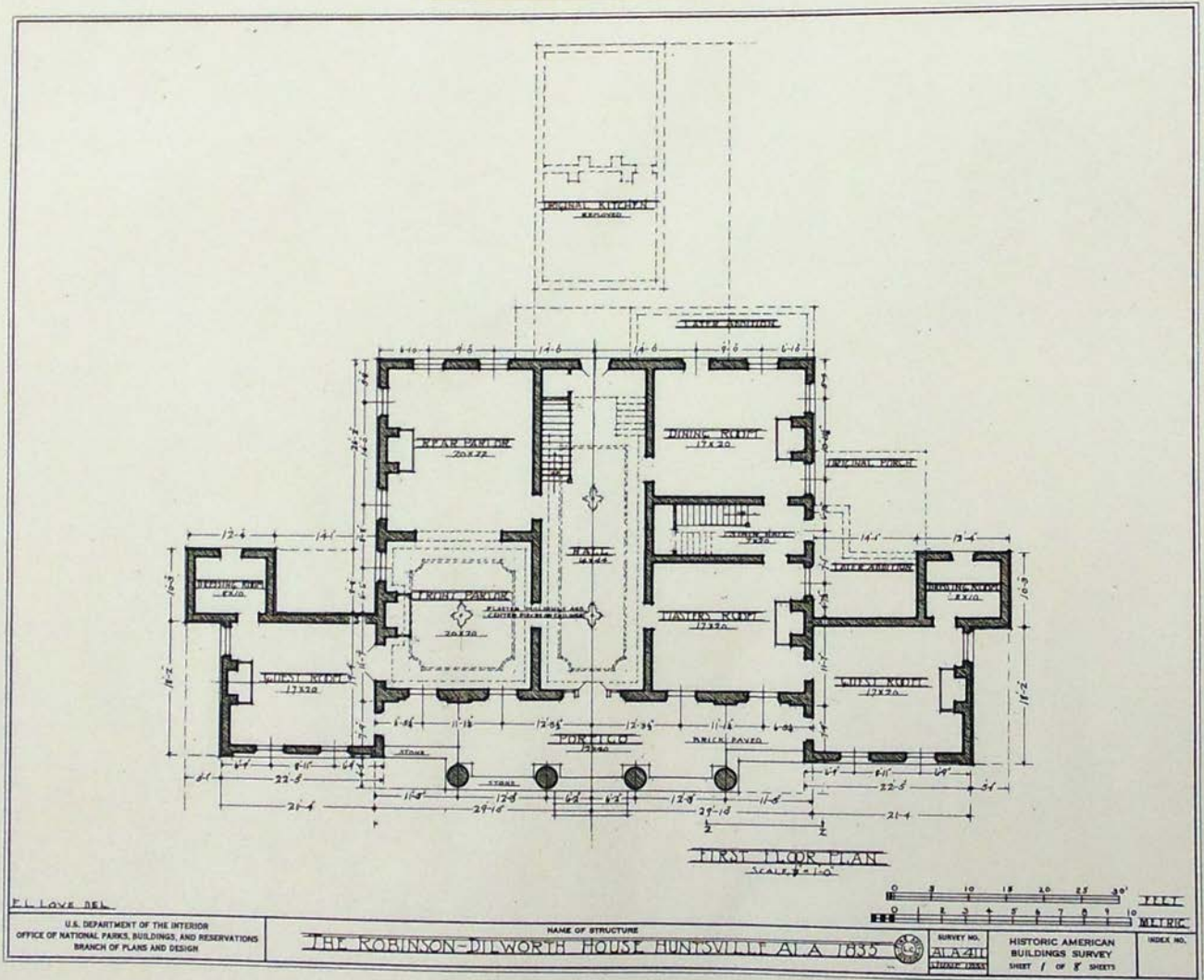


UAH Roberts Collection
4A21, Item 3



Names:

First Floor Plan

Robinson - Dilworth
House

Places:

Huntsville, AL

Types:

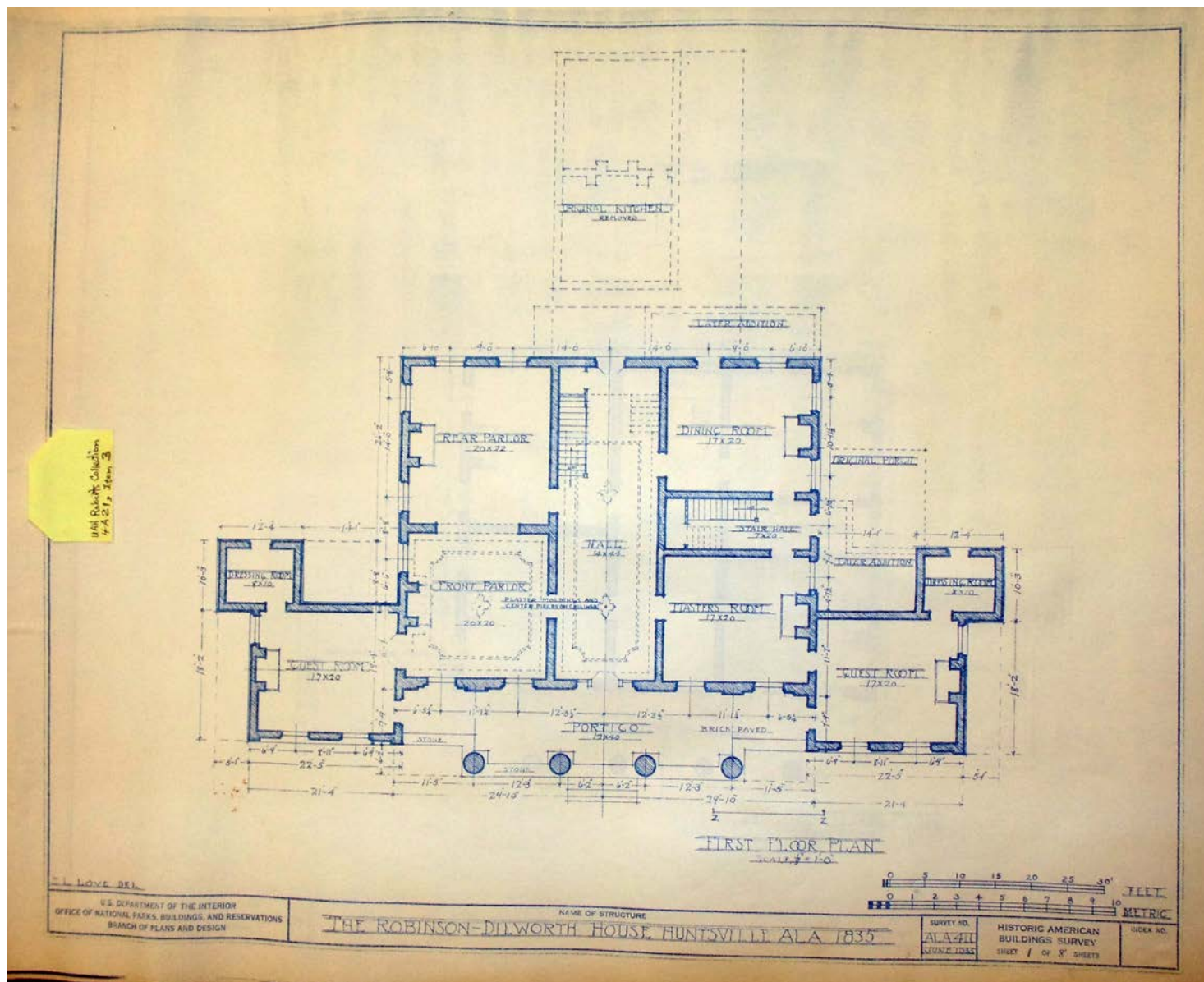
blueprint

Dates:

June 1935

Robinson/Dilworth House Blueprint, 1935

Image 2 r04a21-00-003-5398 [Contents](#) [Index](#) [About](#)



Names:

First Floor Plan

Robinson - Dilworth House

Places:

Huntsville, AL

Types:

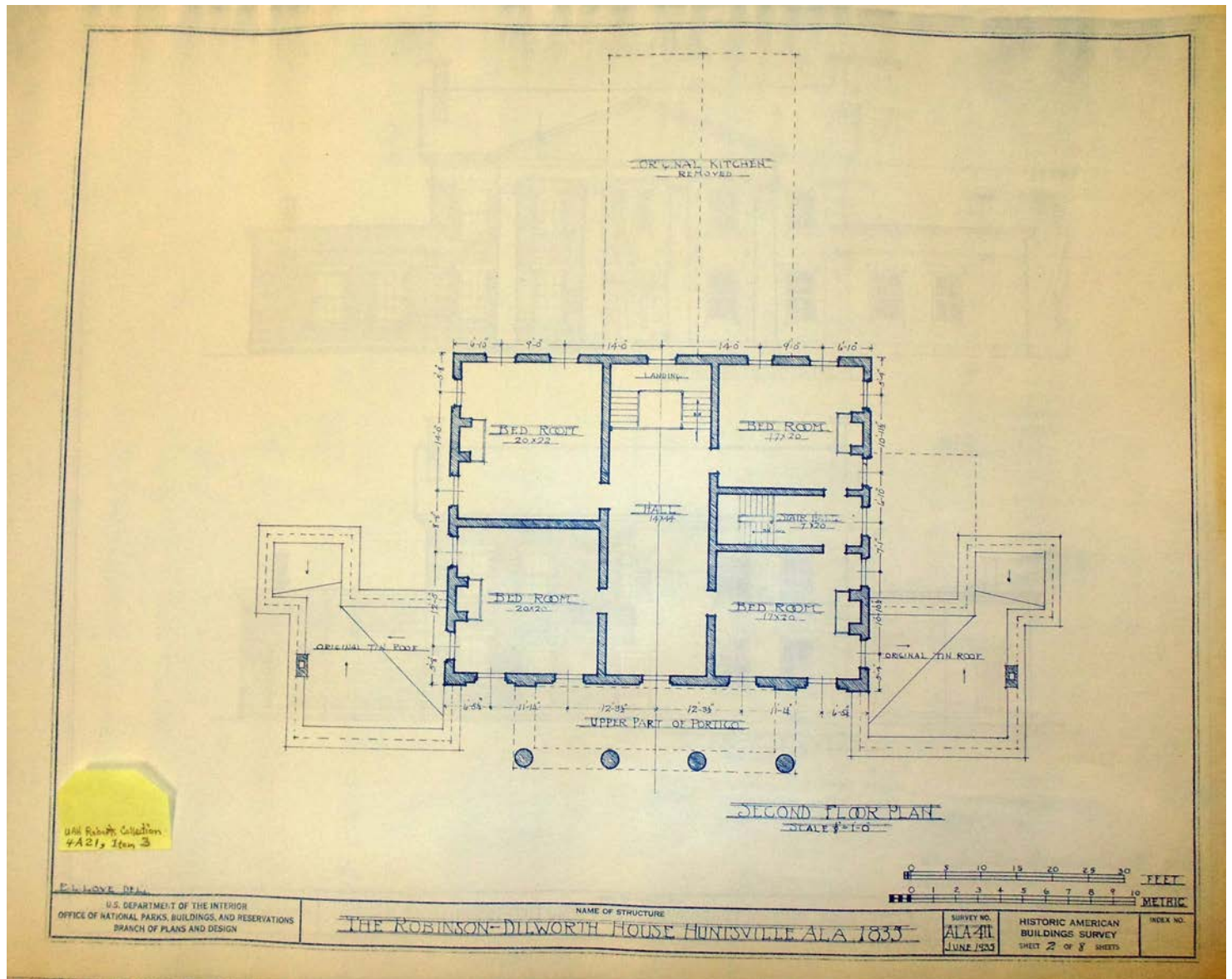
blueprint

Dates:

June 1935

Robinson/Dilworth House Blueprint, 1935

Image 3 r04a21-00-003-5399 [Contents](#) [Index](#) [About](#)



Robinson - Dilworth House

Names:

Second Floor Plan

Places:

Huntsville, AL

Types:

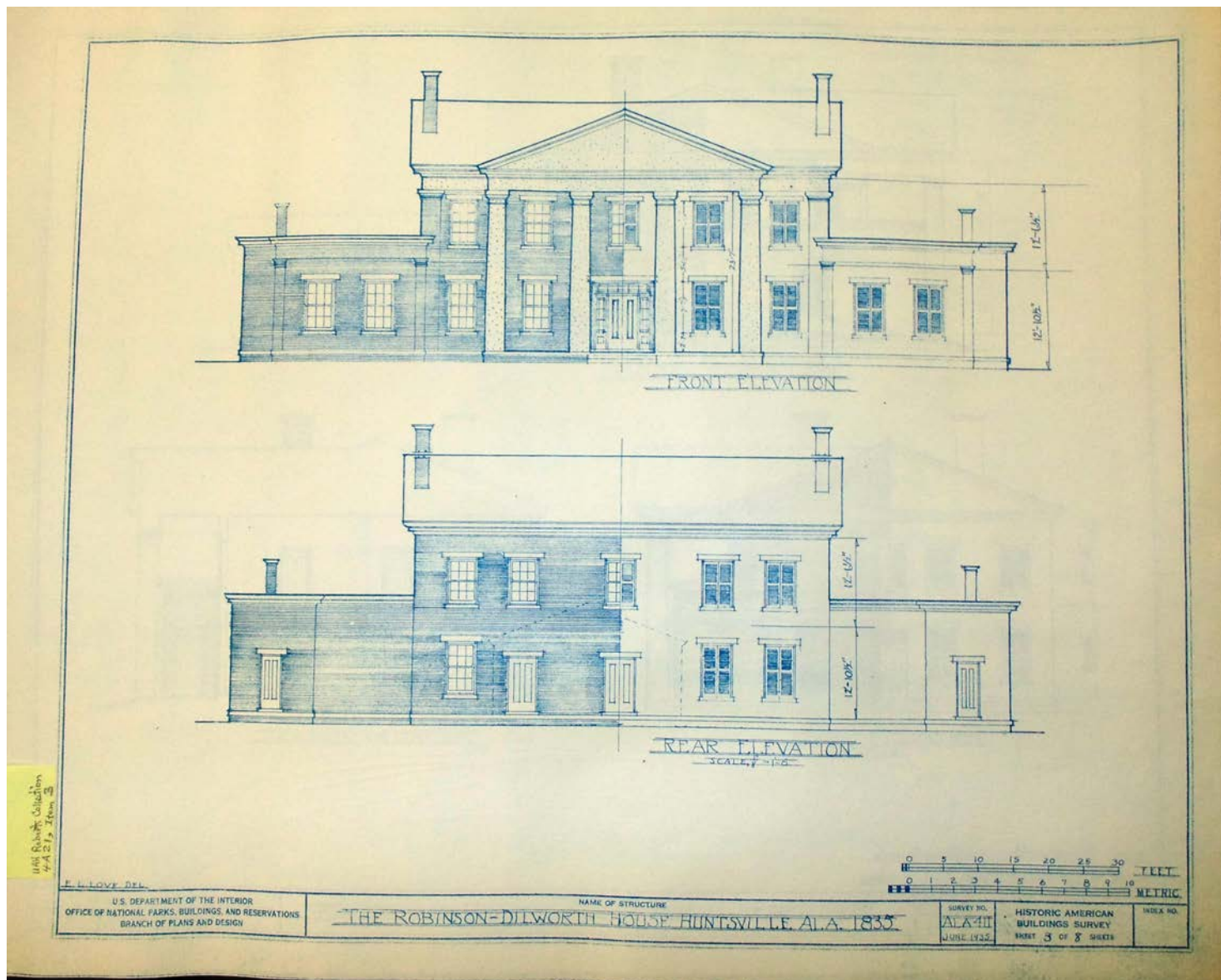
blueprint

Dates:

June 1935

Robinson/Dilworth House Blueprint, 1935

Image 4 r04a21-00-003-5400 [Contents](#) [Index](#) [About](#)



Robinson - Dilworth House

Names:

Front & Rear
Elevation

Places:

Huntsville, AL

Types:

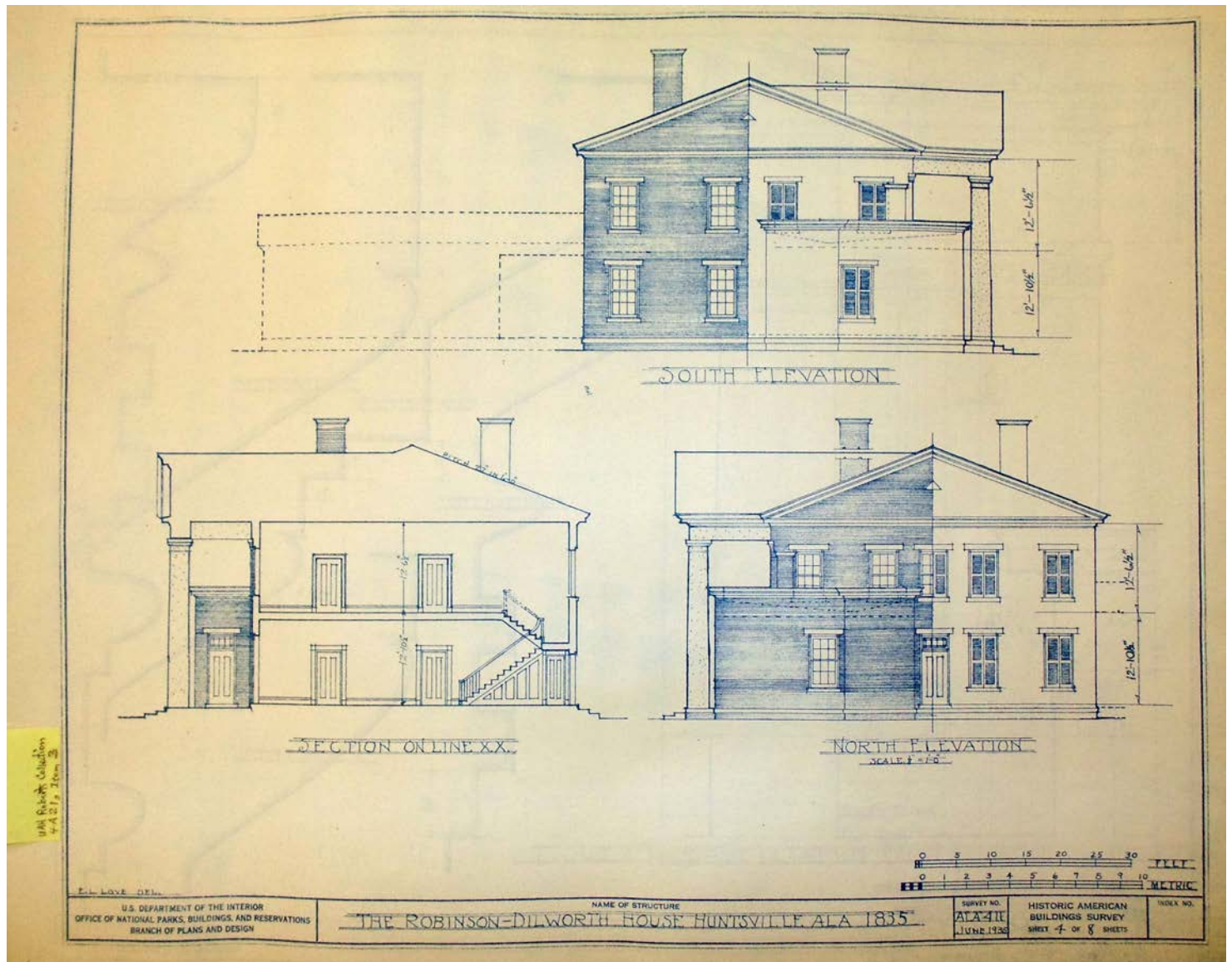
blueprint

Dates:

June 1935

Robinson/Dilworth House Blueprint, 1935

Image 5 r04a21-00-003-5401 [Contents](#) [Index](#) [About](#)



Robinson - Dilworth House

Names:

Section of House

South & North
Elevation

Places:

Huntsville, AL

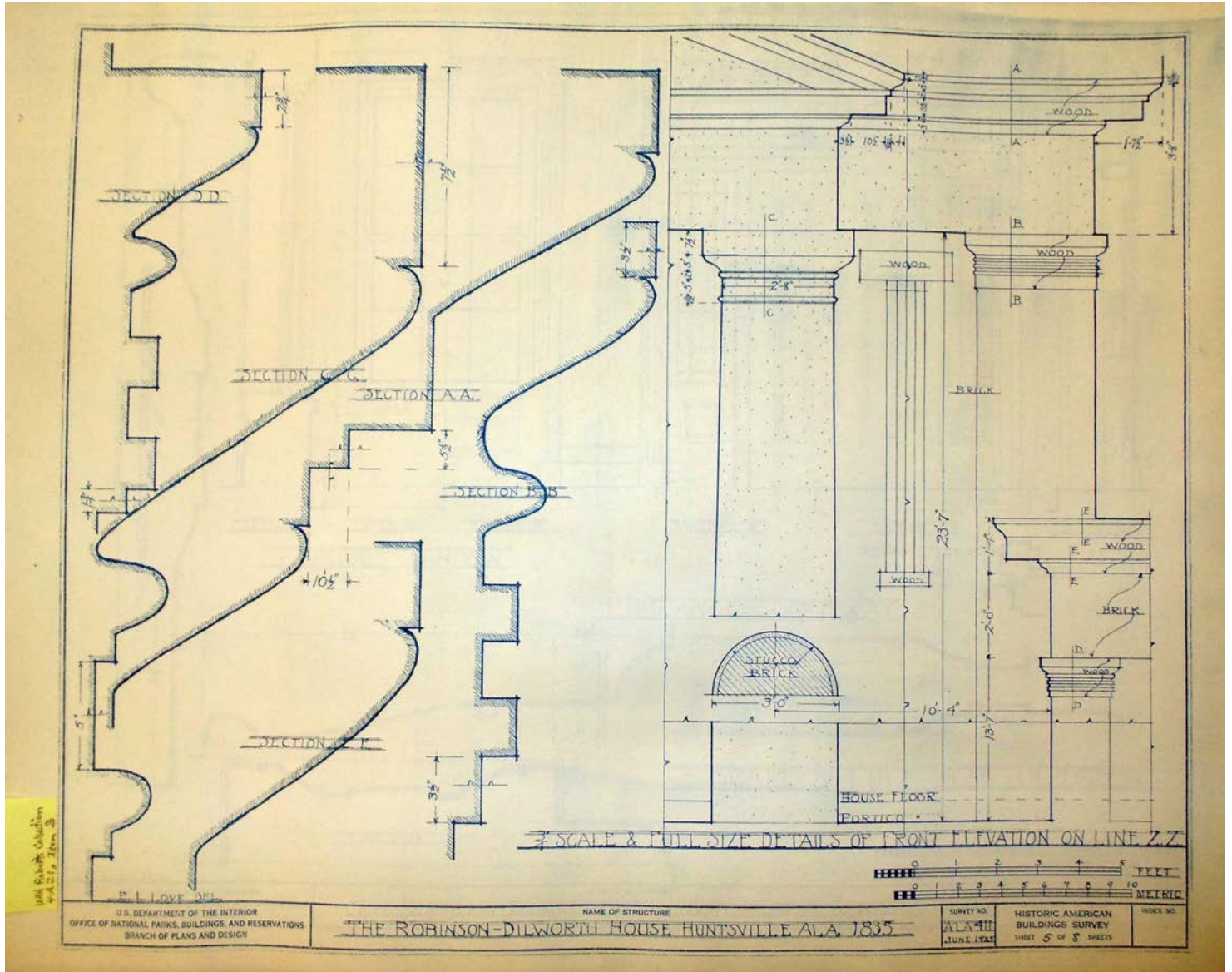
Types:

blueprint

Dates:

June 1935

Robinson/Dilworth House Blueprint, 1935



Robinson - Dilworth House

Names:

Front Elevation
Details

Sections of House

Places:

Huntsville, AL

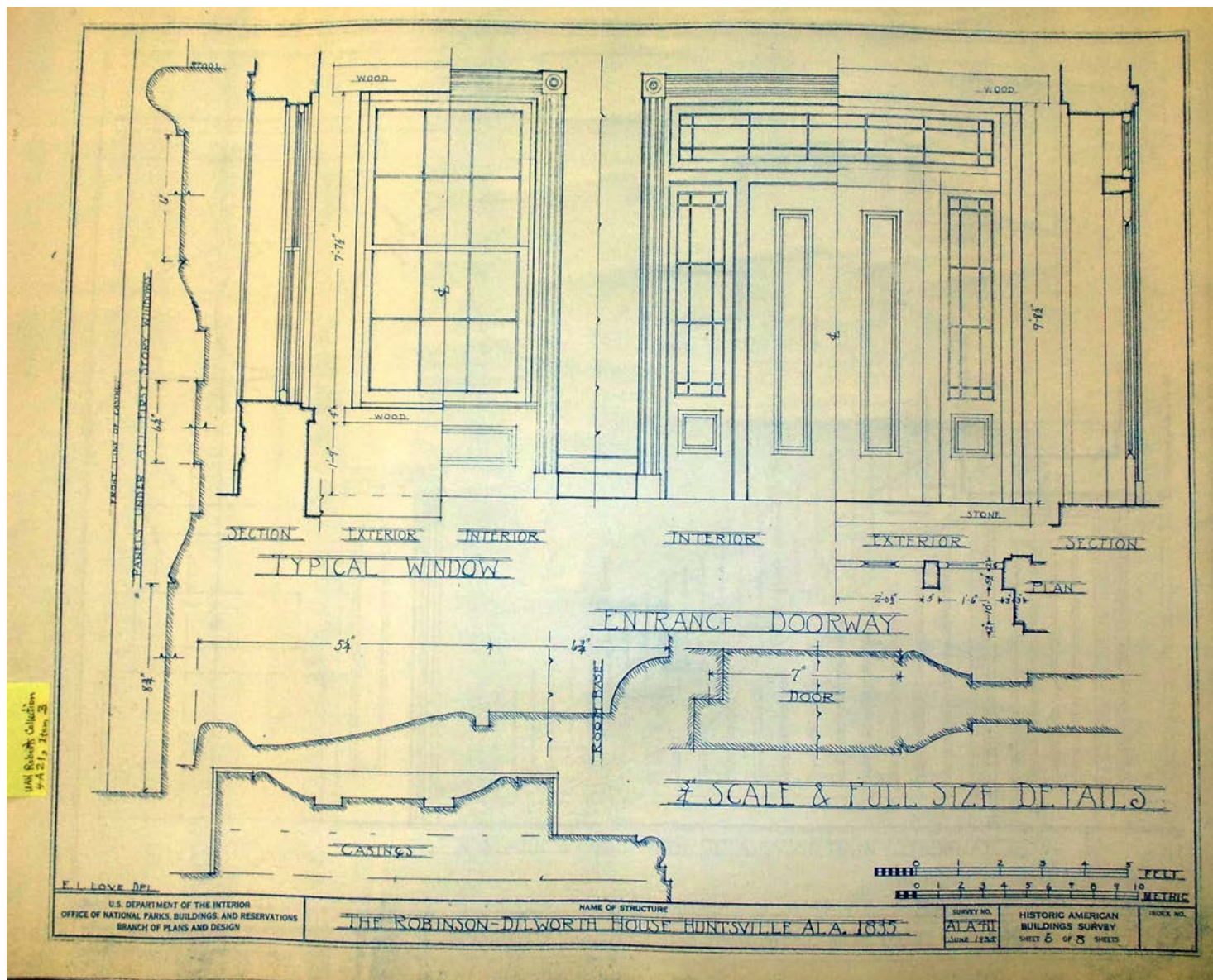
Types:

blueprint

Dates:

June 1935

Robinson/Dilworth House Blueprint, 1935



Robinson - Dilworth House

Names:

Entrance Doorway

Typical Window

Places:

Huntsville, AL

Types:

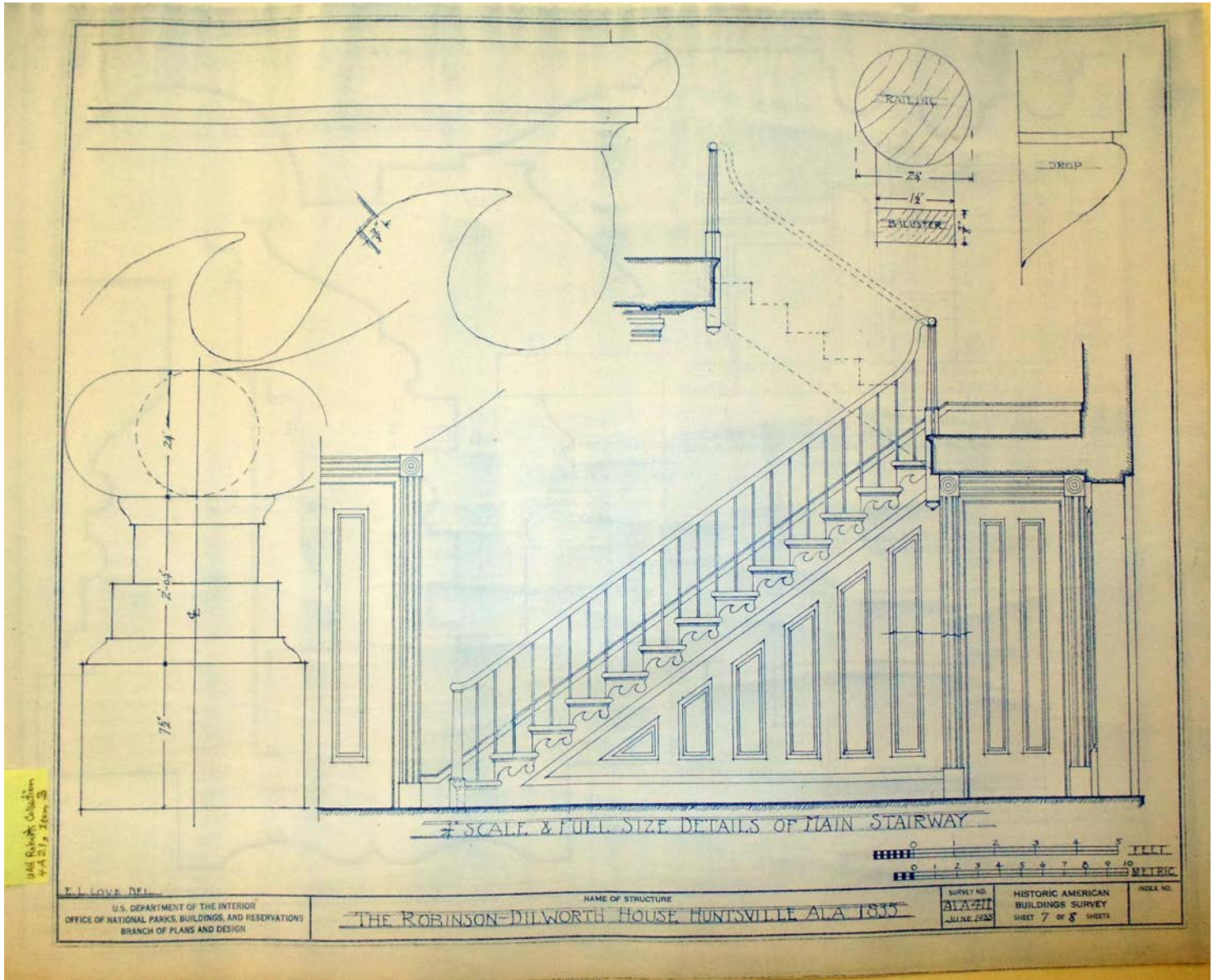
blueprint

Dates:

June 1935

Robinson/Dilworth House Blueprint, 1935

Image 8 r04a21-00-003-5404 [Contents](#) [Index](#) [About](#)



Robinson - Dilworth House

Names:

Main Stairway

Places:

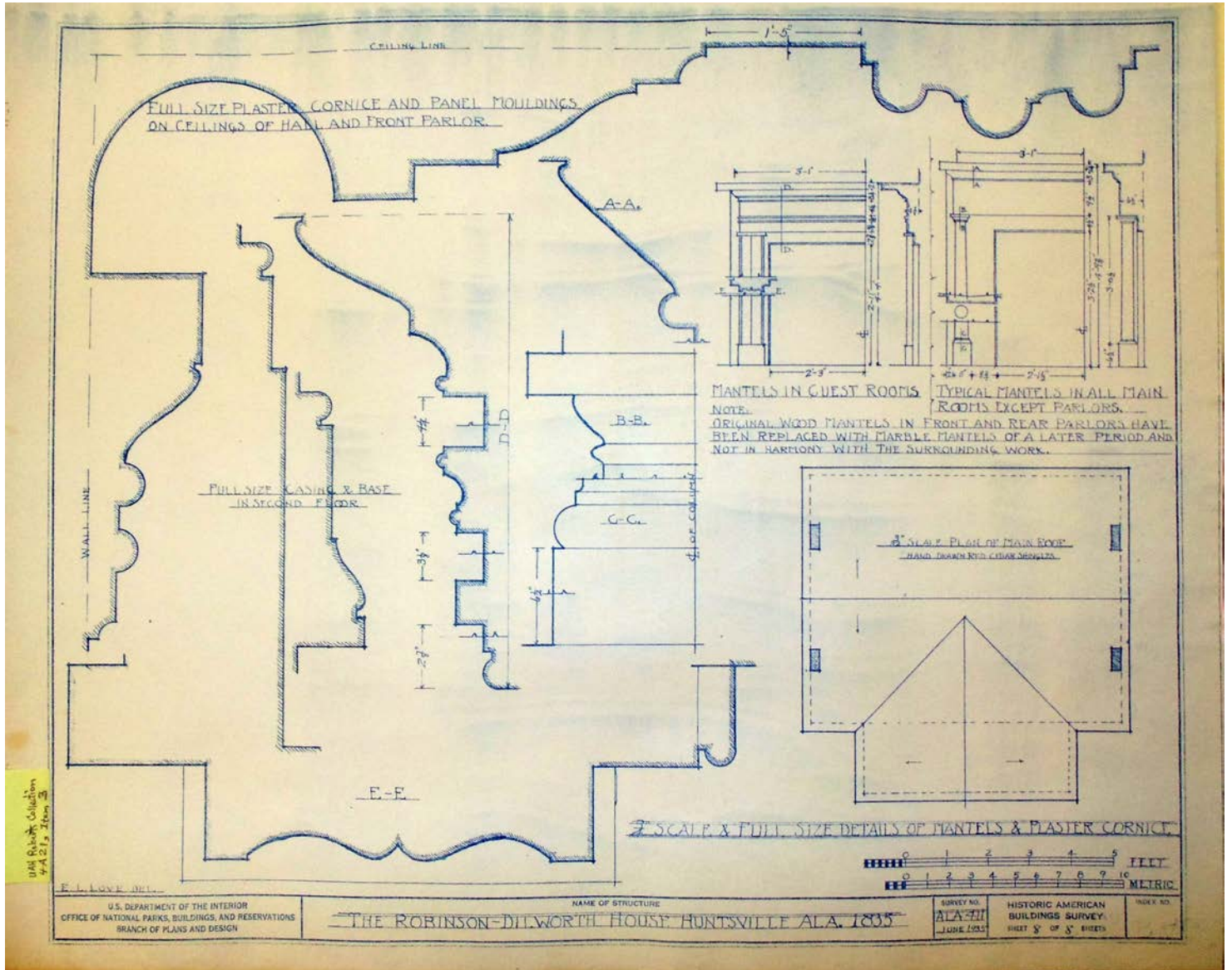
Huntsville, AL

Types:

blueprint

Dates:

June 1935



Robinson - Dilworth House

Names:

Mantels & Cornice

Plan of Main Roof

Places:

Huntsville, AL

Types:

blueprint

Dates:

June 1935

Roberts H A 21

SEPARATION SHEET

Special Collections and Archives University of Alabama in Huntsville

Category of item(s):

- Audiocassette Printed materials Electronic records Three-dimensional objects
- Oversized materials Videotape Photographs/negatives Other _____

Number of items: 34 oversize blueprints

Provide information about item(s) (for example, if a photograph identify as to size, content, and whether b/w or color)

Blue prints public/private homes - Madison County Court House, Steele/Flower Residence, Robinson/Dilworth, Bibb/Hutchens Pope/Spragins, Pyncheon/Fackler, First National Bank

Related manuscript material also pulled? If so, please describe.

Originally filed in:

Collection Name: Frances Cabaniss Roberts Collection

Series: 4

Subseries: A

Folder title: Box 21

Relocated to:

Collection Name: Dorm 5, Flat file - backroom

Series: _____

Subseries: _____

Folder title: _____

Purpose of removal: oversize / space

Date: 7-26-17 Initials: DC

Place one copy in original folder. Place a second copy in control folder and remember to update finding aid.

Places:

Huntsville, AL

Types:

form

Dates:

July 26, 2017

**Frances Cabaniss Roberts Collection: Series 4, Subseries A, Box 21, Item 3
Robinson/Dilworth House Blueprint, 1935**

[Contents](#) [Index](#) [About](#)

Table of Contents

[Image 1](#) (r04a21-00-003-5397)

[Image 2](#) (r04a21-00-003-5398)

[Image 3](#) (r04a21-00-003-5399)

[Image 4](#) (r04a21-00-003-5400)

[Image 5](#) (r04a21-00-003-5401)

[Image 6](#) (r04a21-00-003-5402)

[Image 7](#) (r04a21-00-003-5403)

[Image 8](#) (r04a21-00-003-5404)

[Image 9](#) (r04a21-00-003-5405)

[Image 10](#) (r04a21-00-003-5406)

[Table of Contents](#)

[Name & Place Index](#)

[About the Collection](#)

Frances Cabaniss Roberts Collection: Series 4, Subseries A, Box 21, Item 3
Robinson/Dilworth House Blueprint, 1935

[Contents](#) [Index](#) [About](#)

Name & Place Index

Entrance Doorway [7](#)

First Floor Plan [1](#), [2](#)

Front & Rear Elevation [4](#)

Front Elevation Details [6](#)

Huntsville, AL [1](#), [2](#), [3](#), [4](#), [5](#), [6](#), [7](#), [8](#), [9](#), [10](#)

Main Stairway [8](#)

Mantels & Cornice [9](#)

Plan of Main Roof [9](#)

Robinson - Dilworth House [1](#), [2](#)

Second Floor Plan [3](#)

Section of House [5](#)

Sections of House [6](#)

South & North Elevation [5](#)

Typical Window [7](#)

Frances Cabaniss Roberts Collection

Preferred Citation: Frances Cabaniss Roberts Collection, Archives and Special Collections, M. Louis Salmon Library, University of Alabama in Huntsville, Huntsville, AL.

Collection Scope and Content: The Collection of 114 Linear ft. includes a total of 156 Archival Boxes. The Frances Cabaniss Roberts collection covers the historical records of the Cabaniss Roberts family. This collection contains extensive correspondence records of the Cabaniss Roberts family circa 1830 to 1930.

Archives/Special Collections Access Restrictions: None

Conditions Governing Use: This material may be protected under U. S. Copyright Law (Title 17, U.S. Code) which governs the making of photocopies or reproductions of copyrighted materials. You may use the digitized material for private study, scholarship, or research. Though the University of Alabama in Huntsville Archives and Special Collections has physical ownership of the material in its collections, in some cases we may not own the copyright to the material. It is the patron's obligation to determine and satisfy copyright restrictions when publishing or otherwise distributing materials found in our collections.

Provenance: Gift of Johanna Shields on October 28, 2006.



THE UNIVERSITY OF
ALABAMA IN HUNTSVILLE

**The UAH Archives and Special Collections
M. Louis Salmon Library**