

**Names:**

First Floor Plan

First National Bank  
of Alabama

Second Floor Plan

**Places:**

Huntsville, AL

**Types:**

blueprint

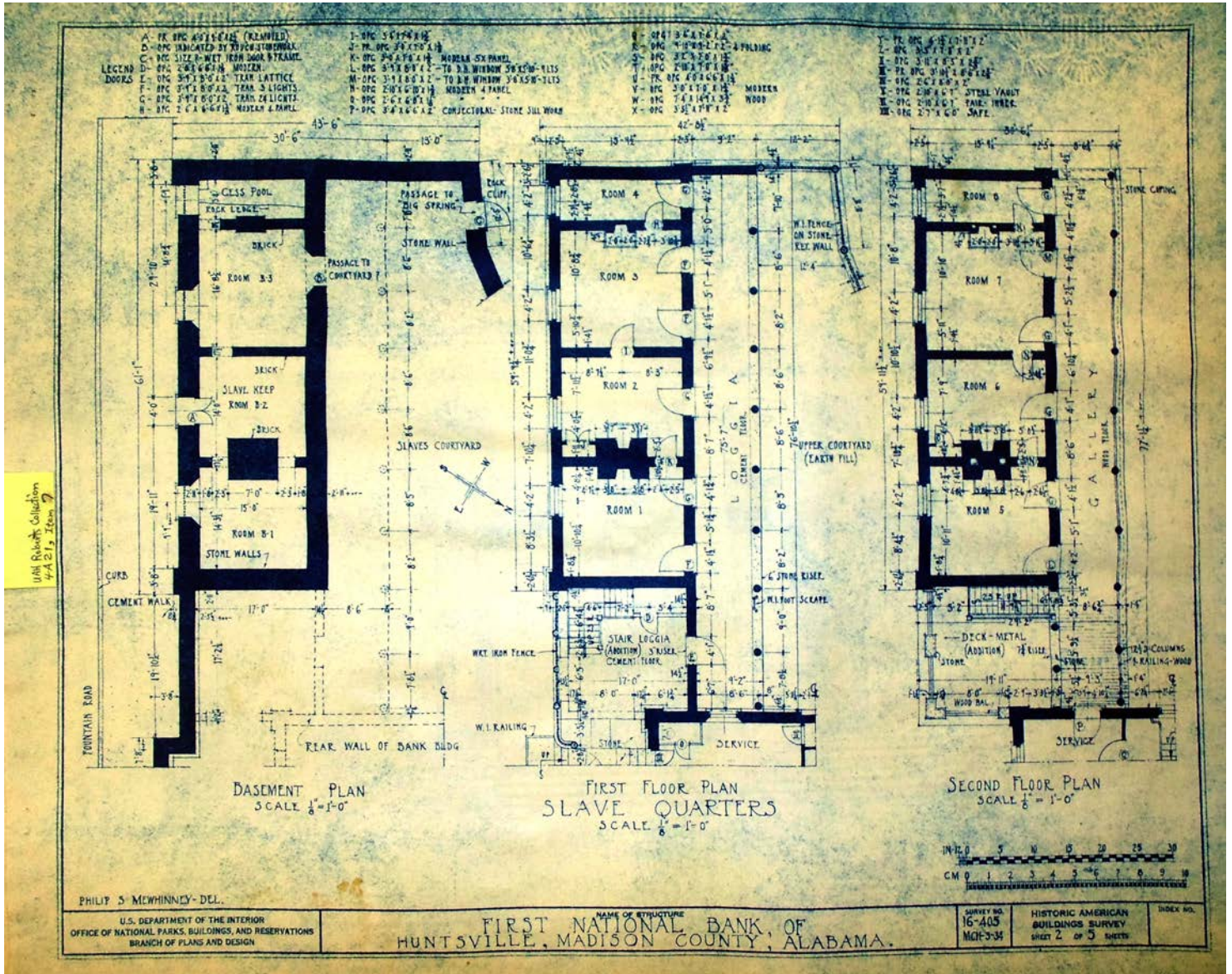
**Dates:**

Mar 3, 1934



First National Bank Blueprint, 1934

Image 2 r04a21-00-007-5419 [Contents](#) [Index](#) [About](#)



First National Bank of Alabama

Names:

Slave Quarters -  
Basement Plan

Slave Quarters - First  
Floor Plan

Slave Quarters -  
Second Floor Plan

Places:

Huntsville, AL

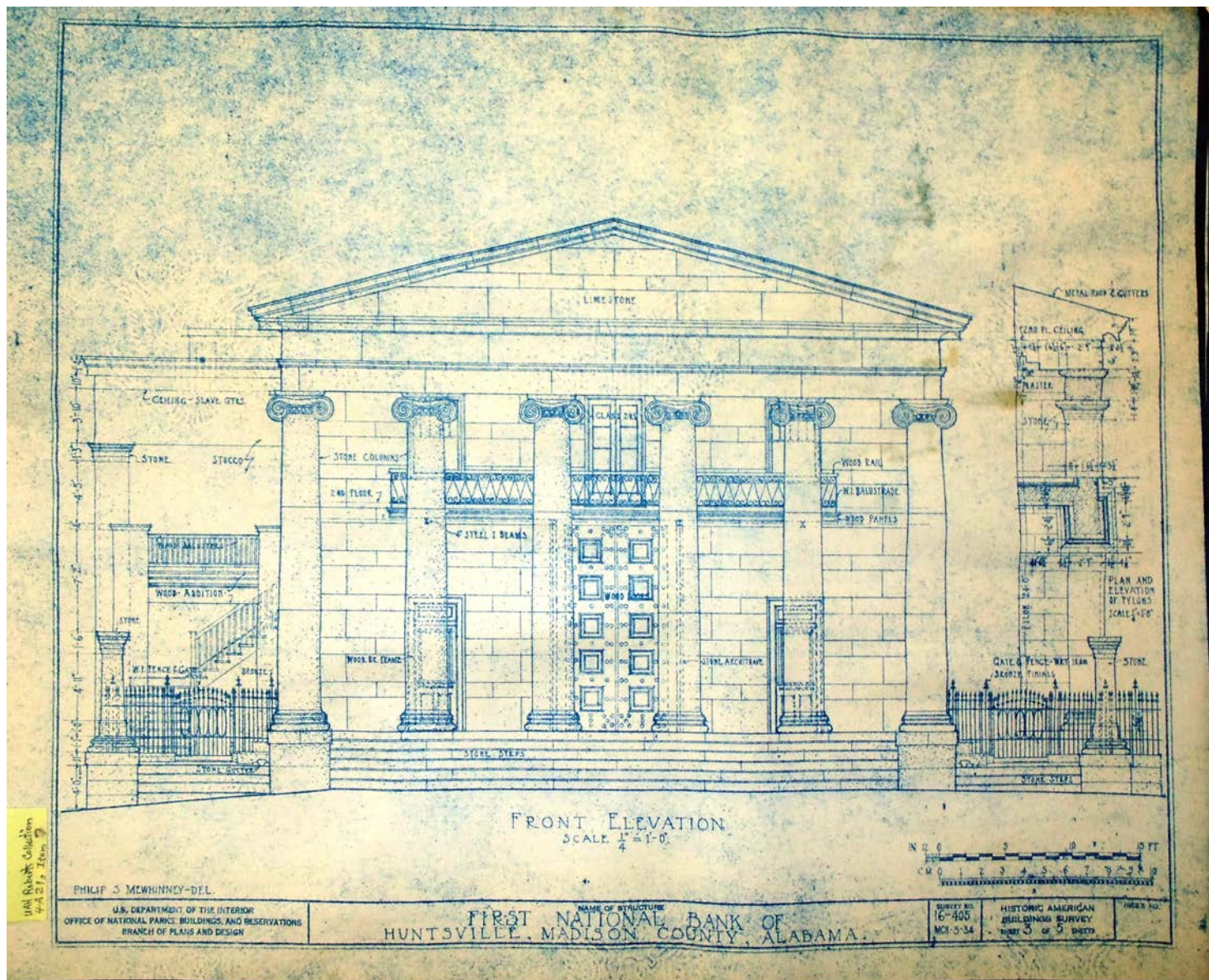
Types:

blueprint

Dates:

Mar 3, 1934





First National Bank of Alabama

**Names:**

Front Elevation

**Places:**

Huntsville, AL

**Types:**

blueprint

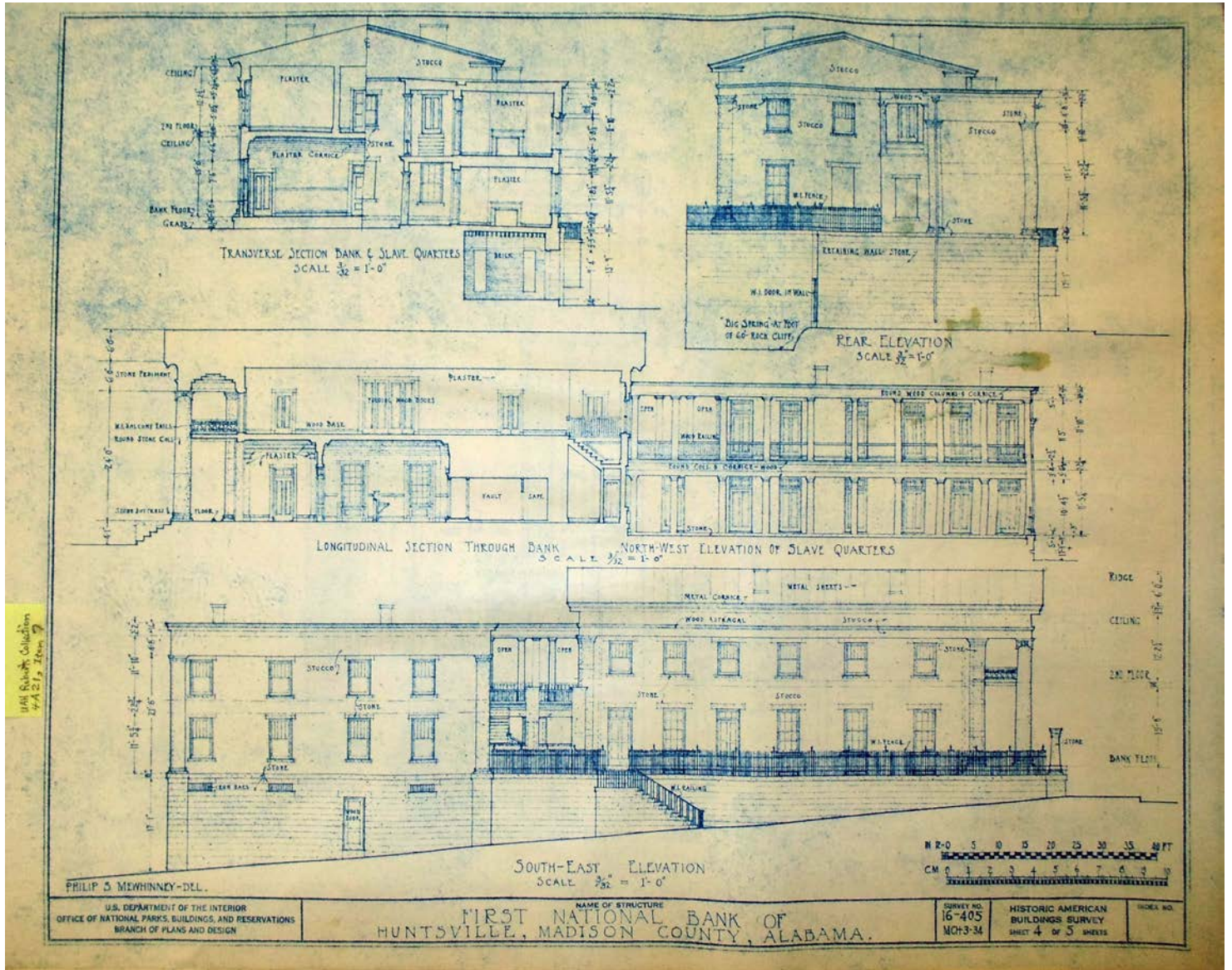
**Dates:**

Mar 3, 1934



First National Bank Blueprint, 1934

Image 4 r04a21-00-007-5421 [Contents](#) [Index](#) [About](#)



First National Bank of Alabama

Names:

Longitudinal Section  
Rear Elevation

Slave Quarters -  
North-West

Elevation  
South-East Elevation

Transverse Section

Places:

Huntsville, AL

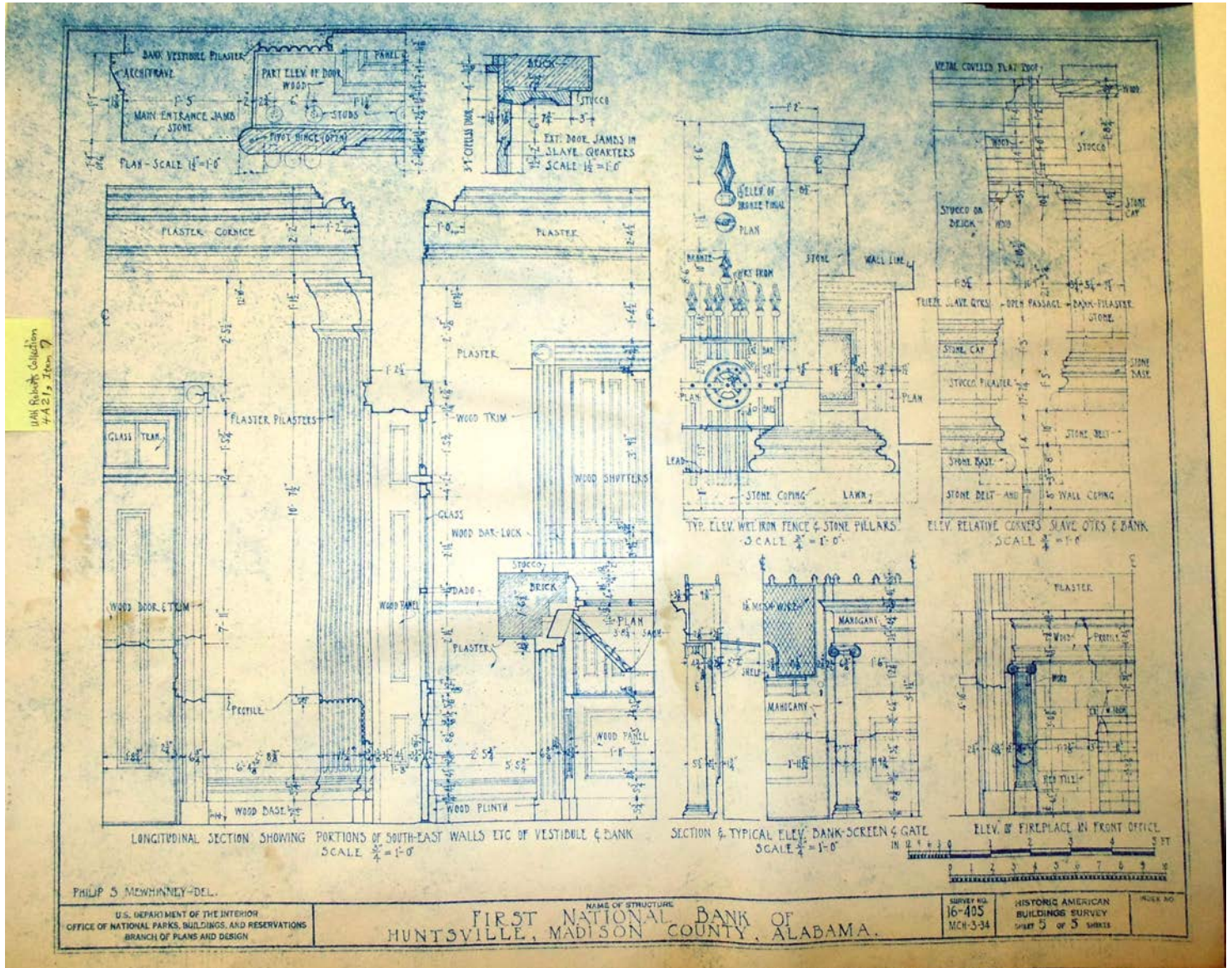
Types:

blueprint

Dates:

Mar 3, 1934





First National Bank of Alabama

**Names:**

Bank Screen & Gate  
 Corners - Slave  
 Quarters & Bank

Fireplace  
 Iron Fence & Stone  
 Pillars

South-East Walls Etc.  
 Section

**Places:**

Huntsville, AL

**Types:**

blueprint

**Dates:**

Mar 3, 1934

Roberts H A 21

SEPARATION SHEET

Special Collections and Archives University of Alabama in Huntsville

Category of item(s):

- Audiocassette  Printed materials  Electronic records  Three-dimensional objects
- Oversized materials  Videotape  Photographs/negatives  Other \_\_\_\_\_

Number of items: 34 oversize blueprints

Provide information about item(s) (for example, if a photograph identify as to size, content, and whether b/w or color)

Blue prints public/private homes - Madison County Court House, Steele / Flower Residence, Robinson / Dilworth, Bibb / Hutchens Pope / Spragins, Pynchon / Fackler, First National Bank

Related manuscript material also pulled? If so, please describe.

Originally filed in:

Collection Name: Frances Cabaniss Roberts Collection

Series: 4

Subseries: A

Folder title: Box 21

Relocated to:

Collection Name: Dorm 5, Flat file - backroom

Series: \_\_\_\_\_

Subseries: \_\_\_\_\_

Folder title: \_\_\_\_\_

Purpose of removal: oversize / space

Date: 7-26-17 Initials: DC

Place one copy in original folder. Place a second copy in control folder and remember to update finding aid.

Places:

Huntsville, AL

Types:

form

Dates:

July 26, 2017

**Frances Cabaniss Roberts Collection: Series 4, Subseries A, Box 21, Item 7**  
**First National Bank Blueprint, 1934**

[Contents](#) [Index](#) [About](#)

## Table of Contents

[Image 1](#) (r04a21-00-007-5418)

[Image 2](#) (r04a21-00-007-5419)

[Image 3](#) (r04a21-00-007-5420)

[Image 4](#) (r04a21-00-007-5421)

[Image 5](#) (r04a21-00-007-5422)

[Image 6](#) (r04a21-00-007-5423)

[Table of Contents](#)

[Name & Place Index](#)

[About the Collection](#)

## Name & Place Index

Bank Screen & Gate [5](#)

Corners - Slave Quarters & Bank [5](#)

Fireplace [5](#)

First Floor Plan [1](#)

First National Bank of Alabama [1](#)

Front Elevation [3](#)

Huntsville, AL [1](#), [2](#), [3](#), [4](#), [5](#), [6](#)

Iron Fence & Stone Pillars [5](#)

Longitudinal Section [4](#)

Rear Elevation [4](#)

Second Floor Plan [1](#)

Slave Quarters - Basement Plan [2](#)

Slave Quarters - First Floor Plan [2](#)

Slave Quarters - North-West Elevation [4](#)

Slave Quarters - Second Floor Plan [2](#)

South-East Elevation [4](#)

South-East Walls Etc. Section [5](#)

Transverse Section [4](#)



# Frances Cabaniss Roberts Collection

**Preferred Citation:** Frances Cabaniss Roberts Collection, Archives and Special Collections, M. Louis Salmon Library, University of Alabama in Huntsville, Huntsville, AL.

**Collection Scope and Content:** The Collection of 114 Linear ft. includes a total of 156 Archival Boxes. The Frances Cabaniss Roberts collection covers the historical records of the Cabaniss Roberts family. This collection contains extensive correspondence records of the Cabaniss Roberts family circa 1830 to 1930.

**Archives/Special Collections Access Restrictions:** None

**Conditions Governing Use:** This material may be protected under U. S. Copyright Law (Title 17, U.S. Code) which governs the making of photocopies or reproductions of copyrighted materials. You may use the digitized material for private study, scholarship, or research. Though the University of Alabama in Huntsville Archives and Special Collections has physical ownership of the material in its collections, in some cases we may not own the copyright to the material. It is the patron's obligation to determine and satisfy copyright restrictions when publishing or otherwise distributing materials found in our collections.

**Provenance:** Gift of Johanna Shields on October 28, 2006.



THE UNIVERSITY OF  
ALABAMA IN HUNTSVILLE

**The UAH Archives and Special Collections  
M. Louis Salmon Library**