

Names:

Cagle, Joe
Cagle, Tom
Campbell,
Cherokee Indians
Ferrel,

Fowler,
Fowler, Uncle Bud
Gentry, J. A.
Hamaker,
Key, Jess

Kilpatrick,
McCollum,
McGeehee,
Quick's Mill
Riddle,

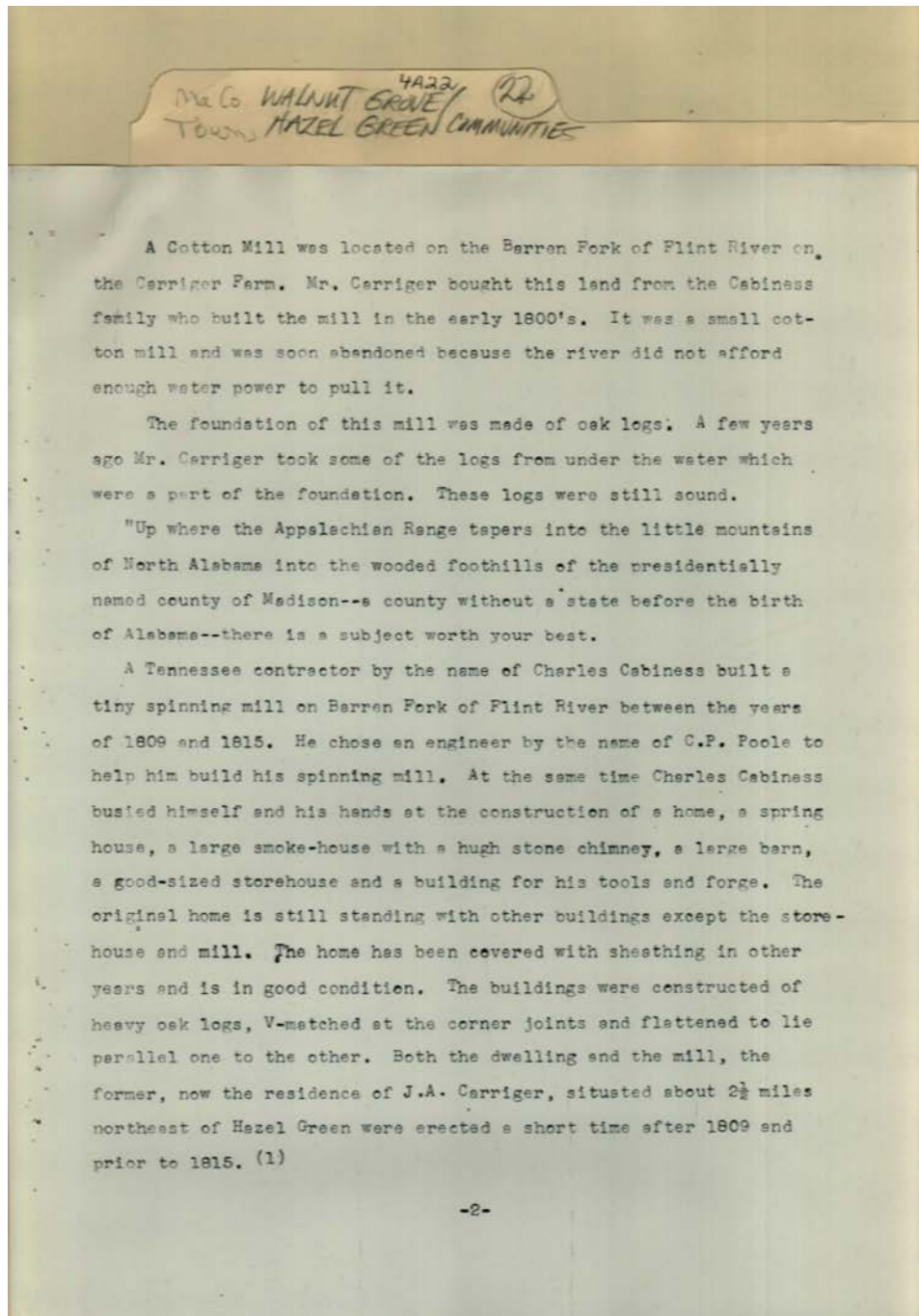
Smith,
Tanner,
Tidwell,
Walnut Grove
Community

Places:

Walnut Grove, AL

Types:

essay



Names:

Cabiness,

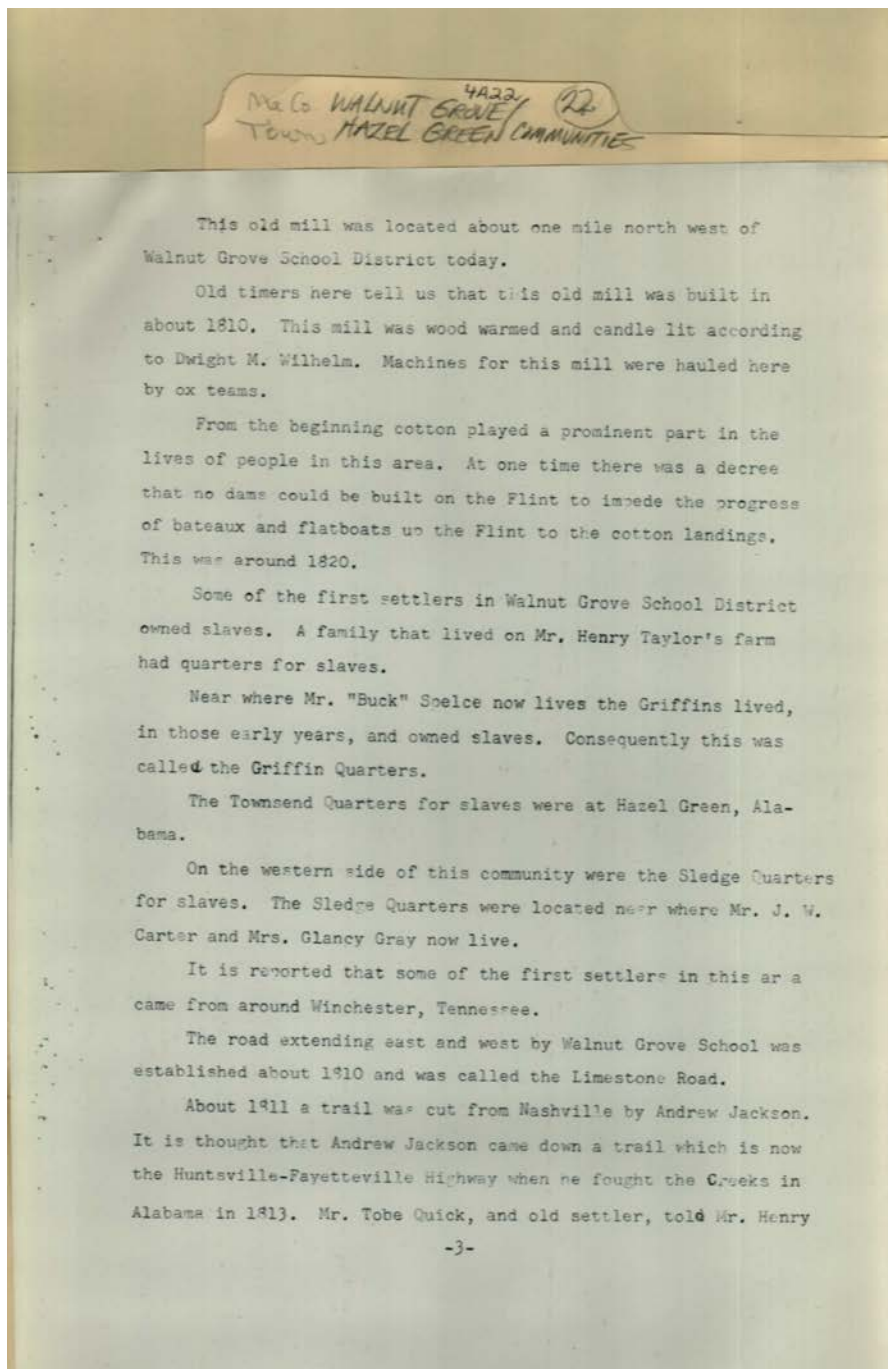
Cabiness, Charles

Carriger, J. A.

Poole, C. P.

Types:

essay



Names:

Carter, J. W.
Creeks
Gray, Glancy

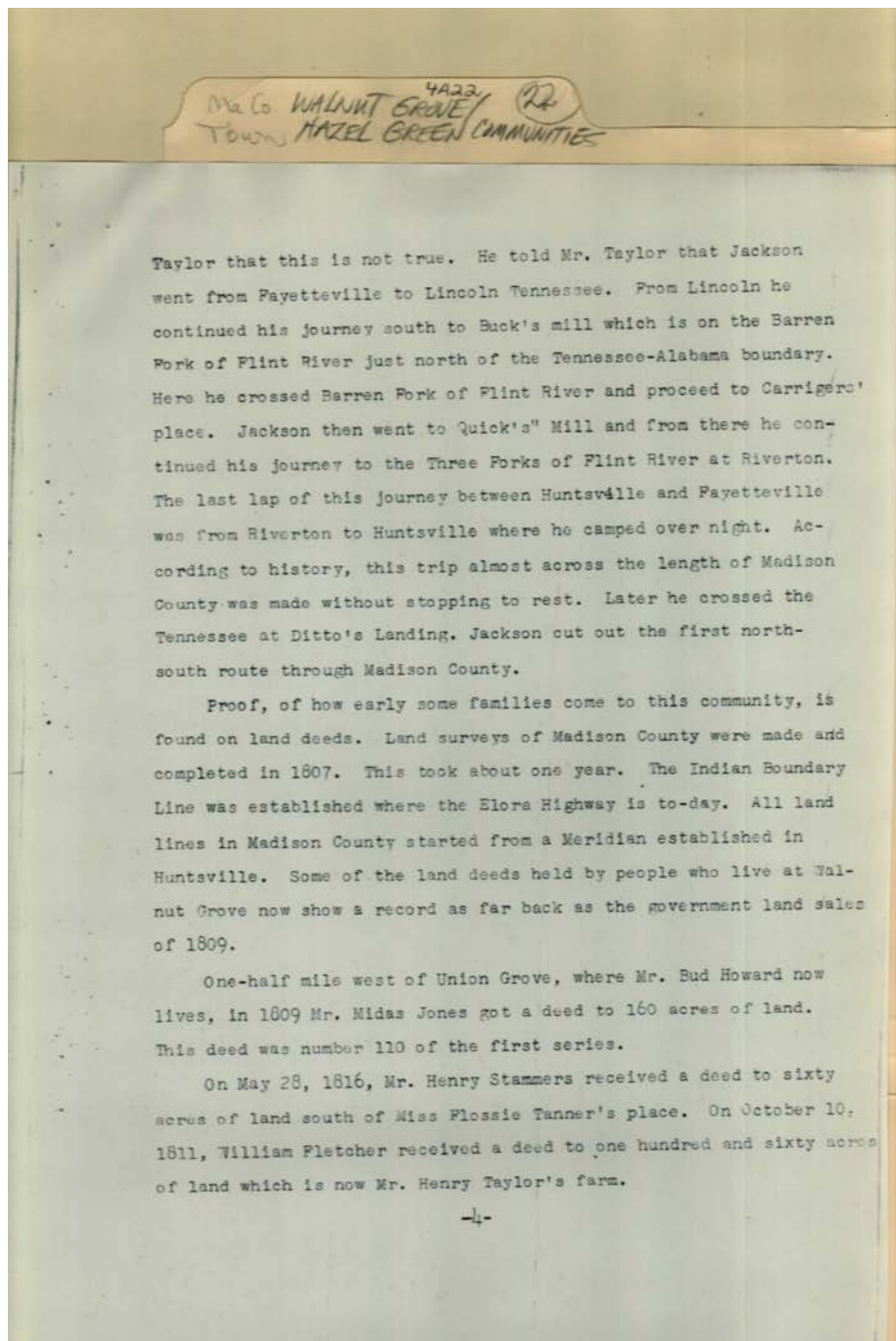
Griffin,
Jackson, Andrew
Quick, Tobe

Sledge,
Spelce, Buck
Taylor, Henry

Townsend,
Wilhelm, Dwight M.

Types:

essay



Names:

Fletcher, William
Howard, Bud

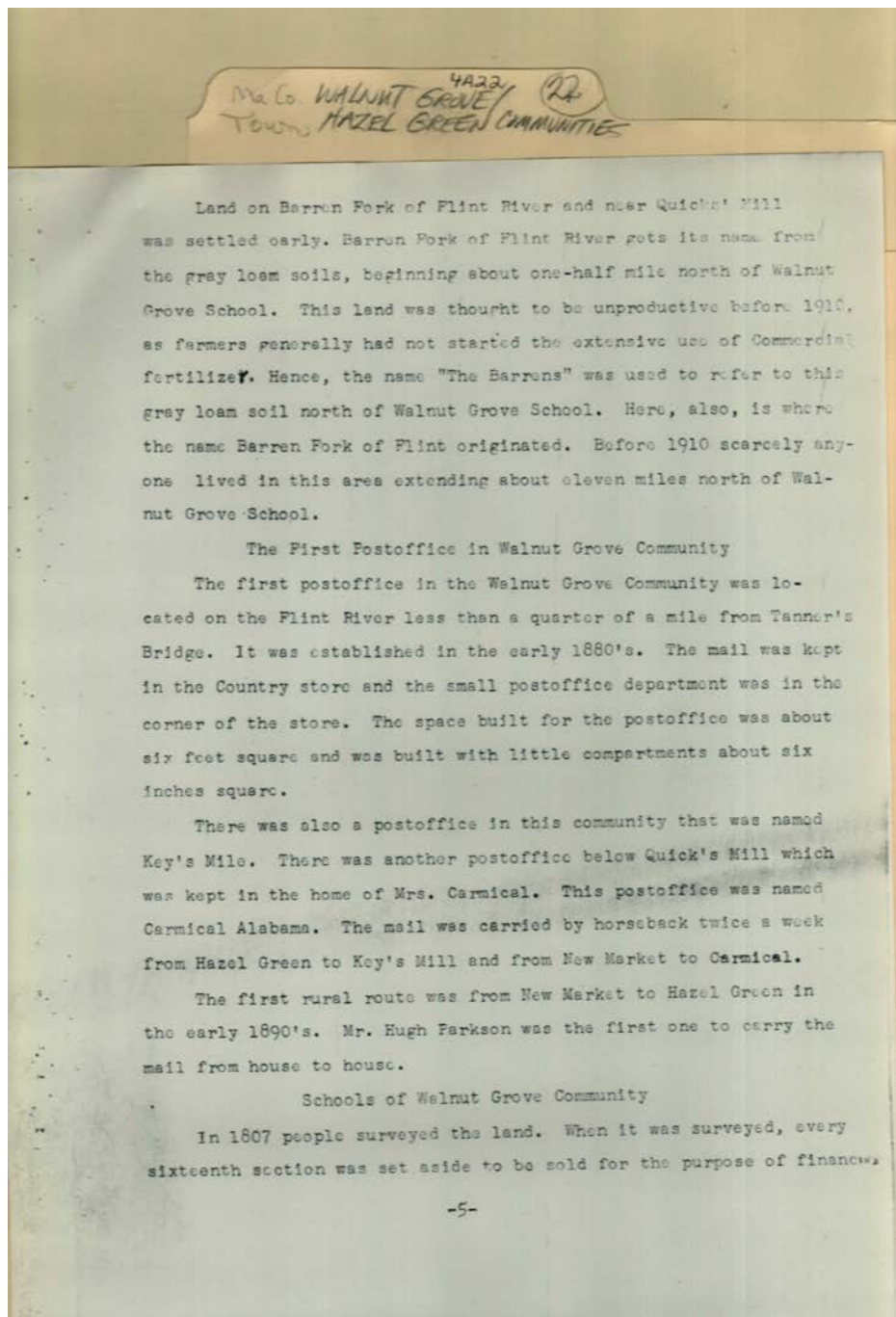
Jackson Route to
Huntsville
Jackson,

Jones, Midas
Stammers, Henry
Tanner, Flossie

Taylor, Henry

Types:

essay



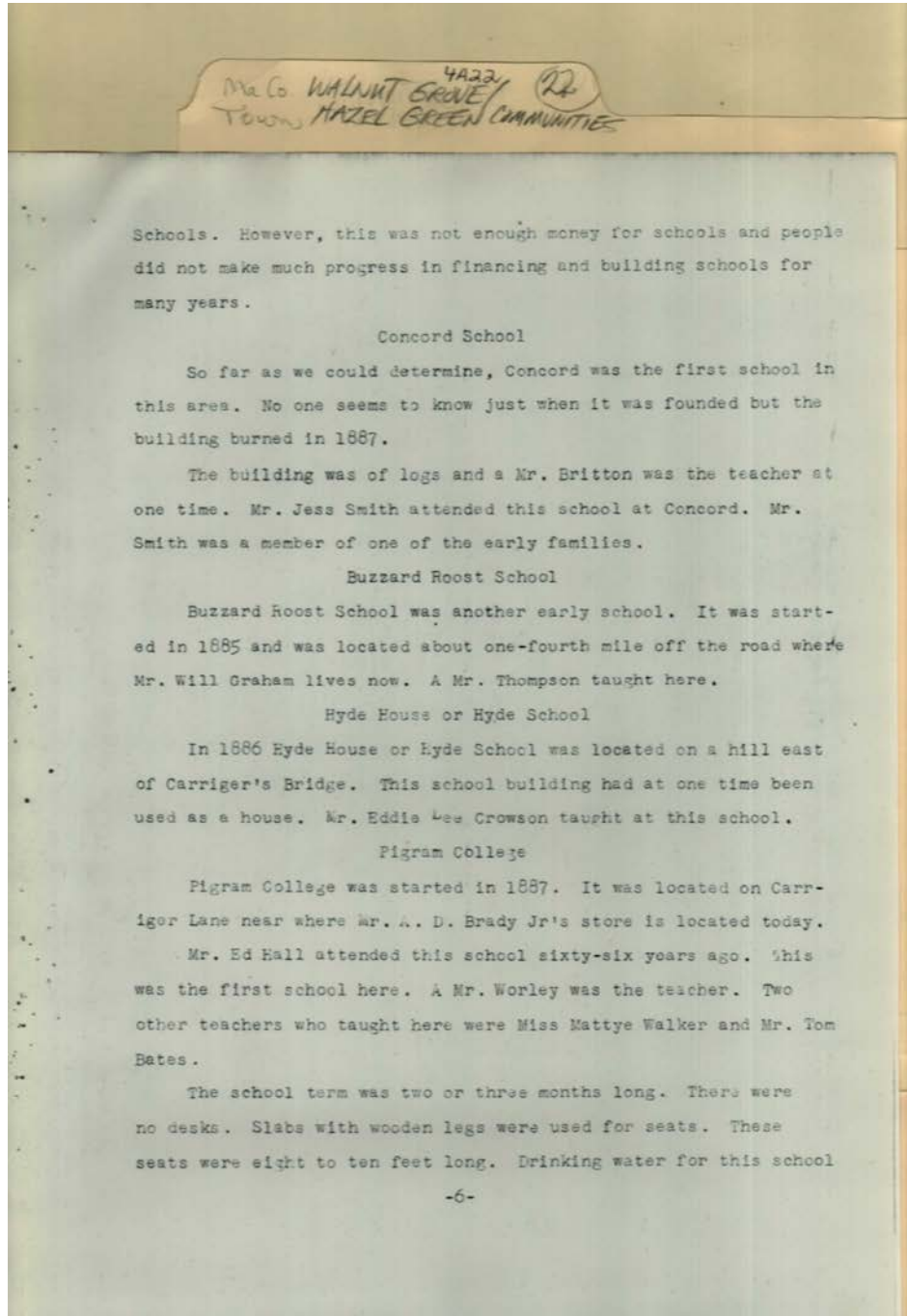
Names:

Barren Fork of Flint
River

Carmical, Mrs.
Parkson, Hugh

Types:

essay



Names:

Bates, Tom
Brady, A. D., Jr.
Britton,

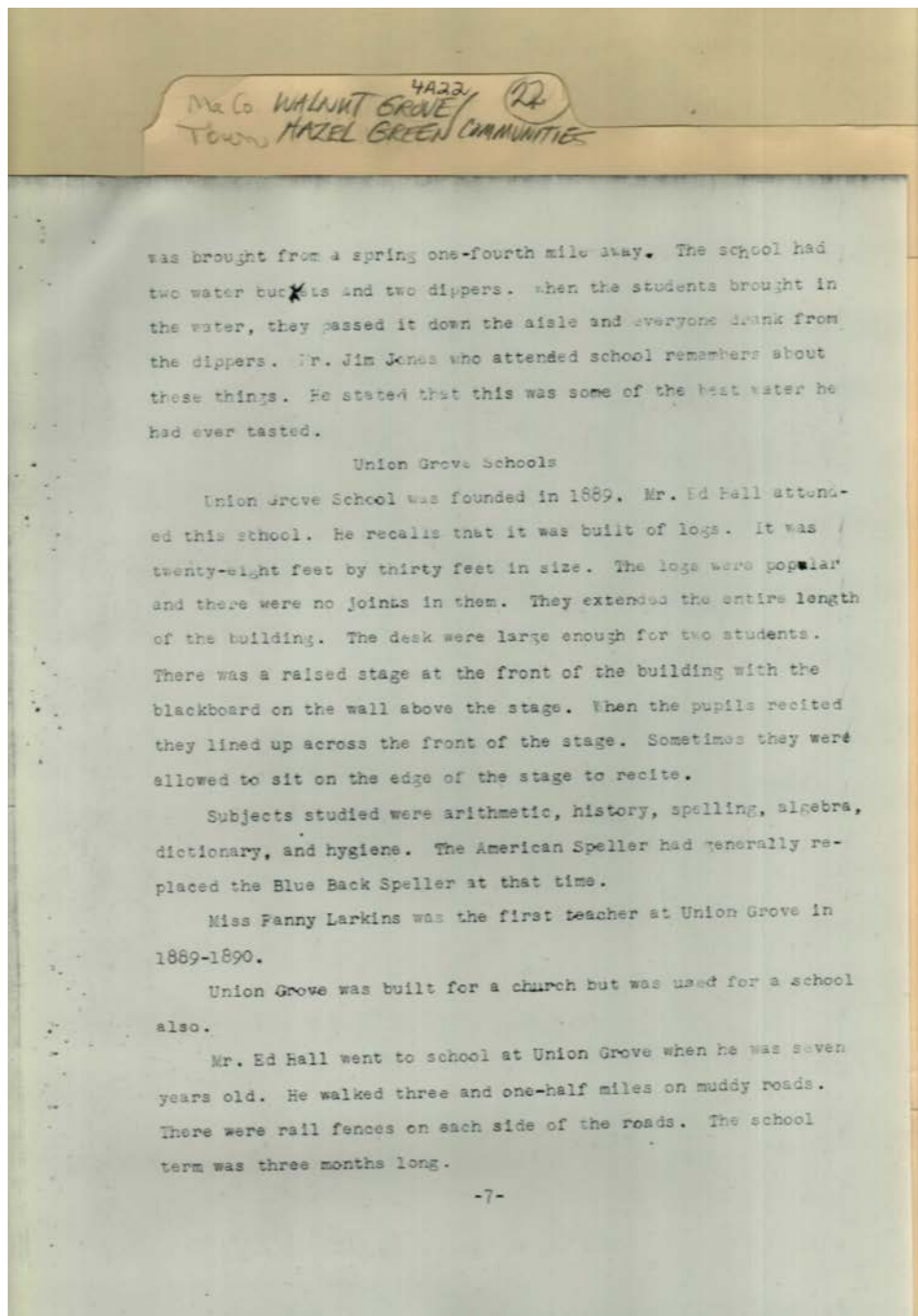
Buzzard Roost
School
Concord School
Crowson, Eddie Lee

Graham, Will
Hall, Ed
Hyde School,
Pigram College

Smith, Jess
Thompson,
Walker, Mattye
Worley,

Types:

essay



Names:

Hall, Ed

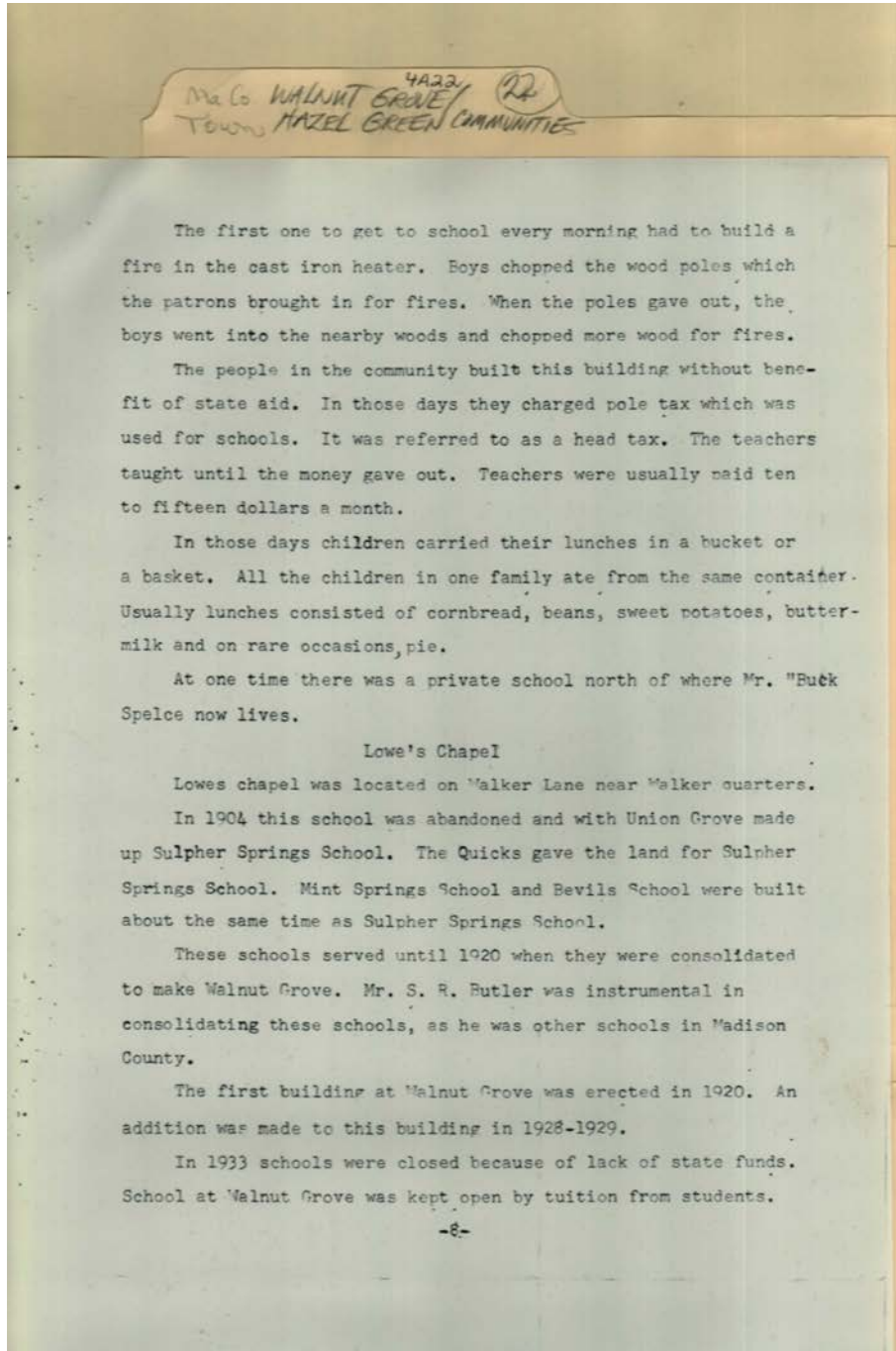
Jones, Jim

Larkins, Fanny

Union Grove Schools

Types:

essay



Names:

Bevils School
Butler, S. R.

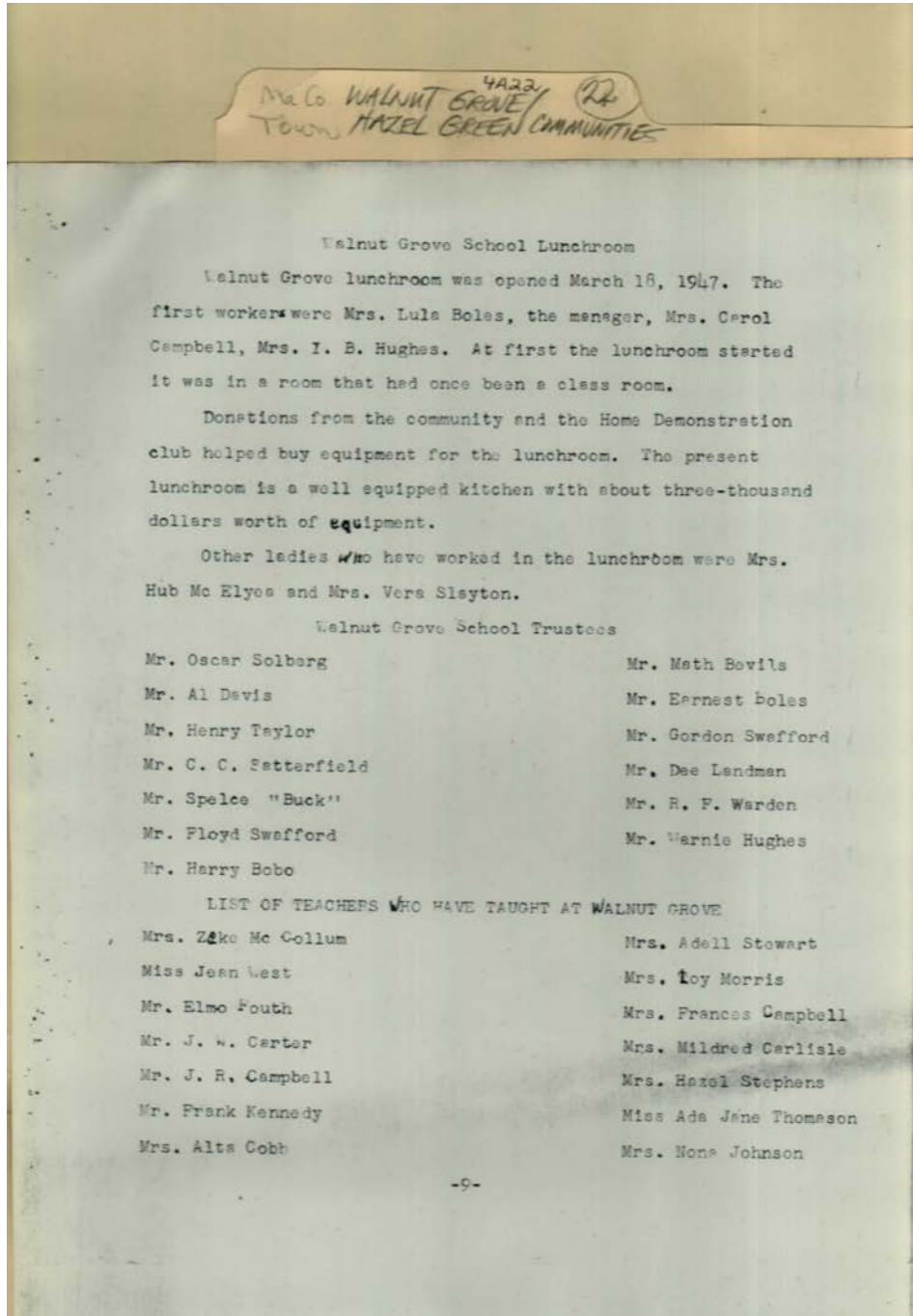
Lowe's Chapel
Mint Springs School

Quick,
Spelce, Buck

Sulpher Springs
School

Types:

essay



Names:

Bevils, Math
Bobo, Harry
Boles, Earnest
Boles, Lula
Campbell, Carol
Campbell, Frances,
Mrs.
Campbell, J. R.
Carlisle, Mildred,
Mrs.

Carter, J. W.
Cobb, Alta, Mrs.
Davis, Al
Elyes, Hub, Mrs.
Fouth, Elmo
Hughes, I. B., Mrs.
Hughes, Wernie
Johnson, Nona
Kennedy, Frank
Landman, Dee

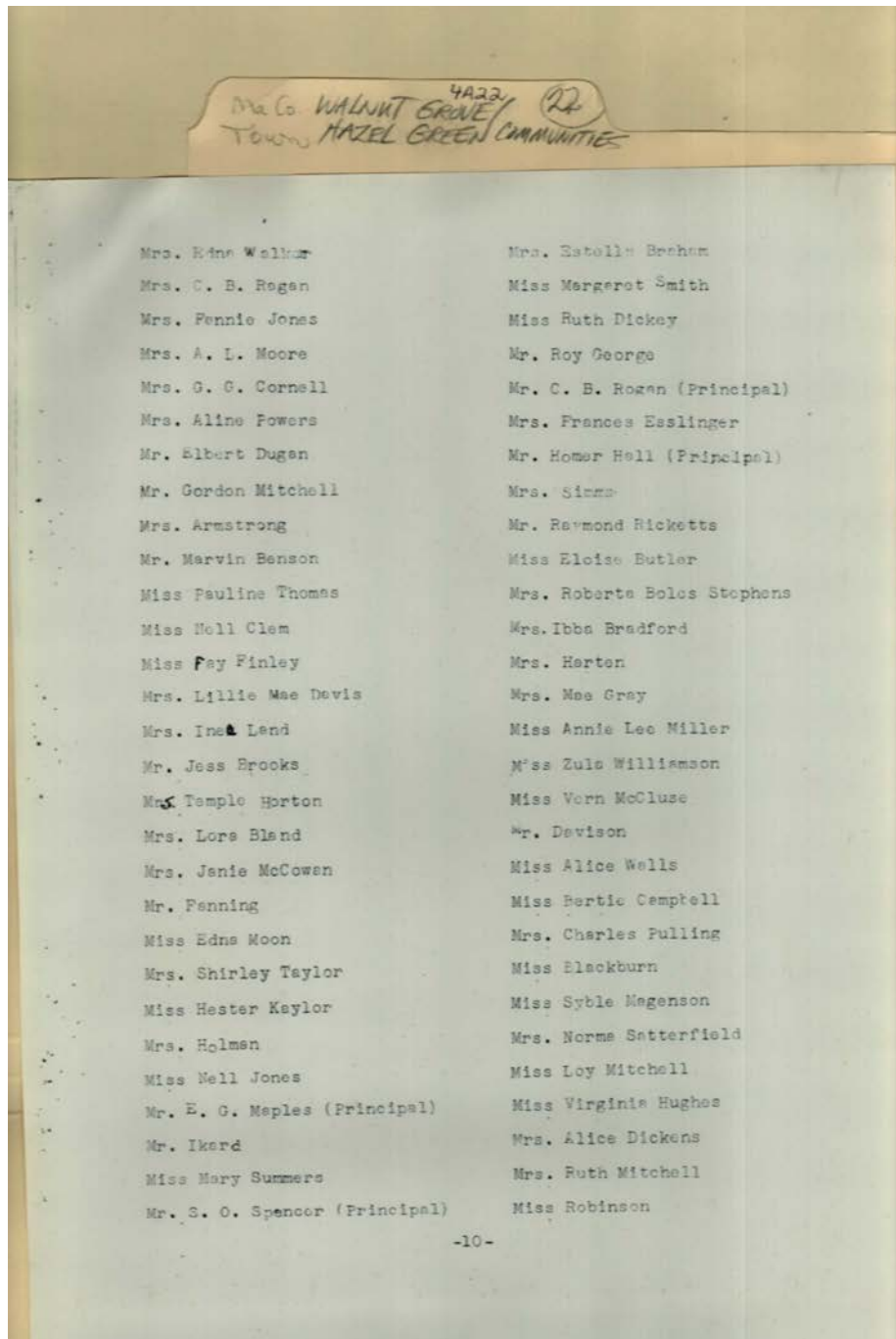
McCollum, Zeke,
Mrs.
Morris, Loy, Mrs.
Satterfield, C. C.
Slayton, Vera
Solberg, Oscar
Spelce, Buck
Stephens, Hazel, Mrs.
Stewart, Adell, Mrs.
Swafford, Floyd

Swafford, Gordon
Taylor, Henry
Teachers
Thomason, Ada Jane
Trustees
Walnut Grove
Lunchroom
Warden, R. F.
West, Jean

Types:

essay

History of Walnut Grove Community



Names:

- | | | | |
|----------------------|-----------------------|----------------------|------------------------|
| Armstrong, Mrs. | Davison, | Horton, Temple, Mrs. | Miller, Annie Lee |
| Benson, Marvin | Dickens, Alice | Hughes, Virginia | Mitchell, Gordon |
| Blackburn, Miss | Dickey, Ruth | Ikard, | Mitchell, Loy |
| Bland, Lora | Dugan, Elbert | Jones, Fannie | Mitchell, Ruth |
| Bradford, Ibba, Mrs. | Esslinger, Frances | Jones, Nell | Moon, Edna |
| Braham, Estelle | Fanning, | Kaylor, Hester | Moore, A. L., Mrs. |
| Brooks, Jess | Finley, Fay | Land, Inez | Powers, Aline |
| Butler, Eloise | George, Roy | Magenson, Syble | Pulling, Charles, Mrs. |
| Campbell, Bertie | Gray, Mae | Maples, E. G. | Regan, C. B., Mrs. |
| Clem, Nell | Hall, Homer Principal | Principal | Ricketts, Raymond |
| Cornell, G. G., Mrs. | Harton, Mrs. | McCluse, Vern | Robinson, Miss |
| Davis, Lillie Mae | Holman, Mrs. | McCowan, Janie | |

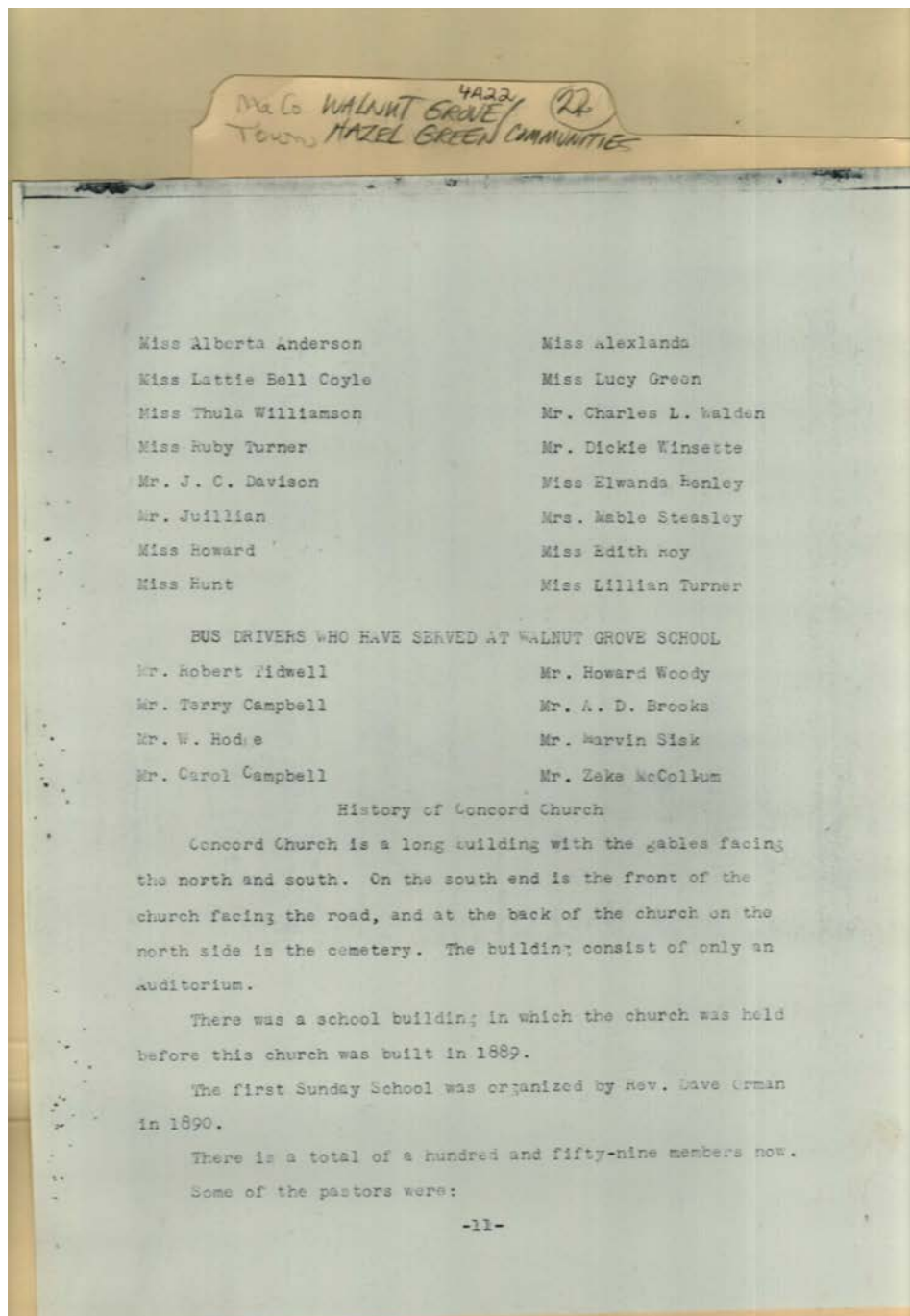
Rogan, C. B.,
Principal
Satterfield, Norma
Simms, Mrs.

Smith, Margaret
Spencer, S. O.,
Principal

Stephens, Roberta
Boles
Summers, Mary
Taylor, Shirley

Thomas, Pauline
Walker, Edna
Walls, Alice
Williamson, Zula

Types:
essay



Names:

Alexlanda, Miss
Anderson, Alberta
Brooks, A. D.
Bus Drivers
Campbell, Carol
Campbell, Terry
Concord Church

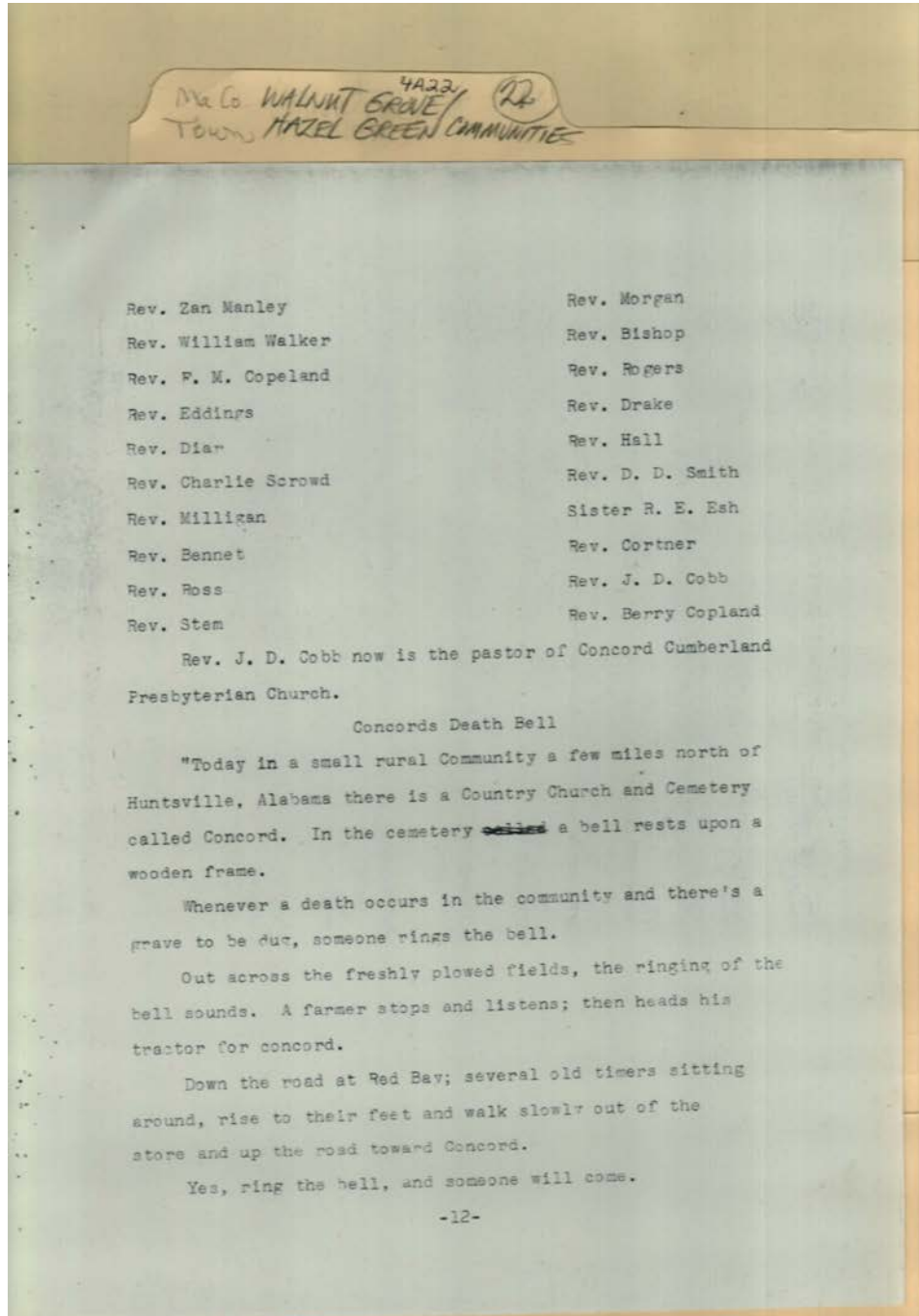
Coyle, Lattie Bell
Davison, J. C.
Green, Lucy,
Henley, Elwanda
Hodge, W.
Howard, Miss
Hunt, Miss

Jullian,
McCollum, Zeke
Orman, Dave, Rev.
Roy, Edith
Sisk, Marvin
Steasley, Mable
Tidwell, Robert

Turner, Lillian
Turner, Ruby
Walden, Charles L.
Williamson, Thula
Winsette, Dickie
Woody, Howard

Types:

essay



Names:

Bennet, Rev.
Bishop, Rev.
Cobb, J. D., Rev.
Concord Death Bell
Copeland, F. M., Rev
Copland, Barry, Rev.

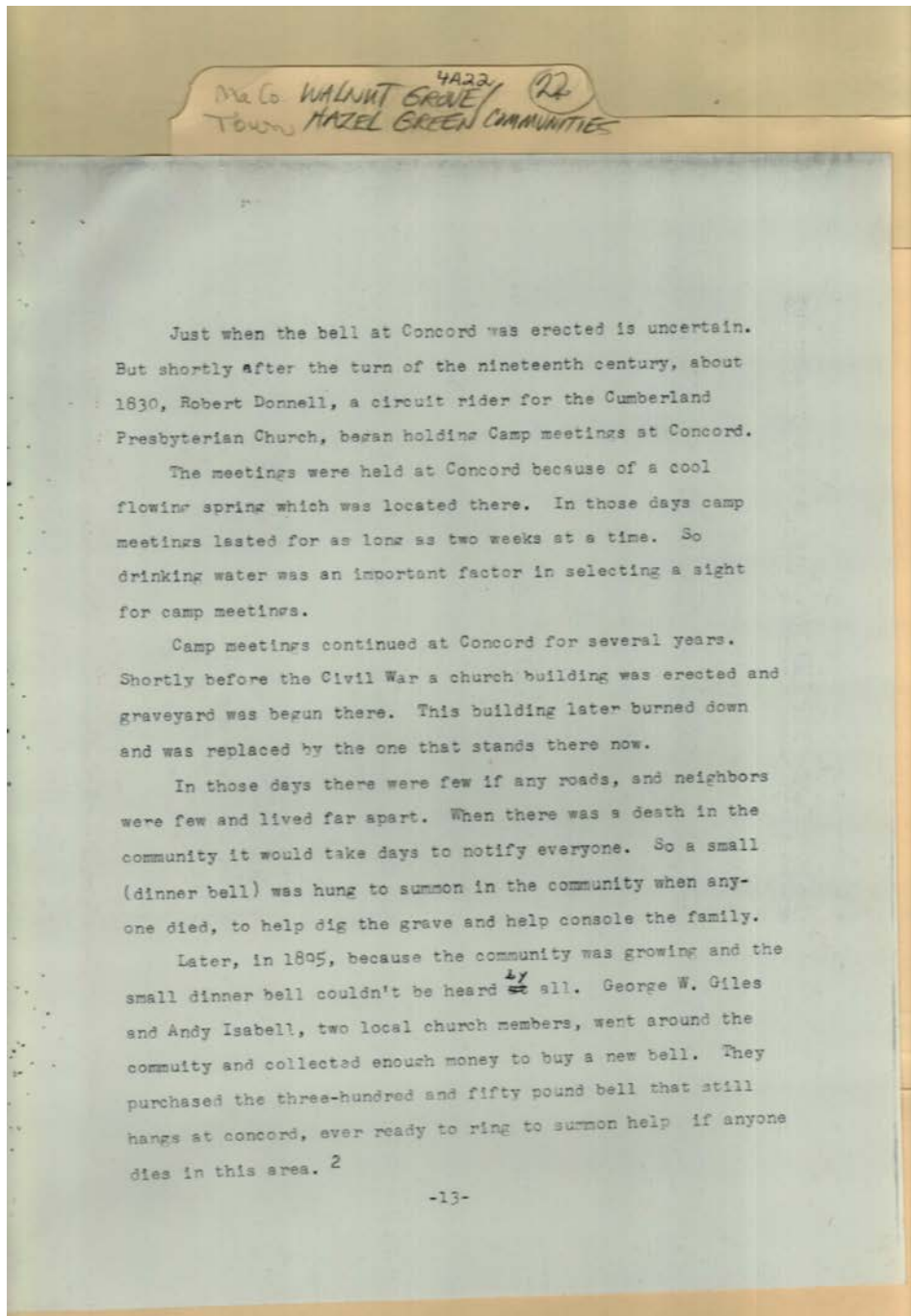
Cortner, Rev.
Diar, Rev.
Drake, Rev.
Eddings, Rev.
Esh, R. E., Sister
Hall, Rev.

Manley, Zan, Rev.
Milligan, Rev.
Morgan, Rev.
Rogers, Rev.
Ross, Rev.
Scrowd, Charlie, Rev.

Smith, D. D., Rev.
Stem, Rev.
Walker, William, Rev.

Types:

essay



Names:

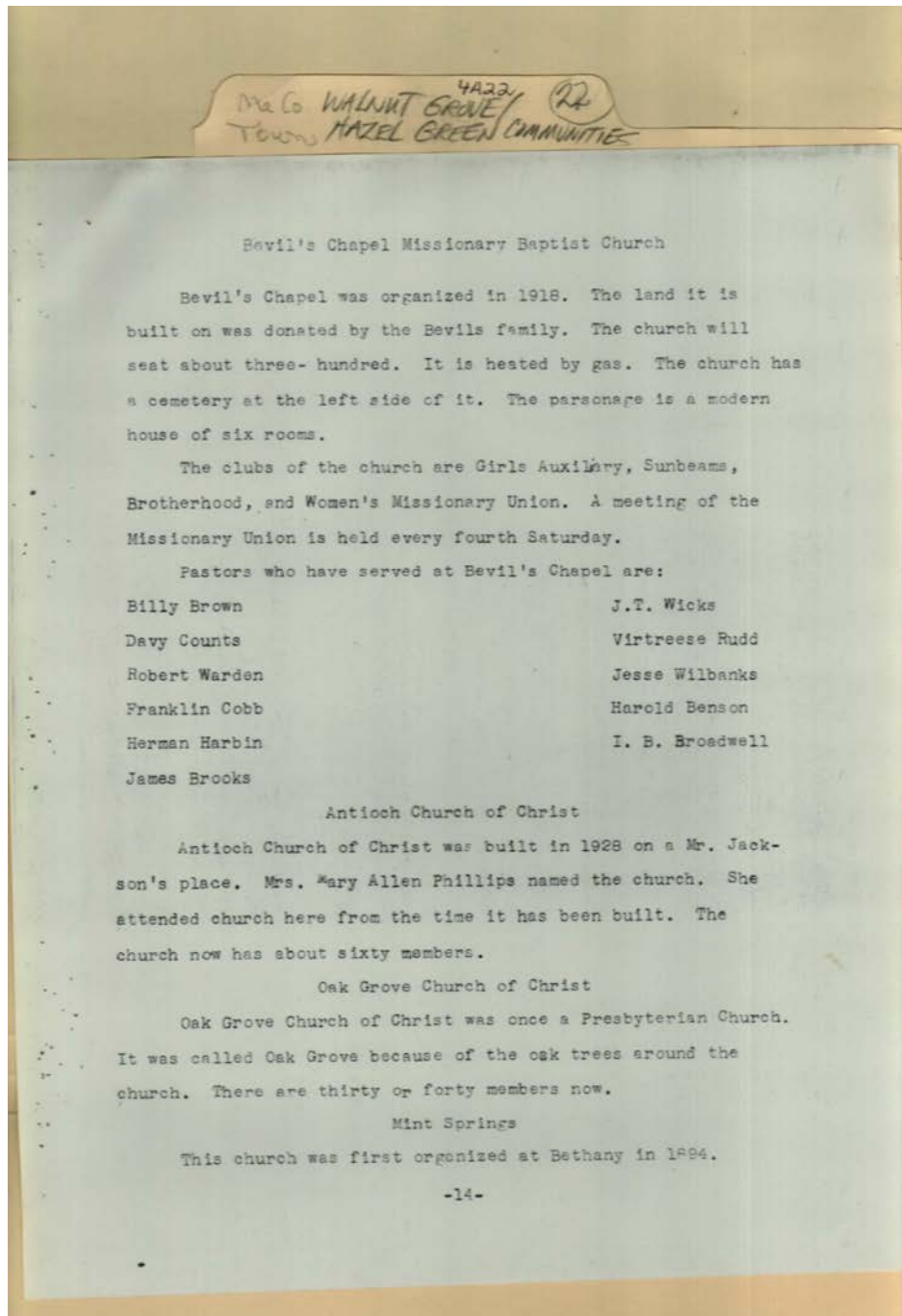
Donnell, Robert

Giles, George W.

Isabell, Andy

Types:

essay



Names:

Antioch Church of Christ
Benson, Harold
Bevil's Chapel Baptist Church

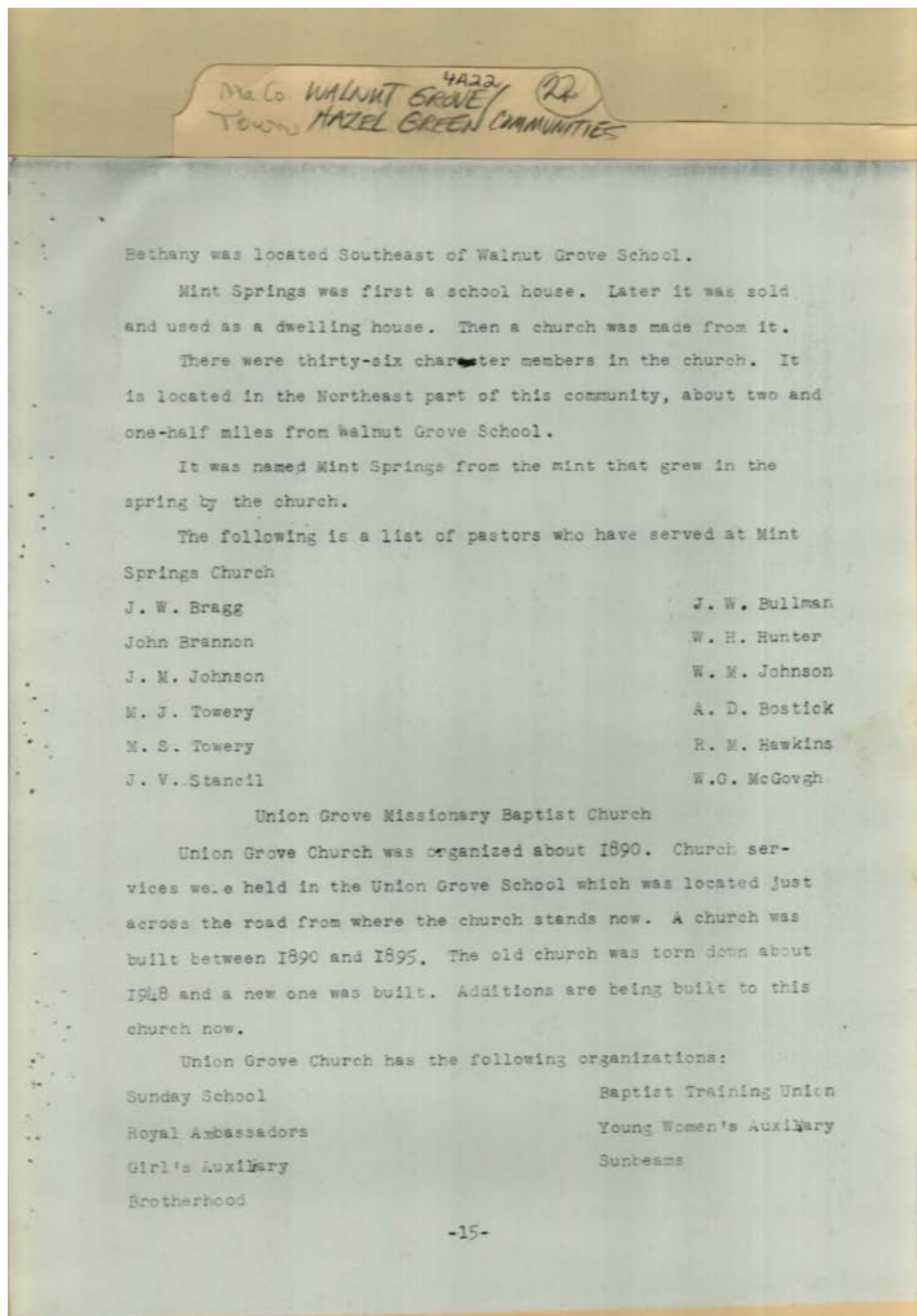
Broadwell, I. B.
Brooks, James
Brown, Billy
Cobb, Franklin
Counts, Davy

Harbin, Herman
Jackson,
Mint Springs Church
Oak Grove Church of Christ

Phillips, Mary Allen
Rudd, Virtreese
Warden, Robert
Wicks, J. T.
Wilbanks, Jesse

Types:

essay



Names:

Bostick, A. D.
Bragg, J. W.
Brannon, John
Bullman, J. W.

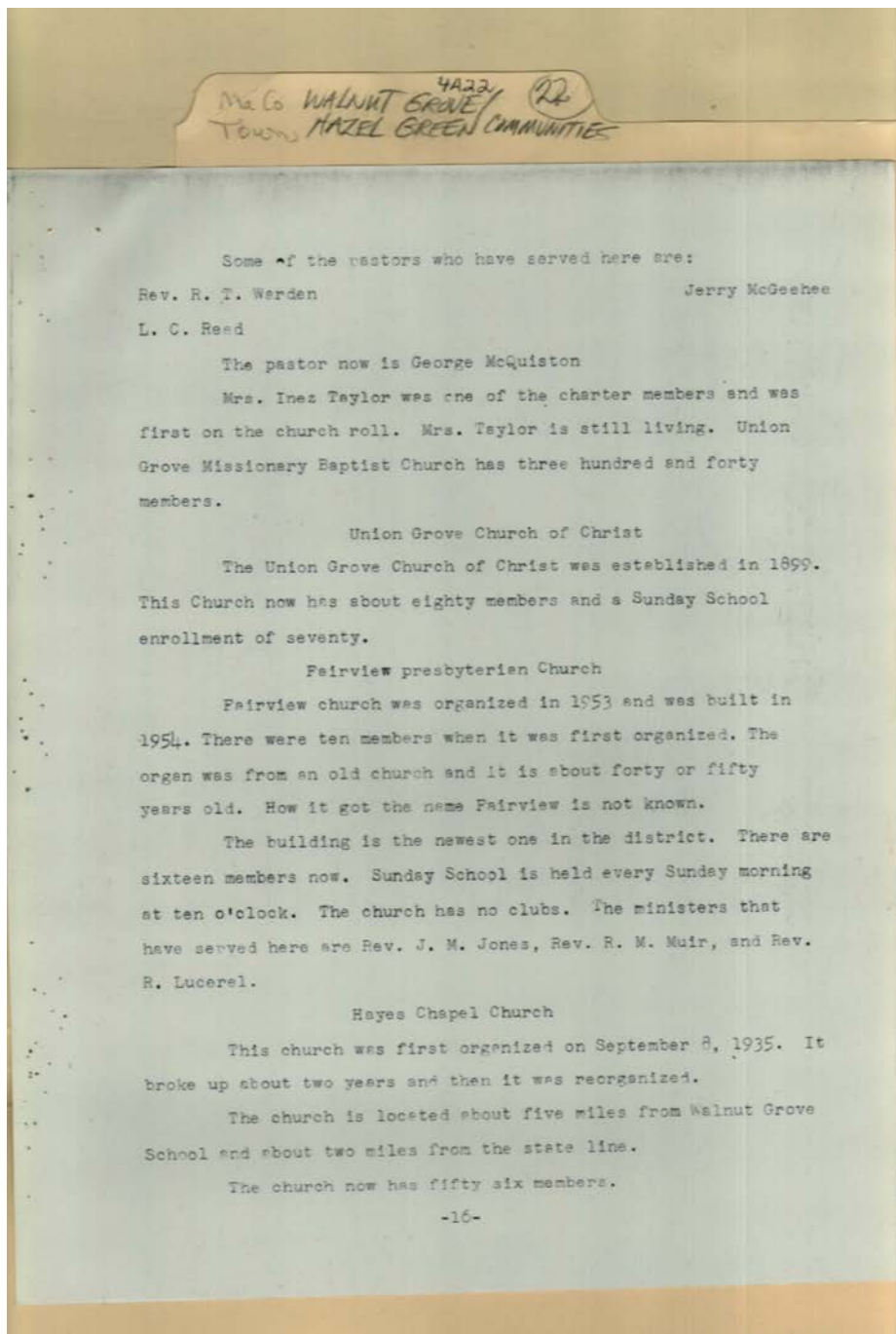
Hawkins, R. M.
Hunter, W. H.
Johnson, J. M.
Johnson, W. M.

McGovgh, W. G.
Stancil, J. V.
Towery, M. J.
Towery, M. S.

Union Grove Baptist
Church

Types:

essay



Names:

Fairview Presbyterian Church
Hays Chapel Church
Jones, J. M., Rev.

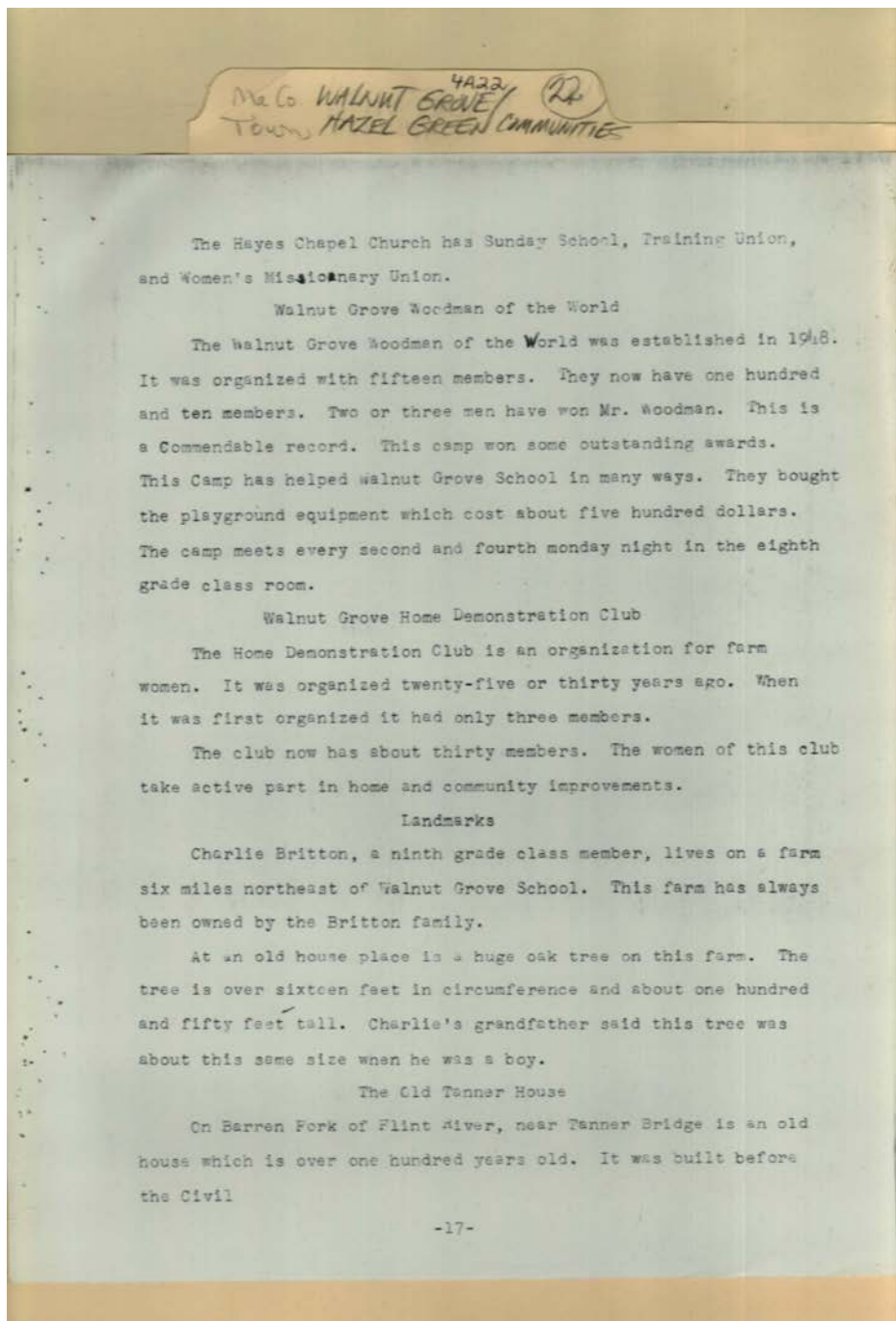
Lucerel, R., Rev.
McGeehee, Jerry,
Rev.

McQuiston, George,
Rev.
Muir, R. M. , Rev.
Reed. L. C., Rev.

Taylor, Inez
Union Grove Church
of Christ
Warden, R. T., Rev.

Types:

essay



Names:

Britton, Charlie

Home Demonstration
Club

Old Tanner House

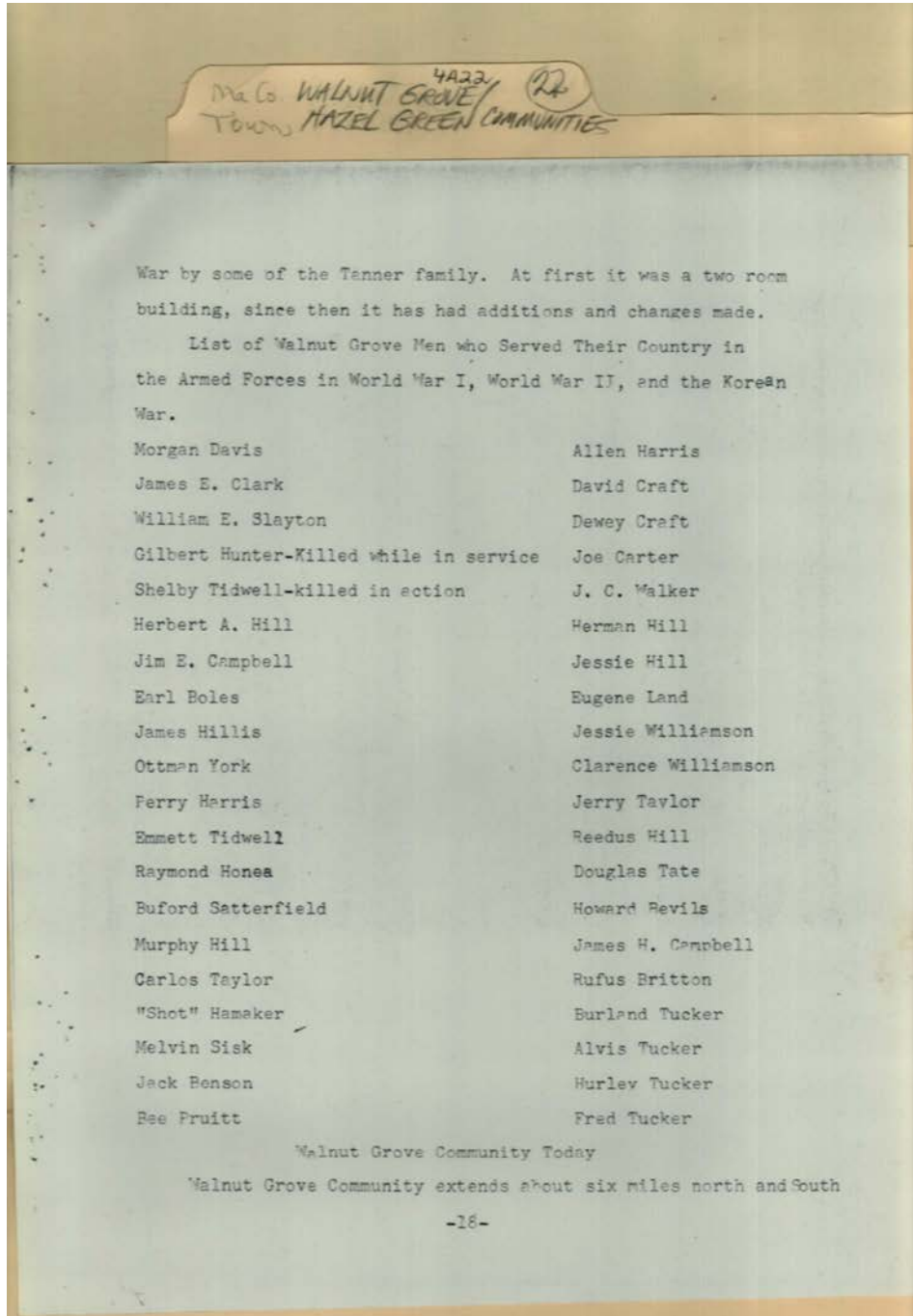
Woodman of the
World

Types:

essay

History of Walnut Grove Community

Image 19 r04a22-22-000-0036 [Contents](#) [Index](#) [About](#)



Names:

Armed Forces from
Walnut Grove
Benson, Jack
Bevils, Howard
Boles, Earl
Britton, Rufus
Campbell, James H.
Campbell, Jim E.
Carter, Joe
Clark, James E.
Craft, David

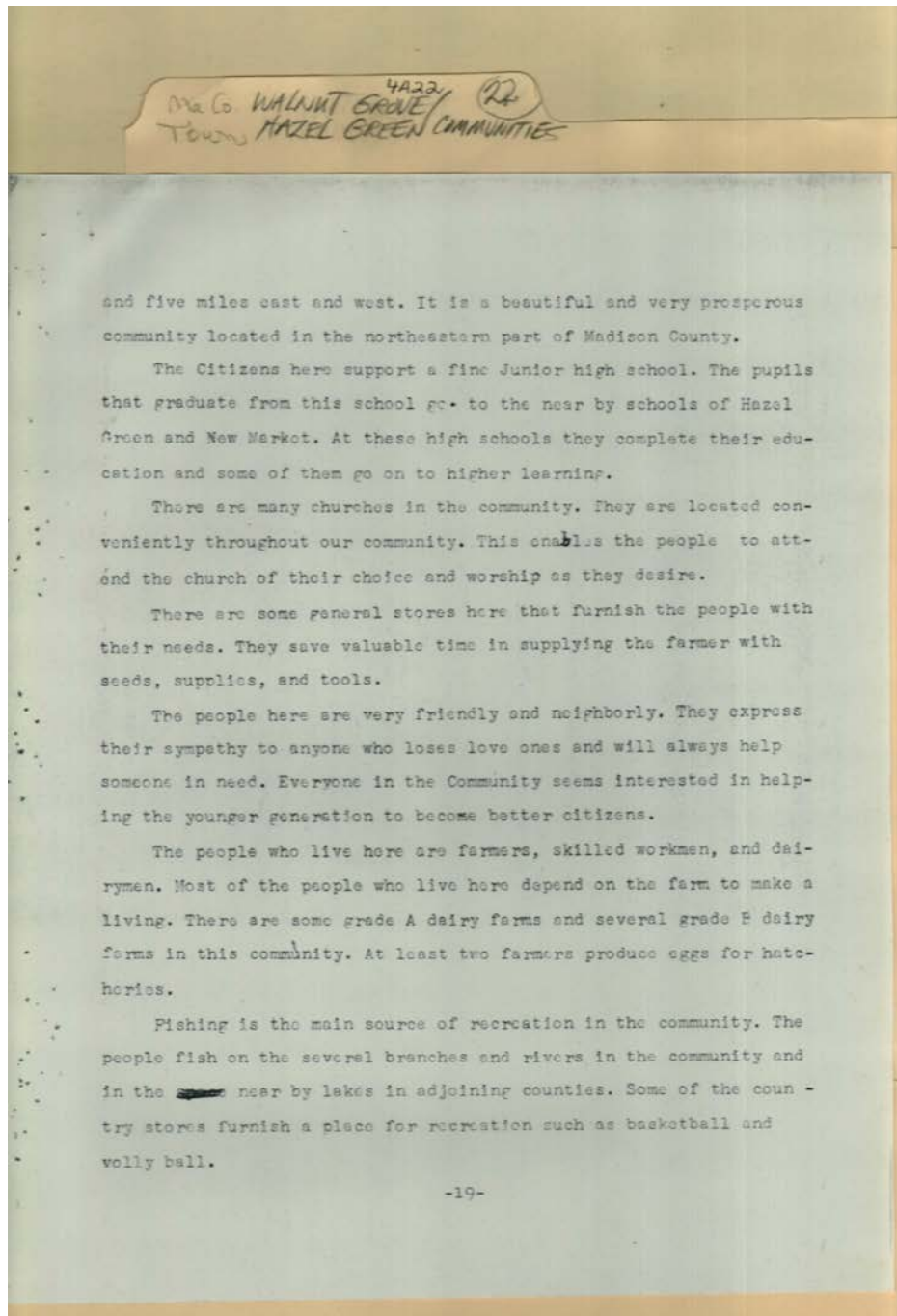
Craft, Dewey
Davis, Morgan
Hamaker, Shot
Harris, Allen
Harris, Perry
Hill, Herbert A.
Hill, Herman
Hill, Jessie
Hill, Murphy
Hill, Reedus
Hillis, James

Honea, Raymond
Hunter, Gilbert
Land, Eugene
Pruitt, Bee
Satterfield, Buford
Sisk, Melvin
Slayton, William E.
Tate, Douglas
Taylor, Carlos
Taylor, Jerry
Tidwell, Emmett

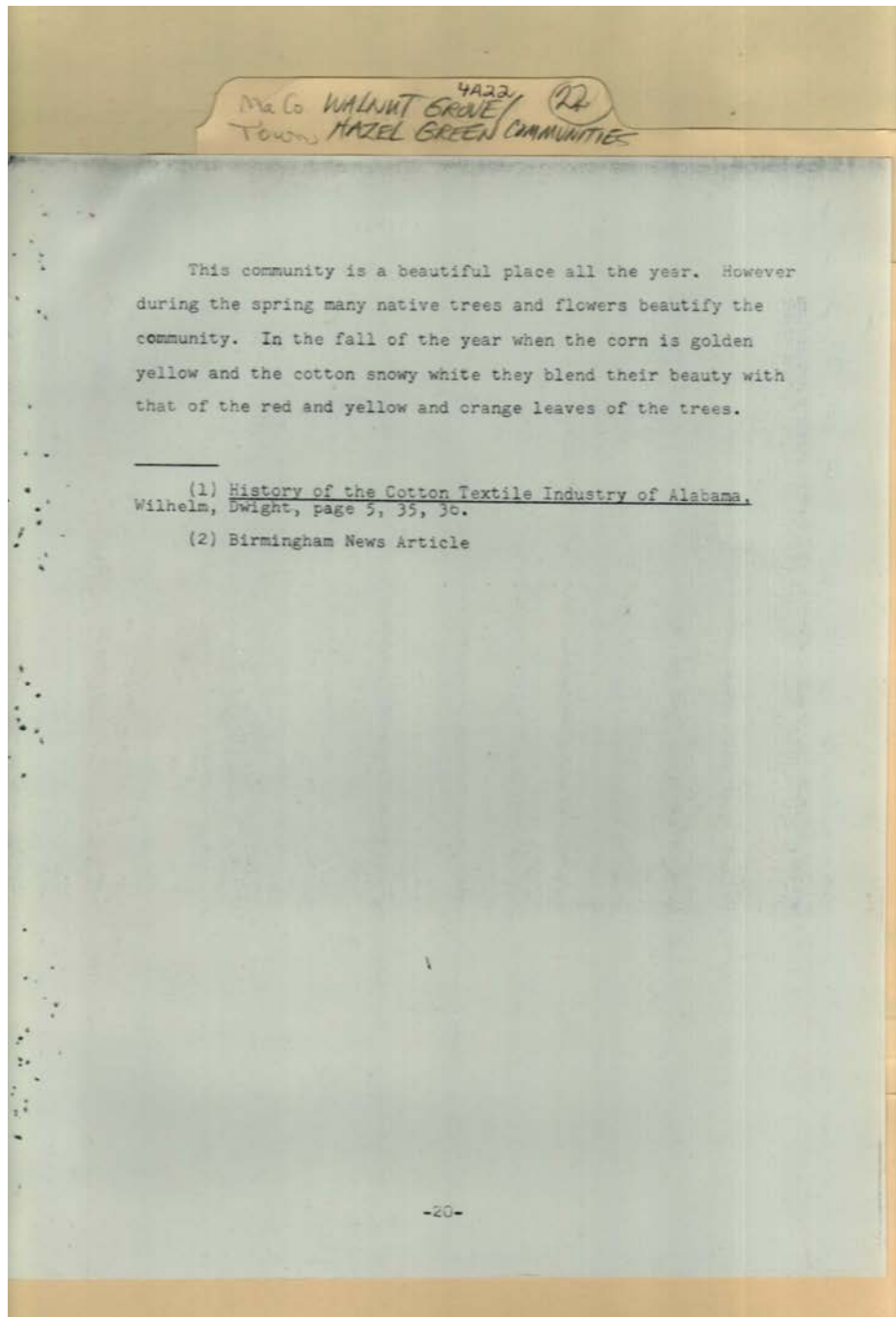
Tidwell, Shelby
Tucker, Alvis
Tucker, Burland
Tucker, Fred
Tucker, Hurley
Walker, J. C.
Williamson, Clarence
Williamson, Jessie
York, Ottman

Types:

essay



Types:
essay



Names:

History of Textiles in
Alabama

Types:

essay



Names:

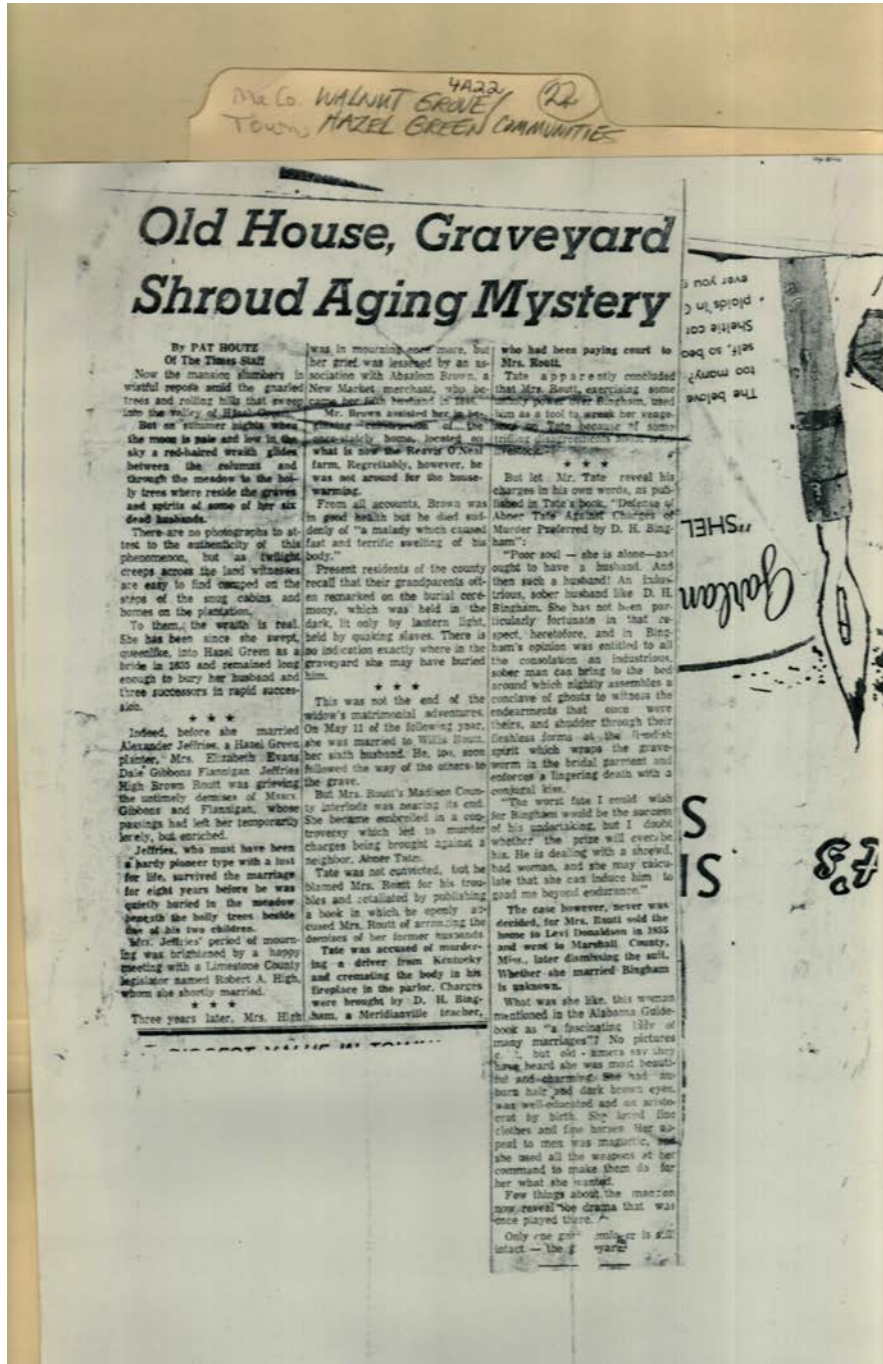
Red-Haired wraith

Places:

Hazel Green, AL

Types:

photo



Names:

Bingham, D. H.
Brown, Absalom
Brown, Elizabeth
Dale, Elizabeth
Donaldson, Levi

Evans, Elizabeth
Flannigan, Elizabeth
Gibbons, Elizabeth
High, Elizabeth
High, Robert A.

Houtt, Willis
Houtz, Pat
Jefferies, Alexander
Jefferies, Elizabeth
O'Neal, Reavis

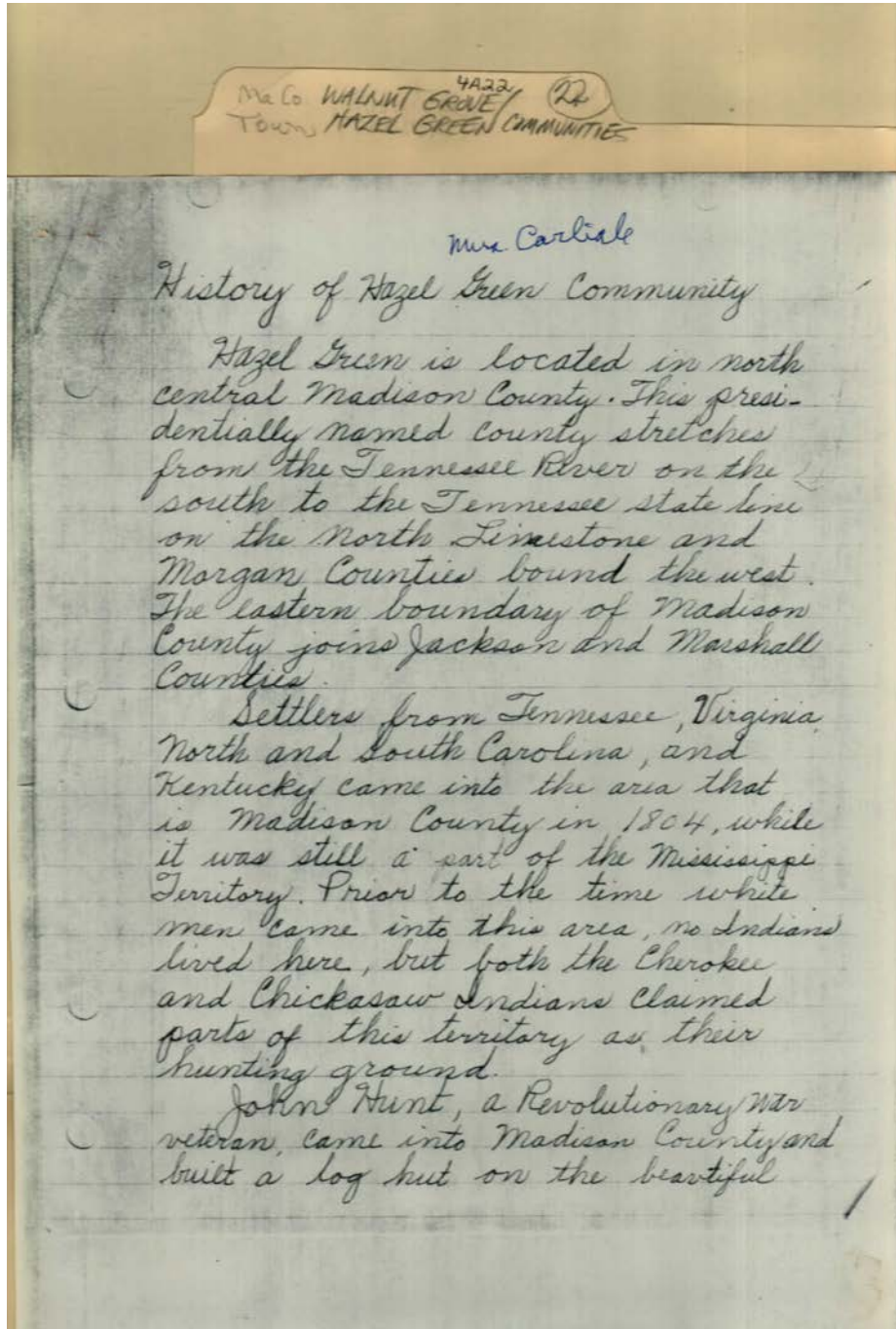
Routt, Elizabeth
Tate, Abner
Huntsville Times

Places:

Huntsville, AL

Types:

newspaper



Names:

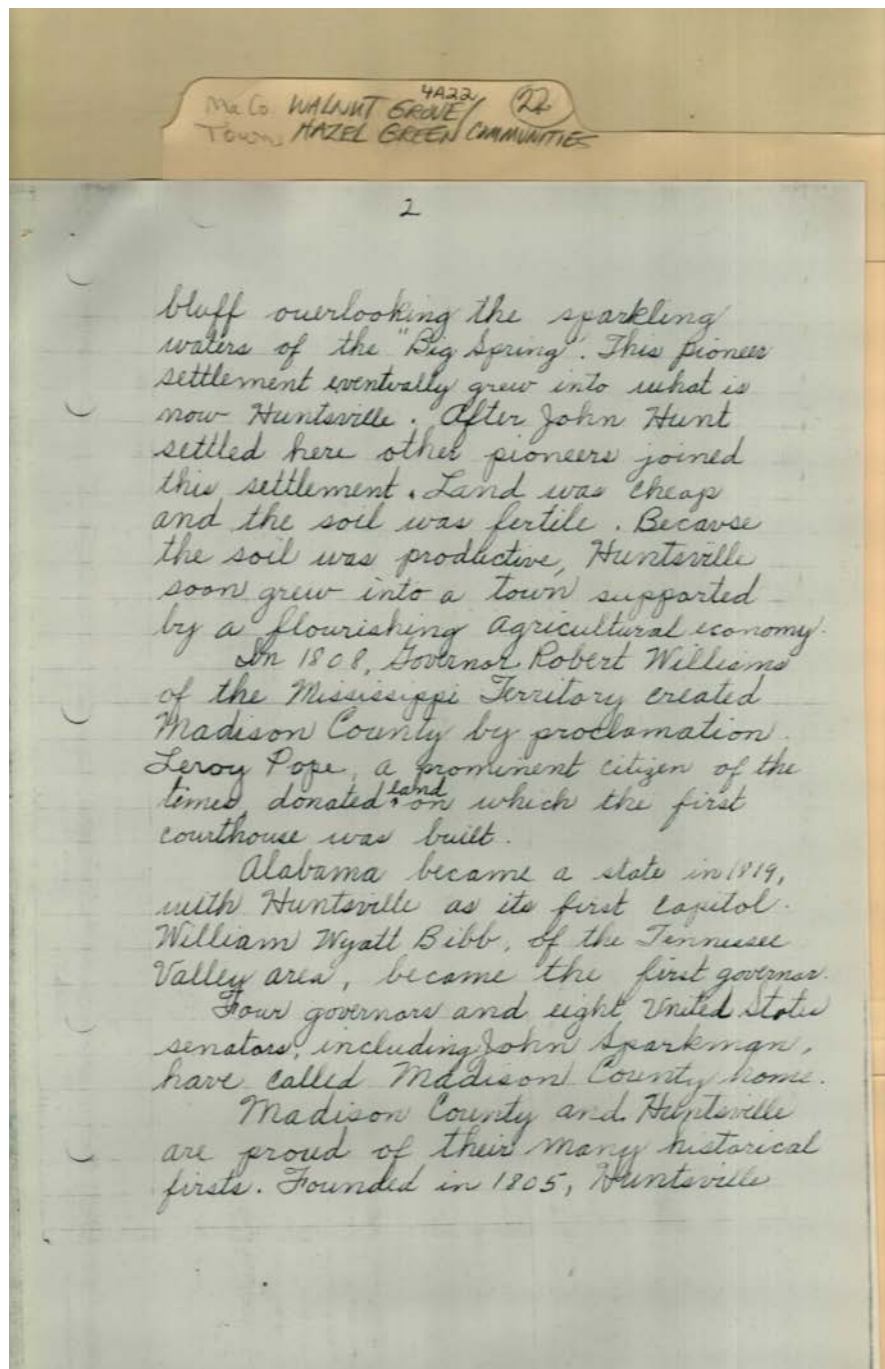
Carlisle, Mrs.

Hazel Green History

Hunt, John

Types:

essay



Names:

Bibb, William Wyatt

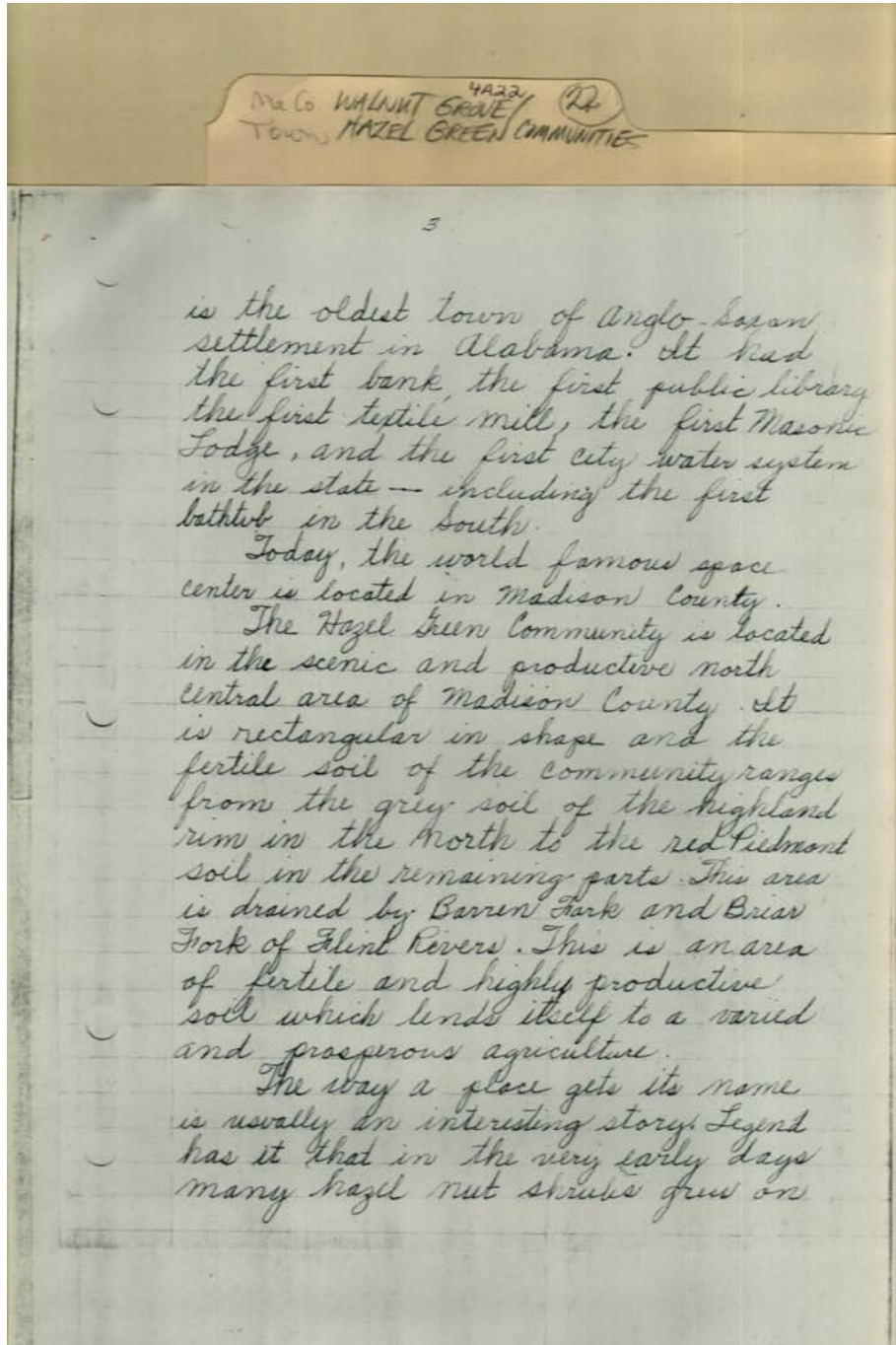
Pope, LeRoy

Sparkman, John

Williams, Robert

Types:

essay



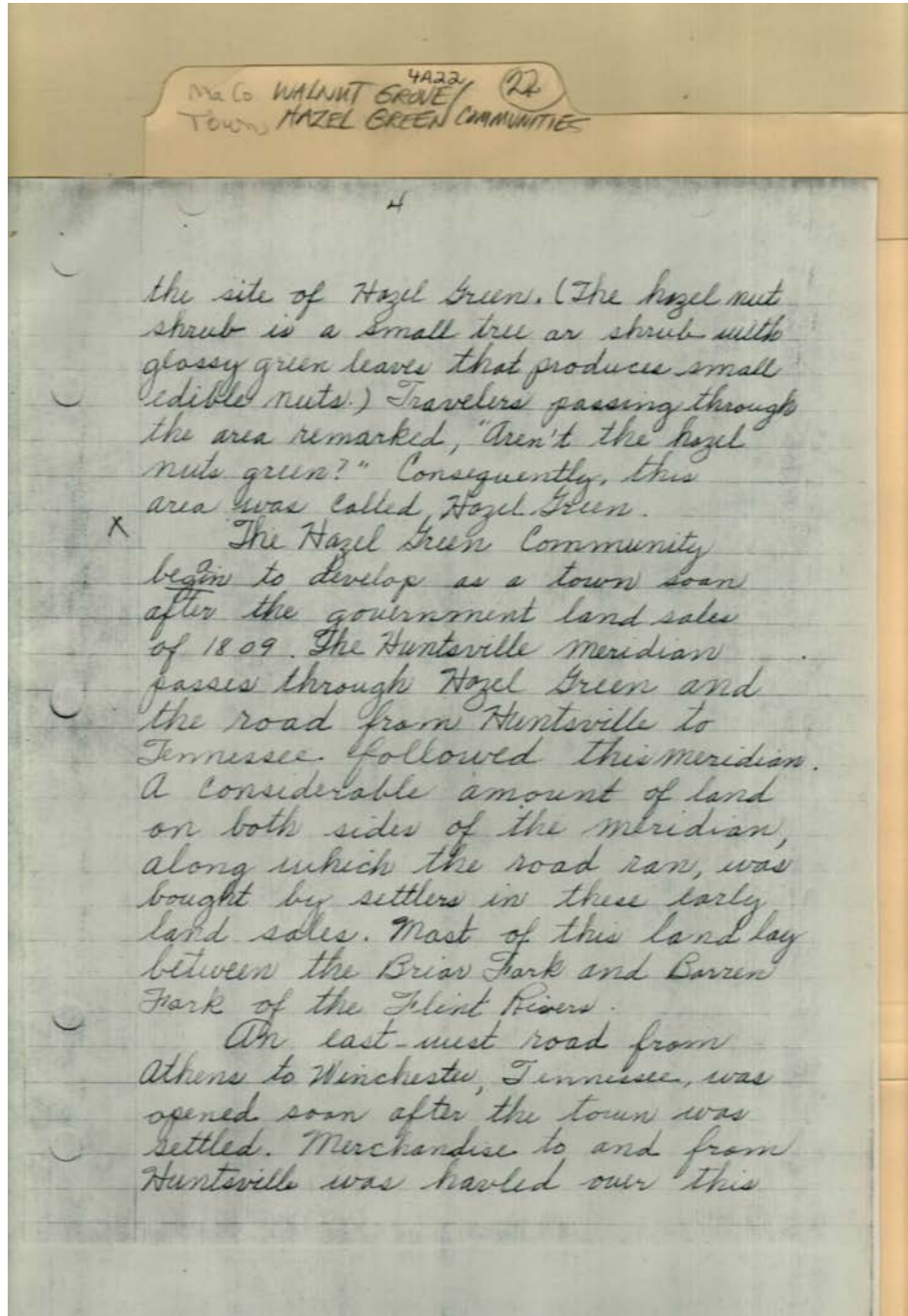
Names:

Barren Fork of Flint
River

Briar Fork of Flint
River

Types:

essay



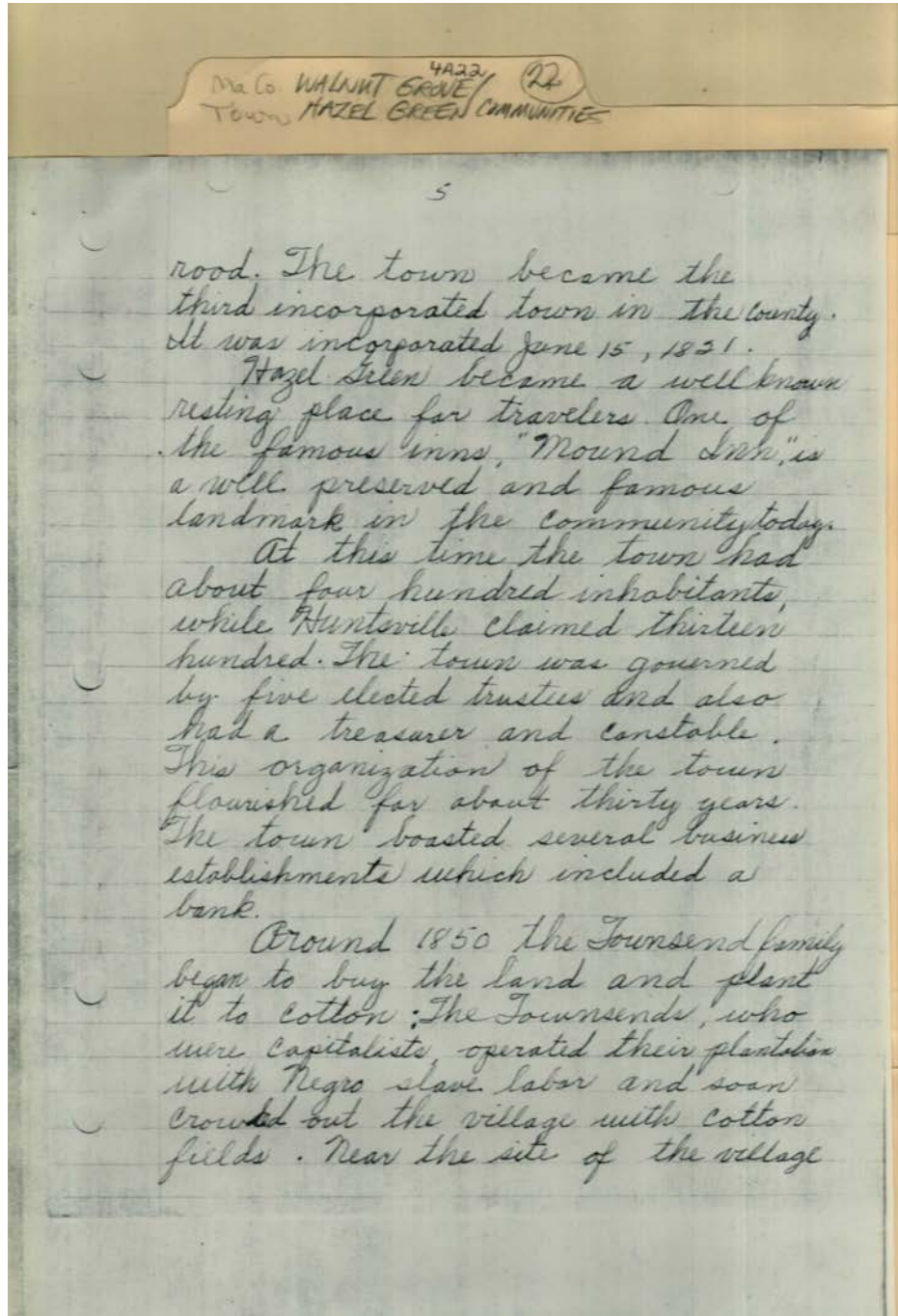
Names:

Hazel Nuts

Huntsville Meridian

Types:

essay



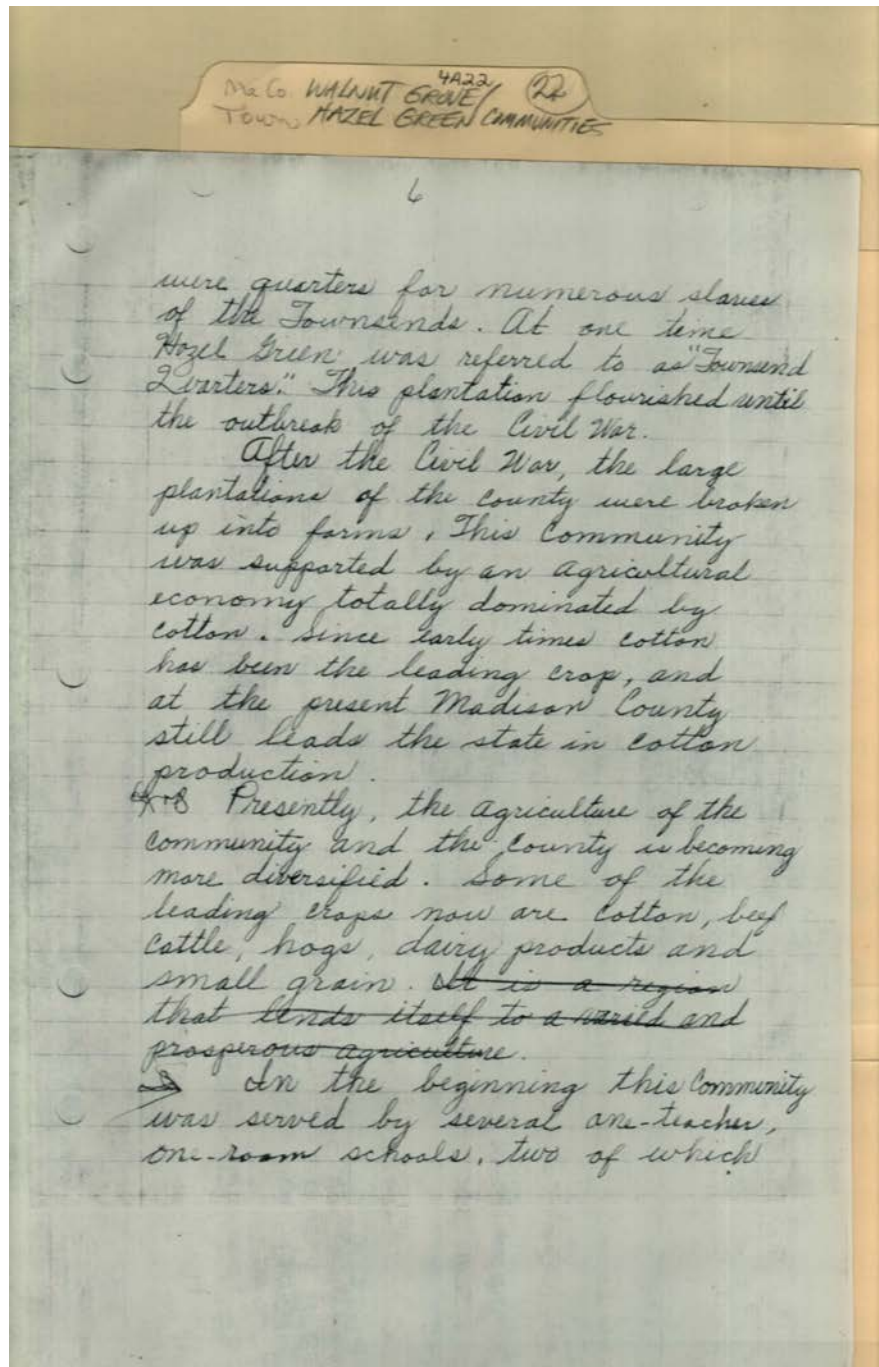
Names:

Townsend,

Mound Inn

Types:

essay



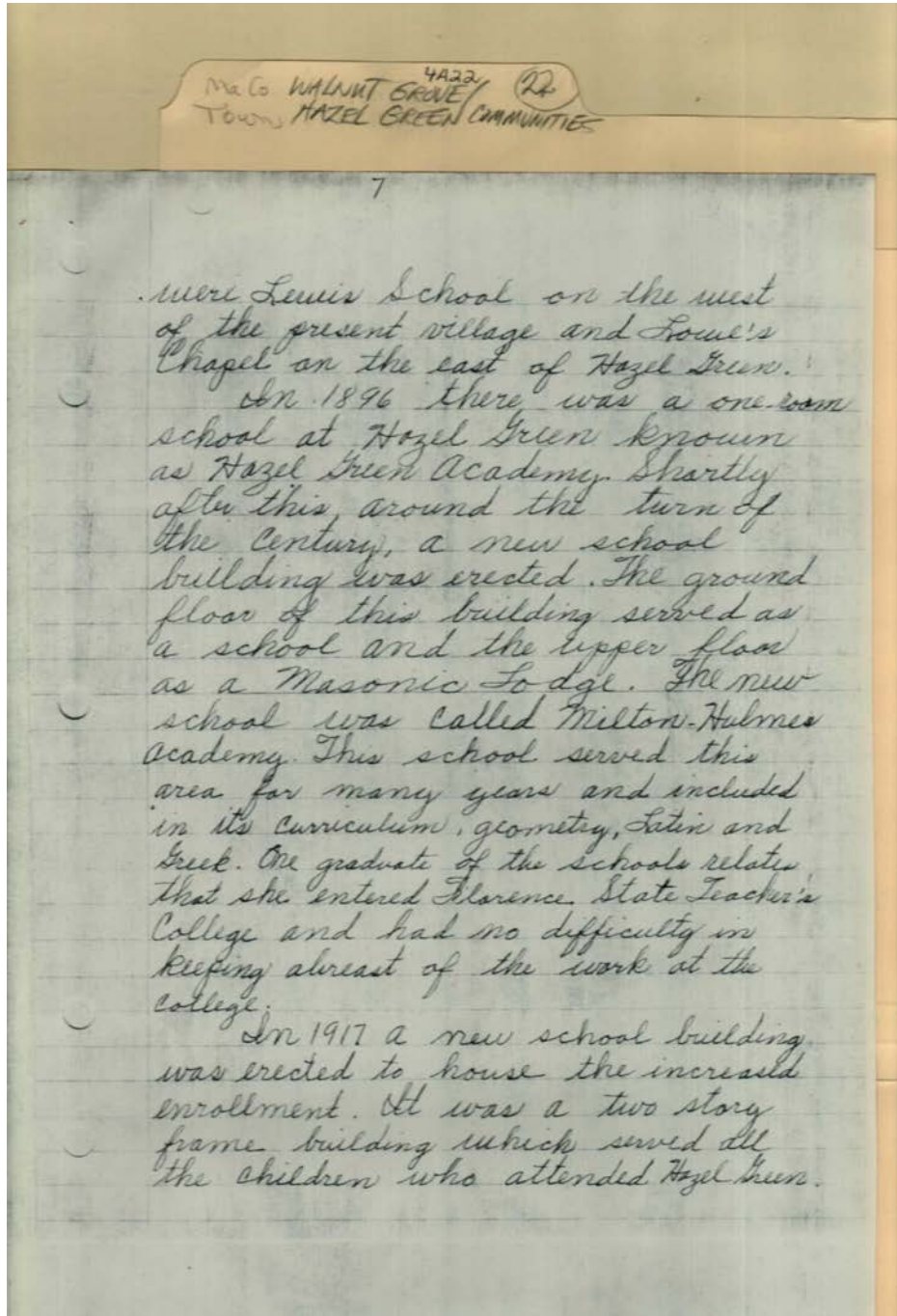
Names:

Townsends Quarters

Townsends,

Types:

essay



Names:

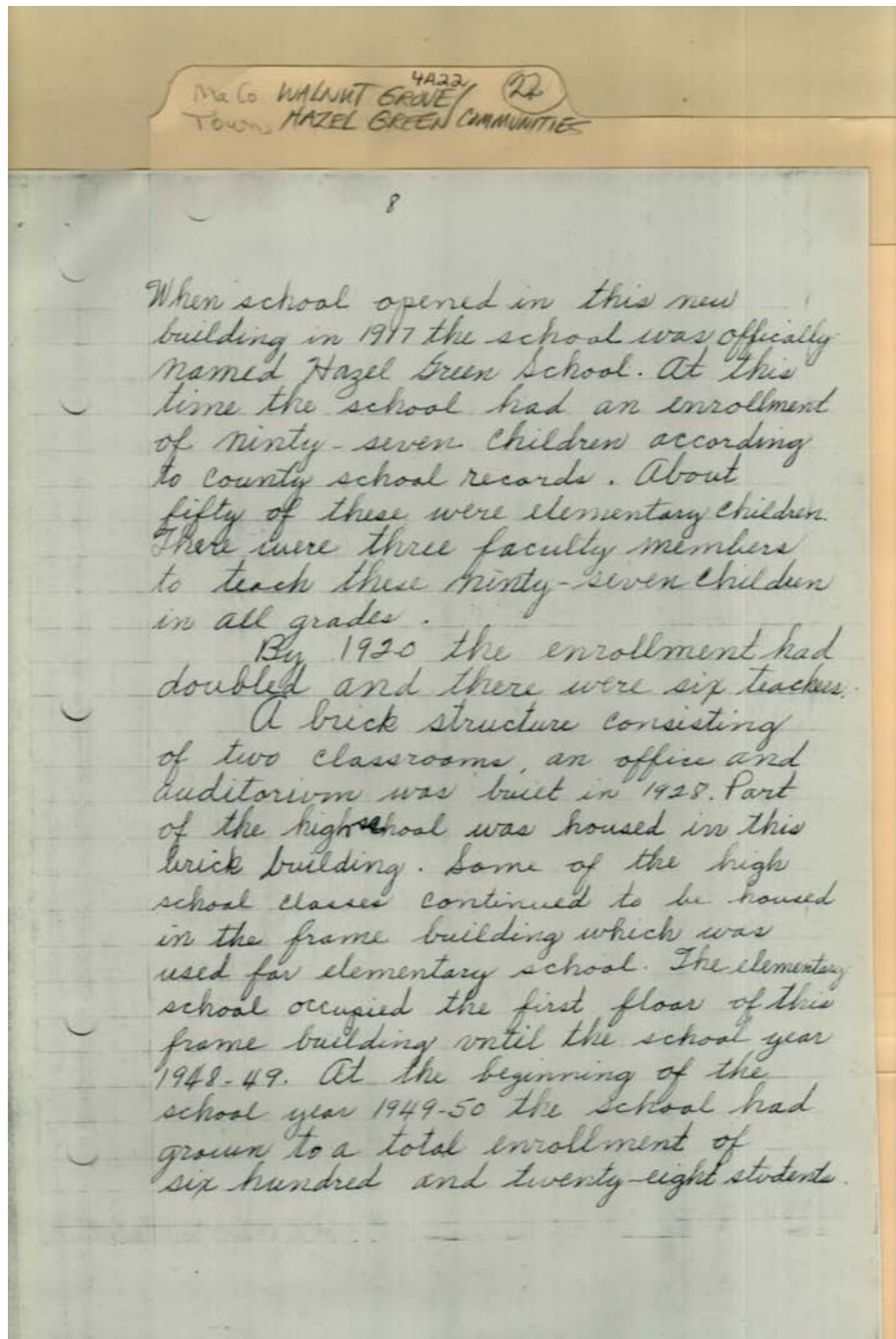
Hazel Green
Academy

Lewis School
Lowe's Chapel

Milton Hulmes
Academy

Types:

essay



Names:

Hazel Green School

Types:

essay

4A22 (22)
Me Co WALNUT GROVE
Town HAZEL GREEN COMMUNITIES

9

who were housed in a cement block building completed in 1949 ~~the~~ 1950

Three hundred and eleven of these were elementary children. ~~There~~ ^{at this time} There were six elementary teachers. ~~These~~ Children occupied a cement block building completed in 1949. This building has eight classrooms, a small reading room, two bathrooms and an office. A connecting lunchroom, that served all the school, was also a part of this building. Some junior high and high school students had classes in this building.

In 1964 with the construction of a new high school building and a rapid increase in enrollment, the fifth and sixth grades were moved into the junior high building.

At present, the cement block building houses the first four grades.

At the beginning of the 1967-68 school year a new lunch room was completed, and the old lunch room was converted into an elementary library.

Before 1955 the economy of this area was ~~an~~ agricultural.

the school has grown rapidly on the last decade due to the change to indent

the school has grown rapidly on the last decade due to the change to indent

Types:
essay

10

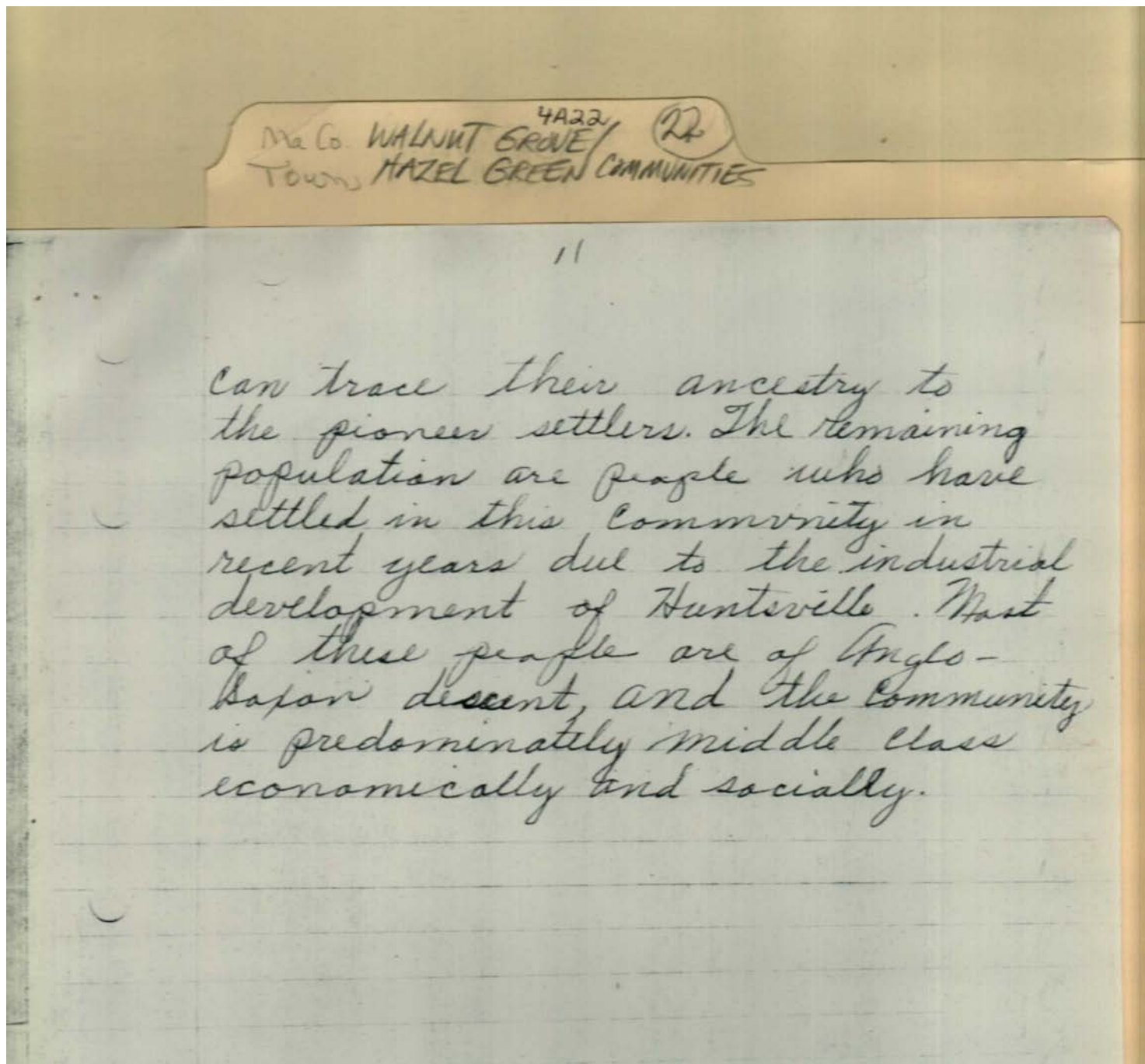
4A22 (22)
 Mc Co. WALNUT GROVE
 Town HAZEL GREEN COMMUNITIES

economy. Between 1955 and 1960, with the development of the space center in Huntsville, the economy of the community began to change. Today Hazel Green is supported mainly by the industrial jobs in the county. Slightly less than ~~that~~ ^{fifty} percent of the parents of elementary children are employed in industry. About one-third are employed in services and near one-seventh of the people are employed in agriculture. Less than one percent are professionally employed.

Hazel Green is a prosperous and growing community. It is served by several churches. At present many new business establishments are locating here. Among the businesses operating here now are grocery stores, filling stations, a motor company, two restaurants, a hardware store, two barber shops, beauty parlors, a dry cleaning plant, a ceramic shop and others. ^{of Hazel Green}

More than half of the people

Types:
 essay



11

can trace their ancestry to the pioneer settlers. The remaining population are people who have settled in this community in recent years due to the industrial development of Hunterville. Most of these people are of Anglo-Baxon descent, and the community is predominately middle class economically and socially.

Types:
essay

Frances Cabaniss Roberts Collection: Series 4, Subseries A, Box 22, Folder 22

History of Walnut Grove Community

[Contents](#) [Index](#) [About](#)

Table of Contents

[Image 1](#) (r04a22-22-000-0018)

[Image 2](#) (r04a22-22-000-0019)

[Image 3](#) (r04a22-22-000-0020)

[Image 4](#) (r04a22-22-000-0021)

[Image 5](#) (r04a22-22-000-0022)

[Image 6](#) (r04a22-22-000-0023)

[Image 7](#) (r04a22-22-000-0024)

[Image 8](#) (r04a22-22-000-0025)

[Image 9](#) (r04a22-22-000-0026)

[Image 10](#) (r04a22-22-000-0027)

[Image 11](#) (r04a22-22-000-0028)

[Image 12](#) (r04a22-22-000-0029)

[Image 13](#) (r04a22-22-000-0030)

[Image 14](#) (r04a22-22-000-0031)

[Image 15](#) (r04a22-22-000-0032)

[Image 16](#) (r04a22-22-000-0033)

[Image 17](#) (r04a22-22-000-0034)

[Image 18](#) (r04a22-22-000-0035)

[Image 19](#) (r04a22-22-000-0036)

[Image 20](#) (r04a22-22-000-0037)

[Image 21](#) (r04a22-22-000-0038)

[Image 22](#) (r04a22-22-000-0039)

[Image 23](#) (r04a22-22-000-0040)

[Image 24](#) (r04a22-22-000-0041)

[Image 25](#) (r04a22-22-000-0042)

[Image 26](#) (r04a22-22-000-0043)

[Image 27](#) (r04a22-22-000-0044)

[Image 28](#) (r04a22-22-000-0045)

[Image 29](#) (r04a22-22-000-0046)

[Image 30](#) (r04a22-22-000-0047)

[Image 31](#) (r04a22-22-000-0048)

[Image 32](#) (r04a22-22-000-0049)

[Image 33](#) (r04a22-22-000-0050)

[Image 34](#) (r04a22-22-000-0051)

[Table of Contents](#)

[Name & Place Index](#)

[About the Collection](#)

Name & Place Index

Alexlanda, Miss [12](#)
Anderson, Alberta [12](#)
Antioch Church of Christ [15](#)
Armed Forces from Walnut Grove [19](#)
Armstrong, Mrs. [11](#)
Barren Fork of Flint River [6](#), [26](#)
Bates, Tom [7](#)
Bennet, Rev. [13](#)
Benson, Harold [15](#)
Benson, Jack [19](#)
Benson, Marvin [11](#)
Bevil's Chapel Baptist Church [15](#)
Bevils School [9](#)
Bevils, Howard [19](#)
Bevils, Math [10](#)
Bibb, William Wyatt [25](#)
Bingham, D. H. [23](#)
Bishop, Rev. [13](#)
Blackburn, Miss [11](#)
Bland, Lora [11](#)
Bobo, Harry [10](#)
Boles, Earl [19](#)
Boles, Earnest [10](#)
Boles, Lula [10](#)
Bostick, A. D. [16](#)
Bradford, Ibba, Mrs. [11](#)
Brady, A. D., Jr. [7](#)
Bragg, J. W. [16](#)
Braham, Estelle [11](#)
Brannon, John [16](#)
Briar Fork of Flint River [26](#)
Britton, Charlie [18](#)
Britton, Rufus [19](#)
Britton, [7](#)
Broadwell, I. B. [15](#)
Brooks, A. D. [12](#)
Brooks, James [15](#)
Brooks, Jess [11](#)
Brown, Absalom [23](#)
Brown, Billy [15](#)
Brown, Elizabeth [23](#)
Bullman, J. W. [16](#)
Bus Drivers [12](#)
Butler, Eloise [11](#)
Butler, S. R. [9](#)
Buzzard Roost School [7](#)
Cabiness, Charles [3](#)
Cabiness, [3](#)
Cagle, Joe [1](#)
Cagle, Tom [1](#)
Campbell, Bertie [11](#)
Campbell, Carol [10](#), [12](#)
Campbell, Frances, Mrs. [10](#)
Campbell, J. R. [10](#)
Campbell, James H. [19](#)
Campbell, Jim E. [19](#)
Campbell, Terry [12](#)
Campbell, [1](#)
Carlisle, Mildred, Mrs. [10](#)
Carlisle, Mrs. [24](#)
Carlisle, Ralph, Mrs. [2](#)
Carmical, Mrs. [6](#)
Carriger, J. A. [3](#)
Carter, J. W. [4](#), [10](#)
Carter, Joe [19](#)
Cherokee Indians [1](#)
Clark, James E. [19](#)
Clem, Nell [11](#)
Cobb, Alta, Mrs. [10](#)
Cobb, Franklin [15](#)
Cobb, J. D., Rev. [13](#)
Concord Church [12](#)
Concord Death Bell [13](#)
Concord School [7](#)
Copeland, F. M., Rev. [13](#)
Copland, Barry, Rev. [13](#)
Cornell, G. G., Mrs. [11](#)
Cortner, Rev. [13](#)
Counts, Davy [15](#)
Coyle, Lattie Bell [12](#)
Craft, David [19](#)
Craft, Dewey [19](#)
Creeks [4](#)
Crowson, Eddie Lee [7](#)
Dale, Elizabeth [23](#)
Davis, Al [10](#)
Davis, Lillie Mae [11](#)
Davis, Morgan [19](#)
Davison, J. C. [12](#)
Davison, [11](#)
Diar, Rev. [13](#)
Dickens, Alice [11](#)
Dickey, Ruth [11](#)
Donaldson, Levi [23](#)
Donnell, Robert [14](#)
Drake, Rev. [13](#)
Dugan, Elbert [11](#)
Eddings, Rev. [13](#)
Elyes, Hub, Mrs. [10](#)
Esh, R. E., Sister [13](#)
Esslinger, Frances [11](#)
Evans, Elizabeth [23](#)
Fairview Presbyterian Church [17](#)
Fanning, [11](#)

Ferrel, [1](#)
Finley, Fay [11](#)
Flannigan, Elizabeth [23](#)
Fletcher, William [5](#)
Fouth, Elmo [10](#)
Fowler, Uncle Bud [1](#)
Fowler, [1](#)
Gentry, J. A. [1](#)
George, Roy [11](#)
Gibbons, Elizabeth [23](#)
Giles, George W. [14](#)
Graham, Will [7](#)
Gray, Glancy [4](#)
Gray, Mae [11](#)
Green, Lucy, [12](#)
Griffin, [4](#)
Hall, Ed [7](#), [8](#)
Hall, Homer Principal [11](#)
Hall, Rev. [13](#)
Hamaker, Shot [19](#)
Hamaker, [1](#)
Harbin, Herman [15](#)
Harris, Allen [19](#)
Harris, Perry [19](#)
Harton, Mrs. [11](#)
Hawkins, R. M. [16](#)
Hays Chapel Church [17](#)
Hazel Green Academy [30](#)
Hazel Green History [24](#)
Hazel Green School [31](#)
Hazel Green, AL [22](#)
Hazel Nuts [27](#)
Henley, Elwanda [12](#)
High, Elizabeth [23](#)
High, Robert A. [23](#)
Hill, Herbert A. [19](#)
Hill, Herman [19](#)
Hill, Jessie [19](#)
Hill, Murphy [19](#)
Hill, Reedus [19](#)
Hillis, James [19](#)
History of Textiles in Alabama [21](#)
Hodge, W. [12](#)
Holman, Mrs. [11](#)
Home Demonstration Club [18](#)
Honea, Raymond [19](#)
Horton, Temple, Mrs. [11](#)
Houtt, Willis [23](#)
Houtz, Pat [23](#)
Howard, Bud [5](#)
Howard, Miss [12](#)
Hughes, I. B., Mrs. [10](#)
Hughes, Virginia [11](#)
Hughes, Warnie [10](#)
Hunt, John [24](#)
Hunt, Miss [12](#)
Hunter, Gilbert [19](#)
Hunter, W. H. [16](#)
Huntsville Meridian [27](#)
Huntsville Times [23](#)
Huntsville, AL [23](#)
Hyde School, [7](#)
Ikard, [11](#)
Isabell, Andy [14](#)
Jackson Route to Huntsville [5](#)
Jackson, Andrew [4](#)
Jackson, [5](#), [15](#)
Jefferies, Alexander [23](#)
Jefferies, Elizabeth [23](#)
Johnson, J. M. [16](#)
Johnson, Nona [10](#)
Johnson, W. M. [16](#)
Jones, Fannie [11](#)
Jones, J. M., Rev. [17](#)
Jones, Jim [8](#)
Jones, Midas [5](#)
Jones, Nell [11](#)
Jullian, [12](#)
Kaylor, Hester [11](#)
Kennedy, Frank [10](#)
Key, Jess [1](#)
Kilpatrick, [1](#)
Land, Eugene [19](#)
Land, Inez [11](#)
Landman, Dee [10](#)
Larkins, Fanny [8](#)
Lewis School [30](#)
Lowe's Chapel [9](#), [30](#)
Lucerel, R., Rev. [17](#)
Magenson, Syble [11](#)
Manley, Zan, Rev. [13](#)
Maples, E. G. Principal [11](#)
McCluse, Vern [11](#)
McCollum, Zeke, Mrs. [10](#)
McCollum, Zeke [12](#)
McCollum, [1](#)
McCowan, Janie [11](#)
McGeehee, Jerry, Rev. [17](#)
McGeehee, [1](#)
McGovgh, W. G. [16](#)
McQuiston, George, Rev. [17](#)
Miller, Annie Lee [11](#)
Milligan, Rev. [13](#)
Milton Hulmes Academy [30](#)
Mint Springs Church [15](#)
Mint Springs School [9](#)
Mitchell, Gordon [11](#)
Mitchell, Loy [11](#)
Mitchell, Ruth [11](#)
Moon, Edna [11](#)
Moore, A. L., Mrs. [11](#)
Morgan, Rev. [13](#)
Morris, Loy, Mrs. [10](#)
Mound Inn [28](#)
Muir, R. M. , Rev. [17](#)
O'Neal, Reavis [23](#)
Oak Grove Church of Christ [15](#)
Old Tanner House [18](#)

Orman, Dave, Rev. [12](#)
Parkson, Hugh [6](#)
Phillips, Mary Allen [15](#)
Pigram College [7](#)
Poole, C. P. [3](#)
Pope, LeRoy [25](#)
Powers, Aline [11](#)
Pruitt, Bee [19](#)
Pulling, Charles, Mrs. [11](#)
Quick's Mill [1](#)
Quick, Tobe [4](#)
Quick, [9](#)
Red-Haired wraith [22](#)
Reed. L. C., Rev. [17](#)
Regan, C. B., Mrs. [11](#)
Ricketts, Raymond [11](#)
Riddle, [1](#)
Robinson, Miss [11](#)
Rogan, C. B., Principal [11](#)
Rogers, Rev. [13](#)
Ross, Rev. [13](#)
Routt, Elizabeth [23](#)
Roy, Edith [12](#)
Rudd, Virtreese [15](#)
Satterfield, Buford [19](#)
Satterfield, C. C. [10](#)
Satterfield, Norma [11](#)
Scrowd, Charlie, Rev. [13](#)
Simms, Mrs. [11](#)
Sisk, Marvin [12](#)
Sisk, Melvin [19](#)
Slayton, Vera [10](#)
Slayton, William E. [19](#)
Sledge, [4](#)
Smith, D. D., Rev. [13](#)
Smith, Jess [7](#)
Smith, Margaret [11](#)
Smith, [1](#)
Solberg, Oscar [10](#)
Sparkman, John [25](#)
Spelce, Buck [4](#), [9](#), [10](#)
Spencer, S. O., Principal [11](#)
Stammers, Henry [5](#)
Stancil, J. V. [16](#)
Steasley, Mable [12](#)
Stem, Rev. [13](#)
Stephens, Hazel, Mrs. [10](#)
Stephens, Roberta Boles [11](#)
Stewart, Adell, Mrs. [10](#)
Sulpher Springs School [9](#)
Summers, Mary [11](#)
Swafford, Floyd [10](#)
Swafford, Gordon [10](#)
Tanner, Flossie [5](#)
Tanner, [1](#)
Tate, Abner [23](#)
Tate, Douglas [19](#)
Taylor, Carlos [19](#)
Taylor, Henry [4](#), [5](#), [10](#)
Taylor, Inez [17](#)
Taylor, Jerry [19](#)
Taylor, Shirley [11](#)
Teachers [10](#)
Thomas, Pauline [11](#)
Thomason, Ada Jane [10](#)
Thompson, [7](#)
Tidwell, Emmett [19](#)
Tidwell, Robert [12](#)
Tidwell, Shelby [19](#)
Tidwell, [1](#)
Towery, M. J. [16](#)
Towery, M. S. [16](#)
Townsend Quarters [29](#)
Townsend, [4](#), [28](#), [29](#)
Trustees [10](#)
Tucker, Alvis [19](#)
Tucker, Burland [19](#)
Tucker, Fred [19](#)
Tucker, Hurley [19](#)
Turner, Lillian [12](#)
Turner, Ruby [12](#)
Union Grove Baptist Church [16](#)
Union Grove Church of Christ [17](#)
Union Grove Schools [8](#)
Walden, Charles L. [12](#)
Walker, Edna [11](#)
Walker, J. C. [19](#)
Walker, Mattye [7](#)
Walker, William, Rev. [13](#)
Walls, Alice [11](#)
Walnut Grove Community [1](#)
Walnut Grove Lunchroom [10](#)
Walnut Grove, AL [1](#), [2](#)
Warden, R. F. [10](#)
Warden, R. T., Rev. [17](#)
Warden, Robert [15](#)
West, Jean [10](#)
Wicks, J. T. [15](#)
Wilbanks, Jesse [15](#)
Wilhelm, Dwight M. [4](#)
Williams, Robert [25](#)
Williamson, Clarence [19](#)
Williamson, Jessie [19](#)
Williamson, Thula [12](#)
Williamson, Zula [11](#)
Winsette, Dickie [12](#)
Woodman of the World [18](#)
Woody, Howard [12](#)
Worley, [7](#)
York, Ottman [19](#)

Frances Cabaniss Roberts Collection

Preferred Citation: Frances Cabaniss Roberts Collection, Archives and Special Collections, M. Louis Salmon Library, University of Alabama in Huntsville, Huntsville, AL.

Collection Scope and Content: The Collection of 114 Linear ft. includes a total of 156 Archival Boxes. The Frances Cabaniss Roberts collection covers the historical records of the Cabaniss Roberts family. This collection contains extensive correspondence records of the Cabaniss Roberts family circa 1830 to 1930.

Archives/Special Collections Access Restrictions: None

Conditions Governing Use: This material may be protected under U. S. Copyright Law (Title 17, U.S. Code) which governs the making of photocopies or reproductions of copyrighted materials. You may use the digitized material for private study, scholarship, or research. Though the University of Alabama in Huntsville Archives and Special Collections has physical ownership of the material in its collections, in some cases we may not own the copyright to the material. It is the patron's obligation to determine and satisfy copyright restrictions when publishing or otherwise distributing materials found in our collections.

Provenance: Gift of Johanna Shields on October 28, 2006.



THE UNIVERSITY OF
ALABAMA IN HUNTSVILLE

**The UAH Archives and Special Collections
M. Louis Salmon Library**