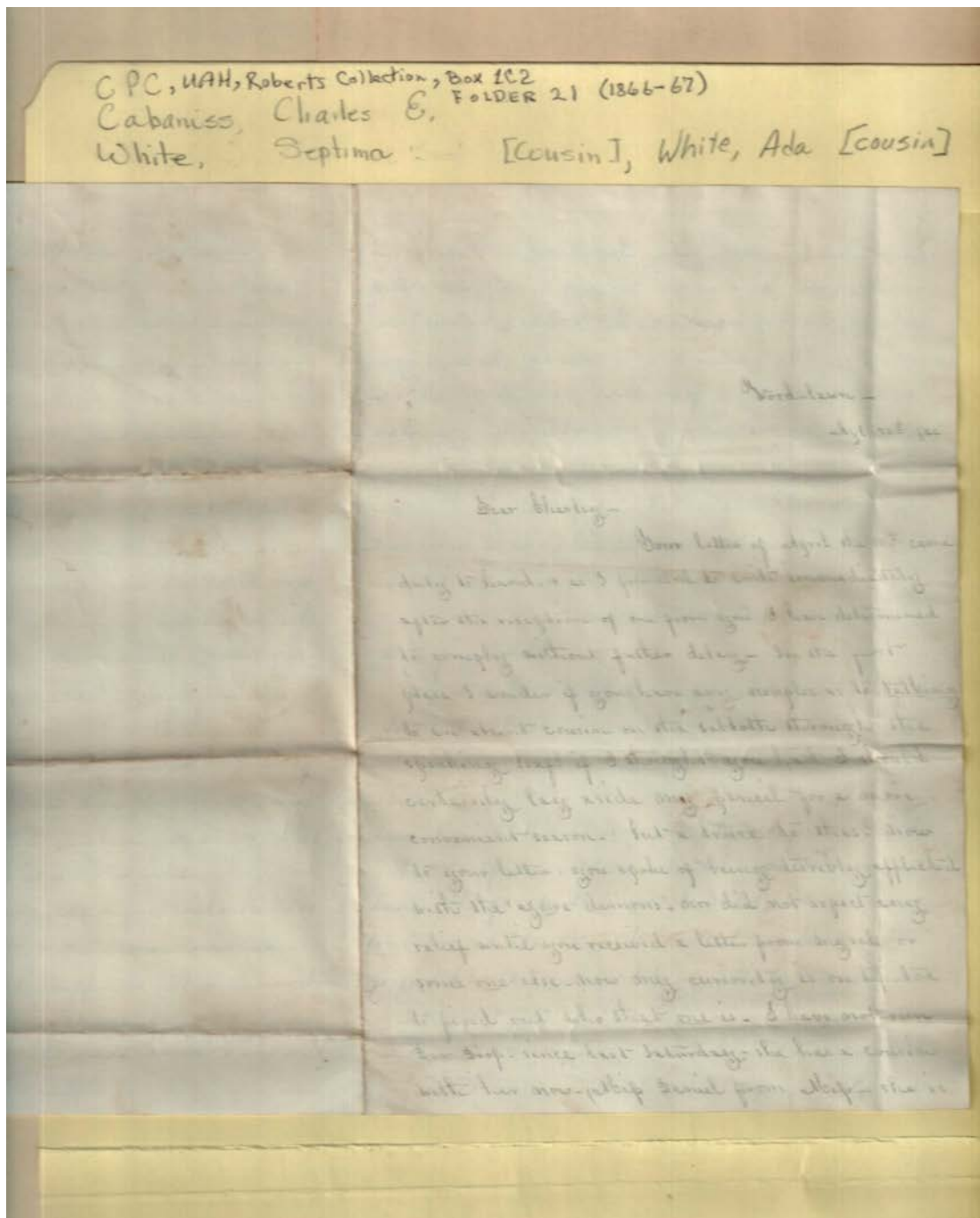


Frances Cabaniss Roberts Collection: Series 1, Subseries C, Box 2, Folder 21
White, Septima and Ada to Cabaniss, Charles Eugene, 1866-1867

Image 1 r01c02-21-000-0059 [Contents](#) [Index](#) [About](#)



Names:

, Charley

Stepto,

Places:

Woodlawn, AL

Types:

correspondence

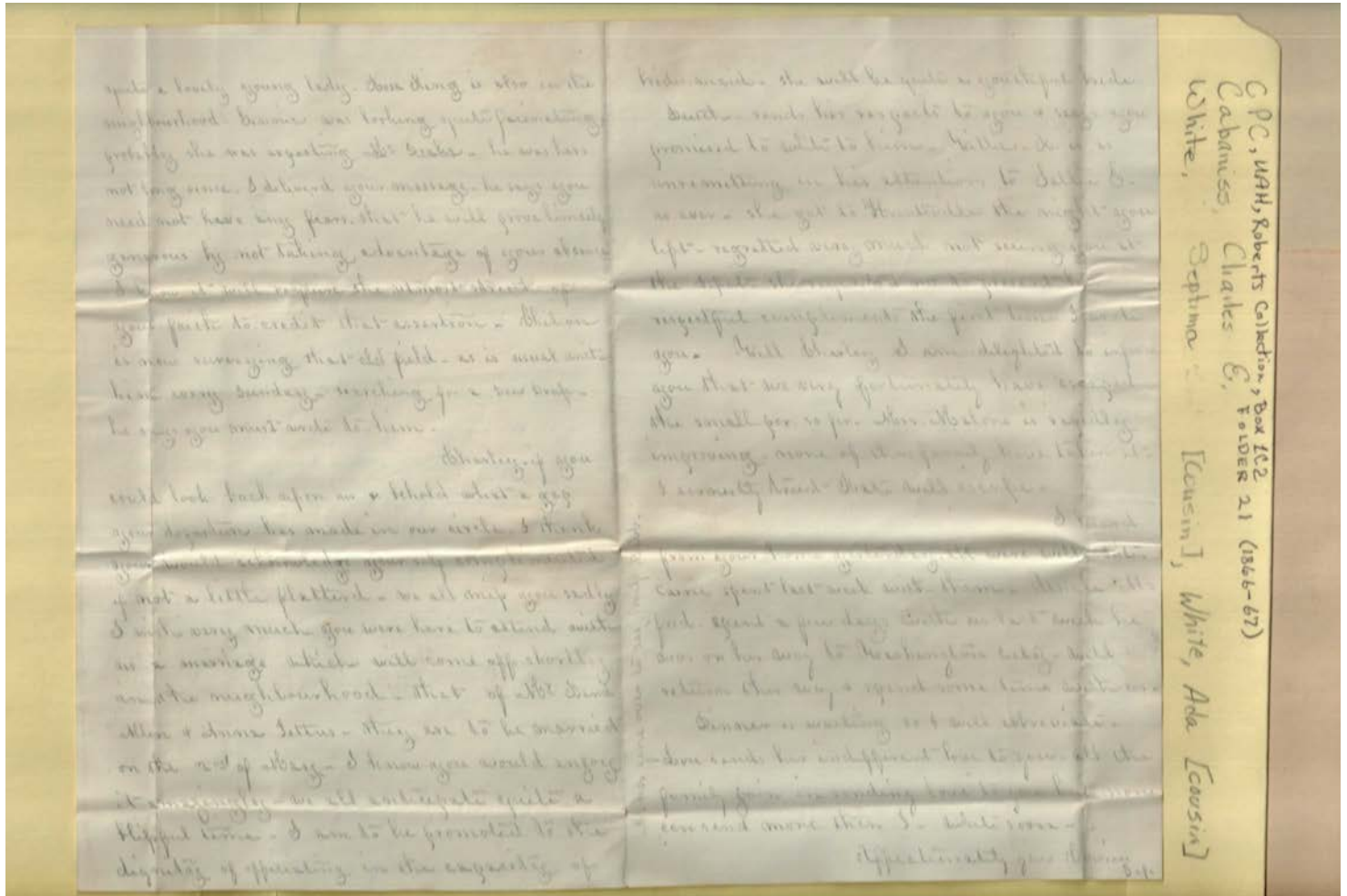
Dates:

Aug,

Frances Cabaniss Roberts Collection: Series 1, Subseries C, Box 2, Folder 21

White, Septima and Ada to Cabaniss, Charles Eugene, 1866-1867

Image 2 r01c02-21-000-0060 [Contents](#) [Index](#) [About](#)



Names:

, Carrie
, Charley
, Chilion

, Ginnie
, Lou
, Malone

, Sallie S.
, Willie
Allen, G.

King, Tom
Pettus, Anna

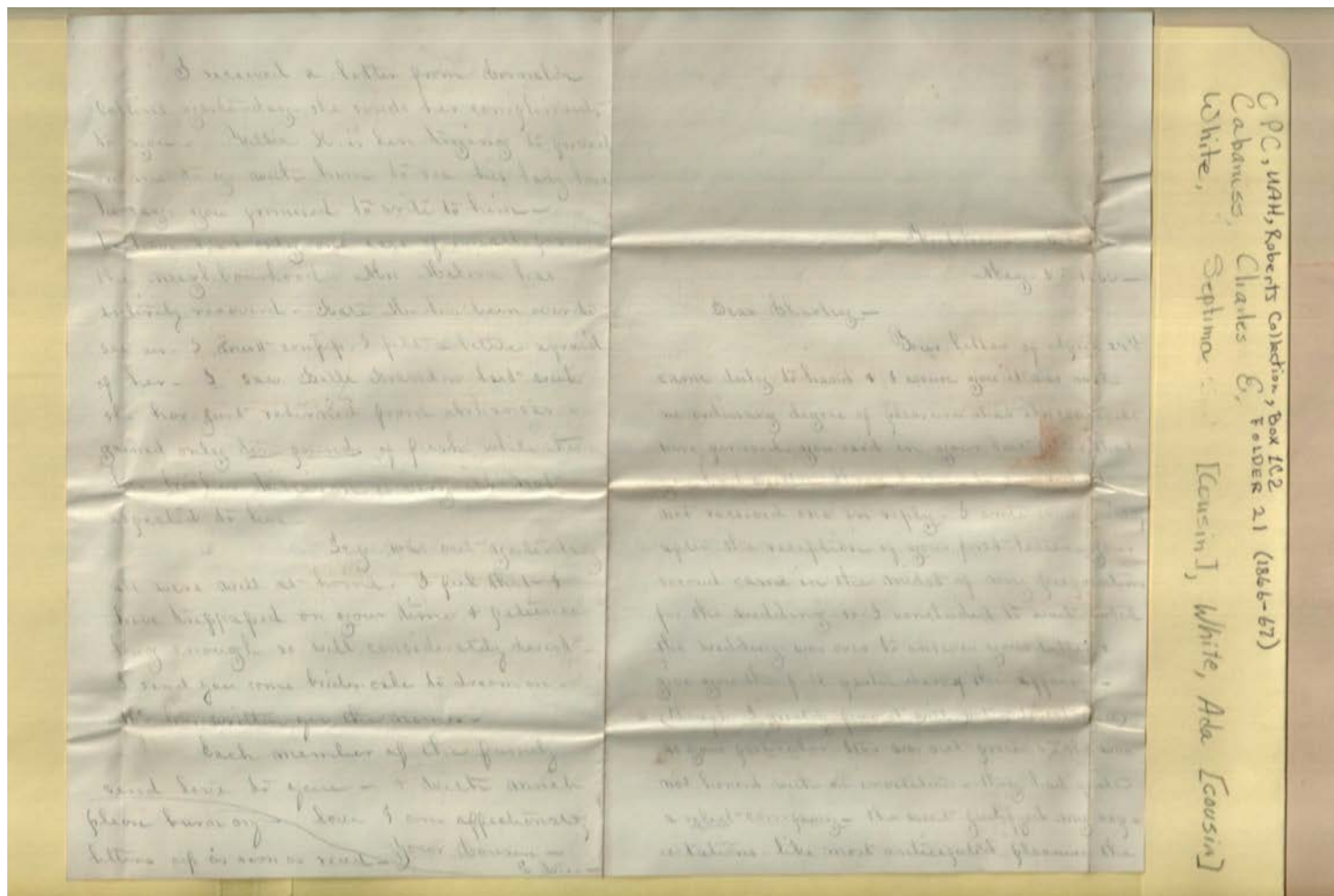
Types:

correspondence

Frances Cabaniss Roberts Collection: Series 1, Subseries C, Box 2, Folder 21

White, Septima and Ada to Cabaniss, Charles Eugene, 1866-1867

Image 3 r01c02-21-000-0061 [Contents](#) [Index](#) [About](#)



Names:

, Charley
Collins, Cornelia

Malone,
Rice, Millie

Swandon, Sallie
White, S.

Types:

correspondence

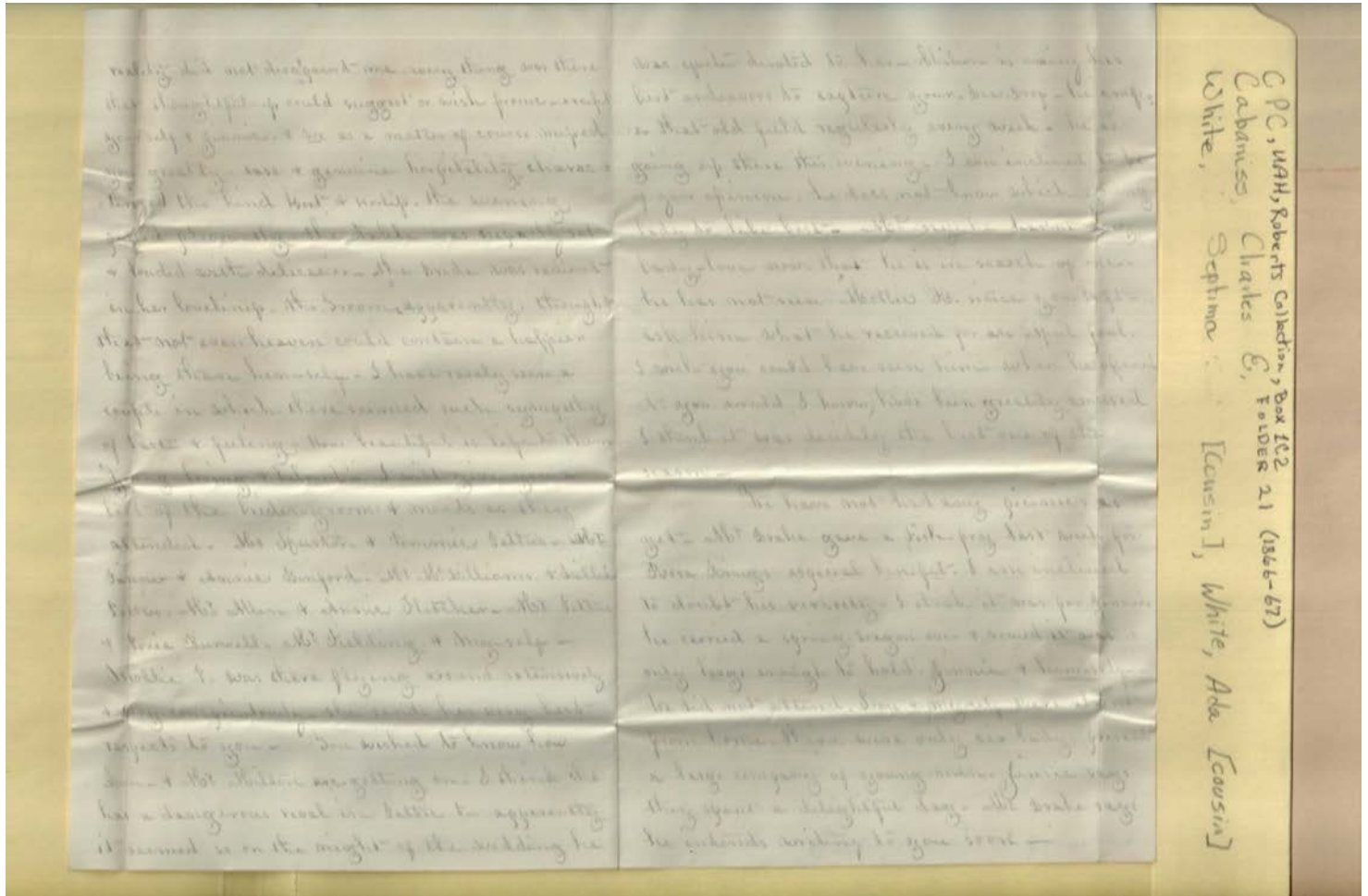
Dates:

May 05, 1866

Frances Cabaniss Roberts Collection: Series 1, Subseries C, Box 2, Folder 21

White, Septima and Ada to Cabaniss, Charles Eugene, 1866-1867

Image 4 r01c02-21-000-0062 [Contents](#) [Index](#) [About](#)



Names:

, Chilion
 , Fannie
 , Jimmie
 , Mollie
 Binford, Annie

Drake,
 Farris, Willie
 Fielding,
 Fletcher, Allen
 Fletcher, Annie

Gattis, Tommie
 Groom,
 McWilliams,
 Millen,
 Shepherd,

Tenning, Reese
 Turnstall, Neine
 White, Mollie

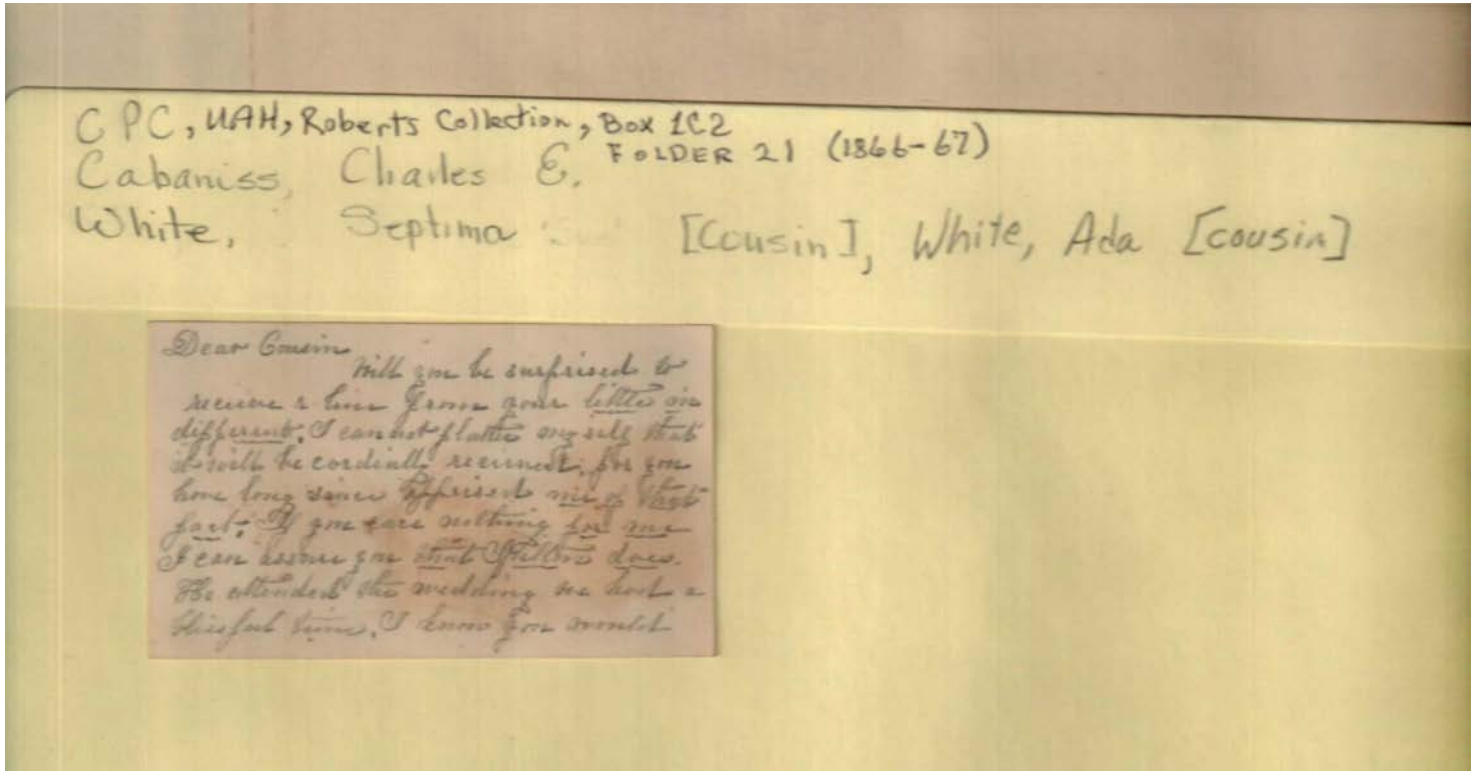
Types:

correspondence

Frances Cabaniss Roberts Collection: Series 1, Subseries C, Box 2, Folder 21

White, Septima and Ada to Cabaniss, Charles Eugene, 1866-1867

Image 5 r01c02-21-000-0063 [Contents](#) [Index](#) [About](#)



Names:

, Chilion

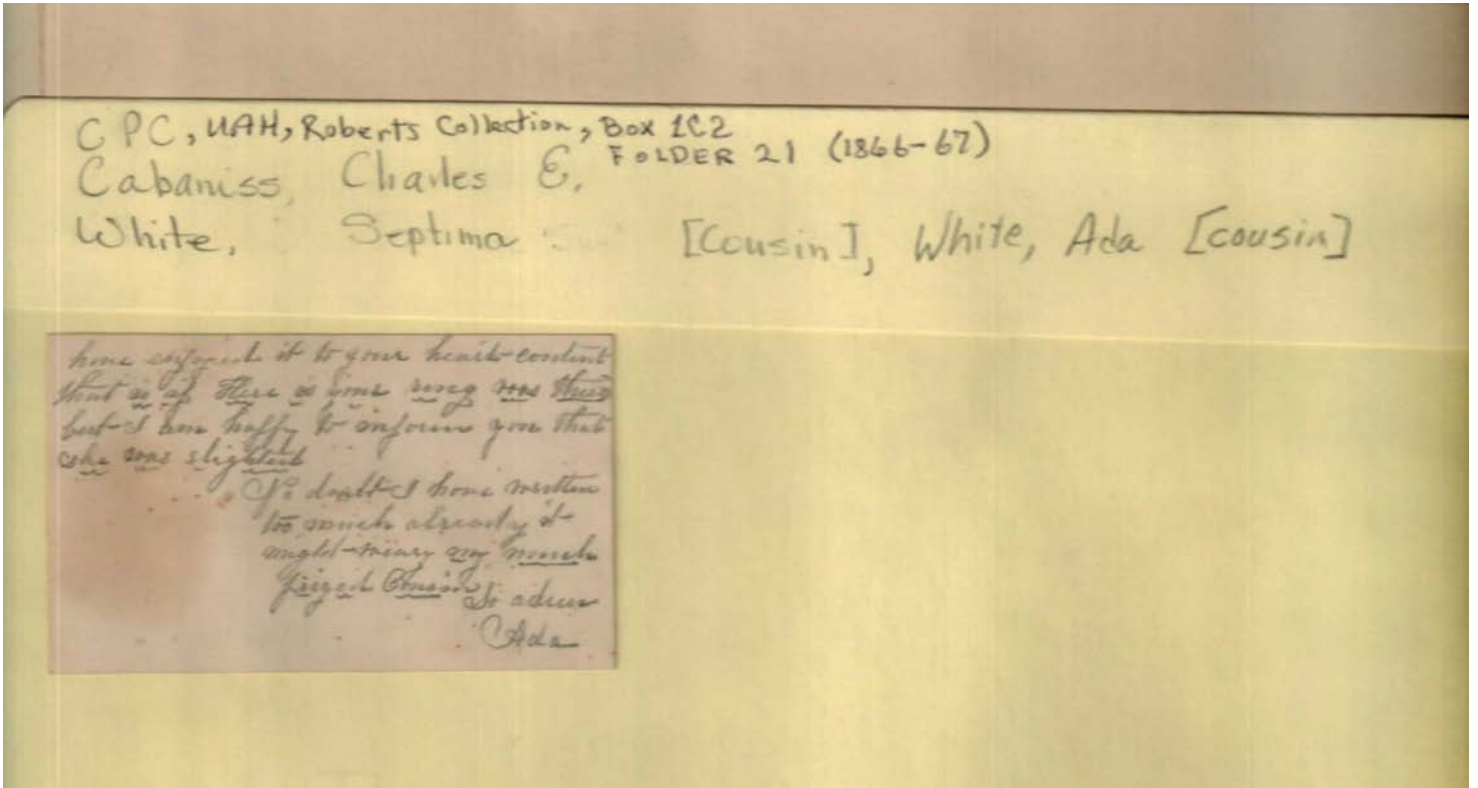
Types:

correspondence

Frances Cabaniss Roberts Collection: Series 1, Subseries C, Box 2, Folder 21

White, Septima and Ada to Cabaniss, Charles Eugene, 1866-1867

Image 6 r01c02-21-000-0064 [Contents](#) [Index](#) [About](#)



Names:

, Ada

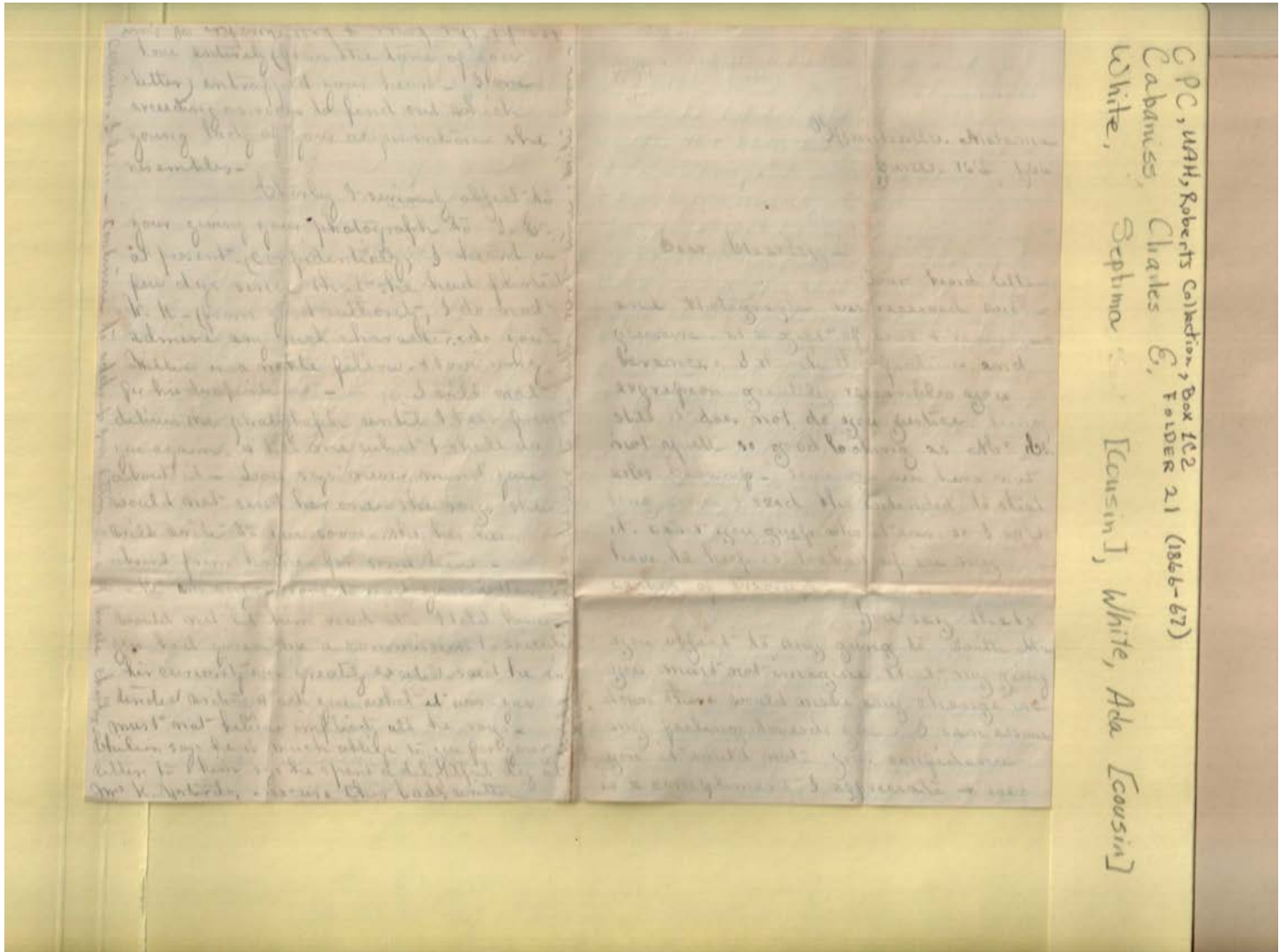
Types:

correspondence

Frances Cabaniss Roberts Collection: Series 1, Subseries C, Box 2, Folder 21

White, Septima and Ada to Cabaniss, Charles Eugene, 1866-1867

Image 7 r01c02-21-000-0065 [Contents](#) [Index](#) [About](#)



Names:

, Charley

, K., Mrs.

, Millie

Cabaniss,

Places:

Huntsville, AL

Types:

correspondence

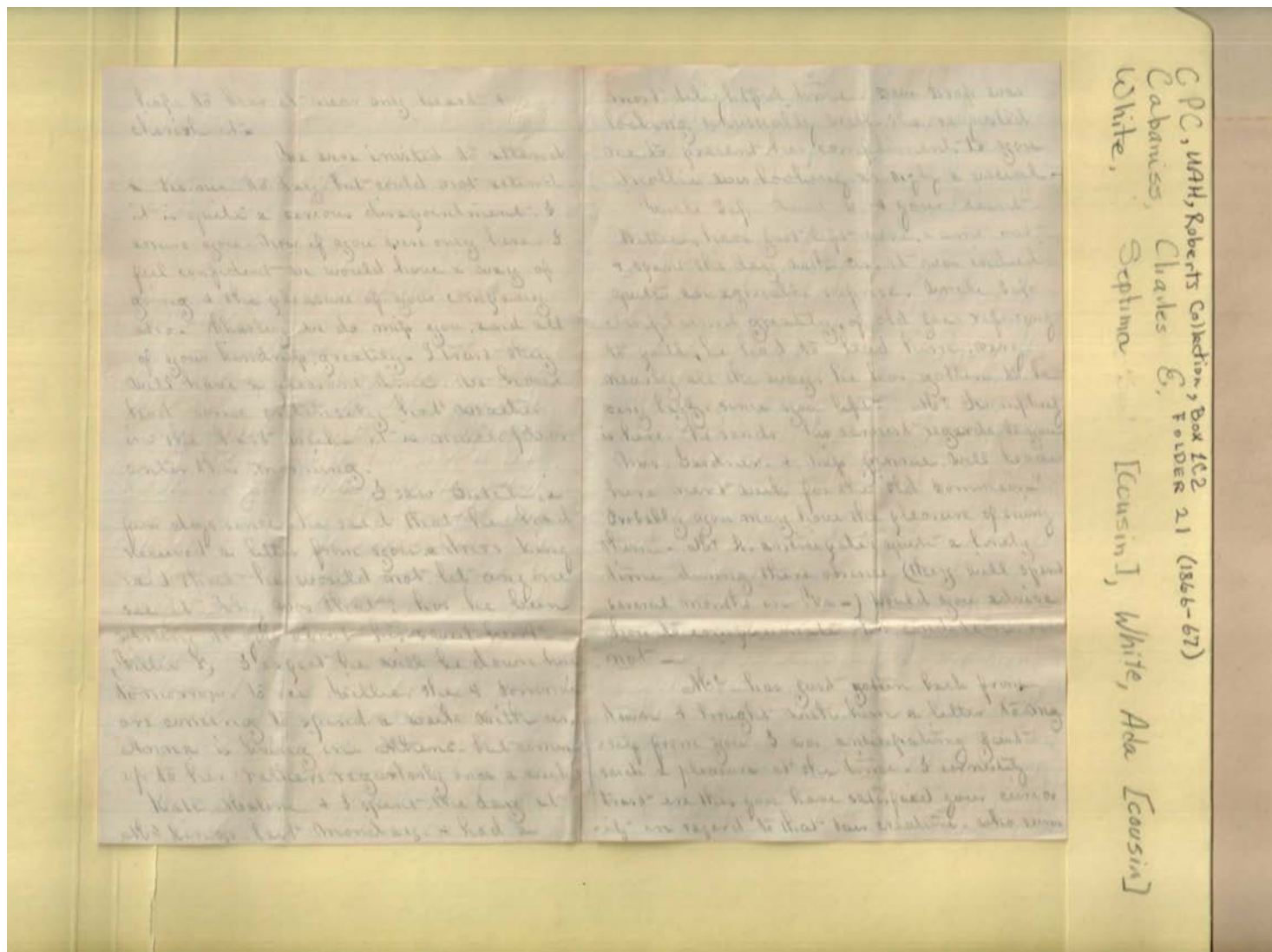
Dates:

Jun 16, 1866

Frances Cabaniss Roberts Collection: Series 1, Subseries C, Box 2, Folder 21

White, Septima and Ada to Cabaniss, Charles Eugene, 1866-1867

Image 8 r01c02-21-000-0066 [Contents](#) [Index](#) [About](#)



Names:

- | | | | |
|----------|----------|-----------|--------------|
| , Anna | , Millie | , Willie | Malone, Kate |
| , Bettie | , Mollie | Gardner, | |
| , Dutch | , Sep | Humphrey, | |
| , Fannie | , Tommie | King, | |

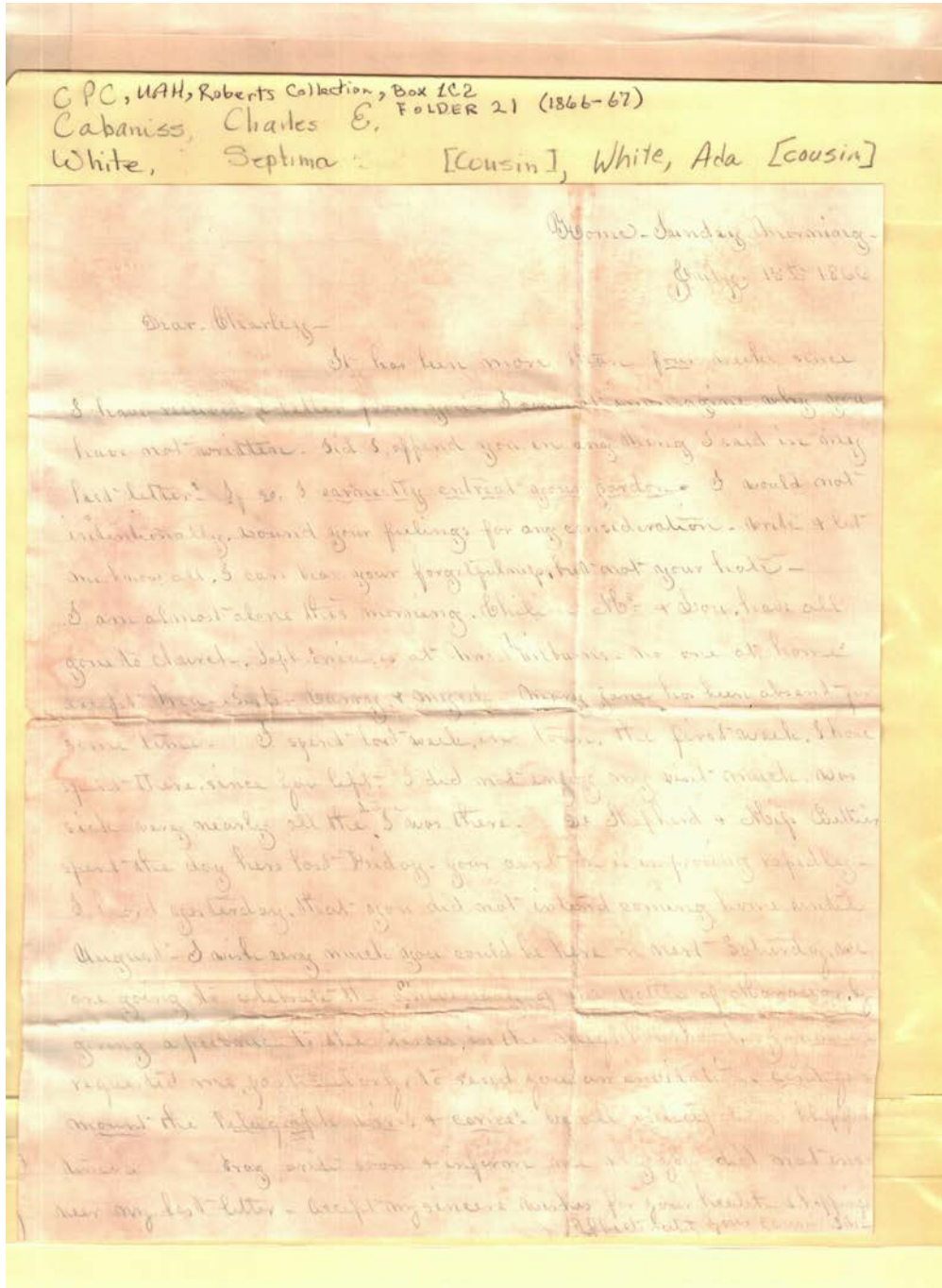
Types:

correspondence

Frances Cabaniss Roberts Collection: Series 1, Subseries C, Box 2, Folder 21

White, Septima and Ada to Cabaniss, Charles Eugene, 1866-1867

Image 9 r01c02-21-000-0067 [Contents](#) [Index](#) [About](#)



Names:

, Bettie
, Carry
, Charley

, Chilion
, Lon
, Malone

, Mary Jane
, Robbie
, Sophronia

Shepherd, Dr.

Types:

correspondence

Dates:

Jun 15, 1866

Frances Cabaniss Roberts Collection: Series 1, Subseries C, Box 2, Folder 21

White, Septima and Ada to Cabaniss, Charles Eugene, 1866-1867

Image 10 r01c02-21-000-0068 [Contents](#) [Index](#) [About](#)

CPC, UAH, Roberts Collection, Box 102
Cabaniss, Charles E. FOLDER 21 (1866-67)
White, Septima [Cousin], White, Ada [Cousin]

Dear Charles
I have had letter of Oct 25th.
You returned school days soon, and since you propose to
be of a program of position, I hope I shall not be too
severely censured for my feelings in writing to you
I had no idea of such long delay, and I just received
your letter but I find the old trouble. I am sure it is
the thing of course to be sure, but I wish to protest
because sufficient to say we all have our faults & faults &
with the promise of future amendment, and I hope to see
you again for ever.

And you are determined to become
a hard student & not fall in love, for the next year
you, to come. What change, is this that has come over you
I can not command you, for desiring to try so firm
how in a thorough education, before building up your
single of fame, and I must longer wait you for
success in yours, whenever you please.

Conference of the Methodist Church met on
on last Wednesday I have not attended the meeting as yet
I would have been delighted to have gone on the night &

Places:

Woodborn

Types:

correspondence

Dates:

Oct 25, 1866

Frances Cabaniss Roberts Collection: Series 1, Subseries C, Box 2, Folder 21

White, Septima and Ada to Cabaniss, Charles Eugene, 1866-1867

Image 11 r01c02-21-000-0069 [Contents](#) [Index](#) [About](#)

CPC, UAH, Roberts Collection, Box 2, Folder 21 (1866-67)
Cabaniss, Charles E.
White, Septima [Cousin], White, Ada [Cousin]

beautiful morning but our having no conveyance was
denied that pleasure -
I trust that you attended your friends reception &
had a happy time. I attended a bridal party, do not
think given to Mr. Will McClelland & his wife at the
house of Mr. J. Kelley. We all had a most delightful
time. There were quite a number of gentlemen & ladies
in attendance. The bride looked charmingly. They are
quite a fine looking couple. Mr. & Mrs. W. were present look-
ing so fascinating a couple. They had a splendid supper.
but poor Mr. Kelley's which gave me a very
I want to see my mutual friend. He is immersed
on last Sunday. He has united with the Methodist Church
Fannie & her. To move to speak the words in
- miss. Sallie & Kate both wished to be remembered
to you. I see that for some time ago we have
not heard from them since they left. You must write
to her. Mr. & Mrs. Kelley, however, were here yesterday
all were well at your home. He has had quite a pleasant
time. His wife, however, declared I wish you could have
been with us. I will close with the others & the letters are
coming. You must write again soon. All the family
and white are in such a low to get. Affect your
love eyes she will write to you soon. Love from
I will send my photograph when I write again.

Names:

, Fannie
, Jennie N.
, Kate

, Sallie
, Sue
, Willie

Allen,
Kelley, William J.
McClelland, Will

Sheppard, Dr.

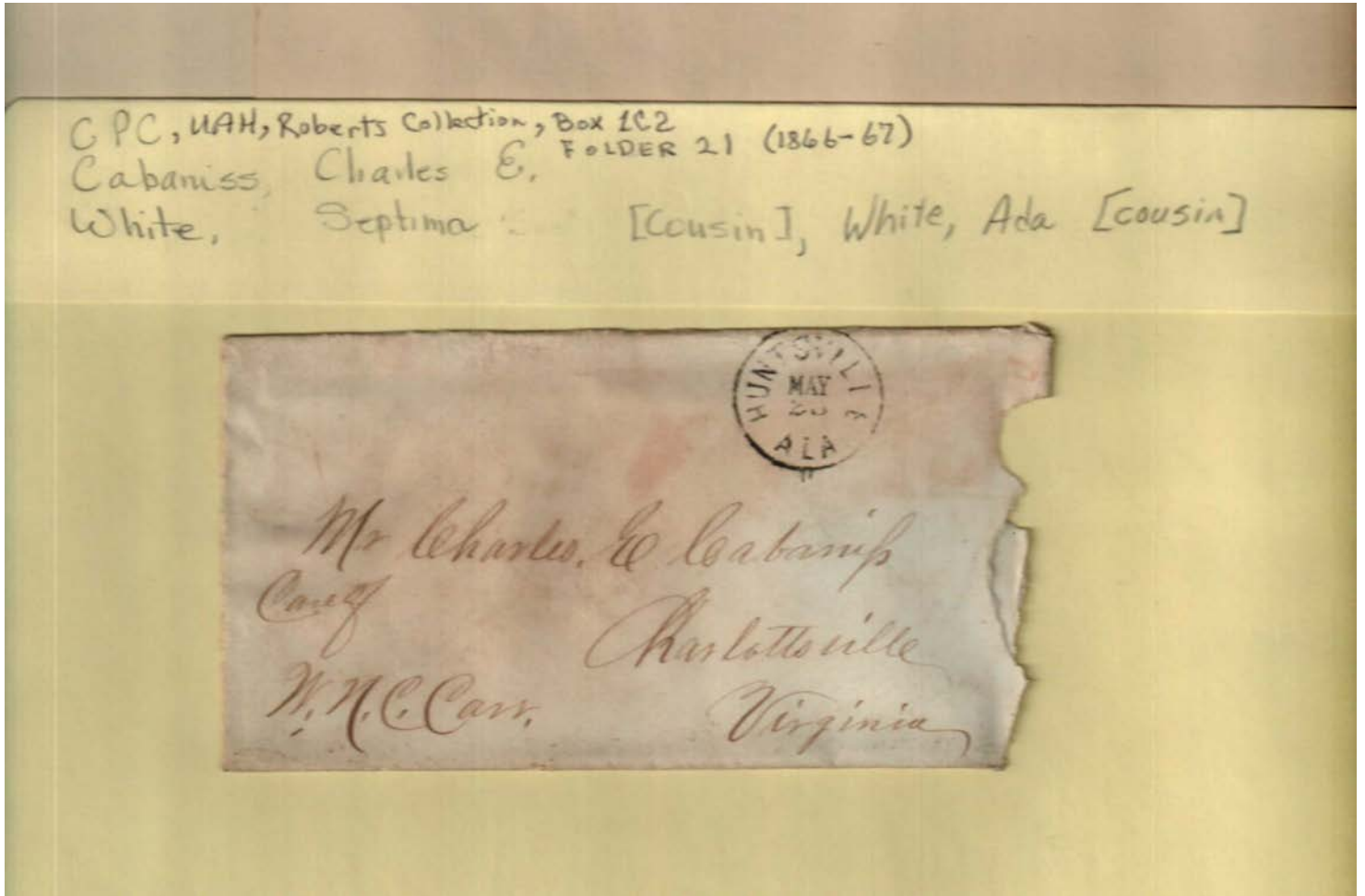
Types:

correspondence

Frances Cabaniss Roberts Collection: Series 1, Subseries C, Box 2, Folder 21

White, Septima and Ada to Cabaniss, Charles Eugene, 1866-1867

Image 12 r01c02-21-000-0070 [Contents](#) [Index](#) [About](#)



Names:

Cabaniss, Charles E.

Carr, W. N. C.

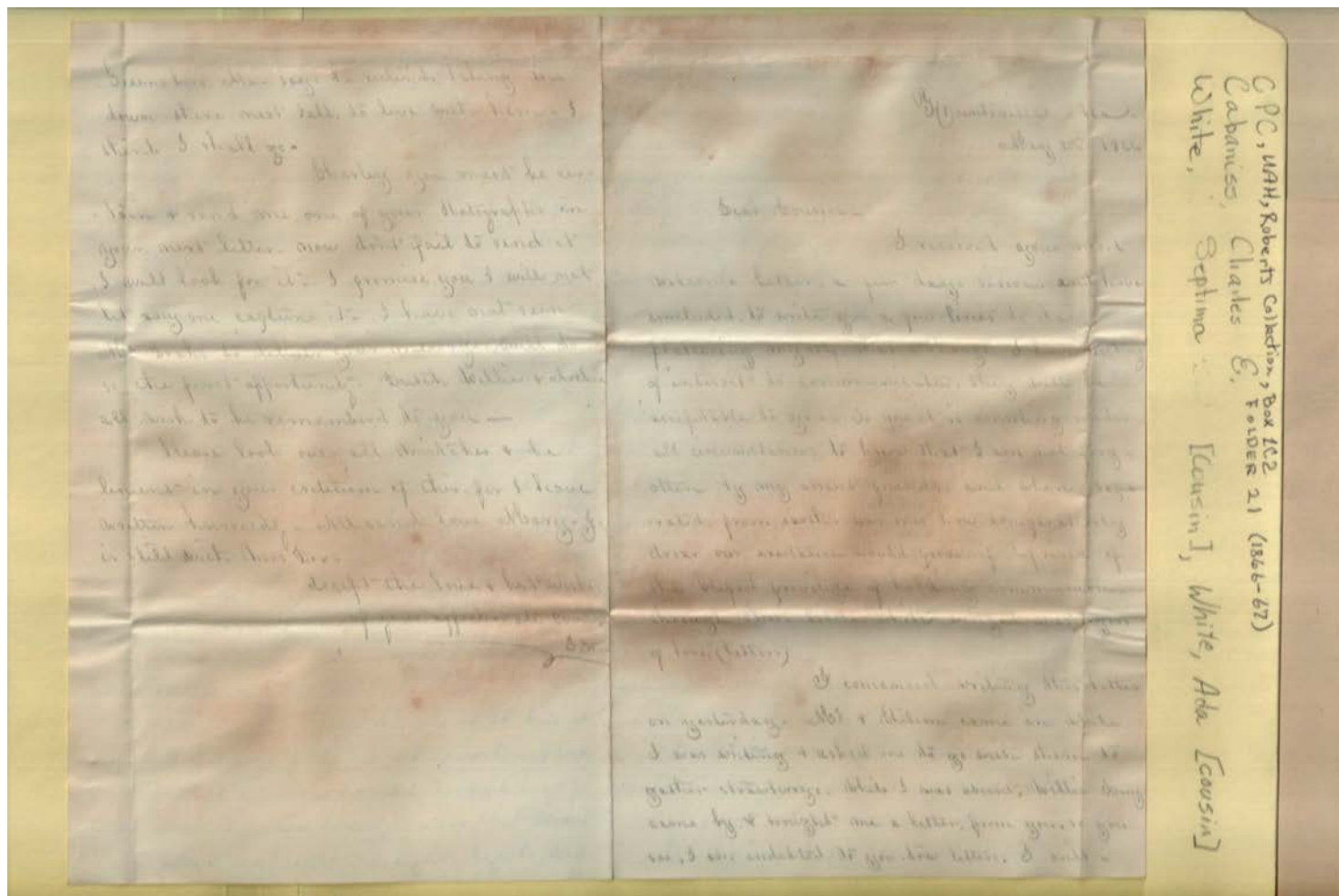
Types:

envelope

Frances Cabaniss Roberts Collection: Series 1, Subseries C, Box 2, Folder 21

White, Septima and Ada to Cabaniss, Charles Eugene, 1866-1867

Image 13 r01c02-21-000-0071 [Contents](#) [Index](#) [About](#)



Names:

, Charley , Chilion , Willie

Places:

Huntsville, AL

Types:

correspondence

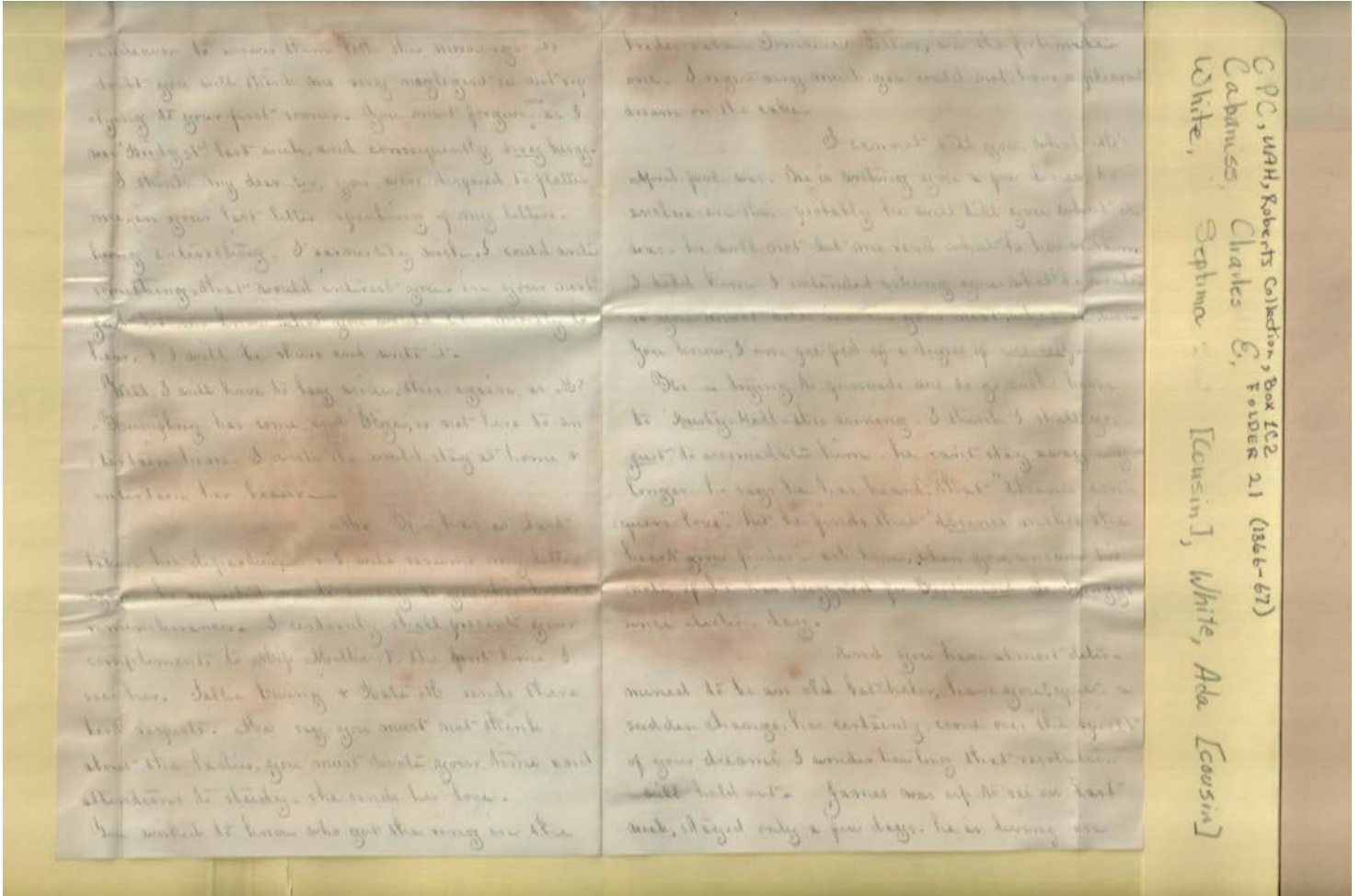
Dates:

May 25, 1866

Frances Cabaniss Roberts Collection: Series 1, Subseries C, Box 2, Folder 21

White, Septima and Ada to Cabaniss, Charles Eugene, 1866-1867

Image 14 r01c02-21-000-0072 [Contents](#) [Index](#) [About](#)



Names:

, Eliza
, James

, Kate
, Kate M.

, Mollie
, Sallie

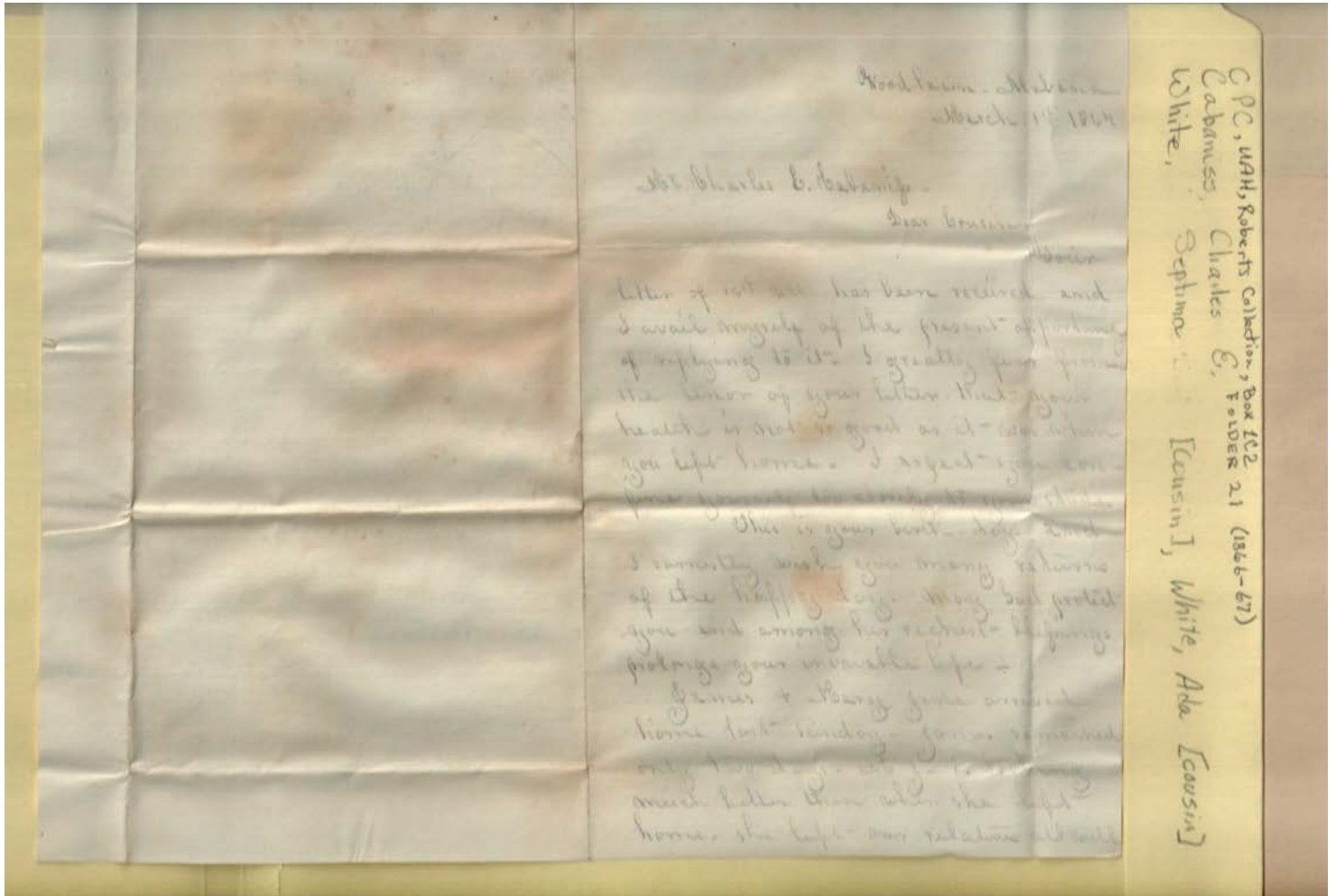
Types:

correspondence

Frances Cabaniss Roberts Collection: Series 1, Subseries C, Box 2, Folder 21

White, Septima and Ada to Cabaniss, Charles Eugene, 1866-1867

Image 15 r01c02-21-000-0073 [Contents](#) [Index](#) [About](#)



Names:

, James

, Mary

Cabaniss, Charles E.

Places:

Woodlawn, AL

Types:

correspondence

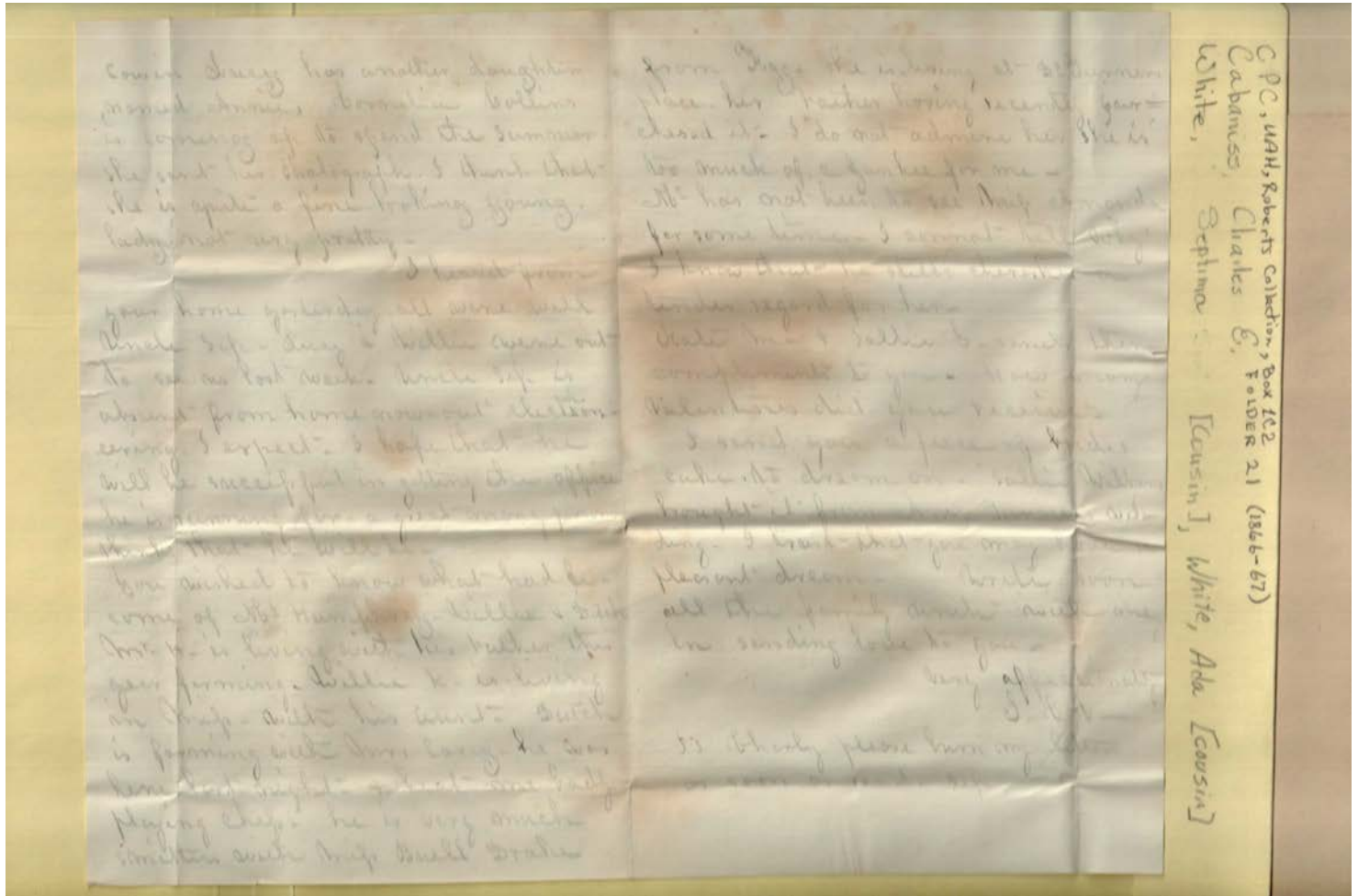
Dates:

Mar 01, 1867

Frances Cabaniss Roberts Collection: Series 1, Subseries C, Box 2, Folder 21

White, Septima and Ada to Cabaniss, Charles Eugene, 1866-1867

Image 16 r01c02-21-000-0074 [Contents](#) [Index](#) [About](#)



Names:

, Annie
 , Dutch
 , Lucy
 , Sallie S.

, Searcy
 , Sep
 , Willie
 Carey, Amos

Collins, Cornelia
 Drake, Buell
 Humphrey,
 Malone, Kate

Wilborn, Sallie

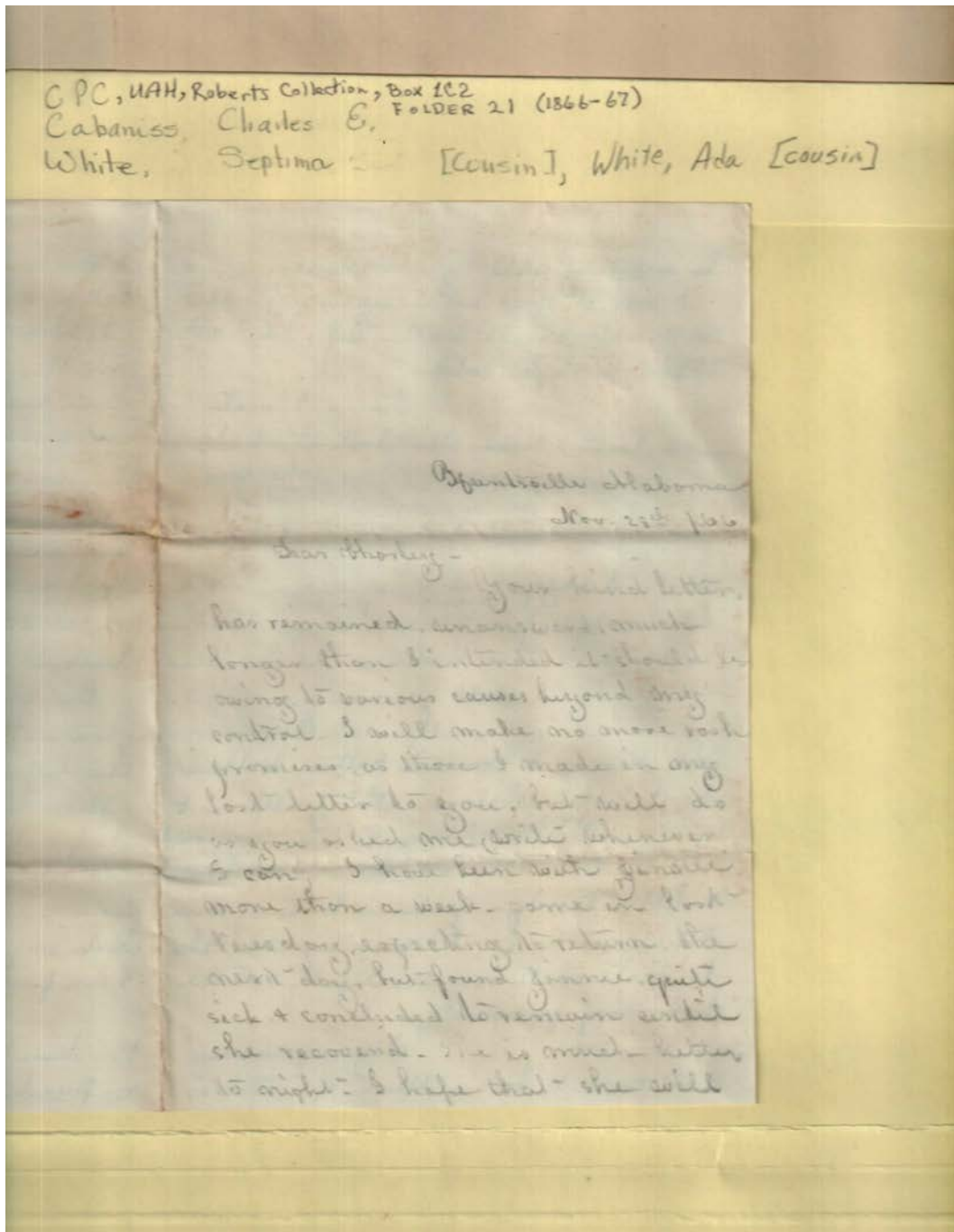
Types:

correspondence

Frances Cabaniss Roberts Collection: Series 1, Subseries C, Box 2, Folder 21

White, Septima and Ada to Cabaniss, Charles Eugene, 1866-1867

Image 17 r01c02-21-000-0075 [Contents](#) [Index](#) [About](#)



Names:

, Charley

, Jennie

Places:

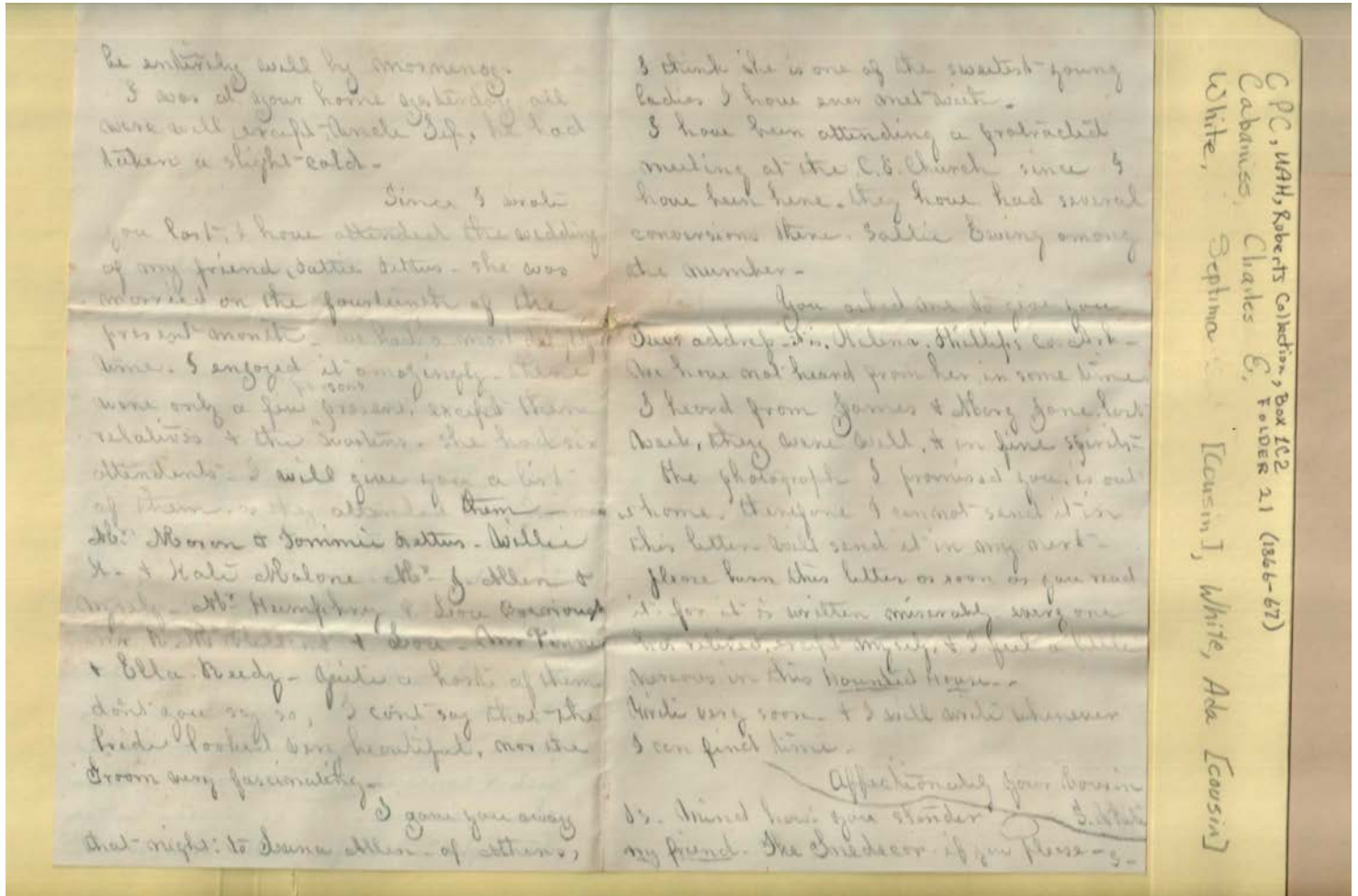
Huntsville, AL

Types:

correspondence

Dates:

Nov 28, 1866



Names:

- | | | | |
|-------------|---------------|------------------|-----------------|
| , James | Allen, Lana | McClelland, Will | Turner, Lou-Ann |
| , Mary Jane | Brinough, Lou | Pettus, Hattie | White, S. |
| , Sep | Ewing, Sallie | Pettus, Tommie | |
| , Willie | Humphrey, | Phillips, Helena | |
| Allen, J. | Malone, Kate | Reedy, Ella | |

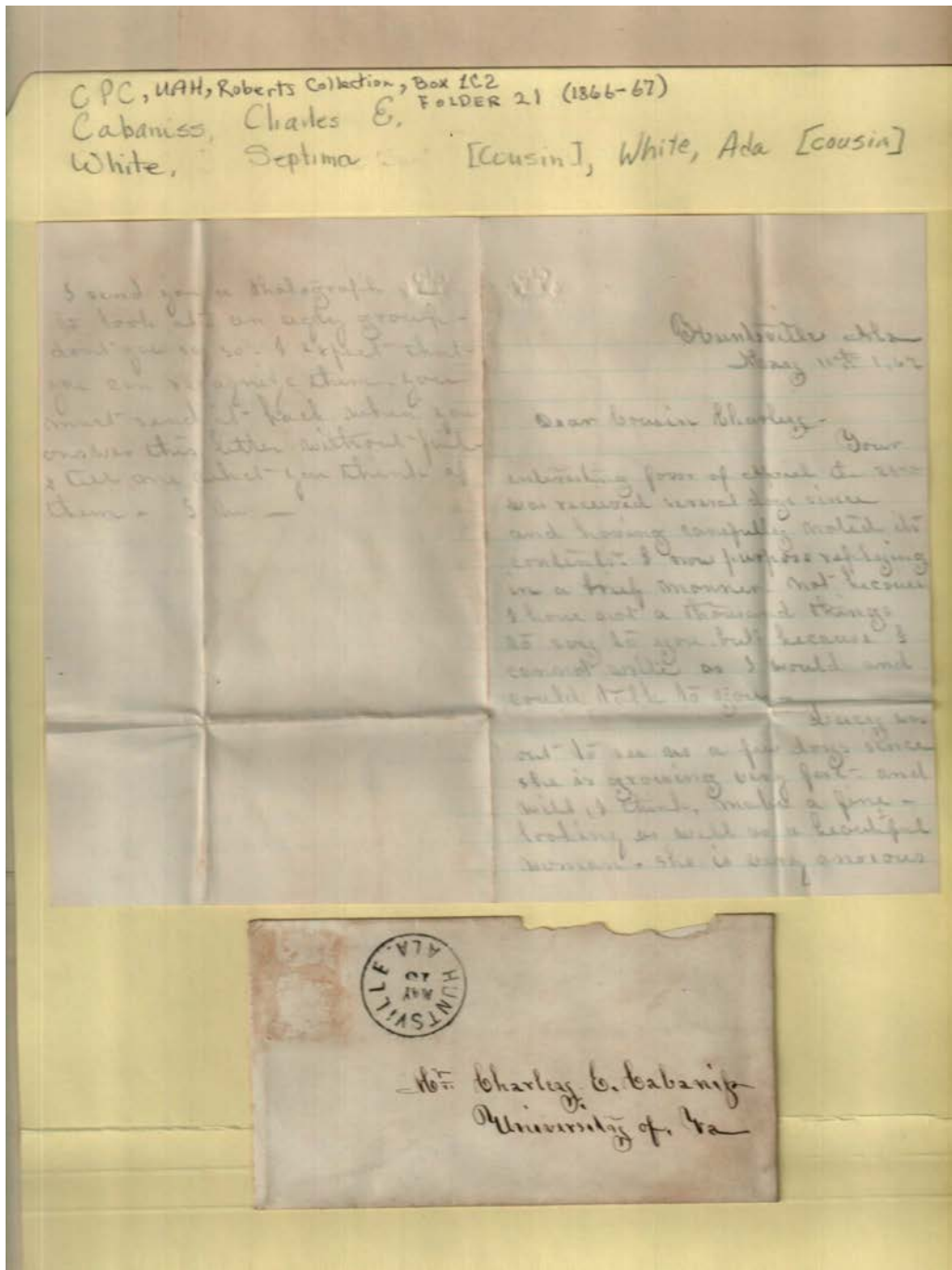
Types:

correspondence

Frances Cabaniss Roberts Collection: Series 1, Subseries C, Box 2, Folder 21

White, Septima and Ada to Cabaniss, Charles Eugene, 1866-1867

Image 19 r01c02-21-000-0077 [Contents](#) [Index](#) [About](#)



Names:

, Charley

, Lucy

Places:

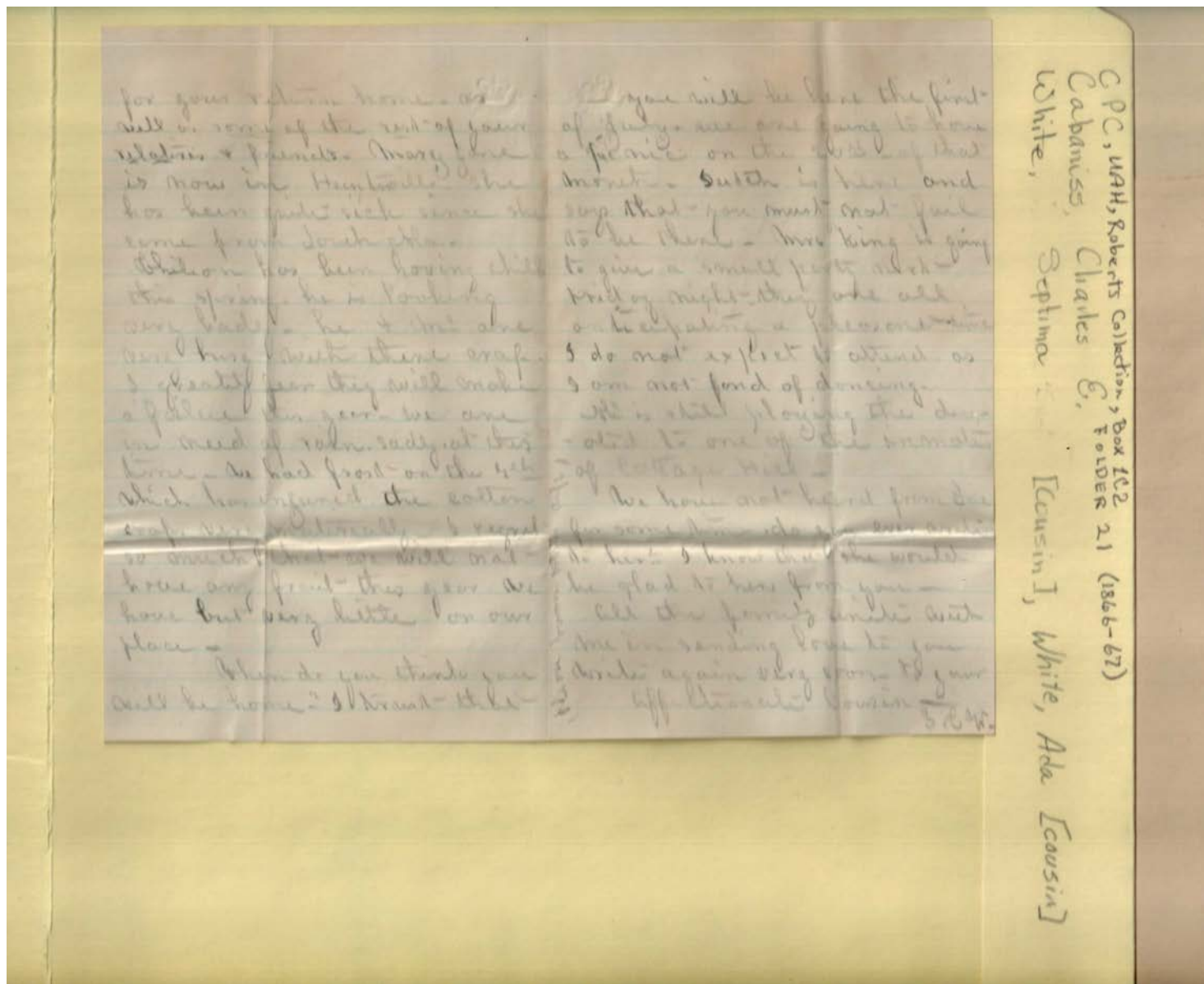
Huntsville, AL

Types:

correspondence

Dates:

Jan 11, 1862



Names:

, Chilion

, Dutch

, Mary Jane

King,

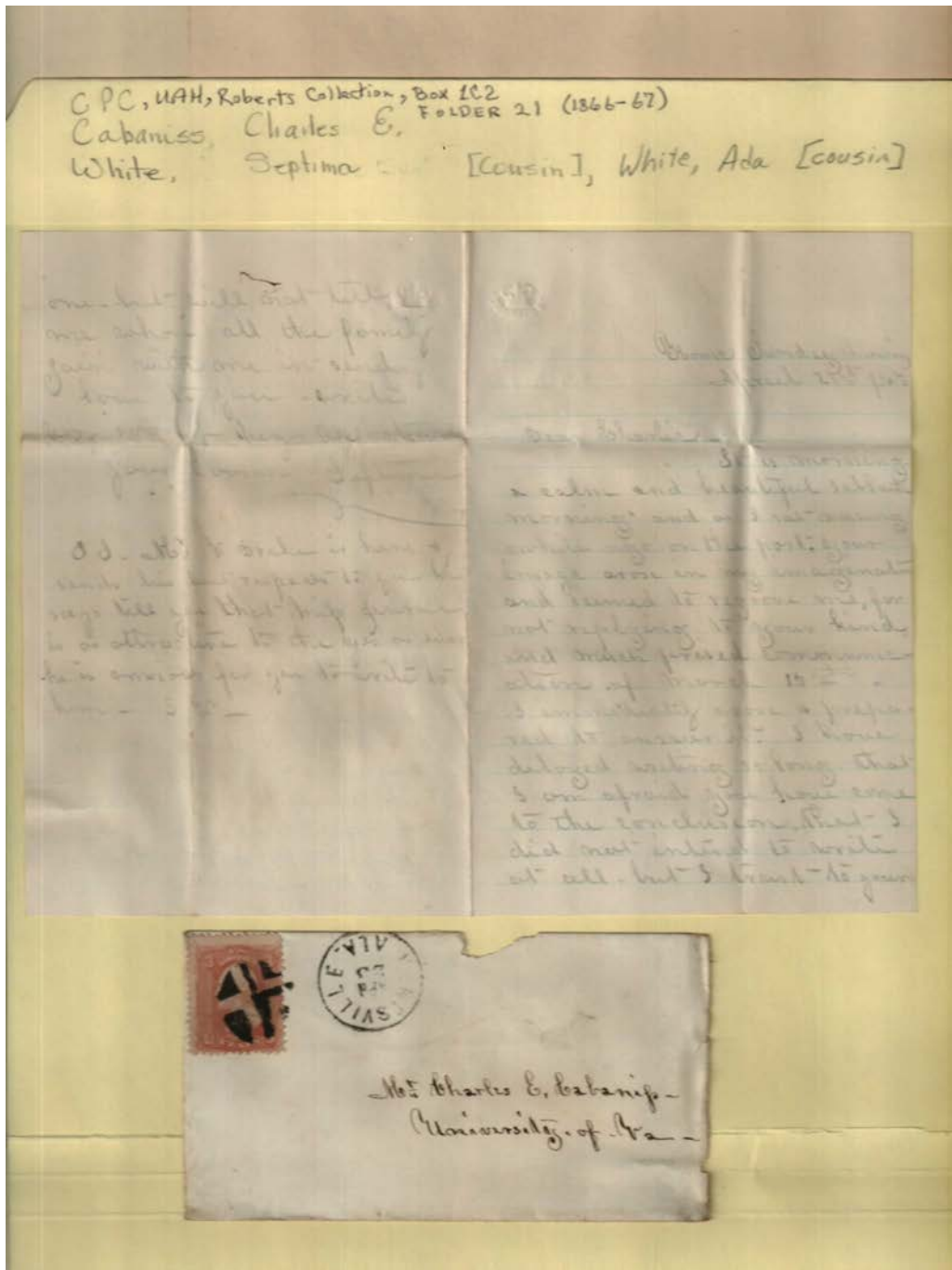
Types:

correspondence

Frances Cabaniss Roberts Collection: Series 1, Subseries C, Box 2, Folder 21

White, Septima and Ada to Cabaniss, Charles Eugene, 1866-1867

Image 21 r01c02-21-000-0079 [Contents](#) [Index](#) [About](#)



Names:

, Charley

, Septima

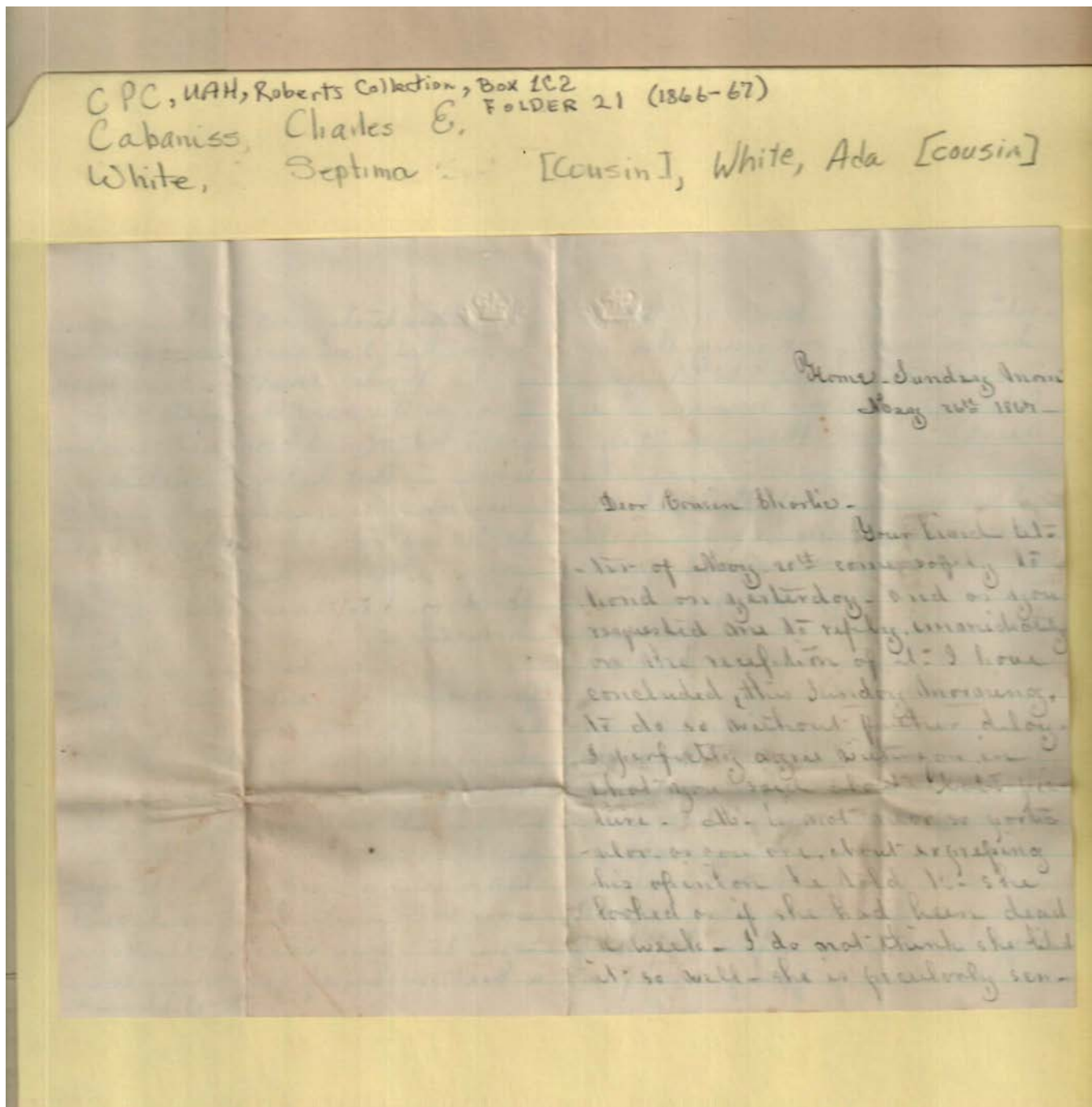
Cabaniss, Charles E.

Types:

correspondence

Dates:

Apr 21, 1867



Names:

, Charlie

Types:

correspondence

Dates:

May 26, 1867

CPC, UAH, Roberts Collection, Box 102
Cabaniss, Charles E. FOLDER 21 (1866-67)
White, Septima [Cousin], White, Ada [Cousin]

...time & cannot her remember
... & myself are going this
evening to call on the Misses
Coldwell who are now in the
neighbourhood. They are very
pretty & accomplished young ladies
I wish very much that you were
here to go with us. Chilion & all
one both absent on usual Sunday
morning, Chilion has gone to see
Sammie's - & all to see Mollie's
I do not think that he is cured
effectually, yet.

Chilion & all
& myself attended a supper party
at the house, not long since.
we had a very pleasant time in
which they danced until after
two o'clock. I did not partice
part in the dance - but enjoyed
myself amazingly, felt despondent
in love with a young man from

... kindly - Mrs Drake, as you
know, that I am very susceptible
of the tender emotion. He called
to see us the next day after the
party - but alas! I have not seen him
since - Mr Wiley regretted
your absence greatly, or perhaps
not, I don't know which. I
doubted, Mollie did not doubt
think of her much stability of
character -

... has been in town
for several days, will return this
evening. we miss her sadly when
she is absent. We have not
heard from her for some
time - all were well at your home on
yesterday except your uncle's - he
had a cold on Friday - which again
was soon - all the family send
love to you - & accept the love
& best wishes of your sincere cousin
Septima W.

Names:

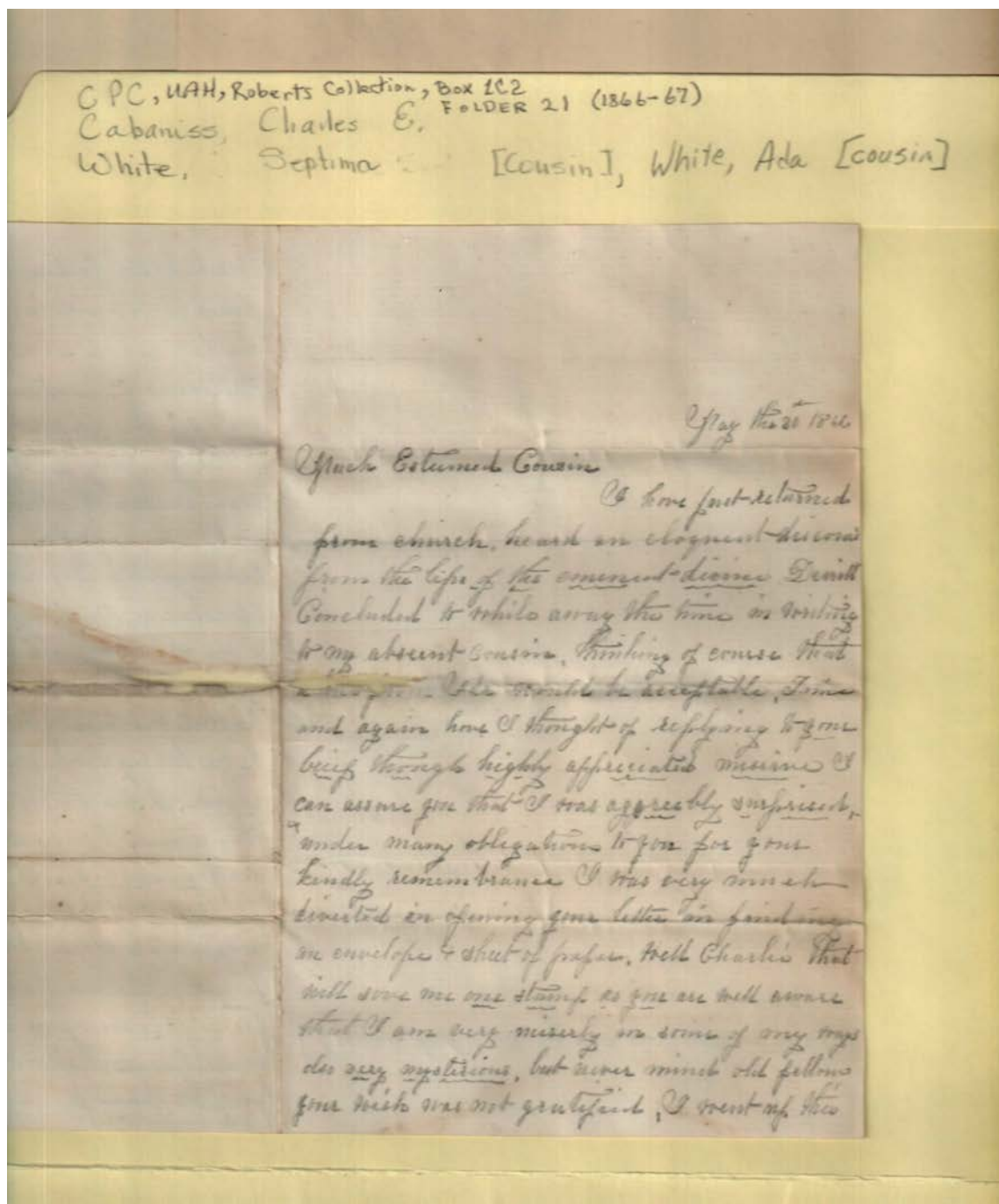
, Chilion
, Jennie
, Lou

, Mollie
, Sammie
Coldwell,

Drake,
McWiley,
White, Septima

Types:

correspondence



Names:

, Charlie

Cole,

Types:

correspondence

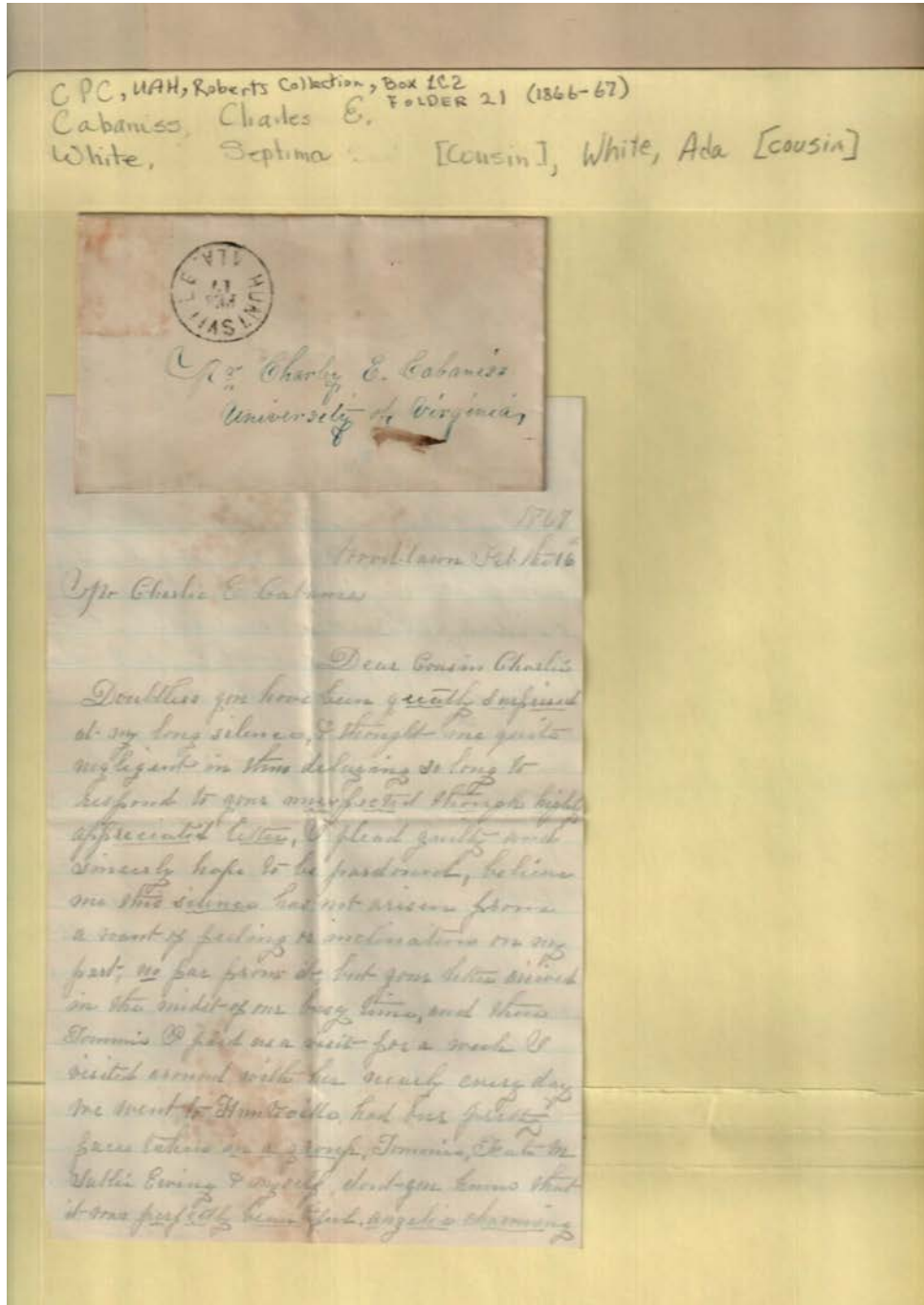
Dates:

May 20, 1866

Frances Cabaniss Roberts Collection: Series 1, Subseries C, Box 2, Folder 21

White, Septima and Ada to Cabaniss, Charles Eugene, 1866-1867

Image 26 r01c02-21-000-0084 [Contents](#) [Index](#) [About](#)



Names:

, Kate

, Tommie

Cabaniss, Charles E.

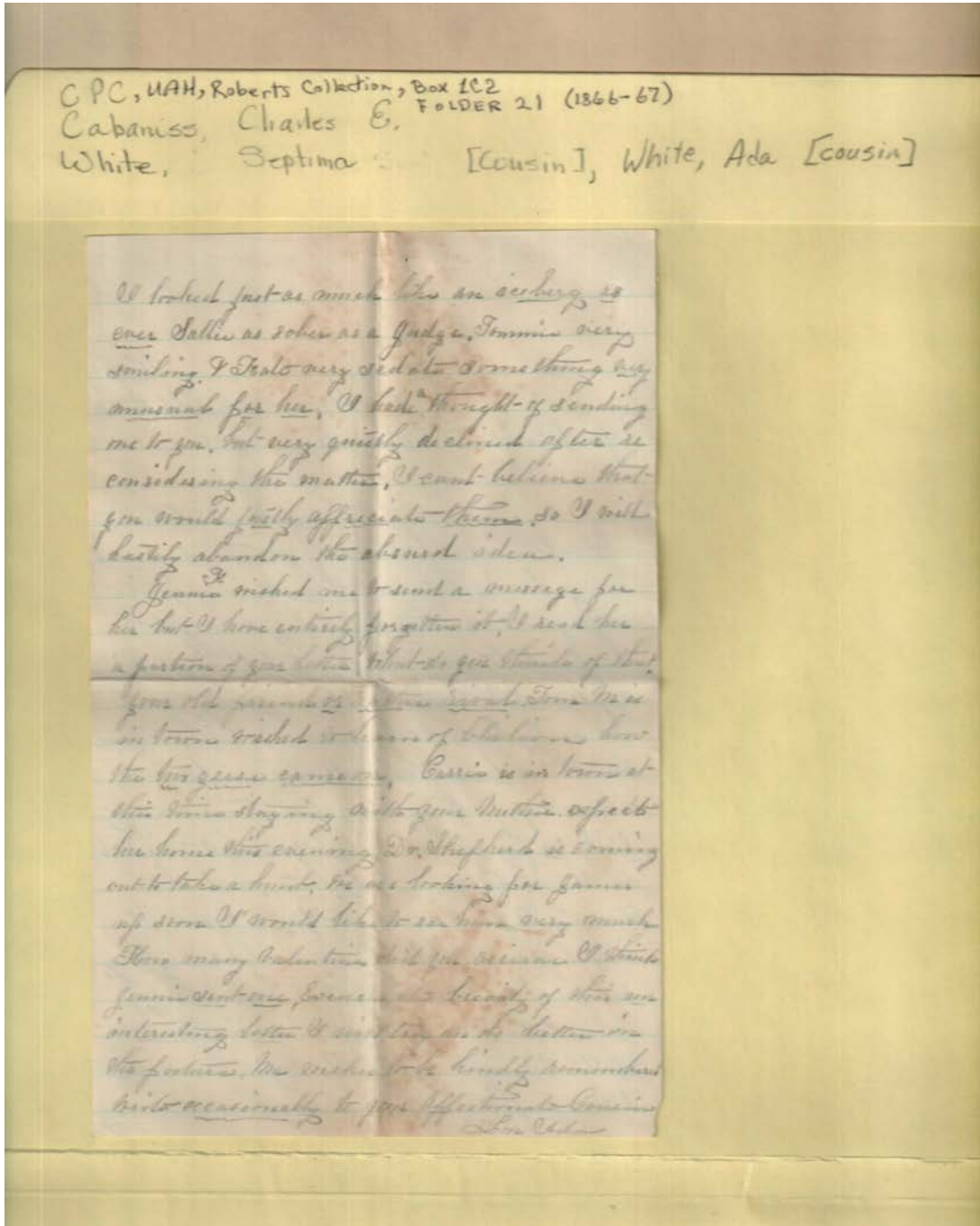
Ewing, Sallie

Types:

correspondence

Dates:

Feb 16, 1867



Names:

, Ada
, Carrie
, Chilion

, James
, Jennie
, Kate

, Lou
, Sallie
, Sarah

, Tommie
Shepherd, Dr.

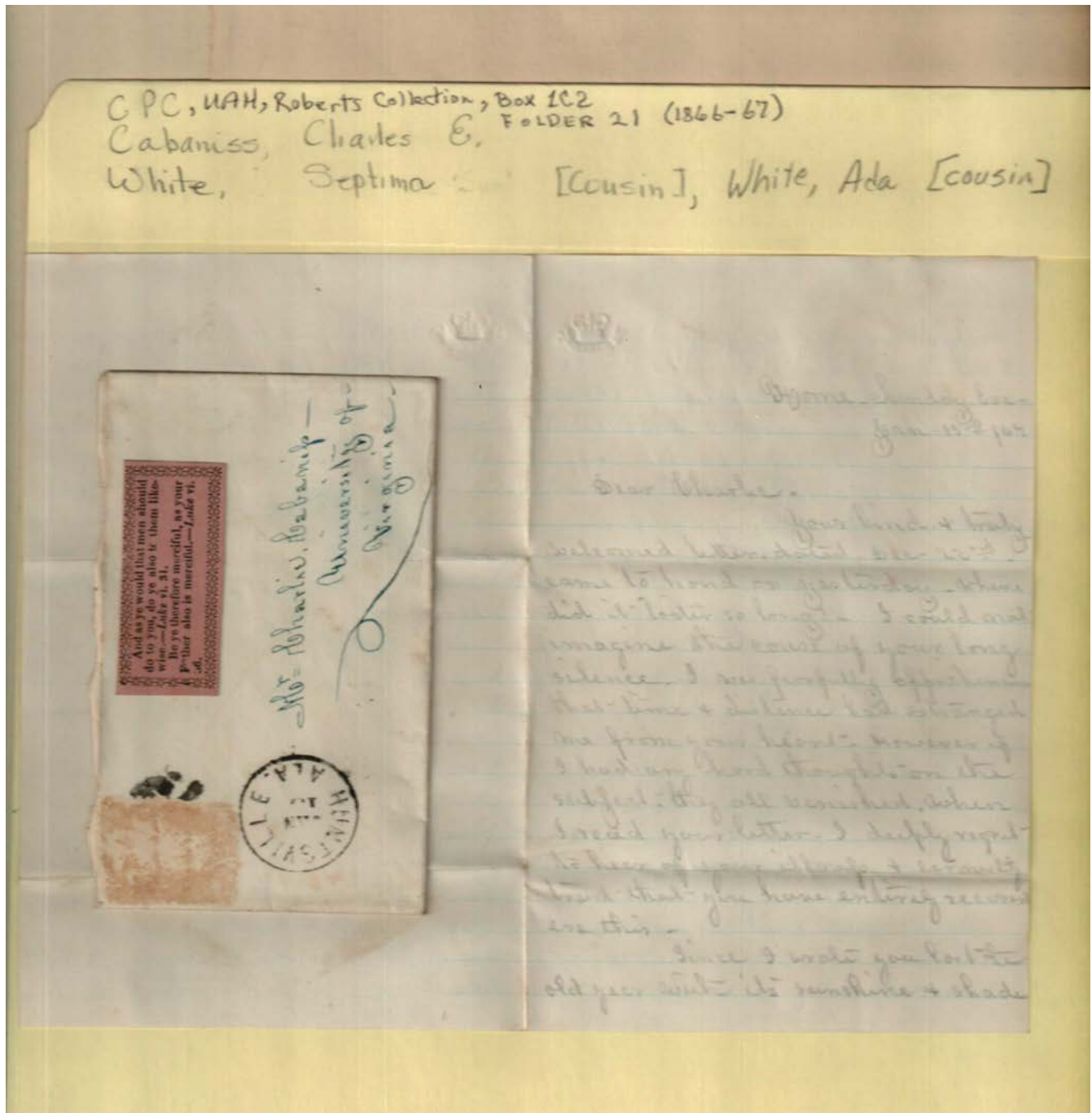
Types:

correspondence

Frances Cabaniss Roberts Collection: Series 1, Subseries C, Box 2, Folder 21

White, Septima and Ada to Cabaniss, Charles Eugene, 1866-1867

Image 28 r01c02-21-000-0086 [Contents](#) [Index](#) [About](#)



Names:

, Charlie

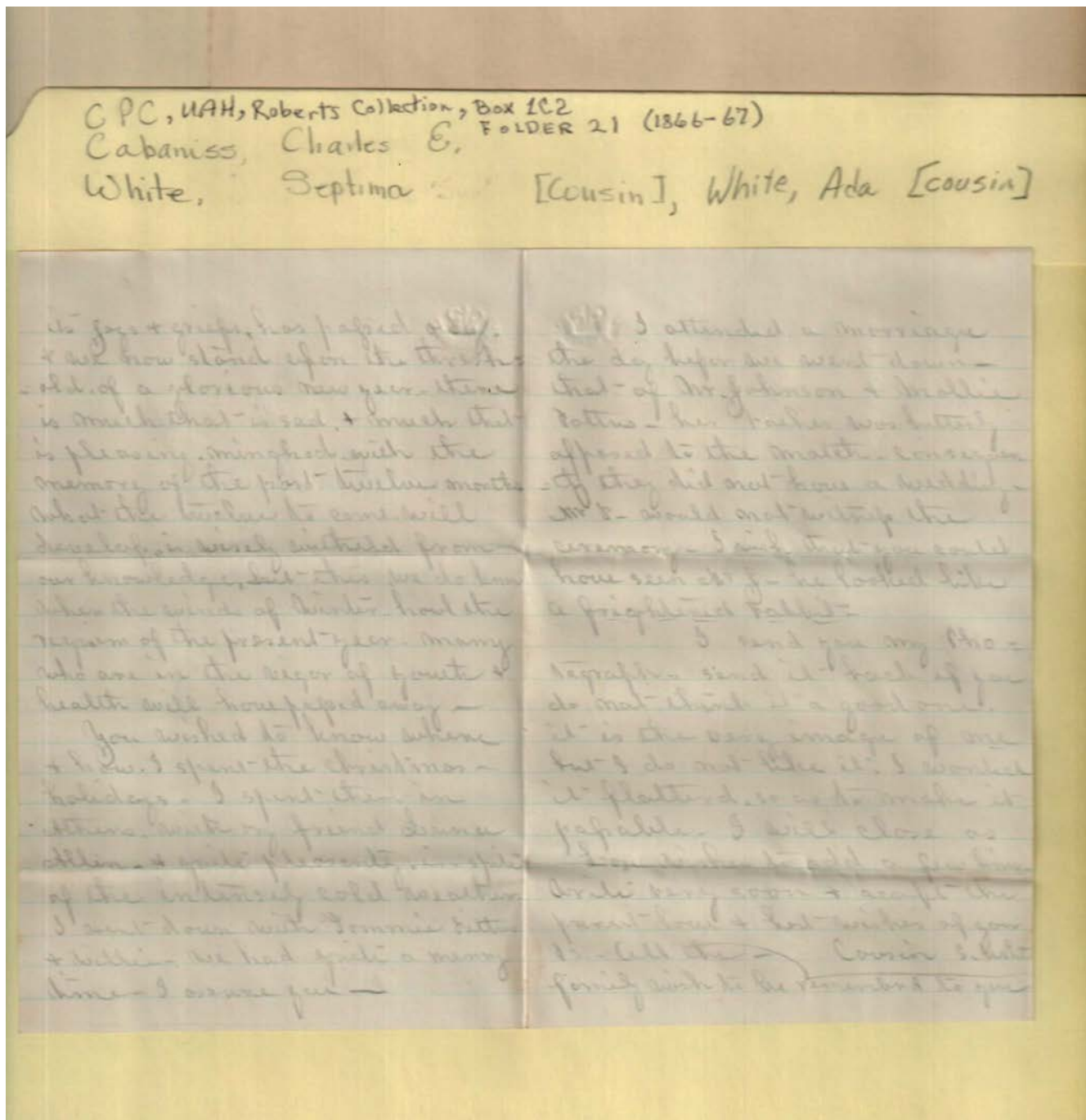
Cabaniss, Charles E.

Types:

correspondence

Dates:

Jan 13, 1867



Names:

, Millie
, Tommie

Allen, Lana
Johnson,

Pettus, Mollie
White, Septima

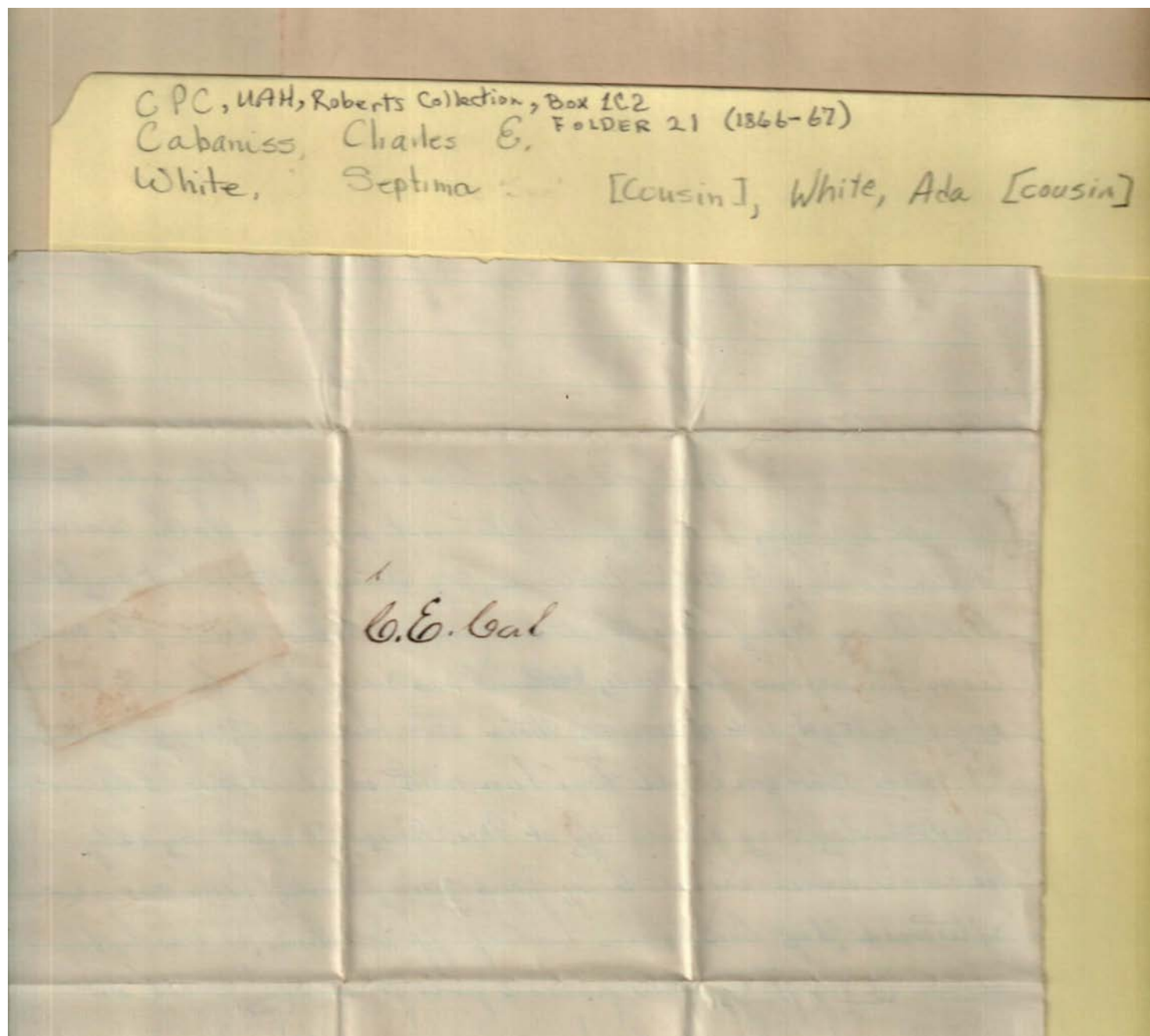
Types:

correspondence

Frances Cabaniss Roberts Collection: Series 1, Subseries C, Box 2, Folder 21

White, Septima and Ada to Cabaniss, Charles Eugene, 1866-1867

Image 30 r01c02-21-000-0088 [Contents](#) [Index](#) [About](#)



Names:

Cabaniss, C. E.

Types:

memo

G.P.C., UAH, Roberts Collection, Box 102
FOLDER 21 (1866-67)
Cabaniss, Charles E.
White, Septima [Cousin], White, Ada [cousin]

Dear Cousin

Well old chap how are you employed this
Wednesday evening. I have just returned from a walk with
Sallie Ewing & Sallie Malone they staid with us last night
Will King was just as usual & arrived at Little Sallie. He will
leave tomorrow for Miss, ~~that~~ I am very glad he is to leave
very glad to get rid of some of those troublesome young Bents.
I wish that you could have been with us Christmas & spent
Christmas day very pleasantly at Mrs. King's. Kate & myself
we came home escorted by four young ladies, four came
afterwards. Sep had taken herself off to St. Thomas. I was left
alone in my glory, time passed quite pleasantly, it did not
quite freeze up but almost became a generalized isicle, my
looks would almost freeze you. So behave. I know you think
I am crazy this evening but remember who has just left
and excuse your little indifferent cousin.

It light is approaching very fast I can scarcely see to
write, excuse this being late it is well as to ask you to write
to me, pardon these extraneous.

Yours most affectionately
Ada White

Jun the 13th 1867

Names:

, Ada

, Lon

Ewing, Sallie

, Kate

, Sep

King, Will

Types:

correspondence

Dates:

Jun 10, 1867

**Frances Cabaniss Roberts Collection: Series 1, Subseries C, Box 2, Folder 21
White, Septima and Ada to Cabaniss, Charles Eugene, 1866-1867**

[Contents](#) [Index](#) [About](#)

Table of Contents

[Image 1](#) (r01c02-21-000-0059)

[Image 2](#) (r01c02-21-000-0060)

[Image 3](#) (r01c02-21-000-0061)

[Image 4](#) (r01c02-21-000-0062)

[Image 5](#) (r01c02-21-000-0063)

[Image 6](#) (r01c02-21-000-0064)

[Image 7](#) (r01c02-21-000-0065)

[Image 8](#) (r01c02-21-000-0066)

[Image 9](#) (r01c02-21-000-0067)

[Image 10](#) (r01c02-21-000-0068)

[Image 11](#) (r01c02-21-000-0069)

[Image 12](#) (r01c02-21-000-0070)

[Image 13](#) (r01c02-21-000-0071)

[Image 14](#) (r01c02-21-000-0072)

[Image 15](#) (r01c02-21-000-0073)

[Image 16](#) (r01c02-21-000-0074)

[Image 17](#) (r01c02-21-000-0075)

[Image 18](#) (r01c02-21-000-0076)

[Image 19](#) (r01c02-21-000-0077)

[Image 20](#) (r01c02-21-000-0078)

[Image 21](#) (r01c02-21-000-0079)

[Image 22](#) (r01c02-21-000-0080)

[Image 23](#) (r01c02-21-000-0081)

[Image 24](#) (r01c02-21-000-0082)

[Image 25](#) (r01c02-21-000-0083)

[Image 26](#) (r01c02-21-000-0084)

[Image 27](#) (r01c02-21-000-0085)

[Image 28](#) (r01c02-21-000-0086)

[Image 29](#) (r01c02-21-000-0087)

[Image 30](#) (r01c02-21-000-0088)

[Image 31](#) (r01c02-21-000-0089)

[Table of Contents](#)

[Name & Place Index](#)

[About the Collection](#)

Frances Cabaniss Roberts Collection: Series 1, Subseries C, Box 2, Folder 21
White, Septima and Ada to Cabaniss, Charles Eugene, 1866-1867

[Contents](#) [Index](#) [About](#)

Name & Place Index

, Ada [6](#), [25](#), [27](#), [31](#)
, Anna [8](#), [25](#)
, Annie [16](#)
, Bettie [8](#), [9](#)
, Carrie [2](#), [27](#)
, Carry [9](#)
, Charley [1](#), [2](#), [3](#), [7](#), [9](#), [13](#), [17](#), [19](#), [21](#)
, Charlie [22](#), [24](#), [28](#)
, Chilion [2](#), [4](#), [5](#), [9](#), [13](#), [20](#), [23](#), [27](#)
, Clanda [25](#)
, Dewdrop [25](#)
, Dutch [8](#), [16](#), [20](#), [25](#)
, Eliza [14](#)
, Fannie [4](#), [8](#), [11](#)
, Ginnie [2](#)
, James [14](#), [15](#), [18](#), [27](#)
, Jennie N. [11](#)
, Jennie [17](#), [23](#), [25](#), [27](#)
, Jimmie [4](#)
, K., Mrs. [7](#)
, Kate M. [14](#)
, Kate [11](#), [14](#), [25](#), [26](#), [27](#), [31](#)
, Lon [9](#), [31](#)
, Lou [2](#), [23](#), [25](#), [27](#)
, Lucy [16](#), [19](#)
, Malone [2](#), [9](#)
, Mary Jane [9](#), [18](#), [20](#)
, Mary [15](#)
, Millie [7](#), [8](#), [29](#)
, Milton [25](#)
, Mollie [4](#), [8](#), [14](#), [23](#), [25](#)
, Robbie [9](#)
, Sallie S. [2](#), [16](#)
, Sallie [11](#), [14](#), [27](#)
, Sammie [23](#)
, Sarah [27](#)
, Searcy [16](#)
, Septima [21](#)
, Sep [8](#), [16](#), [18](#), [25](#), [31](#)
, Sophronia [9](#)
, Sue [11](#)
, Tommie [8](#), [26](#), [27](#), [29](#)
, Willie [2](#), [8](#), [11](#), [13](#), [16](#), [18](#), [25](#)
Allen, G. [2](#)
Allen, J. [18](#)
Allen, Lana [18](#), [29](#)
Allen, [11](#)
Binford, Annie [4](#)
Brinough, Lou [18](#)
Cabaniss, C. E. [30](#)
Cabaniss, Charles E. [12](#), [15](#), [21](#), [26](#), [28](#)
Cabaniss, [7](#)
Carey, Amos [16](#)
Carr, W. N. C. [12](#)
Coldwell, [23](#)
Cole, [24](#)
Collins, Cornelia [3](#), [16](#)
Drake, Buell [16](#)
Drake, [4](#), [23](#)
Eason, Frank [25](#)
Ewing, Sallie [18](#), [26](#), [31](#)
Farris, Willie [4](#)
Fielding, [4](#)
Fletcher, Allen [4](#)
Fletcher, Annie [4](#)
Gardner, [8](#)
Gattis, Tommie [4](#)
Groom, [4](#)
Humphrey, [8](#), [16](#), [18](#)
Huntsville, AL [7](#), [13](#), [17](#), [19](#)
Johnson, [29](#)
Jordan, Dr. [25](#)
Kelley, William J. [11](#)
King, Tom [2](#)
King, Will [31](#)
King, [8](#), [20](#)
Malone, Kate [8](#), [16](#), [18](#)
Malone, [3](#)
McClelland, Will [11](#), [18](#)
McWiley, [23](#)
McWilliams, [4](#)
Millen, [4](#)
Pettus, Anna [2](#)
Pettus, Hattie [18](#)
Pettus, Mollie [29](#)
Pettus, Tommie [18](#)
Phillips, Helena [18](#)
Reedy, Ella [18](#)
Rice, Millie [3](#)
Shepherd, Dr. [9](#), [27](#)
Shepherd, [4](#)
Sheppard, Dr. [11](#)
Steptoe, [1](#)
Swandon, Sallie [3](#)
Tenning, Reese [4](#)
Turner, Lou-Ann [18](#)
Turnstall, Neine [4](#)
White, Mollie [4](#)
White, S. [3](#), [18](#)
White, Septima [23](#), [29](#)
Wilborn, Sallie [16](#)
Woodborn [10](#)
Woodlawn, AL [1](#), [15](#)

Frances Cabaniss Roberts Collection

Preferred Citation: Frances Cabaniss Roberts Collection, Archives and Special Collections, M. Louis Salmon Library, University of Alabama in Huntsville, Huntsville, AL.

Collection Scope and Content: The Collection of 114 Linear ft. includes a total of 156 Archival Boxes. The Frances Cabaniss Roberts collection covers the historical records of the Cabaniss Roberts family. This collection contains extensive correspondence records of the Cabaniss Roberts family circa 1830 to 1930.

Archives/Special Collections Access Restrictions: None

Conditions Governing Use: This material may be protected under U. S. Copyright Law (Title 17, U.S. Code) which governs the making of photocopies or reproductions of copyrighted materials. You may use the digitized material for private study, scholarship, or research. Though the University of Alabama in Huntsville Archives and Special Collections has physical ownership of the material in its collections, in some cases we may not own the copyright to the material. It is the patron's obligation to determine and satisfy copyright restrictions when publishing or otherwise distributing materials found in our collections.

Provenance: Gift of Johanna Shields on October 28, 2006.



THE UNIVERSITY OF
ALABAMA IN HUNTSVILLE

**The UAH Archives and Special Collections
M. Louis Salmon Library**