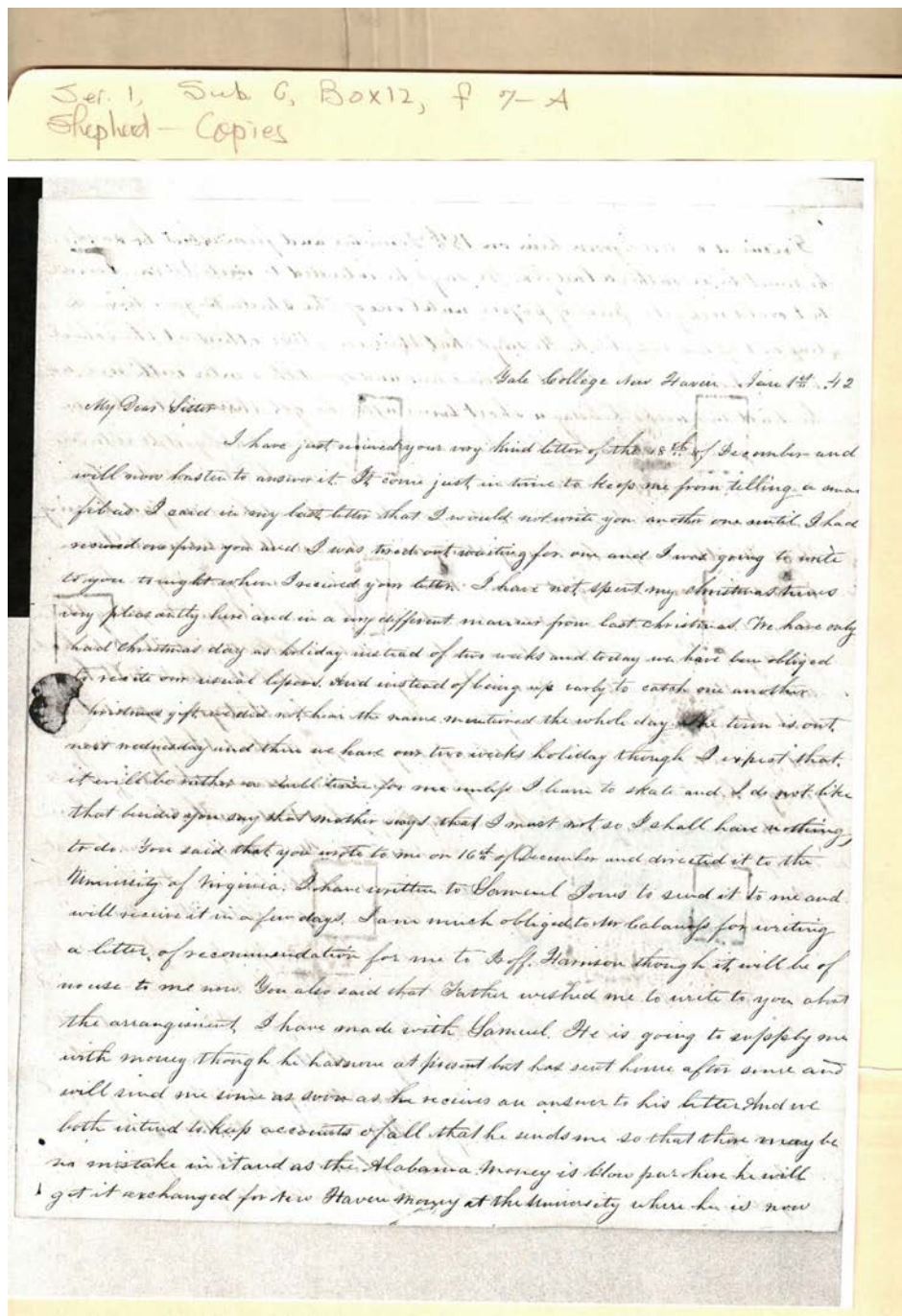


Frances Cabaniss Roberts Collection: Series 1, Subseries C, Box 12, Folder 7 - Item A
Shepherd, John W. to Ebersole, Sally, 1842

Image 1 r01c12-07-a-0032 [Contents](#) [Index](#) [About](#)



Virginia Shepherd from J. W. Shepherd

Names:

Cabaniss, Mr.
Jones, Samuel

Strough, Harrison,
Prof.

Places:

Yale College, New
Haven, CT

Types:

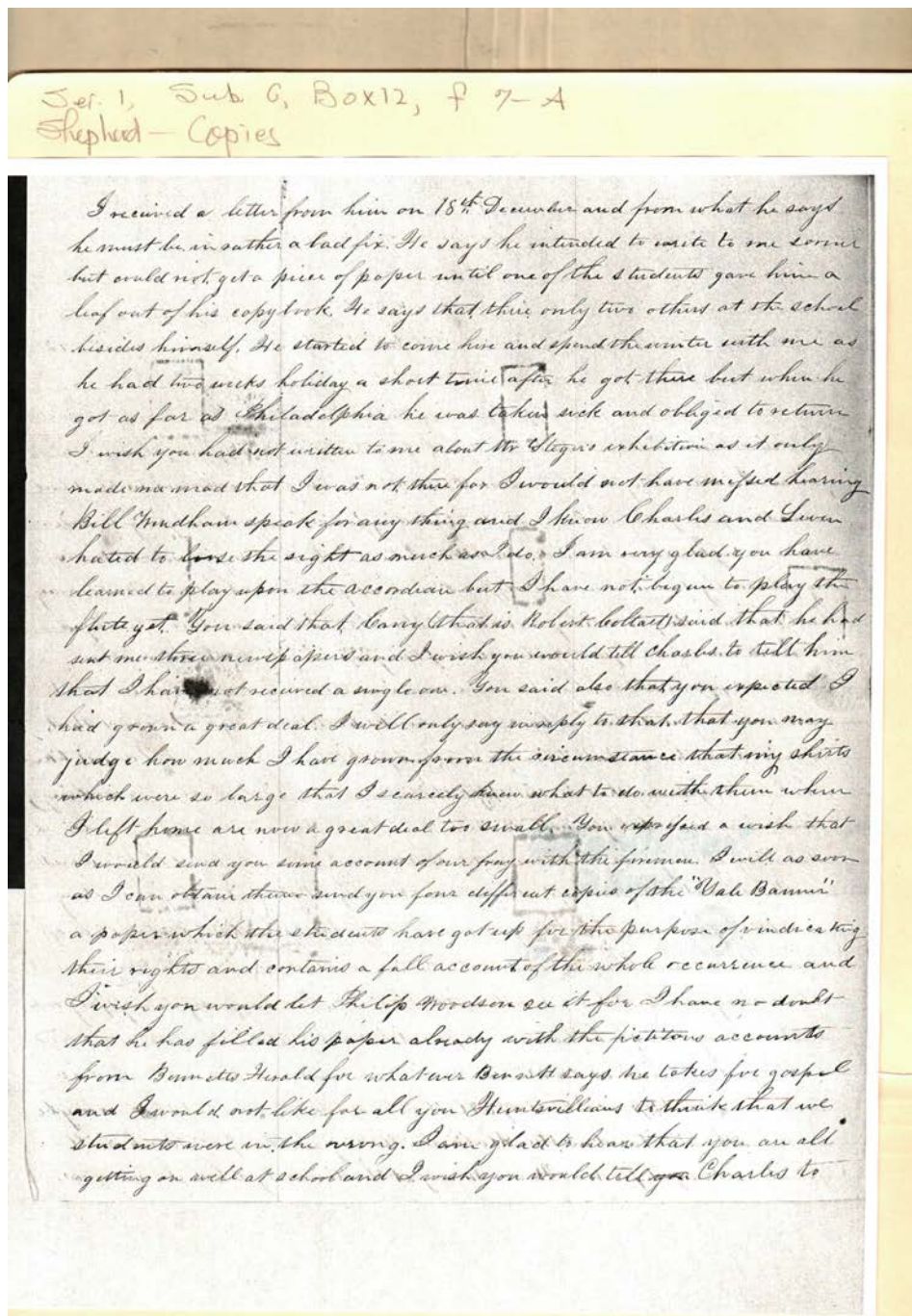
letter

Dates:

Jan 1, 1842

Frances Cabaniss Roberts Collection: Series 1, Subseries C, Box 12, Folder 7 - Item A
Shepherd, John W. to Ebersole, Sally, 1842

Image 2 r01c12-07-a-0033 [Contents](#) [Index](#) [About](#)



Virginia Shepherd from J. W. Shepherd

Names:

Coltart, Robert

Shepherd, Charles

Shepherd, Leven

Steger,

Places:

Yale College, New
Haven, CT

Types:

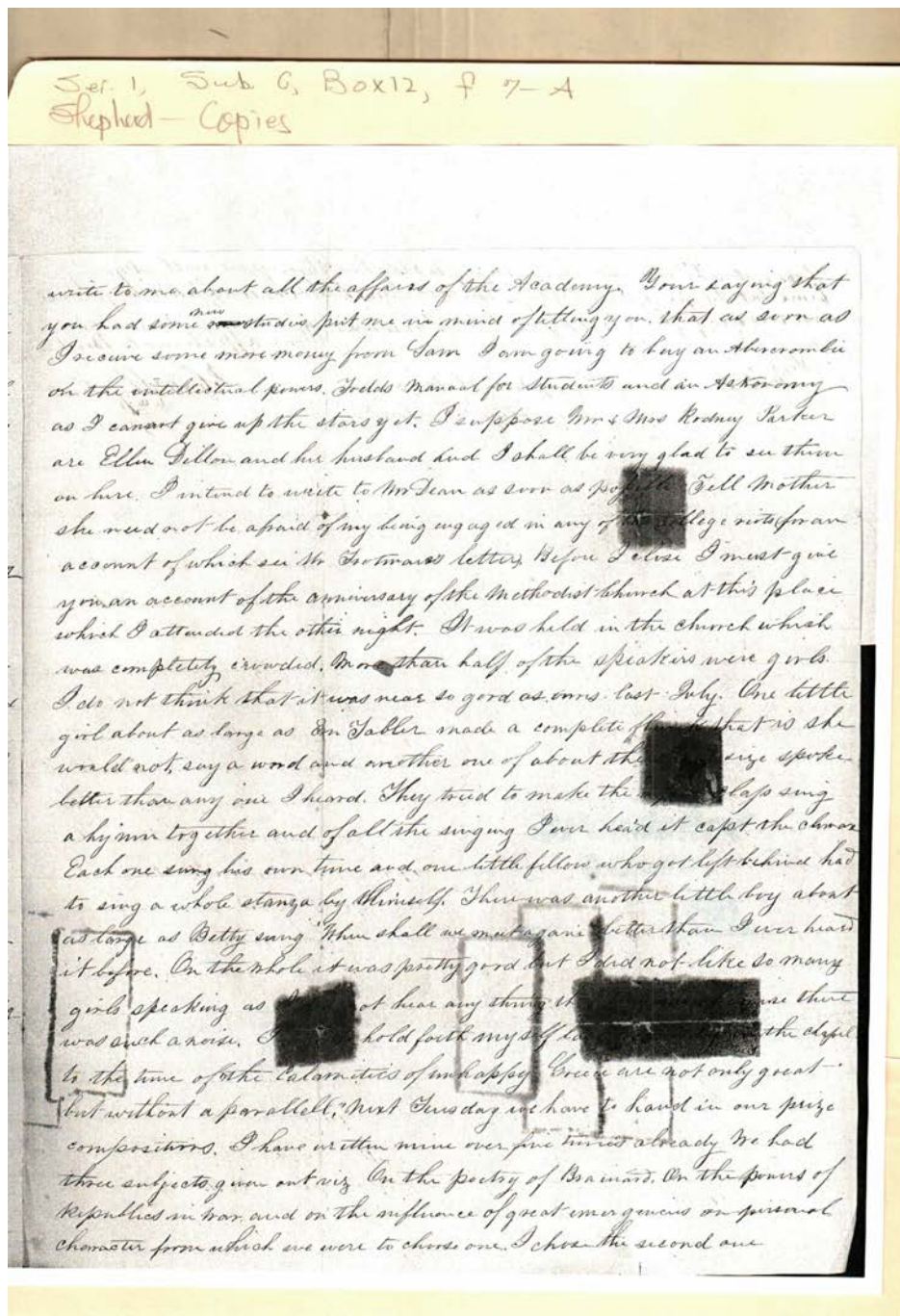
letter

Dates:

Jan 1, 1842

Frances Cabaniss Roberts Collection: Series 1, Subseries C, Box 12, Folder 7 - Item A
Shepherd, John W. to Ebersole, Sally, 1842

Image 3 r01c12-07-a-0034 [Contents](#) [Index](#) [About](#)



Virginia Shepherd from J. W. Shepherd

Names:

, Betty

Dillon, Ellen

Parker, Rodney, Mrs.

Tabler, E.

Places:

Yale College, New
Haven, CT

Types:

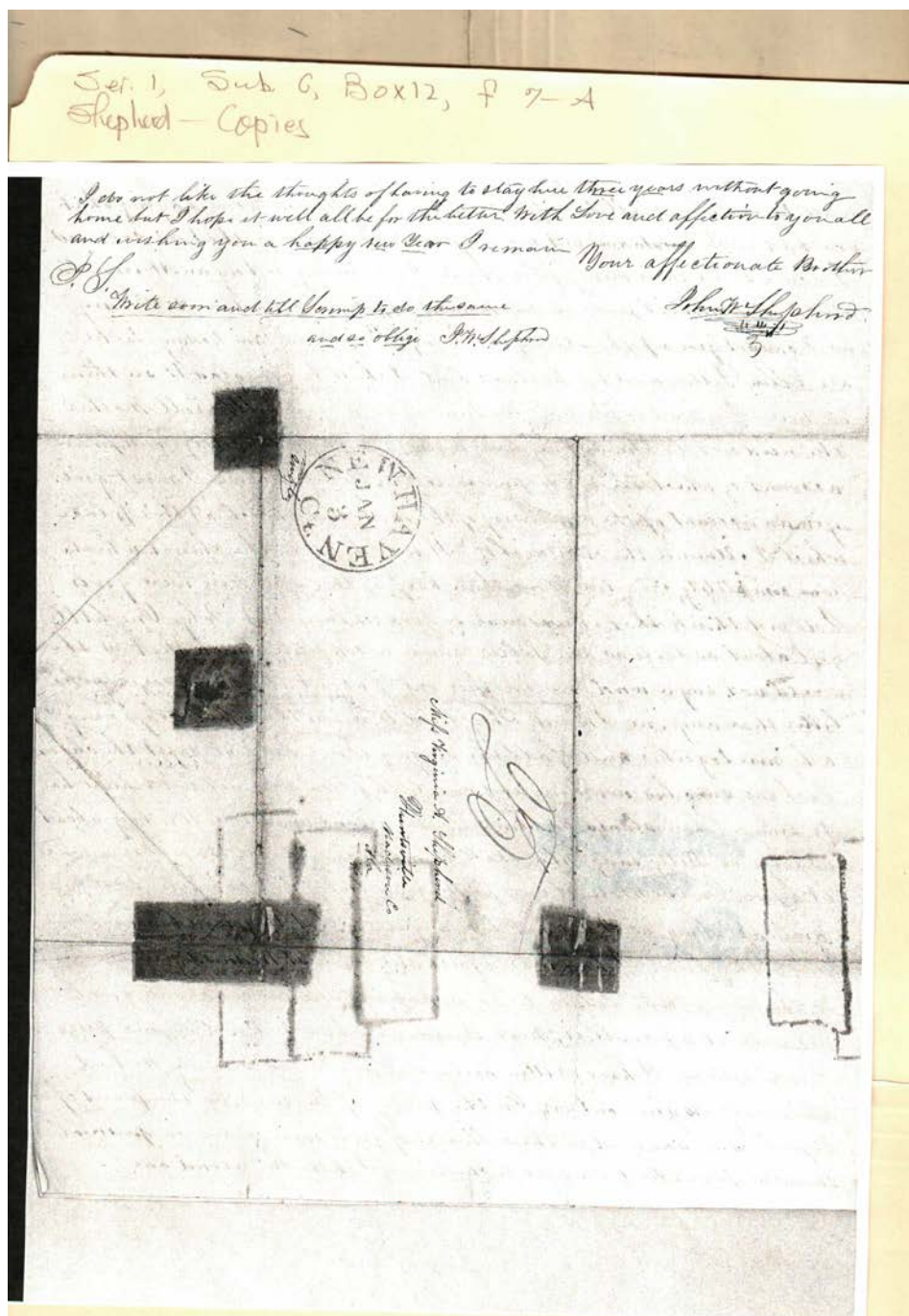
letter

Dates:

Jan 1, 1842

Frances Cabaniss Roberts Collection: Series 1, Subseries C, Box 12, Folder 7 - Item A
Shepherd, John W. to Ebersole, Sally, 1842

Image 4 r01c12-07-a-0035 [Contents](#) [Index](#) [About](#)



Virginia Shepherd from J. W. Shepherd

Names:

Shepherd, John W.

Shepherd, Virginia A.

Places:

Huntsville, AL

Yale College, New
Haven, CT

Types:

address

letter

Dates:

Jan 1, 1842

Jan 3, 1842

Image 5 r01c12-07-b-0036 [Contents](#) [Index](#) [About](#)

Ser. 1, Sub. G, Box 12, p 7-B
Shepherd - Copies

[illegible]

Virginia Shepherd from J. W. Shepherd

Names:

Shepherd, Charles

Shepherd, John

Shepherd, Leven

Places:

Yale College, New
Haven, CT

Types:

letter

Dates:

Jan 17, 1842

Virginia Shepherd from J. W. Shepherd

Shepherd, Charles

Shepherd, Leven

Shepherd, Virginia

Trotman, Mr.

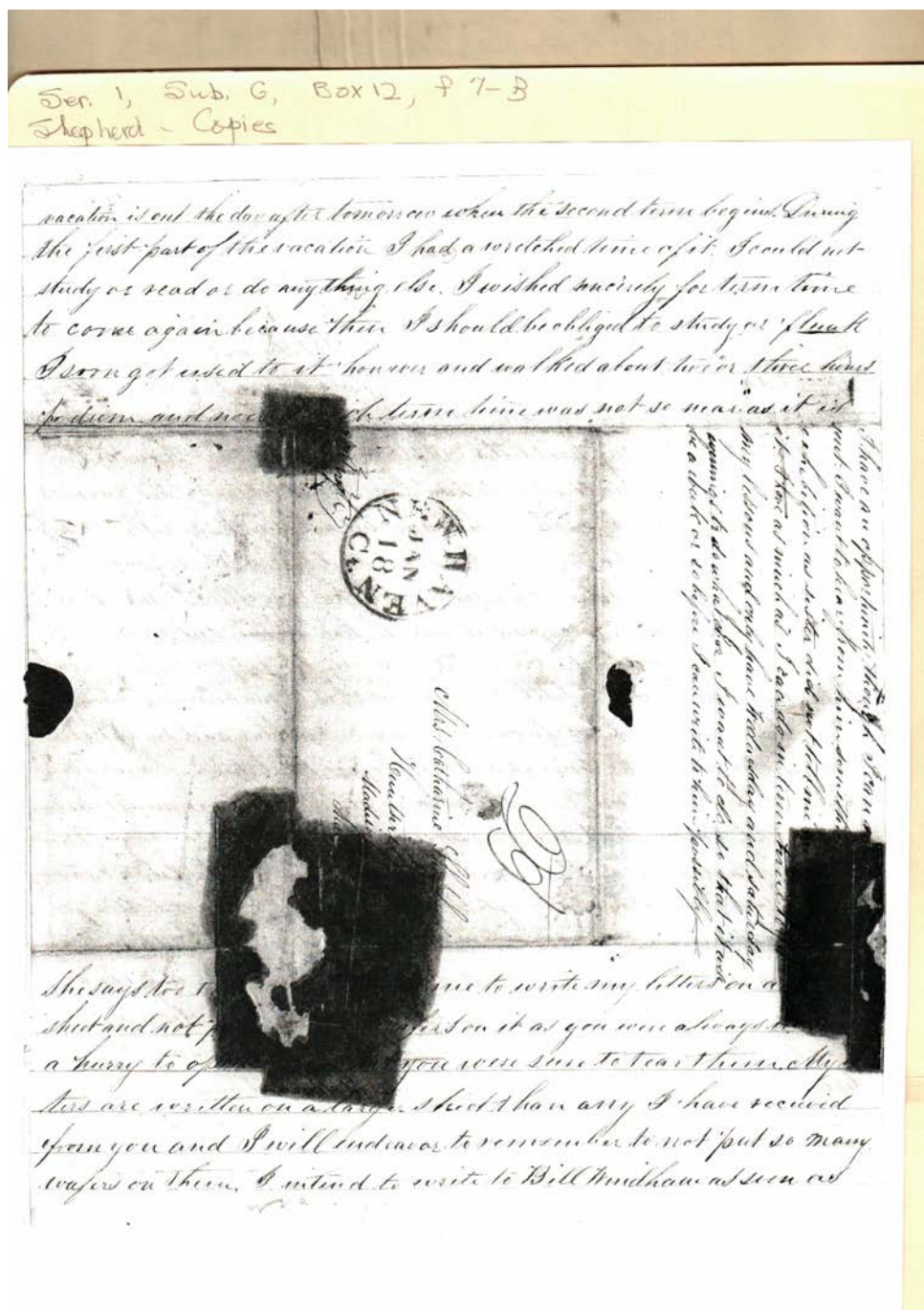
Yale College, New
Haven, CT

letter

Jan 17, 1842

Frances Cabaniss Roberts Collection: Series 1, Subseries C, Box 12, Folder 7 - Item B
Shepherd, John W. to Ebersole, Sally, 1842

Image 7 r01c12-07-b-0038 [Contents](#) [Index](#) [About](#)



Virginia Shepherd from J. W. Shepherd

Names:

Shepherd, Catharine

Windham, Bill

Places:

Huntsville, AL

Yale College, New Haven, CT

Types:

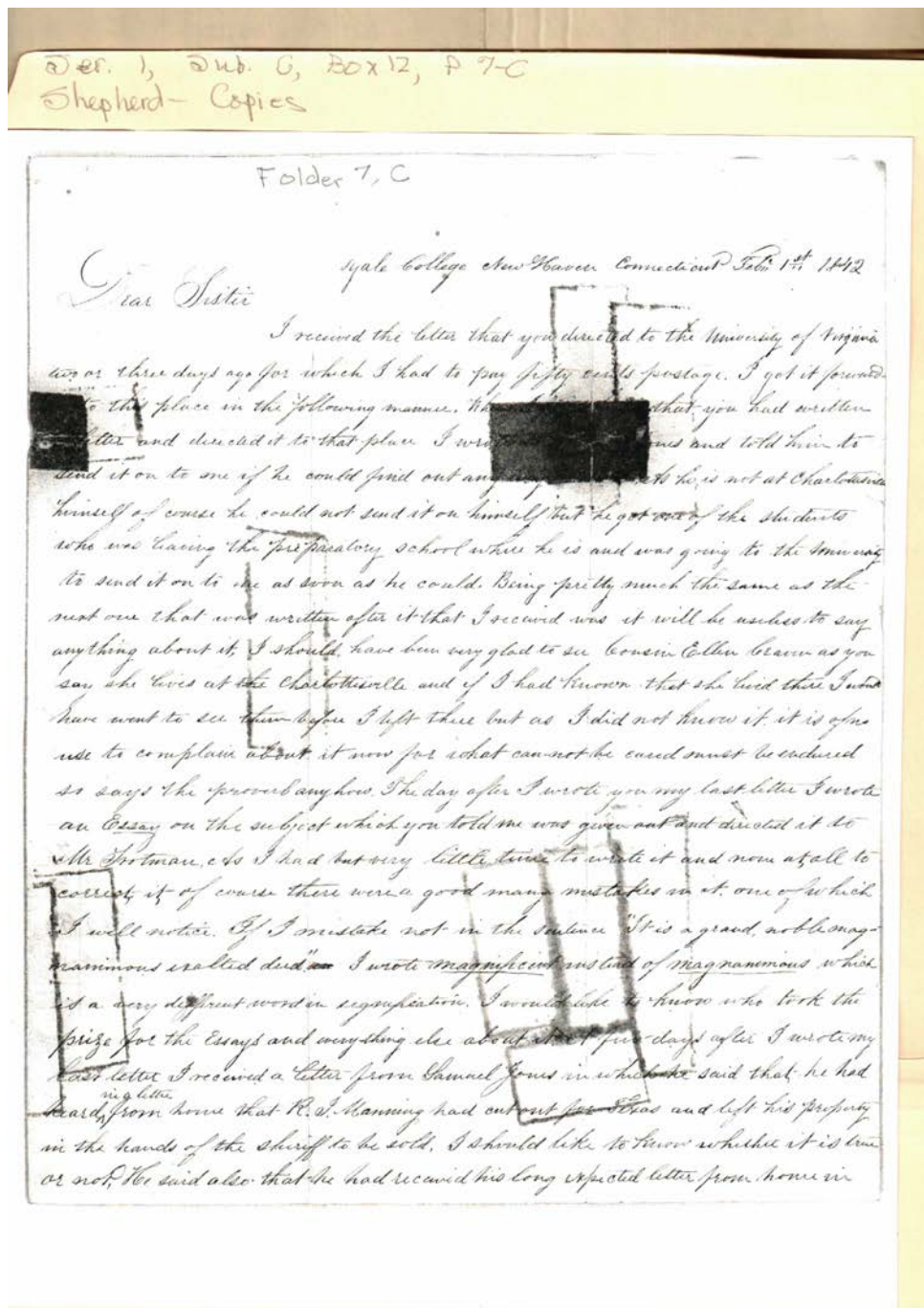
address

letter

Dates:

Jan 17, 1842

Jan 18, 1842



Virginia Shepherd from J. W. Shepherd

Names:

Craven, Ellen

Jones, Samuel

Manning, R. J.

Trotman, Mr.

Places:

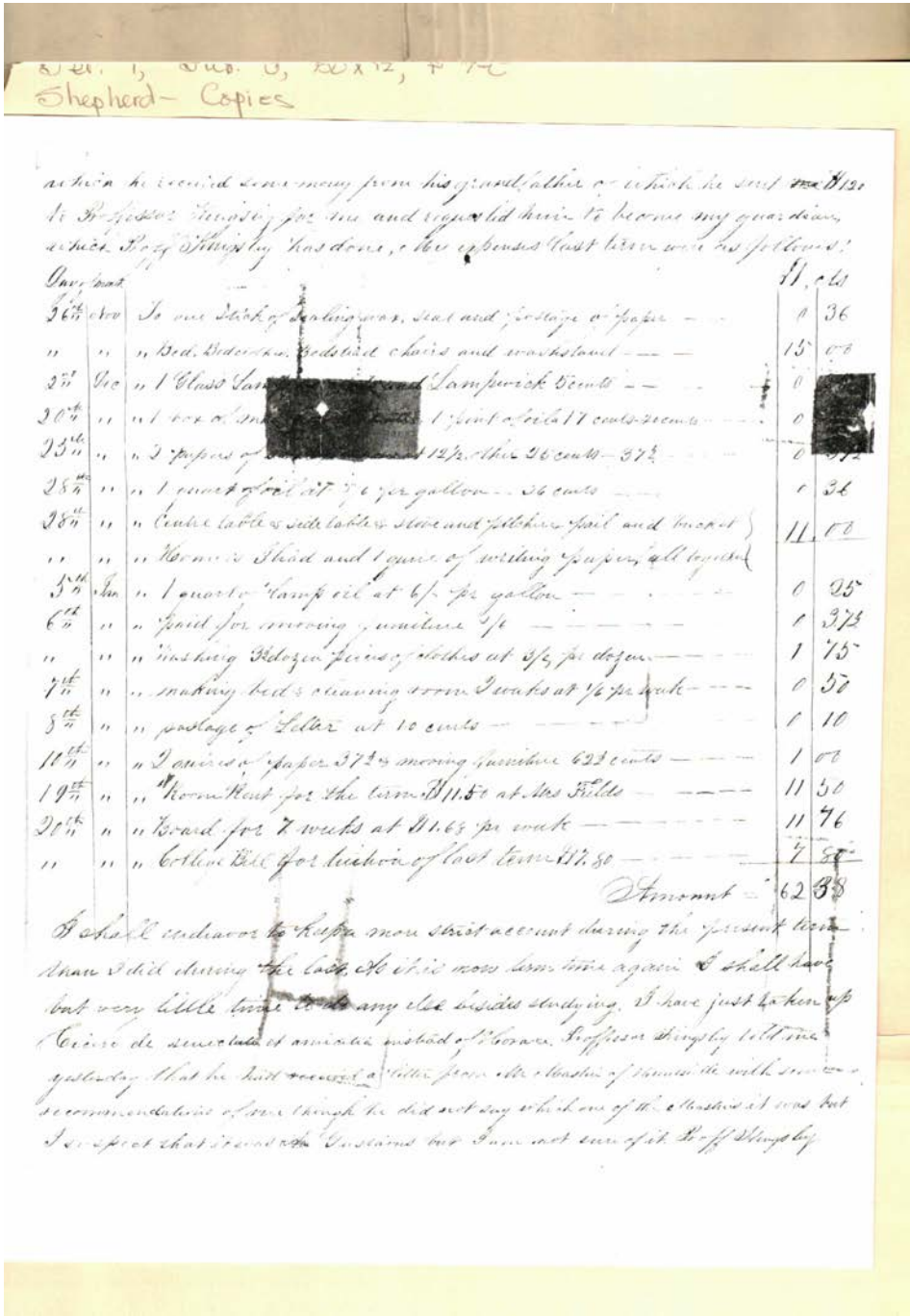
Yale College, New
Haven, CT

Types:

letter

Dates:

Feb 1, 1842



Virginia Shepherd from J. W. Shepherd

Names:

Fields, Mrs.

Kingsley, Prof.

Mastin, Mr.

Places:

Yale College, New
 Haven, CT

Types:

letter

Dates:

Feb 1, 1842

Der. 1, Sub. C, Box 12, P 7-C
Shepherd - Copies

says that I must be sure to take some high appointment when they are g.
rect and that I must study very hard. I have not heard yet from Sam or
it is true about his losing his money at Philadelphia but as soon as I do I will
acquaint you of it. The celebrated Dickens is going to visit Mr. Brown next week. There are
receive him and last Wednesday night he was shown a number of fine
of the Bostonian. We are to have the chair which he
are shall out Prof. Sullivan and as soon as he can
attended to the hypothesis are to be present and speak from each
of them of them. As you said in your letter I would send me
any books of I wish them I would be much obliged to you to send
me my Botany book and Botany if you do not have any use for
yourself. I should very much to have your Astronomy but I can
one here for a dollar with an atlas so that it would be better
you to keep that. The reason why I want those books is because I wish
to study them more as I have nothing to do at that time. I
intend to keep on in summer, all the flowers I can collect here in
the Spring which will soon be here now. I shall pass the most
of my vacation in studying Botany and learning to play on the flute.
Look at it is nearly ten o'clock at which time I must be on bed. I
bid you farewell farewell for the present.

P.S. I would have written some but I
broke the key of my drawer in which I
had all my papers and pen &c. I.W.S.

Yours affectionate Mother
John W. Shepherd

Feb 3rd 1842

I break the seal of my letter to inform you that I have just received
your letter dated Jan 24. You need not put yourself in a hurry about
sending me money as I have plenty of clothes to last me for a good while
yet and I do not have to pay any bills for board or college expenses until

Virginia Shepherd from J. W. Shepherd

Names:

Shepherd, John

Sullivan, Prof.

Places:

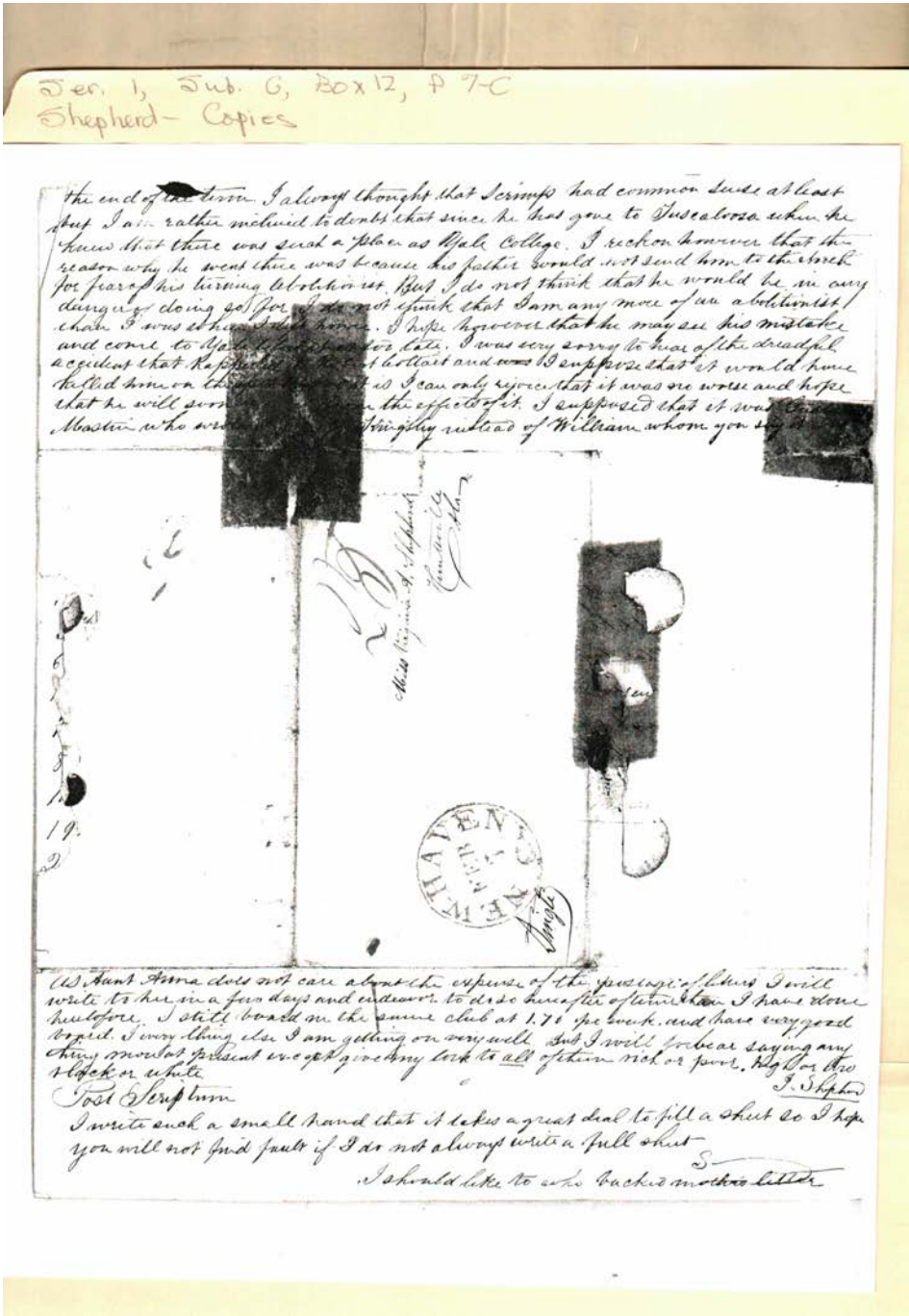
Yale College, New
Haven, CT

Types:

letter

Dates:

Feb 1, 1842



Virginia Shepherd from J. W. Shepherd

Names:

, Anna, Aunt	Coltart, Robert	Shepherd, John
, William	Mastin,	Shepherd, Virginia A.

Places:

Huntsville, AL	Yale College, New Haven, CT
----------------	-----------------------------

Types:

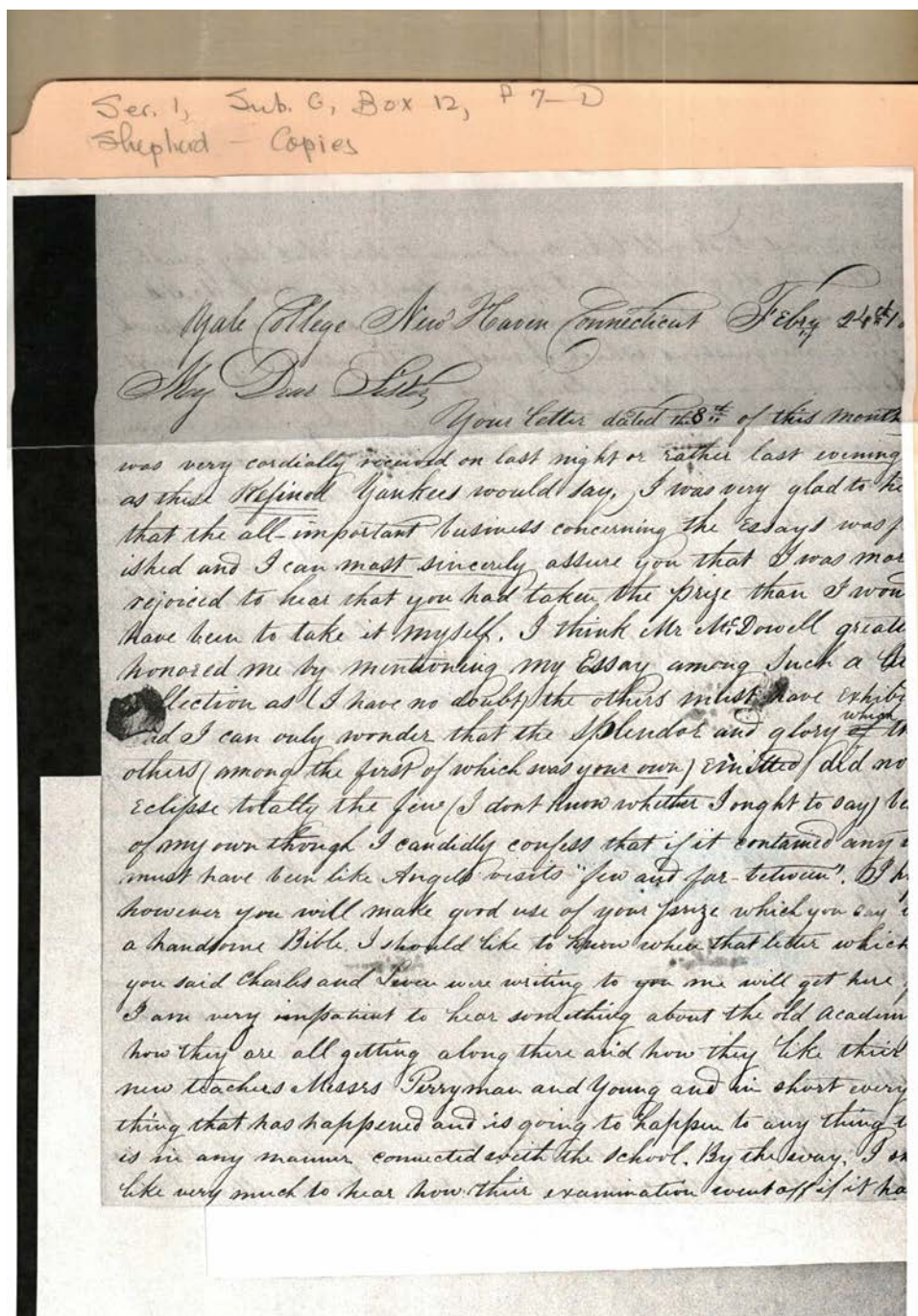
address	letter
---------	--------

Dates:

Feb 3, 1842	Feb 7, 1842
-------------	-------------

Frances Cabaniss Roberts Collection: Series 1, Subseries C, Box 12, Folder 7 - Item D
Shepherd, John W. to Ebersole, Sally, 1842

Image 12 r01c12-07-d-0043 [Contents](#) [Index](#) [About](#)



Virginia Shepherd from J. W. Shepherd

Names:

McDowell,

Perryman,

Young,

Places:

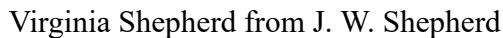
Yale College, New
Haven, CT

Types:

letter

Dates:

Feb 24, 1842



, Mima
Hazlerigg,

Jones, Sam
Shepherd, Charles

Shepherd, Leven
Steger,

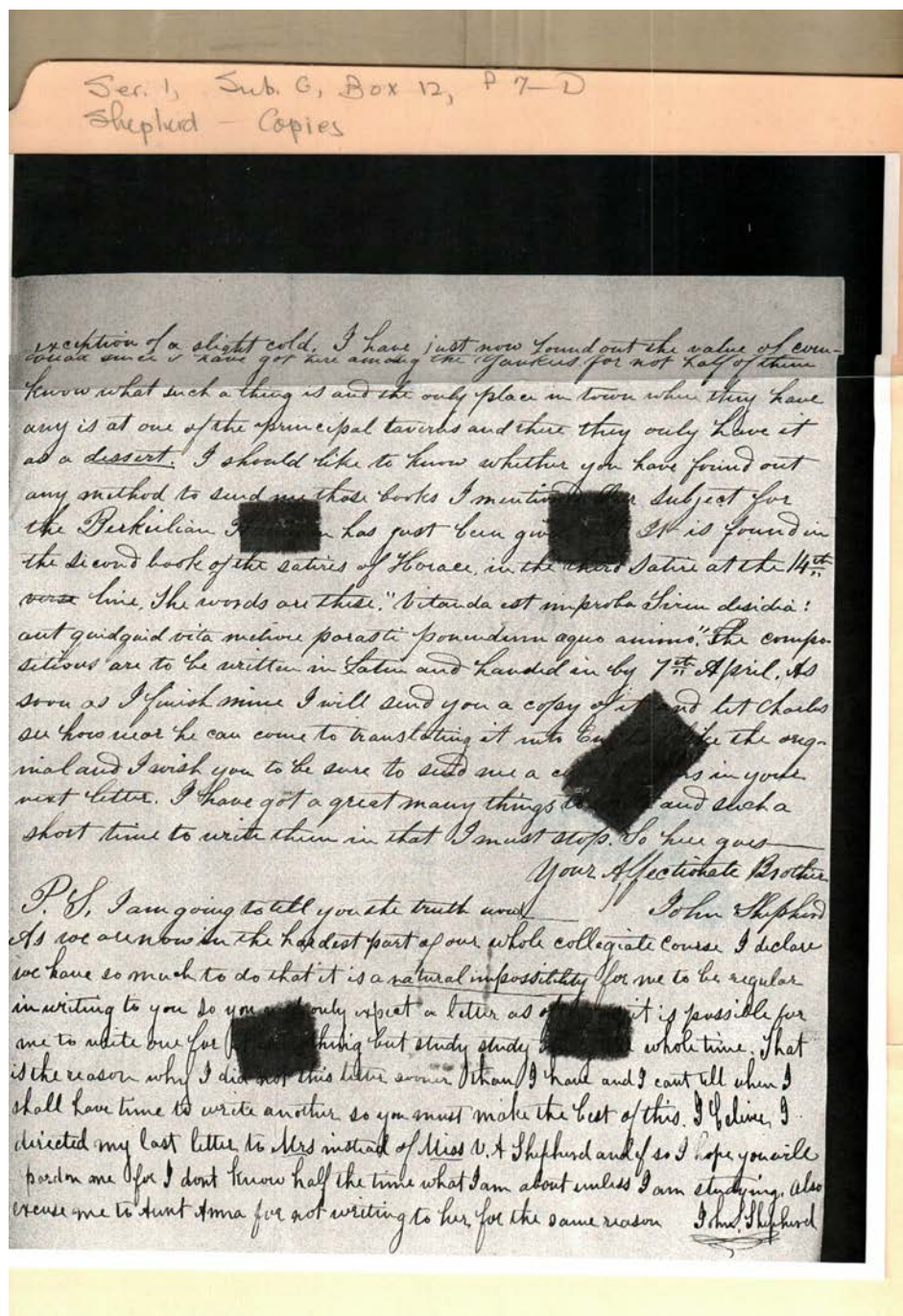
Yale College, New
Haven, CT

letter

Feb 24, 1842

Frances Cabaniss Roberts Collection: Series 1, Subseries C, Box 12, Folder 7 - Item D
Shepherd, John W. to Ebersole, Sally, 1842

Image 14 r01c12-07-d-0045 [Contents](#) [Index](#) [About](#)



Virginia Shepherd from J. W. Shepherd

Names:

Shepherd, Charles

Shepherd, John

Shepherd, V. A.

Places:

Yale College, New
Haven, CT

Types:

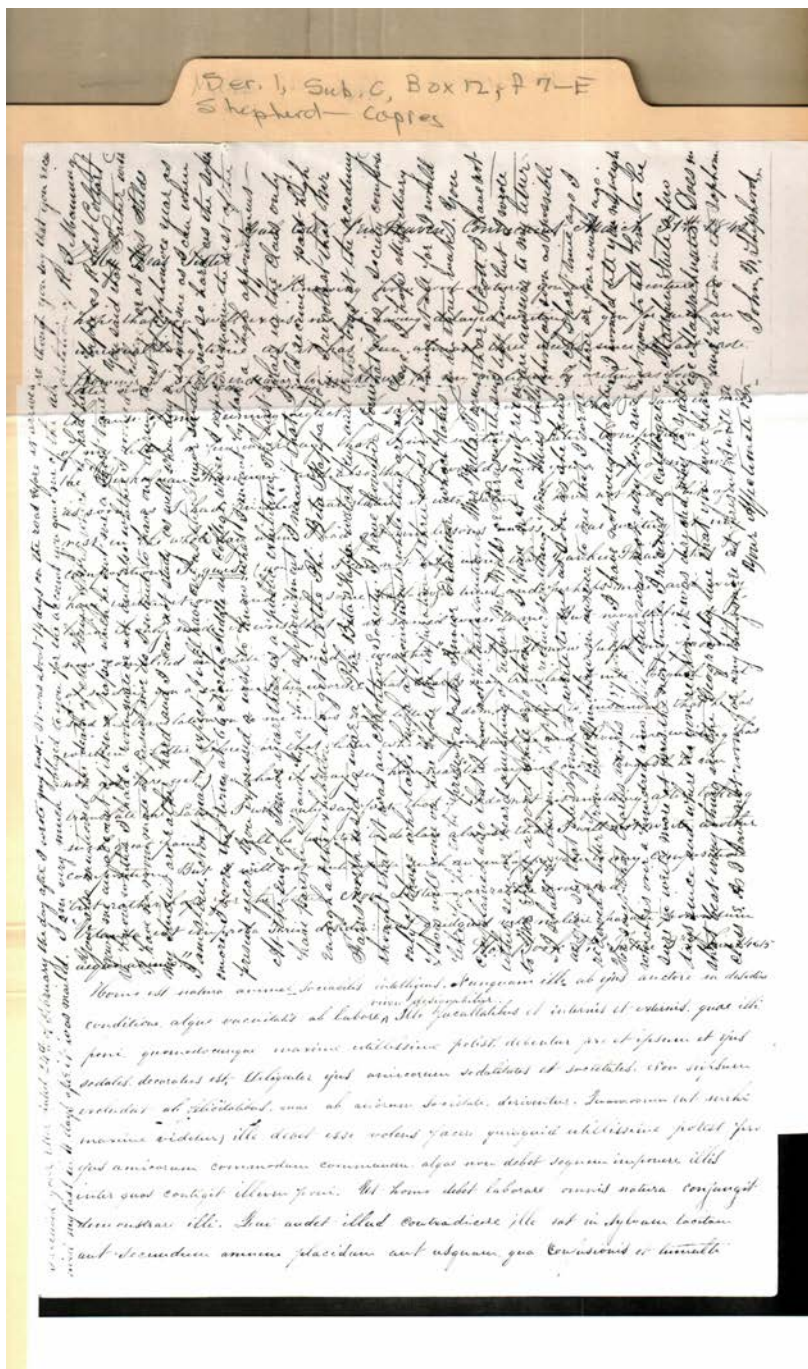
letter

Dates:

Feb 24, 1842

Frances Cabaniss Roberts Collection: Series 1, Subseries C, Box 12, Folder 7 - Item E
Shepherd, John W. to Ebersole, Sally, 1842

Image 15 r01c12-07-e-0046 [Contents](#) [Index](#) [About](#)



Virginia Shepherd from J. W. Shepherd

Names:

Coltart, Robert
Farnsworth,

Firds, Mrs.
Manning, R. J.

Shepherd, John W/
Wells,

Places:

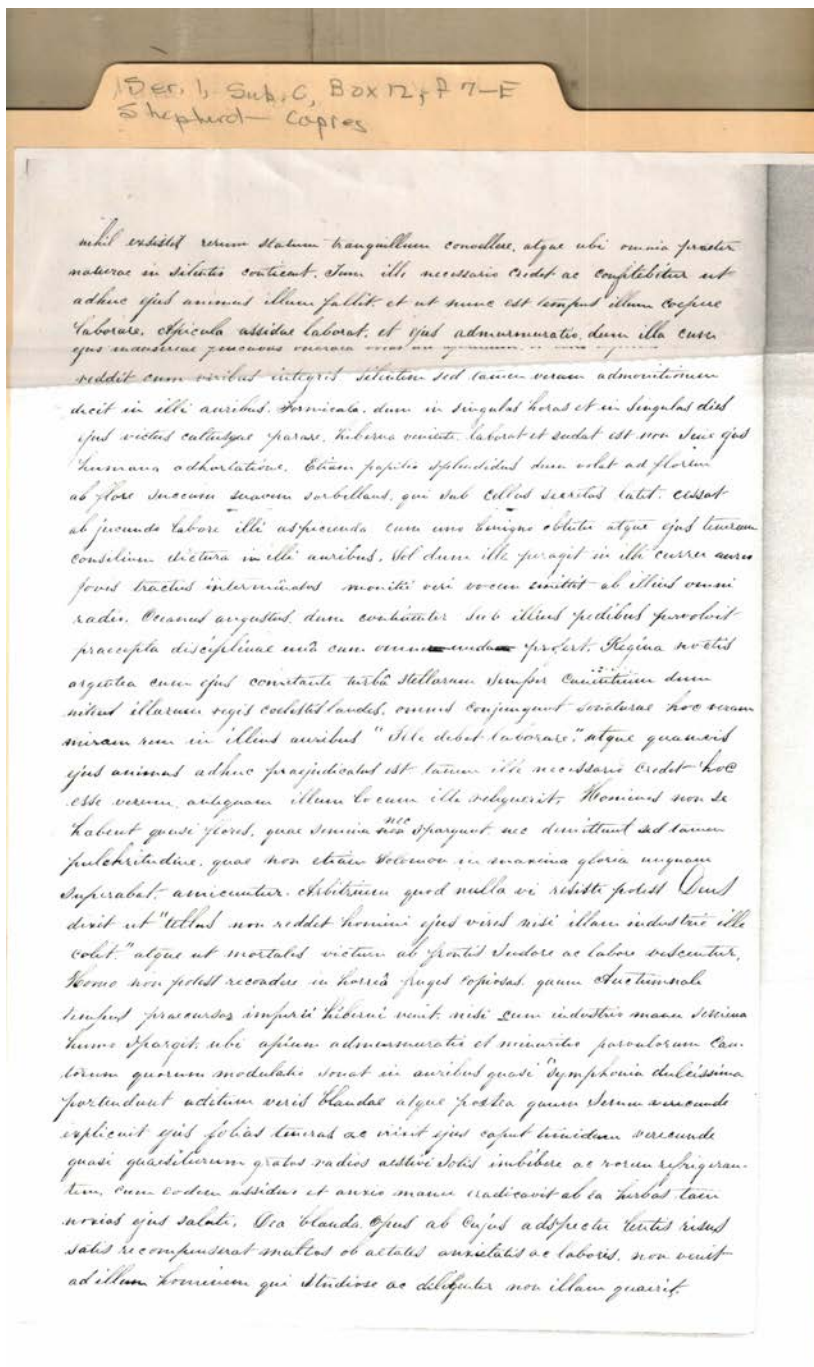
Yale College, New
Haven, CT

Types:

letter

Dates:

March 31, 1842



Virginia Shepherd from J. W. Shepherd

Names:

Latin

Places:

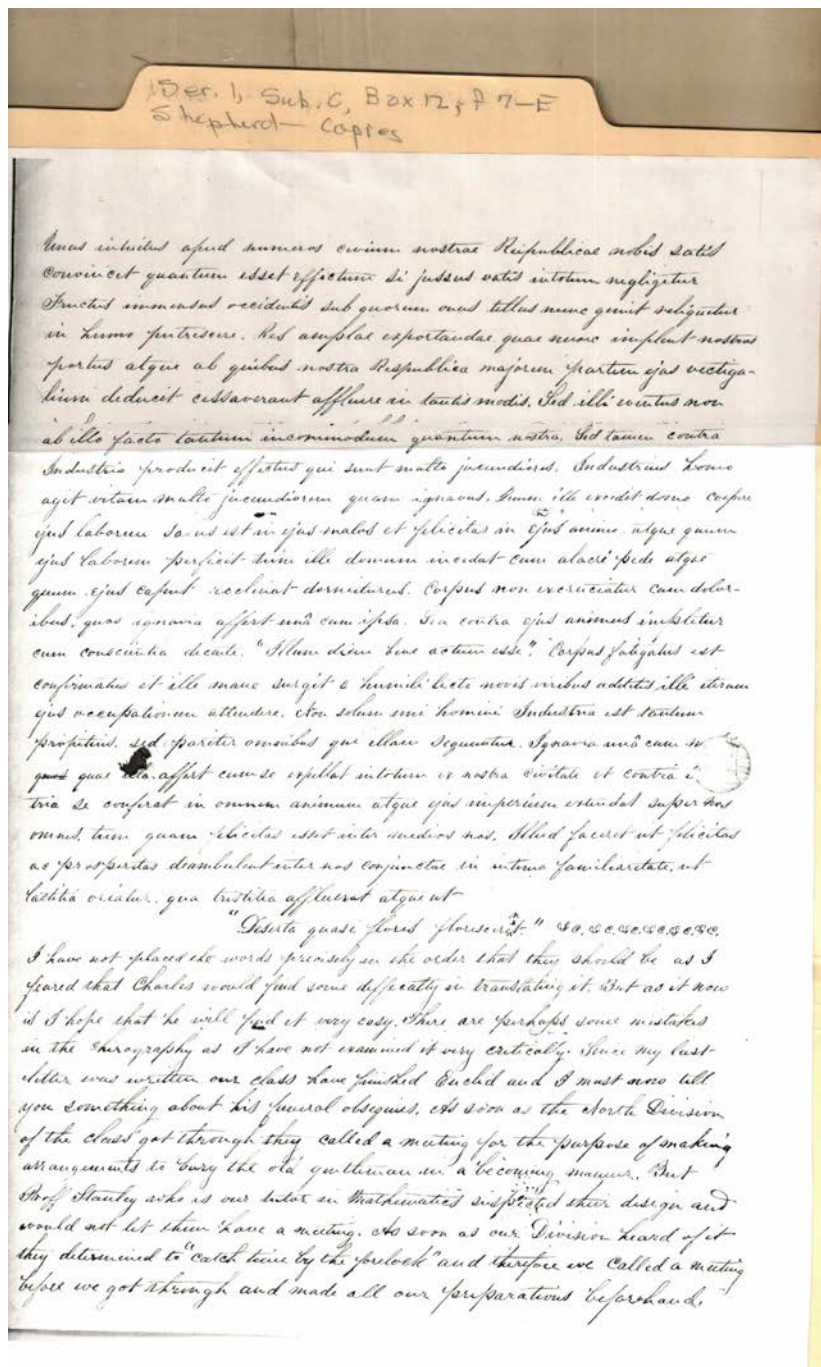
Yale College, New
 Haven, CT

Types:

letter

Dates:

March 31, 1842



Virginia Shepherd from J. W. Shepherd

Names:

Shepherd, Charles

Stanley, Prof.

Places:

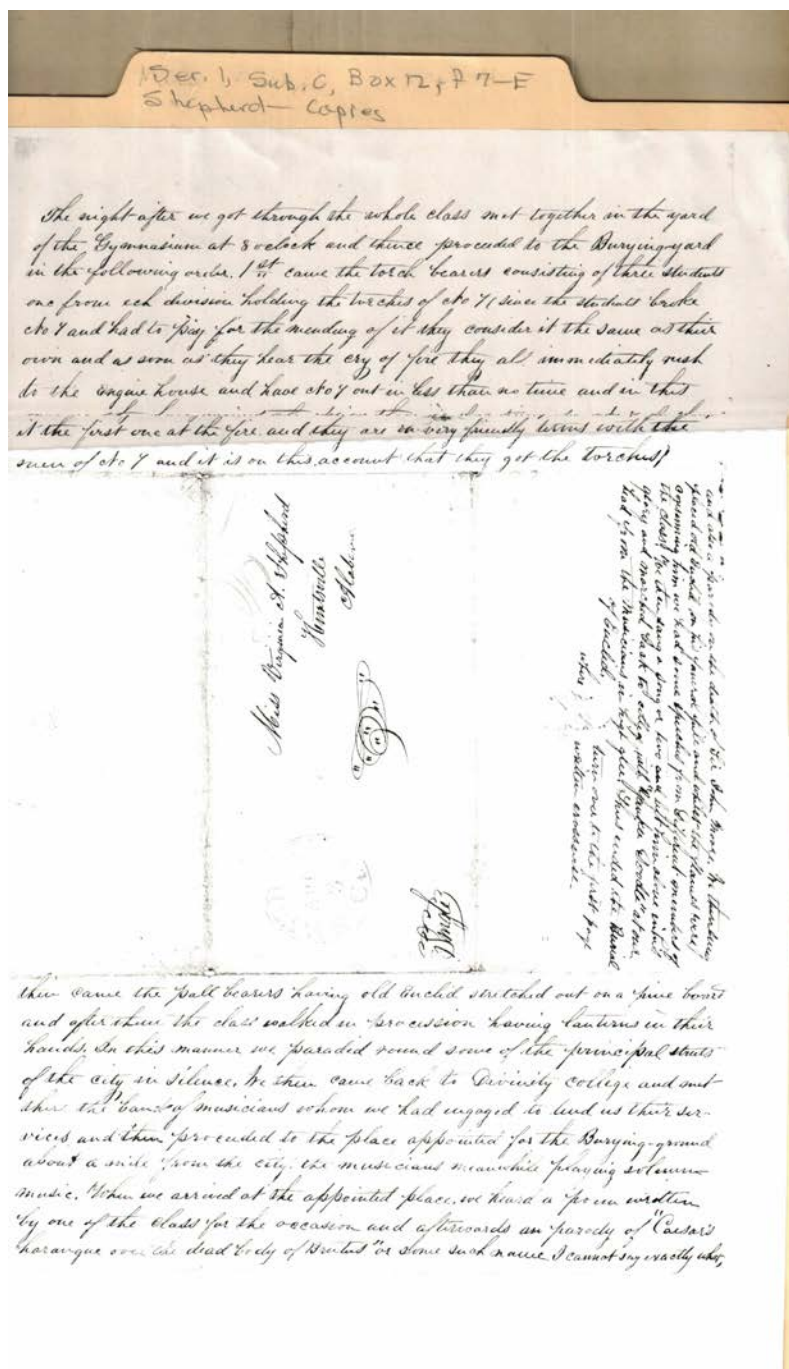
Yale College, New
 Haven, CT

Types:

letter

Dates:

March 31, 1842



Virginia Shepherd from J. W. Shepherd

Names:

Euclid and the
 Burying Ground

Moore, John, Sir
 Shepherd, Virginia A.

Places:

Huntsville, AL

Yale College, New
 Haven, CT

Types:

address

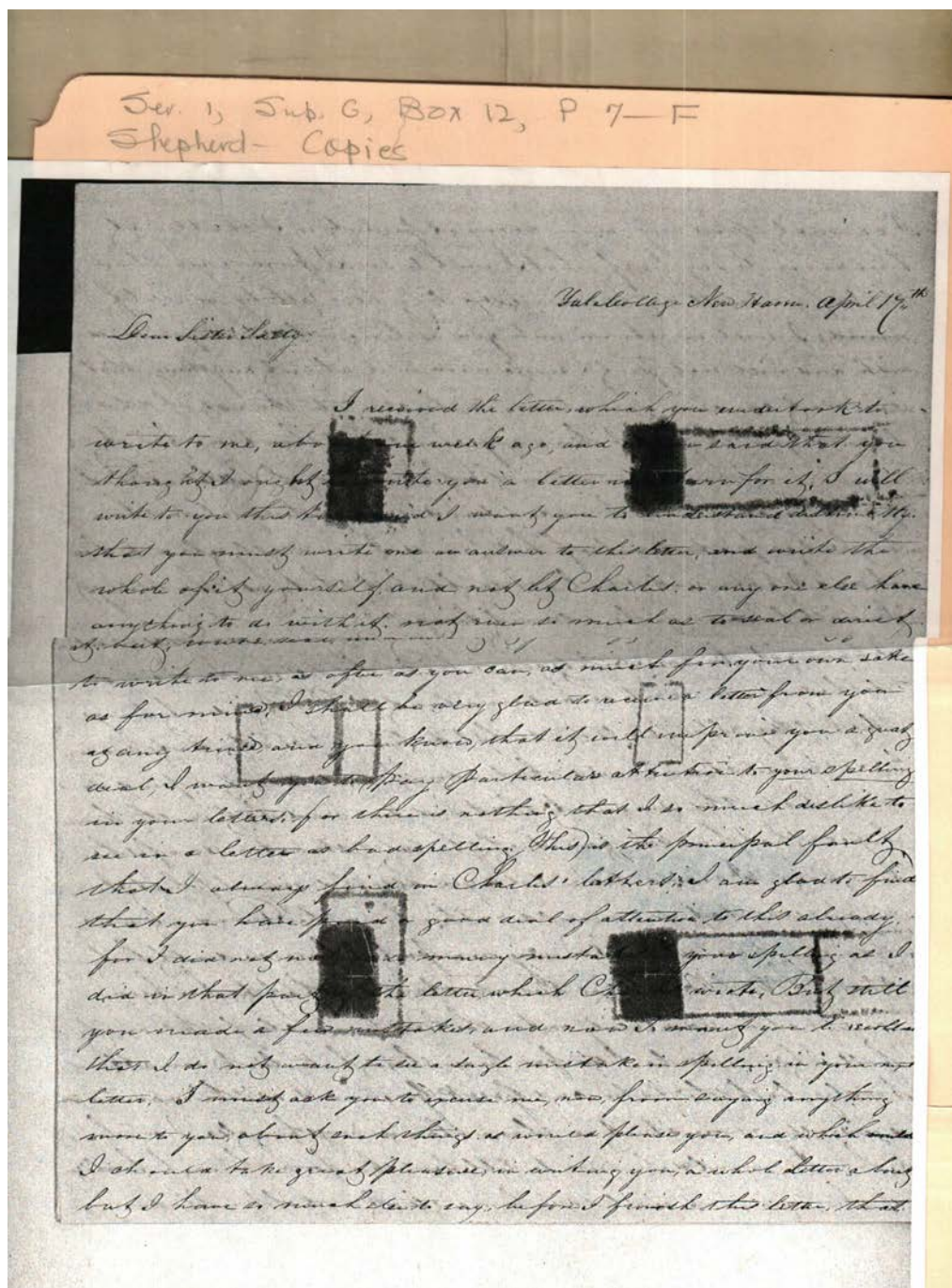
letter

Dates:

March 31, 1842

Frances Cabaniss Roberts Collection: Series 1, Subseries C, Box 12, Folder 7 - Item F
Shepherd, John W. to Ebersole, Sally, 1842

Image 19 r01c12-07-f-0050 [Contents](#) [Index](#) [About](#)



Sally Ebersole from J. W. Shepherd

Names:

Ebersole Sally,
Aunt

Shepherd, Charles

Places:

Yale College, New
Haven, CT

Types:

letter

Dates:

April 17, 1842



Shepherd, Charles

Yale College, New
Haven, CT

letter

April 17, 1842

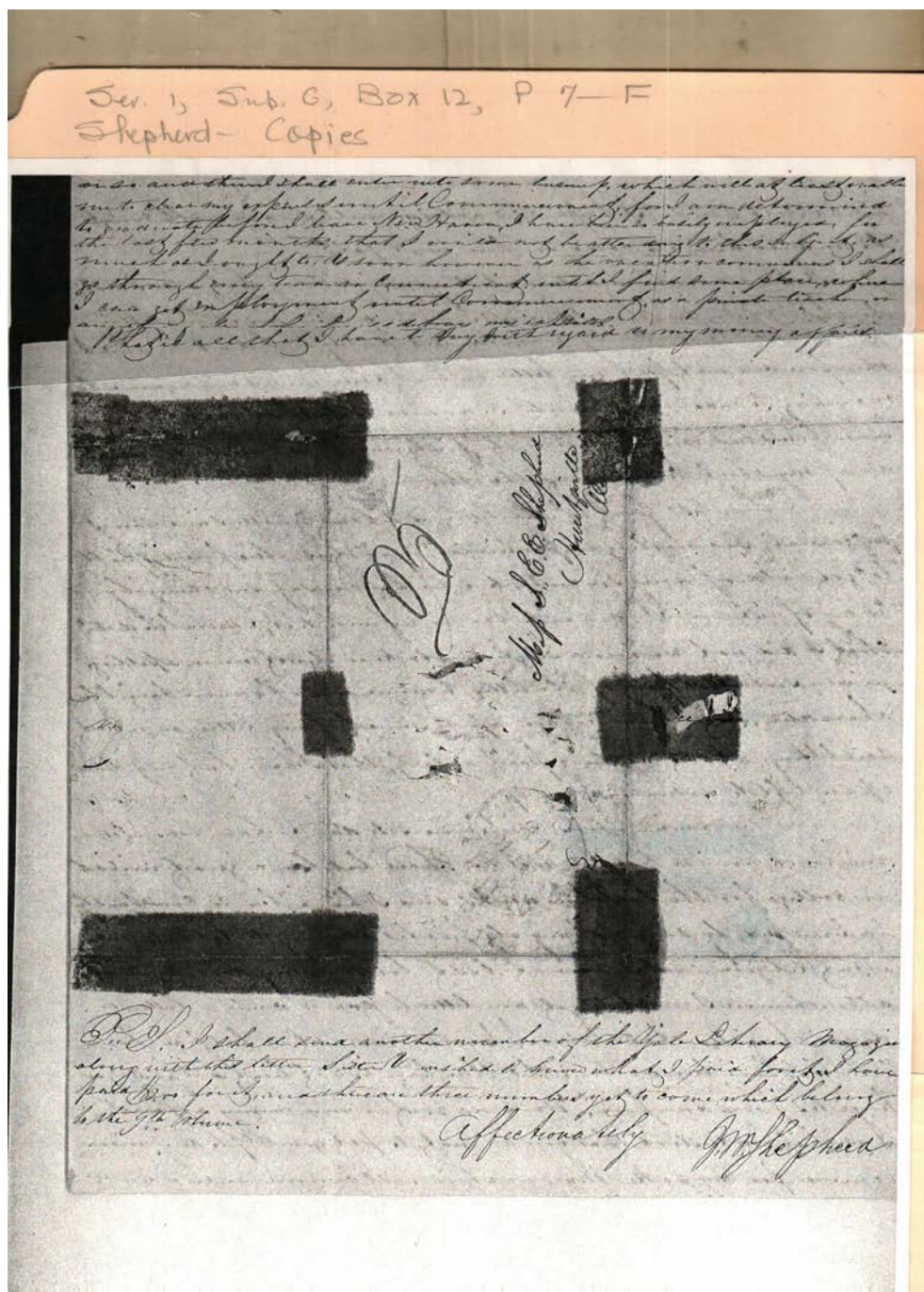


Shepherd, Charles

Yale College, New
Haven, CT

letter

April 17, 1842



Sally Ebersole from J. W. Shepherd

Names:

Shepherd, J. W.

Shepherd, S. E. E.,
Miss

Places:

Huntsville, AL

Yale College, New
Haven, CT

Types:

address

letter

Dates:

April 17, 1842

Frances Cabaniss Roberts Collection: Series 1, Subseries C, Box 12, Folder 7
Shepherd, John W. to Ebersole, Sally, 1842

[Contents](#) [Index](#) [About](#)

Table of Contents

[Image 1 \(Item A\)](#) (r01c12-07-a-0032)

[Image 2 \(Item A\)](#) (r01c12-07-a-0033)

[Image 3 \(Item A\)](#) (r01c12-07-a-0034)

[Image 4 \(Item A\)](#) (r01c12-07-a-0035)

[Image 5 \(Item B\)](#) (r01c12-07-b-0036)

[Image 6 \(Item B\)](#) (r01c12-07-b-0037)

[Image 7 \(Item B\)](#) (r01c12-07-b-0038)

[Image 8 \(Item C\)](#) (r01c12-07-c-0039)

[Image 9 \(Item C\)](#) (r01c12-07-c-0040)

[Image 10 \(Item C\)](#) (r01c12-07-c-0041)

[Image 11 \(Item C\)](#) (r01c12-07-c-0042)

[Image 12 \(Item D\)](#) (r01c12-07-d-0043)

[Image 13 \(Item D\)](#) (r01c12-07-d-0044)

[Image 14 \(Item D\)](#) (r01c12-07-d-0045)

[Image 15 \(Item E\)](#) (r01c12-07-e-0046)

[Image 16 \(Item E\)](#) (r01c12-07-e-0047)

[Image 17 \(Item E\)](#) (r01c12-07-e-0048)

[Image 18 \(Item E\)](#) (r01c12-07-e-0049)

[Image 19 \(Item F\)](#) (r01c12-07-f-0050)

[Image 20 \(Item F\)](#) (r01c12-07-f-0051)

[Image 21 \(Item F\)](#) (r01c12-07-f-0052)

[Image 22 \(Item F\)](#) (r01c12-07-f-0053)

[Table of Contents](#)
[Name & Place Index](#)
[About the Collection](#)

Frances Cabaniss Roberts Collection: Series 1, Subseries C, Box 12, Folder 7

Shepherd, John W. to Ebersole, Sally, 1842

[Contents](#) [Index](#) [About](#)

Name & Place Index

, Anna, Aunt [11](#)
, Betty [3](#)
, Mima [13](#)
, William [11](#)
Cabaniss, Mr. [1](#)
Coltart, Robert [2](#), [11](#), [15](#)
Craven, Ellen [8](#)
Dillon, Ellen [3](#)
Ebersole Sally, Aunt [19](#)
Euclid and the Burying Ground [18](#)
Farnsworth, [15](#)
Fields, Mrs. [9](#)
Firds, Mrs. [15](#)
Hazlerigg, [13](#)
Huntsville, AL [4](#), [7](#), [11](#), [18](#), [22](#)
Jones, Samuel [1](#), [8](#)
Jones, Sam [13](#)
Kingsley, Prof. [9](#)
Latin [16](#)
Manning, R. J. [8](#), [15](#)
Mastin, Mr. [9](#)
Mastin, [11](#)
McDowell, [12](#)
Moore, John, Sir [18](#)

Parker, Rodney, Mrs. [3](#)
Perryman, [12](#)
Shepherd, Catharine [7](#)
Shepherd, Charles [2](#), [5](#), [6](#), [13](#), [14](#), [17](#), [19](#), [20](#), [21](#)
Shepherd, J. W. [22](#)
Shepherd, John W. [4](#)
Shepherd, John W/ [15](#)
Shepherd, John [5](#), [10](#), [11](#), [14](#)
Shepherd, Leven [2](#), [5](#), [6](#), [13](#)
Shepherd, S. E. E., Miss [22](#)
Shepherd, V. A. [14](#)
Shepherd, Virginia A. [4](#), [11](#), [18](#)
Shepherd, Virginia [6](#)
Stanley, Prof. [17](#)
Steger, [2](#), [13](#)
Strough, Harrison, Prof. [1](#)
Sullivan, Prof. [10](#)
Tabler, E. [3](#)
Trotman, Mr. [6](#), [8](#)
Wells, [15](#)
Windham, Bill [7](#)
Yale College, New Haven, CT [1](#), [2](#), [3](#), [4](#), [5](#), [6](#), [7](#), [8](#), [9](#),
[10](#), [11](#), [12](#), [13](#), [14](#), [15](#), [16](#), [17](#), [18](#), [19](#), [20](#), [21](#), [22](#)
Young, [12](#)

Frances Cabaniss Roberts Collection

Preferred Citation: Frances Cabaniss Roberts Collection, Archives and Special Collections, M. Louis Salmon Library, University of Alabama in Huntsville, Huntsville, AL.

Collection Scope and Content: The Collection of 114 Linear ft. includes a total of 156 Archival Boxes. The Frances Cabaniss Roberts collection covers the historical records of the Cabaniss Roberts family. This collection contains extensive correspondence records of the Cabaniss Roberts family circa 1830 to 1930.

Archives/Special Collections Access Restrictions: None

Conditions Governing Use: This material may be protected under U. S. Copyright Law (Title 17, U.S. Code) which governs the making of photocopies or reproductions of copyrighted materials. You may use the digitized material for private study, scholarship, or research. Though the University of Alabama in Huntsville Archives and Special Collections has physical ownership of the material in its collections, in some cases we may not own the copyright to the material. It is the patron's obligation to determine and satisfy copyright restrictions when publishing or otherwise distributing materials found in our collections.

Provenance: Gift of Johanna Shields on October 28, 2006.



**The UAH Archives and Special Collections
M. Louis Salmon Library**