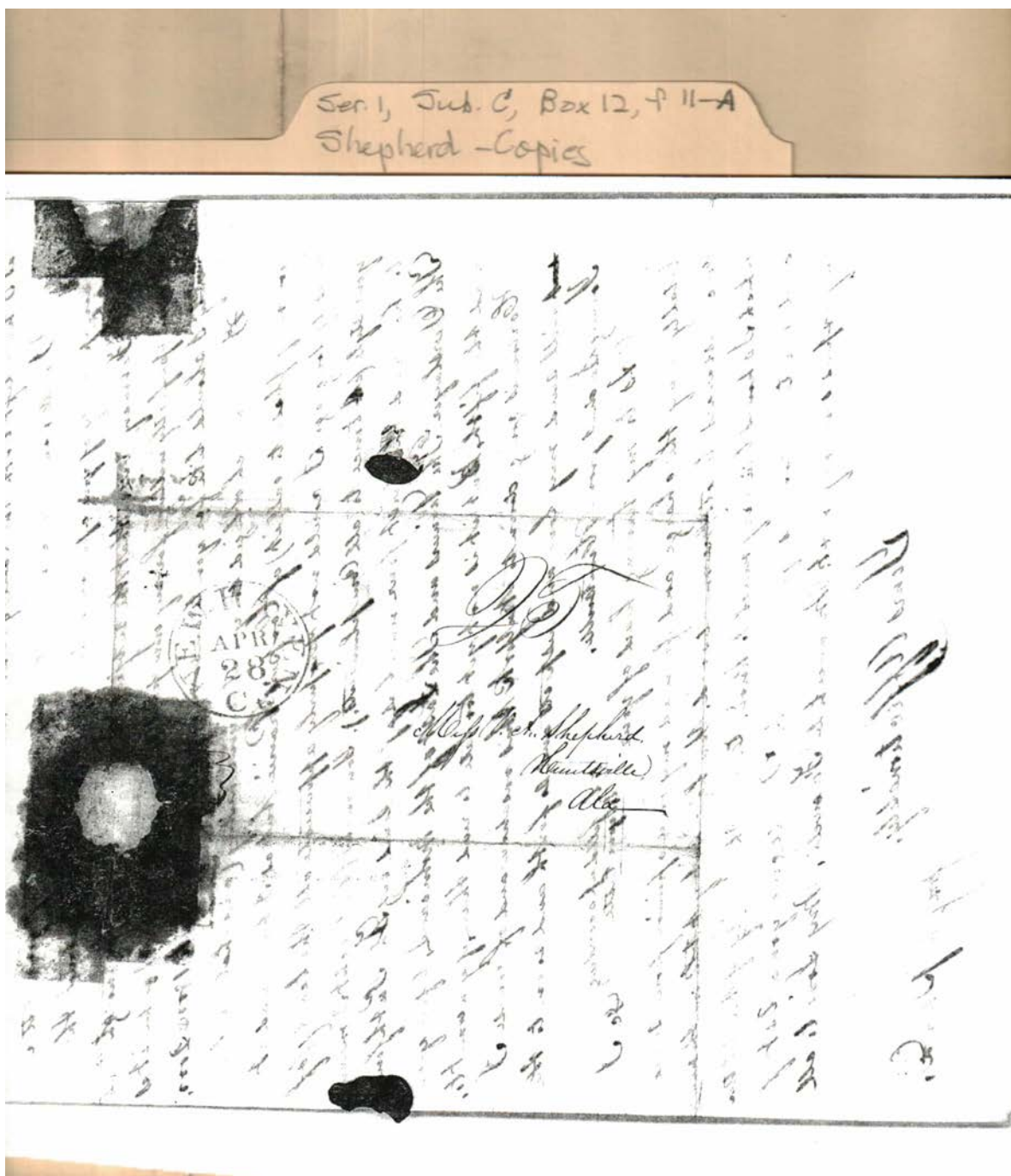


Frances Cabaniss Roberts Collection: Series 1, Subseries C, Box 12, Folder 11 - Item A
Shepherd, John W. to Shepherd, Mrs. Catharine, 1843

Image 1 r01c12-11-a-0001 [Contents](#) [Index](#) [About](#)



Virginia A. Shepherd from J. W. Shepherd

Names:

Shepherd, V. A., Miss

Places:

Huntsville, AL

Types:

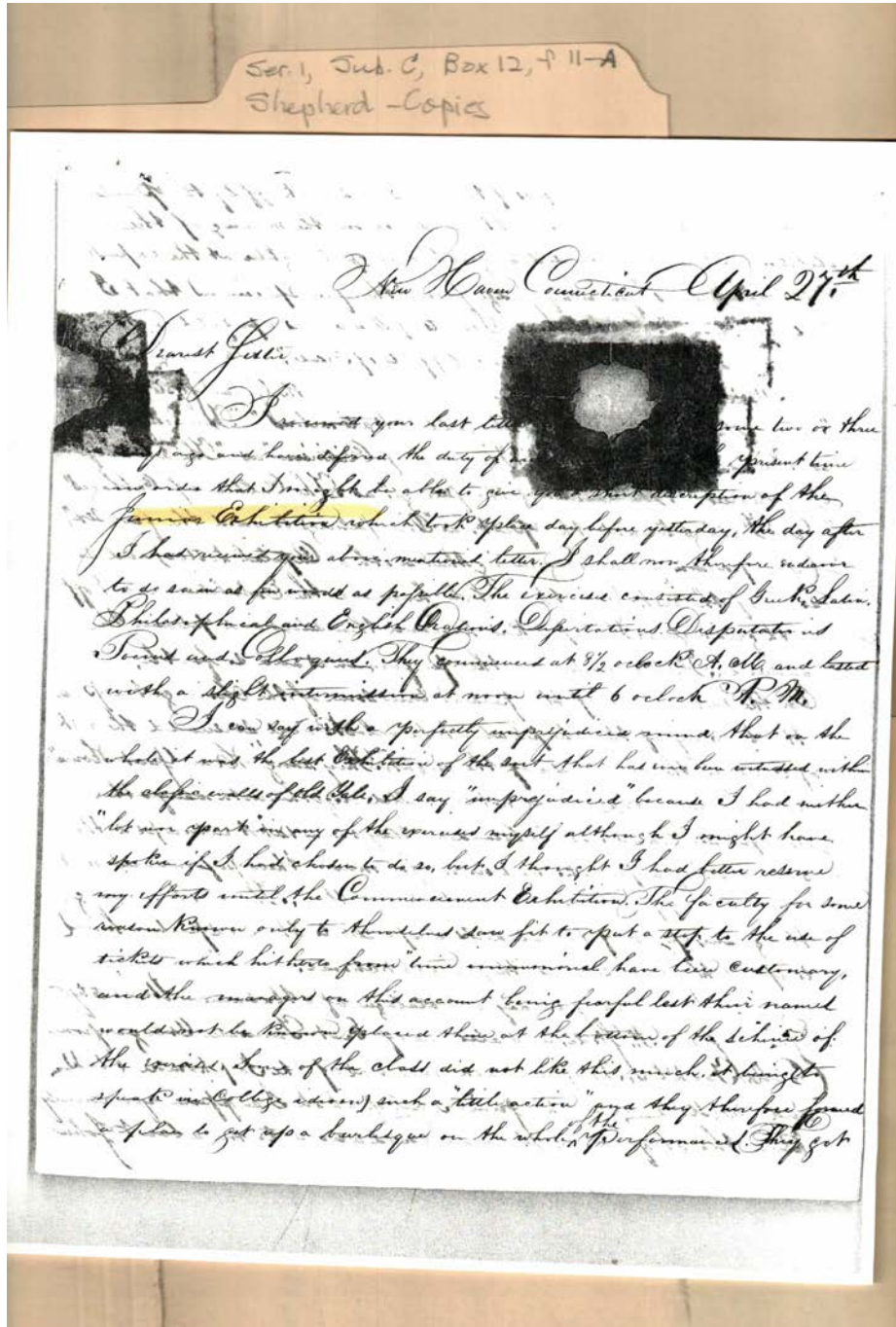
address

Dates:

April 28, 1843

Frances Cabaniss Roberts Collection: Series 1, Subseries C, Box 12, Folder 11 - Item A
Shepherd, John W. to Shepherd, Mrs. Catharine, 1843

Image 2 r01c12-11-a-0002 [Contents](#) [Index](#) [About](#)



Virginia A. Shepherd from J. W. Shepherd

Names:

Junior Exhibition at
Yale

Shepherd, Virginia A.
(sister)

Places:

Yale College, New
Haven, CT

Types:

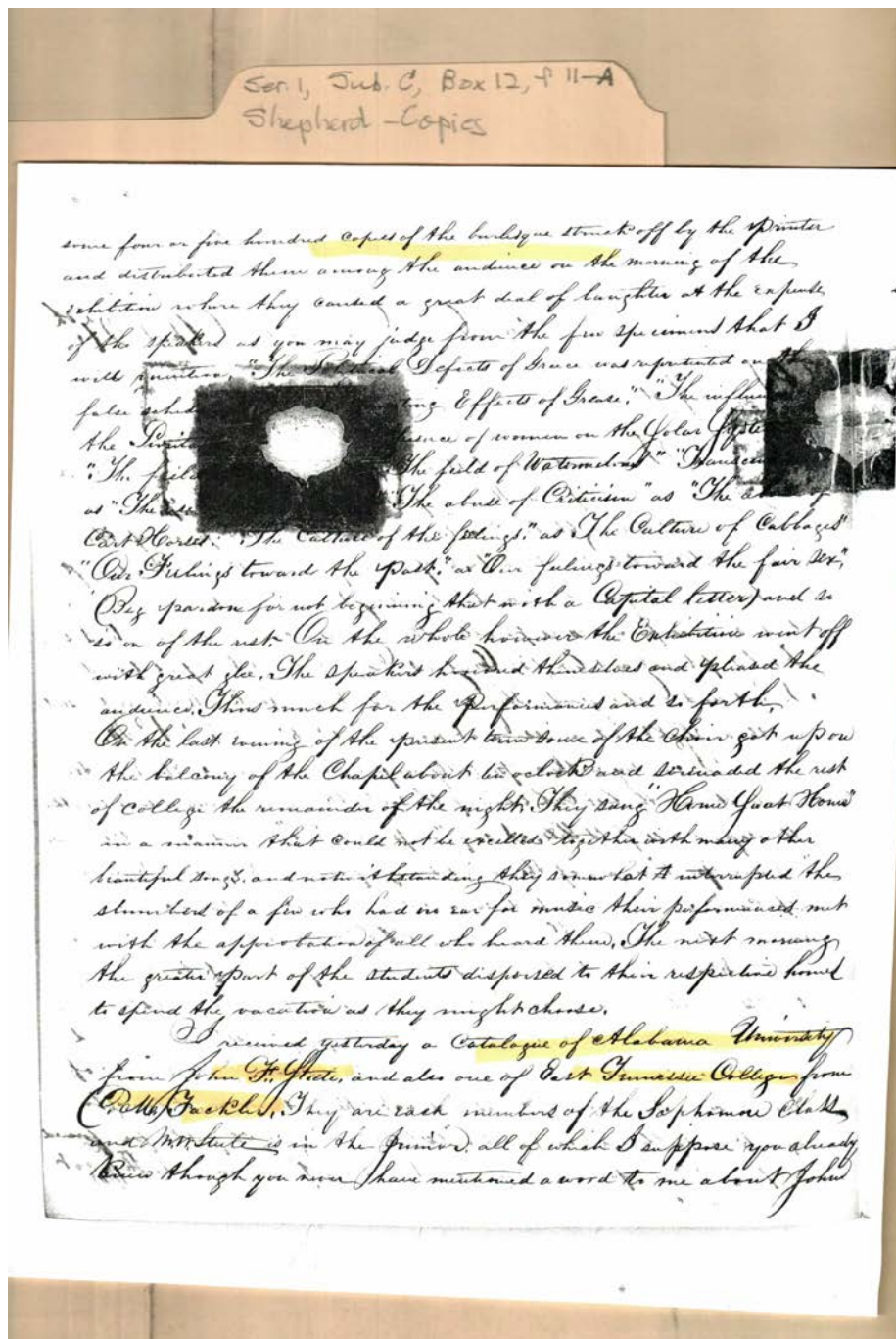
letter

Dates:

April 27, 1843

Frances Cabaniss Roberts Collection: Series 1, Subseries C, Box 12, Folder 11 - Item A
 Shepherd, John W. to Shepherd, Mrs. Catharine, 1843

Image 3 r01c12-11-a-0003 [Contents](#) [Index](#) [About](#)



Virginia A. Shepherd from J. W. Shepherd

Names:

Fackler, C. M.

Junior Exhibition at
 Yale

Steele, John F.

Places:

Yale College, New
 Haven, CT

Types:

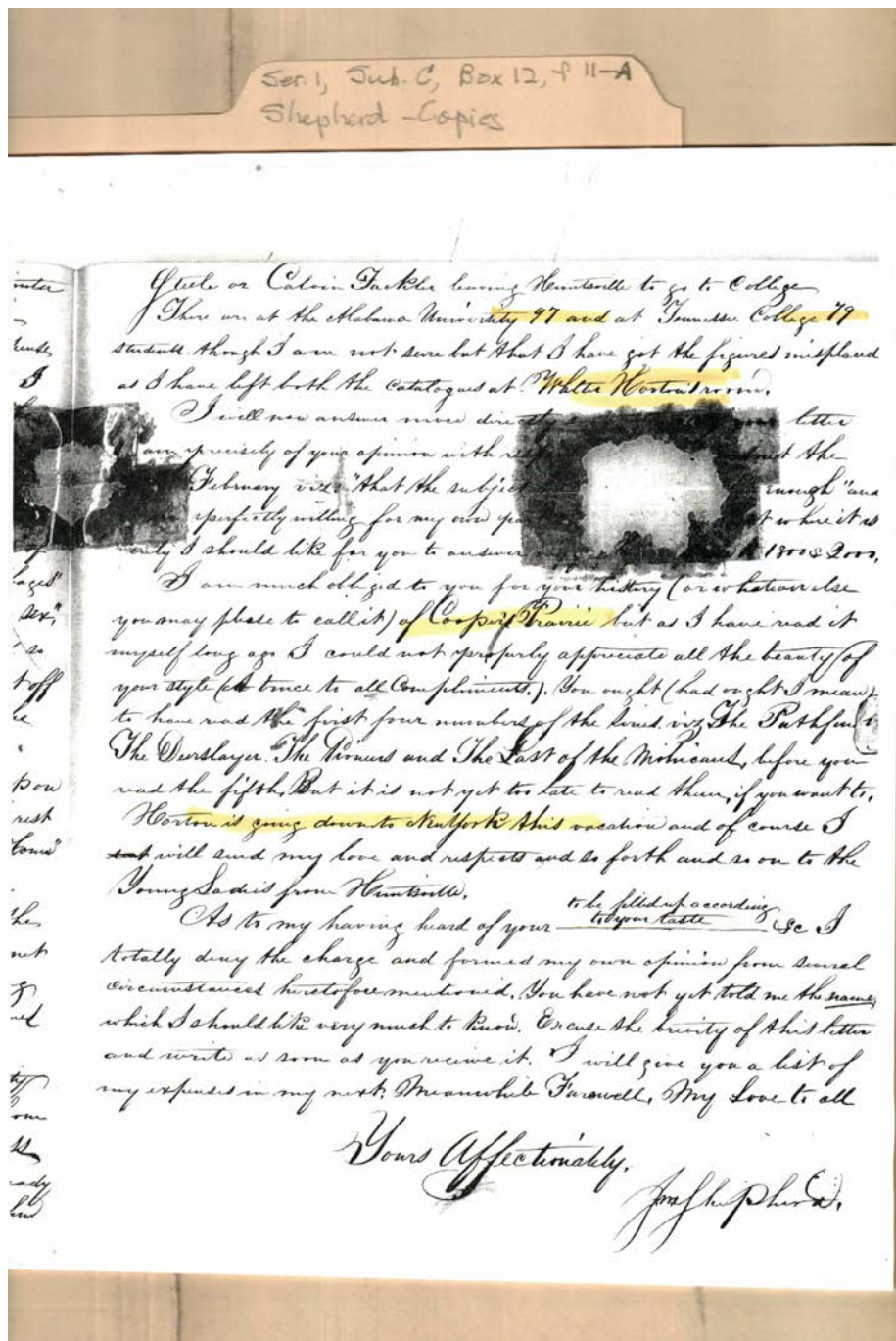
letter

Dates:

April 27, 1843

Frances Cabaniss Roberts Collection: Series 1, Subseries C, Box 12, Folder 11 - Item A
 Shepherd, John W. to Shepherd, Mrs. Catharine, 1843

Image 4 r01c12-11-a-0004 [Contents](#) [Index](#) [About](#)



Virginia A. Shepherd from J. W. Shepherd

Names:

Fackler, Calvin

Horton, Walter

Shepherd, John

Steele, John

Places:

Yale College, New
 Haven, CT

Types:

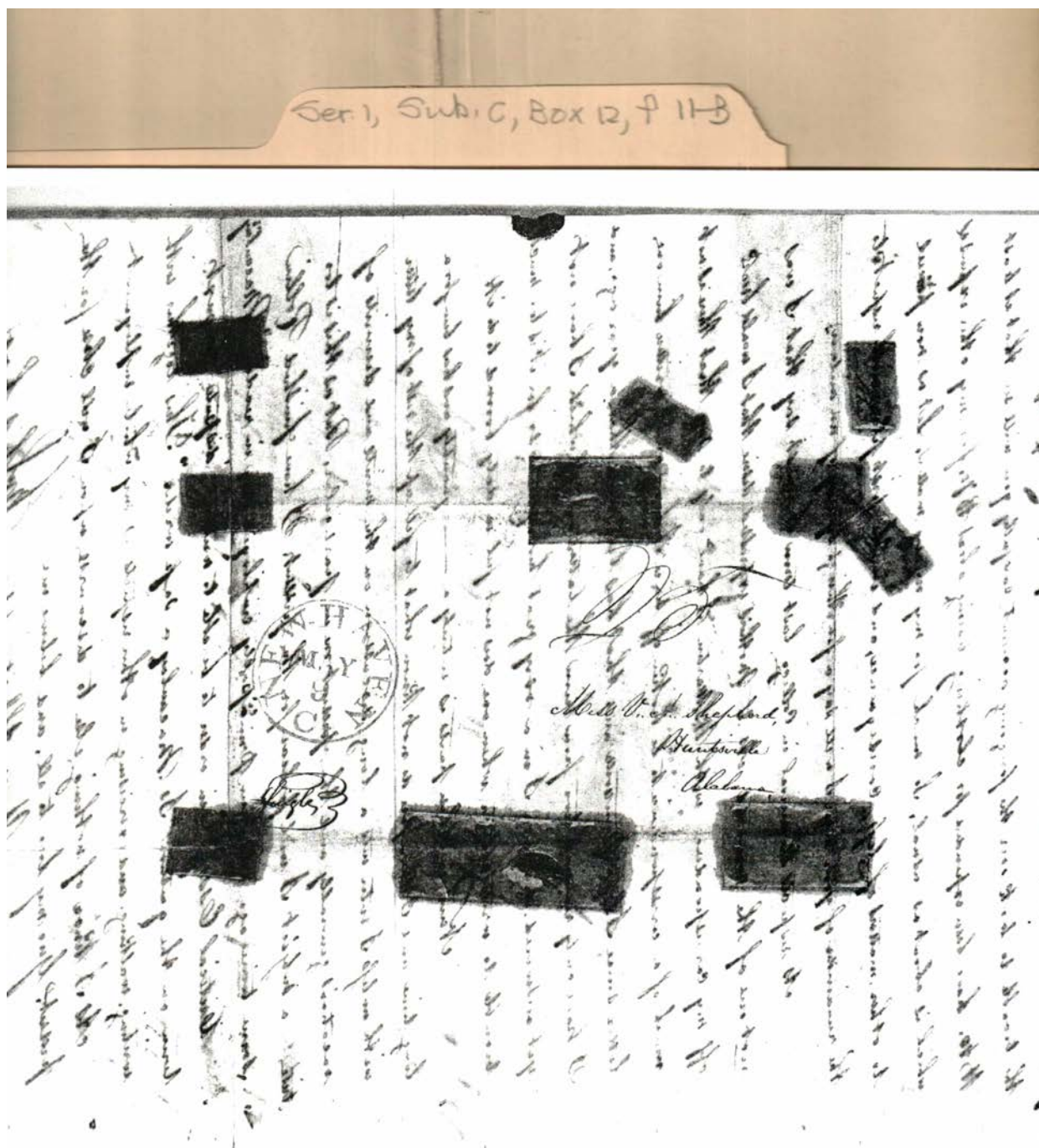
letter

Dates:

April 27, 1843

Frances Cabaniss Roberts Collection: Series 1, Subseries C, Box 12, Folder 11 - Item B
Shepherd, John W. to Shepherd, Mrs. Catharine, 1843

Image 5 r01c12-11-b-0005 [Contents](#) [Index](#) [About](#)



Virginia A. Shepherd from J. W. Shepherd

Names:

Shepherd, V. A., Miss

Places:

Huntsville, AL

Types:

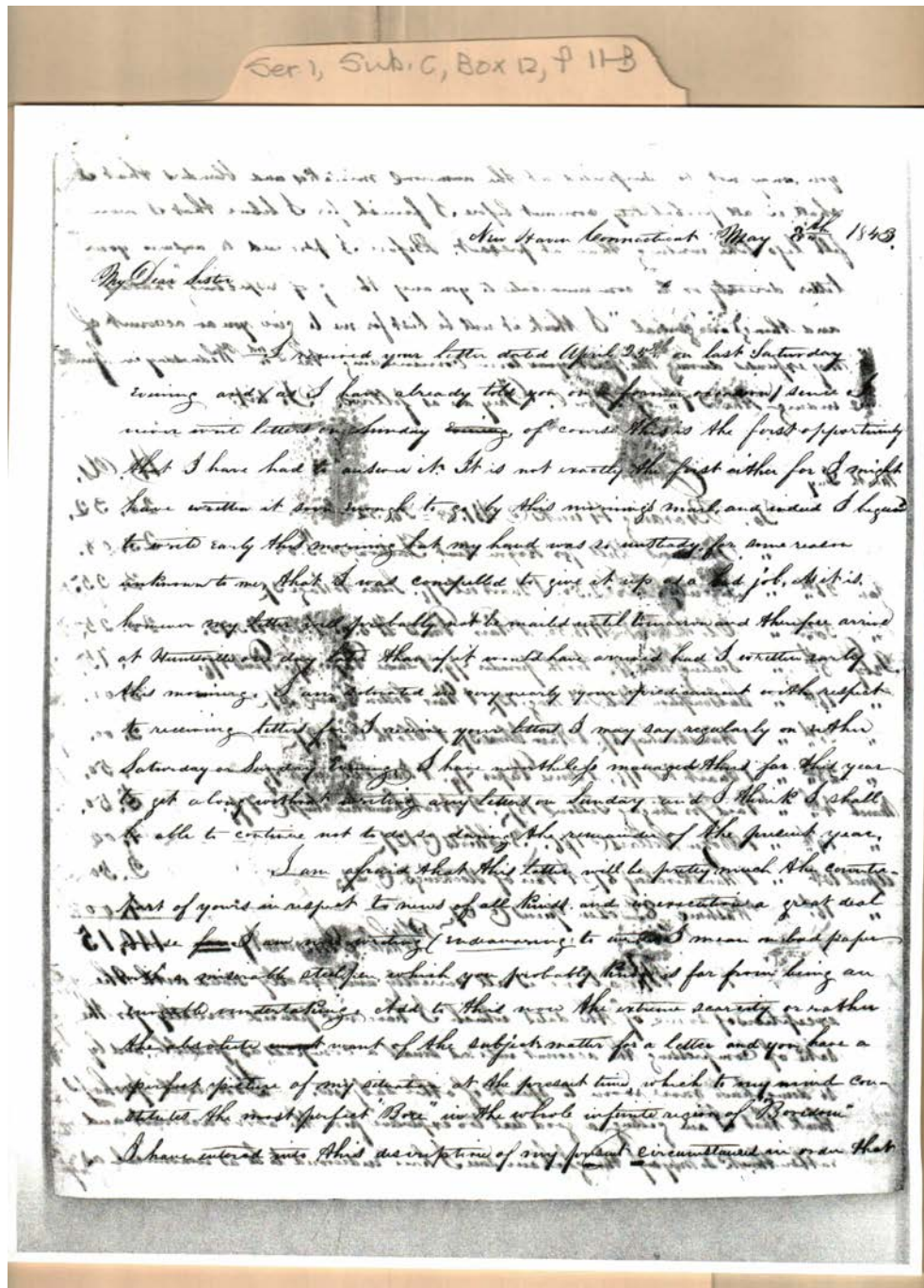
address

Dates:

May 9, 1843

Frances Cabaniss Roberts Collection: Series 1, Subseries C, Box 12, Folder 11 - Item B
Shepherd, John W. to Shepherd, Mrs. Catharine, 1843

Image 6 r01c12-11-b-0006 [Contents](#) [Index](#) [About](#)



Virginia A. Shepherd from J. W. Shepherd

Names:

Shepherd, Virginia A.
(sister)

Places:

Yale College, New
Haven, CT

Types:

letter

Dates:

May 9, 1843

Ser. 1, Sub. C, Box 12, p 11-B

you may not be surprised at the numerous mistakes and blunders that I shall in all probability commit before I finish for I believe that I now feel like writing them at present. Before I proceed to answer your letter directly or to communicate to you any thing of respecting matters and things in general "I think it will be best for me to give you an account of my expenses during the past year term in Commissioning the 5th Regiment in Jan. & ending the 5th of April. They are as follows. Dr. Wife.

March 1894		Dr.	Cr.
	Boarding 4 weeks @ \$1.00 =	4.00	
	" Chamber Bill for room and board 30 B. 00		23.00
Jan 26th	" Laundry Jan 2.35. 1 Pair of Socks 1/2. 1 Pair of Socks 1/2.		3.25
" 30th	" Oil & kerosene 11.00. 1 Pair of Socks 1/2. 1 Pair of Socks 1/2.		26.25
" 31st	" Laundry 11.00. 1 Pair of Socks 1/2. 1 Pair of Socks 1/2.		11.00
" 1st	" Laundry 11.00. 1 Pair of Socks 1/2. 1 Pair of Socks 1/2.		3.00
" 2nd	" 1 Pair of Socks 1/2. 1 Pair of Socks 1/2.		3.00
" 3rd	" 1 Pair of Socks 1/2. 1 Pair of Socks 1/2.		3.50
March 4th	" Paid for laundry 11.00. 1 Pair of Socks 1/2. 1 Pair of Socks 1/2.		8.50
" 14th	" 1 Pair of Socks 1/2. 1 Pair of Socks 1/2.		9.00
April 10th	" 1 Pair of Socks 1/2. 1 Pair of Socks 1/2.		2.50
" 16th	" 1 Pair of Socks 1/2. 1 Pair of Socks 1/2.		4.00
	Total		146.15

The above is all correctly and exactly stated with the
 exception of some of the dates which I have not placed correctly for the
 sake of compressing the account into as small a compass as possible, and by
 so doing have more room to speak of other matters. You will perhaps
 think that I am getting a good deal too expensive from the above account and
 rather thank to myself than to any one else I have endeavored to be as economical as

Virginia A. Shepherd from J. W. Shepherd

Names:

Expenses at Yale

Places:

Yale College, New
Haven, CT

Types:

letter

Dates:

May 9, 1843

Frances Cabaniss Roberts Collection: Series 1, Subseries C, Box 12, Folder 11 - Item B
Shepherd, John W. to Shepherd, Mrs. Catharine, 1843

Image 8 r01c12-11-b-0008 [Contents](#) [Index](#) [About](#)

Ser 1, Sub C, Box 12, F 11-B

possible. What principally hinders makes my expenses so much larger than usual
is the clothes that I was obliged to buy as all the winter clothes that I brought
from home were either worn out or else entirely too small. If you will take
the trouble to look over the foregoing account carefully you will see that at least
\$100. have been expended for clothing leaving about \$70. for my other expenses
which is about as usual, so much for my money matters, I am now pressed
to other matters of less consequence, and so the first part of my letter to
the remainder of your letter I will say a few things by way of an answer.
As respects the removal in College last term I must say that I was
not one of the removed. As to Mother's expressed desire that I should break
off my correspondence with Mr. Martin I have only to say that there is not
much of a correspondence to be broken off since I have not written him one
letter since I left Cambridge and that has been more than a year ago, and
I have only received two from him the latter of which I have not
yet answered. I am in a very great hurry so for it is too much
trouble to write a letter when one does not feel in duty bound to do it.
Kindness in these parts is entirely a — quantity and has been for a
long time and I therefore do not know what to fill up the rest of my letter
with unless I enter into a long discussion on the merits and demerits of
several generally and the present one in particular. But as this is too
trifling a subject I will speak for the present. I have finished Rollin
some time ago. I am principally employed now in reading Macaulay's
Critical Essays in order to be able to write a dissertation on the
question Is Macaulay a safe writer? This together with
writing, walking and exercising in other respects is my whole employment.
As I know of nothing else to discourse upon I will close for the
present. Give my love to all, and believe me
Yours Affectionately J. W. Shepherd

Virginia A. Shepherd from J. W. Shepherd

Names:

Martin, W. S.

Shepherd, John

Places:

Yale College, New
Haven, CT

Types:

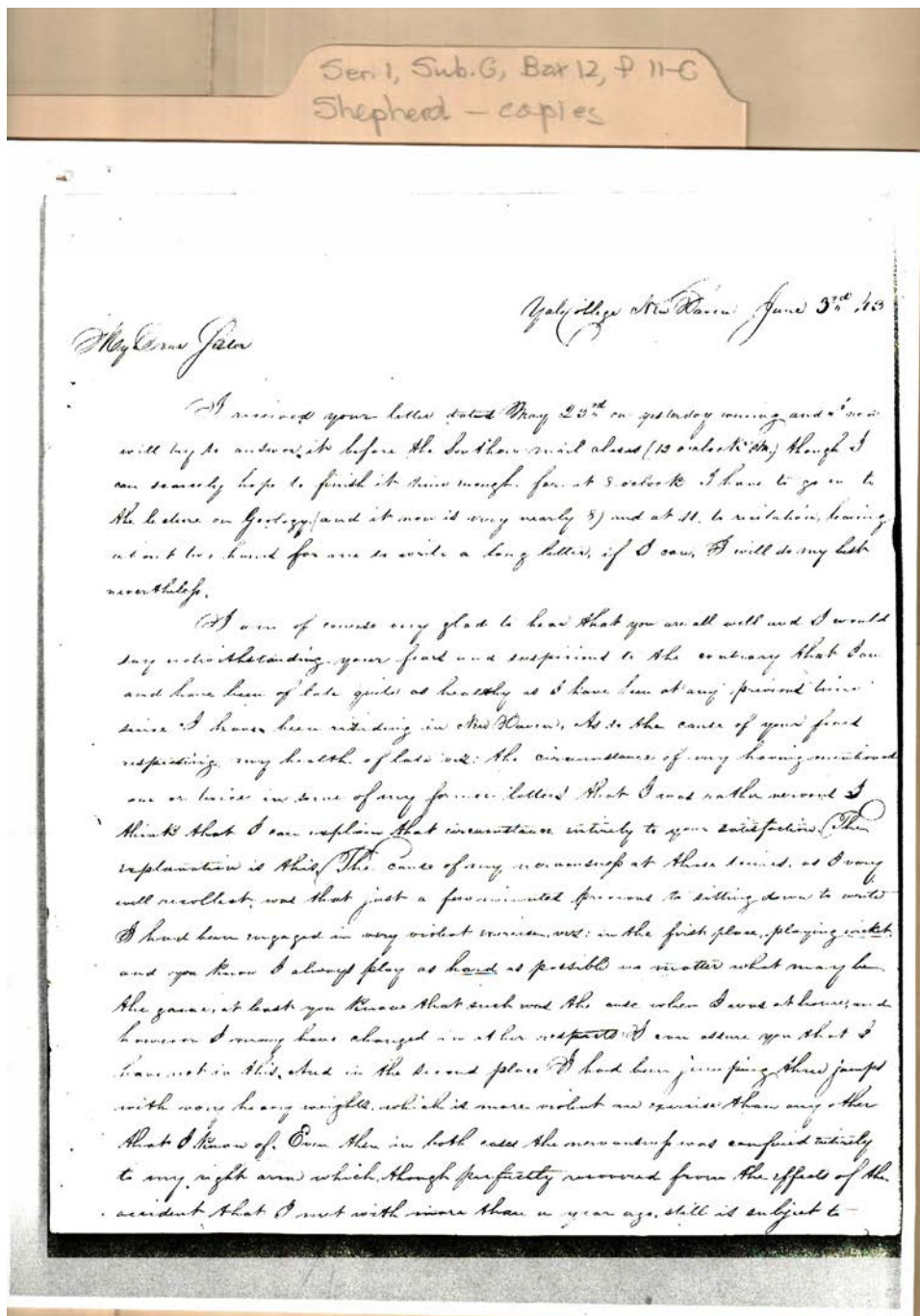
letter

Dates:

May 9, 1843

Frances Cabaniss Roberts Collection: Series 1, Subseries C, Box 12, Folder 11 - Item C
Shepherd, John W. to Shepherd, Mrs. Catharine, 1843

Image 9 r01c12-11-c-0009 [Contents](#) [Index](#) [About](#)



Virginia A. Shepherd from J. W. Shepherd

Names:

Shepherd, Virginia A.
(sister)

Places:

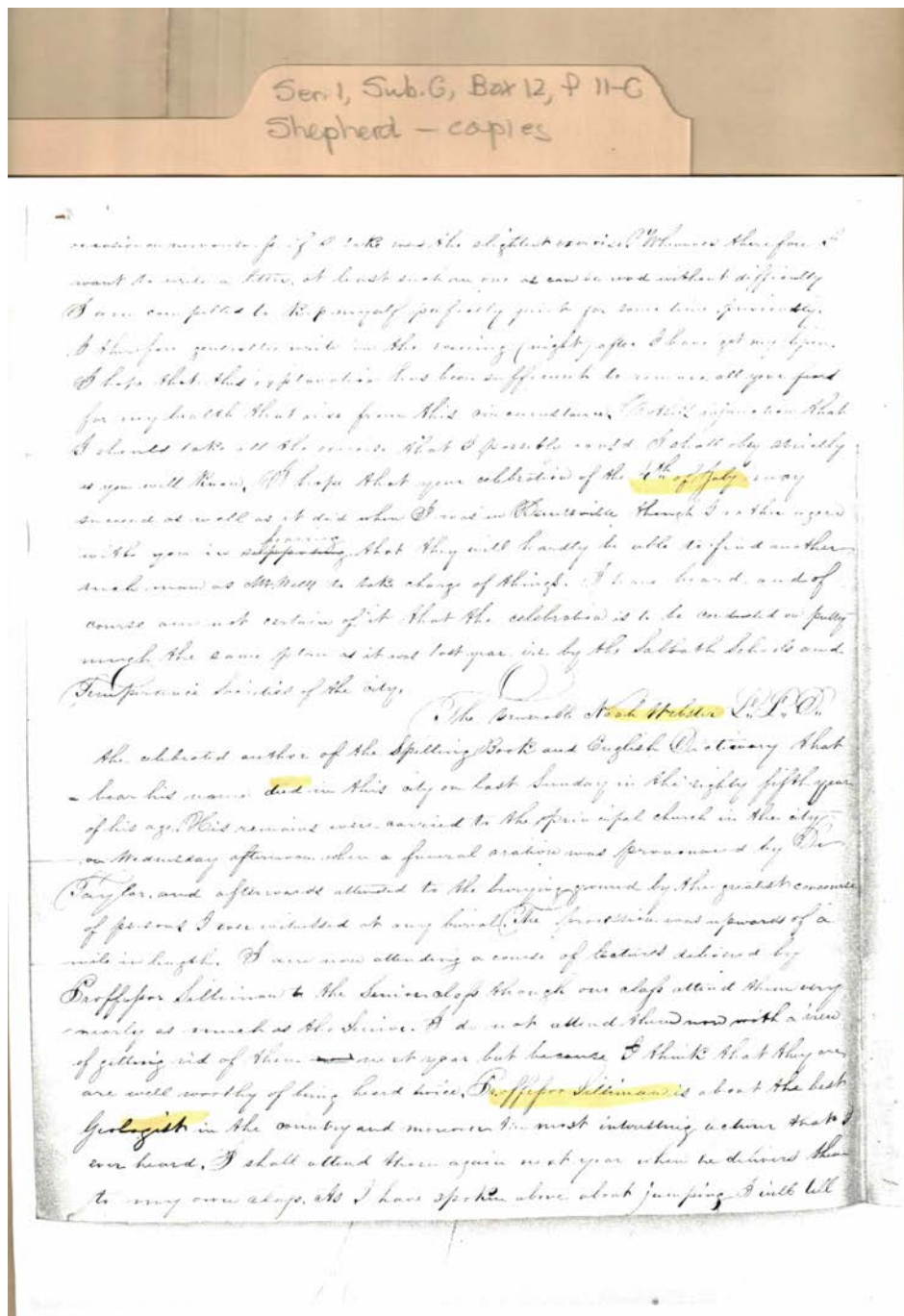
Yale College, New
Haven, CT

Types:

letter

Dates:

June 3, 1843



Virginia A. Shepherd from J. W. Shepherd

Names:

Silliman, Prof.

Taylor, Dr.

Webster, Noah

Places:

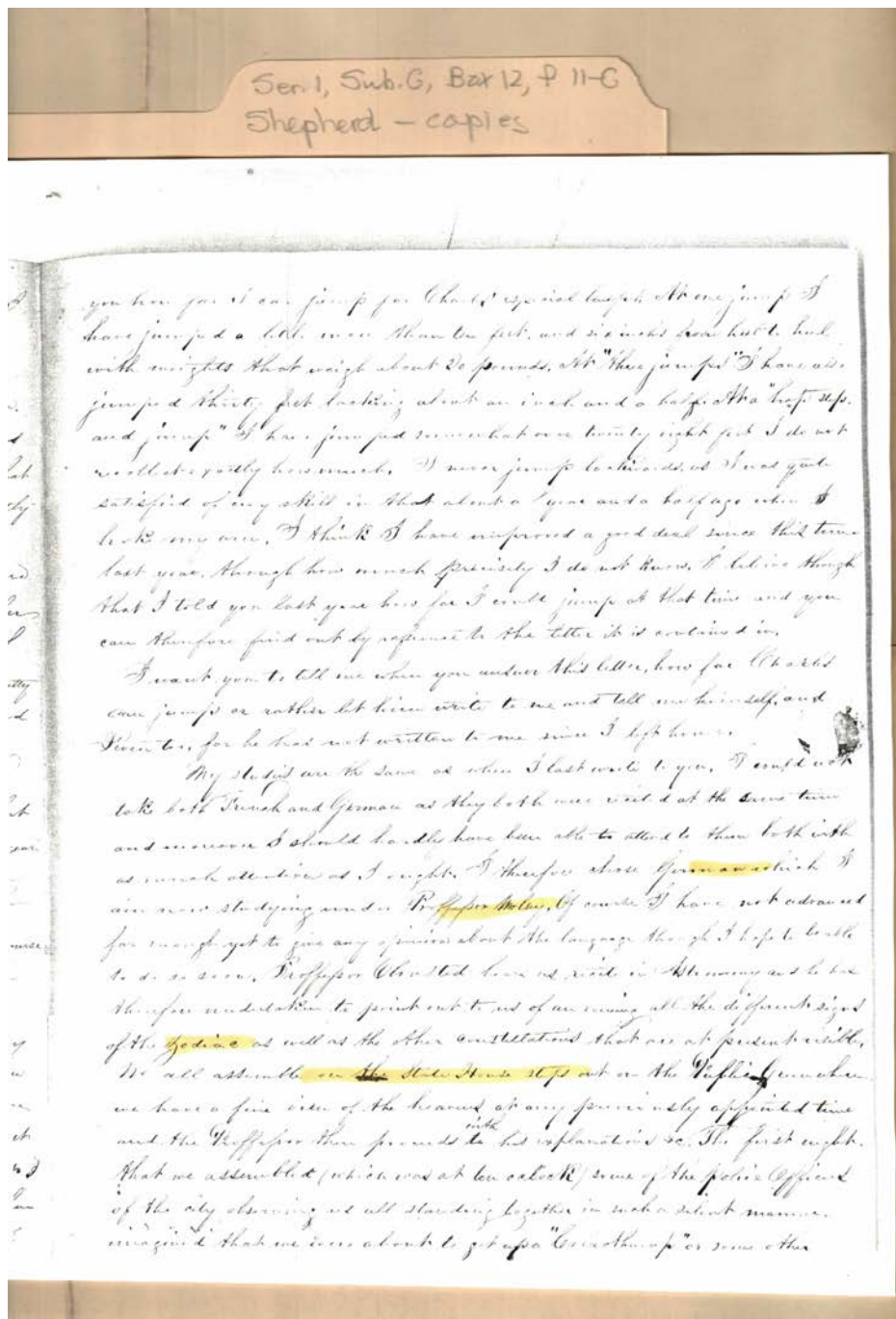
Yale College, New
 Haven, CT

Types:

letter

Dates:

June 3, 1843



Virginia A. Shepherd from J. W. Shepherd

Names:

Olmsted, Prof.

Shepherd, Charles

Woolsey, Prof.

Places:

Yale College, New
 Haven, CT

Types:

letter

Dates:

June 3, 1843

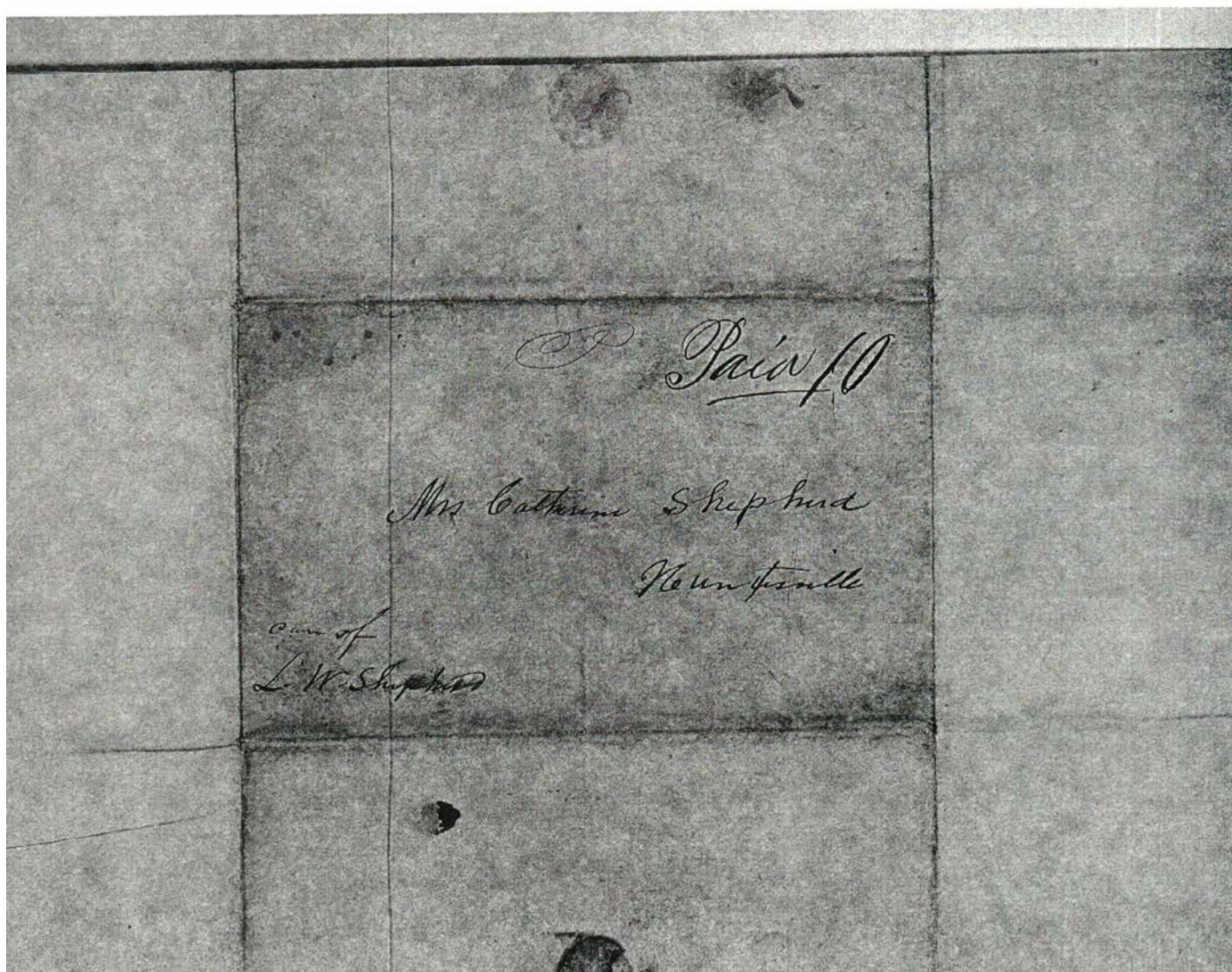
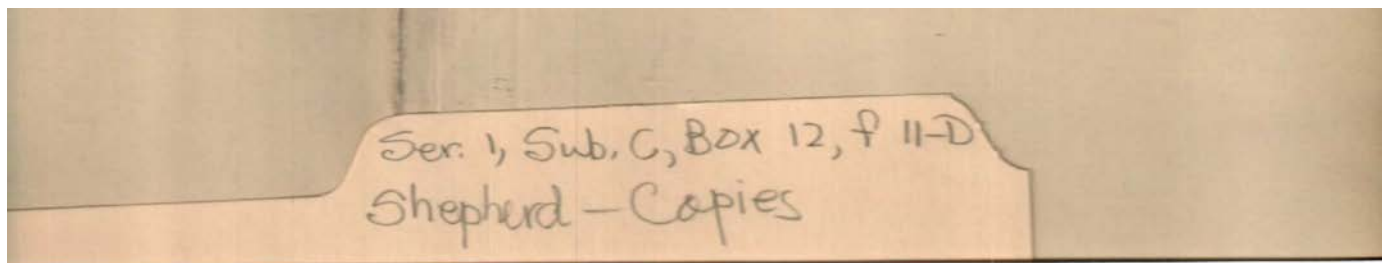
Image 12 r01c12-11-c-0012 [Contents](#) [Index](#) [About](#)

Virginia A. Shepherd from J. W. Shepherd	
Names:	
Shepherd, John	Shepherd, V. A., Miss
Places:	
Huntsville, AL	Yale College, New Haven, CT
Types:	
address	letter
Dates:	
Jine 3, 1843	

Frances Cabaniss Roberts Collection: Series 1, Subseries C, Box 12, Folder 11 - Item D

Shepherd, John W. to Shepherd, Mrs. Catharine, 1843

Image 13 r01c12-11-d-0013 [Contents](#) [Index](#) [About](#)



Catharine Shepherd from Virginia Shepherd

Names:

Shepherd, Catharine

Shepherd, L. W.

Places:

Huntsville, AL

Types:

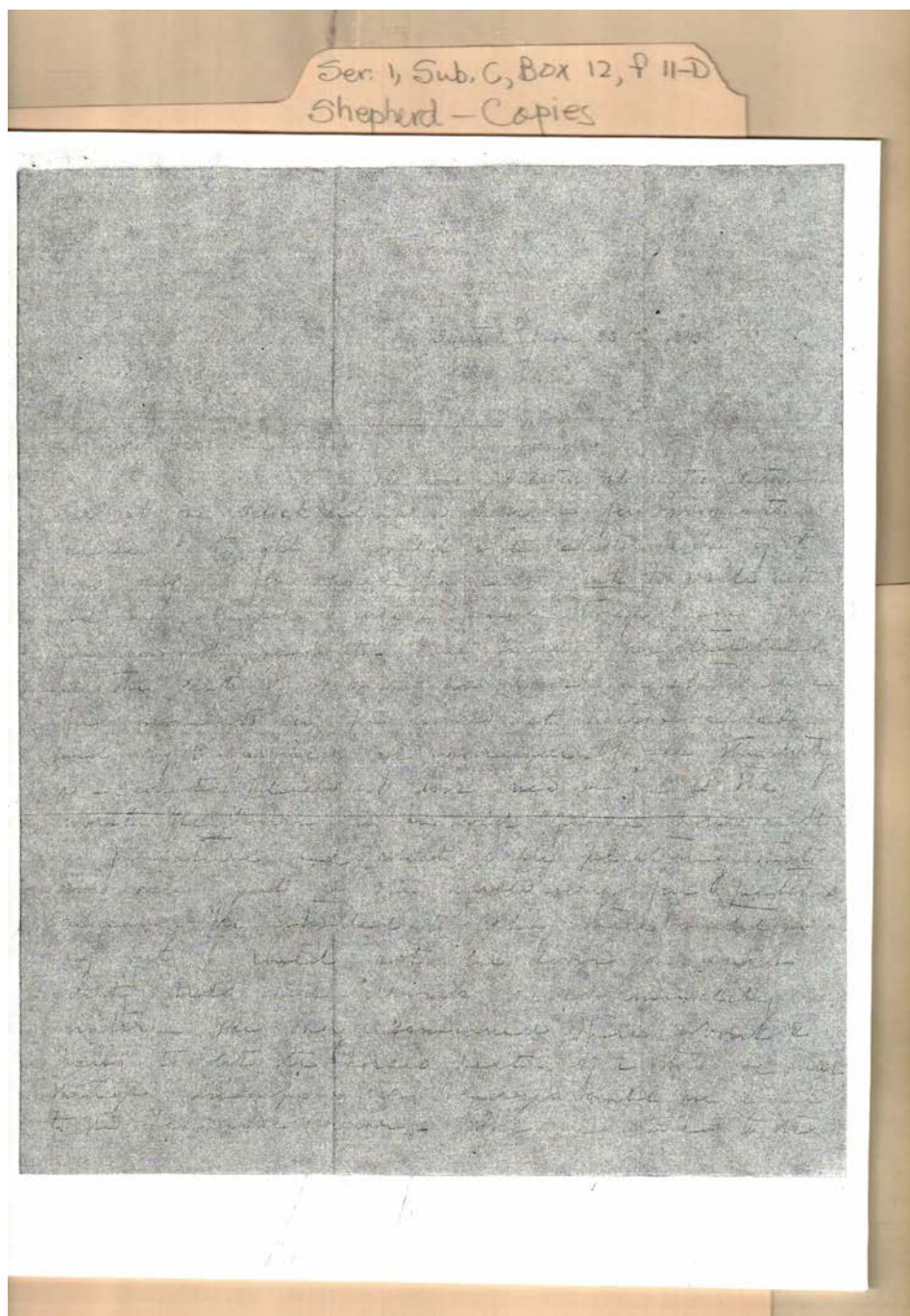
address

Dates:

June 1843

Frances Cabaniss Roberts Collection: Series 1, Subseries C, Box 12, Folder 11 - Item D
Shepherd, John W. to Shepherd, Mrs. Catharine, 1843

Image 14 r01c12-11-d-0014 [Contents](#) [Index](#) [About](#)



Catharine Shepherd from Virginia Shepherd

Names:

Shepherd, Catharine
(mother)

Types:

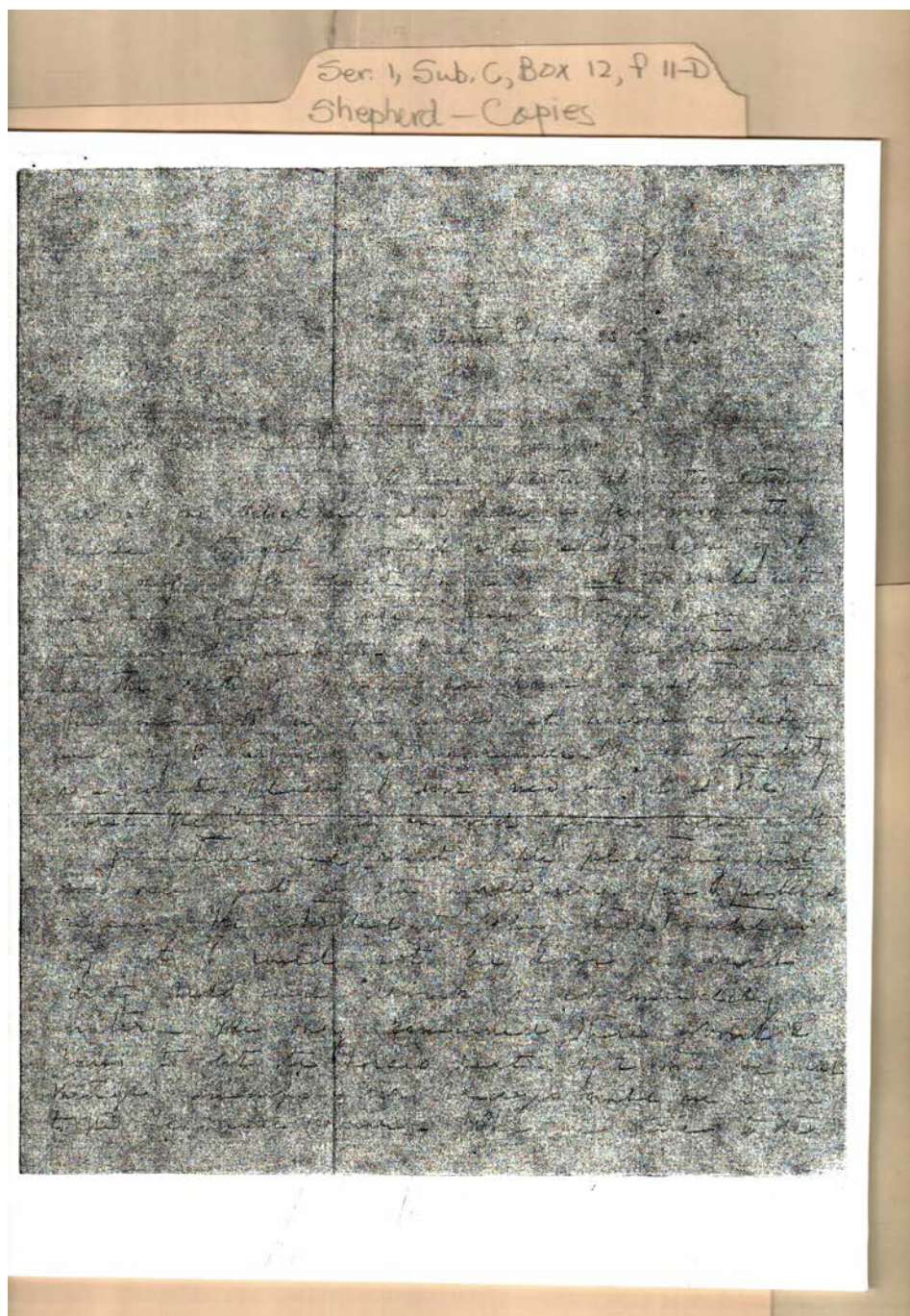
letter

Dates:

June 23, 1843

Frances Cabaniss Roberts Collection: Series 1, Subseries C, Box 12, Folder 11 - Item D
Shepherd, John W. to Shepherd, Mrs. Catharine, 1843

Image 15 r01c12-11-d-0014a [Contents](#) [Index](#) [About](#)



Catharine Shepherd from Virginia Shepherd

Names:

Shepherd, Catharine
(mother)

Types:

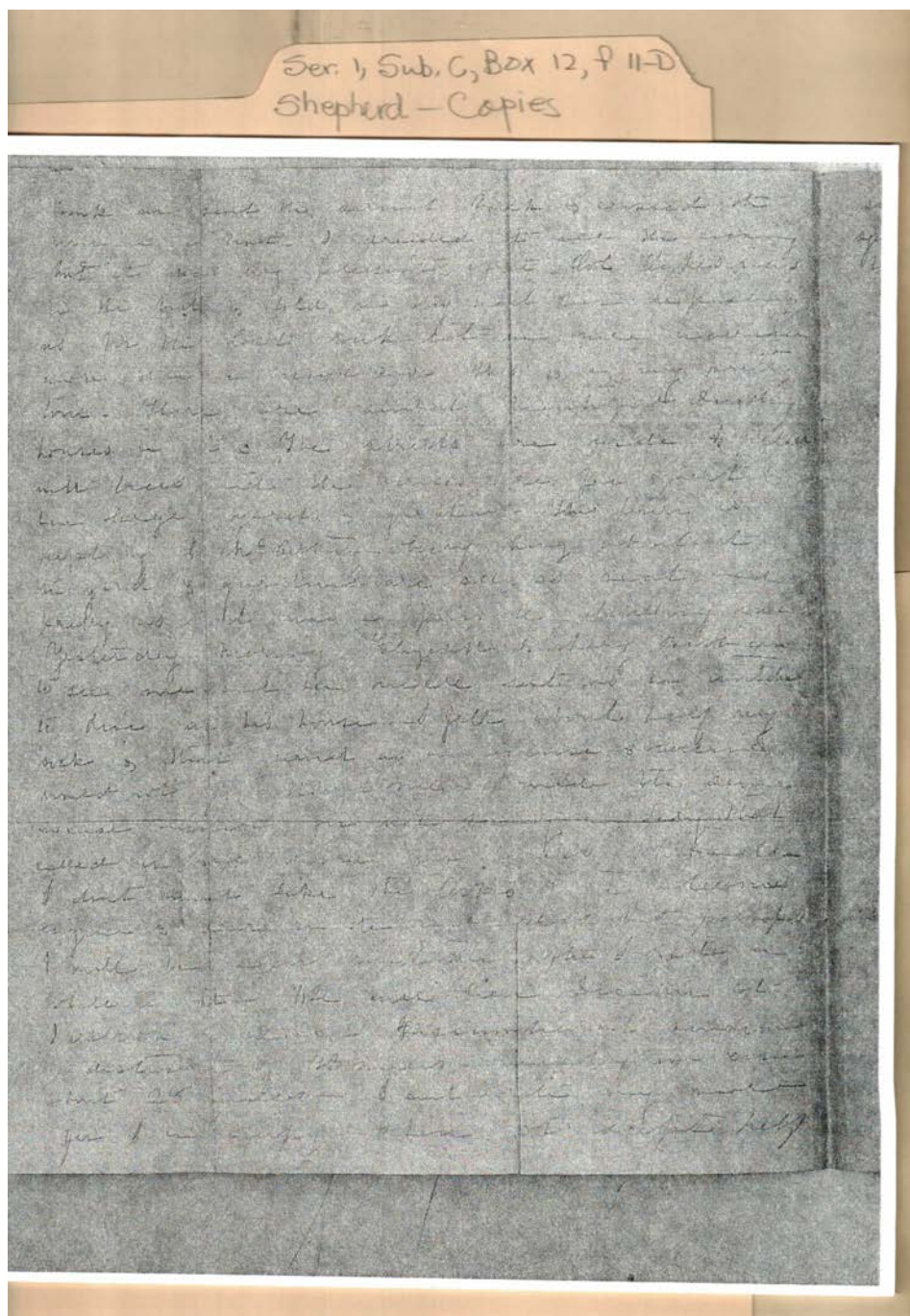
letter

Dates:

June 23, 1843

Frances Cabaniss Roberts Collection: Series 1, Subseries C, Box 12, Folder 11 - Item D
Shepherd, John W. to Shepherd, Mrs. Catharine, 1843

Image 16 r01c12-11-d-0015 [Contents](#) [Index](#) [About](#)



Catharine Shepherd from Virginia Shepherd

Types:

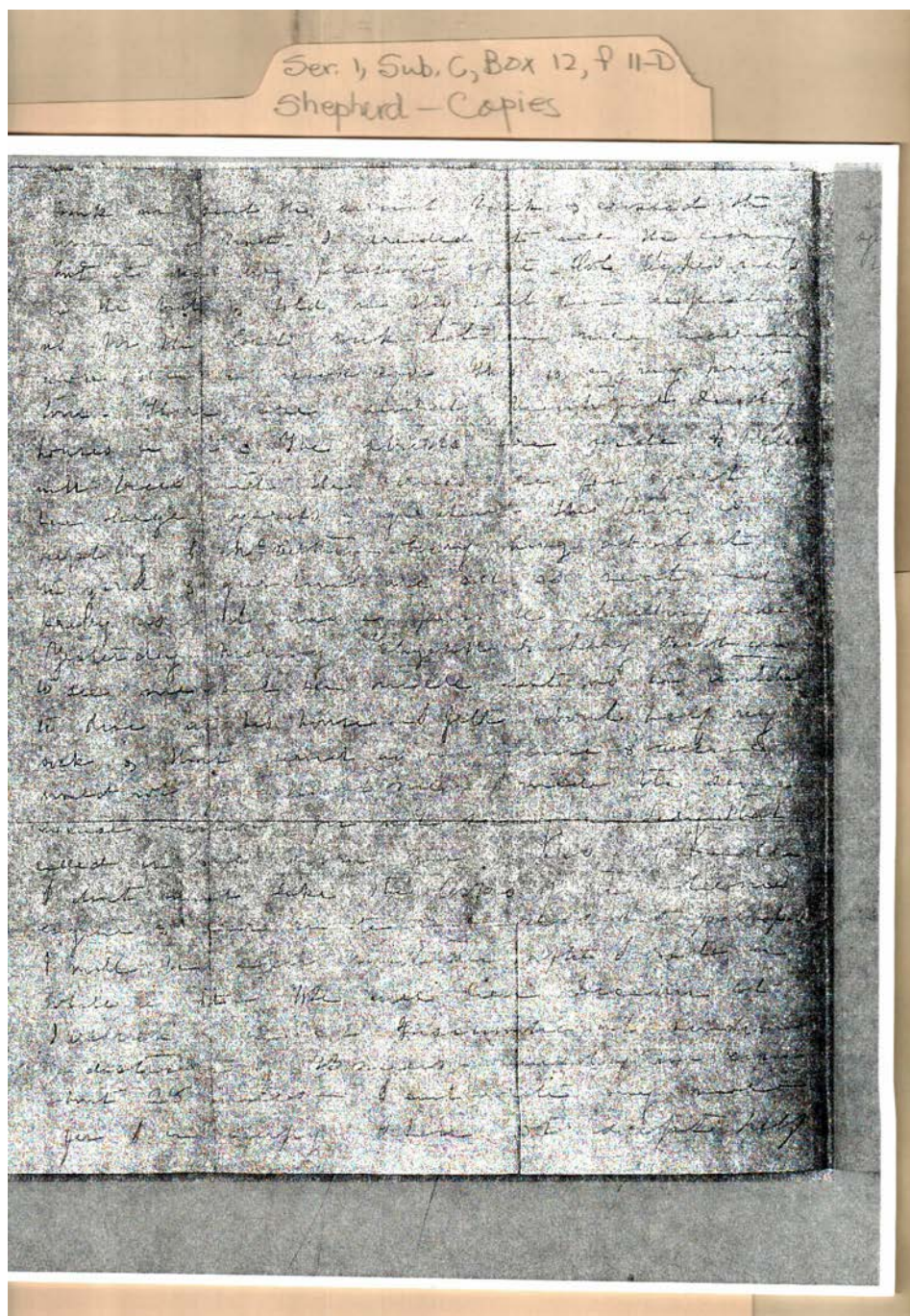
letter

Dates:

June 23, 1843

Frances Cabaniss Roberts Collection: Series 1, Subseries C, Box 12, Folder 11 - Item D
Shepherd, John W. to Shepherd, Mrs. Catharine, 1843

Image 17 r01c12-11-d-0015a [Contents](#) [Index](#) [About](#)



Catharine Shepherd from Virginia Shepherd

Types:

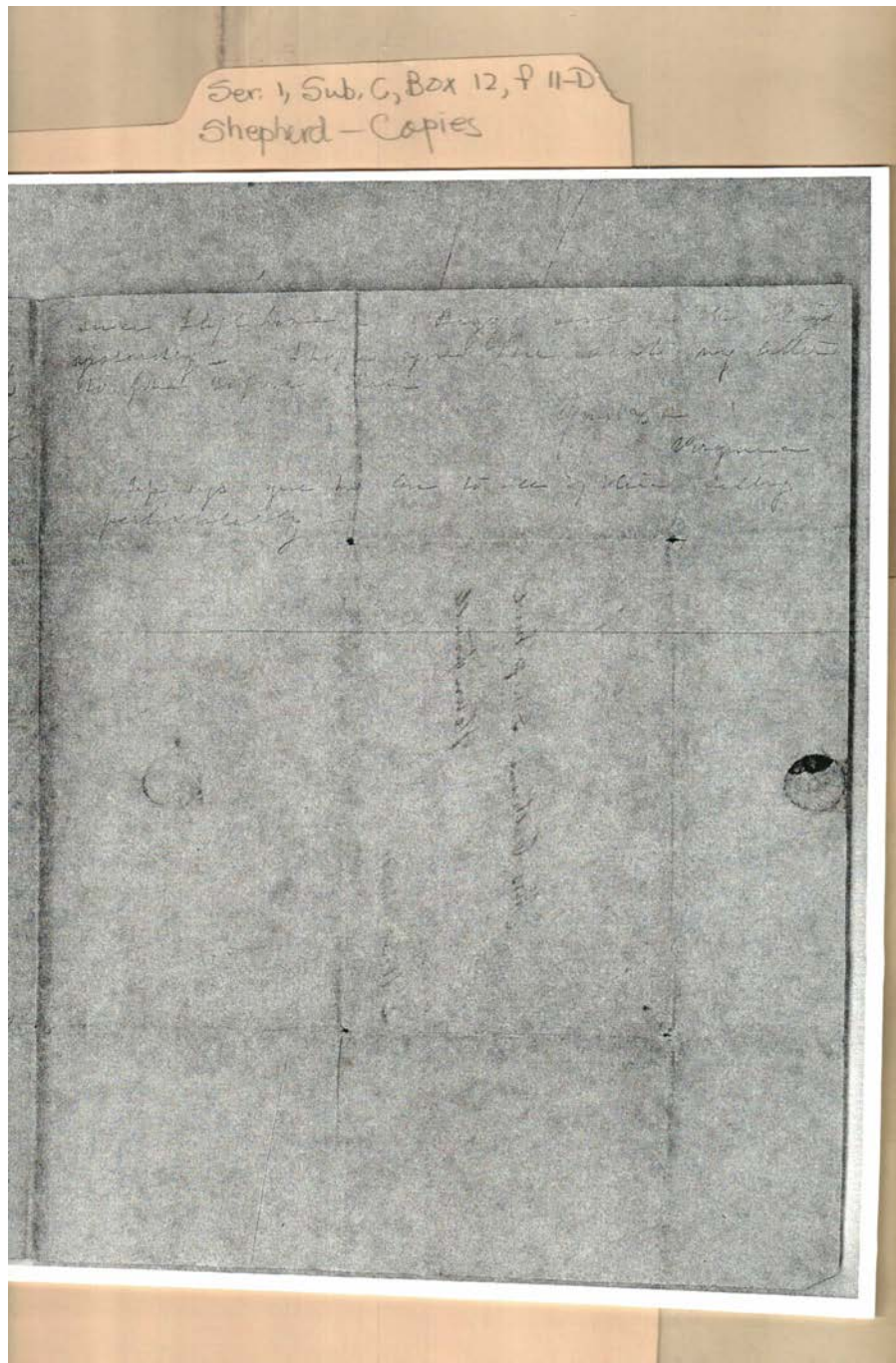
letter

Dates:

June 23, 1843

Frances Cabaniss Roberts Collection: Series 1, Subseries C, Box 12, Folder 11 - Item D
Shepherd, John W. to Shepherd, Mrs. Catharine, 1843

Image 18 r01c12-11-d-0016 [Contents](#) [Index](#) [About](#)



Catharine Shepherd from Virginia Shepherd

Names:

Shepherd, Virginia

Types:

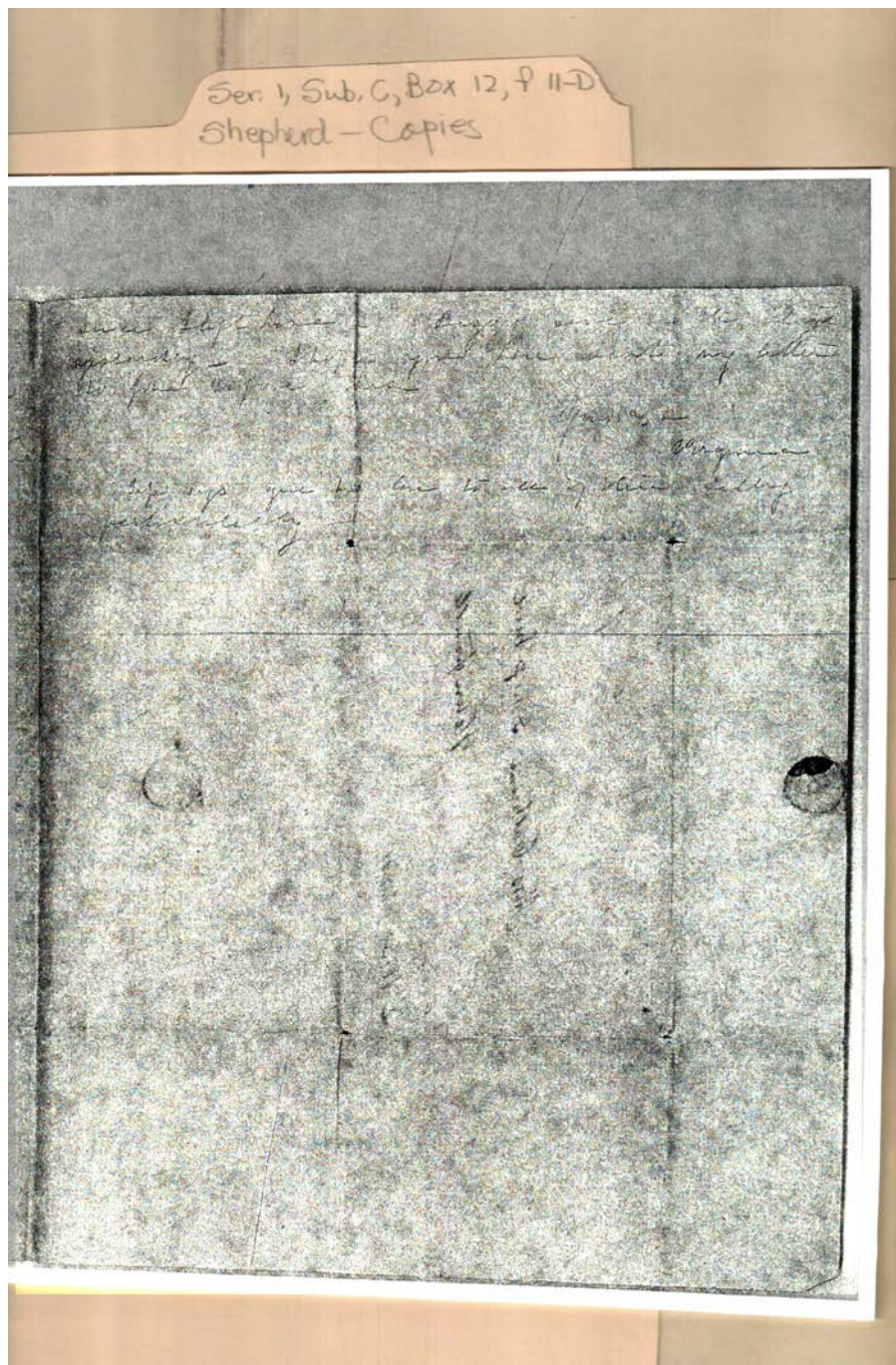
letter

Dates:

June 23, 1843

Frances Cabaniss Roberts Collection: Series 1, Subseries C, Box 12, Folder 11 - Item D
Shepherd, John W. to Shepherd, Mrs. Catharine, 1843

Image 19 r01c12-11-d-0016a [Contents](#) [Index](#) [About](#)



Catharine Shepherd from Virginia Shepherd

Names:

Shepherd, Virginia

Types:

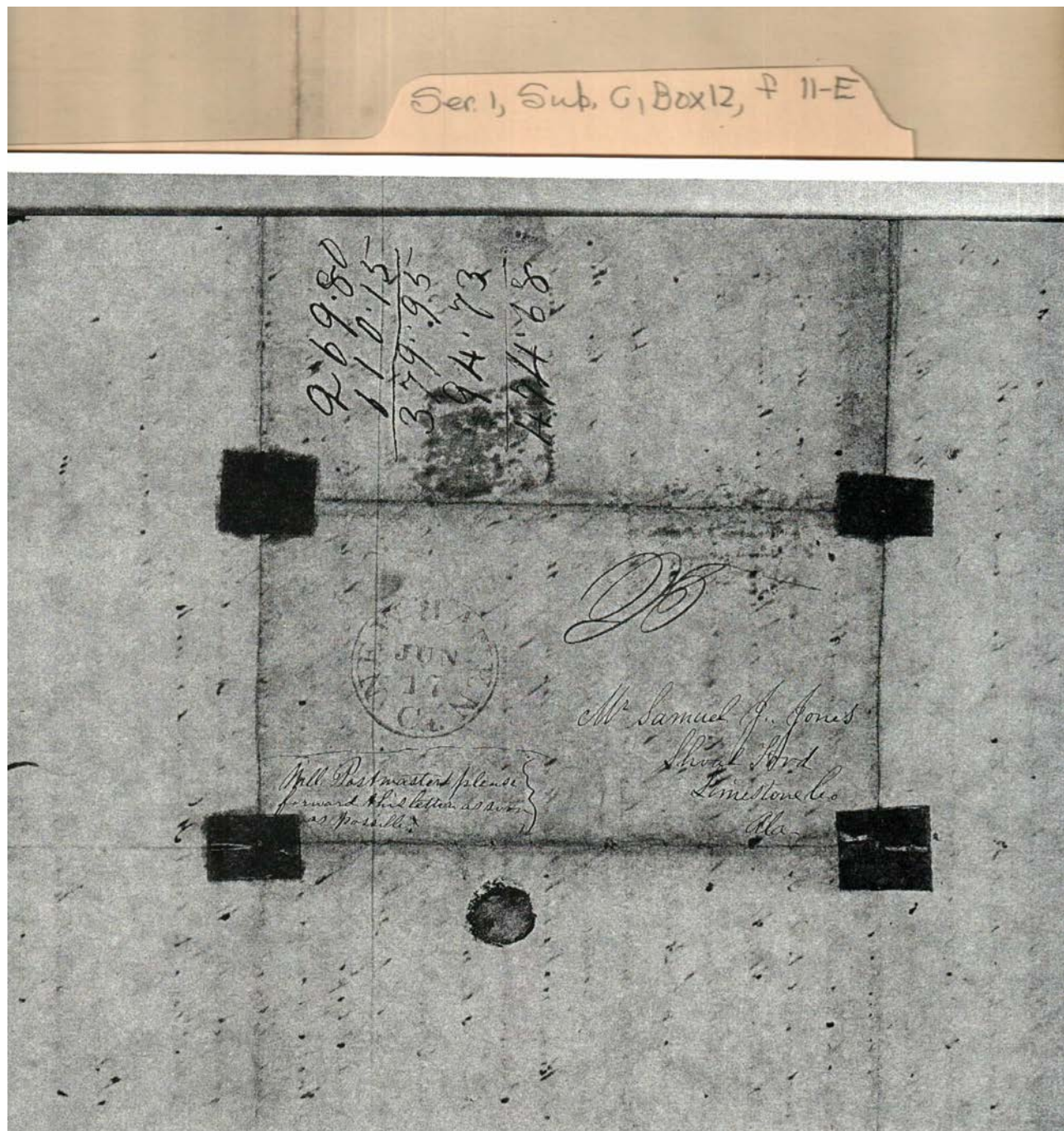
letter

Dates:

June 23, 1843

Frances Cabaniss Roberts Collection: Series 1, Subseries C, Box 12, Folder 11 - Item E
Shepherd, John W. to Shepherd, Mrs. Catharine, 1843

Image 20 r01c12-11-e-0017 [Contents](#) [Index](#) [About](#)



Samuel J. Jones from J. W. Shepherd

Names:

Jones, Samuel J.

Places:

Shoal Ford,
Limestone Co., AL

Types:

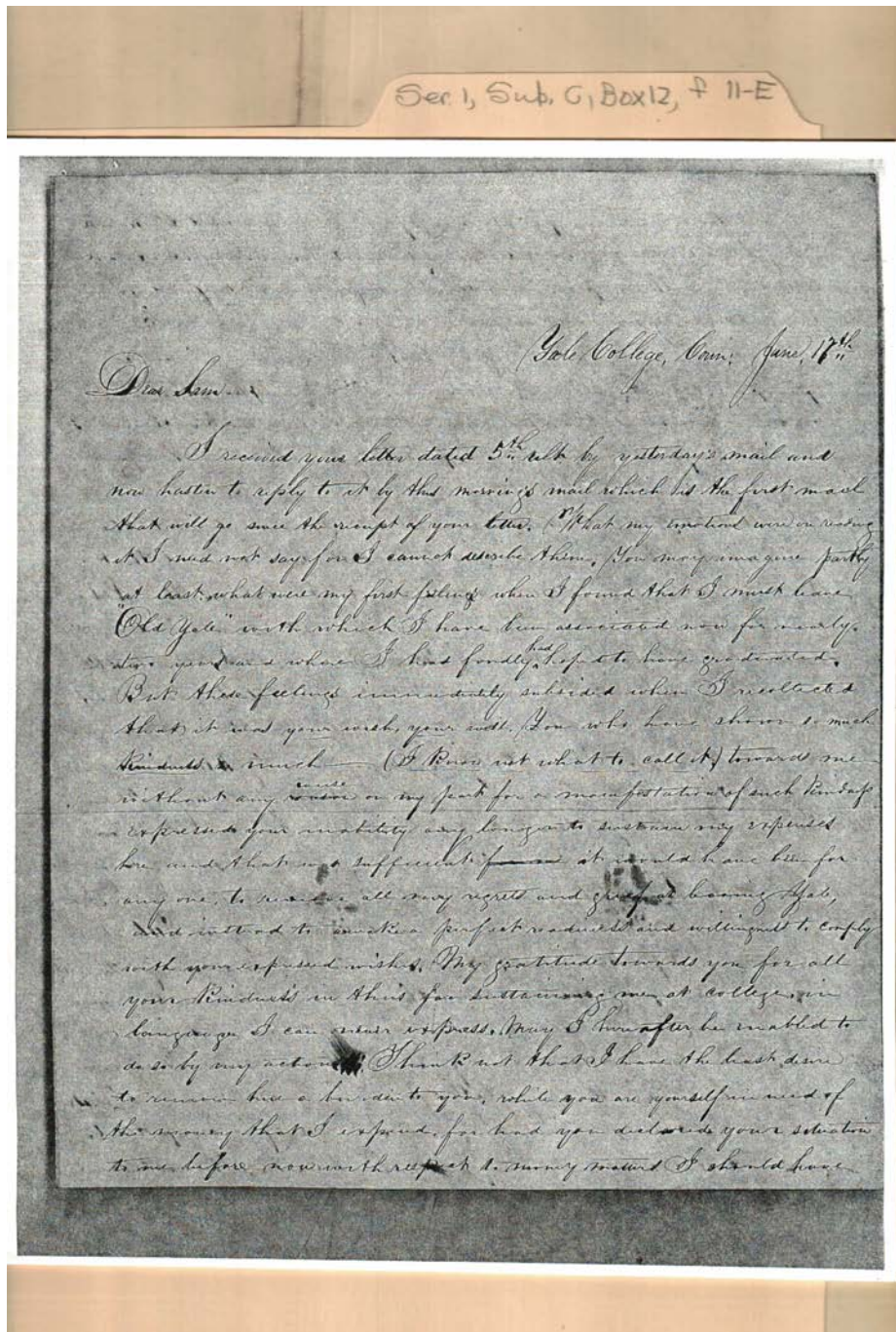
address

Dates:

June 17, 1843

Frances Cabaniss Roberts Collection: Series 1, Subseries C, Box 12, Folder 11 - Item E
Shepherd, John W. to Shepherd, Mrs. Catharine, 1843

Image 21 r01c12-11-e-0018 [Contents](#) [Index](#) [About](#)



Samuel J. Jones from J. W. Shepherd

Names:

Jones, Sam

Places:

Yale College, New
Haven, CT

Types:

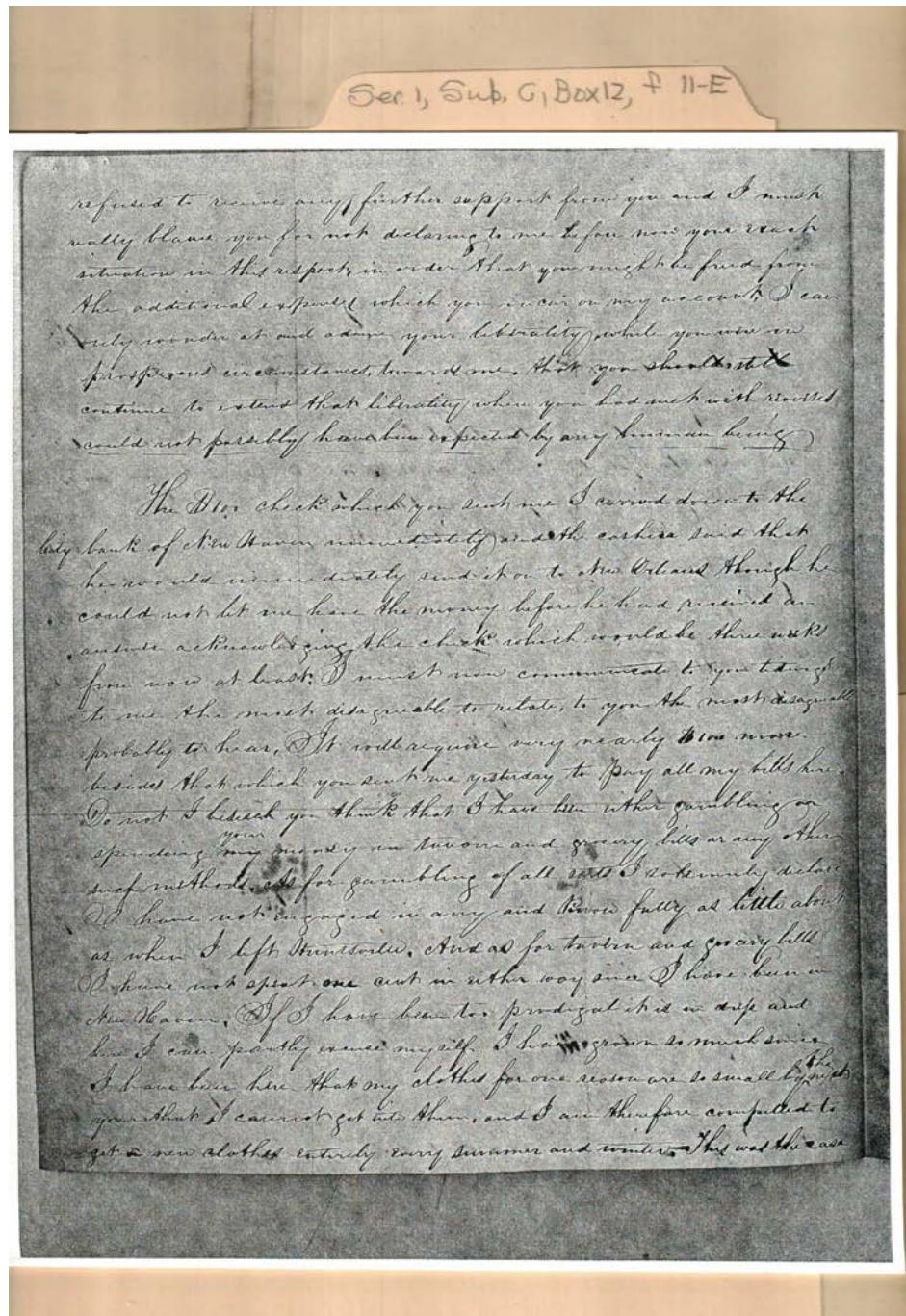
letter

Dates:

June 17, 1843

Frances Cabaniss Roberts Collection: Series 1, Subseries C, Box 12, Folder 11 - Item E
Shepherd, John W. to Shepherd, Mrs. Catharine, 1843

Image 22 r01c12-11-e-0019 [Contents](#) [Index](#) [About](#)



Samuel J. Jones from J. W. Shepherd

Places:

Yale College, New
Haven, CT

Types:

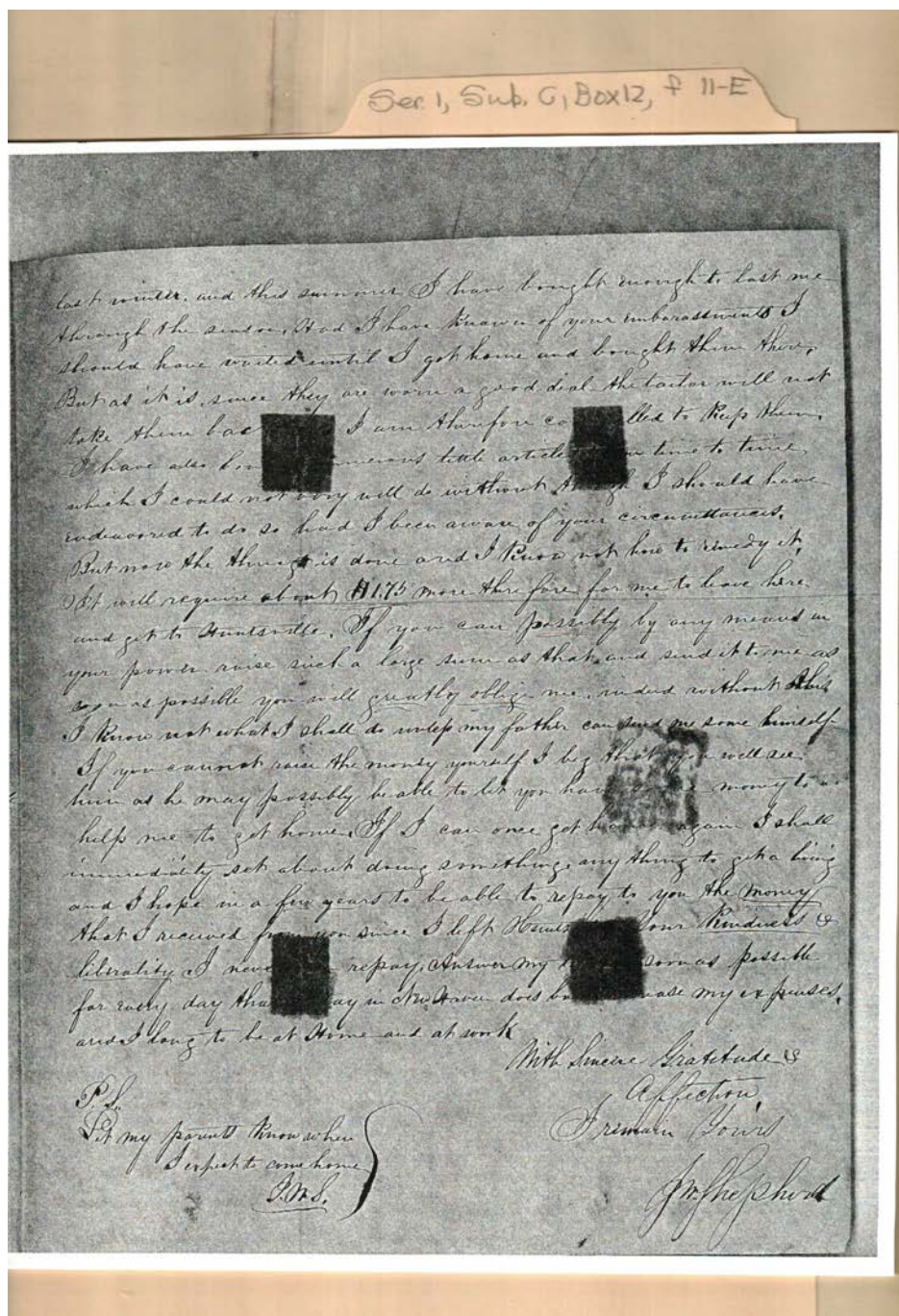
letter

Dates:

June 17, 1843

Frances Cabaniss Roberts Collection: Series 1, Subseries C, Box 12, Folder 11 - Item E
Shepherd, John W. to Shepherd, Mrs. Catharine, 1843

Image 23 r01c12-11-e-0020 [Contents](#) [Index](#) [About](#)



Samuel J. Jones from J. W. Shepherd

Names:

Shepherd, J. W.

Places:

Yale College, New
Haven, CT

Types:

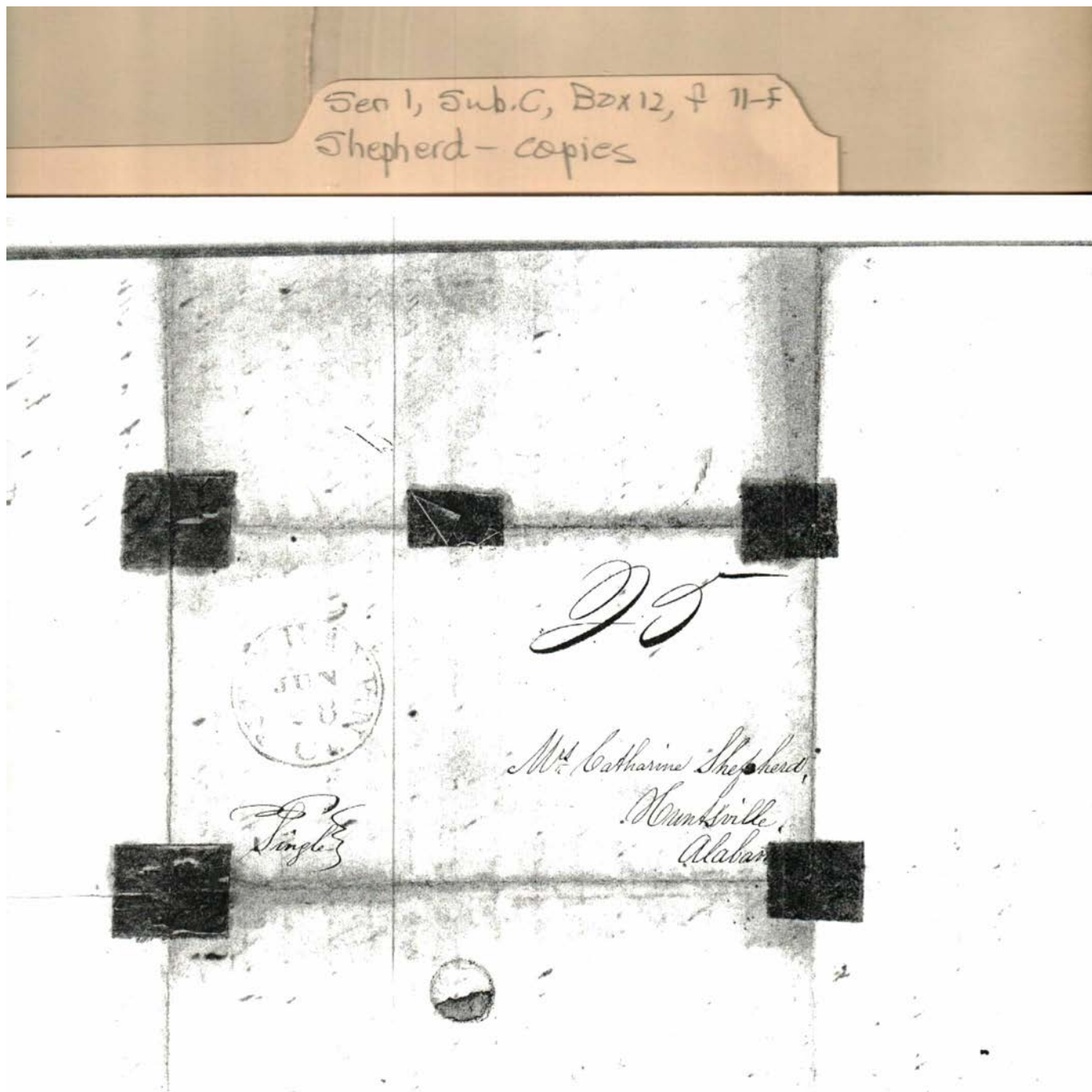
letter

Dates:

June 17, 1843

Frances Cabaniss Roberts Collection: Series 1, Subseries C, Box 12, Folder 11 - Item F
Shepherd, John W. to Shepherd, Mrs. Catharine, 1843

Image 24 r01c12-11-f-0021 [Contents](#) [Index](#) [About](#)



Catharine Shepherd from J. W. Shepherd

Names:

Shepherd, Catharine

Places:

Huntsville, AL

Types:

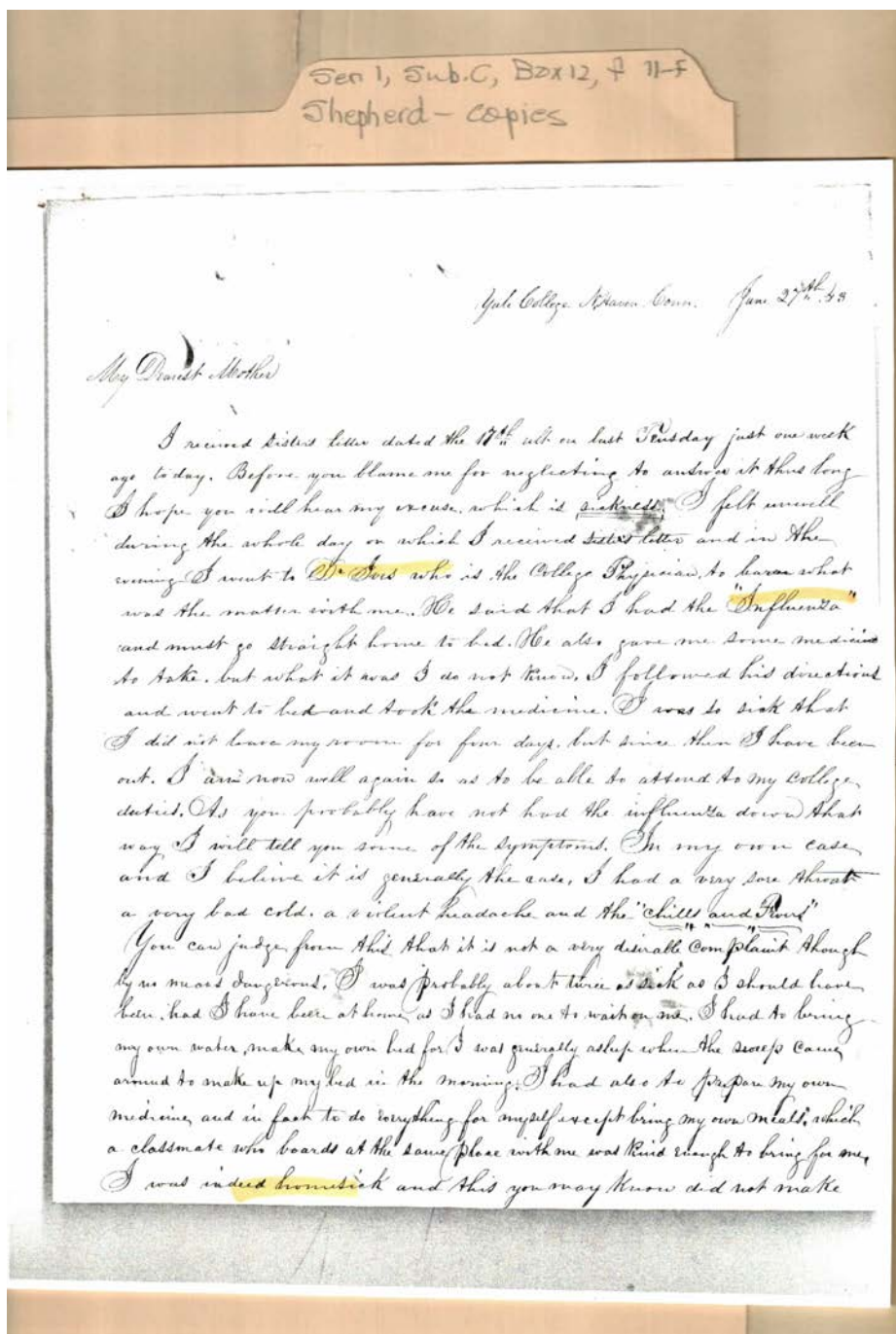
address

Dates:

June 28, 1843

Frances Cabaniss Roberts Collection: Series 1, Subseries C, Box 12, Folder 11 - Item F
Shepherd, John W. to Shepherd, Mrs. Catharine, 1843

Image 25 r01c12-11-f-0022 [Contents](#) [Index](#) [About](#)



Catharine Shepherd from J. W. Shepherd

Names:

Ives, Dr.

Shepherd, Catharine
(mother)

Places:

Yale College, New
Haven, CT

Types:

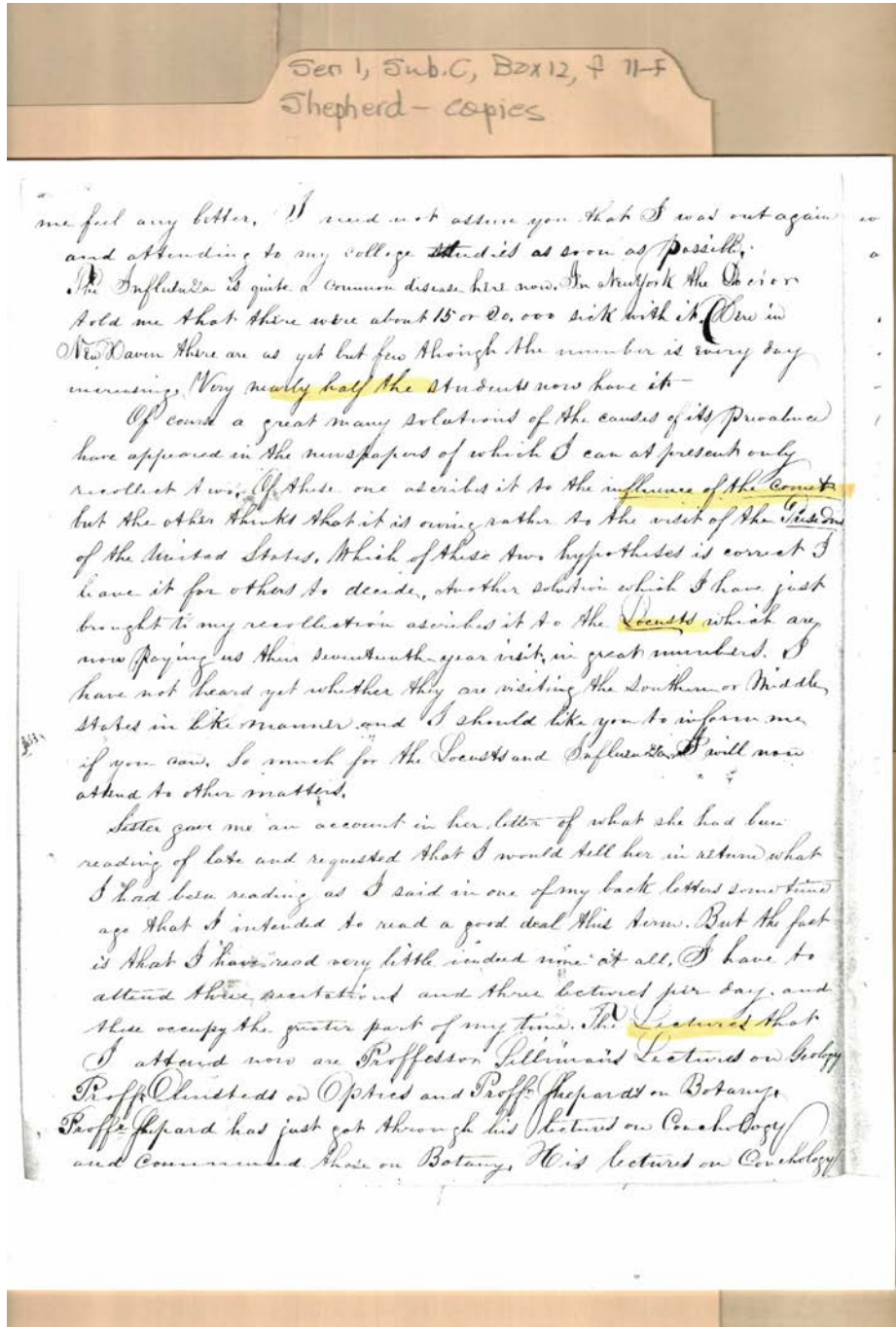
letter

Dates:

June 27, 1843

Frances Cabaniss Roberts Collection: Series 1, Subseries C, Box 12, Folder 11 - Item F
Shepherd, John W. to Shepherd, Mrs. Catharine, 1843

Image 26 r01c12-11-f-0023 [Contents](#) [Index](#) [About](#)



Catharine Shepherd from J. W. Shepherd

Names:

Olmsted, Prof.

Shepard, Prof.

Silliman, Prof.

Places:

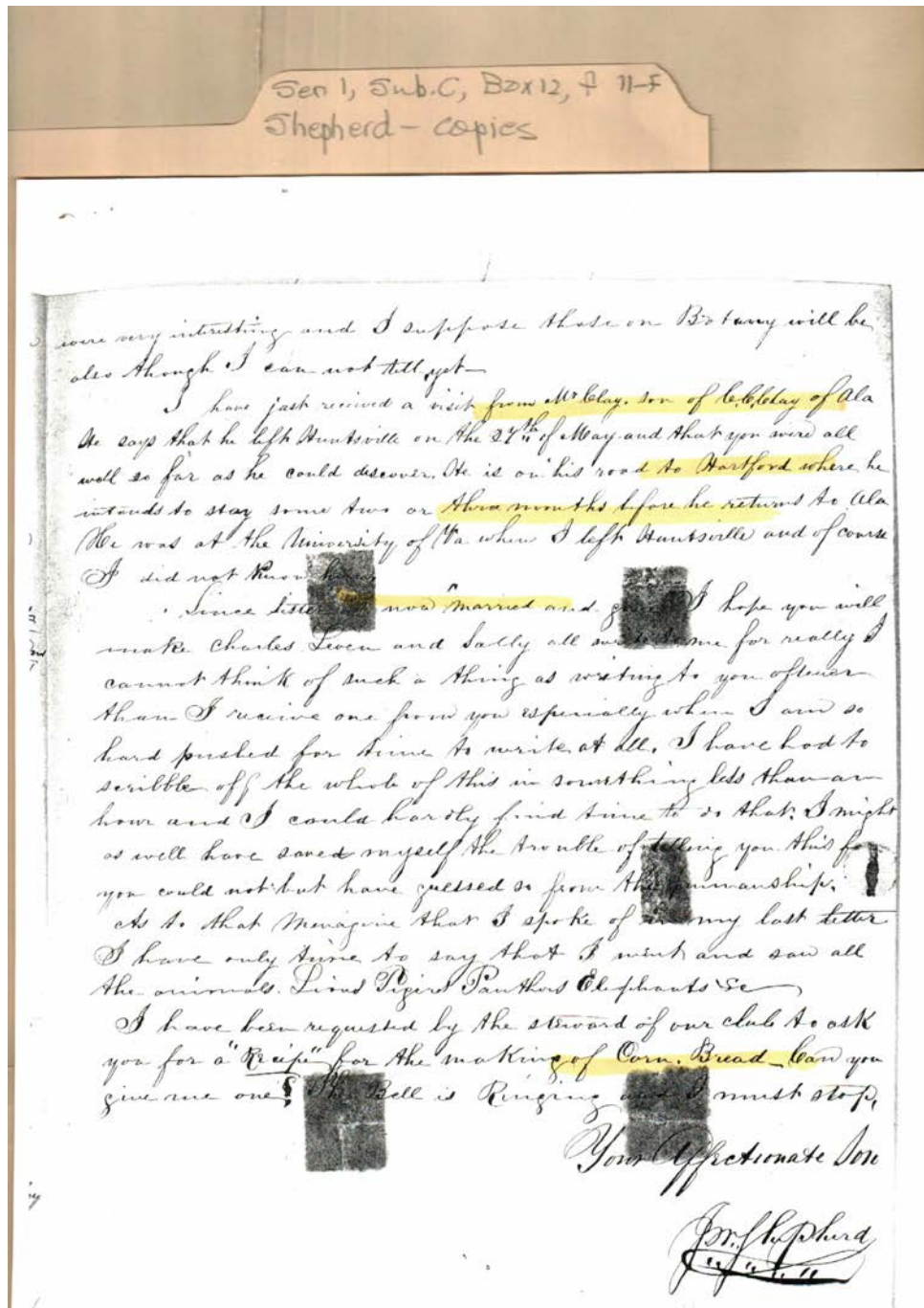
Yale College, New
Haven, CT

Types:

letter

Dates:

June 27, 1843



Catharine Shepherd from J. W. Shepherd

Names:

, Anne
 Clay,

Clay, C. C.
 Shepherd, Charles

Shepherd, J. W.
 Shepherd, Leven

Shepherd, Sally

Places:

Yale College, New
 Haven, CT

Types:

letter

Dates:

June 27, 1843

Table of Contents

Image 1 (Item A) (r01c12-11-a-0001)	0008)	Image 16 (Item D) (r01c12-11-d-0015)	0020)
Image 2 (Item A) (r01c12-11-a-0002)	Image 9 (Item C) (r01c12-11-c-0009)	Image 17 (Item D) (r01c12-11-d-0015a)	Image 24 (Item F) (r01c12-11-f-0021)
Image 3 (Item A) (r01c12-11-a-0003)	Image 10 (Item C) (r01c12-11-c-0010)	Image 18 (Item D) (r01c12-11-d-0016)	Image 25 (Item F) (r01c12-11-f-0022)
Image 4 (Item A) (r01c12-11-a-0004)	Image 11 (Item C) (r01c12-11-c-0011)	Image 19 (Item D) (r01c12-11-d-0016a)	Image 26 (Item F) (r01c12-11-f-0023)
Image 5 (Item B) (r01c12-11-b-0005)	Image 12 (Item C) (r01c12-11-c-0012)	Image 20 (Item E) (r01c12-11-e-0017)	Image 27 (Item F) (r01c12-11-f-0024)
Image 6 (Item B) (r01c12-11-b-0006)	Image 13 (Item D) (r01c12-11-d-0013)	Image 21 (Item E) (r01c12-11-e-0018)	Table of Contents
Image 7 (Item B) (r01c12-11-b-0007)	Image 14 (Item D) (r01c12-11-d-0014)	Image 22 (Item E) (r01c12-11-e-0019)	Name & Place Index
Image 8 (Item B) (r01c12-11-b-	Image 15 (Item D) (r01c12-11-d-0014a)	Image 23 (Item E) (r01c12-11-e-	About the Collection

Frances Cabaniss Roberts Collection: Series 1, Subseries C, Box 12, Folder 11

Shepherd, John W. to Shepherd, Mrs. Catharine, 1843

[Contents](#) [Index](#) [About](#)

Name & Place Index

, Anne [27](#)
Clay, C. C. [27](#)
Clay, [27](#)
Expenses at Yale [7](#)
Fackler, C. M. [3](#)
Fackler, Calvin [4](#)
Horton, Walter [4](#)
Huntsville, AL [1](#), [5](#), [12](#), [13](#), [24](#)
Ives, Dr. [25](#)
Jones, Samuel J. [20](#)
Jones, Sam [21](#)
Junior Exhibition at Yale [2](#), [3](#)
Martin, W. S. [8](#)
Olmsted, Prof. [11](#), [26](#)
Shepard, Prof. [26](#)
Shepherd, Catharine (mother) [14](#), [15](#), [25](#)
Shepherd, Catharine [13](#), [24](#)
Shepherd, Charles [11](#), [27](#)

Shepherd, J. W. [23](#), [27](#)
Shepherd, John [4](#), [8](#), [12](#)
Shepherd, L. W. [13](#)
Shepherd, Leven [27](#)
Shepherd, Sally [27](#)
Shepherd, V. A., Miss [1](#), [5](#), [12](#)
Shepherd, Virginia A. (sister) [2](#), [6](#), [9](#)
Shepherd, Virginia [18](#), [19](#)
Shoal Ford, Limestone Co., AL [20](#)
Silliman, Prof. [10](#), [26](#)
Steele, John F. [3](#)
Steele, John [4](#)
Taylor, Dr. [10](#)
Webster, Noah [10](#)
Woolsey, Prof. [11](#)
Yale College, New Haven, CT [2](#), [3](#), [4](#), [6](#), [7](#), [8](#), [9](#), [10](#), [11](#),
[12](#), [21](#), [22](#), [23](#), [25](#), [26](#), [27](#)

Frances Cabaniss Roberts Collection

Preferred Citation: Frances Cabaniss Roberts Collection, Archives and Special Collections, M. Louis Salmon Library, University of Alabama in Huntsville, Huntsville, AL.

Collection Scope and Content: The Collection of 114 Linear ft. includes a total of 156 Archival Boxes. The Frances Cabaniss Roberts collection covers the historical records of the Cabaniss Roberts family. This collection contains extensive correspondence records of the Cabaniss Roberts family circa 1830 to 1930.

Archives/Special Collections Access Restrictions: None

Conditions Governing Use: This material may be protected under U. S. Copyright Law (Title 17, U.S. Code) which governs the making of photocopies or reproductions of copyrighted materials. You may use the digitized material for private study, scholarship, or research. Though the University of Alabama in Huntsville Archives and Special Collections has physical ownership of the material in its collections, in some cases we may not own the copyright to the material. It is the patron's obligation to determine and satisfy copyright restrictions when publishing or otherwise distributing materials found in our collections.

Provenance: Gift of Johanna Shields on October 28, 2006.



**The UAH Archives and Special Collections
M. Louis Salmon Library**